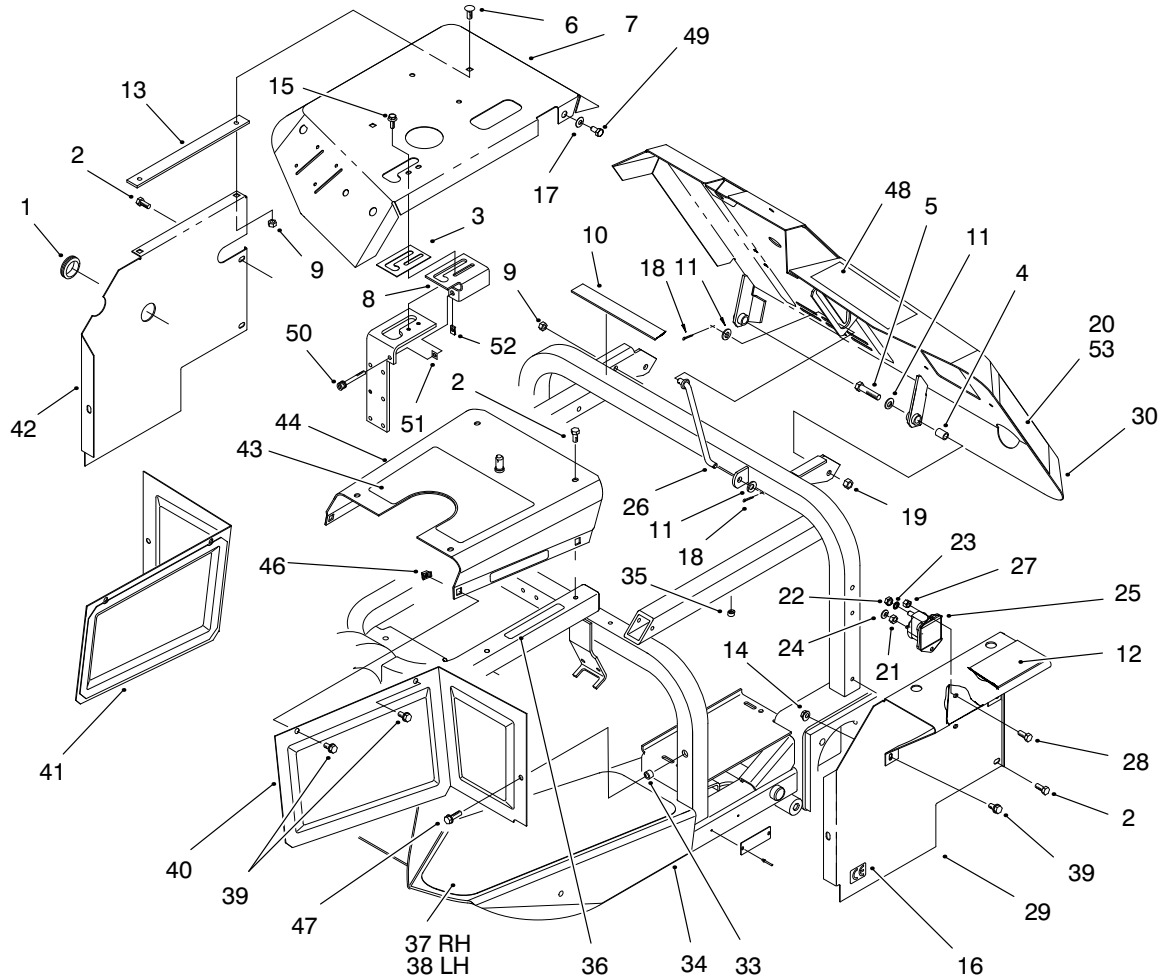




MODEL NO. 08886-90001 & UP	PARTS CATALOG
SAND PRO® 5020	

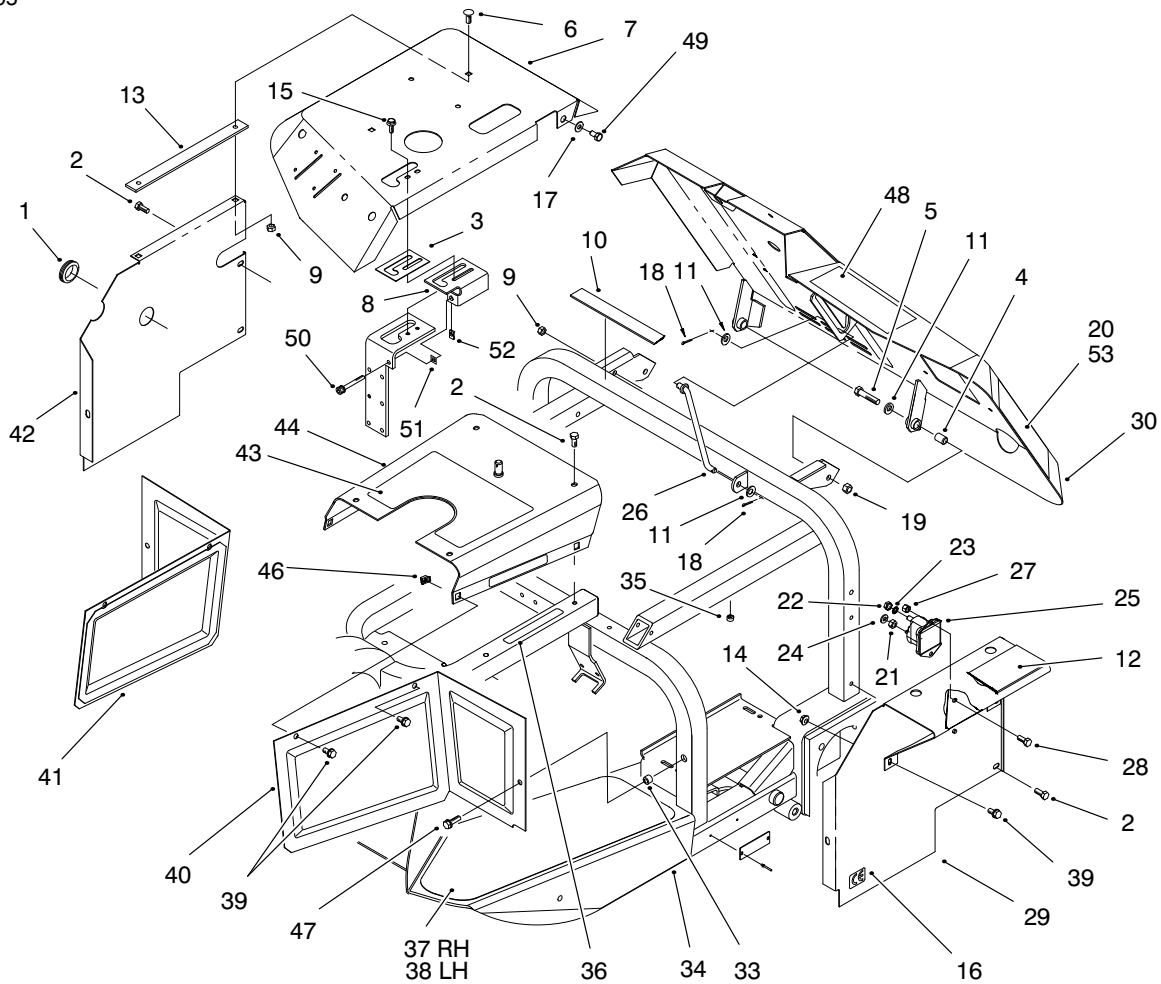


T-2786-4

FRAME & BODY ASM

Ref. No.	Part No.	Description	No. Used
1	240-3	Grommet-Rubber	1
2	32144-11	Screw-HWHTF	8
3	99-1629	Guide-Lever	1
4	85-0290	Spacer-Seat Support	2
5	323-9	Screw-HH	2
6	3230-20	Bolt-CARR	2
7	98-0918	Fender-RH	1
8	98-8160	Latch-Valve Lever	1
9	3296-29	Nut-Lock	3
10	98-0980	Strip-Seat Base	1
11	3256-24	Washer-Flat	4
12	98-0981	Pad-Seat Base	1
13	98-0982	Strip-Fender	1
14	32128-20	Nut-Flange Lock	1
15	3234-4	Screw-HFH.	2
16	93-7252	Decal-CE	1

Ref. No.	Part No.	Description	No. Used
17	3256-2	Washer-Flat	1
18	3272-4	Pin-Cotter	2
19	3296-39	Nut-Lock	2
20	98-0972	Decal-Sand Pro 5020	2
21	3219-14	Nut-Hex	2
22	3218-13	Nut-Jam	2
23	3254-2	Washer-Lock	2
24	3254-1	Washer-Lock	2
25	28-4210	Solenoid-Starter	1
26	98-0917	Rod-Seat	1
27	3296-42	Nut-Lock	2
28	321-3	Screw-HH	2
29	98-0966	Asm-Panel-Rear LH	1
30	98-8150	Seat Base (Incl. Ref. #48)	1
33	32148-8	Nut-Clinch	2



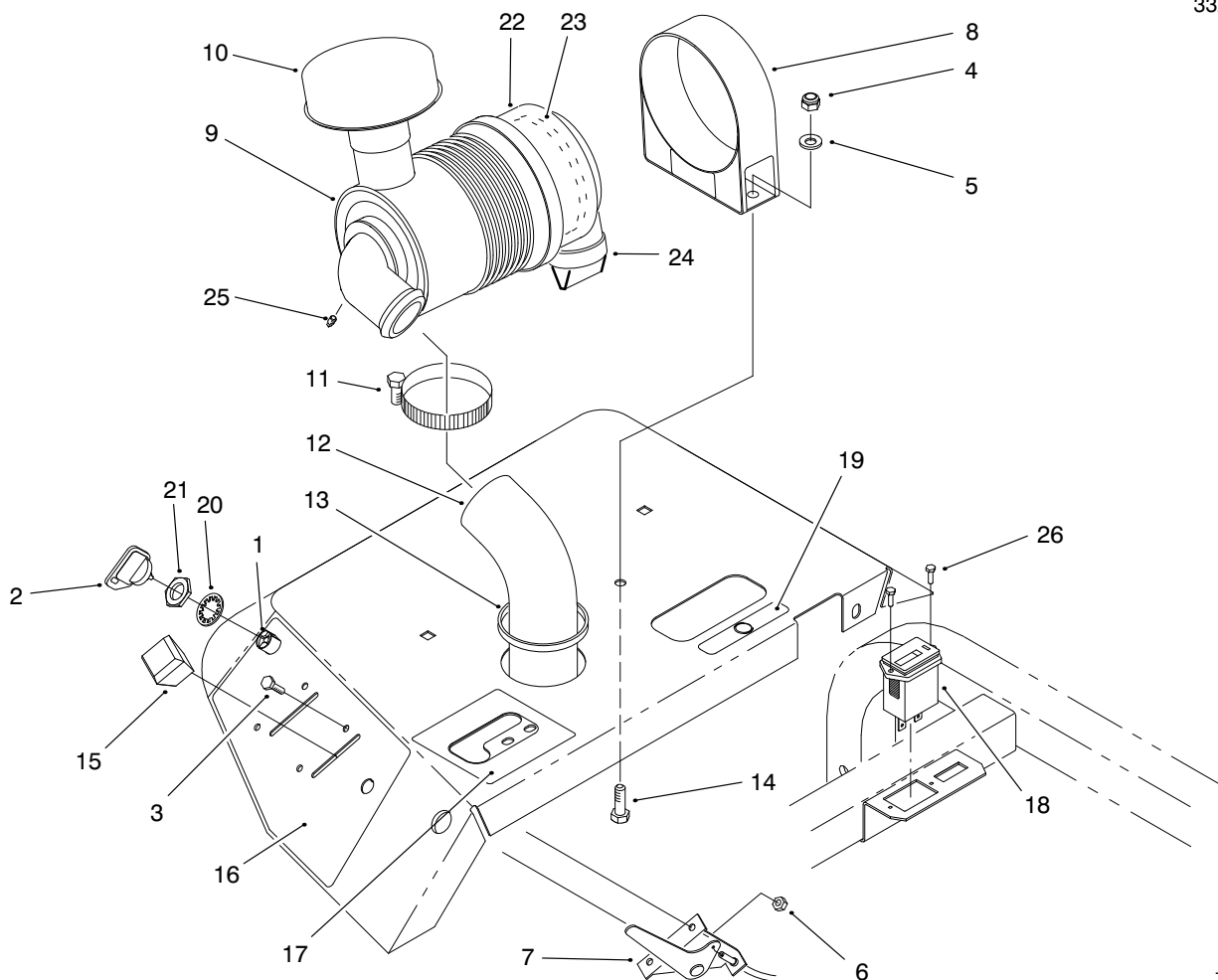
T-2786-4

FRAME & BODY ASM (Continued)

Ref. No.	Part No.	Description	No. Used
34	98-0962	Asm-Frame (Incl. Ref. #33, 35 & 36)	1
35	32148-11	Nut-Clinch	1
36	93-9052	Decal-Danger	3
37	85-8780	Tread-Floor RH	1
38	85-8790	Tread-Floor LH	1
39	3234-7	Screw	5
40	85-9680	Panel-LH	1
41	85-8490	Panel-RH	1
42	98-0902	Panel-Rear RH	1
43	93-9050	Decal-Instruction	1

Ref. No.	Part No.	Description	No. Used
44	98-0965	Asm-Top Panel (Incl. Ref. #36, 43 & 46)	1
46	3290-496	Nut-Panel	4
47	3234-29	Screw-HFH	2
48	93-9053	Decal-Warning	1
49	322-2	Screw-HH	1
50	3274-56	Screw-HSH	1
51	32115-15	Retainer	1
52	3290-199	Speed Nut	1
53	98-8065	Decal-Infield Pro 5020	2

*Not Illustrated

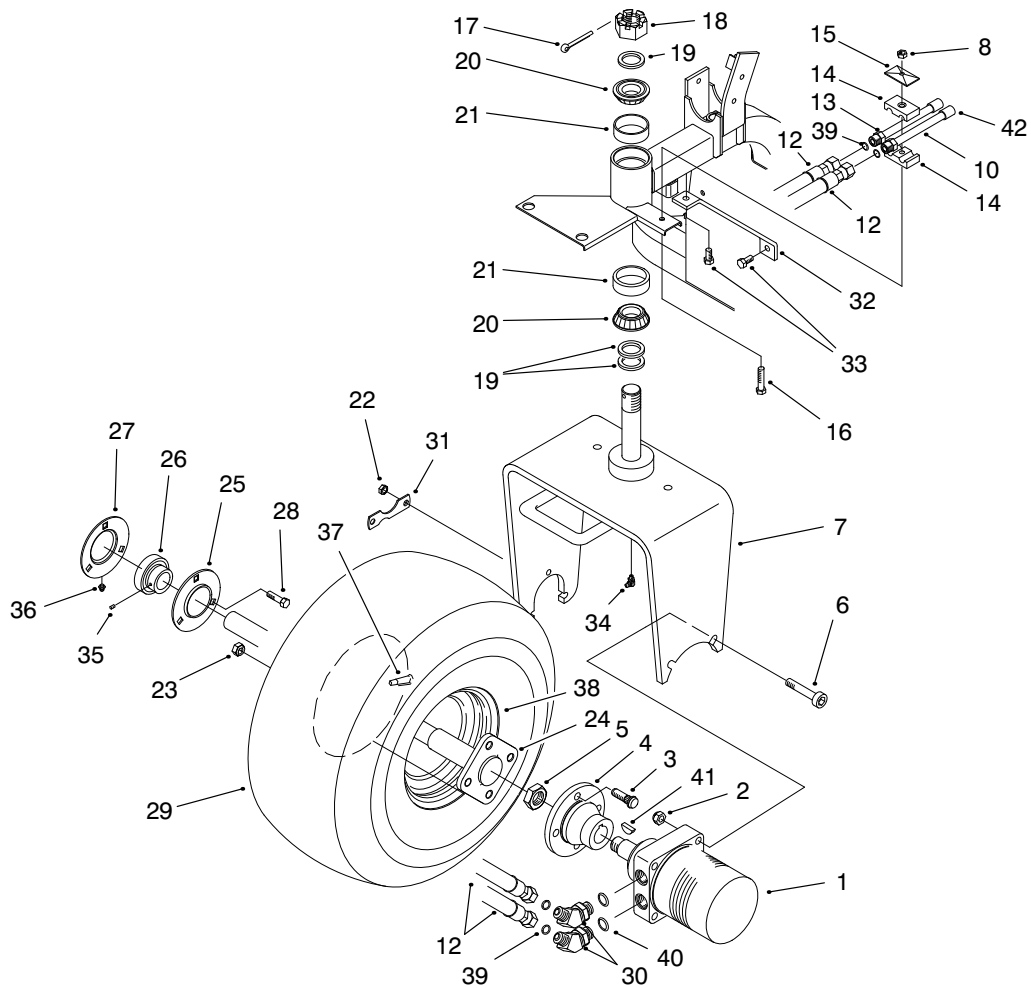


T-2787-2

AIR CLEANER & CONTROL PANEL ASM

Ref. No.	Part No.	Description	No. Used	Ref. No.	Part No.	Description	No. Used
1	83-0020	Starter Switch (Incl. Ref. #2 & 20-21)	1	13	237-164	Grommet-Rubber	1
2	63-8360	Key-Ignition	2	14	322-5	Screw-HH	2
3	32105-13	Screw-HH	4	15	66-0120	Knob	2
4	3296-29	Nut-Lock	2	16	98-0975	Decal-Controls	1
5	3256-23	Washer-Flat	2	17	98-0984	Decal-Lift	1
6	3296-2	Nut-Lock	4	18	75-6820	Hourmeter	1
7	98-0991	Control-Choke/Throttle	2	19	93-7442	Decal-Parking Lever	1
8	95-5806	Band-Mounting	1	20	3254-5	Washer-Lock	1
9	93-2190	Asm-Air Cleaner (Incl. Ref. #22-25)	1	21	218-461	Nut-Hex.	1
10	46-7510	Hood-Air Inlet	1	22	94-3652	Asm-Cover	1
11	2412-130	Clamp-Hose	2	23	93-2195	Element-Air Cleaner	1
12	92-8977	Hose-Air Cleaner	1	24	94-1414	Valve-Air Cleaner	1
				25	285-17	Plug	1
				26	32144-18	Screw-HH	2

*Not Illustrated



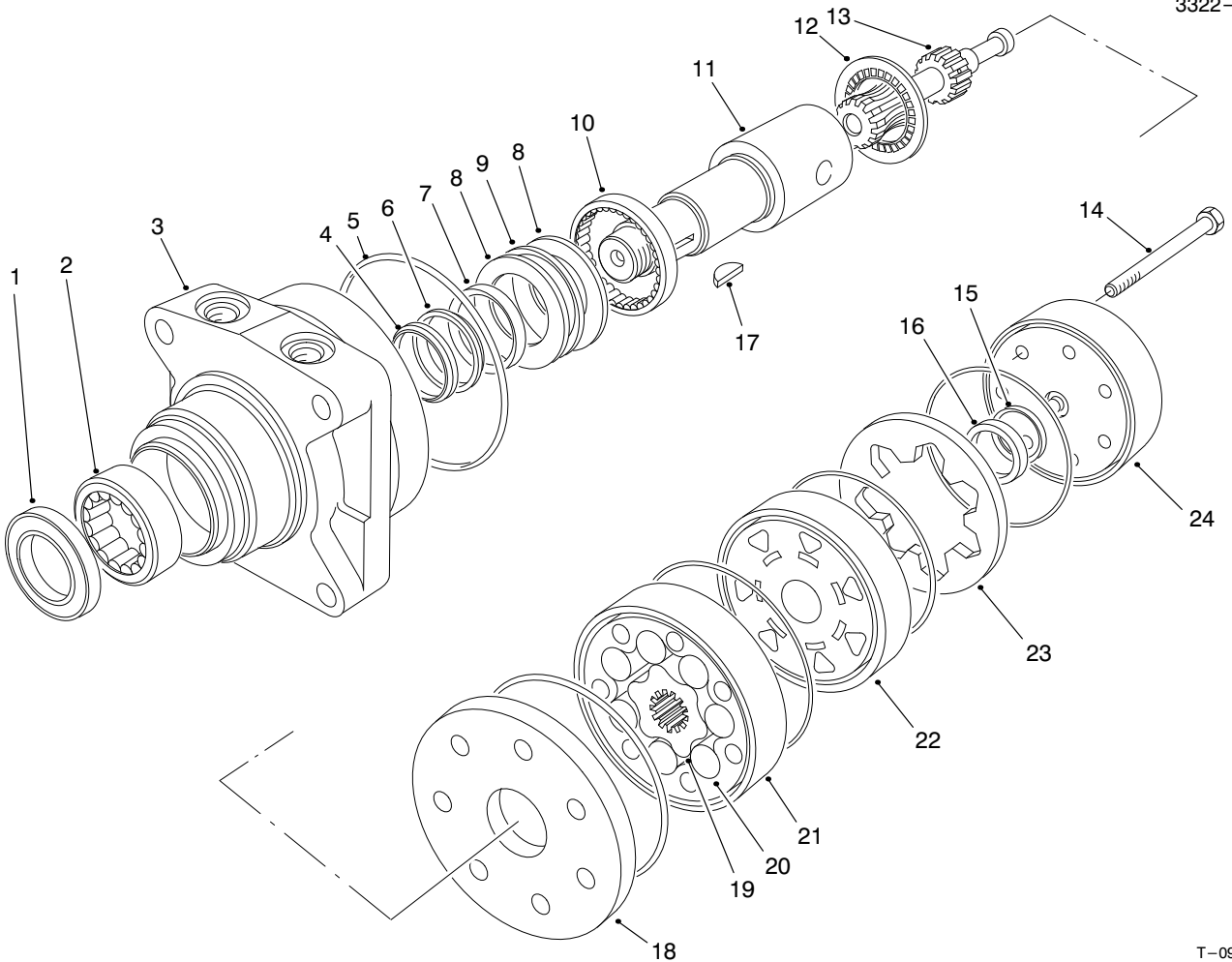
T-2788-2

FRONT WHEEL ASM

Ref. No.	Part No.	Description	No. Used
1	98-0958	Asm-Hydraulic Motor (Incl. Ref. #41)	1
2	3296-23	Nut-Lock	2
3	10-6830	Stud-Drive	4
4	93-6838	Hub-Wheel	1
5	26-3790	Nut-Lock	1
6	3274-93	Screw-HSH	2
7	98-0950	Asm-Fork	1
8	3296-8	Nut-Lock	1
10	98-0932	Asm-Hydraulic Tube (Incl. Ref. #39)	1
12	85-9640	Hose-Hydraulic	2
13	98-0933	Asm-Hydraulic Tube (Incl. Ref. #39)	1
14	56-7976	Clamp-Tube	2
15	69-9760	Plate-Cover	1
16	321-10	Screw-HH	1
17	3272-37	Pin-Cotter	1
18	32136-9	Nut-Hex.	1
19	18-6320	Washer-Steering	3
20	254-70	Bearing-Cone	2
21	254-61	Bearing-Cup	2
22	3296-39	Nut-Lock	3
23	242-50	Nut-Lug	4

Ref. No.	Part No.	Description	No. Used
24	92-8969	Spindle	1
25	85-8950	Flangette	1
26	251-352	Asm-Bearing (Incl. Ref. #35)	1
27	85-8940	Asm-Flangette (Incl. Ref. #36)	1
28	323-29	Screw-HH	3
29	85-8290	Tire	1
*	116973	Tire-Turf (Optional)	2
30	340-89	Fitting-Hydraulic 45° (Incl. Ref. #39 & 40)	2
31	88-8350	Tab-Bearing	1
32	98-0926	Strap	1
33	32104-6	Screw-HH	2
34	302-33	Fitting-Grease	1
35	302-5	Screw-Set	2
36	302-5	Fitting-Grease	1
37	232-32	Valve-Stem	1
38	94-6116	Rim	1
39	237-30	O-Ring	4
40	237-80	O-Ring	2
41		Key-Woodruff	1
42	38-3400	Snubber	2

*Not Illustrated



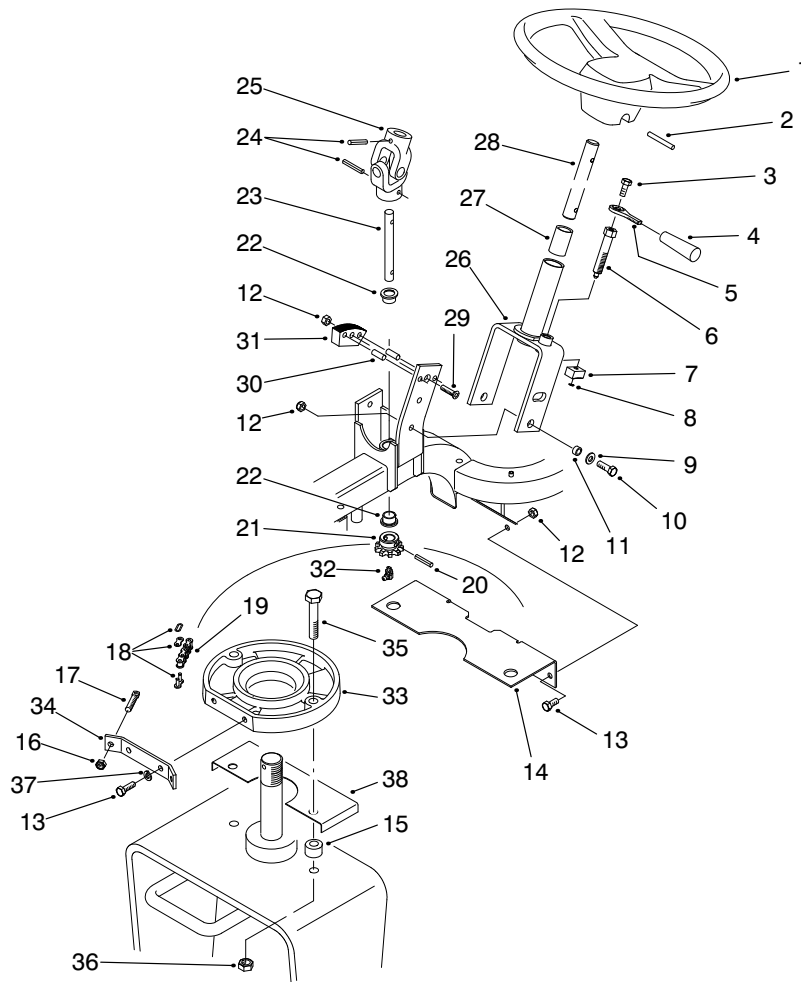
T-0983-2

FRONT HYDRAULIC DRIVE MOTOR NO. 98-0958

Ref. No.	Part No.	Description	No. Used
1		Seal-Dirt & Water	1
2		Bearing	1
3		Housing	1
4		Washer-Backup	1
5		Seal-Rings	5
6		Washer-Backup	1
7		Seal-Inner	1
8		Washer-Thrust	2
9		Bearing-Thrust	1
10		Bearing	1
11	76-0860	Shaft-Coupling	1
12	76-0850	Bearing-Thrust	1
13		Link-Drive	1
14		Screw-HH	7
15		Seal-Commutator	1
16		Commutator	1

Ref. No.	Part No.	Description	No. Used
17	3257-42	Key-Woodruff	1
18	76-0870	Plate-Wear	1
19		Rotor	1
20		Vane	7
21		Stator	1
22		Manifold	1
23		Ring-Commutator	1
24	76-0940	Asm-Cover, End	1
*		Rotor Set (Incl. Ref. #19-21)	1
*	76-0880	Asm-Commutator (Incl. Ref. #15, 16 & 23)	1
*	94-8178	Kit-Seal (Incl. Ref. #1, 4-7 & 15)	1
*	76-0810	Asm-Housing (Incl. Ref. #2, 3 & 8-10)	1

*Not Illustrated

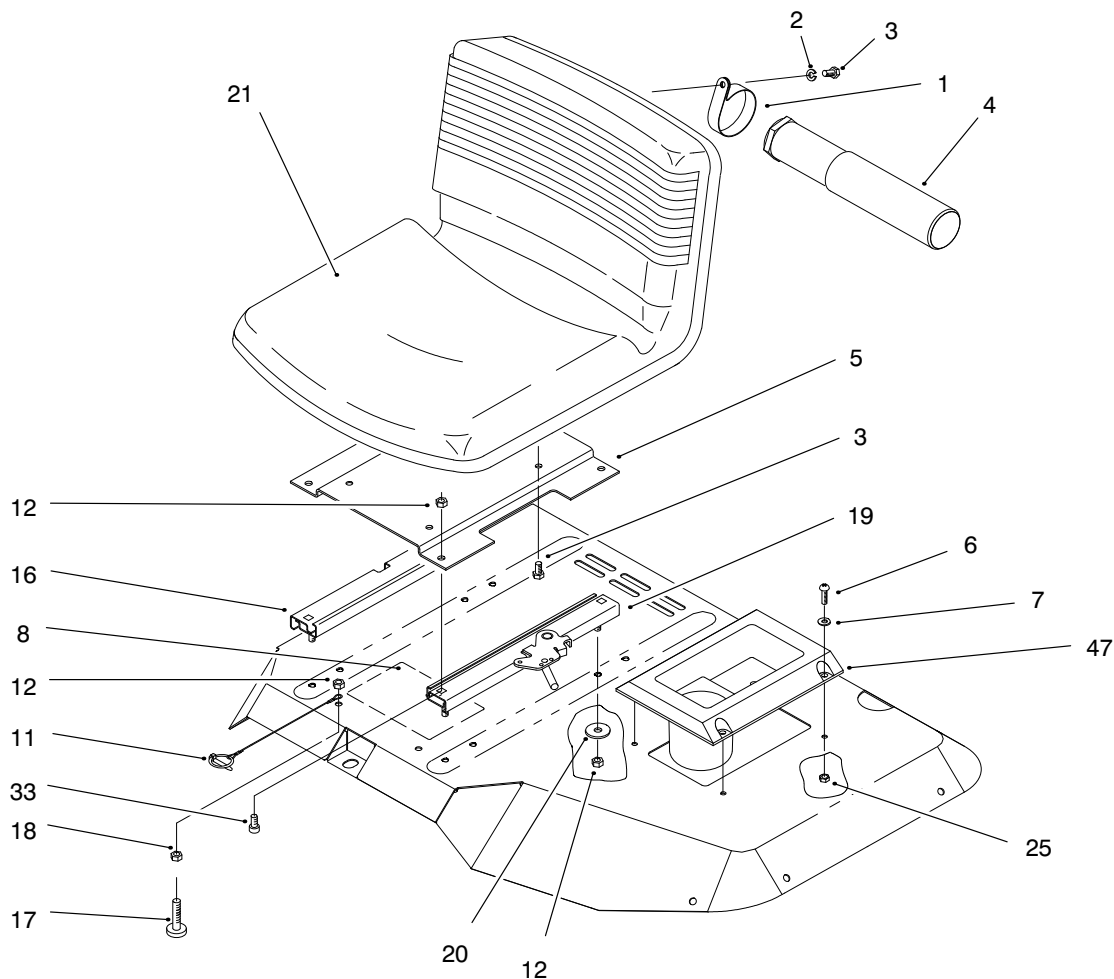


T-2789

STEERING ASM

Ref. No.	Part No.	Description	No. Used
1	76-1420	Wheel-Steering	1
2	32121-111	Pin-Roll	1
3	322-43	Screw-HH	1
4	233-39	Handle	1
5	88-8280	Lever-Steering Adjust	1
6	94-4514	Pin-Tilt Lock	1
7	88-8530	Block-Lock Upper	1
8	94-4513	Ring-Retaining	1
9	3256-23	Washer-Flat	3
10	322-5	Screw-HH	3
11	85-9120	Spacer	3
12	3296-29	Nut-Lock	6
13	322-3	Screw-HH	4
14	98-0983	Bracket-Fuel Tank	1
15	98-0978	Spacer	2
16	3296-4	Nut-Lock	2
17	18-6380	Bolt-Adjustment	2
18	2710-11	Link-Connecting	2
19	85-8030	Chain	1
20	98-0973	Pin-Grooved	1

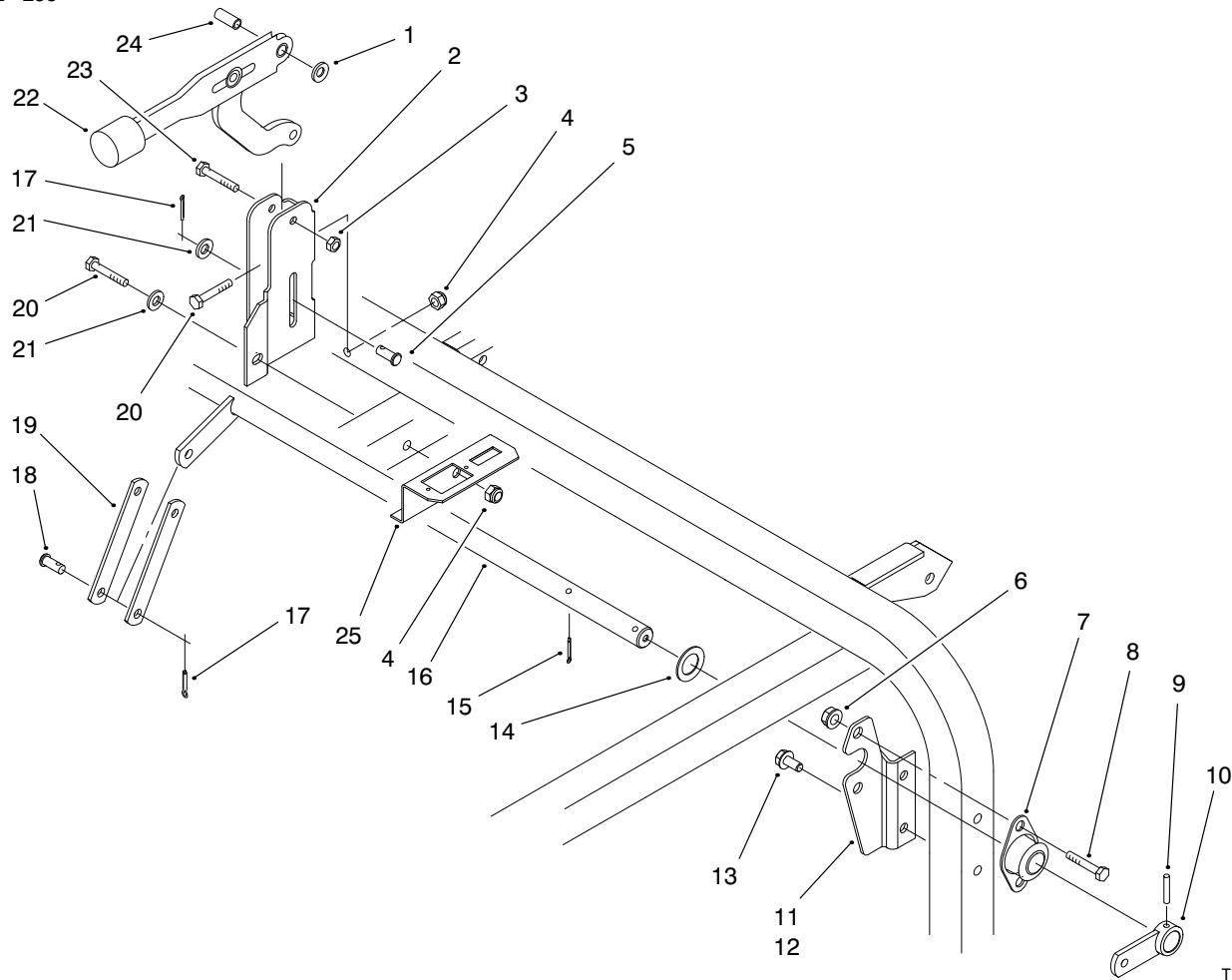
Ref. No.	Part No.	Description	No. Used
21	85-9180	Sprocket	1
22	65-8770	Bushing-Flange	2
23	98-0928	Shaft-Steering Lower	1
24	32121-15	Pin-Roll	2
25	85-9200	Joint-Universal	1
26	88-8290	Asm-Steering Column (Incl. Ref. #27)	1
27	256-185	Bushing-Sleeve	1
28	85-9220	Shaft-Steering Upper	1
29	3289-24	Screw-HSFH	1
30	88-8510	Dowel	2
31	88-8520	Block-Lock Lower	1
32	302-33	Fitting-Grease	1
33	98-0924	Guide-Chain	1
34	98-0925	Bracket-Chain	1
35	325-11	Screw-HH	2
36	3296-25	Nut-Lock	2
37	3253-4	Washer-Lock	2
38	98-0929	Plate-Chain Stay	1



T-2790-1

SEAT ASM

Ref. No.	Part No.	Description	No. Used	Ref. No.	Part No.	Description	No. Used
1	2412-133	Clamp-R	2	16	51-0780	Slider-Seat 4"	1
2	3253-4	Washer-Lock	2	17	32141-36	Level-Screw	2
3	322-2	Screw-HH	6	18	3218-2	Nut-Jam	2
4	74-0720	Tube-Manual	1	19	51-0790	Slider-Seat	1
5	85-9660	Plate-Seat Adjust	1	20	63-8410	Washer-Flat	4
6	3258-166	Screw-Round Hd.	4	21	92-8976	Seat	1
7	3256-1	Washer-Flat	4	25	3296-42	Nut-Lock	4
8	98-0977	Decal-Service	1	32	3256-23	Washer-Flat	1
11	98-0979	Pin-Lynch	1	33	3274-12	Screw-HSH	4
12	3296-29	Nut-Lock	10				



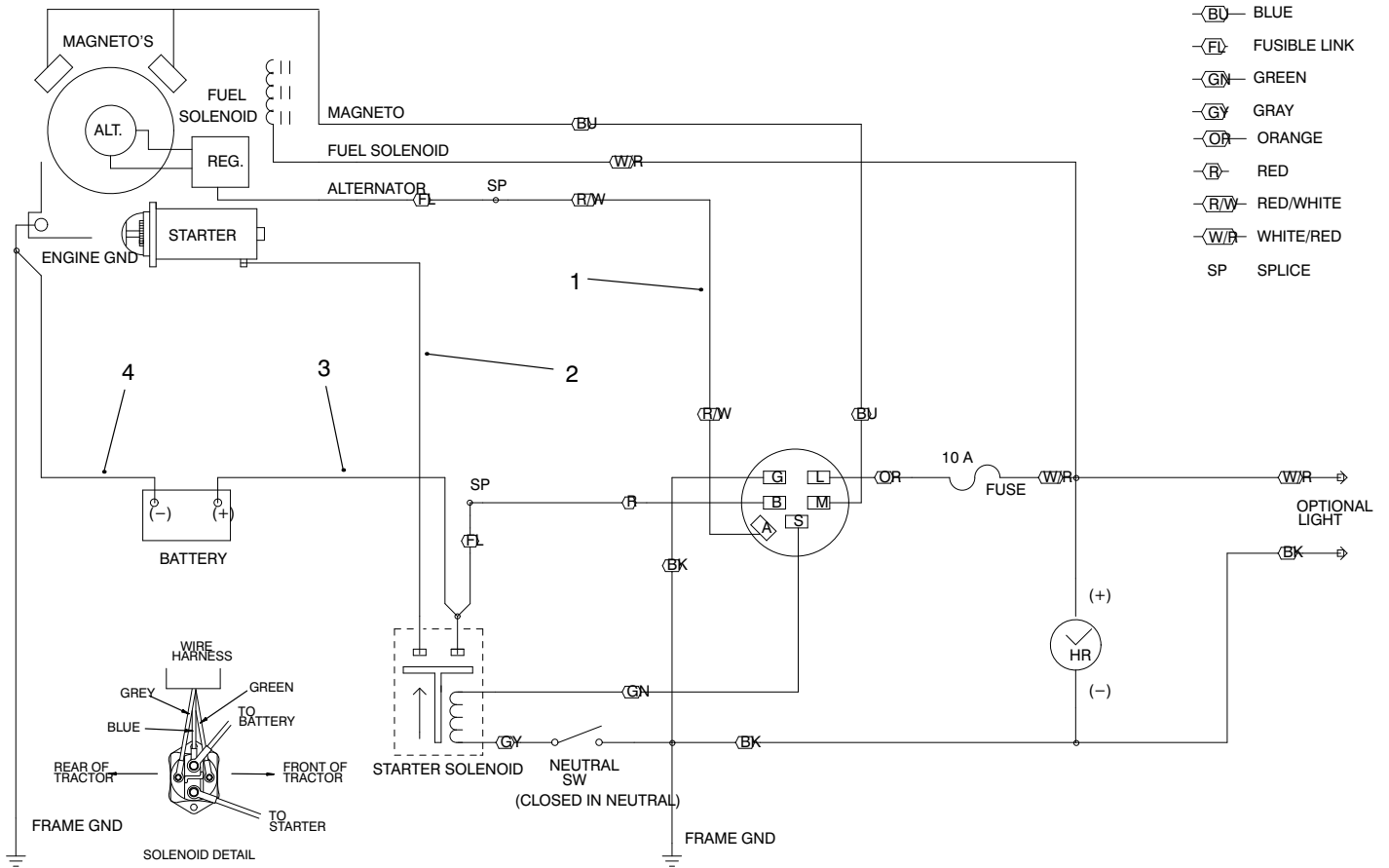
T-2750-3

PARKING BRAKE ASM

Ref. No.	Part No.	Description	No. Used
1	3290-477	Washer-Curved	1
2	95-5823	Bracket-Lever	1
3	3296-42	Nut-Lock	1
4	3296-29	Nut-Lock	2
5	238-14	Pin-Clevis	1
6	3296-39	Nut-Lock	4
7	27-2320	Bearing-Side Flange	2
8	3234-1	Screw-HFH	4
9	32121-6	Pin-Roll	2
10	83-9310	Arm-Brake	2
11	98-0900	Bracket-Bearing LH	1
12	98-0901	Bracket-Bearing RH	1
13	32144-14	Screw-HWH	4

Ref. No.	Part No.	Description	No. Used
14	67-9410	Washer-Flat	2
15	3272-12	Pin-Cotter	2
16	95-5848	Rod-Transpose	1
17	3272-10	Pin-Cotter	2
18	283-62	Pin-Clevis	1
19	95-5844	Strap	2
20	322-11	Screw-HH	2
21	3256-23	Washer-Flat	2
22	87-2710	Asm-Lever	1
23	321-9	Screw-HH	1
24	87-4710	Spacer-Parking Brake	1
25	98-0922	Bracket-Hourmeter	1

- BK BLACK
- BU BLUE
- FL FUSIBLE LINK
- GN GREEN
- GY GRAY
- OR ORANGE
- R RED
- RW RED/WHITE
- WR WHITE/RED
- SP SPLICE

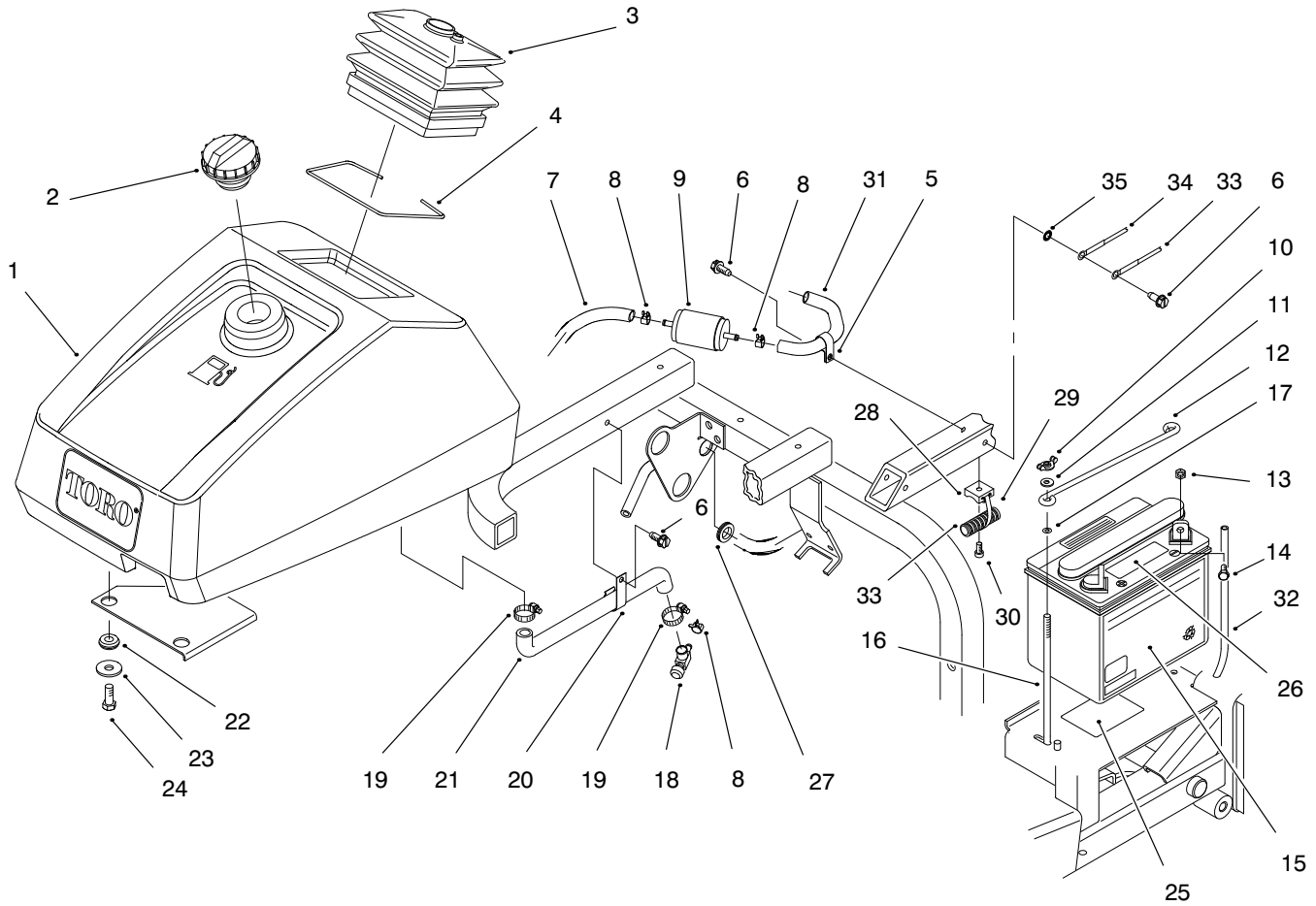


T-2791-2

ELECTRICAL SCHEMATIC

Ref. No.	Part No.	Description	No. Used
1	98-0994	Wire Harness—Main	1
2	80-2110	Cable—Solenoid—Starter	1

Ref. No.	Part No.	Description	No. Used
3	83-2420	Cable—Positive	1
4	88-8330	Cable—Engine Ground	1

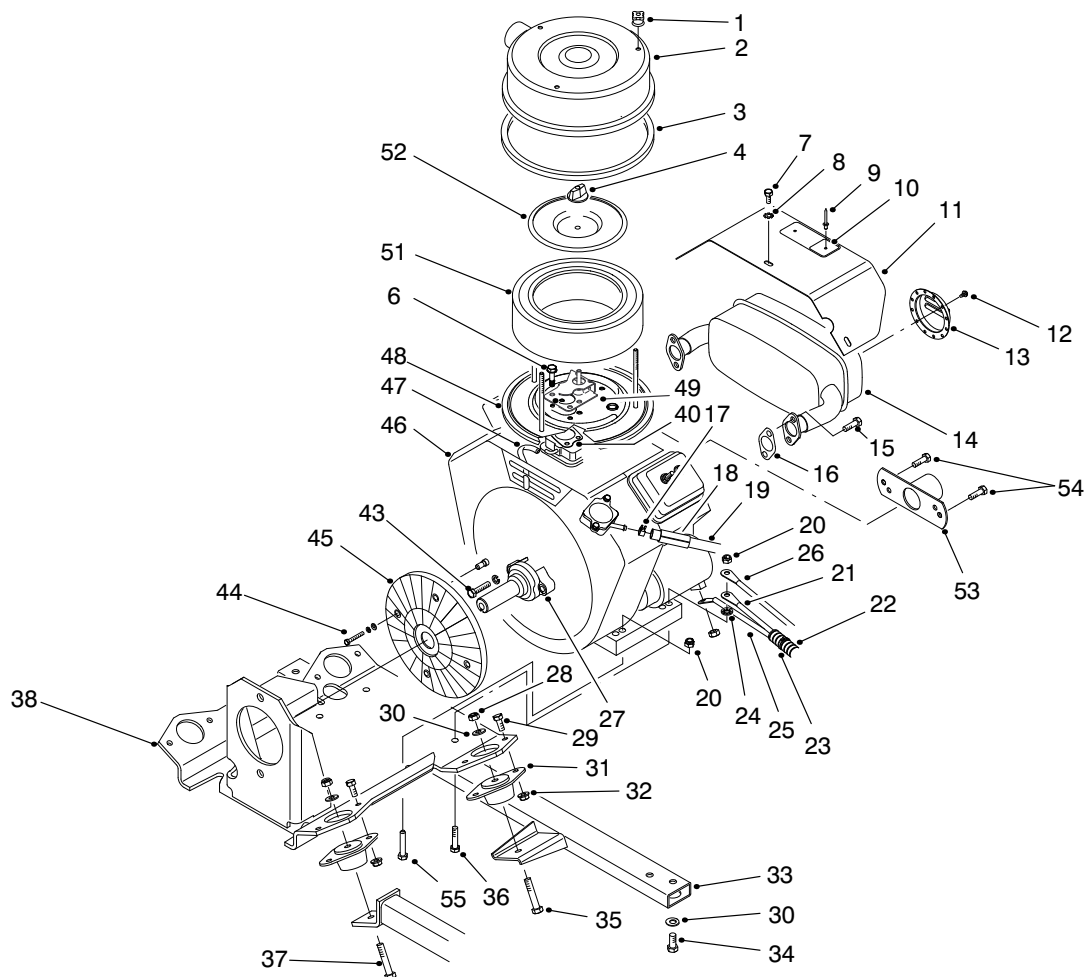


T-2792-2

FUEL TANK & BATTERY ASM

Ref. No.	Part No.	Description	No. Used
1	98-0927	Tank-Fuel	1
2	93-7170	Cap-Fuel	1
3	85-9010	Boot-Steering	1
4	85-8930	Retainer-Boot	1
5	2412-93	Clamp-R	1
6	32144-11	Screw-TAP	3
7	98-0976	Hose-Fuel	1
8	2412-98	Clamp-Hose	3
9	94-2690	Filter-Fuel	1
10	32103-12	Nut-Wing	2
11	3256-22	Washer-Flat	2
12	72-4790	Hold-Down-Battery	1
13	3217-5	Nut-Hex.	2
14	321-3	Screw-HH	2
15	92-1678	Battery (Incl. Ref. #32)	1
16	56-7720	Rod-Battery Hold-Down	2
17	237-143	Grommet	2

Ref. No.	Part No.	Description	No. Used
18	83-1390	Fitting-Fuel Shut-Off	1
19	2412-36	Clamp-Hose	2
20	2412-109	Clip-J	1
21	98-0995	Hose-Fuel	1
22	240-11	Grommet	4
23	63-8410	Washer-Flat	4
24	323-5	Screw-HH	4
25	93-6668	Decal-Battery	1
26	93-7276	Decal-Danger	1
27	237-124	Grommet	1
28	3290-509	Tie-Mount	1
29	3290-378	Tie-Cable	1
30	3274-31	Screw-HH	1
31	47-2964	Hose-Fuel	1
32		Hose-Battery Vent	1
33	98-0994	Wire Harness-Main	1
34	98-0999	Wire-Ground	1
35	3254-2	Washer-Lock	1



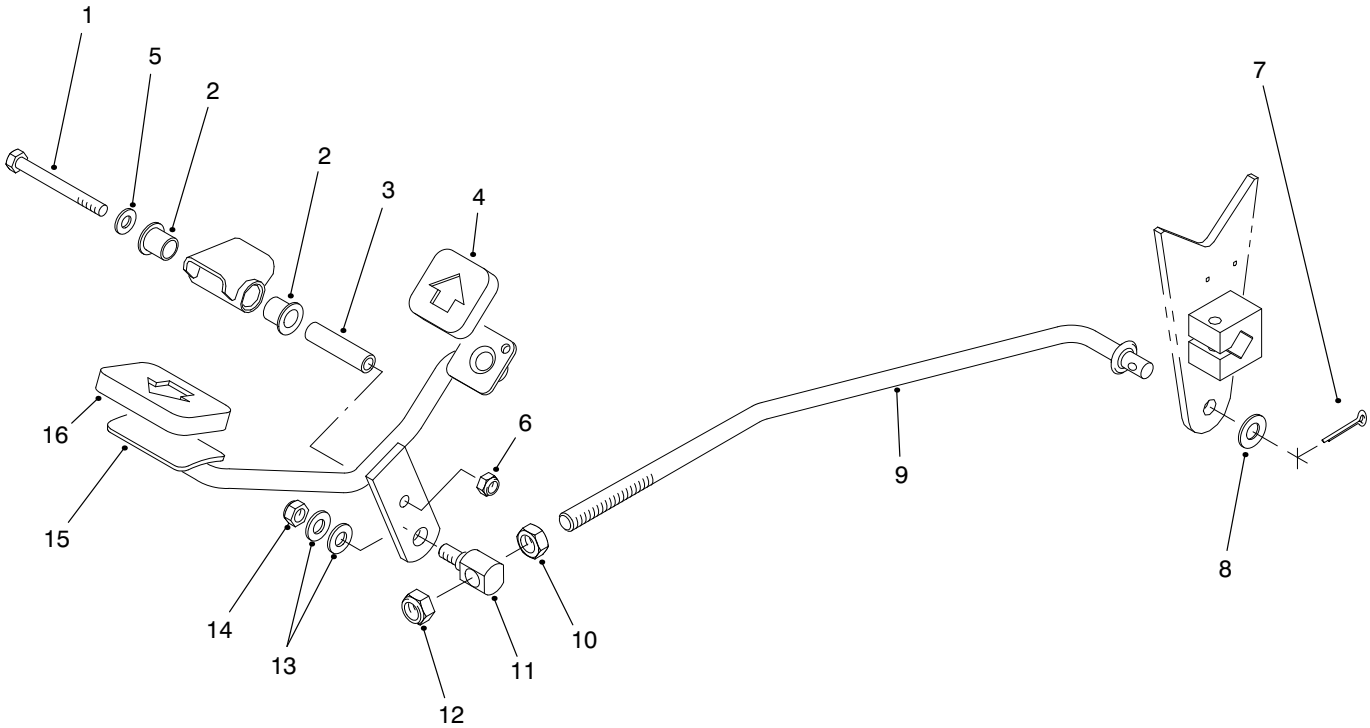
T-1474-4

ENGINE & MUFFLER ASM

Ref. No.	Part No.	Description	No. Used	Ref. No.	Part No.	Description	No. Used
†1	281051	Knob-Air Cleaner	3	28	3296-39	Nut-Lock	4
2	98-0953	Cover-Air Cleaner	1	29	322-4	Screw-HH	8
3	85-8360	Seal-Cover	1	30	3256-24	Washer-Flat	8
†4	491875	Knob-Air Cleaner	1	31	83-1031	Mount-Engine	4
†6	805317	Screw-HFH	5	32	3296-29	Nut-Lock	8
7	33113-008	Screw-HH	3	33	85-8600	Support-Engine	1
8	3255-7	Washer-ETLW	3	34	323-5	Screw-HH	4
9	3269-32	Rivet-Pop	2	35	323-10	Screw-HH	2
10	95-0645	Plate-Hot Surface	1	36	322-10	Screw-HH	2
11	95-5827	Asm-Muffler Shield (Incl. Ref. #9 & 10)	1	37	323-11	Screw-HH	2
12	83-2230	Screw	4	38	85-8640	Base-Engine	1
13	83-2220	Deflector-Exhaust	1	†40	805700	Gasket-Carburetor	1
14	98-0960	Muffler	1	†43	93847	Screw-HH	2
†15		Screw	4	†44	805447	Screw-HH	4
†16	805024	Gasket-Exhaust	2	†45	808034	Asm-Screen/Spacer	1
17	2412-98	Clamp-Hose	1	46	98-0930	Asm-Engine	1
18	38-3400	Guard-Rubber	1	47	75-4705	Hose-Fuel	1
19	47-2964	Hose-Fuel	1	48	85-8430	Base-Air Cleaner	1
20	3296-29	Nut-Lock	4	†49	808311	Shield-Carburetor Inlet	1
21	88-8330	Cable-Negative	1	†51	272490	Element-Air Cleaner	1
22	94-4519	Cover-Cable	1	†52	805631	Plate-Element	1
23	3290-378	Tie-Cable	2	53	95-0632	Cover	1
24	3254-2	Washer-ITLW	1	54	3210-2	Screw-HH	2
25	83-2420	Cable-Positive	1	*	83-2240	Arrester-Spark (Optional)	1
26	98-0999	Wire-Ground	1	55	322-8	Screw-HH	2
†27	262949	Shaft-Stub	1				

*Not Illustrated

†Contact your local Briggs & Stratton Dealer for part replacement.

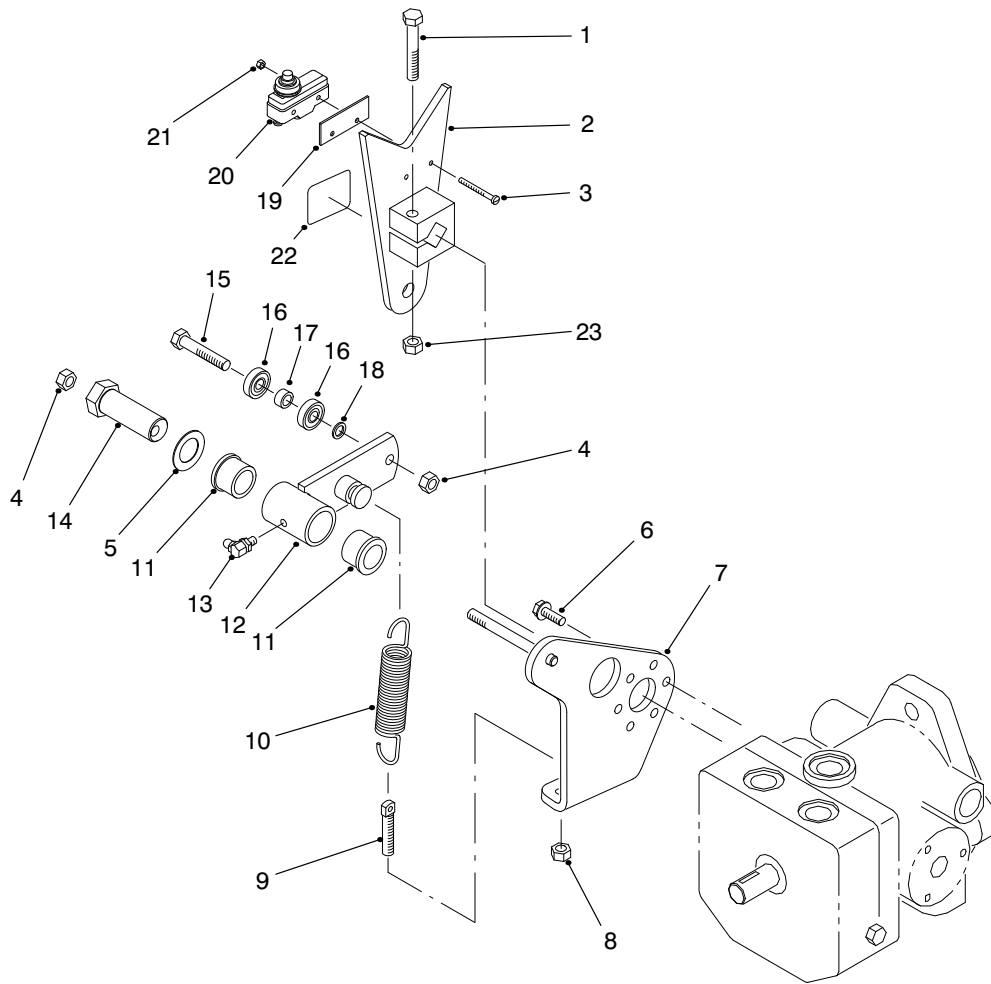


T-1476

TRACTION PEDAL ASM

Ref. No.	Part No.	Description	No. Used
1	322-14	Screw-HH	1
2	256-219	Bushing-Flange	2
3	85-8960	Spacer	1
4	74-9110	Pad-Reverse	1
5	3256-23	Washer-Flat	1
6	3296-29	Nut-Lock	1
7	3272-16	Pin-Cotter	1
8	3256-26	Washer-Flat	1

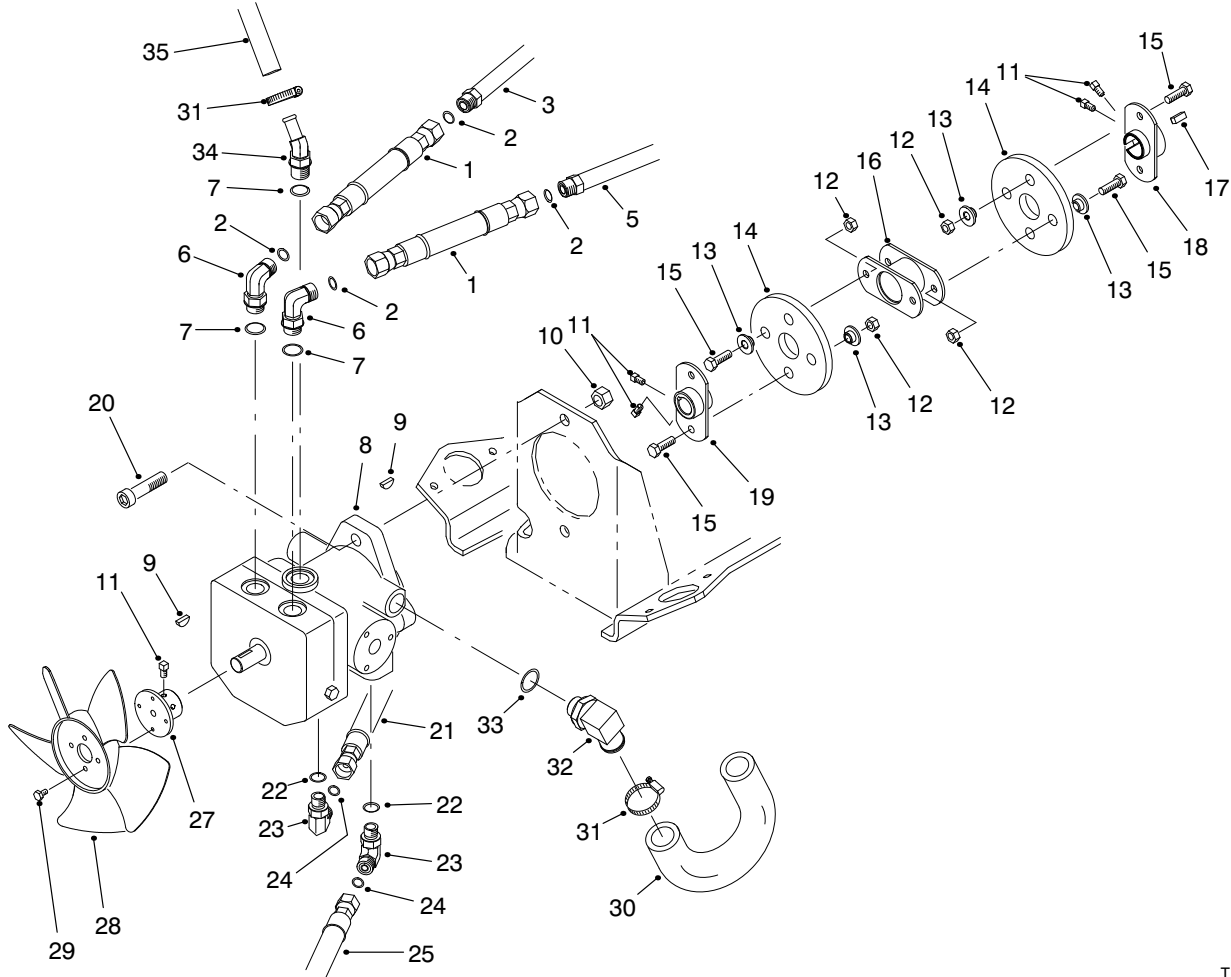
Ref. No.	Part No.	Description	No. Used
9	85-8450	Rod-Control	1
10	3218-5	Nut-Jam	1
11	92-2344	Trunnion	1
12	3296-23	Nut-Lock	1
13	3256-24	Washer-Flat	2
14	3296-39	Nut-Lock	1
15	92-2343	Asm-Pedal	1
16	74-9100	Pad-Forward	1



T-1480

PUMP CONTROL LEVER ASM

Ref. No.	Part No.	Description	No. Used	Ref. No.	Part No.	Description	No. Used
1	323-10	Screw-HH	1	13	302-60	Fitting-Grease	1
2	85-8300	Lever-Pump	1	14	76-8640	Stud-Traction	1
3	32105-21	Screw-Machine	2	15	322-8	Screw-HH	1
4	3296-29	Nut-Lock	2	16	251-307	Bearing	2
5	3-6498	Washer-Thrust	1	17	85-9120	Spacer	1
6	49-2040	Screw-HFH	3	18	75-5470	Spacer	1
7	95-0553	Plate-Pump	1	19	85-9150	Plate-Switch	1
8	3296-4	Nut-Lock	1	20	29-6163	Switch-Neutral	1
9	18-6380	Pin-Adjusting	1	21	3296-9	Nut-Lock	2
10	85-9030	Spring-Extension	1	22	93-9051	Decal-Eccentric Bolt	1
11	256-113	Bushing-Flange	2	23	3296-39	Nut-Lock	1
12	85-8460	Asm-Switch Arm (Incl. Ref. #11 & 13)	1				

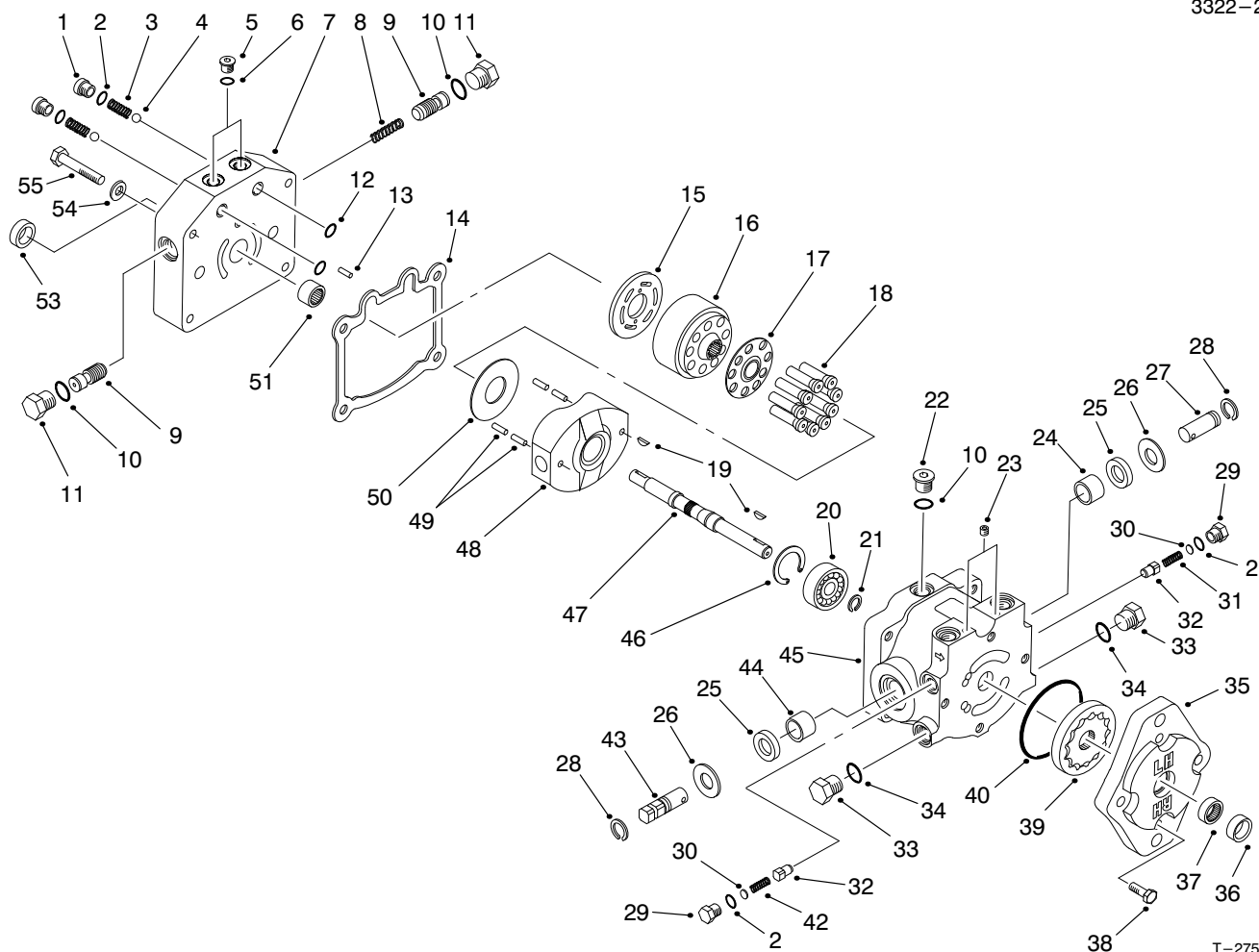


T-1475-4

HYDRAULIC PUMP INSTALLATION ASM

Ref. No.	Part No.	Description	No. Used
1	85-9610	Hose-Hydraulic	2
2	237-30	O-Ring	4
3	98-0933	Asm-Hydraulic Tube (Incl. Ref. #2)	1
5	98-0938	Asm-Hydraulic Tube (Incl. Ref. #2)	1
6	340-98	Fitting-Hydraulic 90° (Incl. Ref. #2 & 7)	2
7	237-79	O-Ring	3
8	95-5842	Asm-Hydraulic Pump (Incl. Ref. #9)	1
9	3257-32	Key-Woodruff	2
10	3296-23	Nut-Lock	2
11	3241-5	Screw-Set, Sq. Hd.	6
12	3296-29	Nut-Hex.	8
13	27-6600	Spacer-Coupler	8
14	80-8650	Coupler-Rubber	2
15	322-4	Screw-HH	8
16	85-8770	Coupling	1
17	85-9020	Key-Square	1

Ref. No.	Part No.	Description	No. Used
18	85-8730	Hub-Engine	1
19	85-8700	Hub-Pump	1
20	3274-5	Screw-HSH	2
21	98-0989	Hose-Hydraulic	1
22	237-42	O-Ring	2
23	340-77	Fitting-Hydraulic 90° (Incl. Ref. #22 & 24)	2
24	237-22	O-Ring	2
25	85-9590	Hose-Hydraulic	1
27	85-8670	Hub-Fan	1
28	85-9560	Fan	1
29	32144-73	Screw-HH	4
30	98-0969	Hose-Hydraulic	1
31	2412-129	Clamp-Hose	2
32	95-0629	Fitting-Hydraulic 90° (Incl. Ref. #33)	1
33	237-80	O-Ring	1
34	354-126	Fitting-Hydraulic 45° (Incl. Ref. #7)	1
35	85-9450	Hose-Hydraulic	1

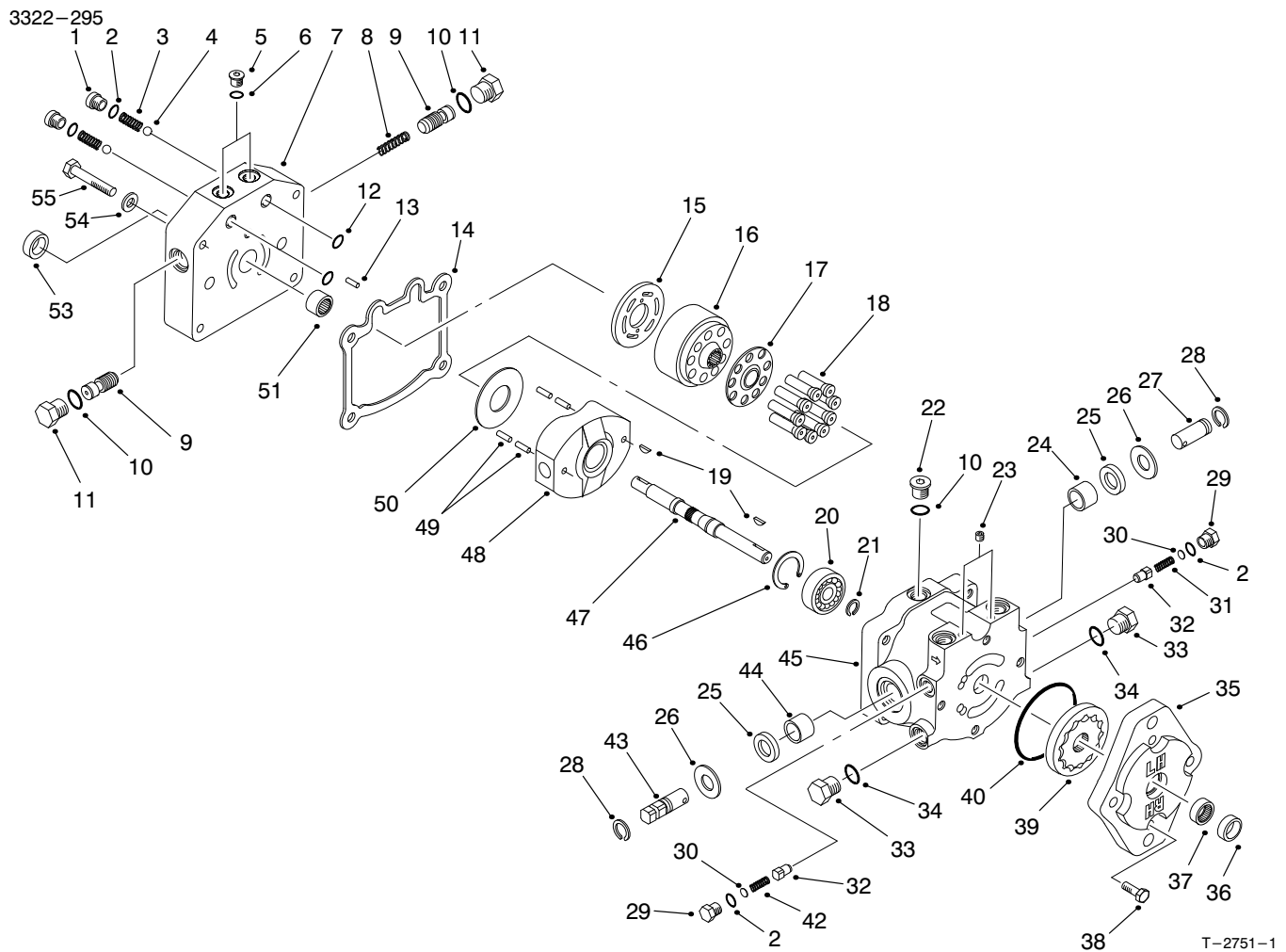


T-2751-1

HYDRAULIC PUMP ASM NO. 95-5842

Ref. No.	Part No.	Description	No. Used
1	25-2650	Plug	2
2	237-86	O-Ring	4
3	25-2640	Spring	2
4	25-2490	Ball	2
5	92-8776	Plug (Incl. Ref. #6)	2
6	92-8777	O-Ring	2
7	95-5808	Cap-End	1
8	95-5815	Spring-Valve, Acceleration	1
9	98-0920	Valve-Acceleration	2
10	237-79	O-Ring	3
11	95-5816	Plug (Incl. Ref. #10)	2
12	237-30	O-Ring	2
13	25-2430	Pin	1
14	25-2400	Gasket-Cap, End	1
15	88-8160	Plate-Valve	1
16	25-2600	Kit-Cylinder Block (Incl. Ref. #17-18)	1
17		Retainer-Slipper	1
18		Asm-Piston	9
19	3257-32	Key-Woodruff	2
20	95-5809	Ball Bearing	1
21	95-5813	Ring-Retaining	1
22	353-988	Plug (Incl. Ref. #10)	1

Ref. No.	Part No.	Description	No. Used
23	285-17	Plug-Pipe	2
24	88-8190	Bearing-Journal	1
25	25-3210	Seal-Lip	2
26	25-2510	Washer	2
27	25-2500	Shaft-Trunnion	1
28	32151-46	Ring-Retaining	2
29	25-2460	Plug (Incl. Ref. #2)	2
30	25-2470	Kit-Shim	2
31	25-2570	Spring	1
32	83-7260	Cone-Charge Relief	2
33	88-8210	Plug (Incl. Ref. #34)	2
34	237-80	O-Ring	2
35	25-2690	Housing-Pump, Charge	1
36	67-8060	Seal-Lip	1
37	67-8050	Bearing-Needle	1
38	322-4	Screw-HH	4
39	95-5812	Asm-Gerotor	1
40	237-95	O-Ring	1
42	25-2480	Spring	1
43	88-8180	Shaft-Trunnion	1
44	252-82	Bearing-Needle	1
45	88-8170	Asm-Housing, Variable (Incl. Ref. #24, 25, & 44)	1
46	32120-11	Ring-Retaining	1

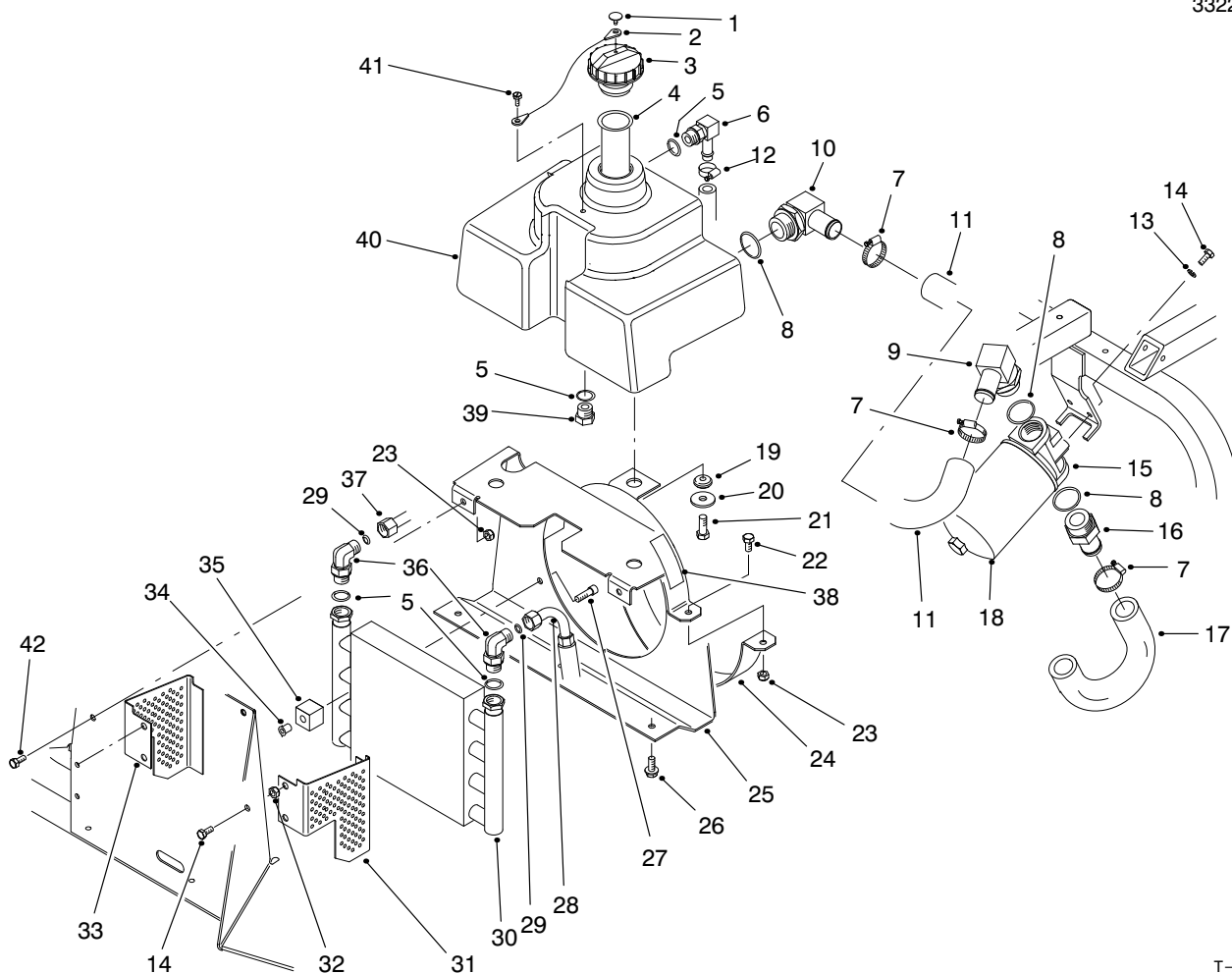


HYDRAULIC PUMP ASM NO. 95-5842 (Continued)

Ref. No.	Part No.	Description	No. Used
47	95-5810	Shaft	1
48	25-2450	Swashplate	1
49	32121-91	Pin-Spring	4
50	25-2380	Plate-Thrust	1
51	46-8400	Bearing-Roller	1
53	88-8230	Seal-Lip	1
54		Washer	1

Ref. No.	Part No.	Description	No. Used
55	323-45	Screw-HH	4
*	25-3180	Kit-Valve, Check (Incl. Ref. #1-4)	1
*	49-8520	Kit-Implement Relief (Incl. Ref. #2 & 29-32)	1
*	49-8510	Kit-Relief, Charge (Incl. Ref. #2, 29-30 & 41-42)	1

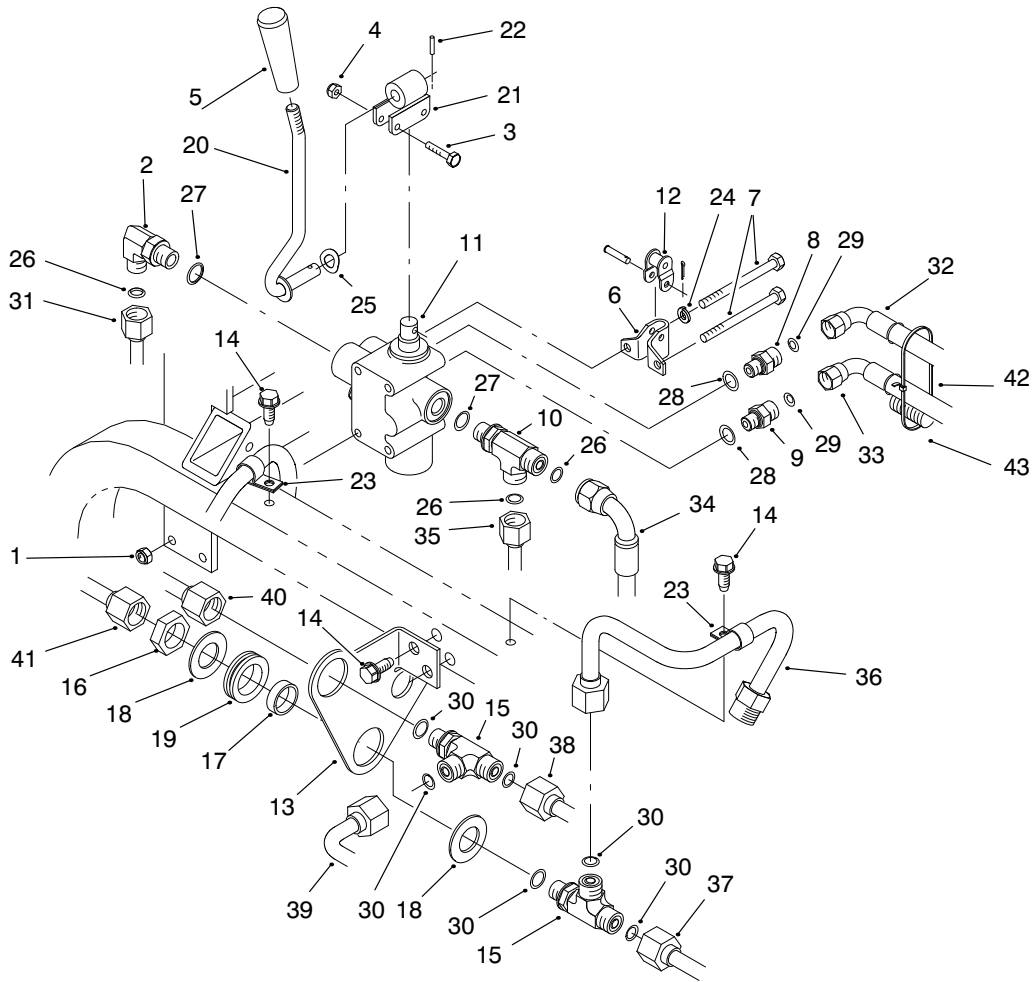
*Not Illustrated



T-1473-4

HYDRAULIC RESERVOIR ASM

Ref. No.	Part No.	Description	No. Used	Ref. No.	Part No.	Description	No. Used
1	2410-73	Retainer-Teather	1	22	322-2	Screw-HH	2
2	75-0540	Teather	1	23	3296-29	Nut-Lock	4
3	93-4365	Asm-Reservoir Cap (Incl. Ref. #1 & 2)	1	24	85-8570	Shroud-Lower	1
4	85-9510	Screen-Filler	1	25	98-8151	Asm-Cooler Mount (Incl. Ref. #38)	1
5	237-79	O-Ring	4	26	32144-11	Screw-HWHTF	3
6	354-120	Fitting-Hydraulic 90° (Incl. Ref. #5)	1	27	3274-86	Screw-HSH	2
7	2412-129	Clamp-Hose	3	28	85-9590	Hose-Hydraulic	1
8	237-146	O-Ring	3	29	237-22	O-Ring	2
9	353-987	Fitting-Hydraulic 90° (Incl. Ref. #8)	1	30	85-9460	Cooler-Oil	1
10	98-0971	Fitting-Hydraulic 90° (Incl. Ref. #8)	1	31	88-8120	Asm-Screen, L.H. (Incl. Ref. #32)	1
11	98-0970	Hose-Hydraulic	1	32	32148-6	Nut-Clinch	4
12	2412-36	Clamp-Hose	1	33	88-8110	Asm-Screen, R.H. (Incl. Ref. #32)	1
13	3253-3	Washer-Lock	2	34	85-9670	Nut-T	2
14	321-4	Screw-HH	6	35	85-9550	Clamp-Rubber	2
15	68-8990	Asm-Hydraulic Filter Head	1	36	340-18	Fitting-Hydraulic 90° (Incl. Ref. #5 & 29)	2
16	354-73	Fitting-Hydraulic Straight (Incl. Ref. #8)	1	37	98-0987	Tube-Hydraulic	1
17	98-0969	Hose-Hydraulic	1	38	93-7272	Decal-Caution	2
18	23-9740	Element-Hydraulic Filter	1	39	353-550	Plug-Hydraulic (Incl. Ref. #5)	1
19	240-11	Grommet	3	40	92-8959	Reservoir-Hydraulic	1
20	63-8410	Washer-Flat	3	41	57-5420	Screw-Shoulder	1
21	323-5	Screw-HH	3	42	322-3	Screw-HH	2

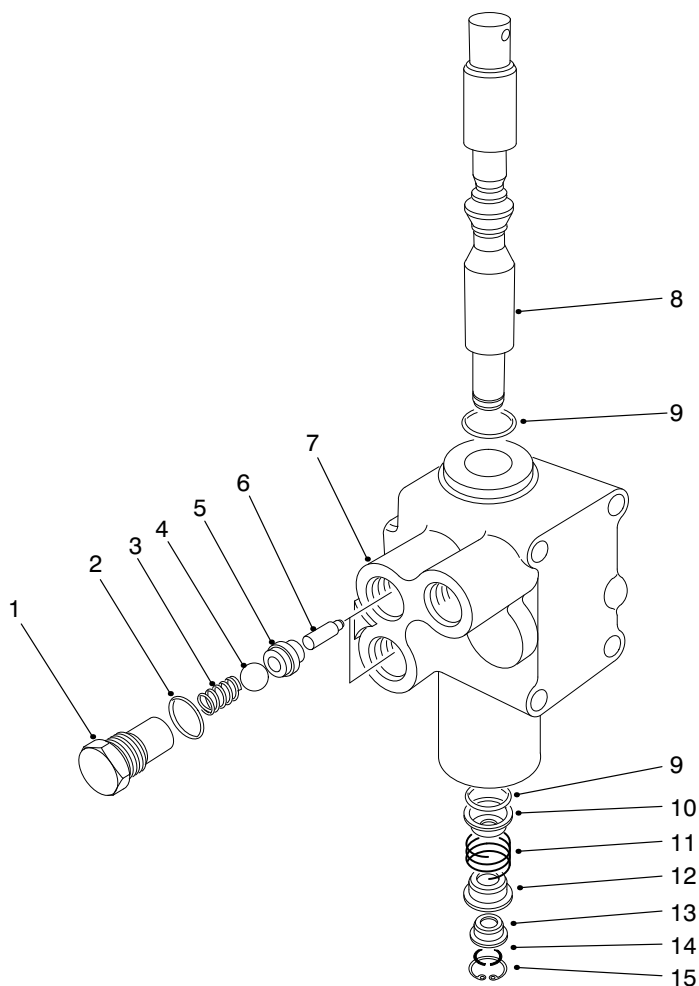


T-2793-3

HYDRAULIC PLUMBING ASM

Ref. No.	Part No.	Description	No. Used
1	3296-8	Nut-Lock	3
2	340-77	Fitting-Hydraulic 90° (Incl. Ref. #26 & 27)	1
3	3290-360	Screw-HH	2
4	3296-2	Nut-Lock	2
5	233-39	Knob-Lever	1
6	88-8480	Bracket-Pivot	1
7	321-23	Screw-HH	4
8	95-9720	Fitting-Hydraulic Orificed (Incl. Ref. #28 & 29)	1
9	340-92	Fitting-Hydraulic Straight (Incl. Ref. #28 & 29)	1
10	340-86	Fitting-Hydraulic Tee (Incl. Ref. #26 & 27)	1
11	43-1710	Asm-Valve	1
12	2710-20	Link-Offset	1
13	98-0963	Bracket-Bulkhead	1
14	32144-11	Screw-HWHTF	4
15	340-121	Fitting-Hydraulic Tee (Incl. Ref. #30)	2
16	340-127	Nut-Bulkhead	2
17	69-8960	Spacer	2
18	69-8930	Washer	4
19	240-5	Grommet	2

Ref. No.	Part No.	Description	No. Used
20	99-1632	Lever-Lift	1
21	98-8159	Pivot-Welded	1
22	32121-73	Pin-Spring	1
23	2412-138	Clamp-R	2
24	3253-3	Washer-Lock	1
25	3290-477	Washer-Curved	1
26	237-22	O-Ring	3
27	237-42	O-Ring	2
28	237-78	O-Ring	2
29	237-21	O-Ring	2
30	237-30	O-Ring	6
31	98-0987	Tube-Hydraulic	1
32	85-9580	Hose-Hydraulic	1
33	85-9570	Hose-Hydraulic	1
34	98-0989	Hose-Hydraulic	1
35	98-0988	Tube-Hydraulic	1
36	98-0938	Tube-Hydraulic	1
37	98-0937	Tube-Hydraulic	1
38	98-0936	Tube-Hydraulic	1
39	98-0932	Tube-Hydraulic	1
40	98-0935	Tube-Hydraulic	1
41	98-0934	Tube-Hydraulic	1
42	3290-378	Tie-Cable	1
43	98-0994	Harness-Wire	1



T-0428

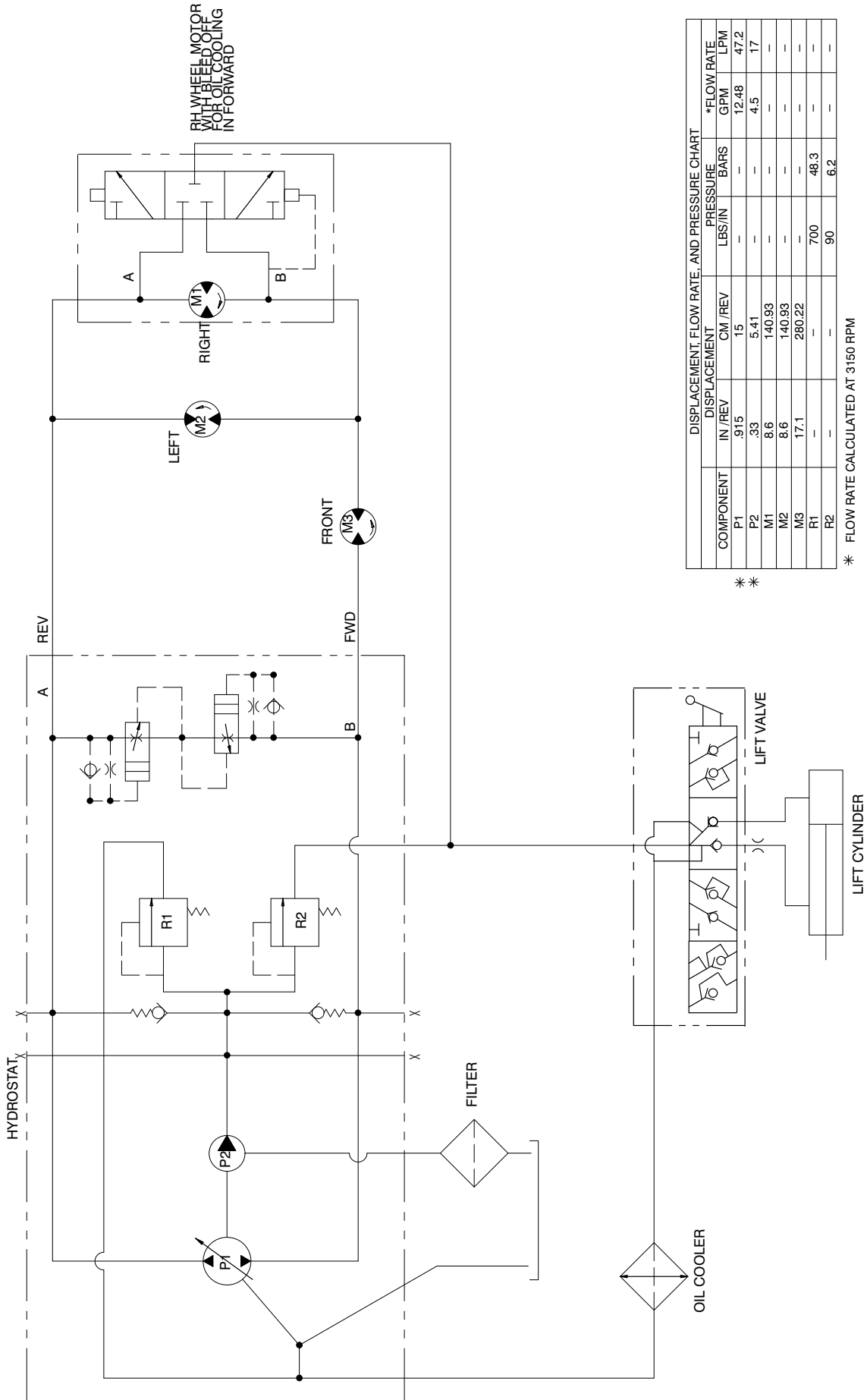
CONTROL VALVE ASM NO. 43-1710

Ref. No.	Part No.	Description	No. Used
1	22-8330	Plug	2
2	237-42	O-Ring	2
3	22-8340	Spring	2
4	22-8350	Ball	2
5	22-8370	Seat-Check Valve	2
6	22-8360	Pin-Cam	2
†7		Body	1
8	22-8420	Spool	1

Ref. No.	Part No.	Description	No. Used
9	22-8500	O-Ring	2
10	22-8380	Retainer-Spring	1
11	22-8410	Spring	1
12	22-8390	Spring Retainer	1
13	22-8400	Spacer-Float	1
14	22-8480	Spring-Ring Spool	1
15	22-8490	Ring-Retaining	1

†Not Serviced Separately

HYDRAULIC SCHEMATIC

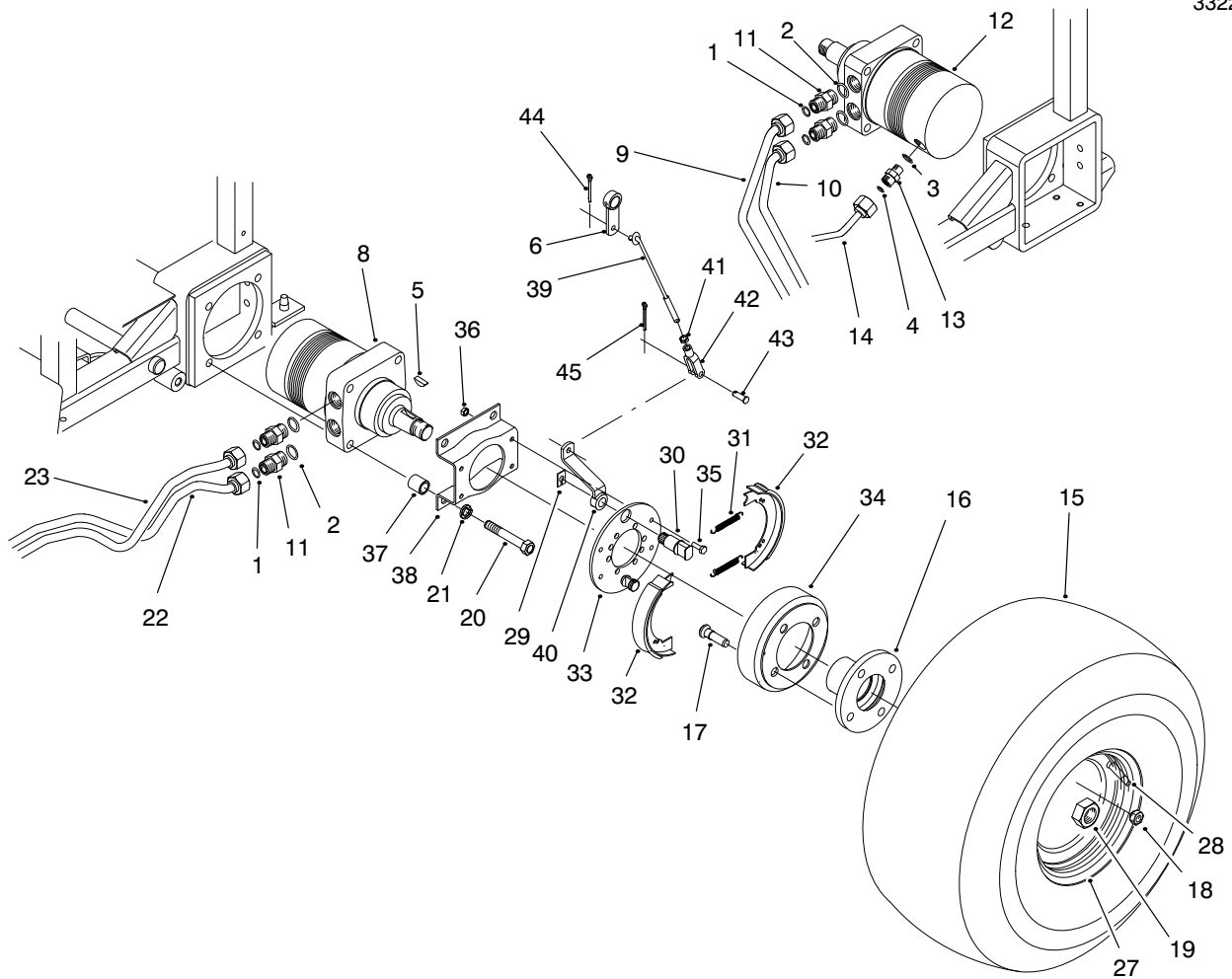


DISPLACEMENT, FLOW RATE, AND PRESSURE CHART

COMPONENT	DISPLACEMENT			PRESSURE			*FLOW RATE	
	IN /REV	CM /REV	LBS/IN	IN/IN	BARS	GPM	LPM	
P1	.915	15	-	-	-	12.48	47.2	
P2	.33	5.41	-	-	-	4.5	17	
M1	8.6	140.93	-	-	-	-	-	
M2	8.6	140.93	-	-	-	-	-	
M3	17.1	280.22	-	-	-	-	-	
R1	-	-	700	-	48.3	-	-	
R2	-	-	90	-	6.2	-	-	

**

* FLOW RATE CALCULATED AT 3150 RPM

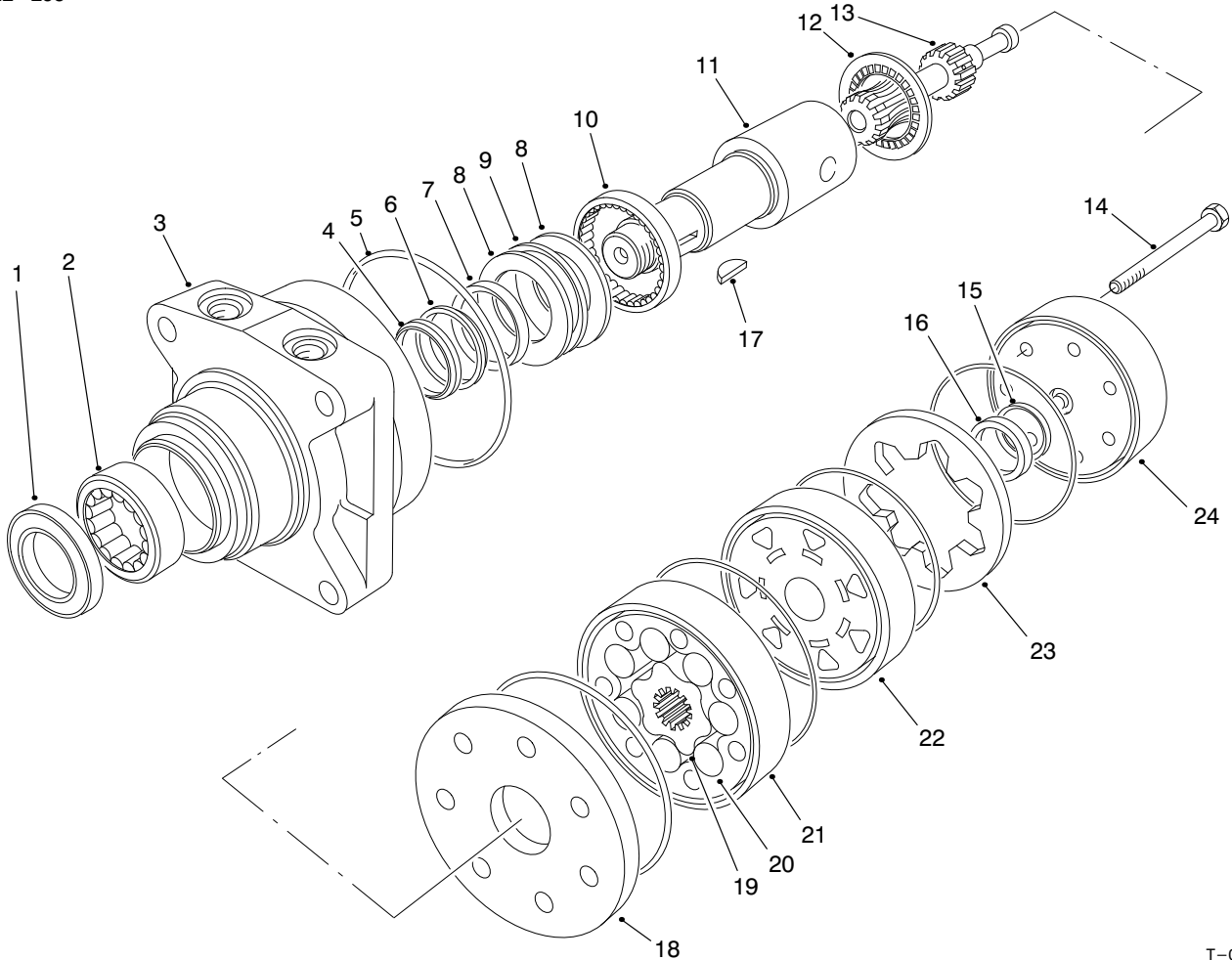


T-2795

REAR WHEEL ASM

Ref. No.	Part No.	Description	No. Used	Ref. No.	Part No.	Description	No. Used
1	237-30	O-Ring	4	21	3253-7	Washer-Lock	8
2	237-80	O-Ring	4	22	98-0937	Asm-Hydraulic Tube	1
3	237-42	O-Ring	1	23	98-0936	Asm-Hydraulic Tube	1
4	237-22	O-Ring	1	27	94-6116	Rim	2
5	3257-42	Key-Woodruff	1	28	232-35	Valve-Stem	2
6	83-9310	Lever-Brake	2	29	70-9850	Retainer	2
8	97-3055	Asm-Hydraulic Motor (Incl. Ref. #5)	1	30	70-9860	Shaft-Cam	2
9	98-0934	Asm-Hydraulic Tube	1	31	70-9880	Spring-Extension	4
10	98-0935	Asm-Hydraulic Tube	1	32	70-9840	Shoe-Brake	4
11	340-6	Fitting-Hydraulic Straight (Incl. Ref. #1 & 2)	4	33	70-9870	Plate-Brake Backing	2
12	98-0959	Asm-Hydraulic Motor (Incl. Ref. #5)	1	34	10-6850	Drum-Brake	2
13	340-2	Fitting-Hydraulic Straight (Incl. Ref. #3 & 4)	1	35	321-4	Screw-HH	8
14	98-0988	Asm-Hydraulic Tube	1	36	3296-42	Nut-Lock	8
15	85-8290	Tire	2	37	92-1715	Spacer	8
*	116973	Tire-Turf (Optional)	2	38	84-2000	Bracket-Brake	2
16	93-6838	Hub-Wheel	2	39	95-5824	Rod-Adjustment	2
17	85-6540	Stud-Drive	8	40	93-6850	Lever-Brake	2
18	242-50	Nut-Lug	8	41	3220-2	Nut-Jam	2
19	26-3790	Nut-Lock	2	42	282-2	Clevis-Adjustment	2
20	325-13	Screw-HH	8	43	283-1	Pin-Clevis	2
				44	3272-6	Pin-Cotter	2
				45	3272-10	Pin-Cotter	2
				*	71-1500	Asm-Brake (Incl. Ref. #29-33)	2

*Not Illustrated



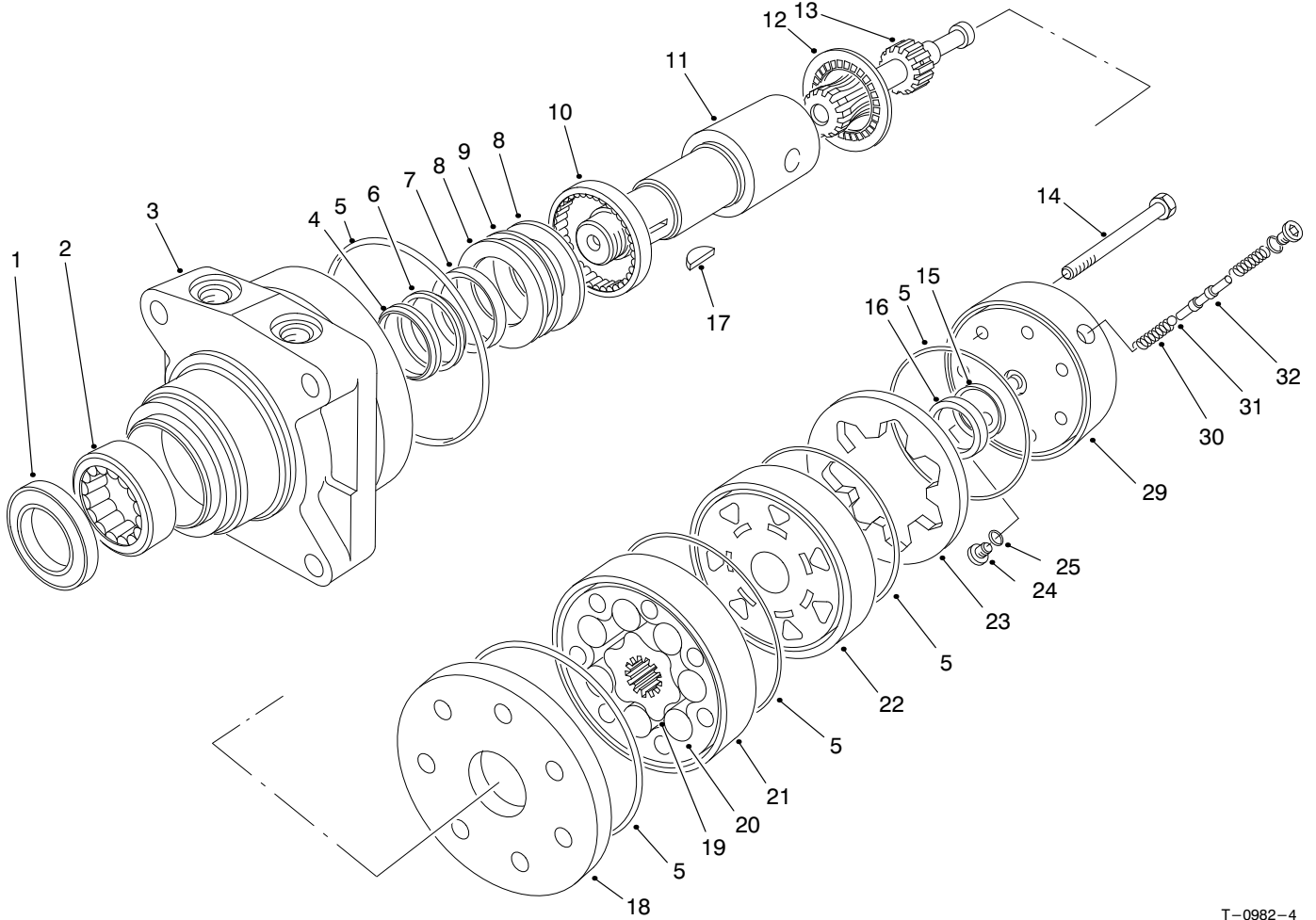
T-0983-2

LEFT REAR HYDRAULIC MOTOR ASM NO. 97-3055

Ref. No.	Part No.	Description	No. Used
1		Seal-Dirt & Water	1
2		Bearing	1
3		Housing	1
4		Washer-Backup	1
5		Seal-Rings	5
6		Washer-Backup	1
7		Seal-Inner	1
8		Washer-Thrust	2
9		Bearing-Thrust	1
10		Bearing	1
11	76-0860	Shaft-Coupling	1
12	76-0850	Bearing-Thrust	1
13		Link-Drive	1
14		Screw-HH	7
15		Seal-Commutator	1
16		Commutator	1

Ref. No.	Part No.	Description	No. Used
17	3257-42	Key-Woodruff	1
18	76-0870	Plate-Wear	1
19		Rotor	1
20		Vane	7
21		Stator	1
22	76-0840	Manifold	1
23		Ring-Commutator	1
24	76-0940	Asm-Cover, End	1
*		Rotor Set (Incl. Ref. #19-21)	1
*	76-0880	Asm-Commutator (Incl. Ref. #15, 16 & 23)	1
*	94-8178	Kit-Seal (Incl. Ref. #1, 4-7 & 15)	1
*	76-0810	Asm-Housing (Incl. Ref. #2, 3 & 8-10)	1

*Not Illustrated



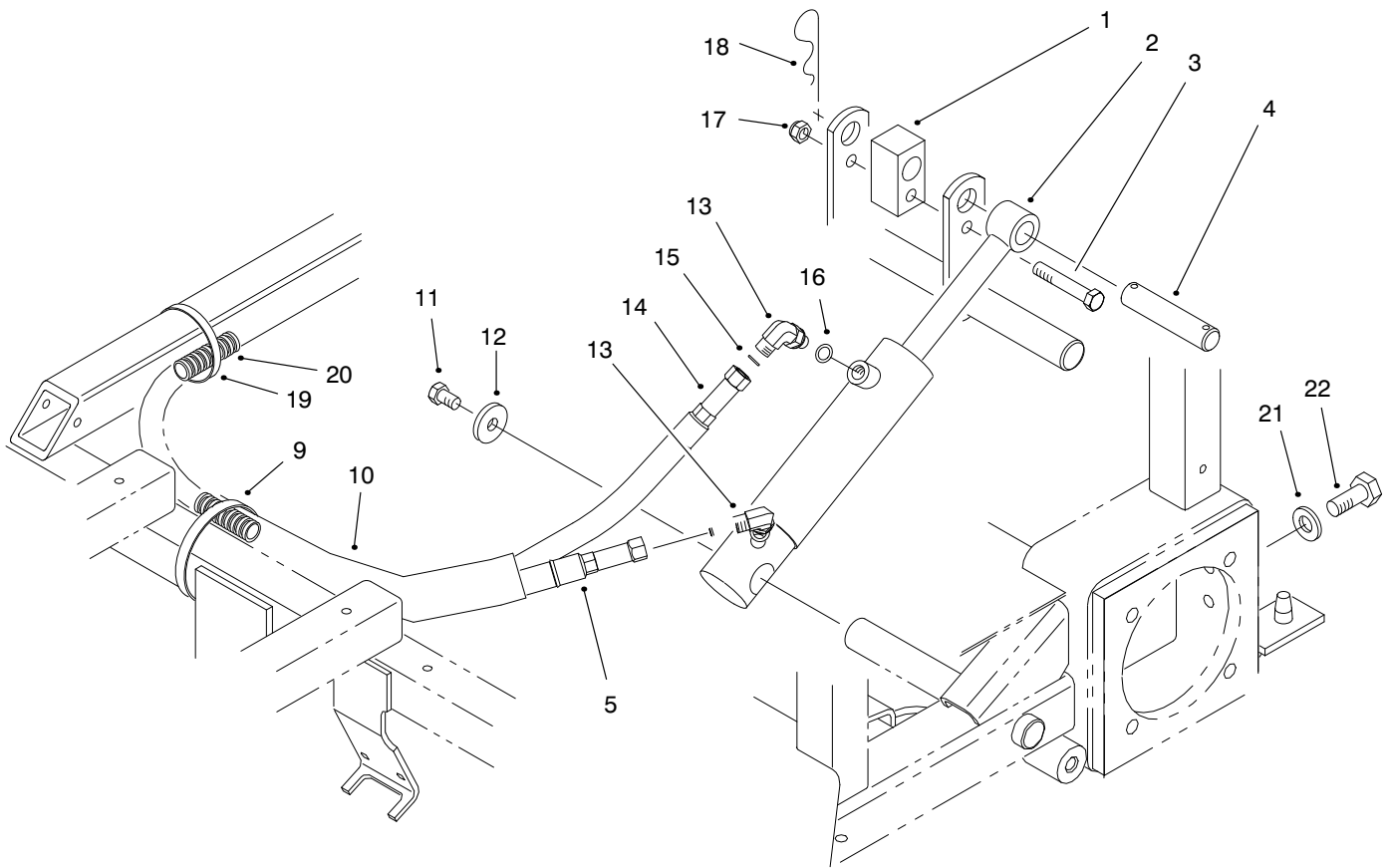
T-0982-4

RIGHT REAR HYDRAULIC MOTOR ASM NO. 98-0959

Ref. No.	Part No.	Description	No. Used
1		Seal-Dirt & Water	1
2		Bearing	1
3		Housing	1
4		Washer-Backup	1
5		Seal-Rings	5
6		Washer-Backup	1
7		Seal-Inner	1
8		Washer-Thrust	2
9		Bearing-Thrust	1
10		Bearing	1
11	76-0860	Shaft-Coupling	1
12	76-0850	Bearing-Thrust	1
13		Link-Drive	1
14		Screw-HH	7
15		Seal-Commutator	1
16		Commutator	1
17	3257-42	Key-Woodruff	1
18	76-0870	Plate-Wear	1
19		Rotor	1

Ref. No.	Part No.	Description	No. Used
20		Vane	7
21		Stator	1
22		Manifold	1
23		Ring-Commutator	1
24	353-990	Plug	2
25		O-Ring	2
29	76-0890	Asm-Cover End (Incl. Ref. #24-25 & 30-32)	1
30		Spring	2
31		Ball	1
32		Valve-Shuttle	1
*		Rotor Set (Incl. Ref. #19-21)	1
*	76-0880	Asm-Commutator (Incl. Ref. #15, 16 & 23)	1
*	94-8178	Kit-Seal (Incl. Ref. #1, 4-7 & 15)	1
*	76-0810	Asm-Housing (Incl. Ref. #2, 3 & 8-10)	1

*Not Illustrated

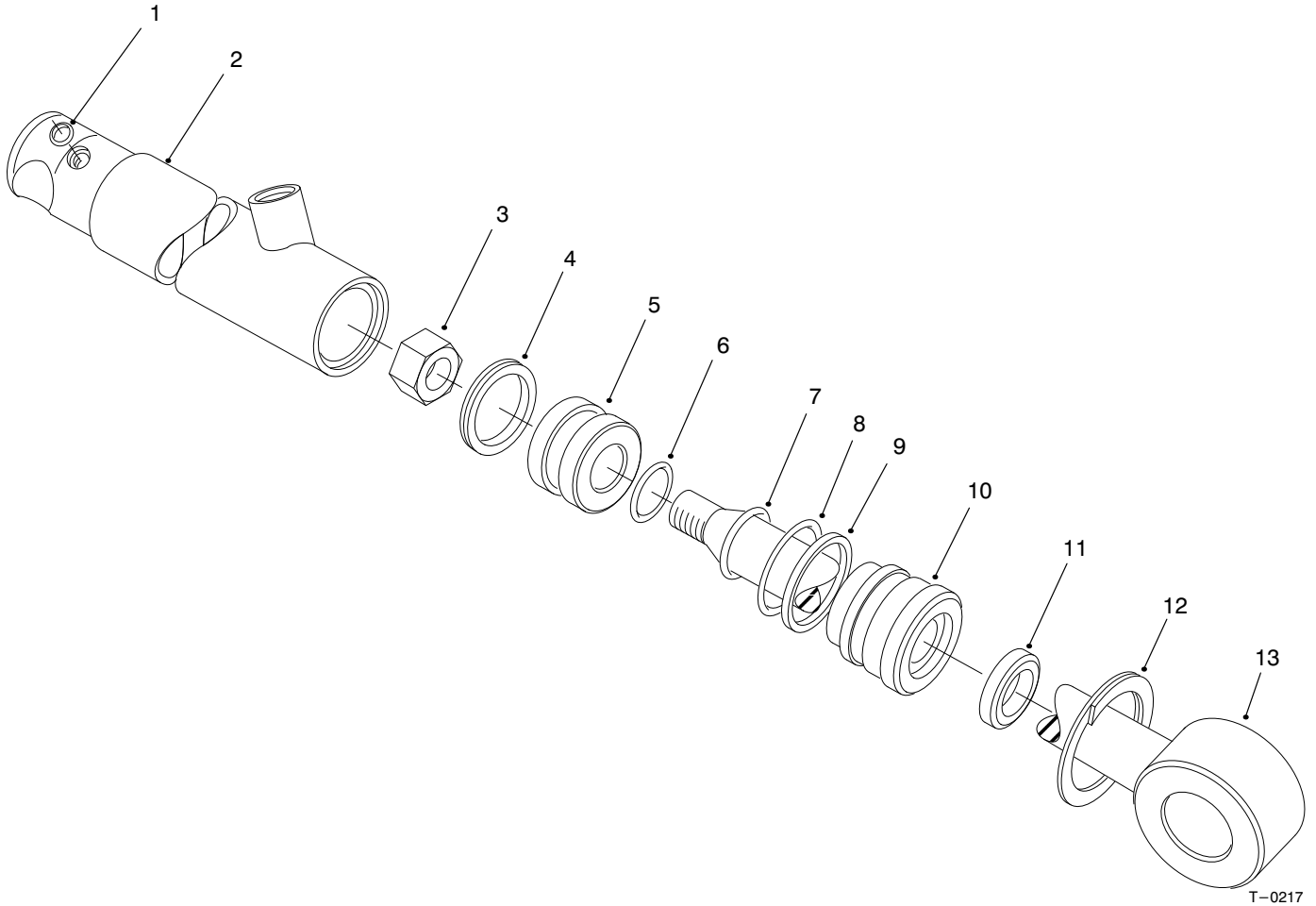


T-2752-3

LIFT ASM

Ref. No.	Part No.	Description	No. Used
1	85-9160	Spacer	1
2	83-7000	Asm-Cylinder	1
3	323-11	Screw-HH	1
4	85-9170	Pin-Cylinder	1
5	85-9580	Hose-Hydraulic	1
9	3334-945	Tie-Cable	1
10	56-7981	Sleeve-Protective	1
11	323-34	Screw-HH	1
12	53-6380	Washer	1
13	340-142	Fitting-Hydraulic 90° (Incl. Ref. #15 & 16)	2

Ref. No.	Part No.	Description	No. Used
14	85-9570	Hose-Hydraulic	1
15	237-21	O-Ring	2
16	237-78	O-Ring	2
17	3296-39	Nut-Lock	1
18	3290-256	Pin-Hair	2
19	3290-379	Tie-Wire	1
20	98-0994	Harness-Wire	1
21	3256-26	Washer-Flat	4
22	325-5	Screw-HH	4

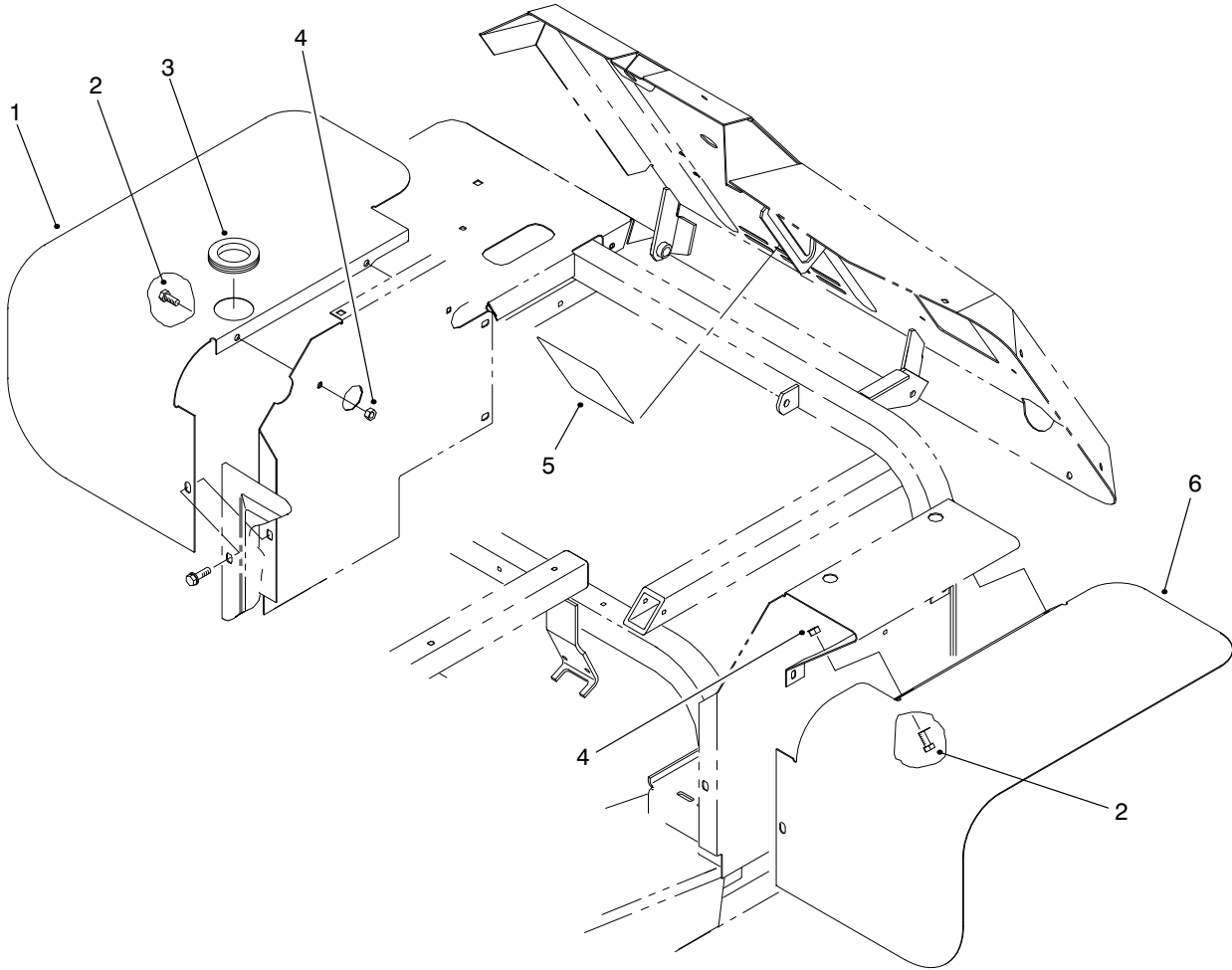


T-0217

HYDRAULIC LIFT CYLINDER ASM NO. 83-7000

Ref. No.	Part No.	Description	No. Used
1	237-78	O-Ring	2
2	43-5260	Barrel w/Clevis & Ports	1
3	32152-10	Nut	1
4		Uniring-Grooved	1
5	70-2780	Piston	1
6		O-Ring	1
7		Poly-Pack	1
8		O-Ring	1

Ref. No.	Part No.	Description	No. Used
9		Back-Up	1
10	70-2770	Head	1
11		Seal-Dust	1
12	43-5220	Ring-Retaining	1
13	43-5230	Shaft with Clevis	1
14	83-7250	Kit-Seal Repair (Incl. Ref. #4, 6-9 & 11)	1

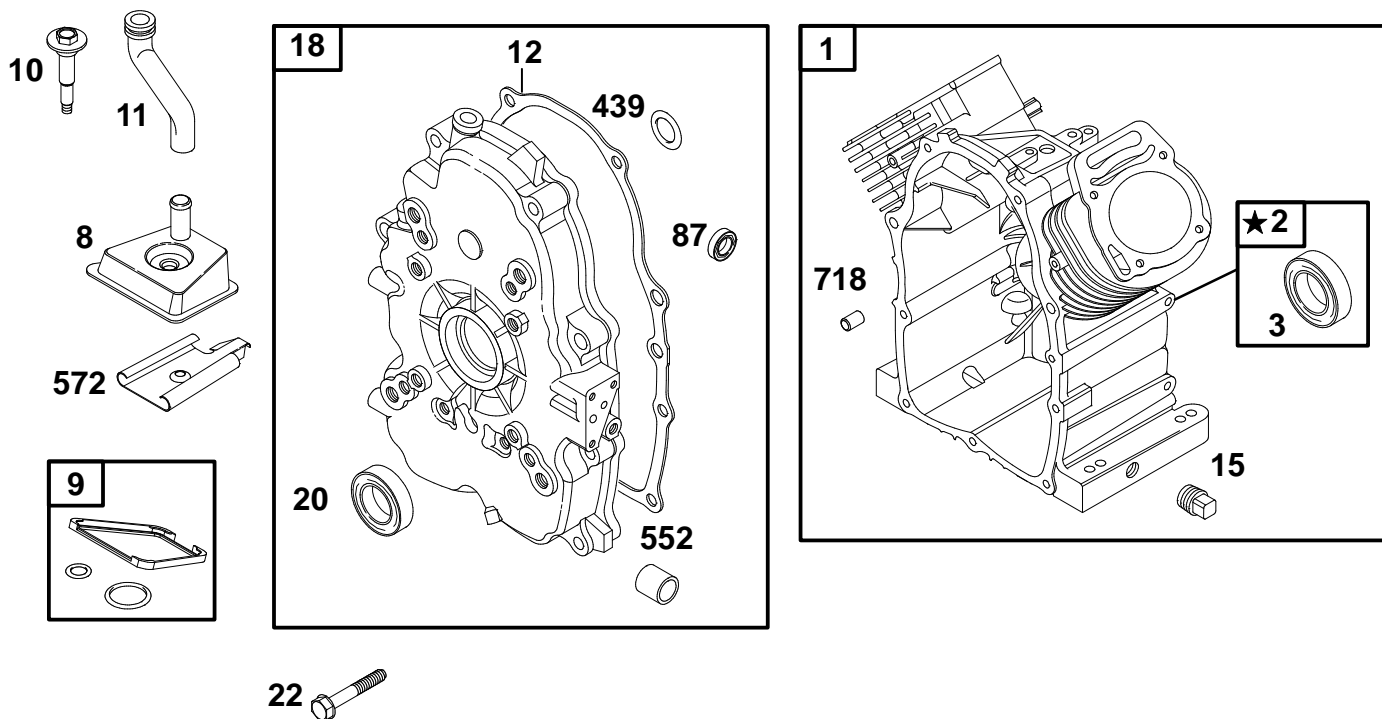


T-2935

FENDER ASM-EUROPE

Ref. No.	Part No.	Description	No. Used
1	98-0997	Fender-RH	1
2	322-3	Screw-HH	4
3	240-2	Grommet	1

Ref. No.	Part No.	Description	No. Used
4	3296-29	Nut-Lock	4
5	93-9081	Decal-Blank	1
6	98-0998	Fender-LH	1



1019 LABEL KIT
1058 OWNER'S MANUAL

★ **REQUIRES SPECIAL TOOLS TO INSTALL. SEE REPAIR INSTRUCTION MANUAL.**

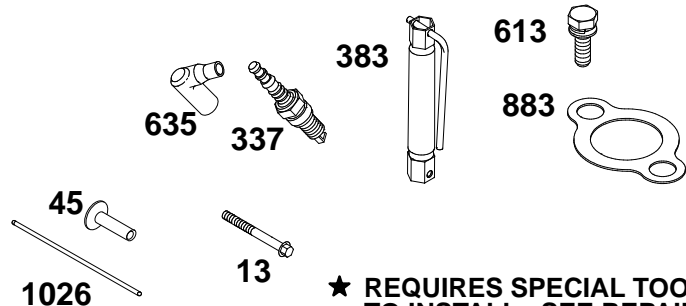
Assemblies include all parts shown in frames.

ENGINE BRIGGS & STRATTON MODEL 350447-1116-E1

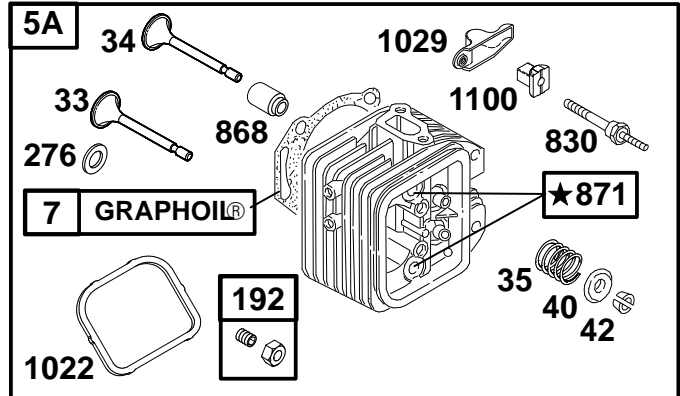
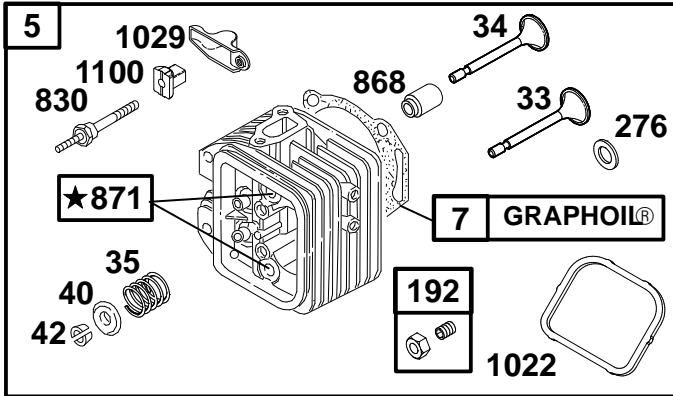
Ref. No.	Part No.	Description	No. Used
1	808441	Cylinder Assembly	1
2	808534	Bushing	1
★3	805101	Seal-Oil	1
8	807795	Breather Assembly	1
★9	807688	Gasket-Breather	1
10	805751	Screw (Breather Assembly)	1
11	806083	Tube-Breather	1
★12	806190	Gasket-Crankcase	1
15	94239	Plug-Oil Drain	1
18	808502	Cover-Crankcase	1

Ref. No.	Part No.	Description	No. Used
★20	805049	Seal-Oil	1
22	805696	Screw (Crankcase Cover)	1
87	805054	Gear Reduction Oil Seal	1
★439	806191	Seal-O-Ring	1
552	805412	Bushing-Governor Shaft	1
572	805197	Breather Baffle	1
718	805103	Pin Locating	1
1019	808036	Label Kit	1
1058	273685	Owner's Manual	1

★ Included in Gasket Set-Part No. 808389



★ REQUIRES SPECIAL TOOLS TO INSTALL. SEE REPAIR INSTRUCTION MANUAL.



Assemblies include all parts shown in frames.

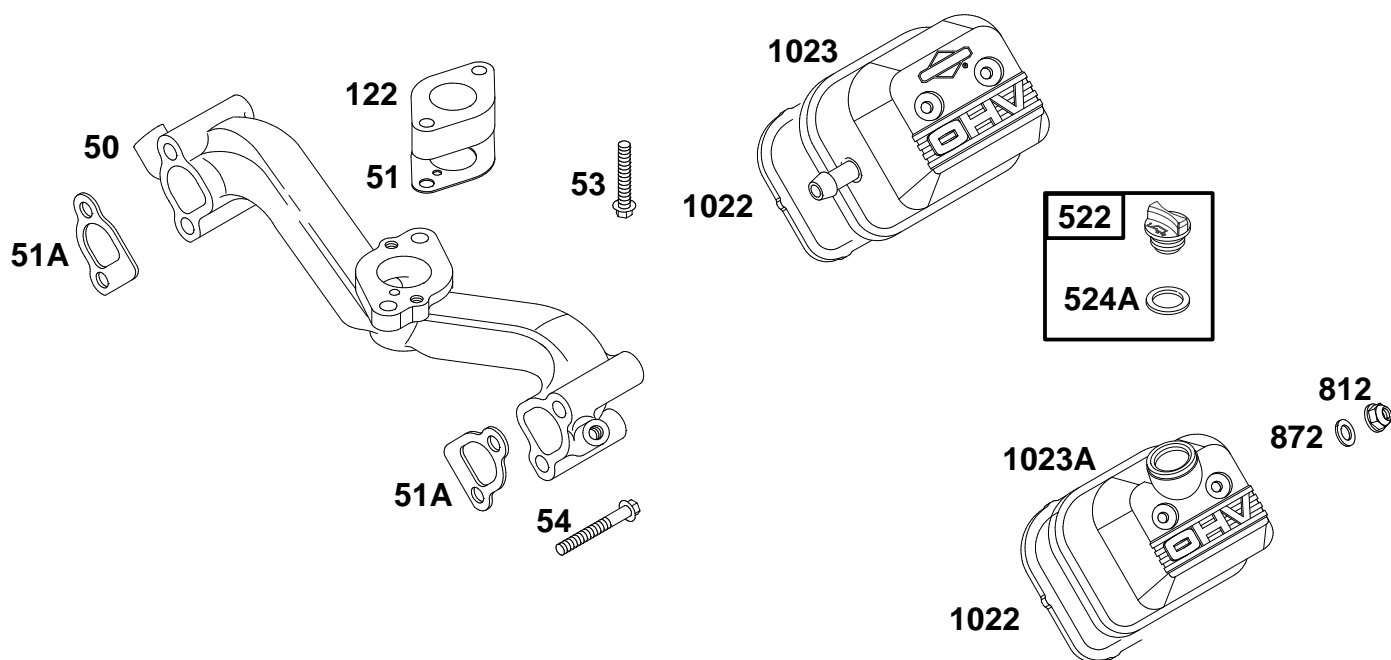
ENGINE BRIGGS & STRATTON MODEL 350447-1116-E1

Ref. No.	Part No.	Description	No. Used
5	808383	Head-Cylinder (No. 1)	1
5A	808384	Head-Cylinder (No. 2)	1
★Δ7	806086	Gasket-Cylinder Head	1
13	805097	Screw (Cylinder Head)	1
33	807681	Valve-Exhaust	1
34	807680	Valve-Intake	1
35	805937	Spring-Valve	1
40	805092	Retainer-Valve	1
42	807683	Retainer-Valve	1
45	262679	Tappet-Valve	1
192	807623	Screw (Valve Adj.)	1
★Δ276	805420	Sealing Washer	1
337	496018	Plug-Spark	1

Ref. No.	Part No.	Description	No. Used
383	19374	Wrench-Spark Plug	1
613	805158	Screw (Exhaust Manifold)	1
635	805529	Boot-Spark Plug	1
830	806037	Stud (Rocker Arm)	1
868	805094	Seal-Valve	1
871	805084	Bushing-Guide	1
883	805024	Gasket-Exhaust	1
★Δ1022	806039	Gasket-Rocker Cover	1
1026	805352	Rod-Push (Steel Intake)	1
1026	805617	Rod-Push (Aluminum-Exhaust)	1
1029	806036	Rocker Arm	1
1100	806038	Rocker Arm Pivot	1

★ Included in Gasket Set-Part No. 808389

Δ Included in Valve Overhaul Kit-Part No. 808391



Assemblies include all parts shown in frames.

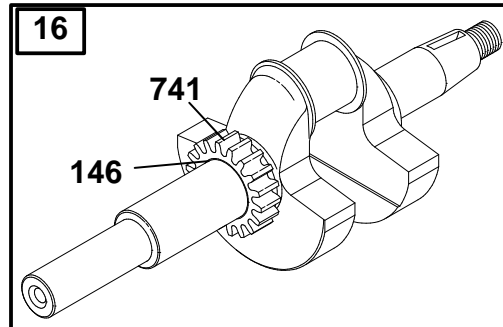
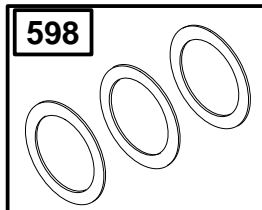
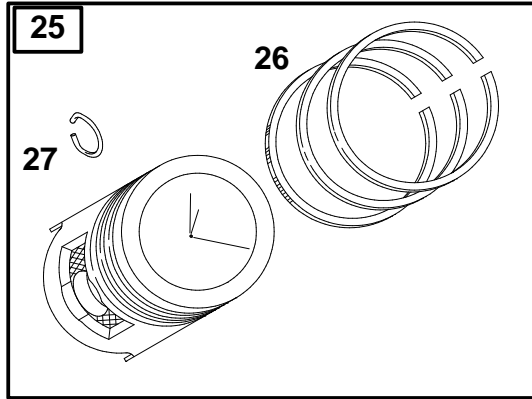
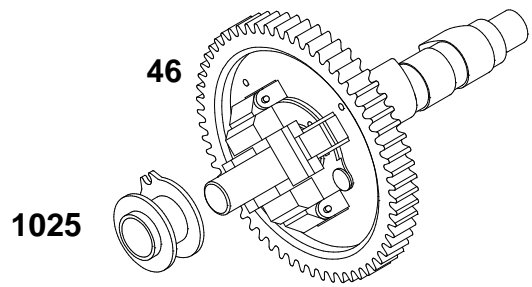
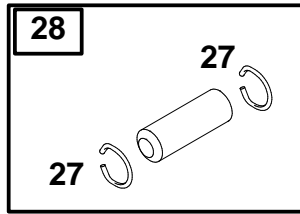
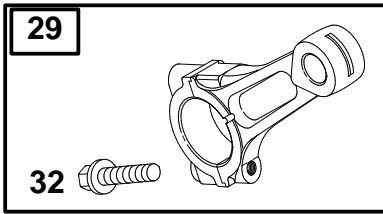
ENGINE BRIGGS & STRATTON MODEL 350447-1116-E1

Ref. No.	Part No.	Description	No. Used
50	805772	Manifold-Intake	1
★51	805700	Gasket-Intake	1
★△51A	805023	Gasket-Intake	1
53	805466	Screw (Carburetor)	1
54	805006	Screw (Intake Manifold)	1
122	805673	Spacer-Carburetor	1

Ref. No.	Part No.	Description	No. Used
★△872	805420	Washer (Rocker Cover)	1
522	491832	Dipstick-Fill Plug	1
524A	271983	Seal-Filler Plug	1
△812	805019	Nut (Rocker Cover)	1
★△1022	806039	Gasket-Rocker Cover	1
1023	805100	Cover-Rocker	1
1023A	808032	Cover-Rocker	1

★ Included in Gasket Set-Part No. 808389

△ Included in Valve Overhaul Kit-Part No. 808391

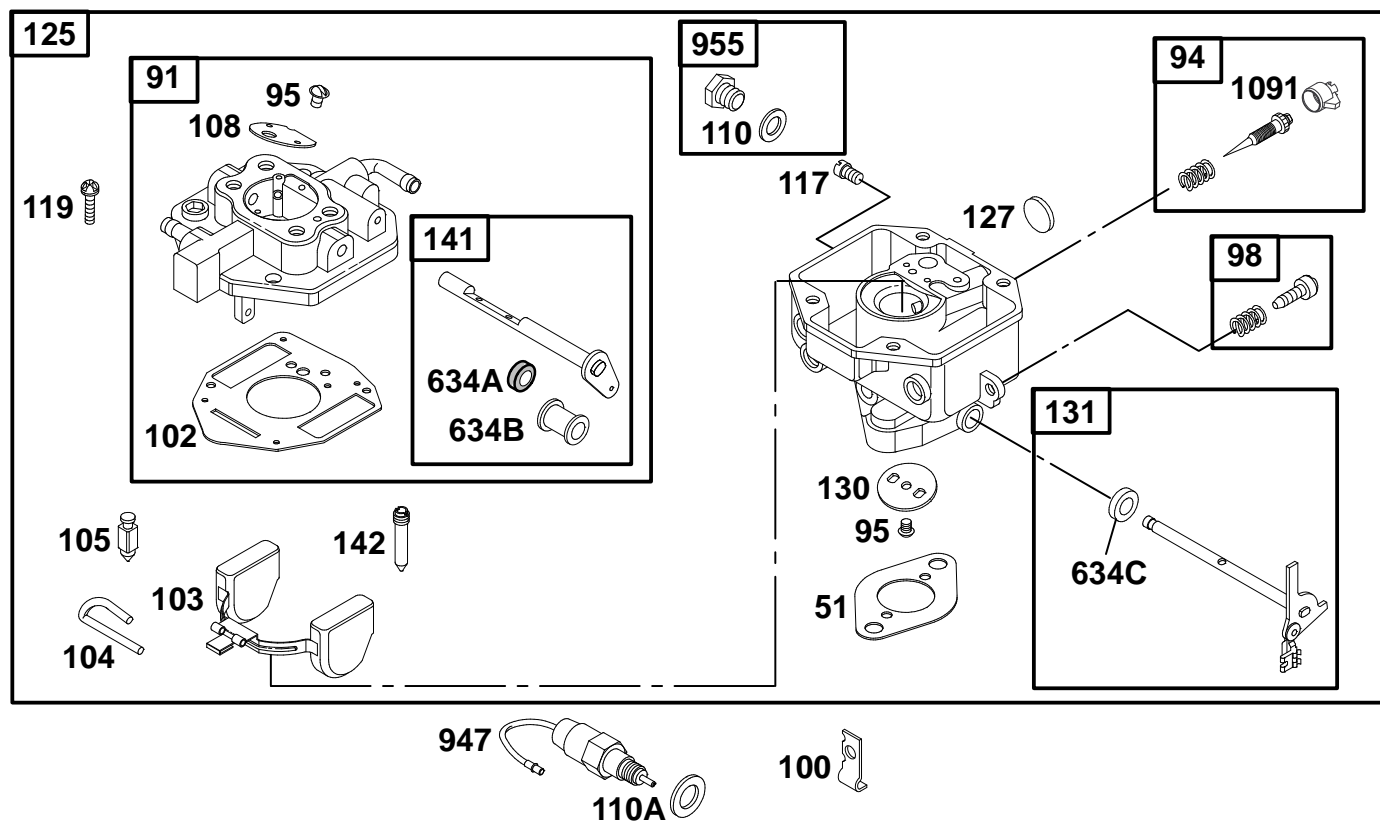


Assemblies include all parts shown in frames.

ENGINE BRIGGS & STRATTON MODEL 350447-1116-E1

Ref. No.	Part No.	Description	No. Used
16	692089	Crankshaft	1
17	805754	Bearing-Ball	1
25	808326	Piston Assembly (Standard)	1
25	808336	Piston Assy. (.010" Oversize)	1
25	808337	Piston Assy. (.020" Oversize)	1
25	808338	Piston Assy. (.030" Oversize)	1
26	807889	Ring Set (Standard)	1
26	807994	Ring Set (.010" Oversize)	1
26	807995	Ring Set (.020" Oversize)	1
26	807996	Ring Set (.030" Oversize)	1

Ref. No.	Part No.	Description	No. Used
27	805099	Lock-Piston Pin	1
28	807886	Pin-Piston	1
29	807900	Rod-Connecting (Standard)	1
29	807803	Rod-Conn. (.020" Undersize)	1
32	805395	Screw (Connecting Rod)	1
46	691537	CamShaft	1
146	94196	Key-Timing	1
377	808095	Woodruff Key	1
598	807625	Washer Set	1
741	805984	Gear-Timing	1
1025	805313	Spool-Governor	1



Assemblies include all parts shown in frames.

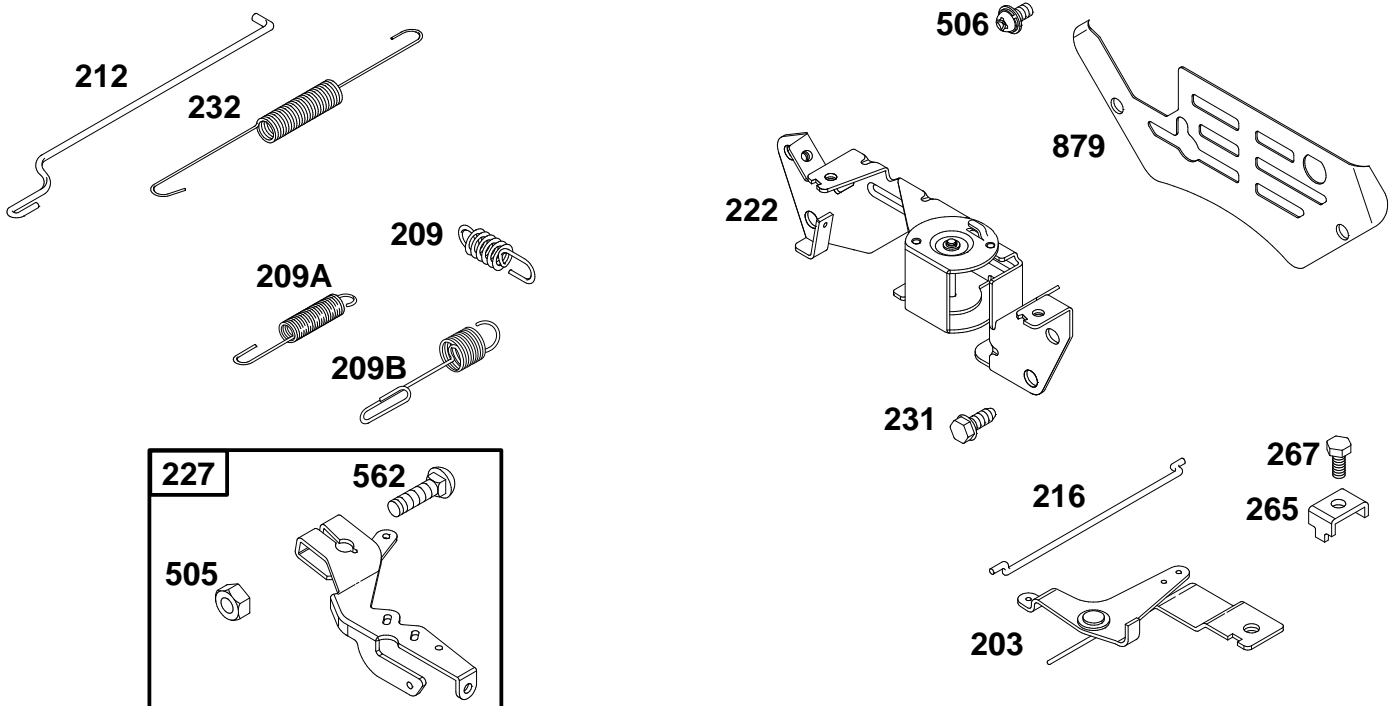
ENGINE BRIGGS & STRATTON MODEL 350447-1116-E1

Ref. No.	Part No.	Description	No. Used
★51	805700	Gasket-Intake	1
91	808396	Body Assembly-Upper	1
●94	808399	Valve-Idle Adjustment	1
●95	805538	Screw (Throttle Valve)	1
98	808177	Kit-Idle Speed	1
100	806283	Stop-Throttle	1
●102	805541	Gasket-Carburetor Body	1
103	805546	Float-Carburetor	1
●104	805545	Pin-Float Hinge	1
●105	805547	Valve-Needle	1
108	806134	Valve-Choke	1
●110	805549	Washer-Seal	1
●110A	806137	Washer	1
●117	806126	Jet-Main (Standard)	1
117	808413	Jet-Main (High Altitude)	1

★ Included in Gasket Set-Part No. 808389

Ref. No.	Part No.	Description	No. Used
119	805540	Screw (Upper Body Assembly)	1
125	808370	Carburetor (Pump Feed)	1
●127	805559	Plug-Welch	1
130	806132	Valve-Throttle	1
131	808397	Throttle Shaft Kit	1
141	808398	Choke Shaft Kit	1
●142	806128	Nozzle-Carburetor	1
●634A	805544	Seal-Shaft	1
●634B	805543	Collar-Choke Shaft	1
●634C	806131	Seal-Shaft	1
947	807664	Solenoid-Fuel	1
955	807723	Plug-Carburetor	1
●1091	805862	Cap-Limiter	1

● Included in Carburetor Kit-Part No. 808395

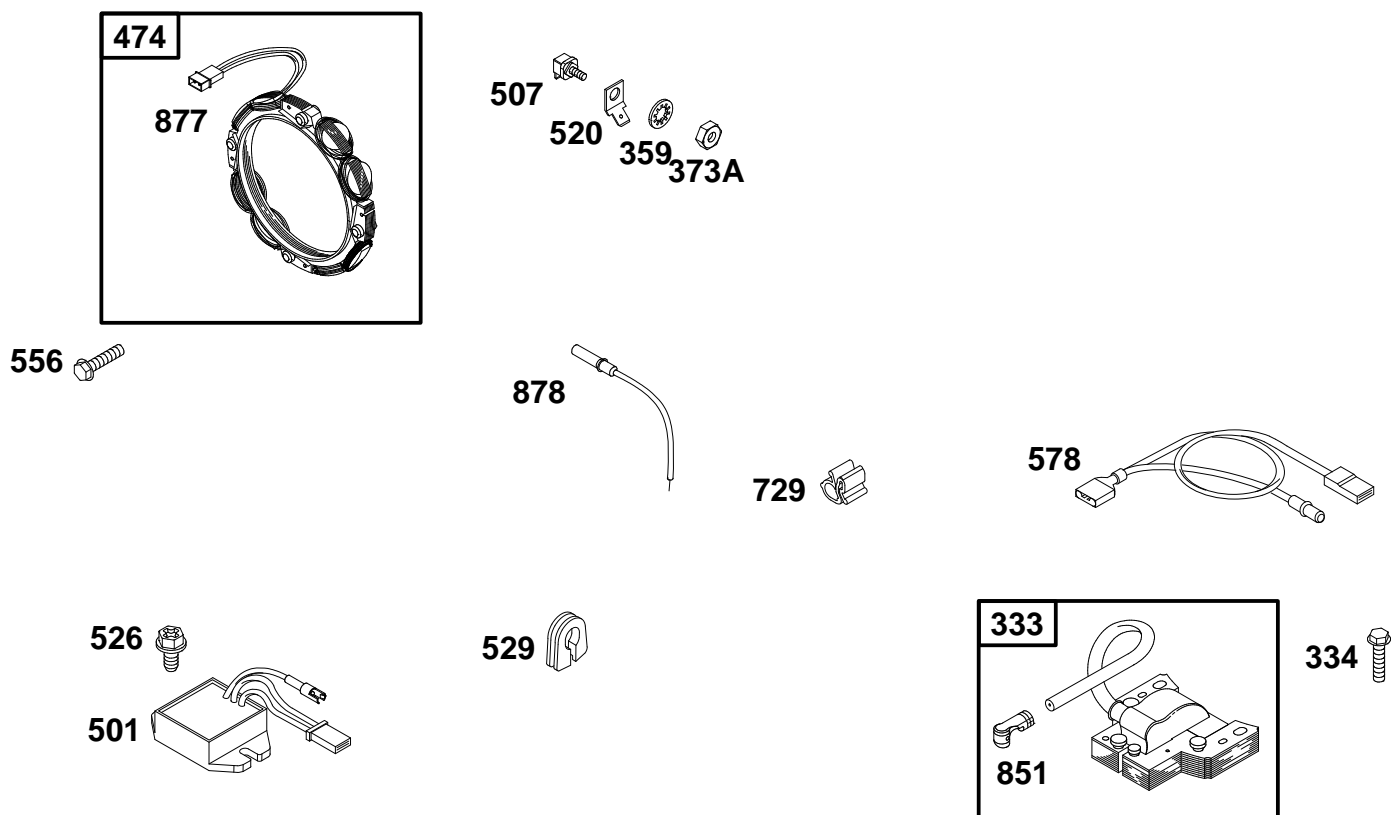


Assemblies include all parts shown in frames.

ENGINE BRIGGS & STRATTON MODEL 350447-1116-E1

Ref. No.	Part No.	Description	No. Used
203	807609	Control-Choke	1
209	805463	Spring-Governor (Main)	1
209A	805450	Spring-Governor (Secondary)	1
209B	806060	Spring-Governor (Idle)	1
212	805480	Link-Throttle	1
216	805439	Link-Choke	1
222	808195	Bracket-Control (Used With Control Lever and/or Wire With a "Z" Formed End)	1
227	807528	Lever-Governor	1

Ref. No.	Part No.	Description	No. Used
232	805465	Spring-Link	1
265	221535	Clamp-Casing	1
267	805762	Screw (Casing Clamp)	1
321	805025	Screw (Control Bracket)	1
505	805383	Nut (Governor Lever)	1
506	805009	Screw (Carburetor Cover)	1
562	805381	Bolt (Governor Lever)	1
879	805841	Cover-Carburetor	1

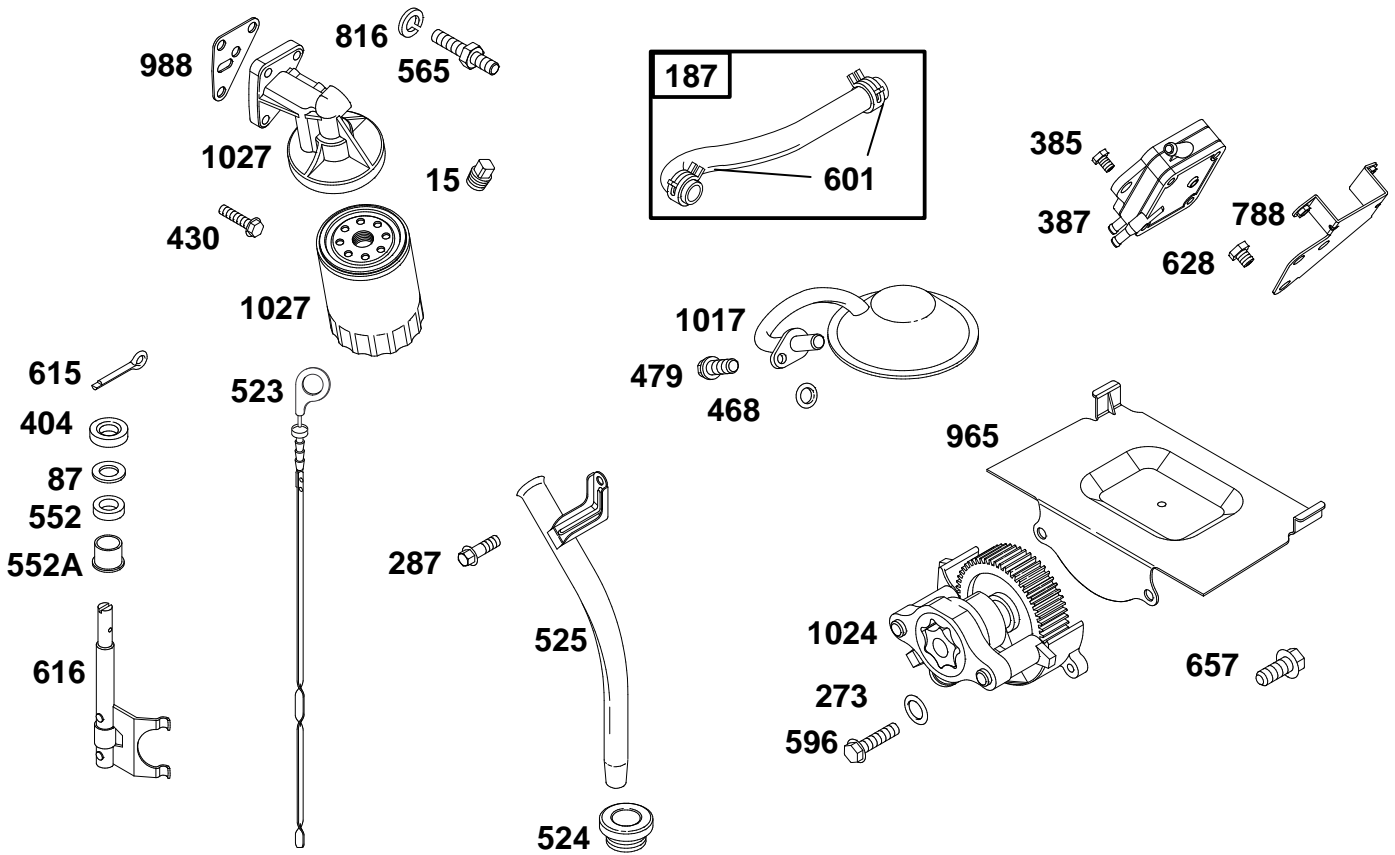


Assemblies include all parts shown in frames.

ENGINE BRIGGS & STRATTON MODEL 350447-1116-E1

Ref. No.	Part No.	Description	No. Used
333	492341	Armature--Magneto	1
334	805407	Screw (Magneto Armature)	1
359	92791	Washer--Lock	1
373A	90576	Nut--Hex.	1
556	805407	Screw (Alternator)	1
474	393295	Alternator	1
501	394890	Regulator	1
507	398525	Insulator	1

Ref. No.	Part No.	Description	No. Used
520	93722	Terminal	1
526	805448	Screw (Regulator)	1
529	805641	Grommet	1
578	493792	Wire Assembly	1
729	280470	Clip--Wire	1
851	493880	Terminal--Cable	1
877	399916	Harness--Alternator	1
878	393422	Harness--Alternator	1



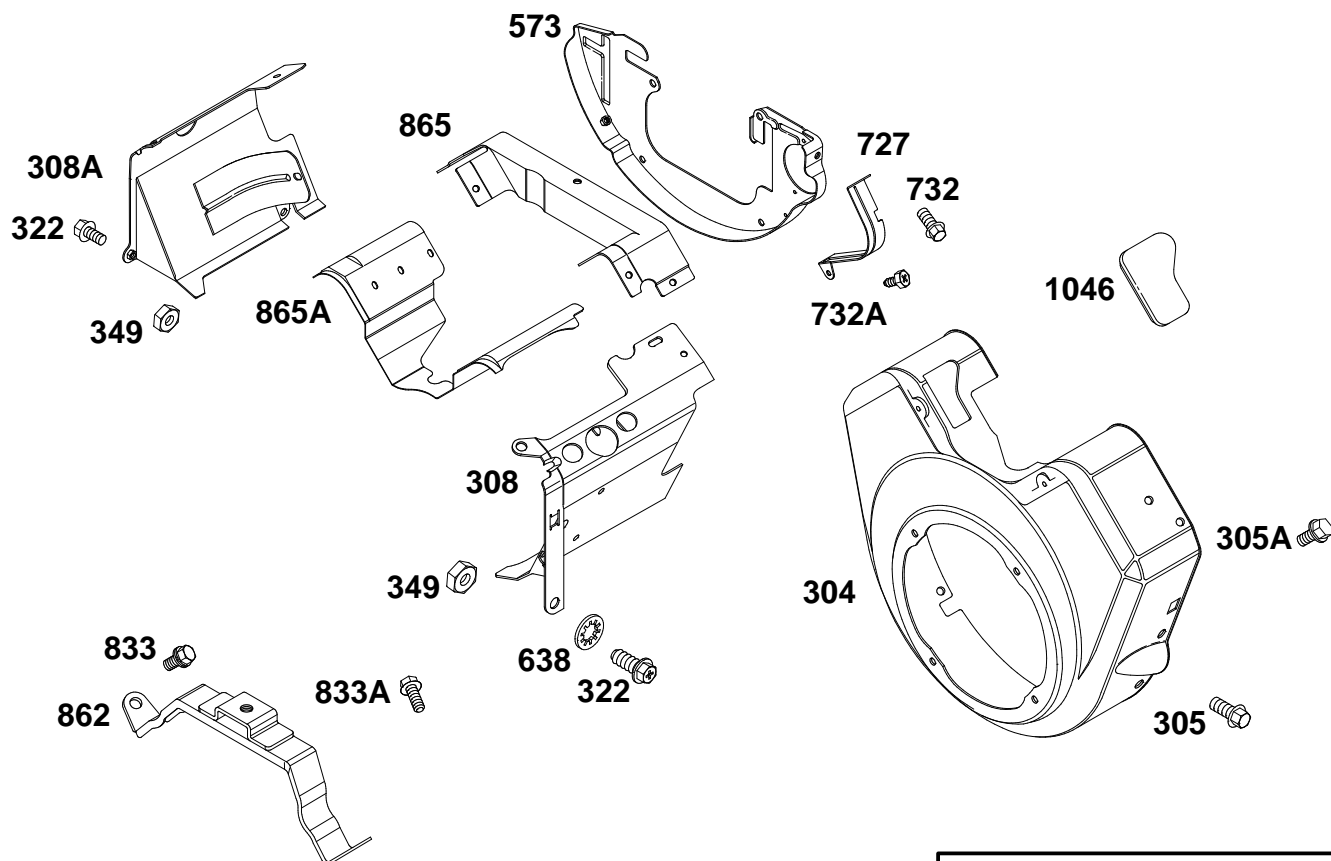
Assemblies include all parts shown in frames.

ENGINE BRIGGS & STRATTON MODEL 350447-1116-E1

Ref. No.	Part No.	Description	No. Used
15	805059	Plug—Oil	1
87	805054	Seal—Governor Shaft	1
187	398367	Line—Fuel (Molded)	1
★273	805058	Seal—O Ring	1
287	805247	Screw (Oil Fill Tube)	1
385	693169	Screw (Fuel Pump)	1
387	808656	Pump—Fuel	1
430	805030	Screw (Oil Pump)	1
★468	805316	Seal—O Ring	1
479	805317	Screw (Oil Pump Screen)	1
523	693175	Dipstick	1
524	693172	Seal—Fill Tube	1
525	693174	Tube—Oil Fill	1
552	805412	Bushing—Governor Crank	1
552A	805413	Bushing—Governor Crank	1

Ref. No.	Part No.	Description	No. Used
565	805073	Stud (Oil Filter)	1
596	805057	Screw (Oil Pump)	1
601	93807	Clamp—Hose	1
615	806096	Retainer—Governor Shaft	1
616	807596	Crank—Governor	1
628	805025	Screw (Pump Bracket)	1
657	805406	Screw (Oil Deflector)	1
788	807685	Bracket—Pump	1
816	805449	Washer—Lock (Oil Filter)	1
★988	805250	Gasket—Oil Adapter	1
965	805654	Deflector—Oil	1
1017	807598	Screen—Oil Pump	1
1024	807644	Pump—Oil	1
1027	492932	Filter—Oil	1

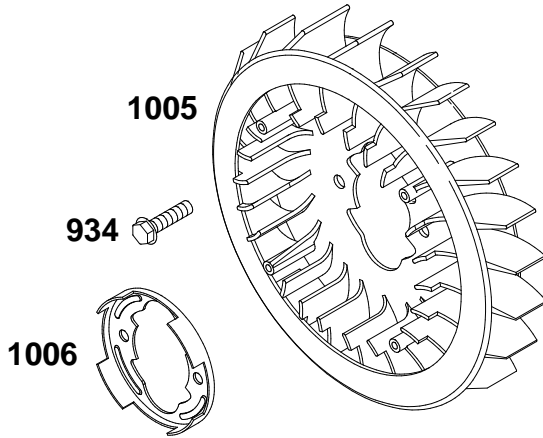
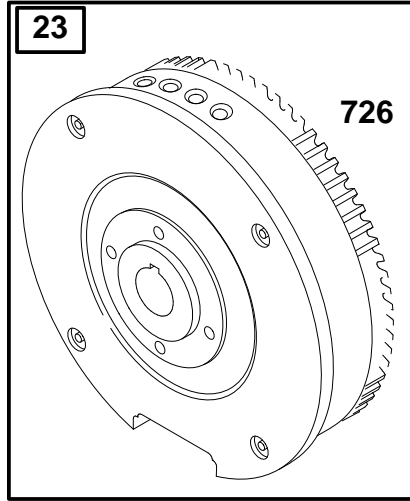
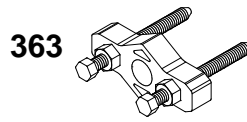
★ Included in Gasket Set—Part No. 808389


1036 LABEL KIT-EMISSION

Assemblies include all parts shown in frames.

ENGINE BRIGGS & STRATTON MODEL 350447-1116-E1

Ref. No.	Part No.	Description	No. Used	Ref. No.	Part No.	Description	No. Used
304	690929	Housing-Blower	1	732	805406	Screw (Starter Drive Cover)	1
305	805406	Screw (Blower Housing)	1	732A	805260	Screw-Phillips Hex. (Starter Drive Cover)	1
305A	805025	Screw-Hex. (Blower Housing)	1	833	805406	Screw-Hex. (Cleaner Mounting Strap)	1
308	807870	Cover-Cylinder (Cyl. #1, Black)	1	833A	805902	Screw-Hex. (Cleaner Mounting Strap)	1
308A	808100	Cover-Cylinder (Cyl. #2, Black)	1	862	807796	Strap-Cleaner Mounting	1
322	805406	Screw-Hex.	1	865	807661	Cover-Air Guide (Black)	1
349	805383	Nut	1	865A	805738	Cover-Air Guide	1
573	807663	Plate-Back	1	1036	499370	Label Kit-Emission	1
638	806101	Washer-Lock	1	1046	805753	Plug-Blower Housing	1
727	805505	Cover-Starter Drive	1				

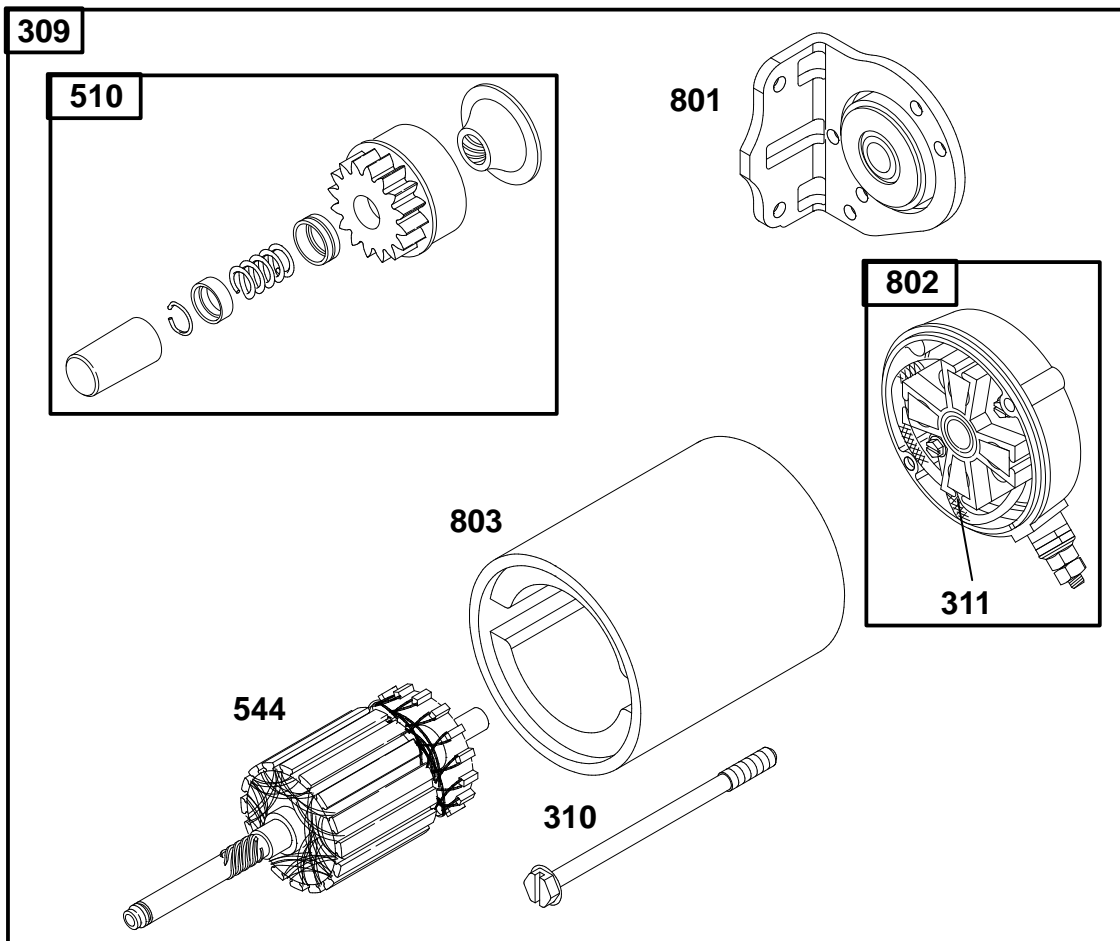


Assemblies include all parts shown in frames.

ENGINE BRIGGS & STRATTON MODEL 350447-1116-E1

Ref. No.	Part No.	Description	No. Used
23	808129	Flywheel	1
332	806028	Nut-Flywheel	1
363	19203	Flywheel Puller	1
726	808162	Gear-Ring	1

Ref. No.	Part No.	Description	No. Used
934	94627	Screw (Flywheel Fan)	1
1005	808082	Fan-Flywheel	1
1006	224413	Retainer-Fan	1

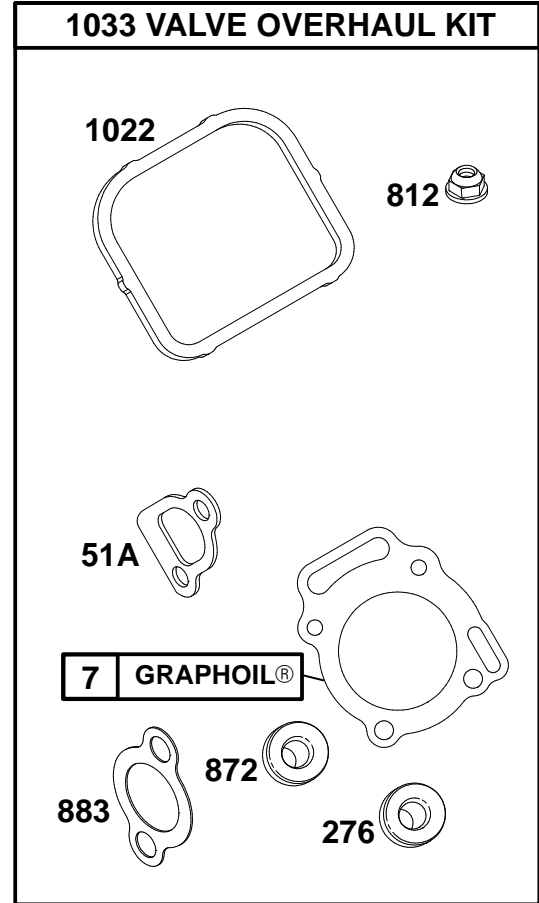
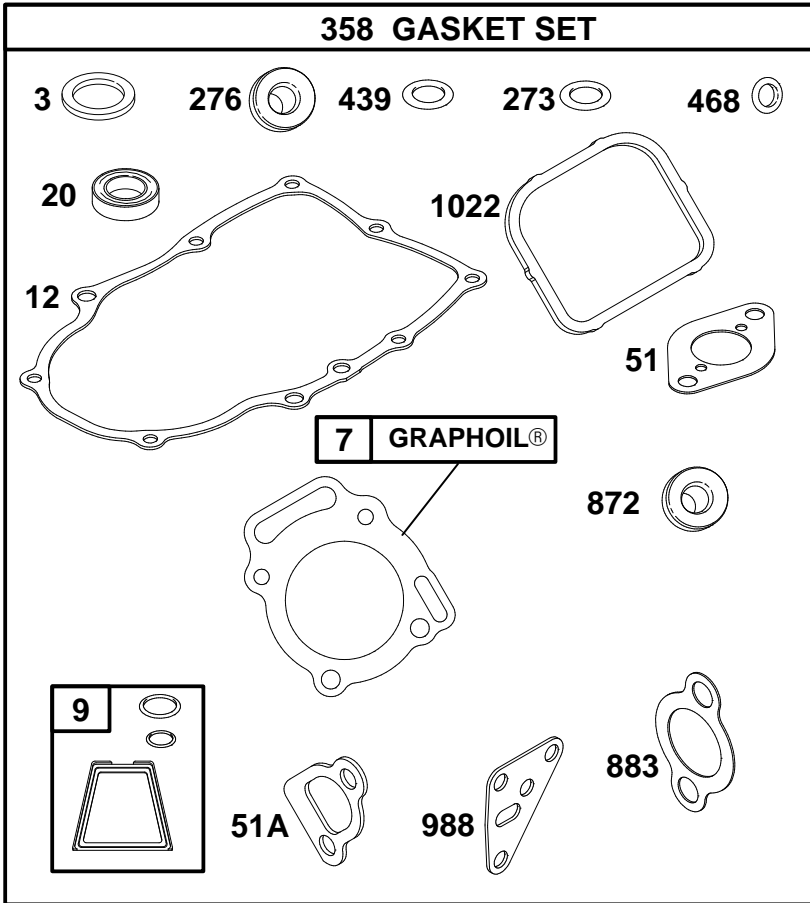


Assemblies include all parts shown in frames.

ENGINE BRIGGS & STRATTON MODEL 350447-1116-E1

Ref. No.	Part No.	Description	No. Used
309	808106	Motor—Starter (Steel Pinion)	1
310	496880	Screw (Starter Housing)	1
311	496887	Brush Set	1
510	496881	Drive—Starter	1

Ref. No.	Part No.	Description	No. Used
544	496816	Armature—Starter	1
697	805247	Screw (Starter Motor)	1
801	496814	Cap—Drive	1
802	496813	Cap—End	1
803	496815	Housing—Starter	1



Assemblies include all parts shown in frames.

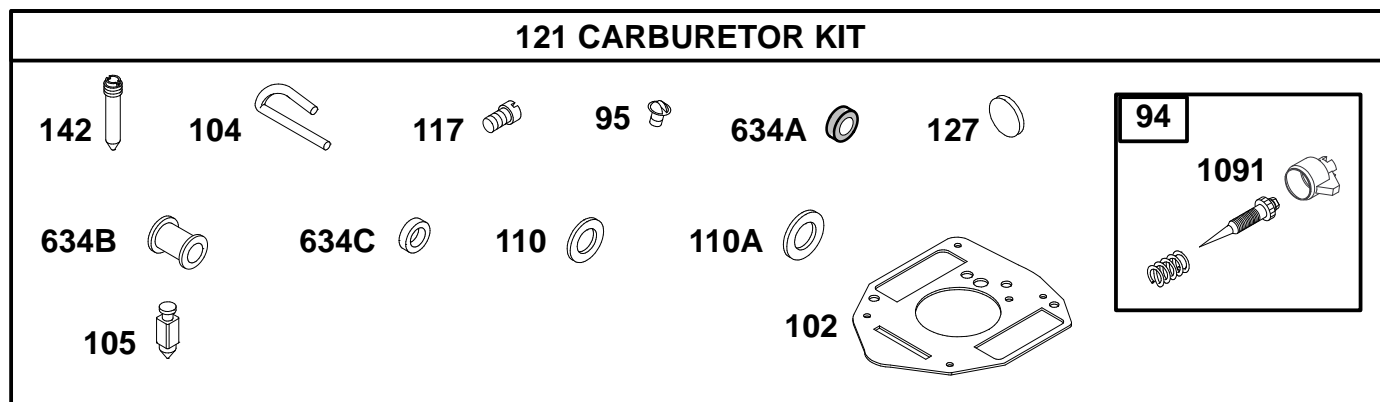
ENGINE BRIGGS & STRATTON MODEL 350447-1116-E1

Ref. No.	Part No.	Description	No. Used
★3	805101	Seal-Oil	1
★△7	806086	Gasket-Cylinder Head	1
★9	807688	Gasket-Breather	1
★12	806190	Gasket-Crankcase	1
★20	805049	Seal-Oil	1
★51	805700	Gasket-Intake	1
★△51A	805023	Gasket-Intake	1
★273	805058	Seal-O Ring	1
★△276	805420	Washer	1

Ref. No.	Part No.	Description	No. Used
358	808389	Gasket Set	1
★439	806191	Seal-O-Ring	1
★468	805316	Seal-O Ring	1
△812	805019	Nut-Lock	1
★△872	805420	Washer	1
★△883	805024	Gasket-Exhaust	1
★988	805250	Gasket-Oil Adapter	1
★△1022	806039	Gasket-Rocker Cover	1
1033	808391	Kit-Valve Overhaul	1

★ Included in Gasket Set-Part No. 808389

△ Included in Valve Overhaul Kit-Part No. 808391



Assemblies include all parts shown in frames.

ENGINE BRIGGS & STRATTON MODEL 350447-1116-E1

Ref. No.	Part No.	Description	No. Used
●94	808399	Valve-Idle Adjustment	1
●95	805538	Screw-Round Head	1
●102	805541	Gasket-Carburetor Body	1
●104	805545	Pin-Float Hinge	1
●105	805547	Valve-Needle	1
●110	805549	Washer-Seal	1
●110A	806137	Washer	1
●117	806126	Jet-Main	1

Ref. No.	Part No.	Description	No. Used
121	808395	Carburetor Kit	1
●127	805559	Plug-Welch	1
●142	806128	Nozzle-Carburetor	1
●634A	805544	Seal-Shaft	1
●634B	805543	Collar-Choke Shaft	1
●634C	806131	Seal-Shaft	1
●1091	805862	Cap-Limiter	1

● Included in Carburetor Kit-Part No. 808395

TORO PART NUMBER INDEX

Part No.	Description	Pg. No.	Ref. No.	Qty.	Part No.	Description	Pg. No.	Ref. No.	Qty.
116973	Tire-Turf (Optional)	21	*	2	69-8930	Washer	18	18	4
116973	Tire-Turf (Optional)	4	*	2	69-8960	Spacer	18	17	2
3-6498	Washer-Thrust	13	5	1	69-9760	Plate-Cover	4	15	1
10-6830	Stud-Drive	4	3	4	70-2770	Head	25	10	1
10-6850	Drum-Brake	21	34	2	70-2780	Piston	25	5	1
18-6320	Washer-Steering	4	19	3	70-9840	Shoe-Brake	21	32	4
18-6380	Bolt-Adjustment	6	17	2	70-9850	Retainer	21	29	2
18-6380	Pin-Adjusting	13	9	1	70-9860	Shaft-Cam	21	30	2
22-8330	Plug	19	1	2	70-9870	Plate-Brake Backing	21	33	2
22-8340	Spring	19	3	2	70-9880	Spring-Extension	21	31	4
22-8350	Ball	19	4	2	71-1500	Asm-Brake	21	*	2
22-8360	Pin-Cam	19	6	2	72-4790	Hold-Down-Battery	10	12	1
22-8370	Seat-Check Valve	19	5	2	74-0720	Tube-Manual	7	4	1
22-8380	Retainer-Spring	19	10	1	74-9100	Pad-Forward	12	16	1
22-8390	Spring Retainer	19	12	1	74-9110	Pad-Reverse	12	4	1
22-8400	Spacer-Float	19	13	1	75-0540	Teather	17	2	1
22-8410	Spring	19	11	1	75-4705	Hose-Fuel	11	47	1
22-8420	Spool	19	8	1	75-5470	Spacer	13	18	1
22-8480	Spring-Ring Spool	19	14	1	75-6820	Hourmeter	3	18	1
22-8490	Ring-Retaining	19	15	1	76-0810	Asm-Housing	22	*	1
22-8500	O-Ring	19	9	2	76-0810	Asm-Housing	23	*	1
23-9740	Element-Hydraulic Filter	17	18	1	76-0810	Asm-Housing	5	*	1
25-2380	Plate-Thrust	16	50	1	76-0840	Manifold	22	22	1
25-2400	Gasket-Cap, End	15	14	1	76-0850	Bearing-Thrust	22	12	1
25-2430	Pin	15	13	1	76-0850	Bearing-Thrust	23	12	1
25-2450	Swashplate	16	48	1	76-0850	Bearing-Thrust	5	12	1
25-2460	Plug	15	29	2	76-0860	Shaft-Coupling	22	11	1
25-2470	Kit-Shim	15	30	2	76-0860	Shaft-Coupling	23	11	1
25-2480	Spring	15	42	1	76-0860	Shaft-Coupling	5	11	1
25-2490	Ball	15	4	2	76-0870	Plate-Wear	22	18	1
25-2500	Shaft-Trunnion	15	27	1	76-0870	Plate-Wear	23	18	1
25-2510	Washer	15	26	2	76-0870	Plate-Wear	5	18	1
25-2570	Spring	15	31	1	76-0880	Asm-Commutator	22	*	1
25-2600	Kit-Cylinder Block	15	16	1	76-0880	Asm-Commutator	23	*	1
25-2640	Spring	15	3	2	76-0880	Asm-Commutator	5	*	1
25-2650	Plug	15	1	2	76-0890	Asm-Cover End	23	29	1
25-2690	Housing-Pump, Charge	15	35	1	76-0940	Asm-Cover, End	22	24	1
25-3180	Kit-Valve, Check	16	*	1	76-0940	Asm-Cover, End	5	24	1
25-3210	Seal-Lip	15	25	2	76-1420	Wheel-Steering	6	1	1
26-3790	Nut-Lock	4	5	1	76-8640	Stud-Traction	13	14	1
26-3790	Nut-Lock	21	19	2	80-2110	Cable-Solenoid-Starter	9	2	1
27-2320	Bearing-Side Flange	8	7	2	80-8650	Coupler-Rubber	14	14	2
27-6600	Spacer-Coupler	14	13	8	83-0020	Starter Switch	3	1	1
28-4210	Solenoid-Starter	1	25	1	83-1031	Mount-Engine	11	31	4
29-6163	Switch-Neutral	13	20	1	83-1390	Fitting-Fuel Shut-Off	10	18	1
38-3400	Guard-Rubber	11	18	1	83-2220	Deflector-Exhaust	11	13	1
38-3400	Snubber	4	42	2	83-2230	Screw	11	12	4
43-1710	Asm-Valve	18	11	1	83-2240	Arrester-Spark	11	*	1
43-5220	Ring-Retaining	25	12	1	83-2420	Cable-Positive	9	3	1
43-5230	Shaft with Clevis	25	13	1	83-2420	Cable-Positive	11	25	1
43-5260	Barrel w/Clevis & Ports	25	2	1	83-7000	Asm-Cylinder	24	2	1
46-7510	Hood-Air Inlet	3	10	1	83-7250	Kit-Seal Repair	25	14	1
46-8400	Bearing-Roller	16	51	1	83-7260	Cone-Charge Relief	15	32	2
47-2964	Hose-Fuel	11	19	1	83-9310	Arm-Brake	8	10	2
47-2964	Hose-Fuel	10	31	1	83-9310	Lever-Brake	21	6	2
49-2040	Screw-HFH	13	6	3	84-2000	Bracket-Brake	21	38	2
49-8510	Kit-Relief, Charge	16	*	1	85-0290	Spacer-Seat Support	1	4	2
49-8520	Kit-Implement Relief	16	*	1	85-6540	Stud-Drive	21	17	8
51-0780	Slider-Seat 4	7	16	1	85-8030	Chain	6	19	1
51-0790	Slider-Seat	7	19	1	85-8290	Tire	21	15	2
53-6380	Washer	24	12	1	85-8290	Tire	4	29	1
56-7720	Rod-Battery Hold-Down	10	16	2	85-8300	Lever-Pump	13	2	1
56-7976	Clamp-Tube	4	14	2	85-8360	Seal-Cover	11	3	1
56-7981	Sleeve-Protective	24	10	1	85-8430	Base-Air Cleaner	11	48	1
57-5420	Screw-Shoulder	17	41	1	85-8450	Rod-Control	12	9	1
63-8360	Key-Ignition	3	2	2	85-8460	Asm-Switch Arm	13	12	1
63-8410	Washer-Flat	17	20	3	85-8490	Panel-RH	2	41	1
63-8410	Washer-Flat	7	20	4	85-8570	Shroud-Lower	17	24	1
63-8410	Washer-Flat	10	23	4	85-8600	Support-Engine	11	33	1
65-8770	Bushing-Flange	6	22	2	85-8640	Base-Engine	11	38	1
66-0120	Knob	3	15	2	85-8670	Hub-Fan	14	27	1
67-8050	Bearing-Needle	15	37	1	85-8700	Hub-Pump	14	19	1
67-8060	Seal-Lip	15	36	1	85-8730	Hub-Engine	14	18	1
67-9410	Washer-Flat	8	14	2	85-8770	Coupling	14	16	1
68-8990	Asm-Hydraulic Filter Head	17	15	1	85-8780	Tread-Floor RH	2	37	1

*Not Illustrated

TORO PART NUMBER INDEX (Cont.)

3322-295

Part No.	Description	Pg. No.	Ref. No.	Qty.	Part No.	Description	Pg. No.	Ref. No.	Qty.
85-8790	Tread-Floor LH	2	38	1	93-9052	Decal-Danger	2	36	3
85-8930	Retainer-Boot	10	4	1	93-9053	Decal-Warning	2	48	1
85-8940	Asm-Flangette	4	27	1	93-9081	Decal-Blank	26	5	1
85-8950	Flangette	4	25	1	94-1414	Valve-Air Cleaner	3	24	1
85-8960	Spacer	12	3	1	94-2690	Filter-Fuel	10	9	1
85-9010	Boot-Steering	10	3	1	94-3652	Asm-Cover	3	22	1
85-9020	Key-Square	14	17	1	94-4513	Ring-Retaining	6	8	1
85-9030	Spring-Extension	13	10	1	94-4514	Pin-Tilt Lock	6	6	1
85-9120	Spacer	6	11	3	94-4519	Cover-Cable	11	22	1
85-9120	Spacer	13	17	1	94-6116	Rim	21	27	2
85-9150	Plate-Switch	13	19	1	94-6116	Rim	4	38	1
85-9160	Spacer	24	1	1	94-8178	Kit-Seal	22	*	1
85-9170	Pin-Cylinder	24	4	1	94-8178	Kit-Seal	23	*	1
85-9180	Sprocket	6	21	1	94-8178	Kit-Seal	5	*	1
85-9200	Joint-Universal	6	25	1	95-0553	Plate-Pump	13	7	1
85-9220	Shaft-Steering Upper	6	28	1	95-0629	Fitting-Hydraulic 90°	14	32	1
85-9450	Hose-Hydraulic	14	35	1	95-0632	Cover	11	53	1
85-9460	Cooler-Oil	17	30	1	95-0645	Plate-Hot Surface	11	10	1
85-9510	Screen-Filler	17	4	1	95-5806	Band-Mounting	3	8	1
85-9550	Clamp-Rubber	17	35	2	95-5808	Cap-End	15	7	1
85-9560	Fan	14	28	1	95-5809	Ball Bearing	15	20	1
85-9570	Hose-Hydraulic	24	14	1	95-5810	Shaft	16	47	1
85-9570	Hose-Hydraulic	18	33	1	95-5812	Asm-Gerotor	15	39	1
85-9580	Hose-Hydraulic	24	5	1	95-5813	Ring-Retaining	15	21	1
85-9580	Hose-Hydraulic	18	32	1	95-5815	Spring-Valve, Acceleration	15	8	1
85-9590	Hose-Hydraulic	14	25	1	95-5816	Plug	15	11	2
85-9590	Hose-Hydraulic	17	28	1	95-5823	Bracket-Lever	8	2	1
85-9610	Hose-Hydraulic	14	1	2	95-5824	Rod-Adjustment	21	39	2
85-9640	Hose-Hydraulic	4	12	2	95-5827	Asm-Muffler Shield	11	11	1
85-9660	Plate-Seat Adjust	7	5	1	95-5842	Asm-Hydraulic Pump	14	8	1
85-9670	Nut-T	17	34	2	95-5844	Strap	8	19	2
85-9680	Panel-LH	2	40	1	95-5848	Rod-Traverse	8	16	1
87-2710	Asm-Lever	8	22	1	95-9720	Fitting-Hydraulic Orificed	18	8	1
87-4710	Spacer-Parking Brake	8	24	1	97-3055	Asm-Hydraulic Motor	21	8	1
88-8110	Asm-Screen, R.H.	17	33	1	98-0900	Bracket-Bearing LH	8	11	1
88-8120	Asm-Screen, L.H.	17	31	1	98-0901	Bracket-Bearing RH	8	12	1
88-8160	Plate-Valve	15	15	1	98-0902	Panel-Rear RH	2	42	1
88-8170	Asm-Housing, Variable	15	45	1	98-0917	Rod-Seat	1	26	1
88-8180	Shaft-Trunnion	15	43	1	98-0918	Fender-RH	1	7	1
88-8190	Bearing-Journal	15	24	1	98-0920	Valve-Acceleration	15	9	2
88-8210	Plug	15	33	2	98-0922	Bracket-Hourmeter	8	25	1
88-8230	Seal-Lip	16	53	1	98-0924	Guide-Chain	6	33	1
88-8280	Lever-Steering Adjust	6	5	1	98-0925	Bracket-Chain	6	34	1
88-8290	Asm-Steering Column	6	26	1	98-0926	Strap	4	32	1
88-8330	Cable-Engine Ground	9	4	1	98-0927	Tank-Fuel	10	1	1
88-8330	Cable-Negative	11	21	1	98-0928	Shaft-Steering Lower	6	23	1
88-8350	Tab-Bearing	4	31	1	98-0929	Plate-Chain Stay	6	38	1
88-8480	Bracket-Pivot	18	6	1	98-0930	Asm-Engine	11	46	1
88-8510	Dowel	6	30	2	98-0932	Asm-Hydraulic Tube	4	10	1
88-8520	Block-Lock Lower	6	31	1	98-0932	Tube-Hydraulic	18	39	1
88-8530	Block-Lock Upper	6	7	1	98-0933	Asm-Hydraulic Tube	14	3	1
92-1678	Battery	10	15	1	98-0933	Asm-Hydraulic Tube	4	13	1
92-1715	Spacer	21	37	8	98-0934	Asm-Hydraulic Tube	21	9	1
92-2343	Asm-Pedal	12	15	1	98-0934	Tube-Hydraulic	18	41	1
92-2344	Trunnion	12	11	1	98-0935	Asm-Hydraulic Tube	21	10	1
92-8776	Plug	15	5	2	98-0935	Tube-Hydraulic	18	40	1
92-8777	O-Ring	15	6	2	98-0936	Asm-Hydraulic Tube	21	23	1
92-8959	Reservoir-Hydraulic	17	40	1	98-0936	Tube-Hydraulic	18	38	1
92-8969	Spindle	4	24	1	98-0937	Asm-Hydraulic Tube	21	22	1
92-8976	Seat	7	21	1	98-0937	Tube-Hydraulic	18	37	1
92-8977	Hose-Air Cleaner	3	12	1	98-0938	Asm-Hydraulic Tube	14	5	1
93-2190	Asm-Air Cleaner	3	9	1	98-0938	Tube-Hydraulic	18	36	1
93-2195	Element-Air Cleaner	3	23	1	98-0950	Asm-Fork	4	7	1
93-4365	Asm-Reservoir Cap	17	3	1	98-0953	Cover-Air Cleaner	11	2	1
93-6668	Decal-Battery	10	25	1	98-0958	Asm-Hydraulic Motor	4	1	1
93-6838	Hub-Wheel	4	4	1	98-0959	Asm-Hydraulic Motor	21	12	1
93-6838	Hub-Wheel	21	16	2	98-0960	Muffler	11	14	1
93-6850	Lever-Brake	21	40	2	98-0962	Asm-Frame	2	34	1
93-7170	Cap-Fuel	10	2	1	98-0963	Bracket-Bulkhead	18	13	1
93-7252	Decal-CE	1	16	1	98-0965	Asm-Top Panel	2	44	1
93-7272	Decal-Caution	17	38	2	98-0966	Asm-Panel-Rear LH	1	29	1
93-7276	Decal-Danger	10	26	1	98-0969	Hose-Hydraulic	17	17	1
93-7442	Decal-Parking Lever	3	19	1	98-0969	Hose-Hydraulic	14	30	1
93-9050	Decal-Instruction	2	43	1	98-0970	Hose-Hydraulic	17	11	1
93-9051	Decal-Eccentric Bolt	13	22	1	98-0971	Fitting-Hydraulic 90°	17	10	1

*Not Illustrated

TORO PART NUMBER INDEX (Cont.)

Part No.	Description	Pg. No.	Ref. No.	Qty.	Part No.	Description	Pg. No.	Ref. No.	Qty.
98-0972	Decal-Sand Pro 5020	1	20	2	240-11	Grommet	17	19	3
98-0973	Pin-Grooved	6	20	1	240-11	Grommet	10	22	4
98-0975	Decal-Controls	3	16	1	242-50	Nut-Lug	21	18	8
98-0976	Hose-Fuel	10	7	1	242-50	Nut-Lug	4	23	4
98-0977	Decal-Service	7	8	1	2410-73	Retainer-Teather	17	1	1
98-0978	Spacer	6	15	2	2412-36	Clamp-Hose	17	12	1
98-0979	Pin-Lynch	7	11	1	2412-36	Clamp-Hose	10	19	2
98-0980	Strip-Seat Base	1	10	1	2412-93	Clamp-R	10	5	1
98-0981	Pad-Seat Base	1	12	1	2412-98	Clamp-Hose	10	8	3
98-0982	Strip-Fender	1	13	1	2412-98	Clamp-Hose	11	17	1
98-0983	Bracket-Fuel Tank	6	14	1	2412-109	Clip-J	10	20	1
98-0984	Decal-Lift	3	17	1	2412-129	Clamp-Hose	17	7	3
98-0987	Tube-Hydraulic	18	31	1	2412-129	Clamp-Hose	14	31	2
98-0987	Tube-Hydraulic	17	37	1	2412-130	Clamp-Hose	3	11	2
98-0988	Asm-Hydraulic Tube	21	14	1	2412-133	Clamp-R	7	1	2
98-0988	Tube-Hydraulic	18	35	1	2412-138	Clamp-R	18	23	2
98-0989	Hose-Hydraulic	14	21	1	251-307	Bearing	13	16	2
98-0989	Hose-Hydraulic	18	34	1	251-352	Asm-Bearing	4	26	1
98-0991	Control-Choke/Throttle	3	7	2	252-82	Bearing-Needle	15	44	1
98-0994	Harness-Wire	24	20	1	254-61	Bearing-Cup	4	21	2
98-0994	Harness-Wire	18	43	1	254-70	Bearing-Cone	4	20	2
98-0994	Wire Harness-Main	9	1	1	256-113	Bushing-Flange	13	11	2
98-0994	Wire Harness-Main	10	33	1	256-185	Bushing-Sleeve	6	27	1
98-0995	Hose-Fuel	10	21	1	256-219	Bushing-Flange	12	2	2
98-0997	Fender-RH	26	1	1	2710-11	Link-Connecting	6	18	2
98-0998	Fender-LH	26	6	1	2710-20	Link-Offset	18	12	1
98-0999	Wire-Ground	11	26	1	282-2	Clevis-Adjustment	21	42	2
98-0999	Wire-Ground	10	34	1	283-1	Pin-Clevis	21	43	2
98-8065	Decal-Infield Pro 5020	2	53	2	283-62	Pin-Clevis	8	18	1
98-8150	Seat Base	1	30	1	285-17	Plug	3	25	1
98-8151	Asm-Cooler Mount	17	25	1	285-17	Plug-Pipe	15	23	2
98-8159	Pivot-Welded	18	21	1	302-5	Fitting-Grease	4	36	1
98-8160	Latch-Valve Lever	1	8	1	302-33	Fitting-Grease	6	32	1
99-1629	Guide-Lever	1	3	1	302-33	Fitting-Grease	4	34	1
99-1632	Lever-Lift	18	20	1	302-60	Fitting-Grease	13	13	1
218-461	Nut-Hex.	3	21	1	321-3	Screw-HH	10	14	2
232-32	Valve-Stem	4	37	1	321-3	Screw-HH	1	28	2
232-35	Valve-Stem	21	28	2	321-4	Screw-HH	17	14	6
233-39	Handle	6	4	1	321-4	Screw-HH	21	35	8
233-39	Knob-Lever	18	5	1	321-9	Screw-HH	8	23	1
237-21	O-Ring	24	15	2	321-10	Screw-HH	4	16	1
237-21	O-Ring	18	29	2	321-23	Screw-HH	18	7	4
237-22	O-Ring	21	4	1	322-2	Screw-HH	7	3	6
237-22	O-Ring	14	24	2	322-2	Screw-HH	17	22	2
237-22	O-Ring	18	26	3	322-2	Screw-HH	2	49	1
237-22	O-Ring	17	29	2	322-3	Screw-HH	26	2	4
237-30	O-Ring	21	1	4	322-3	Screw-HH	6	13	4
237-30	O-Ring	14	2	4	322-3	Screw-HH	17	42	2
237-30	O-Ring	15	12	2	322-4	Screw-HH	14	15	8
237-30	O-Ring	18	30	6	322-4	Screw-HH	11	29	8
237-30	O-Ring	4	39	4	322-4	Screw-HH	15	38	4
237-42	O-Ring	19	2	2	322-5	Screw-HH	6	10	3
237-42	O-Ring	21	3	1	322-5	Screw-HH	3	14	2
237-42	O-Ring	14	22	2	322-8	Screw-HH	13	15	1
237-42	O-Ring	18	27	2	322-8	Screw-HH	11	55	2
237-78	O-Ring	25	1	2	322-10	Screw-HH	11	36	2
237-78	O-Ring	24	16	2	322-11	Screw-HH	8	20	2
237-78	O-Ring	18	28	2	322-14	Screw-HH	12	1	1
237-79	O-Ring	17	5	4	322-43	Screw-HH	6	3	1
237-79	O-Ring	14	7	3	323-5	Screw-HH	17	21	3
237-79	O-Ring	15	10	3	323-5	Screw-HH	10	24	4
237-80	O-Ring	21	2	4	323-5	Screw-HH	11	34	4
237-80	O-Ring	14	33	1	323-9	Screw-HH	1	5	2
237-80	O-Ring	15	34	2	323-10	Screw-HH	13	1	1
237-80	O-Ring	4	40	2	323-10	Screw-HH	11	35	2
237-86	O-Ring	15	2	4	323-11	Screw-HH	24	3	1
237-95	O-Ring	15	40	1	323-11	Screw-HH	11	37	2
237-124	Grommet	10	27	1	323-29	Screw-HH	4	28	3
237-143	Grommet	10	17	2	323-34	Screw-HH	24	11	1
237-146	O-Ring	17	8	3	323-45	Screw-HH	16	55	4
237-164	Grommet-Rubber	3	13	1	325-5	Screw-HH	24	22	4
238-14	Pin-Clevis	8	5	1	325-11	Screw-HH	6	35	2
240-2	Grommet	26	3	1	325-13	Screw-HH	21	20	8
240-3	Grommet-Rubber	1	1	1	3210-2	Screw-HH	11	54	2
240-5	Grommet	18	19	2	3217-5	Nut-Hex.	10	13	2

*Not Illustrated

TORO PART NUMBER INDEX (Cont.)

3322-295

Part No.	Description	Pg. No.	Ref. No.	Qty.	Part No.	Description	Pg. No.	Ref. No.	Qty.
3218-2	Nut-Jam	7	18	2	3296-23	Nut-Lock	4	2	2
3218-5	Nut-Jam	12	10	1	3296-23	Nut-Lock	14	10	2
3218-13	Nut-Jam	1	22	2	3296-23	Nut-Lock	12	12	1
3219-14	Nut-Hex	1	21	2	3296-25	Nut-Lock	6	36	2
3220-2	Nut-Jam	21	41	2	3296-29	Nut-Hex.	14	12	8
3230-20	Bolt-CARR	1	6	2	3296-29	Nut-Lock	13	4	2
3234-1	Screw-HFH	8	8	4	3296-29	Nut-Lock	26	4	4
3234-4	Screw-HFH.	1	15	2	3296-29	Nut-Lock	3	4	2
3234-7	Screw	2	39	5	3296-29	Nut-Lock	8	4	2
3234-29	Screw-HFH	2	47	2	3296-29	Nut-Lock	12	6	1
3241-5	Screw-Set, Sq. Hd.	14	11	6	3296-29	Nut-Lock	1	9	3
3253-3	Washer-Lock	17	13	2	3296-29	Nut-Lock	6	12	6
3253-3	Washer-Lock	18	24	1	3296-29	Nut-Lock	7	12	10
3253-4	Washer-Lock	7	2	2	3296-29	Nut-Lock	11	20	4
3253-4	Washer-Lock	6	37	2	3296-29	Nut-Lock	17	23	4
3253-7	Washer-Lock	21	21	8	3296-29	Nut-Lock	11	32	8
3254-1	Washer-Lock	1	24	2	3296-39	Nut-Lock	8	6	4
3254-2	Washer-ITLW	11	24	1	3296-39	Nut-Lock	12	14	1
3254-2	Washer-Lock	1	23	2	3296-39	Nut-Lock	24	17	1
3254-2	Washer-Lock	10	35	1	3296-39	Nut-Lock	1	19	2
3254-5	Washer-Lock	3	20	1	3296-39	Nut-Lock	4	22	3
3255-7	Washer-ETLW	11	8	3	3296-39	Nut-Lock	13	23	1
3256-1	Washer-Flat	7	7	4	3296-39	Nut-Lock	11	28	4
3256-2	Washer-Flat	1	17	1	3296-42	Nut-Lock	8	3	1
3256-22	Washer-Flat	10	11	2	3296-42	Nut-Lock	7	25	4
3256-23	Washer-Flat	12	5	1	3296-42	Nut-Lock	1	27	2
3256-23	Washer-Flat	3	5	2	3296-42	Nut-Lock	21	36	8
3256-23	Washer-Flat	6	9	3	32103-12	Nut-Wing	10	10	2
3256-23	Washer-Flat	8	21	2	32104-6	Screw-HH	4	33	2
3256-23	Washer-Flat	7	32	1	32105-13	Screw-HH	3	3	4
3256-24	Washer-Flat	1	11	4	32105-21	Screw-Machine	13	3	2
3256-24	Washer-Flat	12	13	2	32115-15	Retainer	2	51	1
3256-24	Washer-Flat	11	30	8	32120-11	Ring-Retaining	15	46	1
3256-26	Washer-Flat	12	8	1	32121-6	Pin-Roll	8	9	2
3256-26	Washer-Flat	24	21	4	32121-15	Pin-Roll	6	24	2
3257-32	Key-Woodruff	14	9	2	32121-73	Pin-Spring	18	22	1
3257-32	Key-Woodruff	15	19	2	32121-91	Pin-Spring	16	49	4
3257-42	Key-Woodruff	21	5	1	32121-111	Pin-Roll	6	2	1
3257-42	Key-Woodruff	22	17	1	32128-20	Nut-Flange Lock	1	14	1
3257-42	Key-Woodruff	23	17	1	32136-9	Nut-Hex.	4	18	1
3257-42	Key-Woodruff	5	17	1	32141-36	Level-Screw	7	17	2
3258-166	Screw-Round Hd.	7	6	4	32144-11	Screw-HWHTF	1	2	8
3269-32	Rivet-Pop	11	9	2	32144-11	Screw-HWHTF	18	14	4
3272-4	Pin-Cotter	1	18	2	32144-11	Screw-HWHTF	17	26	3
3272-6	Pin-Cotter	21	44	2	32144-11	Screw-TAP	10	6	3
3272-10	Pin-Cotter	8	17	2	32144-14	Screw-HWH	8	13	4
3272-10	Pin-Cotter	21	45	2	32144-18	Screw-HH	3	26	2
3272-12	Pin-Cotter	8	15	2	32144-73	Screw-HH	14	29	4
3272-16	Pin-Cotter	12	7	1	32148-6	Nut-Clinch	17	32	4
3272-37	Pin-Cotter	4	17	1	32148-8	Nut-Clinch	1	33	2
3274-5	Screw-HSH	14	20	2	32148-11	Nut-Clinch	2	35	1
3274-12	Screw-HSH	7	33	4	32151-46	Ring-Retaining	15	28	2
3274-31	Screw-HH	10	30	1	32152-10	Nut	25	3	1
3274-56	Screw-HSH	2	50	1	3334-945	Tie-Cable	24	9	1
3274-86	Screw-HSH	17	27	2	33113-008	Screw-HH	11	7	3
3274-93	Screw-HSH	4	6	2	340-2	Fitting-Hydraulic Straight	21	13	1
3289-24	Screw-HSFH	6	29	1	340-6	Fitting-Hydraulic Straight	21	11	4
3290-199	Speed Nut	2	52	1	340-18	Fitting-Hydraulic 90°	17	36	2
3290-256	Pin-Hair	24	18	2	340-77	Fitting-Hydraulic 90°	18	2	1
3290-360	Screw-HH	18	3	2	340-77	Fitting-Hydraulic 90°	14	23	2
3290-378	Tie-Cable	11	23	2	340-86	Fitting-Hydraulic Tee	18	10	1
3290-378	Tie-Cable	10	29	1	340-89	Fitting-Hydraulic 45°	4	30	2
3290-378	Tie-Cable	18	42	1	340-92	Fitting-Hydraulic Straight	18	9	1
3290-379	Tie-Wire	24	19	1	340-98	Fitting-Hydraulic 90°	14	6	2
3290-477	Washer-Curved	8	1	1	340-121	Fitting-Hydraulic Tee	18	15	2
3290-477	Washer-Curved	18	25	1	340-127	Nut-Bulkhead	18	16	2
3290-496	Nut-Panel	2	46	4	340-142	Fitting-Hydraulic 90°	24	13	2
3290-509	Tie-Mount	10	28	1	353-550	Plug-Hydraulic	17	39	1
3296-2	Nut-Lock	18	4	2	353-987	Fitting-Hydraulic 90°	17	9	1
3296-2	Nut-Lock	3	6	4	353-988	Plug	15	22	1
3296-4	Nut-Lock	13	8	1	353-990	Plug	23	24	2
3296-4	Nut-Lock	6	16	2	354-73	Fitting-Hydraulic Straight	17	16	1
3296-8	Nut-Lock	18	1	3	354-120	Fitting-Hydraulic 90°	17	6	1
3296-8	Nut-Lock	4	8	1	354-126	Fitting-Hydraulic 45°	14	34	1
3296-9	Nut-Lock	13	21	2					

*Not Illustrated

PRODUCT CHANGES

In an effort to make improvements available to TORO owners as quickly as possible, minor changes are incorporated into Toro's products from time to time that do not become immediately shown in the Parts Catalog. If such a change has been made in your unit, which is not reflected in your manual, see your TORO Distributor or his Authorized TORO Service Dealer for information and part numbers.

IDENTIFICATION AND ORDERING

MODEL AND SERIAL NUMBERS

The Sand Pro 5020 has two identification numbers; a model number and a serial number. The two numbers are stamped on a plate which is located on the main frame. In any correspondence concerning the Sand Pro 5020, supply model and serial numbers to assure that correct information and replacement parts are obtained.

To order replacement parts from an Authorized TORO Service Dealer, supply the following information:

1. Model and serial number of the Sand Pro 5020.
2. Part number, description, and the quantity of part(s) desired.

NOTE: Do not order by reference number if a parts catalog is being used; use the PART NUMBER.

TABLE OF CONTENTS

Description	Page	Description	Page
Frame & Body Asm	1-2	Hydraulic Plumbing Asm	18
Air Cleaner & Control Panel Asm	3	Control Valve Asm No. 43-1710	19
Front Wheel Asm	4	Hydraulic Schematic	20
Front Hydraulic Drive Motor No. 98-0958	5	Rear Wheel Asm	21
Steering Asm	6	Left Rear Hydraulic Motor Asm	
Seat Asm	7	No. 97-3055	22
Parking Brake Asm	8	Right Rear Hydraulic Motor Asm	
Electrical Schematic	9	No. 98-0959	23
Fuel Tank & Battery Asm	10	Lift Asm	24
Engine & Muffler Asm	11	Hydraulic Lift Cylinder Asm No. 83-7000	25
Traction Pedal Asm	12	Fender Asm-Europe	26
Pump Control Lever Asm	13	Engine Briggs & Stratton	
Hydraulic Pump Installation Asm	14	Model 350447-1116-E1	27-39
Hydraulic Pump Asm No. 95-5842	15-16	TORO Part Number Index	38-42
Hydraulic Reservoir Asm	17		