



Count on it.

Parts Catalog

Debris Blower 600

Model No. 44536—Serial No. 403063078 and Up



Ordering Replacement Parts

To order replacement parts, please supply the part number, the quantity, and the description of each part desired.

Understanding Reference Numbers

Each identified part in an illustration has a reference number. The reference number for a part also appears in the parts list, along with other information about the part.

This catalog uses two special reference number formats, one to indicate parts in a service assembly and another to indicate the quantity of a given part in an illustration.

Service Assembly Reference Numbers

Parts in service assemblies have reference numbers in the form a:b. The a represents the reference number of the entire service assembly and the b represents a sequential number unique to each part within the service assembly.

For example, a wheel assembly might be identified by reference number 6, the tire by 6:1, the valve by 6:2, and the wheel by 6:3. When you order the assembly identified by reference number 6, you receive all parts identified by reference numbers 6:1, 6:2, and 6:3. However, you may also order any part individually. Reference numbers of this type appear in illustration and in parts lists.

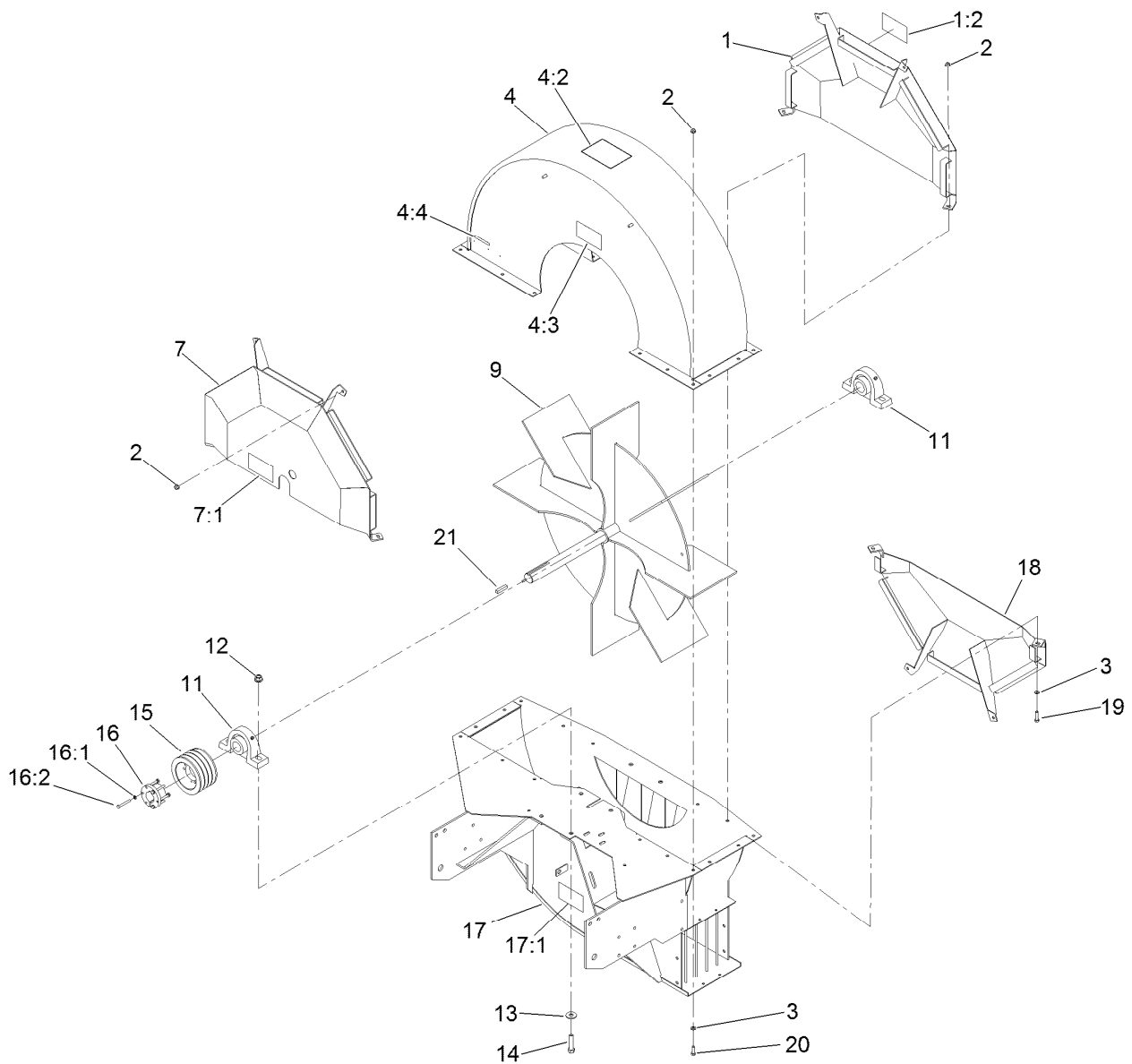
Reference Numbers Indicating Quantity

In an illustration, if a reference number indicates more than one part, the reference number has the form nX y. The n represents the quantity of the part, the X is the multiplication symbol, and the y represents the reference number.

For example, in an illustration, the reference number 2X 37 means that two of the parts identified by reference number 37 are indicated.

Contents

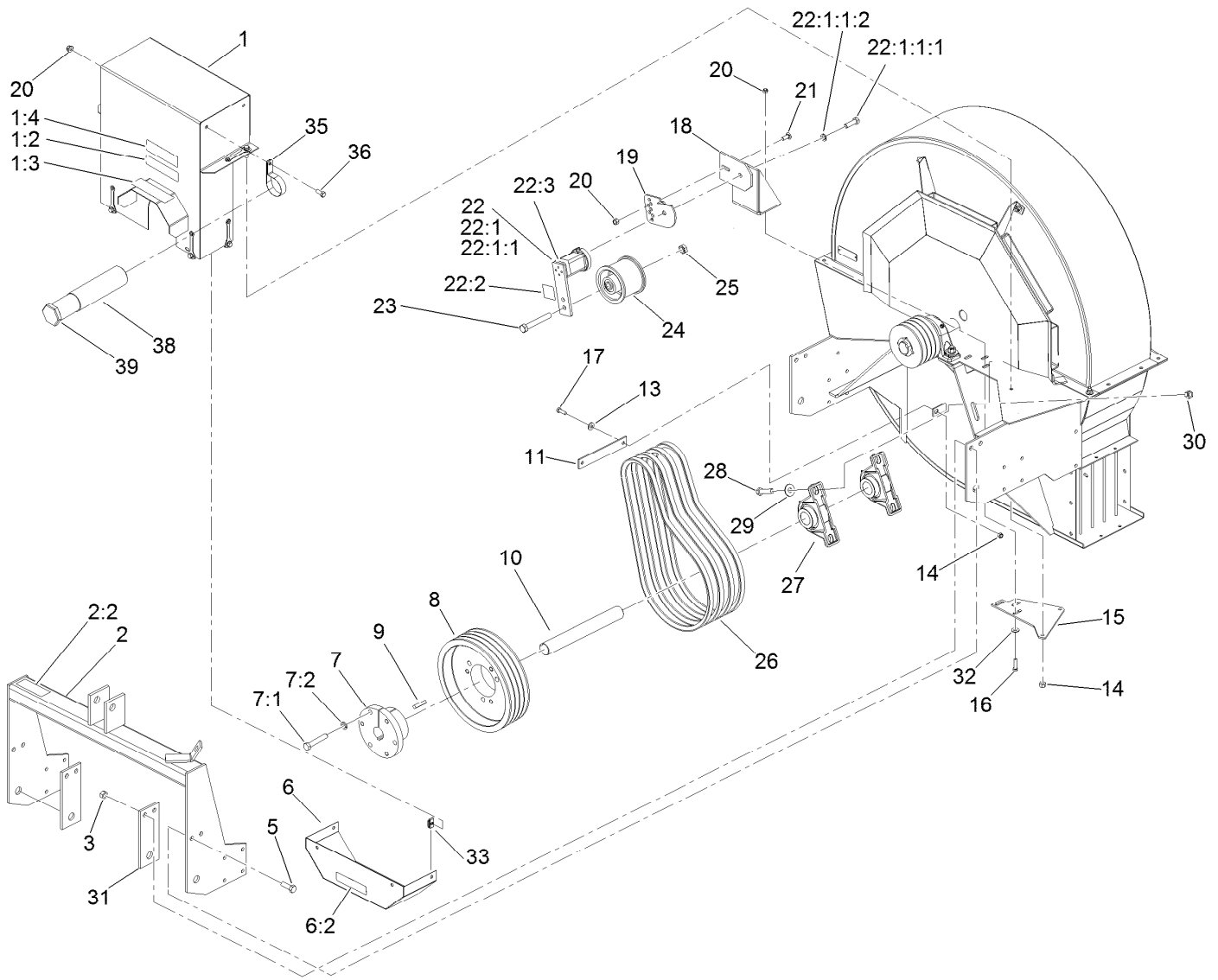
Housing and Impeller Assembly..... 4
Drive Assembly..... 5
Chute and Roller Assembly..... 7
Drive Shaft Assembly No. 105-4924..... 8
Joint, Shaft and Guard Assembly No. 107-1144..... 9



Housing and Impeller Assembly

Ref.	Part Number	Qty.	Description
1	105-0689	1	Shield-Fan
1:2	67-1300	1	Decal
2	104-8300	23	Nut-HF, NI
3	3256-23	17	Washer-Plain
4	107-1388	1	Blower Top ASM
4:2	98-3110	1	Decal-Caution
4:3	105-0709	2	Decal-Warning
4:4	133-8061	1	Decal-Warning
7	105-0713	1	Shield-Fan, Front
7:1	105-0709	1	Decal-Warning
9	106-0345-01	1	Impeller
11	105-0621	2	Bearing-Block, Pillow
12	99-5107	4	Nut-Lock

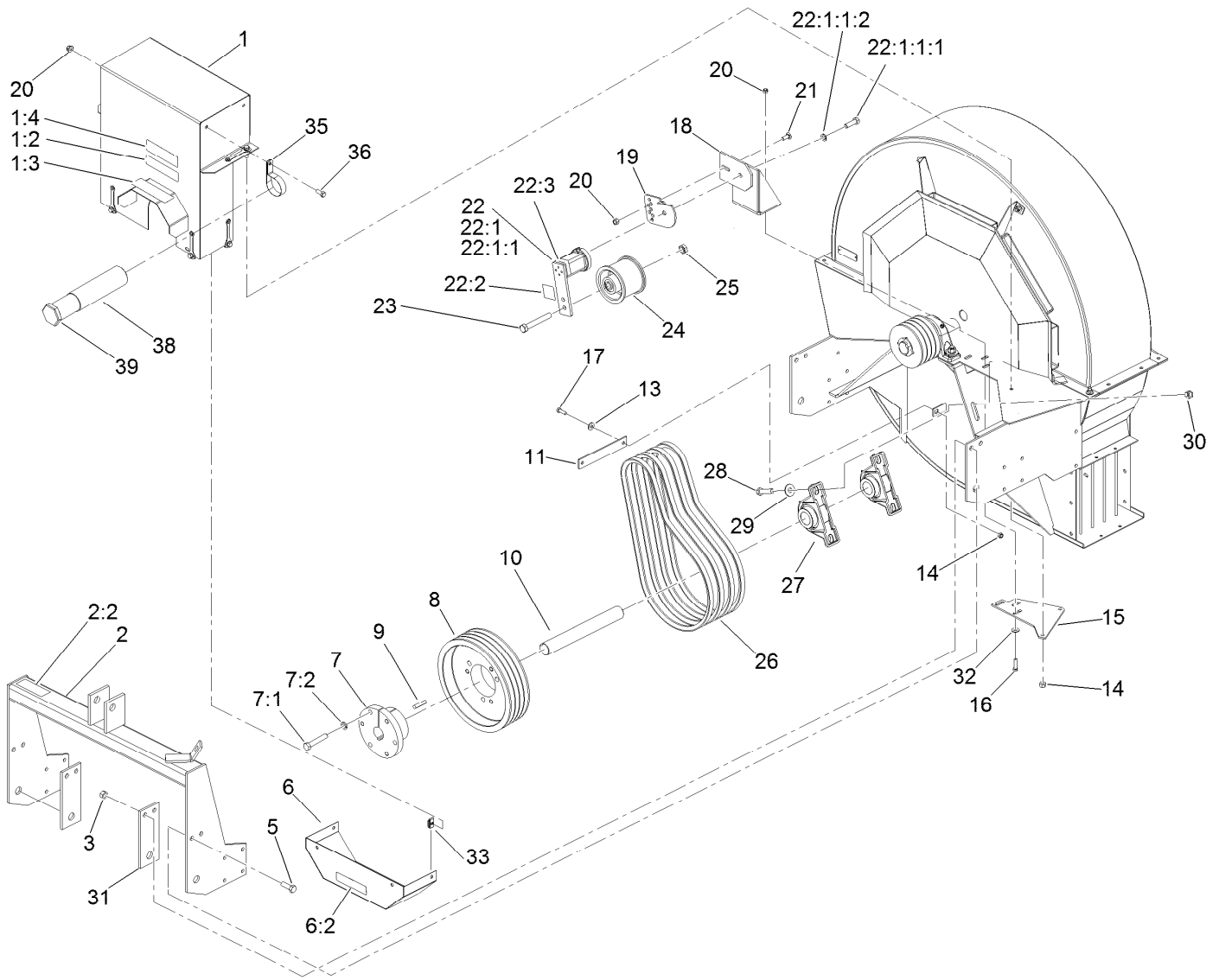
Ref.	Part Number	Qty.	Description
13	3256-6	4	Washer-Flat
14	325-9	4	Screw-HH
15	106-0354	1	Pulley
16	106-0359	1	Bushing-Pulley
16:1	321-11	3	Screw-HH
16:2	3253-3	3	Washer-Lock
17	107-1386	1	Frame ASM
17:1	105-0709	2	Decal-Warning
18	LDB11400-01	1	Shield-Fan, Lower
19	322-6	4	Screw-HH
20	322-5	13	Screw-HH
21	41-004-5241	1	Key



Drive Assembly

Ref.	Part Number	Qty.	Description	Ref.	Part Number	Qty.	Description
1	119-3011	1	Shield-Belt	14	104-8300	3	Nut-HF, NI
1:2	93-7814	1	Decal-Danger	15	LDB14200-01	1	Support-Deck
1:3	105-0628	1	Decal-Caution, U-Joint	16	323-8	3	Screw-HH
1:4	105-0627	1	Decal-Caution	17	322-5	1	Screw-HH
2	105-0714	1	Hitch ASM	18	LDB13200-01	1	Mount-Idler
2:2	105-0698	1	Decal-Caution	19	105-4787-01	1	Stabilizer-Tensioner
3	99-5107	4	Nut-Lock	20	104-8301	4	Nut-HF, NI
5	325-6	4	Screw-HH	21	3231-2	1	Bolt-CARR
6	105-0686	1	Shield-Lower	22	106-0334	1	Idler Tensioner ASM
6:2	93-7814	1	Decal-Danger	22:1		1	Tensioner-Idler, Modified ●
7	106-0361	1	Bushing-Pulley	22:1:1		1	Tensioner-Idler ●
7:1	325-11	3	Screw-HH	22:1:1:1	33116-040	1	Screw-HH
7:2	3253-7	3	Washer-Lock	22:1:1:2	3253-7	1	Washer-Lock
8	106-0356	1	Pulley	22:2	105-0668	1	Decal-Align
9	41-004-5241	1	Key	22:3	105-0669	1	Decal-Angle
10	LDB12100	1	Shaft-Input	23	3214-15	1	Screw-HH
11	LDB15700-01	1	Stabilizer-Shield	24	105-4821	1	Idler-Pulley
13	3256-23	1	Washer-Plain	25	3220-6	1	Nut-Jam

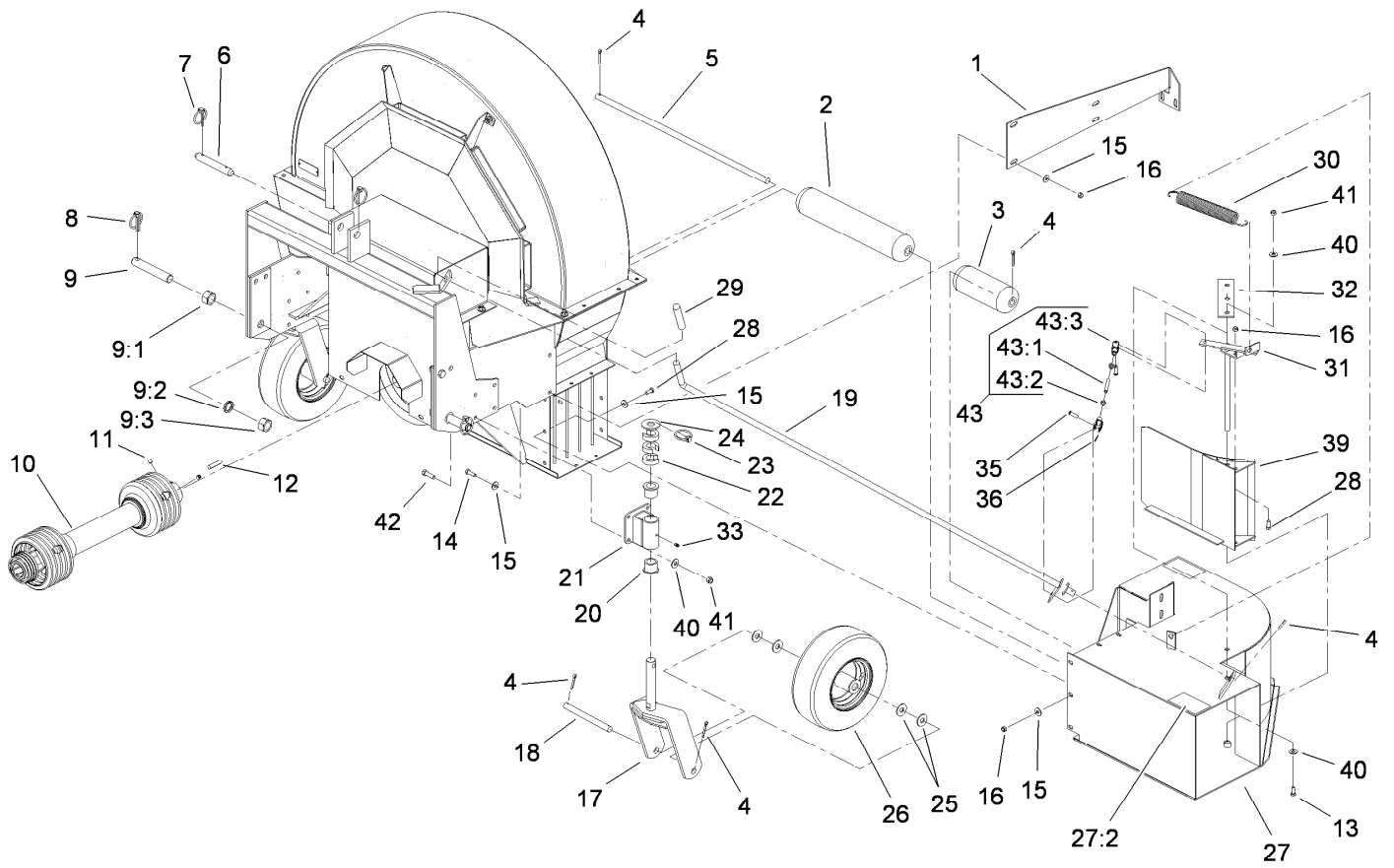
● Not serviced separately



Drive Assembly (continued)

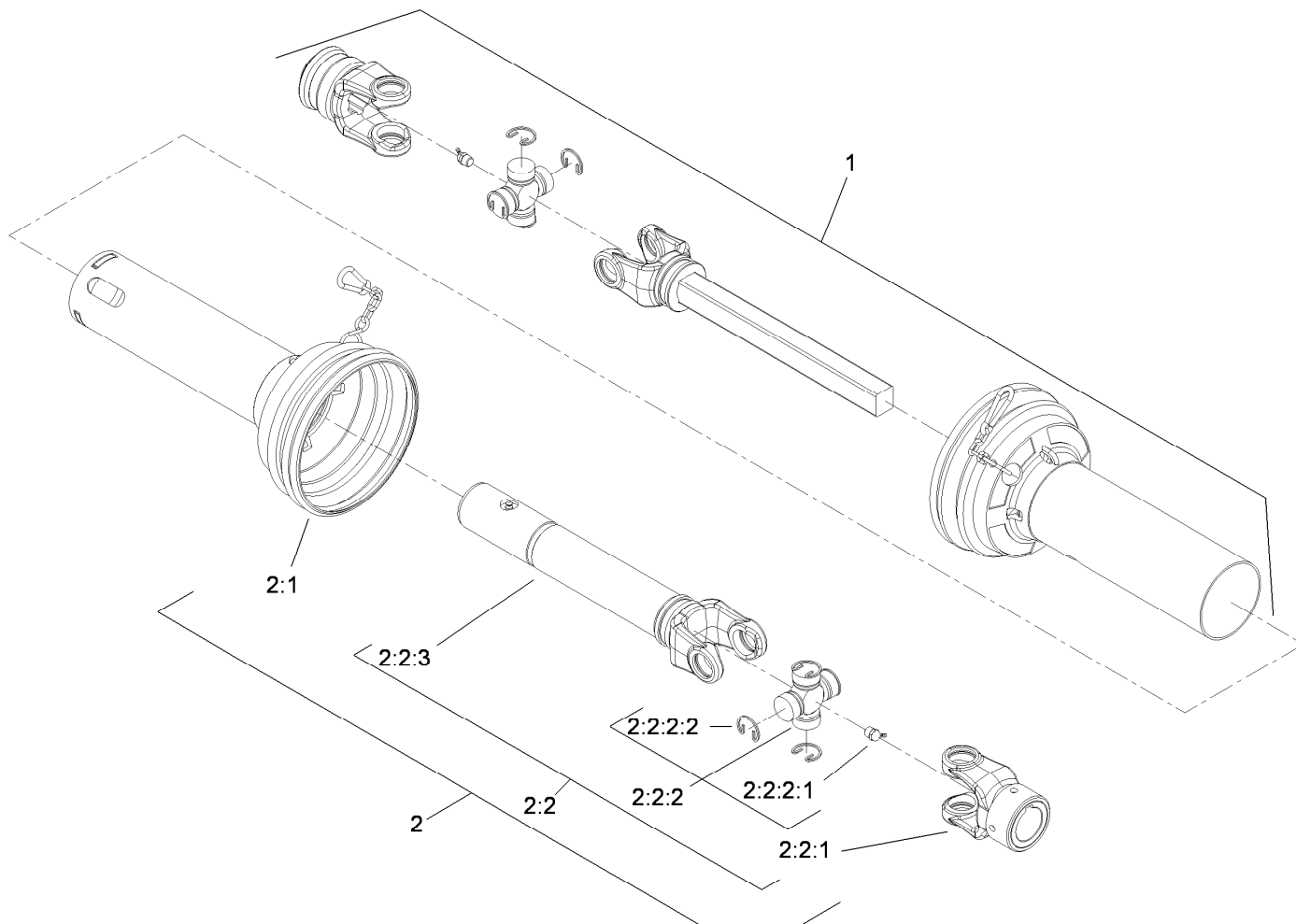
<i>Ref.</i>	<i>Part Number</i>	<i>Qty.</i>	<i>Description</i>	<i>Ref.</i>	<i>Part Number</i>	<i>Qty.</i>	<i>Description</i>
26	LDB13000	4	V-Belt	32	3256-4	2	Washer-Flat
27	105-0621	2	Bearing-Block, Pillow	33	94-2413	4	Nut-U
28	325-9	4	Screw-HH	35	2412-133	2	Clamp-R
29	3256-6	4	Washer-Flat	36	323-5	2	Screw-HH
30	99-5107	4	Nut-Lock	38	104-7050	1	Tube-Manual
31	LDB10300-01	2	Stiffener-Hitch	39	104-7048	1	Cap-Housing

● Not serviced separately



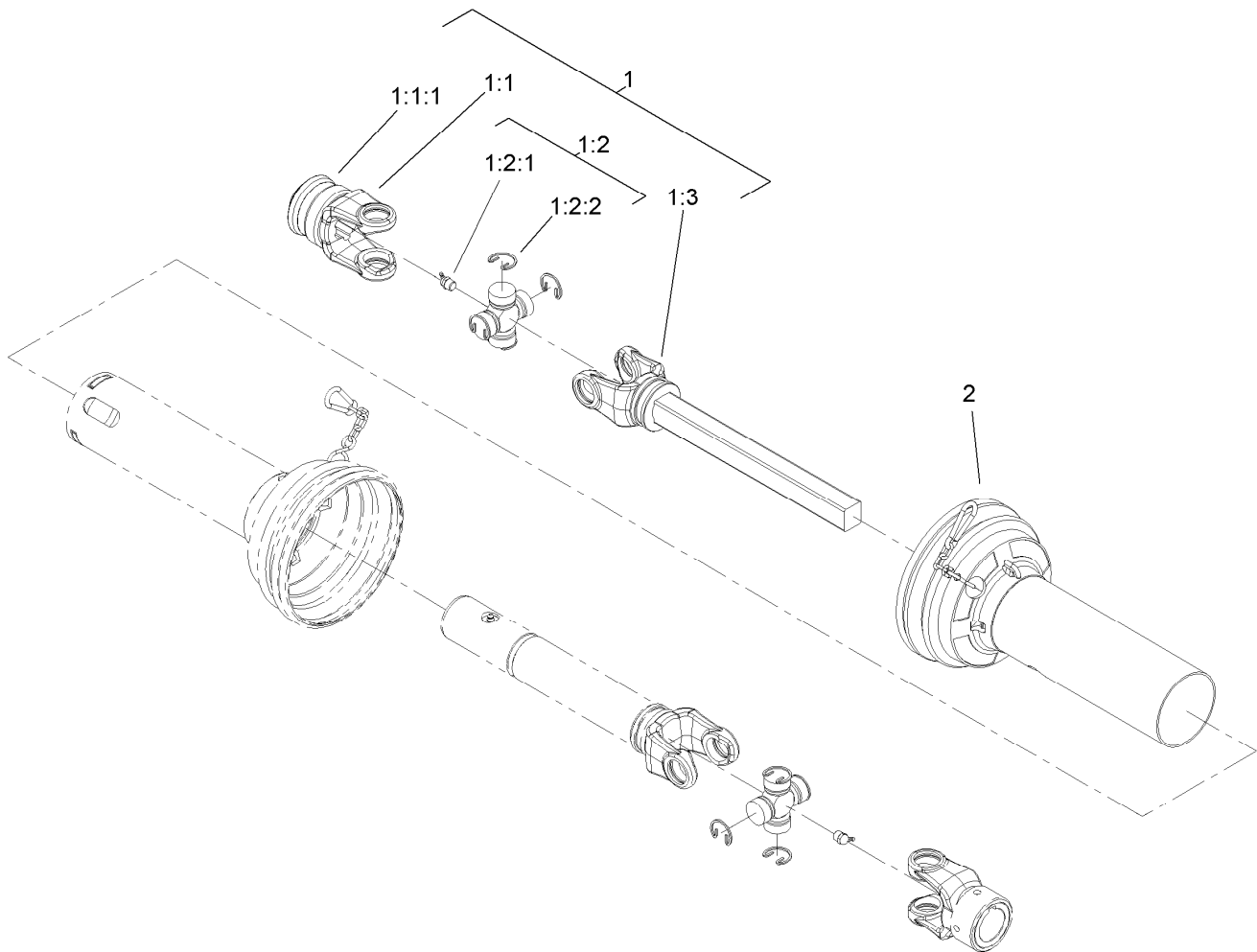
Chute and Roller Assembly

Ref.	Part Number	Qty.	Description	Ref.	Part Number	Qty.	Description
1	LDB11600-01	1	Brace-Discharge, Back	21	LDB11100-01	2	Mount-Caster
2	105-4823	1	Roller-Turf	22	LDB12600	6	Spacer-Slot
3	LDB13300	1	Roller-Turf, Short	23	283-71	2	Pin-Lynch
4	3272-22	7	Pin-Cotter	24	3256-62	2	Washer-Flat
5	LDB13500	1	Axle-Roller	25	3256-7	8	Washer-Flat
6	92-1233	1	Pin-Clevis	26	LDB12500	2	Castor Wheel ASM
7	92-1298	2	Pin-Lynch	27	105-0688	1	Discharge-Chute
8	283-71	2	Pin-Lynch	27:2	105-0708	2	Decal-Danger
9	01-252-0010	2	Lift Arm Pin Adjustment ASM	28	322-3	13	Screw-HH
9:1	3220-8	1	Nut-Jam	29	PT503-00	1	Cover-Handle
9:2	3253-28	1	Washer-Lock/Sp	30	105-4825	1	Spring
9:3	3219-8	1	Nut-Hex	31	LDB10600-01	1	Pivot-Diverter
10	105-4924	1	Driveshaft ASM	32	LDB10800-01	1	Plate-Top, Pin
11	3247-2	2	Screw-Set, HSH	33	302-5	2	Fitting-Grease
12	41-004-5241	1	Key	35	283-1	2	Pin-Clevis
13	323-6	2	Screw-HH	36	3272-10	2	Pin-Cotter
14	322-5	6	Screw-HH	39	LDB11800-01	1	Gate ASM
15	3256-23	32	Washer-Plain	40	3256-24	12	Washer-Flat
16	3296-29	17	Nut-Lock, NI	41	3296-39	10	Nut-Lock, NI
17	LDB10900-01	2	Caster-Fork	42	323-7	8	Screw-HH
18	LDB11000	2	Axle-Wheel, Caster	43	115-6678	1	Chute Lever ASM
19	LDB10700-01	1	Handle-Diverter	43:1	LDB14400	1	Rod-Threaded
20	LDB11103	4	Bushing-Flange	43:2	3220-2	2	Nut-Jam
				43:3	1-303105	2	Yoke-Adjustable



Drive Shaft Assembly No. 105-4924

<i>Ref.</i>	<i>Part Number</i>	<i>Qty.</i>	<i>Description</i>
1	107-1144	1	Joint And Shaft Half ASM
2	107-1146	1	Joint And Tube Half ASM
2:1	107-1155	1	Inner Guard
2:2	107-1147	1	Joint And Tube Half ASM
2:2:1	107-1158	1	Yoke
2:2:2	72-7990	1	Cross And Bearing Kit
2:2:2:1	302-10	1	Fitting-Grease
2:2:2:2	107-1161	4	Clip Retaining
2:2:3	107-1157	1	Yoke, Tube And Slip Sleeve ASM



Joint, Shaft and Guard Assembly No. 107-1144

<i>Ref.</i>	<i>Part Number</i>	<i>Qty.</i>	<i>Description</i>
1	107-1145	1	Joint And Shaft Half ASM
1:1	107-1148	1	Yoke-Spring Lock ASM
1:1:1	99-4477	1	Yoke Spring Lock Repair Kit
1:2	72-7990	1	Cross And Bearing Kit
1:2:1	302-10	1	Fitting-Grease
1:2:2	107-1161	4	Clip Retaining
1:3	107-1149	1	Yoke And Shaft
2	107-1154	1	Outer Guard

Notes:

Notes:



Count on it.