



PUC Hour Meter

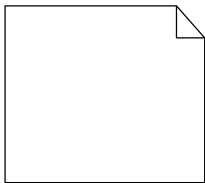
Model No. 99982

Form No. 3424-589 Rev A

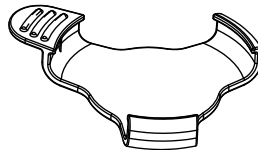
Installation Instructions

Installation

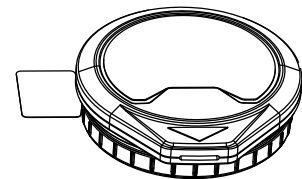
Installing the PUC



2x



2x



1x

Note: To ensure that the adhesive will stick, install the PUC in temperatures of 10°C (50°F) or higher.

1. Location of PUC installation:
 - Zero Turn Mower: on the left side of the engine mounting plate.
 - Push Mower: on the deck on the opposite side of the fuel cap.
 - Single Stage Snowthrower: on the plastic housing on the opposite side of the fuel cap.
 - Two Stage Snowthrower: on the metal housing.
2. Clean the location with the cleaning wipes.

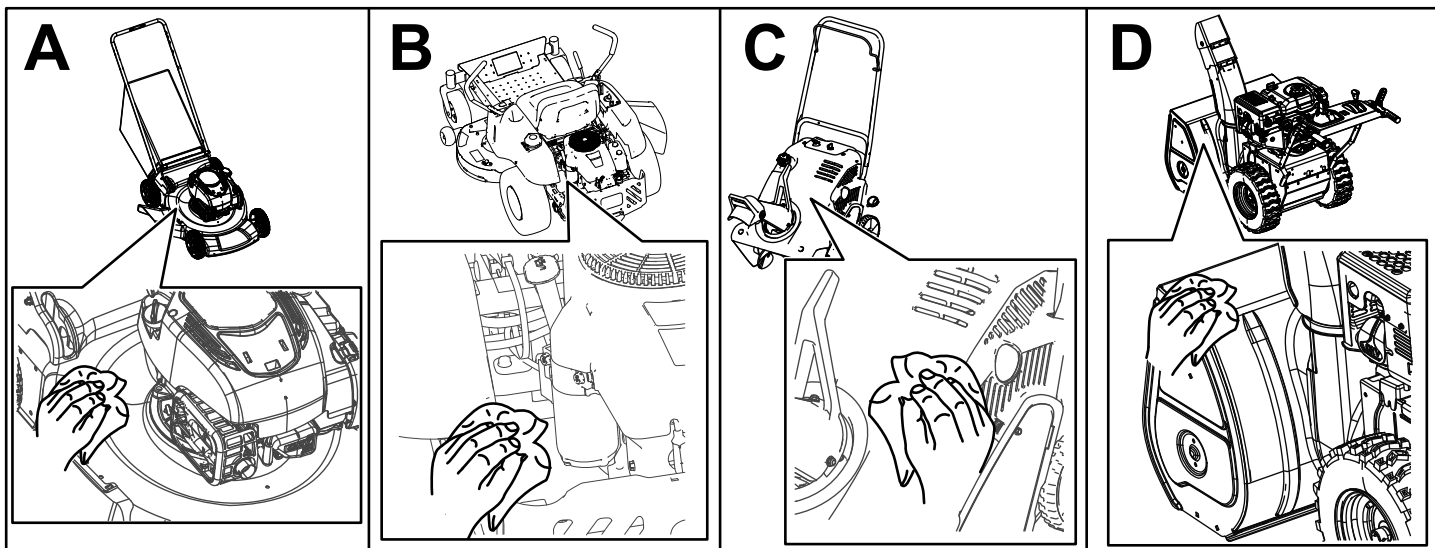


Figure 1

g259359



3. Remove the plastic cover from the mounting-clip adhesive.

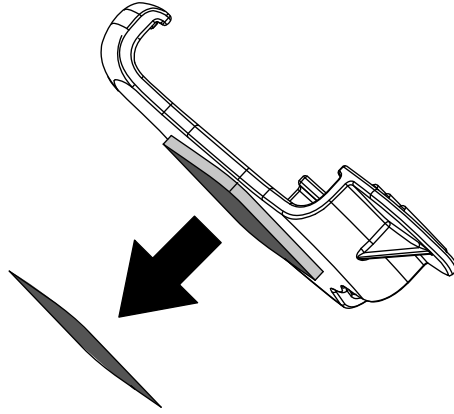


Figure 2

g259356

4. Install the mounting clip.

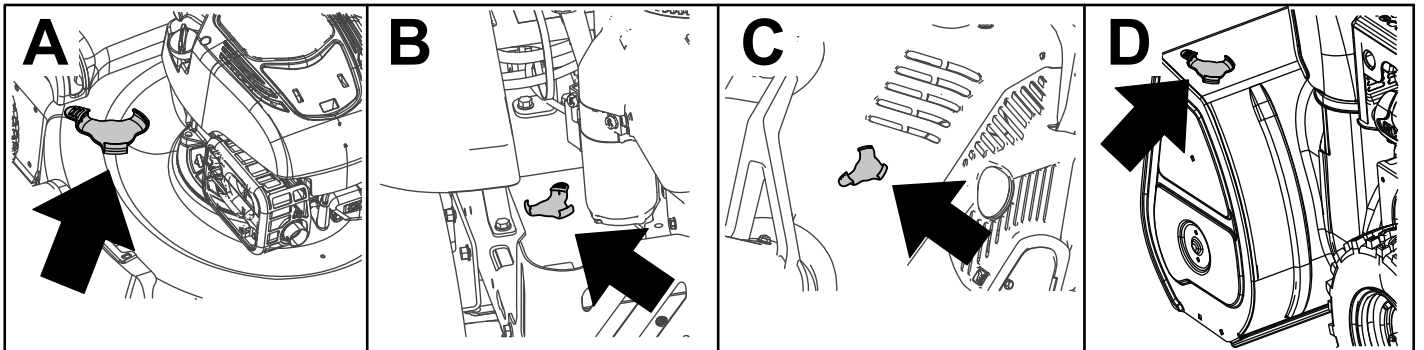


Figure 3

g259360

5. Remove the battery tab from the PUC assembly.

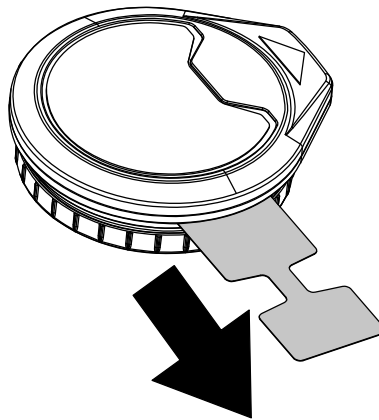


Figure 4

g259355

6. Install the PUC.

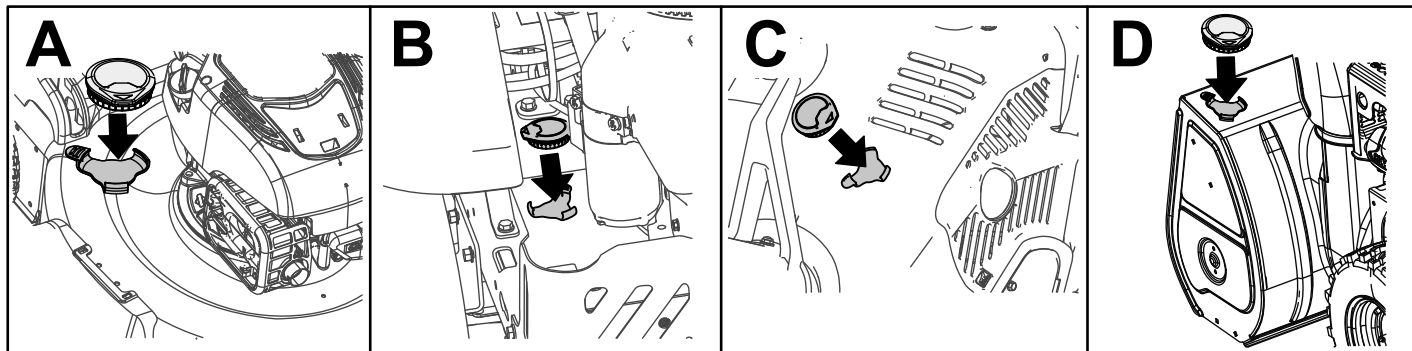


Figure 5

g259361

7. Install the MyToro app.

8. Pair your PUC with your Toro product.

- A. Open the MyToro app.
- B. Select the MENU icon
- C. Select the PUC MANAGEMENT option.
- D. Select SCAN.
- E. Select ASSIGN and select the machine that you want to pair with the PUC.

Operation

Remove the PUC before washing your machine.

Syncing the PUC Data

Note: To save battery life, the PUC does not automatically sync with your smartphone.

1. Open the MyToro app.
2. Select MY EQUIPMENT AND ACTIVITY.
3. Select the machine that the PUC is mounted on.
4. Select SYNC.

Moving the PUC to a Different Machine

1. Open the MyToro app.
2. Select the MENU icon.
3. Select PUC MANAGEMENT.
4. Select ASSIGN on the machine you want to monitor.
5. Move the PUC to the machine.

Changing the Battery

Battery: CR2450

Note: The MyToro app will show the battery life. Sync the PUC with your smartphone to get the most current information; refer to [Syncing the PUC Data \(page 3\)](#).

1. Remove the PUC from the mounting clip.
2. Insert a slot headed screwdriver into the slot and pry apart the 2 pieces of the PUC assembly.

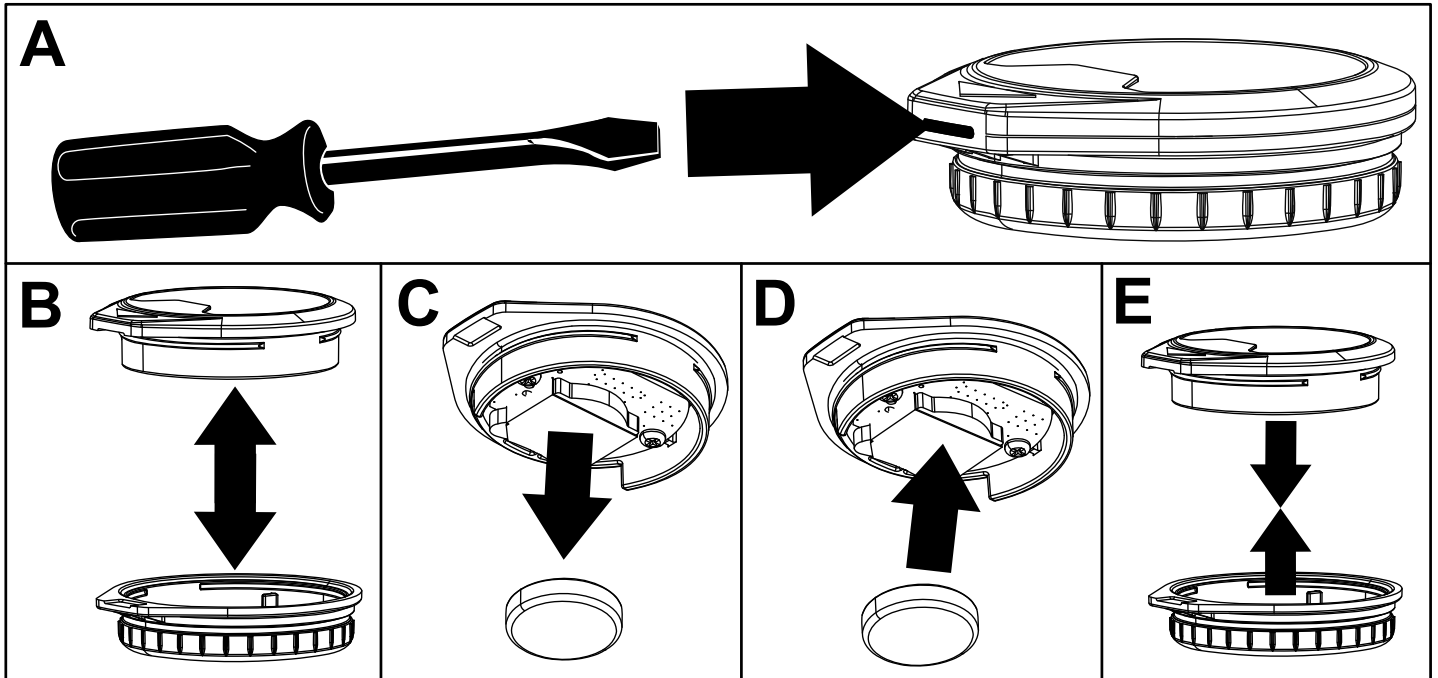


Figure 6

g259398

3. Remove the battery from the top of the PUC assembly.
4. Place the new battery into the PUC assembly.
5. Snap the 2 pieces of the assembly together.