



Count on it.

Parts Catalog

Rear Roller Brush Kit

**Reelmaster® 5010-H Series Cutting Unit with
5in Reel**

Model No. 03406



Ordering Replacement Parts

To order replacement parts, please supply the part number, the quantity, and the description of each part desired.

Understanding Reference Numbers

Each identified part in an illustration has a reference number. The reference number for a part also appears in the parts list, along with other information about the part.

This catalog uses two special reference number formats, one to indicate parts in a service assembly and another to indicate the quantity of a given part in an illustration.

Service Assembly Reference Numbers

Parts in service assemblies have reference numbers in the form a:b. The a represents the reference number of the entire service assembly and the b represents a sequential number unique to each part within the service assembly.

For example, a wheel assembly might be identified by reference number 6, the tire by 6:1, the valve by 6:2, and the wheel by 6:3. When you order the assembly identified by reference number 6, you receive all parts identified by reference numbers 6:1, 6:2, and 6:3. However, you may also order any part individually. Reference numbers of this type appear in illustration and in parts lists.

Reference Numbers Indicating Quantity

In an illustration, if a reference number indicates more than one part, the reference number has the form nX y. The n represents the quantity of the part, the X is the multiplication symbol, and the y represents the reference number.

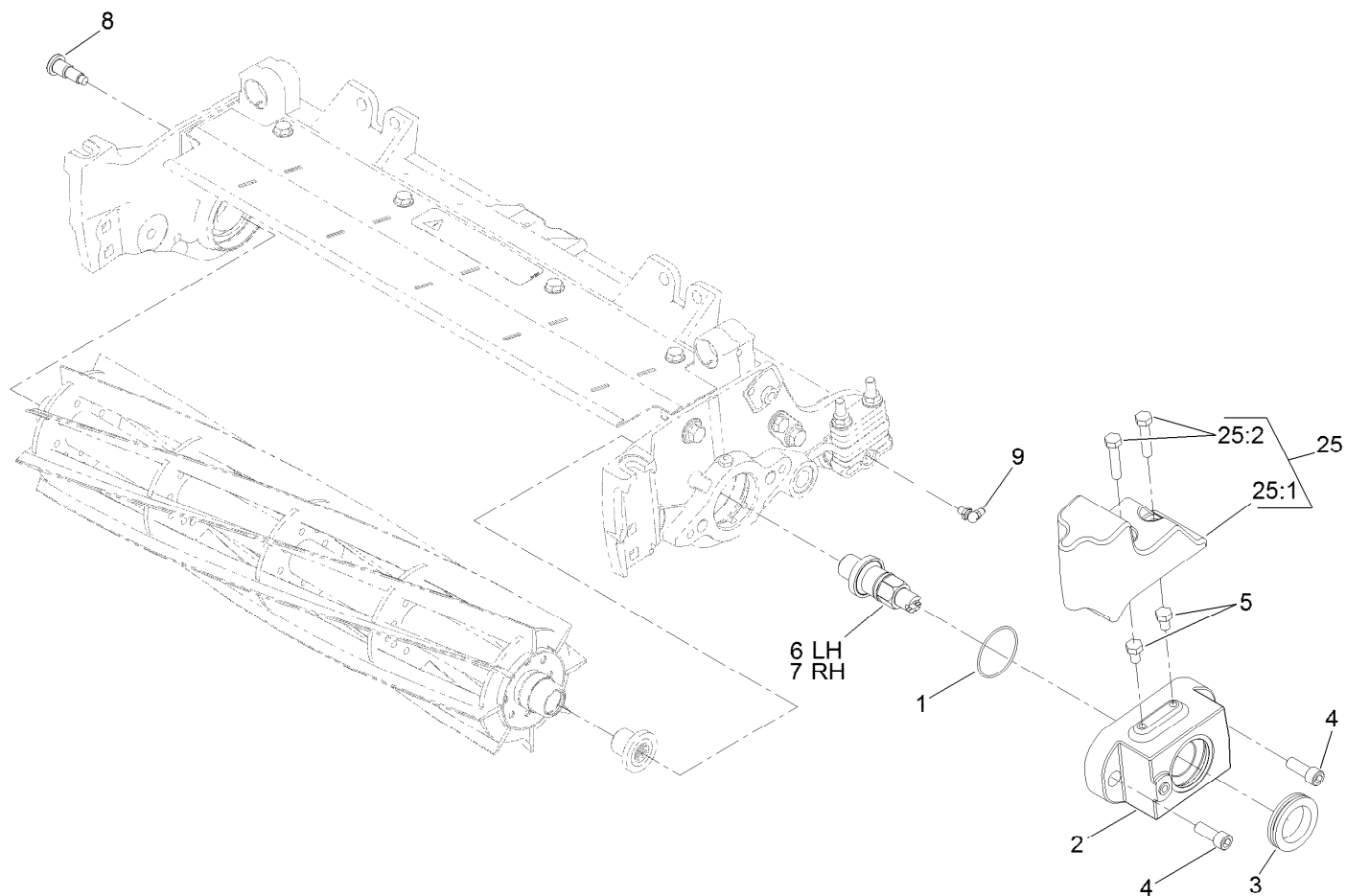
For example, in an illustration, the reference number 2X 37 means that two of the parts identified by reference number 37 are indicated.

Contents

Drive Assembly 4

Roller Brush Assembly 5

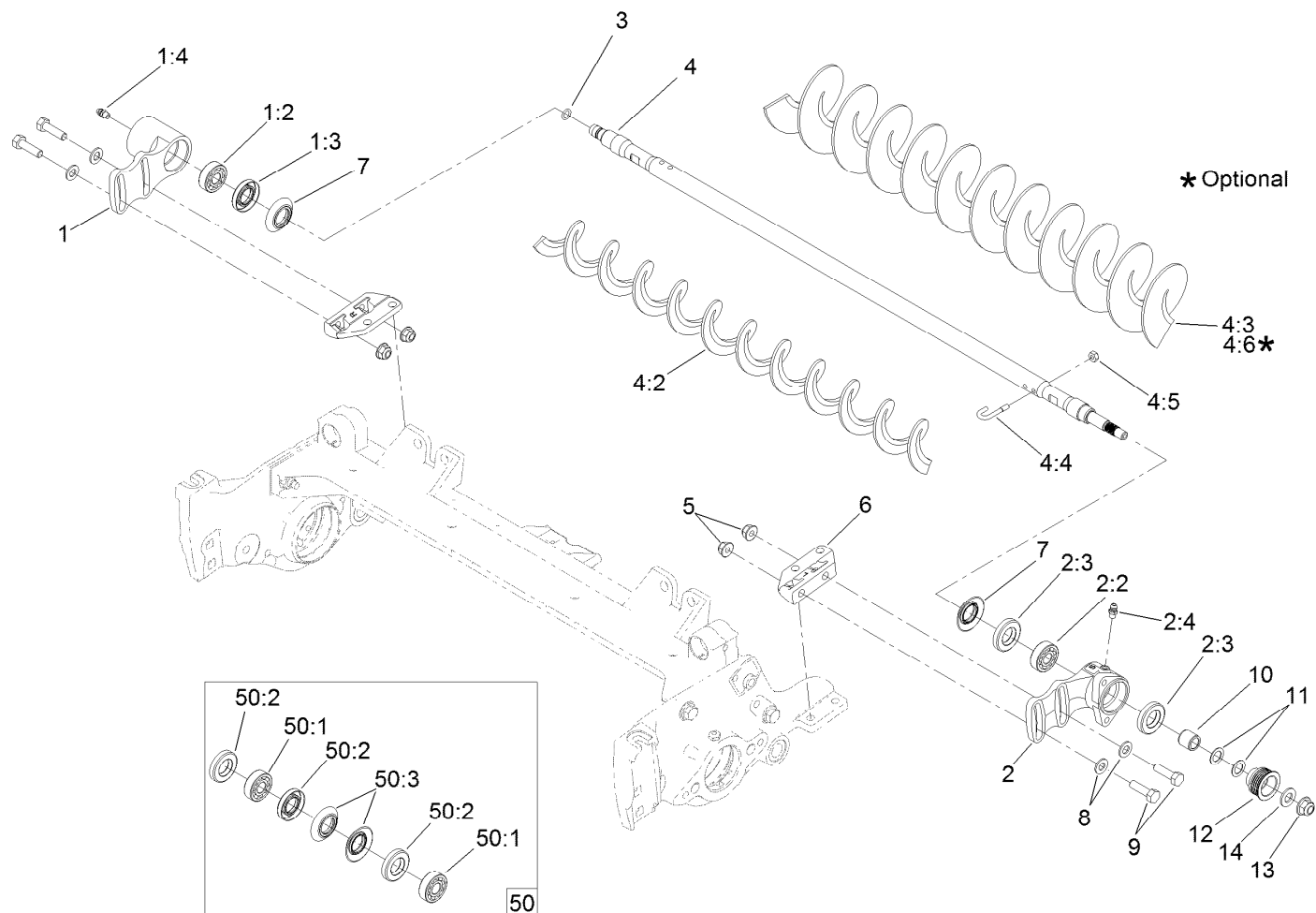
Plate Assembly 6



Drive Assembly

Ref.	Part Number	Qty.	Description
1	237-68	5	O-Ring
2	130-4103-03	5	Housing-Bearing, Drive
3	240-7	5	Grommet-Rubber
4	3274-7	10	Screw-HSH
5	322-1	10	Screw-HH
6	125-2788	3	Shaft-Drive, LH
7	125-2787	2	Shaft-Drive, RH
8	127-7122	5	Bolt-Shoulder, Flange Hex Socket
9	104-1843	5	Fitting-Grease, 90 DEG
25	130-4147	1	5In Groomer/RRB Electric Weight Kit ●
25:1	127-4259-03	5	Weight-End
25:2	322-7	10	Screw-HH

● Optional Equipment



Roller Brush Assembly

Ref.	Part Number	Qty.	Description
1	127-7144	5	Non Driven Bearing Housing ASM
1:2	95-0707	1	Bearing-Aligning, Self
1:3	106-8530	1	Seal-Grease
1:4	302-5	1	Fitting-Grease
2	127-7143	5	5 Inch Driven Bearing Housing ASM
2:2	95-0707	1	Bearing-Aligning, Self
2:3	106-8530	2	Seal-Grease
2:4	302-5	1	Fitting-Grease
3	107-8844	5	O-Ring
4	127-7146	5	22 Inch Roller Brush ASM
4:2	108-4193	1	Brush-Roller
4:3	110-1740	1	Brush-Roller, High HOC ●
4:4	105-9632	2	Bolt-J
4:5	3296-2	2	Nut-Lock, NI

Ref.	Part Number	Qty.	Description
4:6	137-0842	1	HD Brush-Rear Roller, 22In ●
5	104-8300	20	Nut-HF, NI
6	108-4480	10	Bracket-Mounting
7	108-4172	10	Seal-Excluder
8	94-6936	20	Washer-Hardened
9	322-16	20	Screw-HH
10	127-7139	5	Spacer-Pulley, Driven
11	112-6957	10	Washer-Hardened
12	115-0821	5	Pulley-Driven, RRB (5-Rib)
13	104-8301	5	Nut-HF, NI
14	48-9220	1	Washer-Plain
50	131-3233	1	Groomer/RRB Seal Kit
50:1	95-0707	2	Bearing-Aligning, Self
50:2	106-8530	3	Seal-Grease
50:3	108-4172	2	Seal-Excluder

● Optional Equipment

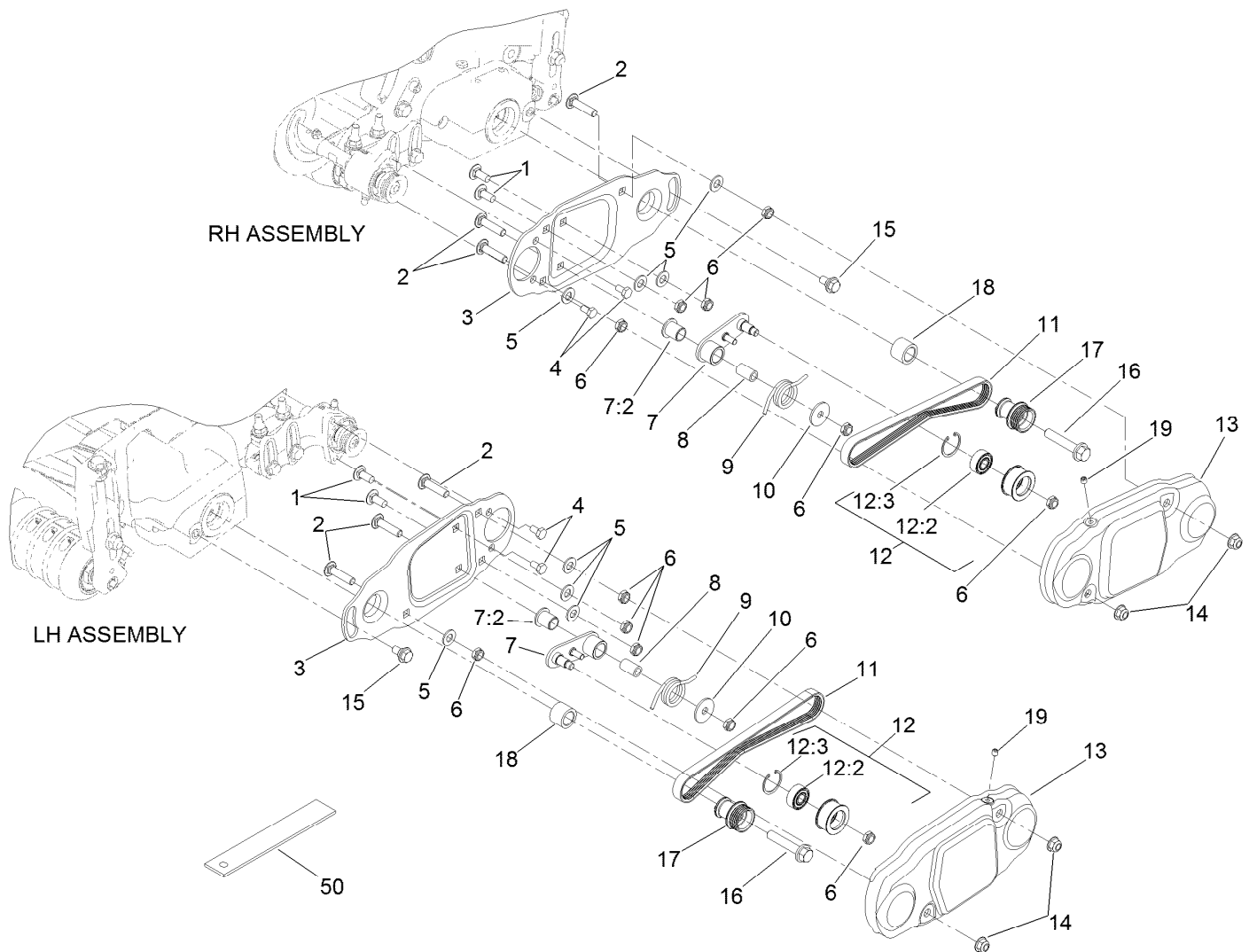


Plate Assembly

Ref.	Part Number	Qty.	Description
1	3230-23	10	Screw-CARR
2	112-6950	15	Screw-CARR
3	115-0896-03	5	Plate-Brush, 5 Inch
4	322-1	10	Screw-HH
5	3256-45	20	Washer-Flat
6	3296-47	30	Nut-Lock, NI
7	115-0834	5	Idler Arm ASM
7:2	125-8775	1	Bushing-Flange
8	115-0826	5	Spacer-Idler
9	115-0839	5	Spring-Idler
10	5-4460	5	Washer-Pivot
11	115-0894	5	Belt-Brush, 5 Inch (5-Rib)

Ref.	Part Number	Qty.	Description
12	114-9397	5	Idler Pulley ASM
12:2	110-1701	1	Bearing
12:3	32151-60	1	Ring-Snap
13	115-0897-03	5	Cover-Brush, 5 Inch
14	104-8300	10	Nut-HF, NI
15	27-0411	5	Screw-Shoulder
16	66-9302	5	Screw-HHF, Whiz
17	115-0899	5	Pulley-Driver, 5 Inch
18	108-4477	5	Spacer
19	108-0989	5	Screw-Set
50	114-5446	1	Tool-Alignment ●

● Optional Equipment

Notes:



Count on it.