



Count on it.

Form No. 3424-798 Rev A

Parts Catalog

LC1P65FC Zone-Start Engine

Model No. 139-0607



Ordering Replacement Parts

To order replacement parts, please supply the part number, the quantity, and the description of each part desired.

Understanding Reference Numbers

Each identified part in an illustration has a reference number. The reference number for a part also appears in the parts list, along with other information about the part.

This catalog uses two special reference number formats, one to indicate parts in a service assembly and another to indicate the quantity of a given part in an illustration.

Service Assembly Reference Numbers

Parts in service assemblies have reference numbers in the form a:b. The a represents the reference number of the entire service assembly and the b represents a sequential number unique to each part within the service assembly.

For example, a wheel assembly might be identified by reference number 6, the tire by 6:1, the valve by 6:2, and the wheel by 6:3. When you order the assembly identified by reference number 6, you receive all parts identified by reference numbers 6:1, 6:2, and 6:3. However, you may also order any part individually. Reference numbers of this type appear in illustration and in parts lists.

Reference Numbers Indicating Quantity

In an illustration, if a reference number indicates more than one part, the reference number has the form nX y. The n represents the quantity of the part, the X is the multiplication symbol, and the y represents the reference number.

For example, in an illustration, the reference number 2X 37 means that two of the parts identified by reference number 37 are indicated.

Contents

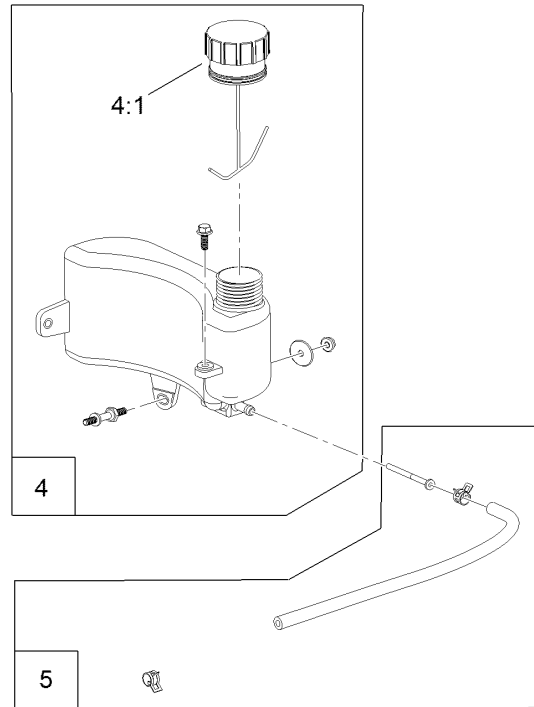
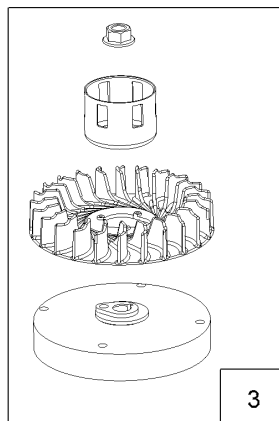
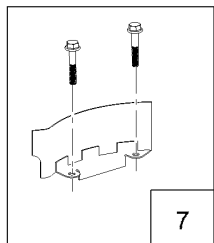
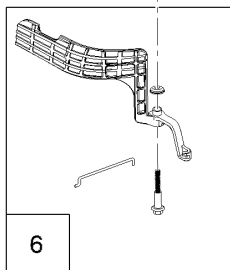
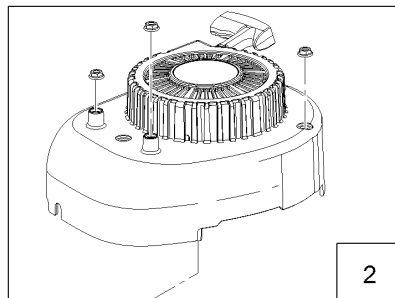
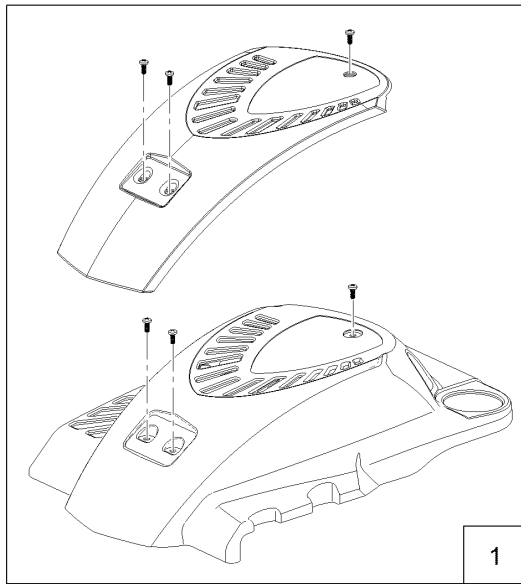
Shroud, Flywheel and Fuel Tank Assembly 4

Dipstick, Brake and Governor Arm Assembly 6

Dipstick and Gasket Assembly. 8

Seal and Gasket Kit No. 127-9144 10

Shroud, Flywheel and Fuel Tank Assembly

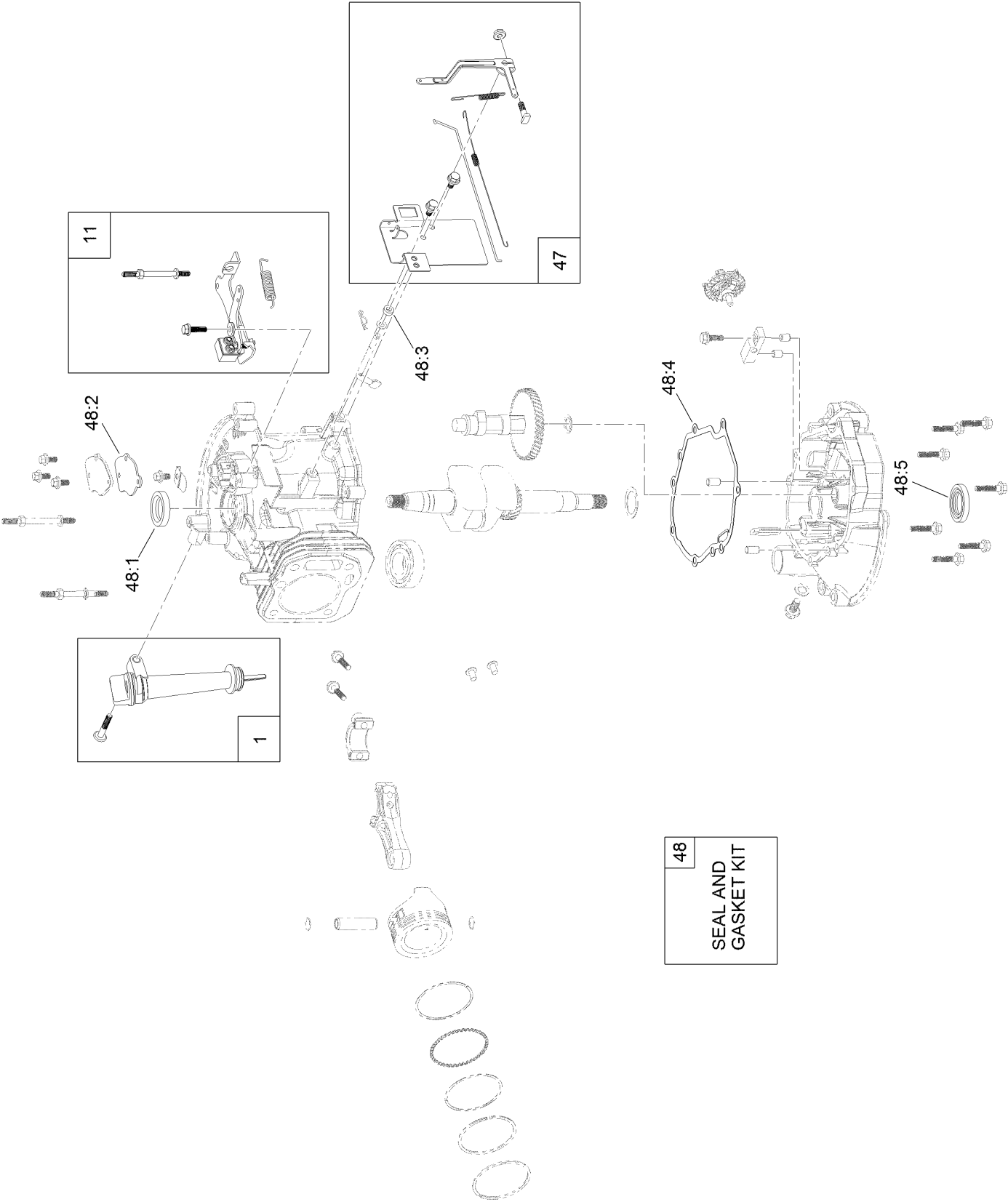


Shroud, Flywheel and Fuel Tank Assembly (continued)

| <i>Ref.</i> | <i>Part Number</i> | <i>Qty.</i> | <i>Description</i> |
|-------------|--------------------|-------------|------------------------------|
| 1 | 119-1990 | 1 | Shroud ASM |
| 2 | 121-4160 | 1 | Recoil And Blower Shroud Kit |
| 3 | 119-1970 | 1 | Flywheel And Fan Kit |
| 4 | 121-4162 | 1 | Fuel Tank Kit |

| <i>Ref.</i> | <i>Part Number</i> | <i>Qty.</i> | <i>Description</i> |
|-------------|--------------------|-------------|---------------------|
| 4:1 | 121-4163 | 1 | Cap-Fuel |
| 5 | 121-4167 | 1 | Fuel Line Kit |
| 6 | 121-4168 | 1 | Air Vane Kit |
| 7 | 119-1994 | 1 | Flywheel Shield Kit |

Dipstick, Brake and Governor Arm Assembly

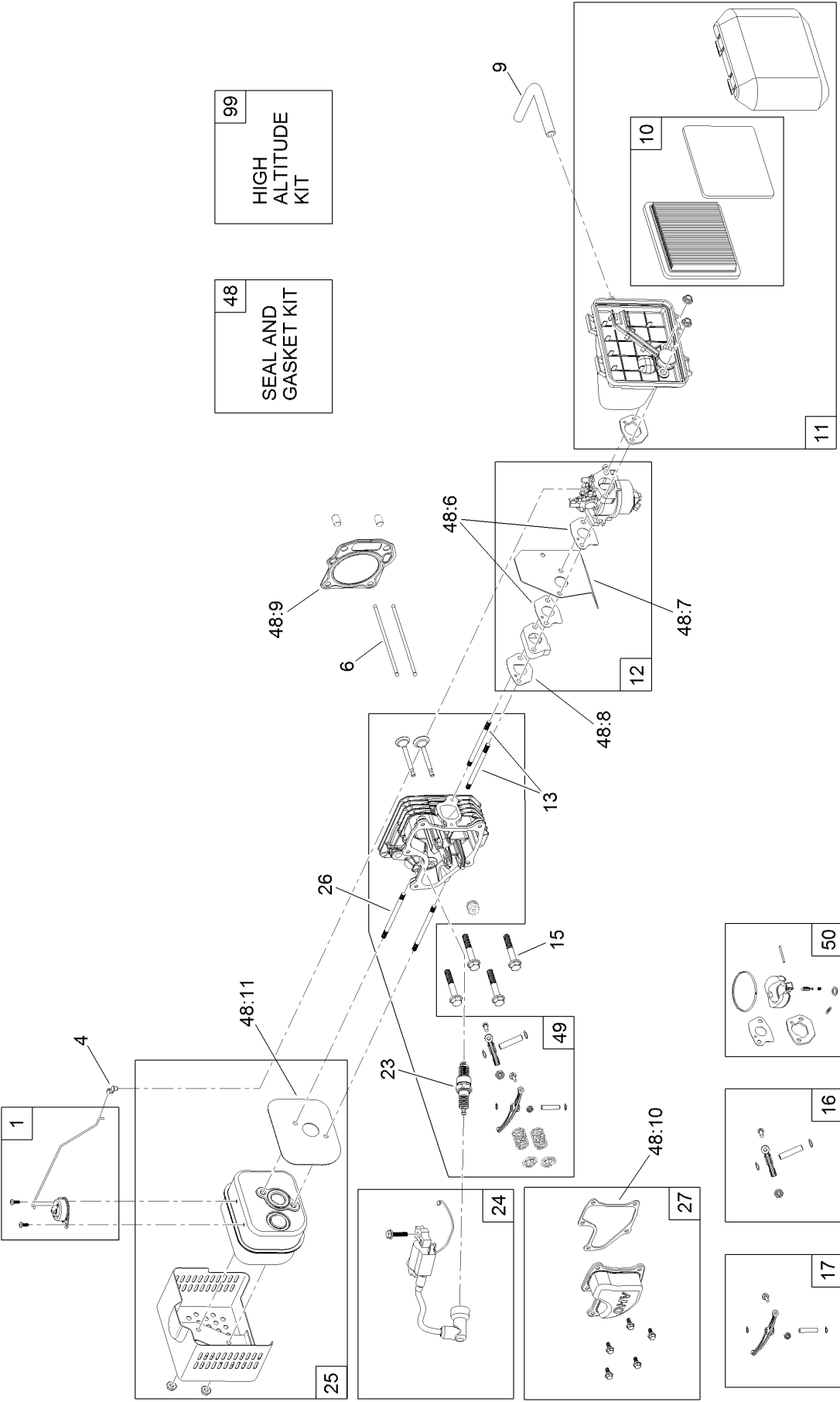


Dipstick, Brake and Governor Arm Assembly (continued)

| <i>Ref.</i> | <i>Part Number</i> | <i>Qty.</i> | <i>Description</i> |
|-------------|--------------------|-------------|----------------------------|
| 1 | 121-4279 | 1 | Dipstick And Fill Tube Kit |
| 11 | 119-1991 | 1 | Brake ASM Recoil Kit |
| 47 | 119-1968 | 1 | Governor Arm Kit |
| 48 | 127-9144 | 1 | Seal And Gasket Kit |
| 48:1 | 121-0019 | 1 | Seal-Oil |

| <i>Ref.</i> | <i>Part Number</i> | <i>Qty.</i> | <i>Description</i> |
|-------------|--------------------|-------------|--------------------|
| 48:2 | 121-0020 | 1 | Gasket-Breather |
| 48:3 | 121-0021 | 1 | Seal-Oil |
| 48:4 | 120-4459 | 1 | Gasket-Cover, Case |
| 48:5 | 121-0022 | 1 | Seal-Oil |

Dipstick and Gasket Assembly

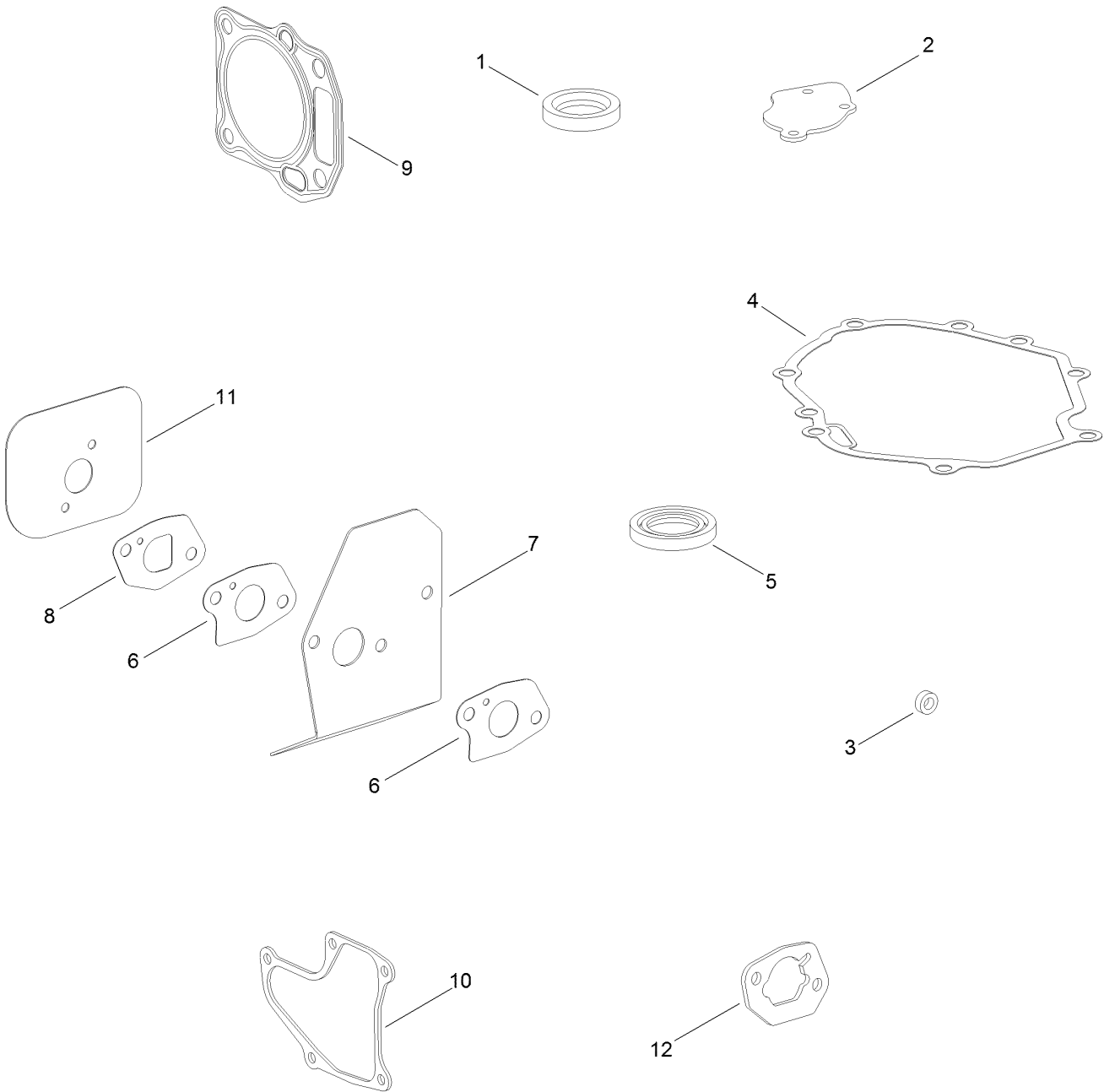


Dipstick and Gasket Assembly (continued)

| <i>Ref.</i> | <i>Part Number</i> | <i>Qty.</i> | <i>Description</i> |
|-------------|--------------------|-------------|------------------------------|
| 1 | 121-4175 | 1 | Thermal Control Kit |
| 4 | 120-4451 | 1 | Lock-Throttle |
| 6 | 121-4193 | 2 | Rod-Push |
| 9 | 119-1902 | 1 | Tube-Breather |
| 10 | 119-1909 | 1 | Air Filter And Prefilter Kit |
| 11 | 121-4177 | 1 | Air Cleaner ASM Kit |
| 12 | 136-7907 | 1 | Carb Replacement Kit |
| 13 | 121-0367 | 2 | Stud-Intake |
| 15 | 121-0043 | 4 | Bolt-Flange |
| 16 | 136-7869 | 1 | Intake Rocker Arm ASM |
| 17 | 136-7868 | 1 | Exhaust Rocker Arm ASM |
| 23 | 121-4199 | 1 | Spark Plug |
| 24 | 136-7912 | 1 | Ignition ASM |
| 25 | 121-4277 | 1 | Muffler And Shield Kit |

| <i>Ref.</i> | <i>Part Number</i> | <i>Qty.</i> | <i>Description</i> |
|-------------|--------------------|-------------|--------------------------------|
| 26 | 121-0045 | 2 | Stud-Exhaust |
| 27 | 121-4188 | 1 | Valve Cover Kit |
| 48 | 127-9144 | 1 | Seal And Gasket Kit |
| 48:6 | 121-4184 | 2 | Gasket-Carburetor |
| 48:7 | 120-4446 | 1 | Insulator-Carburetor |
| 48:8 | 121-4183 | 1 | Gasket-Intake |
| 48:9 | 121-4197 | 1 | Gasket-Head |
| 48:10 | 121-4190 | 1 | Gasket-Valve Cover |
| 48:11 | 121-0034 | 1 | Gasket-Exhaust |
| 49 | 136-7915 | 1 | Complete Head ASM |
| 50 | 127-9146 | 1 | Internal Carb Kit With Gaskets |
| 99 | 121-4242 | 1 | High Altitude Kit |

Seal and Gasket Kit No. 127-9144



Seal and Gasket Kit No. 127-9144 (continued)

| <i>Ref.</i> | <i>Part Number</i> | <i>Qty.</i> | <i>Description</i> |
|-------------|--------------------|-------------|--------------------|
| 1 | 121-0019 | 1 | Seal-Oil |
| 2 | 121-0020 | 1 | Gasket-Breather |
| 3 | 121-0021 | 1 | Seal-Oil |
| 4 | 120-4459 | 1 | Gasket-Cover, Case |
| 5 | 121-0022 | 1 | Seal-Oil |
| 6 | 121-4184 | 2 | Gasket-Carburetor |

| <i>Ref.</i> | <i>Part Number</i> | <i>Qty.</i> | <i>Description</i> |
|-------------|--------------------|-------------|----------------------|
| 7 | 120-4446 | 1 | Insulator-Carburetor |
| 8 | 121-4183 | 1 | Gasket-Intake |
| 9 | 121-4197 | 1 | Gasket-Head |
| 10 | 121-4190 | 1 | Gasket-Valve Cover |
| 11 | 121-0034 | 1 | Gasket-Exhaust |
| 12 | 121-4179 | 1 | Gasket-Air Cleaner |



Count on it.