



Form No. 3404-464 Rev B

Count on it.

Parts Catalog

Triple Bagger Hopper Kit Groundsmaster® 360 and 7200 Series Traction Unit

Model No. 31211—Serial No. 316000001 and Up



Ordering Replacement Parts

To order replacement parts, please supply the part number, the quantity, and the description of each part desired.

Understanding Reference Numbers

Each identified part in an illustration has a reference number. The reference number for a part also appears in the parts list, along with other information about the part.

This catalog uses two special reference number formats, one to indicate parts in a service assembly and another to indicate the quantity of a given part in an illustration.

Service Assembly Reference Numbers

Parts in service assemblies have reference numbers in the form a:b. The a represents the reference number of the entire service assembly and the b represents a sequential number unique to each part within the service assembly.

For example, a wheel assembly might be identified by reference number 6, the tire by 6:1, the valve by 6:2, and the wheel by 6:3. When you order the assembly identified by reference number 6, you receive all parts identified by reference numbers 6:1, 6:2, and 6:3. However, you may also order any part individually. Reference numbers of this type appear in illustration and in parts lists.

Reference Numbers Indicating Quantity

In an illustration, if a reference number indicates more than one part, the reference number has the form nX y. The n represents the quantity of the part, the X is the multiplication symbol, and the y represents the reference number.

For example, in an illustration, the reference number 2X 37 means that two of the parts identified by reference number 37 are indicated.

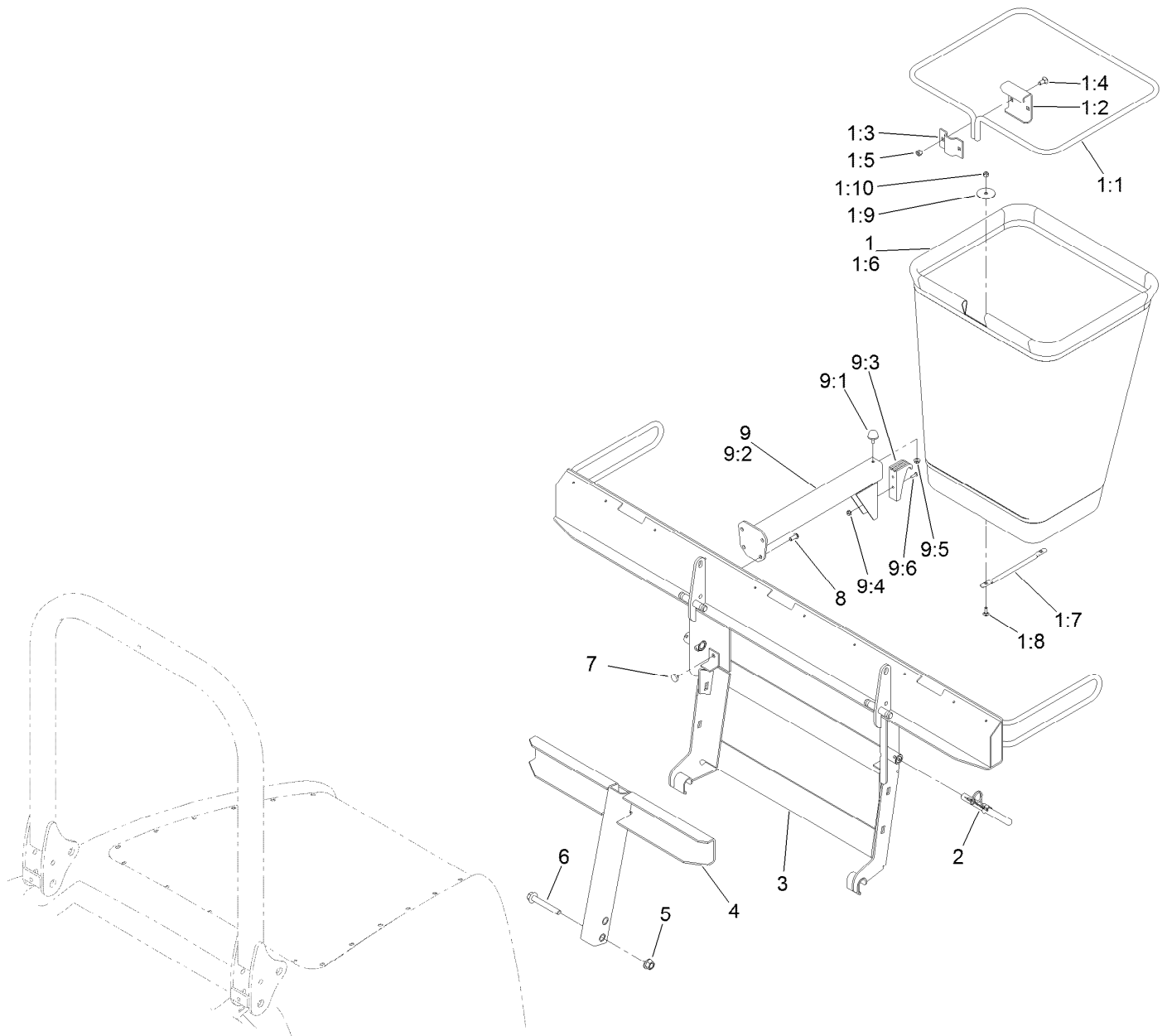
Contents

Bag and Frame Assembly..... 4

Hood Assembly..... 6

Lower Tube and Upper Tube Assembly 8

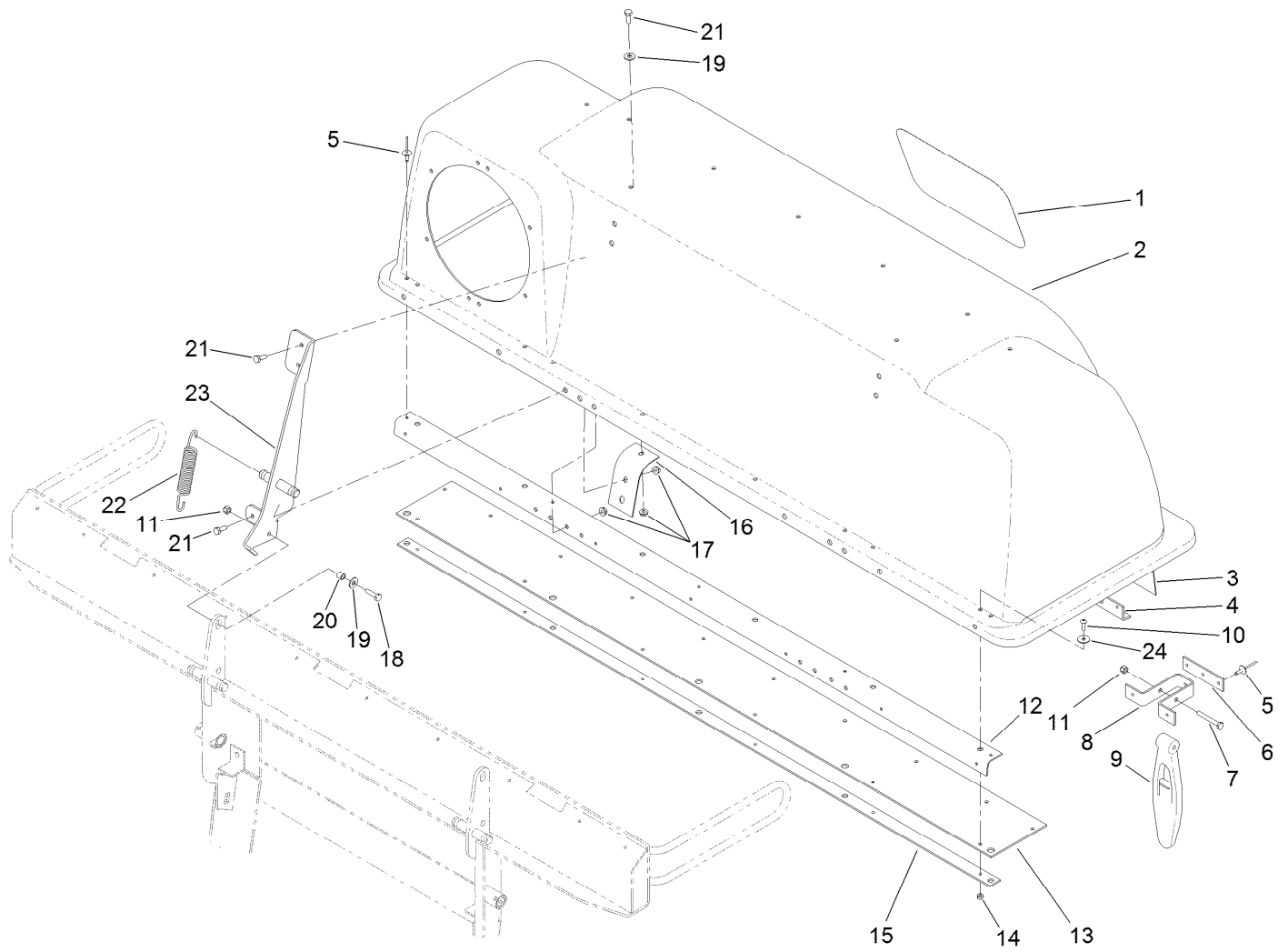
Bag and Frame Assembly



Bag and Frame Assembly (continued)

<i>Ref.</i>	<i>Part Number</i>	<i>Qty.</i>	<i>Description</i>	<i>Ref.</i>	<i>Part Number</i>	<i>Qty.</i>	<i>Description</i>
1	116-0754	3	Bag And Frame ASM	4	125-4420-03	1	Adapter
1:1	1-653529-03	1	Frame-Bag	5	99-5107	2	Nut-Lock
1:2	114973-03	1	Hanger-Bag	6	114-8419	2	Screw-HHF
1:3	114974-03	1	Clamp	7	1-513658	2	Bumper
1:4	3230-1	2	Bolt-CARR	8	3274-55	8	Screw-HSBH
1:5	3296-29	2	Nut-Lock, NI	9	103-5166	2	Bag Support ASM
1:6	116-0757	1	Bag	9:1	1-523420	1	Bumper
1:7	1-653566	1	Handle-Bag	9:2	103-5124-03	1	Support-Bag
1:8	3229-1	2	Bolt-CARR	9:3	1-653404	1	Catch
1:9	1-653036	2	Washer	9:4	3290-148	2	Nut-HF
1:10	3296-42	2	Nut-Lock, NI	9:5	32128-33	1	Nut-HF
2	116-0458	2	Pin-Mount, Bagger	9:6	3290-500	2	Screw-PPH
3	109-8706-03	1	Frame-Triple Bagger				

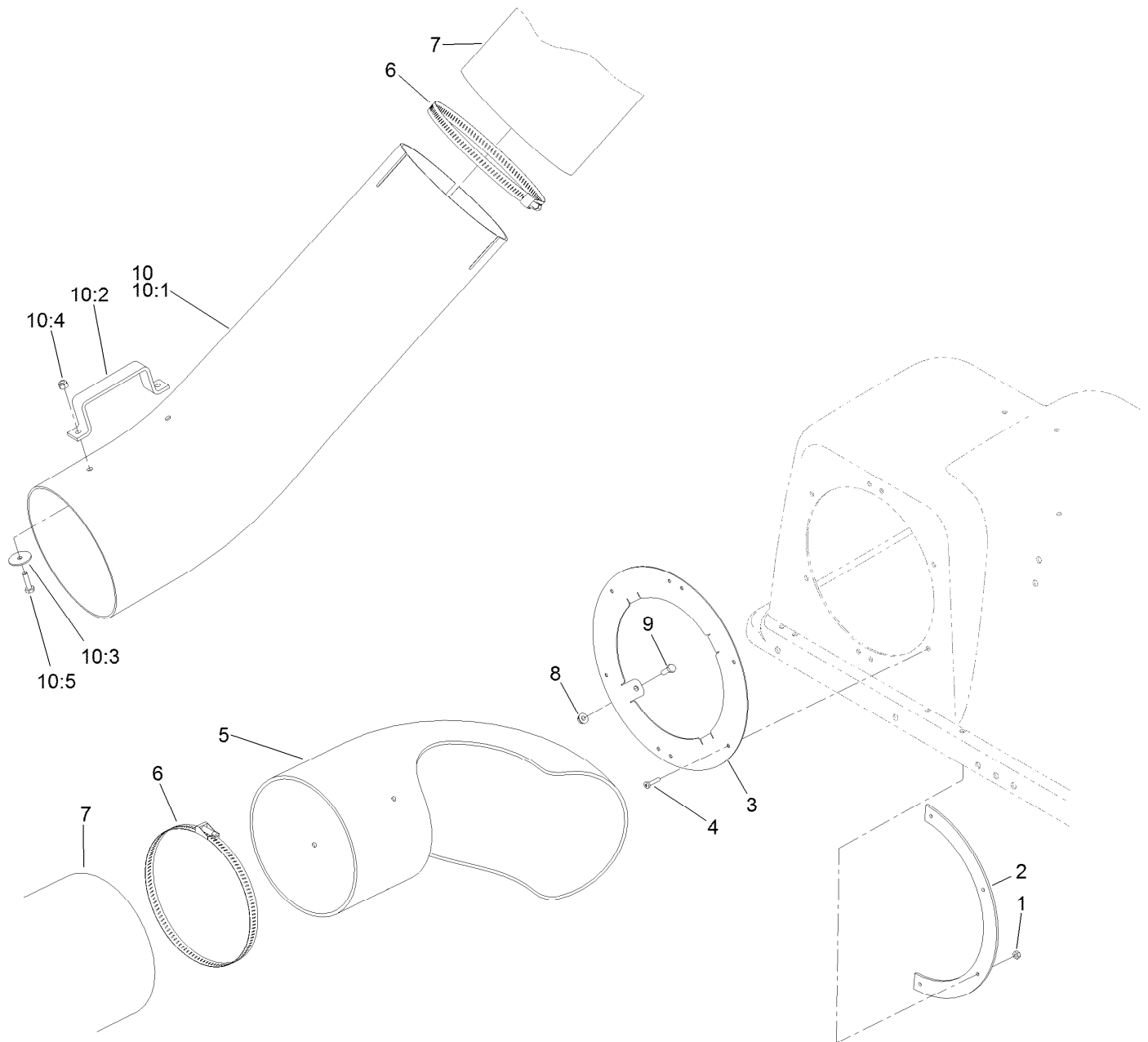
Hood Assembly



Hood Assembly (continued)

<i>Ref.</i>	<i>Part Number</i>	<i>Qty.</i>	<i>Description</i>	<i>Ref.</i>	<i>Part Number</i>	<i>Qty.</i>	<i>Description</i>
1	67-7310	1	Decal	14	3296-2	6	Nut-Lock, NI
2	110-3927	1	Hood-Bagger, Triple	15	103-0452-03	1	Plate-Backing
3	103-0440	1	Screen-Bagger	16	103-0391	2	Reinforcement-Hood, Bagger
4	103-0380-03	1	Support-Screen	17	32128-33	10	Nut-HF
5	114439	39	Rivet-Blind	18	321-6	2	Screw-HH
6	103-0376	2	Plate-Latch, Reinforcement	19	3256-2	4	Washer-Flat
7	321-11	2	Screw-HH	20	1-633545	2	Spacer
8	103-0379	2	Bracket-Mount	21	321-4	10	Screw-HH
9	1-653403	2	Latch	22	1-653544	2	Spring-Extension
10	3250-27	6	Screw-PPH	23	109-8351-03	2	Hinge
11	3296-42	4	Nut-Lock, NI	24	3256-61	21	Washer-Flat
12	103-0382-03	1	Stiffener-Bagger, Top				
13	103-0451	1	Seal-Hinge				

Lower Tube and Upper Tube Assembly



Lower Tube and Upper Tube Assembly (continued)

<i>Ref.</i>	<i>Part Number</i>	<i>Qty.</i>	<i>Description</i>	<i>Ref.</i>	<i>Part Number</i>	<i>Qty.</i>	<i>Description</i>
1	3296-2	8	Nut-Lock, NI	9	321-4	4	Screw-HH
2	103-0378	2	Clamp-Seal	10	132-7997	1	Lower Tube ASM
3	132-7975-03	1	Bracket-Nozzle, Bagger	10:1	132-8007	1	Tube-Lower
4	3250-27	8	Screw-PPH	10:2	1-353005-03	1	Handle
5	125-4433	1	Tube-Upper	10:3	3256-55	2	Washer-Flat
6	VAC11400	2	Clamp	10:4	3296-42	2	Nut-Lock, NI
7	125-4432	1	Tube-Flexible	10:5	321-6	2	Screw-HH
8	32128-33	4	Nut-HF				

Notes:

Notes:



Count on it.