



**Count on it.**

**Parts Catalog**

**Topdresser 1800**  
**Workman® Heavy-Duty Utility Vehicle**

Model No. 44225—Serial No. 403200001 and Up



# Ordering Replacement Parts

To order replacement parts, please supply the part number, the quantity, and the description of each part desired.

## Understanding Reference Numbers

Each identified part in an illustration has a reference number. The reference number for a part also appears in the parts list, along with other information about the part.

This catalog uses two special reference number formats, one to indicate parts in a service assembly and another to indicate the quantity of a given part in an illustration.

## Service Assembly Reference Numbers

Parts in service assemblies have reference numbers in the form a:b. The a represents the reference number of the entire service assembly and the b represents a sequential number unique to each part within the service assembly.

For example, a wheel assembly might be identified by reference number 6, the tire by 6:1, the valve by 6:2, and the wheel by 6:3. When you order the assembly identified by reference number 6, you receive all parts identified by reference numbers 6:1, 6:2, and 6:3. However, you may also order any part individually. Reference numbers of this type appear in illustration and in parts lists.

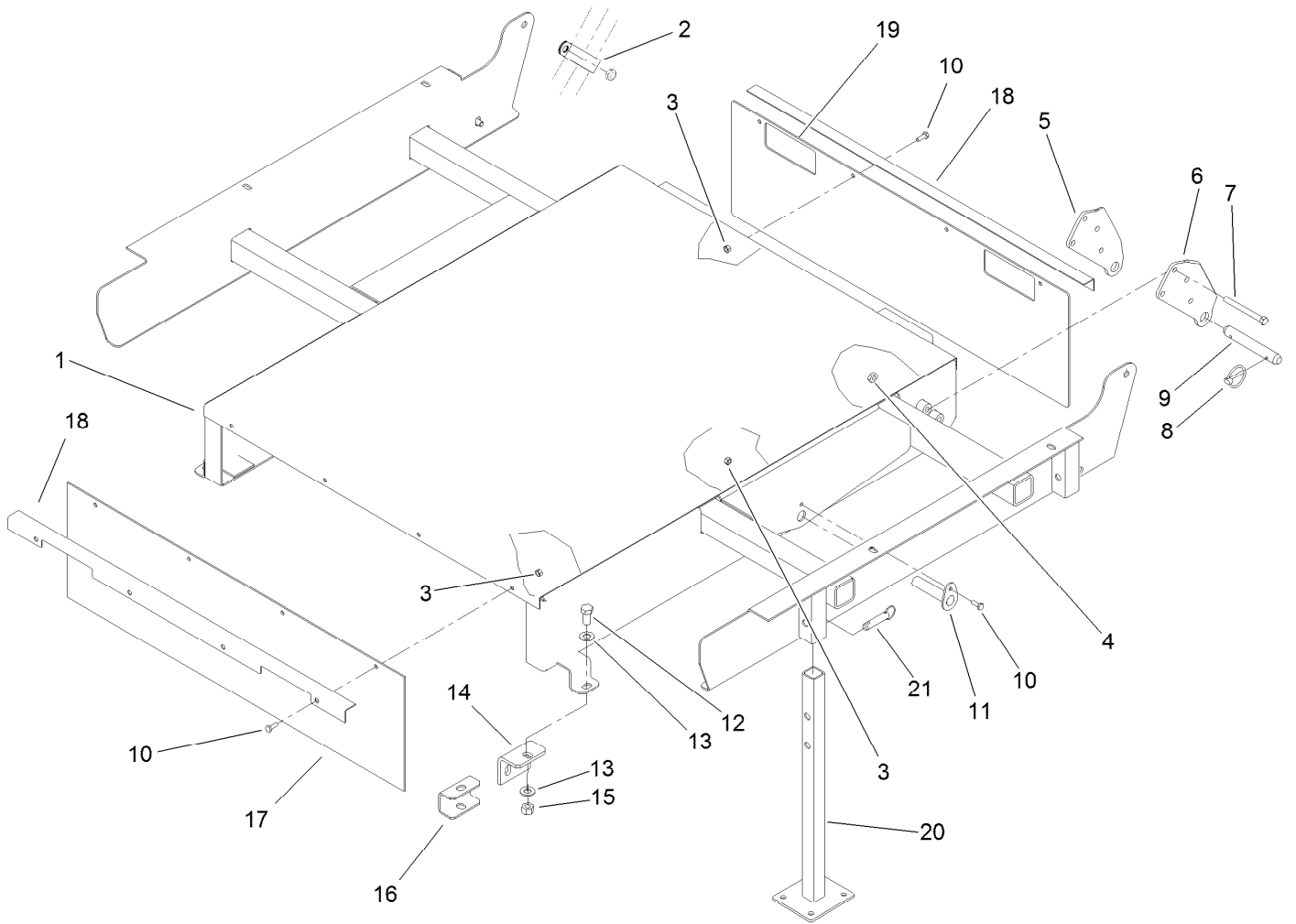
## Reference Numbers Indicating Quantity

In an illustration, if a reference number indicates more than one part, the reference number has the form nX y. The n represents the quantity of the part, the X is the multiplication symbol, and the y represents the reference number.

For example, in an illustration, the reference number 2X 37 means that two of the parts identified by reference number 37 are indicated.

# Contents

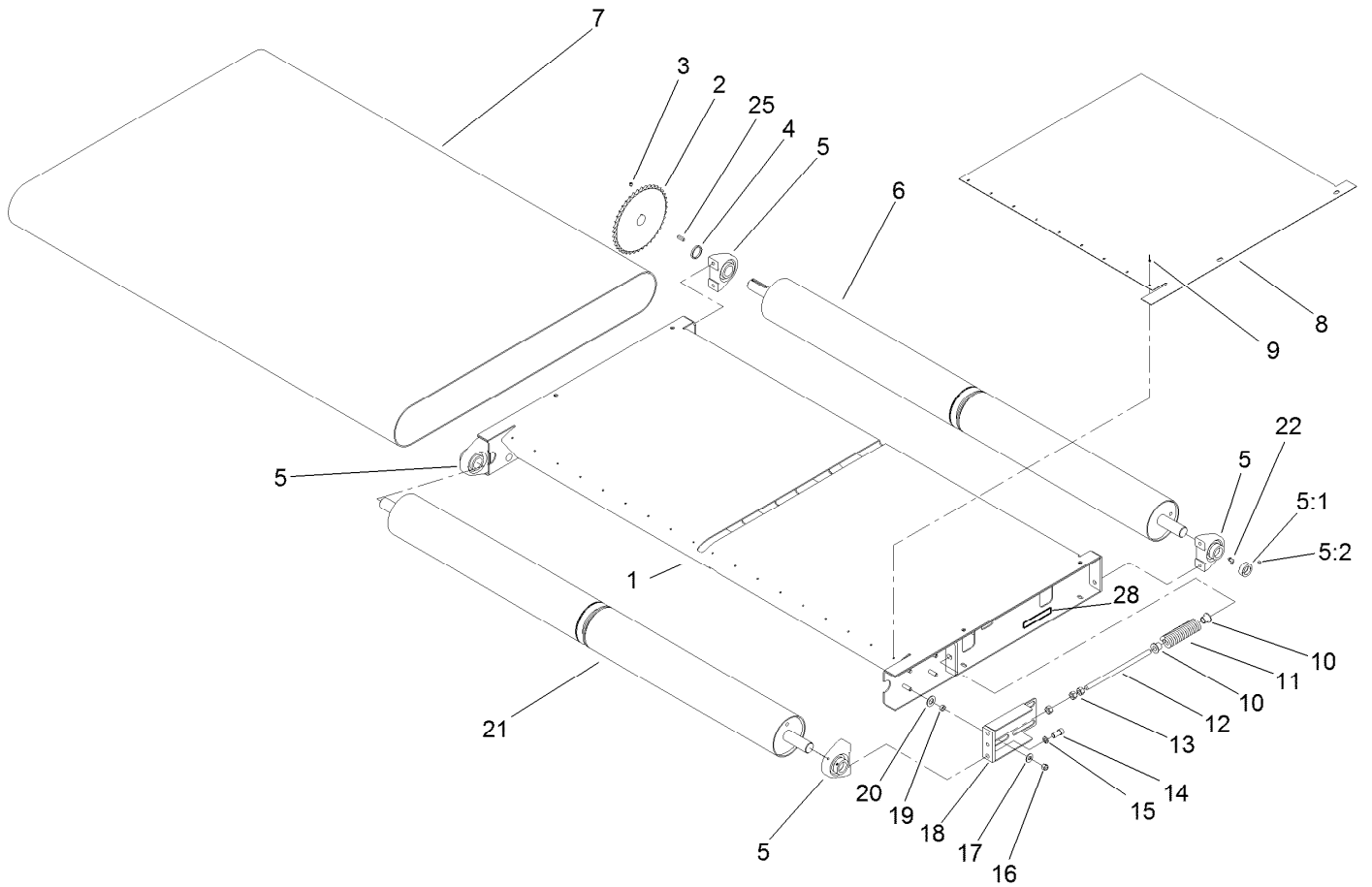
Base Assembly . . . . .	4
Slider Bed and Roller Assembly . . . . .	5
Gate Assembly . . . . .	6
Brush and Motor Assembly . . . . .	7
Hopper Assembly . . . . .	9
Gate Slide and Brush Guard Assembly . . . . .	10
Chain, Sprocket and Guard Assembly . . . . .	11



## Base Assembly

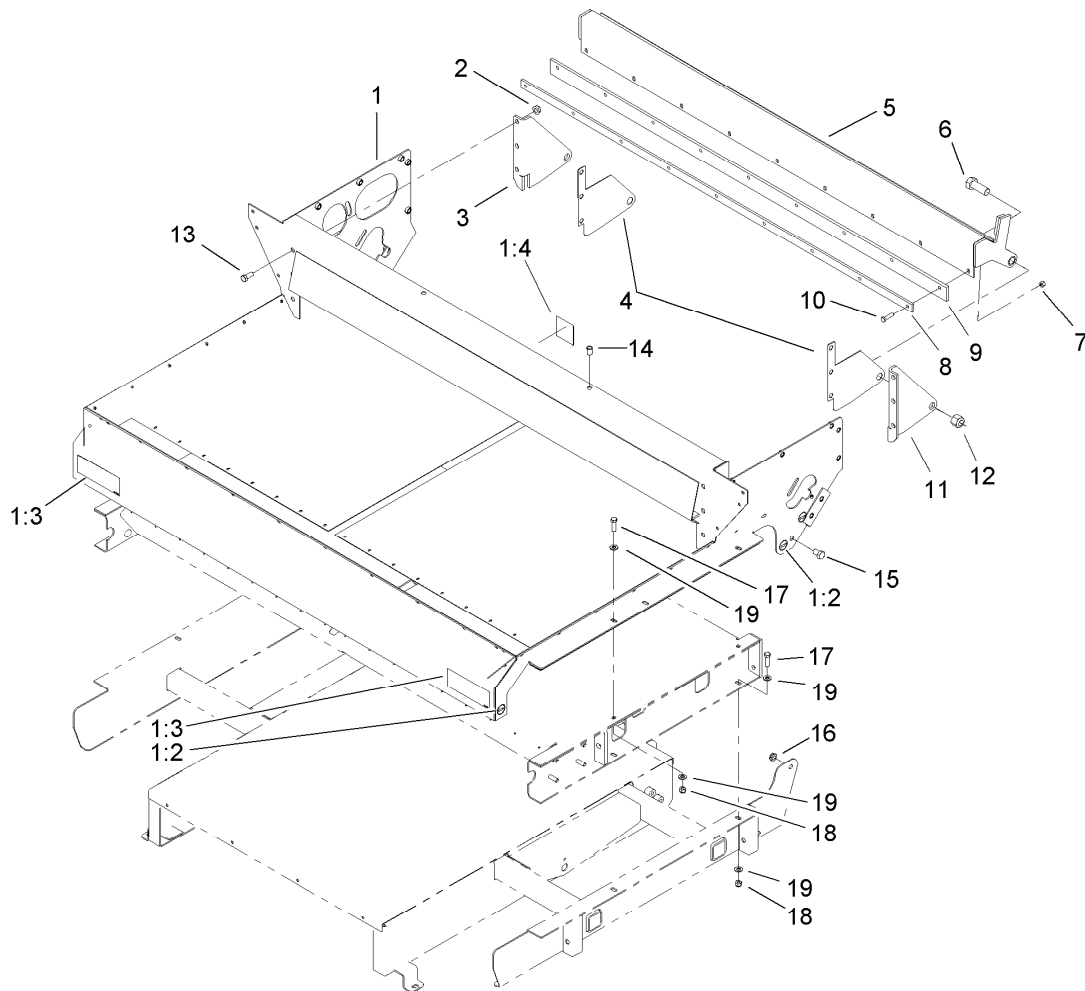
Ref.	Part Number	Qty.	Description	Ref.	Part Number	Qty.	Description
1	106-7857-01	1	Base ASM	12	325-4	4	Screw-HH
2	100-1424	1	Clamp-R	13	3256-26	8	Washer-Flat
3	3296-42	10	Nut-Lock, NI	14	92-2667-03	2	Bracket-Mount
4	3296-44	8	Nut-Lock, NI	15	3296-25	4	Nut-Lock, NI
5	93-9721-03	2	Bracket-Pivot, Long (RH)	16	92-4576	2	Spacer-Mount
6	93-9720-03	2	Bracket-Pivot, Long (LH)	17	100-1423	1	Cover-Rubber
7	323-42	8	Screw-HH	18	106-7859-01	2	Clamp-Rubber
8	92-1298	4	Pin-Lynch	19	106-7860	1	Cover-Rubber
9	92-1233	2	Pin-Clevis	20	105-9482-03	4	Jack Stand ASM ●
10	321-4	10	Screw-HH	21	100-4523	4	Pin-Hitch ●
11	92-4459	2	Pin-Cylinder				

● Optional Equipment



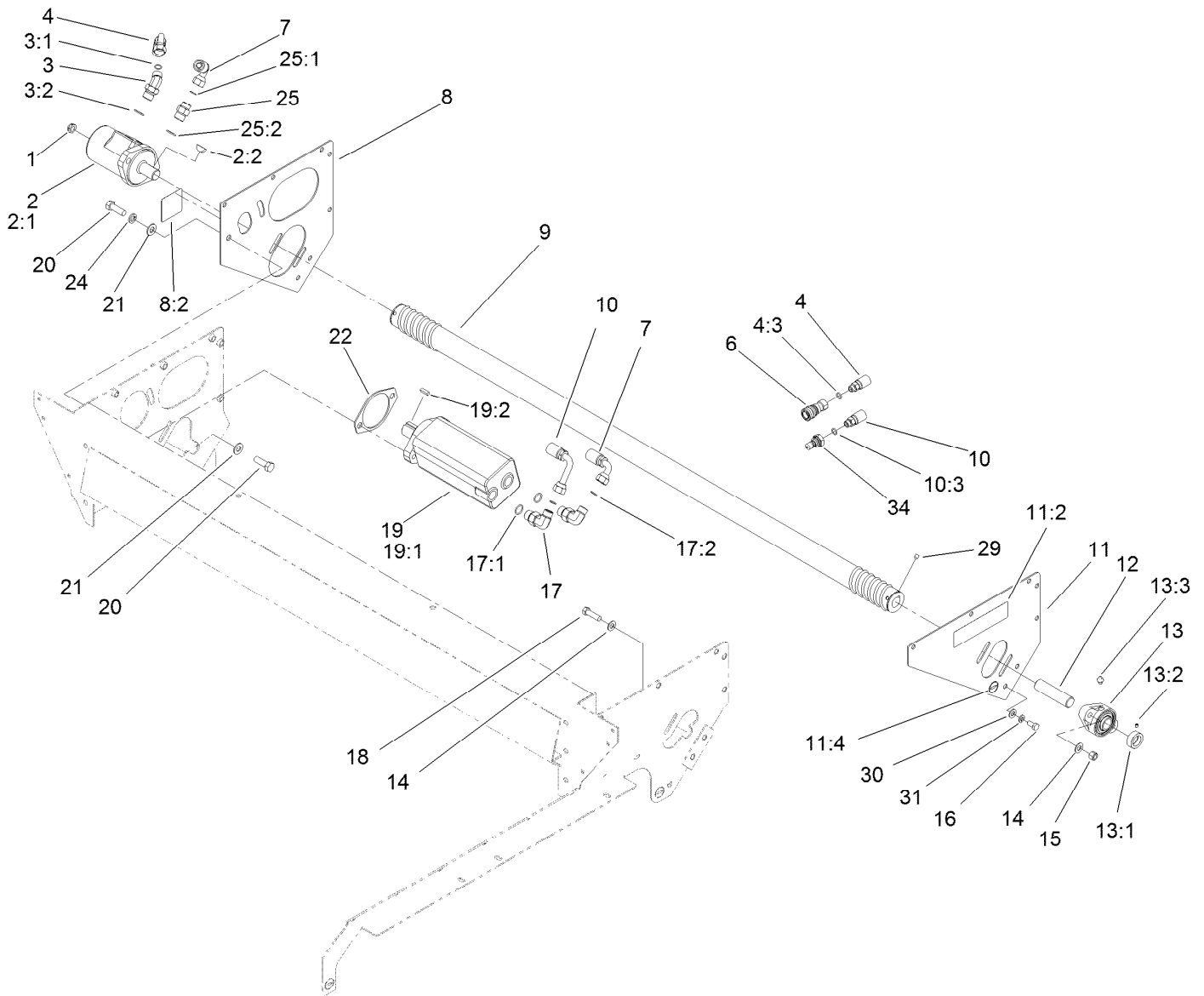
## Slider Bed and Roller Assembly

Ref.	Part Number	Qty.	Description	Ref.	Part Number	Qty.	Description
1	99-0038-01	1	Frame-Bed, Slider	12	99-0118	2	Pin-Spring
2	99-0166-03	1	Sprocket-Driven	13	3217-9	6	Nut-HH
3	3246-3	2	Screw-HSH	14	100-1438	8	Screw-Socket Head, Torx
4	99-0017	1	Spacer-Sprocket	15	3253-6	8	Washer-Lock
5	99-0158	4	Bearing-Base, Tapped	16	3296-39	8	Nut-Lock, NI
5:1	251-246	1	Collar W/Set Screws	17	3256-4	8	Washer-Flat
5:2	106-9662	1	Screw-Set, HSH	18	99-0050-01	2	Spring Plate ASM
6	99-0046	1	Roller-Rear	19	99-0052	8	Washer-Slide
7	100-1425	1	Belt Kit	20	100-1401	8	Spacer-Slide, Spring
8	99-0047	2	Plate-Wear	21	99-0044	1	Roller-Front
9	3269-28	18	Rivet-Pop	22	302-60	4	Fitting-Grease
10	100-1414	4	Holder-Spring	25	10-7070	1	Key-Square
11	99-0163	2	Spring-Compression	28	133-8061	1	Decal-Warning



## Gate Assembly

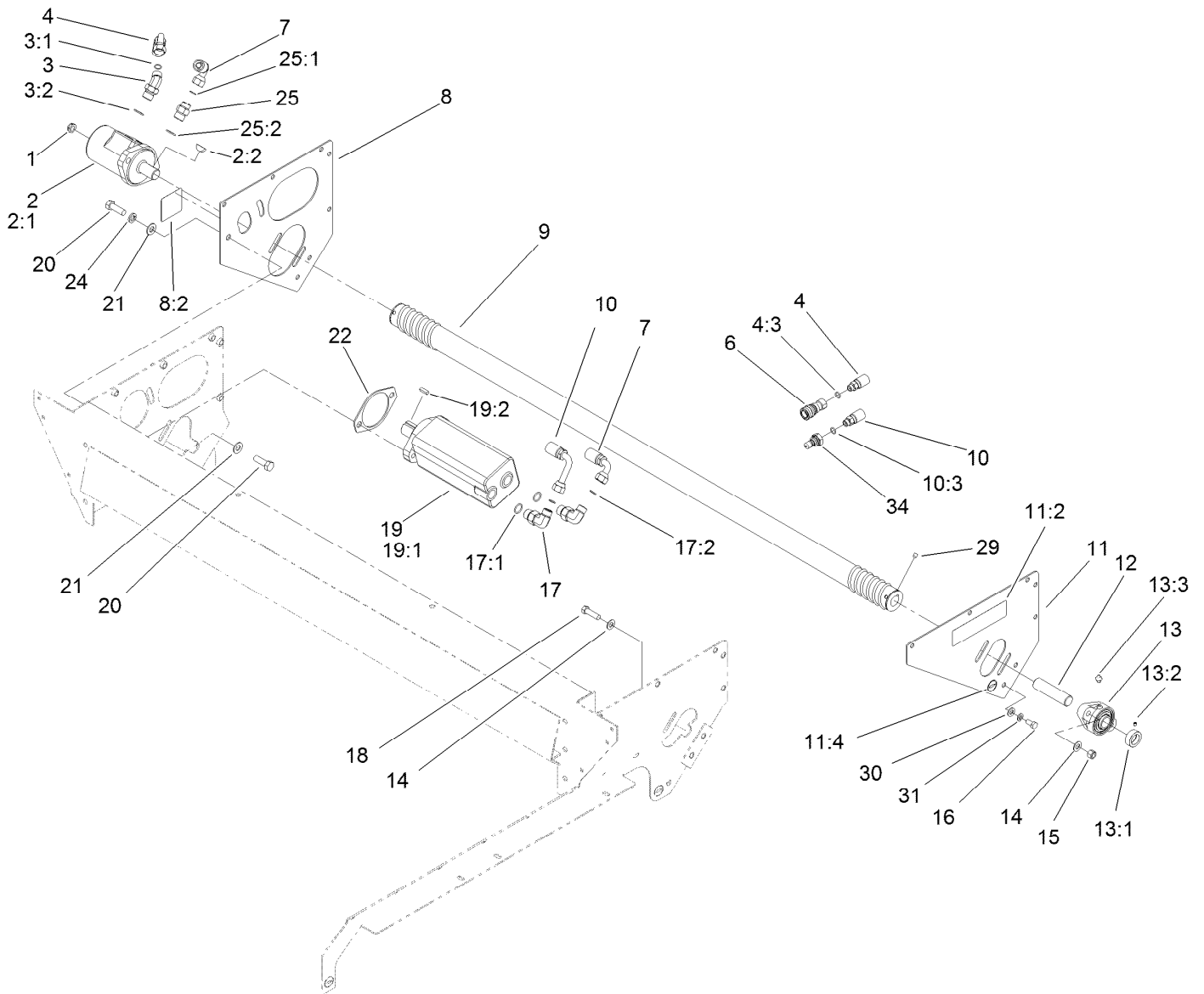
Ref.	Part Number	Qty.	Description
1	100-1435	1	Hopper Frame ASM
1:2	58-6520	4	Decal-Grease
1:3	93-9092	2	Decal-Warning
1:4	105-4586	1	Decal-Shield
2	32128-37	6	Nut-HF
3	99-0079-01	1	Bracket-Gate Pivot, RH
4	99-0117	2	Wareplate-Gate
5	99-0068-01	1	Gate ASM
6	328-24	2	Screw-HH
7	3296-29	9	Nut-Lock, NI
8	99-0089-01	1	Plate-Backing
9	99-0074	1	Seal-Gate
10	322-6	9	Screw-HH
11	99-0078-01	1	Bracket-Gate Pivot, LH
12	3296-51	2	Nut-Lock, NI
13	324-4	6	Screw-HH
14	32148-9	2	Nut-Clinch
15	325-2	2	Screw-HH
16	3296-45	2	Nut-Hex
17	323-7	8	Screw-HH
18	3296-39	8	Nut-Lock, NI
19	3256-24	16	Washer-Flat



## Brush and Motor Assembly

Ref.	Part Number	Qty.	Description	Ref.	Part Number	Qty.	Description
1	3296-23	2	Nut-Lock, NI	11:4	58-6520	1	Decal-Grease
2	99-0156	1	HYD Motor ASM	12	99-0041	1	Shaft-Brush
2:1	100-1446	1	Seal Kit ●	13	99-0160	1	Bearing
2:2	3257-8	1	Key-Woodruff	13:1	251-249	1	Collar W/Set Screws
3	340-89	1	Fitting-HYD, 45 DEG	13:2	3245-35	1	Screw-Set, HSH
3:1	237-30	1	O-Ring	13:3	302-2	1	Fitting-Grease
3:2	237-80	1	O-Ring	14	3256-25	4	Washer-Flat
4	110-1962	1	HYD Hose ASM	15	3296-48	2	Nut-Lock, NI
4:3	237-42	1	O-Ring	16	323-4	4	Screw-HH
6	106-7968	1	Coupler-Quick, Female	17	340-105	2	Fitting-Elbow, 90 DEG
7	99-0177	1	Hose-HYD	17:1	237-80	1	O-Ring
8	100-1431	1	RH Motor Brace ASM	17:2	237-30	1	O-Ring
8:2	105-4586	1	Decal-Shield	18	324-6	2	Screw-HH
9	99-0162	1	Brush	19	99-0155	1	HYD Motor Conveyor ASM
10	110-1963	1	HYD Hose ASM	19:1	56-6890	1	Seal Kit ●
10:3	237-42	1	O-Ring	19:2	10-7070	1	Key-Square
11	100-1430	1	LH Motor Brace ASM	20	325-7	4	Screw-HH
11:2	106-7750	1	Decal-Danger	21	3256-26	4	Washer-Flat

● Not illustrated



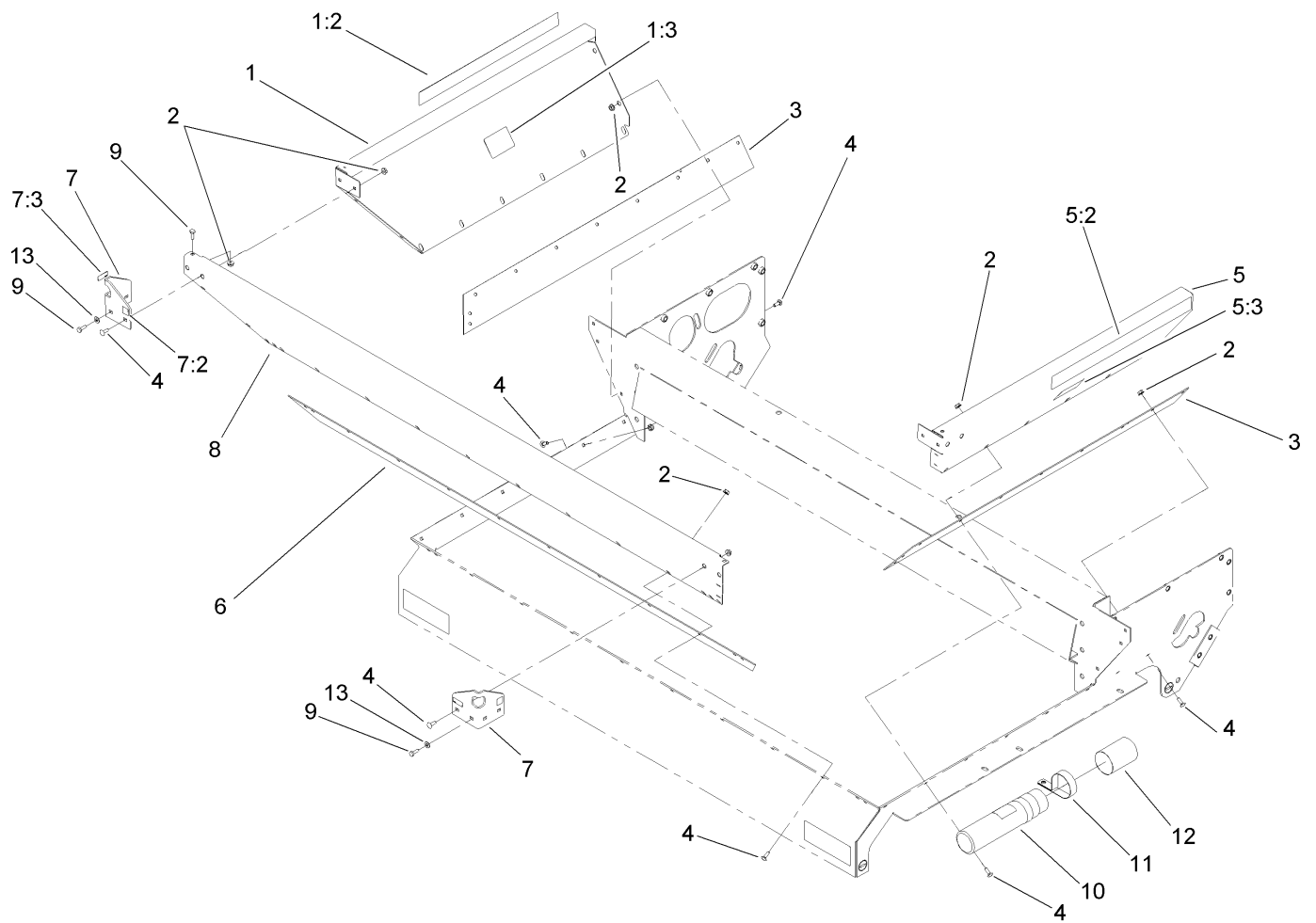
## Brush and Motor Assembly (continued)

<i>Ref.</i>	<i>Part Number</i>	<i>Qty.</i>	<i>Description</i>
22	99-0116	1	Plate-Spacer
24	3253-7	2	Washer-Lock
25	340-6	1	Fitting-Straight
25:1	237-30	1	O-Ring
25:2	237-80	1	O-Ring

<i>Ref.</i>	<i>Part Number</i>	<i>Qty.</i>	<i>Description</i>
29	3246-3	4	Screw-HSH
30	3256-24	4	Washer-Flat
31	3253-21	4	Washer-Lock
34	106-7969	1	Coupler-Quick, Male

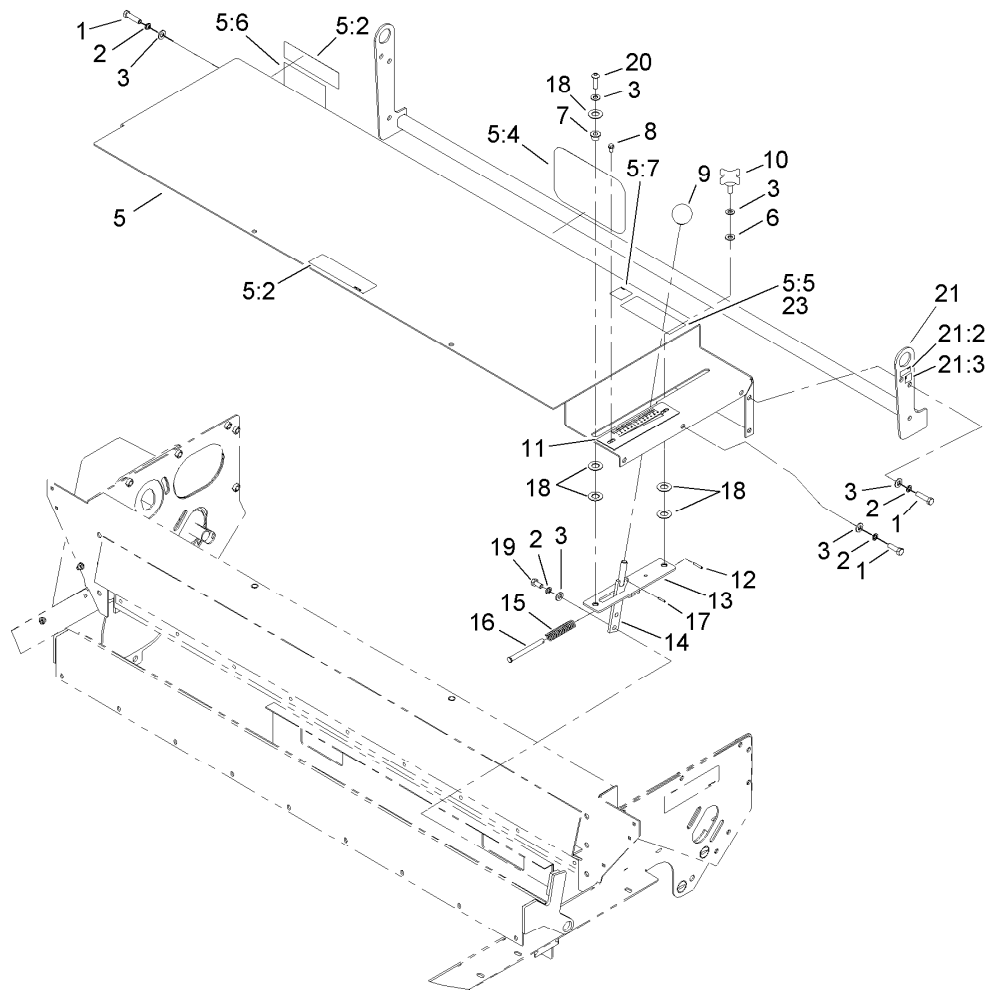
● Not illustrated





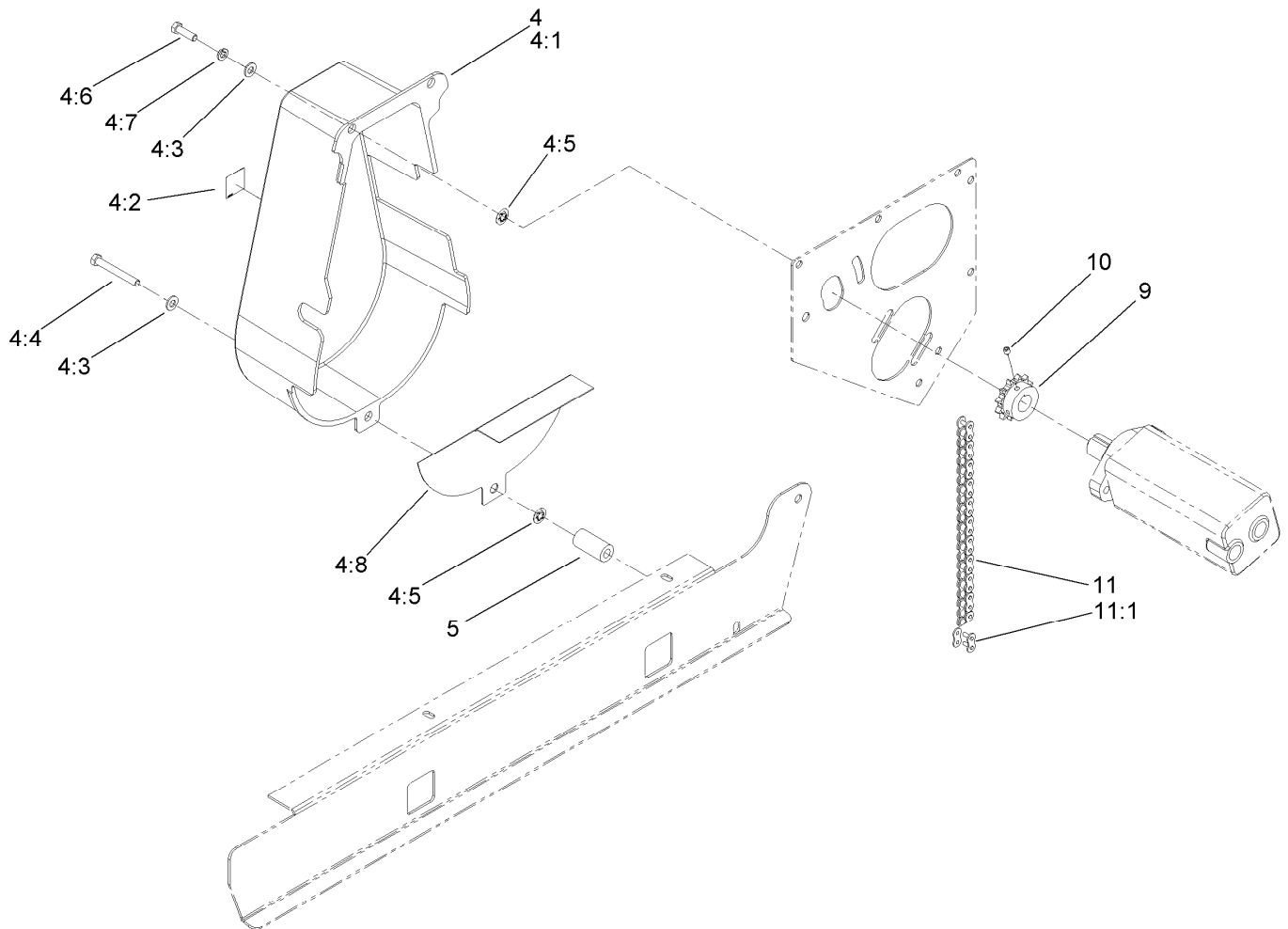
## Hopper Assembly

<i>Ref.</i>	<i>Part Number</i>	<i>Qty.</i>	<i>Description</i>
1	100-1434	1	RH Hopper Panel ASM
1:2	99-0013	1	Decal
1:3	94-1235	1	Decal-Capacity
2	32128-33	44	Nut-HF
3	99-0142	2	Seal-Sand, Side
4	3229-25	38	Screw-CARR
5	100-1433	1	LH Hopper Panel ASM
5:2	99-0013	1	Decal
5:3	94-1235	1	Decal-Capacity
6	99-0143	1	Seal-Sand, Front
7	100-1428	2	Front Lift Eye ASM
7:2	93-9084	1	Decal-Point, Lift
7:3	93-9529	1	Decal-Value, Kg
8	99-0020	1	Panel-Hopper, Front
9	321-4	6	Screw-HH
10	104-7050	1	Tube-Manual
11	2412-133	2	Clamp-R
12	104-7048	1	Cap-Housing
13	3256-22	4	Washer-Flat



## Gate Slide and Brush Guard Assembly

<i>Ref.</i>	<i>Part Number</i>	<i>Qty.</i>	<i>Description</i>	<i>Ref.</i>	<i>Part Number</i>	<i>Qty.</i>	<i>Description</i>
1	323-7	10	Screw-HH	11	100-1416	1	Scale-Gate
2	3253-21	12	Washer-Lock	12	32121-45	1	Pin-Spring
3	3256-24	13	Washer-Flat	13	99-0073-03	1	Slide Block Plate ASM
5	100-1432	1	Brush Guard ASM	14	100-1406-03	1	Gate Handle ASM
5:2	106-7750	2	Decal-Danger	15	100-1448	1	Spring-Gate
5:4	92-1242	1	Decal	16	100-1413	1	Pin-Clevis
5:5	105-0707	1	Decal-Warning	17	32121-40	1	Pin-Spring
5:6	105-0708	1	Decal-Danger	18	99-0052	5	Washer-Slide
5:7	98-3114	1	Decal-Warning	19	323-4	2	Screw-HH
6	95-4896	1	Washer-Nylon	20	3274-63	1	Screw-HSBH
7	256-259	1	Bushing-Flange	21	106-0281	1	Bumper ASM
8	93-6083	2	Screw-HWH	21:2	93-9529	2	Decal-Value, Kg
9	233-48	1	Knob	21:3	93-9084	2	Decal-Point, Lift
10	100-1449	1	Knob	23	105-0698	1	Decal-Caution



## Chain, Sprocket and Guard Assembly

<i>Ref.</i>	<i>Part Number</i>	<i>Qty.</i>	<i>Description</i>
4	119-0743	1	Chain Guard ASM
4:1	99-0171	1	Guard-Chain (Plastic)
4:2	98-3114	1	Decal-Warning
4:3	3256-24	3	Washer-Flat
4:4	99-8664	1	Screw-HH
4:5	107-3154	3	Nut-Push
4:6	323-7	2	Screw-HH
4:7	3253-21	2	Washer-Lock
4:8	106-2326-03	1	Guard-Finger
5	100-1442	1	Spacer-Guard
9	99-0165-03	1	Sprocket-Drive
10	3246-3	2	Screw-HSH
11	99-0164	1	Chain-Roller
11:1	2710-16	1	Link-Chain



**Count on it.**