



# Belt Kit

## SGR-6 Stump Grinder

Model No. 138-3121

Model No. 138-3125

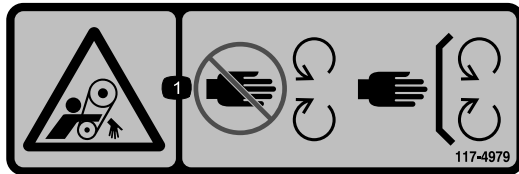
### Installation Instructions

## Safety

### Safety and Instructional Decals



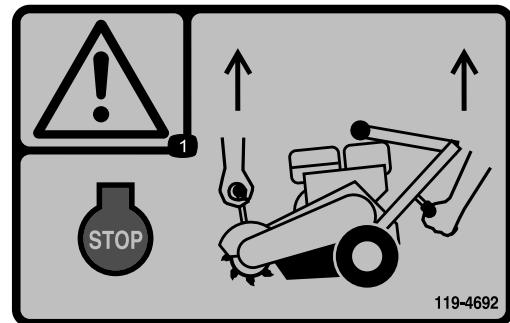
Safety decals and instructions are easily visible to the operator and are located near any area of potential danger. Replace any decal that is damaged or missing.



decal117-4979

117-4979

1. Rotating belt—keep guard in place.



decal119-4692

119-4692

1. Warning—shut off the engine; use both hand holds to lift the grinder.



# Installation

## Loose Parts

Use the chart below to verify that all parts have been shipped.

Procedure	Description	Qty.	Use
<b>1</b>	No parts required	–	Prepare the machine.
<b>2</b>	No parts required	–	Remove the existing belt and cutter wheel.
<b>3</b>	Wheel Tooth Kit Cutter wheel	1 1	Install the wheel teeth.
<b>4</b>	Bearing assembly Bolt (3/8 x 1-1/2 inches) Washer (0.40 x 0.81 x 0.11 inches) Locknut (3/8 inch) Guard plate Flange bolt (5/16 x 3/4 inch) Carriage bolt (5/16 x 3/4 inch) Locknut (5/16 inch) Front pulley Square key Washer (0.27 x 0.89 x 0.09 inches) Bolt (1/4 x 3/4 inch) Clutch pulley Washer (0.76 x 1.26 x 0.07 inches) Washer (0.32 x 1.12 x 0.18 inches) Washer (0.31 x 0.78 x 0.07 inches) Bolt (5/16 x 1-1/8 inch) Belt Belt guard Bolt (3/8 x 1 inch) Washer (0.38 x 0.75 x 0.08 inches)	2 4 8 4 1 2 1 3 1 1 1 1 1 2 1 1 1 1 1 2 2	Install the cutter wheel and belt.
<b>5</b>	Decal	1	Install the decal (Model 138-3125 only).

# 1

## Preparing the Machine

No Parts Required

### Procedure

1. Park the machine on a level surface.
2. Engage the parking brake.
3. Shut off the engine.
4. Disconnect the spark plug wire from the spark plug.

# 2

## Removing the Existing Belt and Cutter Wheel

No Parts Required

### Procedure

**Note:** Discard all removed parts unless indicated otherwise.

1. Remove the 2 bolts, 2 washers, and belt guard (Figure 1).

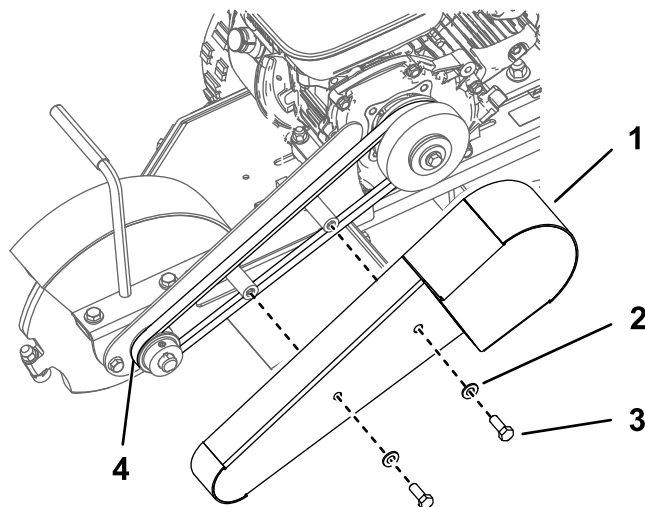


Figure 1

- |   |                          |
|---|--------------------------|
| 1. Belt guard                           | 3. Bolt—3/8 x 1 inch (2) |
| 2. Washer—0.38 x 0.75 x 0.08 inches (2) | 4. Belt                  |

2. Loosen, or remove and retain, the 4 carriage bolts, 4 washers, and 4 locknuts securing the engine to the frame (Figure 2).

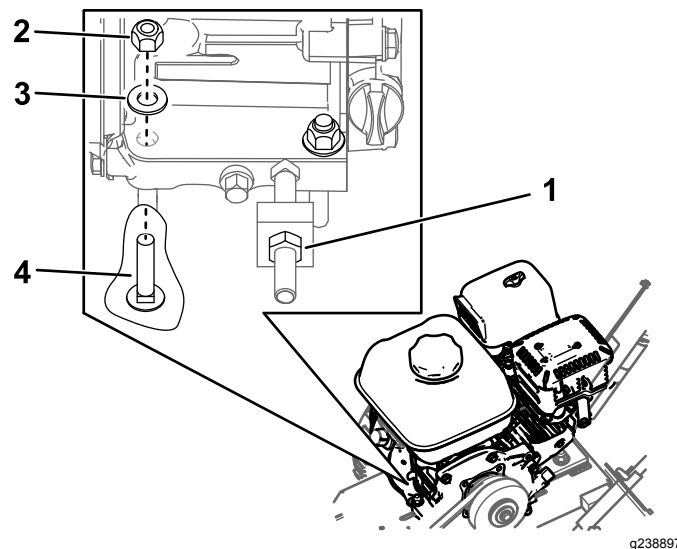


Figure 2

Front fasteners shown

- |                          |  |
|--------------------------|--|
| 1. Jam nut               | 3. Washer—0.38 x 0.73 x 0.07 inches (4)  |
| 2. Locknut—5/16 inch (4) | 4. Carriage bolt—5/16 x 1-1/2 inches (4) |

3. Loosen the jam nut on the tensioner bolt (Figure 2).
4. Remove the belt (Figure 1).
5. Remove the clutch pulley (Figure 3).

**Note:** Remove and retain the square key for later installation.

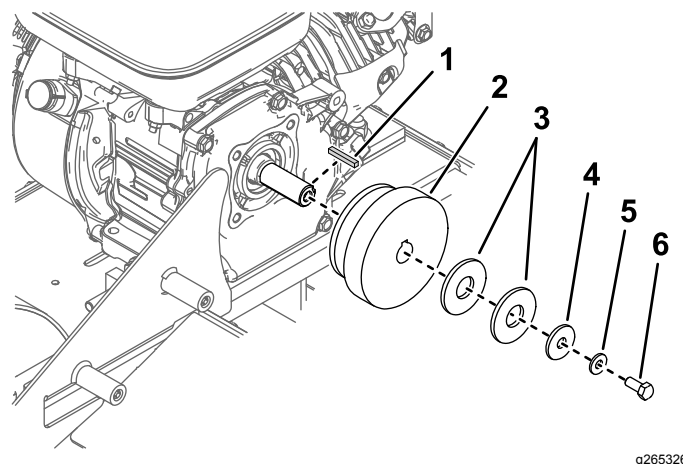


Figure 3

- |                                       |                                       |
|---------------------------------------|---------------------------------------|
| 1. Square key                         | 4. Washer (0.39 x 1.25 x 0.12 inches) |
| 2. Clutch pulley                      | 5. Washer (0.31 x 0.75 x 0.08 inches) |
| 3. Washer (0.81 x 2.00 x 0.15 inches) | 6. Bolt (5/16 x 3/4 inch)             |

6. Remove the front pulley (Figure 4).

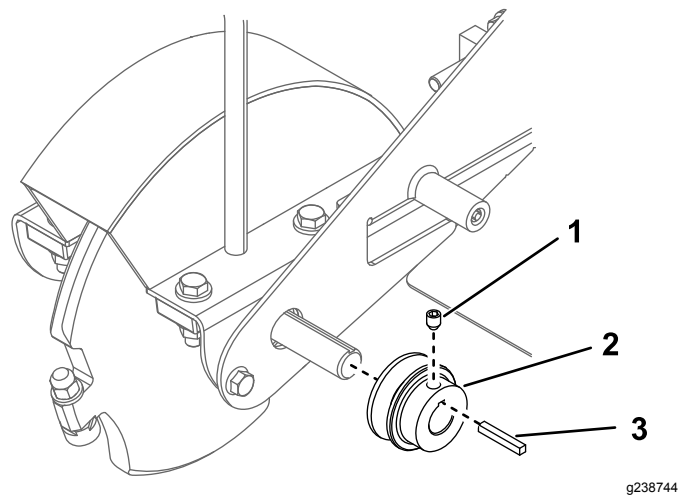


Figure 4

- 1. Set screw
- 2. Front pulley
- 3. Square key

7. Remove the guard plate (Figure 5).

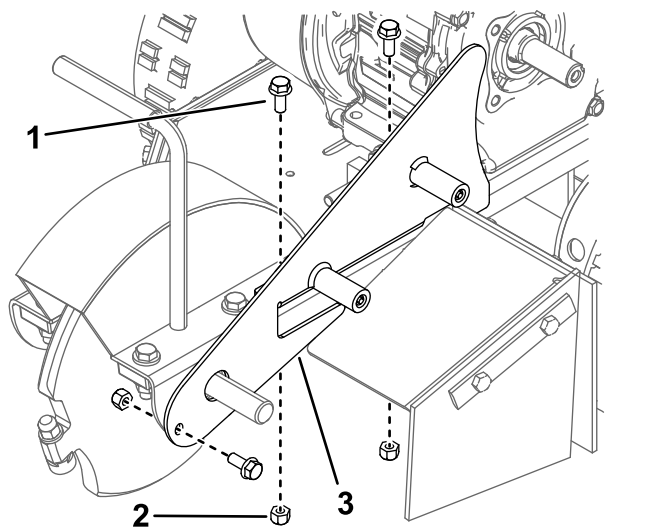


Figure 5

- 1. Flange bolt—5/16 x 3/4 inch (3)
- 2. Locknut—5/16 inch (3)
- 3. Guard plate

8. Remove the cutter wheel (Figure 6).

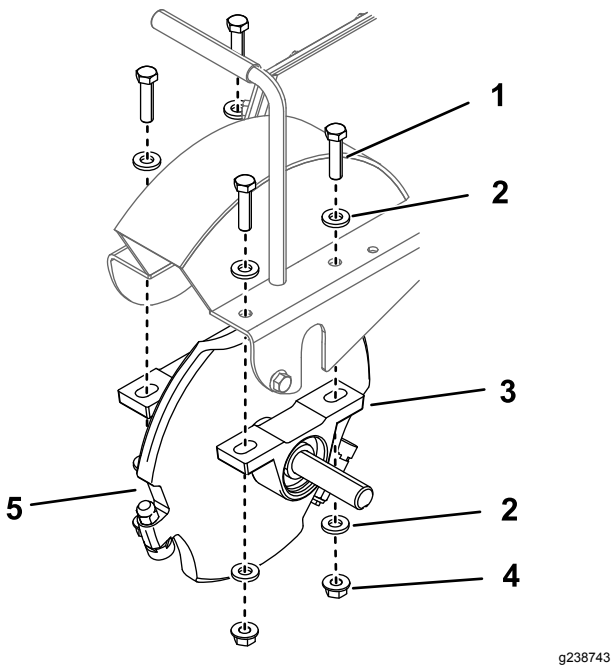


Figure 6

- 1. Bolt—3/8 x 1-1/2 inches (4)
- 2. Washer—0.40 x 0.81 x 0.11 inches (8)
- 3. Bearing assembly (2)
- 4. Locknut—3/8 inch (4)
- 5. Cutter wheel

# 3

## Installing the Wheel Teeth

Parts needed for this procedure:

1	Wheel Tooth Kit
1	Cutter wheel

## Procedure

Refer to the *Installation Instructions* for the kit to install the wheel teeth to the cutter wheel.

# 4

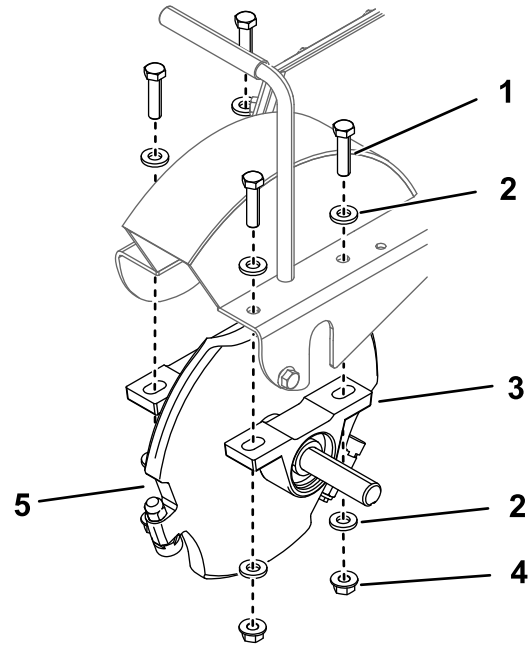
## Installing the Cutter Wheel and Belt

### Parts needed for this procedure:

2	Bearing assembly
4	Bolt (3/8 x 1-1/2 inches)
8	Washer (0.40 x 0.81 x 0.11 inches)
4	Locknut (3/8 inch)
1	Guard plate
2	Flange bolt (5/16 x 3/4 inch)
1	Carriage bolt (5/16 x 3/4 inch)
3	Locknut (5/16 inch)
1	Front pulley
1	Square key
1	Washer (0.27 x 0.89 x 0.09 inches)
1	Bolt (1/4 x 3/4 inch)
1	Clutch pulley
2	Washer (0.76 x 1.26 x 0.07 inches)
1	Washer (0.32 x 1.12 x 0.18 inches)
1	Washer (0.31 x 0.78 x 0.07 inches)
1	Bolt (5/16 x 1-1/8 inch)
1	Belt
1	Belt guard
2	Bolt (3/8 x 1 inch)
2	Washer (0.38 x 0.75 x 0.08 inches)

## Procedure

1. Slide a bearing assembly onto the shaft on both sides of the cutter wheel and follow the instructions provided with the bearing assemblies ([Figure 7](#)).

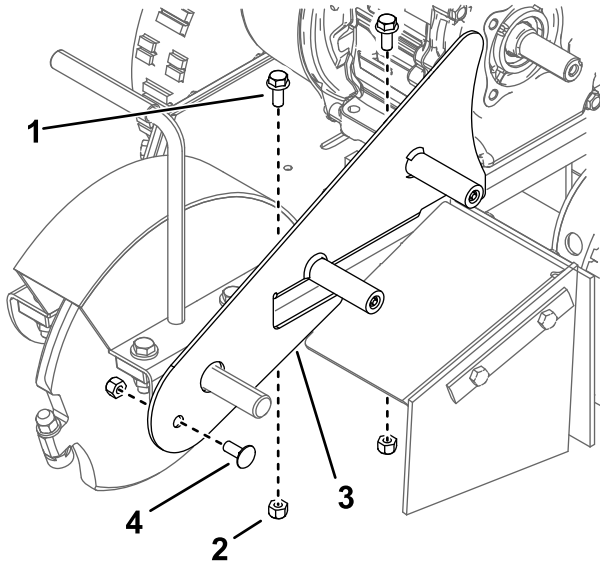


**Figure 7**

1. Bolt—3/8 x 1-1/2 inches (4)
2. Washer—0.40 x 0.81 x 0.11 inches (8)
3. Bearing assembly (2)
4. Locknut—3/8 inch (4)
5. Cutter wheel

2. Secure the bearings to the frame of the machine using 4 bolts (3/8 x 1-1/2 inches), 8 washers (0.40 x 0.81 x 0.11 inches), and 4 locknuts (3/8 inch) as shown in [Figure 7](#). Torque to 60 to 76 N·m (44 to 56 ft-lb).

3. Install the guard plate using 2 flange bolts (5/16 x 3/4 inch), 1 carriage bolt (5/16 x 3/4 inch) and 3 locknuts (5/16 inch) as shown in [Figure 8](#).

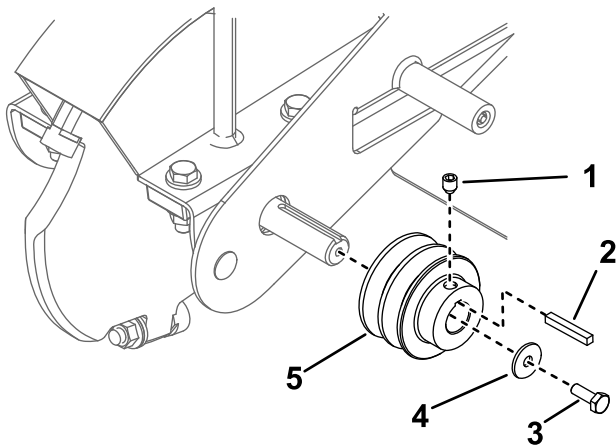


**Figure 8**

- |                                    |                                    |
|------------------------------------|------------------------------------|
| 1. Flange bolt—5/16 x 3/4 inch (2) | 3. Guard plate                     |
| 2. Locknut—5/16 inch (3)           | 4. Carriage bolt (5/16 x 3/4 inch) |

g239138

4. Apply thread-locking compound to the bolt (1/4 x 3/4 inch) and use the bolt, washer (0.27 x 0.89 x 0.09 inches), and square key to install the front pulley, with the pulley face flush with the end of the shaft ([Figure 9](#)). Torque the bolt to 13.6 N·m (120 in-lb).

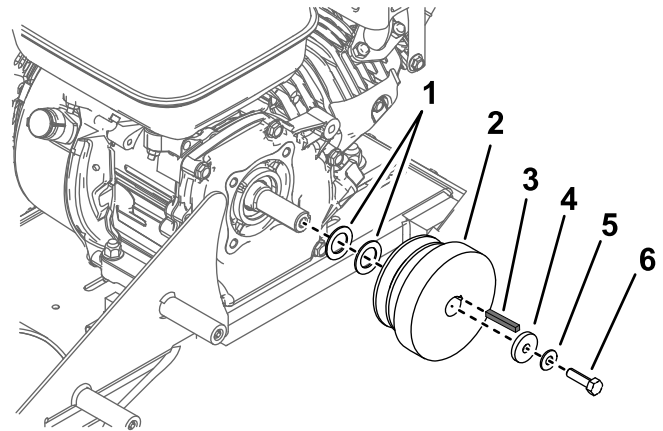


**Figure 9**

- |                          |                                       |
|--------------------------|---------------------------------------|
| 1. Set screw             | 4. Washer (0.27 x 0.89 x 0.09 inches) |
| 2. Square key            | 5. Front pulley                       |
| 3. Bolt (1/4 x 3/4 inch) |                                       |

g239137

5. Apply thread-locking compound to the set screw, and secure the pulley with the set screw, washer (0.27 x 0.89 x 0.09 inches), and bolt (1/4 x 3/4 inch) as shown in [Figure 9](#). Torque the setscrew to 14.9 to 17.6 N·m (132 to 156 in-lb).
6. Apply thread-locking compound to the bolt (5/16 x 1-1/8 inch) and use the bolt, 2 washers (0.76 x 1.26 x 0.07 inches), 1 washer (0.32 x 1.12 x 0.18 inches), 1 washer (0.31 x 0.78 x 0.07 inches) and the square key to install the clutch pulley ([Figure 10](#)). Torque the bolt to 22.6 to 28.2 N·m (200 to 250 in-lb).



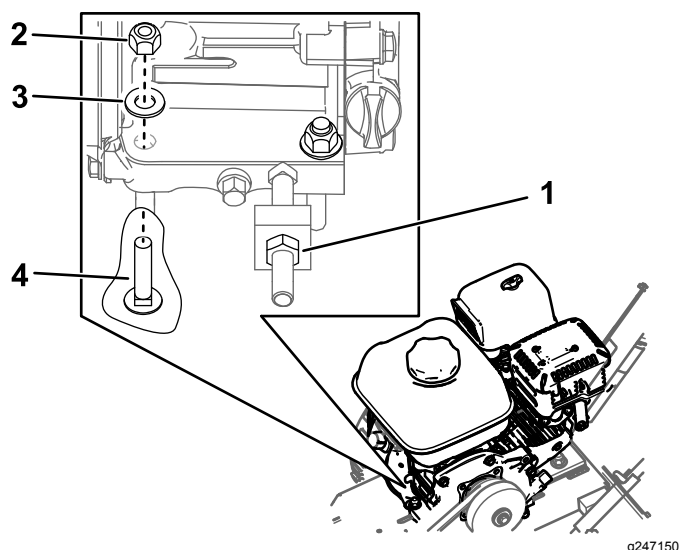
**Figure 10**

- |                                       |                                       |
|---------------------------------------|---------------------------------------|
| 1. Washer (0.76 x 1.26 x 0.07 inches) | 4. Washer (0.32 x 1.12 x 0.18 inches) |
| 2. Clutch pulley                      | 5. Washer (0.31 x 0.78 x 0.07 inches) |
| 3. Square key                         | 6. Bolt (5/16 x 1-1/8 inch)           |

g265325

7. Install the belt around the front pulley and clutch pulley ([Figure 13](#)).

8. Tighten the jam nut on the tensioner bolt (Figure 11).

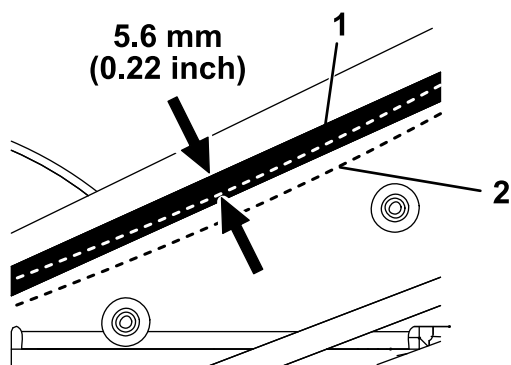


**Figure 11**

Front fasteners shown

- |                          |  |
|--------------------------|--|
| 1. Jam nut               | 3. Washer—0.38 x 0.73 x 0.07 inches (4)  |
| 2. Locknut—5/16 inch (4) | 4. Carriage bolt—5/16 x 1-1/2 inches (4) |

9. Push down on the belt to check the tension (Figure 12). You should be able to push the belt down 5.6 mm (0.22 inch) using 3.4 kg (7.4 lb) of force. Adjust the tensioner bolt as necessary to tighten or loosen the belt.



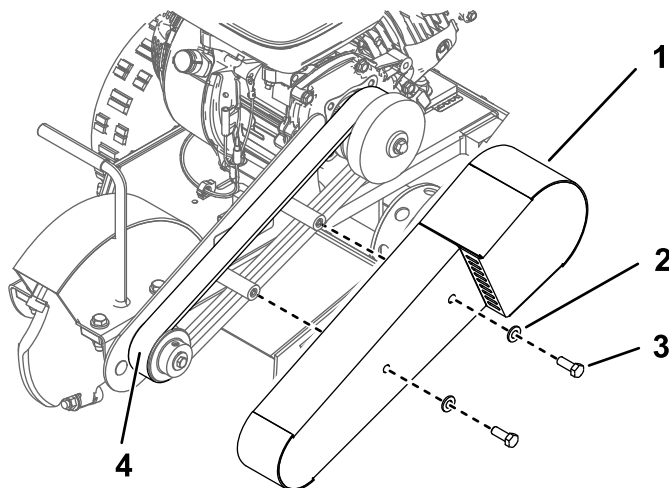
**Figure 12**

- |                       |                                       |
|-----------------------|---------------------------------------|
| 1. Belt without force | 2. Belt with 3.4 kg (7.4 lb) of force |
|-----------------------|---------------------------------------|

10. Install or tighten the fasteners securing the engine to the frame (Figure 11).

**Note:** Ensure that the engine does not twist in the chassis and the clutch pulley is aligned with the belt.

11. Install the belt guard using 2 bolts (3/8 x 1 inch) and 2 washers (0.38 x 0.75 x 0.08 inches) as shown in Figure 13.



**Figure 13**

- |   |                        |
|---|------------------------|
| 1. Belt guard                           | 3. Bolt (3/8 x 1 inch) |
| 2. Washer—0.38 x 0.75 x 0.08 inches (2) | 4. Belt                |

# 5

## Installing the Decal

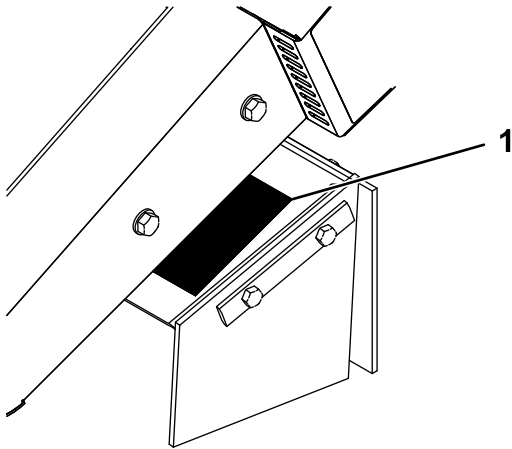
### Model 138-3125 Only

Parts needed for this procedure:

1	Decal
---	-------

## Procedure

Install a new decal over the existing decal on the wing bracket as shown in [Figure 14](#).



**Figure 14**

g240034

1. Decal
-