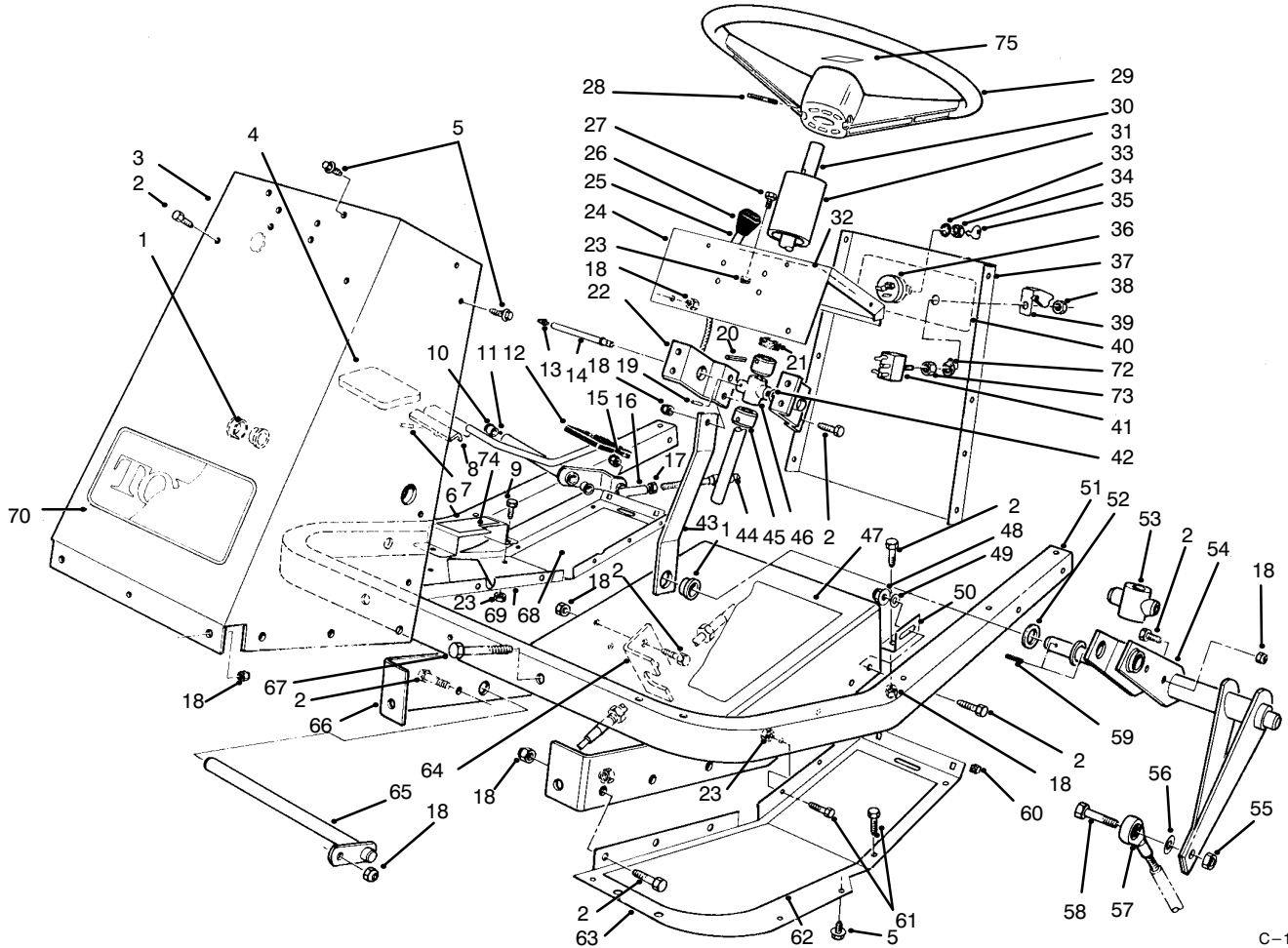




MODEL NO. 30612-990001 & UP

PARTS CATALOG

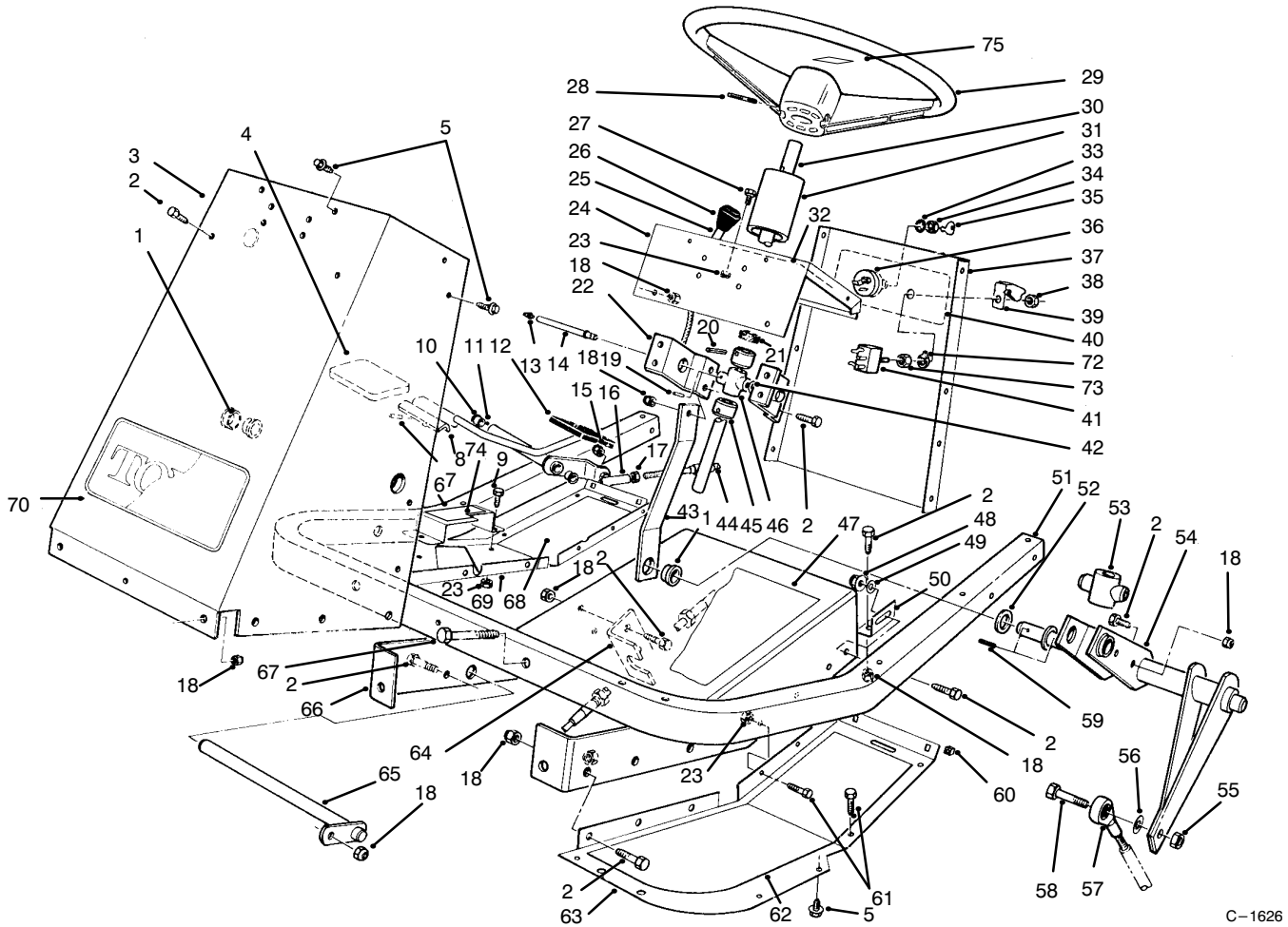
GROUNDMASTER 120



C-1626

FRAME & STEERING ASSEMBLY

Ref. No.	Part No.	Description	No. Used	Ref. No.	Part No.	Description	No. Used
1	27-9080	Bushing	3	15	3296-3	Nut - Hex.	1
2	322-4	Screw - Hex. Hd.	19	16	2411-34	Ball Joint	1
3	54-1900	Tower - Front	1	17	3220-1	Nut - Jam	1
4	49-6470	Pad - Accelerator	1	18	3296-29	Nut - Lock	24
5	46-8560	Screw - Hex. Hd.	21	19	32121-20	Pin - Roll	1
6	80-4930	Footrest - Pedal	1	20	32121-31	Pin - Roll	2
7	32121-51	Pin - Roll	1	21	21-9260	Cover - Dust	1
8	80-4920	Pedal - Accelerator	1	22	54-1950	Bracket - Support Bearing	2
9	321-3	Screw - Hex. Hd.	2	23	3296-42	Nut - Lock	16
10	256-156	Bushing	2	24	54-1000	Tower - Top	1
11	74-0110	Pedal - Traction (Incl. Ref. #10)	1	25	54-1451	Control - Throttle, Choke	2
12	49-6430	Pad - Reverse	1	26	66-0120	Knob	2
13	302-22	Fitting - Grease	1	27	321-2	Screw - Hex. Hd.	4
14	59-1610	Tube - Grease Fitting	1	28	32121-10	Pin - Roll	1

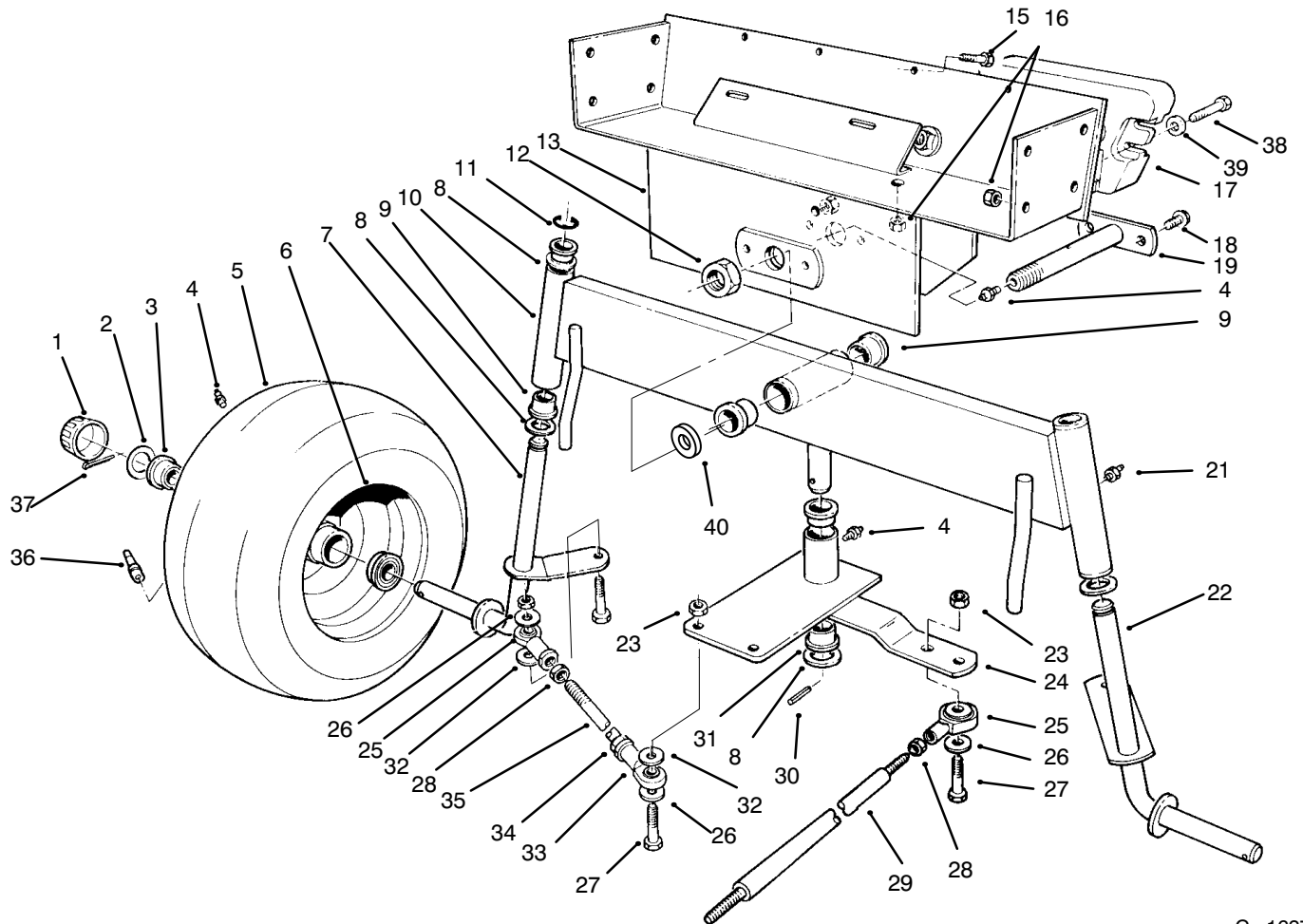


C-1626

FRAME & STEERING ASSEMBLY

Ref. No.	Part No.	Description	No. Used
29	98-1467	Wheel - Steering	1
30	54-1420	Shaft - Steering	1
31	47-1980	Cover Steering Shaft	1
32	92-6278	Decal - Throttle Choke	1
33	3254-5	Washer - Lock	1
34	218-461	Nut - Lock	1
35	63-8360	Key	2
36	88-9830	Switch - Ignition (Incl. Ref. #33-35)	1
37	92-6266	Panel - Tower Rear	1
38	113179	Nut	1
39	113050	Cover - P.T.O. Switch	1
40	92-6277	Decal - Switch	1
41	116716	Switch - Clutch & Brake (Incl. Ref. # 38, 72 & 73)	1
42	3290-440	Washer - Belleville	1
43	54-1340	Link - Steering	1
44	54-2640	Cable - Traction Control	1
45	28-3940	Collar - Steering Shaft	2
46	60-9050	Bearing - Steering Shaft	1
47	54-0880	Decal - Tunnel	1
48	32128-20	Nut - Flange Lock	1
49	3256-23	Washer - Flat	4
50	54-1440	Bracket - Tunnel	2

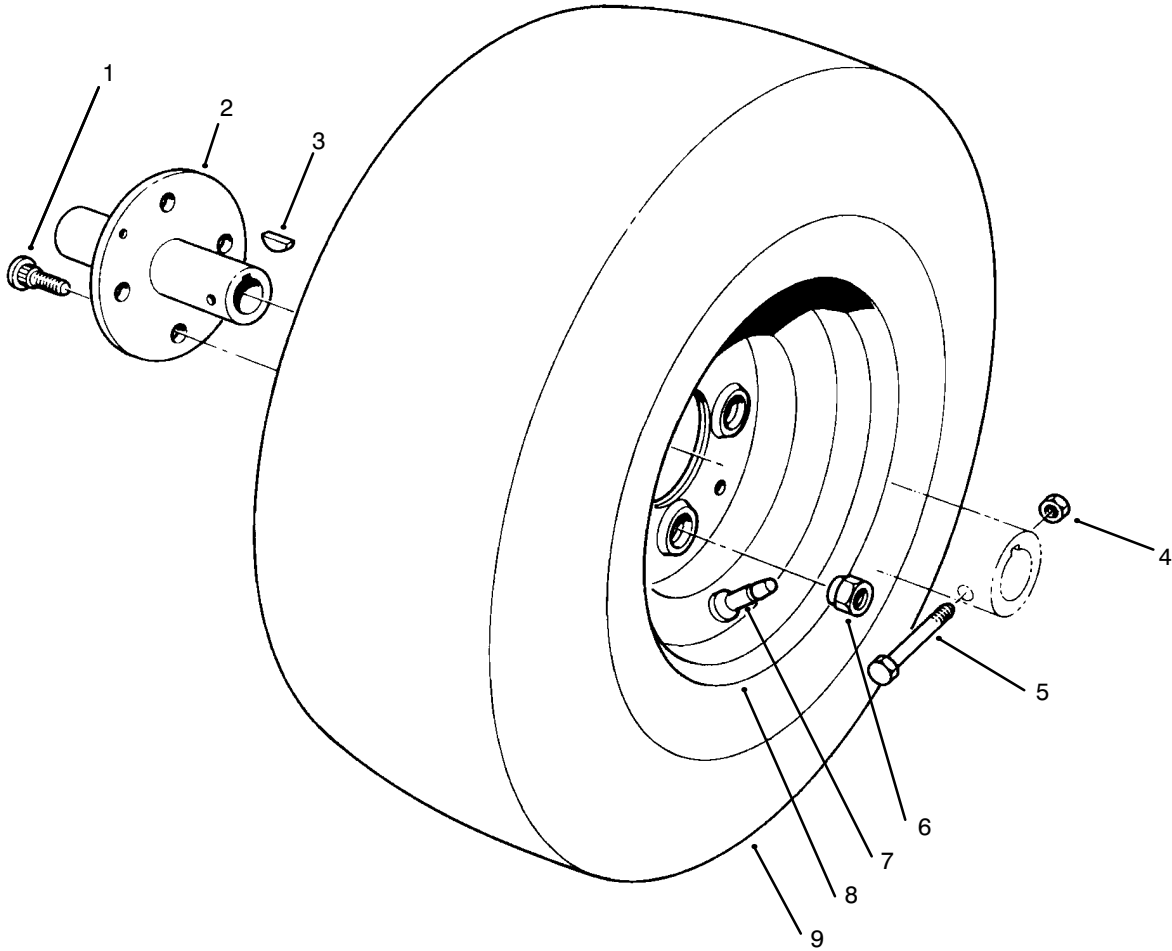
Ref. No.	Part No.	Description	No. Used
51	60-9140	Frame - Footrest	1
52	3-6498	Washer - Thrust	2
53	54-2630	Follower - Steering Shaft	1
54	54-2040	Follower Lever	1
55	3296-48	Nut - Lock	1
56	3256-4	Washer - Flat	1
57	251-304	Rod End	1
58	324-7	Screw - Hex. Hd.	1
59	32121-77	Pin Roll	2
60	32115-5	Nut - Square	4
61	321-4	Screw - Hex. Hd.	9
62	54-2260	Pad Footrest L.H.	1
63	54-1470	Footrest - L.H.	1
64	54-1770	Bracket - Cable Traction	1
65	59-1550	Pedal - Shaft	1
66	60-9150	Tunnel	1
67	322-10	Screw - Hex. Hd.	2
68	54-2270	Pad - Footrest R.H.	1
69	80-4910	Footrest - R.H.	1
70	62-7400	Decal - Toro	1
72	102950	Washer	1
73	105805	Nut	1
74	82-4720	Pad - Footrest	1
75	98-1459	Decal - Toro	1



C-1627

REAR AXLE ASSEMBLY

Ref. No.	Part No.	Description	No. Used	Ref. No.	Part No.	Description	No. Used
1	61-9780	Hub Cap	2	22	54-0560	Spindle L. H.	1
2	28-2480	Washer - Flat	2	23	3296-48	Nut	5
3	251-210	Bearing - Ball	4	24	92-6257	Plate- Pivot (Incl. Ref. #4 & 30)	1
4	302-5	Fitting - Grease	4	25	251-305	Rod End	3
5	231-126	Tire	2	26	3256-4	Washer - Flat	6
6	242-60	Rim	2	27	324-7	Screw	5
7	54-0570	Spindle R.H.	1	28	3220-4	Nut - Jam	3
8	3-6498	Washer - Thrust	5	29	54-1491	Rod - Steering, Rear	1
9	46-6680	Bushing	6	30	32121-51	Pin - Roll	1
10	92-6255	Axle - Rear (Incl. Ref. #9 & 20)	1	31	27-9080	Bushing	2
11	32151-48	Ring - Retaining	2	32	62-4420	Spacer	81
12	3296-41	Nut - Hex.	1	33	251-304	Rod End	2
13	54-0330	Frame - Rear	1	34	3220-19	Nut - Jam	2
15	321-4	Screw	4	35	57-3100	Tie Rod - Steering	2
16	3296-29	Nut	8	36	232-27	Valve Stem w/Cap	2
17	24-5790	Weight - Rear	1	37	3272-12	Pin - Cotter	2
18	32144-15	Screw	2	38	325-6	Screw	2
19	59-1500	Pivot - Axle	1	39	3253-7	Washer	2
21	302-49	Fitting - Grease	3	40	3256-9	Washer	1



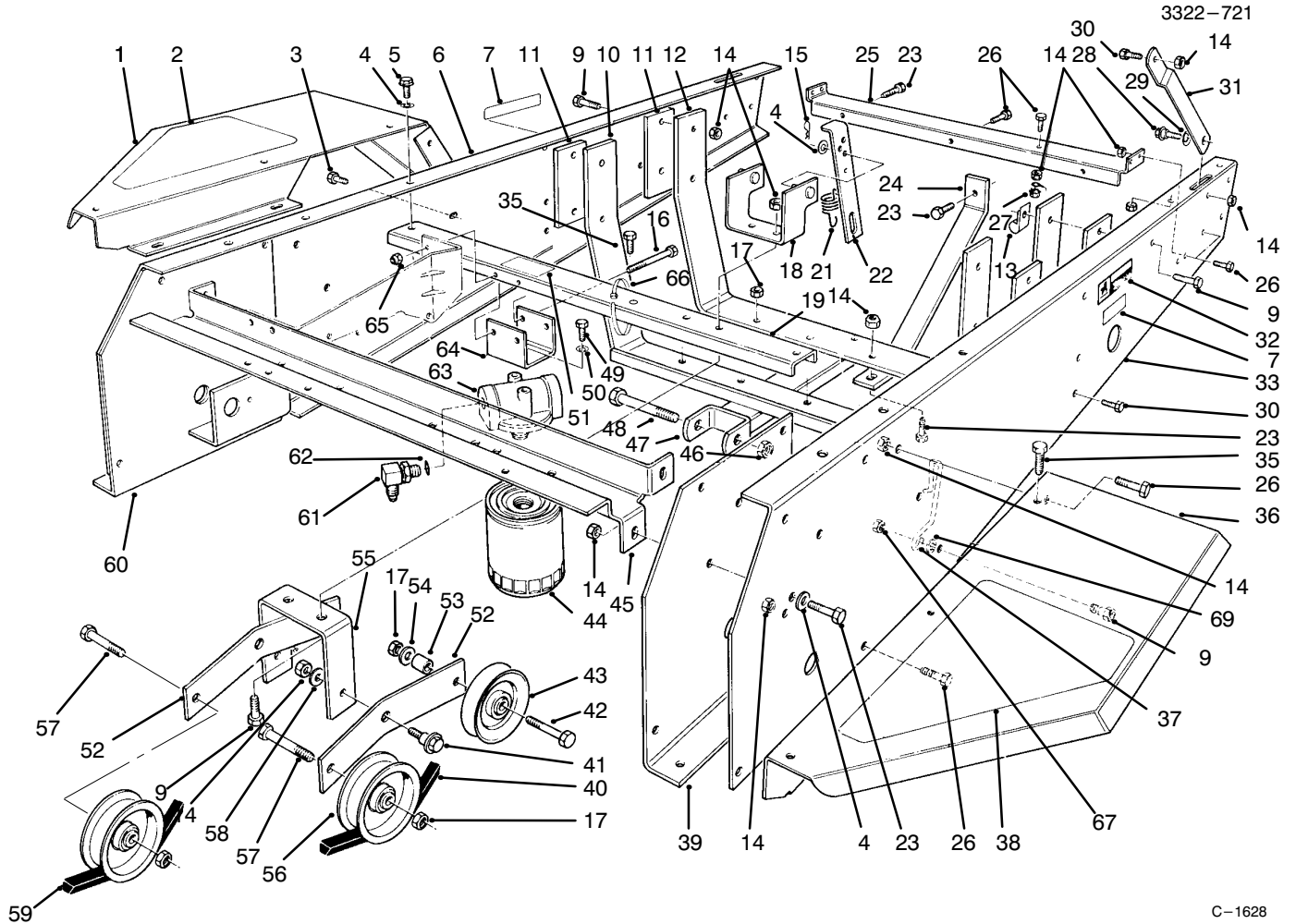
T-0071

FRONT WHEEL ASSEMBLY

Ref. No.	Part No.	Description	No. Used
1	242-71	Bolt - Wheel	8
2	54-0140	Hub - Wheel	2
3	3257-10	Key - Woodruff	2
4	3296-29	Nut - Lock	2
5	322-10	Screw	2

Ref. No.	Part No.	Description	No. Used
6	242-50	Nut	8
7	232-27	Valve Stem w/Cap	2
8	242-76	Rim	2
9	231-122	Tire	2

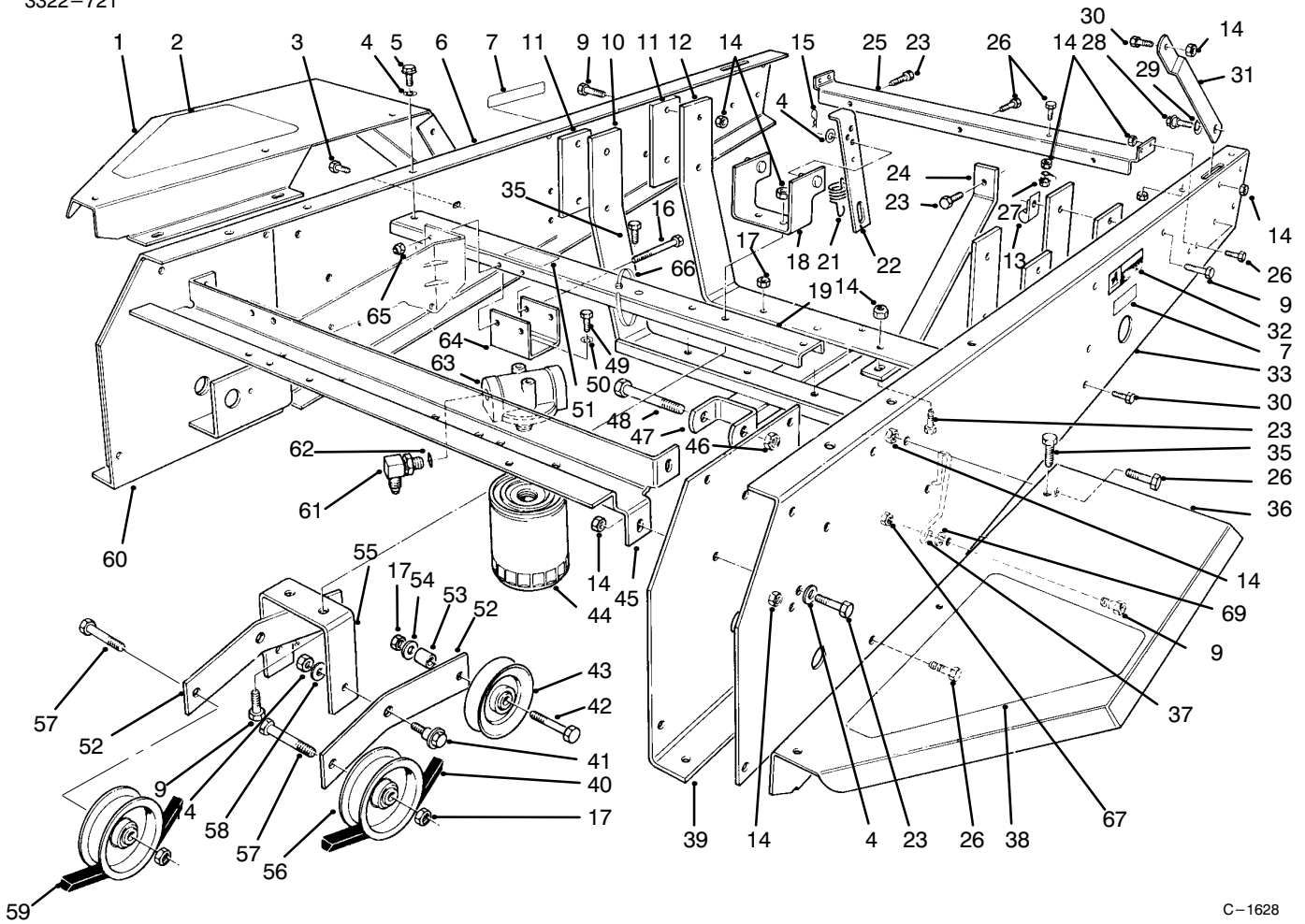
PROTOTYPE



C-1628

FRAME & JACKSHAFT ASSEMBLY

Ref. No.	Part No.	Description	No. Used	Ref. No.	Part No.	Description	No. Used
1	54-1930	Fender R.H.	1	24	92-6254	Bar - Tension	1
2	92-6292	Pad - Fender R.H.	1	25	54-1830	Support - Shield	1
3	3234-14	Screw	4	26	322-4	Screw	13
4	3256-23	Washer - Flat	8	27	32149-1	Nut - Lock	1
5	32144-11	Screw - Thread Forming	2	28	27-0410	Bolt - Shoulder	2
6	54-1910	Channel - Side R.H.	1	29	3290-211	Washer - Spring	2
7	77-3100	Decal - Caution	2	30	322-3	Screw	2
9	322-6	Screw	18	31	54-1870	Stop - Hood, Lower	2
10	92-6250	Mount - Engine	1	32	54-0910	Decal - Warning	1
11	54-1810	Plate - Engine, Rear	4	33	54-1920	Channel - Side L.H.	1
12	92-6251	Mount - Engine	1	35	46-8560	Screw	7
13	2412-100	"J" Clamp	2	36	54-1940	Fender L.H.	1
14	3296-29	Nut	33	37	55-4860	Guide - Belt	1
15	3290-250	Pin - Cotter	2	38	92-6293	Pad - Fender L.H.	1
16	321-14	Screw	2	39	54-0460	Axle Stand - L.H.	1
17	3296-44	Nut	4	40	54-1380	JackShaft - "V" Belt	1
18	54-2070	Anchor - Spring	1	41	19-1470	Bolt - Shoulder	2
19	98-0794	Channel - Middle	1	42	323-11	Screw	2
20	323-7	Screw	3	43	62-4530	Idler - "V" Belt	2
21	54-1410	Spring - Idler	2	44	54-0110	Filter - Transmission Oil	1
22	54-1130	Link - Idler Anchor	2	45	54-1010	Channel - Front	1

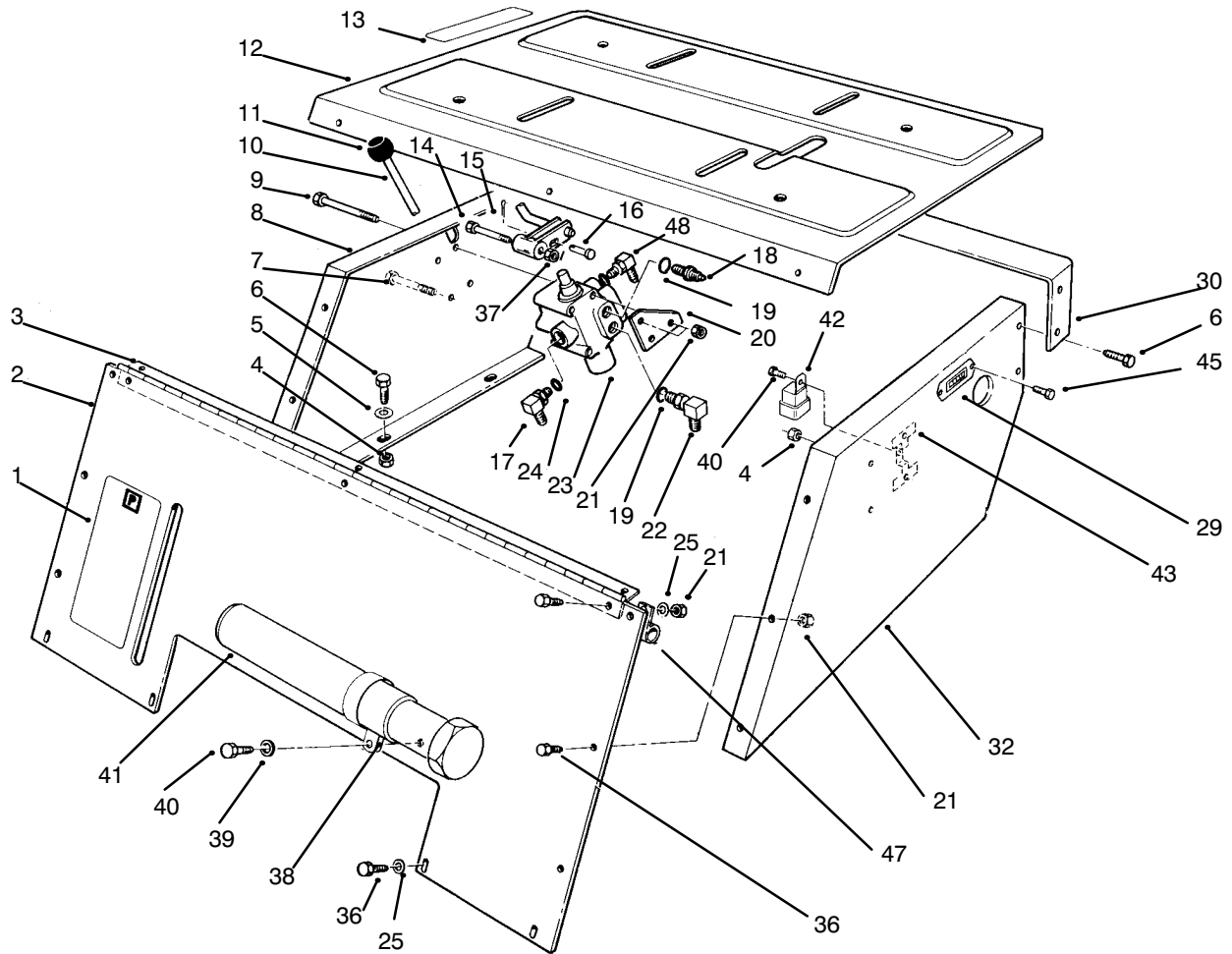


C-1628

FRAME & JACKSHAFT ASSEMBLY (Continued)

Ref. No.	Part No.	Description	No. Used
46	3296-61	Nut	1
47	92-6252	Mount - Cylinder	1
48	327-24	Screw	1
49	321-3	Screw	2
50	3253-3	Washer - Lock	2
51	53-4430	Decal - Oil	1
52	98-0795	Lever - Idler	2
53	37-7250	Spacer	2
54	3256-3	Washer - Flat	2
55	98-0792	Bracket - Idler Mount	1
56	62-4540	Idler - Flat	2

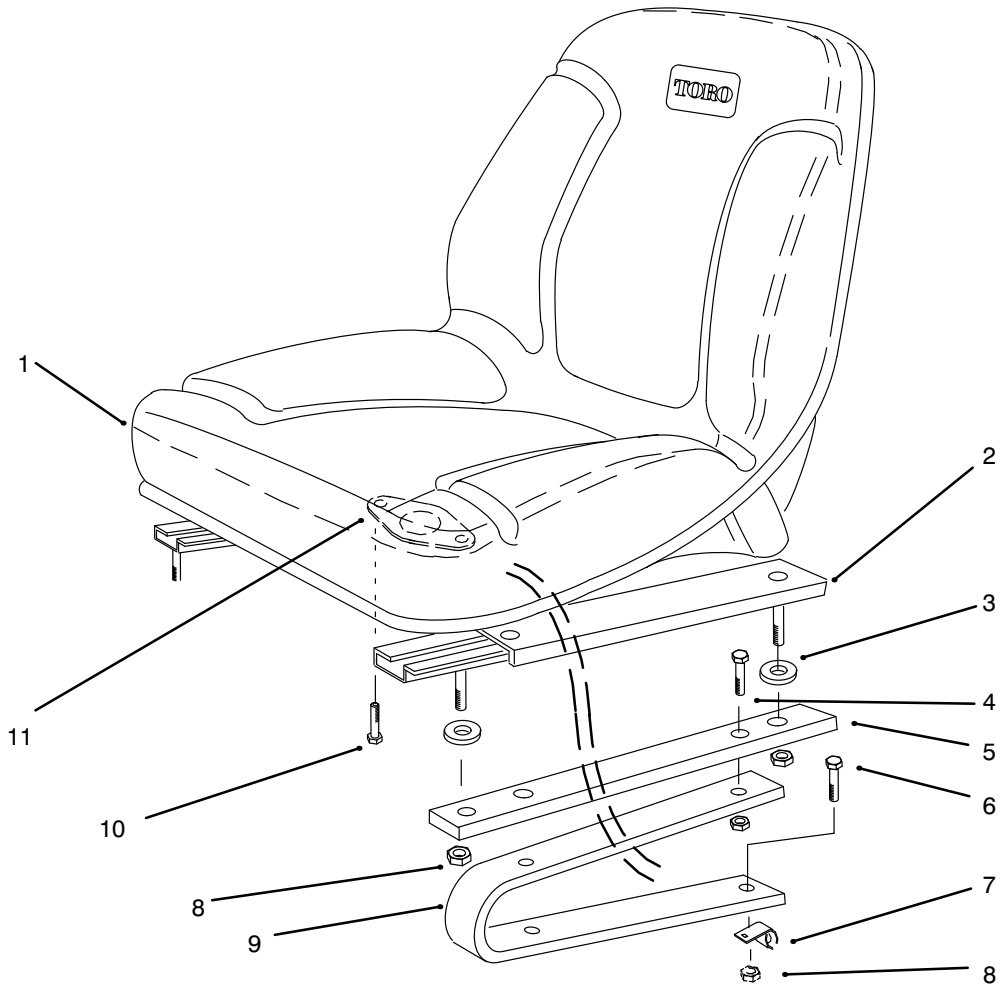
Ref. No.	Part No.	Description	No. Used
57	323-9	Screw	2
58	23-1120	Washer - Flat	2
59	54-1390	"V" Belt - Traction	1
60	54-0450	Axle Stand R.H.	1
61	340-3	Adapter	2
63	86-9080	Head - Filter	1
64	54-1120	Bracket - Filter Head	1
65	3296-42	Nut - Lock	2
66	3290-379	Cable Tie	7
67	32128-20	Nut - Flange Lock	1
69	3255-8	Washer - Lock, Ext. Tooth	1



C-2817

SEAT SUPPORT ASSEMBLY

Ref. No.	Part No.	Description	No. Used	Ref. No.	Part No.	Description	No. Used
1	54-0920	Decal - Parking Brake	2	21	3296-42	Nut - Lock	19
2	80-3760	Support - Seat, Front	1	22	353-375	Fitting - 90°	1
3	54-1310	Hinge - Seat	1	23	54-0090	Valve Assembly	1
4	3296-29	Nut	12	24	237-42	"O" Ring	2
5	3256-23	Washer - Flat	6	25	3256-1	Washer - Flat	11
6	322-4	Screw	10	29	75-6820	Meter - Hour	1
7	321-14	Screw	2	30	54-1550	Support - Hood	1
8	54-1220	Support - Seat R.H.	1	32	92-5435	Support - Seat L.H.	1
9	321-23	Screw	2	36	321-4	Screw	14
10	82-4680	Lever - Valve	1	37	3296-39	Nut	1
11	233-37	Knob	1	38	2412-120	"R" Clamp	2
12	92-6281	Plate - Seat	1	39	3256-51	Washer	2
13	54-0900	Decal - Lift Control	1	40	32144-73	Screw	4
14	56-6590	Screw	1	41	74-0720	Tube - Manual	1
15	3272-6	Pin - Cotter	1	42	63-7590	Relay	1
16	283-17	Pin - Clevis	1	43	92-6259	Bracket	1
17	353-511	Fitting	1	45	32144-18	Screw	2
18	353-545	Fitting	1	47	2412-67	Clamp - Wire	1
19	237-78	"O" Ring	2	48	340-98	Fitting	1
20	82-4700	Bracket - Lever, Valve	1				



C-1603

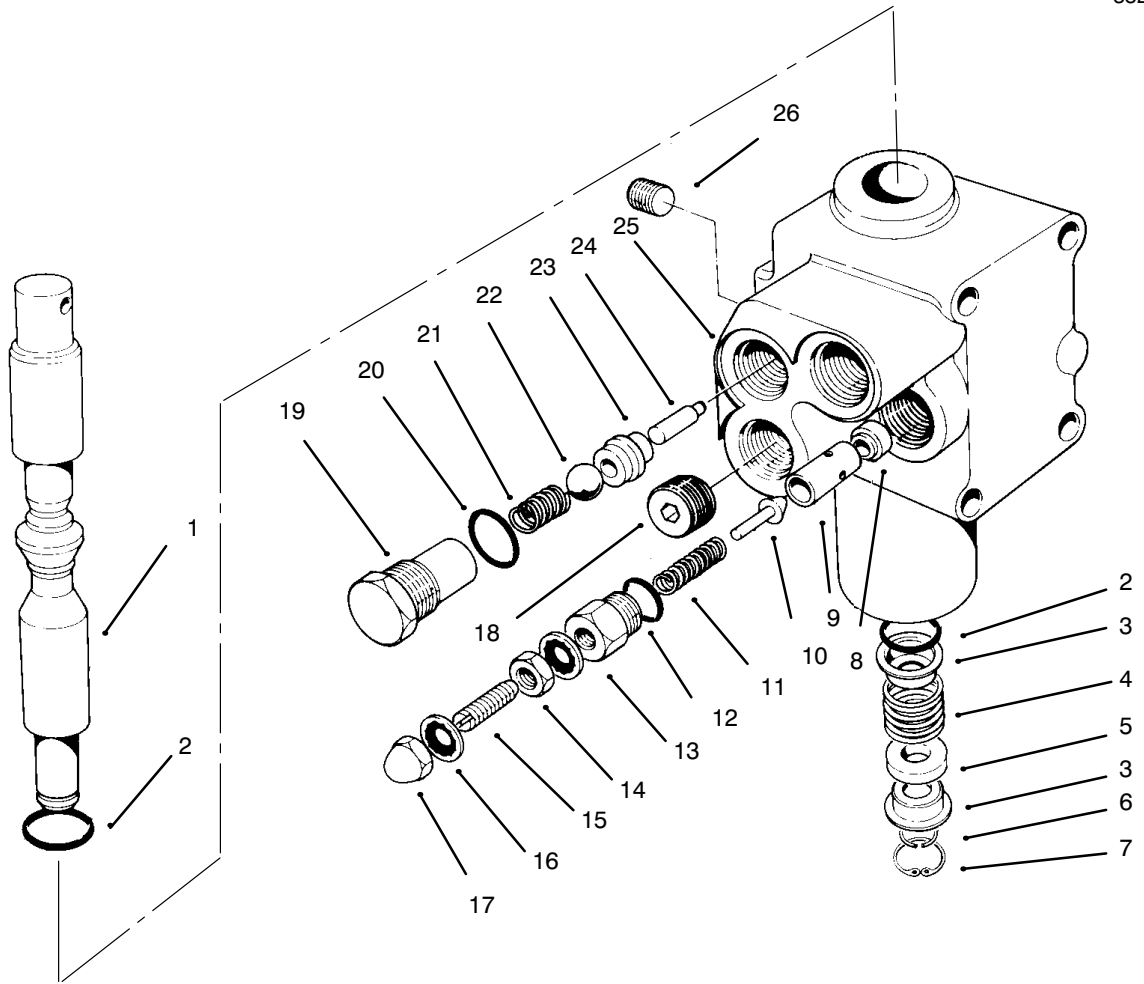
SEAT ASSEMBLY

Ref. No.	Part No.	Description	No. Used
1	92-6280	Seat	1
2	51-0790	Slide Seat Adjust Assembly	1
*	51-0780	Slide Seat Assembly R.H.	1
3	109989	Spacer	4
4	322-4	Screw	4
5	92-6284	Plate - Adapter, Seat	2
6	322-5	Screw	4

Ref. No.	Part No.	Description	No. Used
7	2412-93	Clamp - Hose	1
8	3296-29	Nut - Lock	8
9	114263	Spring - Seat	2
10	321-3	Screw	2
11	92-6282	Switch - Seat	1
*	92-6533	Cushion - Replacement	1

PROTOTYPE

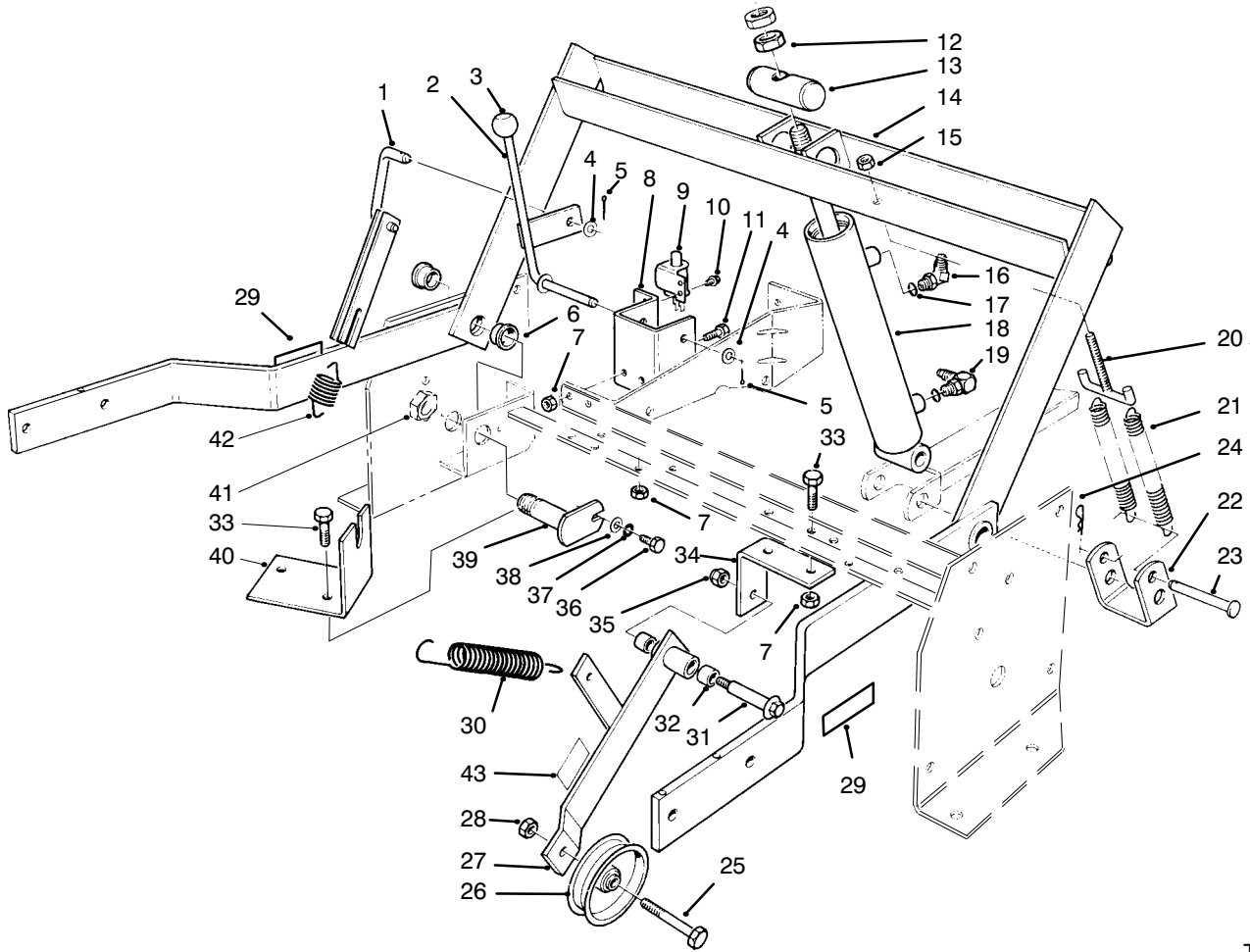
* Not Illustrated



T-0075

VALVE ASSEMBLY NO. 54-0090

Ref. No.	Part No.	Description	No. Used	Ref. No.	Part No.	Description	No. Used
1	54-0260	Spool	1	15		Screw - Set	1
2	22-8500	"O"Ring	2	16		Stat O Seal	1
3	22-8380	Retainer - Spring	2	17		Nut - Acorn	1
4	22-8410	Spring	1	18	28-1120	Plug	1
5	27-5200	Spacer	1	19	22-8330	Plug	1
6	22-8480	Ring - Retaining	1	20	237-42	"O"Ring	2
7	22-8490	Ring - Retaining	1	21	22-8340	Spring	1
8	55-3640	Seat - Relief	1	22	22-8350	Ball	1
9		Guide	1	23	22-8370	Seat - Check Valve	1
10		Plunger	1	24	22-8360	Pin - Cam	1
11		Spring	1	25		Body	1
12		"O"Ring	1	26	55-3650	Plug	1
13		Cap - PV Adjustment	1	*	55-3630	Adjustable Relief Valve (Incl. Ref. #9-17)	1
14		Nut	1				

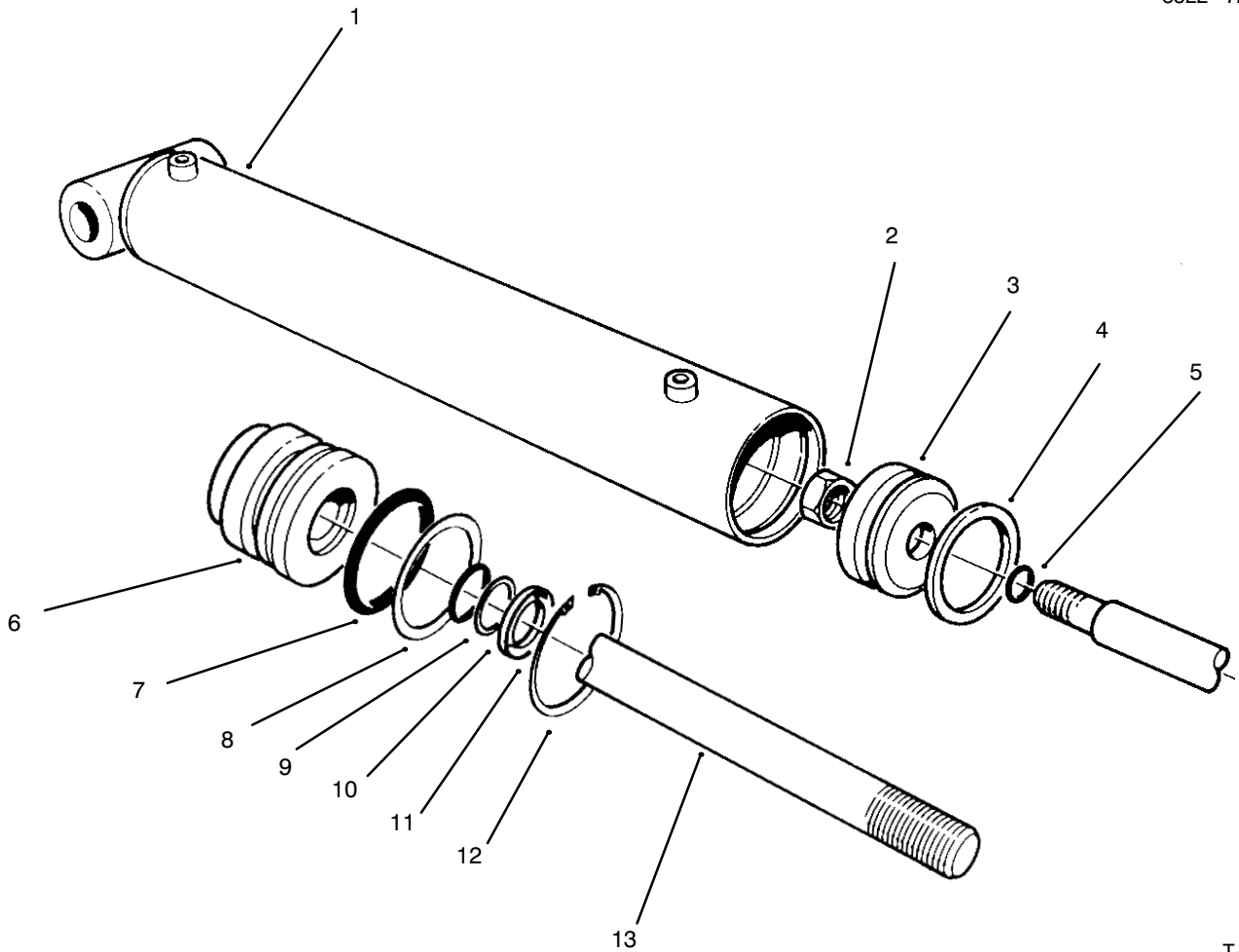


T-0076

PARKING BRAKE & LIFT FRAME ASSEMBLY

Ref. No.	Part No.	Description	No. Used
1	54-2120	Link - Parking Brake	1
2	54-2110	Lever - Brake	1
3	233-37	Knob	1
4	3256-24	Washer - Flat	2
5	3272-10	Pin - Cotter	2
6	27-9080	Bushing	4
7	3296-29	Nut	6
8	54-1270	Bracket - Parking Brake	1
9	55-7120	Switch - Brake	1
10	32144-1	Screw - Thread Forming	2
11	322-6	Screw	2
12	3220-6	Nut - Jam	2
13	54-2000	Pin - Pivot	1
14	66-1570	Frame - Lift (Incl. Ref. #6)	1
15	32153-3	Nut	2
16	353-431	Fitting - 45°	1
17	237-78	"O" Ring	2
18	54-0150	Cylinder - Lift	1
19	353-375	Fitting - 90°	1
20	56-3320	"T" Hook	1
21	56-2760	Spring - Extension	2
22	56-3370	Bracket - Spring	2

Ref. No.	Part No.	Description	No. Used
23	283-55	Pin - Clevis	1
24	3290-355	Pin - Cotter	1
25	323-10	Screw	1
26	36-3220	Pulley - Idler	1
27	12-1109	Lever - Idler (Incl. Ref. #43)	1
28	3296-44	Nut	1
29	61-3610	Decal - Warning	2
30	54-1170	Spring - Extension	1
31	27-6230	Bolt - Shoulder	1
32	256-154	Bushing	2
33	322-4	Screw	4
34	55-7310	Bracket - Idler	1
35	3296-6	Nut	1
36	321-2	Screw	2
37	3253-3	Washer	2
38	3256-1	Washer	2
39	54-2100	Pin - Pivot	2
40	56-6920	Bracket - Cable Extension	1
41	3296-15	Nut	2
42	54-0960	Spring - Parking Brake	1
43	55-4300	Decal	1

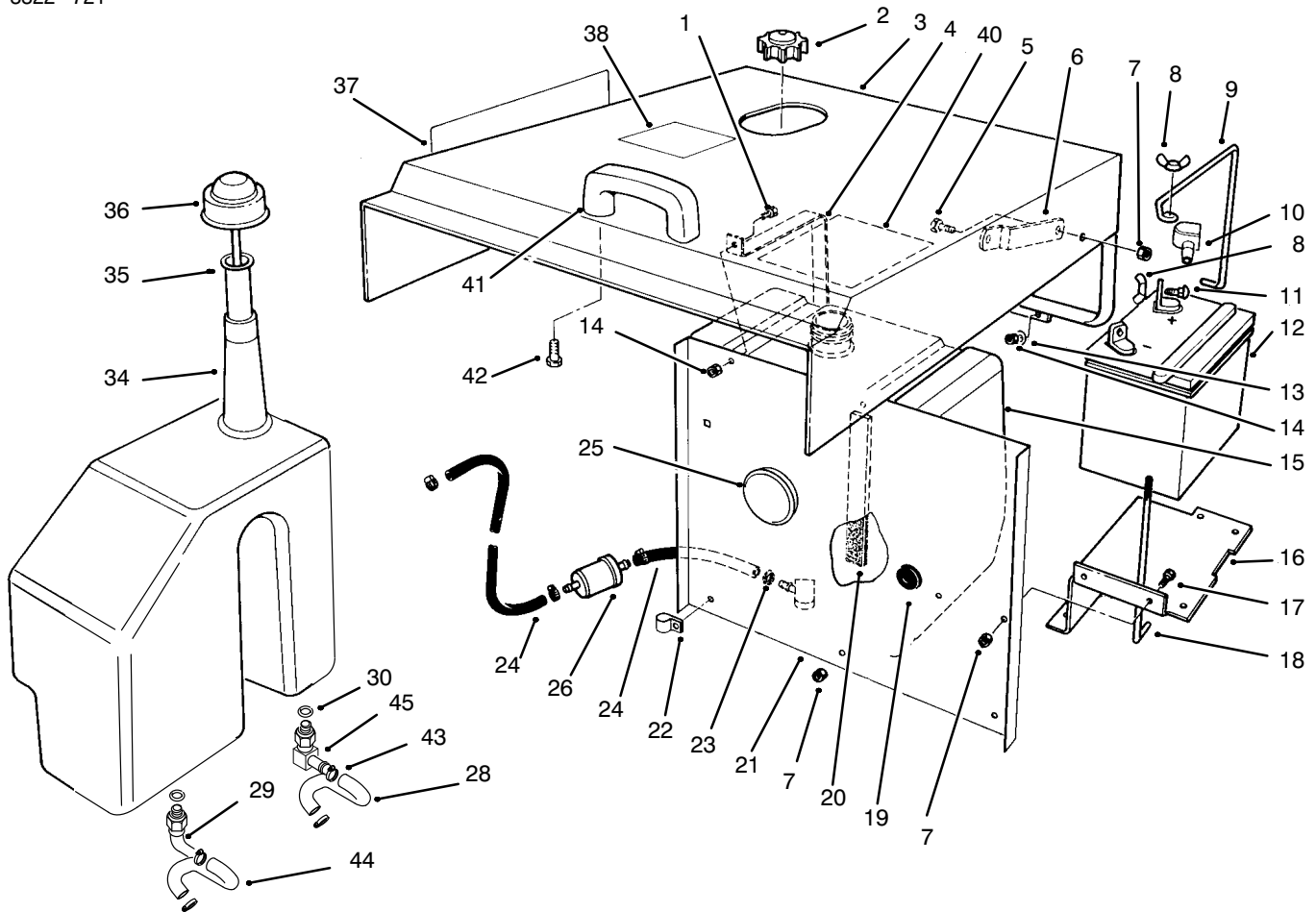


T-0077

HYDRAULIC LIFT CYLINDER NO. 54-0150

Ref. No.	Part No.	Description	No. Used	Ref. No.	Part No.	Description	No. Used
1†		Barrel	1	9		"O"Ring	1
2	32152-10	Nut - Lock	1	10		Washer - Backup	1
3	54-0300	Piston	1	11		Seal - Dust	1
4		Uniring	1	12	43-5220	Ring - Retaining	1
5		"O"Ring	1	13	54-0280	Shaft	1
6	54-0310	Head	1	*	54-0290	Seal Repair Kit	1
7		"O"Ring	1			(Incl. Ref. #4, 5 & 7-11)	
8		Washer - Backup	1				

PROTOTYPE



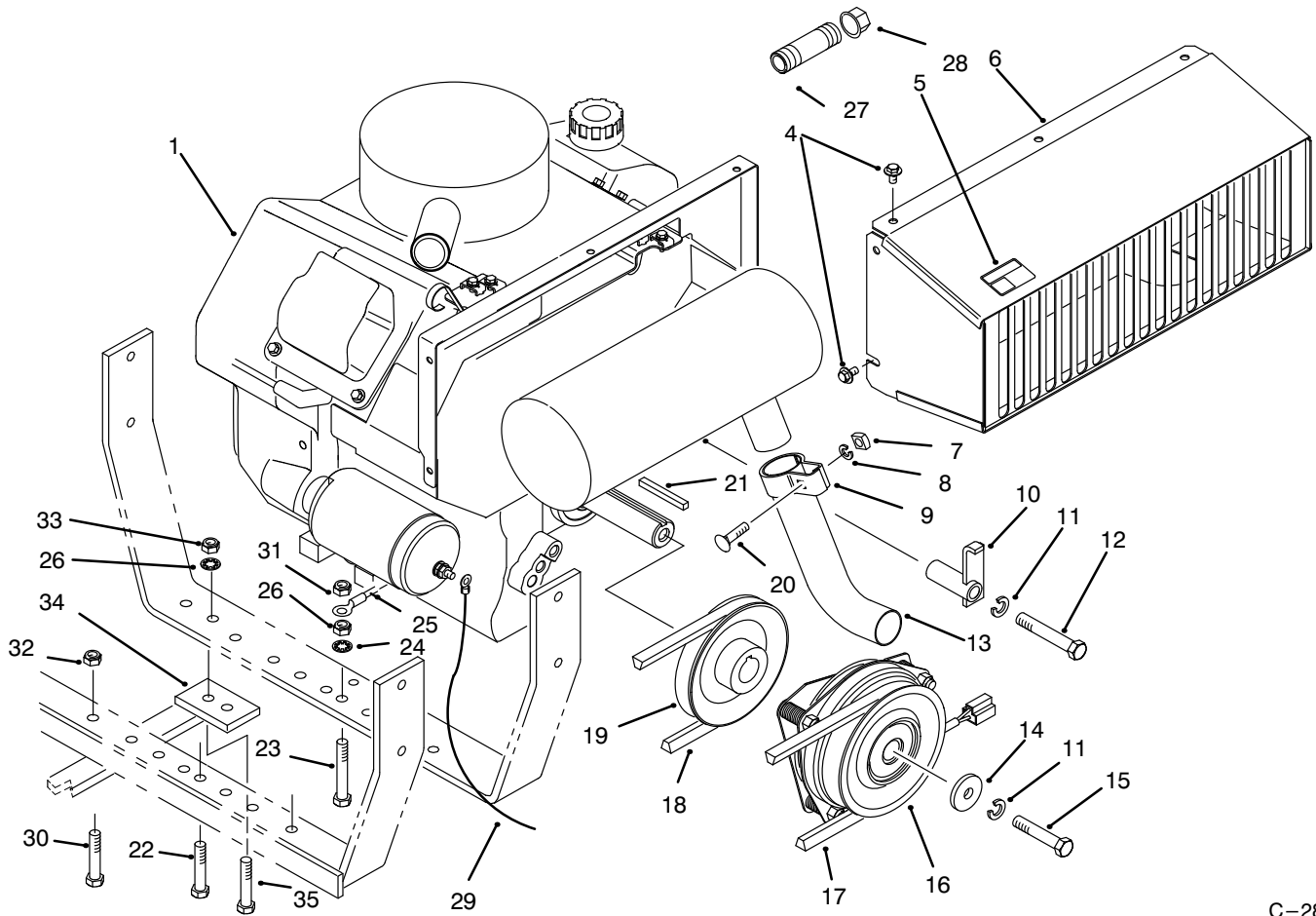
C-1630

HOOD, FUEL TANK & HYDRAULIC RESERVOIR ASSEMBLY

Ref. No.	Part No.	Description	No. Used
1	321-3	Screw - Hex. Hd.	2
2	55-3570	Cap - Fuel	1
3	14-4109	Hood	1
4	54-1880	Strap - Fuel Tank	2
5	322-3	Screw - Hex. Hd.	2
6	54-1860	Stop - Hood Upper	2
7	3296-29	Nut - Hex.	9
8	32103-22	Nut - Wing	3
9	54-1260	Clamp - Battery	1
10	77-0981	Boot - Terminal	1
11	3229-1	Bolt - Carriage	2
12	82-4640	Battery	1
13	3256-1	Washer	4
14	3296-42	Nut - Lock	8
15	62-4040	Tank - Fuel	1
16	54-1850	Support - Battery	1
17	322-4	Screw - Hex. Hd.	2
18	12-5950	Rod - Battery Support	1
19	237-100	Grommet	1
20	54-1890	Foam - Tank	2
21	92-6267	Shield - Heat	1
22	2412-100	"R" Clamp	3
23	2412-108	Clamp - Hose	4

Ref. No.	Part No.	Description	No. Used
24	92-6283	Hose - Fuel	2
25	92-6274	Plug - Cap	1
26	94-9695	Filter - Fuel	1
28	98-2853	Hydraulic Hose Assembly 10" Transmission to Reservoir	1
29	94-7691	Adapter - Hydraulic (Incl. Ref. #30)	1
30	237-80	"O" Ring	2
34	98-0781	Reservoir - Hydraulic	1
35	29-0590	Screen	1
36	36-4950	Cap - Oil	1
37	94-5410	Decal - Groundsmaster 120	2
38	92-6291	Decal - Refueling	1
40	92-6288	Decal - Service	1
41	65-5100	Handle	1
42	46-8091	Screw	2
43	2412-129	Clamp - Hose	4
44	98-2852	Hydraulic Hose Assembly 20" Transmission to Reservoir	1
45	98-2876	Adapter - Hydraulic (Incl. Ref. #30)	1
*	68-7330	Decal - Danger	1

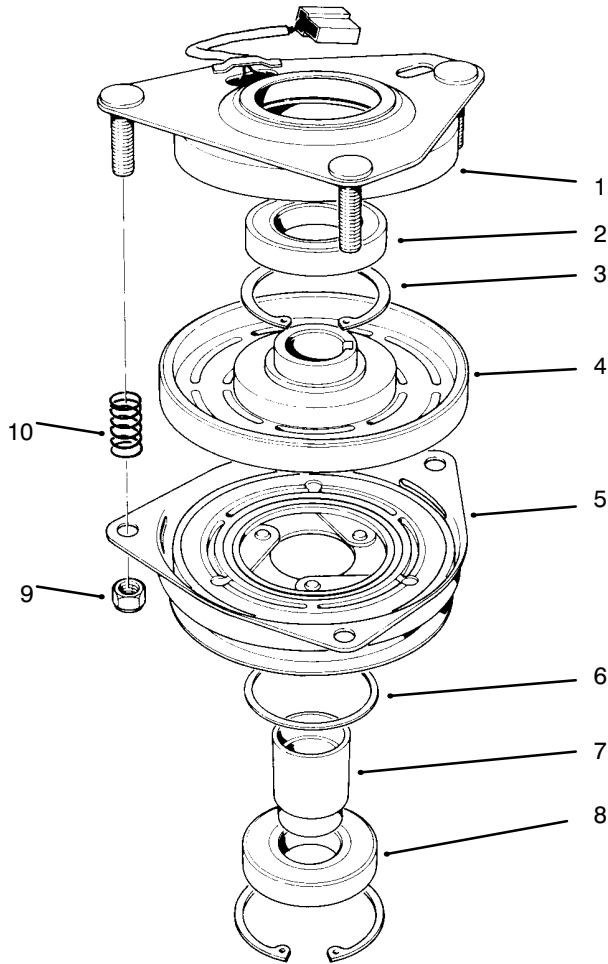
*Not Illustrated



C-2818

ENGINE ASSEMBLY

Ref. No.	Part No.	Description	No. Used	Ref. No.	Part No.	Description	No. Used
1	94-1297	Engine - Kohler 20 HP Model CH20QS PS 64556	1	19	54-2330	Pulley - Engine	1
4	48-7610	Screw	5	20	3230-3	Bolt - Carriage	1
5	63-8440	Decal - Hot Surface	1	21	5-0930	Key	1
6	92-6260	Duct - Engine	1	22	323-10	Screw - Hex. Hd.	1
7	3217-6	Nut - Square	1	23	323-12	Screw - Hex. Hd.	1
8	3253-4	Washer - Lock	1	24	3254-6	Washer - Lock, Int. Tooth	1
9	55-8660	Assembly - Clamp (Incl. Ref. #7, 8 & 20)	1	25	92-6287	Wire - Ground	1
10	54-2160	Bracket - Anchor	1	26	3296-39	Nut - Lock	2
11	3253-6	Washer - Lock	2	27	289-48	Nipple - Pipe	1
12	324-11	Screw - Hex. Hd.	1	28	288-10	Cap - Pipe	1
13	54-2290	Pipe - Exhaust	1	29	28-3894	Wire - Positive	1
14	44-8160	Washer - Flat	1	30	323-9	Screw	2
15	3212-24	Screw - Hex. Hd.	1	31	3290-357	Nut - Wizz	1
16	54-0220	Assembly - Clutch	1	32	32128-21	Nut - Lock	2
17	54-1380	V-Belt	1	33	3256-4	Washer - Flat	1
18	54-1390	V-Belt	1	34	98-8000	Guard - Tank	1
				35	323-7	Screw - Hex. Hd.	1

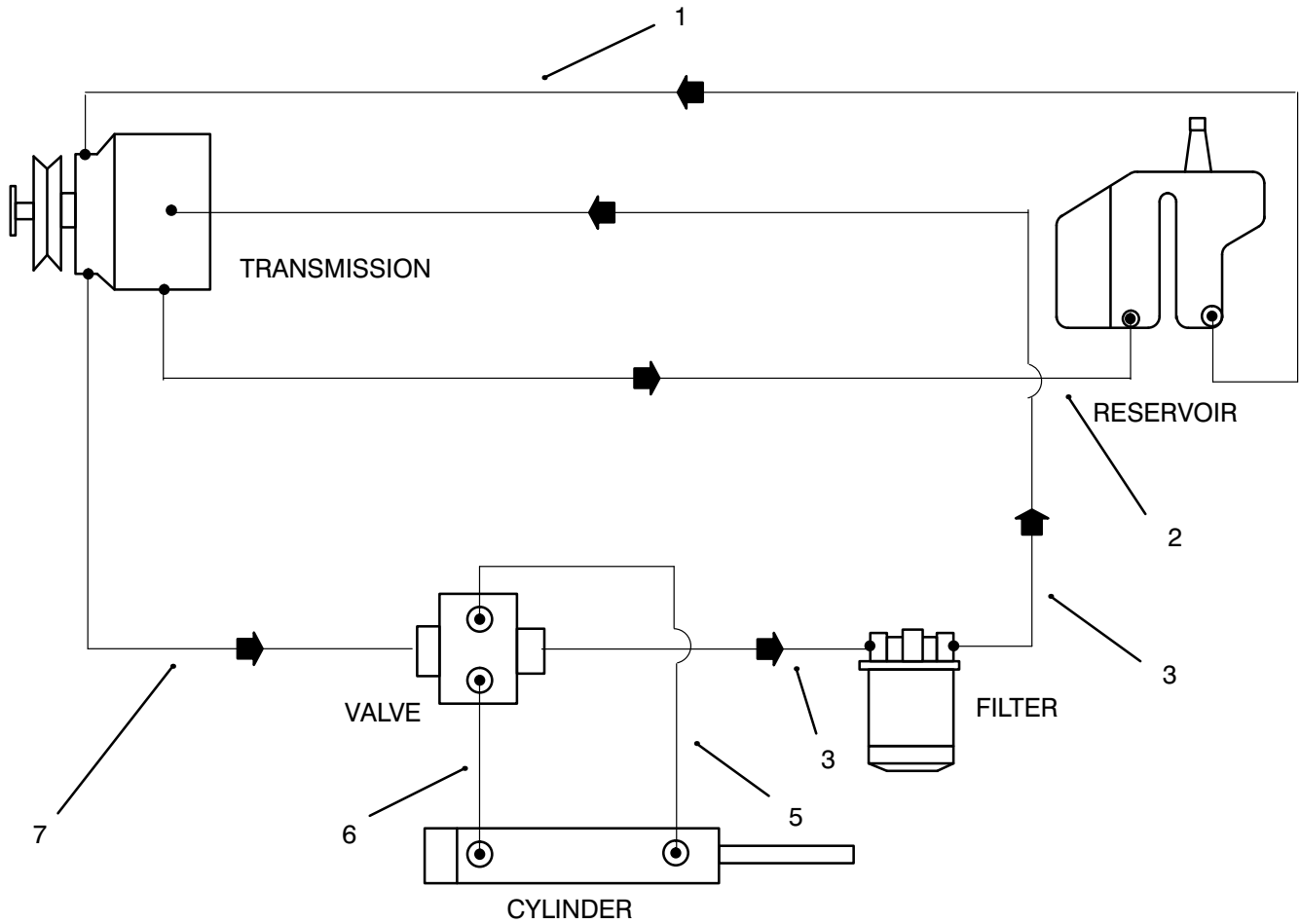


T-0080

CLUTCH ASSEMBLY NO. 54-0220

Ref. No.	Part No.	Description	No. Used	Ref. No.	Part No.	Description	No. Used
1	54-0230	Field Assembly (Incl. Ref. #2 & 3)	1	6	44-8330	Spacer - Bearing	1
2	251-292	Bearing - Field	1	7	44-8340	Collar - Bearing	1
3	44-8310	Ring - Retaining	2	8	251-291	Bearing - Pulley	1
4	44-8360	Field Coil, Rotor & Bearing (Incl. Ref. #1)	1	9	3296-6	Nut - Lock	3
5	44-8370	Armature & Pulley Assembly (Incl. Ref. #3, 6, 7 & 8)	1	10	44-8320	Spring	3

PROTOTYPE



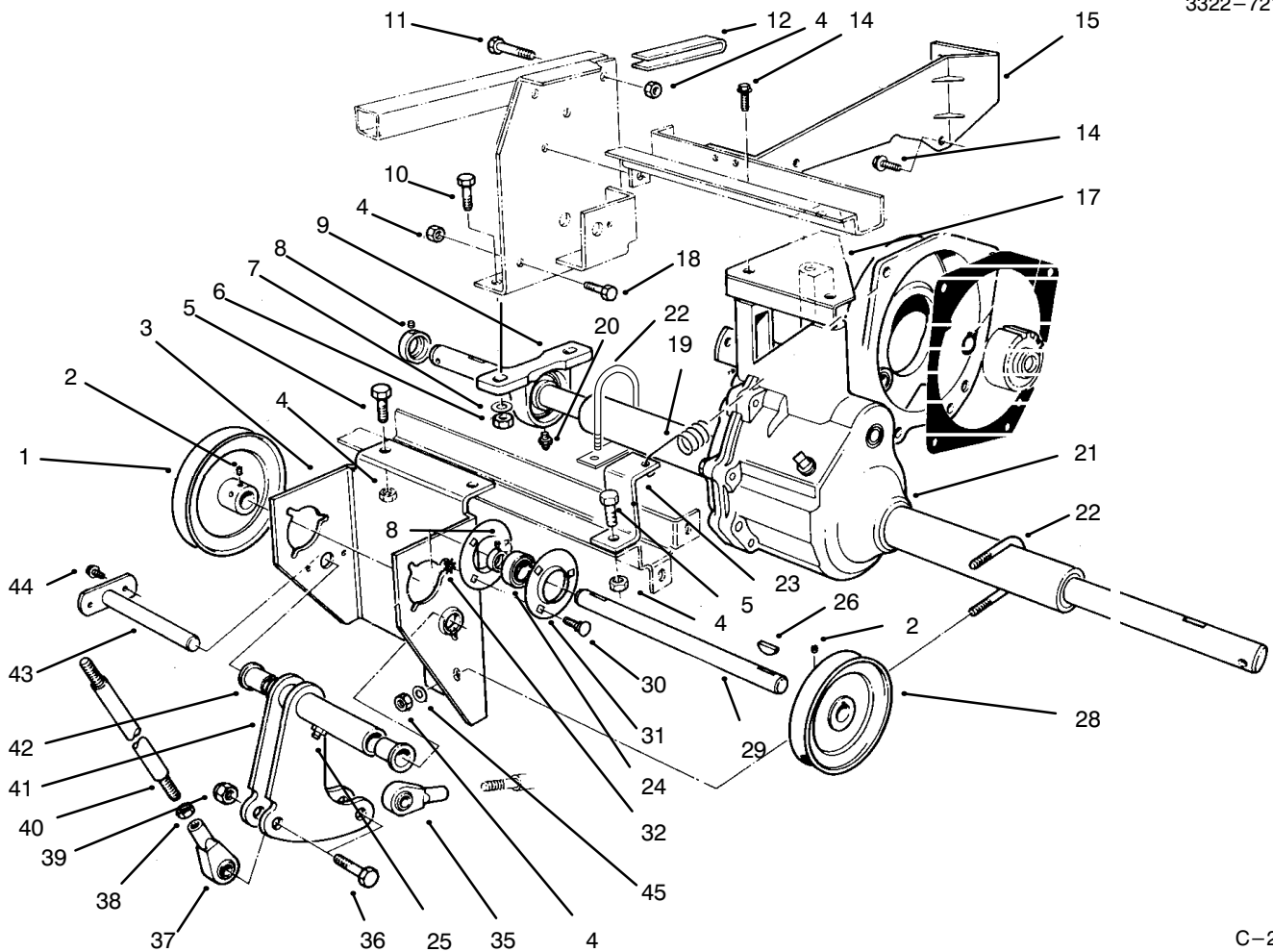
T-0084

HYDRAULIC SCHEMATIC

Ref. No.	Part No.	Description	No. Used
1	98-2852	Hydraulic Hose Assembly Reservoir to Transmission	1
2	98-2853	Hydraulic Hose Assembly Reservoir to Valve	1
3	98-2851	Hydraulic Hose Assembly Filter to Transmission	2
5	54-2610	Hydraulic Hose Assembly	

Ref. No.	Part No.	Description	No. Used
6	54-2620	Cylinder to Valve Hydraulic Hose Assembly	1
7	54-2590	Hydraulic Hose Assembly Transmission to Valve	1

PROTOTYPE

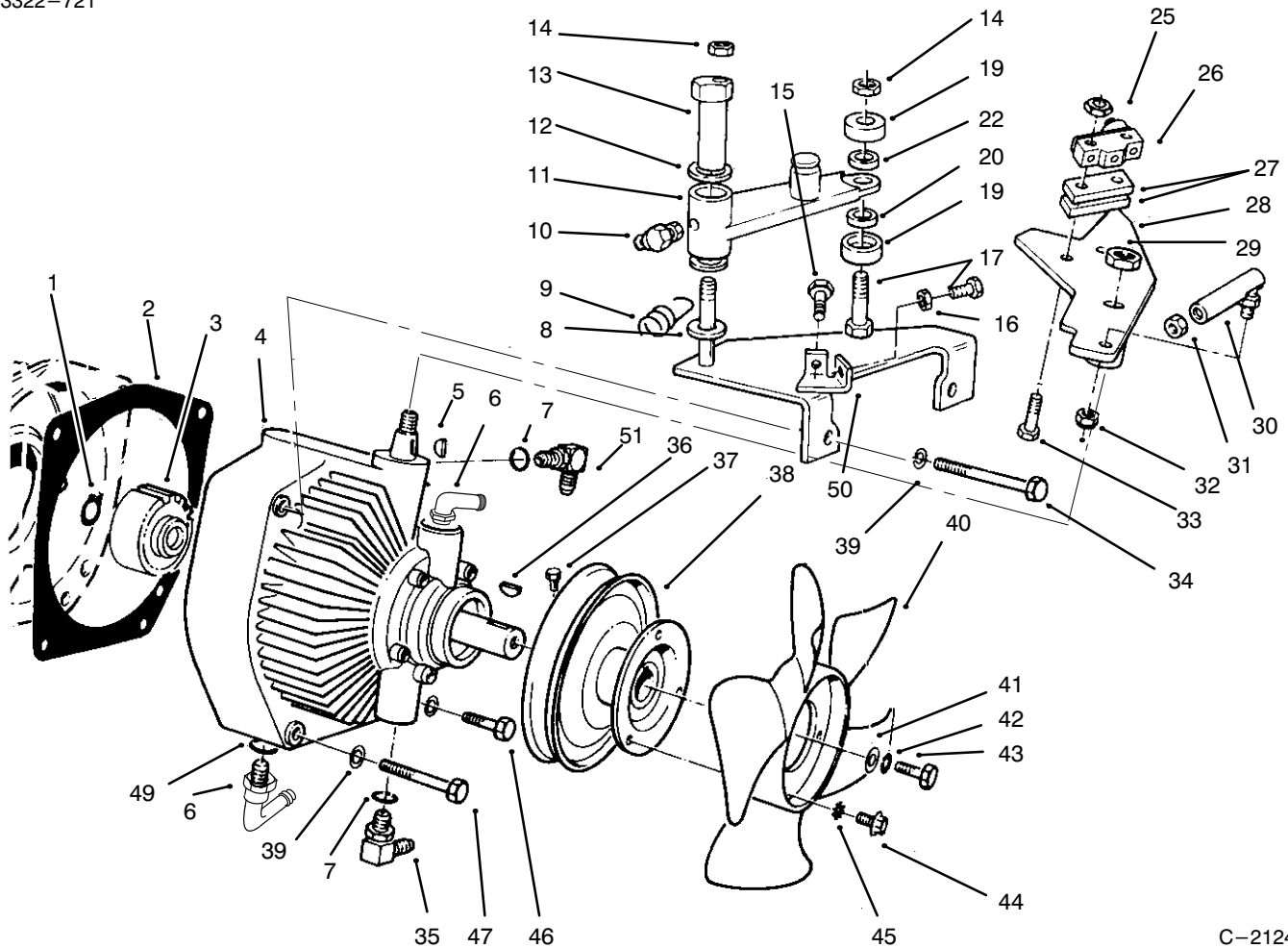


C-2123

DIFFERENTIAL ASSEMBLY

Ref. No.	Part No.	Description	No. Used	Ref. No.	Part No.	Description	No. Used
1	54-2390	Pulley - Output	1	24	251-288	Bearing w/Collar	2
2	3241-1	Screw - Set	4	25	302-49	Fitting - Grease	1
3	60-9130	Bracket - Jackshaft	1	26	3257-5	Key - Woodruff	3
4	3296-29	Nut - Lock	A/R	28	54-2380	Pulley - Input	1
5	322-4	Screw - Hex. Hd.	6	29	54-1600	Jackshaft	1
6	3296-44	Nut - Lock	4	30	3230-1	Bolt - Carriage	6
7	3256-3	Washer - Flat	4	31	251-341	Flange - Bearing	4
8	3245-35	Screw - Set	4	32	32149-1	Nut - Lock	6
9	72-4060	Bearing Assembly	2	35	251-304	Rod End	1
10	323-8	Screw - Hex. Hd.	5	36	324-7	Screw - Hex. Hd.	2
11	322-10	Screw - Hex. Hd.	4	37	251-305	Rod End	1
12	80-3750	Spacer	2	38	3220-4	Nut - Hex. Jam	2
14	3234-1	Screw - Hex. Flange Hd.	5	39	3296-48	Nut - Lock	2
15	59-1620	Bracket - Transaxle	1	40	54-1490	Rod - Steering	1
17	60-8990	Plate - Transaxle	1	41	54-2060	Bellcrank Assembly (Incl. Ref. #25 & 42)	1
18	322-4	Screw - Hex. Hd.	6	42	46-6680	Bushing - Flanged	2
19	76-9430	Spring - Extension	1	43	59-1470	Shaft - Bellcrank	1
20	302-2	Fitting - Grease	2	44	46-8560	Screw - Thread Forming	2
21	98-2850	Differential Asm	1	45	3256-23	Washer - Flat	2
22	54-8970	"U" Bolt	2				
23	92-6273	Bracket - Spring	1				

*Not Illustrated



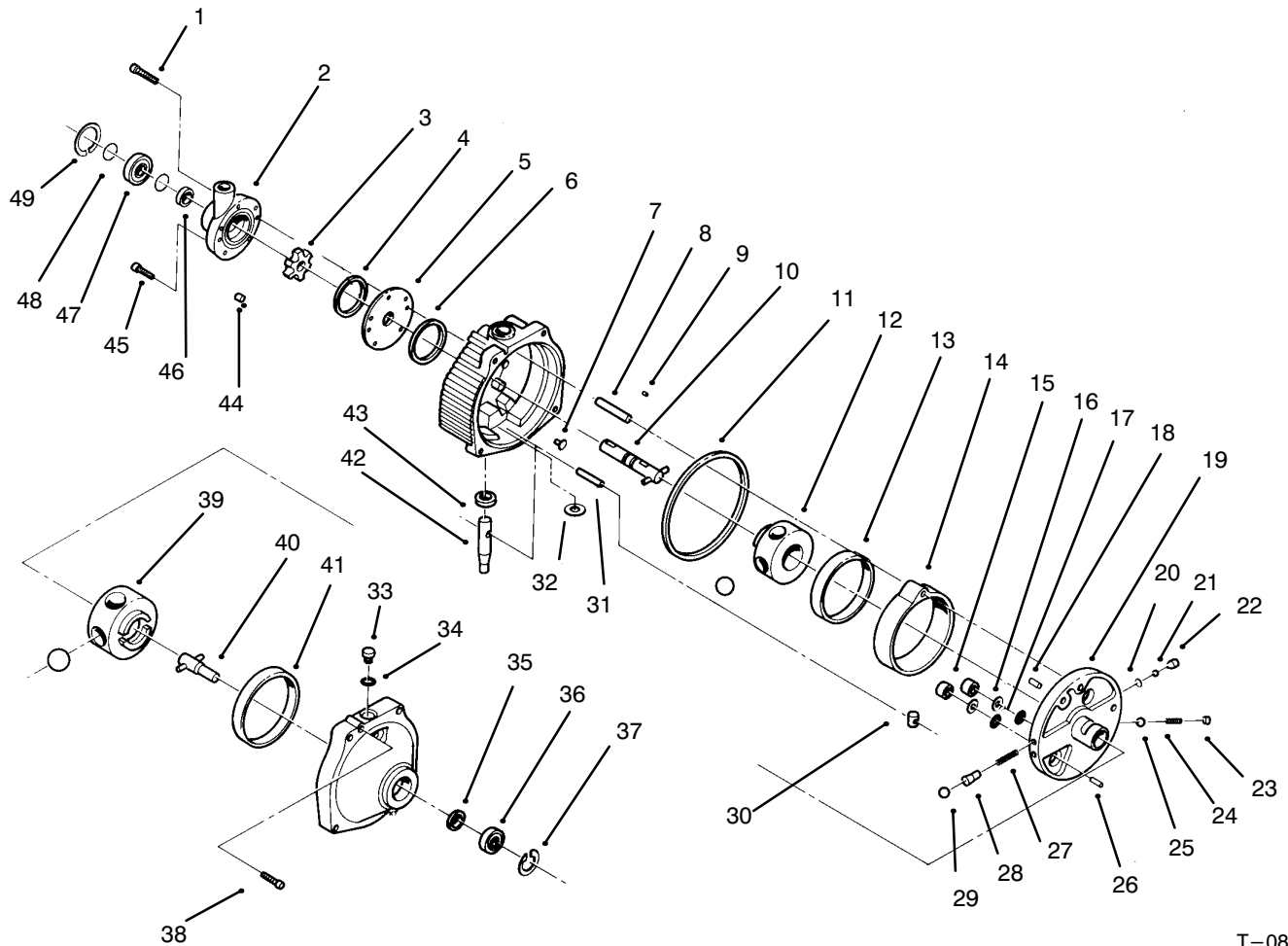
C-2124

TRANSMISSION ASSEMBLY

Ref. No.	Part No.	Description	No. Used
1	32120-64	Ring - Snap	1
2	55-4320	Gasket	
3	54-0320	Gear	1
4	98-0777	Transmission - Hydrostatic	1
5	3257-24	Key - Woodruff	1
6	94-7691	Adapter	2
7	237-79	"O"Ring	2
8	3256-68	Washer	1
9	76-9430	Spring - Extension (Ref.)	
10	302-60	Fitting - Grease 90°	
11	92-6289	Swing Arm Assembly	1
	*	(Incl. 256-113 Bushings (2))	
12	3-6498	Washer	1
13	76-8640	Stud - Traction	1
14	3296-29	Nut - Lock	A/R
15	322-6	Screw - Hex. Hd.	2
16	3217-6	Nut	4
17	322-7	Screw - Hex. Hd.	1
19	251-307	Bearing	2
20	92-6290	Spacer	1
22	75-5470	Spacer Bearing	1
25	3296-9	Nut	2
26	29-6163	Switch	1
27	75-4130	Spacer	2

Ref. No.	Part No.	Description	No. Used
28	92-6269	Lever - Traction	2
29	3296-25	Nut	1
30	2411-34	Joint - Ball	1
31	3220-1	Nut - Hex. Jam	1
32	3296-3	Nut - Lock	1
33	3250-46	Screw	2
34	323-14	Screw - Hex. Hd.	2
35	353-511	Fitting - Hydraulic 90° (Incl. Ref. #7)	1
36	3257-5	Key - Woodruff	3
37	3241-2	Screw - Set	2
38	54-0930	Pulley - Transmission	1
39	3253-5	Washer - Lock	4
40	54-0240	Fan	1
41	3256-55	Washer	1
42	3253-3	Washer - Lock	1
43	321-2	Screw - Hex. Hd.	1
44	32144-19	Screw - Round Hd.	3
45	3255-5	Washer - Lock	3
46	323-13	Screw - Hex. Hd.	1
47	323-16	Screw - Hex. Hd.	1
49	237-80	"O"Ring	2
50	92-6270	Plate - Traction	1
51	340-98	Fitting Hydro	2

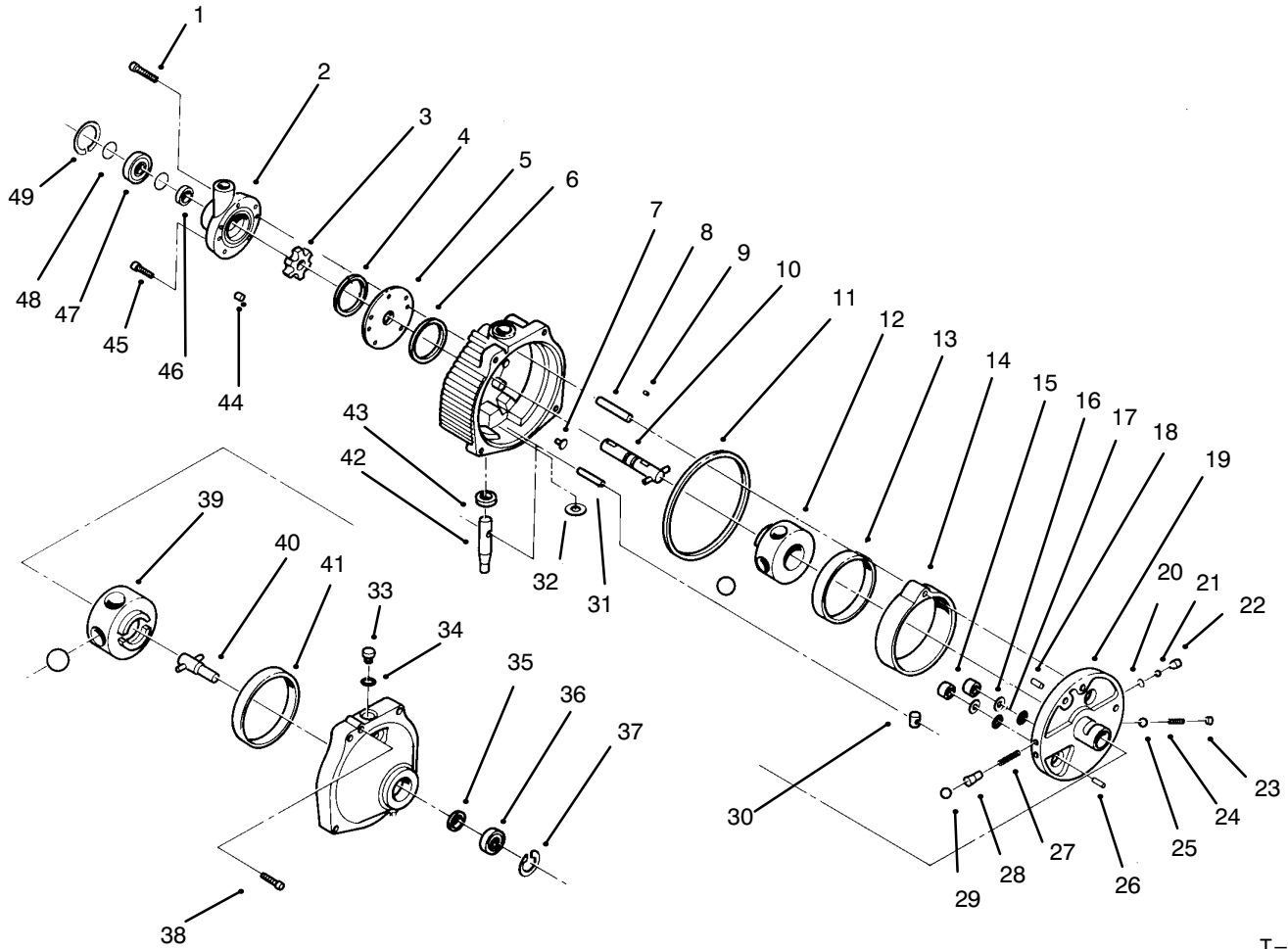
*Not Illustrated



T-0883

HYDROSTATIC TRANSMISSION ASSEMBLY

Ref. No.	Part No.	Description	No. Used	Ref. No.	Part No.	Description	No. Used
1	56-2800	Screw - Hex. Socket Hd.	1	17	56-2970	"O" Ring	2
2	56-2830	Charge Pump Assembly (Incl. Ref. #1)	1	18	56-2980	Pin - Coil	1
3	56-3120	Carrier	1	19	56-2990	Pintle Assembly (Incl. Ref. #15-18, 20, 22-26 & 27-29)	1
4	56-2850	Ring - Seal	1	20	56-3000	Ring - Retaining	2
5	56-2860	Plate - Pump	1	21	56-3010	Ball	2
6	56-2870	Ring - Seal	1	22	56-3020	Body - Check Valve	2
7	56-2880	Button	2	23	56-3050	Plug - Relief Valve	1
8	56-2890	Pin - Dowel	1	24	56-3040	Spring - Relief Valve	1
9	56-2900	Pin - Drive	1	25	56-3030	Ball	1
10	56-2910	Input Shaft Assembly	1	26	56-3060	Pin - Dowel	1
11	56-2920	Ring - Seal	1	27	56-3180	Spring - Valve	2
12	56-2930	Pump Rotor & Ball Assembly	1	28	56-3200	Body - Valve	2
13		Race - Pump	1	29	56-3210	Ball	2
14	56-2940	Cam Ring Assembly (Incl. Ref. #13)	1	30	56-3170	Insert - Cam Ring	1
15	56-2950	Piston	2	31		Dowel	1
16	56-2960	Ring - Backup	2	32		Washer - Control Shaft	1



T-0083

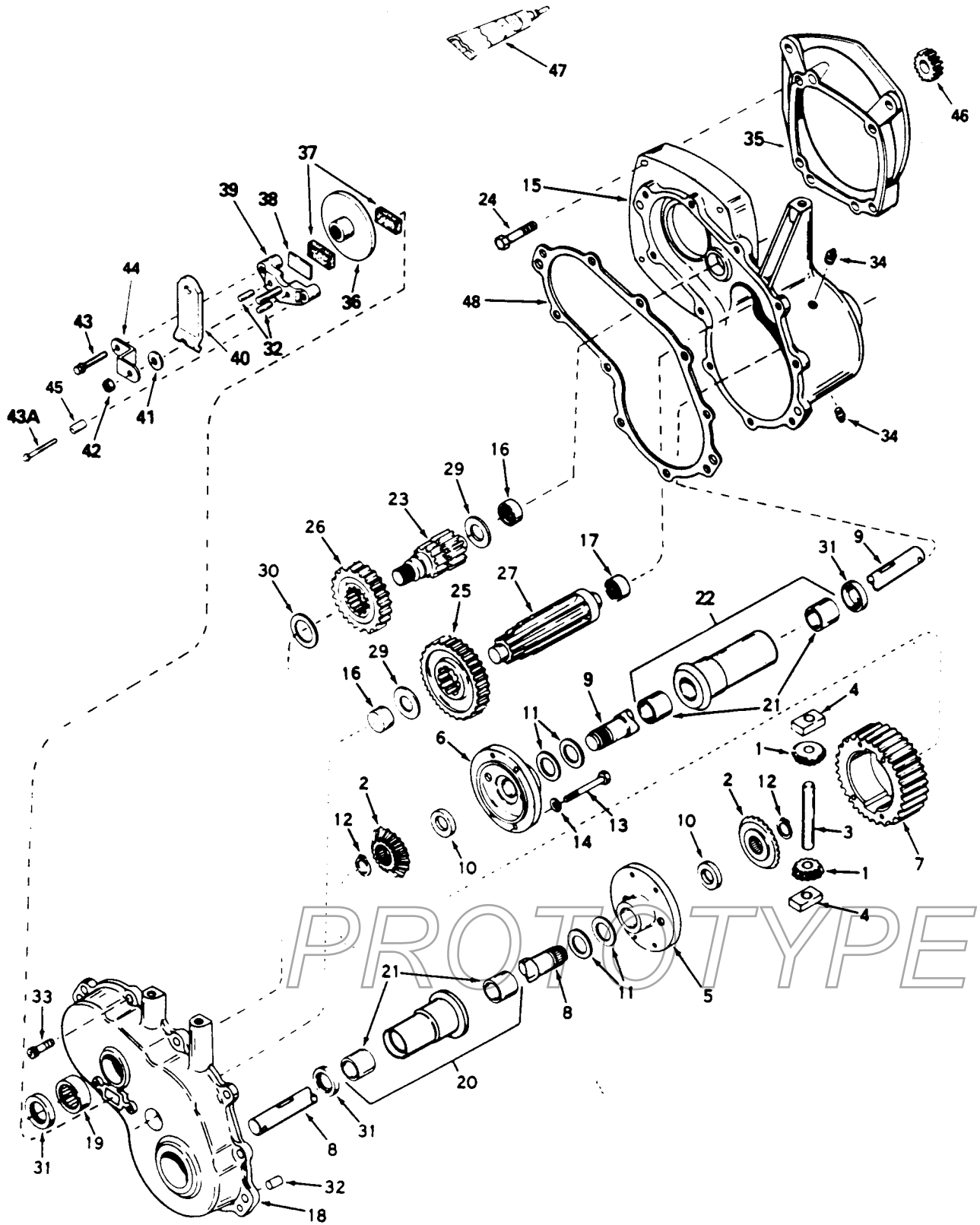
HYDROSTATIC TRANSMISSION ASSEMBLY (Continued)

Ref. No.	Part No.	Description	No. Used
33	56-3250	Plug Assembly (Incl. Ref. #34)	1
34	56-3260	"O"Ring	1
35	56-3270	Seal - Oil	1
36	56-3280	Bearing - Output	1
37	56-3290	Ring - Retaining	1
38	56-3300	Screw - Hex. Socket Hd.	2
39	56-3220	Motor Rotor & Ball Assembly	1
40	56-3230	Output Shaft Assembly	1
41	56-3240	Race - Motor	1
42	56-3140	Control Shaft Kit	1

Ref. No.	Part No.	Description	No. Used
		(Incl. Ref. #31 & 32)	1
43	56-3130	Seal - Oil	1
44	56-3110	Pin - Roll	6
45	56-3100	Screw - Hex. Socket Hd.	4
46	56-2820	Seal - Oil	1
47	56-2810	Bearing - Input	1
48	56-3090	Ring - Retaining	2
49	56-3080	Ring - Retaining	1
*	56-3310	Kit - Overhaul Seal (Incl. Ref. #4, 6, 11, 16, 17, 34, 35, 43 & 46)	1

DIFFERENTIAL ASSEMBLY NO. 1310-005

3322-721



C-1619

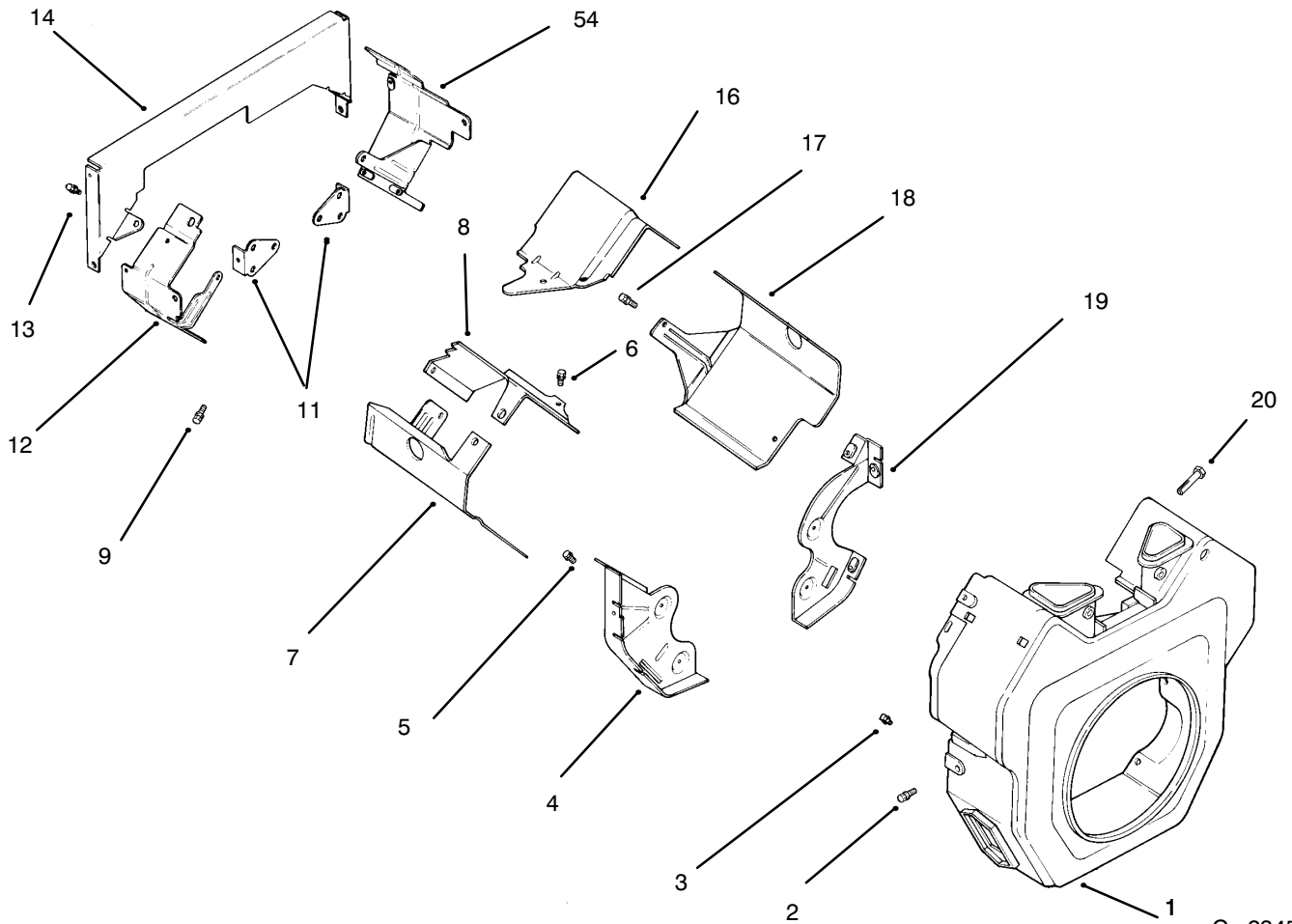
Peerless Differential
Obtain parts from Peerless

DIFFERENTIAL ASSEMBLY NO. 1310-005

Ref. No.	Part No.	Description	No. Used	Ref. No.	Part No.	Description	No. Used
1	778197	Pinion – Bevel	1	25	778036	Gear – Output	1
2	778366	Gear – Bevel	1	26	778037	Gear – Spur	1
3	786019	Pin – Drive	1	27	776244	Shaft – Output	1
4	786027	Block – Drive	1	29	780001	Washer	1
5	774028A	Carrier – Differential	1	30	780090	Washer	1
6	774029A	Carrier – Differential	1	31	788008	Seal – Oil	1
7	778033A	Gear – Ring	1	32	786026	Pin – Dowel	1
8	775036	Axle – 16-5/8"	1	33	792046	Screw – Thread Forming	1
9	775037	Axle – 21-57/64"	1	34	792122	Plug – Pipe	1
10	780107	Washer	1	35	786112	Plate – Adapter	1
11	780042	Washer – Thrust	1	36	790027	Disc – Brake	1
12	792018	Ring – Snap	1	37	790021	Pad – Brake (Pack of 2)	1
13	792020	Screw – Hex. Hd.	1	38	790007	Plate – Brake Pad	1
14	792006	Washer – Lock	1	39	790025	Holder – Brake Pad	1
15	770080A	Case Assembly (Incl. Ref. #16 & 17)	1	40	790010	Lever – Brake	1
16	780013	Bearing – Needle	1	41	792076A	Washer – Flat	1
17	780088	Bearing – Needle	1	42	792075	Nut – Lock	1
18	772085	Cover Assembly (Incl. Ref. #16 & 19)	1	43	792073A	Screw – Thread Forming	1
19	780089	Bearing 0 Needle	1	43A	792085A	Screw – Thread Forming	1
20	782041A	Housing Assembly – 6-5/8" (Incl. Ref. #21)	1	44	786086	Bracket	1
21	780054	Bushing	1	45	786066	Spacer	1
22	782042A	Housing Assembly – 8-5/8" (Incl. Ref. #21)	1	46	778194	Gear – Spur 22T	1
23	776245	Shaft – Brake	1	47	510334A	Gasket Eliminator	1
24	792120	Screw – Hex. Hd.	1	48	788044	Gasket	1
					730229A	Gear Oil	1
					799025	Kit – Axle (Incl. 1,2,8,9,12 &31)	1

PROTOTYPE

Peerless Differential
Obtain parts from Peerless



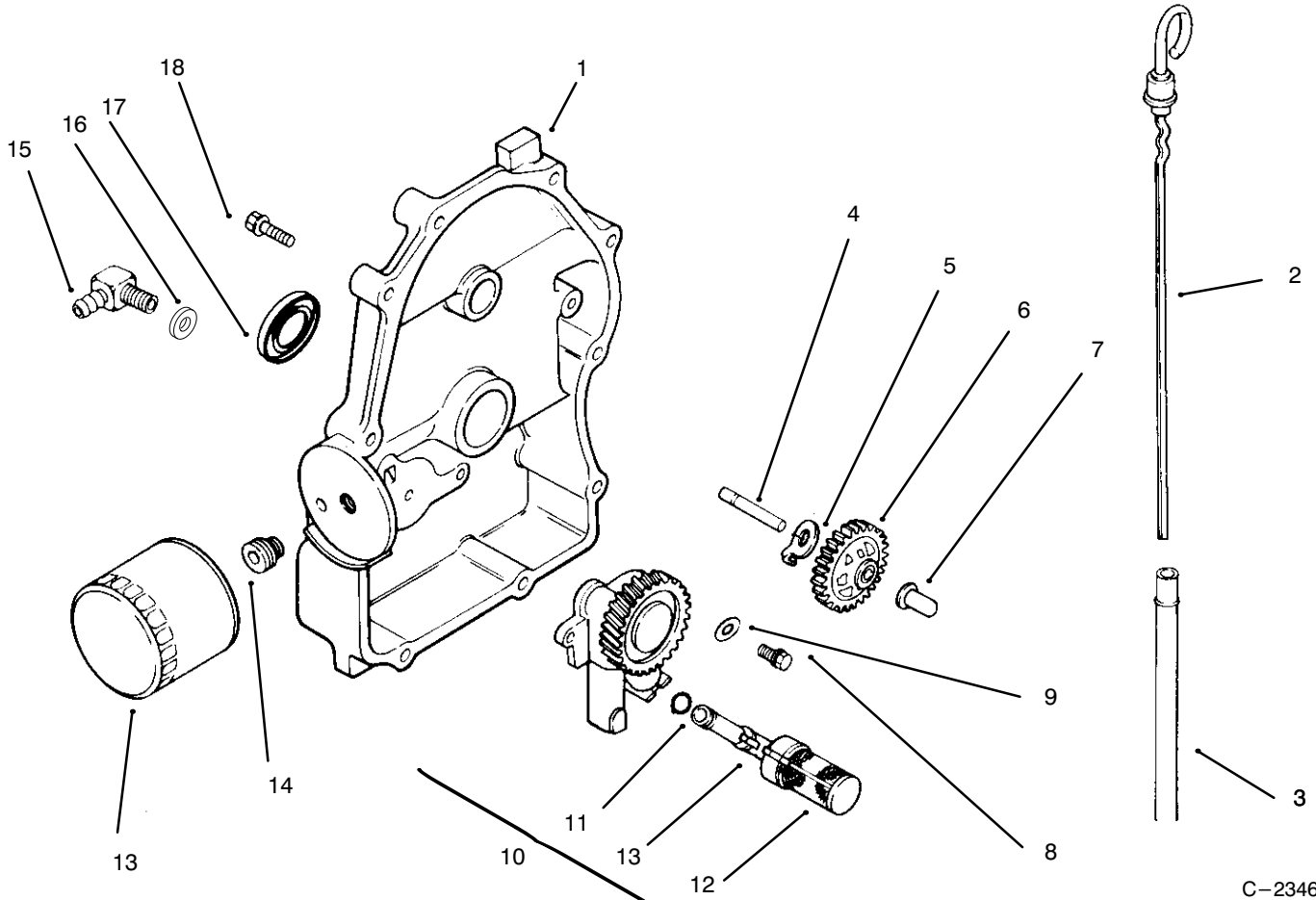
C-2345

BAFFLES & SHROUD

Ref. No.	Part No.	Description	No. Used
1	24 027 21	Housing – Blower	1
2	SM-0545016	Screw	5
3	M-0551016	Screw	1
4	24 146 02	Plate – Backing #2 side	1
5	M-0645016	Screw	4
6	M-0645016	Screw	2
7	24 063 20	Baffle – Cylinder Barrel # 2 side	1
8	24 063 17	Baffle – Valley #2 side	1
9	M-0545010	Screw	2
*10	24 755 14	Kit – "Q" Duct (Incl. Ref. # 11-15)	1
11	24 126 04	Bracket – Support	2

Ref. No.	Part No.	Description	No. Used
12	24 063 12	Baffle, – Ducted Air # 1 side	1
13	M-0639010	Screw	8
14	24 146 04	Plat – Ducted Air Backing	1
15	24 063 13	Baffle – Ducted air # 1 side	1
16	24 063 24	Baffle, Valley 1 side	1
17	SM-0545016	Screw	2
18	24 063 08	Baffle – Cylinder Barrel # 1 side	1
19	24 146 08	Plate – Backing #1 side	1
20	M-0545020	Screw	2

Kohler Engine model CH20QS PS 64556
Obtain parts from Kohler



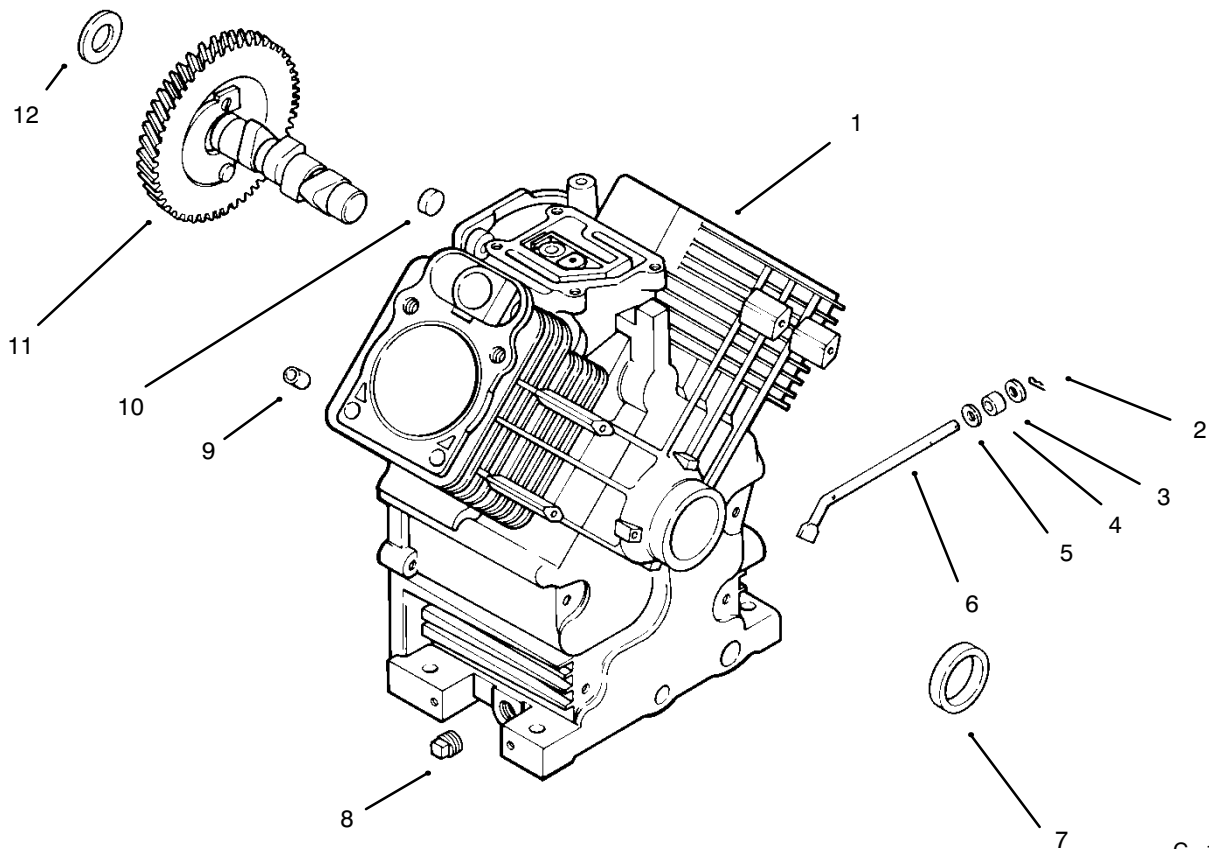
C-2346

OIL PAN/LUBRICATION

Ref. No.	Part No.	Description	No. Used
1	24 009 83	Plate – Closure (Incl. Ref. # 2-7, 10-12, 16 & !7)	1
2	24 038 01	Dipstick	1
3	24 123 04	Tube – Dipstick	1
4	12 144 02	Shaft – Governor Gear	1
5	52 448 02	Tab – Locking	1
6	24 043 12	Kit – Governor Gear Asm (Incl. Ref. # 7)	1
7	12 380 01	Pin – Governor Regulating	1
8	M-0645025	Screw	2
9	M-0631005	Washer – Flat	2

Ref. No.	Part No.	Description	No. Used
10	24 393 03	Oil Pump Assembly (Incl. Ref. # 11-12)	1
11	24 153 01	"O"Ring	1
12	24 381 01	Pick-up, Oil	1
13	12 050 01	Filter – Oil	1
14	24 136 01	Adapter – Oil Filter	1
15	25 155 02	Connector, 90° Hose	1
16	24 153 08	"O"Ring	1
17	52 032 08	Seal – Oil (PTO End)	1
18	24 086 16	Screw	10

*Not Illustrated
 Kohler Engine model CH20QS PS 64556
 Obtain parts from Kohler
 24

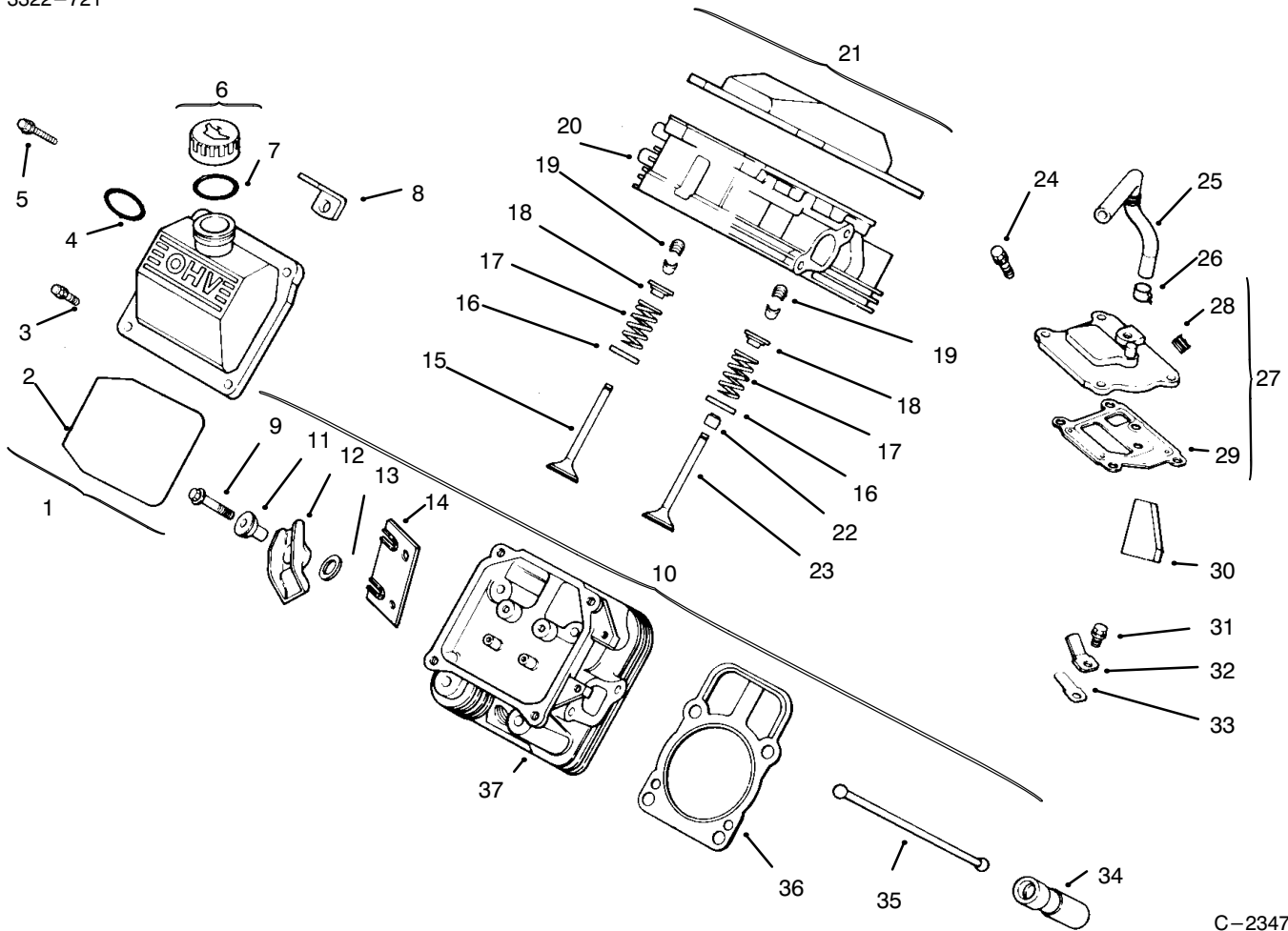


C-1611

CRANKCASE

Ref. No.	Part No.	Description	No. Used	Ref. No.	Part No.	Description	No. Used
1		Cylinder block (Use Miniblock 24 782 01)	1	11	24 012 05	Camshaft	1
2	12 380 04	Pin - Hitch	1	12	12 422 09	Shim - Camshaft, Green	A/R
3	X-25-102	Washer - Plain	1	*	12 422 13	Shim - Camshaft, Black	A/R
4	12 032 01	Seal - Governor Cross Shaft	1	*	12 422 07	Shim - Camshaft, White	A/R
5	X-25-63	Washer	1	*	12 422 08	Shim - Camshaft, Blue	A/R
6	24 144 01	Shaft - Governor Cross	1	*	12 422 10	Shim - Camshaft, Yellow	A/R
7	24 032 01	Seal - Oil	1	*	12 422 11	Shim - Camshaft, Red	A/R
8	X-75-10	Plug, Sq. Hd.	2	*	12 422 12	Shim - Camshaft, Gray	A/R
9	12 380 03	Pin - Dowel	6	*	24 782 01	Short Block	1
10	52 139 09	Plug - Cup	1	*	24 755 03	Set - Gasket	1

*Not Illustrated

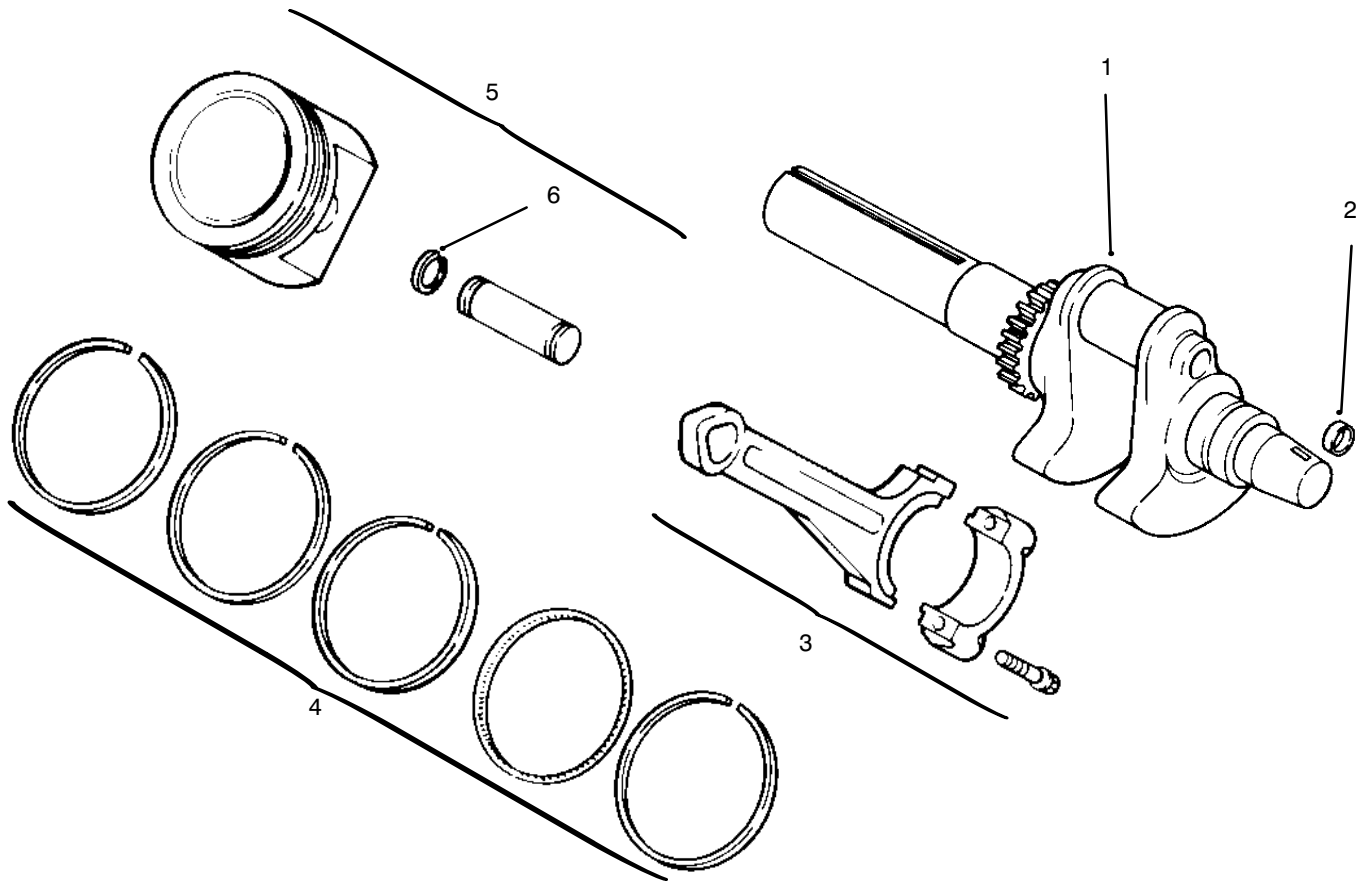


C-2347

CYLINDER HEAD, VALVE & BREATHER

Ref. No.	Part No.	Description	No. Used
1	24 755 75	Kit - Valve Cover (Incl. Ref. #2-4)	1
2	24 153 12	"O"Ring	1
3	24 086 32	Screw - Shoulder	4
4	24 153 09	"O"Ring	1
5	12 086 16	Screw	8
6	25 755 13	Kit - Oil Fill Cap (Incl. Ref. #7)	1
7	12 153 03	"O"Ring	1
8	24 445 01	Strap - Lifting	1
9	M-0640034	Screw	4
10	24 755 61	Kit - Valve Train (Incl. Ref. # 11-14 & 35)	1
11	24 194 02	Pivot - Rocker Arm	4
12	24 186 03	Arm - Rocker	4
13	M-0631005	Washer - Plain	4
14	24 146 09	Plate - Guide	2
15	24 016 01	Valve - Exhaust (Std.)	2
*	24 016 02	Valve - Exhaust (.25)	2
16	235011	Retainer - Spring	4
17	24 089 02	Spring - Valve	4
18	12 173 01	Cap - Valve Spring	4
19	12 755 03	Kit - Retainer	4

Ref. No.	Part No.	Description	No. Used
20	24 318 09	Head Assembly (# 1 Cylinder)	1
21	24 755 74	Kit - Valve Cover (Incl. Ref. # 2 & 3)	1
22	24 032 05	Seal - Valve Stem	2
23	24 017 01	Valve - Intake (Std.)	2
*	24 017 02	Valve - Intake (.25)	2
24	M-0645020	Screw	4
25	24 326 06	Hose - Breather	1
26	X-426-9	Clamp - Breather	1
27	24 033 01	Kit - Breather w/Plug (Incl. Ref. # 28 & 29)	1
28	X-75-23	Plug	1
29	24 041 23	Gasket - Breather	1
30	24 050 01	Filter - Breather	1
31	M-0545010	Screw	1
32	12 018 01	Retainer - Reed	1
33	24 402 03	Reed	1
34	12 351 01	Lifter - Valve	4
35	24 411 04	Rod - Push	4
36	24 041 08	Gasket - Cylinder Head	2
37	24 318 10	Head - Assembly (# 2 Cylinder)	2



C-1613

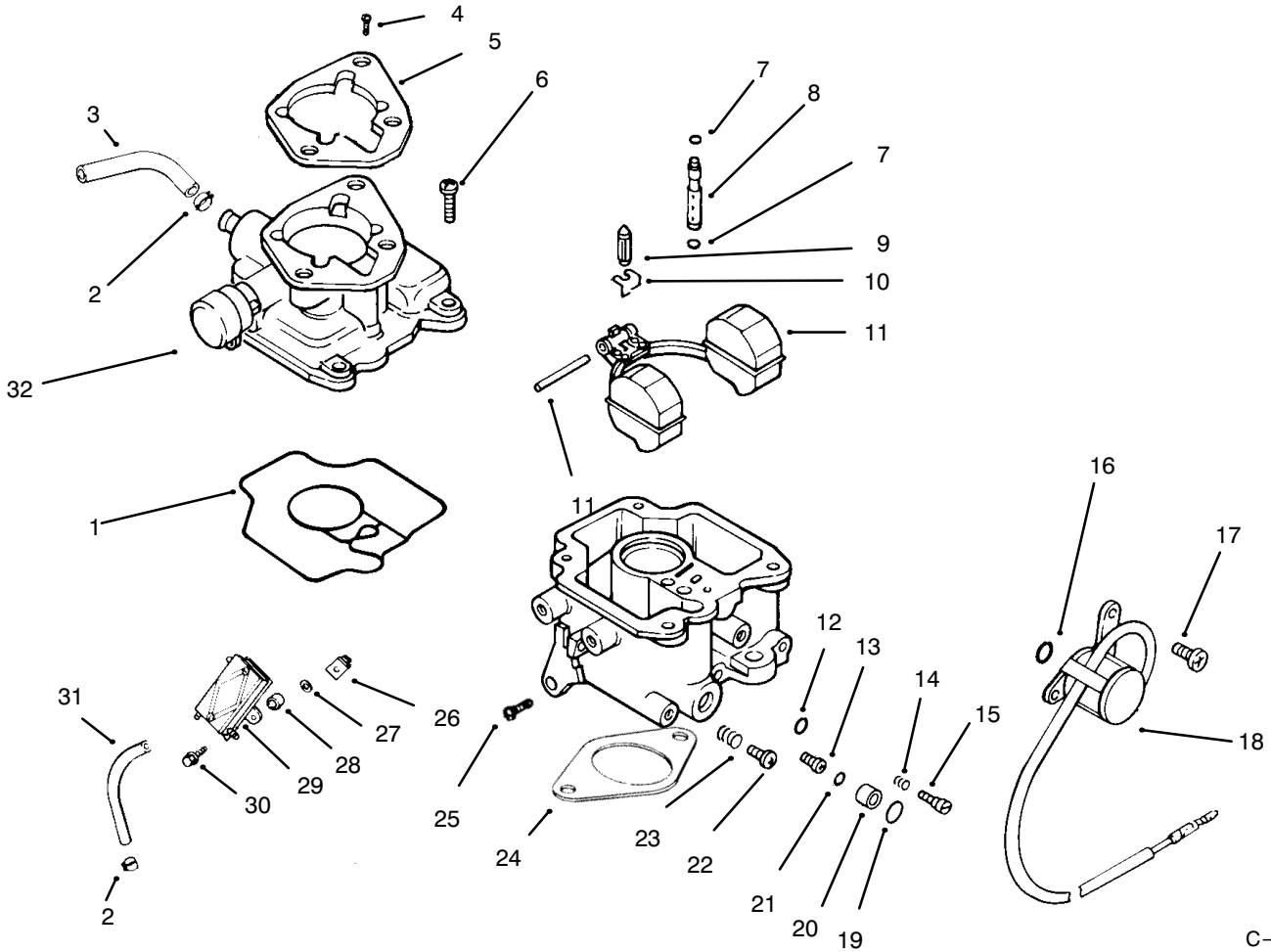
CRANKSHAFT, PISTON AND RINGS

Ref. No.	Part No.	Description	No. Used
1	24 014 32	Crankshaft	1
2	12 139 01	Plug, cup	1
3	24 067 05	Connecting Rod (Std.)	2
*	24 067 06	Connecting Rod (.25)	2
4	24 108 01	Ring Set (Std.)	1
*	24 108 02	Ring Set (.25)	1

Ref. No.	Part No.	Description	No. Used
*	24 108 03	Ring Set (.50)	1
5	24 874 01	Piston w/Ring Set (Std.) (Incl. Ref. # 4-6)	2
*	24 874 02	Piston w/Ring Set (.25)	2
*	24 874 03	Piston w/Ring Set (.50)	2
6	24 018 01	Retainer - Piston Pin	4

PROTOTYPE

*Not Illustrated



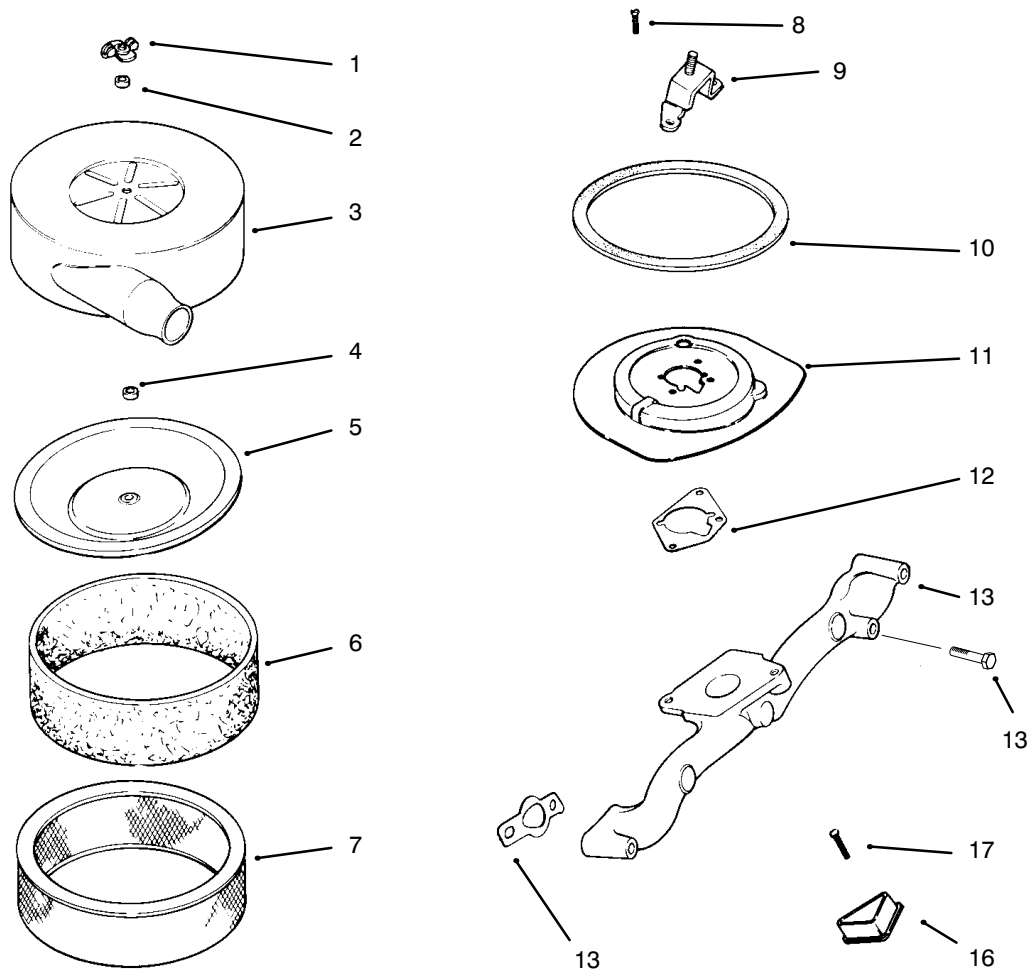
C-2348

CARBURETOR AND FUEL PUMP

Ref. No.	Part No.	Description	No. Used
1	24 041 09	Gasket - Carburetor Body	1
*	24 853 02	Kit - Carburetor w/Gasket (Incl. Ref. #1-15, 19-23 & 29)	1
2	X-426-9	Clamp - Hose	4
3	25 353 10	Line - Fuel 9"	1
4	M-0651030	Screw	2
5	24 041 06	Gasket - Air Cleaner	1
6	24 086 09	Screw	4
7	24 153 02	"O"Ring	2
8	24 337 01	Jet - Slow	1
9	24 462 01	Valve - Inlet Needle	1
10	24 154 01	Clip - Inlet Needle Valve	1
11	24 757 02	Kit - Float Repair	1
12	24 153 03	"O"Ring	1
13	24 337 02	Jet - Main	1
14	24 089 11	Spring - Idle Adjust	1
15	24 368 01	Needle - Idle Adjust	1
16	24 153 04	"O"Ring	1
17	24 086 07	Screw	2
18	24 435 01	Solenoid	1
19	24 153 05	"O"Ring	1
20	24 521 01	Seat - Solenoid	1

Ref. No.	Part No.	Description	No. Used
21	24 153 06	"O"Ring	1
22	24 086 10	Screw - Idle Speed Adjust	1
23	24 089 10	Spring - Idle Speed Adjust	1
24	24 041 17	Gasket - Carburetor	1
25	24 086 05	Screw - Throttle Stop	1
26	24 100 01	Nut	2
27	X-25-52	Washer	2
28	52 112 13	Spacer	2
29	24 393 04	Pump - Fuel, Pulse	1
30	24 086 31	Screw	2
31	24 353 02	Line - Fuel 15-1/2"	1
32	24 757 07	Kit - Choke Repair (Incl. Ref. # 33)	1
*33	24 173 02	Cap - Choke Lever	1
*		Carburetor Assembly (Incl. Ref. # 1-25 & 32)	1
*	24 041 17	Gasket - Carburetor	1
*	24 757 03	Kit - Carburetor Repair	1
*	24 757 01	Kit - Solenoid Assembly	1
*	24 755 01	Kit - High Altitude (1500 meters)	1
*	24 755 02	Kit - High Altitude (3000 meters)	1

*Not Illustrated



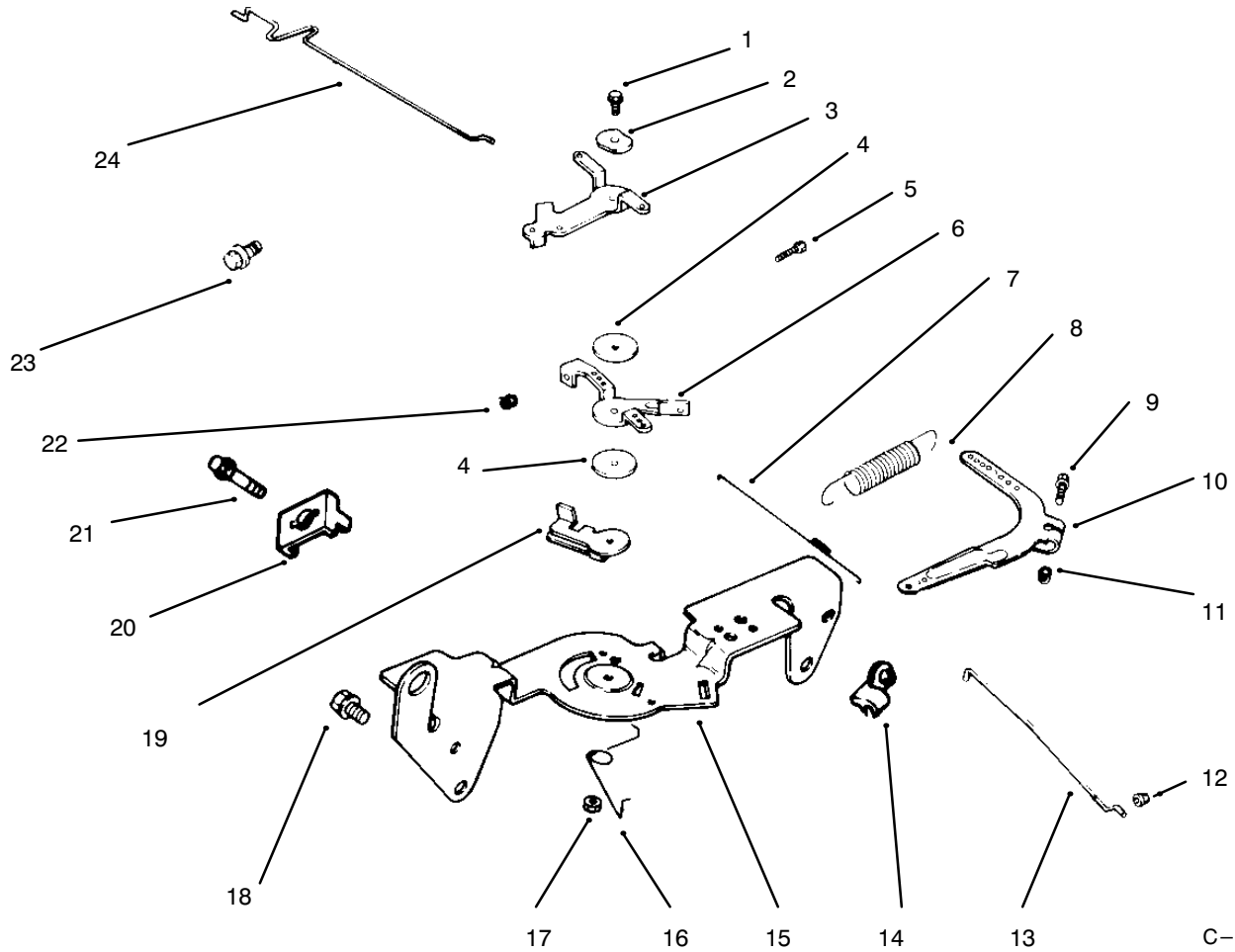
C-2349

AIR INTAKE/FILTRATION

Ref. No.	Part No.	Description	No. Used
1	12 100 01	Nut – Wing	2
2	230046	Seal – Air Filter	1
3	24 096 34	Cover – Air Cleaner	1
4	231032	Seal – Breather	1
5	24 096 01	Cover – Inner Air Cleaner	1
6	24 083 02	Element – Precleaner	1
7	47 083 03	Element – Air Cleaner	1
8	M-0639016	Screw	3
9	24 126 22	Bracket – Air Cleaner	1

Ref. No.	Part No.	Description	No. Used
10	24 032 07	Seal – Air Cleaner	1
11	24 094 05	Base – Air Cleaner	1
12	24 041 06	Gasket – Air Cleaner	1
13	24 041 01	Gasket – Intake Manifold	2
14	M-0639055	Screw	4
15	24 164 14	Manifold	1
16	24 096 17	Cover – Blower Housing	2
17	15 086 09	Screw	2
*	24 113 17	Decal – Maintenance	1

*Not Illustrated



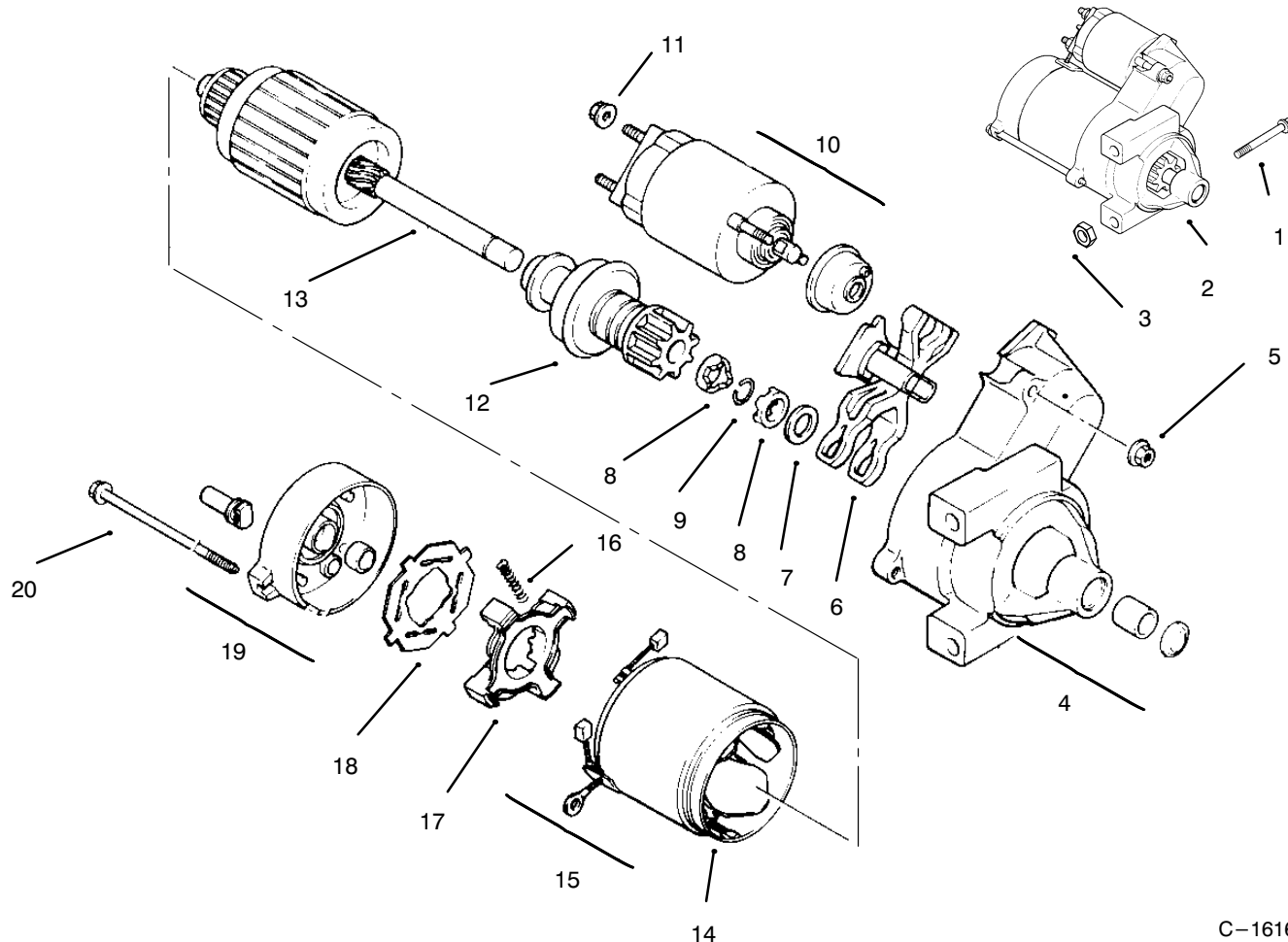
C-1615

THROTTLE LINKAGE AND GOVERNOR CONTROLS

Ref. No.	Part No.	Description	No. Used
1	SM-0545020	Screw	1
2	41 468 03	Washer - Wave	1
3	24 090 05	Lever - Choke	1
4	24 468 01	Washer	3
5	M-0401025	Screw	1
7	24 089 01	Spring - Linkage	1
6	24 090 03	Lever - Throttle Control	1
8	24 089 18	Spring - Governor	1
9	SM-0642025	Screw	1
10	24 090 14	Lever - Governor	1
11	SM-0641060	Nut	1
12	25 158 08	Bushing - Linkage	1

Ref. No.	Part No.	Description	No. Used
13	24 079 01	Linkage - Throttle	1
14	25 158 11	Bushing - Linkage	1
15	24 126 13	Bracket - Control	1
17	M-0547050	Nut	1
16	24 089 03	Spring - Choke Return	1
18	SM-0645016	Screw	4
19	24 090 07	Lever - Throttle Actuator	1
20	12 237 01	Clamp - Cable	2
21	SM-0545016	Screw	2
22	M-0446030	Nut	1
23	SM-0545016	Screw	1
24	24 079 02	Linkage - Choke	1

*Not Illustrated

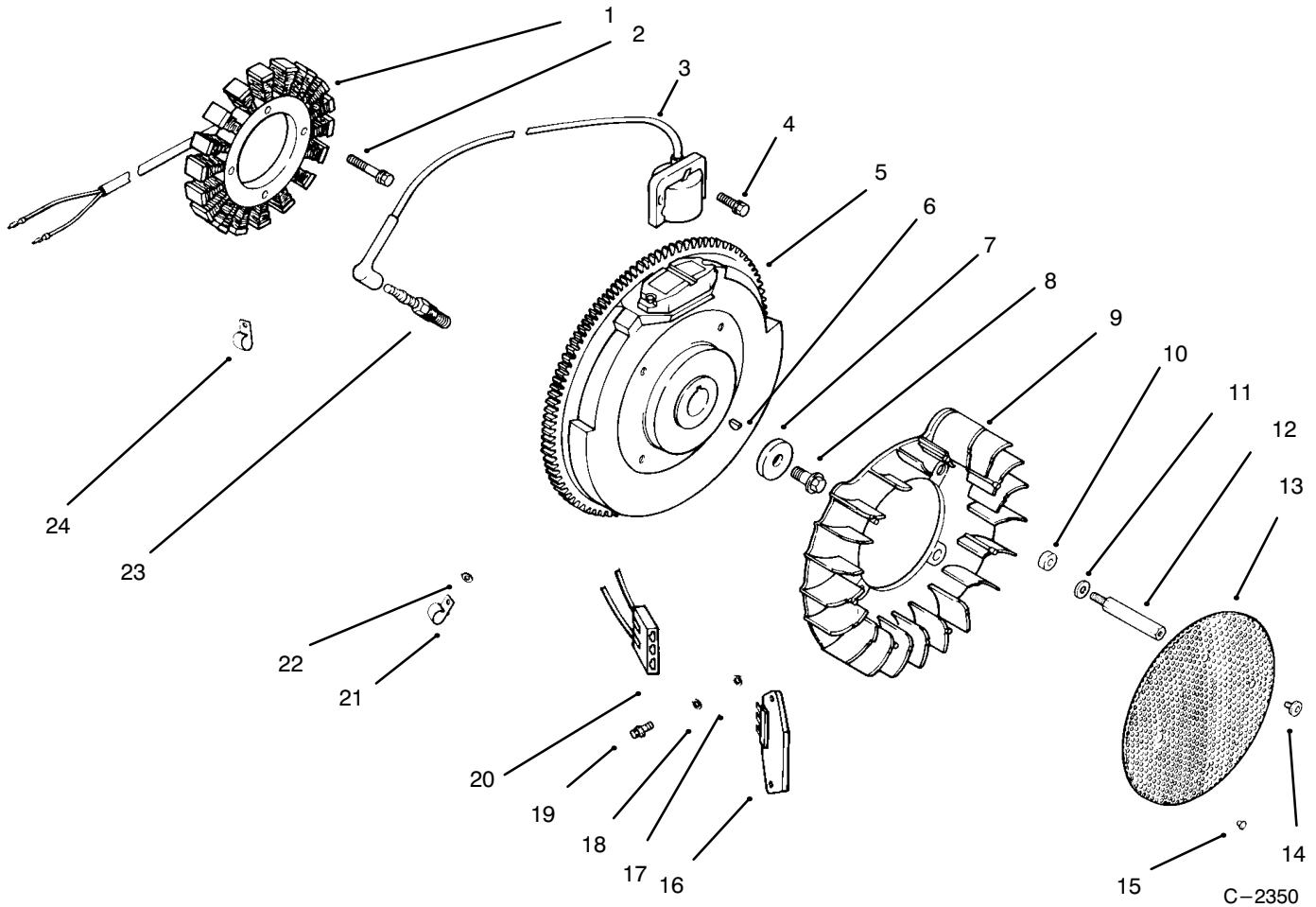


C-1616

STARTER

Ref. No.	Part No.	Description	No. Used
1	SM-0839080	Screw	2
2	24 098 01	Starter - Solenoid Shift (Incl. Ref. # 4-20)	1
3	M-0841080	Nut	1
4	24 081 04	Cap - Drive End	1
5	52 100 10	Nut - Starter	2
6	12 090 10	Lever - Starter Drive	1
7	52 468 14	Washer - Thrust	1
8	52 100 08	Nut - Stop Collar	2
9	52 141 03	Ring - Retainer	1
10	52 435 02	Solenoid	1

Ref. No.	Part No.	Description	No. Used
11	52 100 09	Nut	1
12	12 239 01	Drive - Pinion	1
13	12 170 03	Armature - Starter	1
14	12 471 01	Frame	1
15	52 221 01	Kit - Brush (Incl. Ref. # 16)	1
16	52 089 09	Spring - Brush	4
17	52 323 03	Holder - Brush	1
18	52 168 01	Insulator	1
19	12 301 01	Cap - Commutator End	1
20	52 211 05	Bolt	2

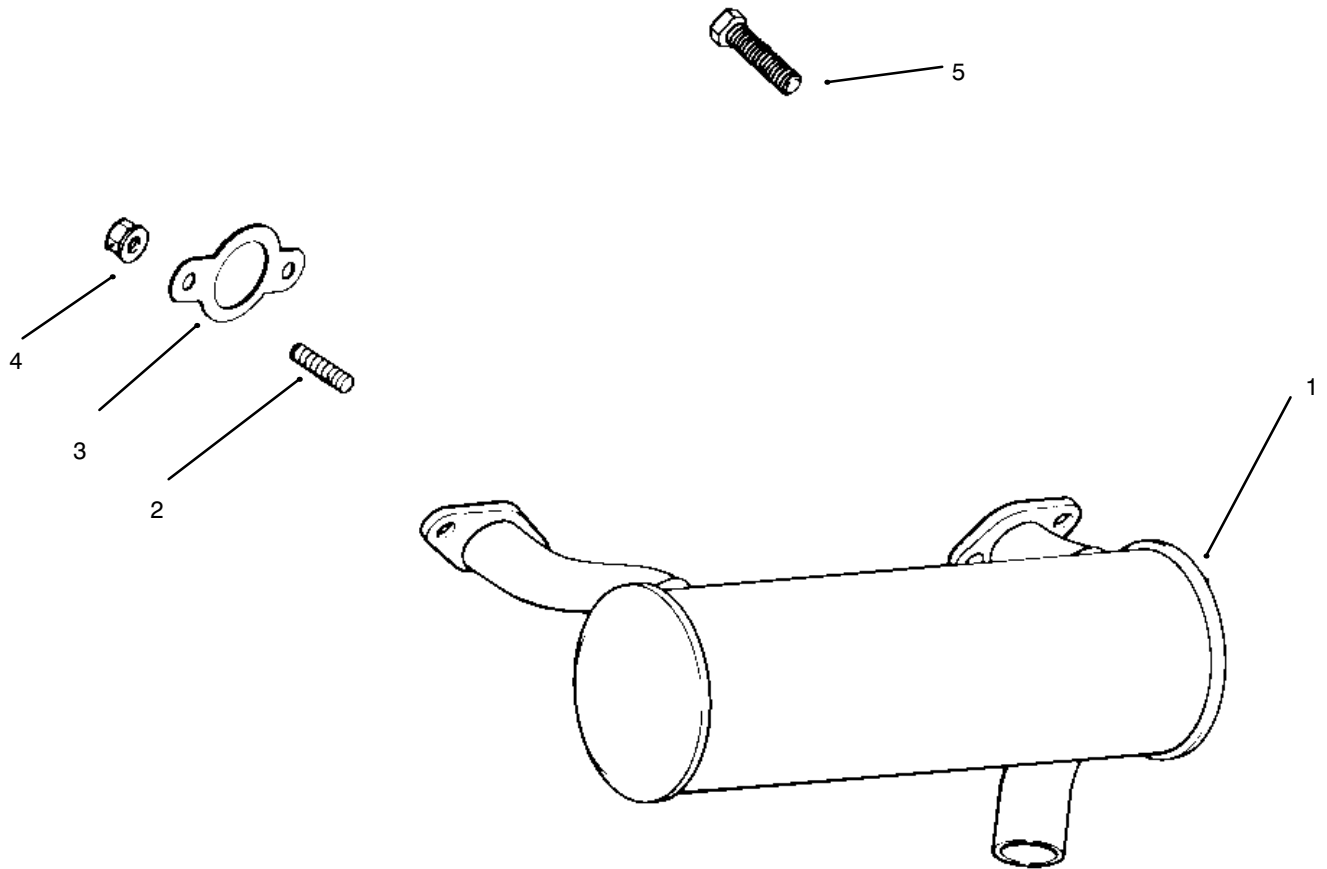


IGNITION AND CHARGING SYSTEM

Ref. No.	Part No.	Description	No. Used
1	24 085 01	Stator - 15 amp	1
2	M-0548025	Screw	2
3	24 584 01	Module - Ignition	2
4	SM-0545020	Screw	4
5	24 025 01	Flywheel Assembly	1
6	X-42-15	Key	1
7	12 468 03	Washer	1
8	12 086 14	Screw	1
9	24 157 01	Fan	1
10	12 112 01	Spacer - Fan	4
11	X-25-53	Washer	4
12	24 072 01	Stud - Grass Screen	4
13	24 162 13	Screen - Grass	1

Ref. No.	Part No.	Description	No. Used
14	M-0657010	Screw	4
15	25 086 43	Screw - Set	1
16	25 403 03	Regulator - Rectifier	1
17	X-25-63	Washer	1
18	X-25-92	Washer	2
19	24 086 18	Screw	2
20	236602	Connector	1
21	235173	Clip - Cable	1
22	X-25-63	Washer	1
23	12 132 02	Spark Plug	2
24	48 154 02	Clip - Cable	1
*	24 176 40	Harness - Wiring	1
*	24 518 04	Lead - Green, 18 Gauge	1

*Not Illustrated



C-1618

EXHAUST

Ref. No.	Part No.	Description	No. Used
1	24 068 11	Muffler	1
2	M-0829033	Stud - Muffler	4
3	24 041 02	Gasket - Exhaust	2

Ref. No.	Part No.	Description	No. Used
4	M-0841080	Nut	4
5	M-0839020	Screw	1

PROTOTYPE

TORO PART NUMBER INDEX

Part No.	Description	Pg. No.	Ref. No.	Qty.	Part No.	Description	Pg. No.	Ref. No.	Qty.
102950	Washer	2	72	1	54-0280	Shaft	11	13	1
105805	Nut	2	73	1	54-0290	Seal Repair Kit	11	*	1
109989	Spacer	8	3	4	54-0300	Piston	11	3	1
113050	Cover - P.T.O. Switch	2	39	1	54-0310	Head	11	6	1
113179	Nut	2	38	1	54-0320	Gear	18	3	1
114263	Spring - Seat	8	9	2	54-0330	Frame - Rear	3	13	1
116716	Switch - Clutch & Brake	2	41	1	54-0450	Axle Stand R.H.	6	60	1
3-6498	Washer	18	12	1	54-0460	Axle Stand - L.H.	5	39	1
3-6498	Washer - Thrust	3	8	5	54-0560	Spindle L. H.	3	22	1
3-6498	Washer - Thrust	2	52	2	54-0570	Spindle R.H.	3	7	1
5-0930	Key	13	21	1	54-0880	Decal - Tunnel	2	47	1
12-1109	Lever - Idler	10	27	1	54-0900	Decal - Lift Control	7	13	1
12-5950	Rod - Battery Support	12	18	1	54-0910	Decal - Warning	5	32	1
14-4109	Hood	12	3	1	54-0920	Decal - Parking Brake	7	1	2
19-1470	Bolt - Shoulder	5	41	2	54-0930	Pulley - Transmission	18	38	1
21-9260	Cover - Dust	1	21	1	54-0960	Spring - Parking Brake	10	42	1
22-8330	Plug	9	19	1	54-1000	Tower - Top	1	24	1
22-8340	Spring	9	21	1	54-1010	Channel - Front	5	45	1
22-8350	Ball	9	22	1	54-1120	Bracket - Filter Head	6	64	1
22-8360	Pin - Cam	9	24	1	54-1130	Link - Idler Anchor	5	22	2
22-8370	Seat - Check Valve	9	23	1	54-1170	Spring - Extension	10	30	1
22-8380	Retainer - Spring	9	3	2	54-1220	Support - Seat R.H.	7	8	1
22-8410	Spring	9	4	1	54-1260	Clamp - Battery	12	9	1
22-8480	Ring - Retaining	9	6	1	54-1270	Bracket - Parking Brake	10	8	1
22-8490	Ring - Retaining	9	7	1	54-1310	Hinge - Seat	7	3	1
22-8500	ORing	9	2	2	54-1340	Link - Steering	2	43	1
23-1120	Washer - Flat	6	58	2	54-1380	JackShaft - VBelt	5	40	1
24-5790	Weight - Rear	3	17	1	54-1380	V-Belt	13	17	1
27-0410	Bolt - Shoulder	5	28	2	54-1390	VBelt - Traction	6	59	1
27-5200	Spacer	9	5	1	54-1390	V-Belt	13	18	1
27-6230	Bolt - Shoulder	10	31	1	54-1410	Spring - Idler	5	21	2
27-9080	Bushing	1	1	3	54-1420	Shaft - Steering	2	30	1
27-9080	Bushing	10	6	4	54-1440	Bracket - Tunnel	2	50	2
27-9080	Bushing	3	31	2	54-1451	Control - Throttle, Choke	1	25	2
28-1120	Plug	9	18	1	54-1470	Footrest - L.H.	2	63	1
28-2480	Washer - Flat	3	2	2	54-1490	Rod - Steering	17	40	1
28-3894	Wire - -Positive	13	29	1	54-1491	Rod - Steering , Rear	3	29	1
28-3940	Collar - Steering Shaft	2	45	2	54-1550	Support - Hood	7	30	1
29-0590	Screen	12	35	1	54-1600	Jackshaft	17	29	1
29-6163	Switch	18	26	1	54-1770	Bracket - Cable Traction	2	64	1
36-3220	Pulley - Idler	10	26	1	54-1810	Plate - Engine, Rear	5	11	4
36-4950	Cap - Oil	12	36	1	54-1830	Support - Shield	5	25	1
37-7250	Spacer	6	53	2	54-1850	Support - Battery	12	16	1
43-5220	Ring - Retaining	11	12	1	54-1860	Stop - Hood Upper	12	6	2
44-8160	Washer - Flat	13	14	1	54-1870	Stop - Hood, Lower	5	31	2
44-8310	Ring - Retaining	14	3	2	54-1880	Strap - Fuel Tank	12	4	2
44-8320	Spring	14	10	3	54-1890	Foam - Tank	12	20	2
44-8330	Spacer - Bearing	14	6	1	54-1900	Tower - Front	1	3	1
44-8340	Collar - Bearing	14	7	1	54-1910	Channel - Side R.H.	5	6	1
44-8360	Field Coil, Rotor & Bearing	14	4	1	54-1920	Channel - Side L.H.	5	33	1
44-8370	Armature & Pulley Assembly	14	5	1	54-1930	Fender R.H.	5	1	1
46-6680	Bushing	3	9	6	54-1940	Fender L.H.	5	36	1
46-6680	Bushing - Flanged	17	42	2	54-1950	Bracket - Support Bearing	1	22	2
46-8091	Screw	12	42	2	54-2000	Pin - Pivot	10	13	1
46-8560	Screw	5	35	7	54-2040	Follower Lever	2	54	1
46-8560	Screw - Hex. Hd.	1	5	21	54-2060	Bellcrank Assembly	17	41	1
46-8560	Screw - Thread Forming	17	44	2	54-2070	Anchor - Spring	5	18	1
47-1980	Cover Steering Shaft	2	31	1	54-2100	Pin - Pivot	10	39	2
48-7610	Screw	13	4	5	54-2110	Lever - Brake	10	2	1
49-6430	Pad - Reverse	1	12	1	54-2120	Link - Parking Brake	10	1	1
49-6470	Pad - Accelerator	1	4	1	54-2160	Bracket - Anchor	13	10	1
51-0780	Slide Seat Assembly R.H.	8	*	1	54-2260	Pad Footrest L.H.	2	62	1
51-0790	Slide Seat Adjust Assembly	8	2	1	54-2270	Pad - Footrest R.H.	2	68	1
53-4430	Decal - Oil	6	51	1	54-2290	Pipe - Exhaust	13	13	1
54-0090	Valve Assembly	7	23	1	54-2330	Pulley - Engine	13	19	1
54-0110	Filter - Transmission Oil	5	44	1	54-2380	Pulley - Input	17	28	1
54-0140	Hub - Wheel	4	2	2	54-2390	Pulley - Output	17	1	1
54-0150	Cylinder - Lift	10	18	1	54-2590	Hydraulic Hose Assembly	16	7	1
54-0220	Assembly - Clutch	13	16	1	54-2610	Hydraulic Hose Assembly	16	5	1
54-0230	Field Assembly	14	1	1	54-2620	Hydraulic Hose Assembly	16	6	1
54-0240	Fan	18	40	1	54-2630	Follower - Steering Shaft	2	53	1
54-0260	Spool	9	1	1	54-2640	Cable - Traction Control	2	44	1

*Not Illustrated

TORO PART NUMBER INDEX (Cont.)

3322-721

Part No.	Description	Pg. No.	Ref. No.	Qty.	Part No.	Description	Pg. No.	Ref. No.	Qty.
54-8970	UBolt	17	22	2	60-9140	Frame - Footrest	2	51	1
55-3570	Cap - Fuel	12	2	1	60-9150	Tunnel	2	66	1
55-3630	Adjustable Relief Valve	9	*	1	61-3610	Decal - Warning	10	29	2
55-3640	Seat - Relief	9	8	1	61-9780	Hub Cap	3	1	2
55-3650	Plug	9	26	1	62-4040	Tank - Fuel	12	15	1
55-4300	Decal	10	43	1	62-4420	Spacer	3	32	81
55-4320	Gasket	18	2		62-4530	Idler - VBelt	5	43	2
55-4860	Guide - Belt	5	37	1	62-4540	Idler - Flat	6	56	2
55-7120	Switch - Brake	10	9	1	62-7400	Decal - Toro	2	70	1
55-7310	Bracket - Idler	10	34	1	63-7590	Relay	7	42	1
55-8660	Assembly - Clamp	13	9	1	63-8360	Key	2	35	2
56-2760	Spring - Extension	10	21	2	63-8440	Decal - Hot Surface	13	5	1
56-2800	Screw - Hex. Socket Hd.	19	1	1	65-5100	Handle	12	41	1
56-2810	Bearing - Input	20	47	1	66-0120	Knob	1	26	2
56-2820	Seal - Oil	20	46	1	66-1570	Frame - Lift	10	14	1
56-2830	Charge Pump Assembly	19	2	1	68-7330	Decal - Danger	12	*	1
56-2850	Ring - Seal	19	4	1	72-4060	Bearing Assembly	17	9	2
56-2860	Plate - Pump	19	5	1	74-0110	Pedal - Traction	1	11	1
56-2870	Ring - Seal	19	6	1	74-0720	Tube - Manual	7	41	1
56-2880	Button	19	7	2	75-4130	Spacer	18	27	2
56-2890	Pin - Dowel	19	8	1	75-5470	Spacer Bearing	18	22	1
56-2900	Pin - Drive	19	9	1	75-6820	Meter - Hour	7	29	1
56-2910	Input Shaft Assembly	19	10	1	76-8640	Stud - Traction	18	13	1
56-2920	Ring - Seal	19	11	1	76-9430	Spring - Extension	17	19	1
56-2930	Pump Rotor & Ball Assembly	19	12	1	76-9430	Spring - Extension (Ref.)	18	9	
56-2940	Cam Ring Assembly	19	14	1	77-0981	Boot - Terminal	12	10	1
56-2950	Piston	19	15	2	77-3100	Decal - Caution	5	7	2
56-2960	Ring - Backup	19	16	2	80-3750	Spacer	17	12	2
56-2970	ORing	19	17	2	80-3760	Support - Seat, Front	7	2	1
56-2980	Pin - Coil	19	18	1	80-4910	Footrest - R.H.	2	69	1
56-2990	Pintle Assembly	19	19	1	80-4920	Pedal - Accelerator	1	8	1
56-3000	Ring - Retaining	19	20	2	80-4930	Footrest - Pedal	1	6	1
56-3010	Ball	19	21	2	82-4640	Battery	12	12	1
56-3020	Body - Check Valve	19	22	2	82-4680	Lever - Valve	7	10	1
56-3030	Ball	19	25	1	82-4700	Bracket - Lever, Valve	7	20	1
56-3040	Spring - Relief Valve	19	24	1	82-4720	Pad - Footrest	2	74	1
56-3050	Plug - Relief Valve	19	23	1	86-9080	Head - Filter	6	63	1
56-3060	Pin - Dowel	19	26	1	88-9830	Switch - Ignition	2	36	1
56-3080	Ring - Retaining	20	49	1	92-5435	Support - Seat L.H.	7	32	1
56-3090	Ring - Retaining	20	48	2	92-6250	Mount - Engine	5	10	1
56-3100	Screw - Hex. Socket Hd.	20	45	4	92-6251	Mount - Engine	5	12	1
56-3110	Pin - Roll	20	44	6	92-6252	Mount - Cylinder	6	47	1
56-3120	Carrier	19	3	1	92-6254	Bar - Tension	5	24	1
56-3130	Seal - Oil	20	43	1	92-6255	Axle - Rear	3	10	1
56-3140	Control Shaft Kit	20	42	1	92-6257	Plate - Pivot	3	24	1
56-3170	Insert - Cam Ring	19	30	1	92-6259	Bracket	7	43	1
56-3180	Spring - Valve	19	27	2	92-6260	Duct - Engine	13	6	1
56-3200	Body - Valve	19	28	2	92-6266	Panel - Tower Rear	2	37	1
56-3210	Ball	19	29	2	92-6267	Shield - Heat	12	21	1
56-3220	Motor Rotor & Ball Assembly	20	39	1	92-6269	Lever - Traction	18	28	2
56-3230	Output Shaft Assembly	20	40	1	92-6270	Plate - Traction	18	50	1
56-3240	Race - Motor	20	41	1	92-6273	Bracket - Spring	17	23	1
56-3250	Plug Assembly	20	33	1	92-6274	Plug - Cap	12	25	1
56-3260	ORing	20	34	1	92-6277	Decal - Switch	2	40	1
56-3270	Seal - Oil	20	35	1	92-6278	Decal - Throttle Choke	2	32	1
56-3280	Bearing - Output	20	36	1	92-6280	Seat	8	1	1
56-3290	Ring - Retaining	20	37	1	92-6281	Plate - Seat	7	12	1
56-3300	Screw - Hex. Socket Hd.	20	38	2	92-6282	Switch - Seat	8	11	1
56-3310	Kit - Overhaul Seal	20	*	1	92-6283	Hose - Fuel	12	24	2
56-3320	THook	10	20	1	92-6284	Plate - Adapter, Seat	8	5	2
56-3370	Bracket - Spring	10	22	2	92-6287	Wire - Ground	13	25	1
56-6590	Screw	7	14	1	92-6288	Decal - Service	12	40	1
56-6920	Bracket - Cable Extension	10	40	1	92-6289	Swing Arm Assembly	18	11	
57-3100	Tie Rod - Steering	3	35	2	92-6290	Spacer	18	20	1
59-1470	Shaft - Bellcrank	17	43	1	92-6291	Decal - Refueling	12	38	1
59-1500	Pivot - Axle	3	19	1	92-6292	Pad - Fender R.H.	5	2	1
59-1550	Pedal - Shaft	2	65	1	92-6293	Pad - Fender L.H.	5	38	1
59-1610	Tube - Grease Fitting	1	14	1	92-6533	Cushion - Replacement	8	*	1
59-1620	Bracket - Transaxle	17	15	1	94-1297	Engine - Kohler 20 HP	13	1	1
60-8990	Plate - Transaxle	17	17	1	94-5410	Decal - Groundsmaster 120	12	37	2
60-9050	Bearing - Steering Shaft	2	46	1	94-5848	Harness - Wire	15	*	1
60-9130	Bracket - Jackshaft	17	3	1	94-5849	Diode	15	*	1

*Not Illustrated

TORO PART NUMBER INDEX (Cont.)

Part No.	Description	Pg. No.	Ref. No.	Qty.	Part No.	Description	Pg. No.	Ref. No.	Qty.
94-7691	Adapter	18	6	2	321-3	Screw	6	49	2
94-7691	Adapter - Hydraulic	12	29	1	321-3	Screw - Hex. Hd.	12	1	2
94-9695	Filter - Fuel	12	26	1	321-3	Screw - Hex. Hd.	1	9	2
98-0777	Transmission - Hydrostatic	18	4	1	321-4	Screw	3	15	4
98-0781	Reservoir - Hydraulic	12	34	1	321-4	Screw	7	36	14
98-0792	Bracket - Idler Mount	6	55	1	321-4	Screw - Hex. Hd.	2	61	9
98-0794	Channel - Middle	5	19	1	321-14	Screw	7	7	2
98-0795	Lever - Idler	6	52	2	321-14	Screw	5	16	2
98-1459	Decal - Toro	2	75	1	321-23	Screw	7	9	2
98-2850	Differential Asm	17	21	1	322-3	Screw	5	30	2
98-2851	Hydraulic Hose Assembly	16	3	2	322-3	Screw - Hex. Hd.	12	5	2
98-2852	Hydraulic Hose Assembly	16	1	1	322-4	Screw	8	4	4
98-2852	Hydraulic Hose Assembly	12	44	1	322-4	Screw	7	6	10
98-2853	Hydraulic Hose Assembly	16	2	1	322-4	Screw	5	26	13
98-2853	Hydraulic Hose Assembly	12	28	1	322-4	Screw	10	33	4
98-2876	Adapter - Hydraulic	12	45	1	322-4	Screw - Hex. Hd.	1	2	19
98-8000	Guard - Tank	13	34	1	322-4	Screw - Hex. Hd.	17	5	6
218-461	Nut - Lock	2	34	1	322-4	Screw - Hex. Hd.	12	17	2
231-122	Tire	4	9	2	322-4	Screw - Hex. Hd.	17	18	6
231-126	Tire	3	5	2	322-5	Screw	8	6	4
232-27	Valve Stem w/Cap	4	7	2	322-6	Screw	5	9	18
232-27	Valve Stem w/Cap	3	36	2	322-6	Screw	10	11	2
233-37	Knob	10	3	1	322-6	Screw - Hex. Hd.	18	15	2
233-37	Knob	7	11	1	322-7	Screw - Hex. Hd.	18	17	1
237-42	ORing	9	20	2	322-10	Screw	4	5	2
237-42	ORing	7	24	2	322-10	Screw - Hex. Hd.	17	11	4
237-78	ORing	10	17	2	322-10	Screw - Hex. Hd.	2	67	2
237-78	ORing	7	19	2	323-7	Screw	5	20	3
237-79	ORing	18	7	2	323-7	Screw - Hex. Hd.	13	35	1
237-80	ORing	12	30	2	323-8	Screw - Hex. Hd.	17	10	5
237-80	ORing	18	49	2	323-9	Screw	13	30	2
237-100	Grommet	12	19	1	323-9	Screw	6	57	2
242-50	Nut	4	6	8	323-10	Screw	10	25	1
242-60	Rim	3	6	2	323-10	Screw - Hex. Hd.	13	22	1
242-71	Bolt - Wheel	4	1	8	323-11	Screw	5	42	2
242-76	Rim	4	8	2	323-12	Screw - Hex. Hd.	13	23	1
2411-34	Ball Joint	1	16	1	323-13	Screw - Hex. Hd.	18	46	1
2411-34	Joint - Ball	18	30	1	323-14	Screw - Hex. Hd.	18	34	2
2412-67	Clamp - Wire	7	47	1	323-16	Screw - Hex. Hd.	18	47	1
2412-93	Clamp - Hose	8	7	1	324-7	Screw	3	27	5
2412-100	JClamp	5	13	2	324-7	Screw - Hex. Hd.	17	36	2
2412-100	RClamp	12	22	3	324-7	Screw - Hex. Hd.	2	58	1
2412-108	Clamp - Hose	12	23	4	324-11	Screw - Hex. Hd.	13	12	1
2412-120	RClamp	7	38	2	325-6	Screw	3	38	2
2412-129	Clamp - Hose	12	43	4	327-24	Screw	6	48	1
251-210	Bearing - Ball	3	3	4	3212-24	Screw - Hex. Hd.	13	15	1
251-288	Bearing w/Collar	17	24	2	3217-6	Nut	18	16	4
251-291	Bearing - Pulley	14	8	1	3217-6	Nut - Square	13	7	1
251-292	Bearing - Field	14	2	1	3220-1	Nut - Hex. Jam	18	31	1
251-304	Rod End	3	33	2	3220-1	Nut - Jam	1	17	1
251-304	Rod End	2	57	1	3220-4	Nut - Hex. Jam	17	38	2
251-304	Rod End	17	35	1	3220-4	Nut - Jam	3	28	3
251-305	Rod End	3	25	3	3220-6	Nut - Jam	10	12	2
251-305	Rod End	17	37	1	3220-19	Nut - Jam	3	34	2
251-307	Bearing	18	19	2	3229-1	Bolt - Carriage	12	11	2
251-341	Flange - Bearing	17	31	4	3230-1	Bolt - Carriage	17	30	6
256-154	Bushing	10	32	2	3230-3	Bolt - Carriage	13	20	1
256-156	Bushing	1	10	2	3234-1	Screw - Hex. Flange Hd.	17	14	5
283-17	Pin - Clevis	7	16	1	3234-14	Screw	5	3	4
283-55	Pin - Clevis	10	23	1	3241-1	Screw - Set	17	2	4
288-10	Cap - Pipe	13	28	1	3241-2	Screw - Set	18	37	2
289-48	Nipple - Pipe	13	27	1	3245-35	Screw - Set	17	8	4
302-2	Fitting - Grease	17	20	2	3250-46	Screw	18	33	2
302-5	Fitting - Grease	3	4	4	3253-3	Washer	10	37	2
302-22	Fitting - Grease	1	13	1	3253-3	Washer - Lock	18	42	1
302-49	Fitting - Grease	3	21	3	3253-3	Washer - Lock	6	50	2
302-49	Fitting - Grease	17	25	1	3253-4	Washer - Lock	13	8	1
302-60	Fitting - Grease 90	18	10		3253-5	Washer - Lock	18	39	4
321-2	Screw	10	36	2	3253-6	Washer - Lock	13	11	2
321-2	Screw - Hex. Hd.	1	27	4	3253-7	Washer	3	39	2
321-2	Screw - Hex. Hd.	18	43	1	3254-5	Washer - Lock	2	33	1
321-3	Screw	8	10	2	3254-6	Washer - Lock, Int. Tooth	13	24	1

*Not Illustrated

TORO PART NUMBER INDEX (Cont.)

3322-721

Part No.	Description	Pg. No.	Ref. No.	Qty.	Part No.	Description	Pg. No.	Ref. No.	Qty.
3255-5	Washer - Lock	18	45	3	3296-29	Nut - Lock	1	18	24
3255-8	Washer - Lock, Ext. Tooth	6	69	1	3296-39	Nut	7	37	1
3256-1	Washer	12	13	4	3296-39	Nut - Lock	13	26	2
3256-1	Washer	10	38	2	3296-41	Nut - Hex.	3	12	1
3256-1	Washer - Flat	7	25	11	3296-42	Nut - Lock	6	65	2
3256-3	Washer - Flat	17	7	4	3296-42	Nut - Lock	12	14	8
3256-3	Washer - Flat	6	54	2	3296-42	Nut - Lock	7	21	19
3256-4	Washer - Flat	3	26	6	3296-42	Nut - Lock	1	23	16
3256-4	Washer - Flat	13	33	1	3296-44	Nut	10	28	1
3256-4	Washer - Flat	2	56	1	3296-44	Nut	5	17	4
3256-9	Washer	3	40	1	3296-44	Nut - Lock	17	6	4
3256-23	Washer - Flat	5	4	8	3296-48	Nut	3	23	5
3256-23	Washer - Flat	7	5	6	3296-48	Nut - Lock	17	39	2
3256-23	Washer - Flat	17	45	2	3296-48	Nut - Lock	2	55	1
3256-23	Washer - Flat	2	49	4	3296-61	Nut	6	46	1
3256-24	Washer - Flat	10	4	2	32103-22	Nut - Wing	12	8	3
3256-51	Washer	7	39	2	32115-5	Nut - Square	2	60	4
3256-55	Washer	18	41	1	32120-64	Ring - Snap	18	1	1
3256-68	Washer	18	8	1	32121-10	Pin - Roll	1	28	1
3257-5	Key - Woodruff	17	26	3	32121-20	Pin - Roll	1	19	1
3257-5	Key - Woodruff	18	36	3	32121-31	Pin - Roll	1	20	2
3257-10	Key - Woodruff	4	3	2	32121-51	Pin - Roll	1	7	1
3257-24	Key - Woodruff	18	5	1	32121-51	Pin - Roll	3	30	1
3272-6	Pin - Cotter	7	15	1	32121-77	Pin Roll	2	59	2
3272-10	Pin - Cotter	10	5	2	32128-20	Nut - Flange Lock	2	48	1
3272-12	Pin - Cotter	3	37	2	32128-20	Nut - Flange Lock	6	67	1
3290-211	Washer - Spring	5	29	2	32128-21	Nut - Lock	13	32	2
3290-250	Pin - Cotter	5	15	2	32144-1	Screw - Thread Forming	10	10	2
3290-355	Pin - Cotter	10	24	1	32144-11	Screw - Thread Forming	5	5	2
3290-357	Nut - Wizz	13	31	1	32144-15	Screw	3	18	2
3290-379	Cable Tie	6	66	7	32144-18	Screw	7	45	2
3290-440	Washer - Belleville	2	42	1	32144-19	Screw - Round Hd.	18	44	3
3296-3	Nut - Hex.	1	15	1	32144-73	Screw	7	40	4
3296-3	Nut - Lock	18	32	1	32149-1	Nut - Lock	5	27	1
3296-6	Nut	10	35	1	32149-1	Nut - Lock	17	32	6
3296-6	Nut - Lock	14	9	3	32151-48	Ring - Retaining	3	11	2
3296-9	Nut	18	25	2	32152-10	Nut - Lock	11	2	1
3296-15	Nut	10	41	2	32153-3	Nut	10	15	2
3296-25	Nut	18	29	1	340-3	Adapter	6	61	2
3296-29	Nut	7	4	12	340-98	Fitting	7	48	1
3296-29	Nut	10	7	6	340-98	Fitting Hydro	18	51	2
3296-29	Nut	5	14	33	353-375	Fitting - 90	10	19	1
3296-29	Nut	3	16	8	353-375	Fitting - 90	7	22	1
3296-29	Nut - Hex.	12	7	9	353-431	Fitting - 45	10	16	1
3296-29	Nut - Lock	17	4	A/R	353-511	Fitting	7	17	1
3296-29	Nut - Lock	4	4	2	353-511	Fitting - Hydraulic 90	18	35	1
3296-29	Nut - Lock	8	8	8	353-545	Fitting	7	18	1
3296-29	Nut - Lock	18	14	A/R					

PROTOTYPE

PRODUCT CHANGES

In an effort to make improvements available to TORO owners as quickly as possible, minor changes are incorporated into Toro's products from time to time that do not become immediately shown in the Parts Catalog. If such a change has been made in your unit, which is not reflected in your manual, see your TORO Distributor or his Authorized TORO Service Dealer for information and part numbers.

IDENTIFICATION AND ORDERING

MODEL AND SERIAL NUMBERS

The Groundsmaster 120 has two identification numbers; a model number and a serial number. The two numbers are stamped on a plate which is located on the main frame under the seat. In any correspondence concerning the Groundsmaster 120, supply model and serial numbers to assure that correct information and replacement parts are obtained.

To order replacement parts from an Authorized TORO Service Dealer, supply the following information:

1. Model and serial number of the Groundsmaster 120.
2. Part number, description, and the quantity of part(s) desired.

NOTE: Do not order by reference number if a parts catalog is being used; use the PART NUMBER.

TABLE OF CONTENTS

Description	Page	Description	Page
Frame And Steering Assembly	1	Differential Assembly (Peerless Differential)	21
Rear Axle Assembly	3	Obtain Parts from Peerless	
Front Wheel Assembly	4	Engine Asm (Kohler Model CH2OQS Spec 64556)	
Frame And Jackshaft Assembly	5	Obtain Parts from Kohler	
Seat Support Assembly	7	Baffles & Shroud	23
Seat Assembly	8	Oil Pan/Lubrication	24
Valve Assembly No.54-0090	9	Crankcase	25
Parking Brake & Frame Assembly	10	Cylinder Head, Valve & Breather	26
Hydraulic Lift Cylinder No. 54-0150	11	Crankshaft, Piston & Rings	27
Hood, Fuel Tank & Hydraulic Reservoir Assembly	12	Carburetor And Fuel Pump	28
Engine Assembly	13	Air Intake / Filtration	29
Clutch Assembly No. 54-0220	14	Throttle Linkage & Governor Control	30
Electric Schematic	15	Starter	31
Hydraulic Schematic	16	Ignition And Charging System	32
Differential Assembly	17	Exhaust	33
Transmission Assembly	18	Numeric Index, Toro P/N Only	34
Hydrostatic Transmission Assembly	19		

Optional equipment

Description	Model No./Part No.	Description	Model No./Part No.
Flotation Kit	30759	44" Grass Collection System	30751
44" Deck Baffle Kit	60-9030	52" Grass Collection System	30576
52" Deck Baffle Kit	68-7210	44" Recycler Kit	30546
44" Leaf Mulcher Deck	30752	52" Recycler Kit	30773
52" Leaf Mulcher Deck	30700	Armrest Kit	30707
Wheel Weight Kit	56-6620	Tire Chain Kit	56-6630
44" Snowthrower	30761	Rear Weight	24-5790
44" Side Discharge Deck	30544	Cab Kit	
48" Rear Discharge Deck	30747		
52" Side Discharge Deck	30753	European Complacence Parts Kit	93-9450

