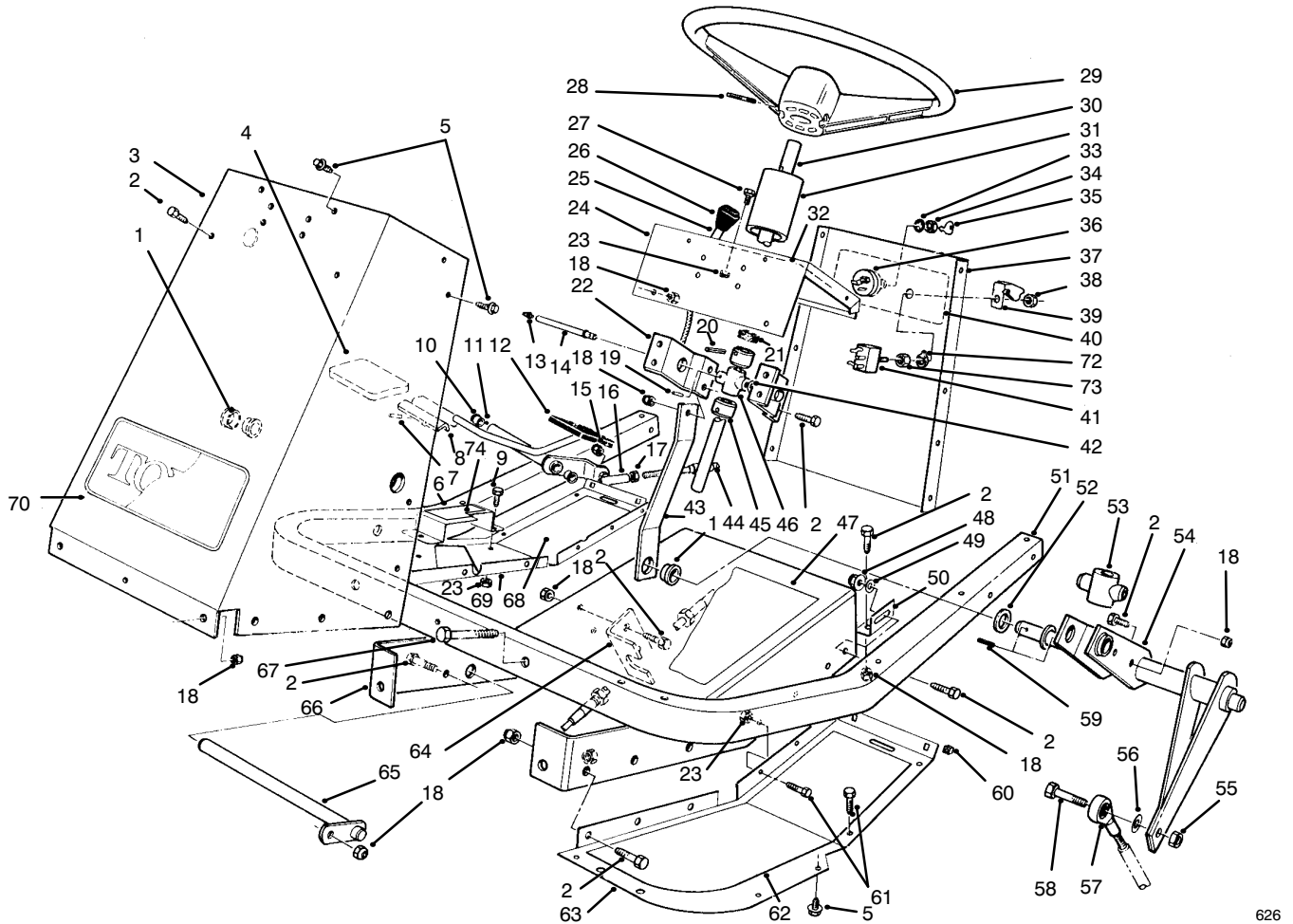




MODEL NO. 30611-990001 &amp; UP

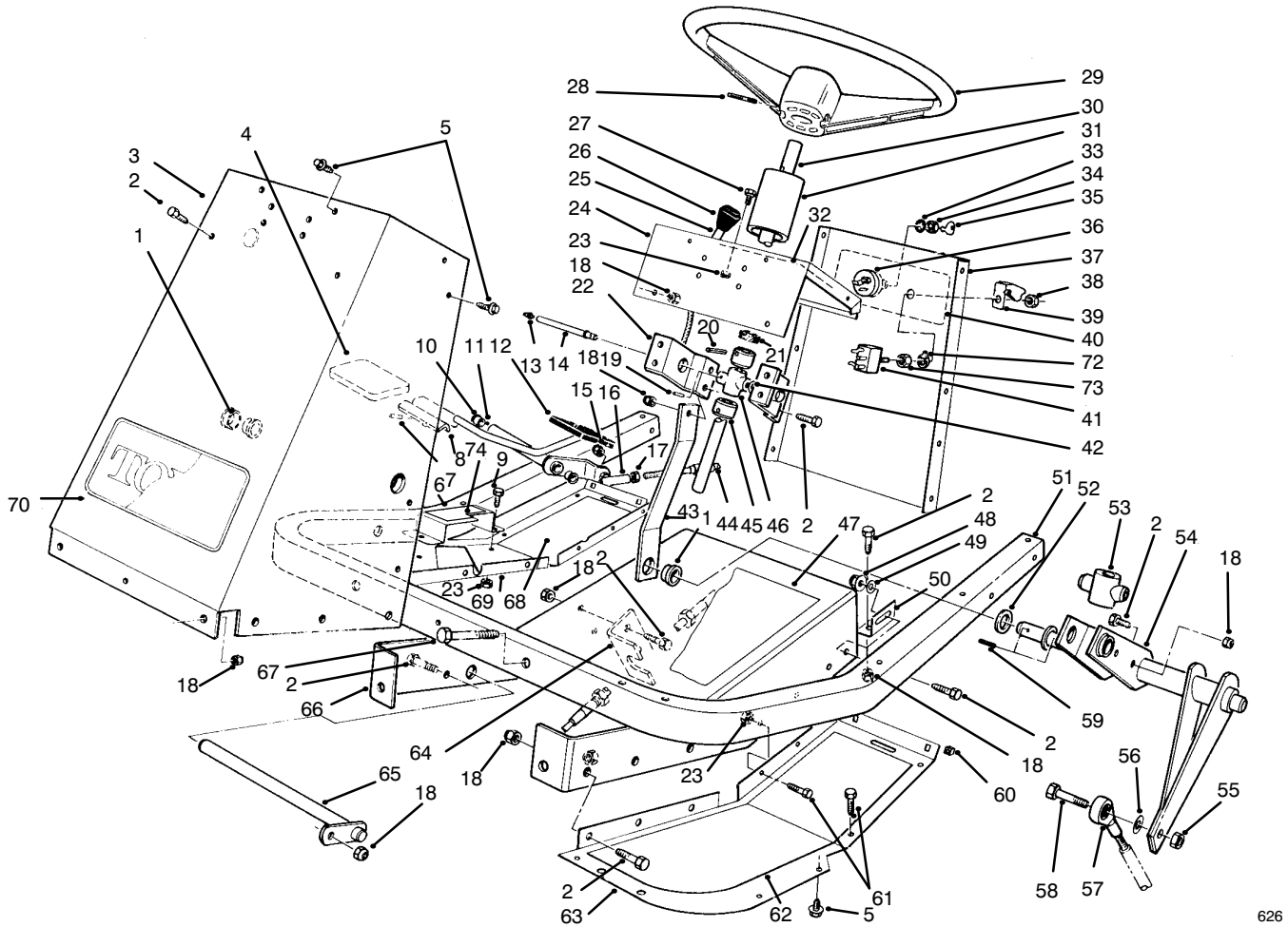
PARTS  
CATALOG

## GROUNDMASTER® 120



## FRAME AND STEERING ASSEMBLY

Ref. No.	Part No.	Description	No. Used	Ref. No.	Part No.	Description	No. Used
1	27-9080	Bushing	3	15	3296-3	Nut - Hex.	1
2	322-4	Screw - Hex. Hd.	19	16	2411-34	Ball Joint	1
3	54-1900	Tower - Front	1	17	3220-1	Nut - Jam	1
4	49-6470	Pad - Accelerator	1	18	3296-29	Nut - Lock	24
5	46-8560	Screw - Hex. Hd.	25	19	32121-20	Pin - Roll	1
6	80-4930	Footrest - Pedal	1	20	32121-31	Pin - Roll	2
7	32121-51	Pin - Roll	1	21	21-9260	Cover - Dust	1
8	80-4920	Pedal - Accelerator	1	22	54-1950	Bracket - Support Bearing	2
9	321-3	Screw - Hex. Hd.	2	23	3296-42	Nut - Lock	16
10	256-156	Bushing	2	24	54-1000	Tower - Top	1
11	74-0110	Pedal - Traction (Incl. Ref. #10)	1	25	54-1451	Control - Throttle, Choke	2
12	49-6430	Pad - Reverse	1	26	66-0120	Knob	2
13	302-22	Fitting - Grease	1	27	321-2	Screw - Hex. Hd.	4
14	59-1610	Tube - Grease Fitting	1	28	32121-10	Pin - Roll	1

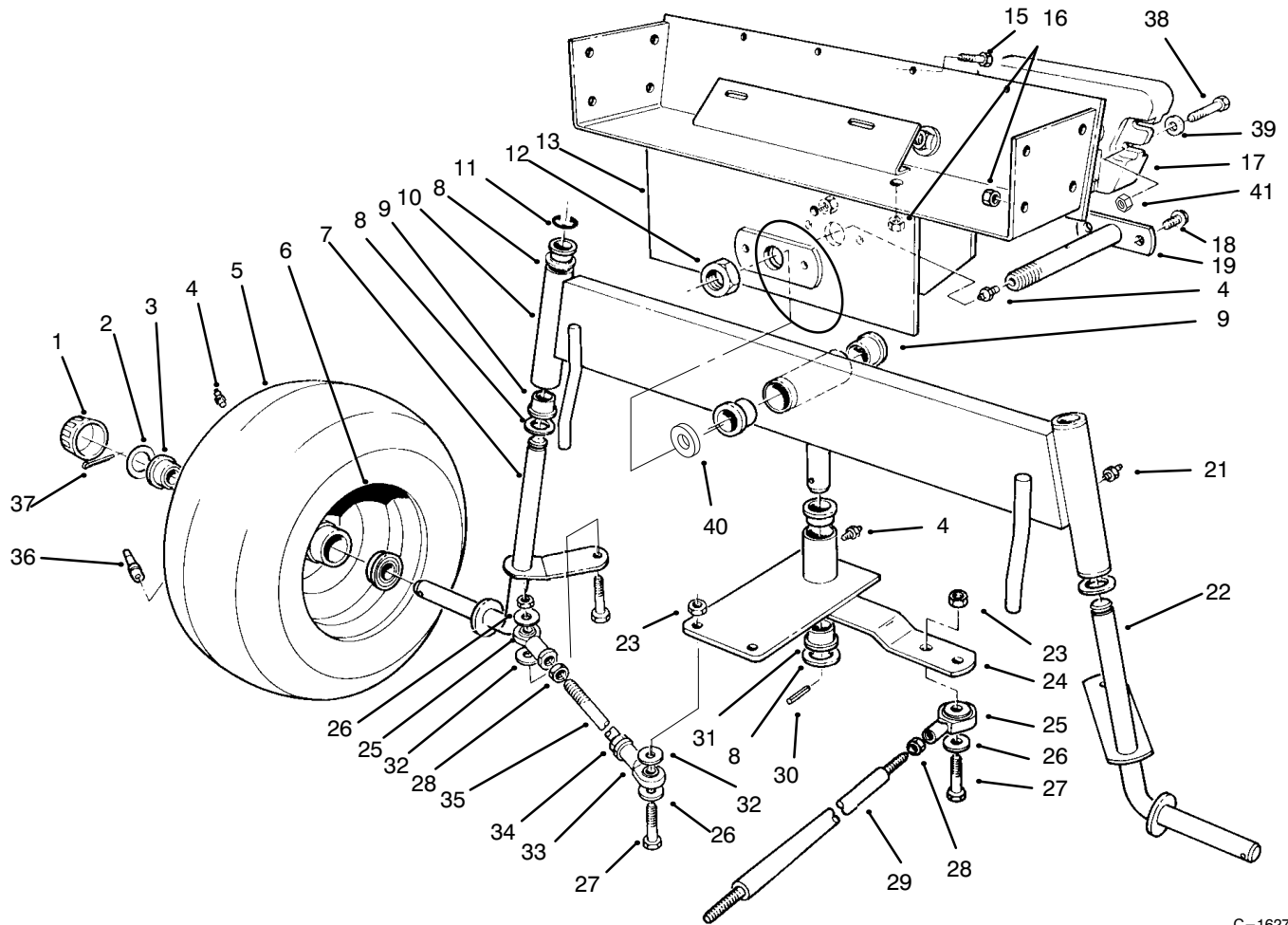


626

## FRAME AND STEERING ASSEMBLY

Ref. No.	Part No.	Description	No. Used
29	88-3850	Wheel - Steering	1
30	54-1420	Shaft - Steering	1
31	47-1980	Cover Steering Shaft	1
32	93-7281	Decal - Throttle Choke	1
33	3254-5	Washer - Lock	1
34	218-461	Nut - Lock	1
35	63-8360	Key	2
36	88-9830	Switch - Ignition (Incl. Ref. #33-35)	1
37	92-6266	Panel - Tower Rear	1
38	113179	Nut	1
39	113050	Cover - P.T.O. Switch	1
40	93-7284	Decal - Switch	1
41	116716	Switch - Clutch & Brake (Incl. Ref. # 38, 72 & 73)	1
42	3290-440	Washer - Belleville	1
43	54-1340	Link - Steering	1
44	54-2640	Cable - Traction Control	1
45	28-3940	Collar - Steering Shaft	2
46	60-9050	Bearing - Steering Shaft	1
47	93-7306	Decal - Tunnel	1
48	32128-20	Nut - Flange Lock	2
49	3256-23	Washer - Flat	4
50	54-1440	Bracket - Tunnel	2

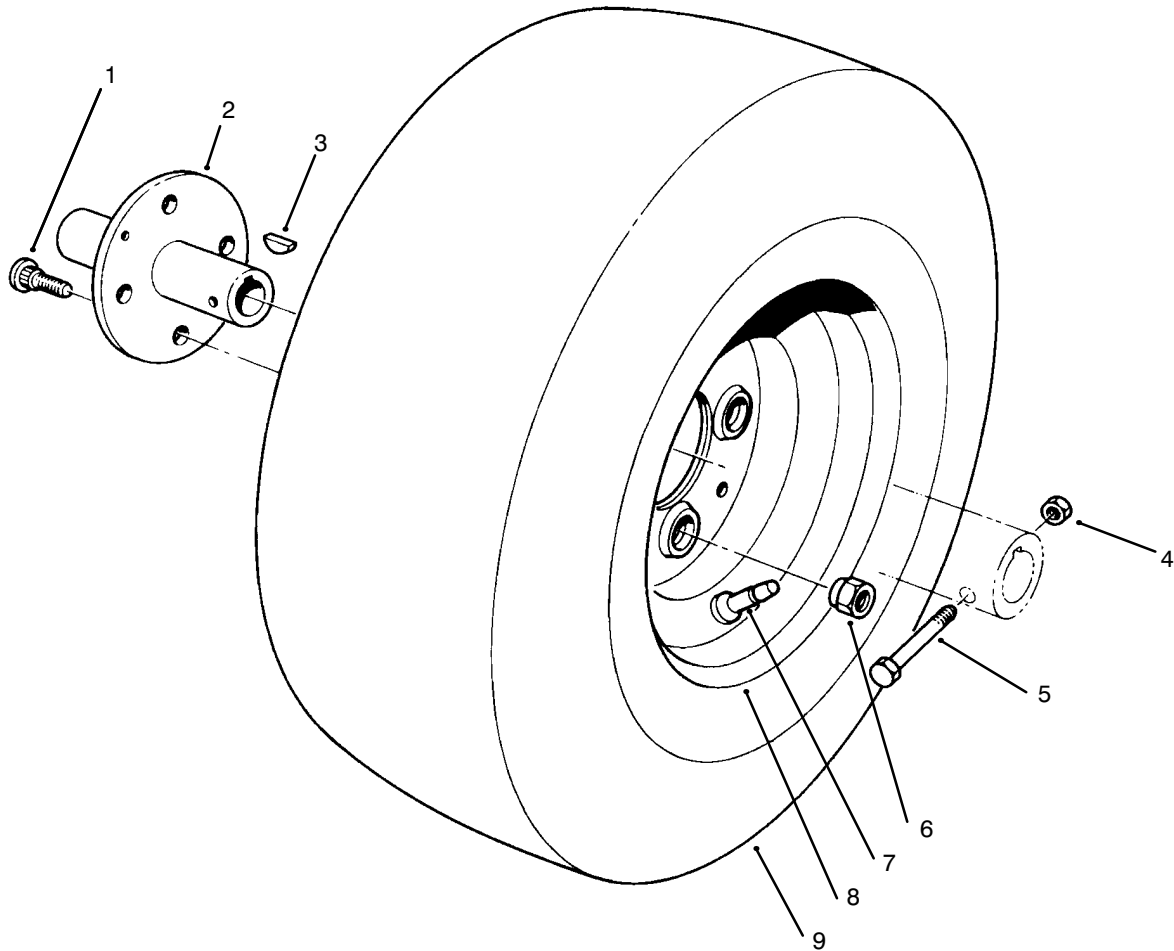
Ref. No.	Part No.	Description	No. Used
51	60-9140	Frame - Footrest	1
52	3-6498	Washer - Thrust	2
53	54-2630	Follower - Steering Shaft	1
54	54-2040	Follower Lever	1
55	3296-48	Nut - Lock	1
56	3256-4	Washer - Flat	1
57	251-304	Rod End	1
58	324-7	Screw - Hex. Hd.	1
59	32121-77	Pin Roll	2
60	32115-5	Nut - Square	4
61	321-4	Screw - Hex. Hd.	14
62	54-2260	Pad Footrest L.H.	1
63	54-1470	Footrest - L.H.	1
64	54-1770	Bracket - Cable Traction	1
65	59-1550	Pedal - Shaft	1
66	60-9150	Tunnel	1
67	322-10	Screw - Hex. Hd.	2
68	54-2270	Pad - Footrest R.H.	1
69	80-4910	Footrest - R.H.	1
70	62-7400	Decal - Toro	1
72	102950	Washer	1
73	105805	Nut	1
74	82-4720	Pad - Footrest	1



C-1627

## REAR AXLE ASSEMBLY

Ref. No.	Part No.	Description	No. Used	Ref. No.	Part No.	Description	No. Used
1	61-9780	Hub Cap	2	23	3296-48	Nut	5
2	28-2480	Washer - Flat	2	24	92-6257	Plate- Pivot (Incl. Ref. #4 & 30)	1
3	251-210	Bearing - Ball	4	25	251-305	Rod End	3
4	302-5	Fitting - Grease	4	26	3256-4	Washer - Flat	7
5	231-126	Tire	2	27	324-7	Screw	5
6	242-60	Rim	2	28	3220-4	Nut - Jam	3
7	54-0570	Spindle R.H.	1	29	54-1491	Rod - Steering, Rear	1
8	3-6498	Washer - Thrust	5	30	32121-51	Pin - Roll	1
9	46-6680	Bushing	6	31	27-9080	Bushing	2
10	92-6255	Axle - Rear (Incl. Ref. #9 & 20)	1	32	62-4420	Spacer	9
11	32151-48	Ring - Retaining	2	33	251-304	Rod End	2
12	3296-41	Nut - Hex.	1	34	3220-19	Nut - Jam	2
13	54-0330	Frame - Rear	1	35	57-3100	Tie Rod - Steering	2
15	321-4	Screw	4	36	232-27	Valve Stem w/Cap	2
16	3296-29	Nut	8	37	3272-12	Pin - Cotter	2
17	24-5790	Weight - Rear	3	38	325-6	Screw	6
18	32144-15	Screw	2	39	3253-7	Washer	6
19	59-1500	Pivot - Axle	1	40	3256-39	Washer	1
21	302-49	Fitting - Grease	3	41	3296-25	Nut	4
22	54-0560	Spindle L. H.	1				

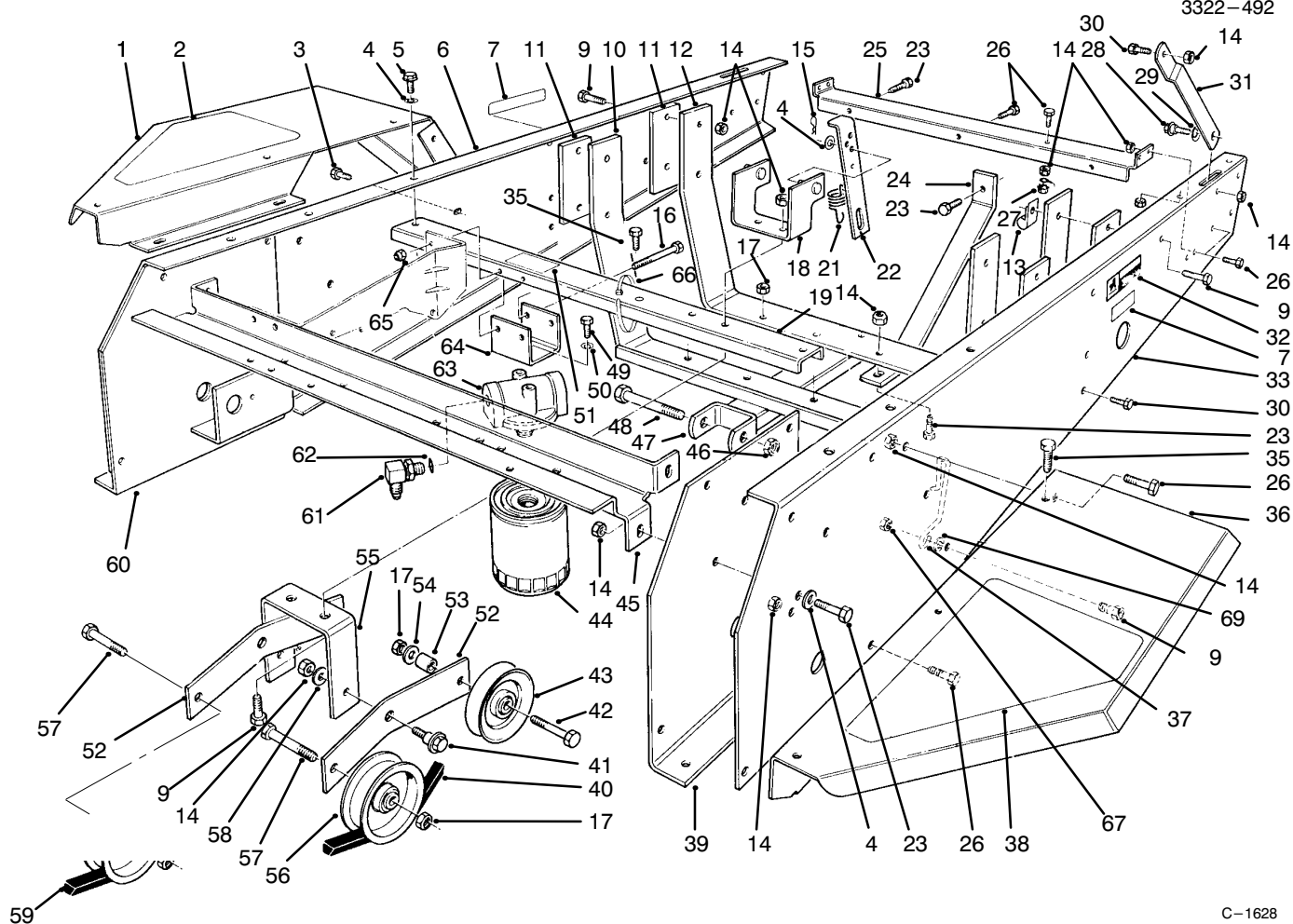


T-0071

## FRONT WHEEL ASSEMBLY

Ref. No.	Part No.	Description	No. Used
1	242-71	Bolt - Wheel	8
2	54-0140	Hub - Wheel	2
3	3257-10	Key - Woodruff	2
4	3296-29	Nut - Lock	2
5	322-10	Screw	2

Ref. No.	Part No.	Description	No. Used
6	242-50	Nut	8
7	232-27	Valve Stem w/Cap	2
8	242-76	Rim	2
9	231-122	Tire	2

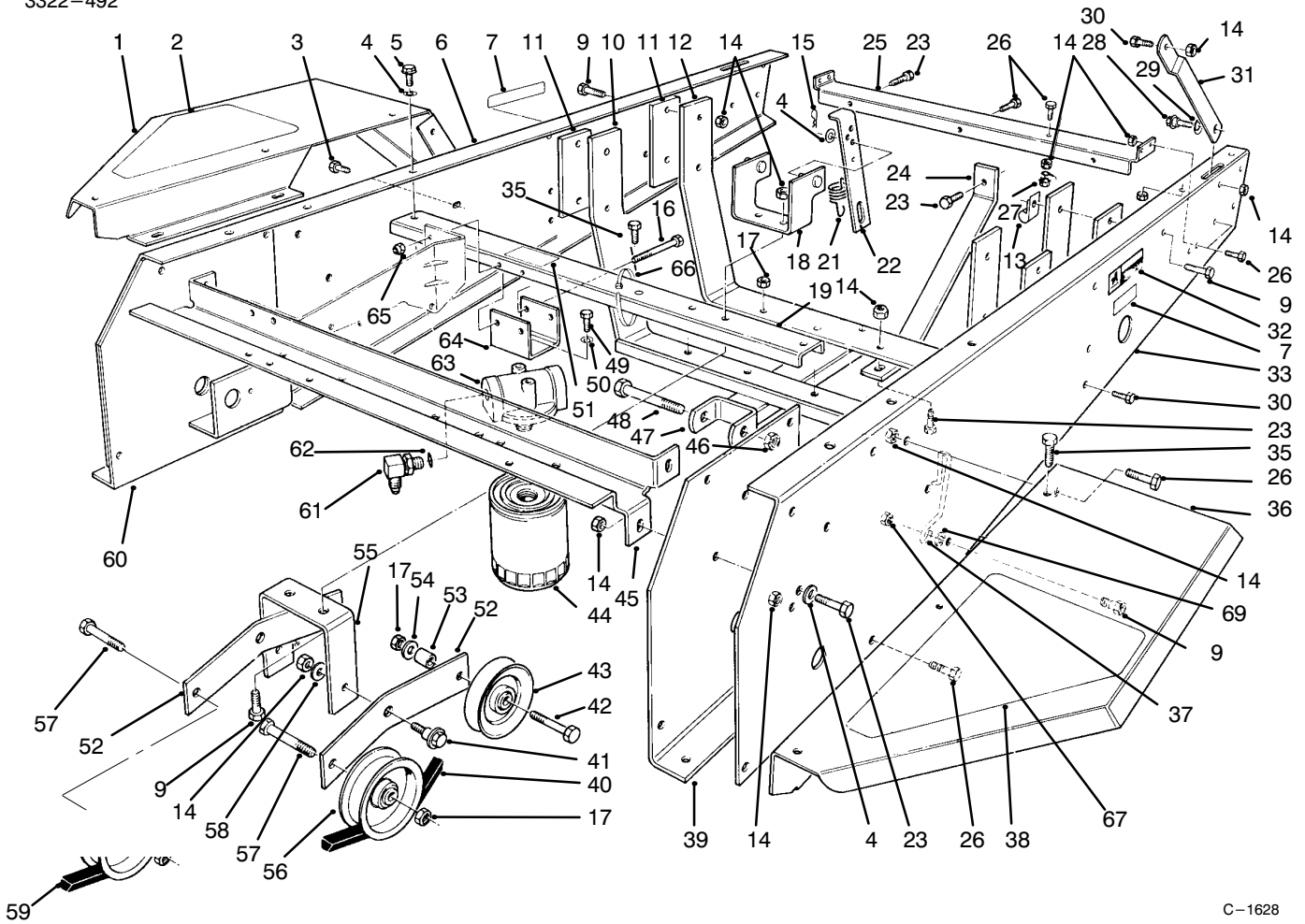


C-1628

## FRAME AND JACKSHAFT ASSEMBLY

Ref. No.	Part No.	Description	No. Used
1	54-1930	Fender R.H.	1
2	92-6292	Pad - Fender R.H.	1
3	3234-14	Screw	4
4	3256-23	Washer - Flat	8
5	32144-11	Screw - Thread Forming	2
6	54-1910	Channel - Side R.H.	1
7	93-7272	Decal - Caution	2
9	322-6	Screw	8
10	92-6250	Mount - Engine	1
11	54-1810	Plate - Engine	4
12	92-6251	Mount - Engine	1
13	2412-100	"J" Clamp	2
14	3296-29	Nut	33
15	3290-250	Pin - Cotter	2
16	321-14	Screw	2
17	3296-44	Nut	4
18	54-2070	Anchor - Spring	1
19	54-2500	Channel - Middle	1
20	323-7	Screw	3
21	54-1410	Spring - Idler	2
22	54-1130	Link - Idler Anchor	2
23	322-6	Screw	11

Ref. No.	Part No.	Description	No. Used
24	92-6254	Bar - Tension	1
25	54-1830	Support - Shield	1
26	322-4	Screw	13
27	32149-1	Nut - Lock	1
28	27-0410	Bolt - Shoulder	2
29	3290-211	Washer - Spring	2
30	322-2	Screw	2
31	54-1870	Stop - Hood, Lower	2
32	93-8071	Decal - Hot Surface	1
33	54-1920	Channel - Side L.H.	1
35	46-8560	Screw	7
36	54-1940	Fender L.H.	1
37	55-4860	Guide - Belt	1
38	92-6293	Pad - Fender L.H.	1
39	54-0460	Axle Stand - L.H.	1
40	54-1380	JackShaft - "V" Belt	1
41	19-1470	Bolt - Shoulder	2
42	323-11	Screw	2
43	62-4530	Idler - "V" Belt	2
44	54-0110	Filter - Transmission Oil	1
45	54-1010	Channel - Front	1

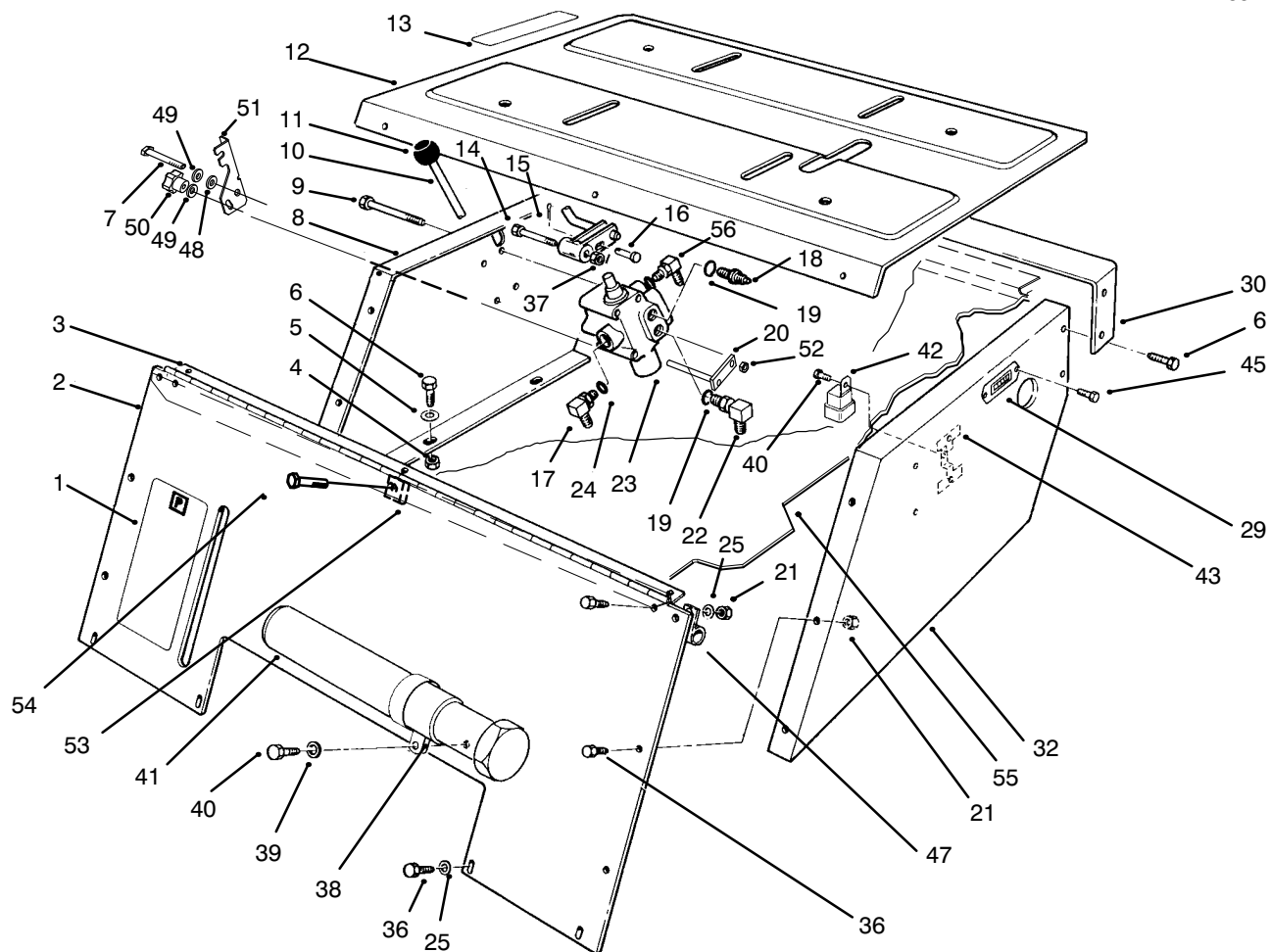


C-1628

## FRAME AND JACKSHAFT ASSEMBLY (Continued)

Ref. No.	Part No.	Description	No. Used
46	3296-61	Nut	1
47	92-6252	Mount - Cylinder	1
48	327-24	Screw	1
49	321-3	Screw	2
50	3253-3	Washer - Lock	2
51	93-7823	Decal - Oil	1
52	98-0795	Lever - Idler	2
53	37-7250	Spacer	2
54	3256-3	Washer - Flat	2
55	98-0792	Bracket - Idler Mount	1
56	62-4540	Idler - Flat	2
57	323-9	Screw	2

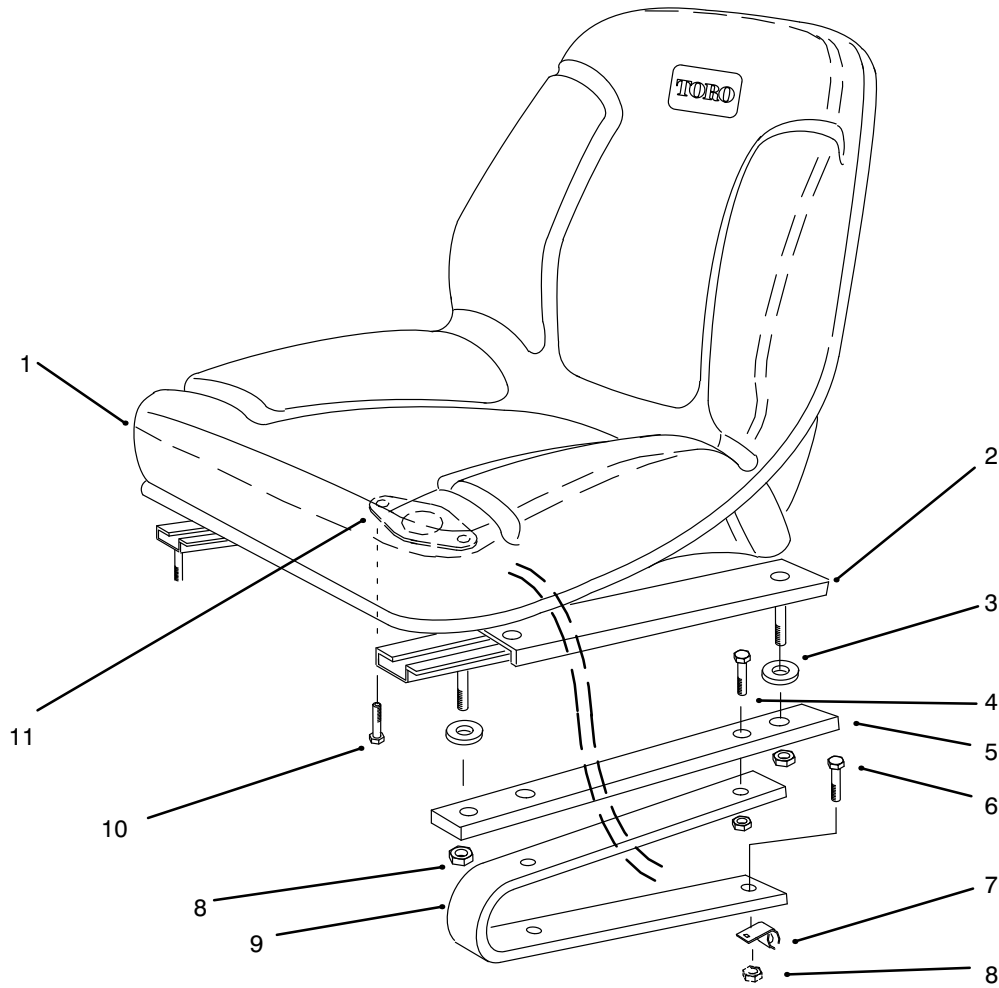
Ref. No.	Part No.	Description	No. Used
58	23-1120	Washer - Flat	2
59	54-1390	"V" Belt - Traction	1
60	54-0450	Axle Stand R.H.	1
61	340-3	Fitting - 90°	2
62	237-79	"O" Ring	1
63	86-9080	Filter Head Assembly	1
64	54-1120	Bracket - Filter Head	1
65	3296-42	Nut - Lock	2
66	3290-379	Cable Tie	7
67	32128-20	Nut - Flange Lock	1
69	3255-8	Washer - Lock, Ext. Tooth	1



C-2813

## SEAT SUPPORT ASSEMBLY

Ref. No.	Part No.	Description	No. Used	Ref. No.	Part No.	Description	No. Used
1	93-7296	Decal - Parking Brake	2	25	3256-1	Washer - Flat	10
2	80-3760	Support - Seat, Front	1	29	75-6820	Meter - Hour	1
3	54-1310	Hinge - Seat	1	30	54-1550	Support - Hood	1
4	3296-29	Nut	10	32	92-5435	Support - Seat L.H.	1
5	3256-23	Washer - Flat	6	36	321-4	Screw	5
6	322-4	Screw	10	37	3296-5	Nut	1
7	321-23	Screw - Hex. Hd.	1	38	2412-120	"R" Clamp	2
8	54-1220	Support - Seat R.H.	1	39	3256-51	Washer	2
9	321-23	Screw	2	40	32104-76	Screw	4
10	82-4680	Lever - Valve	1	41	74-0720	Tube - Manual	1
11	233-37	Knob	1	42	63-7590	Relay	1
12	92-6281	Plate - Seat	1	43	92-6259	Bracket	1
13	93-7300	Decal - Lift Control	1	45	32144-18	Screw	2
14	56-6590	Screw	1	47	2412-93	Clamp - Wire	1
15	3272-6	Pin - Cotter	1	48	93-9476	Spacer - Latch	1
16	283-17	Pin - Clevis	1	49	3256-22	Washer - Flat	2
17	353-511	Fitting	1	50	233-67	Knob	1
18	353-545	Fitting	1	51	93-9475	Bracket - Hydraulic Lock	1
19	237-78	"O" Ring	2	52	3296-56	Nut - Lock	1
20	94-1283	Control Block	1	53	3290-199	Nut - Speed	1
21	3296-42	Nut - Lock	18	54	321-5	Screw - Hex. Hd.	1
22	353-375	Fitting - 90°	1	55	93-9477	Cover - Belt	1
23	54-0090	Valve Assembly	1	56	340-98	Fitting	1
24	237-42	"O" Ring	2				



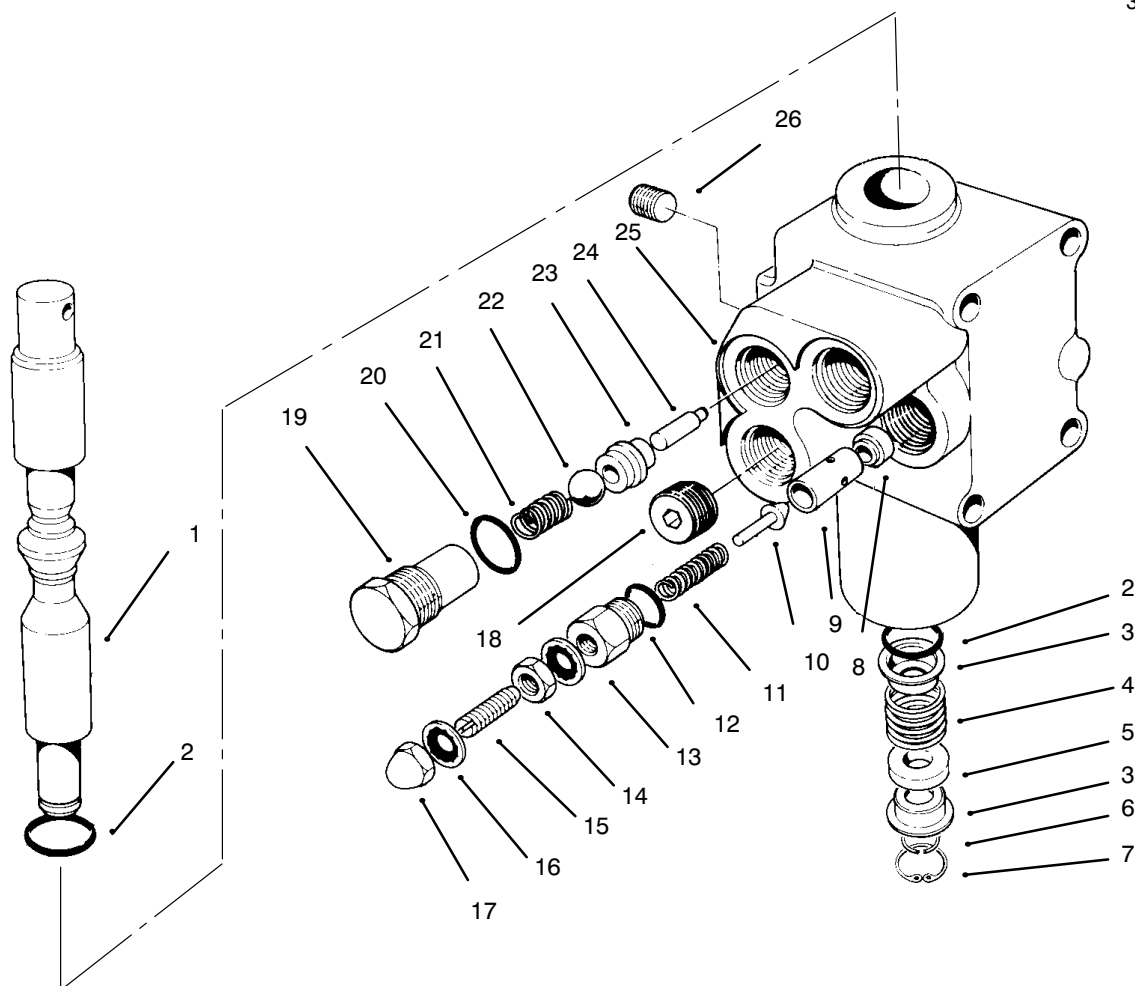
C-1603

## SEAT ASSEMBLY

Ref. No.	Part No.	Description	No. Used
1	92-6280	Seat	1
2	51-0790	Slide Seat Adjust Assembly	1
*	51-0780	Slide Seat Assembly R.H.	1
3	109989	Spacer	4
4	322-4	Screw	4
5	92-6284	Plate - Adapter, Seat	2
6	322-5	Screw	4

Ref. No.	Part No.	Description	No. Used
7	2412-93	Clamp - Hose	1
8	3296-29	Nut - Lock	8
9	114263	Spring - Seat	2
10	321-4	Screw	2
11	92-6282	Switch - Seat	1
*	92-6533	Cushion Replacement	1

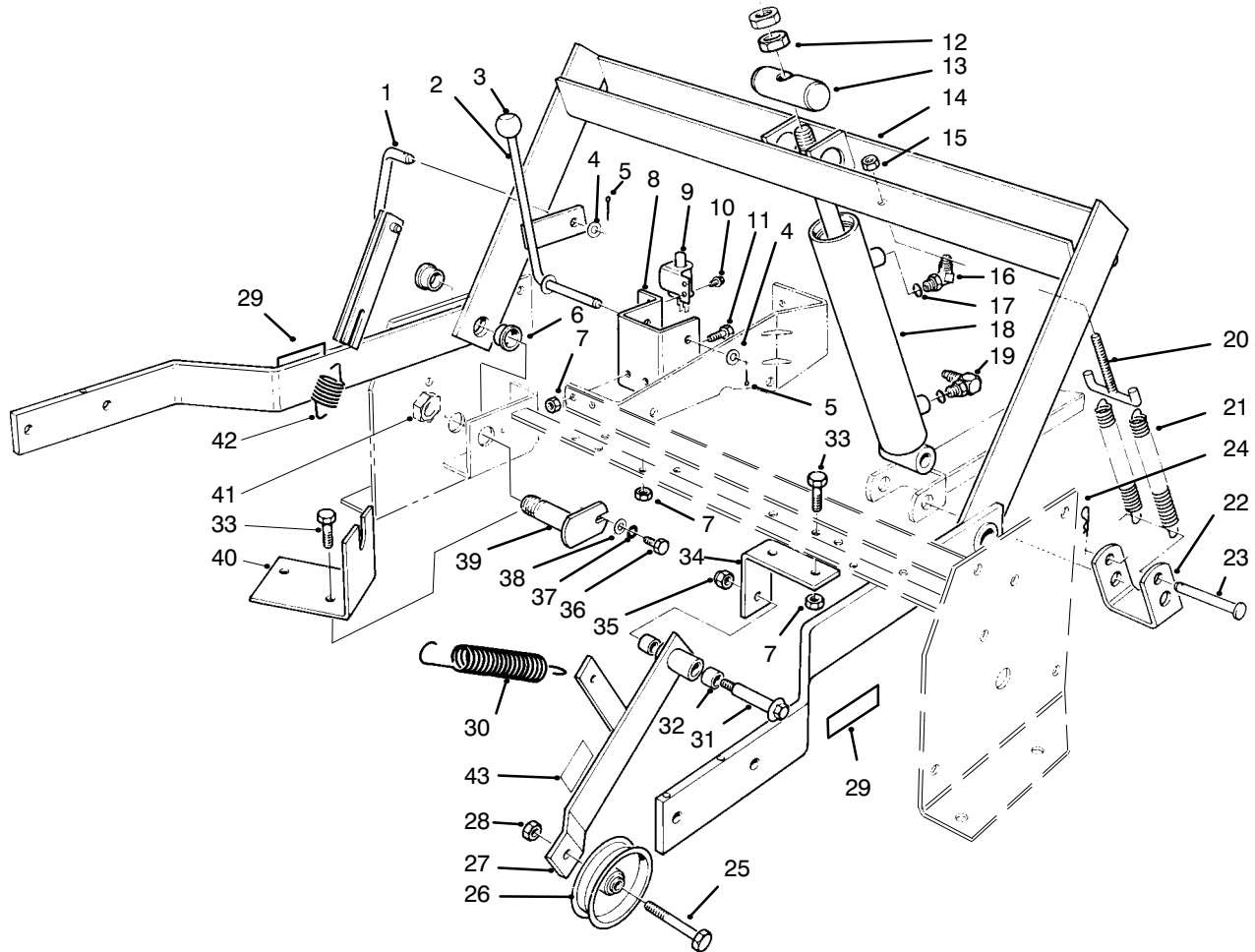
\*Not Illustrated



T-0075

## VALVE ASSEMBLY NO. 54-0090

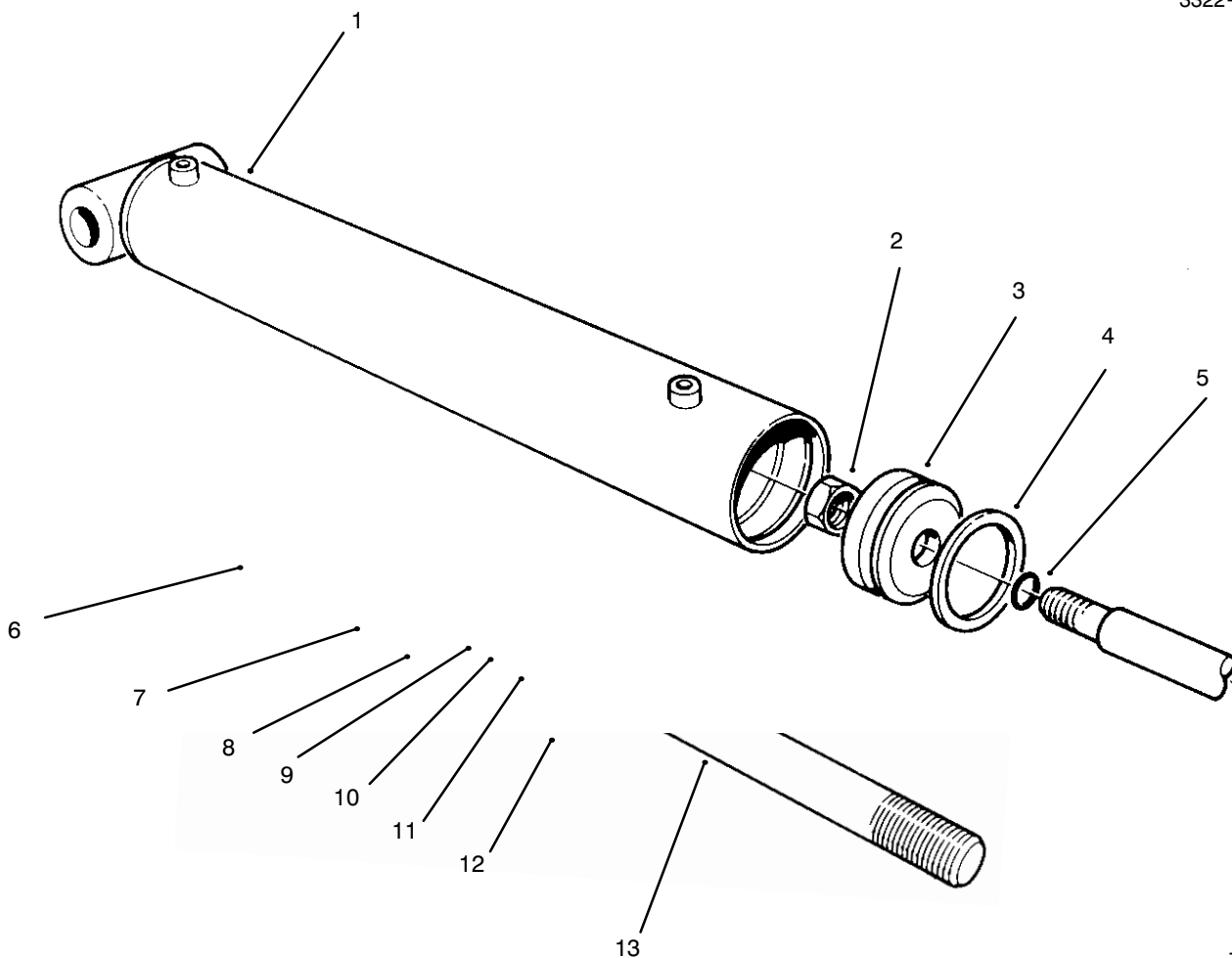
Ref. No.	Part No.	Description	No. Used	Ref. No.	Part No.	Description	No. Used
1	54-0260	Spool	1	15		Screw - Set	1
2	22-8500	"O"Ring	2	16		Stat O Seal	1
3	22-8380	Retainer - Spring	2	17		Nut - Acorn	1
4	22-8410	Spring	1	18	28-1120	Plug	1
5	27-5200	Spacer	1	19	22-8330	Plug	1
6	22-8480	Ring - Retaining	1	20	237-42	"O"Ring	2
7	22-8490	Ring - Retaining	1	21	22-8340	Spring	1
8	55-3640	Seat - Relief	1	22	22-8350	Ball	1
9		Guide	1	23	22-8370	Seat - Check Valve	1
10		Plunger	1	24	22-8360	Pin - Cam	1
11		Spring	1	25		Body	1
12		"O"Ring	1	26	55-3650	Plug	1
13		Cap - PV Adjustment	1	*	55-3630	Adjustable Relief Valve (Incl. Ref. #9-17)	1
14		Nut	1				



1076

## PARKING BRAKE AND LIFT FRAME ASSEMBLY

Ref. No.	Part No.	Description	No. Used	Ref. No.	Part No.	Description	No. Used
1	54-2120	Link - Parking Brake	1	23	283-55	Pin - Clevis	1
2	54-2110	Lever - Brake	1	24	3290-355	Pin - Cotter	1
3	233-37	Knob	1	25	323-10	Screw	1
4	3256-24	Washer - Flat	2	26	36-3220	Pulley - Idler	1
5	3272-10	Pin - Cotter	2	27	12-1109	Lever - Idler (Incl. Ref. #43)	1
6	27-9080	Bushing	4	28	3296-44	Nut	1
7	3296-29	Nut	6	29	93-7331	Decal - Warning	2
8	54-1270	Bracket - Parking Brake	1	30	54-1170	Spring - Extension	1
9	55-7120	Switch - Brake	1	31	27-6230	Bolt - Shoulder	1
10	32144-1	Screw - Thread Forming	2	32	256-154	Bushing	2
11	322-6	Screw	2	33	322-4	Screw	4
12	3220-6	Nut - Jam	2	34	55-7310	Bracket - Idler	1
13	54-2000	Pin - Pivot	1	35	3296-6	Nut	1
14	66-1570	Frame - Lift (Incl. Ref. #6)	1	36	321-2	Screw	2
15	32153-3	Nut	2	37	3253-3	Washer	2
16	353-431	Fitting - 45°	1	38	3256-1	Washer	2
17	237-78	"O" Ring	2	39	54-2100	Pin - Pivot	2
18	54-0150	Cylinder - Lift	1	40	56-6920	Bracket - Cable Extension	1
19	353-375	Fitting - 90°	1	41	3296-15	Nut	2
20	56-3320	"T" Hook	1	42	54-0960	Spring - Parking Brake	1
21	56-2760	Spring - Extension	2	43	93-6696	Decal - Spring Load	1
22	56-3370	Bracket - Spring	2				



T-0077

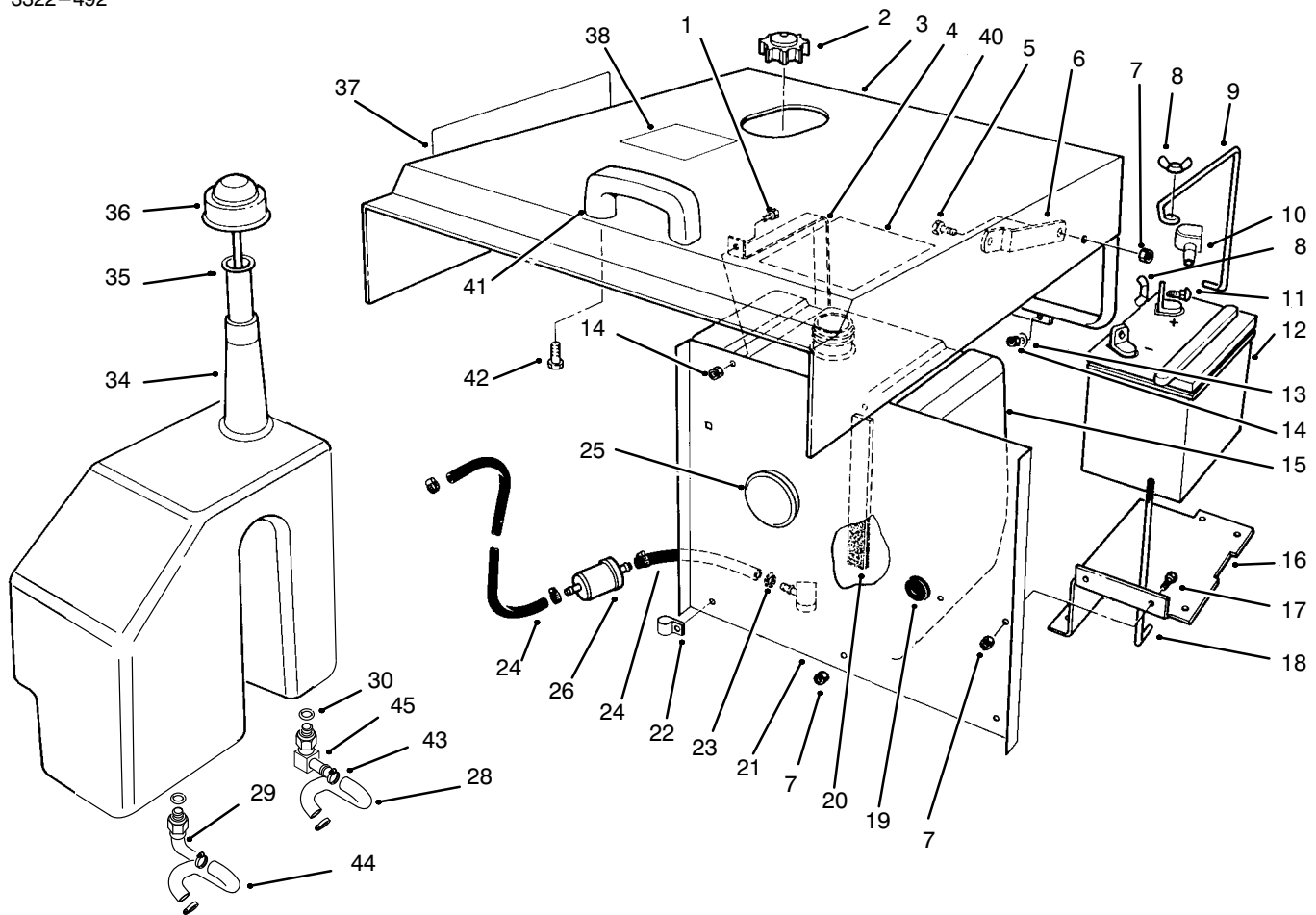
## HYDRAULIC LIFT CYLINDER NO. 54-0150

Ref. No.	Part No.	Description	No. Used
1†		Barrel	1
2	32152-10	Nut - Lock	1
3	54-0300	Piston	1
4†		Uniring	1
5†		"O"Ring	1
6	54-0310	Head	1
7†		"O"Ring	1
8†		Washer - Backup	1

Ref. No.	Part No.	Description	No. Used
9†		"O"Ring	1
10†		Washer - Backup	1
11†		Seal - Dust	1
12	43-5220	Ring - Retaining	1
13	54-0280	Shaft	1
*	54-0290	Seal Repair Kit (Incl. Ref. #4, 5 & 7-11)	1

\* Not illustrated.

† Not service separately.

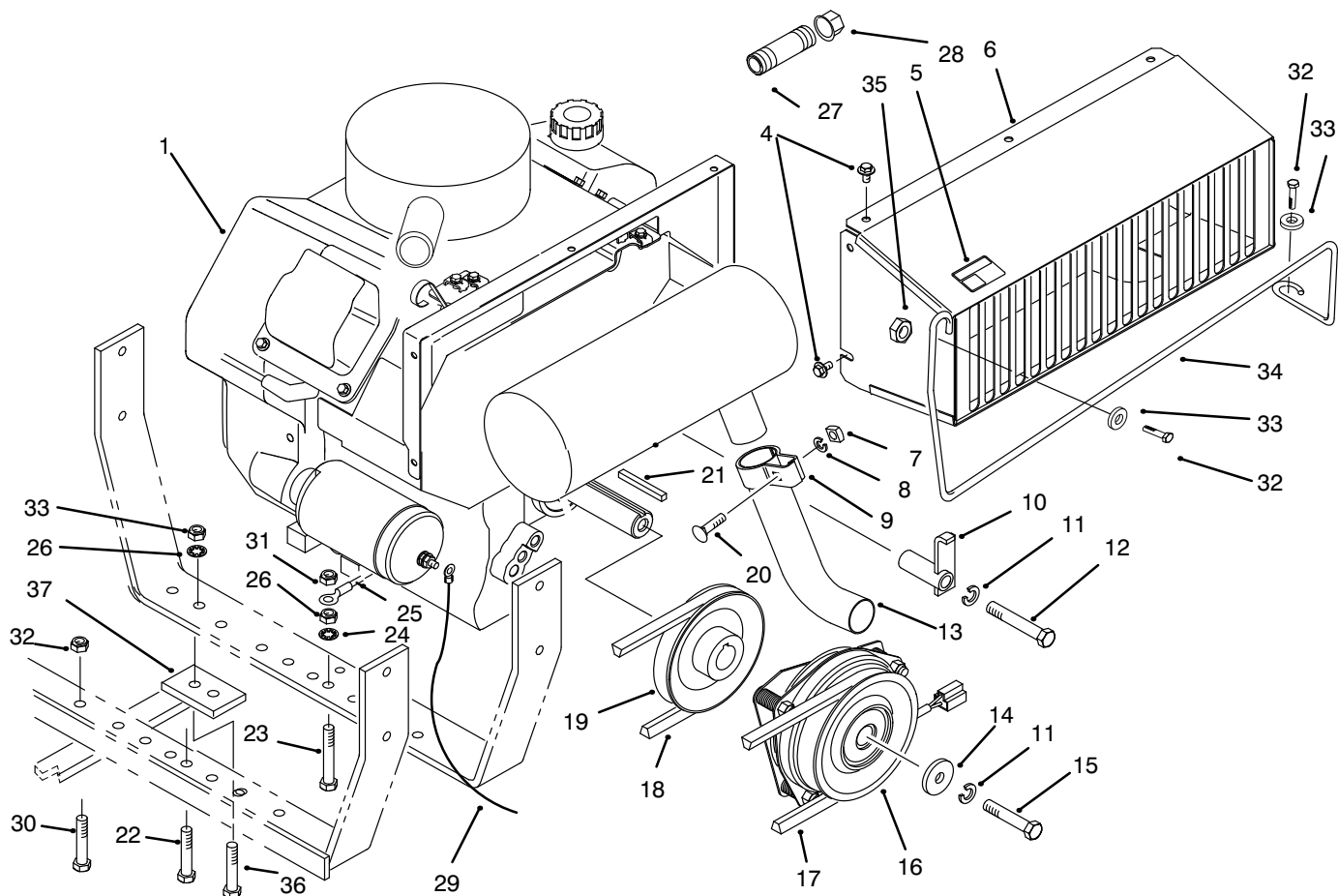


C-1630

## HOOD, FUEL TANK & HYDRAULIC RESERVOIR ASSEMBLY

Ref. No.	Part No.	Description	No. Used	Ref. No.	Part No.	Description	No. Used
1	321-3	Screw - Hex. Hd.	2	24	92-6283	Hose - Fuel	2
2	55-3570	Cap - Fuel	1	25	92-6274	Plug - Cap	1
3	14-4109	Hood	1	26	94-9695	Filter - Fuel	1
4	54-1880	Strap - Fuel Tank	2	28	98-2853	Hydraulic Hose Assembly 10' Transmission to Reservoir	1
5	322-3	Screw - Hex. Hd.	2	29	94-7691	Adapter - Hydraulic (Incl. Ref. #30)	1
6	54-1860	Stop - Hood Upper	2	30	237-80	"O" Ring	2
7	3296-29	Nut - Hex.	9	34	98-0781	Reservoir - Hydraulic	1
8	32103-22	Nut - Wing	3	35	29-0590	Screen	1
9	54-1260	Clamp - Battery	1	36	36-4950	Cap - Oil	1
10	77-0981	Boot - Terminal	1	37	94-5410	Decal - Groundsmaster 120	2
11	3229-1	Bolt - Carriage	2	38	92-6291	Decal - Refueling	1
12	82-4640	Battery	1	40	92-6288	Decal - Service	1
13	3256-1	Washer	4	41	65-5100	Handle	1
14	3296-42	Nut - Lock	8	42	46-8091	Screw	2
15	62-4040	Tank - Fuel	1	43	2412-129	Clamp - Hose	4
16	54-1850	Support - Battery	1	44	98-2852	Hydraulic Hose Assembly 20' Transmission to Reservoir	1
17	322-4	Screw - Hex. Hd.	2	45	98-2876	Adapter - Hydraulic (Incl. Ref. #30)	1
18	12-5950	Rod - Battery Support	1	*	68-7330	Decal - Danger	1
19	237-100	Grommet	1				
20	54-1890	Foam - Tank	2				
21	92-6267	Shield - Heat	1				
22	2412-100	"R" Clamp	1				
23	2412-108	Clamp - Hose	4				

\*Not Illustrated

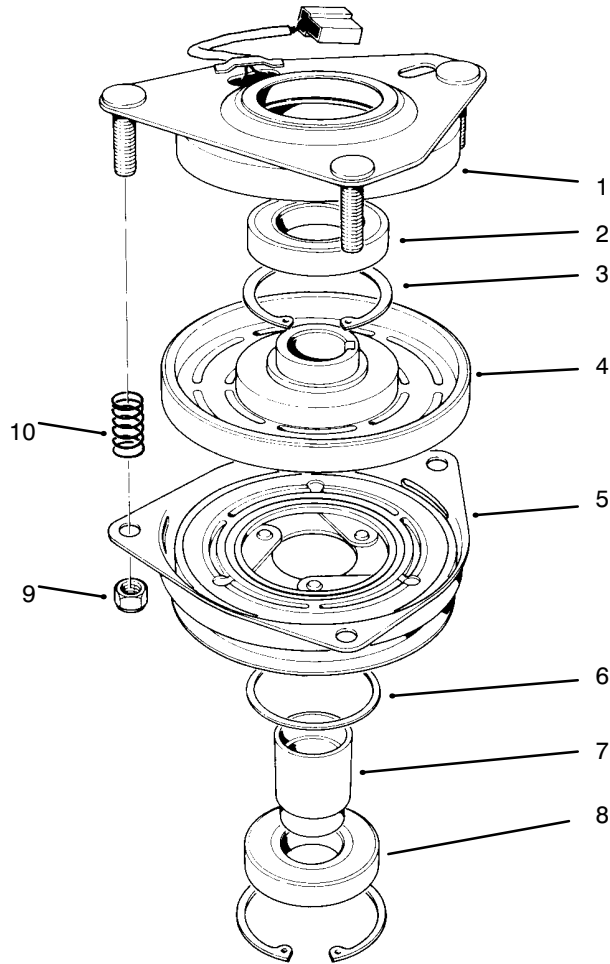


C-2814

## ENGINE ASSEMBLY

Ref. No.	Part No.	Description	No. Used
1		Engine – Kohler 20 HP Model CH20QS PS 64556	1
4	48-7610	Screw	5
5	93-8069	Decal – Hot Surface	1
6	92-6260	Duct – Engine	1
7	3217-6	Nut – Square	1
8	3253-4	Washer – Lock	1
9	55-8660	Assembly – Clamp (Incl. Ref. #7, 8 & 20)	1
10	54-2160	Bracket – Anchor	1
11	3253-6	Washer – Lock	2
12	324-11	Screw – Hex. Hd.	1
13	54-2290	Pipe – Exhaust	1
14	44-8160	Washer – Flat	1
15	3212-24	Screw – Hex. Hd.	1
16	54-0220	Assembly – Clutch	1
17	54-1380	V-Belt	1
18	54-1390	V-Belt	1
19	54-2330	Pulley – Engine	1

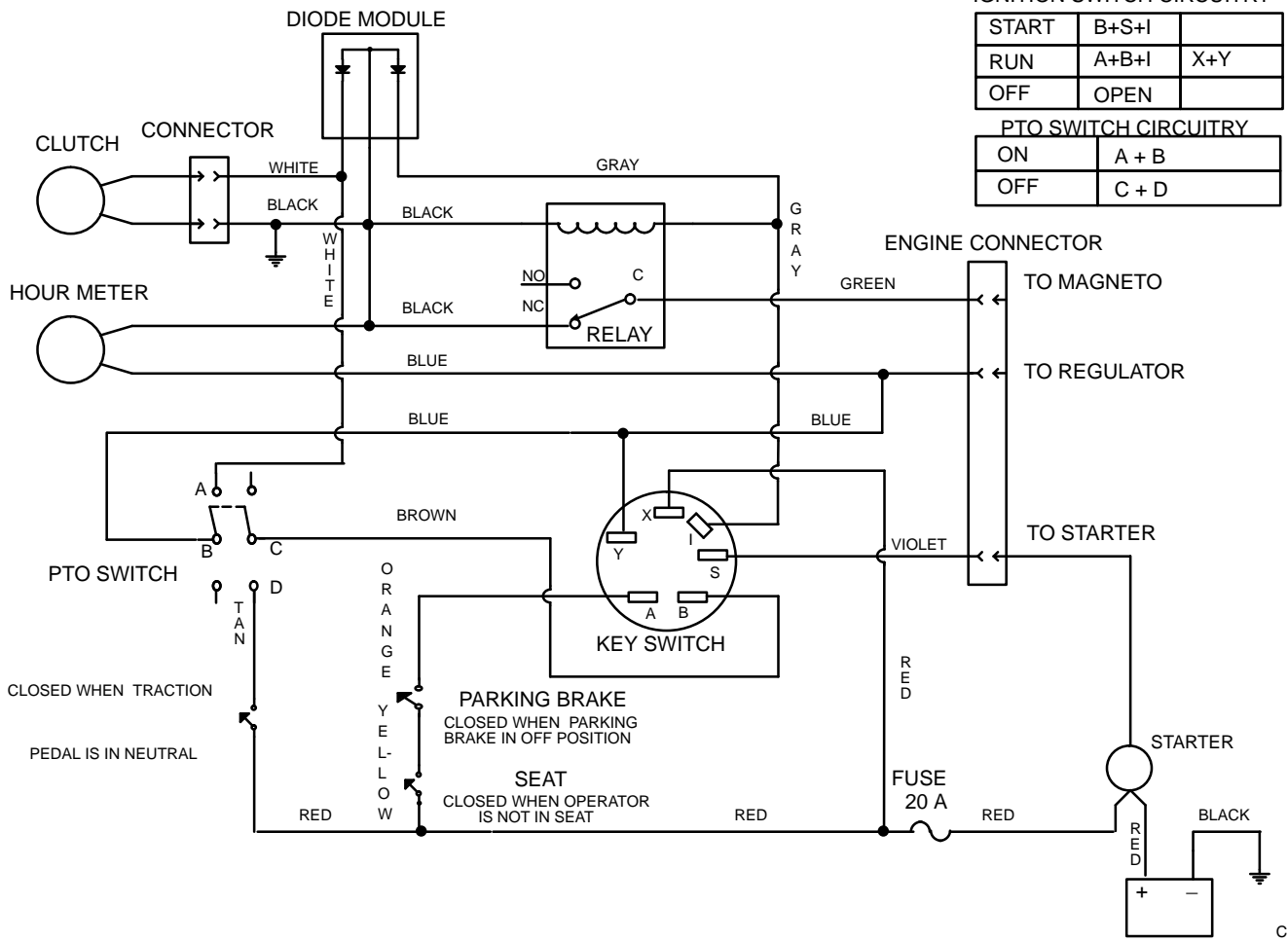
Ref. No.	Part No.	Description	No. Used
20	3230-3	Bolt – Carriage	1
21	5-0930	Key	1
22	323-10	Screw – Hex. Hd.	1
23	323-12	Screw – Hex. Hd.	1
24	3254-6	Washer – Lock, Int. Tooth	1
25	92-6287	Wire – Ground	1
26	3296-39	Nut – Lock	2
27	289-46	Nipple – Pipe	1
28	288-10	Cap – Pipe	1
29	28-3894	Wire – Positive	1
30	323-9	Screw	2
31	3290-357	Nut – Wizz	1
32	322-5	Screw	2
33	3256-23	Washer	2
34	93-9478	Guard – Muffler	1
35	3296-29	Nut	2
36	323-7	Screw – Hex. Hd.	1
37	98-8000	Guard – Tank	1



T-0080

## CLUTCH ASSEMBLY NO. 54-0220

Ref. No.	Part No.	Description	No. Used	Ref. No.	Part No.	Description	No. Used
1	54-0230	Field Assembly (Incl. Ref. #2 & 3)	1	6	44-8330	Spacer - Bearing	1
2	251-292	Bearing - Field	1	7	44-8340	Collar - Bearing	1
3	44-8310	Ring - Retaining	2	8	251-291	Bearing - Pulley	1
4	44-8360	Field Coil, Rotor & Bearing (Incl. Ref. #1)	1	9	3296-6	Nut - Lock	3
5	44-8370	Armature & Pulley Assembly (Incl. Ref. #3, 6, 7 & 8)	1	10	44-8320	Spring	3



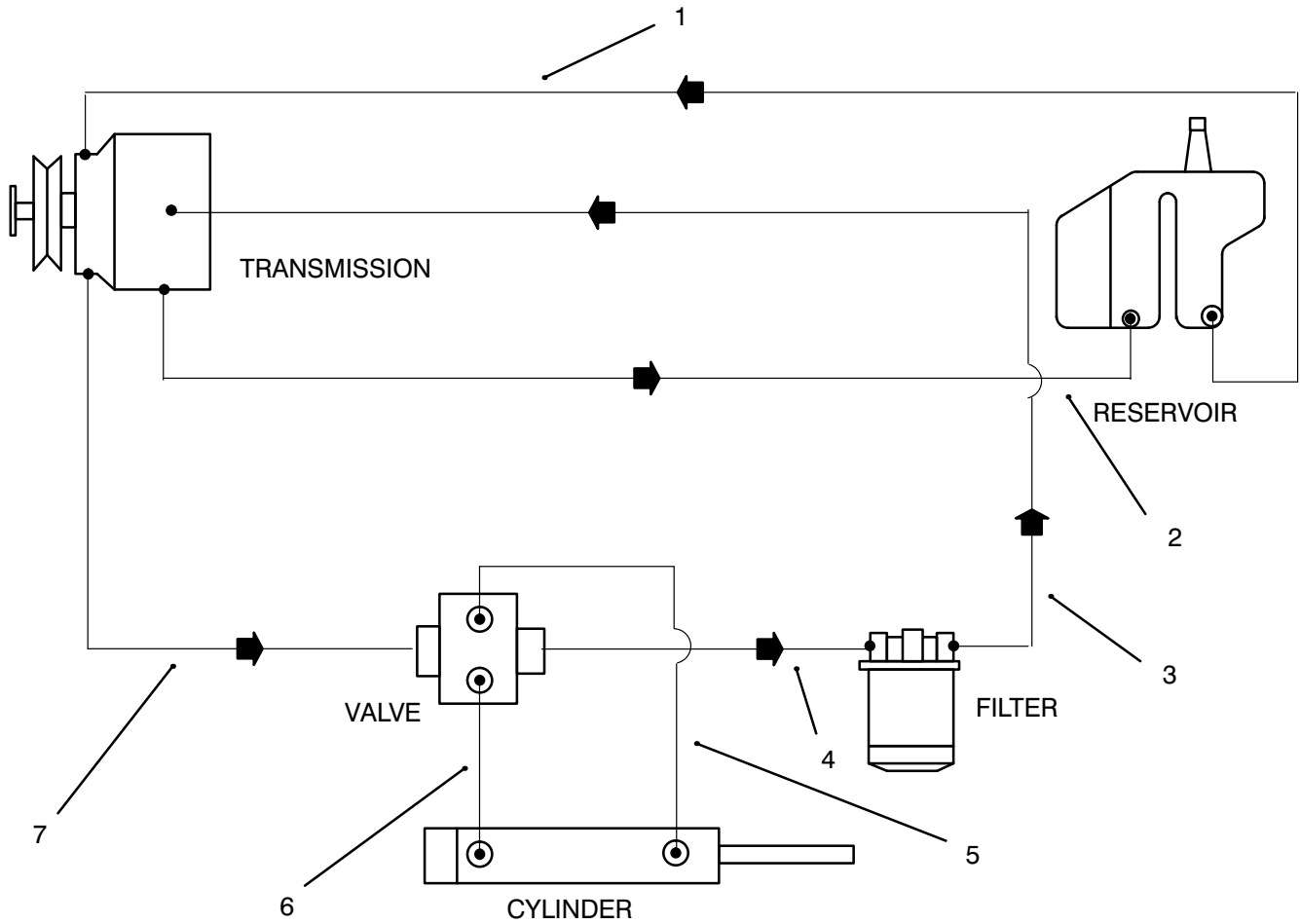
C-1777

# ELECTRIC SCHEMATIC

Ref. No.	Part No.	Description	No. Used
*	94-5848	Harness - Wire	1
*	94-5849	Diode	1

Ref. No.	Part No.	Description	No. Used

\*Not Illustrated

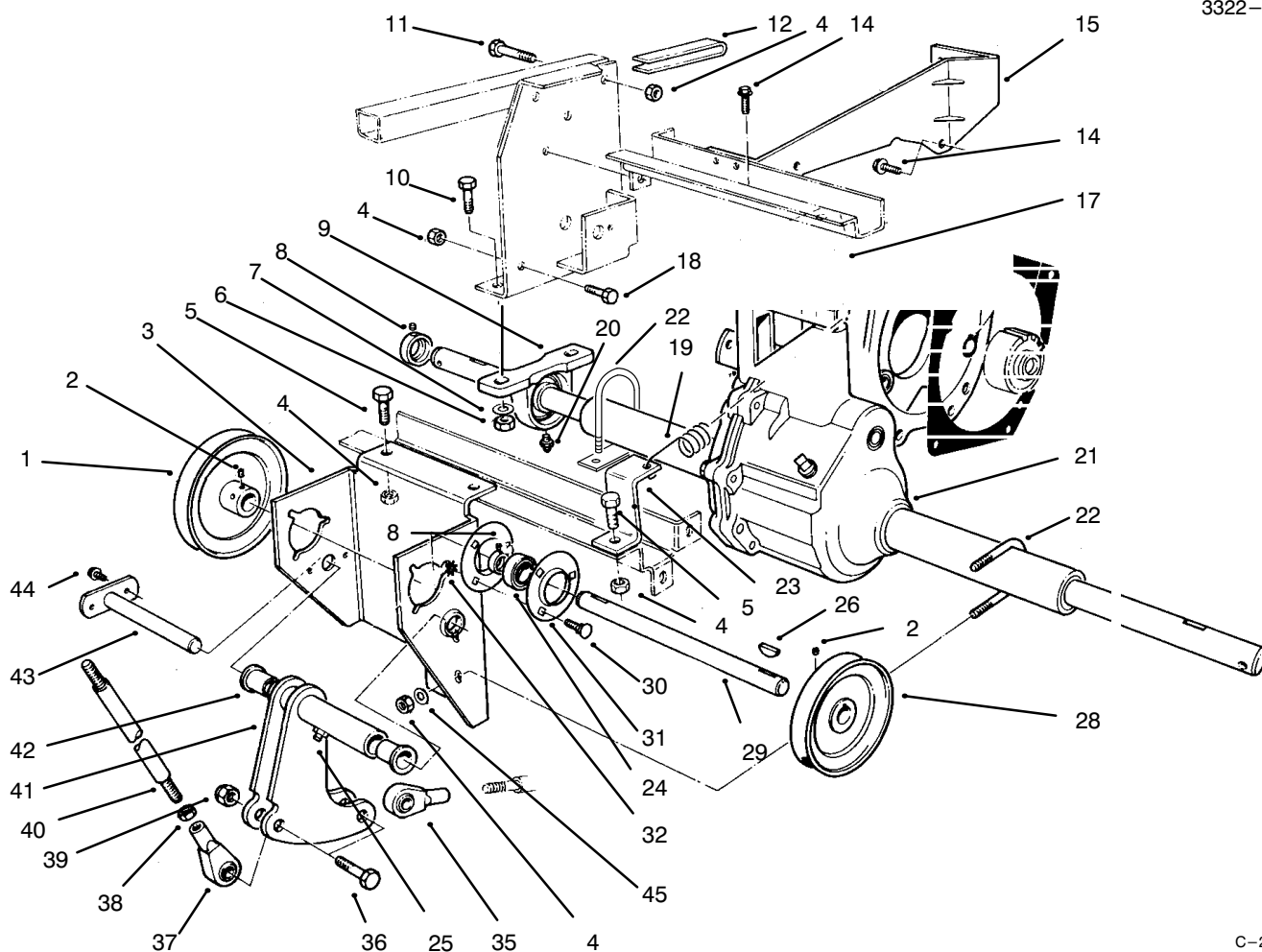


T-0084

## HYDRAULIC SCHEMATIC

Ref. No.	Part No.	Description	No. Used
1	98-2852	Hydraulic Hose Assembly Reservoir to Transmission	1
2	98-2853	Hydraulic Hose Assembly Reservoir to Transmission	1
3	98-2851	Hydraulic Hose Assembly Filter to Transmission	2
5	54-2610	Hydraulic Hose Assembly Cylinder to Valve	

Ref. No.	Part No.	Description	No. Used
6	54-2620	Cylinder to Valve Hydraulic Hose Assembly	1
7	54-2590	Hydraulic Hose Assembly Transmission to Valve	1

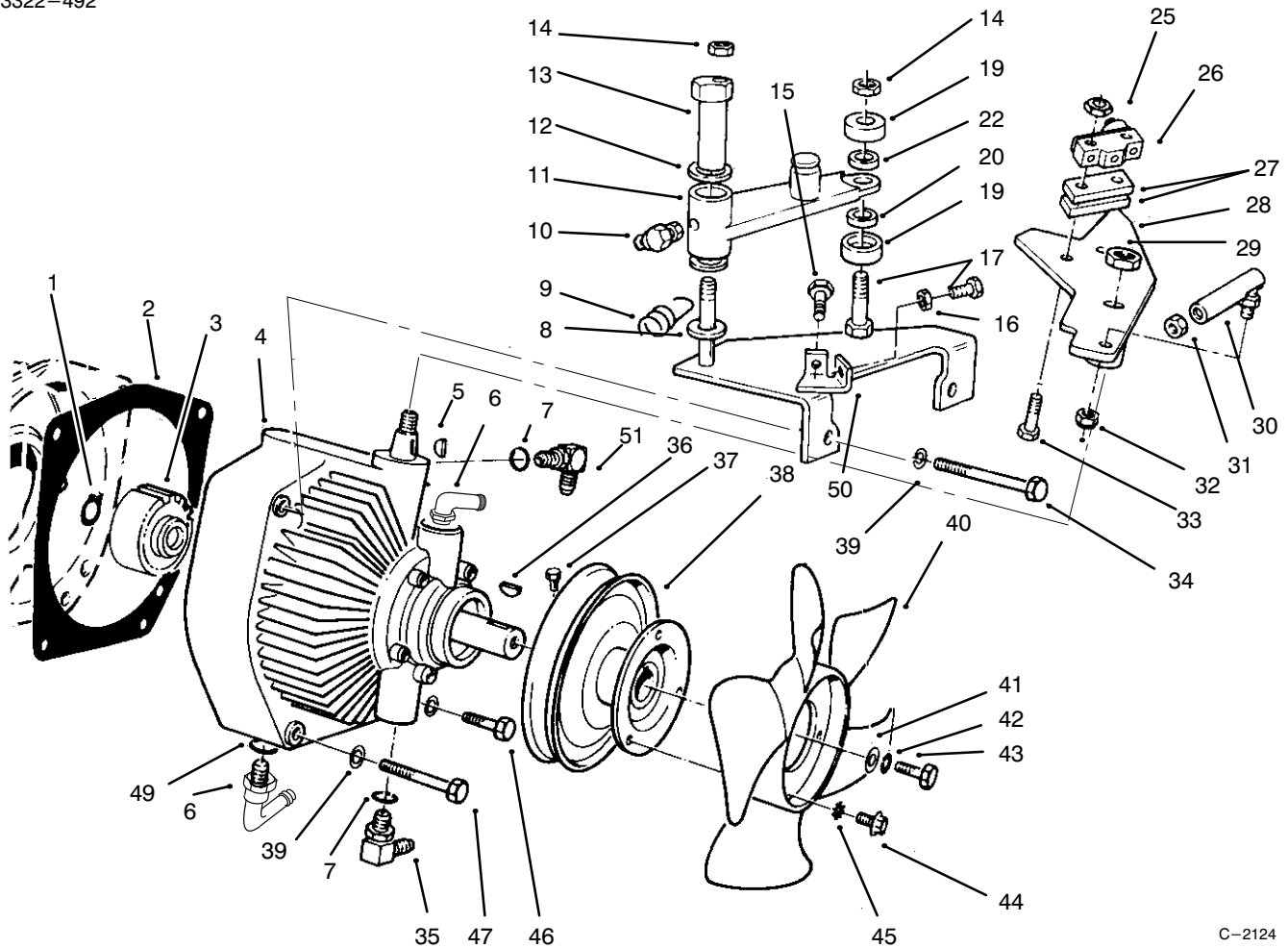


C-2123

## DIFFERENTIAL ASSEMBLY

Ref. No.	Part No.	Description	No. Used	Ref. No.	Part No.	Description	No. Used
1	54-2390	Pulley - Output	1	24	251-288	Bearing w/Collar	2
2	3241-1	Screw - Set	4	25	302-49	Fitting - Grease	1
3	60-9130	Bracket - Jackshaft	1	26	3257-5	Key - Woodruff	3
4	3296-29	Nut - Lock	A/R	28	54-2380	Pulley - Input	1
5	322-4	Screw - Hex. Hd.	6	29	54-1600	Jackshaft	1
6	3296-44	Nut - Lock	4	30	3230-1	Bolt - Carriage	6
7	3256-3	Washer - Flat	6	31	251-341	Flange - Bearing	4
8	3245-35	Screw - Set	4	32	32149-1	Nut - Lock	6
9	72-4060	Bearing Assembly	2	35	251-304	Rod End	1
10	323-8	Screw - Hex. Hd.	4	36	324-7	Screw - Hex. Hd.	2
11	322-10	Screw - Hex. Hd.	4	37	251-305	Rod End	1
12	80-3750	Spacer	2	38	3220-4	Nut - Hex. Jam	2
14	3234-1	Screw - Hex. Flange Hd.	5	39	3296-48	Nut - Lock	2
15	59-1620	Bracket - Transaxle	1	40	54-1490	Rod - Steering	1
17	60-8990	Plate - Transaxle	1	41	54-2060	Bellcrank Assembly (Incl. Ref. #25 & 42)	1
18	322-4	Screw - Hex. Hd.	6	42	46-6680	Bushing - Flanged	2
19	76-9430	Spring - Extension	1	43	59-1470	Shaft - Bellcrank	1
20	302-2	Fitting - Grease	2	44	46-8560	Screw - Thread Forming	2
21	98-2850	Differential Assembly	1	45	3256-23	Washer - Flat	2
22	54-8970	"U" Bolt	1				
23	92-6273	Bracket - Spring	1				

\*Not Illustrated



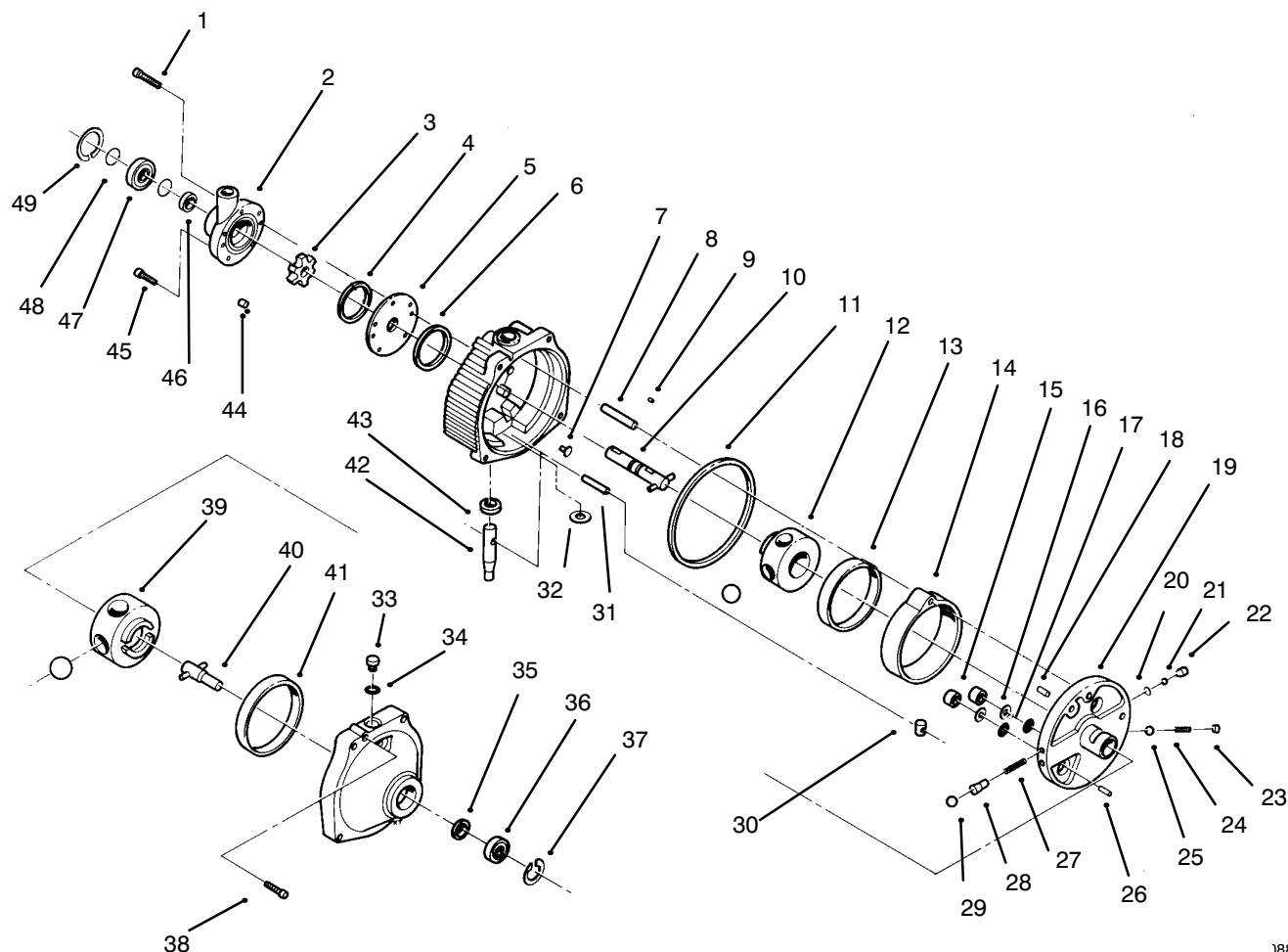
C-2124

## TRANSMISSION ASSEMBLY

Ref. No.	Part No.	Description	No. Used
1	32120-64	Ring - Snap	1
2	55-4320	Gasket	
3	54-0320	Gear	1
4	98-0777	Transmission - Hydrostatic	1
5	3257-24	Key - Woodruff	1
6	94-7691	Adapter	2
7	237-79	"O"Ring	2
8	3256-68	Washer	1
9	76-9430	Spring - Extension (Ref.)	
10	302-60	Fitting - Grease 90°	
11	92-6289	Swing Arm Assembly	
	*	(Incl. 256-113 Bushings (2))	1
12	3-6498	Washer	1
13	76-8640	Stud - Traction	1
14	3296-29	Nut - Lock	A/R
15	322-6	Screw - Hex. Hd.	2
16	3217-6	Nut	4
17	322-7	Screw - Hex. Hd.	1
19	251-307	Bearing	2
20	92-6290	Spacer	1
22	75-5470	Spacer Bearing	1
25	3296-9	Nut	2
26	29-6163	Switch	1
27	75-4130	Spacer	2

Ref. No.	Part No.	Description	No. Used
28	92-6269	Lever - Traction	2
29	3296-25	Nut	1
30	2411-34	Joint - Ball	1
31	3220-1	Nut - Hex. Jam	1
32	3296-3	Nut - Lock	1
33	3250-46	Screw	2
34	323-14	Screw - Hex. Hd.	2
35	353-511	Fitting - Hydraulic 90° (Incl. Ref. #7)	1
36	3257-5	Key - Woodruff	3
37	3241-2	Screw - Set	2
38	54-0930	Pulley - Transmission	1
39	3253-5	Washer - Lock	4
40	54-0240	Fan	1
41	3256-55	Washer	1
42	3253-3	Washer - Lock	1
43	321-2	Screw - Hex. Hd.	1
44	32144-19	Screw - Round Hd.	3
45	3255-5	Washer - Lock	3
46	323-13	Screw - Hex. Hd.	1
47	323-16	Screw - Hex. Hd.	1
49	237-80	"O"Ring	2
50	92-6270	Plate - Traction	1
51	340-98	Fitting Hydro	2

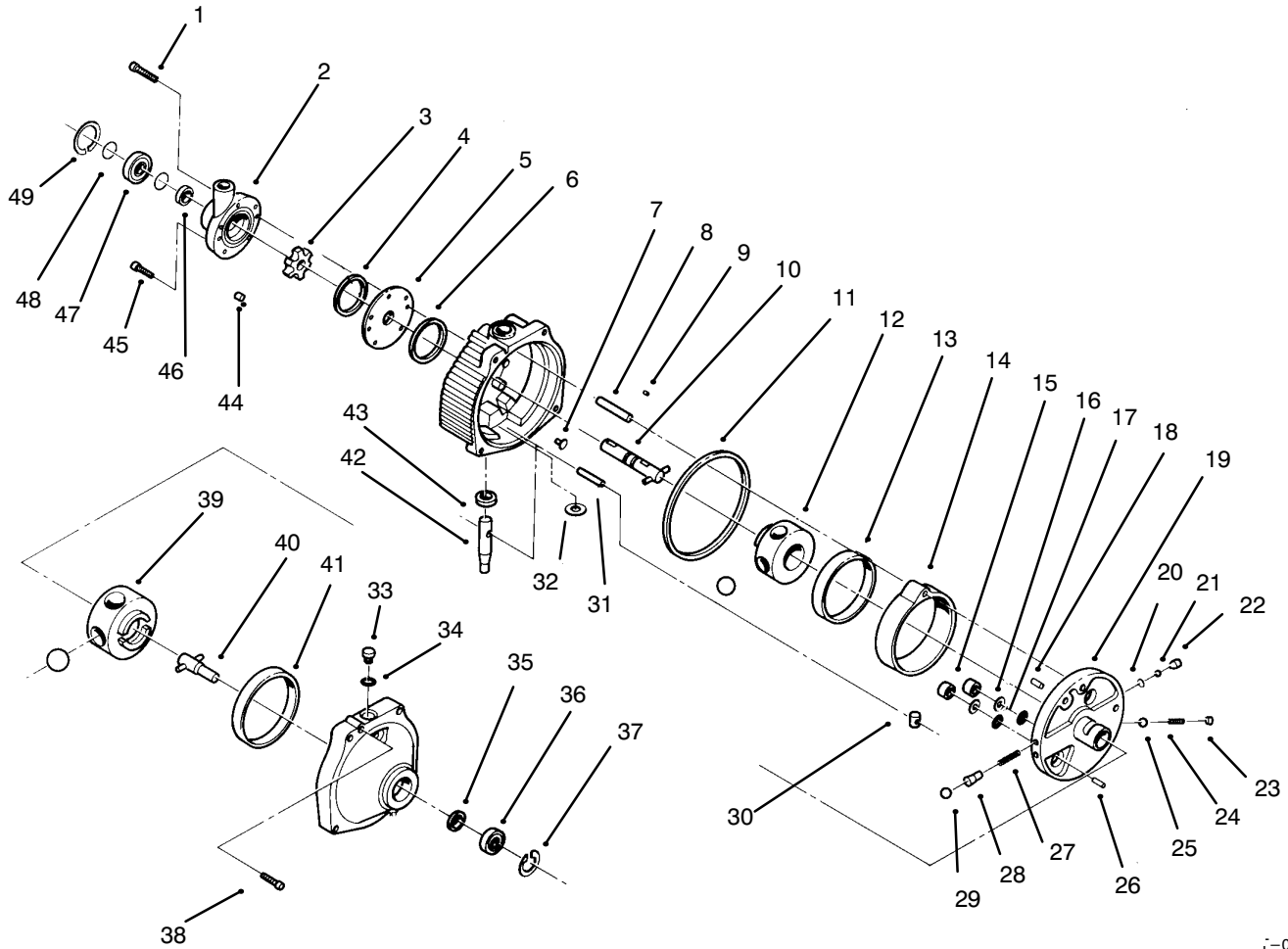
\*Not Illustrated



J883

## HYDROSTATIC TRANSMISSION ASSEMBLY

Ref. No.	Part No.	Description	No. Used	Ref. No.	Part No.	Description	No. Used
1	56-2800	Screw - Hex. Socket Hd.	1	17	56-2970	"O" Ring	2
2	56-2830	Charge Pump Assembly (Incl. Ref. #1)	1	18	56-2980	Pin - Coil	1
3	56-3120	Carrier	1	19	56-2990	Pintle Assembly (Incl. Ref. #15-18, 20, 22-26 & 27-29)	1
4	56-2850	Ring - Seal	1	20	56-3000	Ring - Retaining	2
5	56-2860	Plate - Pump	1	21	56-3010	Ball	2
6	56-2870	Ring - Seal	1	22	56-3020	Body - Check Valve	2
7	56-2880	Button	2	23	56-3050	Plug - Relief Valve	1
8	56-2890	Pin - Dowel	1	24	56-3040	Spring - Relief Valve	1
9	56-2900	Pin - Drive	1	25	56-3030	Ball	1
10	56-2910	Input Shaft Assembly	1	26	56-3060	Pin - Dowel	1
11	56-2920	Ring - Seal	1	27	56-3180	Spring - Valve	2
12	56-2930	Pump Rotor & Ball Assembly	1	28	56-3200	Body - Valve	2
13		Race - Pump	1	29	56-3210	Ball	2
14	56-2940	Cam Ring Assembly (Incl. Ref. #13)	1	30	56-3170	Insert - Cam Ring	1
15	56-2950	Piston	2	31		Dowel	1
16	56-2960	Ring - Backup	2	32		Washer - Control Shaft	1

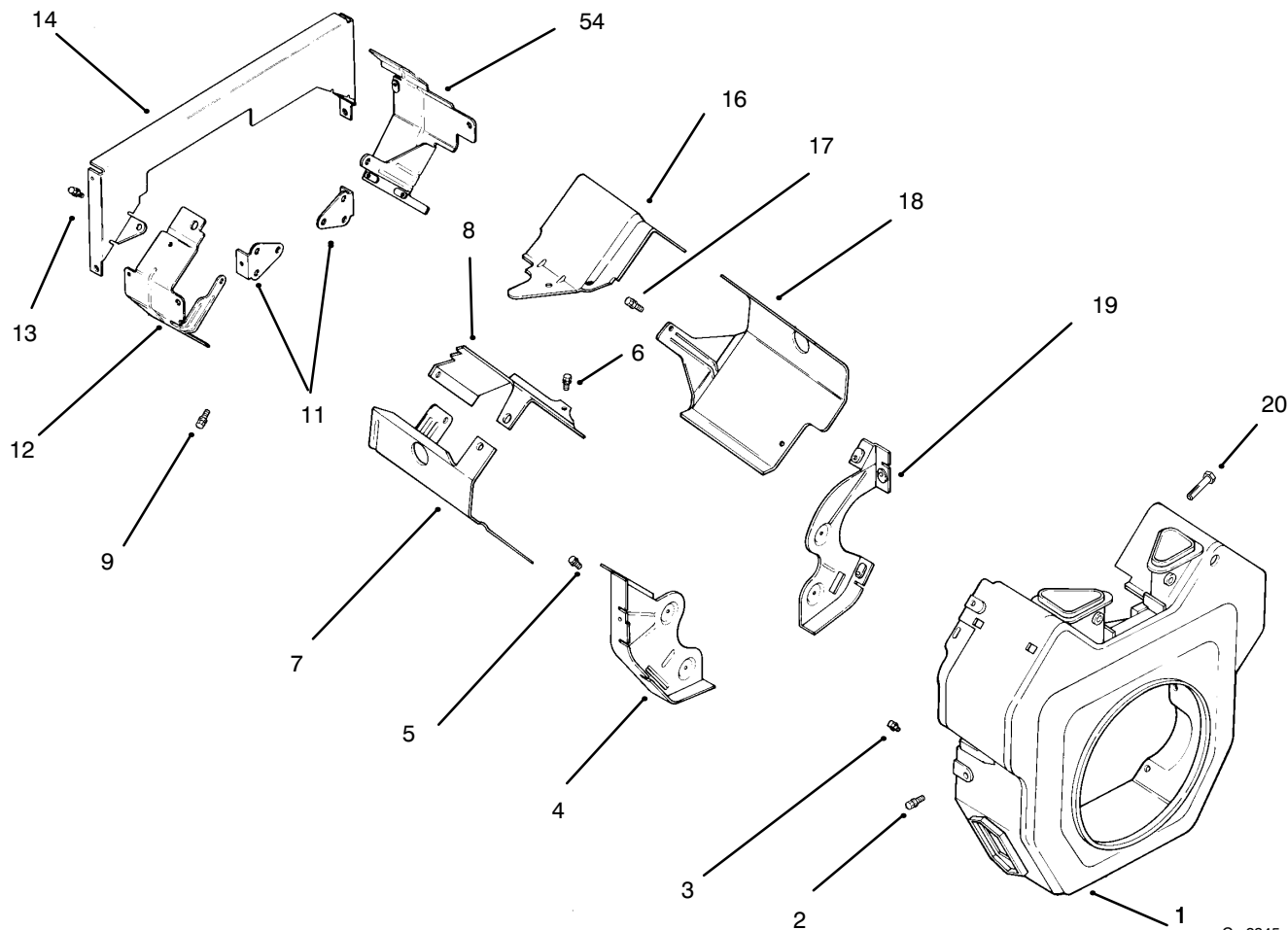


7-0083

## HYDROSTATIC TRANSMISSION ASSEMBLY (Continued)

Ref. No.	Part No.	Description	No. Used
33	56-3250	Plug Assembly (Incl. Ref. #34)	1
34	56-3260	"O"Ring	1
35	56-3270	Seal - Oil	1
36	56-3280	Bearing - Output	1
37	56-3290	Ring - Retaining	1
38	56-3300	Screw - Hex. Socket Hd.	2
39	56-3220	Motor Rotor & Ball Assembly	1
40	56-3230	Output Shaft Assembly	1
41	56-3240	Race - Motor	1
42	56-3140	Control Shaft Kit	

Ref. No.	Part No.	Description	No. Used
		(Incl. Ref. #31 & 32)	1
43	56-3130	Seal - Oil	1
44	56-3110	Pin - Roll	6
45	56-3100	Screw - Hex. Socket Hd.	4
46	56-2820	Seal - Oil	1
47	56-2810	Bearing - Input	1
48	56-3090	Ring - Retaining	2
49	56-3080	Ring - Retaining	1
*	56-3310	Kit - Overhaul Seal (Incl. Ref. #4, 6, 11, 16, 17, 34, 35, 43 & 46)	1

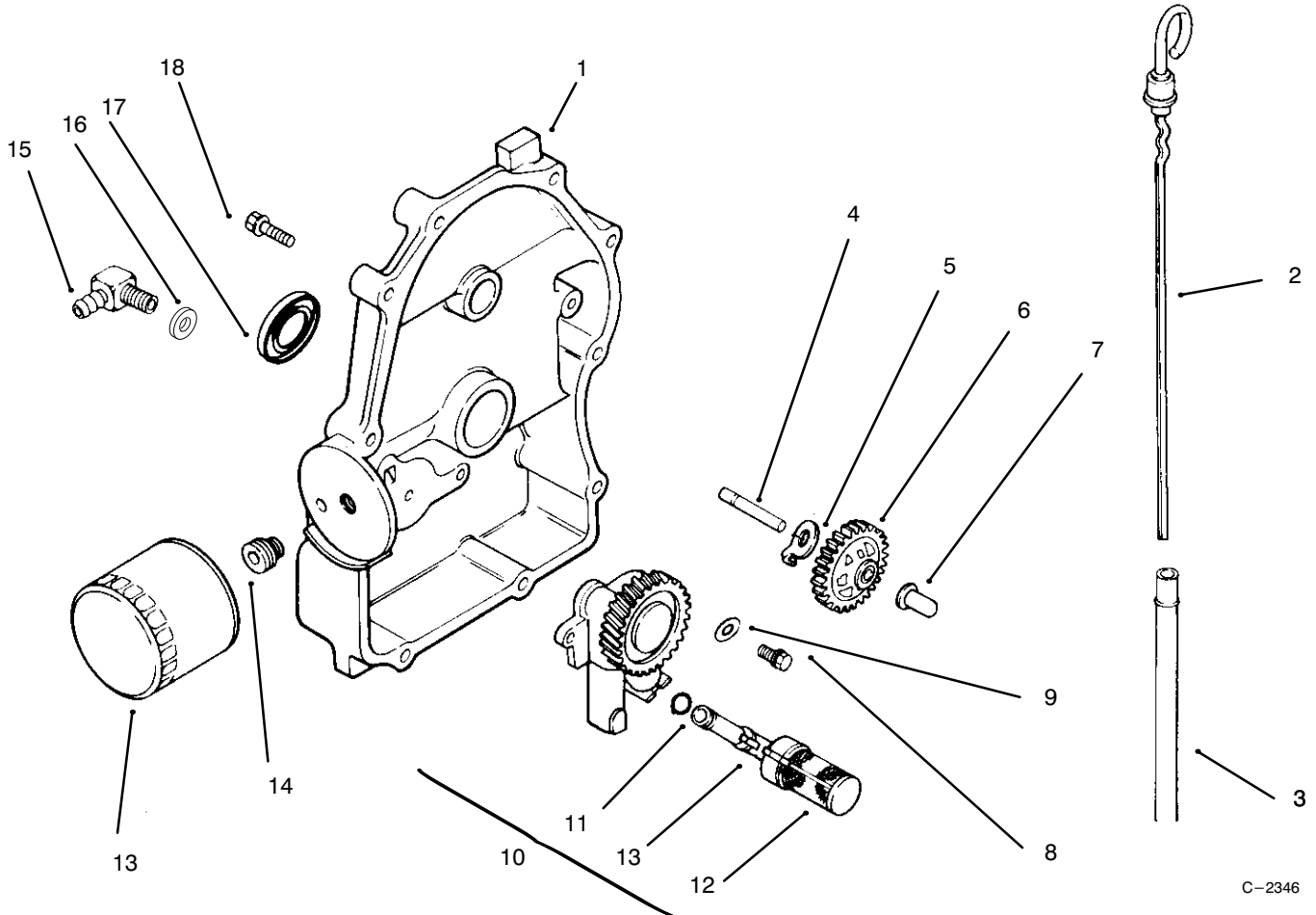


C-2345

## BAFFLES AND SHROUD ASSEMBLY

Ref. No.	Part No.	Description	No. Used
1	24 027 21	Housing – Blower	1
2	SM-0545016	Screw	5
3	M-0551016	Screw	1
4	24 146 02	Plate – Backing #2 side	1
5	M-0645016	Screw	4
6	M-0645016	Screw	2
7	24 063 20	Baffle – Cylinder Barrel # 2 side	1
8	24 063 17	Baffle – Valley #2 side	1
9	M-0545010	Screw	2
*10	24 755 14	Kit – "Q" Duct (Incl. Ref. # 11-15)	1
11	24 126 04	Bracket – Support	2

Ref. No.	Part No.	Description	No. Used
12	24 063 12	Baffle, – Ducted Air # 1 side	1
13	M-0639010	Screw	8
14	24 146 04	Plat – Ducted Air Backing	1
15	24 063 13	Baffle – Ducted air # 1 side	1
16	24 063 24	Baffle, Valley 1 side	1
17	SM-0545016	Screw	2
18	24 063 08	Baffle – Cylinder Barrel # 1 side	1
19	24 146 08	Plate – Backing #1 side	1
20	M-0545020	Screw	2



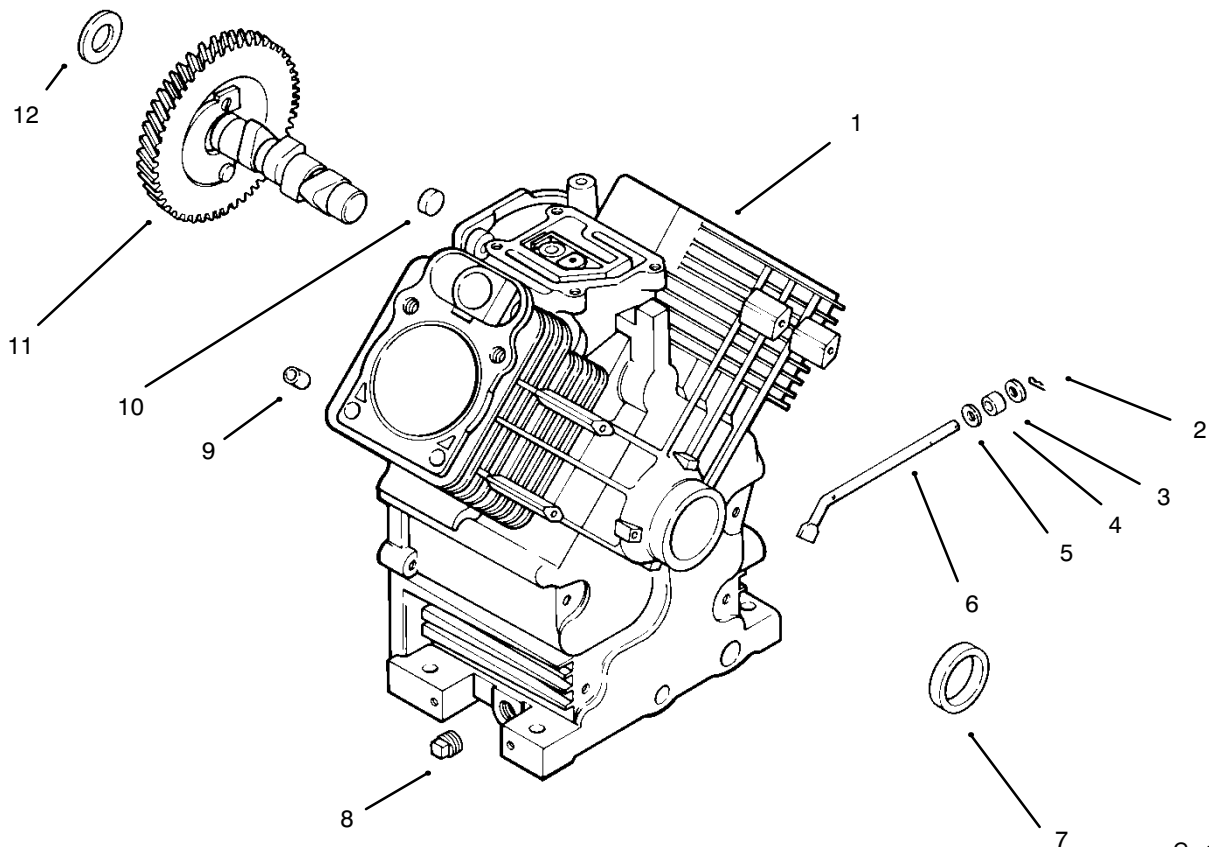
C-2346

## OIL PAN/LUBRICATION

Ref. No.	Part No.	Description	No. Used
1	24 009 83	Plate – Closure (Incl. Ref. # 2-7, 10-12, 16 & !7)	1
2	24 038 01	Dipstick	1
3	24 123 04	Tube – Dipstick	1
4	12 144 02	Shaft – Governor Gear	1
5	52 448 02	Tab – Locking	1
6	24 043 12	Kit – Governor Gear Asm (Incl. Ref. # 7)	1
7	12 380 01	Pin – Governor Regulating	1
8	M-0645025	Screw	2
9	M-0631005	Washer – Flat	2

Ref. No.	Part No.	Description	No. Used
10	24 393 03	Oil Pump Assembly (Incl. Ref. # 11-12)	1
11	24 153 01	"O"Ring	1
12	24 381 01	Pick-up, – Oil	1
13	12 050 01	Filter – Oil	1
14	24 136 01	Adapter – Oil Filter	1
15	25 155 02	Connector, – 90° Hose	1
16	24 153 08	"O"Ring	1
17	52 032 08	Seal – Oil (PTO End)	1
18	24 086 16	Screw	10

\*Not Illustrated

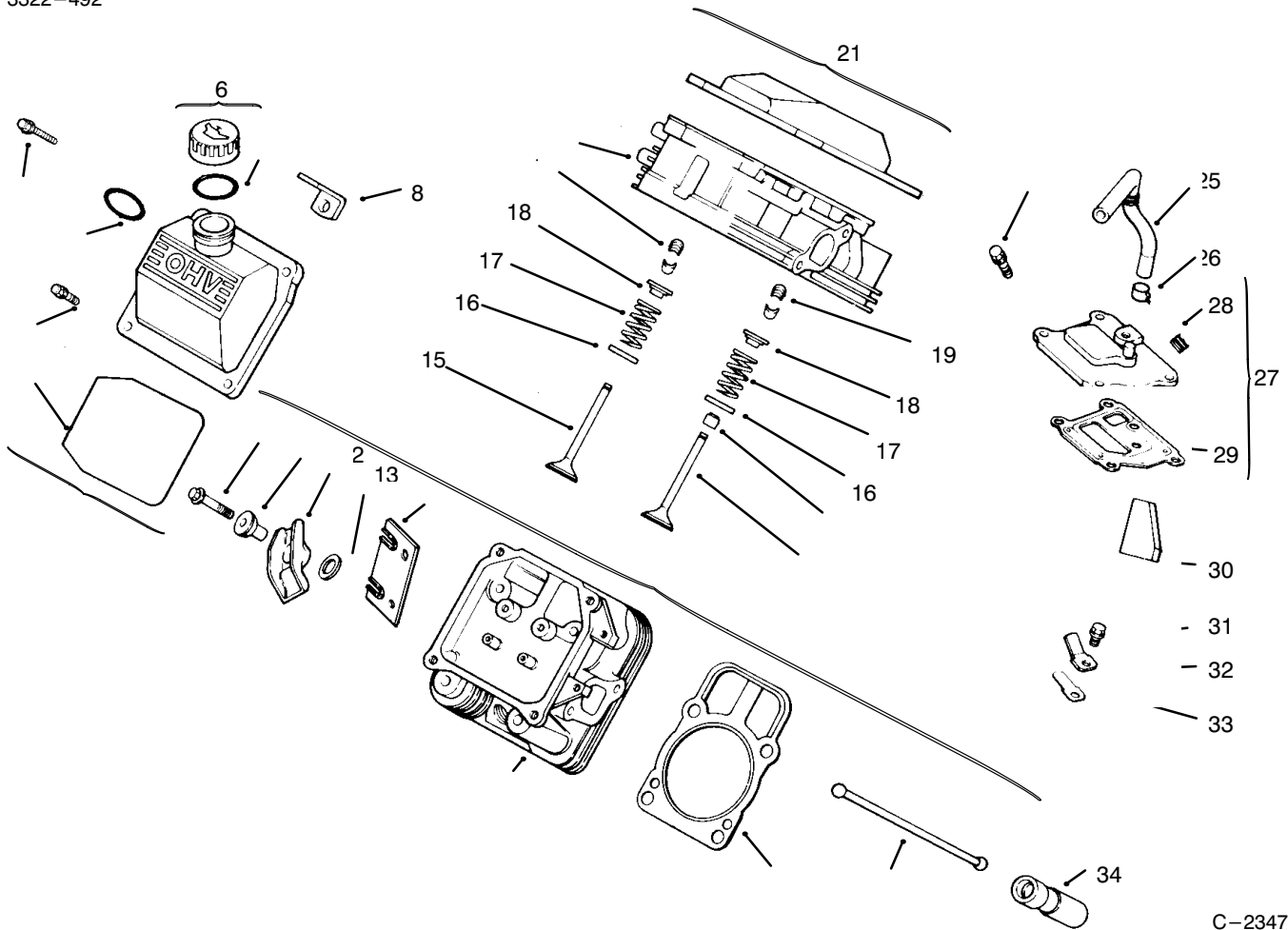


C-1611

## CRANKCASE

Ref. No.	Part No.	Description	No. Used	Ref. No.	Part No.	Description	No. Used
1		Cylinder block (Use Miniblock 24 782 01)	1	11	24 012 05	Camshaft	1
2	12 380 04	Pin - Hitch	1	12	12 422 09	Shim - Camshaft, Green	A/R
3	X-25-102	Washer - Plain	1	*	12 422 13	Shim - Camshaft, Black	A/R
4	12 032 01	Seal - Governor Cross Shaft	1	*	12 422 07	Shim - Camshaft, White	A/R
5	X-25-63	Washer	1	*	12 422 08	Shim - Camshaft, Blue	A/R
6	24 144 01	Shaft - Governor Cross	1	*	12 422 10	Shim - Camshaft, Yellow	A/R
7	24 032 01	Seal - Oil	1	*	12 422 11	Shim - Camshaft, Red	A/R
8	X-75-10	Plug, Sq. Hd.	2	*	12 422 12	Shim - Camshaft, Gray	A/R
9	12 380 03	Pin - Dowel	6	*	24 782 01	Short Block	1
10	52 139 09	Plug - Cup	1	*	24 755 03	Set - Gasket	1

\*Not Illustrated

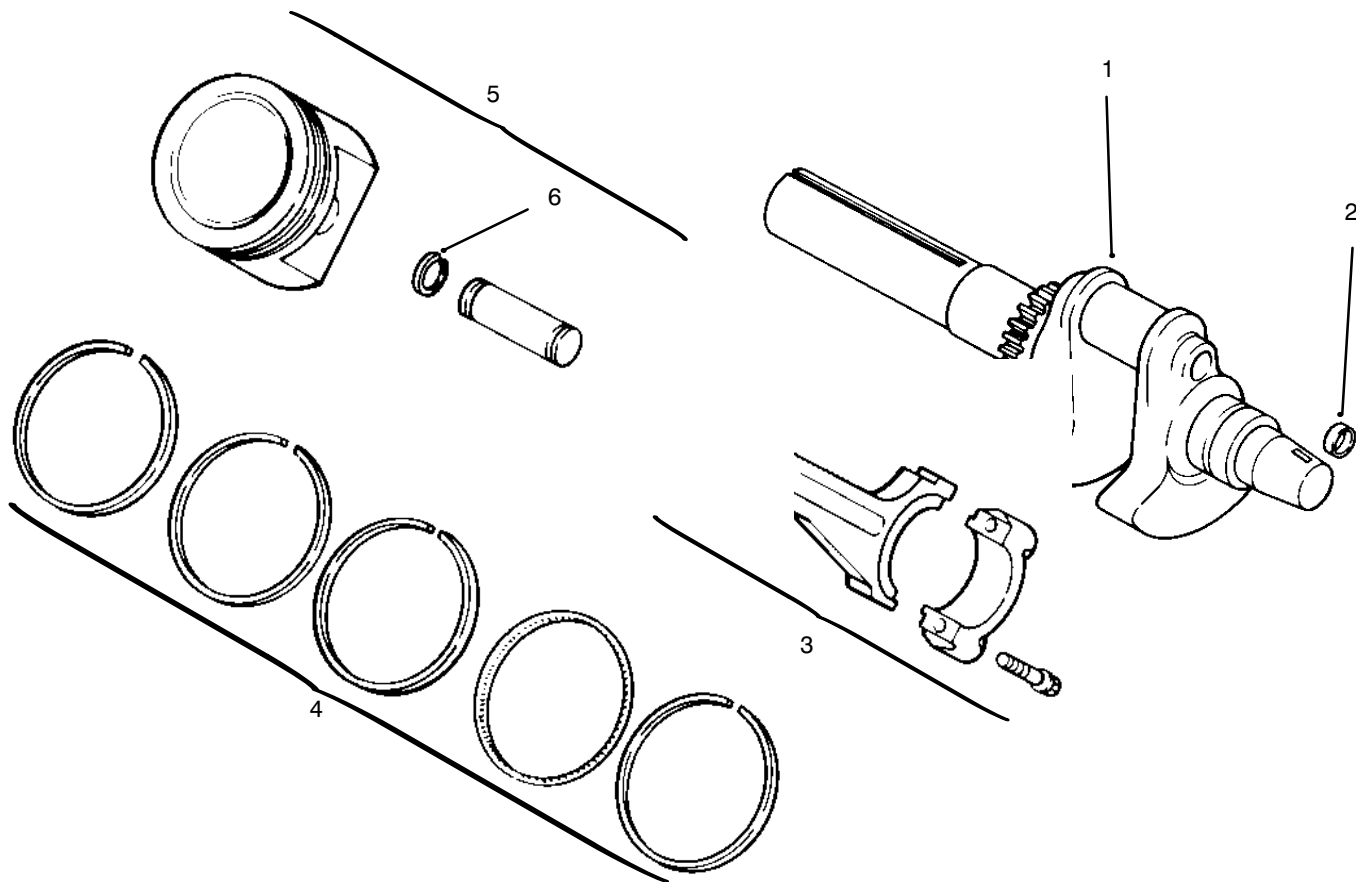


C-2347

## CYLINDER HEAD, VALVE & BREATHER

Ref. No.	Part No.	Description	No. Used
1	24 755 75	Kit – Valve Cover (Incl. Ref. #2-4)	1
2	24 153 12	"O"Ring	1
3	24 086 32	Screw – Shoulder	4
4	24 153 09	"O"Ring	1
5	12 086 16	Screw	8
6	25 755 13	Kit – Oil Fill Cap (Incl. Ref. #7)	1
7	12 153 03	"O"Ring	1
8	24 445 01	Strap – Lifting	1
9	M-0640034	Screw	4
10	24 755 61	Kit – Valve Train (Incl. Ref. # 11-14 & 35)	1
11	24 194 02	Pivot – Rocker Arm	4
12	24 186 03	Arm – Rocker	4
13	M-0631005	Washer – Plain	4
14	24 146 09	Plate – Guide	2
15	24 016 01	Valve – Exhaust (Std.)	2
*	24 016 02	Valve – Exhaust (.25)	2
16	235011	Retainer – Spring	4
17	24 089 02	Spring – Valve	4
18	12 173 01	Cap – Valve Spring	4
19	12 755 03	Kit – Retainer	4

Ref. No.	Part No.	Description	No. Used
20	24 318 09	Head Assembly (# 1 Cylinder)	1
21	24 755 74	Kit – Valve Cover (Incl. Ref. # 2 & 3)	1
22	24 032 05	Seal – Valve Stem	2
23	24 017 01	Valve – Intake (Std.)	2
*	24 017 02	Valve – Intake (.25)	2
24	M-0645020	Screw	4
25	24 326 06	Hose – Breather	1
26	X-426-9	Clamp – Breather	1
27	24 033 01	Kit – Breather w/Plug (Incl. Ref. # 28 & 29)	1
28	X-75-23	Plug	1
29	24 041 23	Gasket – Breather	1
30	24 050 01	Filter – Breather	1
31	M-0545010	Screw	1
32	12 018 01	Retainer – Reed	1
33	24 402 03	Reed	1
34	12 351 01	Lifter – Valve	4
35	24 411 04	Rod – Push	4
36	24 041 08	Gasket – Cylinder Head	2
37	24 318 10	Head – Assembly (# 2 Cylinder)	2



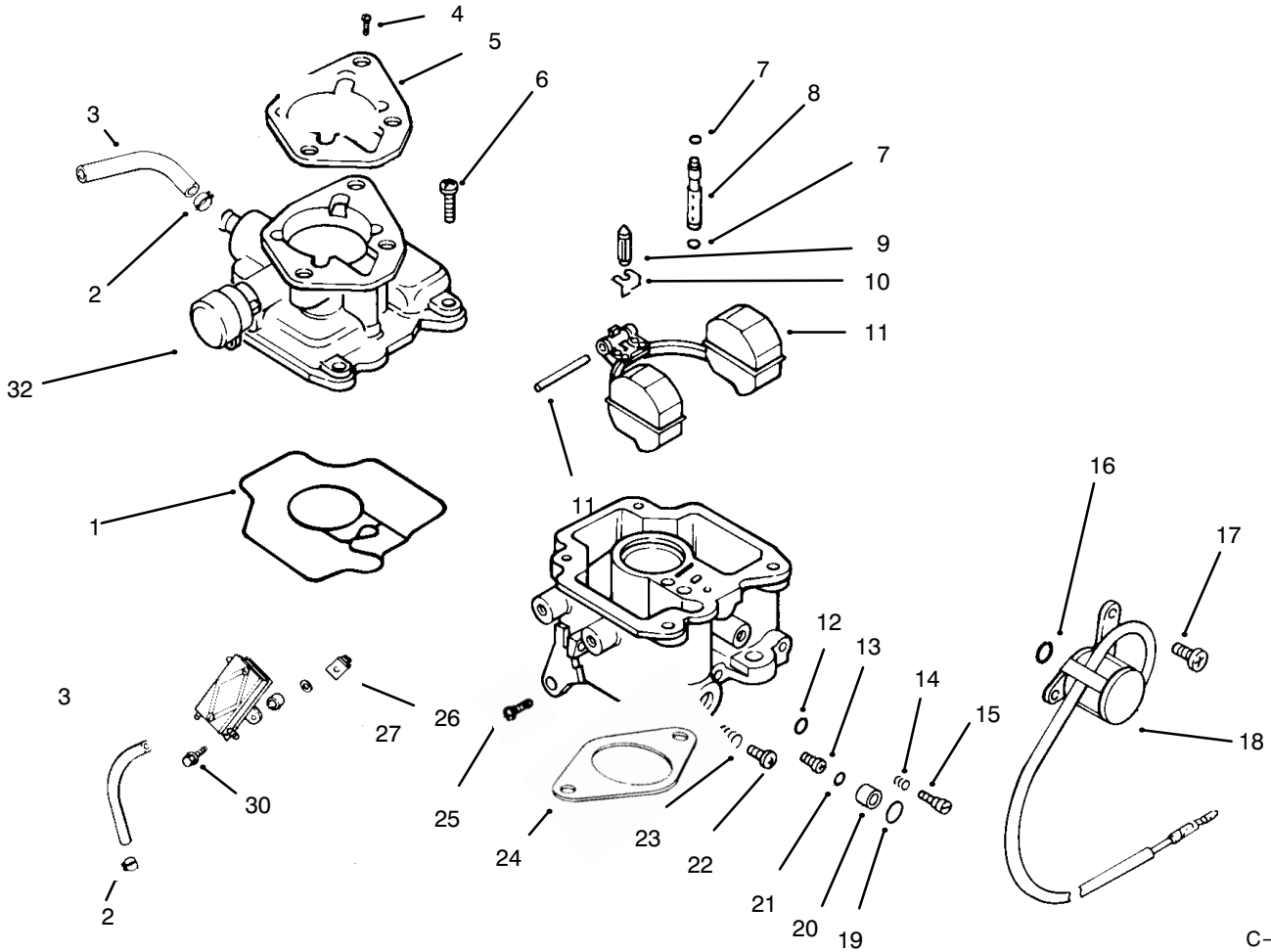
C-1613

## CRANKSHAFT, PISTON AND RINGS

Ref. No.	Part No.	Description	No. Used
1	24 014 32	Crankshaft	1
2	12 139 01	Plug, cup	1
3	24 067 05	Connecting Rod (Std.)	2
*	24 067 06	Connecting Rod (.25)	2
4	24 108 01	Ring Set (Std.)	1
*	24 108 02	Ring Set (.25)	1

Ref. No.	Part No.	Description	No. Used
*	24 108 03	Ring Set (.50)	1
5	24 874 01	Piston w/Ring Set (Std.) (Incl. Ref. # 4-6)	2
*	24 874 02	Piston w/Ring Set (.25)	2
*	24 874 03	Piston w/Ring Set (.50)	2
6	24 018 01	Retainer - Piston Pin	4

\*Not Illustrated



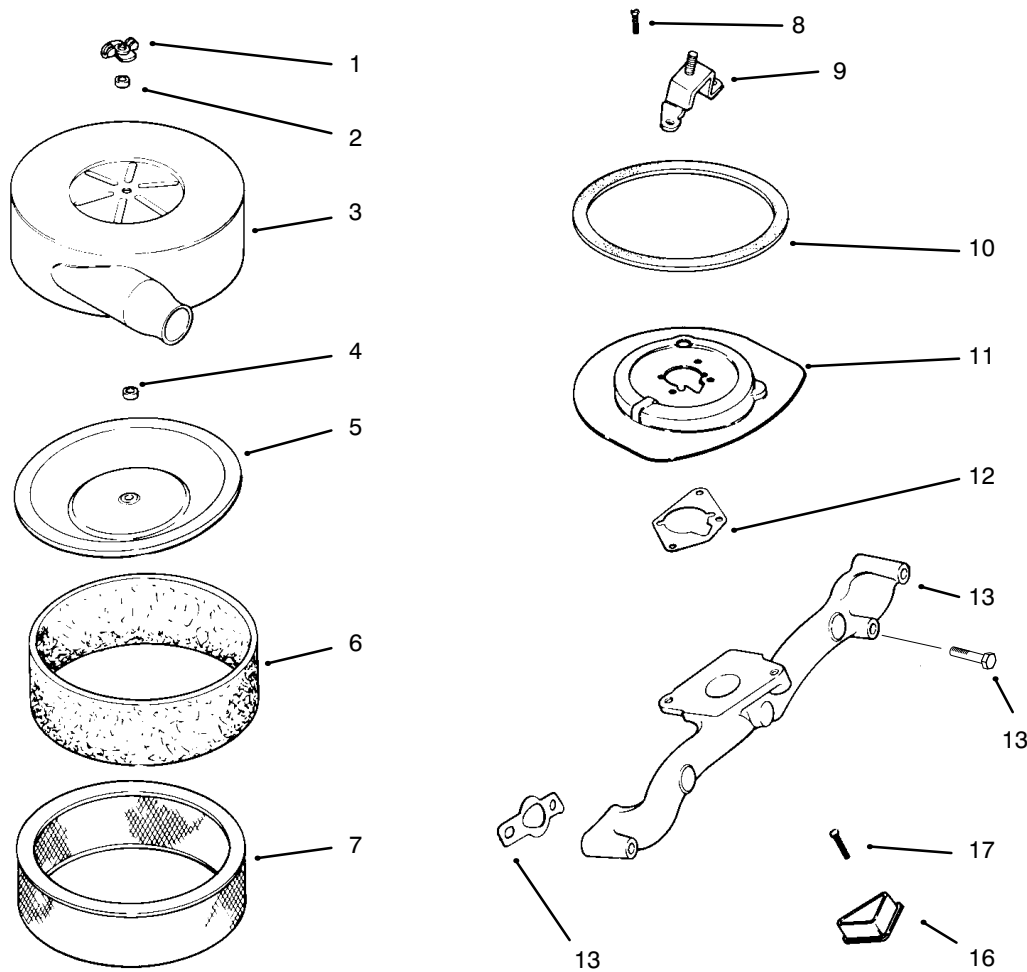
C-2348

## CARBURETOR AND FUEL PUMP

Ref. No.	Part No.	Description	No. Used
1	24 041 09	Gasket – Carburetor Body	1
*	24 853 02	Kit – Carburetor w/Gasket (Incl. Ref. #1–15, 19–23 & 29)	1
2	X-426-9	Clamp – Hose	4
3	25 353 10	Line – Fuel 9"	1
4	M-0651030	Screw	2
5	24 041 06	Gasket – Air Cleaner	1
6	24 086 09	Screw	4
7	24 153 02	"O"Ring	2
8	24 337 01	Jet – Slow	1
9	24 462 01	Valve – Inlet Needle	1
10	24 154 01	Clip – Inlet Needle Valve	1
11	24 757 02	Kit – Float Repair	1
12	24 153 03	"O"Ring	1
13	24 337 02	Jet – Main	1
14	24 089 11	Spring – Idle Adjust	1
15	24 368 01	Needle – Idle Adjust	1
16	24 153 04	"O"Ring	1
17	24 086 07	Screw	2
18	24 435 01	Solenoid	1
19	24 153 05	"O"Ring	1
20	24 521 01	Seat – Solenoid	1

Ref. No.	Part No.	Description	No. Used
21	24 153 06	"O"Ring	1
22	24 086 10	Screw – Idle Speed Adjust	1
23	24 089 10	Spring – Idle Speed Adjust	1
24	24 041 17	Gasket – Carburetor	1
25	24 086 05	Screw – Throttle Stop	1
26	24 100 01	Nut	2
27	X-25-52	Washer	2
28	52 112 13	Spacer	2
29	24 393 04	Pump – Fuel, Pulse	1
30	24 086 31	Screw	2
31	24 353 02	Line – Fuel 15-1/2"	1
32	24 757 07	Kit – Choke Repair (Incl. Ref. # 33)	1
*33	24 173 02	Cap – Choke Lever	1
*		Carburetor Assembly (Incl. Ref. # 1–25 & 32)	1
*	24 041 17	Gasket – Carburetor	1
*	24 757 03	Kit – Carburetor Repair	1
*	24 757 01	Kit – Solenoid Assembly	1
*	24 755 01	Kit – High Altitude (1500 meters)	1
*	24 755 02	Kit – High Altitude (3000 meters)	1

\*Not Illustrated



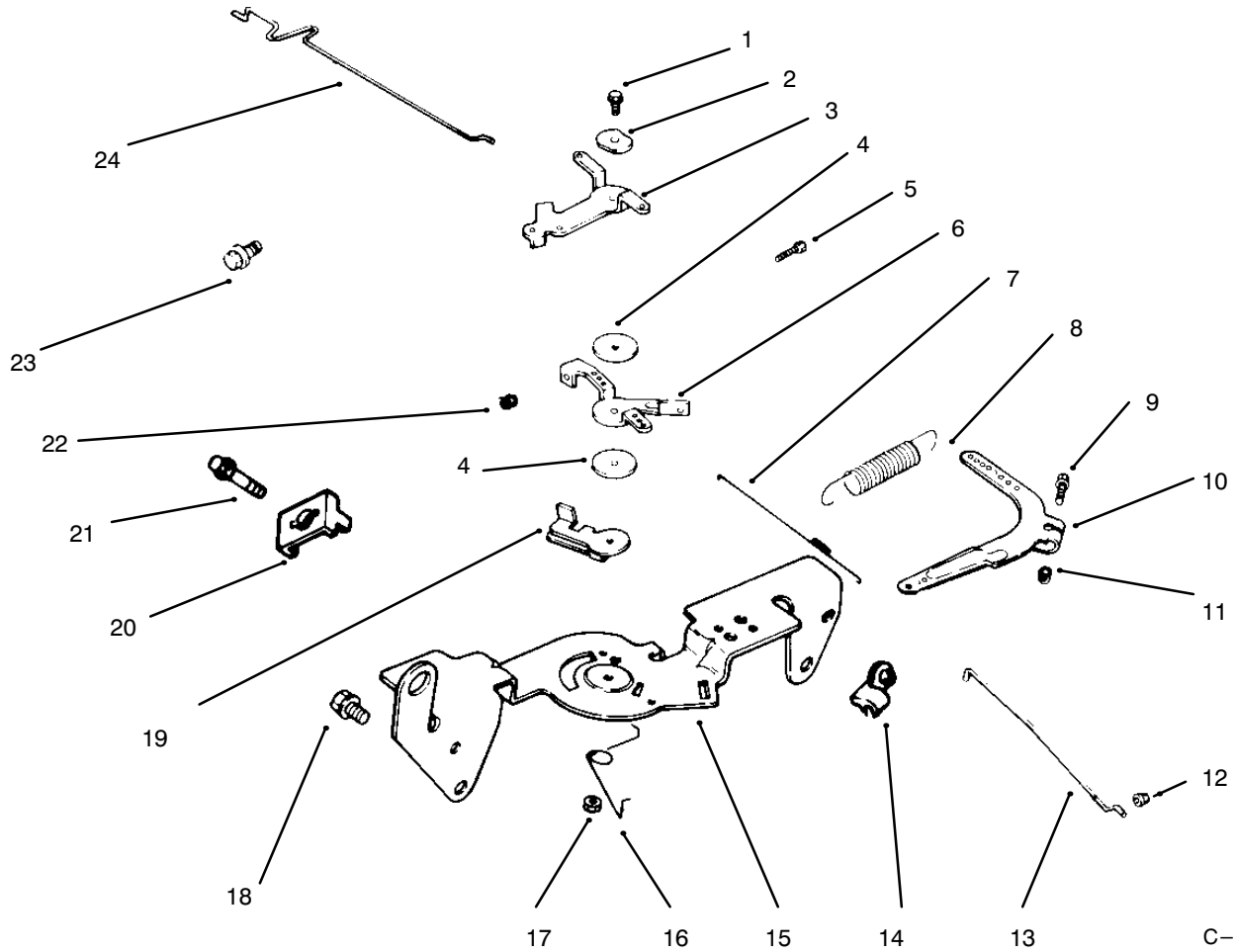
C-2349

## AIR INTAKE/FILTRATION

Ref. No.	Part No.	Description	No. Used
1	12 100 01	Nut – Wing	2
2	230046	Seal – Air Filter	1
3	24 096 34	Cover – Air Cleaner	1
4	231032	Seal – Breather	1
5	24 096 01	Cover – Inner Air Cleaner	1
6	24 083 02	Element – Precleaner	1
7	47 083 03	Element – Air Cleaner	1
8	M-0639016	Screw	3
9	24 126 22	Bracket – Air Cleaner	1

Ref. No.	Part No.	Description	No. Used
10	24 032 07	Seal – Air Cleaner	1
11	24 094 05	Base – Air Cleaner	1
12	24 041 06	Gasket – Air Cleaner	1
13	24 041 01	Gasket – Intake Manifold	2
14	M-0639055	Screw	4
15	24 164 14	Manifold	1
16	24 096 17	Cover – Blower Housing	2
17	15 086 09	Screw	2
*	24 113 17	Decal – Maintenance	1

\*Not Illustrated



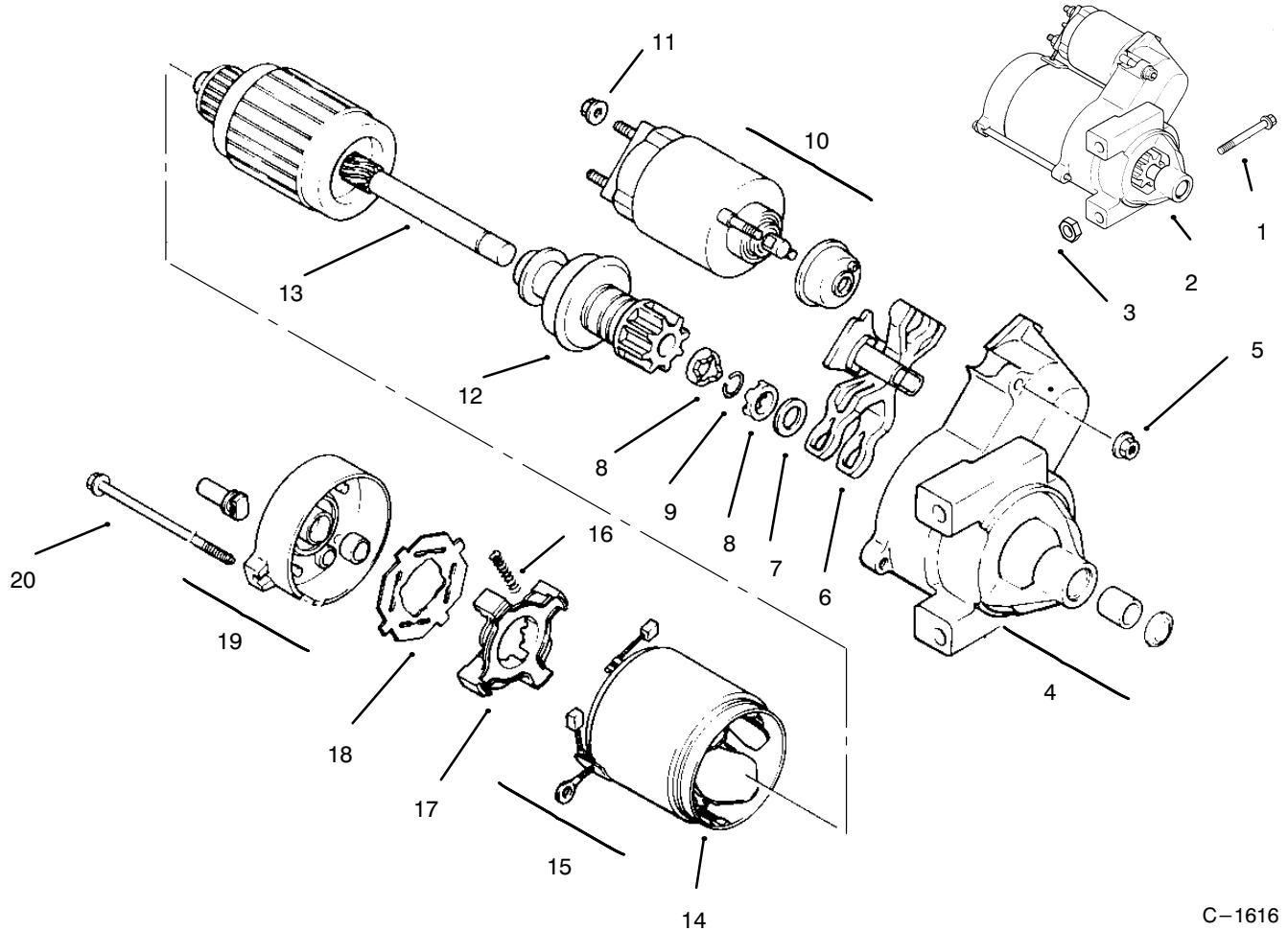
C-1615

## THROTTLE LINKAGE AND GOVERNOR CONTROLS

Ref. No.	Part No.	Description	No. Used
1	SM-0545020	Screw	1
2	41 468 03	Washer - Wave	1
3	24 090 05	Lever - Choke	1
4	24 468 01	Washer	3
5	M-0401025	Screw	1
7	24 089 01	Spring - Linkage	1
6	24 090 03	Lever - Throttle Control	1
8	24 089 18	Spring - Governor	1
9	SM-0642025	Screw	1
10	24 090 14	Lever - Governor	1
11	SM-0641060	Nut	1
12	25 158 08	Bushing - Linkage	1

Ref. No.	Part No.	Description	No. Used
13	24 079 01	Linkage - Throttle	1
14	25 158 11	Bushing - Linkage	1
15	24 126 13	Bracket - Control	1
17	M-0547050	Nut	1
16	24 089 03	Spring - Choke Return	1
18	SM-0645016	Screw	4
19	24 090 07	Lever - Throttle Actuator	1
20	12 237 01	Clamp - Cable	2
21	SM-0545016	Screw	2
22	M-0446030	Nut	1
23	SM-0545016	Screw	1
24	24 079 02	Linkage - Choke	1

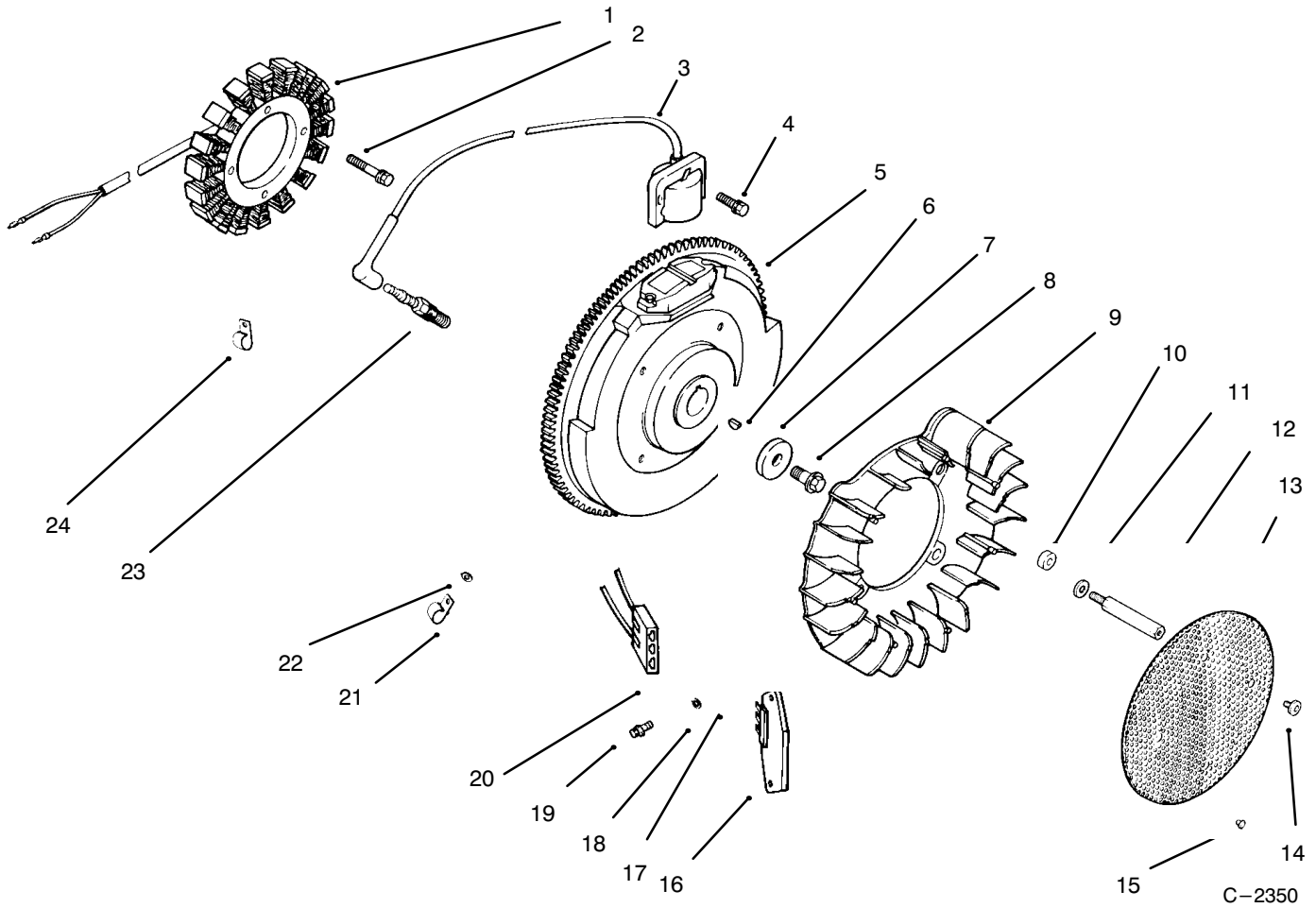
\*Not Illustrated



C-1616

# STARTER

Ref. No.	Part No.	Description	No. Used	Ref. No.	Part No.	Description	No. Used
1	SM-0839080	Screw	2	11	52 100 09	Nut	1
2	24 098 01	Starter - Solenoid Shift (Incl. Ref. # 4-20)	1	12	12 239 01	Drive - Pinion	1
3	M-0841080	Nut	1	13	12 170 03	Armature - Starter	1
4	24 081 04	Cap - Drive End	1	14	12 471 01	Frame	1
5	52 100 10	Nut - Starter	2	15	52 221 01	Kit - Brush (Incl. Ref. # 16)	1
6	12 090 10	Lever - Starter Drive	1	16	52 089 09	Spring - Brush	4
7	52 468 14	Washer - Thrust	1	17	52 323 03	Holder - Brush	1
8	52 100 08	Nut - Stop Collar	2	18	52 168 01	Insulator	1
9	52 141 03	Ring - Retainer	1	19	12 301 01	Cap - Commutator End	1
10	52 435 02	Solenoid	1	20	52 211 05	Bolt	2

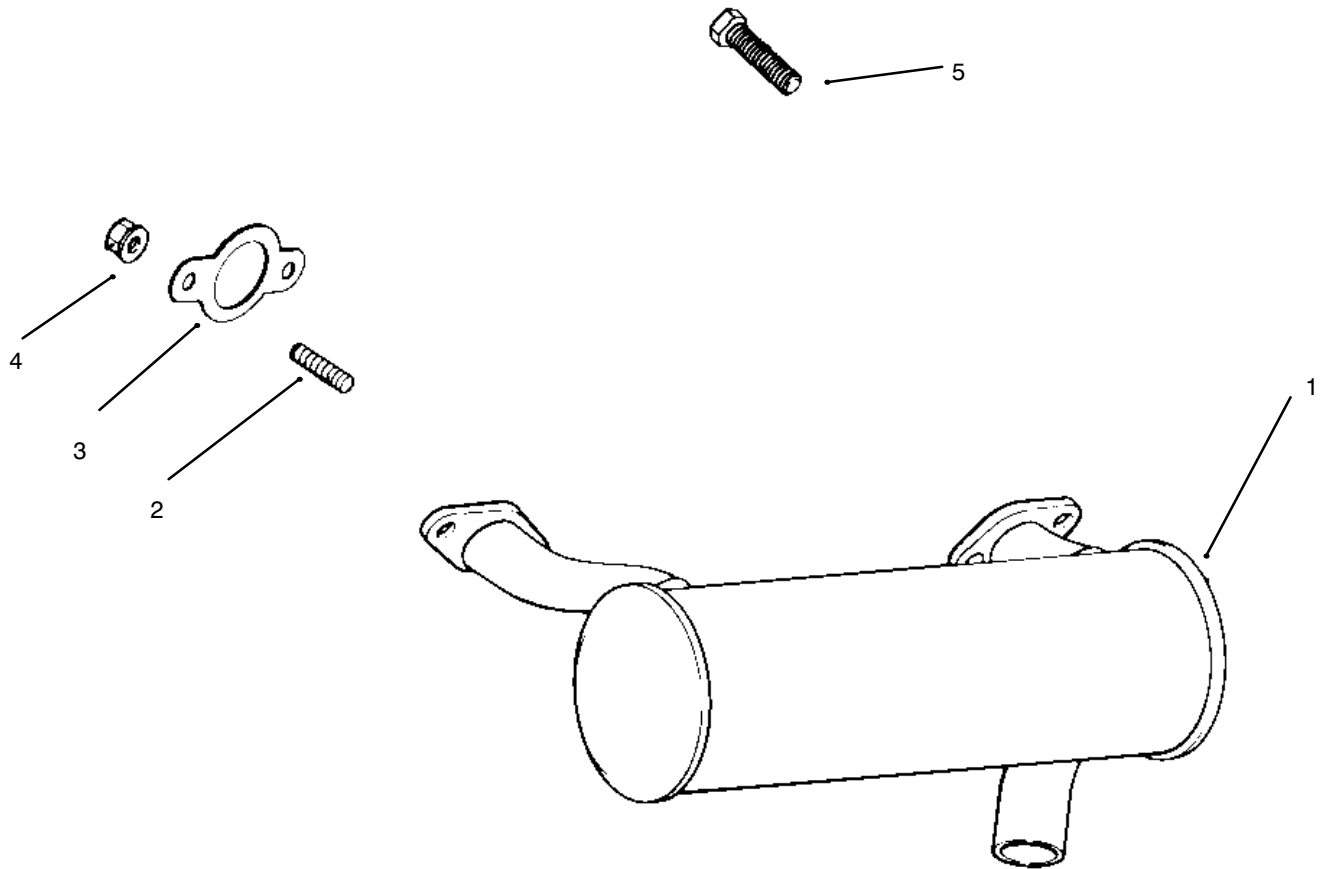


## IGNITION AND CHARGING SYSTEM

Ref. No.	Part No.	Description	No. Used
1	24 085 01	Stator - 15 amp	1
2	M-0548025	Screw	2
3	24 584 01	Module - Ignition	2
4	SM-0545020	Screw	4
5	24 025 01	Flywheel Assembly	1
6	X-42-15	Key	1
7	12 468 03	Washer	1
8	12 086 14	Screw	1
9	24 157 01	Fan	1
10	12 112 01	Spacer - Fan	4
11	X-25-53	Washer	4
12	24 072 01	Stud - Grass Screen	4
13	24 162 13	Screen - Grass	1

Ref. No.	Part No.	Description	No. Used
14	M-0657010	Screw	4
15	25 086 43	Screw - Set	1
16	25 403 03	Regulator - Rectifier	1
17	X-25-63	Washer	1
18	X-25-92	Washer	2
19	24 086 18	Screw	2
20	236602	Connector	1
21	235173	Clip - Cable	1
22	X-25-63	Washer	1
23	12 132 02	Spark Plug	2
24	48 154 02	Clip - Cable	1
*	24 176 40	Harness - Wiring	1
*	24 518 04	Lead - Green, 18 Gauge	1

\*Not Illustrated



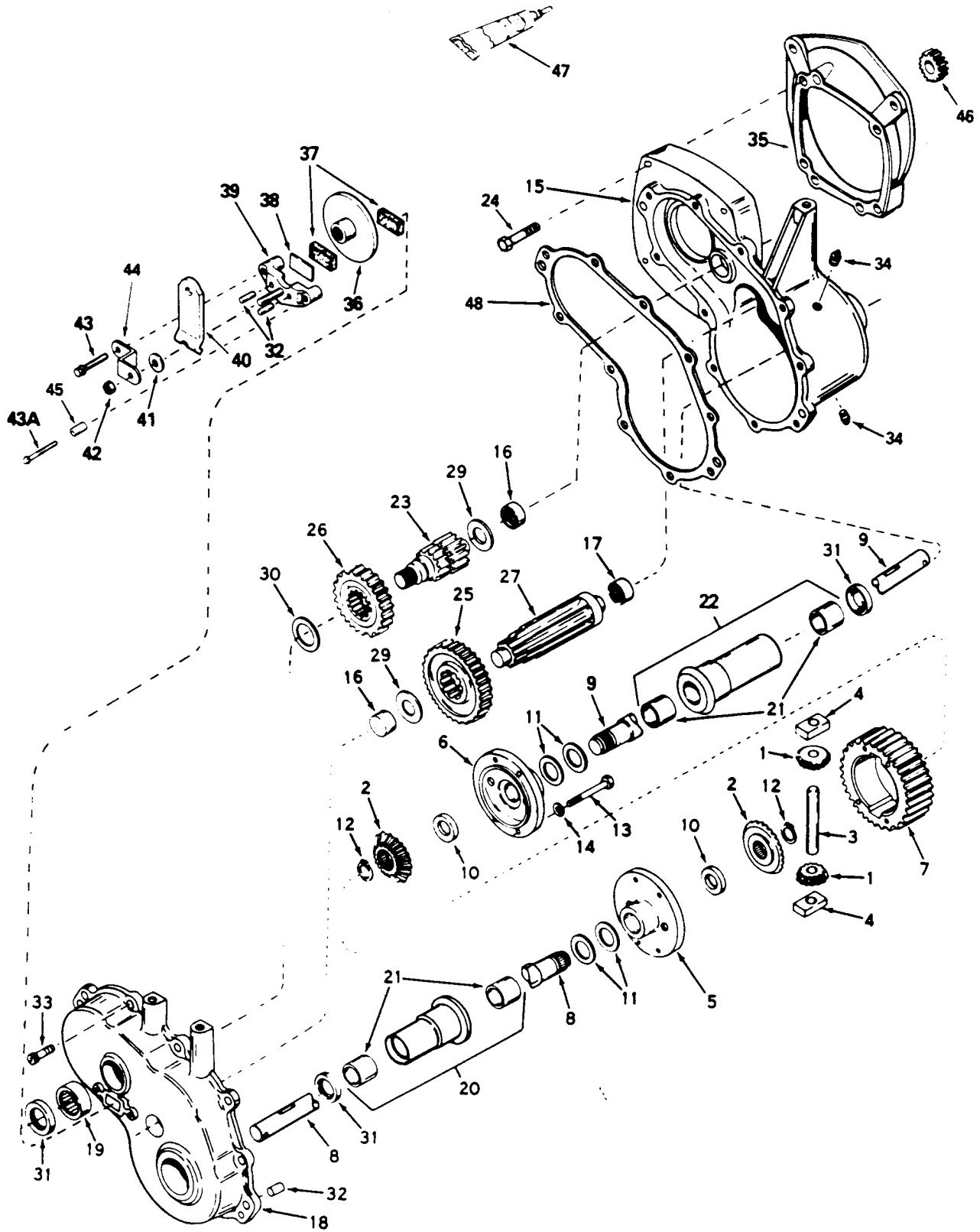
C-1618

## EXHAUST

Ref. No.	Part No.	Description	No. Used
1	24 068 11	Muffler	1
2	M-0829033	Stud - Muffler	4
3	24 041 02	Gasket - Exhaust	2

Ref. No.	Part No.	Description	No. Used
4	M-0841080	Nut	4
5	M-0839020	Screw	1

# DIFFERENTIAL ASSEMBLY NO. 1310-005



Peerless Differential  
Obtain parts from Peerless

C-1619

**DIFFERENTIAL ASSEMBLY NO. 1310-005**

Ref. No.	Part No.	Description	No. Used	Ref. No.	Part No.	Description	No. Used
1	778197	Pinion – Bevel	1	25	778036	Gear – Output	1
2	778366	Gear – Bevel	1	26	778037	Gear – Spur	1
3	786019	Pin – Drive	1	27	776244	Shaft – Output	1
4	786027	Block – Drive	1	29	780001	Washer	1
5	774028A	Carrier – Differential	1	30	780090	Washer	1
6	774029A	Carrier – Differential	1	31	788008	Seal – Oil	1
7	778033A	Gear – Ring	1	32	786026	Pin – Dowel	1
8	775036	Axle – 16-5/8"	1	33	792046	Screw – Thread Forming	1
9	775037	Axle – 21-57/64"	1	34	792122	Plug – Pipe	1
10	780107	Washer	1	35	786112	Plate – Adapter	1
11	780042	Washer – Thrust	1	36	790027	Disc – Brake	1
12	792018	Ring – Snap	1	37	790021	Pad – Brake ( Pack of 2 )	1
13	792020	Screw – Hex. Hd.	1	38	790007	Plate – Brake Pad	1
14	792006	Washer – Lock	1	39	790025	Holder – Brake Pad	1
15	770080A	Case Assembly (Incl. Ref. #16 & 17)	1	40	790010	Lever – Brake	1
16	780013	Bearing – Needle	1	41	792076A	Washer – Flat	1
17	780088	Bearing – Needle	1	42	792075	Nut – Lock	1
18	772085	Cover Assembly (Incl. Ref. #16 & 19)	1	43	792073A	Screw – Thread Forming	1
19	780089	Bearing 0 Needle	1	43A	792085A	Screw – Thread Forming	1
20	782041A	Housing Assembly – 6-5/8" (Incl. Ref. #21)	1	44	786086	Bracket	1
21	780054	Bushing	1	45	786066	Spacer	1
22	782042A	Housing Assembly – 8-5/8" (Incl. Ref. #21)	1	46	778194	Gear – Spur 22T	1
23	776245	Shaft – Brake	1	47	510334A	Gasket Eliminator	1
24	792120	Screw – Hex. Hd.	1	48	788044	Gasket	1
					730229A	Gear Oil	1
					799025	Kit – Axle (Incl. 1,2,8,9,12 &31)	1

Peerless Differential  
Obtain parts from Peerless

# TORO PART NUMBER INDEX

Part No.	Description	Pg. No.	Ref. No.	Qty.	Part No.	Description	Pg. No.	Ref. No.	Qty.
102950	Washer	2	72	1	54-0290	Seal Repair Kit	11	*	1
105805	Nut	2	73	1	54-0300	Piston	11	3	1
109989	Spacer	8	3	4	54-0310	Head	11	6	1
113050	Cover - P.T.O. Switch	2	39	1	54-0320	Gear	18	3	1
113179	Nut	2	38	1	54-0330	Frame - Rear	3	13	1
114263	Spring - Seat	8	9	2	54-0450	Axle Stand R.H.	6	60	1
116716	Switch - Clutch & Brake	2	41	1	54-0460	Axle Stand - L.H.	5	39	1
3-6498	Washer	18	12	1	54-0560	Spindle L. H.	3	22	1
3-6498	Washer - Thrust	3	8	5	54-0570	Spindle R.H.	3	7	1
3-6498	Washer - Thrust	2	52	2	54-0930	Pulley - Transmission	18	38	1
5-0930	Key	13	21	1	54-0960	Spring - Parking Brake	10	42	1
12-1109	Lever - Idler	10	27	1	54-1000	Tower - Top	1	24	1
12-5950	Rod - Battery Support	12	18	1	54-1010	Channel - Front	5	45	1
14-4109	Hood	12	3	1	54-1120	Bracket - Filter Head	6	64	1
19-1470	Bolt - Shoulder	5	41	2	54-1130	Link - Idler Anchor	5	22	2
21-9260	Cover - Dust	1	21	1	54-1170	Spring - Extension	10	30	1
22-8330	Plug	9	19	1	54-1220	Support - Seat R.H.	7	8	1
22-8340	Spring	9	21	1	54-1260	Clamp - Battery	12	9	1
22-8350	Ball	9	22	1	54-1270	Bracket - Parking Brake	10	8	1
22-8360	Pin - Cam	9	24	1	54-1310	Hinge - Seat	7	3	1
22-8370	Seat - Check Valve	9	23	1	54-1340	Link - Steering	2	43	1
22-8380	Retainer - Spring	9	3	2	54-1380	JackShaft - VBelt	5	40	1
22-8410	Spring	9	4	1	54-1380	V-Belt	13	17	1
22-8480	Ring - Retaining	9	6	1	54-1390	VBelt - Traction	6	59	1
22-8490	Ring - Retaining	9	7	1	54-1390	V-Belt	13	18	1
22-8500	ORing	9	2	2	54-1410	Spring - Idler	5	21	2
23-1120	Washer - Flat	6	58	2	54-1420	Shaft - Steering	2	30	1
24-5790	Weight - Rear	3	17	3	54-1440	Bracket - Tunnel	2	50	2
27-0410	Bolt - Shoulder	5	28	2	54-1451	Control - Throttle, Choke	1	25	2
27-5200	Spacer	9	5	1	54-1470	Footrest - L.H.	2	63	1
27-6230	Bolt - Shoulder	10	31	1	54-1490	Rod - Steering	17	40	1
27-9080	Bushing	1	1	3	54-1491	Rod - Steering, Rear	3	29	1
27-9080	Bushing	10	6	4	54-1550	Support - Hood	7	30	1
27-9080	Bushing	3	31	2	54-1600	Jackshaft	17	29	1
28-1120	Plug	9	18	1	54-1770	Bracket - Cable Traction	2	64	1
28-2480	Washer - Flat	3	2	2	54-1810	Plate - Engine	5	11	4
28-3894	Wire - Positive	13	29	1	54-1830	Support - Shield	5	25	1
28-3940	Collar - Steering Shaft	2	45	2	54-1850	Support - Battery	12	16	1
29-0590	Screen	12	35	1	54-1860	Stop - Hood Upper	12	6	2
29-6163	Switch	18	26	1	54-1870	Stop - Hood, Lower	5	31	2
36-3220	Pulley - Idler	10	26	1	54-1880	Strap - Fuel Tank	12	4	2
36-4950	Cap - Oil	12	36	1	54-1890	Foam - Tank	12	20	2
37-7250	Spacer	6	53	2	54-1900	Tower - Front	1	3	1
43-5220	Ring - Retaining	11	12	1	54-1910	Channel - Side R.H.	5	6	1
44-8160	Washer - Flat	13	14	1	54-1920	Channel - Side L.H.	5	33	1
44-8310	Ring - Retaining	14	3	2	54-1930	Fender R.H.	5	1	1
44-8320	Spring	14	10	3	54-1940	Fender L.H.	5	36	1
44-8330	Spacer - Bearing	14	6	1	54-1950	Bracket - Support Bearing	1	22	2
44-8340	Collar - Bearing	14	7	1	54-2000	Pin - Pivot	10	13	1
44-8360	Field Coil, Rotor & Bearing	14	4	1	54-2040	Follower Lever	2	54	1
44-8370	Armature & Pulley Assembly	14	5	1	54-2060	Bellcrank Assembly	17	41	1
46-6680	Bushing	3	9	6	54-2070	Anchor - Spring	5	18	1
46-6680	Bushing - Flanged	17	42	2	54-2100	Pin - Pivot	10	39	2
46-8091	Screw	12	42	2	54-2110	Lever - Brake	10	2	1
46-8560	Screw	5	35	7	54-2120	Link - Parking Brake	10	1	1
46-8560	Screw - Hex. Hd.	1	5	25	54-2160	Bracket - Anchor	13	10	1
46-8560	Screw - Thread Forming	17	44	2	54-2260	Pad Footrest L.H.	2	62	1
47-1980	Cover Steering Shaft	2	31	1	54-2270	Pad - Footrest R.H.	2	68	1
48-7610	Screw	13	4	5	54-2290	Pipe - Exhaust	13	13	1
49-6430	Pad - Reverse	1	12	1	54-2330	Pulley - Engine	13	19	1
49-6470	Pad - Accelerator	1	4	1	54-2380	Pulley - Input	17	28	1
51-0780	Slide Seat Assembly R.H.	8	*	1	54-2390	Pulley - Output	17	1	1
51-0790	Slide Seat Adjust Assembly	8	2	1	54-2500	Channel - Middle	5	19	1
54-0090	Valve Assembly	7	23	1	54-2590	Hydraulic Hose Assembly	16	7	1
54-0110	Filter - Transmission Oil	5	44	1	54-2610	Hydraulic Hose Assembly	16	5	1
54-0140	Hub - Wheel	4	2	2	54-2620	Hydraulic Hose Assembly	16	6	1
54-0150	Cylinder - Lift	10	18	1	54-2630	Follower - Steering Shaft	2	53	1
54-0220	Assembly - Clutch	13	16	1	54-2640	Cable - Traction Control	2	44	1
54-0230	Field Assembly	14	1	1	54-8970	UBolt	17	22	1
54-0240	Fan	18	40	1	55-3570	Cap - Fuel	12	2	1
54-0260	Spool	9	1	1	55-3630	Adjustable Relief Valve	9	*	1
54-0280	Shaft	11	13	1	55-3640	Seat - Relief	9	8	1

\*Not Illustrated

# TORO PART NUMBER INDEX (Cont.)

3322-492

Part No.	Description	Pg. No.	Ref. No.	Qty.	Part No.	Description	Pg. No.	Ref. No.	Qty.
55-3650	Plug	9	26	1	62-4530	Idler - VBelt	5	43	2
55-4320	Gasket	18	2		62-4540	Idler - Flat	6	56	2
55-4860	Guide - Belt	5	37	1	62-7400	Decal - Toro	2	70	1
55-7120	Switch - Brake	10	9	1	63-7590	Relay	7	42	1
55-7310	Bracket - Idler	10	34	1	63-8360	Key	2	35	2
55-8660	Assembly - Clamp	13	9	1	65-5100	Handle	12	41	1
56-2760	Spring - Extension	10	21	2	66-0120	Knob	1	26	2
56-2800	Screw - Hex. Socket Hd.	19	1	1	66-1570	Frame - Lift	10	14	1
56-2810	Bearing - Input	20	47	1	68-7330	Decal - Danger	12	*	1
56-2820	Seal - Oil	20	46	1	72-4060	Bearing Assembly	17	9	2
56-2830	Charge Pump Assembly	19	2	1	74-0110	Pedal - Traction	1	11	1
56-2850	Ring - Seal	19	4	1	74-0720	Tube - Manual	7	41	1
56-2860	Plate - Pump	19	5	1	75-4130	Spacer	18	27	2
56-2870	Ring - Seal	19	6	1	75-5470	Spacer Bearing	18	22	1
56-2880	Button	19	7	2	75-6820	Meter - Hour	7	29	1
56-2890	Pin - Dowel	19	8	1	76-8640	Stud - Traction	18	13	1
56-2900	Pin - Drive	19	9	1	76-9430	Spring - Extension	17	19	1
56-2910	Input Shaft Assembly	19	10	1	76-9430	Spring - Extension (Ref.)	18	9	
56-2920	Ring - Seal	19	11	1	77-0981	Boot - Terminal	12	10	1
56-2930	Pump Rotor & Ball Assembly	19	12	1	80-3750	Spacer	17	12	2
56-2940	Cam Ring Assembly	19	14	1	80-3760	Support - Seat, Front	7	2	1
56-2950	Piston	19	15	2	80-4910	Footrest - R.H.	2	69	1
56-2960	Ring - Backup	19	16	2	80-4920	Pedal - Accelerator	1	8	1
56-2970	ORing	19	17	2	80-4930	Footrest - Pedal	1	6	1
56-2980	Pin - Coil	19	18	1	82-4640	Battery	12	12	1
56-2990	Pintle Assembly	19	19	1	82-4680	Lever - Valve	7	10	1
56-3000	Ring - Retaining	19	20	2	82-4720	Pad - Footrest	2	74	1
56-3010	Ball	19	21	2	86-9080	Filter Head Assembly	6	63	1
56-3020	Body - Check Valve	19	22	2	88-3850	Wheel - Steering	2	28	1
56-3030	Ball	19	25	1	88-9830	Switch - Ignition	2	36	1
56-3040	Spring - Relief Valve	19	24	1	92-5435	Support - Seat L.H.	7	32	1
56-3050	Plug - Relief Valve	19	23	1	92-6250	Mount - Engine	5	10	1
56-3060	Pin - Dowel	19	26	1	92-6251	Mount - Engine	5	12	1
56-3080	Ring - Retaining	20	49	1	92-6252	Mount - Cylinder	6	47	1
56-3090	Ring - Retaining	20	48	2	92-6254	Bar - Tension	5	24	1
56-3100	Screw - Hex. Socket Hd.	20	45	4	92-6255	Axle - Rear	3	10	1
56-3110	Pin - Roll	20	44	6	92-6257	Plate - Pivot	3	24	1
56-3120	Carrier	19	3	1	92-6259	Bracket	7	43	1
56-3130	Seal - Oil	20	43	1	92-6260	Duct - Engine	13	6	1
56-3140	Control Shaft Kit	20	42	1	92-6266	Panel - Tower Rear	2	37	1
56-3170	Insert - Cam Ring	19	30	1	92-6267	Shield - Heat	12	21	1
56-3180	Spring - Valve	19	27	2	92-6269	Lever - Traction	18	28	2
56-3200	Body - Valve	19	28	2	92-6270	Plate - Traction	18	50	1
56-3210	Ball	19	29	2	92-6273	Bracket - Spring	17	23	1
56-3220	Motor Rotor & Ball Assembly	20	39	1	92-6274	Plug - Cap	12	25	1
56-3230	Output Shaft Assembly	20	40	1	92-6280	Seat	8	1	1
56-3240	Race - Motor	20	41	1	92-6281	Plate - Seat	7	12	1
56-3250	Plug Assembly	20	33	1	92-6282	Switch - Seat	8	11	1
56-3260	ORing	20	34	1	92-6283	Hose - Fuel	12	24	2
56-3270	Seal - Oil	20	35	1	92-6284	Plate - Adapter, Seat	8	5	2
56-3280	Bearing - Output	20	36	1	92-6287	Wire - Ground	13	25	1
56-3290	Ring - Retaining	20	37	1	92-6288	Decal - Service	12	40	1
56-3300	Screw - Hex. Socket Hd.	20	38	2	92-6289	Swing Arm Assembly	18	11	
56-3310	Kit - Overhaul Seal	20	*	1	92-6290	Spacer	18	20	1
56-3320	THook	10	20	1	92-6291	Decal - Refueling	12	38	1
56-3370	Bracket - Spring	10	22	2	92-6292	Pad - Fender R.H.	5	2	1
56-6590	Screw	7	14	1	92-6293	Pad - Fender L.H.	5	38	1
56-6920	Bracket - Cable Extension	10	40	1	92-6533	Cushion Replacement	8	*	1
57-3100	Tie Rod - Steering	3	35	2	93-6696	Decal - Spring Load	10	43	1
59-1470	Shaft - Bellcrank	17	43	1	93-7272	Decal - Caution	5	7	2
59-1500	Pivot - Axle	3	19	1	93-7281	Decal - Throttle Choke	2	32	1
59-1550	Pedal - Shaft	2	65	1	93-7284	Decal - Switch	2	40	1
59-1610	Tube - Grease Fitting	1	14	1	93-7296	Decal - Parking Brake	7	1	2
59-1620	Bracket - Transaxle	17	15	1	93-7300	Decal - Lift Control	7	13	1
60-8990	Plate - Transaxle	17	17	1	93-7306	Decal - Tunnel	2	47	1
60-9050	Bearing - Steering Shaft	2	46	1	93-7331	Decal - Warning	10	29	2
60-9130	Bracket - Jackshaft	17	3	1	93-7823	Decal - Oil	6	51	1
60-9140	Frame - Footrest	2	51	1	93-8069	Decal - Hot Surface	13	5	1
60-9150	Tunnel	2	66	1	93-8071	Decal - Hot Surface	5	32	1
61-9780	Hub Cap	3	1	2	93-9475	Bracket - Hydraulic Lock	7	51	1
62-4040	Tank - Fuel	12	15	1	93-9476	Spacer - Latch	7	48	1
62-4420	Spacer	3	32	9	93-9477	Cover - Belt	7	55	1

\*Not Illustrated

# TORO PART NUMBER INDEX (Cont.)

Part No.	Description	Pg. No.	Ref. No.	Qty.	Part No.	Description	Pg. No.	Ref. No.	Qty.
93-9478	Guard - Muffler	13	34	1	302-60	Fitting - Grease 905	18	10	
94-1283	Control Block	7	20	1	321-2	Screw	10	36	2
94-5410	Decal - Groundsmaster 120	12	37	2	321-2	Screw - Hex. Hd.	1	27	4
94-5848	Harness - Wire	15	*	1	321-2	Screw - Hex. Hd.	18	43	1
94-5849	Diode	15	*	1	321-3	Screw	6	49	2
94-7691	Adapter	18	6	2	321-3	Screw - Hex. Hd.	12	1	2
94-7691	Adapter - Hydraulic	12	29	1	321-3	Screw - Hex. Hd.	1	9	2
94-9695	Filter - Fuel	12	26	1	321-4	Screw	8	10	2
98-0777	Transmission - Hydrostatic	18	4	1	321-4	Screw	3	15	4
98-0781	Reservoir - Hydraulic	12	34	1	321-4	Screw	7	36	5
98-0792	Bracket - Idler Mount	6	55	1	321-4	Screw - Hex. Hd.	2	61	14
98-0795	Lever - Idler	6	52	2	321-5	Screw - Hex. Hd.	7	54	1
98-2850	Differential Assembly	17	21	1	321-14	Screw	5	16	2
98-2851	Hydraulic Hose Assembly	16	3	2	321-23	Screw	7	9	2
98-2852	Hydraulic Hose Assembly	16	1	1	321-23	Screw - Hex. Hd.	7	7	1
98-2852	Hydraulic Hose Assembly 20	12	44	1	322-2	Screw	5	30	2
98-2853	Hydraulic Hose Assembly	16	2	1	322-3	Screw - Hex. Hd.	12	5	2
98-2853	Hydraulic Hose Assembly 10	12	28	1	322-4	Screw	8	4	4
98-2876	Adapter - Hydraulic	12	45	1	322-4	Screw	7	6	10
98-8000	Guard - Tank	13	37	1	322-4	Screw	5	26	13
218-461	Nut - Lock	2	34	1	322-4	Screw	10	33	4
231-122	Tire	4	9	2	322-4	Screw - Hex. Hd.	1	2	19
231-126	Tire	3	5	2	322-4	Screw - Hex. Hd.	12	17	2
232-27	Valve Stem w/Cap	4	7	2	322-4	Screw - Hex. Hd.	17	18	6
232-27	Valve Stem w/Cap	3	36	2	322-4	Screw - Hex. Hd.	17	5	6
233-37	Knob	10	3	1	322-5	Screw	8	6	4
233-37	Knob	7	11	1	322-5	Screw	13	32	2
233-67	Knob	7	50	1	322-6	Screw	5	9	8
237-42	ORing	9	20	2	322-6	Screw	10	11	2
237-42	ORing	7	24	2	322-6	Screw	5	23	11
237-78	ORing	10	17	2	322-6	Screw - Hex. Hd.	18	15	2
237-78	ORing	7	19	2	322-7	Screw - Hex. Hd.	18	17	1
237-79	ORing	18	7	2	322-10	Screw	4	5	2
237-79	ORing	6	62	1	322-10	Screw - Hex. Hd.	2	67	2
237-80	ORing	12	30	2	322-10	Screw - Hex. Hd.	17	11	4
237-80	ORing	18	49	2	323-7	Screw	5	20	3
237-100	Grommet	12	19	1	323-7	Screw - Hex. Hd.	13	36	1
242-50	Nut	4	6	8	323-8	Screw - Hex. Hd.	17	10	4
242-60	Rim	3	6	2	323-9	Screw	13	30	2
242-71	Bolt - Wheel	4	1	8	323-9	Screw	6	57	2
242-76	Rim	4	8	2	323-10	Screw	10	25	1
2411-34	Ball Joint	1	16	1	323-10	Screw - Hex. Hd.	13	22	1
2411-34	Joint - Ball	18	30	1	323-11	Screw	5	42	2
2412-93	Clamp - Hose	8	7	1	323-12	Screw - Hex. Hd.	13	23	1
2412-93	Clamp - Wire	7	47	1	323-13	Screw - Hex. Hd.	18	46	1
2412-100	JClamp	5	13	2	323-14	Screw - Hex. Hd.	18	34	2
2412-100	RClamp	12	22	1	323-16	Screw - Hex. Hd.	18	47	1
2412-108	Clamp - Hose	12	23	4	324-7	Screw	3	27	5
2412-120	RClamp	7	38	2	324-7	Screw - Hex. Hd.	17	36	2
2412-129	Clamp - Hose	12	43	4	324-7	Screw - Hex. Hd.	2	58	1
251-210	Bearing - Ball	3	3	4	324-11	Screw - Hex. Hd.	13	12	1
251-288	Bearing w/Collar	17	24	2	325-6	Screw	3	38	6
251-291	Bearing - Pulley	14	8	1	327-24	Screw	6	48	1
251-292	Bearing - Field	14	2	1	3212-24	Screw - Hex. Hd.	13	15	1
251-304	Rod End	3	33	2	3217-6	Nut	18	16	4
251-304	Rod End	2	57	1	3217-6	Nut - Square	13	7	1
251-304	Rod End	17	35	1	3220-1	Nut - Hex. Jam	18	31	1
251-305	Rod End	3	25	3	3220-1	Nut - Jam	1	17	1
251-305	Rod End	17	37	1	3220-4	Nut - Hex. Jam	17	38	2
251-307	Bearing	18	19	2	3220-4	Nut - Jam	3	28	3
251-341	Flange - Bearing	17	31	4	3220-6	Nut - Jam	10	12	2
256-154	Bushing	10	32	2	3220-19	Nut - Jam	3	34	2
256-156	Bushing	1	10	2	3229-1	Bolt - Carriage	12	11	2
283-17	Pin - Clevis	7	16	1	3230-1	Bolt - Carriage	17	30	6
283-55	Pin - Clevis	10	23	1	3230-3	Bolt - Carriage	13	20	1
288-10	Cap - Pipe	13	28	1	3234-1	Screw - Hex. Flange Hd.	17	14	5
289-46	Nipple - Pipe	13	27	1	3234-14	Screw	5	3	4
302-2	Fitting - Grease	17	20	2	3241-1	Screw - Set	17	2	4
302-5	Fitting - Grease	3	4	4	3241-2	Screw - Set	18	37	2
302-22	Fitting - Grease	1	13	1	3245-35	Screw - Set	17	8	4
302-49	Fitting - Grease	3	21	3	3250-46	Screw	18	33	2
302-49	Fitting - Grease	17	25	1	3253-3	Washer	10	37	2

\*Not Illustrated

# TORO PART NUMBER INDEX (Cont.)

3322-492

Part No.	Description	Pg. No.	Ref. No.	Qty.	Part No.	Description	Pg. No.	Ref. No.	Qty.
3253-3	Washer - Lock	18	42	1	3296-29	Nut	3	16	8
3253-3	Washer - Lock	6	50	2	3296-29	Nut	13	35	2
3253-4	Washer - Lock	13	8	1	3296-29	Nut - Hex.	12	7	9
3253-5	Washer - Lock	18	39	4	3296-29	Nut - Lock	17	4	A/R
3253-6	Washer - Lock	13	11	2	3296-29	Nut - Lock	4	4	2
3253-7	Washer	3	39	6	3296-29	Nut - Lock	8	8	8
3254-5	Washer - Lock	2	33	1	3296-29	Nut - Lock	18	14	A/R
3254-6	Washer - Lock, Int. Tooth	13	24	1	3296-29	Nut - Lock	1	18	24
3255-5	Washer - Flat	18	45	3	3296-39	Nut - Lock	13	26	2
3255-8	Washer - Lock, Ext. Tooth	6	69	1	3296-41	Nut - Hex.	3	12	1
3256-1	Washer	12	13	4	3296-42	Nut - Lock	6	65	2
3256-1	Washer	10	38	2	3296-42	Nut - Lock	12	14	8
3256-1	Washer - Flat	7	25	10	3296-42	Nut - Lock	7	21	18
3256-3	Washer - Flat	17	7	6	3296-42	Nut - Lock	1	23	16
3256-3	Washer - Flat	6	54	2	3296-44	Nut	10	28	1
3256-4	Washer - Flat	3	26	7	3296-44	Nut	5	17	4
3256-4	Washer - Flat	2	56	1	3296-44	Nut - Lock	17	6	4
3256-22	Washer - Flat	7	49	2	3296-48	Nut	3	23	5
3256-23	Washer	13	33	2	3296-48	Nut - Lock	17	39	2
3256-23	Washer - Flat	5	4	8	3296-48	Nut - Lock	2	55	1
3256-23	Washer - Flat	7	5	6	3296-56	Nut - Lock	7	52	1
3256-23	Washer - Flat	17	45	2	3296-61	Nut	6	46	1
3256-23	Washer - Flat	2	49	4	32103-22	Nut - Wing	12	8	3
3256-24	Washer - Flat	10	4	2	32104-76	Screw	7	40	4
3256-39	Washer	3	40	1	32115-5	Nut - Square	2	60	4
3256-51	Washer	7	39	2	32120-64	Ring - Snap	18	1	1
3256-55	Washer	18	41	1	32121-10	Pin - Roll	1	28	1
3256-68	Washer	18	8	1	32121-20	Pin - Roll	1	19	1
3257-5	Key - Woodruff	17	26	3	32121-31	Pin - Roll	1	20	2
3257-5	Key - Woodruff	18	36	3	32121-51	Pin - Roll	1	7	1
3257-10	Key - Woodruff	4	3	2	32121-51	Pin - Roll	3	30	1
3257-24	Key - Woodruff	18	5	1	32121-77	Pin Roll	2	59	2
3272-6	Pin - Cotter	7	15	1	32128-20	Nut - Flange Lock	2	48	2
3272-10	Pin - Cotter	10	5	2	32128-20	Nut - Flange Lock	6	67	1
3272-12	Pin - Cotter	3	37	2	32144-1	Screw - Thread Forming	10	10	2
3290-199	Nut - Speed	7	53	1	32144-11	Screw - Thread Forming	5	5	2
3290-211	Washer - Spring	5	29	2	32144-15	Screw	3	18	2
3290-250	Pin - Cotter	5	15	2	32144-18	Screw	7	45	2
3290-355	Pin - Cotter	10	24	1	32144-19	Screw - Round Hd.	18	44	3
3290-357	Nut - Wizz	13	31	1	32149-1	Nut - Lock	5	27	1
3290-379	Cable Tie	6	66	7	32149-1	Nut - Lock	17	32	6
3290-440	Washer - Belleville	2	42	1	32151-48	Ring - Retaining	3	11	2
3296-3	Nut - Hex.	1	15	1	32152-10	Nut - Lock	11	2	1
3296-3	Nut - Lock	18	32	1	32153-3	Nut	10	15	2
3296-5	Nut	7	37	1	340-3	Fitting - 905	6	61	2
3296-6	Nut	10	35	1	340-98	Fitting	7	56	1
3296-6	Nut - Lock	14	9	3	340-98	Fitting Hydro	18	51	2
3296-9	Nut	18	25	2	353-375	Fitting - 905	10	19	1
3296-15	Nut	10	41	2	353-375	Fitting - 905	7	22	1
3296-25	Nut	18	29	1	353-431	Fitting - 455	10	16	1
3296-25	Nut	3	41	4	353-511	Fitting	7	17	1
3296-29	Nut	7	4	10	353-511	Fitting - Hydraulic 905	18	35	1
3296-29	Nut	10	7	6	353-545	Fitting	7	18	1
3296-29	Nut	5	14	33					

\*Not Illustrated

## PRODUCT CHANGES

In an effort to make improvements available to TORO owners as quickly as possible, minor changes are incorporated into Toro's products from time to time that do not become immediately shown in the Parts Catalog. If such a change has been made in your unit, which is not reflected in your manual, see your TORO Distributor or his Authorized TORO Service Dealer for information and part numbers.

## IDENTIFICATION AND ORDERING

### MODEL AND SERIAL NUMBERS

The ProLine 120 has two identification numbers; a model number and a serial number. The two numbers are stamped on a plate which is located on the main frame under the seat. In any correspondence concerning the ProLine 120, supply model and serial numbers to assure that correct information and replacement parts are obtained.

To order replacement parts from an Authorized TORO Service Dealer, supply the following information:

1. Model and serial number of the ProLine 120.
2. Part number, description, and the quantity of part(s) desired.

**NOTE:** Do not order by reference number if a parts catalog is being used; use the PART NUMBER.

# TABLE OF CONTENTS

Description	Page	Description	Page
Frame And Steering Assembly .....	1-2	Hydrostatic Transmission Assembly .....	19-20
Rear Axle Assembly .....	3	Engine Kohler Model CH2OQS Spec 64556	
Front Wheel Assembly .....	4	Baffles & Shroud .....	21
Frame And Jackshaft Assembly .....	5-6	Oil Pan/Lubrication .....	22
Seat Support Assembly .....	7	Crankcase .....	23
Seat Assembly .....	8	Cylinder Head, Valve & Breather .....	24
Valve Assembly No.54-0090 .....	19	Crankshaft, Piston & Rings .....	25
Parking Brake & Frame Assembly .....	10	Carburetor And Fuel Pump .....	26
Hydraulic Lift Cylinder No. 54-0150 .....	11	Air Intake / Filtration .....	27
Hood, Fuel Tank & Hydraulic Reservoir Assembly	12	Throttle Linkage & Governor Control .....	28
Engine Assembly .....	13	Starter .....	29
Clutch Assembly No. 54-0220 .....	14	Ignition And Charging System .....	30
Electric Schematic .....	15	Exhaust .....	31
Hydraulic Schematic .....	16	Differential Assembly .....	32-33
Differential Assembly .....	17	Numeric Index, Toro P/N Only .....	34-37
Transmission Assembly .....	18		

## Optional Equipment

Description	Model No./Part No.	Description	Model No./Part No.
Flotation Kit .....	30759	52" Grass Collection System .....	30576
44" Deck Baffle Kit .....	60-9030	44" Recycler Kit .....	59220
52" Deck Baffle Kit .....	68-7210	52" Recycler Kit .....	59225
44" Leaf Mulcher Deck .....	30752	Brake Kit .....	30758
52" Leaf Mulcher Deck .....	30700	Tire Chain Kit .....	56-6630
Wheel Weight Kit .....	56-6620	Arm Rest Kit .....	30707
44" Snowthrower .....	30761	Cab Kit .....	
44" Side Discharge Deck .....	30546		
52" Side Discharge Deck .....	30767	European Complacence Parts Kit .....	93-9450
44" Grass Collection System .....	30751		



