



**Count on it.**

Form No. 380-0032 Rev B

# Parts Catalog

## Golf Sprinkler Body Pilot Valves

Model No. PILOT VALVES



# Ordering Replacement Parts

To order replacement parts, please supply the part number, the quantity, and the description of each part desired.

## Understanding Reference Numbers

Each identified part in an illustration has a reference number. The reference number for a part also appears in the parts list, along with other information about the part.

This catalog uses two special reference number formats, one to indicate parts in a service assembly and another to indicate the quantity of a given part in an illustration.

## Service Assembly Reference Numbers

Parts in service assemblies have reference numbers in the form a:b. The a represents the reference number of the entire service assembly and the b represents a sequential number unique to each part within the service assembly.

For example, a wheel assembly might be identified by reference number 6, the tire by 6:1, the valve by 6:2, and the wheel by 6:3. When you order the assembly identified by reference number 6, you receive all parts identified by reference numbers 6:1, 6:2, and 6:3. However, you may also order any part individually. Reference numbers of this type appear in illustration and in parts lists.

## Reference Numbers Indicating Quantity

In an illustration, if a reference number indicates more than one part, the reference number has the form nX y. The n represents the quantity of the part, the X is the multiplication symbol, and the y represents the reference number.

For example, in an illustration, the reference number 2X 37 means that two of the parts identified by reference number 37 are indicated.

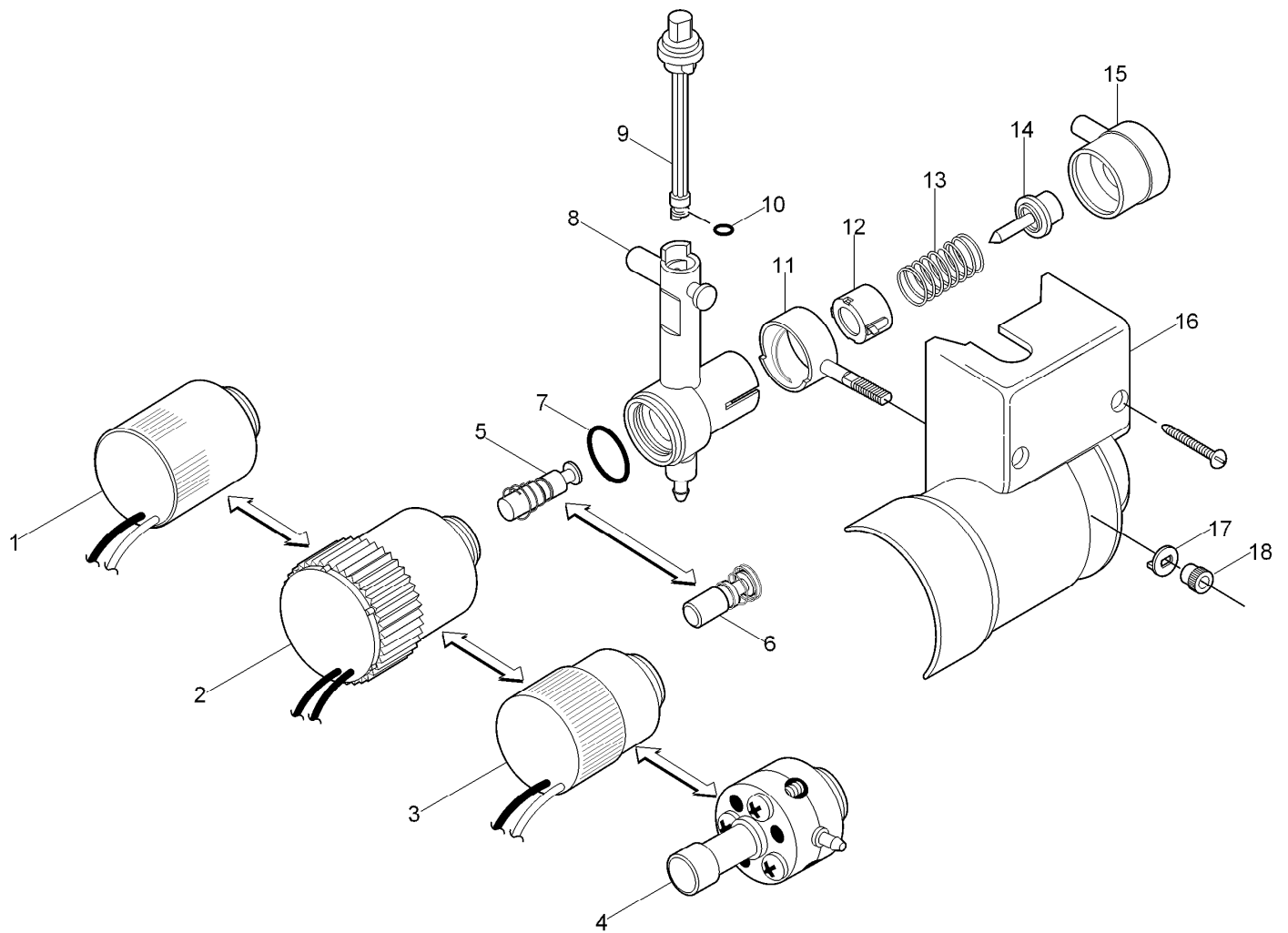
# Contents

Pilot Valve, Select Pressure, 2004-03/2019 ..... 4

Pilot Valve, FLEX, Select Pressure, 04/2019-Present ..... 6

Pilot Valve, INFINITY, 07/2019-Present ..... 8

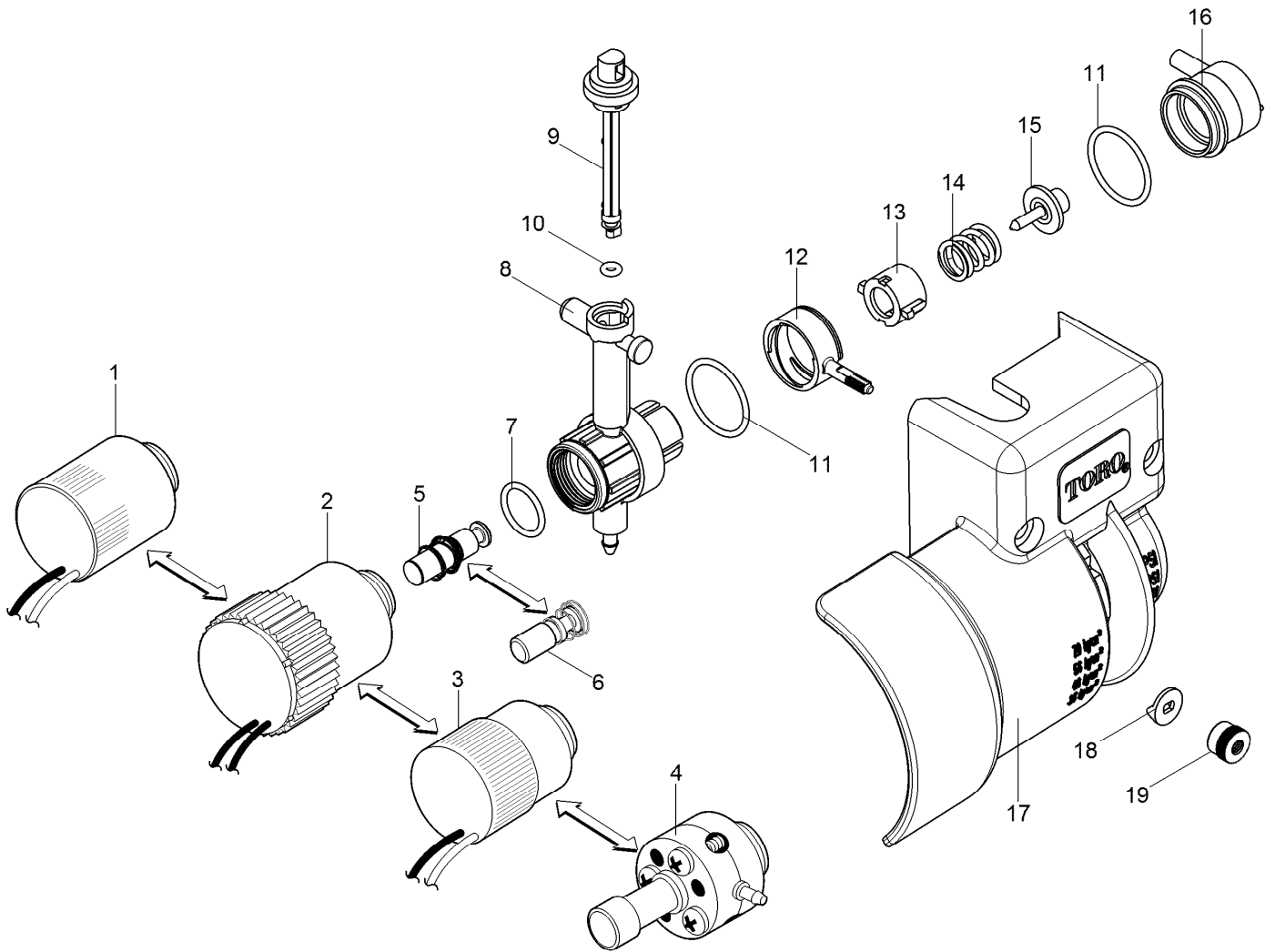
## Pilot Valve, Select Pressure, 2004-03/2019



# Pilot Valve, Select Pressure, 2004-03/2019 (continued)

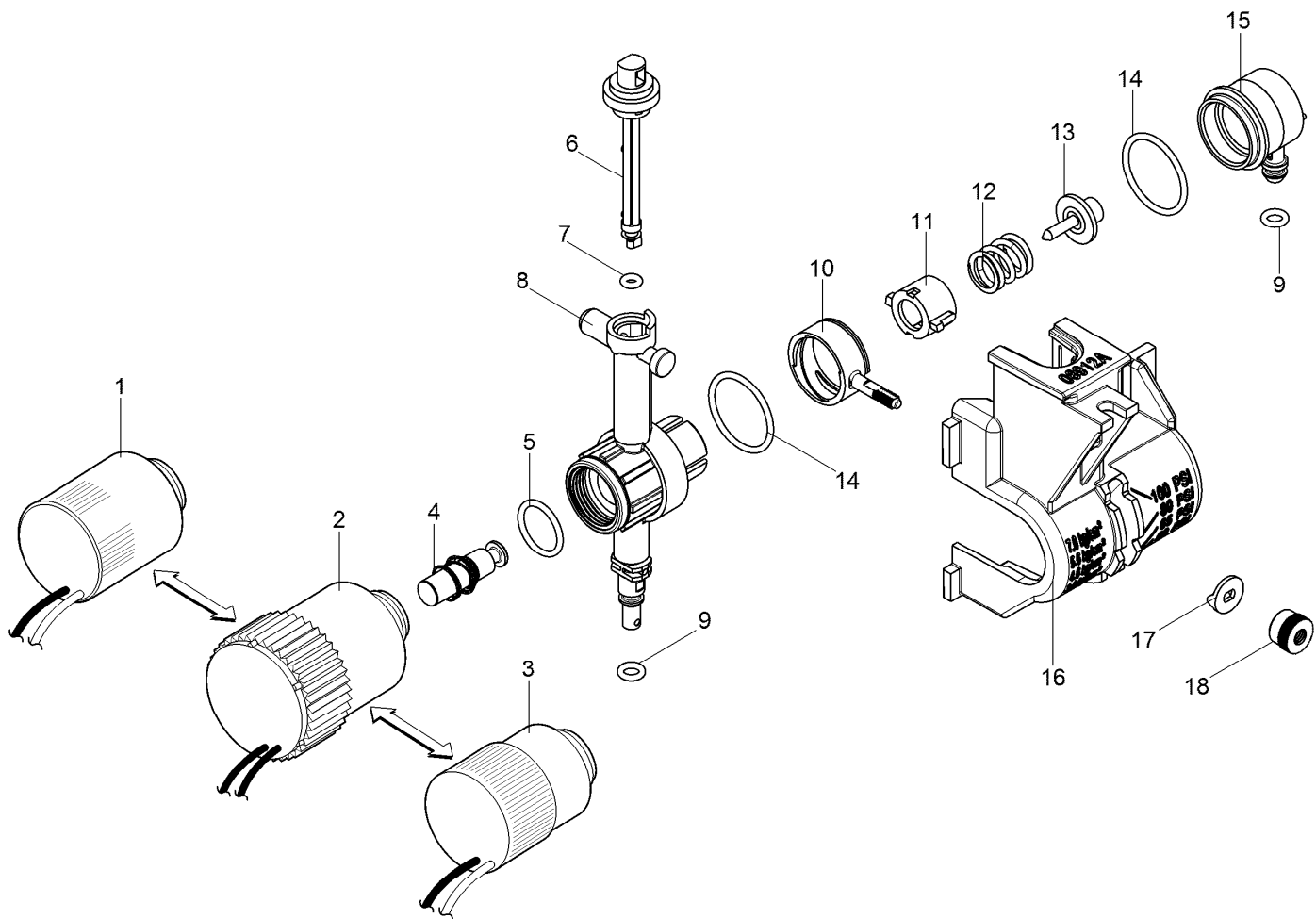
<i>Ref.</i>	<i>Part Number</i>	<i>Qty.</i>	<i>Description</i>	<i>Ref.</i>	<i>Part Number</i>	<i>Qty.</i>	<i>Description</i>
1	102-2709	1	Solenoid Assy., 24Vdc, Latching (Red W/ White Stripe And Black)	118-6168	1	1	Pilot Valve Assy., Sealed, Selectable Pressure W/ Standard Watt And Surge Solenoid (Includes Items 3, 5, 7, 8 [118-6608], 9 [102-4831] And 10-18. ■●
2	102-3443	1	Solenoid-Low Wattage, W/Surge Protection (Black Wires)	118-6736	1	1	Pilot Valve Assy., Sealed, Selectable Pressure W/ Normally Closed Actuator (Includes Items 4, 6-8 [118-6608], 9 [102-4831] And 10-18. ■●
2	102-3444	1	Solenoid-Low Wattage, W/Surge Protection, Nickel Plated (Red Wires)	118-6166	1	1	Pilot Valve Assy., Sealed, Selectable Pressure W/ Low Watt/High Surge Nickel Plated Solenoid (Includes Items 2 [102-3444], 5, 7, 8 [118-6608], 9 [102-4831] And 10-18. ■●
2	102-4979	1	Solenoid-Standard Wattage W/Surge Protection (Yellow Wires)	118-6165	1	1	Pilot Valve Assy., Sealed, Selectable Pressure W/ Standard Watt/High Surge Solenoid (Includes Items 2 [102-4979], 5, 7, 8 [118-6608], 9 [102-4831] And 10-18. ■●
3	118-0248	1	Solenoid, Standard Wattage Series (Red & Black Wires)	118-6164	1	1	Pilot Valve Assy., Sealed, Selectable Pressure W/ DC Latching Solenoid (Includes Items 1, 5, 7, 8 [118-6608], 9 [102-4831] And 10-18. ■●
4	89-6005	1	Adapter-Pilot Valve, NC	118-6167	1	1	Pilot Valve Assy., Sealed, Selectable Pressure Less Solenoid (Includes Items 5, 7, 8 [118-6608], 9 [102-4831] And 10-18.) ■●
5	102-7690	1	Plunger Assy., EI	118-6163	1	1	Pilot Valve Assy., Sealed, Selectable Pressure, Less Solenoid, Auto-On-Off (Includes Items 5, 7, 8 [118-6737], 9 [102-0343] And 10-18. ■●
6	89-6003	1	Plunger ASM, NC				
7	360-0220	1	O-Ring (0.070 X 0.551 X 0.691) (As568-015)				
8	102-4747	1	Body Assy., Pilot Valve, Beige				
8	102-7723	1	Body Assy., Pilot Valve, Blue				
9	102-0343	1	Selector Cam, Black (Includes Item 10)				
9	102-4831	1	Selector Cam, Red (Includes Item 10)				
10	1-2035	1	O-Ring, EI, Pr And Cr (0.070" X 0.114" X 0.254") (As568-006)				
11	102-2237	1	Adjuster, PSI				
12	102-2236	1	Traveling Nut				
13	102-2235	1	Spring				
14	102-2469	1	Piston				
15	102-2473	1	Diaphragm Assy.				
16	118-0669	1	Housing, Pilot Valve				
17	102-2606	1	Adjustment Locator				
18	363-4441	1	Nut, Adjuster				
	118-3747	1	Pilot Valve Assy., Sealed, Selectable Pressure W/ Low Watt/High Surge Solenoid (Includes Items 2[102-3443], 5, 7, 8 [118-6608], 9 [102-4831] And 10-18. ■●				

# Pilot Valve, FLEX, Select Pressure, 04/2019-Present



# Pilot Valve, FLEX, Select Pressure, 04/2019-Present (continued)

Ref.	Part Number	Qty.	Description	Ref.	Part Number	Qty.	Description
1	102-2709	1	Solenoid Assy., 24Vdc, Latching (Red W/ White Stripe And Black)		118-6168	1	Pilot Valve Assy., Sealed, Selectable Pressure W/ Standard Watt & Surge Solenoid (Includes Items 3, 5, 7, 8 [118-6608], 9 [102-4831] And 10-19. ■●
2	102-3443	1	Solenoid-Low Wattage, W/Surge Protection (Black Wires)		118-6736	1	Pilot Valve Assy., Sealed, Selectable Pressure W/ Normally Closed Actuator (Includes Items 4, 6-8 [118-6608], 9 [102-4831] And 10-19. ■●
2	102-3444	1	Solenoid-Low Wattage, W/Surge Protection, Nickel Plated (Red Wires)		118-6166	1	Pilot Valve Assy., Sealed, Selectable Pressure W/ Low Watt/High Surge, Nickel Plated Solenoid (Includes Items 2 [102-3444], 5, 7, 8 [118-6608], 9 [102-4831] And 10-19. ■●
2	102-4979	1	Solenoid-Standard Wattage W/Surge Protection (Yellow Wires)		118-6165	1	Pilot Valve Assy., Sealed, Selectable Pressure W/ Standard Watt/High Surge Solenoid, (Includes Items 2 [102-4979], 5, 7, 8 [118-6608], 9 [102-4831] And 10-19. ■●
3	118-0248	1	Solenoid, Standard Wattage Series (Red & Black Wires)		118-6164	1	Pilot Valve Assy., Sealed, Selectable Pressure W/ DC Latching Solenoid (Includes Items 1, 5, 7, 8 [118-6608], 9 [102-4831] And 10-19. ■●
4	89-6005	1	Adapter-Pilot Valve, NC		118-6167	1	Pilot Valve Assy., Sealed, Selectable Pressure Less Solenoid (Includes Items 5, 7, 8 [118-6608], 9 [102-4831] And 10-19.) ■●
5	102-7690	1	Plunger Assy., EI		118-6163	1	Pilot Valve Assy., Sealed, Selectable Pressure Less Solenoid, Auto-On-Off (Includes Items 5, 7, 8 [118-6737], 9 [102-0343] And 10-19. ■●
6	89-6003	1	Plunger ASM, NC				
7	360-0220	1	O-Ring (0.070 X 0.551 X 0.691) (As568-015)				
8	118-6608	1	Body Assy., Pilot Valve, Beige				
8	118-6737	1	Body Assy., Pilot Valve, Blue, Auto-On-Off				
9	102-0343	1	Selector Cam, Black (Includes Item 10)				
9	102-4831		Selector Cam, Red (Includes Item 10)				
10	1-2035	1	O-Ring, EI, Pr And Cr (0.070" X 0.114" X 0.254") (As568-006)				
11	102-5978	2	O-Ring, Nozzle Housing				
12	118-3746	1	Adjuster, PSI				
13	118-6317	1	Traveling Nut				
14	102-2235	1	Spring				
15	102-2469	1	Piston				
16	118-3743	1	Diaphragm Assy.				
17	118-7180	1	Housing, Pilot Valve				
18	102-2606	1	Adjustment Locator				
19	363-4441	1	Nut, Adjuster				
	118-3747	1	Pilot Valve Assy., Sealed, Selectable Pressure W/ Low Watt/High Surge Solenoid (Includes Items 2 [102-3443], 5, 7, 8 [118-6608], 9 [102-4831] And 10-19. ■●				



## Pilot Valve, INFINITY, 07/2019-Present

Ref.	Part Number	Qty.	Description
1	102-2709	1	Solenoid Assy., 24Vdc, Latching (Red W/ White Stripe And Black)
2	102-3443	1	Solenoid-Low Wattage, W/Surge Protection (Black Wires)
2	102-3444	1	Solenoid-Low Wattage, W/Surge Protection, Nickel Plated (Red Wires)
2	102-4979	1	Solenoid-Standard Wattage W/Surge Protection (Yellow Wires)
3	118-0248	1	Solenoid, Standard Wattage Series (Red & Black Wires)
4	102-7690	1	Plunger Assy., EI
5	360-0220	1	O-Ring (0.070 X 0.551 X 0.691) (As568-015)
6	102-4831	1	Selector Cam, Red (Includes Item 7)
7	1-2035	1	O-Ring, EI, Pr And Cr (0.070

Ref.	Part Number	Qty.	Description
8	118-6609	1	Body Assy., Pilot Valve
9	2-9654	2	O-Ring
10	118-3746	1	Adjuster, PSI
11	118-6317	1	Traveling Nut
12	102-2235	1	Spring
13	102-2469	1	Piston
14	102-5978	2	O-Ring, Nozzle Housing
15	118-4502	1	Diaphragm Assy.
16	118-7181	1	Housing, Pilot Valve, Infinity
17	102-2606	1	Adjustment Locator
18	363-4441	1	Nut, Adjuster
	118-7184	1	Pilot Valve, W/ Spike-Guard Solenoid ■●
	118-6520	1	Pilot Valve W/O Solenoid ■●
	118-6521	1	Pilot Valve W/ Nickel Plated Spike-Guard Solenoid ■●
	118-6522	1	Pilot Valve W/ DC Latching Solenoid ■●
	118-6523	1	Pilot Valve W/ Standard Solenoid ■●

● SERVICE ITEMS

■ Not illustrated



**Notes:**

**Notes:**

**Notes:**



**Count on it.**