



Operator Presence Kit for Greensmaster® Flex™ and Fixed-Head Mowers

Model No. 112-9282

Form No. 3426-221 Rev A

Installation Instructions

Mounting the Bail

1. Remove the 2 bolts securing each end of the console panel to the handle bar (Figure 1).

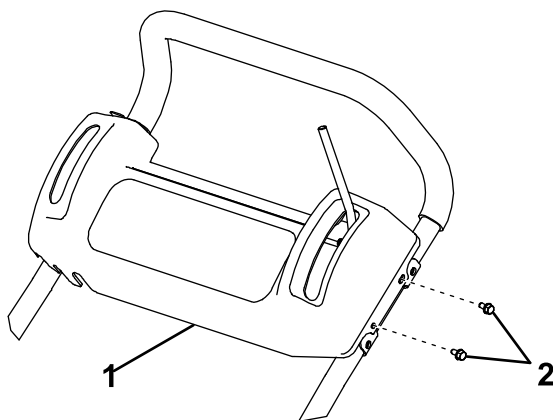


Figure 1

g267643

1. Console panel
2. Bolts

2. Slide the console up over the control levers to gain access to the left control bracket.
3. Remove and discard the bolts and nuts securing the top of the left and right brake brackets to the handle bar (Figure 2).

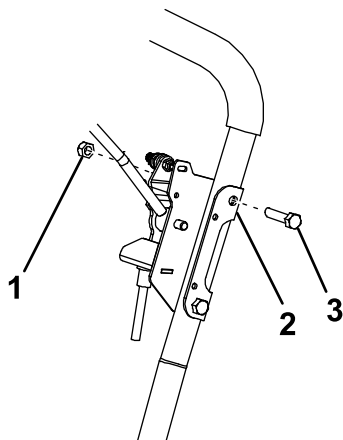


Figure 2

g267644

1. Nut
2. Brake bracket
3. Bolt

4. Mount the left end of the control bail to the control bracket and handle bar with a washer-head bolt, bushing, torsion spring, spacer, and flange

nut (Figure 3). Ensure that the bushing is positioned between the control bracket and bail and oriented as shown in Figure 3. Position the curved end of the torsion spring leg in the bail bracket and the other spring leg on the brake lever pivot (Figure 4).

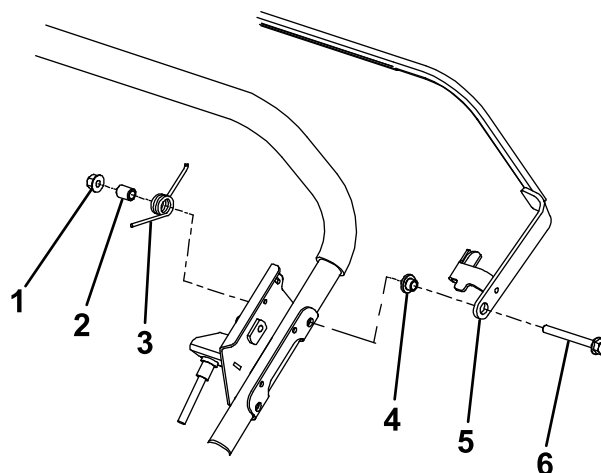


Figure 3

g267645

1. Flange nut
2. Spacer
3. Torsion spring
4. Bushing
5. Control bail
6. Washer-head bolt

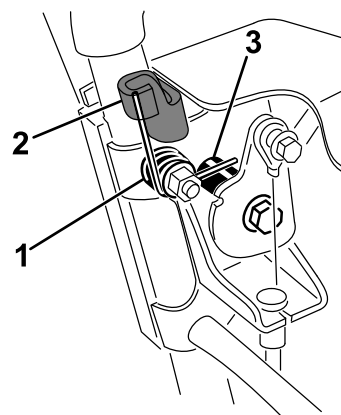


Figure 4

g267646

1. Torsion spring
 2. Bail bracket
 3. Brake lever pivot
5. Mount the right end of the control bail to the control bracket and handle bar with a



washer-head bolt, bushing, and flange nut (Figure 5). Ensure that the bushing is positioned between the control bracket and bail and oriented as shown in Figure 5.

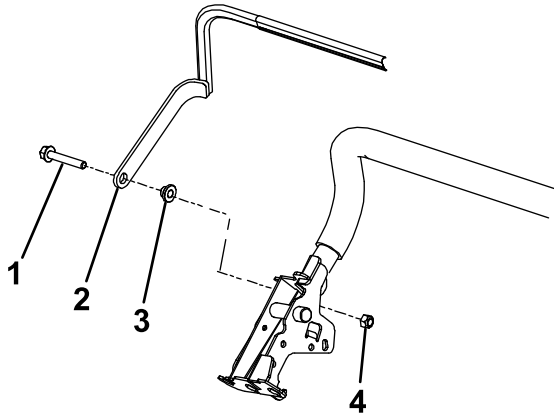


Figure 5

g267647

- | | |
|---------------------|---------------|
| 1. Washer-head bolt | 3. Bushing |
| 2. Control bail | 4. Flange nut |

Mounting the Switch

Loosely mount the switch to the control bracket with 2 bolts and nuts (Figure 6). Do not tighten the nuts at this time. Align the switch plunger with the bail tab.

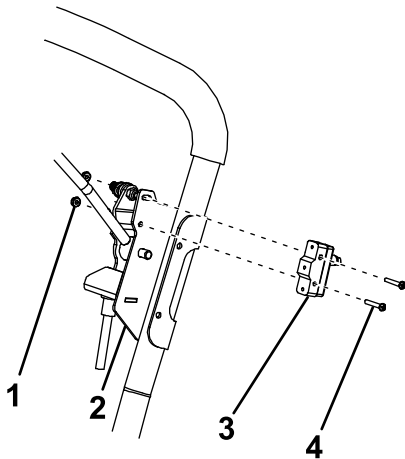


Figure 6

g267648

- | | |
|--------------------|-----------|
| 1. Nut | 3. Switch |
| 2. Control bracket | 4. Bolt |

- Secure the wire harness to the brake cable with 2 cable ties.
- On the back of the engine, unplug and discard the loop back connector from the connector on the interlock module.
- Plug the wire harness connector into the module connector.
- Secure the wire harness to the clutch interlock harness with a cable tie.

Adjusting the Switch

- Adjust the switch so the switch plunger is depressed 2 mm (0.08 inches) when the bail is engaged. When the bail is disengaged, the switch plunger should be fully extended.
- Tighten the mounting bolts.
- Secure each end of the console panel to the handle bar with the 2 bolts previously removed (Figure 1).
- Check the switch operation as follows:
 - Place the machine on the kickstand and move the traction lever to the neutral position.
 - With the operator presence bail released and the traction lever in neutral, start the engine. The engine should start.
 - With the engine running and the operator presence bail released, engage the traction lever. The engine should kill.
 - With the engine off, the operator presence bail released, and the traction lever engaged, try to start the engine. The engine should not start.
 - With the operator presence bail released and the traction lever in neutral, start the engine. Squeeze the operator presence bail and engage the traction drive. The traction should engage and the engine should continue running.

Connecting the Wire Harness

- Secure the spade connectors from the wire harness to the screw on the switch labeled Common and Normally Open.