



2in or 6in L-Track Kit Workman® GTX Utility Vehicle

Model No. 07158

Model No. 07159

Installation Instructions

Installation

Loose Parts

Use the chart below to verify that all parts have been shipped.

Description	Qty.	Use
No parts required	—	Prepare the machine.
15.2 cm (6 inches) L-Track bracket	4	Install a 15.2 cm (6 inches) L-Track bracket.
Ring assembly	4	
Screw (fine thread)	8	
Screw (coarse thread)	8	
5 cm (2 inches) L-Track bracket	4	Install a 5 cm (2 inches) L-Track bracket (for a plastic cargo bed).
Ring assembly	4	
Screw (coarse thread)	8	
5 cm (2 inches) L-Track bracket	4	Install a 5 cm (2 inches) L-Track bracket (for a 1.8 M (6 ft) flat bed with Tube Sides Kit).
Ring assembly	4	
Screw (fine thread)	8	
Locknut (1/4 inch)	8	

Preparing the Machine

1. Park the machine on a level surface.
2. Engage the parking brake.
3. Shut off the engine and remove the key.

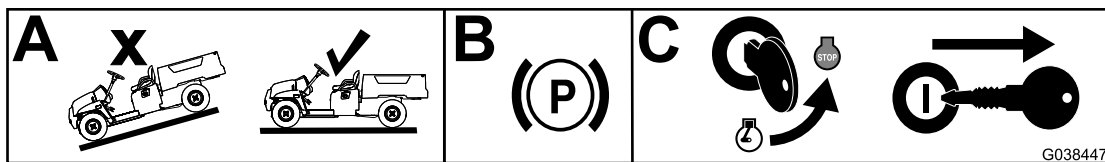


Figure 1

g038447



Installing a 15.2 cm (6 inches) L-Track Bracket

1. Attach the bracket in the locations shown in [Figure 2](#) using 2 screws ([Figure 3](#)).

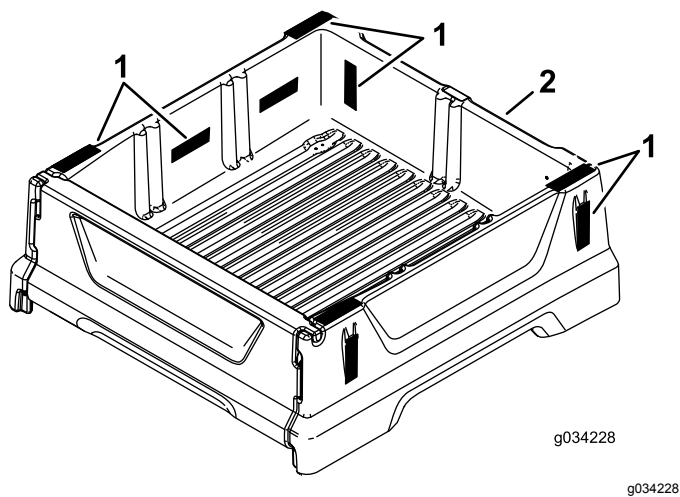


Figure 2

1. Possible bracket locations
2. Front of the bed

2. Install and use the ring assembly as shown in [Figure 4](#).

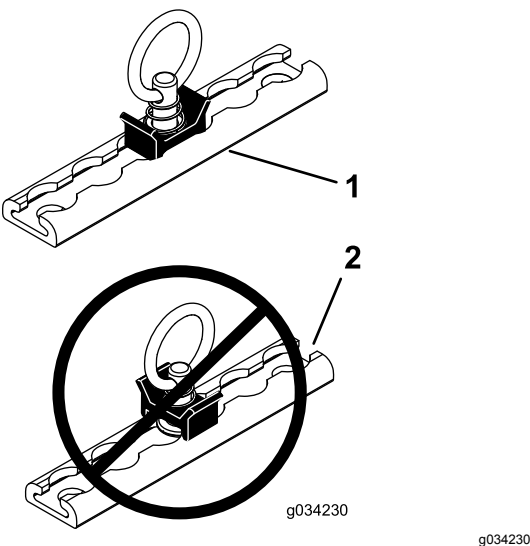


Figure 4

15.2 cm (6 inches) L-Track bracket shown

1. Correct position
2. Incorrect position

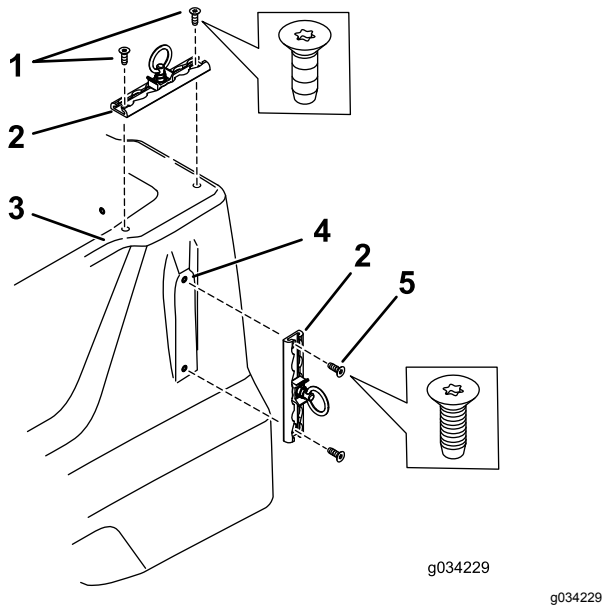


Figure 3

1. Coarse-threaded screws—2.03 to 2.50 N·m (18 to 22 in-lb)
2. Bracket
3. Top of the bed
4. Side of the bed
5. Fine-threaded screws—4.52 to 5.10 N·m (40 to 45 in-lb)

Installing a 5 cm (2 inches) L-Track Bracket

2. Install and use the ring assembly as shown in [Figure 4](#).

For a Plastic Cargo Bed

1. Attach the bracket in the locations shown in [Figure 5](#) using 2 screws ([Figure 6](#)).

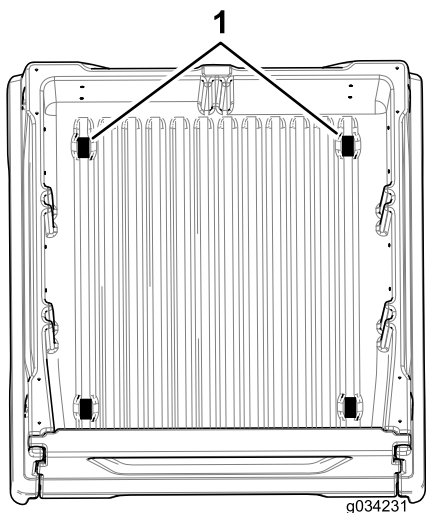


Figure 5

g034231

1. Possible bracket locations
-

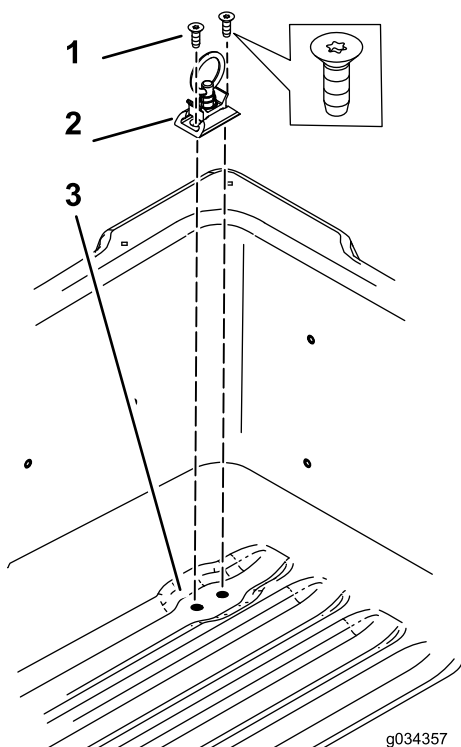


Figure 6

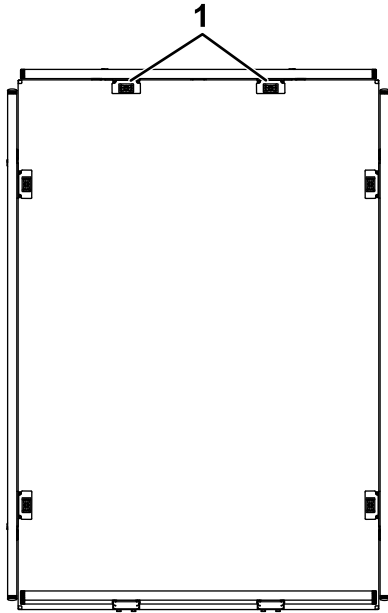
g034357

1. Coarse-threaded screws—2.03 to 2.50 N·m (18 to 22 in-lb)
 2. Bracket
 3. Bed
-

Installing a 5 cm (2 inches) L-Track Bracket

For a 1.8 M (6 ft) Flat Bed with Tube Sides Kit

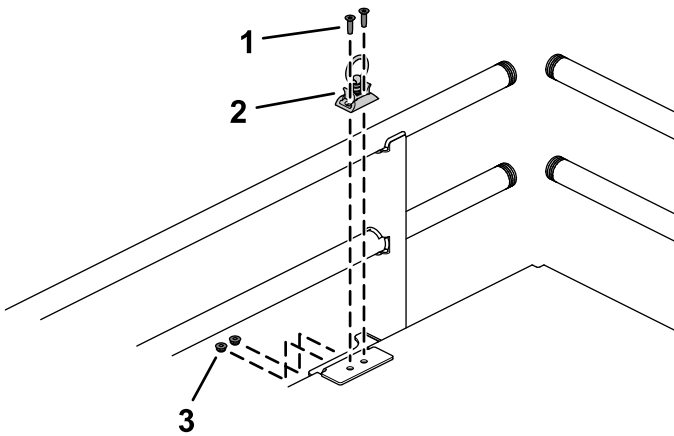
1. Attach the bracket in the locations shown in [Figure 7](#) using 2 screws ([Figure 8](#)).



g268405

Figure 7

1. Possible bracket locations



g268406

Figure 8

1. Fine-threaded screws—5.2 to 6.8 N·m (46 to 60 in-lb)
2. Bracket
3. Locknut (1/4 inch)

2. Install and use the ring assembly using 2 fine-threaded screws and locknuts (1/4 inch) as shown in [Figure 4](#).