



**Wheel Horse<sup>®</sup>  
Lawn And Garden Tractor**

**38" Side Discharge  
Cutting Unit**

**Model No. 78216-990001 & Up**

---

*PROTOTYPE*

**Parts Catalog**

## ORDERING REPLACEMENT PARTS

To order replacement parts, please supply: the part number, the quantity, and the description of each part desired.

## Contents

Description	Page	Description	Page
Blade, Spindle, Belt And Idler Pulley . . . . .	1	Gage Wheels, Deck And Side Discharge Deflector . . . . .	3
Gage Wheels, Deck And Side Discharge Deflector . . . . .	2	<b>Note:</b>	

## Part Description Abbreviations

Part descriptions in this catalog may include the following abbreviations.

Abbreviation	Meaning	Abbreviation	Meaning
AR . . . . .	as required	HWHTF . . . . .	hex washer head thread forming
ASM . . . . .	assembly	INC . . . . .	incorporated
CARR . . . . .	carriage	LH . . . . .	left hand
DEG . . . . .	degrees	PH . . . . .	pan head
FH . . . . .	flat head	PPH . . . . .	Phillips pan head
GA . . . . .	gauge	PTO . . . . .	power take off
HF . . . . .	hex flange	RH . . . . .	right hand
HFW . . . . .	hex flange washer	SFH . . . . .	slotted fillister head
HH . . . . .	hex head	SH . . . . .	square head
HHF . . . . .	hex head flange	SHWH . . . . .	slotted hex washer head
HHST . . . . .	hex head self tapping	SPH . . . . .	slotted pan head
HJ . . . . .	hex jam	STD . . . . .	standard
HOC . . . . .	height-of-cut	TAP . . . . .	self tapping
HS . . . . .	hex socket	TH . . . . .	truss head
HSBH . . . . .	hex socket button head	TTH . . . . .	Torx truss head
HSFH . . . . .	hex socket flat head	WH . . . . .	wing head
HSH . . . . .	hex socket head		
HWH . . . . .	hex washer head		

## Important Format Explanations

This catalog uses special formats to convey information in illustrations and parts lists. Specifically, one format is used in conjunction with service assemblies and another with quantities associated with reference numbers.

### Service Assemblies

Parts within service assemblies have reference numbers in the form *X:Y*. *X* is the reference number of the service assembly and *Y* is a sequential number unique to each part within the service assembly.

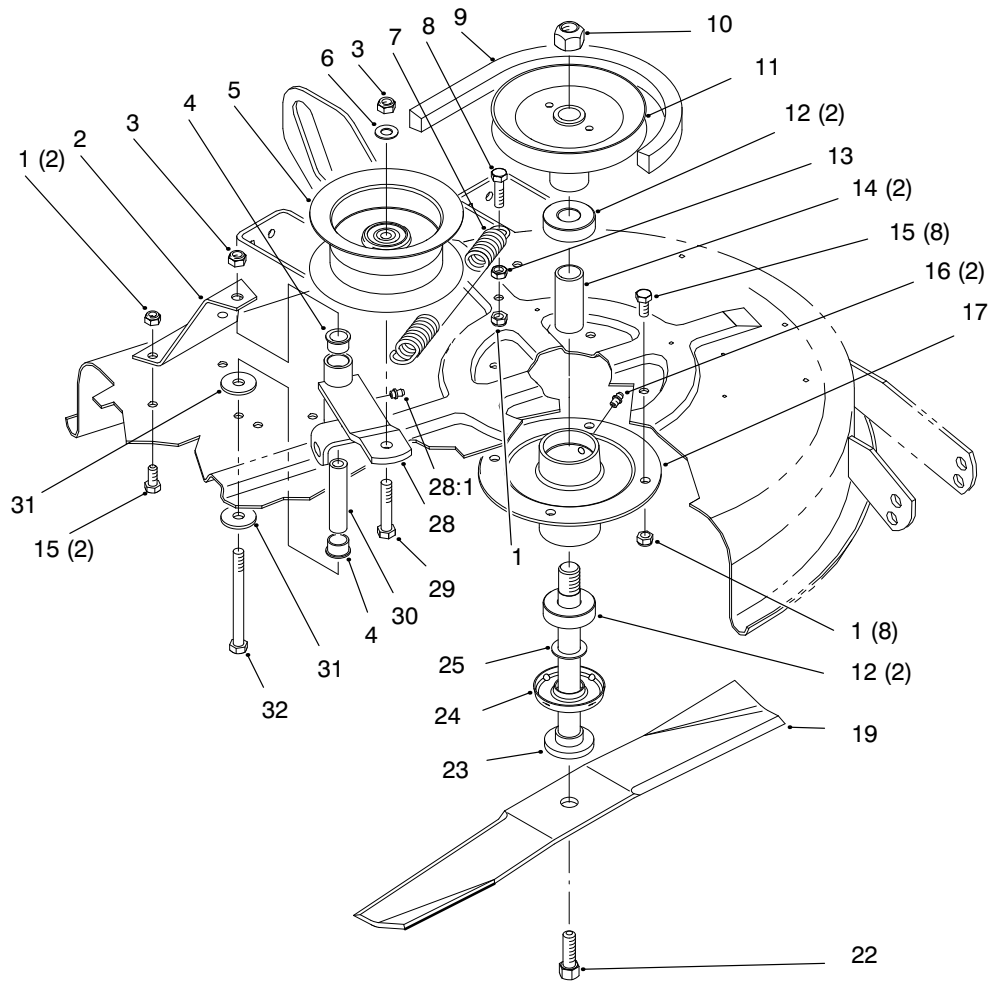
For example, a wheel assembly might be identified by reference number 6, the tire by 6:1, the valve by 6:2, and the wheel by 6:3. When you order the assembly identified by reference number 6, you receive all parts identified by reference numbers 6:1, 6:2, and 6:3. However, you may also order any part individually.

Reference numbers of this type appear in part lists and as callouts in illustrations.

### Reference Numbers with Quantities

Illustrations may have a quantity in parentheses next to a reference number, in the form *X (Y)*. *X* is the reference number. *Y* in parentheses is the quantity of the part identified by the reference number.

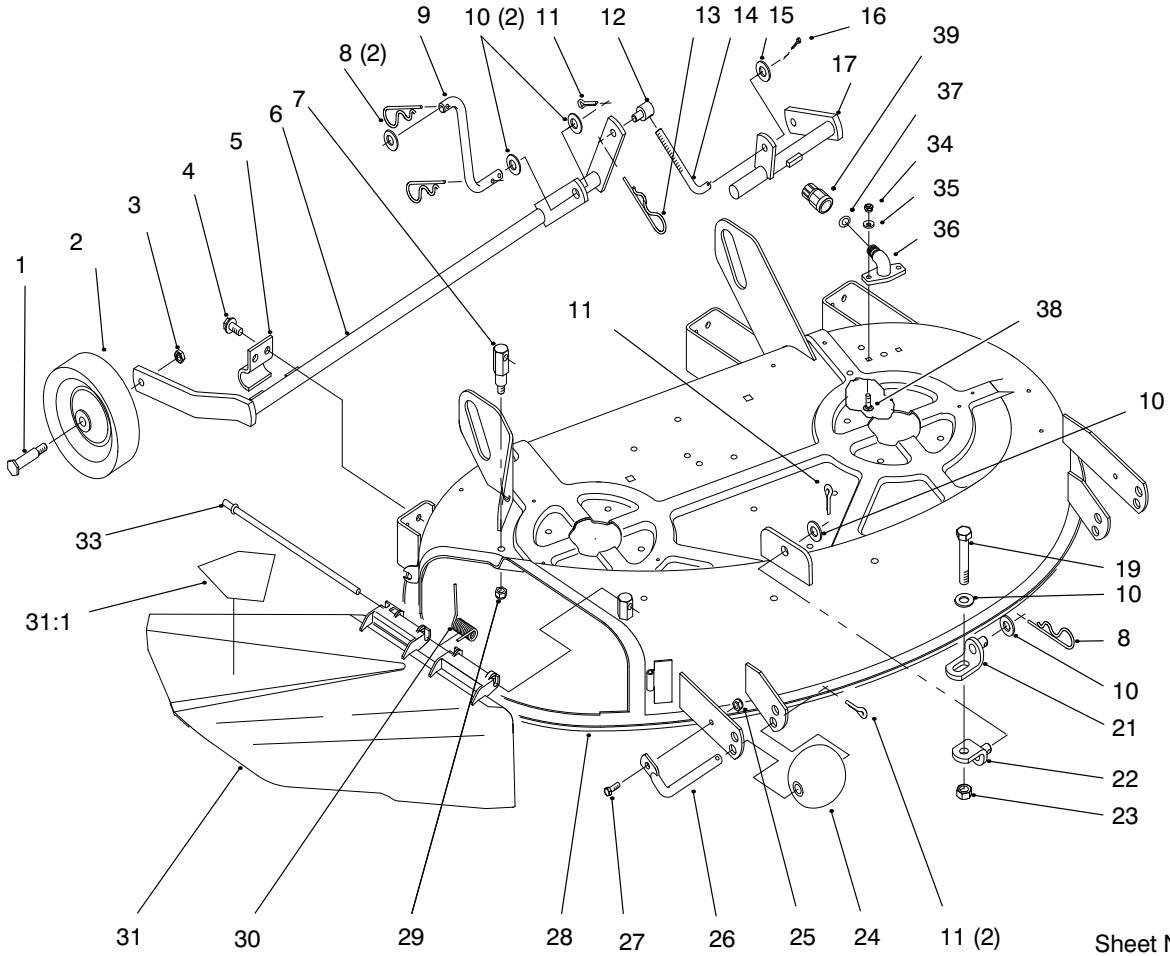
For example, the illustration callout 4 (2) indicates that two parts are used in that instance.



Sheet No.: 2

## Blade, Spindle, Belt And Idler Pulley

Ref. No.	Part No.	Description	No. Used	Ref. No.	Part No.	Description	No. Used
1	3296-29	Nut-Lock	11	16	302-16	Fitting-Grease	2
2	78-8091-03	Brace	1	17	79-1050-03	Housing-Spindle	2
3	3296-39	Nut-Lock	2	19	57-4700	Blade	2
4	109859	Bushing	2	21	112843	Washer	2
5	92-7082	Pulley-Idler	1	22	26-0671	Bolt-Blade	2
6	3256-24	Washer-Flat	1	23	80-4351	Shaft-Spindle	2
7	78-6210	Spring-Extension	1	24	80-4370	Shield-Bearing	2
8	322-6	Screw-HH	1	25	80-4390	Spacer-Hardened	2
9	92-7066	"V" Belt	1	28	94-9795	Arm	1
10	3219-7	Nut-Hex	2	28:1	302-5	Fitting-Grease	1
11	92-7081	Pulley	2	29	323-10	Screw-HH	1
12	79-1090	Bearing-Ball	4	30	109950	Spacer	1
13	3217-6	Nut-Hex	1	31	2844	Washer-Flat	2
14	79-2780	Spacer	2	32	323-16	Screw-HH	1
15	322-3	Screw-HH	10				

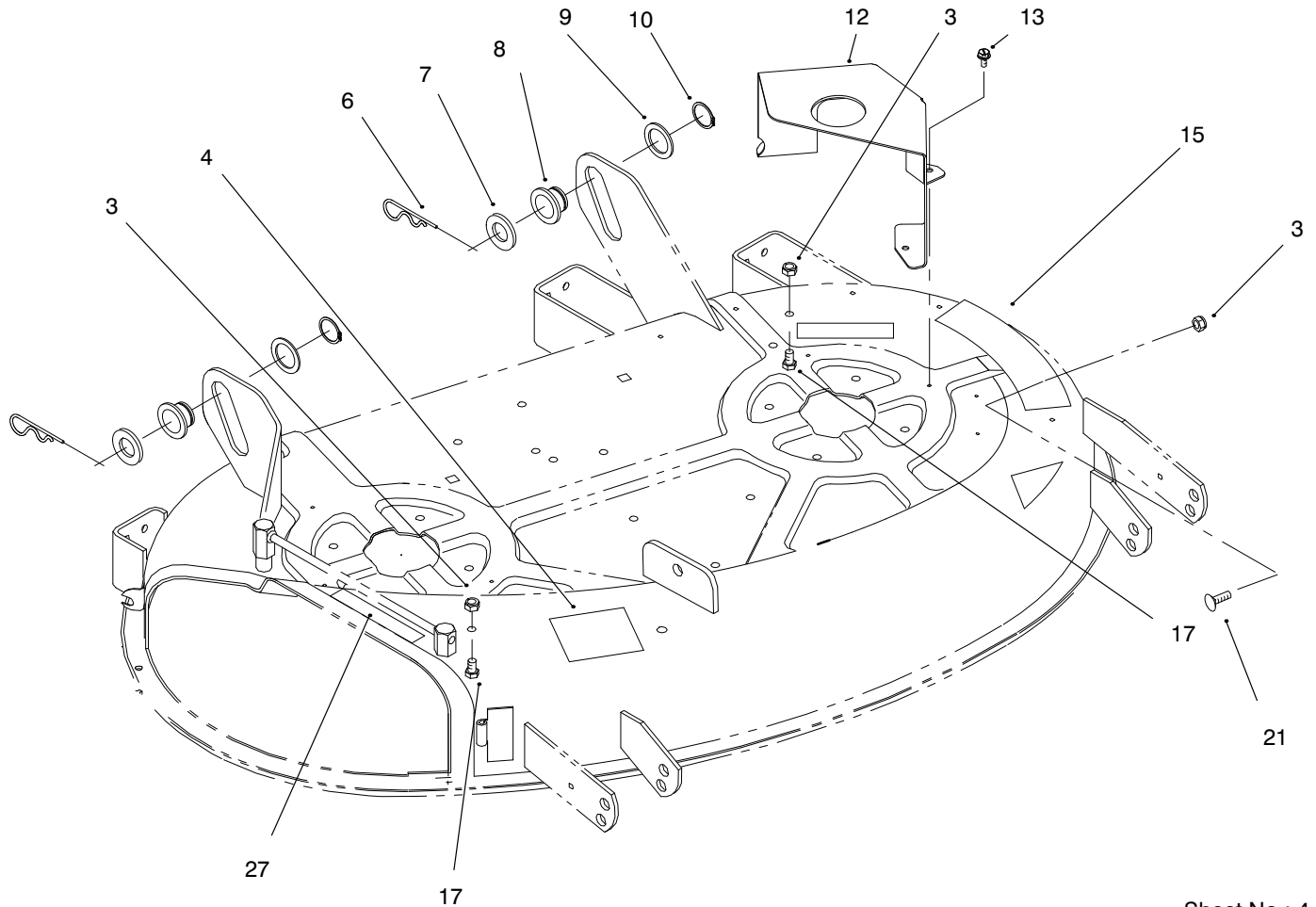


Sheet No.: 3

## Gage Wheels, Deck And Side Discharge Deflector

Ref. No.	Part No.	Description	No. Used
1	5188	Screw-HSH	2
2	110506	Wheel-Gage	2
3	32146-2	Nut-Lock	2
4	9267154	Screw	6
5	78-6400-03	Clamp	3
6	78-8011-03	Shaft	1
7	92-7063	Pivot Post-Rear	1
8	9335064	Hairpin-Cotter	3
9	78-8071	Link-Rear	1
10	3256-26	Washer-Flat	6
11	3272-21	Pin-Cotter	4
12	110656	Trunnion	1
13	9335044	Hairpin	1
14	121010	Rod-Lift	1
15	3256-24	Washer-Flat	1
16	3272-6	Pin-Cotter	1
17	92-7073-03	Shaft	1
19	325-13	Screw-HH	1
21	86-9240	Bracket	1

Ref. No.	Part No.	Description	No. Used
22	86-9250	Bracket	1
23	3218-5	Nut-Jam	1
24	29-4820	Roller	2
25	3296-42	Nut-Lock	2
26	118960-3	Shaft-Roller	2
27	321-4	Screw-HH	2
28	92-6834	Asm-Deck	1
29	3296-39	Nut-Lock	1
30	57-6950	Spring-Torsion Deflector	1
31	93-0317	Deflector Asm 38"	1
31:1	93-1122	Decal-Danger	1
33	57-4380	Rod-Hinge Deflector	1
34	3296-16	Nut-Lock	2
35	3256-1	Washer-Flat	2
36	95-2747	Fitting-Wash out	1
37	46-6290	O-Ring	1
38	3229-1	Bolt-Carriage	2
39	95-3270	Connector-Hose	1



Sheet No.: 4

## Gage Wheels, Deck And Side Discharge Deflector

Ref. No.	Part No.	Description	No. Used
3	3296-29	Nut-Lock	3
4	117137	Decal-Routing	1
6	9335074	Cotter-Hairpin	2
7	3256-28	Washer-Flat	2
8	78-7340	Roller-Lift	2
9	9202394	Washer	2
10	32151-29	Ring-Ext Snap	2

Ref. No.	Part No.	Description	No. Used
12	78-6840-03	Cover-Belt	2
13	32104-76	Screw-Self TAP	6
15	93-7110	Decal-Dange	1
17	322-1	Screw-HH	2
21	3230-18	Screw-HH	1
27	92-7109	Decal-Danger	1

PROTOTYPE

# TORO PART NUMBER INDEX

Part No.	Description	Pg. Ref. No. No.	Qty.	Part No.	Description	Pg. Ref. No. No.	Qty.
2844	Washer-Flat	1 31	2	92-7081	Pulley	1 11	2
5188	Screw-Hex. Soc. Hd.	2 1	2	92-7082	Pulley-Idler	1 5	1
109859	Bushing	1 4	2	92-7109	Decal-Danger	3 27	1
109950	Spacer	1 30	1	92-7110	Decal-Danger	3 15	1
110506	Wheel-Gage	2 2	2	93-0317	Deflector Asm 38"	2 31	1
110656	Trunnion	2 12	1	93-1122	Decal-Danger	2 32	1
112843	Washer (Model No. 78216)	1 21	2	93-7110	Decal-Danger	3 15	1
117137	Decal-Routing	3 4	1	94-9795	Arm	1 28	1
118960-03	Shaft-Roller	2 26	2	95-2747	Fitting-Washout	2 36	1
121010	Rod-Lift	2 14	1	95-3270	Connector-Hose	2 39	1
9202394	Washer	3 9	2	302-16	Fitting-Grease	1 16	2
9267154	Screw	2 4	6	302-5	Fitting-Grease	1 27	1
9335044	Hairpin	2 13	1	321-4	Screw-Hex. Hd.	2 27	2
9335064	Hairpin-Cotter	2 8	3	321-15	Screw-Hex. Hd.	3 26	2
9335074	Cotter-Hairpin	3 6	2	322-1	Screw-Hex. Hd.	3 17	2
26-0671	Bolt-Blade	1 22	2	322-3	Screw-Hex. Hd.	1 15	10
29-4820	Roller	2 24	2	322-6	Screw-Hex. Hd.	1 8	1
46-6290	O-Ring	2 37	1	323-10	Screw-Hex. Hd.	1 29	1
57-4380	Rod-Hinge Deflector	2 33	1	323-16	Screw-Hex. Hd.	1 32	1
57-4700	Blade (Model No. 78216)	1 19	2	325-13	Screw-Hex. Hd.	2 19	1
57-6950	Spring-Torsion Deflector	2 30	1	3217-6	Nut-Hex	1 13	1
78-6210	Spring-Extension	1 7	1	3218-5	Nut-Jam	2 23	1
78-6400-03	Clamp	2 5	3	3219-7	Nut-Hex	1 10	2
78-6840-03	Cover-Belt	3 12	2	3229-1	Bolt-Carriage	2 38	2
78-7340	Roller-Lift	3 8	2	3230-18	Screw-Hex. Hd.	3 21	1
78-8011-03	Shaft	2 6	1	3256-24	Washer-Flat	1 6	1
78-8071	Link-Rear	2 9	1	3256-24	Washer-Flat	2 15	1
78-8091-03	Brace	1 2	1	3256-26	Washer-Flat	2 10	5
79-1050-03	Housing-Spindle	1 17	2	3256-28	Washer-Flat	3 7	2
79-1090	Bearing-Ball	1 12	4	3272-6	Pin-Cotter	2 16	1
79-2780	Spacer	1 14	2	3272-21	Pin-Cotter	2 11	4
80-4351	Shaft-Spindle	1 23	2	3292-16	Nut-Lock	2 34	2
80-4370	Shield-Bearing	1 24	2	3296-29	Nut-Lock	1 1	11
80-4390	Spacer-Hardened	1 25	2	3296-29	Nut-Lock	3 3	3
86-9240	Bracket	2 21	1	3296-39	Nut-Lock	1 3	2
86-9250	Bracket	2 22	1	3296-39	Nut-Lock	2 29	1
92-6834-01	Asm-Decal	2 28	1	3296-42	Nut-Lock	2 25	2
92-7063	Pivot Post-Rear	2 7	1	32104-76	Screw-Self TAP	3 13	6
92-7066	V Belt	1 9	1	32146-2	Nut-Lock	2 3	2
92-7073-03	Shaft	2 17	1	32151-29	Ring-Ext Snap	3 10	2

PROTOTYPE



