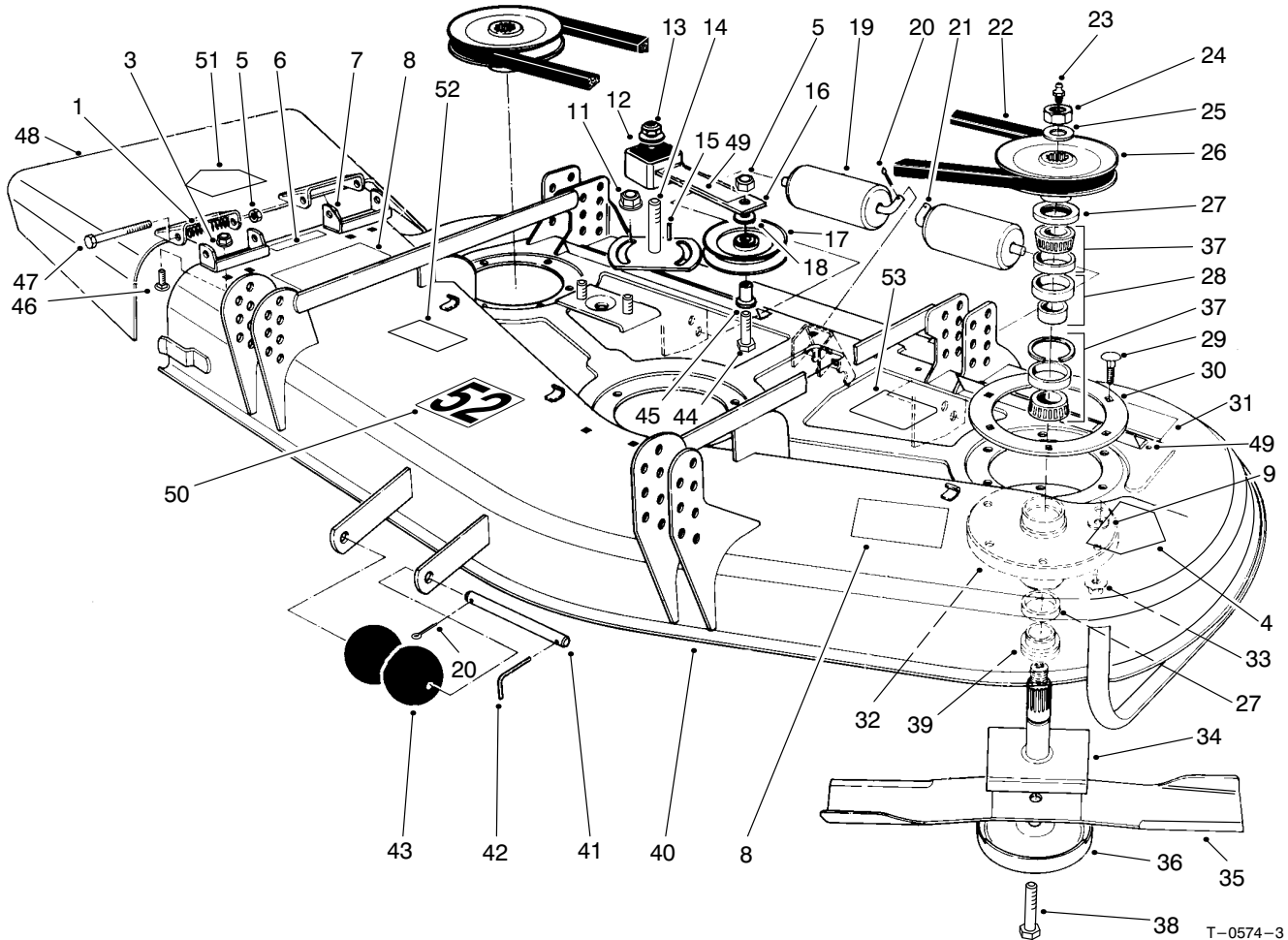




MODEL NO. 30555-90001 & UP
MODEL NO. 30555TE-90001 & UP

PARTS
CATALOG

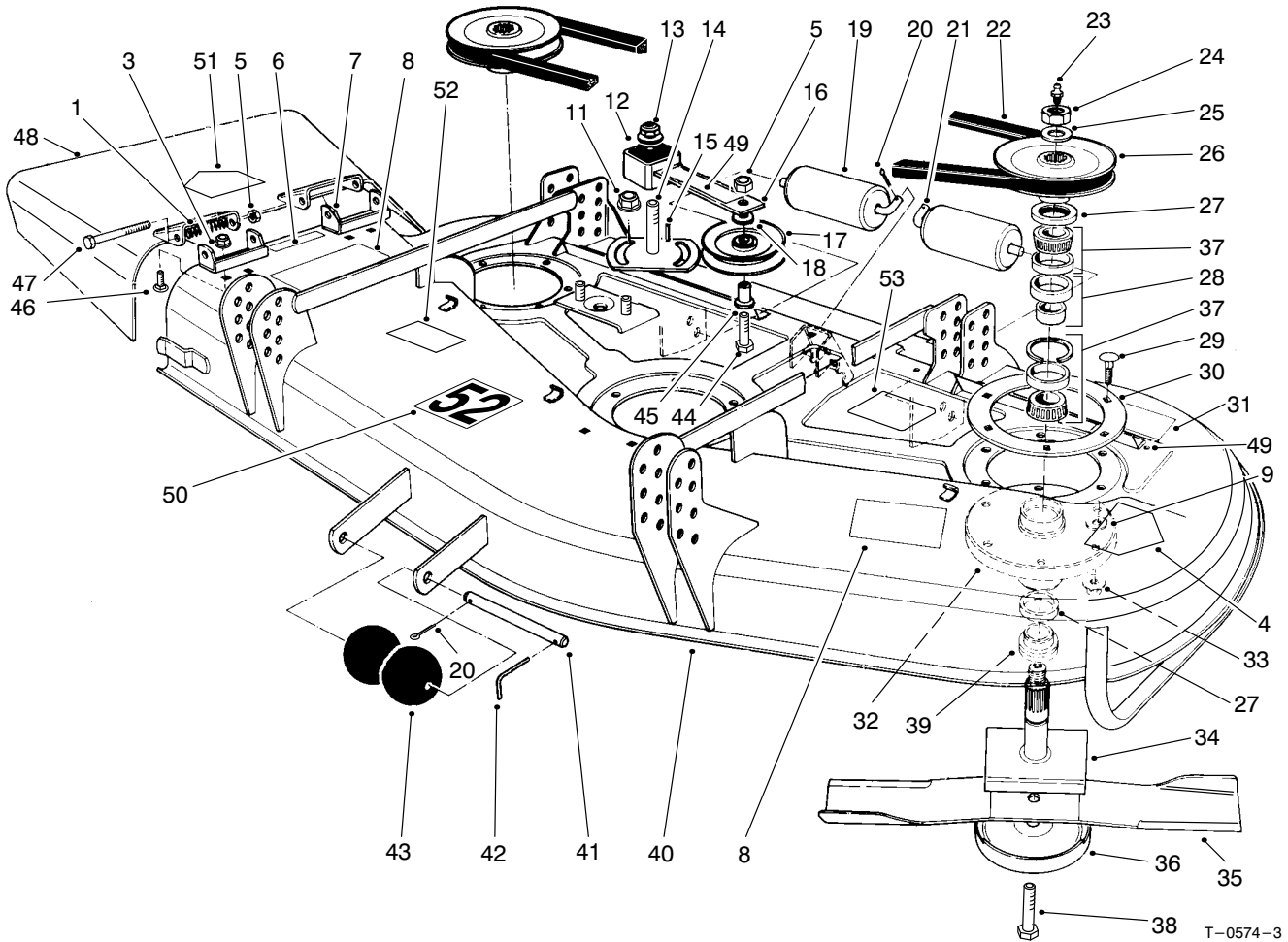
**52" SIDE-DISCHARGE CUTTING UNIT
FOR GROUNDSMASTER® 200 SERIES**



DECK AND SPINDLE ASSEMBLY

Ref. No.	Part No.	Description	No. Used
1	40-6230	Spring-Torsion	2
3	32128-20	Nut-HFH	4
4	43-8480	Decal-Danger	1
4	93-7815	Decal-Danger (Europe)	1
5	3296-5	Nut-Lock	3
6	66-6380	Decal-Danger	1
6	93-7828	Decal-Danger (Europe)	1
7	29-5590	Pivot Bracket-Deflector	2
8	66-1340	Decal-Danger	2
8	93-7824	Decal-Danger (Europe)	2
9	3256-24	Washer-Flat	18
11	3290-357	Nut-HFH	2
12	3256-27	Washer-Flat	1
13	3296-33	Nut-Lock	1
14	28-9060	Plate-Idler	1
15	5-1077	Key-Square	1
16	99-1297	Asm-Idler Socket/Bushing (Incl. Ref. #49	1

Ref. No.	Part No.	Description	No. Used
17	65-5940	Pulley-Idler	1
18	7-0081	Washer-Special	1
19	36-1740	Roller-Deck	2
20	3272-11	Pin-Cotter	3
21	40-0340	Shaft-Rear Roller	2
22	27-1160	V-Belt	1
23	302-2	Fitting-Grease	3
24	32146-20	Nut-Lock	3
25	7-4150	Washer	3
26	27-0970	Pulley	3
27	253-139	Seal-Wave	6
28	27-5970	Spacer-Matched Set	1
29	3231-22	Bolt-Carriage	18
30	27-7680	Ring-Deck Support	3
31	68-8340	Decal-Torque	1
31	93-7818	Decal-Torque (Europe)	1
32	61-4160	Housing-Spindle	3
33	32128-21	Nut-HFH	18



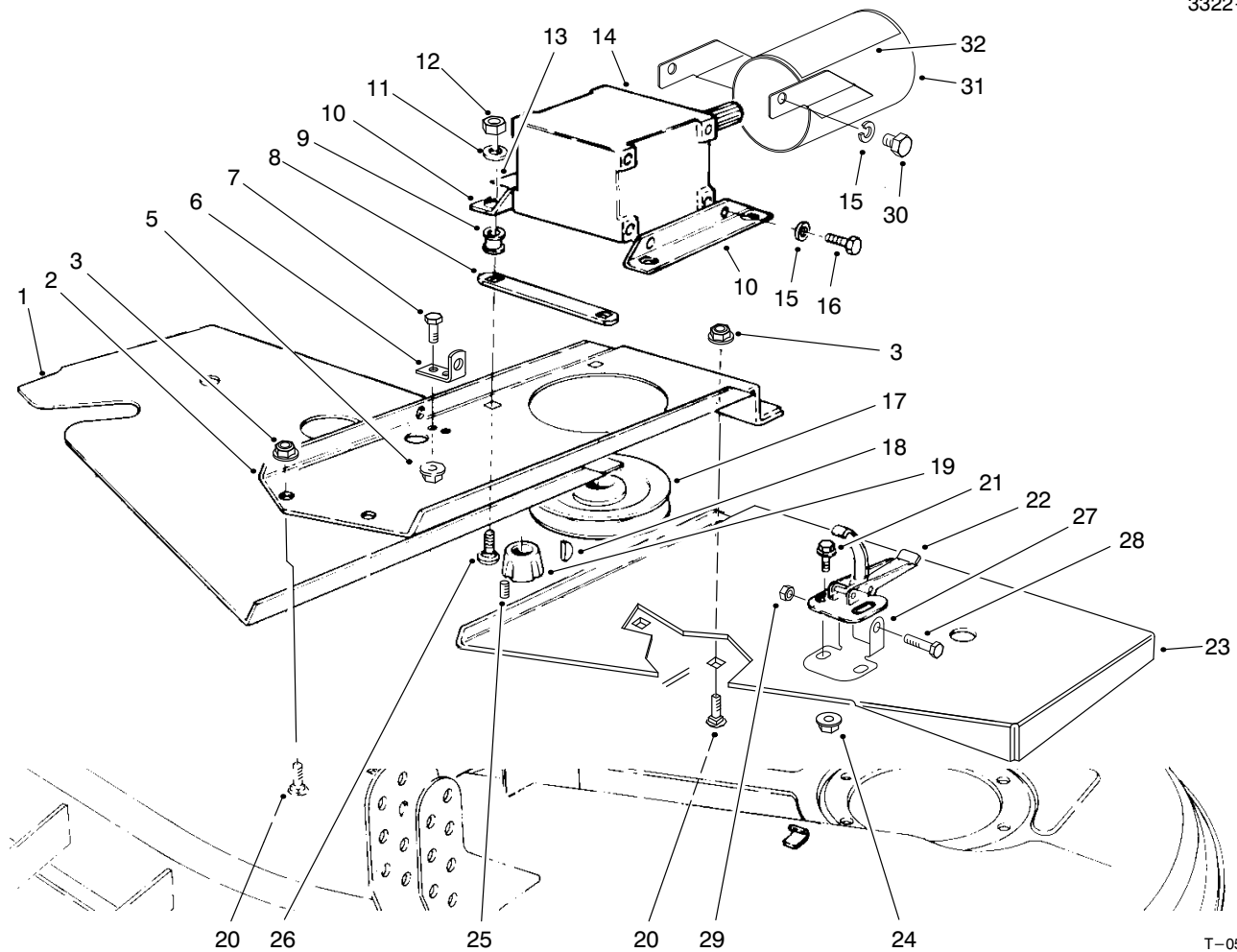
T-0574-3

DECK AND SPINDLE ASSEMBLY (Continued)

Ref. No.	Part No.	Description	No. Used
34	27-0920	Spindle-Shaft	3
35	27-0990	Blade	3
*	44-5480	Blade-High Sail (Optional)	3
36	72-9361	Anti-Scalp Cup	3
37	27-0960	Bearing Set-Matched	3
38	92-5816	Screw-Blade Bolt	3
39	27-0950	Spacer-Spindle Bearing	3
40	92-8792	Asm-Deck (Incl. Ref. #4, 6, 8, 31, 49, 50, 52 & 53)	1
40	95-6274	Asm-Deck (Europe) (Incl. Ref. #4, 6, 8, 31, 49, 50, 52 & 53))	1
41	40-6400	Shaft-Roller	1
42	57-0690	Pin-Cotter	1
43	29-4820	Roller	2
44	3211-8	Screw-HH	1
45	65-5950	Bushing-Pulley	1
46	3230-23	Bolt-Carriage	4
47	3211-15	Screw-HH	2

Ref. No.	Part No.	Description	No. Used
48	93-8714	Asm-Grass Deflector (Incl. Ref. #51)	1
49	67-5360	Decal-Danger	2
49	93-7273	Decal-Danger (Europe)	2
50	92-8779	Decal-Warning	1
50	93-7808	Decal-Warning (Europe)	1
51	54-9220	Decal-Danger	1
51	93-7316	Decal-Danger (Europe)	1
52	51-3960	Decal-52"	1
53	99-5171	Decal-Belt Routing	1
*	46-8530	Asm-Bearing (Incl. Ref. #28 & 37)	3
*	27-0870	Asm-Spindle (Incl. Ref. #23-28, 32, 34 & 39)	3
*	95-3078	Kit-Spindle (Incl. Ref. #9, 23-29, 32-34 & 36-39)	3
*	95-3070	Kit-Blade & Belt (Incl. Ref. 22 & 35)	1

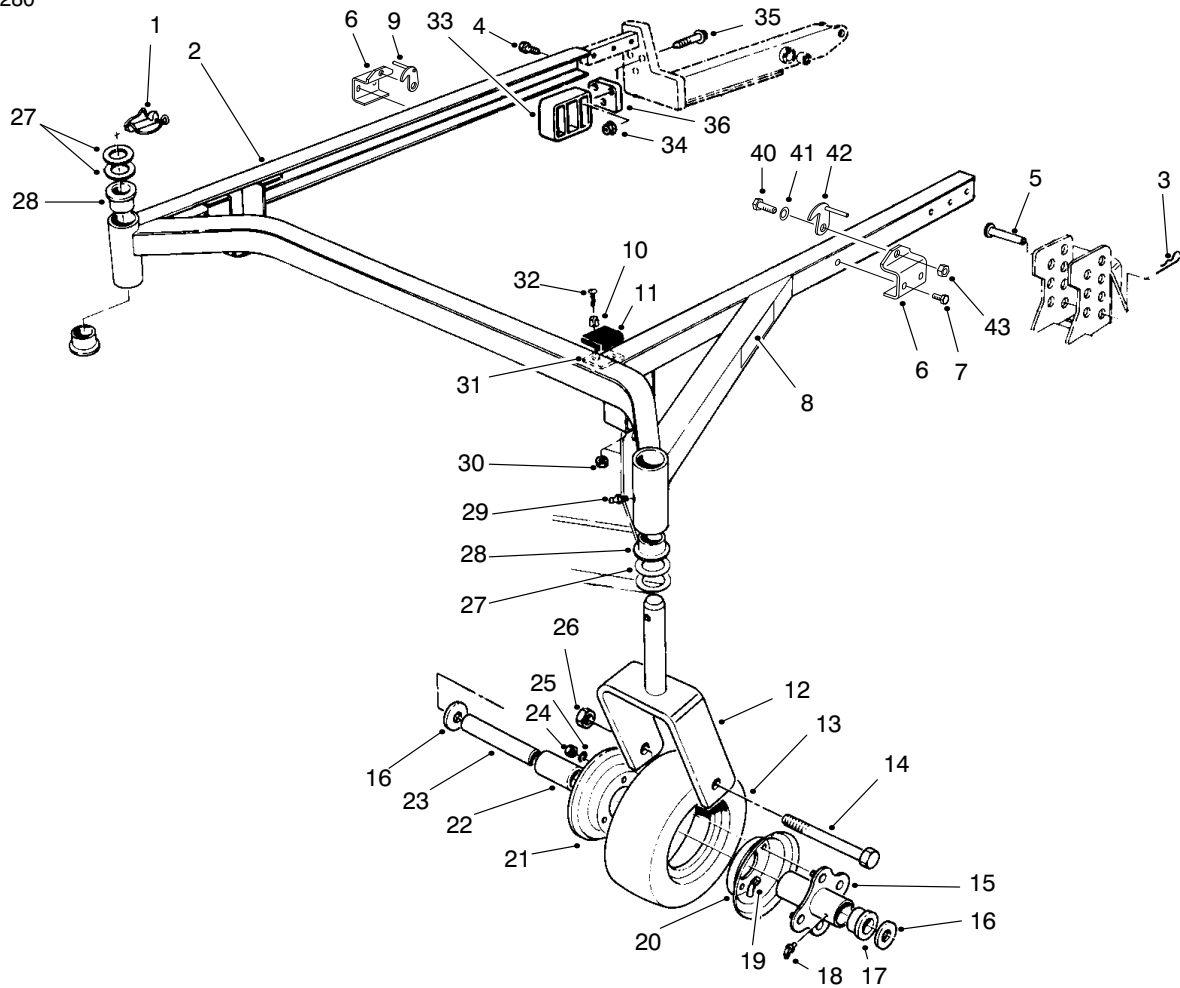
*Not Illustrated



T-0576-2

COVERS AND GEAR BOX ASSEMBLY

Ref. No.	Part No.	Description	No. Used	Ref. No.	Part No.	Description	No. Used
1	72-9330	Cover RH	1	18	3257-5	Key-Woodruff	1
2	72-9230	Base-Gear Box	1	19	27-6140	Bushing-Taper Lock (Incl. Ref. #25)	1
3	3290-357	Nut-HFH	4	20	3231-27	Bolt-Carriage	4
5	32128-20	Nut-HFH	2	21	3290-321	Screw-Machine	6
6	72-9240	Bracket-Extension	1	22	249-21	Latch-Draw	3
7	322-4	Screw-HH	2	23	72-9340	Cover LH	1
8	68-9890	Cover-Gear Box	1	24	32128-17	Nut-HFH	6
9	63-9750	ISO Mount-Gear Box	4	25	3245-9	Screw-Set	2
10	68-8560	Bracket-Gear Box	2	26	3231-26	Bolt-Carriage	4
11	63-8410	Washer	4	27	93-7043	Retainer (Europe)	2
12	32153-2	Nut-Lock	4	28	321-8	Screw-HH (Europe)	2
13	70-2560	Decal-Lube	1	29	3296-56	Nut-Lock Lock (Europe)	2
13	93-6697	Decal-Lube (Europe)	1	30	323-2	Screw-HH (Europe)	2
14	68-6810	Asm-Gear Box	1	31	99-8408	Guard-P.T.O. Shaft (Europe) (Incl. Ref. #32)	1
15	3253-21	Washer-Flat	4	32	93-7283	Decal-Danger (Europe)	1
15	3253-21	Washer-Flat (Europe)	6				
16	323-4	Screw-HH	4				
17	63-9900	Pulley-Gear Box	1				



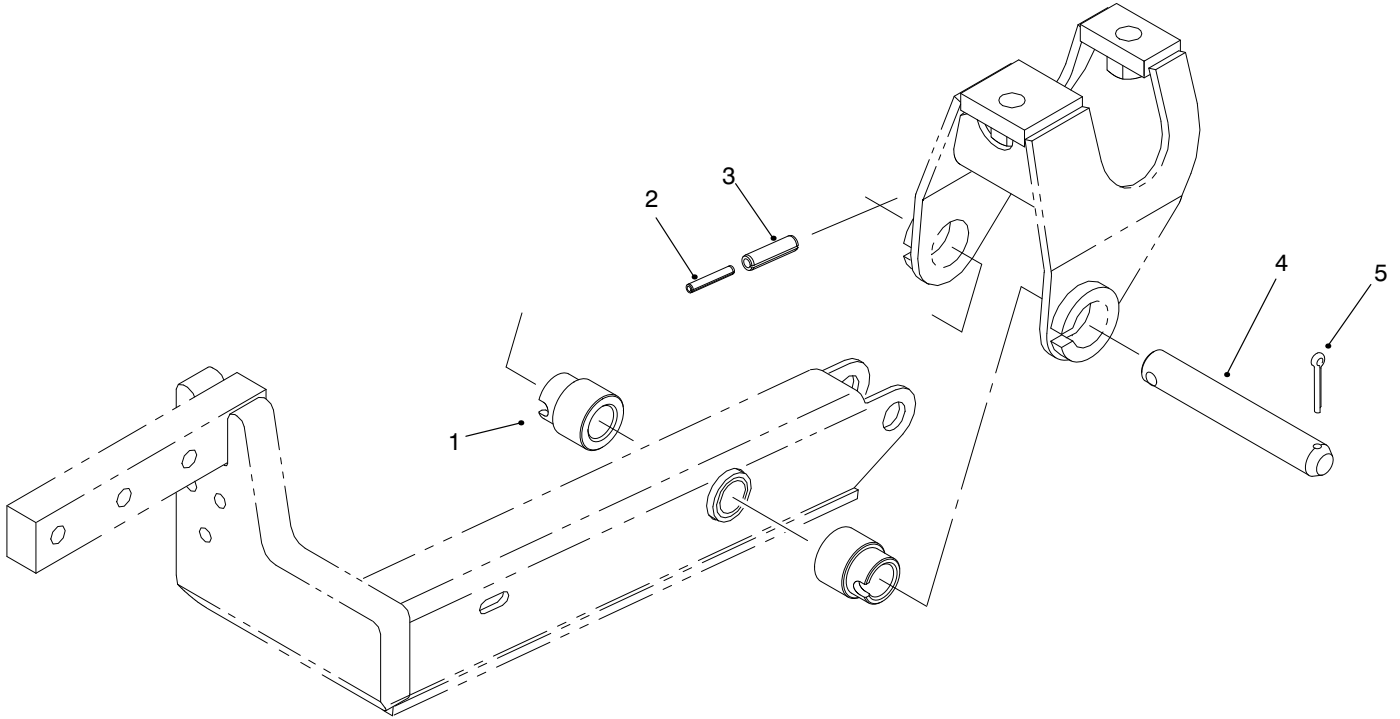
T-1249-2

CARRIER FRAME ASSEMBLY

Ref. No.	Part No.	Description	No. Used
1	283-71	Pin-Lynch	2
2	83-4550	Frame-Deck Suspension (Incl. Ref. #28 & 29)	1
3	3290-355	Pin-Hair	4
4	325-32	Screw-HH	6
5	283-55	Pin-Clevis	4
6	95-2718	Bracket-Latch (Europe)	2
7	32144-11	Screw-HH (Europe)	4
8	68-8360	Decal-H.O.C.	1
8	93-7819	Decal-H.O.C. (Europe)	1
9	95-2715	Retainer-Deck RH (Europe)	1
10	40-9520	Spacer-Split	4
11	40-0330	Cushion-Rubber	2
12	68-8900	Fork-Castor, Front	2
13	68-8960	Tire	2
14	325-19	Screw-HH	2
15	68-8940	Hub-Center (Incl. Ref. #18)	2
16	3256-6	Washer-Thrust	4
17	62-5580	Bushing	4
18	302-61	Fitting-Grease	2
19	68-8950	Tube w/Valve	2
20	68-8920	Wheel Half-Female	2
21	68-8930	Wheel Half-Male	2
22	62-5570	Bearing-Roller	2
23	68-8980	Bushing-Spanner	2
24	3219-2	Nut-Hex.	8

Ref. No.	Part No.	Description	No. Used
25	3253-4	Washer-Lock	8
26	32153-5	Nut-Lock	2
27	3-6781	Washer-Thrust	8
28	94-1291	Bushing-Special	4
29	302-5	Fitting-Grease	2
30	3296-2	Nut-Lock	4
31	42-6200	Cushion-Shim	A/R
32	32122-28	Screw-Mach. Truss Hd.	4
33	83-4520	Cradle-Rear	2
34	32128-40	Nut-HFH	6
35	66-9302	Screw-HFH	6
36	83-4580	Spacer	2
37	76-3080	Lift Arm RH (Incl. Ref. #38 & 39)	1
*	76-3090	Lift Arm LH (Incl. Ref. #38 & 39)	1
38	92-5648	Bushing	4
39	302-62	Fitting-Grease	2
40	3214-2	Screw-HH (Europe)	2
41	3290-317	Washer-Wave (Europe)	2
42	95-2716	Retainer-Deck LH (Europe)	1
43	3296-33	Nut-Lock (Europe)	2
*	68-8970	Castor Wheel (Incl. Ref. #13, 15, 17-22 & 24-25)	2
*	95-3077	Kit-Castor Wheel (2) (Incl. Ref. #13-26)	1

*Not Illustrated

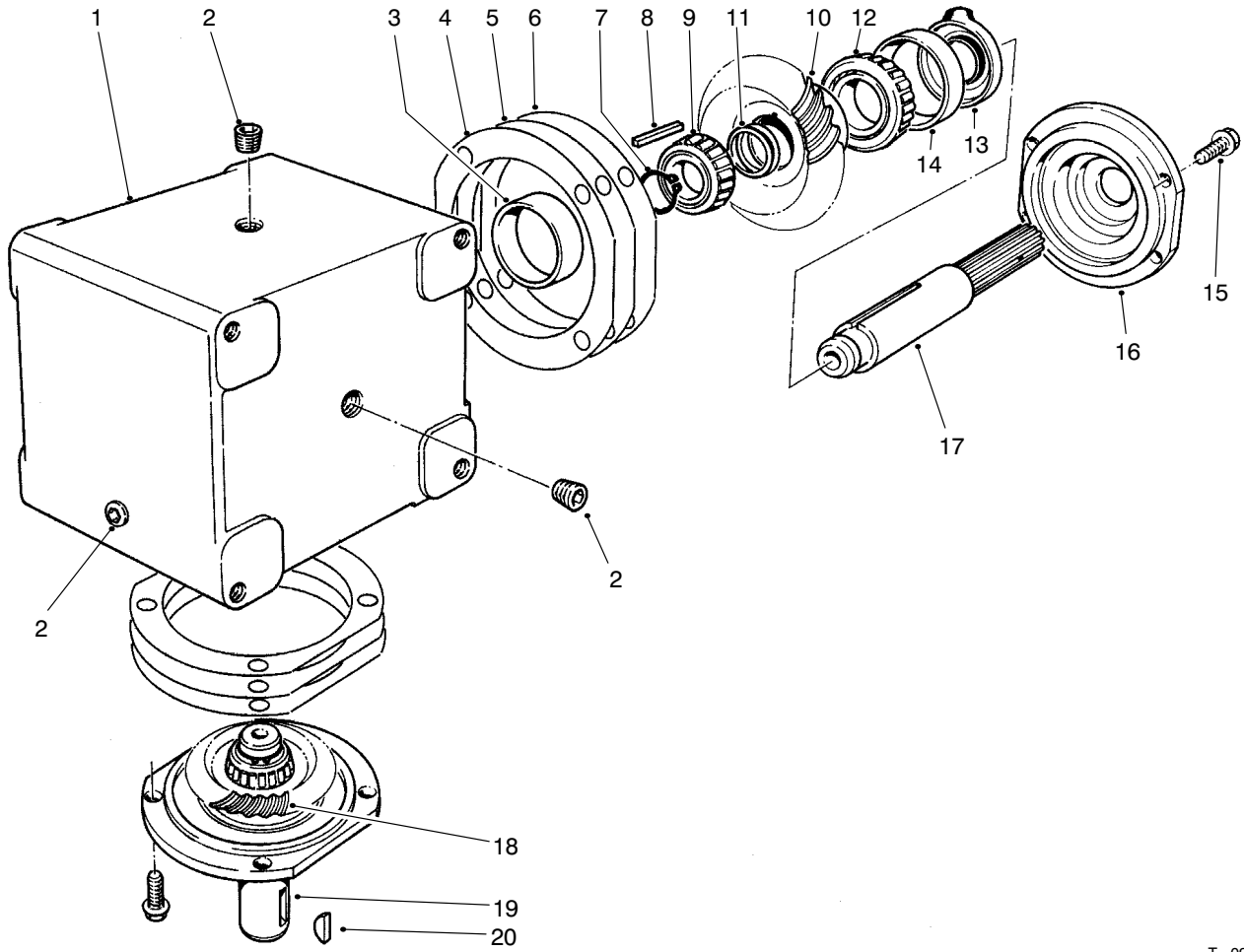


T-3199

PIVOT PIN & SPACER ASSEMBLY

Ref. No.	Part No.	Description	No. Used
1	98-7926	Spacer-Lift Arm	4
2	32121-71	Pin-Spring	2
3	32121-49	Pin-Spring	2

Ref. No.	Part No.	Description	No. Used
4	98-2348	Asm-Pin, Pivot (Incl. Ref. #2 & 3)	2
5	3272-17	Pin-Cotter	2

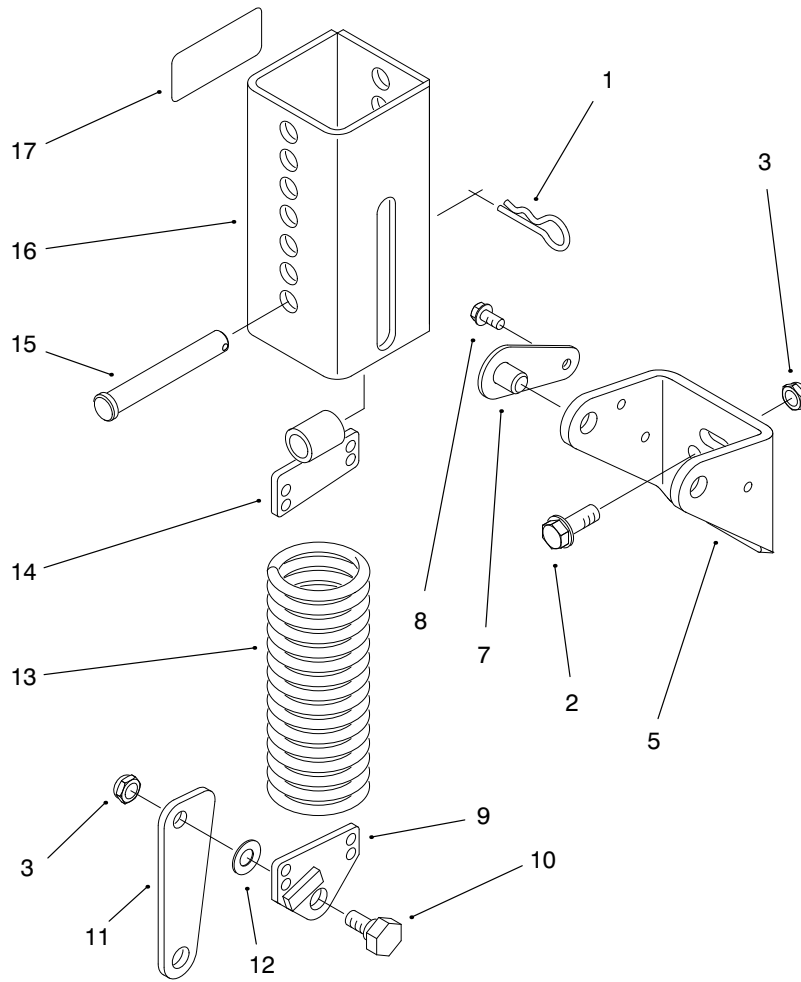


T-0977-1

GEAR BOX ASSEMBLY

Ref. No.	Part No.	Description	No. Used
1	68-7030	Housing	1
2	62-3490	Plug-Pipe (Solid)	4
3	62-3360	Cup-Bearing	2
4	62-3420	Gasket (.015)	A/R
5	62-3430	Gasket (.005)	A/R
6	62-3440	Gasket (.003)	A/R
7	68-7070	Ring-Retaining	2
8	62-3380	Key	2
9	62-3370	Cone-Bearing	2
10	68-7080	Gear	1

Ref. No.	Part No.	Description	No. Used
11	72-9370	Shim (.020)	2
12	62-3330	Cone-Gear	1
13	62-3400	Seal	2
14	62-3340	Cup-Bearing	2
15	62-3310	Screw-Cap	8
16	62-3410	Cap	2
17	68-7040	Shaft	1
18	68-7060	Gear	1
19	68-7050	Shaft	1
*	68-6810	Asm-Gear Box	1



T-1219-1

COUNTER BALANCE

Ref. No.	Part No.	Description	No. Used
1	3290-355	Pin-Hair Cotter	1
2	3234-11	Screw-HFH	2
3	3296-44	Nut-Lock	2
5	66-8460	Bracket-Mounting	1
7	70-7920	Asm-Pin, Lock	2
8	12-3270	Screw-Self Tapping	2
9	66-8420	End-Spring	1
10	46-3380	Bolt-Shoulder	2

Ref. No.	Part No.	Description	No. Used
11	66-8450	Link-Knee	1
12	3256-24	Washer-Flat	2
13	66-8390	Spring-Extension	1
14	70-7940	End-Spring	1
15	283-69	Pin-Clevis	1
16	70-7970	Asm-Cover, Spring	1
17	55-4300	Decal-Caution	2
17	93-6696	Decal-Caution (Europe)	2

TORO PART NUMBER INDEX

Part No.	Description	Pg. No.	Ref. No.	Qty.	Part No.	Description	Pg. No.	Ref. No.	Qty.
3-6781	Washer-Thrust	4	27	8	68-6810	Asm-Gear Box	6	*	1
5-1077	Key-Square	1	15	1	68-7030	Housing	6	1	1
7-0081	Washer-Special	1	18	1	68-7040	Shaft	6	17	1
7-4150	Washer	1	25	3	68-7050	Shaft	6	19	1
12-3270	Screw-Self Tapping	7	8	2	68-7060	Gear	6	18	1
27-0870	Asm-Spindle	2	*	3	68-7070	Ring-Retaining	6	7	2
27-0920	Spindle-Shaft	2	34	3	68-7080	Gear	6	10	1
27-0950	Spacer-Spindle Bearing	2	39	3	68-8340	Decal-Torque	1	31	1
27-0960	Bearing Set-Matched	2	37	3	68-8360	Decal-H.O.C.	4	8	1
27-0970	Pulley	1	26	3	68-8560	Bracket-Gear Box	3	10	2
27-0990	Blade	2	35	3	68-8900	Fork-Castor, Front	4	12	2
27-1160	V-Belt	1	22	1	68-8920	Wheel Half-Female	4	20	2
27-5970	Spacer-Matched Set	1	28	1	68-8930	Wheel Half-Male	4	21	2
27-6140	Bushing-Taper Lock	3	19	1	68-8940	Hub-Center	4	15	2
27-7680	Ring-Deck Support	1	30	3	68-8950	Tube w/Valve	4	19	2
28-9060	Plate-Idler	1	14	1	68-8960	Tire	4	13	2
29-4820	Roller	2	43	2	68-8970	Castor Wheel	4	*	2
29-5590	Pivot Bracket-Deflector	1	7	2	68-8980	Bushing-Spanner	4	23	2
36-1740	Roller-Deck	1	19	2	68-9890	Cover-Gear Box	3	8	1
40-0330	Cushion-Rubber	4	11	2	70-2560	Decal-Lube	3	13	1
40-0340	Shaft-Rear Roller	1	21	2	70-7920	Asm-Pin, Lock	7	7	2
40-6230	Spring-Torsion	1	1	2	70-7940	End-Spring	7	14	1
40-6400	Shaft-Roller	2	41	1	70-7970	Asm-Cover, Spring	7	16	1
40-9520	Spacer-Split	4	10	4	72-9230	Base-Gear Box	3	2	1
42-6200	Cushion-Shim	4	31A/R		72-9240	Bracket-Extension	3	6	1
43-8480	Decal-Danger	1	4	1	72-9330	Cover RH	3	1	1
44-5480	Blade-High Sail (Optional)	2	*	3	72-9340	Cover LH	3	23	1
46-3380	Bolt-Shoulder	7	10	2	72-9361	Anti-Scalp Cup	2	36	3
46-8530	Asm-Bearing	2	*	3	72-9370	Shim (.020)	6	11	2
51-3960	Decal-52"	2	52	1	76-3080	Lift Arm RH	4	37	1
54-9220	Decal-Danger	2	51	1	76-3090	Lift Arm LH	4	*	1
55-4300	Decal-Caution	7	17	2	83-4520	Cradle-Rear	4	33	2
57-0690	Pin-Cotter	2	42	1	83-4550	Frame-Deck Suspension	4	2	1
61-4160	Housing-Spindle	1	32	3	83-4580	Spacer	4	36	2
62-3310	Screw-Cap	6	15	8	92-5648	Bushing	4	38	4
62-3330	Cone-Gear	6	12	1	92-5816	Screw-Blade Bolt	2	38	3
62-3340	Cup-Bearing	6	14	2	92-8779	Decal-Warning	2	50	1
62-3360	Cup-Bearing	6	3	2	92-8792	Asm-Deck	2	40	1
62-3370	Cone-Bearing	6	9	2	93-6696	Decal-Caution (Europe)	7	17	2
62-3380	Key	6	8	2	93-6697	Decal-Lube (Europe)	3	13	1
62-3400	Seal	6	13	2	93-7043	Retainer (Europe)	3	27	2
62-3410	Cap	6	16	2	93-7273	Decal-Danger (Europe)	2	49	2
62-3420	Gasket (.015)	6	4A/R		93-7283	Decal-Danger (Europe)	3	32	1
62-3430	Gasket (.005)	6	5A/R		93-7316	Decal-Danger (Europe)	2	51	1
62-3440	Gasket (.003)	6	6A/R		93-7808	Decal-Warning (Europe)	2	50	1
62-3490	Plug-Pipe (Solid)	6	2	4	93-7815	Decal-Danger (Europe)	1	4	1
62-5570	Bearing-Roller	4	22	2	93-7818	Decal-Torque (Europe)	1	31	1
62-5580	Bushing	4	17	4	93-7819	Decal-H.O.C. (Europe)	4	8	1
63-8410	Washer	3	11	4	93-7824	Decal-Danger (Europe)	1	8	2
63-9750	ISO Mount-Gear Box	3	9	4	93-7828	Decal-Danger (Europe)	1	6	1
63-9900	Pulley-Gear Box	3	17	1	93-8714	Asm-Grass Deflector	2	48	1
65-5940	Pulley-Idler	1	17	1	94-1291	Bushing-Special	4	28	4
65-5950	Bushing-Pulley	2	45	1	95-2715	Retainer-Deck RH	4	9	1
66-1340	Decal-Danger	1	8	2	95-2716	Retainer-Deck LH	4	42	1
66-6380	Decal-Danger	1	6	1	95-2718	Bracket-Latch (Europe)	4	6	2
66-8390	Spring-Extension	7	13	1	95-3070	Kit-Blade & Belt	2	*	1
66-8420	End-Spring	7	9	1	95-3077	Kit-Castor Wheel (2)	4	*	1
66-8450	Link-Knee	7	11	1	95-3078	Kit-Spindle	2	*	3
66-8460	Bracket-Mounting	7	5	1	95-6274	Asm-Deck (Europe)	2	40	1
66-9302	Screw-HFH	4	35	6	98-2348	Asm-Pin, Pivot	5	4	2
67-5360	Decal-Danger	2	49	2	98-7926	Spacer-Lift Arm	5	1	4
68-6810	Asm-Gear Box	3	14	1	99-1297	Asm-Idler Socket/Bushing	1	16	1

*Not Illustrated

TORO PART NUMBER INDEX (Cont.)

3322-280

Part No.	Description	Pg. Ref. No. No. Qty.	Part No.	Description	Pg. Ref. No. No. Qty.
99-5171	Decal-Belt Routing	2 53 1	3256-24	Washer-Flat	1 9 18
99-8408	Guard-P.T.O. Shaft (Europe)	3 31 1	3256-24	Washer-Flat	7 12 2
249-21	Latch-Draw	3 22 3	3256-27	Washer-Flat	1 12 1
253-139	Seal-Wave	1 27 6	3257-5	Key-Woodruff	3 18 1
283-55	Pin-Clevis	4 5 4	3272-11	Pin-Cotter	1 20 3
283-69	Pin-Clevis	7 15 1	3272-17	Pin-Cotter	5 5 2
283-71	Pin-Lynch	4 1 2	3290-317	Washer-Wave (Europe)	4 41 2
302-2	Fitting-Grease	1 23 3	3290-321	Screw-Machine	3 21 6
302-5	Fitting-Grease	4 29 2	3290-355	Pin-Hair	4 3 4
302-61	Fitting-Grease	4 18 2	3290-355	Pin-Hair Cotter	7 1 1
302-62	Fitting-Grease	4 39 2	3290-357	Nut-HFH	3 3 4
321-8	Screw-HH (Europe)	3 28 2	3290-357	Nut-HFH	1 11 2
322-4	Screw-HH	3 7 2	3296-2	Nut-Lock	4 30 4
323-2	Screw-HH (Europe)	3 30 2	3296-5	Nut-Lock	1 5 3
323-4	Screw-HH	3 16 4	3296-33	Nut-Lock	1 13 1
325-19	Screw-HH	4 14 2	3296-33	Nut-Lock (Europe)	4 43 2
325-32	Screw-HH	4 4 6	3296-44	Nut-Lock	7 3 2
3211-8	Screw-HH	2 44 1	3296-56	Nut-Lock Lock (Europe)	3 29 2
3211-15	Screw-HH	2 47 2	32121-49	Pin-Spring	5 3 2
3214-2	Screw-HH (Europe)	4 40 2	32121-71	Pin-Spring	5 2 2
3219-2	Nut-Hex.	4 24 8	32122-28	Screw-Mach. Truss Hd.	4 32 4
3230-23	Bolt-Carriage	2 46 4	32128-17	Nut-HFH	3 24 6
3231-22	Bolt-Carriage	1 29 18	32128-20	Nut-HFH	1 3 4
3231-26	Bolt-Carriage	3 26 4	32128-20	Nut-HFH	3 5 2
3231-27	Bolt-Carriage	3 20 4	32128-21	Nut-HFH	1 33 18
3234-11	Screw-HFH	7 2 2	32128-40	Nut-HFH	4 34 6
3245-9	Screw-Set	3 25 2	32144-11	Screw-HH (Europe)	4 7 4
3253-4	Washer-Lock	4 25 8	32146-20	Nut-Lock	1 24 3
3253-21	Washer-Flat	3 15 4	32153-2	Nut-Lock	3 12 4
3253-21	Washer-Flat (Europe)	3 15 6	32153-5	Nut-Lock	4 26 2
3256-6	Washer-Thrust	4 16 4			

*Not Illustrated

