



# CE Guard Kit

## Groundsmaster® 7200/7210 Traction Unit with 60in Side Discharge Mower

Model No. 30658

### Installation Instructions

# Safety

## Safety and Instructional Decals



Safety decals and instructions are easily visible to the operator and are located near any area of potential danger. Replace any decal that is damaged or missing.



decal119-6807

119-6807

1. Warning—no step



# Installation

## Loose Parts

Use the chart below to verify that all parts have been shipped.

Procedure	Description	Qty.	Use
<b>1</b>	No parts required	–	Prepare the mower.
<b>2</b>	Pulley Belt	1 1	Install the kit belt and pulley.
<b>3</b>	Pulley shield Push nut	1 1	Mount the pulley shield.
<b>4</b>	Drive shaft cover Lock washer (3/8 inch) Hex-head screw (3/8 x 3/4 inch) Grommet	1 4 4 1	Mount the drive shaft cover.
<b>5</b>	Left deck cover Grommet Hex-flange screw (5/16 x 3/4 inch) Push nut Retainer nut	1 2 1 1 2	Mount the left deck cover.
<b>6</b>	Center deck cover Hex flange screw (5/16 x 3/4 inch) Push nut	1 2 2	Mount the inner deck cover.
<b>7</b>	Right shield Right deck cover Hex screw Flange nut	1 1 2 2	Mount the right hand shield.
<b>8</b>	Hex screw (M8) Hex flange screw (5/16 x 3/4 inch) Flat washer (5/16 inch) Push nut Larger retainer nut	1 1 1 2 1	Mount the right deck cover.
<b>9</b>	Guard assembly Hex locknut	1 1	Mount the guard assembly.

## Media and Additional Parts

Description	Qty.	Use
Installation instructions	1	Reference for installation of kit
Parts catalog	1	Use to reference part numbers

# 1

## Preparing the Mower

No Parts Required

### Procedure

1. Park the machine on a level surface, lower the cutting units, and engage the parking brake.
2. Lower the cutting unit to the 1 inch height-of-cut setting, move the throttle lever to the SLOW position, shut off the engine, set the parking brake, and remove the ignition key.
3. Remove the 2 belt covers from the top of the cutting unit and discard the covers.
4. Remove any debris from the top of the cutting unit.

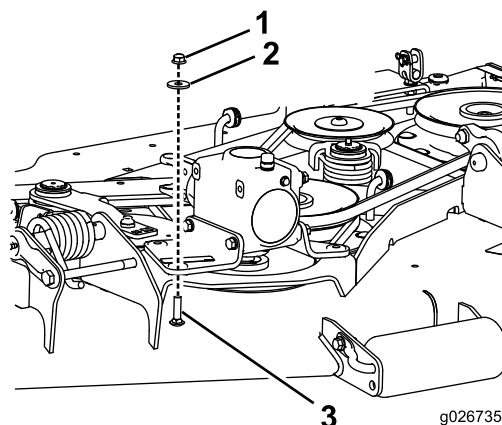


Figure 1

1. Nut
2. Washer
3. Carriage bolt

3. Turn the gearbox over, remove the existing pulley, and install the kit pulley (Figure 2).

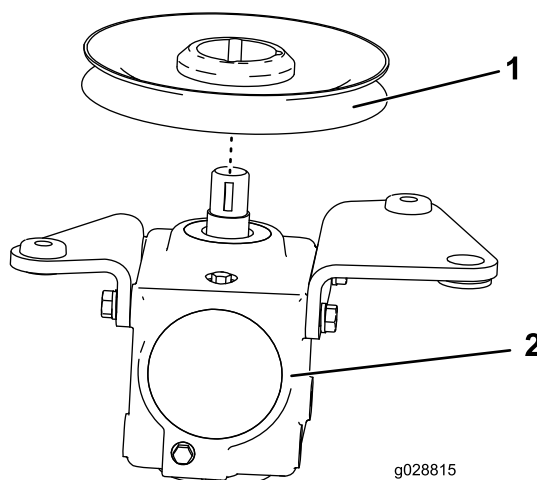


Figure 2

1. Kit pulley
2. Gearbox

4. Remove the belt that routes on the right side of the mower deck and install the kit belt in the same location (Figure 3).

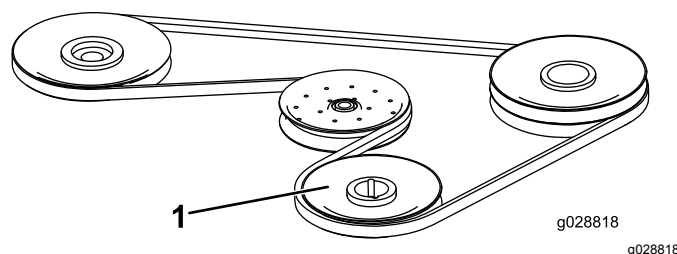


Figure 3

Belt routing configuration

1. Kit pulley (after gearbox is installed)

5. Install the gearbox (see Figure 1).

# 2

## Installing the Kit Belt and Pulley

Parts needed for this procedure:

1	Pulley
1	Belt

### Procedure

1. Relieve the tension on the mower belt.
2. Remove the 3 nuts, washers, and carriage bolts securing the mounting brackets of the gearbox to the mower deck (Figure 1).

**Note:** The driveshaft does not need to be removed from the gearbox.

# 3

## Mounting the Pulley Shield

Parts needed for this procedure:

1	Pulley shield
1	Push nut

### Procedure

1. Remove the nuts and washers from the carriage bolts that secure the front of the gear box mounting brackets to the mower deck (Figure 4).

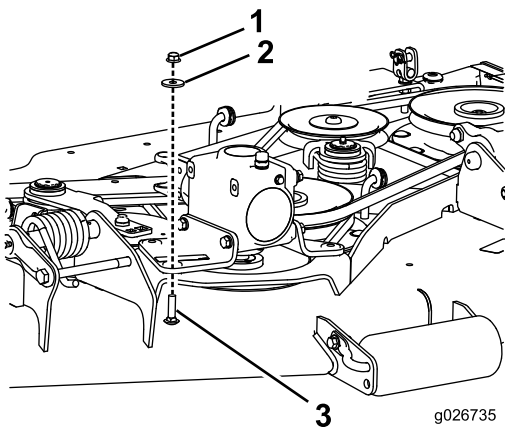


Figure 4

1. Nut
2. Washer
3. Carriage bolt

2. Using the nuts removed in the previous step, mount the pulley shield to the gear box mounting brackets (Figure 5).

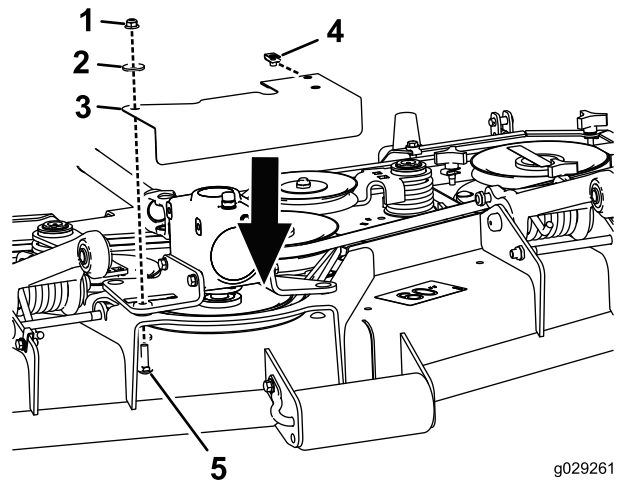


Figure 5

1. Nut
2. Washer
3. Pulley shield
4. Retainer nut
5. Carriage bolt

# 4

## Mounting the Drive Shaft Cover

Not required on Groundsmaster 360

### Parts needed for this procedure:

1	Drive shaft cover
4	Lock washer (3/8 inch)
4	Hex-head screw (3/8 x 3/4 inch)
1	Grommet

### Procedure

Mount the drive shaft cover to the gear box with 4 lock washers and 4 hex-head screws ([Figure 6](#)).

**Note:** The rubber grommet is used to stop rattling when another cover is placed over it.

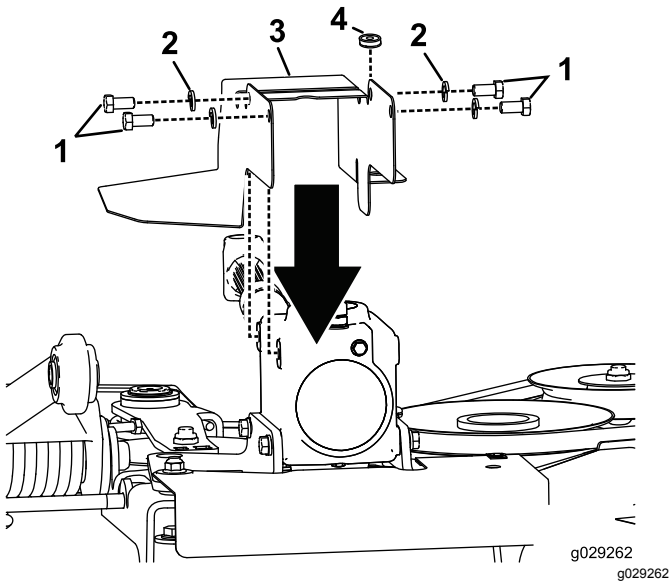


Figure 6

- |                   |                      |
|-------------------|----------------------|
| 1. Hex-head screw | 3. Drive shaft cover |
| 2. Lock washer    | 4. Grommet           |

# 5

## Mounting the Left Deck Cover

### Parts needed for this procedure:

1	Left deck cover
2	Grommet
1	Hex-flange screw (5/16 x 3/4 inch)
1	Push nut
2	Retainer nut

### Procedure

Install the left deck cover ([Figure 7](#)).

**Note:** The hole on the deck that the hex bolt uses will have to be opened up to 11.2 mm (0.44 inch).

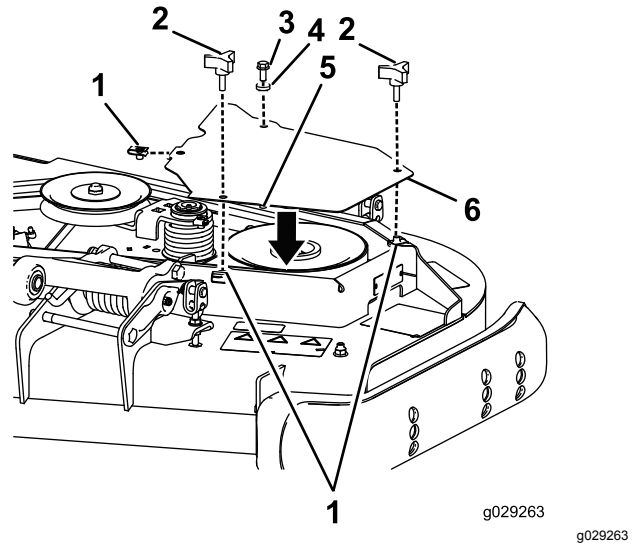


Figure 7

- |                 |                                |
|-----------------|--------------------------------|
| 1. Retainer nut | 4. Washer                      |
| 2. Knob         | 5. Retainer nut and drill hole |
| 3. Hex bolt     | 6. Left deck cover             |

# 6

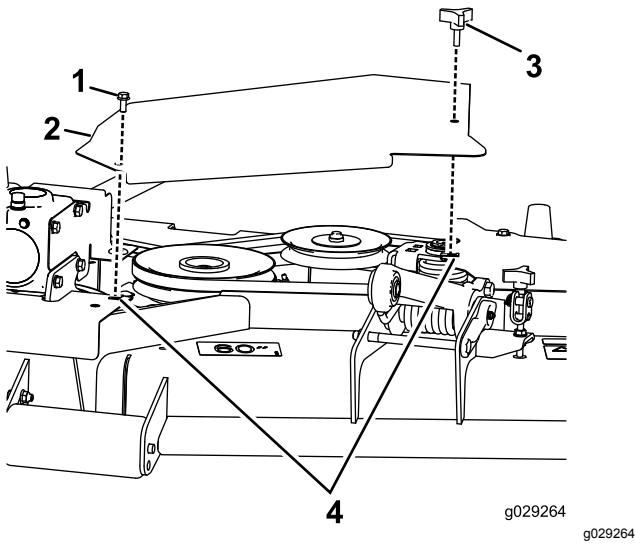
## Mounting the Center Deck Cover

### Parts needed for this procedure:

1	Center deck cover
2	Hex flange screw (5/16 x 3/4 inch)
2	Push nut

### Procedure

Install the center deck cover ([Figure 8](#)).



**Figure 8**

- |                      |                 |
|----------------------|-----------------|
| 1. Nut               | 3. Knob         |
| 2. Center deck cover | 4. Retainer nut |

# 7

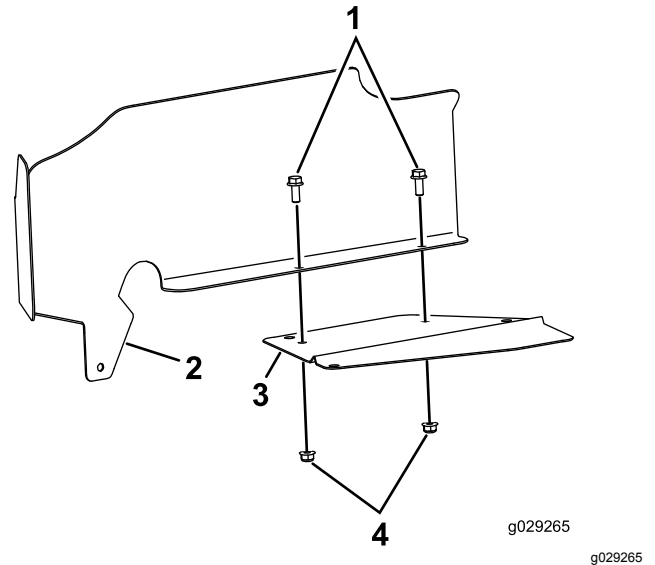
## Mounting the Right Shield

### Parts needed for this procedure:

1	Right shield
1	Right deck cover
2	Hex screw
2	Flange nut

### Procedure

Mount the right shield onto the right deck cover as shown in [Figure 9](#).



**Figure 9**

- |                 |                     |
|-----------------|---------------------|
| 1. Hex screw    | 3. Right deck cover |
| 2. Right shield | 4. Flange nut       |

# 8

## Mounting the Right Deck Cover

### Parts needed for this procedure:

1	Hex screw (M8)
1	Hex flange screw (5/16 x 3/4 inch)
1	Flat washer (5/16 inch)
2	Push nut
1	Larger retainer nut

### Procedure

1. **For decks without grass collection system installed:** Install the right shield assembly (Figure 10).

**Note:** You will have to drill a hole in the frame of the deck to install the lower bolt and retainer nut. Refer to Figure 13 and Figure 14.

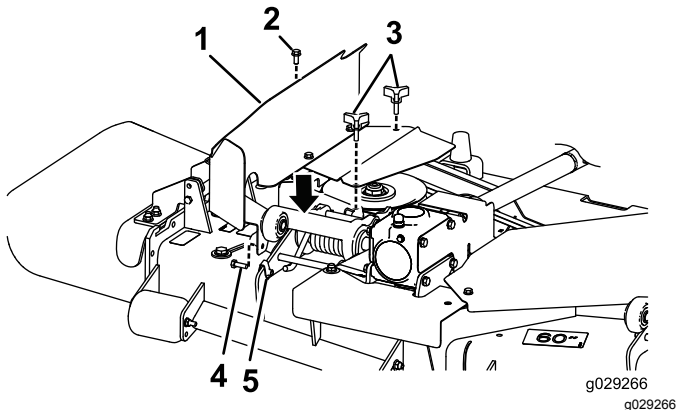


Figure 10

1. Right shield assembly
2. Bolt
3. Knob
4. Bolt
5. Retainer nut

2. **For models with grass collection system:** Install the right shield (Figure 11).

**Note:** You will have to drill a hole in the existing grass collection shield, part of the grass collection CE kit, for the right shield to be installed properly. Refer to Figure 12 to drill the hole on top of the grass collection shield. You can also use the right shield as a template to double check your drill location.

**Note:** You will have to drill a hole in the frame of the deck to install the lower bolt and retainer nut. Refer to Figure 13 and Figure 14.

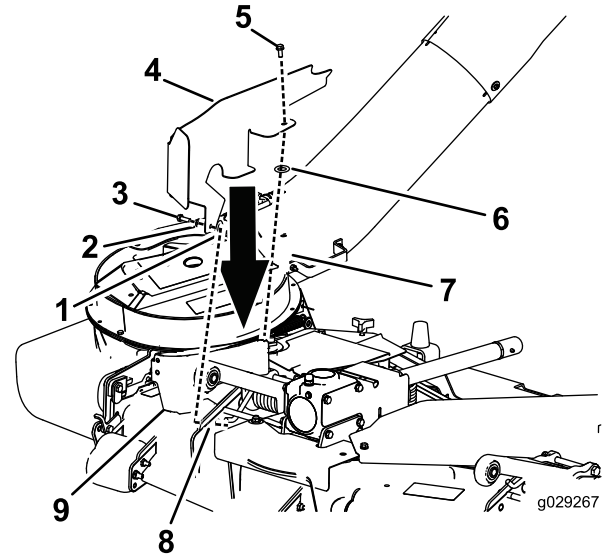


Figure 11

1. Push pin
2. Washer
3. Bolt
4. Right shield
5. Bolt
6. Washer
7. Grass collection
8. Retainer nut
9. Grass collection shield (part of the grass collection CE kit)

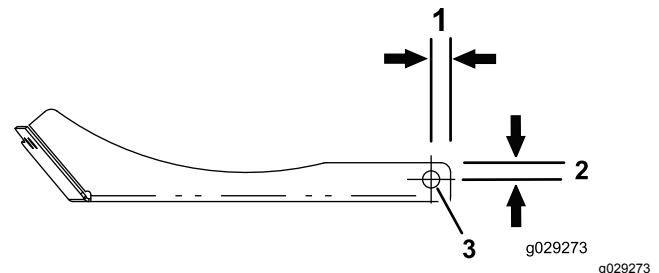
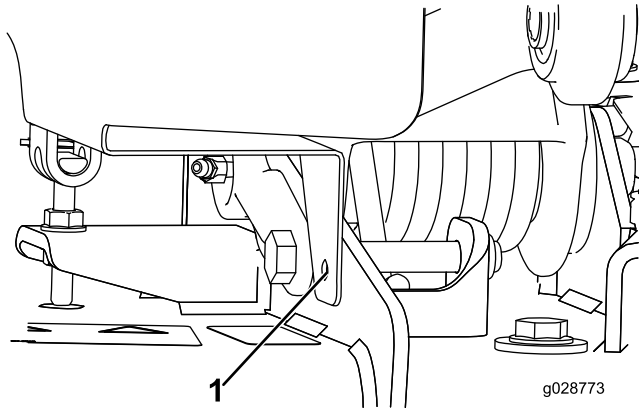


Figure 12

1. 12.7 mm (0.50 inch)
2. 10.9 mm (0.43 inch)
3. 11.1 mm (0.44 inch) drill hole

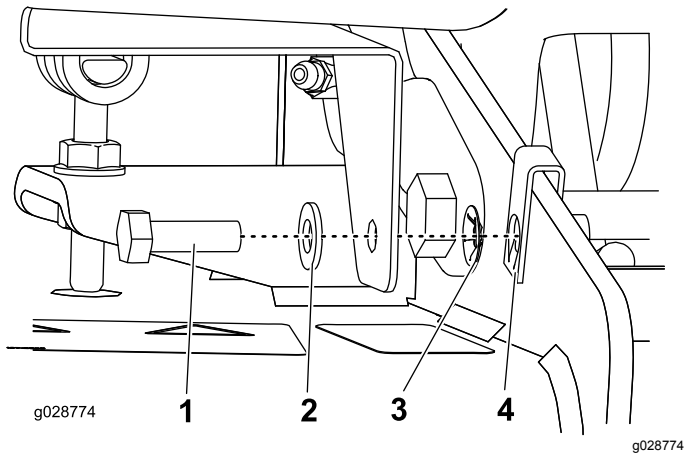
3. Mark the center of the hole in the lower tab at the front of the cover, remove the cover, and drill a 1.12 cm (0.44 inch) hole [Figure 13](#).



**Figure 13**

1. Mark hole here.

4. Secure the cover with the hardware provided ([Figure 14](#)).



**Figure 14**

- |              |                 |
|--------------|-----------------|
| 1. Hex screw | 3. Push pin     |
| 2. Washer    | 4. Retainer nut |

# 9

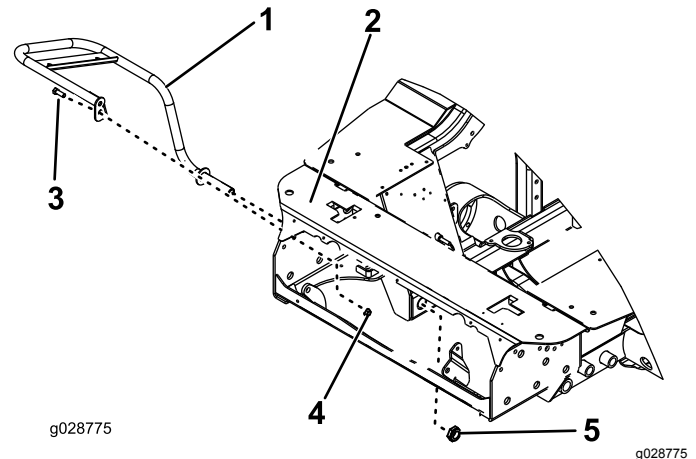
## Mounting the Guard Assembly

### Parts needed for this procedure:

1	Guard assembly
1	Hex locknut

### Procedure

1. Remove the front cover of the frame of the machine, near the brake lever.
2. Remove the bolt and nut attaching the brake shaft bracket ([Figure 15](#)).
3. Through the large front hole in the frame, install the guard and loosely install the hex locknut ([Figure 15](#)).
4. Assemble the bolt and nut previously removed through the guard and tighten ([Figure 15](#)).



**Figure 15**

- |                   |                |
|-------------------|----------------|
| 1. Guard assembly | 4. Nut         |
| 2. Machine frame  | 5. Hex locknut |
| 3. Bolt           |                |

5. Tighten the large hex locknut on the lower frame.
6. Install the frame cover.



**Notes:**

**Notes:**

# Declaration of Incorporation

Model No.	Serial No.	Product Description	Invoice Description	General Description	Directive
30658	None and Up	CE Guard Kit	CE KIT 60 SD DECK W/FRENCH GUARD	Guard Kit	2006/42/EC, 2000/14/EC

Relevant technical documentation has been compiled as required per Part B of Annex VII of 2006/42/EC.

We will undertake to transmit, in response to requests by national authorities, relevant information on this partly completed machinery. The method of transmission shall be electronic transmittal.

This machinery shall not be put into service until incorporated into approved Toro models as indicated on the associated Declaration of Conformity and in accordance with all instructions, whereby it can be declared in conformity with all relevant Directives.

Certified:



John Heckel  
Sr. Engineering Manager  
8111 Lyndale Ave. South  
Bloomington, MN 55420, USA  
October 3, 2018

Authorized Representative:

Marcel Dutrieux  
Manager European Product Integrity  
Toro Europe NV  
Nijverheidsstraat 5  
2260 Oevel  
Belgium

Tel. +32 16 386 659



**Count on it.**