



Count on it.

Form No. 3373-260 Rev D

Parts Catalog

Heater Kit

Liquid-Cooled Workman® MD/HD Utility Vehicle

Model No. 07349—Serial No. 312000001 and Up



Ordering Replacement Parts

To order replacement parts, please supply the part number, the quantity, and the description of each part desired.

Understanding Reference Numbers

Each identified part in an illustration has a reference number. The reference number for a part also appears in the parts list, along with other information about the part.

This catalog uses two special reference number formats, one to indicate parts in a service assembly and another to indicate the quantity of a given part in an illustration.

Service Assembly Reference Numbers

Parts in service assemblies have reference numbers in the form a:b. The a represents the reference number of the entire service assembly and the b represents a sequential number unique to each part within the service assembly.

For example, a wheel assembly might be identified by reference number 6, the tire by 6:1, the valve by 6:2, and the wheel by 6:3. When you order the assembly identified by reference number 6, you receive all parts identified by reference numbers 6:1, 6:2, and 6:3. However, you may also order any part individually. Reference numbers of this type appear in illustration and in parts lists.

Reference Numbers Indicating Quantity

In an illustration, if a reference number indicates more than one part, the reference number has the form nX y. The n represents the quantity of the part, the X is the multiplication symbol, and the y represents the reference number.

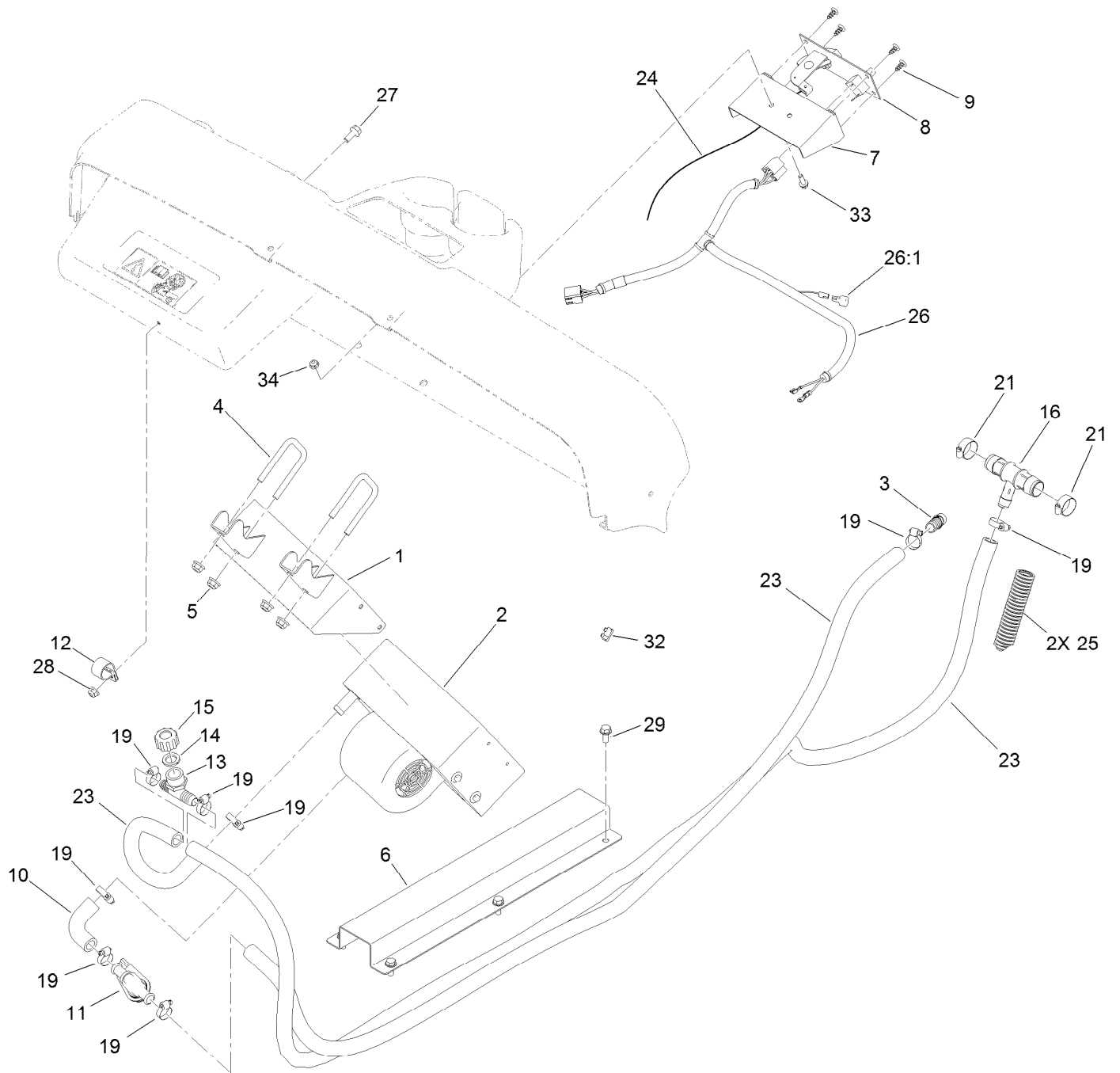
For example, in an illustration, the reference number 2X 37 means that two of the parts identified by reference number 37 are indicated.

Contents

MD Heater Kit Assembly 4

HD Heater Kit Assembly 6

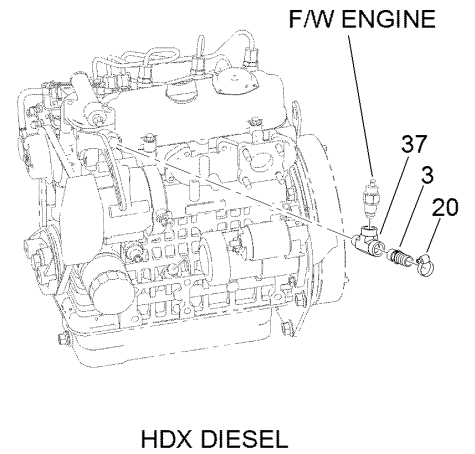
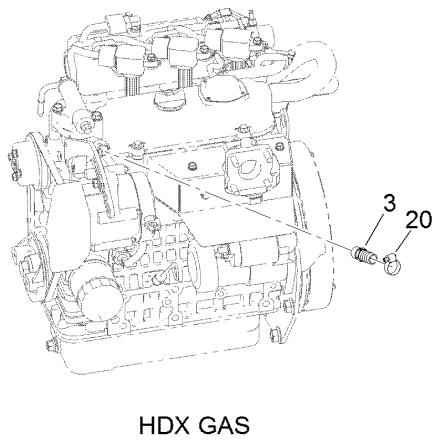
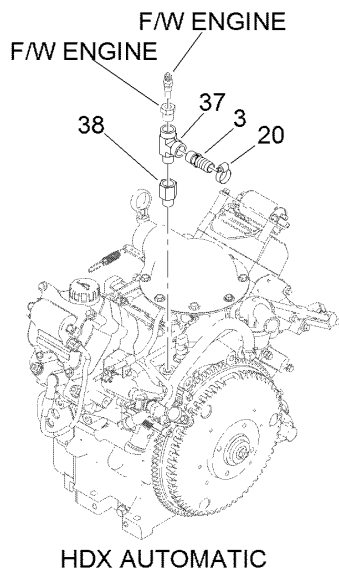
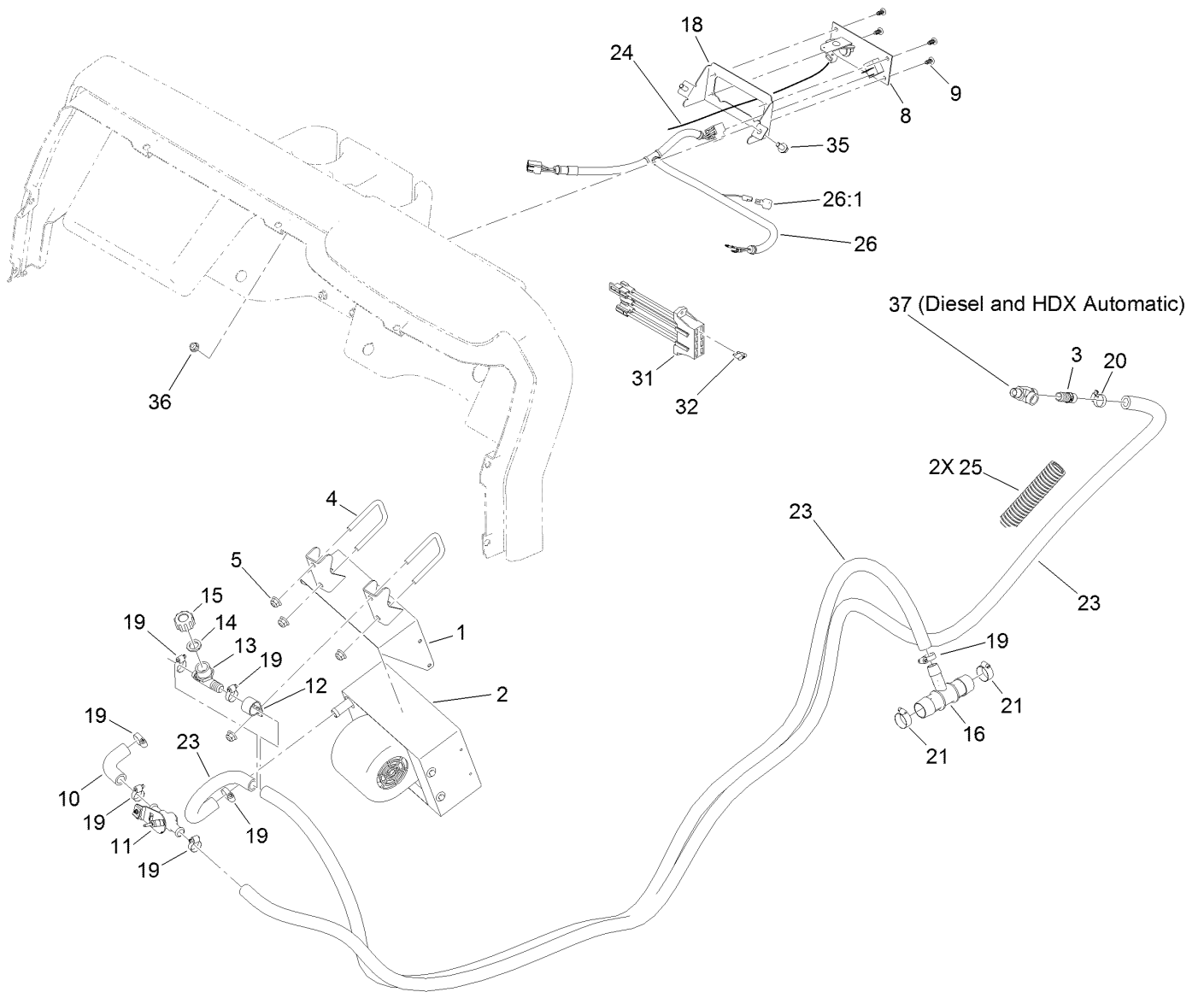
MD Heater Kit Assembly



MD Heater Kit Assembly (continued)

<i>Ref.</i>	<i>Part Number</i>	<i>Qty.</i>	<i>Description</i>	<i>Ref.</i>	<i>Part Number</i>	<i>Qty.</i>	<i>Description</i>
1	120-4939-03	1	Heater Mount ASM	16	120-4971	1	Fitting-Tee
2	120-4945	1	Heater ASM	19	2412-129	8	Clamp-Hose
3	117-9410	1	Fitting-Straight	21	2412-34	2	Clamp-Hose
4	104-6673	2	U-Bolt	23	120-4931	2	Hose-Coolant
5	104-8301	4	Nut-HF, NI	24	120-5035	1	Cable-Control, Heater
6	120-4934-03	1	Channel-Hose	25	120-5047	2	Conduit-Corregated
7	120-4949-03	1	Mount-Control, Heater	26	120-3996	1	Harness-Wire
8	120-4946	1	Panel-Control, Heater	26:1	100-4918	1	Diode
9	117-1092	4	Screw-PTH	27	110-5053	1	Screw-HHF
10	120-4936	1	Hose-Heater, 90 DEG	28	104-8300	1	Nut-HF, NI
11	120-4947	1	Valve-Heater	29	32144-11	6	Screw-Thd Roll, HWH
12	2412-39	1	Clamp-R	32	109101	1	Fuse-Blade, 20 Amp
13	120-4968	1	Fitting-Tee	33	115-5103	2	Screw-HHF
14	120-4970	1	Gasket	34	104-7201	2	Nut-HF
15	120-4969	1	Fitting-Cap				

HD Heater Kit Assembly



HD Heater Kit Assembly (continued)

<i>Ref.</i>	<i>Part Number</i>	<i>Qty.</i>	<i>Description</i>	<i>Ref.</i>	<i>Part Number</i>	<i>Qty.</i>	<i>Description</i>
1	120-4939-03	1	Heater Mount ASM	19	2412-129	8	Clamp-Hose
2	120-4945	1	Heater ASM	20	2412-36	2	Clamp-Hose
3	117-9410	1	Fitting-Straight	21	2412-34	2	Clamp-Hose
4	104-6673	2	U-Bolt	23	120-4931	2	Hose-Coolant
5	104-8301	4	Nut-HF, NI	24	120-5035	1	Cable-Control, Heater
8	120-4946	1	Panel-Control, Heater	25	120-5047	2	Conduit-Corregated
9	117-1092	4	Screw-PTH	26	120-3996	1	Harness-Wire
10	120-4936	1	Hose-Heater, 90 DEG	26:1	100-4918	1	Diode
11	120-4947	1	Valve-Heater	31	92-2641	1	Block-Fuse
12	2412-39	1	Clamp-R	32	109101	1	Fuse-Blade, 20 Amp
13	120-4968	1	Fitting-Tee	35	3234-5	2	Screw-HHF
14	120-4970	1	Gasket	36	104-8300	2	Nut-HF, NI
15	120-4969	1	Fitting-Cap	37	121-6331	1	Fitting-Tee
16	120-4971	1	Fitting-Tee	38	138-9276	1	Adapter-Straight
18	121-6295-03	1	Mount-Control, Heater				



Count on it.