



# Door Mount Mirror Kit

Workman® GTX, HDX, and MD Utility Vehicles or Outcross Traction Unit with Cab

Model No. 136-1997

## Installation Instructions

# Installation

## Loose Parts

Use the chart below to verify that all parts have been shipped.

Procedure	Description	Qty.	Use
<b>1</b>	No parts required	–	Prepare the machine.
<b>2</b>	Left mirror mount Right mirror mount Left handle gasket Right handle gasket Side mirror arm assembly Rearview mirror arm assembly Flange-head screw (6 x 16 mm)	1 1 1 1 2 2 4	Install the mirror mounts.

# 1

## Preparing the Machine

No Parts Required

## Preparing the Machine

Workman GTX, HDX, and MD

1. Park the machine on a level surface.
2. Engage the parking brake.
3. Shut off the engine and remove the key from the key switch.

## Preparing the Machine

Outcross 9060

1. Park the machine on a level surface.
2. Shift to the NEUTRAL position.
3. Lower any equipped attachments.
4. Engage the parking brake.
5. Shut off the engine and remove the key.



# 2

## Installing the Mirror Mounts

### Parts needed for this procedure:

1	Left mirror mount
1	Right mirror mount
1	Left handle gasket
1	Right handle gasket
2	Side mirror arm assembly
2	Rearview mirror arm assembly
4	Flange-head screw (6 x 16 mm)

### Procedure

1. Remove the bolts, support plate, and nuts that secure the latch assembly to the handle mount (Figure 1).

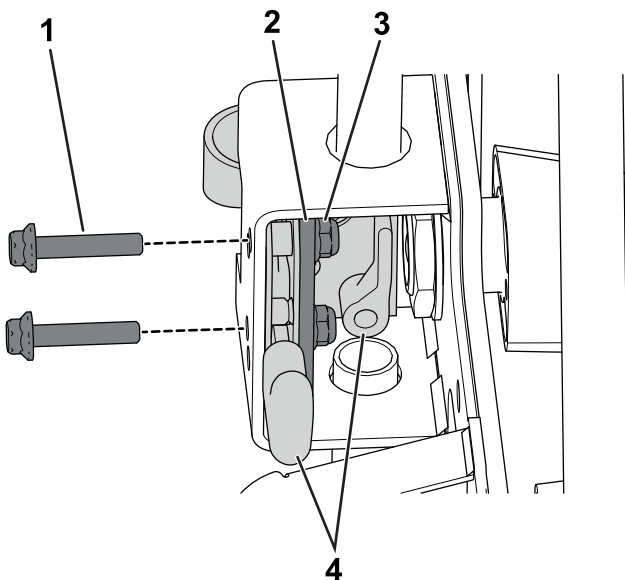


Figure 1

1. Bolt
2. Support plate
3. Nut
4. Latch assembly

2. Remove the latch assembly from the handle mount.
3. Remove the mounting nut, washer, flange-head screw (6 x 25 mm), 2 spacers, and 2 grommets from the door handle, and remove the door handle (Figure 2).

**Note:** Retain the door handle, mounting nut, washer, 2 spacers, and flange-head screw (6 x 25 mm).

**Note:** Discard the large and small grommets.

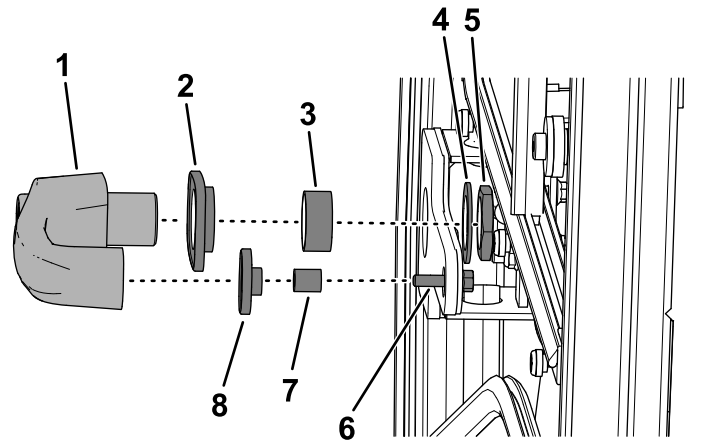


Figure 2

1. Door handle
2. Large grommet
3. Large spacer
4. Washer
5. Mounting nut
6. Flange-head screw (6 x 25 mm)
7. Small spacer
8. Small grommet

4. Adhere the handle gasket to the mirror mount (Figure 3).

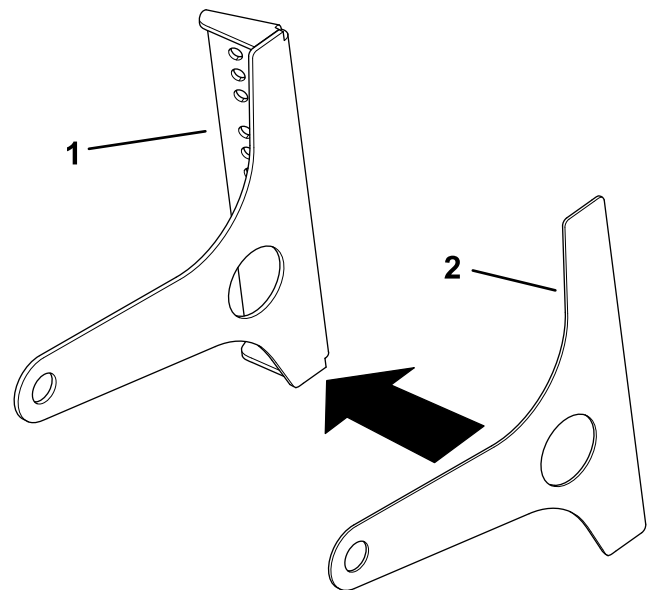
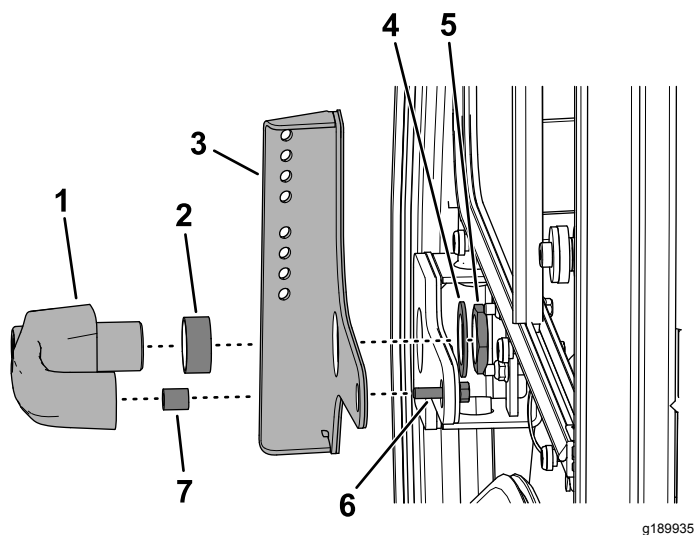


Figure 3

1. Mirror mount
2. Handle gasket

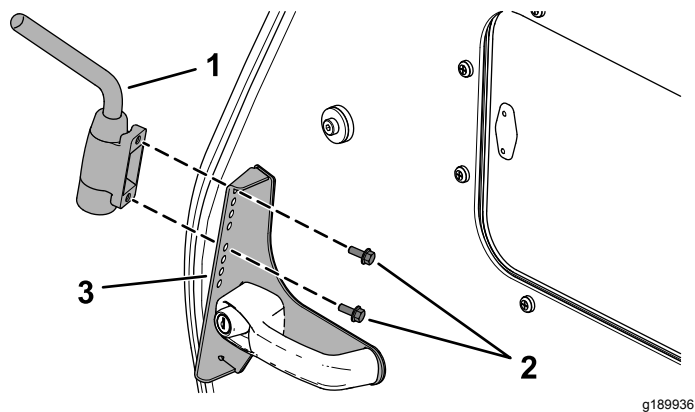
5. Install the door handle using the adhered mirror mount and the previously removed mounting nut, washer, flange-head bolt (6 x 25 mm), and 2 spacers (Figure 4).



**Figure 4**

- |                         |                                 |
|-------------------------|---------------------------------|
| 1. Door handle          | 5. Mounting nut                 |
| 2. Large spacer         | 6. Flange-head bolt (6 x 25 mm) |
| 3. Adhered mirror mount | 7. Small spacer                 |
| 4. Washer               |                                 |

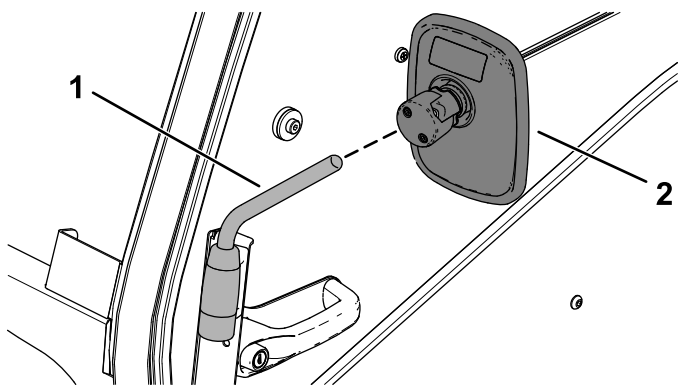
6. Install the latch assembly to the handle mount using the hardware that you removed in step 1; refer to [Figure 1](#).
7. Install the mirror arm to the top holes of the mirror mount using 2 flange-head screws (6 x 16 mm) as shown in [Figure 5](#).



**Figure 5**

- |                                   |                 |
|-----------------------------------|-----------------|
| 1. Mirror arm                     | 3. Mirror mount |
| 2. Flange-head screws (6 x 16 mm) |                 |

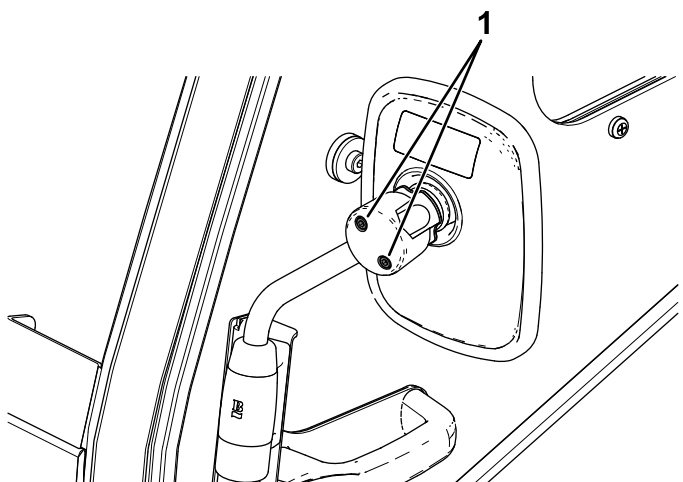
8. Slide the mirror onto the mirror arm, and adjust the mirror to your desired angle ([Figure 6](#)).



**Figure 6**

- |               |           |
|---------------|-----------|
| 1. Mirror arm | 2. Mirror |
|---------------|-----------|

9. Tighten the screws on the back of the mirror to secure the mirror to the mirror arm ([Figure 7](#)).



**Figure 7**

- |           |
|-----------|
| 1. Screws |
|-----------|

10. Repeat this procedure on the other side of the machine.



**Count on it.**