



Count on it.

Parts Catalog

Rear Roller Brush Kit

Reelmaster® 3550 Series 18-Inch Cutting Unit

Model No. 03916



Ordering Replacement Parts

To order replacement parts, please supply the part number, the quantity, and the description of each part desired.

Understanding Reference Numbers

Each identified part in an illustration has a reference number. The reference number for a part also appears in the parts list, along with other information about the part.

This catalog uses two special reference number formats, one to indicate parts in a service assembly and another to indicate the quantity of a given part in an illustration.

Service Assembly Reference Numbers

Parts in service assemblies have reference numbers in the form a:b. The a represents the reference number of the entire service assembly and the b represents a sequential number unique to each part within the service assembly.

For example, a wheel assembly might be identified by reference number 6, the tire by 6:1, the valve by 6:2, and the wheel by 6:3. When you order the assembly identified by reference number 6, you receive all parts identified by reference numbers 6:1, 6:2, and 6:3. However, you may also order any part individually. Reference numbers of this type appear in illustration and in parts lists.

Reference Numbers Indicating Quantity

In an illustration, if a reference number indicates more than one part, the reference number has the form nX y. The n represents the quantity of the part, the X is the multiplication symbol, and the y represents the reference number.

For example, in an illustration, the reference number 2X 37 means that two of the parts identified by reference number 37 are indicated.

Contents

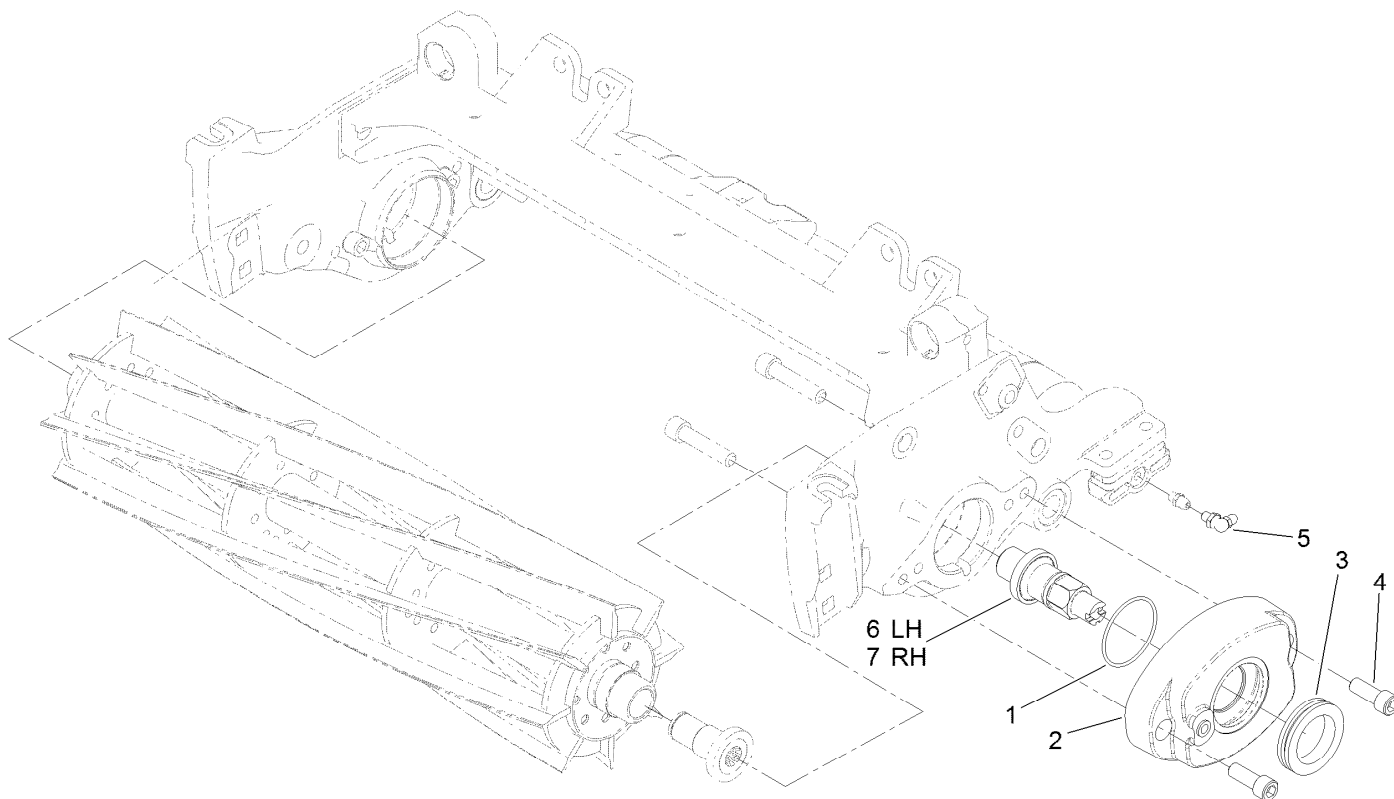
Drive Assembly 4

Roller Brush Assembly 5

Plate Assembly 6

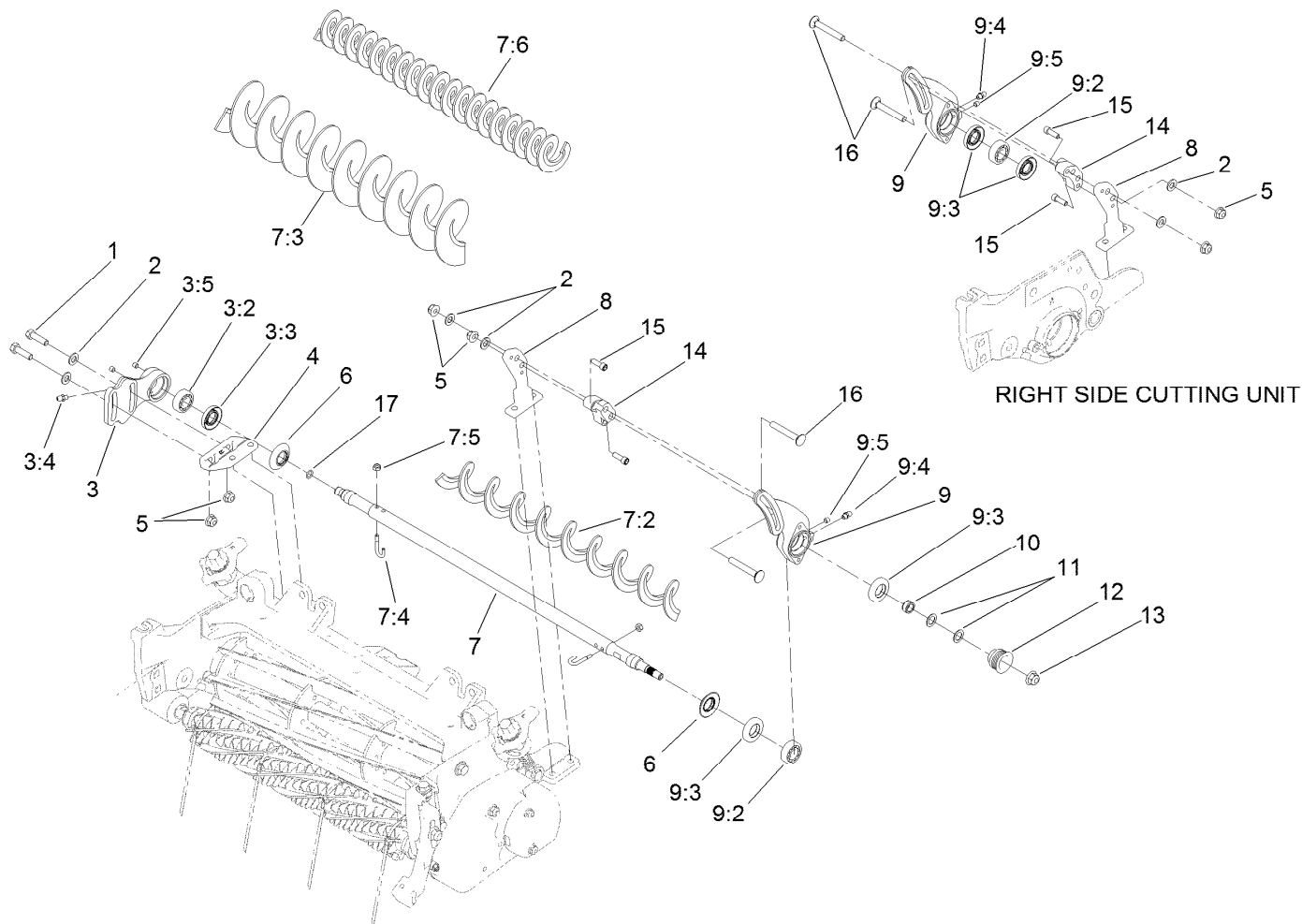
Rear Bumper Assembly 7

Front Bumper Assembly 8



Drive Assembly

Ref.	Part Number	Qty.	Description
1	112-6968	5	O-Ring
2	121-6960-03	5	Housing-Bearing, Drive
3	240-7	5	Grommet-Rubber
4	3274-7	10	Screw-HSH
5	104-1843	5	Fitting-Grease, 90 DEG
6	125-2788	3	Shaft-Drive, LH
7	125-2787	2	Shaft-Drive, RH



Roller Brush Assembly

Ref.	Part Number	Qty.	Description
1	322-16	10	Screw-HH
2	94-6936	20	Washer-Hardened
3	120-5148	5	Non-Driven Bearing Housing ASM
3:2	95-0707	1	Bearing-Aligning, Self
3:3	106-8530	1	Seal-Grease
3:4	302-5	1	Fitting-Grease
3:5	108-0989	2	Screw-Set
4	108-4480	5	Bracket-Mounting
5	104-8300	20	Nut-HF, NI
6	108-4172	10	Seal-Excluder
7	120-5142	5	Roller Brush ASM
7:2	120-5144	1	Brush-Roller
7:3	121-3199	1	Brush-Roller (High HOC) ●
7:4	105-9632	2	Bolt-J
7:5	3296-2	2	Nut-Lock, NI

Ref.	Part Number	Qty.	Description
7:6	137-0843	1	Brush-Roller, Rear (HD) ●
8	120-9955	5	Bracket-Mounting, RRB
9	125-2789	3	LH Brush Bracket ASM
9	125-2790	2	RH Brush Bracket ASM
9:2	95-0707	1	Bearing-Aligning, Self
9:3	106-8530	2	Seal-Grease
9:4	302-5	1	Fitting-Grease
9:5	108-0989	1	Screw-Set
10	120-9979	5	Spacer-Pulley, Driven
11	112-6957	10	Washer-Hardened
12	115-0821	5	Pulley-Driven, RRB (5-Rib)
13	104-8301	5	Nut-HF, NI
14	121-6958	5	Spacer Brush Kit
15	3274-8	10	Screw-HSH
16	3230-7	10	Bolt-CARR
17	107-8844	5	O-Ring

● Optional Equipment

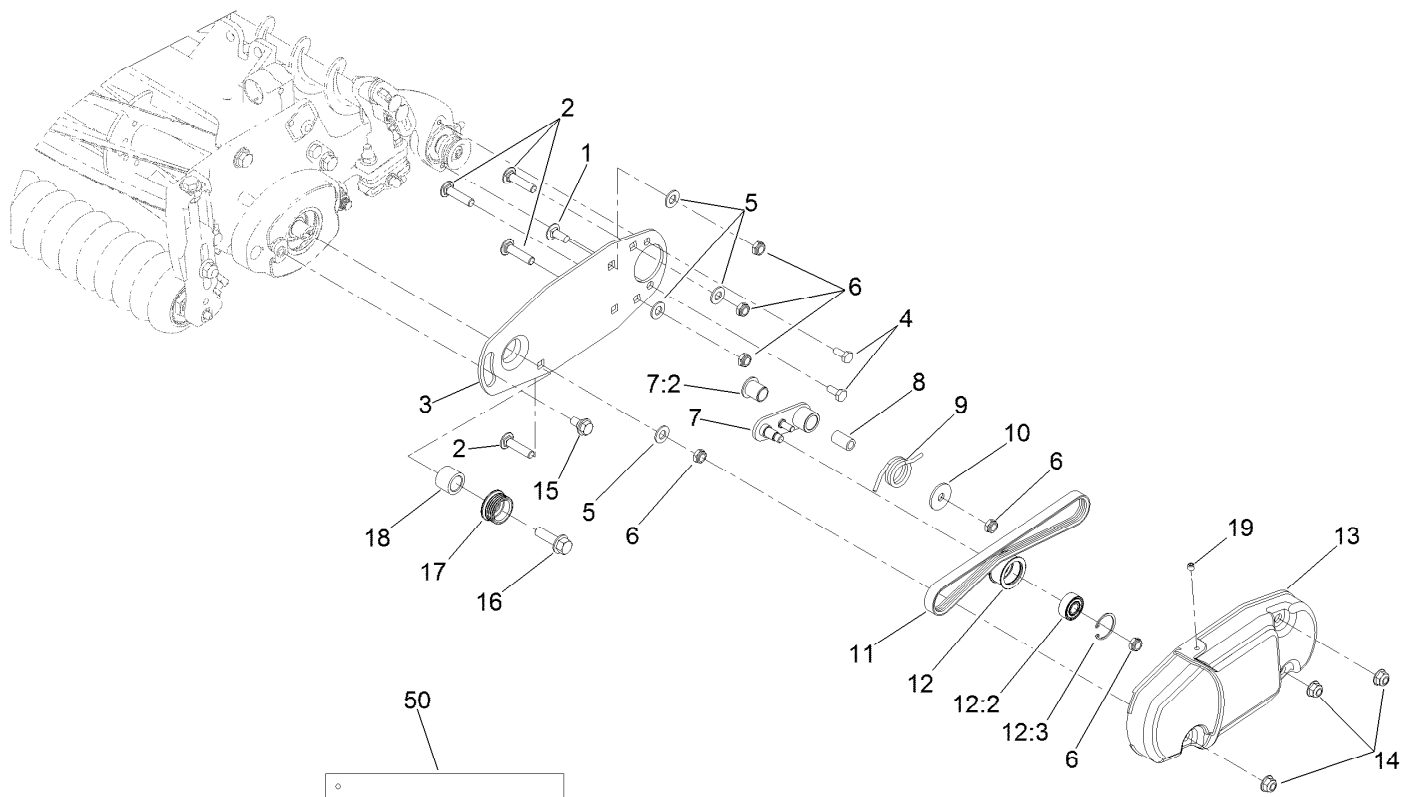
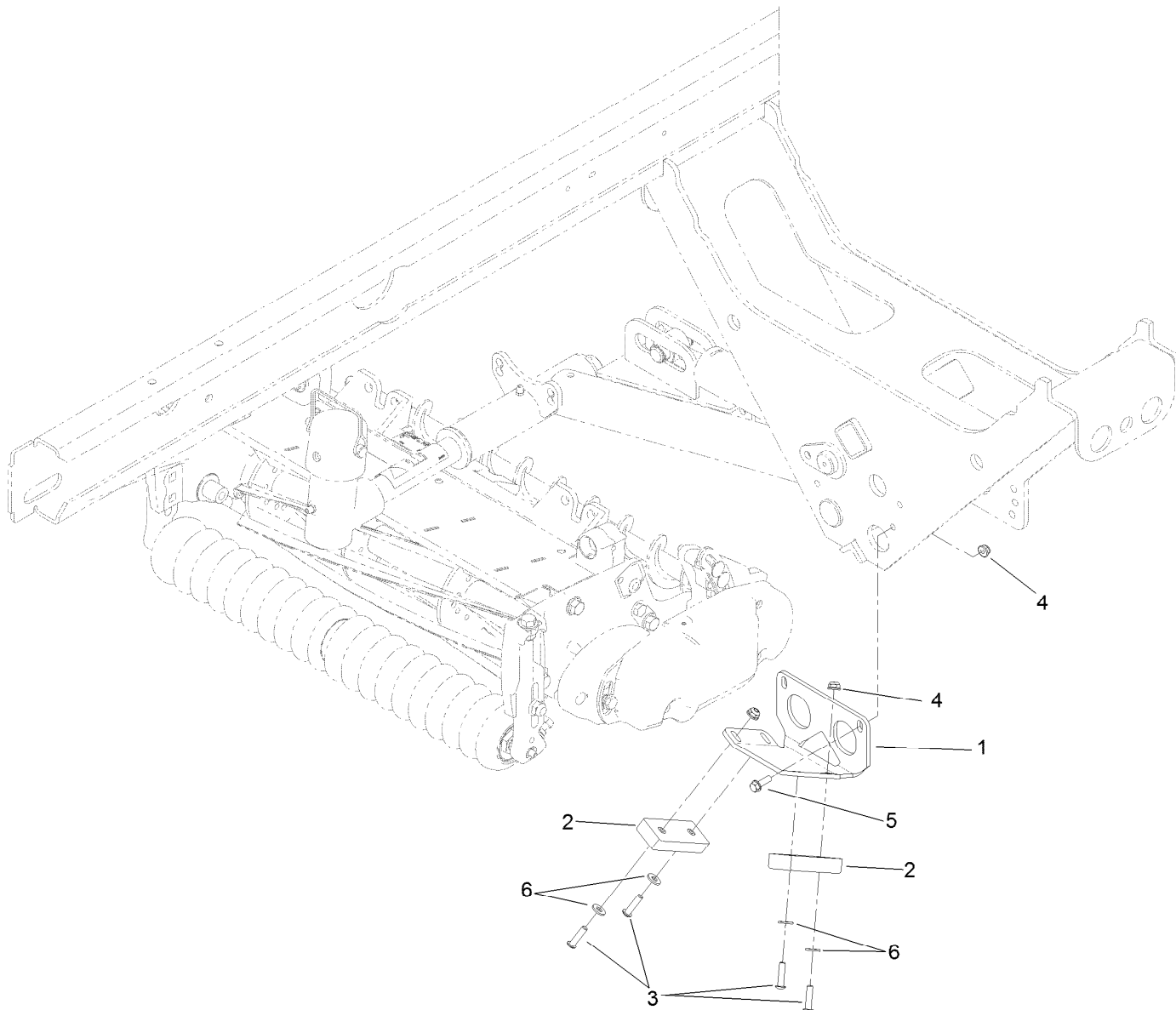


Plate Assembly
(LH Assembly Shown)

Plate Assembly

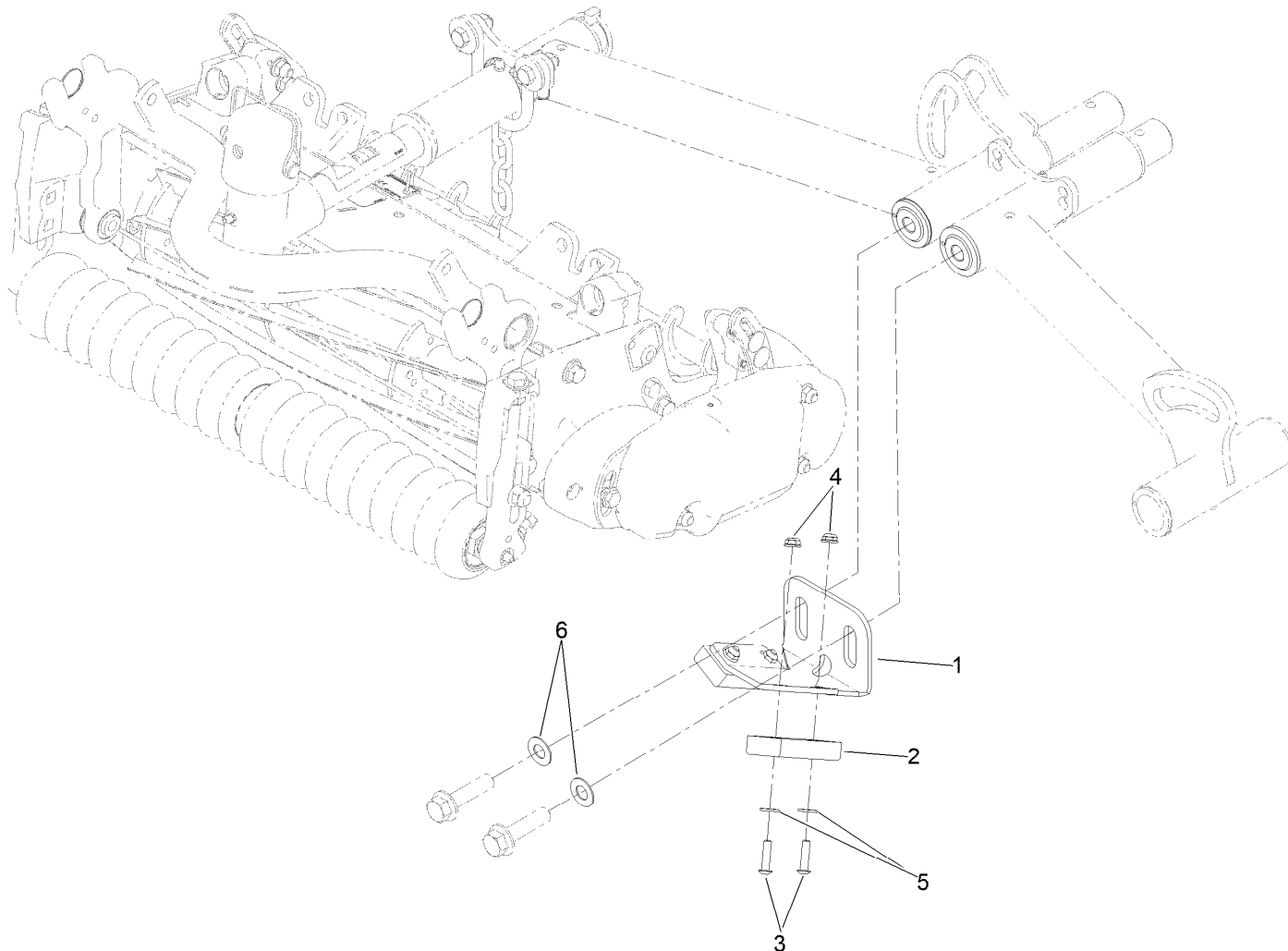
Ref.	Part Number	Qty.	Description	Ref.	Part Number	Qty.	Description
1	3230-23	5	Screw-CARR	12	114-9397	5	Idler Pulley ASM
2	112-6950	20	Screw-CARR	12:2	110-1701	1	Bearing
3	120-7231-03	5	Plate-Brush	12:3	32151-60	1	Ring-Snap
4	321-3	10	Screw-HH	13	120-9956-03	5	Cover-Brush
5	3256-45	20	Washer-Flat	14	104-8300	15	Nut-HF, NI
6	3296-47	30	Nut-Lock, NI	15	27-0411	5	Screw-Shoulder
7	115-0834	5	Idler Arm ASM	16	110-5050	5	Screw-HHF
7:2	125-8775	1	Bushing-Flange	17	121-3162	5	Pulley-Driver, Fairway RRB
8	115-0826	5	Spacer-Idler	18	108-4477	5	Spacer
9	115-0839	5	Spring-Idler	19	108-0989	5	Screw-Set
10	5-4460	5	Washer-Pivot	50	114-5446	1	Tool-Alignment ●
11	115-0894	5	Belt-Brush, 5 Inch (5-Rib)				

● Optional Equipment



Rear Bumper Assembly

Ref.	Part Number	Qty.	Description
1	121-7885-03	1	Bracket-Bumper, Rear
2	86-5350	2	Bumper-Rubber
3	3274-65	4	Screw-HSBH
4	104-7201	6	Nut-HF
5	32105-15	2	Screw-HWH
6	3256-22	4	Washer-Flat



Front Bumper Assembly

Ref.	Part Number	Qty.	Description
1	132-7143-03	1	Plate-Bumper, Front
2	86-5350	2	Bumper-Rubber
3	3274-65	4	Screw-HSBH
4	104-7201	4	Nut-HF
5	3256-22	4	Washer-Flat
6	3-6803	2	Washer-Adjusting

Notes:

Notes:

Notes:



Count on it.