



Count on it.

Parts Catalog

**Rear Roller Brush and Groomer
Kit**

**Reelmaster® 3550 Series 18-inch Cutting
Unit**

Model No. 03917



Ordering Replacement Parts

To order replacement parts, please supply the part number, the quantity, and the description of each part desired.

Understanding Reference Numbers

Each identified part in an illustration has a reference number. The reference number for a part also appears in the parts list, along with other information about the part.

This catalog uses two special reference number formats, one to indicate parts in a service assembly and another to indicate the quantity of a given part in an illustration.

Service Assembly Reference Numbers

Parts in service assemblies have reference numbers in the form a:b. The a represents the reference number of the entire service assembly and the b represents a sequential number unique to each part within the service assembly.

For example, a wheel assembly might be identified by reference number 6, the tire by 6:1, the valve by 6:2, and the wheel by 6:3. When you order the assembly identified by reference number 6, you receive all parts identified by reference numbers 6:1, 6:2, and 6:3. However, you may also order any part individually. Reference numbers of this type appear in illustration and in parts lists.

Reference Numbers Indicating Quantity

In an illustration, if a reference number indicates more than one part, the reference number has the form nX y. The n represents the quantity of the part, the X is the multiplication symbol, and the y represents the reference number.

For example, in an illustration, the reference number 2X 37 means that two of the parts identified by reference number 37 are indicated.

Contents

Drive Assembly 4

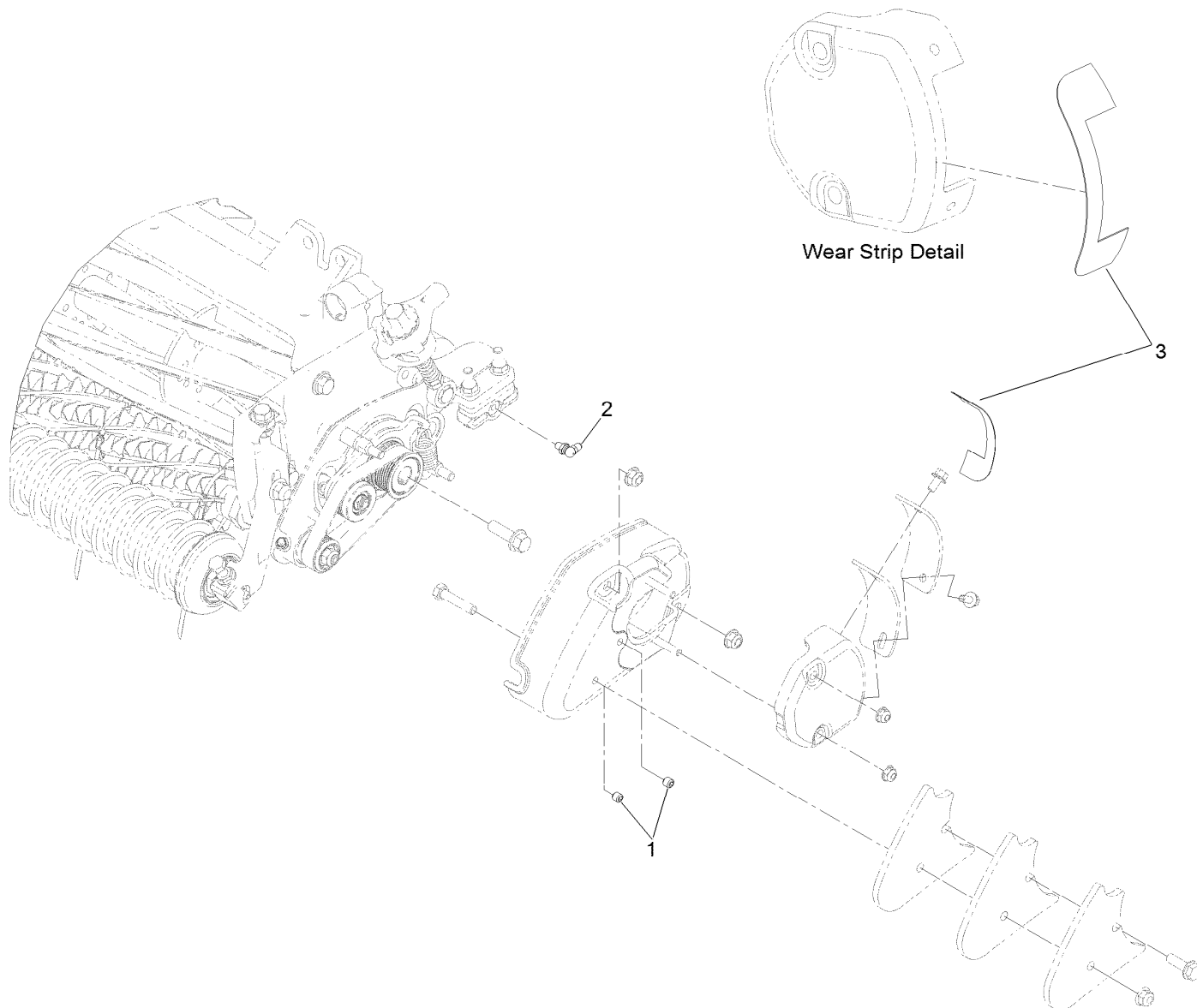
Roller Brush Assembly 5

Plate Assembly 6

Cover Kit Assembly No. 133-0170 7

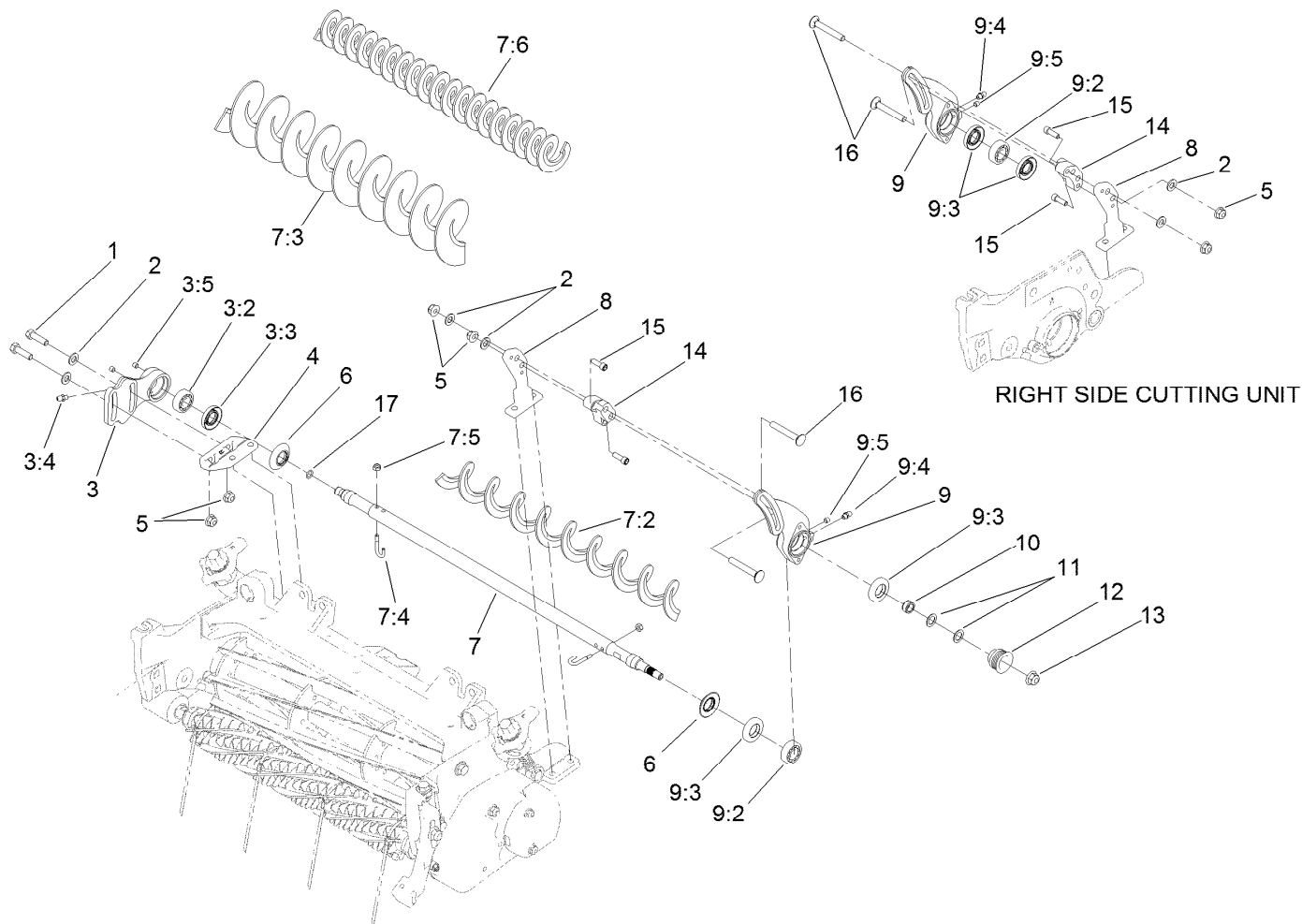
Rear Bumper Assembly 8

Front Bumper Assembly 9



Drive Assembly

Ref.	Part Number	Qty.	Description
1	3246-2	10	Screw-Set, HSH
2	104-1843	5	Fitting-Grease, 90 DEG
3	130-4736	5	Strip-Wear Groomer/RRB



Roller Brush Assembly

Ref.	Part Number	Qty.	Description	Ref.	Part Number	Qty.	Description
1	322-16	10	Screw-HH	7:6	137-0843	1	Brush-Roller, Rear (HD) ●
2	94-6936	20	Washer-Hardened	8	120-9955	5	Bracket-Mounting, RRB
3	120-5148	5	Non-Driven Bearing Housing ASM	9	125-2789	3	LH Brush Bracket ASM
3:2	95-0707	1	Bearing-Aligning, Self	9	125-2790	2	RH Brush Bracket ASM
3:3	106-8530	1	Seal-Grease	9:2	95-0707	1	Bearing-Aligning, Self
3:4	302-5	1	Fitting-Grease	9:3	106-8530	2	Seal-Grease
3:5	108-0989	2	Screw-Set	9:4	302-5	1	Fitting-Grease
4	108-4480	5	Bracket-Mounting	9:5	108-0989	1	Screw-Set
5	104-8300	20	Nut-HF, NI	10	120-9979	5	Spacer-Pulley, Driven
6	108-4172	10	Seal-Excluder	11	112-6957	10	Washer-Hardened
7	120-5142	5	Roller Brush ASM	12	115-0821	5	Pulley-Driven, RRB (5-Rib)
7:2	120-5144	1	Brush-Roller	13	104-8301	5	Nut-HF, NI
7:3	121-3199	1	Brush-Roller (High HOC) ●	14	121-6958	5	Spacer Brush Kit
7:4	105-9632	2	Bolt-J	15	3274-8	10	Screw-HSH
7:5	3296-2	2	Nut-Lock, NI	16	3230-7	10	Bolt-CARR
				17	107-8844	5	O-Ring

● Optional Equipment

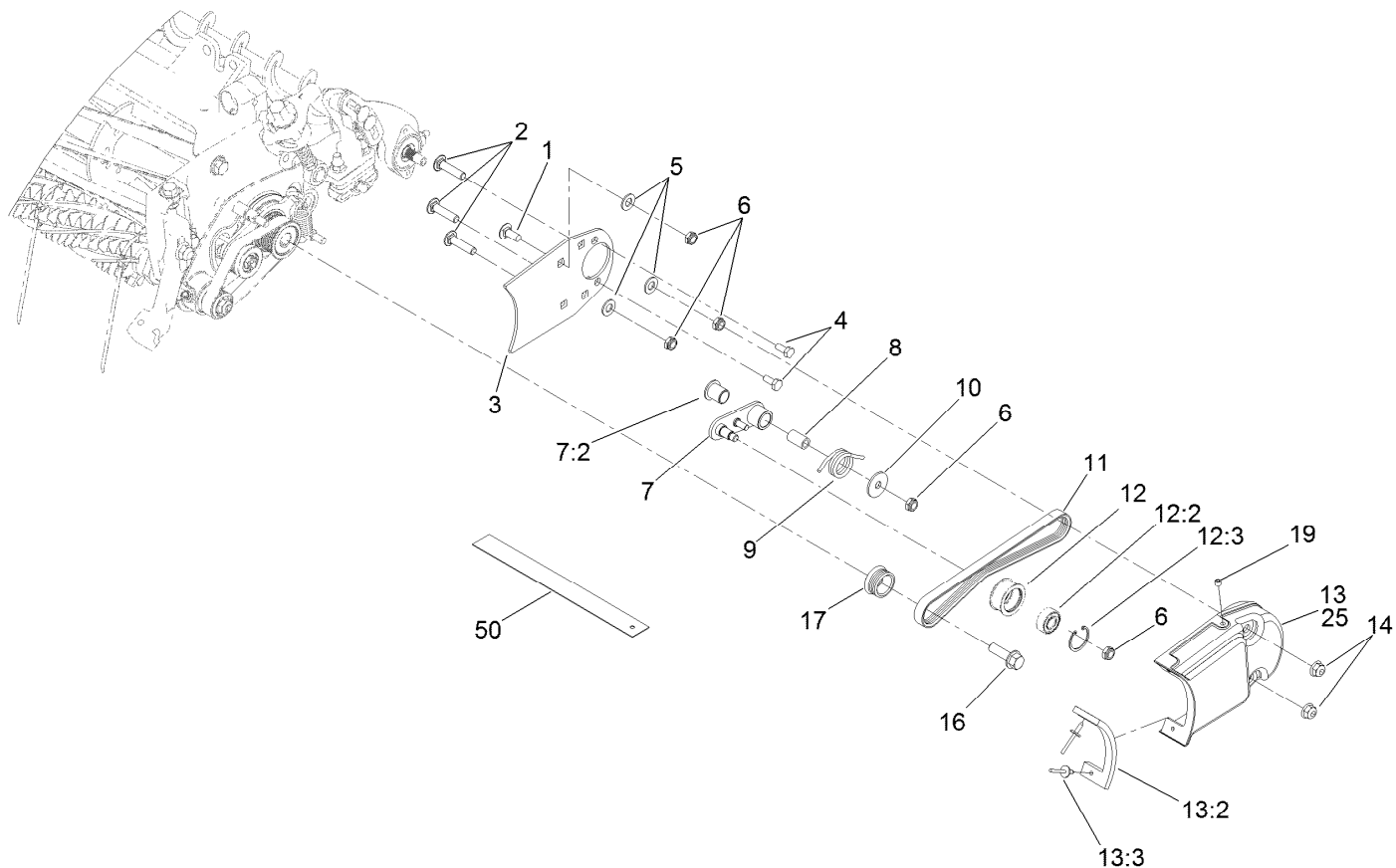
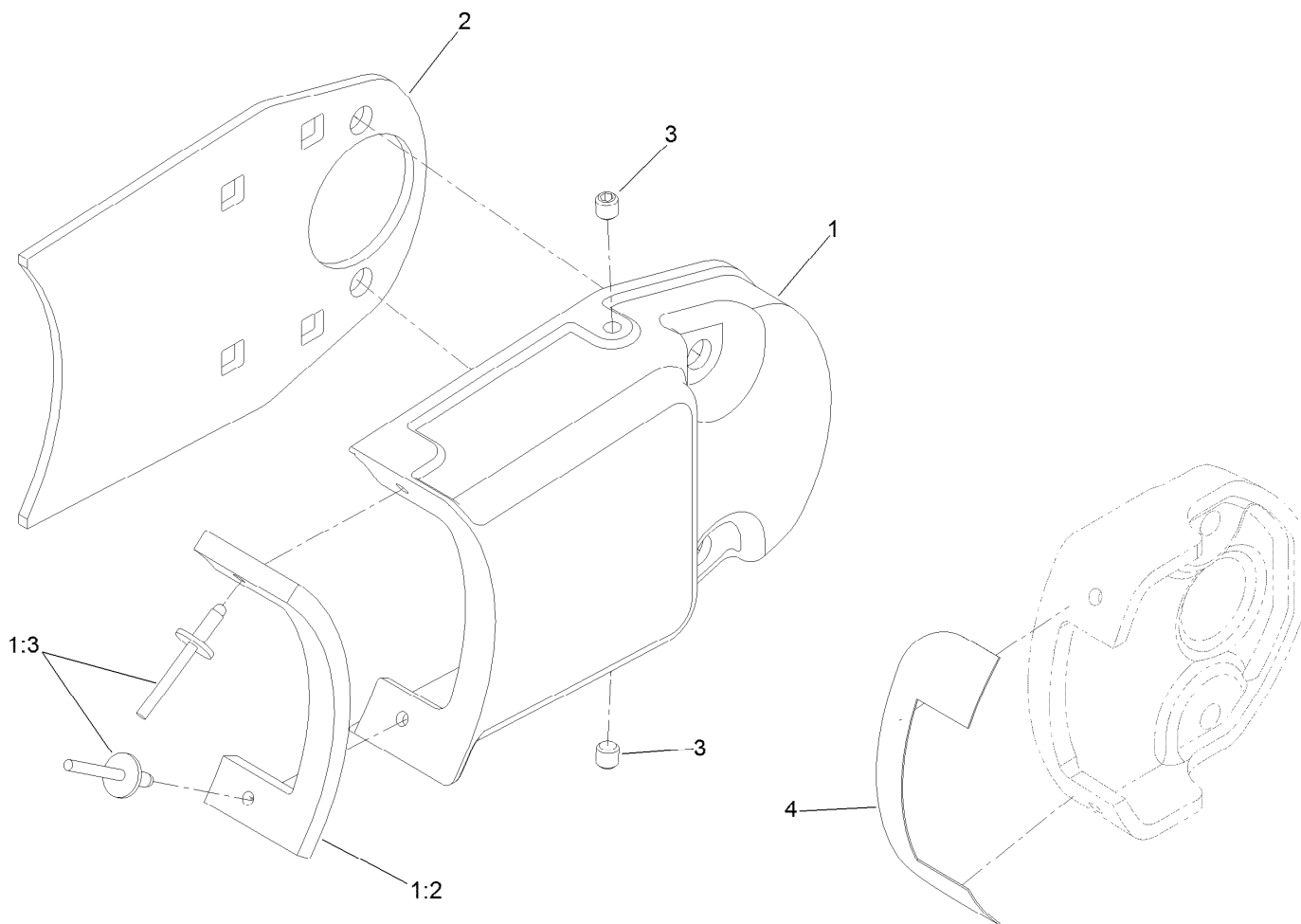


Plate Assembly

Ref.	Part Number	Qty.	Description
1	3230-23	5	Screw-CARR
2	112-6950	15	Screw-CARR
3	133-0145-03	5	Plate-Brush, Short (18 Inch)
4	321-3	10	Screw-HH
5	3256-45	15	Washer-Flat
6	3296-47	25	Nut-Lock, NI
7	115-0834	5	Idler Arm ASM
7:2	125-8775	1	Bushing-Flange
8	115-0826	5	Spacer-Idler
9	115-0839	5	Spring-Idler
10	5-4460	5	Washer-Pivot
11	115-0894	5	Belt-Brush, 5 Inch (5-Rib)

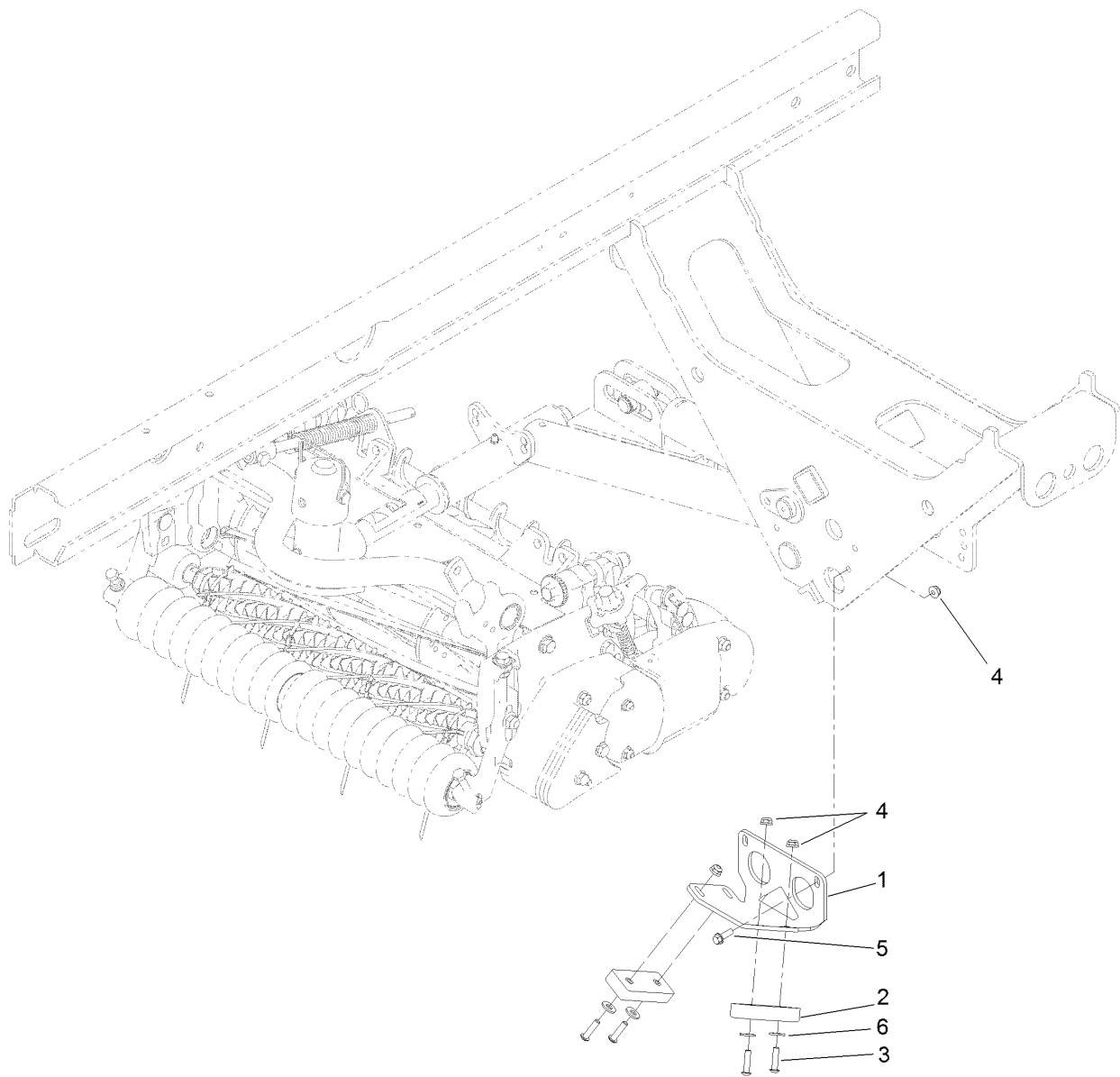
Ref.	Part Number	Qty.	Description
12	114-9397	5	Idler Pulley ASM
12:2	110-1701	1	Bearing
12:3	32151-60	1	Ring-Snap
13	133-0171	5	Brush/Groomer Cover ASM
13:2	130-4735	1	Gasket-Brush/Groomer
13:3	3269-5	2	Rivet-Pop
14	104-8300	10	Nut-HF, NI
16	110-5050	5	Screw-HHF
17	121-3162	5	Pulley-Driver, Fairway RRB
19	108-0989	5	Screw-Set
25	133-0170	1	Brush/Groomer Cover Kit
50	114-5446	1	Tool-Alignment ●

● Optional Equipment



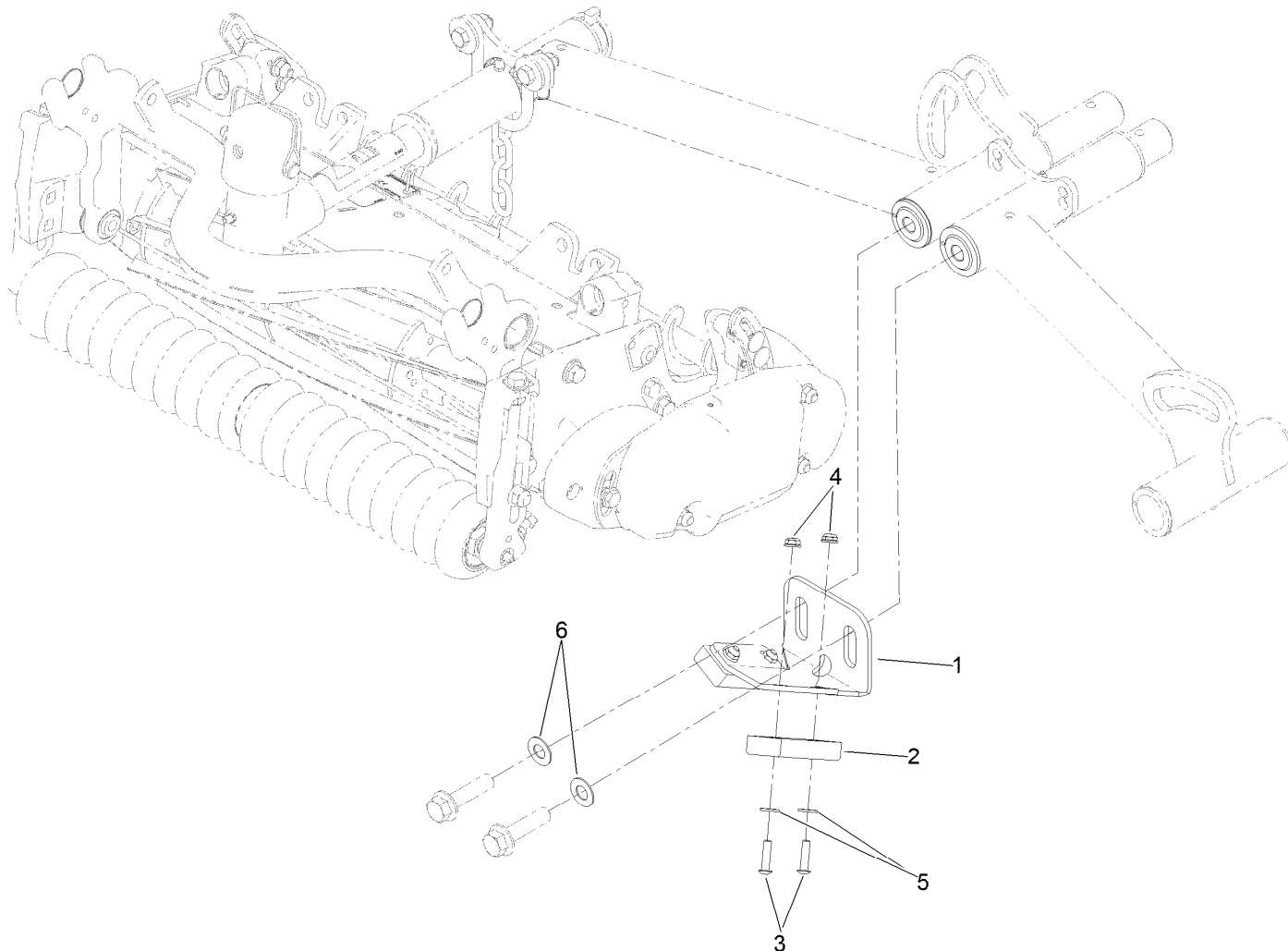
Cover Kit Assembly No. 133-0170

Ref.	Part Number	Qty.	Description
1	133-0171	1	Brush/Groomer Cover ASM
1:2	130-4735	1	Gasket-Brush/Groomer
1:3	3269-5	2	Rivet-Pop
2	133-0145-03	1	Plate-Brush, Short (18 Inch)
3	108-0989	2	Screw-Set
4	130-4736	1	Strip-Wear Groomer/RRB



Rear Bumper Assembly

Ref.	Part Number	Qty.	Description
1	121-7885-03	1	Bracket-Bumper, Rear
2	86-5350	2	Bumper-Rubber
3	3274-65	4	Screw-HSBH
4	104-7201	6	Nut-HF
5	32105-15	2	Screw-HWH
6	3256-22	4	Washer-Flat



Front Bumper Assembly

Ref.	Part Number	Qty.	Description
1	132-7143-03	1	Plate-Bumper, Front
2	86-5350	2	Bumper-Rubber
3	3274-65	4	Screw-HSBH
4	104-7201	4	Nut-HF
5	3256-22	4	Washer-Flat
6	3-6803	2	Washer-Adjusting

Notes:

Notes:



Count on it.