



36" Tiller

Model No. 79375 – 9900001 & Up

Parts Catalog

ORDERING REPLACEMENT PARTS

To order replacement parts, please supply: the part number, the quantity, and the description of each part desired.

Contents

Description	Page	Description	Page
Shield & Tine Assembly	1	Toro Part Number Index	6-7
Hitch Assembly	2	Maintenance	8-9
Pulley Box Assembly	3		
Jackshaft Assembly	4		
Mounting Assembly	5		

Note:

Part Description Abbreviations

Part descriptions in this catalog may include the following abbreviations.

Abbreviation	Meaning	Abbreviation	Meaning
AR	as required	HWHTF	hex washer head
ASM	assembly		thread forming
CARR	carriage	INC	incorporated
DEG	degrees	LH	left hand
FH	flat head	PH	pan head
GA	gauge	PPH	Phillips pan head
HF	hex flange	PTO	power take off
HFV	hex flange washer	RH	right hand
HH	hex head	SFH	slotted fillister head
HHF	hex head flange	SH	square head
HHST	hex head self tapping	SHWH	slotted hex washer head
HJ	hex jam	SPH	slotted pan head
HOC	height-of-cut	STD	standard
HS	hex socket	TAP	self tapping
HSBH	hex socket button head	TH	truss head
HSFH	hex socket flat head	TTH	Torx truss head
HSR	hex socket head	WH	wing head
HWH	hex washer head		

Important Format Explanations

This catalog uses special formats to convey information in illustrations and parts lists. Specifically, one format is used in conjunction with service assemblies and another with quantities associated with reference numbers.

Service Assemblies

Parts within service assemblies have reference numbers in the form X:Y. X is the reference number of the service assembly and Y is a sequential number unique to each part within the service assembly.

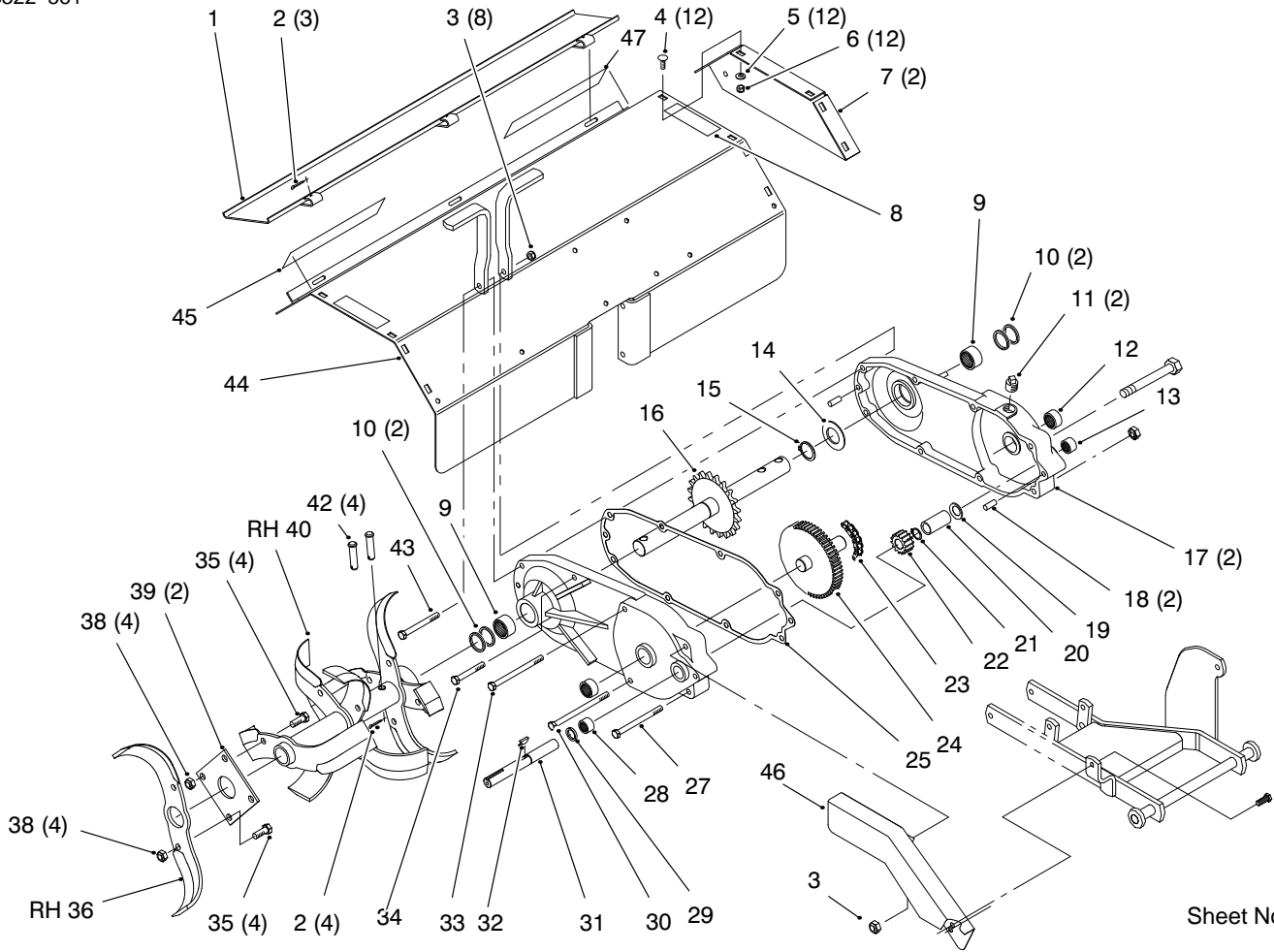
For example, a wheel assembly might be identified by reference number 6, the tire by 6:1, the valve by 6:2, and the wheel by 6:3. When you order the assembly identified by reference number 6, you receive all parts identified by reference numbers 6:1, 6:2, and 6:3. However, you may also order any part individually.

Reference numbers of this type appear in part lists and as callouts in illustrations.

Reference Numbers with Quantities

Illustrations may have a quantity in parentheses next to a reference number, in the form $X (Y)$. X is the reference number. Y in parentheses is the quantity of the part identified by the reference number.

For example, the illustration callout 4 (2) indicates that two parts are used in that instance.

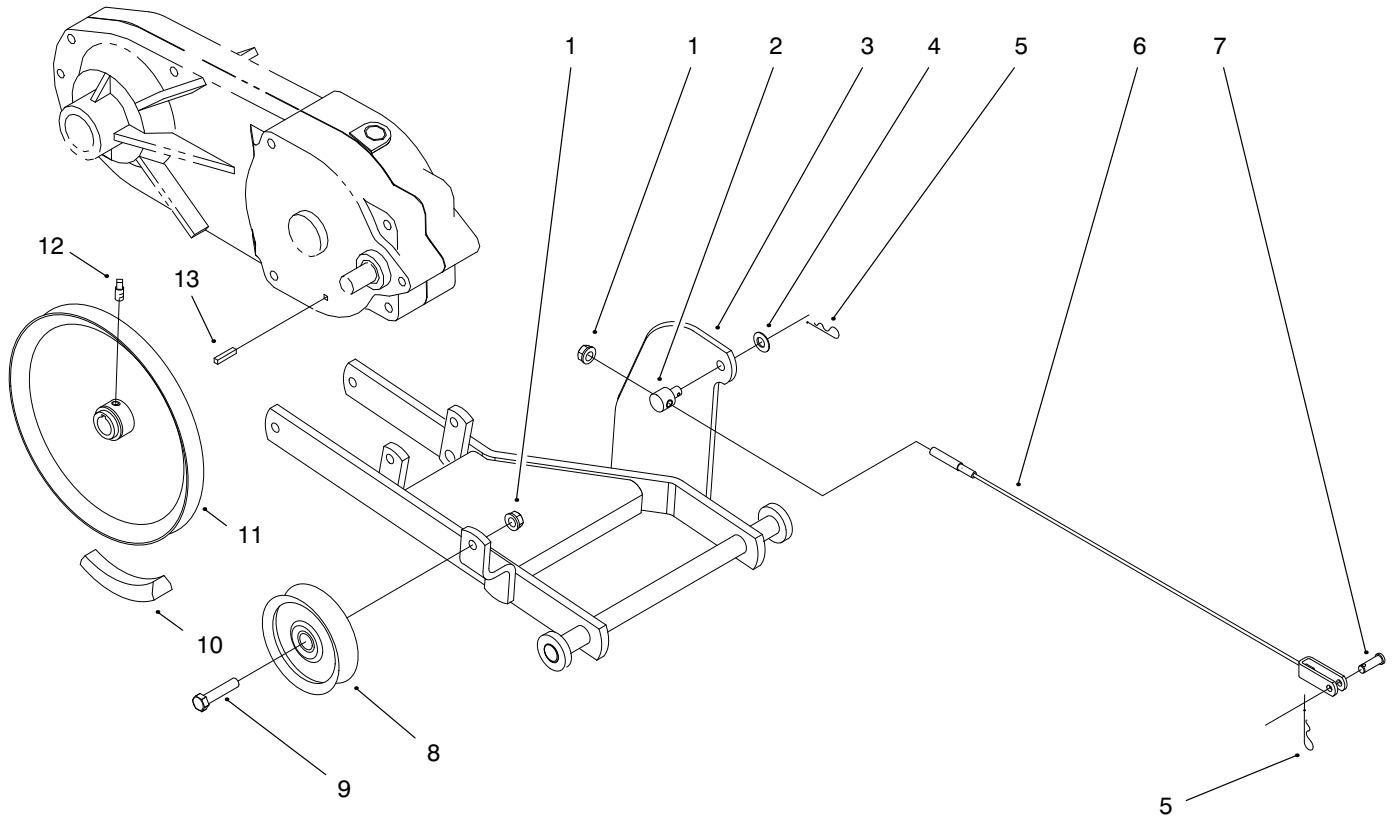


Sheet No.:2

Shield & Tine Assembly

Ref. No.	Part No.	Qty.	Description
1	93-1609-01	1	Panel
2	3272-11	7	Pin-Cotter
3	3296-39	8	Nut-Lock
4	3230-1	12	Bolt-CARR
5	3256-23	12	Washer-Flat
6	3296-29	12	Nut-Lock
7	93-1605-01	2	Cover-End
8	92-7112	2	Decal-Danger
9	6838	2	Bearing-Needle
10	103118	4	Seal-Oil
11	281-3	2	Plug-Pipe
12	1532	2	Bearing-Needle
13	1529	1	Bearing-Needle
14	106011	2	Washer-Flat
15	32120-33	2	Ring-Retaining
16	106009	1	Shaft And Sprocket
17	93-1600-01	2	Gearcase-Half
18	32121-41	2	Pin-Roll
19	1535	1	Washer-Thrust
20	83-3340	1	Tube-Spacer
21	32120-72	1	Ring-Retaining
22	3528	1	Gear-Pinion
23	6848	1	Chain-Sprocket
24	106007	1	Shaft And Sprocket
25	83-3330	1	Gasket-Transmission
26	323-42	1	Screw-HH

Ref. No.	Part No.	Qty.	Description
27	323-23	1	Screw-HH
28	1540	1	Bearing-Needle
29	100441	1	Seal-Oil
30	323-25	1	Screw-HH
31	104387	1	Shaft-Input
32	3257-5	1	Key-Woodruff
33	323-21	1	Screw-HH
34	323-13	3	Screw-HH
35	324-4	8	Screw-HH
36	92-1653-03	1	Tine-RH
37	93-1604-01	1	Tine-LH
38	3296-48	8	Nut-Lock
39	93-1601-01	2	Plate-Mounting
40	93-1602-03	1	Tine-RH
41	93-1603-03	1	Tine-LH
42	9208	4	Pin-Clevis
43	323-15	1	Screw-HH
44	92-6514-01	1	Shield w/ Safety Decal
45	92-8748	1	Decal-Attachment
46	93-9279-01	1	Guard-Tiller
47	94-9158	1	Decal-Workhorse



Sheet No.:3

Hitch Assembly

Ref. No.	Part No.	Qty.	Description
1	3296-39	2	Nut-Lock
2	101161	1	Trunnion
3	94-7880	1	Hitch
4	3256-24	1	Washer-Flat
5	9335044	2	Hairpin
6	100-1584	1	Cable-Lift ASM
7	283-1	1	Pin-Clevis
8	92-7104	1	Pulley-Idler
9	323-9	1	Screw-HH
10	98-8706	1	Belt-V
11	93-0345	1	Pulley
12	3242-2	2	Screw Set-SH
13	1005	1	Key-Square

Ref. No.	Part No.	Qty.	Description

Toro Part Number Index

Part No.	Page No.	Ref. No.	Qty.	Description
1005	2	13	1	Key-Square
1529	1	13	1	Bearing-Needle
1532	1	12	2	Bearing-Needle
1535	1	19	1	Washer-Thrust
1540	1	28	1	Bearing-Needle
3528	1	22	1	Gear-Pinion
6135	4	20	1	Spring-Extension
6838	1	9	2	Bearing-Needle
6848	1	23	1	Chain-Sprocket
9208	1	42	4	Pin-Clevis
100441	1	29	1	Seal-Oil
101161	2	2	1	Trunnion
101851	3	13	1	Knob-Adjustment
103118	1	10	4	Seal-Oil
104387	1	31	1	Shaft-Input
106007	1	24	1	Shaft And Sprocket
106009	1	16	1	Shaft And Sprocket
106011	1	14	2	Washer-Flat
108571	3	11	1	Washer-Spring
110567	4	4	2	Flange-Relube w/Zerk
110568	4	5	2	Flange-Plain w/O Zerk
110569	4	6	2	Bearing & Collar
933156	3	12	1	Pin-Spirol
937089	4	10	2	Key-Woodruff
9335044	2	5	2	Hairpin
9335044	5	2	2	Hairpin
19-1470	3	15	1	Bolt-Shoulder
83-3330	1	25	1	Gasket-Transmission
83-3340	1	20	1	Tube-Spacer
92-1653-03	1	36	1	Tine-RH
92-6514-01	1	44	1	Shield w/ Safety Decal
92-7084	2	8	1	Pulley-Idler
92-7104	4	18	1	Pulley-Idler
92-7112	1	8	2	Decal-Danger
92-8748	1	45	1	Decal-Attachment
93-0345	2	11	1	Pulley
93-1600-01	1	17	2	Gearcase-Half
93-1601-01	1	39	2	Plate-Mounting
93-1602-03	1	40	1	Tine-RH
93-1603-03	1	41	1	Tine-LH
93-1604-01	1	37	1	Tine-LH
93-1605-01	1	7	2	Cover-End
93-1609-01	1	1	1	Panel
93-9279-01	1	46	1	Guard-Tiller
94-2287-03	3	17	1	Pulley Box
94-2288	3	10	1	Rod-Tension
94-2423	3	8	1	Pivot Rod
94-2447	3	4	1	Pulley-Idler
94-2449	3	7	1	Ferrule-Adjuster
94-2460	3	19	1	Spring-Extension
94-7764	3	14	1	Idler Tensioner
94-7799	3	6	1	Idler Lever
94-7838	3	2	1	Idler Arm
94-7840	4	7	1	Shaft-Jack
94-7841	4	8	1	Pulley-Driven
94-7842	4	15	1	Pulley-V
94-7876	4	2	1	Support-Jackshaft
94-7879	4	16	1	Idler Lever
94-7880	2	3	1	Hitch
94-9158	1	47	1	Decal-Workhorse
98-1644	4	14	2	Bushing-Flange
98-3095	3	3	1	Pulley-Idler

*Not Illustrated

Toro Part Number Index (cont.)

Part No.	Page No.	Ref. No.	Qty.	Description
98-8082	3	20	1	Decal-Belt Routing
98-8706	2	10	1	Belt-V
98-8707	4	9	1	Belt-V
100-1581	5	14	1	Guide-Cable
100-1584	2	6	1	Cable-Lift ASM
281-3	1	11	2	Plug-Pipe
283-1	2	7	1	Pin-Clevis
283-2	5	1	2	Pin-Clevis
302-5	4	13	1	Fitting-Grease
323-9	2	9	1	Screw-HH
323-9	3	5	2	Screw-HH
323-9	4	19	1	Screw-HH
323-13	1	34	3	Screw-HH
323-15	1	43	1	Screw-HH
323-21	1	33	1	Screw-HH
323-23	1	27	1	Screw-HH
323-25	1	30	1	Screw-HH
323-42	1	26	1	Screw-HH
324-4	1	35	8	Screw-HH
3230-1	1	4	12	Bolt-CARR
3230-1	4	11	6	Bolt-CARR
3242-2	2	12	2	Screw Set-SH
3242-2	4	1	4	Screw Set-SH
3256-23	1	5	12	Washer-Flat
3256-24	2	4	1	Washer-Flat
3257-5	1	32	1	Key-Woodruff
3272-11	1	2	7	Pin-Cotter
3296-29	1	6	12	Nut-Lock
3296-29	3	16	1	Nut-Lock
3296-29	4	3	6	Nut-Lock
3296-39	1	3	8	Nut-Lock
3296-39	2	1	2	Nut-Lock
3296-39	3	1	2	Nut-Lock
3296-39	4	17	1	Nut-Lock
3296-48	1	38	8	Nut-Lock
32120-33	1	15	2	Ring-Retaining
32120-46	4	12	1	Ring-Retaining
32120-72	1	21	1	Ring-Retaining
32121-41	1	18	2	Pin-Roll
32144-70	3	9	1	Screw-TAP
32152-9	3	18	1	Nut-Lock

