



# Access Backlap Kit

## Greensmaster®1018, 1021 or 1026 Mower

Model No. 139-4342

Form No. 3428-432 Rev A

### Installation Instructions

## Installation

### Installing the Access Backlap Kit

1. Park the machine on a level surface.
2. Engage the parking brake.
3. Shut off the engine and remove the key from the machine (if equipped).
4. Remove the plug from the top of the reel-drive assembly (Figure 1).

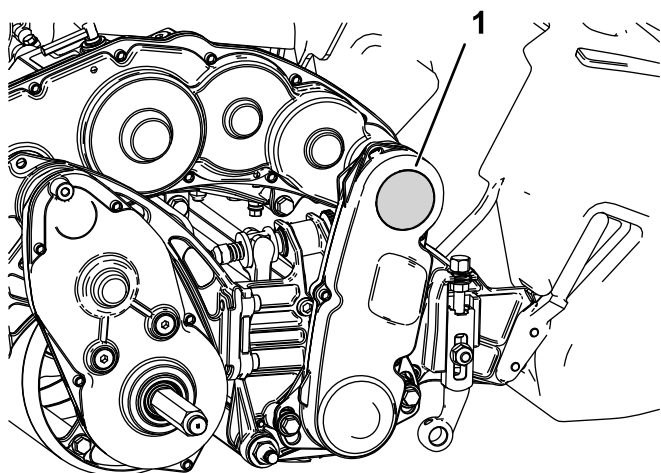
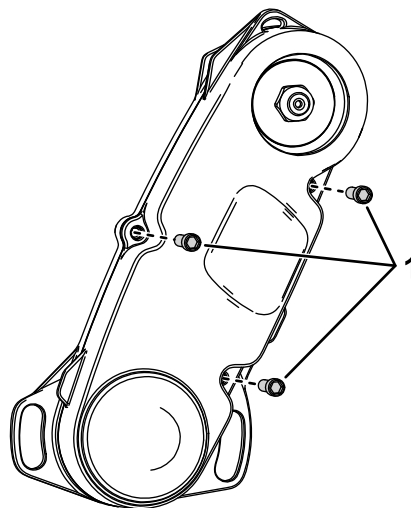


Figure 1

1. Remove this plug from the reel-drive assembly.

5. Remove the 3 bolts securing the reel drive cover and remove it (Figure 2).

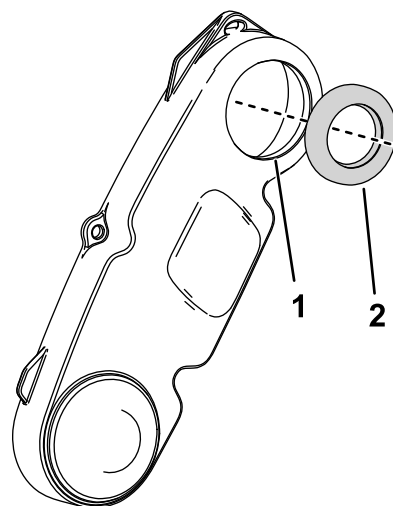


g284487

Figure 2

1. Remove the bolts securing the reel drive cover.

6. Press the seal flush into the front cover of the reel drive (Figure 3).



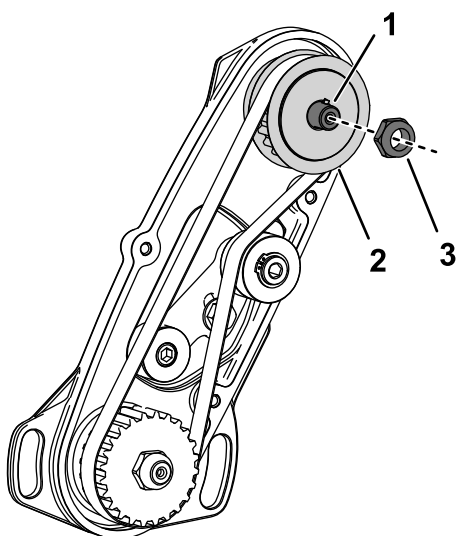
g284488

Figure 3

1. Lubricate this lip before pressing in the seal flush.
2. Seal



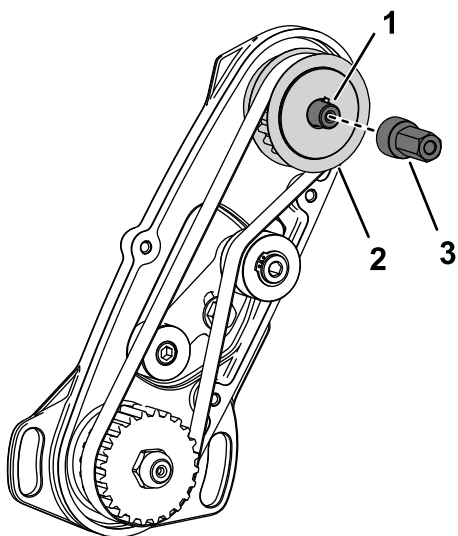
7. Remove the nut from the reel-drive shaft ([Figure 4](#)).



**Figure 4**

1. Reel-drive shaft  
2. Secure this pulley from movement.  
3. Nut

8. Install the backlap drive hub to the reel-drive shaft ([Figure 5](#)).

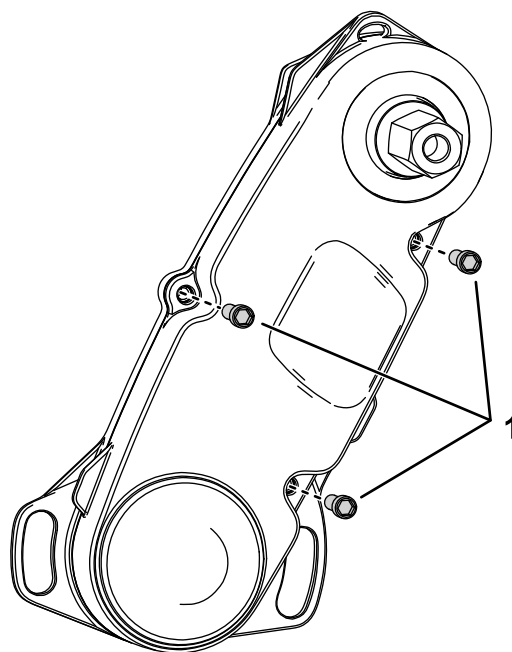


**Figure 5**

1. Reel-drive shaft  
2. Secure this pulley from movement.  
3. Backlap drive hub

9. While securing the drive pulley from movement, torque the backlap drive hub to 27 to 33 ft-lb (36.6 to 44.7 N·m).

10. Install the front cover to the reel-drive assembly with the bolts removed in step 5 ([Figure 6](#)).



**Figure 6**

1. Secure the reel drive cover.