



**Count on it.**

# Parts Catalog

## Triple Bagger Hopper Kit Groundsmaster® 360 and 7200 Series Traction Unit

Model No. 31211—Serial No. 402700001 and Up



# Ordering Replacement Parts

To order replacement parts, please supply the part number, the quantity, and the description of each part desired.

## Understanding Reference Numbers

Each identified part in an illustration has a reference number. The reference number for a part also appears in the parts list, along with other information about the part.

This catalog uses two special reference number formats, one to indicate parts in a service assembly and another to indicate the quantity of a given part in an illustration.

## Service Assembly Reference Numbers

Parts in service assemblies have reference numbers in the form a:b. The a represents the reference number of the entire service assembly and the b represents a sequential number unique to each part within the service assembly.

For example, a wheel assembly might be identified by reference number 6, the tire by 6:1, the valve by 6:2, and the wheel by 6:3. When you order the assembly identified by reference number 6, you receive all parts identified by reference numbers 6:1, 6:2, and 6:3. However, you may also order any part individually. Reference numbers of this type appear in illustration and in parts lists.

## Reference Numbers Indicating Quantity

In an illustration, if a reference number indicates more than one part, the reference number has the form nX y. The n represents the quantity of the part, the X is the multiplication symbol, and the y represents the reference number.

For example, in an illustration, the reference number 2X 37 means that two of the parts identified by reference number 37 are indicated.

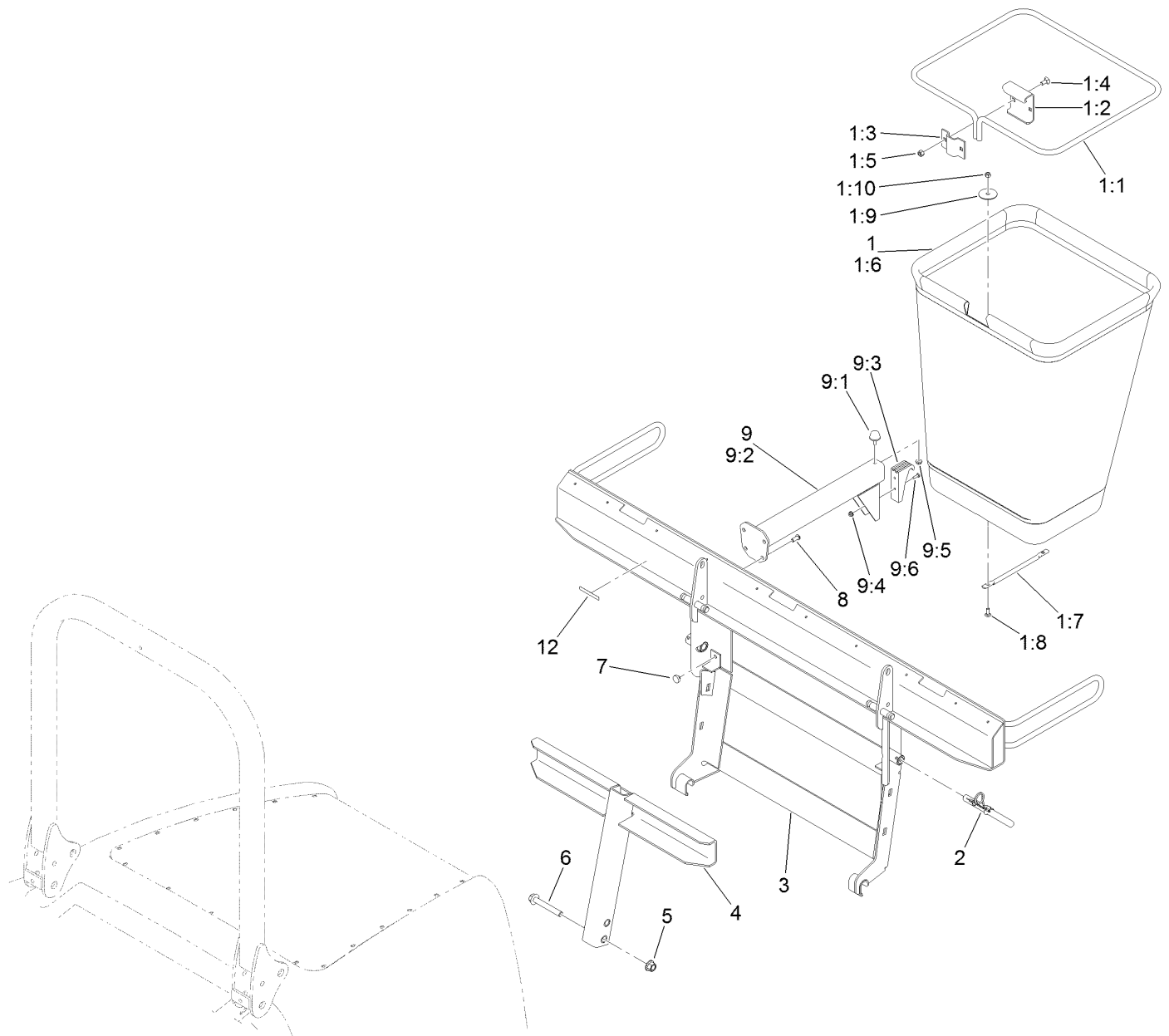
# Contents

Bag and Frame Assembly..... 4

Hood Assembly..... 6

Lower Tube and Upper Tube Assembly ..... 8

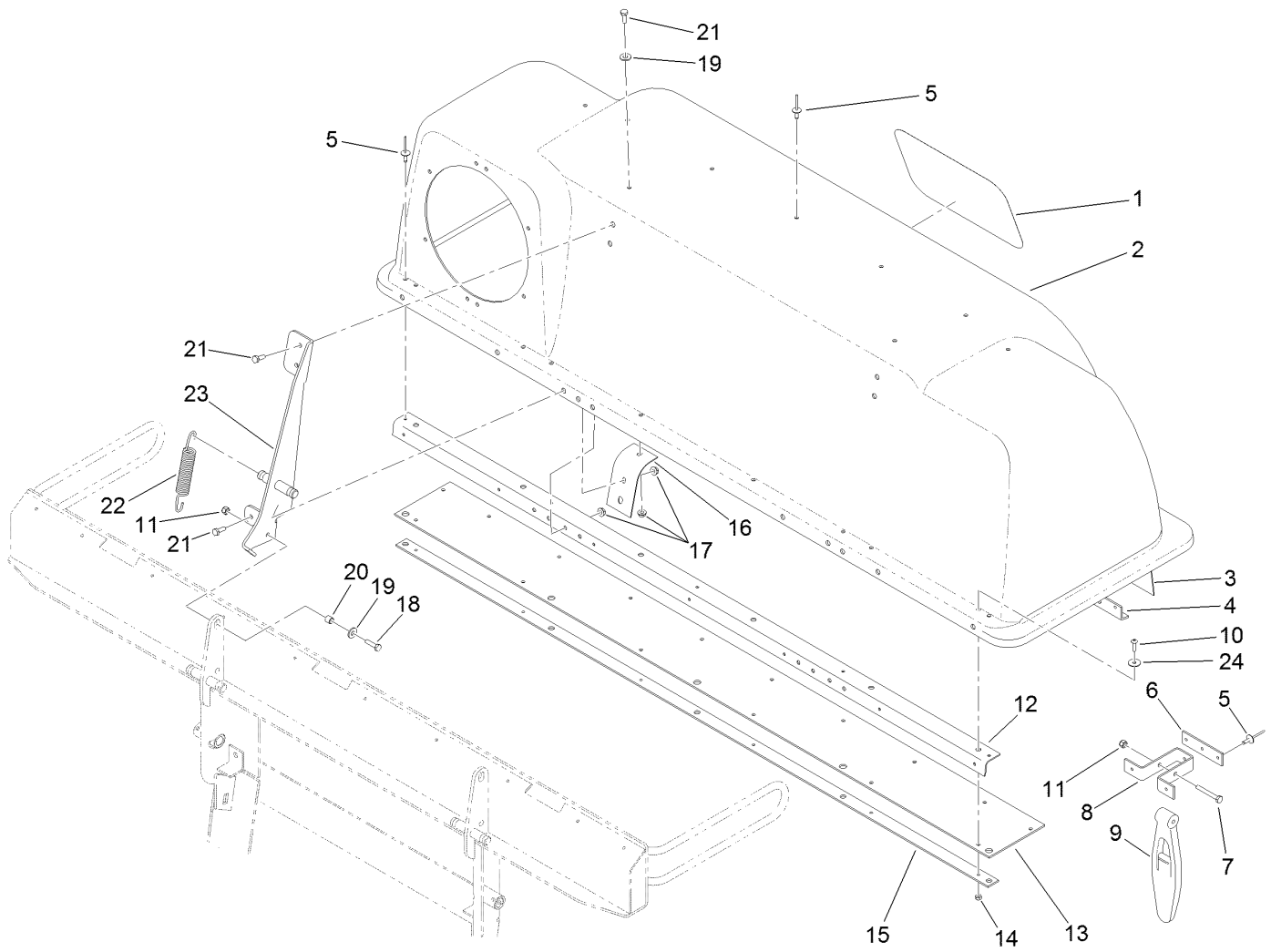
# Bag and Frame Assembly



## Bag and Frame Assembly (continued)

<i>Ref.</i>	<i>Part Number</i>	<i>Qty.</i>	<i>Description</i>	<i>Ref.</i>	<i>Part Number</i>	<i>Qty.</i>	<i>Description</i>
1	116-0754	3	Bag And Frame ASM	4	125-4420-03	1	Adapter
1:1	1-653529-03	1	Frame-Bag	5	99-5107	2	Nut-Lock
1:2	114973-03	1	Hanger-Bag	6	114-8419	2	Screw-HHF
1:3	114974-03	1	Clamp	7	1-513658	2	Bumper
1:4	3230-1	2	Bolt-CARR	8	3274-55	8	Screw-HSBH
1:5	3296-29	2	Nut-Lock, NI	9	103-5166	2	Bag Support ASM
1:6	116-0757	1	Bag	9:1	1-523420	1	Bumper
1:7	1-653566	1	Handle-Bag	9:2	103-5124-03	1	Support-Bag
1:8	3229-1	2	Bolt-CARR	9:3	1-653404	1	Catch
1:9	1-653036	2	Washer	9:4	3290-148	2	Nut-HF
1:10	3296-42	2	Nut-Lock, NI	9:5	32128-33	1	Nut-HF
2	116-0458	2	Pin-Mount, Bagger	9:6	3290-500	2	Screw-PPH
3	109-8706-03	1	Frame-Triple Bagger	12	133-8061	1	Decal-Warning

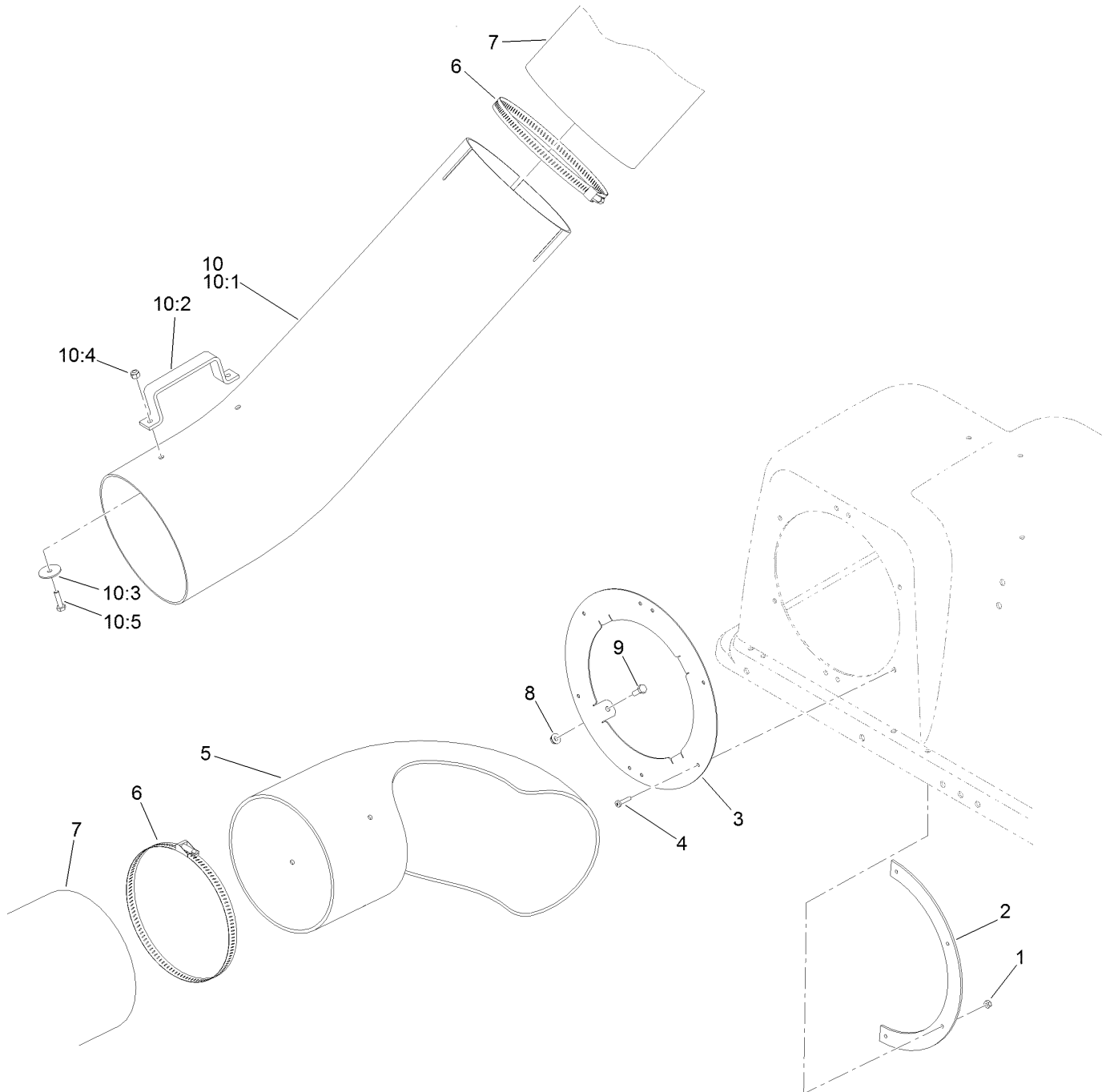
# Hood Assembly



## Hood Assembly (continued)

<i>Ref.</i>	<i>Part Number</i>	<i>Qty.</i>	<i>Description</i>	<i>Ref.</i>	<i>Part Number</i>	<i>Qty.</i>	<i>Description</i>
1	67-7310	1	Decal	14	3296-2	6	Nut-Lock, NI
2	110-3927	1	Hood-Bagger, Triple	15	103-0452-03	1	Plate-Backing
3	103-0440	1	Screen-Bagger	16	103-0391	2	Reinforcement-Hood, Bagger
4	103-0380-03	1	Support-Screen	17	32128-33	10	Nut-HF
5	114439	49	Rivet-Blind	18	321-6	2	Screw-HH
6	103-0376	2	Plate-Latch, Reinforcement	19	3256-2	4	Washer-Flat
7	321-11	2	Screw-HH	20	1-633545	2	Spacer
8	103-0379	2	Bracket-Mount	21	321-4	10	Screw-HH
9	1-653403	2	Latch	22	1-653544	4	Spring-Extension
10	3250-27	6	Screw-PPH	23	109-8351-03	2	Hinge
11	3296-42	4	Nut-Lock, NI	24	3256-61	21	Washer-Flat
12	103-0382-03	1	Stiffener-Bagger, Top				
13	103-0451	1	Seal-Hinge				

# Lower Tube and Upper Tube Assembly



## Lower Tube and Upper Tube Assembly (continued)

<i>Ref.</i>	<i>Part Number</i>	<i>Qty.</i>	<i>Description</i>
1	3296-2	8	Nut-Lock, NI
2	103-0378	2	Clamp-Seal
3	132-7975-03	1	Bracket-Nozzle, Bagger
4	3250-27	8	Screw-PPH
5	125-4433	1	Tube-Upper
6	VAC11400	2	Clamp
7	125-4432	1	Tube-Flexible
8	32128-33	4	Nut-HF

<i>Ref.</i>	<i>Part Number</i>	<i>Qty.</i>	<i>Description</i>
9	321-4	4	Screw-HH
10	132-7997	1	Lower Tube ASM
10:1	132-8007	1	Tube-Lower
10:2	1-353005-03	1	Handle
10:3	3256-55	2	Washer-Flat
10:4	3296-42	2	Nut-Lock, NI
10:5	321-6	2	Screw-HH

**Notes:**

**Notes:**



**Count on it.**