



Count on it.

Parts Catalog

Topdresser 1800
Workman® Heavy-Duty Utility Vehicle

Model No. 44225—Serial No. 403420001 and Up



Ordering Replacement Parts

To order replacement parts, please supply the part number, the quantity, and the description of each part desired.

Understanding Reference Numbers

Each identified part in an illustration has a reference number. The reference number for a part also appears in the parts list, along with other information about the part.

This catalog uses two special reference number formats, one to indicate parts in a service assembly and another to indicate the quantity of a given part in an illustration.

Service Assembly Reference Numbers

Parts in service assemblies have reference numbers in the form a:b. The a represents the reference number of the entire service assembly and the b represents a sequential number unique to each part within the service assembly.

For example, a wheel assembly might be identified by reference number 6, the tire by 6:1, the valve by 6:2, and the wheel by 6:3. When you order the assembly identified by reference number 6, you receive all parts identified by reference numbers 6:1, 6:2, and 6:3. However, you may also order any part individually. Reference numbers of this type appear in illustration and in parts lists.

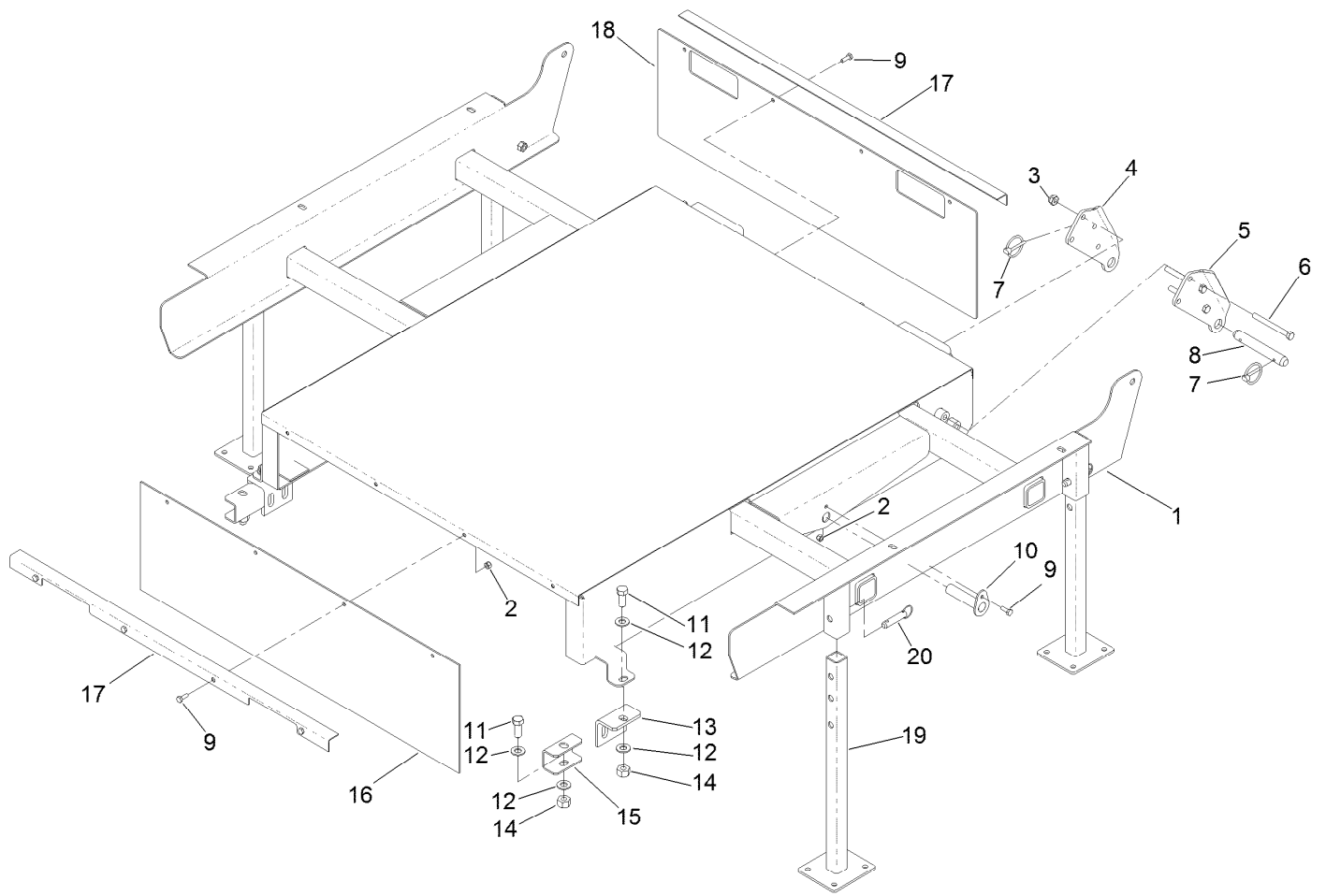
Reference Numbers Indicating Quantity

In an illustration, if a reference number indicates more than one part, the reference number has the form nX y. The n represents the quantity of the part, the X is the multiplication symbol, and the y represents the reference number.

For example, in an illustration, the reference number 2X 37 means that two of the parts identified by reference number 37 are indicated.

Contents

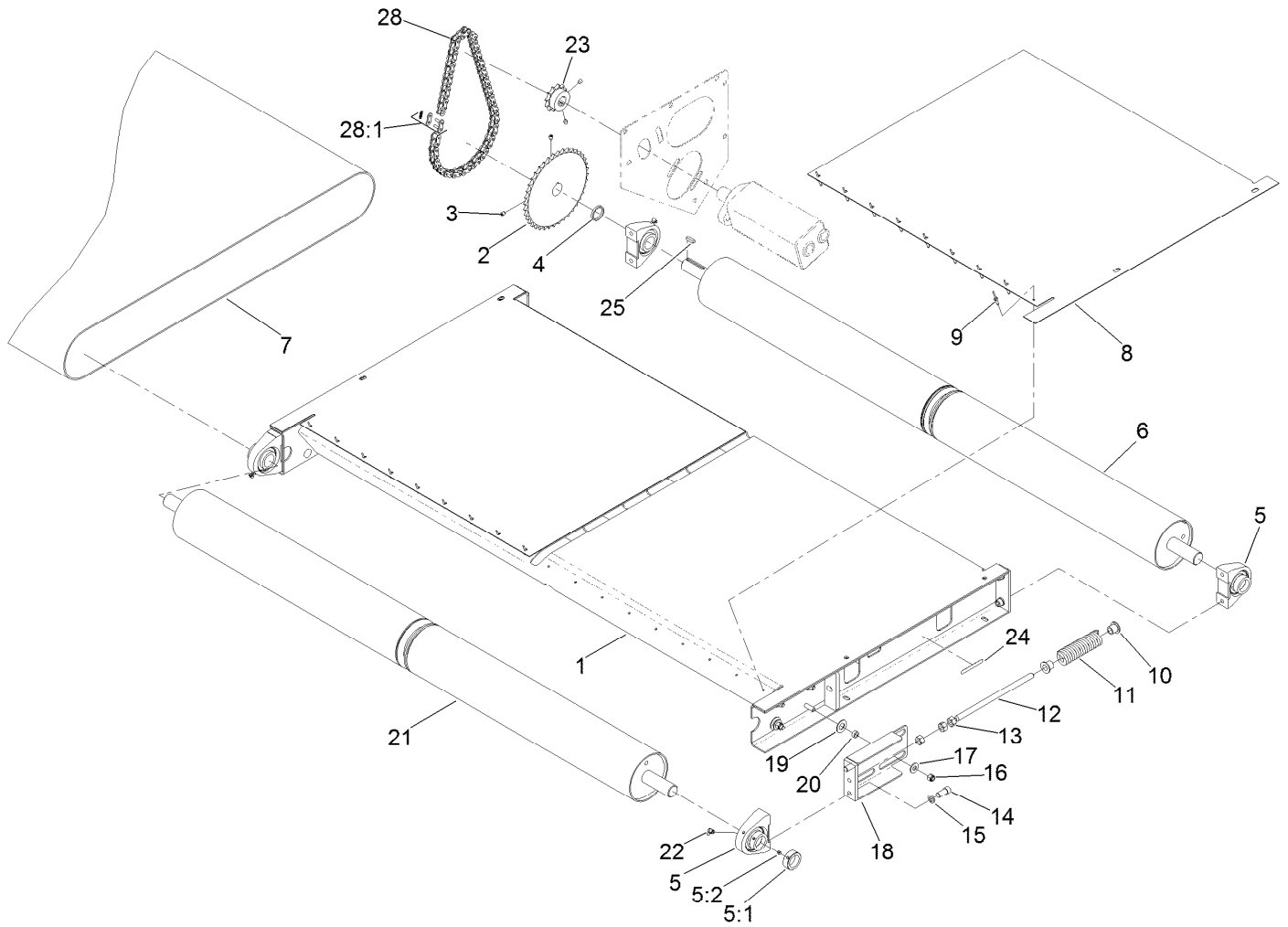
- Base Assembly 4
- Slider Bed and Roller Assembly..... 5
- Gate Assembly 6
- Brush and Motor Assembly..... 7
- Hopper Assembly..... 8
- Gate Slide and Brush Guard Assembly 9
- Hydraulic Assembly 10
- Attachments and Accessories 11



Base Assembly

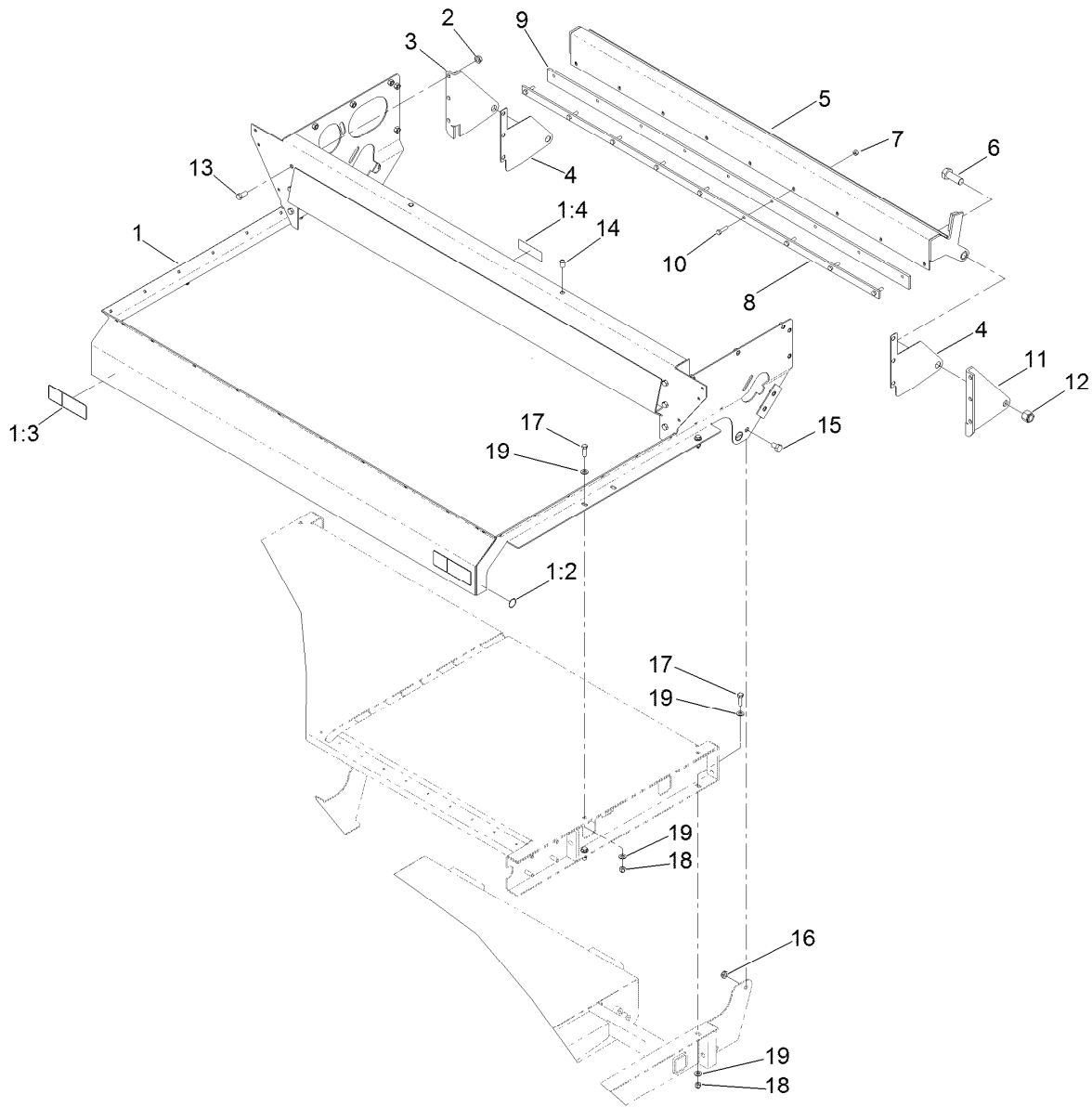
Ref.	Part Number	Qty.	Description	Ref.	Part Number	Qty.	Description
1	106-7857-01	1	Base	11	325-5	4	Screw-HH
2	3296-42	10	Nut-Lock, NI	12	3256-26	8	Washer-Flat
3	3296-44	8	Nut-Lock, NI	13	92-2667-03	2	Bracket-Mount
4	93-9721-03	2	Bracket-Pivot, Long (RH)	14	3296-25	4	Nut-Lock, NI
5	93-9720-03	2	Bracket-Pivot, Long (LH)	15	92-4576	2	Spacer-Mount
6	323-42	8	Screw-HH	16	100-1423	1	Cover-Rubber
7	92-1298	4	Pin-Lynch	17	106-7859-01	2	Clamp-Rubber
8	92-1233	2	Pin-Clevis	18	106-7860	1	Cover-Rubber
9	321-4	10	Screw-HH	19	105-9482-03	4	Stand-Jack ●
10	92-4459	2	Pin-Cylinder	20	100-4523	4	Pin-Hitch ●

● Optional Equipment



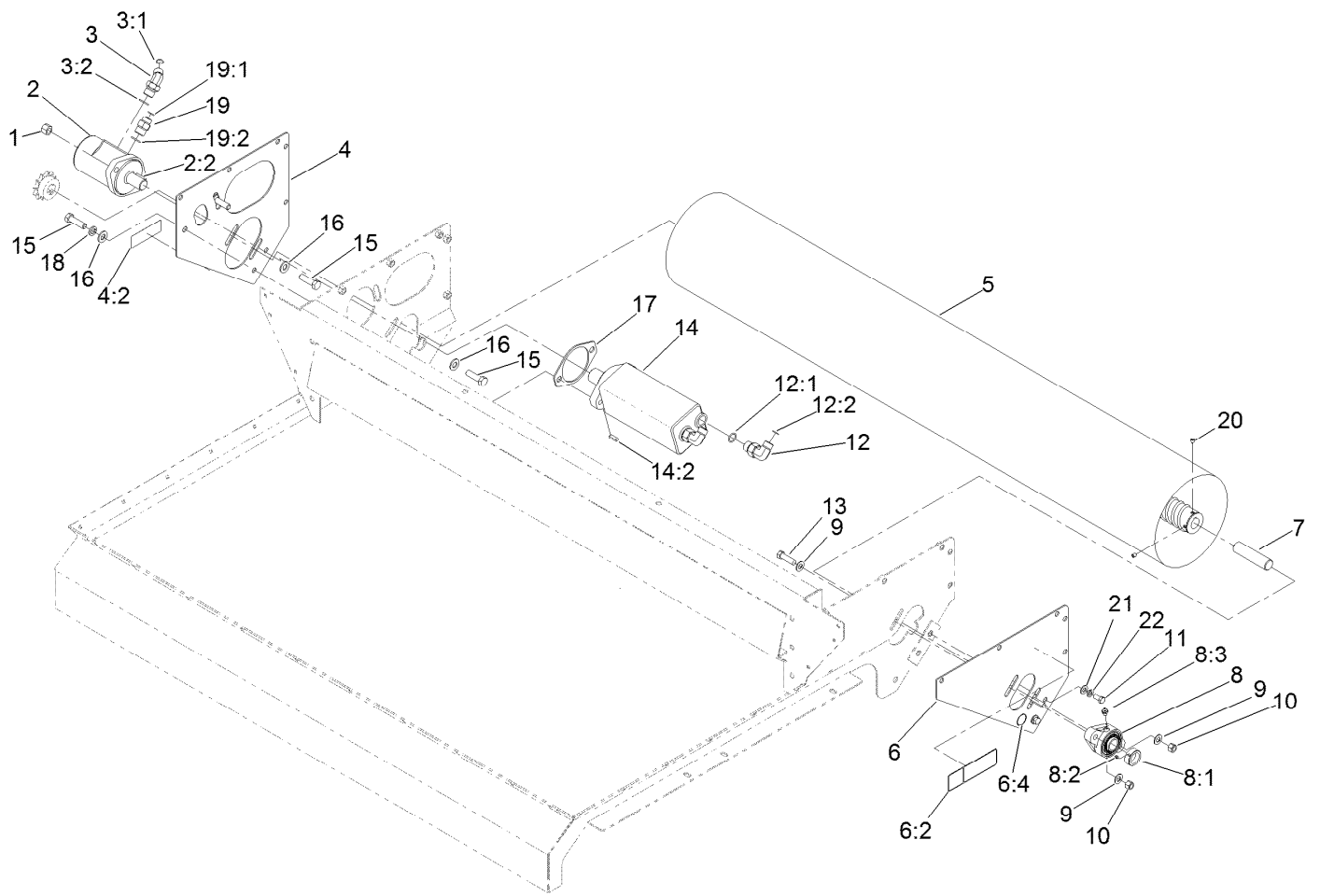
Slider Bed and Roller Assembly

Ref.	Part Number	Qty.	Description	Ref.	Part Number	Qty.	Description
1	99-0038-01	1	Frame-Bed, Slider	14	100-1438	8	Screw-Socket Head, Torx
2	99-0166-03	1	Sprocket-Driven	15	3253-6	8	Washer-Lock
3	3246-3	4	Screw-HSH	16	3296-39	8	Nut-Lock, NI
4	99-0017	1	Spacer-Sprocket	17	3256-4	8	Washer-Flat
5	99-0158	4	Bearing-Base, Tapped	18	99-0050-01	2	Plate-Spring
5:1	251-246	1	Collar W/Set Screws	19	99-0052	8	Washer-Slide
5:2	106-9662	1	Screw-Set, HSH	20	100-1401	8	Spacer-Slide, Spring
6	99-0046	1	Roller-Rear	21	99-0044	1	Roller-Front
7	100-1425	1	Belt Kit	22	302-60	4	Fitting-Grease
8	99-0047	2	Plate-Wear	23	99-0165-03	1	Sprocket-Drive
9	3269-28	18	Rivet-Pop	24	133-8061	1	Decal-Warning
10	100-1414	4	Holder-Spring	25	10-7070	1	Key-Square
11	99-0163	2	Spring-Compression	28	99-0164	1	Chain-Roller
12	99-0118	2	Pin-Spring	28:1	2710-16	1	Link-Chain
13	3217-9	6	Nut-HH				



Gate Assembly

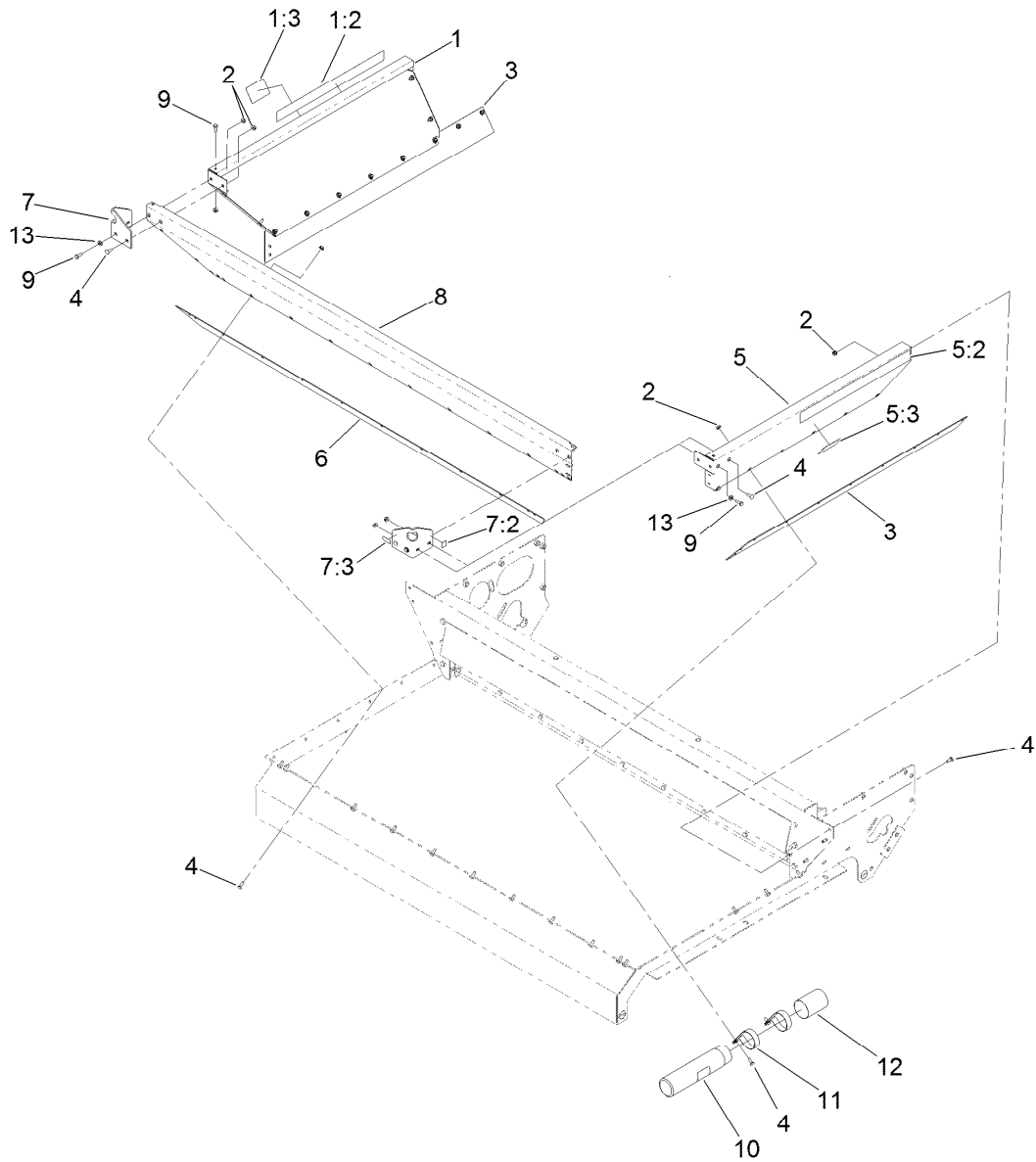
<i>Ref.</i>	<i>Part Number</i>	<i>Qty.</i>	<i>Description</i>	<i>Ref.</i>	<i>Part Number</i>	<i>Qty.</i>	<i>Description</i>
1	100-1435	1	Hopper Frame ASM	9	99-0074	1	Seal-Gate
1:2	58-6520	4	Decal-Grease	10	322-6	9	Screw-HH
1:3	138-5941	2	Decal-Danger, Crushing	11	99-0078-01	1	Bracket-Gate Pivot, LH
1:4	117-4979	1	Decal-Warning	12	3296-51	2	Nut-Lock, NI
2	32128-37	6	Nut-HF	13	324-4	6	Screw-HH
3	99-0079-01	1	Bracket-Gate Pivot, RH	14	32148-9	2	Nut-Clinch
4	99-0117	2	Wareplate-Gate	15	325-2	2	Screw-HH
5	99-0068-01	1	Gate	16	3296-45	2	Nut-Hex
6	328-24	2	Screw-HH	17	323-7	8	Screw-HH
7	3296-29	9	Nut-Lock, NI	18	3296-39	8	Nut-Lock, NI
8	99-0089-01	1	Plate-Backing	19	3256-24	16	Washer-Flat



Brush and Motor Assembly

Ref.	Part Number	Qty.	Description	Ref.	Part Number	Qty.	Description
1	3296-23	2	Nut-Lock, NI	10	3296-48	2	Nut-Hex
2	99-0156	1	HYD Motor ASM	11	323-4	4	Screw-HH
2:1	100-1446	1	Seal Kit ●	12	340-105	2	Fitting-Elbow, 90 DEG
2:2	3257-8	1	Key-Woodruff	12:1	237-80	1	O-Ring
3	340-89	1	Fitting-HYD, 45 DEG	12:2	237-30	1	O-Ring
3:1	237-30	1	O-Ring	13	324-6	2	Screw-HH
3:2	237-80	1	O-Ring	14	99-0155	1	HYD Motor Conveyor ASM
4	100-1431	1	RH Motor Brace ASM	14:1	56-6890	1	Seal Kit ●
4:2	117-4979	1	Decal-Warning	14:2	10-7070	1	Key-Square
5	99-0162	1	Brush	15	325-7	4	Screw-HH
6	100-1430	1	LH Motor Brace ASM	16	3256-26	4	Washer-Flat
6:2	138-5940	1	Decal-Danger	17	99-0116	1	Plate-Spacer
6:4	58-6520	1	Decal-Grease	18	3253-7	2	Washer-Lock
7	99-0041	1	Shaft-Brush	19	340-6	1	Fitting-Straight
8	99-0160	1	Bearing	19:1	237-30	1	O-Ring
8:1	251-249	1	Collar W/Set Screws	19:2	237-80	1	O-Ring
8:2	3245-35	1	Screw-Set, HSH	20	3246-3	4	Screw-HSH
8:3	302-2	1	Fitting-Grease	21	3256-24	4	Washer-Flat
9	3256-25	4	Washer-Flat	22	3253-21	4	Washer-Lock

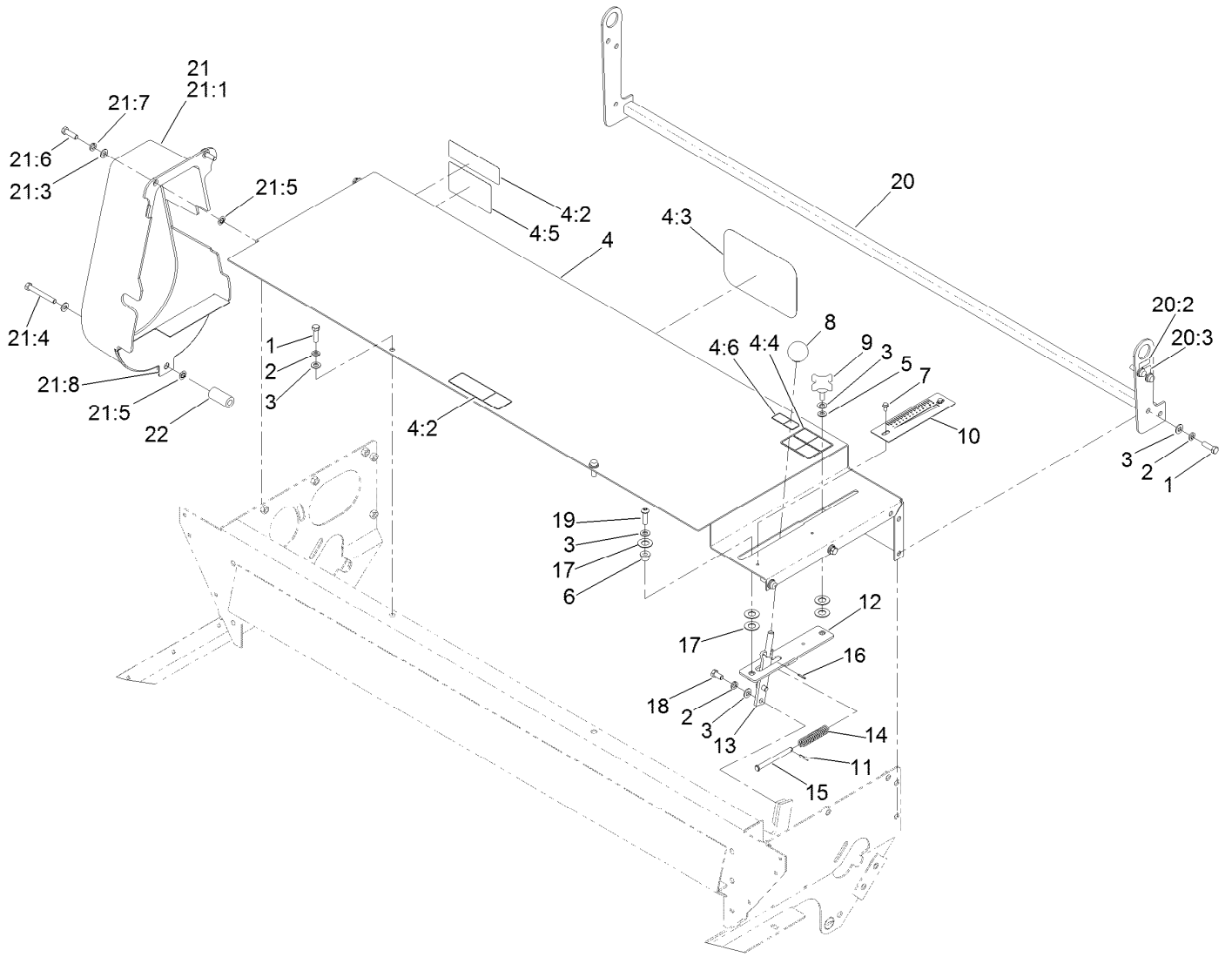
● Not illustrated



Hopper Assembly

<i>Ref.</i>	<i>Part Number</i>	<i>Qty.</i>	<i>Description</i>
1	100-1434	1	RH Hopper Panel ASM
1:2	99-0013	1	Decal
1:3	94-1235	1	Decal-Capacity
2	32128-33	45	Nut-HF
3	99-0142	2	Seal-Sand, Side
4	3229-25	42	Screw-CARR
5	100-1433	1	LH Hopper Panel ASM
5:2	99-0013	1	Decal
5:3	94-1235	1	Decal-Capacity
6	99-0143	1	Seal-Sand, Front

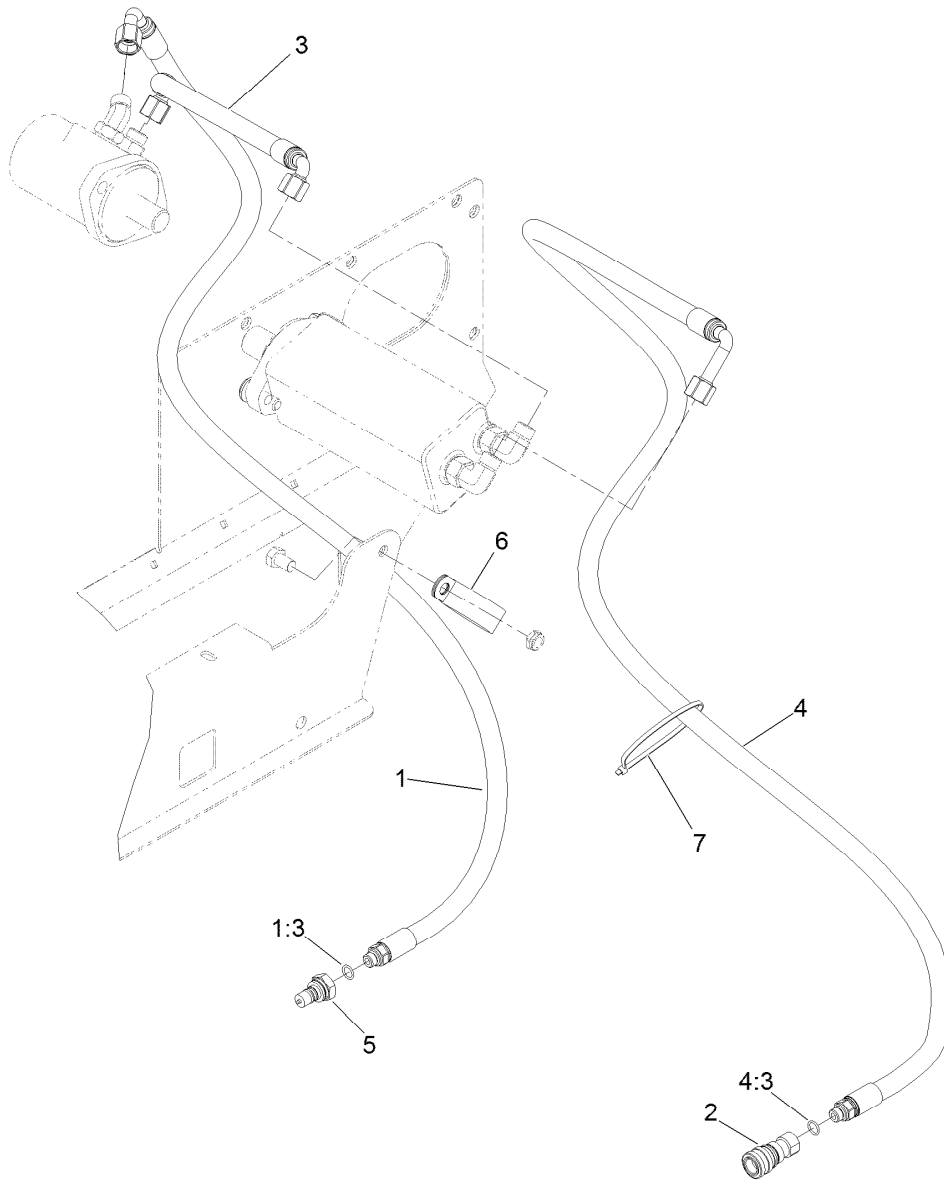
<i>Ref.</i>	<i>Part Number</i>	<i>Qty.</i>	<i>Description</i>
7	100-1428	2	Front Lift Eye ASM
7:2	93-9084	1	Decal-Point, Lift
7:3	93-9529	1	Decal-Value, Kg
8	99-0020	1	Panel-Hopper, Front
9	321-4	6	Screw-HH
10	104-7050	1	Tube-Manual
11	2412-133	2	Clamp-R
12	104-7048	1	Cap-Housing
13	3256-22	4	Washer-Flat



Gate Slide and Brush Guard Assembly

Ref.	Part Number	Qty.	Description
1	323-7	10	Screw-HH
2	3253-21	12	Washer-Lock
3	3256-24	13	Washer-Flat
4	100-1432	1	Brush Guard ASM
4:2	138-5940	2	Decal-Danger
4:3	92-1242	1	Decal
4:4	138-5949	1	Decal-Danger
4:5	105-0708	1	Decal-Danger
4:6	132-1316	1	Decal-Danger, Belt
5	95-4896	1	Washer-Nylon
6	256-259	1	Bushing-Flange
7	93-6083	2	Screw-HWH
8	233-48	1	Knob
9	100-1449	1	Knob
10	100-1416	1	Scale-Gate
11	32121-45	1	Pin-Spring
12	99-0073-03	1	Plate-Block, Slide
13	100-1406-03	1	Handle-Gate

Ref.	Part Number	Qty.	Description
14	100-1448	1	Spring-Gate
15	100-1413	1	Pin-Clevis
16	32121-40	1	Pin-Spring
17	99-0052	5	Washer-Slide
18	323-4	2	Screw-HH
19	3274-63	1	Screw-HSBH
20	106-0281	1	Bumper ASM
20:2	93-9529	2	Decal-Value, Kg
20:3	93-9084	2	Decal-Point, Lift
21	119-0743	1	Chain Guard ASM
21:1	99-0171	1	Guard-Chain
21:3	3256-24	3	Washer-Flat
21:4	99-8664	1	Screw-HH
21:5	107-3154	3	Nut-Push
21:6	323-7	2	Screw-HH
21:7	3253-21	2	Washer-Lock
21:8	106-2326-03	1	Guard-Finger
22	100-1442	1	Spacer-Guard



Hydraulic Assembly

Ref.	Part Number	Qty.	Description
1	110-1962	1	HYD Hose ASM
1:3	237-42	1	O-Ring
2	106-7968	1	Coupler-Quick, Female
3	99-0177	1	Hose-HYD
4	110-1963	1	HYD Hose ASM
4:3	237-42	1	O-Ring
5	106-7969	1	Coupler-Quick, Male
6	100-1424	1	Clamp-R
7	3290-379	4	Tie-Cable

Attachments and Accessories

For 44225 Topdresser 1800 Workman Heavy-Duty Utility Vehicle

Product Name	Model/Part
Sprocket H5015 1.25b.25k	01-262-0040
Hand Throttle Kit.....	07420
Hitch Pin	100-4523
Jack Stand.....	105-9482-03
Engine Cover Kit.....	117-4867
Topdresser 1800 Lift Kit	92-4452
1/3 Area Cover Kit	93-9225



Count on it.