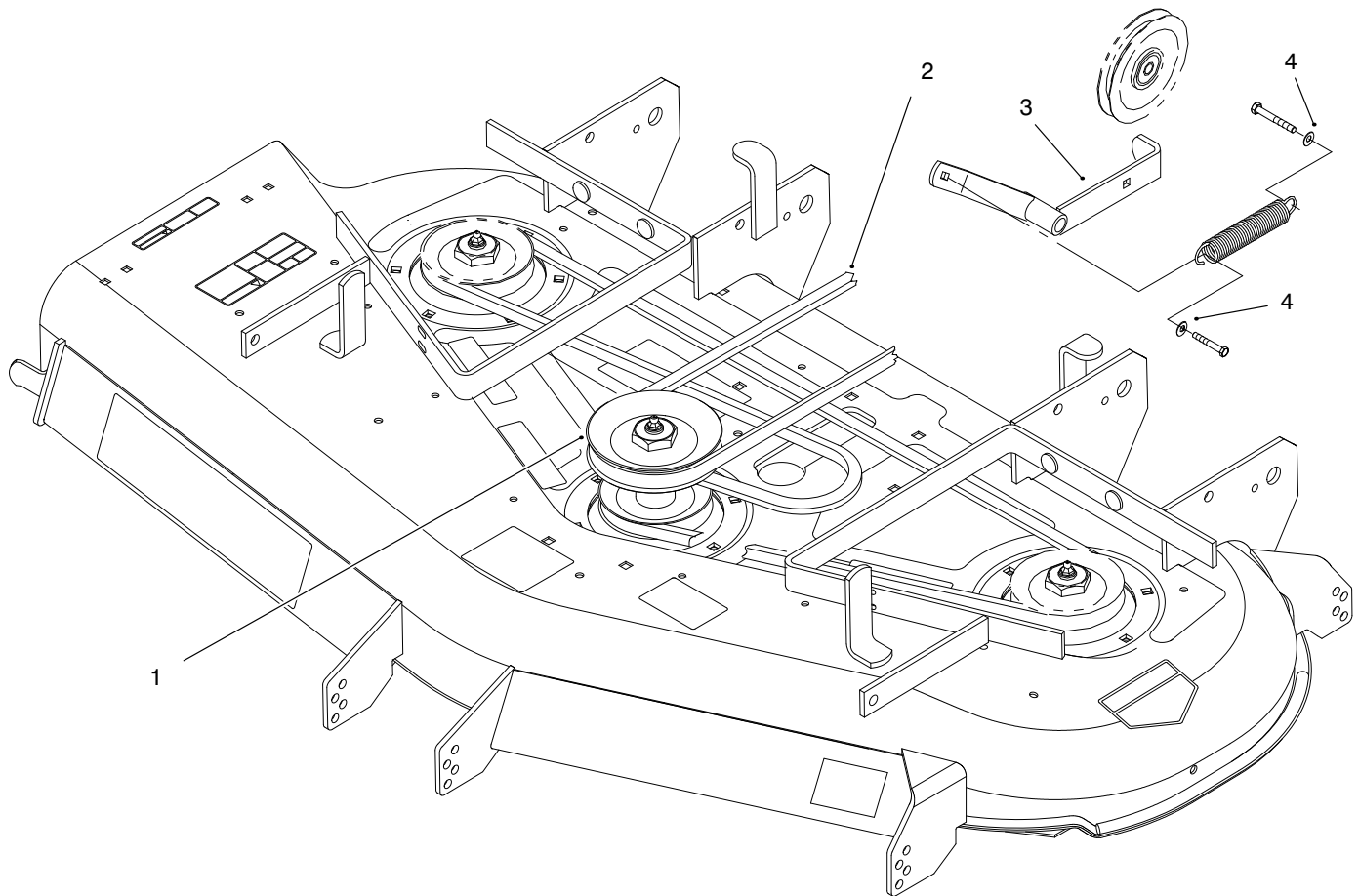




PART NO. 100-2317

**PARTS  
CATALOG**
**52" PULLEY KIT**  
 For Z-Master™ Series


C-2822

**52" PULLEY ASSEMBLY**

Ref. No.	Part No.	Description	No. Used
1	100-2312	Pulley And Hub	1
2	100-2314	Belt	1

Ref. No.	Part No.	Description	No. Used
3	99-4677	Arm ASM (w/Bushings)	1
4	3256-4	Washer-Flat	2