



Proline 21”

Recycler[®] /Rear Bagging Mower

Model No. 22171 – 9900001 & Up

PROTOTYPE

Parts Catalog

ORDERING REPLACEMENT PARTS

To order replacement parts, please supply: the part number, the quantity, and the description of each part desired.

Contents

Description	Page	Description	Page
Housing Assembly	1	Piston/Crankshaft	13
Housing Assembly (cont.)	2	AirFilter/Muffler	14
Gear Case Assembly	3	Colling Equipment	15
Front Wheel & Tire Assembly	4	Lubrication Equipment	16
Engine & Blade Assembly	5	Starter	17
Cylinder/Crankcase	6	Handle & Controls Assembly	18
Valve/Camshaft	7	Rear Axle Assembly	19
Control Equipment	8	Rear Wheel & Tire Assembly	20
Brake/Cover	9	Bagging Assembly	21
Fuel Tank/Fuel Valve	10	Toro Part Number Index	22-29
Electric Equipment	11		
Carburetor	12	Note:	

Accessories

Description	Model / Parts No.	Description	Model / Parts No.
Side Discharge Kit	Model No. 59199		

Part Description Abbreviations

Part descriptions in this catalog may include the following abbreviations.

Abbreviation	Meaning	Abbreviation	Meaning
AR	as required	HWHTF	hex washer head
ASM	assembly		thread forming
CARR	carriage	INC	incorporated
DEG	degrees	LH	left hand
FH	flat head	PH	pan head
GA	gauge	PPH	Phillips pan head
HF	hex flange	PTO	power take off
HFV	hex flange washer	RH	right hand
HH	hex head	SFH	slotted fillister head
HHF	hex head flange	SH	square head
HHST	hex head self tapping	SHWH	slotted hex washer head
HJ	hex jam	SPH	slotted pan head
HOC	height-of-cut	STD	standard
HS	hex socket	TAP	self tapping
HSBH	hex socket button head	TH	truss head
HSFH	hex socket flat head	TTH	Torx truss head
HSR	hex socket head	WH	wing head
HWH	hex washer head		

Important Format Explanations

This catalog uses special formats to convey information in illustrations and parts lists. Specifically, one format is used in conjunction with service assemblies and another with quantities associated with reference numbers.

Service Assemblies

Parts within service assemblies have reference numbers in the form $X:Y$. X is the reference number of the service assembly and Y is a sequential number unique to each part within the service assembly.

For example, a wheel assembly might be identified by reference number 6, the tire by 6:1, the valve by 6:2, and the wheel by 6:3. When you order the assembly identified by reference number 6, you receive all parts identified by reference numbers 6:1, 6:2, and 6:3. However, you may also order any part individually.

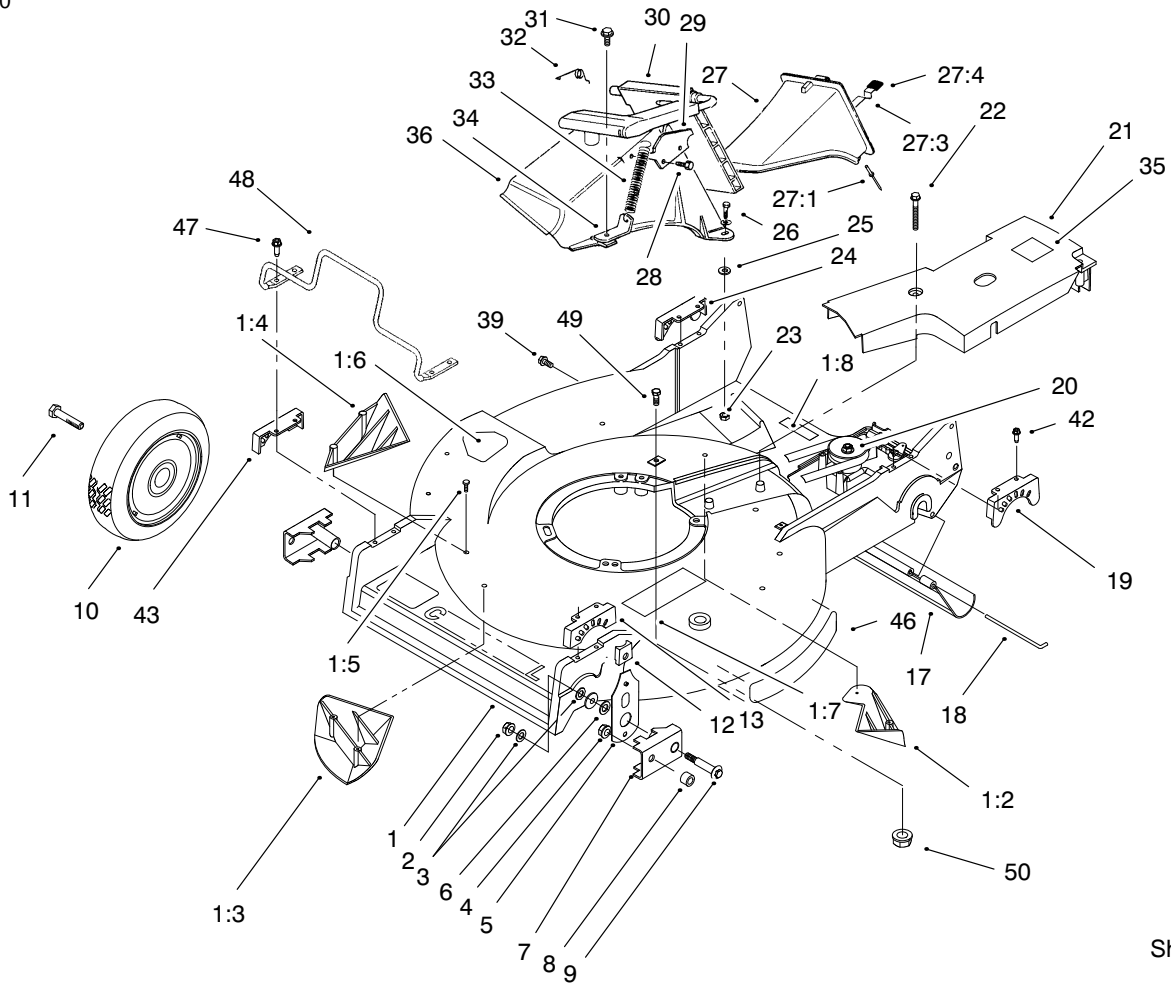
Reference numbers of this type appear in part lists and as callouts in illustrations.

Reference Numbers with Quantities

Illustrations may have a quantity in parentheses next to a reference number, in the form $X (Y)$. X is the reference number. Y in parentheses is the quantity of the part identified by the reference number.

For example, the illustration callout 4 (2) indicates that two parts are used in that instance.

PROTOTYPE

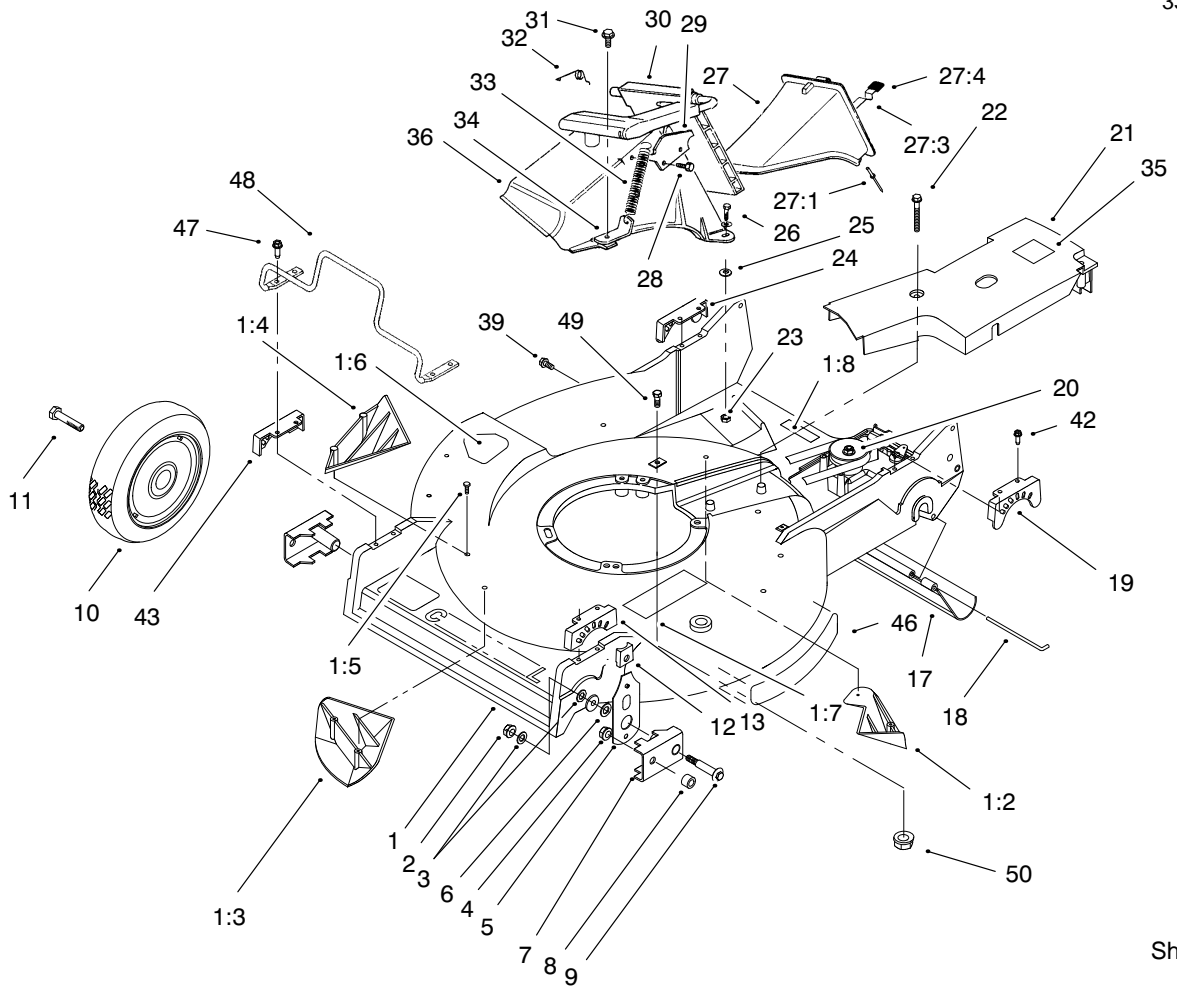


Sheet No.:2

Housing Assembly

Ref. No.	Part No.	Qty.	Description
1	98-7139	1	Housing – Service
1:2	92-1750	1	Kicker – Rear, Sp
1:3	92-1720	1	Kicker – Front
1:4	92-1730	1	Kicker – R.h.
1:5	32144-111	6	Screw-Plask
1:6	39-5770	1	Decal – Cut Finger
1:7	71-1280	1	Decal – Safety Instruct
1:8	92-1779	1	Decal-Warning
2	3296-6	2	Nut-Lock Ni
3	40-1940	4	Washer-Wheel Bolt
4	32152-2	2	Nut-Conelock
5	66-7560	2	Front Spring Arm ASM
6	257-3	2	Washer-Thrust
7	61-8300	2	Pivot Arm Wa – Front
8	52-2480	2	Spacer-Wheel
9	27-6232	2	Bolt-Wheel
10	53-7720	2	Wheel & Tire ASM
11	323-12	2	Screw-HH
12	25-7740	2	Knob-Arm
13	49-8760	1	Quadrant-LH Front
17	44-0580	1	Shield – Trailing
18	33-3208	1	Rod-Shield
19	49-8740	1	Quadrant-LH Rear
20	74-1861	1	Gear Case ASM (Service)

Ref. No.	Part No.	Qty.	Description
21	99-6298	1	Cover-Belt, Sp (Commercial)
22	37-7260	2	Screw-HH
23	3296-42	2	Nut-Lock Ni
24	49-8750	1	Quadrant-RH Rear
25	3256-22	2	Washer-Flat
26	321-7	2	Screw-HH
27	77-0500	1	Discharge Plug Assembly
27:1	3295-35	1	Rivet-Alum
27:3	76-4640	1	Latch-Disc. Plug +
27:4	76-4650	1	Grip-Latch
28	46-8090	2	Screw-Plastite
29	93-3154	1	Latch-Plate
30	93-7351	1	ASM – Discharge Door
31	46-6811	1	Screw/Washer V
32	80-3770	1	Spring-Door Ret
33	76-4660	1	Spring-Door
34	71-9350	1	Bracket-Spring
35	52-2620	1	Label-Sp Grease
36	82-9152	1	Tunnel-Discharge
39	46-6810	1	Screw & Washer ASM
42	49-2040	4	Screw-Taptite
43	49-8770	1	Quadrant-RH Front
46	92-7988	1	Decal – Recycler

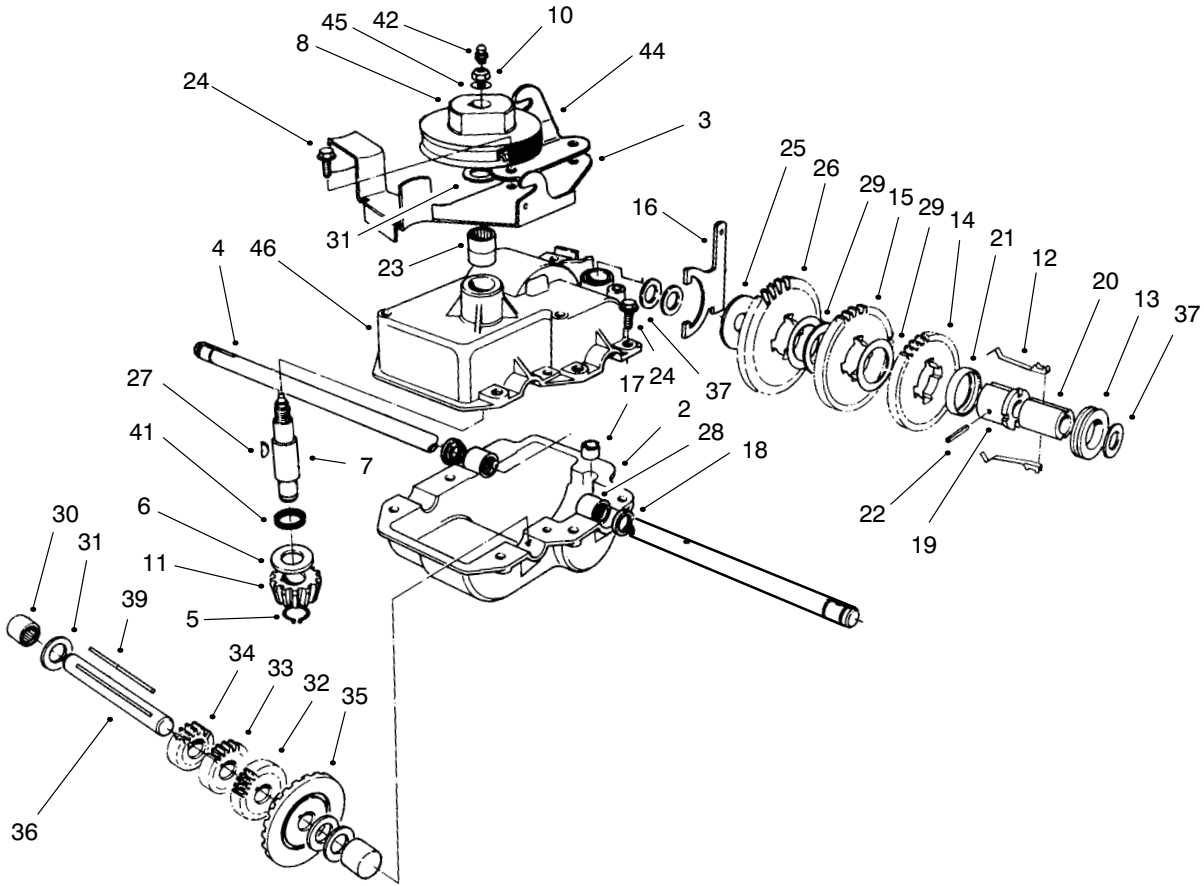


Sheet No.:2

Housing Assembly (cont.)

Ref. No.	Part No.	Qty.	Description	Ref. No.	Part No.	Qty.	Description
47	32144-86	4	Screw-HH				
48	99-6722	1	Guard Engine				
49	323-6	2	Screw-HH				
50	3296-39	2	Nut-Lock Ni				

PROTOTYPE

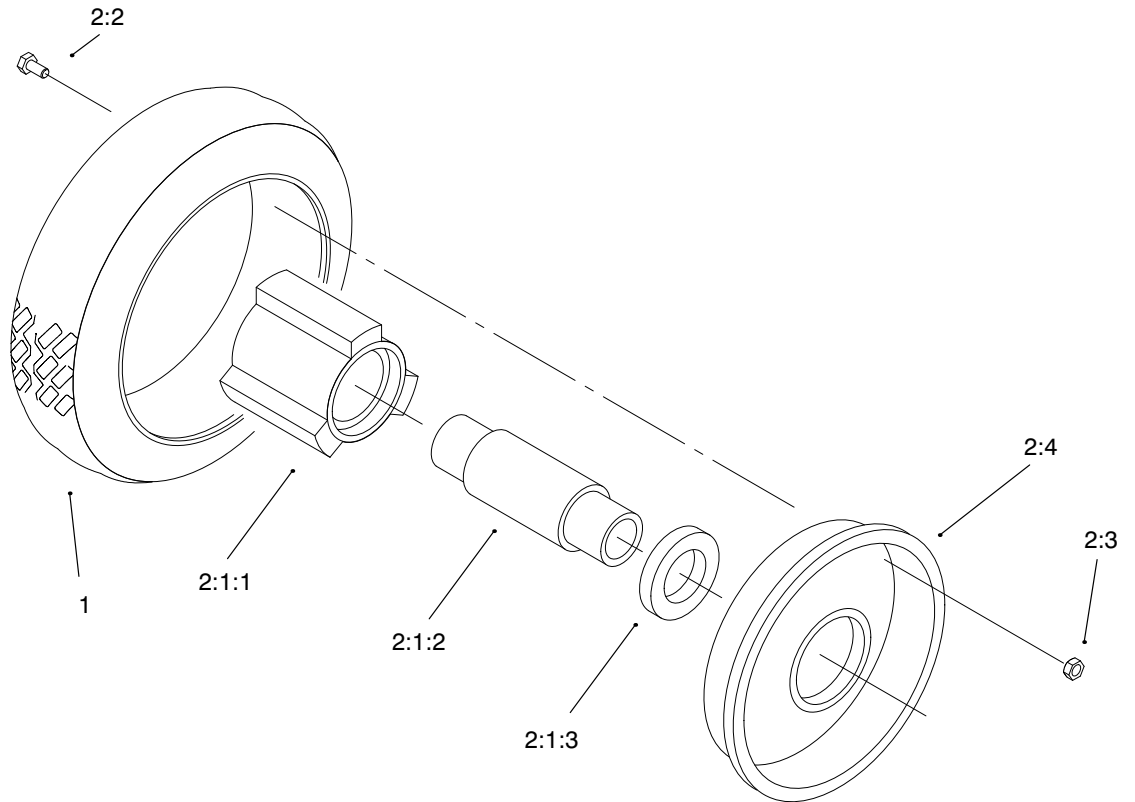


Sheet No.:2a

Gear Case Assembly

Ref. No.	Part No.	Qty.	Description
2	74-1920	2	Case-Lower Gear
3	49-8461-03	1	Bracket-Belt Guide
4	74-1890	2	Shaft-Output
5	32151-57	2	Ring-Retaining
6	47-2910	2	Washer-Thrust
7	13-5149	1	Input Shaft w/Zerk
8	39-6740	2	Pulley
9	74-1880	2	Case-Upper Gear
10	3296-5	2	Nut-Lock Ni
11	39-6660	2	Pinion-Bevel
12	29-9330	4	Key
13	29-9340	2	Collar-Shift
14	42-4740	2	Gear-38 Tooth
15	29-9271	2	Gear-42 Tooth
16	60-8870	2	Yoke-Shift
17	29-9570	2	Bushing-Yoke
18	47-6730	4	Seal-Oil
19	55-8010	2	Sleeve-Gear
20	39-6720	2	Sleeve
21	55-8020	2	Retainer-Key
22	3285-19	2	Pin-Groove
23	47-7270	4	Bearing
24	49-2040	14	Screw-Taptite
25	29-9690	2	Washer
26	46-3560	2	Gear
27	3257-1	4	Key-Woodruff

Ref. No.	Part No.	Qty.	Description
28	48-2060	4	Bearing-Roller
29	36-4770	6	Washer
30	252-103	4	Bearing-Closed
31	36-4792	8	Washer-Thrust
32	39-6650	2	Gear-18t
33	46-3550	2	Gear
34	46-3540	2	Gear
35	74-1760	2	Gear-Bevel
36	53-7950	2	Shaft-Intermediate
37	36-4780	6	Washer
39	39-7842	2	Key
41	47-7260	2	Seal
42	302-63	2	Zerk
44	74-1750-03	1	Brk-Traction Engage
45	3256-45	2	Washer-Flat
*	74-1861	1	Gear Case ASM (Service)



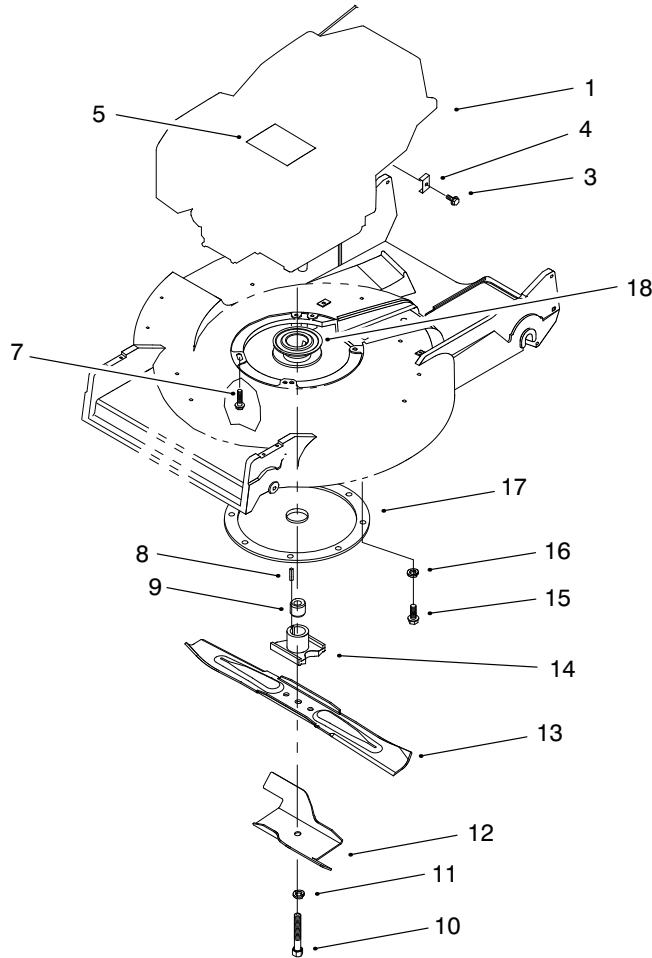
Sheet No.:2b

Front Wheel & Tire Assembly

Ref. No.	Part No.	Qty.	Description
1	53-7740	1	Tire
2		1	Wheel ASM HP *
2:1		1	Hub & Brg ASM
2:1:1	52-2410	1	Hub-Bearing Supt +
2:1:2	52-2440	1	Spacer-Bearing +
2:1:3	52-2450	2	Bearing-Wheel +
2:2	321-2	4	Screw-HH
2:3	3296-42	4	Nut-Lock Ni
2:4	53-7780-06	2	Plate-Wheel Half

Ref. No.	Part No.	Qty.	Description

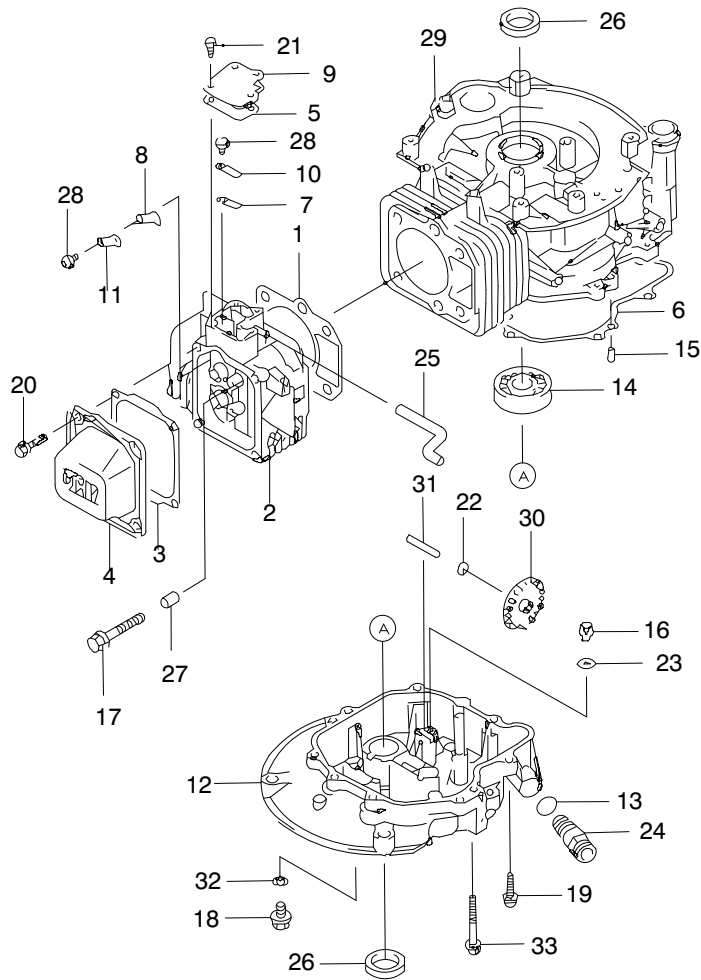
PROTOTYPE



Sheet No.:3

Engine & Blade Assembly

Ref. No.	Part No.	Qty.	Description	Ref. No.	Part No.	Qty.	Description
1		1	Engine-4cyc Zs (Kawasaki)T209				
3	95-9853	1	Bolt				
4	95-9849	1	Clamp				
5	99-6297	1	Decal Engine				
7	100-2835	3	Screw-Engine Mount				
8	27-6300	1	Key-Square				
9	99-6279	1	Spacer-Blade Retainer				
10	26-0670	1	Screw-Blade				
11	3253-22	1	Washer-Lock/Sp				
12	92-1599-03	1	Stiffener-Blade				
13	14-9419	1	Blade w/Decal				
14	99-6283	1	Blade Retainer W.a.				
15	32144-70	3	Screw-Taptite				
16	3254-6	3	Washer-Lock/Int				
17	65-5860	1	Crankshaft Protector As				
18	100-1586	1	Pulley-Driver				

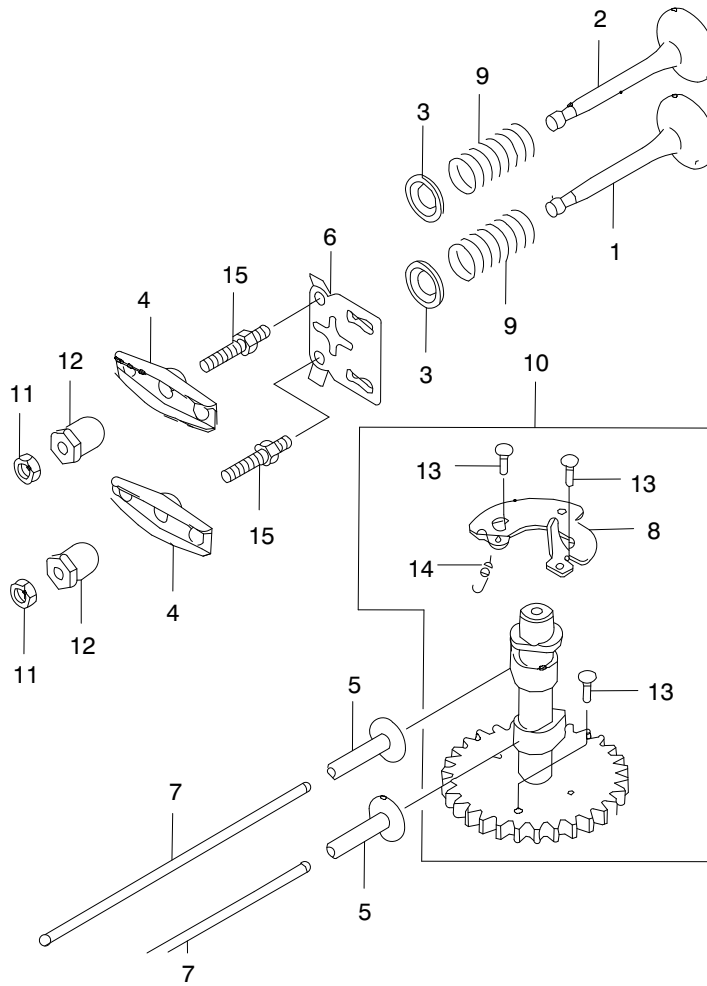


Sheet No.:3a

Cylinder/Crankcase

Ref. No.	Part No.	Qty.	Description
1	100-2742	1	Gasket-Head
2	100-2743	1	Head-Complete-Cylinder
3	100-2744	1	Gasket Rocker Case
4	100-2745	1	Case-Rocker
5	100-2746	1	Gasket Cover
6	100-2747	1	Gasket Crankcase Cover
7	100-2748	1	Plate
8	100-2749	1	Plate
9	100-2779	1	Cover
10	100-2780	1	Valve
11	100-2781	1	Valve
12	100-2782	1	Cover-Crankcase
13	100-2840	1	O-Ring
14	100-2841	1	Ball Bearing
15	93-8516	2	Pin
16	100-2842	1	Bolt Upset Wsp
17	Kw10035	4	Bolt, Flanged 8x45
18	Kw10033	1	Bolt, Flanged 8x12
19	100-2610	6	Bolt Flanged
20	100-2804	4	Bolt-Flanged
21	100-2609	4	Bolt Flanged
22	100-2843	1	Washer 6x12x1.6
23	100-2844	1	Washer 5x16x0.8
24	100-2854	1	Plug

Ref. No.	Part No.	Qty.	Description
25	100-2846	1	Tube
26	100-2847	2	Seal Oil
27	100-2848	2	Pin
28	93-8549	2	Screw
29	100-2849	1	Crankcase Complete
30	99-6728	1	Oil Slinger
31	99-6729	1	Shaft
32	99-6730	1	Gasket
33	100-2855	1	Bolt Flanged



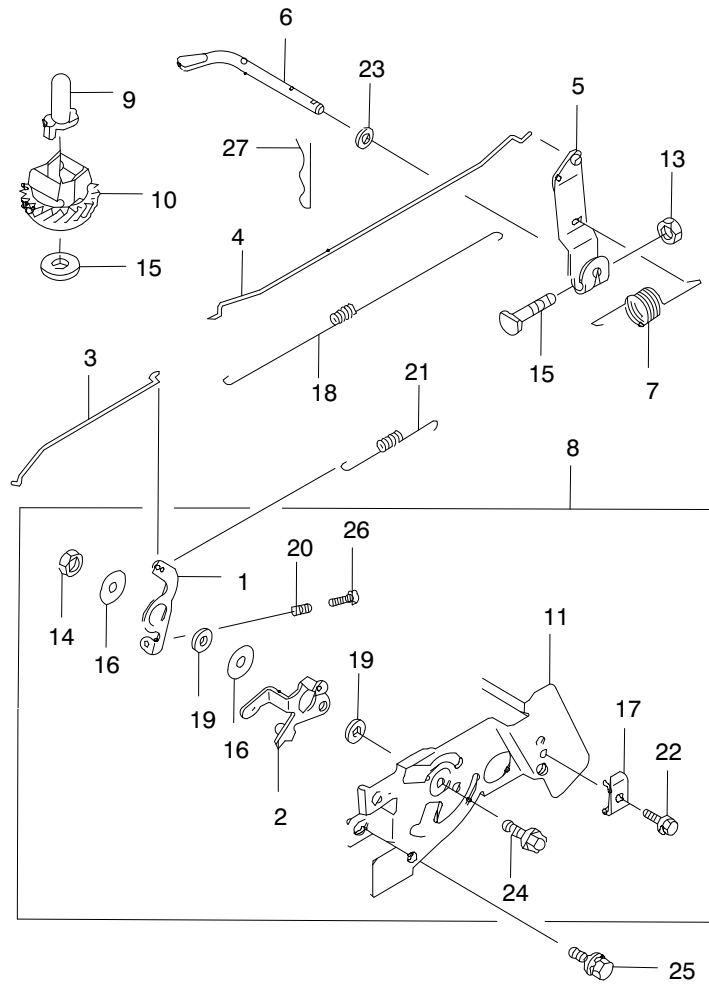
Sheet No.:3b

Valve/Camshaft

Ref. No.	Part No.	Qty.	Description
1	100-2727	1	Valve-Intake
2	100-2728	1	Valve-Exhaust
3	100-2729	2	Retainer-Valve Spring
4	100-2730	2	Arm-Rocker
5	100-2731	2	Tappet
6	100-2732	1	Giude
7	100-2733	2	Rod-Push
8	100-2734	1	Decompressor
9	100-2735	2	Spring-Engine Valve
10	100-2736	1	Camshaft-Complete
11	93-8533	2	Nut
12	93-8534	2	Nut
13	100-2739	3	Pin
14	100-2740	1	Spring
15	100-2741	2	Bolt

Ref. No.	Part No.	Qty.	Description

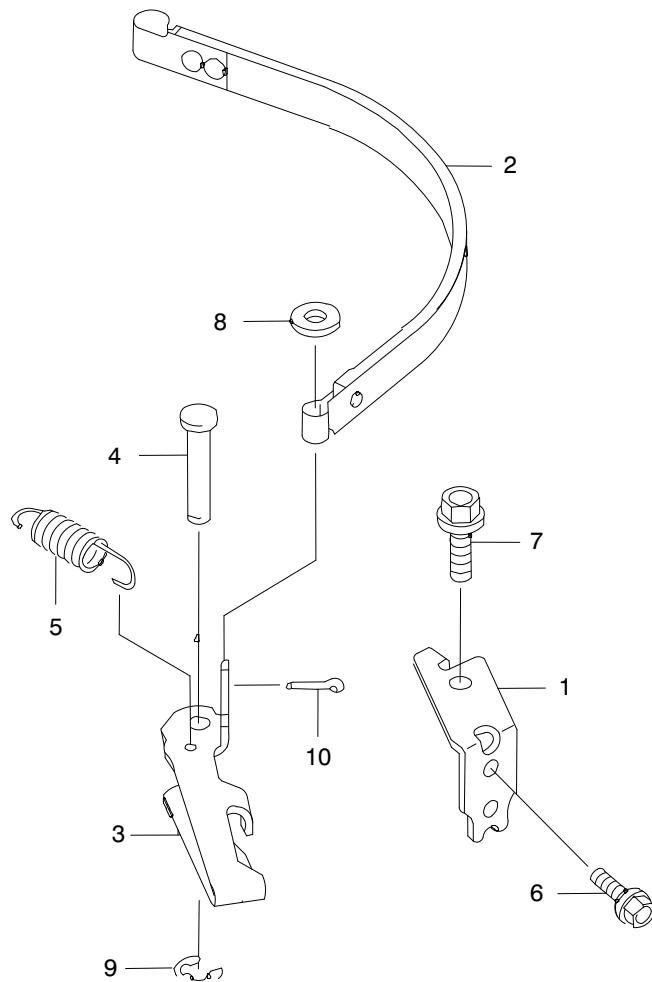
PROTOTYPE



Sheet No.:3c

Control Equipment

Ref. No.	Part No.	Qty.	Description	Ref. No.	Part No.	Qty.	Description
1	100-2700	1	Lever				
2	100-2701	1	Lever				
3	100-2702	1	Link-Choke				
4	100-2703	1	Link				
5	100-2704	1	Arm-ASM				
6	100-2705	1	Arm-Pivot				
7	100-2706	1	Spring-Governor				
8	100-2707	1	Panel-ASM Control				
9	100-2708	1	Sleeve				
10	93-8611	1	Governor ASM				
11	100-2710	1	Panel-Control				
12	93-8608	1	Washer				
13	93-8631	3	Nut				
14	93-8595	1	Nut				
15	94-6842	1	Washer				
16	100-2715	2	Washer 6x9x1.2				
17	95-9849	1	Clamp				
18	100-2717	1	Spring Link				
19	100-2718	2	Collar 6x13x2.3				
20	93-8588	1	Spring				
22	95-9853	1	Bolt				
23	93-8608	1	Washer				
24	95-9837	1	Bolt - Flanged				
25	100-2724	2	Bolt-Upset-Wsp				
26	100-2725	1	Screw-Pan				
27	93-8607	1	Pin-Snap				

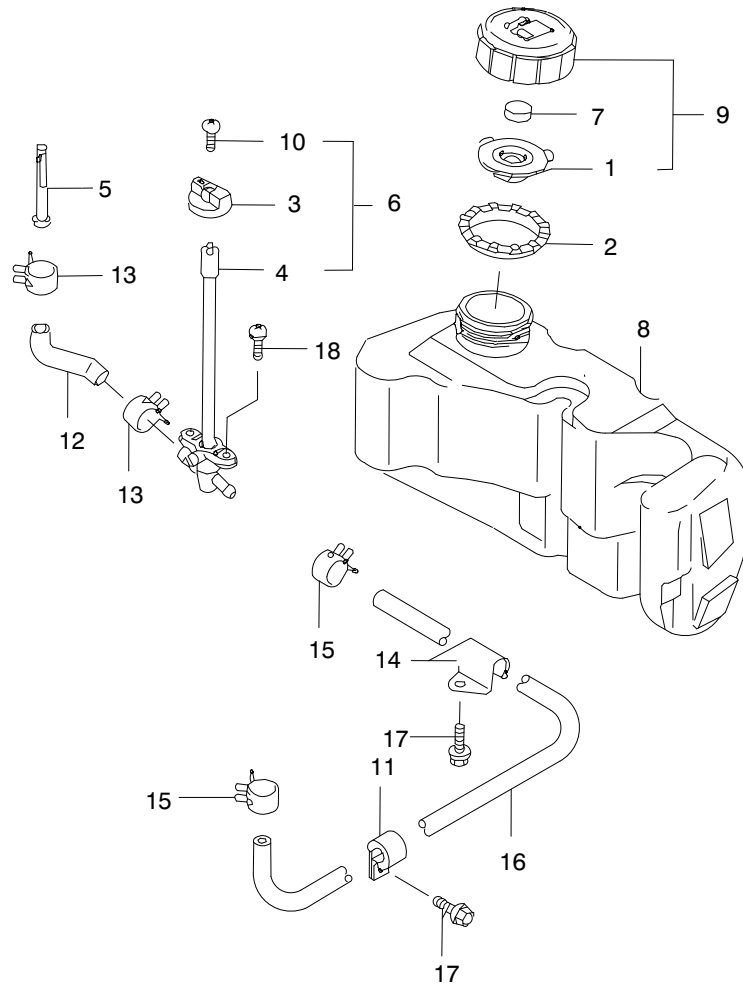


Sheet No.:3d

Brake/Cover

Ref. No.	Part No.	Qty.	Description
1	100-2783	1	Bracket
2	100-2784	1	Band-Brake
3	100-2785	1	Lever-Brake
4	100-2786	1	Pin
5	100-2787	1	Spring
6	100-2609	1	Bolt Flanged
7	Kw10029	1	Bolt, Flanged 6x10
8	100-2671	1	Washer Plain S
9	100-2791	1	Circlip-Type-E
10	100-2792	2	Pin Cotter

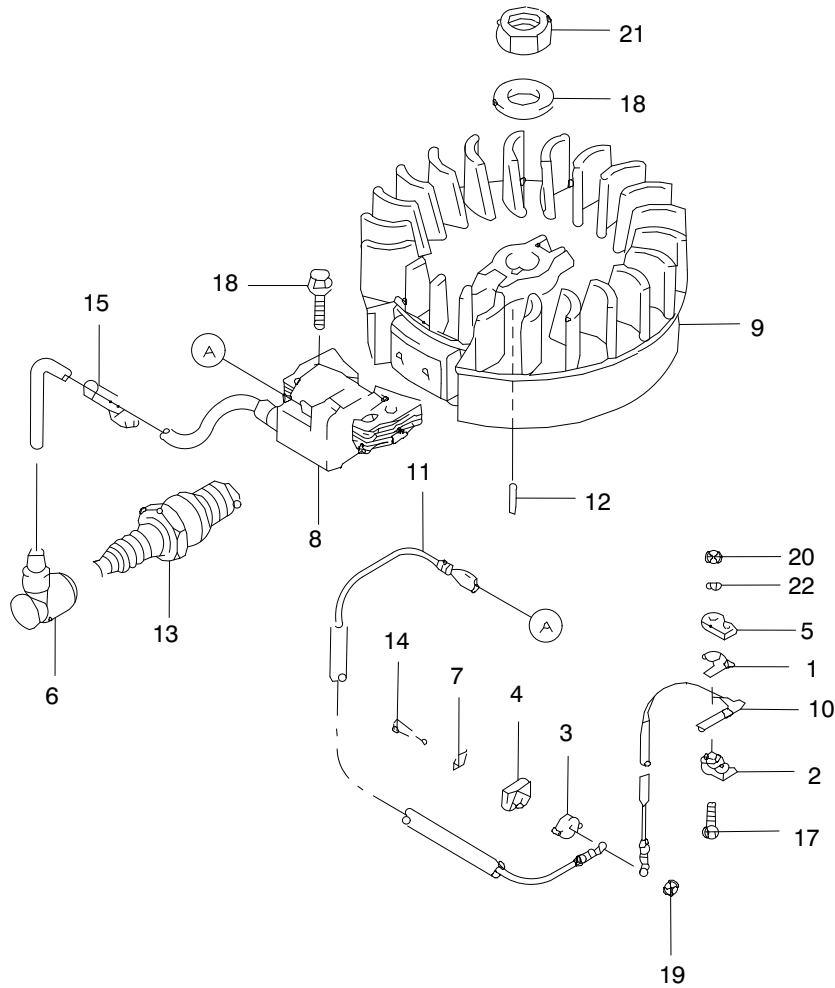
Ref. No.	Part No.	Qty.	Description
PROTOTYPE			



Sheet No.:3e

Fuel Tank/Fuel Valve

Ref. No.	Part No.	Qty.	Description	Ref. No.	Part No.	Qty.	Description
1	100-2808	1	Gasket				
2	100-2809	1	Guide				
3	100-2810	1	Lever				
4	100-2811	1	Filter Complete				
5	100-2812	1	Filter Fuel				
6	100-2814	1	Filter Fuel				
7	100-2813	1	Element-Breather				
8	100-2815	1	Tank Complete Fuel				
9	100-2816	1	Cap-ASM-Tank				
10	100-2817	1	Screw				
11	100-2818	1	Clamp				
12	100-2819	1	Tube				
13	100-2820	2	Clamp				
14	100-2821	1	Clamp				
15	100-2822	2	Clamp				
16	100-2823	1	Tube 4.8x10.3x433				
17	100-2804	2	Bolt-Flanged				
18	100-2825	2	Screw-Pan-Wp				

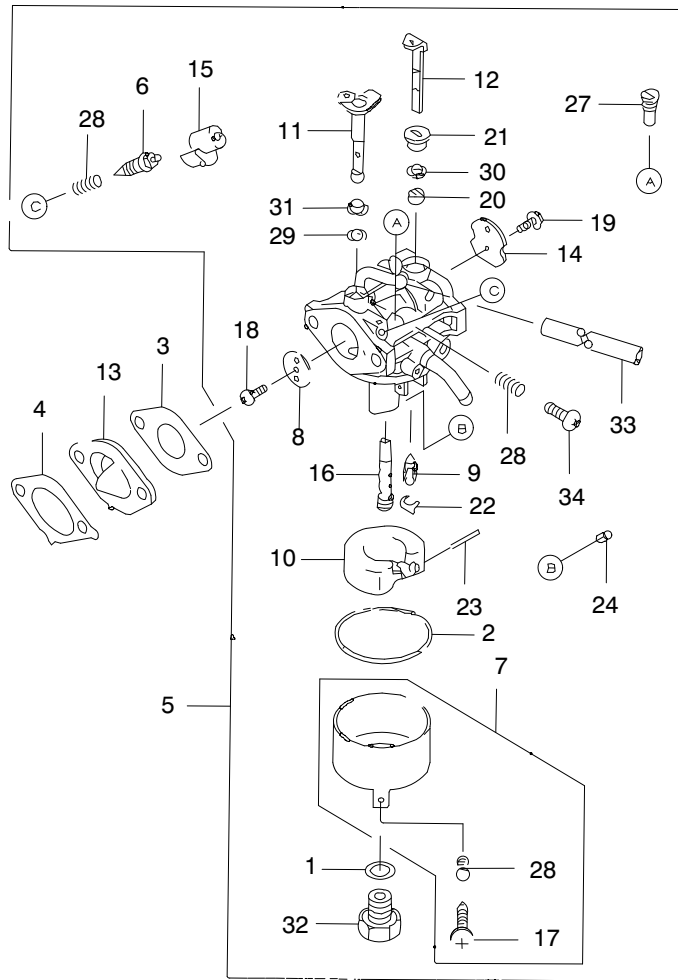


Sheet No.:3f

Electric Equipment

Ref. No.	Part No.	Qty.	Description	Ref. No.	Part No.	Qty.	Description
1	100-2650	1	Plate				
2	100-2651	1	Cover				
3	100-2652	1	Cover				
4	100-2653	1	Insulator				
5	100-2654	1	Insulator				
6	Kw10087	1	Cap Plug				
7	100-2656	1	Terminal				
8	100-2657	1	Coil ASM Ignition				
9	100-2658	1	Flywheel Complete				
10	100-2659	1	Wire Lead				
11	100-2660	1	Wire Lead L=300mm				
12	93-8571	1	Key				
13	100-2662	1	Plug-Spark Bpr5es(Ngk)				
14	100-2663	1	Bolt 4x20				
15	100-2664	1	Clamp				
16	100-2665	1	Washer				
17	100-2666	1	Bolt Upset				
18	100-2610	2	Bolt Flanged				
19	100-2668	1	Nut Hex				
20	100-2669	1	Nut Hex				
21	93-8568	1	Nut				
22	100-2671	1	Washer Plain S				

PROTOTYPE

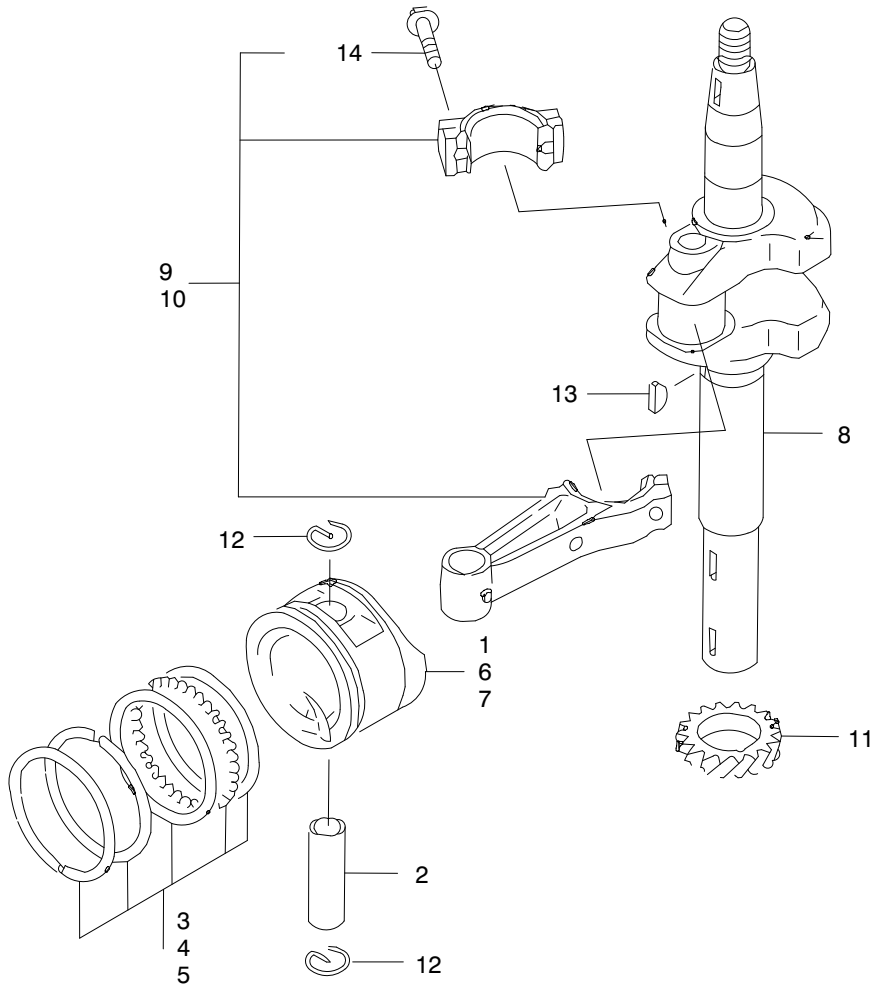


Sheet No.:3g

Carburetor

Ref. No.	Part No.	Qty.	Description
1	100-2611	1	Gasket
2	100-2612	1	Gasket
3	100-2613	1	Gasket Carburetor
4	100-2614	1	Gasket Insulator
5	100-2615	1	Carburetor ASM
6	100-2616	1	Screw Pilot Air
7	100-2617	1	Chamber Float
8	100-2618	1	Valve Throttle
9	100-2619	1	Valve Float
10	100-2620	1	Float
11	100-2621	1	Shaft Carburetor Throttle
12	100-2622	1	Shaft Carburetor Choke
13	100-2623	1	Insulator
14	100-2624	1	Valve
15	100-2625	1	Limiter
16	100-2626	1	Nozzle Main
17	100-2627	1	Screw
18	100-2628	1	Screw
19	100-2629	2	Screw
20	100-2630	1	Collar
21	100-2631	1	Collar
22	Kw10297	1	Clip
23	100-2633	1	Pin
24	100-2634	1	Jet Main #62.5

Ref. No.	Part No.	Qty.	Description
27	100-2635	1	Jet Pilot #37.5
28	100-2636	3	Spring
29	100-2637	1	Seal
30	100-2638	1	Seal
31	100-2639	1	Collar
32	100-2640	1	Bolt
33	100-2641	1	Tube 4x7x125
34	100-2642	1	Screw Pan



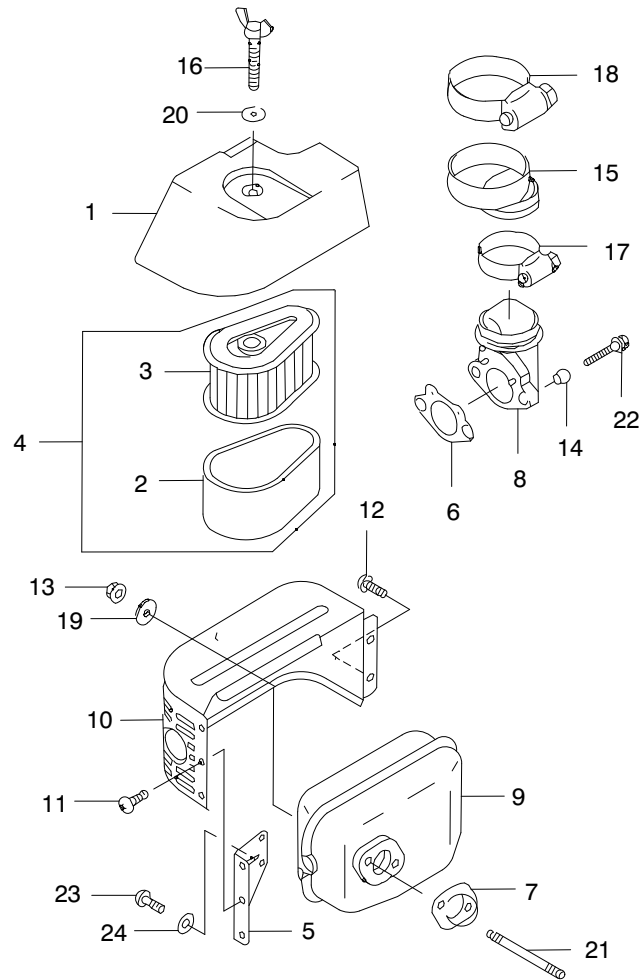
Sheet No.:3i

Piston/Crankshaft

Ref. No.	Part No.	Qty.	Description
1	100-2672	1	Piston Engine
2	100-2673	1	Pin-Piston
3	100-2674	1	Ring Set Piston
4	100-2675	1	Ring Set Piston L0.25
5	100-2676	1	Ring Set Piston L0.50
6	100-2677	1	Piston Engine L0.25
7	100-2678	1	Piston Engine L0.50
8	100-2679	1	Crankshaft
9	100-2680	1	Rod ASM Connecting
10	100-2681	1	Rod ASM Connecting U/S=0.50
11	100-2682	1	Gear-Helical
12	100-2683	2	Ring-Snap
13	93-8526	1	Key
14	93-8527	2	Bolt-Rod

Ref. No.	Part No.	Qty.	Description

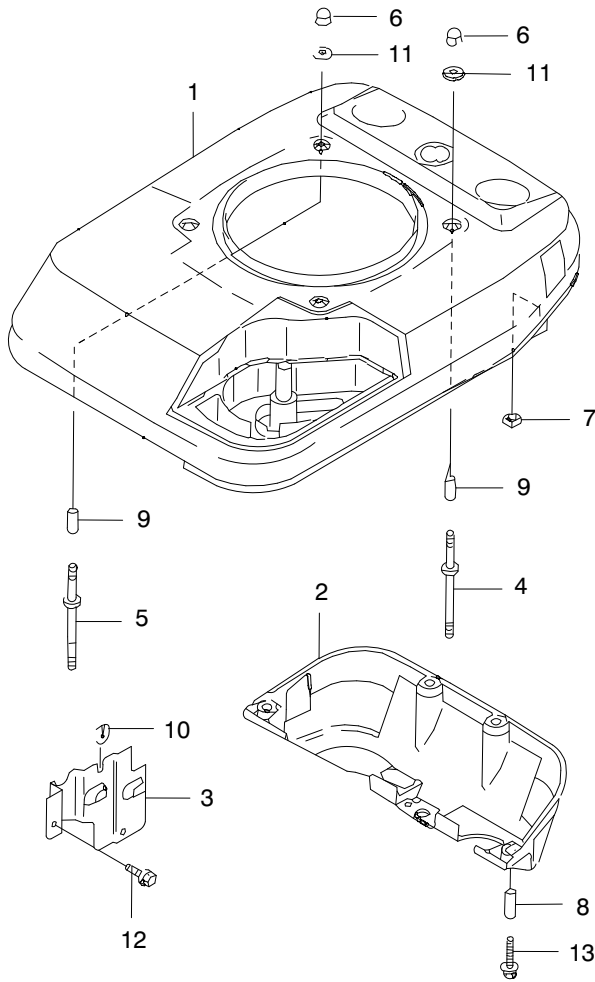
PROTOTYPE



Sheet No.:3j

AirFilter/Muffler

Ref. No.	Part No.	Qty.	Description	Ref. No.	Part No.	Qty.	Description
1	100-2691	1	Cap Air Filter				
2	100-2692	1	Element Air Filter				
3	100-2693	1	Element Air Filter				
4	100-2694	1	Element ASM Air Filter				
5	100-2695	1	Bracket				
6	100-2696	1	Gasket Intake Pipe				
7	100-2697	1	Gasket Muffler				
8	100-2698	1	Pipe-Intake				
9	100-2699	1	Muffler Complete				
10	100-2750	1	Cover Muffler				
11	93-8549	3	Screw				
12	95-9716	2	Screw				
14	100-2754	2	Spacer 6.2x7.8x8				
15	100-2755	1	Tube				
16	100-2756	1	Bolt				
17	100-2757	1	Clamp				
18	100-2758	1	Clamp				
19	100-2759	2	Washer 7x21x2.3				
20	100-2760	1	Washer 6.5x18x2.0				
21	100-2761	2	Bolt-Stud				
22	100-2762	2	Bolt Upset Wp				
23	100-2763	2	Screw Pan				
24	93-8639	2	Washer				

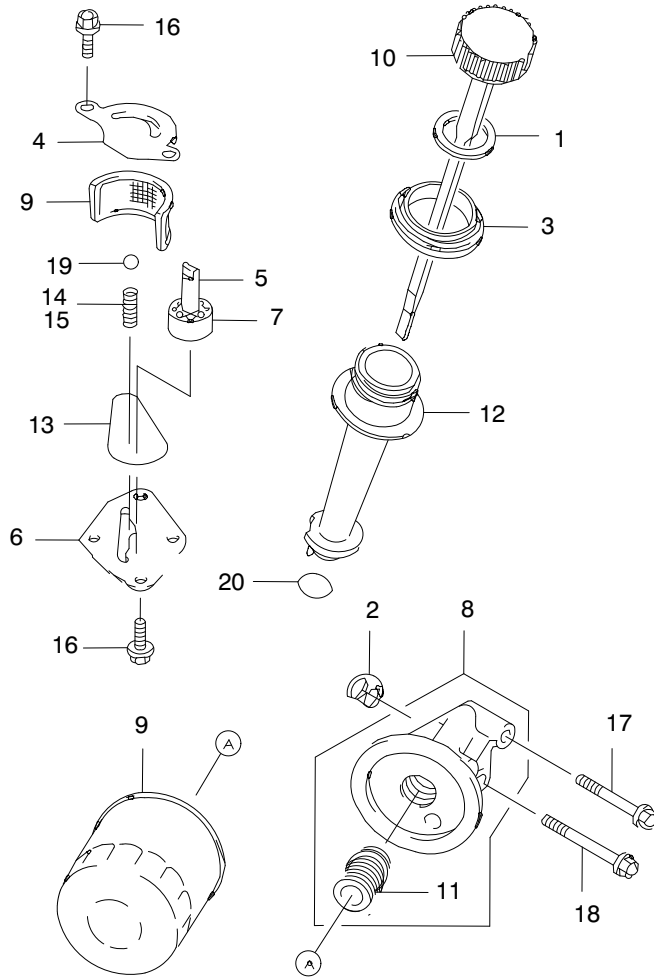


Sheet No.:3k

Colling Equipment

Ref. No.	Part No.	Qty.	Description	Ref. No.	Part No.	Qty.	Description
1	100-2600	1	Cover Upper				
2	100-2793	1	Cover Lower				
3	100-2794	1	Cover				
4	100-2601	3	Stud				
5	100-2602	1	Stud				
6	100-2603	4	Nut				
7	100-2604	4	Nut 6mm				
8	100-2606	4	Spacer 6.2x7.8x17				
9	100-2605	4	Spacer 6.2x7.8x22				
10	100-2607	1	Grommet				
11	100-2760	4	Washer 6.5x18x2.0				
12	100-2609	2	Bolt Flanged				
13	100-2610	4	Bolt Flanged				

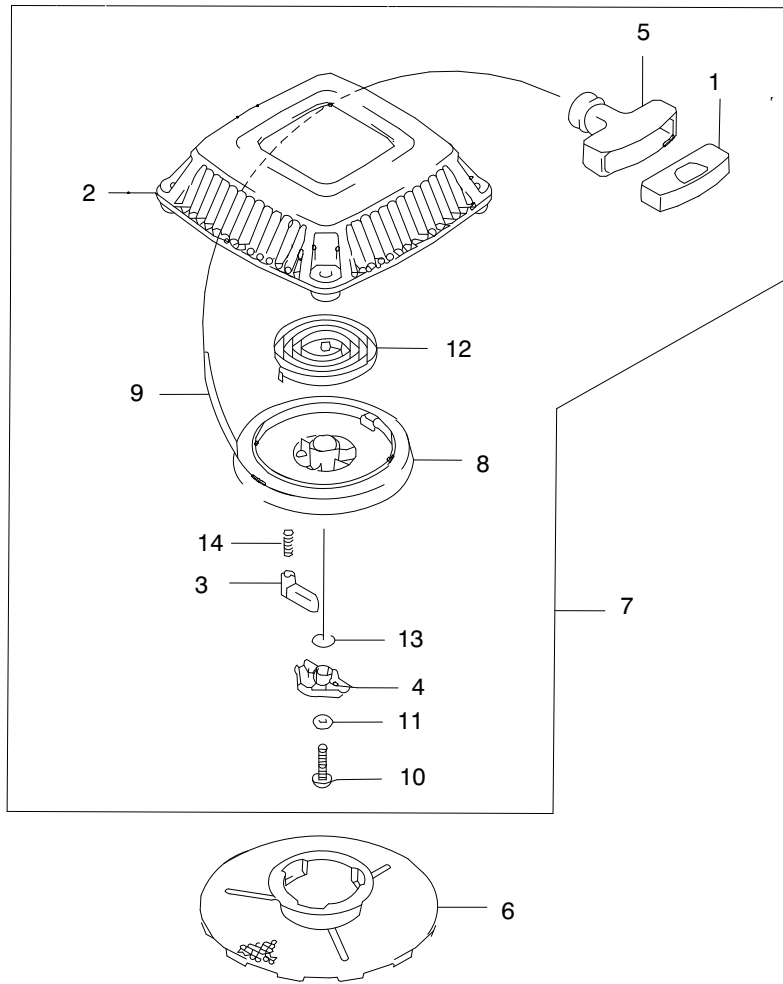
PROTOTYPE



Sheet No.:3I

Lubrication Equipment

Ref. No.	Part No.	Qty.	Description	Ref. No.	Part No.	Qty.	Description
1	Kw10010	1	Gasket				
2	100-2644	1	Gasket				
3	100-2687	1	Guide				
4	100-2645	1	Plate				
5	100-2643	1	Pump ASM Oil				
6	100-2646	1	Cover Pump				
7	100-2647	1	Rotor Pump				
8	100-2648	1	Pipe Complete				
9	100-2649	1	Filter Oil				
10	100-2688	1	Gauge				
11	95-9715	1	Joint				
12	100-2689	1	Filler				
13	100-2801	1	Ring O				
14	100-2802	1	Spring				
15	100-2803	1	Spring				
16	100-2804	6	Bolt-Flanged				
17	100-2805	2	Bolt-Flanged				
18	100-2806	1	Bolt-Flanged				
19	100-2807	1	Ball-Steel				
20	100-2690	1	O-Ring				

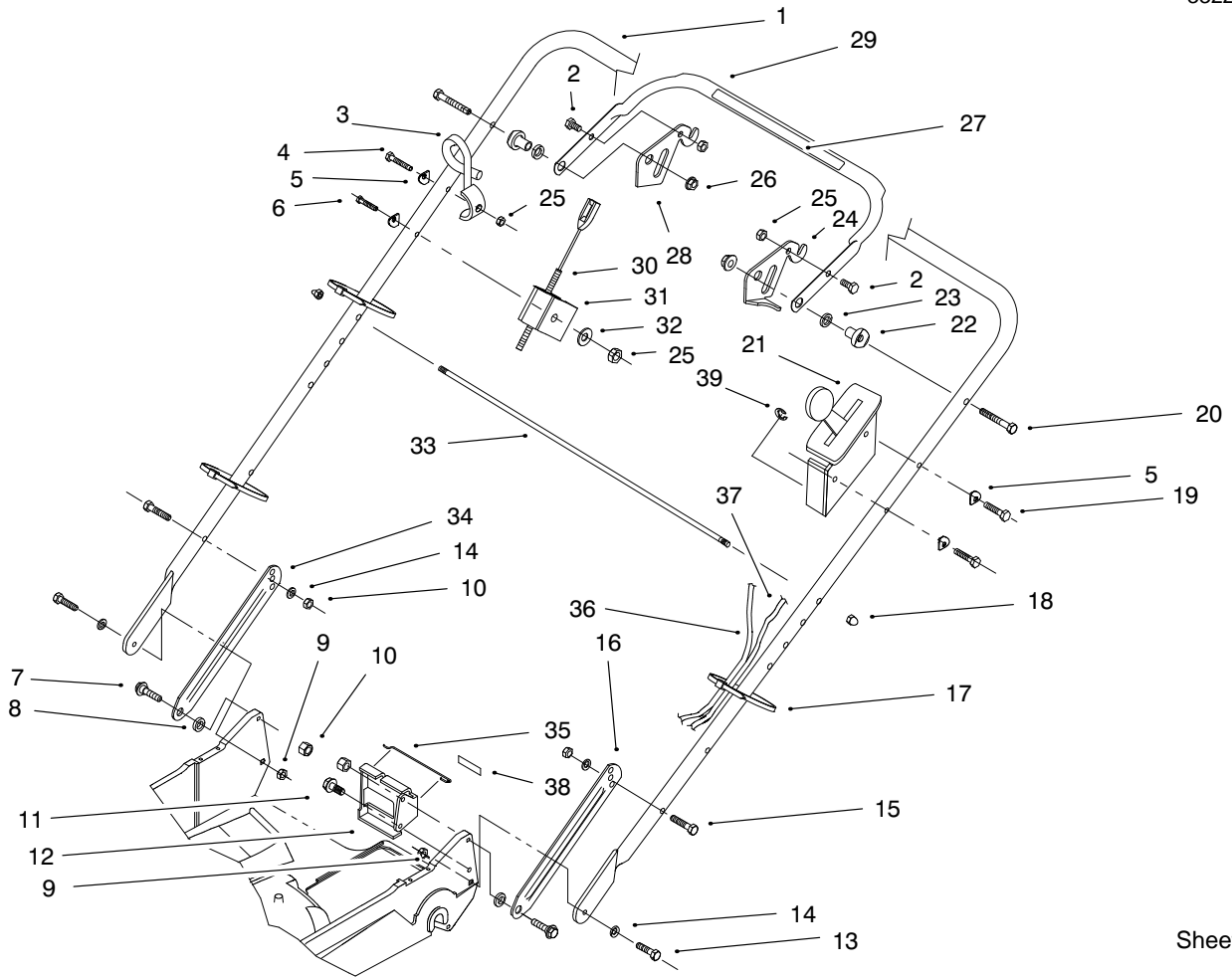


Sheet No.:3m

Starter

Ref. No.	Part No.	Qty.	Description
1	94-9044	1	Cap - Grip
2	100-2766	1	Holder
3	100-2767	1	Pawl Recoil Starter
4	100-2768	1	Retainer-Spring
5	100-2769	1	Grip Recoil Starter
6	100-2770	1	Pulley-Starting
7	100-2771	1	Starter-Recoil
8	100-2772	1	Reel Recoil Starter
9	100-2836	1	Rope Recoil 3.8x2610
10	100-2774	1	Screw 5x18
11	100-2775	1	Washer 5x12.8x1.2
12	100-2776	1	Spring Recoil
13	100-2777	1	Spring
14	93-8555	1	Spring-Return

Ref. No.	Part No.	Qty.	Description

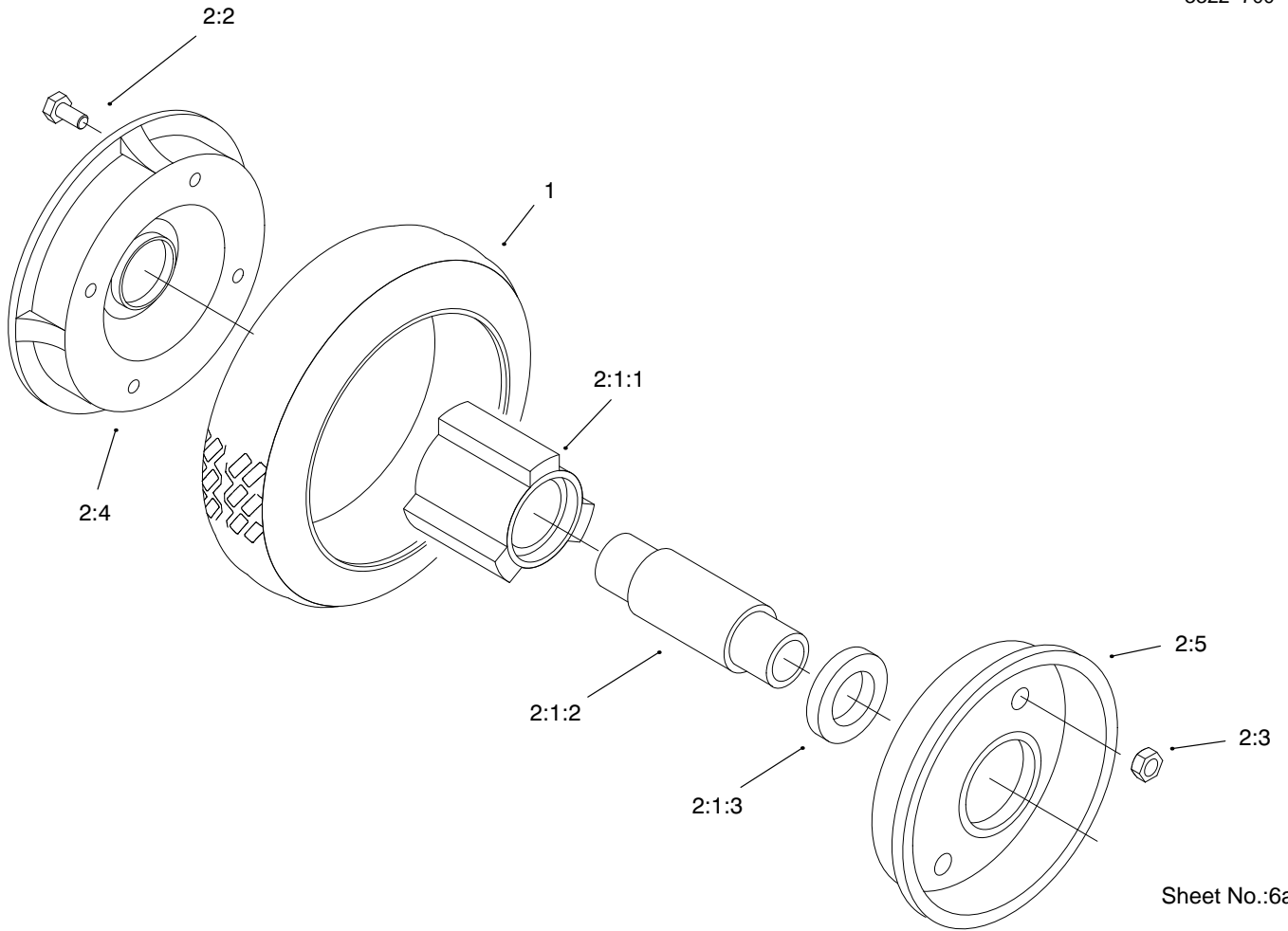


Sheet No.:4

Handle & Controls Assembly

Ref. No.	Part No.	Qty.	Description
1	98-2000-03	1	Handle
2	321-4	2	Screw-HH
3	46-8081	1	Guide-Rope
4	321-9	1	Screw-HH
5	3-7501	4	Washer
6	321-15	1	Screw-HH
7	27-7210	2	Screw-Shoulder
8	3-3287	2	Spacer-Handle Latch
9	3296-47	2	Nut-Lock Ni
10	3296-29	4	Nut-Lock Ni
11	32144-70	1	Screw-Taptite
12	74-1741-03	1	Brkt-Traction Adj. (Black)
13	322-6	2	Screw-HH
14	3290-456	4	Washer-Belleville
15	322-7	2	Screw-HH
16	84-8361-03	1	Latch-LH Handle
17	3290-378	4	Tie-Cable
18	32111-7	2	Nut-Cap
19	321-13	2	Screw-HH
20	322-11	2	Screw-HH
21	82-9952	1	Brkt-Throttle Control
22	49-1630	2	Spacer-Support
23	256-276	2	Spacer-Nylon
24	66-5350	1	Lever-Control
25	3296-42	4	Nut-Lock Ni

Ref. No.	Part No.	Qty.	Description
26	3296-58	2	Nut-Lock Ni
27	82-2380	1	Decal/Traction Control
28	77-5270	1	Lever-Control
29	61-8270-03	1	Bar-Control
30	99-6291	1	Cable-Brake
31	46-6980	1	Support-Cable
32	3256-22	1	Washer-Flat
33	48-2810	1	Rod-Bag Support
34	84-8401-03	1	Latch-RH Handle
35	46-7030	1	Retainer-Cable
36	74-1791	1	Cable-Traction
37	70-1061	1	Cable-Throttle
38	74-1970	1	Decal - Gear Position
39	32151-86	2	E-Ring - Throt & Tract



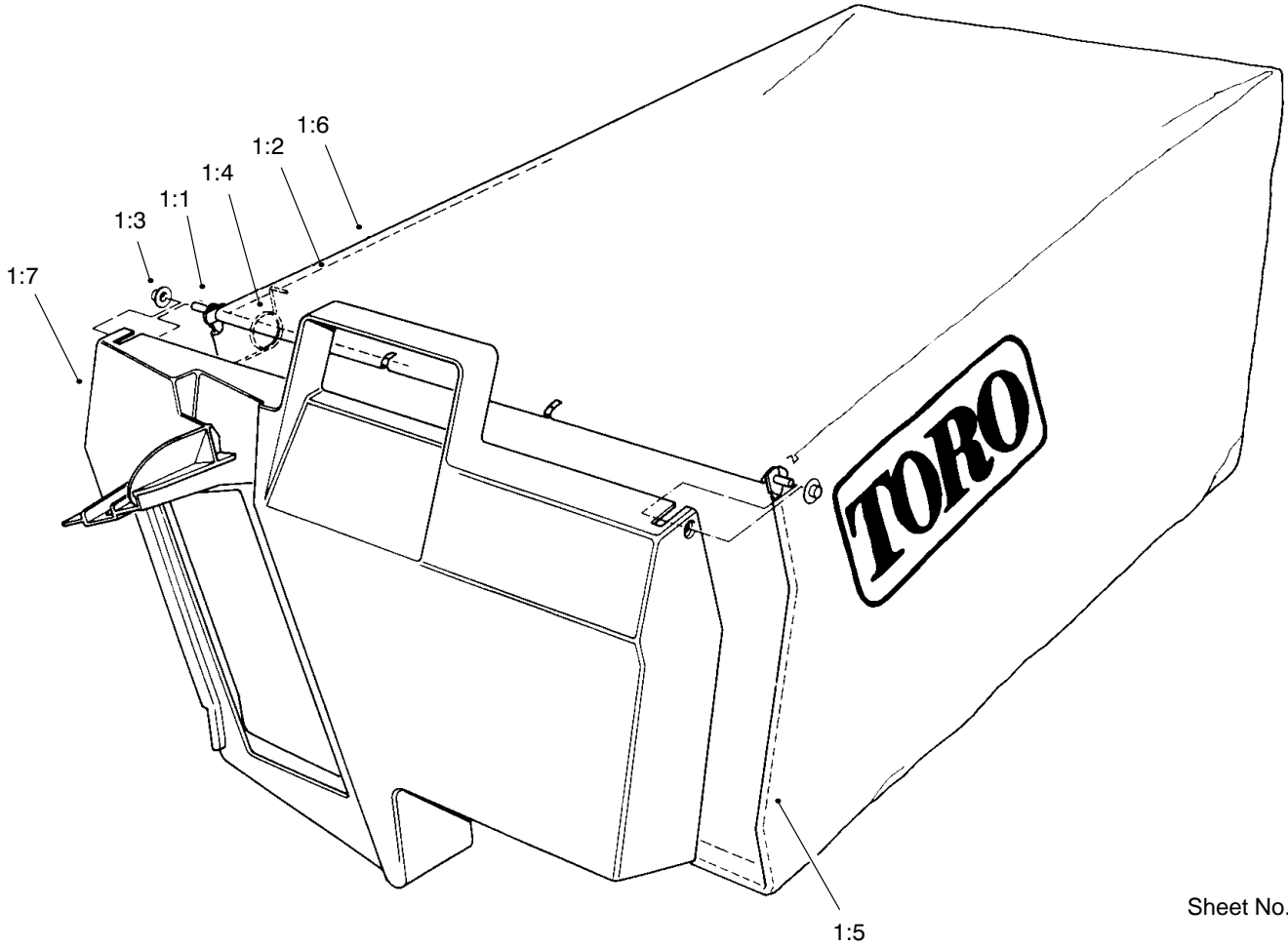
Sheet No.:6a

Rear Wheel & Tire Assembly

Ref. No.	Part No.	Qty.	Description
1	53-7740	1	Tire
2		1	Wheel ASM Sp *
2:1		1	Hub & Brg ASM
2:1:1	52-2410	1	Hub-Bearing Supt +
2:1:2	52-2440	1	Spacer-Bearing +
2:1:3	52-2450	2	Bearing-Wheel +
2:2	321-2	4	Screw-HH
2:3	3296-42	4	Nut-Lock Ni
2:4	53-7780-06	1	Plate-Wheel Half
2:5	92-4957-06	1	Wheel Half/Gear ASM

Ref. No.	Part No.	Qty.	Description

PROTOTYPE



Sheet No.:4a

Bagging Assembly

Ref. No.	Part No.	Qty.	Description
*	99-2535	1	Grass Bag Assy-Service Only
1:1	33-4820	1	Hinge-Bag Door
1:2	42-4030	1	Frame-Upper Bag
1:3	3290-422	2	Nut-Push
1:4	36-6910	2	Spring
1:5	42-4020	1	Frame-Bag
1:6	98-9222	1	ASM - Grass Bag
1:7	48-2840	1	Door-grass Bag

Ref. No.	Part No.	Qty.	Description

PROTOTYPE

Toro Part Number Index

Part No.	Page No.	Ref. No.	Qty.	Description
612066	19	13	2	Key Burg-Nort
3-3287	18	8	2	Spacer-Handle Latch
3-7501	18	5	4	Washer
Kw10010	16	1	1	Gasket
Kw10029	9	7	1	Bolt, Flanged 6x10
Kw10033	6	18	1	Bolt, Flanged 8x12
Kw10035	6	17	4	Bolt, Flanged 8x45
Kw10087	11	6	1	Cap Plug
Kw10297	12	22	1	Clip
13-5149	3	7	1	Input Shaft w/Zerk
14-9419	5	13	1	Blade w/Decal
25-7740	1	12	2	Knob-Arm
25-7740	19	18	2	Knob-Arm
26-0670	5	10	1	Screw-Blade
27-6232	1	9	2	Bolt-Wheel
27-6300	5	8	1	Key-Square
27-7210	18	7	2	Screw-Shoulder
29-9271	3	15	2	Gear-42 Tooth
29-9330	3	12	4	Key
29-9340	3	13	2	Collar-Shift
29-9570	3	17	2	Bushing-Yoke
29-9690	3	25	2	Washer
33-3208	1	18	1	Rod-Shield
33-4820	21	1:1	1	Hinge-Bag Door
36-4770	3	29	6	Washer
36-4780	3	37	6	Washer
36-4792	3	31	8	Washer-Thrust
36-6910	21	1:4	2	Spring
36-8070	19	1	1	V-Belt
37-7260	1	22	2	Screw-HH
39-5770	1	1:6	1	Decal - Cut Finger
39-6650	3	32	2	Gear-18t
39-6660	3	11	2	Pinion-Bevel
39-6720	3	20	2	Sleeve
39-6740	3	8	2	Pulley
39-7842	3	39	2	Key
39-9160	19	7	2	Gear-Pinion
39-9650	19	12	2	Spring-Comp
40-1940	1	3	4	Washer-Wheel Bolt
42-4020	21	1:5	1	Frame-Bag
42-4030	21	1:2	1	Frame-Upper Bag
42-4740	3	14	2	Gear-38 Tooth
44-0580	1	17	1	Shield - Trailing
46-3540	3	34	2	Gear
46-3550	3	33	2	Gear
46-3560	3	26	2	Gear
46-6810	1	39	1	Screw & Washer ASM
46-6811	1	31	1	Screw/Washer V
46-6980	18	31	1	Support-Cable
46-7030	18	35	1	Retainer-Cable
46-8081	18	3	1	Guide-Rope
46-8090	1	28	2	Screw-Plastite
47-2910	3	6	2	Washer-Thrust
47-6730	3	18	4	Seal-Oil
47-6730	19	16:1	1	Seal-Oil
47-7260	3	41	2	Seal
47-7270	3	23	4	Bearing
48-2060	3	28	4	Bearing-Roller
48-2060	19	16:2	1	Bearing-Roller
48-2170	19	4	2	Cap-End
48-2810	18	33	1	Rod-Bag Support
48-2840	21	1:7	1	Door-grass Bag

*Not Illustrated

Toro Part Number Index (cont.)

Part No.	Page No.	Ref. No.	Qty.	Description
49-1630	18	22	2	Spacer-Support
49-2040	1	42	4	Screw-Taptite
49-2040	3	24	14	Screw-Taptite
49-7700	19	15	2	Washer-Outer Thrust
49-8461-03	3	3	1	Bracket-Belt Guide
49-8740	1	19	1	Quadrant-LH Rear
49-8750	1	24	1	Quadrant-RH Rear
49-8760	1	13	1	Quadrant-LH Front
49-8770	1	43	1	Quadrant-RH Front
52-2410	4	2:1:1	1	Hub-Bearing Supt +
52-2410	20	2:1:1	1	Hub-Bearing Supt +
52-2440	4	2:1:2	1	Spacer-Bearing +
52-2440	20	2:1:2	1	Spacer-Bearing +
52-2450	4	2:1:3	2	Bearing-Wheel +
52-2450	19	16:3	1	Bearing-Wheel +
52-2450	20	2:1:3	2	Bearing-Wheel +
52-2480	1	8	2	Spacer-Wheel
52-2620	1	35	1	Label-Sp Grease
53-7720	1	10	2	Wheel & Tire ASM
53-7740	4	1	1	Tire
53-7740	20	1	1	Tire
53-7780-06	4	2:4	2	Plate-Wheel Half
53-7780-06	20	2:4	1	Plate-Wheel Half
53-7950	3	36	2	Shaft-Intermediate
55-8010	3	19	2	Sleeve-Gear
55-8020	3	21	2	Retainer-Key
60-8870	3	16	2	Yoke-Shift
61-8270-03	18	29	1	Bar-Control
61-8300	1	7	2	Pivot Arm Wa - Front
62-3830	19	6	2	Washer-Outer Thrust
65-5860	5	17	1	Crankshaft Protector As
66-5350	18	24	1	Lever-Control
66-7560	1	5	2	Front Spring Arm ASM
66-7561	19	17	2	Rear Spring Arm ASM
70-1061	18	37	1	Cable-Throttle
71-1280	1	1:7	1	Decal - Safety Instruct
71-9350	1	34	1	Bracket-Spring
74-1640	19	8	2	Cover-Wheel
74-1650	19	11	2	Spacer-Wheel Cover
74-1720	19	9	2	Wheel & Tire ASM Sp
74-1741-03	18	12	1	Brkt-Traction Adj. (Black)
74-1750-03	3	44	1	Brk-Traction Engage
74-1760	3	35	2	Gear-Bevel
74-1791	18	36	1	Cable-Traction
74-1810	19	3	2	Washer
74-1851	19	16	2	Pivot Arm Assembly
74-1861	1	20	1	Gear Case ASM (Service)
74-1861	3	*	1	Gear Case ASM (Service)
74-1880	3	9	2	Case-Upper Gear
74-1890	3	4	2	Shaft-Output
74-1920	3	2	2	Case-Lower Gear
74-1960	19	19	1	Lever-Shift
74-1970	18	38	1	Decal - Gear Position
76-4640	1	27:3	1	Latch-Disc. Plug +
76-4650	1	27:4	1	Grip-Latch
76-4660	1	33	1	Spring-Door
77-0500	1	27	1	Discharge Plug Assembly
77-5270	18	28	1	Lever-Control
80-3770	1	32	1	Spring-Door Ret
82-2380	18	27	1	Decal/Traction Control
82-9152	1	36	1	Tunnel-Discharge
82-9952	18	21	1	Brkt-Throttle Control

*Not Illustrated

Toro Part Number Index (cont.)

Part No.	Page No.	Ref. No.	Qty.	Description
84-8361-03	18	16	1	Latch-LH Handle
84-8401-03	18	34	1	Latch-RH Handle
92-1599-03	5	12	1	Stiffener-Blade
92-1720	1	1:3	1	Kicker - Front
92-1730	1	1:4	1	Kicker - R.h.
92-1750	1	1:2	1	Kicker - Rear, Sp
92-1779	1	1:8	1	Decal-Warning
92-4957-06	20	2:5	1	Wheel Half/Gear ASM
92-6316	19	16:5	1	Zerk - Special Drive
92-7988	1	46	1	Decal - Recycler
93-3154	1	29	1	Latch-Plate
93-7351	1	30	1	ASM - Discharge Door
93-8516	6	15	2	Pin
93-8526	13	13	1	Key
93-8527	13	14	2	Bolt-Rod
93-8533	7	11	2	Nut
93-8534	7	12	2	Nut
93-8549	6	28	2	Screw
93-8549	14	11	3	Screw
93-8555	17	14	1	Spring-Return
93-8568	11	21	1	Nut
93-8571	11	12	1	Key
93-8588	8	20	1	Spring
93-8595	8	14	1	Nut
93-8607	8	27	1	Pin-Snap
93-8608	8	12	1	Washer
93-8608	8	23	1	Washer
93-8611	8	10	1	Governor ASM
93-8631	8	13	3	Nut
93-8639	14	24	2	Washer
94-6842	8	15	1	Washer
94-9044	17	1	1	Cap - Grip
95-9715	16	11	1	Joint
95-9716	14	12	2	Screw
95-9837	8	24	1	Bolt - Flanged
95-9849	5	4	1	Clamp
95-9849	8	17	1	Clamp
95-9853	5	3	1	Bolt
95-9853	8	22	1	Bolt
98-2000-03	18	1	1	Handle
98-7139	1	1	1	Housing - Service
98-9222	21	1:6	1	ASM - Grass Bag
99-2535	21	*	1	Grass Bag Assy - Service Only
99-6279	5	9	1	Spacer - Blade Retainer
99-6283	5	14	1	Blade Retainer W.a.
99-6291	18	30	1	Cable - Brake
99-6297	5	5	1	Decal Engine
99-6298	1	21	1	Cover - Belt, Sp (Commercial)
99-6722	2	48	1	Guard Engine
99-6728	6	30	1	Oil Slinger
99-6729	6	31	1	Shaft
99-6730	6	32	1	Gasket
100-1586	5	18	1	Pulley - Driver
100-2600	15	1	1	Cover Upper
100-2601	15	4	3	Stud
100-2602	15	5	1	Stud
100-2603	15	6	4	Nut
100-2604	15	7	4	Nut 6mm
100-2605	15	9	4	Spacer 6.2x7.8x22
100-2606	15	8	4	Spacer 6.2x7.8x17
100-2607	15	10	1	Grommet
100-2609	6	21	4	Bolt Flanged

*Not Illustrated

Toro Part Number Index (cont.)

Part No.	Page No.	Ref. No.	Qty.	Description
100-2609	9	6	1	Bolt Flanged
100-2609	15	12	2	Bolt Flanged
100-2610	6	19	6	Bolt Flanged
100-2610	11	18	2	Bolt Flanged
100-2610	15	13	4	Bolt Flanged
100-2611	12	1	1	Gasket
100-2612	12	2	1	Gasket
100-2613	12	3	1	Gasket Carburetor
100-2614	12	4	1	Gasket Insulator
100-2615	12	5	1	Carburetor ASM
100-2616	12	6	1	Screw Pilot Air
100-2617	12	7	1	Chamber Float
100-2618	12	8	1	Valve Throttle
100-2619	12	9	1	Valve Float
100-2620	12	10	1	Float
100-2621	12	11	1	Shaft Carburetor Throttle
100-2622	12	12	1	Shaft Carburetor Choke
100-2623	12	13	1	Insulator
100-2624	12	14	1	Valve
100-2625	12	15	1	Limiter
100-2626	12	16	1	Nozzle Main
100-2627	12	17	1	Screw
100-2628	12	18	1	Screw
100-2629	12	19	2	Screw
100-2630	12	20	1	Collar
100-2631	12	21	1	Collar
100-2633	12	23	1	Pin
100-2634	12	24	1	Jet Main #62.5
100-2635	12	27	1	Jet Pilot #37.5
100-2636	12	28	3	Spring
100-2637	12	29	1	Seal
100-2638	12	30	1	Seal
100-2639	12	31	1	Collar
100-2640	12	32	1	Bolt
100-2641	12	33	1	Tube 4x7x125
100-2642	12	34	1	Screw Pan
100-2643	16	5	1	Pump ASM Oil
100-2644	16	2	1	Gasket
100-2645	16	4	1	Plate
100-2646	16	6	1	Cover Pump
100-2647	16	7	1	Rotor Pump
100-2648	16	8	1	Pipe Complete
100-2649	16	9	1	Filter Oil
100-2650	11	1	1	Plate
100-2651	11	2	1	Cover
100-2652	11	3	1	Cover
100-2653	11	4	1	Insulator
100-2654	11	5	1	Insulator
100-2656	11	7	1	Terminal
100-2657	11	8	1	Coil ASM Ignition
100-2658	11	9	1	Flywheel Complete
100-2659	11	10	1	Wire Lead
100-2660	11	11	1	Wire Lead L=300mm
100-2662	11	13	1	Plug-Spark Bpr5es(Ngk)
100-2663	11	14	1	Bolt 4x20
100-2664	11	15	1	Clamp
100-2665	11	16	1	Washer
100-2666	11	17	1	Bolt Upset
100-2668	11	19	1	Nut Hex
100-2669	11	20	1	Nut Hex
100-2671	9	8	1	Washer Plain S
100-2671	11	22	1	Washer Plain S

AROTOTYPE

*Not Illustrated

Toro Part Number Index (cont.)

Part No.	Page No.	Ref. No.	Qty.	Description
100-2672	13	1	1	Piston Engine
100-2673	13	2	1	Pin-Piston
100-2674	13	3	1	Ring Set Piston
100-2675	13	4	1	Ring Set Piston L0.25
100-2676	13	5	1	Ring Set Piston L0.50
100-2677	13	6	1	Piston Engine L0.25
100-2678	13	7	1	Piston Engine L0.50
100-2679	13	8	1	Crankshaft
100-2680	13	9	1	Rod ASM Connecting
100-2681	13	10	1	Rod ASM Connecting U/S=0.50
100-2682	13	11	1	Gear-Helical
100-2683	13	12	2	Ring-Snap
100-2687	16	3	1	Guide
100-2688	16	10	1	Gauge
100-2689	16	12	1	Filler
100-2690	16	20	1	O-Ring
100-2691	14	1	1	Cap Air Filter
100-2692	14	2	1	Element Air Filter
100-2693	14	3	1	Element Air Filter
100-2694	14	4	1	Element ASM Air Filter
100-2695	14	5	1	Bracket
100-2696	14	6	1	Gasket Intake Pipe
100-2697	14	7	1	Gasket Muffler
100-2698	14	8	1	Pipe-Intake
100-2699	14	9	1	Muffler Complete
100-2700	8	1	1	Lever
100-2701	8	2	1	Lever
100-2702	8	3	1	Link-Choke
100-2703	8	4	1	Link
100-2704	8	5	1	Arm-ASM
100-2705	8	6	1	Arm-Pivot
100-2706	8	7	1	Spring-Governor
100-2707	8	8	1	Panel-ASM Control
100-2708	8	9	1	Sleeve
100-2710	8	11	1	Panel-Control
100-2715	8	16	2	Washer 6x9x1.2
100-2717	8	18	1	Spring Link
100-2718	8	19	2	Collar 6x13x2.3
100-2724	8	25	2	Bolt-Upset-Wsp
100-2725	8	26	1	Screw-Pan
100-2727	7	1	1	Valve-Intake
100-2728	7	2	1	Valve-Exhaust
100-2729	7	3	2	Retainer-Valve Spring
100-2730	7	4	2	Arm-Rocker
100-2731	7	5	2	Tappet
100-2732	7	6	1	Guide
100-2733	7	7	2	Rod-Push
100-2734	7	8	1	Decompressor
100-2735	7	9	2	Spring-Engine Valve
100-2736	7	10	1	Camshaft-Complete
100-2739	7	13	3	Pin
100-2740	7	14	1	Spring
100-2741	7	15	2	Bolt
100-2742	6	1	1	Gasket-Head
100-2743	6	2	1	Head-Complete-Cylinder
100-2744	6	3	1	Gasket Rocker Case
100-2745	6	4	1	Case-Rocker
100-2746	6	5	1	Gasket Cover
100-2747	6	6	1	Gasket Crankcase Cover
100-2748	6	7	1	Plate
100-2749	6	8	1	Plate
100-2750	14	10	1	Cover Muffler

*Not Illustrated

Toro Part Number Index (cont.)

Part No.	Page No.	Ref. No.	Qty.	Description
100-2754	14	14	2	Spacer 6.2x7.8x8
100-2755	14	15	1	Tube
100-2756	14	16	1	Bolt
100-2757	14	17	1	Clamp
100-2758	14	18	1	Clamp
100-2759	14	19	2	Washer 7x21x2.3
100-2760	14	20	1	Washer 6.5x18x2.0
100-2760	15	11	4	Washer 6.5x18x2.0
100-2761	14	21	2	Bolt-Stud
100-2762	14	22	2	Bolt Upset Wp
100-2763	14	23	2	Screw Pan
100-2766	17	2	1	Holder
100-2767	17	3	1	Pawl Recoil Starter
100-2768	17	4	1	Retainer-Spring
100-2769	17	5	1	Grip Recoil Starter
100-2770	17	6	1	Pulley-Starting
100-2771	17	7	1	Starter-Recoil
100-2772	17	8	1	Reel Recoil Starter
100-2774	17	10	1	Screw 5x18
100-2775	17	11	1	Washer 5x12.8x1.2
100-2776	17	12	1	Spring Recoil
100-2777	17	13	1	Spring
100-2779	6	9	1	Cover
100-2780	6	10	1	Valve
100-2781	6	11	1	Valve
100-2782	6	12	1	Cover-Crankcase
100-2783	9	1	1	Bracket
100-2784	9	2	1	Band-Brake
100-2785	9	3	1	Lever-Brake
100-2786	9	4	1	Pin
100-2787	9	5	1	Spring
100-2791	9	9	1	Circlip-Type-E
100-2792	9	10	2	Pin Cotter
100-2793	15	2	1	Cover Lower
100-2794	15	3	1	Cover
100-2801	16	13	1	Ring O
100-2802	16	14	1	Spring
100-2803	16	15	1	Spring
100-2804	6	20	4	Bolt-Flanged
100-2804	10	17	2	Bolt-Flanged
100-2804	16	16	6	Bolt-Flanged
100-2805	16	17	2	Bolt-Flanged
100-2806	16	18	1	Bolt-Flanged
100-2807	16	19	1	Ball-Steel
100-2808	10	1	1	Gasket
100-2809	10	2	1	Guide
100-2810	10	3	1	Lever
100-2811	10	4	1	Filter Complete
100-2812	10	5	1	Filter Fuel
100-2813	10	7	1	Element-Breather
100-2814	10	6	1	Filter Fuel
100-2815	10	8	1	Tank Complete Fuel
100-2816	10	9	1	Cap-ASM-Tank
100-2817	10	10	1	Screw
100-2818	10	11	1	Clamp
100-2819	10	12	1	Tube
100-2820	10	13	2	Clamp
100-2821	10	14	1	Clamp
100-2822	10	15	2	Clamp
100-2823	10	16	1	Tube 4.8x10.3x433
100-2825	10	18	2	Screw-Pan-Wp
100-2835	5	7	3	Screw-Engine Mount

PROTOTYPE

*Not Illustrated

Toro Part Number Index (cont.)

Part No.	Page No.	Ref. No.	Qty.	Description
100-2836	17	9	1	Rope Recoil 3.8x2610
100-2840	6	13	1	O-Ring
100-2841	6	14	1	Ball Bearing
100-2842	6	16	1	Bolt Upset Wsp
100-2843	6	22	1	Washer 6x12x1.6
100-2844	6	23	1	Washer 5x16x0.8
100-2846	6	25	1	Tube
100-2847	6	26	2	Seal Oil
100-2848	6	27	2	Pin
100-2849	6	29	1	Crankcase Complete
100-2854	6	24	1	Plug
100-2855	6	33	1	Bolt Flanged
252-103	3	30	4	Bearing-Closed
256-276	18	23	2	Spacer-Nylon
257-3	1	6	2	Washer-Thrust
302-63	3	42	2	Zerk
321-2	4	2:2	4	Screw-HH
321-2	20	2:2	4	Screw-HH
321-4	18	2	2	Screw-HH
321-7	1	26	2	Screw-HH
321-9	18	4	1	Screw-HH
321-13	18	19	2	Screw-HH
321-15	18	6	1	Screw-HH
322-6	18	13	2	Screw-HH
322-7	18	15	2	Screw-HH
322-11	18	20	2	Screw-HH
323-6	2	49	2	Screw-HH
323-12	1	11	2	Screw-HH
323-13	19	10	2	Screw-HH
3253-22	5	11	1	Washer-Lock/Sp
3254-6	5	16	3	Washer-Lock/Int
3256-22	1	25	2	Washer-Flat
3256-22	18	32	1	Washer-Flat
3256-45	3	45	2	Washer-Flat
3257-1	3	27	4	Key-Woodruff
3285-19	3	22	2	Pin-Groove
3290-378	18	17	4	Tie-Cable
3290-422	21	1:3	2	Nut-Push
3290-456	18	14	4	Washer-Belleville
3295-35	1	27:1	1	Rivet-Alum
3296-5	3	10	2	Nut-Lock Ni
3296-6	1	2	2	Nut-Lock Ni
3296-29	18	10	4	Nut-Lock Ni
3296-39	2	50	2	Nut-Lock Ni
3296-42	1	23	2	Nut-Lock Ni
3296-42	4	2:3	4	Nut-Lock Ni
3296-42	18	25	4	Nut-Lock Ni
3296-42	20	2:3	4	Nut-Lock Ni
3296-47	18	9	2	Nut-Lock Ni
3296-58	18	26	2	Nut-Lock Ni
32111-7	18	18	2	Nut-Cap
32121-99	19	20	1	Pin-Coil
32144-70	5	15	3	Screw-Taptite
32144-70	18	11	1	Screw-Taptite
32144-86	2	47	4	Screw-HH
32144-111	1	1:5	6	Screw-Plask
32151-36	19	2	2	Ring-Retaining
32151-57	3	5	2	Ring-Retaining
32151-68	19	14	4	Ring-Retaining
32151-86	18	39	2	E-Ring - Throt & Tract
32152-2	1	4	2	Nut-Conelock

*Not Illustrated

Toro Part Number Index (cont.)

Part No.	Page No.	Ref. No.	Qty.	Description
32152-2	19	5	2	Nut-Conelock

PROTOTYPE