



MODEL NO. 04381

**OPERATOR
MANUAL
ADDENDUM**

GREENSMASTER 3200-D



CAUTION

Before servicing or making adjustments to the machine, stop engine and remove key from the switch.

IMPORTANT: This addendum supplements and/or replaces some information in Operator's Manual. Keep this addendum with the Operator's Manual for future reference.

MOUNT FRONT ROLLERS

- Loosely mount a anti-scalp roller and a pull link assembly to outer end of each front carrier frame with a roller shaft, spacer, washer and capscrew (Fig. 1). Make sure nylon bushing is in pull link.

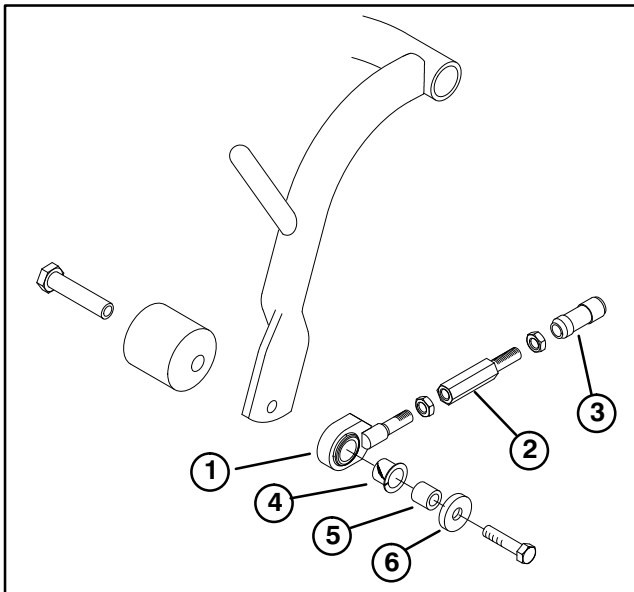


Figure 1

- | | |
|------------------------|------------------|
| 1. Pull link assembly | 4. Nylon bushing |
| 2. Pull link extension | 5. Spacer |
| 3. Ball joint receiver | 6. Washer |

- Make sure all tires are inflated to 8-12 p.s.i.

ADJUSTING CARRIER FRAME ROLLERS

- Adjust carrier frame rollers as follows:
 - Position traction unit on a level surface and lower cutting unit carrier frames to the floor.
 - Verify that there is 1/2" clearance between carrier frame rollers and floor.

- If an adjustment is required, loosen jam nut on carrier frame stop screw (Fig. 2) and rotate screw up or down to raise or lower carrier frame. Tighten jam nut after adjustment is attained.

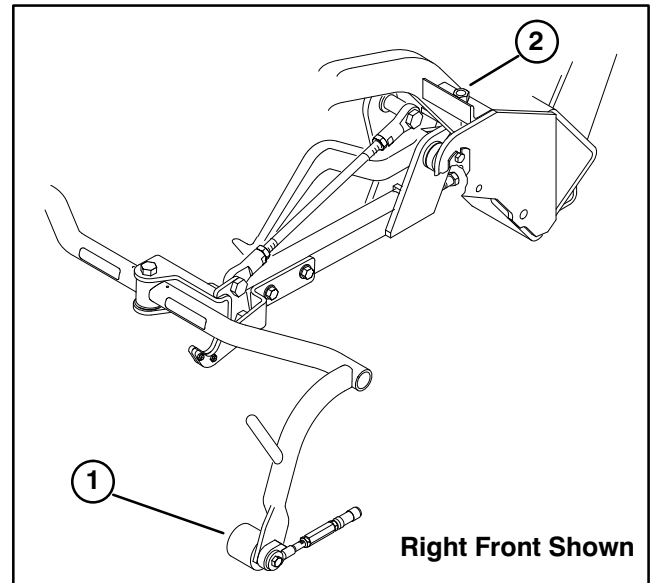


Figure 2

- Carrier frame roller
- Carrier frame stop screw

MODIFY CUTTING UNIT SHIELDS

- Modify cutting unit shields (Fig. 3) as follows:
 - Remove and discard front shield assembly. Also, remove and discard shield mounting studs and fasteners secured to each cutting unit side plate.
 - Bend grass shield side deflectors outward until flush with cutting unit side plates.
 - Adjust cut-off bar, mounted to inside of grass shield, so clearance between bar and reel is 0.060 inch. Assure bar and reel are equal distance apart across complete reel.

Note: If cutting unit is not equipped with a cut-off bar, obtain one from you local authorized Toro Distributor.

Note: Bar is adjustable to compensate for changes in turf conditions. Bar should be adjusted closer to reel when turf is extremely wet. By contrast, adjust bar further away from reel when turf conditions are dry. Bar should be adjusted when ever top shield height is changed.

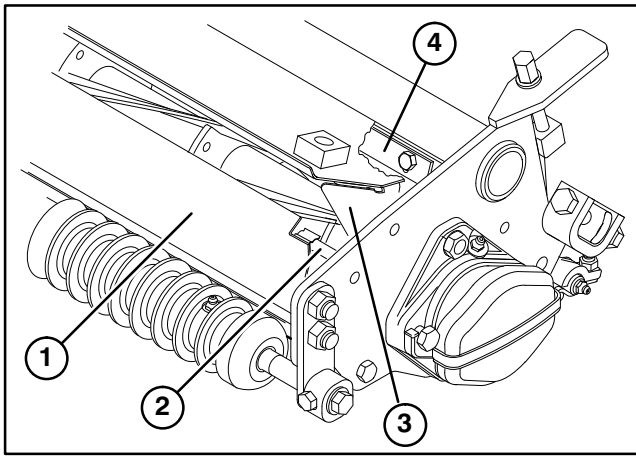


Figure 3

1. Front shield assembly
2. Front shield mounting studs
3. Grass shield side deflectors
4. Cut-off bar

MOUNT CUTTING UNITS

1. Thread a ball stud into each end of cutting unit front roller (Fig. 4).
2. Slide the cutting unit under the pull frame while hooking the hoop onto lift arm.

Note: If mounting cutting units equipped with groomer attachments, remove pull arm extension and rear jam nut from each pull link assembly.

3. Slide sleeve back on each ball joint receiver and hook onto cutting unit ball studs (Fig. 4).

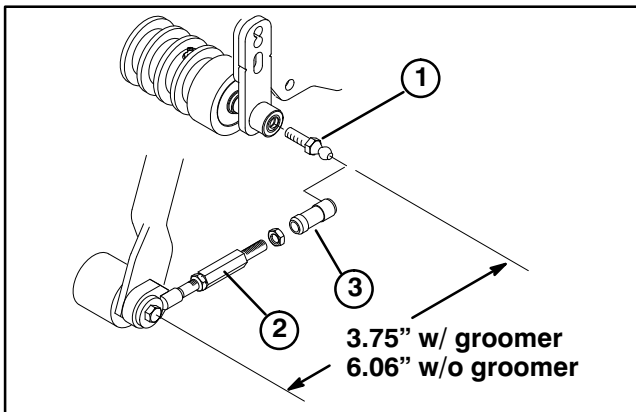


Figure 4

1. Ball stud
2. Pull arm extension
3. Ball joint receiver

Note: Pull link assemblies are pre-set at the factory. If they ever need to be disassembled, re-assemble to the dimensions shown in figure 4.

4. Mount basket onto carrier frame.
5. Adjust pull links until there is 1/4" to 3/8" clearance between the lip of the basket and the reel blades. Make sure the basket lips are equidistant from the reel blades all the way across the reel blades.

ADJUSTING TRANSPORT PLATES

1. Check transport plate (Fig. 5) operation and adjust, if required, as follows:

A. Verify that the distance from the top of the carrier frame adjusting screw (Fig. 5) and back of carrier frame is 7/8".

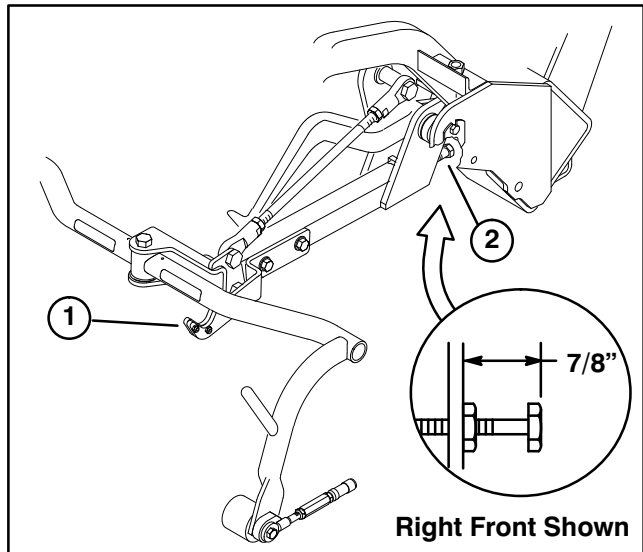


Figure 5

1. Transport plate
2. Adjusting screw

- B. Raise cutting units to transport position.
- C. Check to assure each carrier frame is resting in center of cradle on transport plate.
- D. If carrier frame is not resting in center of cradle, on transport plate, loosen jam nut on carrier frame adjusting screw (Fig. 5) and rotate screw out ward until carrier frame rests on transport plate when in transport position. Tighten jam nut after adjustment is attained.

Note: Adjusting rods are pre-set at the factory. If rods ever need to be disassembled, re-assemble to the dimensions shown in figure 6 .

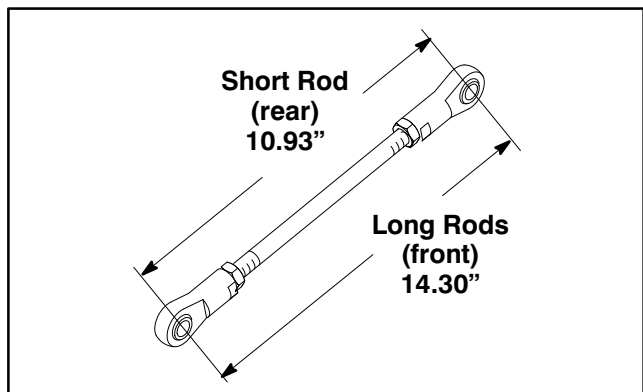


Figure 6