



Counterweight for Dingo Traction Units

Models 22417 and 22715

INSTALLATION INSTRUCTIONS

Loose Parts

DESCRIPTION	QTY.	USE
Counterweight	1	Install on traction unit
Pin	1	
Lynch pin (not available with all counterweights)	1	

Installing the Counterweight

- Slide the counterweight onto the operator platform (Fig. 1).

Note: The counterweight for diesel traction units with the battery mounted on the operator platform differs from Figure 1 in that it has a cutout area that fits around the battery.

- Secure the counterweight with the pin and lynch pin (Fig. 1).

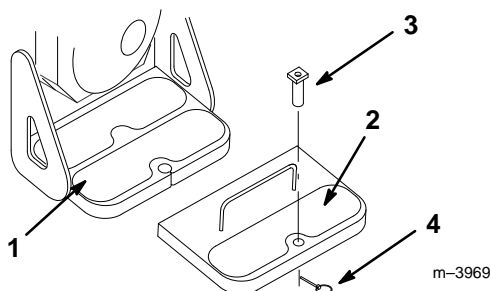


Figure 1

- | | |
|----------------------|--------------|
| 1. Operator platform | 3. Pin |
| 2. Counterweight | 4. Lynch pin |

Note: When using the counterweight, the rated lift capacity of the traction unit increases by about 110 lbs.

Removing the Counterweight

- Remove the pin from the back of the counterweight and slide it off of the platform.
- Store the counterweight in a clean dry area, and cover it to keep it clean.

Using the Counterweight

The counterweight can be used any time you will be carrying a heavy load or attachment with the traction unit. Several attachments are heavy enough that they require the use of the counterweight. Refer to the attachment operator's manual for recommendations on using the counterweight.