



Count on it.

Form No. 3423-628 Rev B

Parts Catalog

Loader Selector Valve Outcross 9060 Series Traction Unit Model No. 07526



Ordering Replacement Parts

To order replacement parts, please supply the part number, the quantity, and the description of each part desired.

Understanding Reference Numbers

Each identified part in an illustration has a reference number. The reference number for a part also appears in the parts list, along with other information about the part.

This catalog uses two special reference number formats, one to indicate parts in a service assembly and another to indicate the quantity of a given part in an illustration.

Service Assembly Reference Numbers

Parts in service assemblies have reference numbers in the form a:b. The a represents the reference number of the entire service assembly and the b represents a sequential number unique to each part within the service assembly.

For example, a wheel assembly might be identified by reference number 6, the tire by 6:1, the valve by 6:2, and the wheel by 6:3. When you order the assembly identified by reference number 6, you receive all parts identified by reference numbers 6:1, 6:2, and 6:3. However, you may also order any part individually. Reference numbers of this type appear in illustration and in parts lists.

Reference Numbers Indicating Quantity

In an illustration, if a reference number indicates more than one part, the reference number has the form nX y. The n represents the quantity of the part, the X is the multiplication symbol, and the y represents the reference number.

For example, in an illustration, the reference number 2X 37 means that two of the parts identified by reference number 37 are indicated.

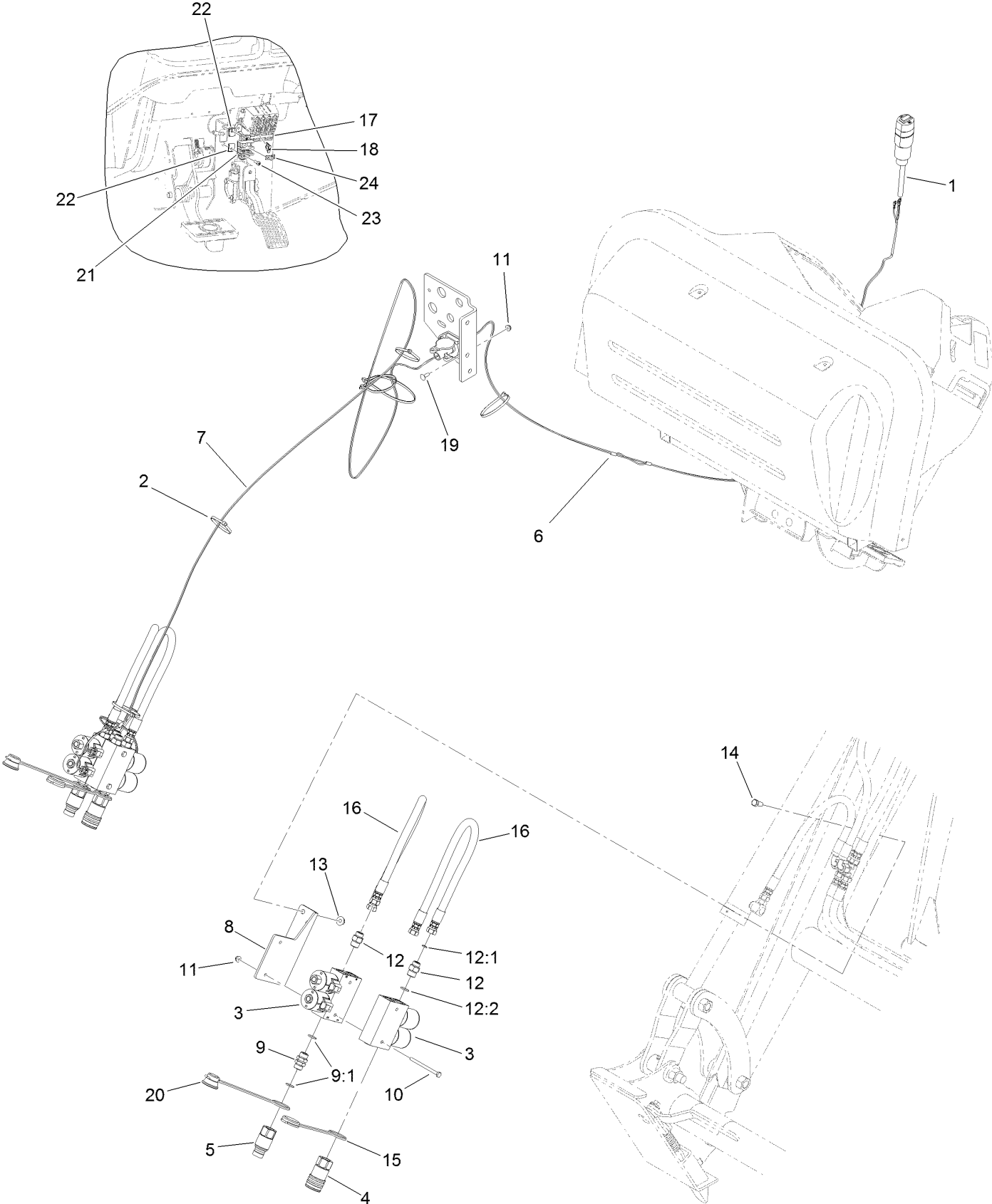
Contents

Loader Selector Valve Assembly 4

Joystick Assembly No. 138-3975 6

Hydraulic Valve Assembly No. 131-5644 8

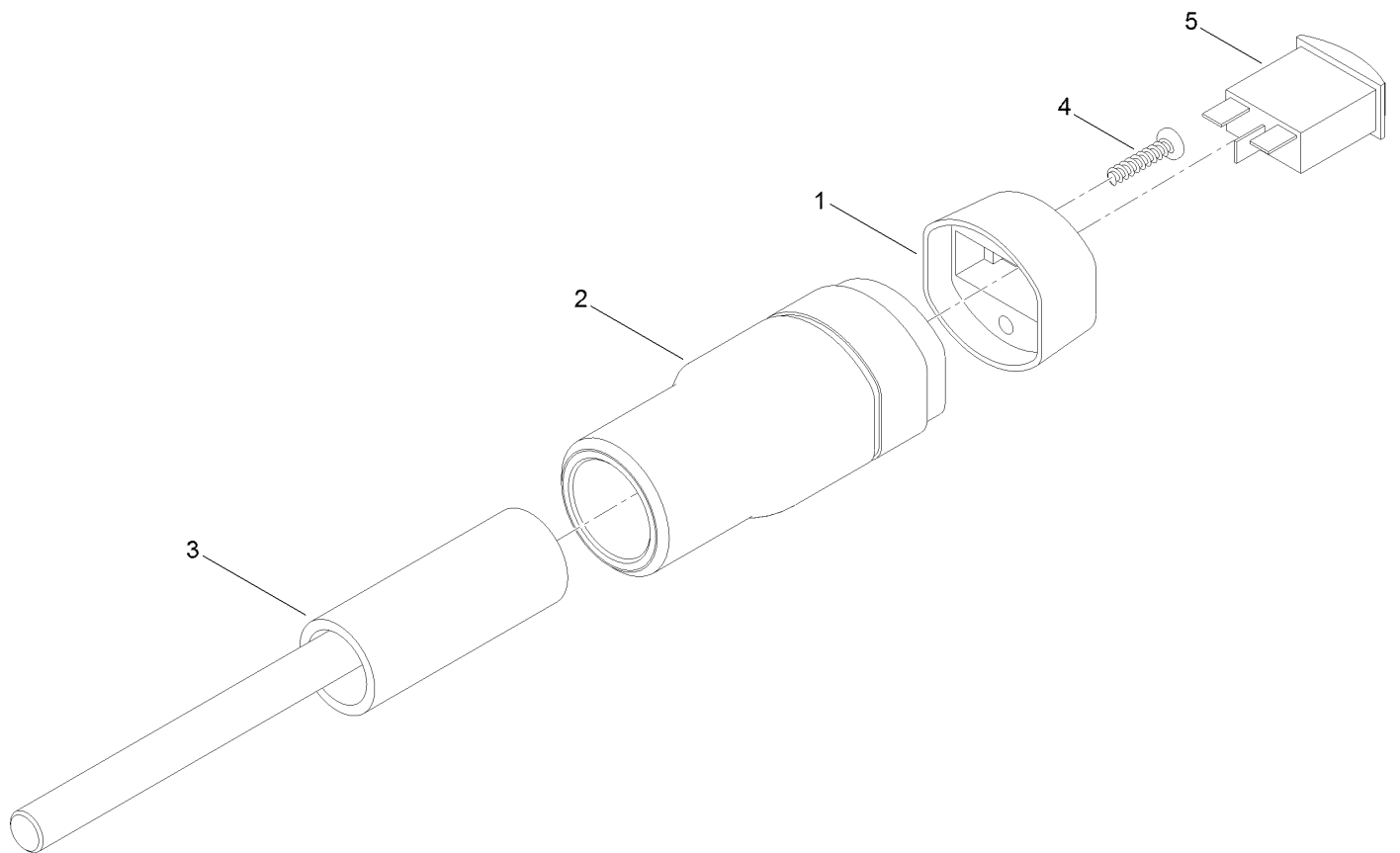
Loader Selector Valve Assembly



Loader Selector Valve Assembly (continued)

<i>Ref.</i>	<i>Part Number</i>	<i>Qty.</i>	<i>Description</i>	<i>Ref.</i>	<i>Part Number</i>	<i>Qty.</i>	<i>Description</i>
1	138-3975	1	Joystick	12:1	237-22	1	O-Ring
2	3290-379	12	Tie-Cable	12:2	237-79	1	O-Ring
3	131-5644	2	Valve-Selector	13	104-8301	2	Nut-HF, NI
4	138-4151	1	Coupler-Quick Conn, Flat Face	14	323-5	2	Screw-HH
5	138-4150	1	Nipple-Quick Conn, Flat Face	15	138-4153	1	Cap-Dust, Coupler
6	122-1382	1	Harness-Wire, Loader	16	133-2266	2	Hose ASM
7	122-1383	1	Harness-Wire, Loader	17	92-2641	1	Block-Fuse
8	138-3840-03	1	Angle-Valve	18	218-578	1	Fuse-Blade, 10 Amp
9	95-3209	2	Fitting-Thread, Straight	19	3229-1	2	Bolt-CARR
9:1	237-79	2	O-Ring	20	138-4152	1	Dust Cap-Nipple
10	321-19	2	Screw-HH	21	42862	1	Block-Terminal, Ground
11	104-7201	4	Nut-HF	22	120-6686	2	Nut-Clip, U
12	340-3	4	Fitting-Straight	23	104-2408	2	Screw-HSBH
				24	42863	1	Strip-Jumper

Joystick Assembly No. 138-3975

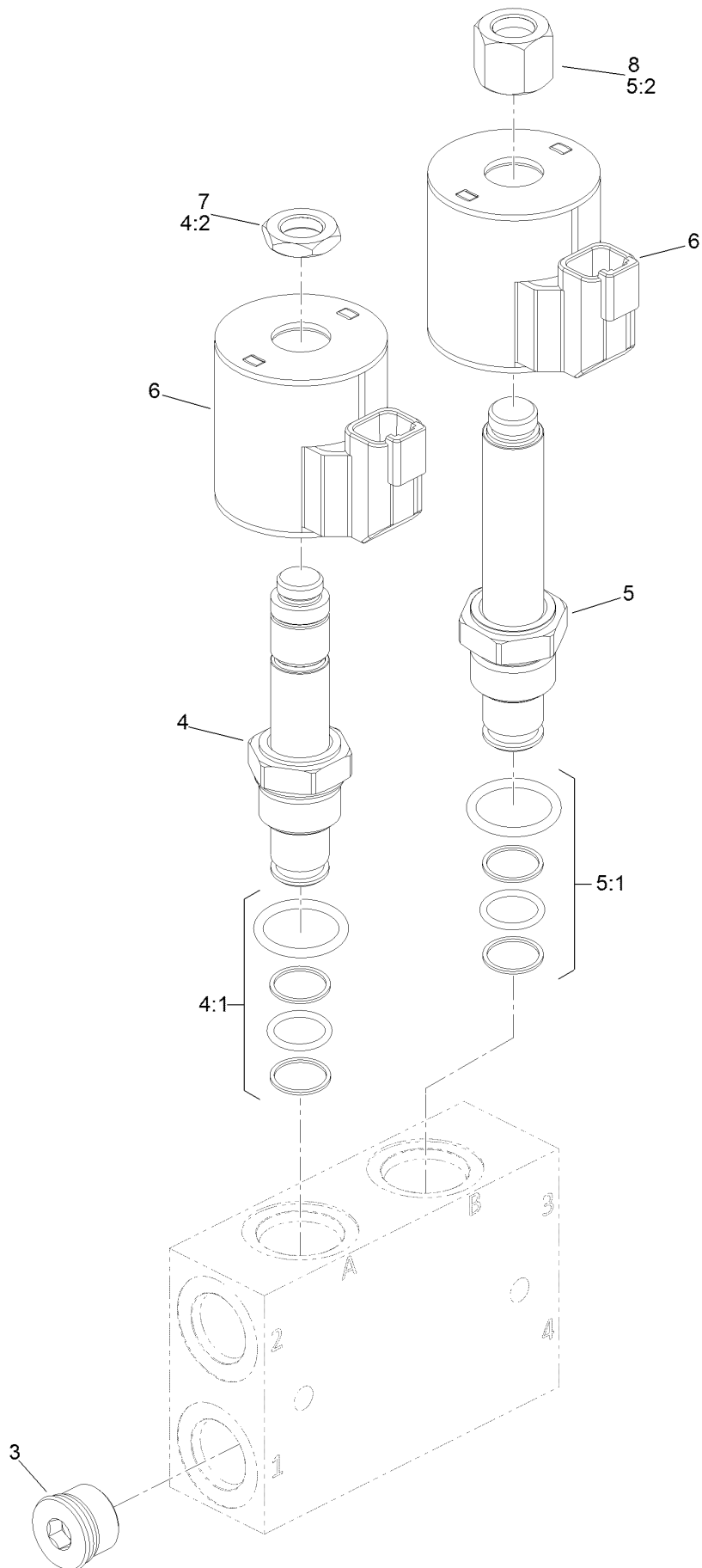


Joystick Assembly No. 138-3975 (continued)

<i>Ref.</i>	<i>Part Number</i>	<i>Qty.</i>	<i>Description</i>
1	121-3399	1	Cap-Switch
2	125-2662	1	Case ASM
3	138-3971-03	1	Handle ASM

<i>Ref.</i>	<i>Part Number</i>	<i>Qty.</i>	<i>Description</i>
4	94-4496	2	Screw-PPH
5	125-2702	1	Switch, Spst (On)-Off-On

Hydraulic Valve Assembly No. 131-5644



Hydraulic Valve Assembly No. 131-5644 (continued)

<i>Ref.</i>	<i>Part Number</i>	<i>Qty.</i>	<i>Description</i>
3	106-1027	1	Plug
4	110-2632	1	Valve-Solenoid
4:1	110-2633	1	Seal Kit
4:2	130-8181	1	Nut-Coil (1/2-20 Unf-2B)
5	110-2631	1	Valve-Solenoid

<i>Ref.</i>	<i>Part Number</i>	<i>Qty.</i>	<i>Description</i>
5:1	110-2633	1	Seal Kit
5:2	110-2634	1	Nut-Coil
6	119-4619	2	Coil-Solenoid
7	110-2634	1	Nut-Coil
8	130-8181	1	Nut-Coil (1/2-20 Unf-2B)

Notes:

Notes:



Count on it.