



Z-Master<sup>™</sup>

**250 Series**

**Z255**

**with 52" Side  
Discharge Mower**

Model No. 74204 – 994000 & Up

---

PROTOTYPE

**Parts Catalog**

## ORDERING REPLACEMENT PARTS

To order replacement parts, please supply: the part number, the quantity, and the description of each part desired.

## Contents

| Description                                 | Page | Description                               | Page |
|---|------|---|------|
| Front Frame Assembly .....                  | 1    | Shields And Clutch Assembly .....         | 9    |
| Caster And Wheel Assembly .....             | 2    | Idler Assembly .....                      | 10   |
| Rear Frame And Wheel Assembly .....         | 3    | Electrical System Assembly .....          | 11   |
| Brake And Wheel Hub Assembly .....          | 4    | Frame And Deck Assembly .....             | 12   |
| Control Panel Assembly .....                | 5    | Deck, Deflector And Roller Assembly ..... | 13   |
| Hydraulic System Assembly .....             | 6    | Spindle And Pulley Assembly .....         | 14   |
| Hydraulic System Assembly (Continued) ..... | 7    | Belt And Idler Arm Assembly .....         | 15   |
| Tank And Fuel Lines Assembly .....          | 8    | <b>Note:</b>                              |      |

## Part Description Abbreviations

Part descriptions in this catalog may include the following abbreviations.

| Abbreviation | Meaning                | Abbreviation | Meaning                           |
|--------------|------------------------|--------------|-----------------------------------|
| AR .....     | as required            | HWHTF .....  | hex washer head<br>thread forming |
| ASM .....    | assembly               | INC .....    | incorporated                      |
| CARR .....   | carriage               | LH .....     | left hand                         |
| DEG .....    | degrees                | PH .....     | pan head                          |
| FH .....     | flat head              | PPH .....    | Phillips pan head                 |
| GA .....     | gauge                  | PTO .....    | power take off                    |
| HF .....     | hex flange             | RH .....     | right hand                        |
| HFW .....    | hex flange washer      | SFH .....    | slotted fillister head            |
| HH .....     | hex head               | SH .....     | square head                       |
| HHF .....    | hex head flange        | SHWH .....   | slotted hex washer head           |
| HHST .....   | hex head self tapping  | SPH .....    | slotted pan head                  |
| HJ .....     | hex jam                | STD .....    | standard                          |
| HOC .....    | height-of-cut          | TAP .....    | self tapping                      |
| HS .....     | hex socket             | TH .....     | truss head                        |
| HSBH .....   | hex socket button head | TTH .....    | Torx truss head                   |
| HSFH .....   | hex socket flat head   | WH .....     | wing head                         |
| HSH .....    | hex socket head        |              |                                   |
| HWH .....    | hex washer head        |              |                                   |

## Important Format Explanations

This catalog uses special formats to convey information in illustrations and parts lists. Specifically, one format is used in conjunction with service assemblies and another with quantities associated with reference numbers.

### Service Assemblies

Parts within service assemblies have reference numbers in the form X:Y. X is the reference number of the service assembly and Y is a sequential number unique to each part within the service assembly.

For example, a wheel assembly might be identified by reference number 6, the tire by 6:1, the valve by 6:2, and the wheel by 6:3. When you order the assembly identified by reference number 6, you receive all parts identified by reference numbers 6:1, 6:2, and 6:3. However, you may also order any part individually.

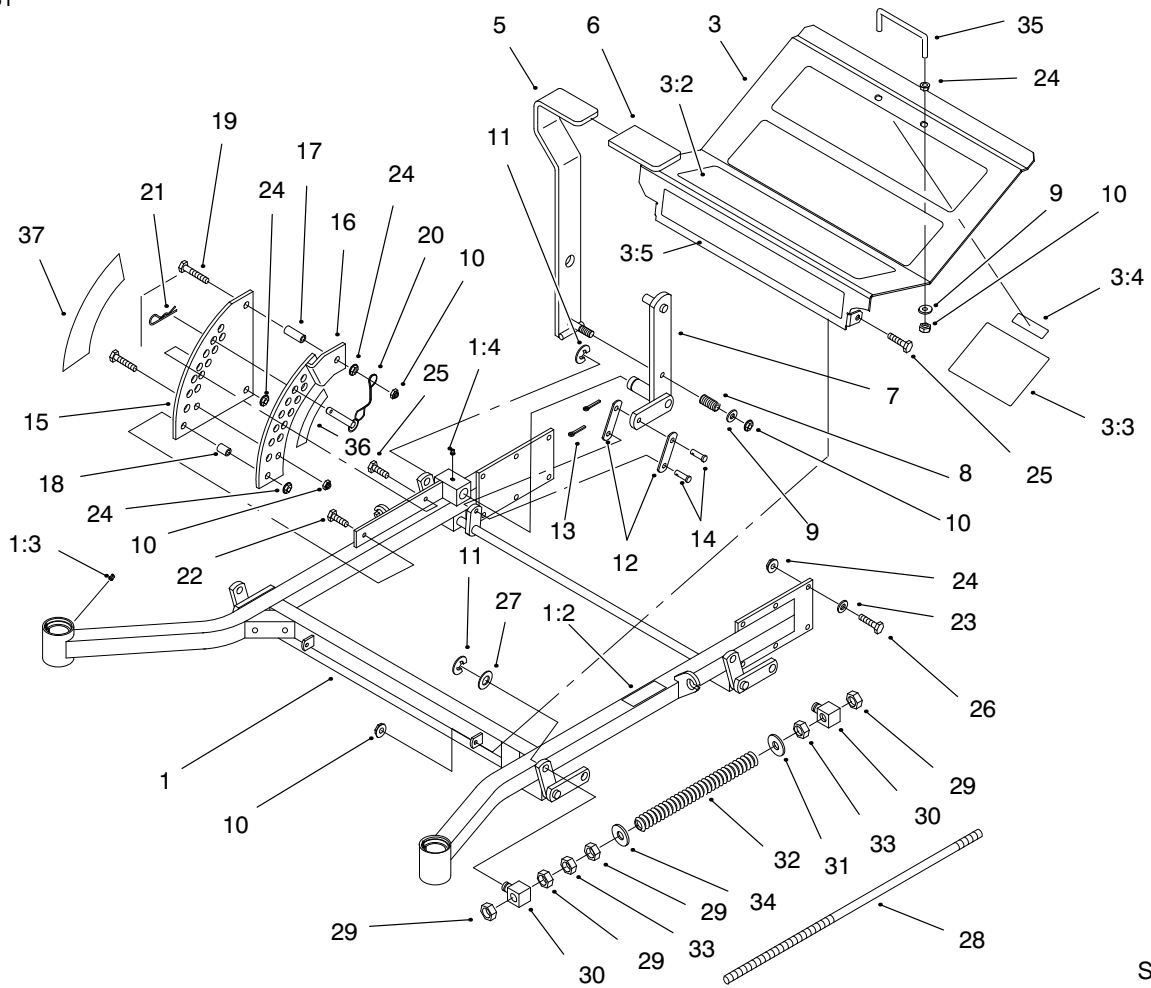
Reference numbers of this type appear in part lists and as callouts in illustrations.

## **Reference Numbers with Quantities**

Illustrations may have a quantity in parentheses next to a reference number, in the form  $X (Y)$ .  $X$  is the reference number.  $Y$  in parentheses is the quantity of the part identified by the reference number.

For example, the illustration callout 4 (2) indicates that two parts are used in that instance.

*PROTOTYPE*



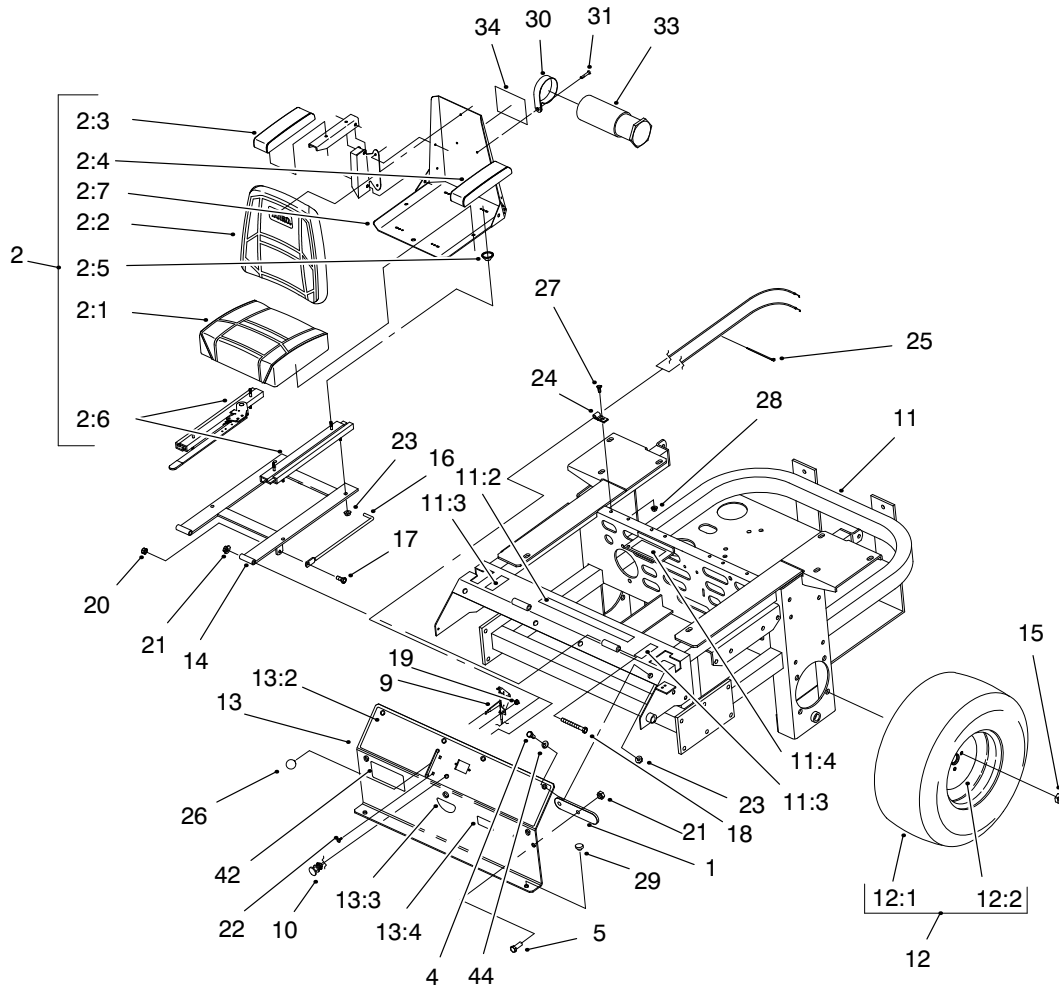
Sheet No.:2

## Front Frame Assembly

| Ref. No. | Part No. | Qty. | Description         |
|----------|----------|------|---------------------|
| 1        | E634861  | 1    | Frame ASM           |
| 1:2      | E633818  | 1    | Decal               |
| 1:3      | E811010  | 2    | Plug-Caster Swivel  |
| 1:4      | 320-19   | 5    | Fitting - Grease    |
| 3        | 99-4622  | 1    | Floorpan ASM        |
| 3:2      | E633553  | 3    | Pad - Antiskid      |
| 3:3      | E633766  | 1    | Decal-Check         |
| 3:4      | 98-5954  | 1    | Decal-Cover Missing |
| 3:5      | E633737  | 1    | Decal- Z-Master     |
| 5        | E632324  | 1    | Lift Lever ASM      |
| 6        | E633295  | 1    | Grip-Lift Lever     |
| 7        | E632219  | 1    | Arm-Deck-Lift       |
| 8        | E633325  | 1    | Spring-Compression  |
| 9        | 3256-24  | 3    | Washer-Flat         |
| 10       | 32146-2  | 7    | Nut-Lock Ni         |
| 11       | E808505  | 5    | Ring-Snap           |
| 12       | E633068  | 2    | Arm-Deck Lift       |
| 13       | 3272-10  | 2    | Pin-Cotter          |
| 14       | E808284  | 2    | Pin-Clevis          |
| 15       | E633889  | 1    | Plate - Deck Lift   |
| 16       | E632899  | 1    | Plate-Deck Lift     |
| 17       | E633082  | 1    | Bushing-Lift Lever  |
| 18       | E633080  | 1    | Bushing-Lift Lever  |
| 19       | 323-13   | 1    | Screw-HH            |
| 20       | E633097  | 1    | Pin-Hitch w/Lanyard |
| 21       | E806005  | 1    | Hairpin             |

| Ref. No. | Part No. | Qty. | Description        |
|----------|----------|------|--------------------|
| 22       | 323-9    | 2    | Screw-HH           |
| 23       | 98-5975  | 12   | Washer             |
| 24       | 3290-357 | 17   | Nut-Lock           |
| 25       | 323-6    | 3    | Screw-HH           |
| 26       | 323-7    | 12   | Screw-HH           |
| 27       | 3256-29  | 4    | Washer-Flat        |
| 28       | E633096  | 2    | Rod-Deck Lift      |
| 29       | 3217-11  | 8    | Nut-Hex            |
| 30       | E633441  | 4    | Swivel-Deck Mount  |
| 31       | 3256-7   | 2    | Washer-Flat        |
| 32       | E653009  | 2    | Spring-Lift Assist |
| 33       | 3218-6   | 4    | Nut-Jam            |
| 34       | 3256-27  | 2    | Washer-Flat        |
| 35       | E633587  | 1    | Handle             |
| 36       | E633706  | 1    | Decal-Deck Height  |
| 37       | E633345  | 1    | Decal-Deck Height  |



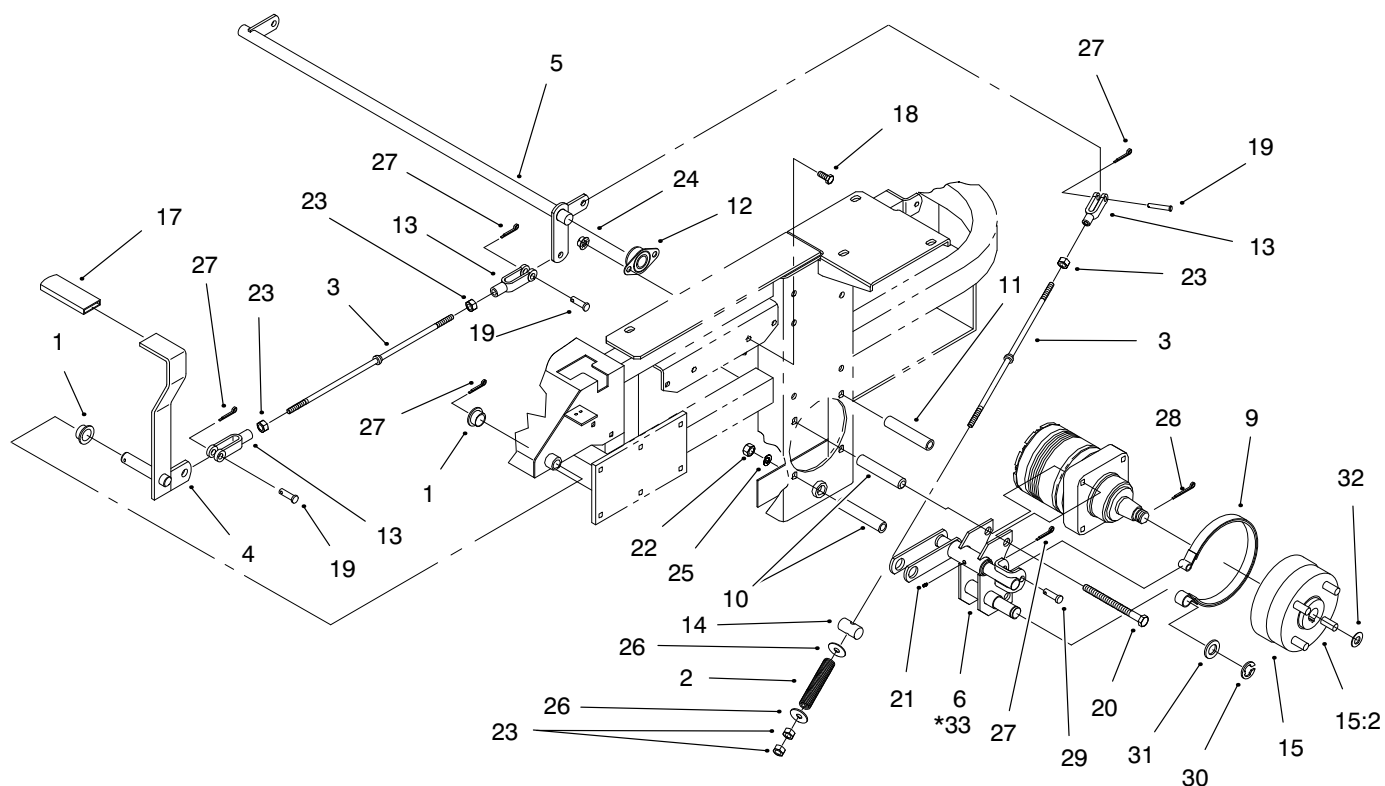


Sheet No.:4

## Rear Frame And Wheel Assembly

| Ref. No. | Part No. | Qty. | Description                 |
|----------|----------|------|-----------------------------|
| 1        | E633964  | 1    | Stop – Park Brake           |
| 2        | E633705  | 1    | Seat ASM w/Armrest          |
| 2:1      | E543407  | 1    | Cushion–Seat                |
| 2:2      | E633709  | 1    | Cushion–Backrest            |
| 2:3      | E633710  | 1    | Armrest – RH                |
| 2:4      | E633711  | 1    | Armrest – LH                |
| 2:5      | E543401  | 4    | Spacer–Track                |
| 2:6      | E643255  | 1    | Track–Locking, 4”           |
| 2:7      | E633859  | 1    | Frame–Seat                  |
| 4        | 322–3    | 8    | Screw–HH                    |
| 5        | 323–6    | 2    | Screw–HH                    |
| 9        | E633696  | 1    | Cable–Throttle              |
| 10       | E603336  | 1    | Control–Choke,<br>Push–Pull |
| 11       | 99–4624  | 1    | Frame ASM                   |
| 11:2     | E513747  | 1    | Decal–Battery               |
| 11:3     | E633354  | 2    | Decal–Motion Control        |
| 11:4     | E513929  | 1    | Decal–Drive Release         |
| 12       | E633007  | 2    | Wheel & Tire ASM            |
| 12:1     | E633008  | 1    | Tire                        |
| 12:2     | E633009  | 1    | Wheel                       |
| 13       | 99–4623  | 1    | Console ASM                 |
| 13:2     | 99–4611  | 1    | Decal–Control Panel         |
| 13:3     | E633346  | 1    | Decal–Fuel Valve            |
| 13:4     | 98–4387  | 1    | Decal – Ear Protection      |
| 14       | E632187  | 1    | Frame–Seat                  |

| Ref. No. | Part No. | Qty. | Description              |
|----------|----------|------|--------------------------|
| 15       | E513011  | 1    | Nut–Wheel                |
| 16       | E633293  | 1    | Rod–Seat Holdup          |
| 17       | 322–5    | 1    | Screw–HH                 |
| 18       | 323–21   | 2    | Screw–HH                 |
| 19       | 32146–18 | 2    | Nut–Lock                 |
| 20       | 32146–4  | 2    | Nut–Lock Ni              |
| 21       | 32146–2  | 4    | Nut–Lock Ni              |
| 22       | E807513  | 2    | Bolt–CARR                |
| 23       | 32128–20 | 12   | Nut–Hex Flange           |
| 24       | E513762  | 1    | Clip                     |
| 25       | E303335  | 1    | Tie–Plastic              |
| 26       | E513592  | 1    | Knob–Ball, Red           |
| 27       | 321–4    | 1    | Screw–HH                 |
| 28       | 32128–33 | 1    | Nut–Hex Flange           |
| 29       | E513658  | 2    | Bumper–Catcher,<br>Grass |
| 30       | 2412–120 | 2    | R Clamp                  |
| 31       | 32104–76 | 2    | Screw–Acorn Slot         |
| 33       | 74–0720  | 1    | Tube–Manual              |
| 34       | 93–7340  | 1    | Decal–Toro               |
| 42       | E633736  | 1    | Decal –Z255              |
| 44       | 3256–23  | 6    | Washer–Flat              |

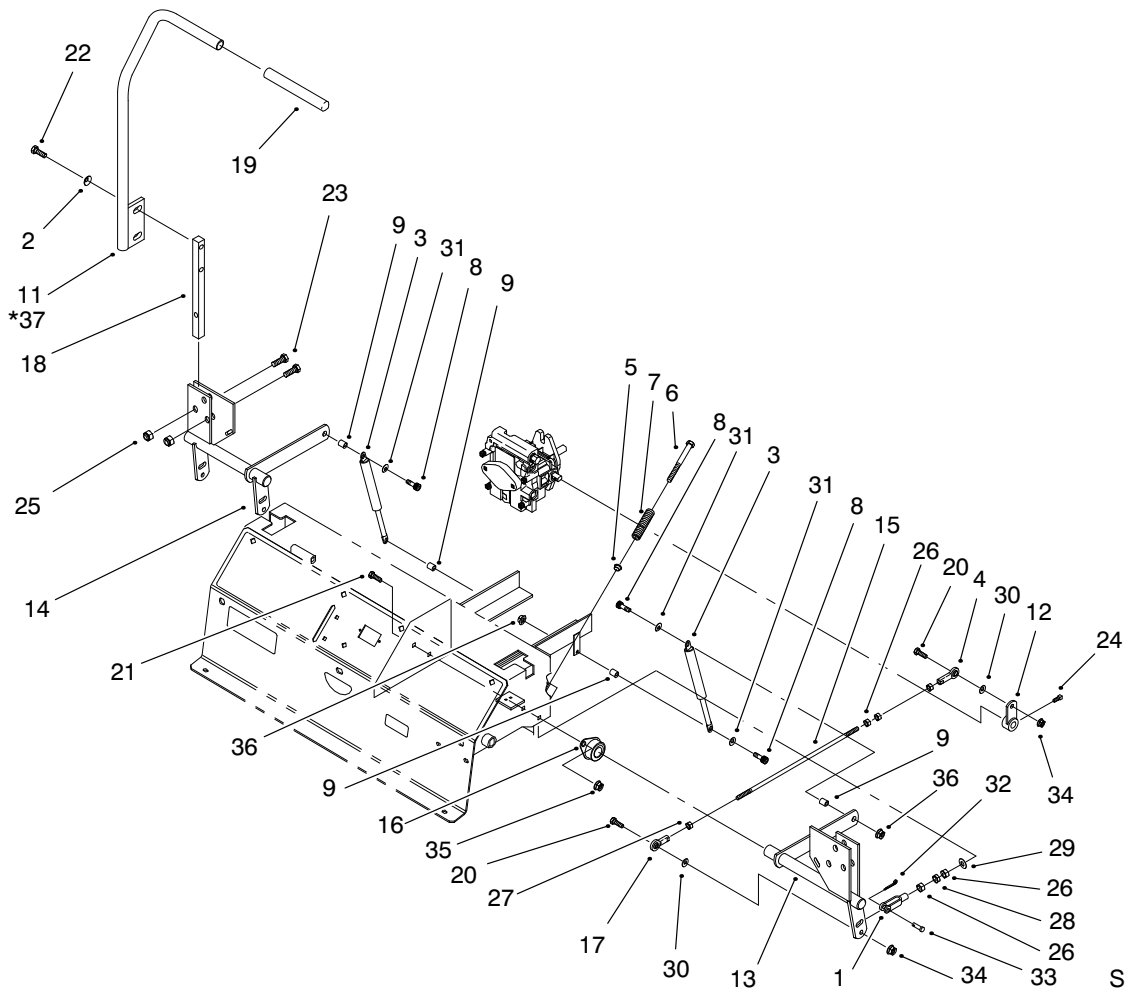


Sheet No.:5

## Brake And Wheel Hub Assembly

| Ref. No. | Part No. | Qty. | Description         | Ref. No. | Part No. | Qty. | Description       |
|----------|----------|------|---------------------|----------|----------|------|-------------------|
| 1        | E513140  | 2    | Bearing, Control    | 29       | E808283  | 2    | Pin-Clevis        |
| 2        | E633454  | 2    | Spring-Brake        | 30       | E808514  | 2    | Ring-Retaining    |
| 3        | E633477  | 3    | Rod-Brake           | 31       | 3256-28  | 2    | Washer-Flat       |
| 4        | E632489  | 1    | Lever-Brakepoint    | 32       | E523157  | 2    | Spacer            |
| 5        | E632217  | 1    | Shaft-Brake         | *33      | E632715  | 1    | Bracket-Brake, RH |
| 6        | E632714  | 1    | Bracket-Brake,LH    |          |          |      |                   |
| 9        | E633693  | 2    | Brake Band          |          |          |      |                   |
| 10       | E633380  | 4    | Spacer-Short, Wheel |          |          |      |                   |
| 11       | E633382  | 4    | Spacer-Long, Wheel  |          |          |      |                   |
| 12       | E633102  | 2    | Bearing-Side Flange |          |          |      |                   |
| 13       | E633131  | 4    | Yoke-Brake Linkage  |          |          |      |                   |
| 14       | E633144  | 2    | Pin-Trunion         |          |          |      |                   |
| 15       | E634927  | 2    | Hub And Drum ASM    |          |          |      |                   |
| 15:2     | E633926  | 4    | Stud-Wheel          |          |          |      |                   |
| 17       | E633268  | 1    | Grip-Brake Lever    |          |          |      |                   |
| 18       | 323-4    | 4    | Screw-HH            |          |          |      |                   |
| 19       | E808285  | 4    | Pin-Clevis          |          |          |      |                   |
| 20       | 325-17   | 8    | Screw-HH            |          |          |      |                   |
| 21       | E811007  | 2    | Fitting-Grease      |          |          |      |                   |
| 22       | 3217-9   | 8    | Nut-Hex             |          |          |      |                   |
| 23       | 3219-3   | 8    | Nut-Hex             |          |          |      |                   |
| 24       | 3290-357 | 4    | Nut-Lock            |          |          |      |                   |
| 25       | 3253-7   | 8    | Washer-Lock/Sp      |          |          |      |                   |
| 26       | 3256-4   | 4    | Washer-Flat         |          |          |      |                   |
| 27       | 3272-10  | 7    | Pin-Cotter          |          |          |      |                   |
| 28       | E806800  | 2    | Pin-Cotter          |          |          |      |                   |

\* Not illustrated



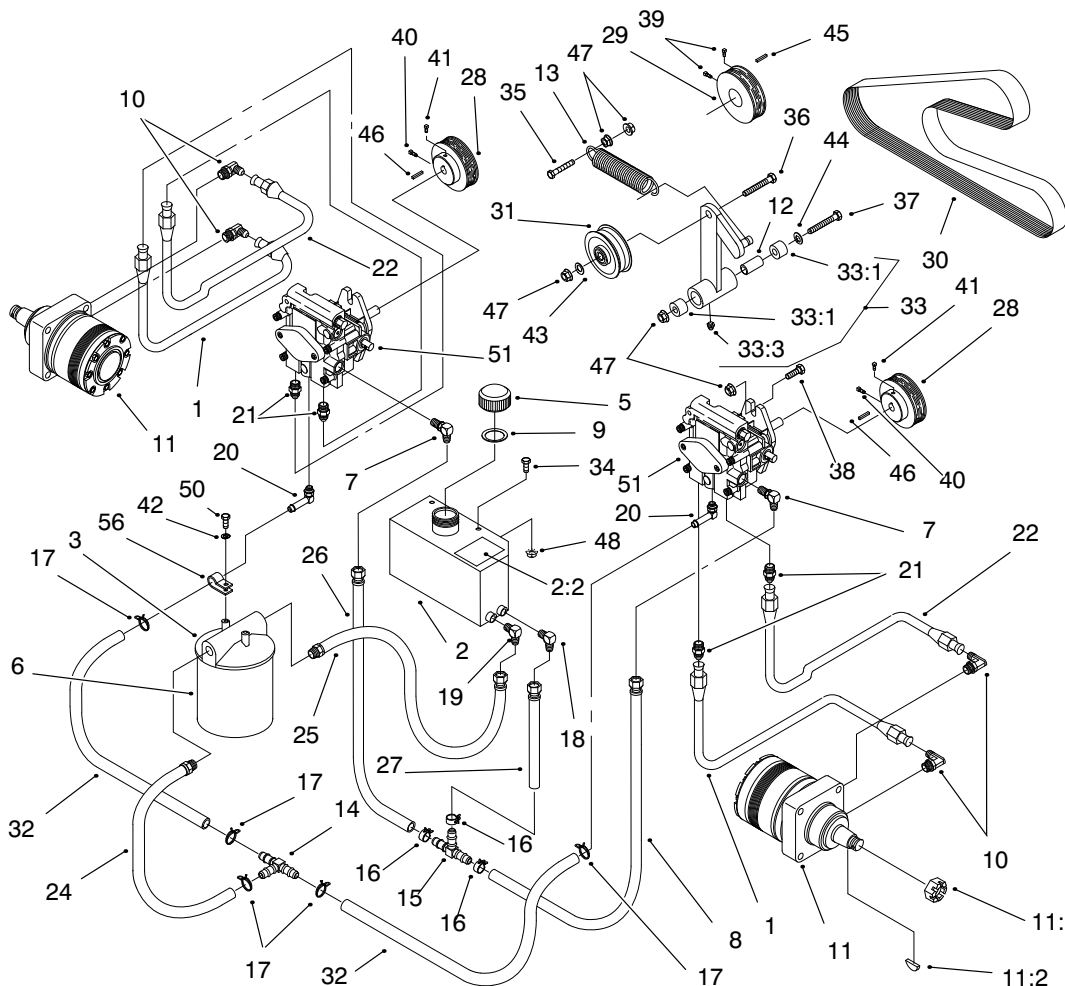
Sheet No.:6

## Control Panel Assembly

| Ref. No. | Part No. | Qty. | Description              |
|----------|----------|------|--------------------------|
| 1        | E303105  | 2    | Yoke-Adjustable          |
| 2        | 98-5975  | 4    | Washer                   |
| 3        | E523027  | 2    | Damper-Control           |
| 4        | E543017  | 2    | Ball Joint               |
| 5        | E603735  | 2    | Bushing-Nylon<br>Flanged |
| 6        | E603737  | 2    | Bolt-Neutral Return      |
| 7        | E603807  | 2    | Spring-Neutral Return    |
| 8        | E809057  | 4    | Bolt-Shoulder            |
| 9        | E603903  | 4    | Spacer                   |
| 11       | E632193  | 1    | Lever-RH                 |
| 12       | E632208  | 2    | Arm-Pump Control         |
| 13       | E632911  | 1    | Motion Control           |
| 14       | E632912  | 1    | Motion Control           |
| 15       | E633153  | 2    | Linkage                  |
| 16       | E633102  | 4    | Bearing-Side Flange      |
| 17       | E633152  | 2    | Ball Joint-LH Thread     |
| 18       | E633177  | 2    | Arm                      |
| 19       | E633257  | 2    | Grip-Motion Control      |
| 20       | 322-6    | 4    | Screw-HH                 |
| 21       | 323-4    | 8    | Screw-HH                 |
| 22       | 323-6    | 4    | Screw-HH                 |
| 23       | 323-9    | 6    | Screw-HH                 |
| 24       | E803022  | 2    | Screw                    |
| 25       | 32146-2  | 6    | Nut-Lock Ni              |
| 26       | 3219-2   | 10   | Nut-Hex                  |

| Ref. No. | Part No. | Qty. | Description    |
|----------|----------|------|----------------|
| 27       | 3220-20  | 2    | Nut-Jam LH     |
| 28       | 3220-2   | 2    | Nut-Jam        |
| 29       | 3256-2   | 2    | Washer-Flat    |
| 30       | 3256-3   | 4    | Washer-Flat    |
| 31       | 3256-23  | 4    | Washer-Flat    |
| 32       | 3272-5   | 2    | Pin-Cotter     |
| 33       | E808280  | 2    | Pin-Clevis     |
| 34       | 32128-20 | 4    | Nut-Hex Flange |
| 35       | 3290-357 | 8    | Nut-Lock       |
| 36       | 32128-33 | 4    | Nut-Hex Flange |
| *37      | E632191  | 1    | Lever-LH       |

\* Not illustrated



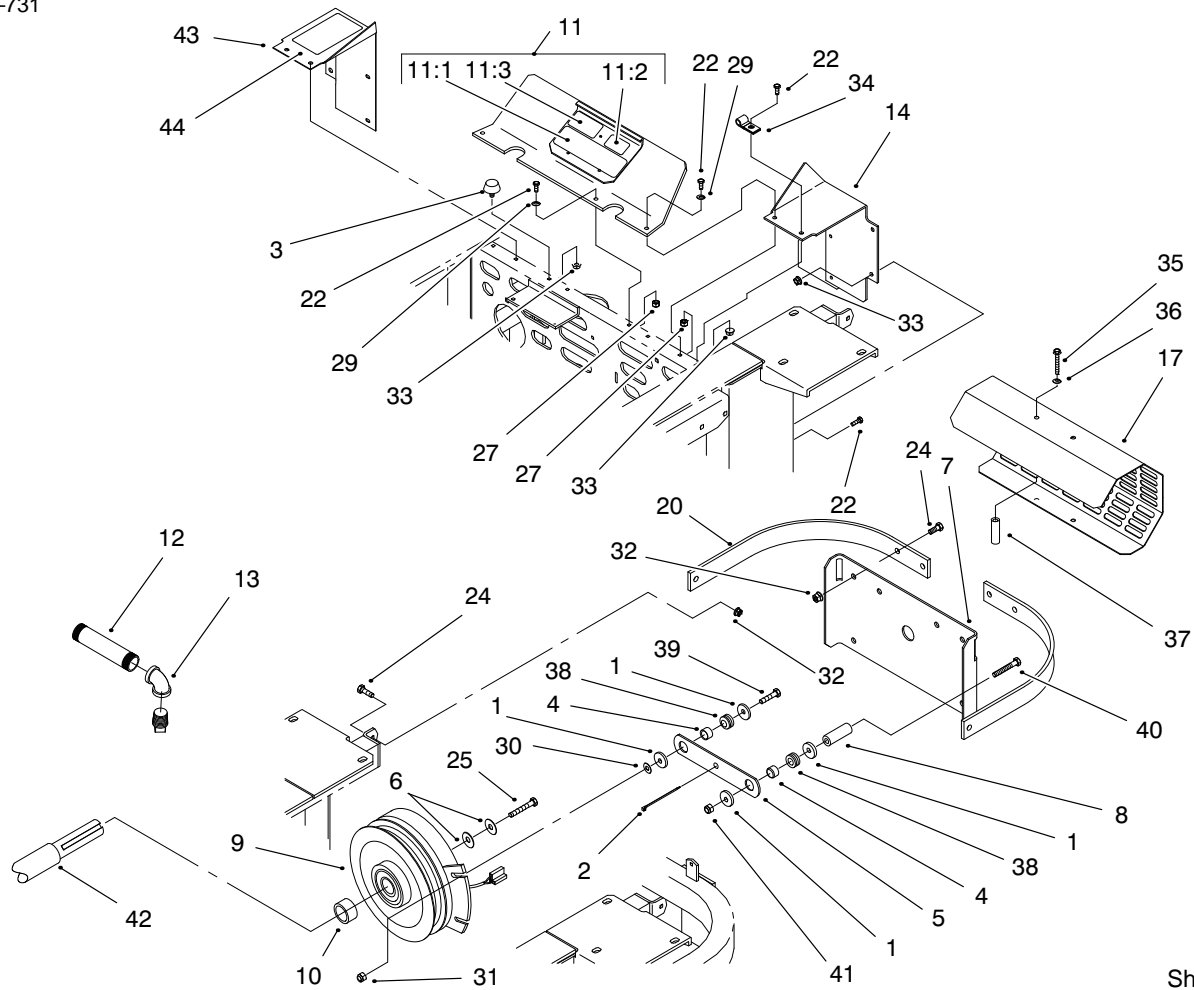
## Hydraulic System Assembly

| Ref. No. | Part No. | Qty. | Description                         |
|----------|----------|------|-------------------------------------|
| 1        | E633774  | 2    | Hose-High Pressure                  |
| 2        | 99-4625  | 1    | Hydraulic Tank ASM                  |
| 2:2      | E523552  | 1    | Decal - Hydraulic Tank, Hot Surface |
| 3        | E513006  | 1    | Filter-Head                         |
| 5        | E513167  | 1    | Cap-Hydraulic Reservoir             |
| 6        | E633750  | 1    | Filter-Hydro                        |
| 6        | E633752  | 1    | Filter-Winter Hydro                 |
| 7        | E513840  | 2    | Elbow-90                            |
| 8        | E522217  | 1    | Low Pressure Hose ASM               |
| 9        | E523103  | 1    | Gasket-Tank/Cap                     |
| 10       | E633786  | 4    | Elbow 90°                           |
| 11       | E523328  | 2    | Motor-Wheel                         |
| 11:1     | E809036  | 1    | Nut-Castle                          |
| 11:2     | E807020  | 1    | Woodruff-Key                        |
| 12       | E603384  | 1    | Bushing-Idler Pivot                 |
| 13       | E603413  | 1    | Spring-Extension                    |
| 14       | E603721  | 1    | Fitting                             |
| 15       | E603722  | 1    | Fitting                             |
| 16       | E603826  | 3    | Clamp-Hose                          |
| 17       | E603827  | 5    | Clamp-Hose                          |
| 18       | E603987  | 1    | Elbow                               |
| 19       | E603988  | 1    | Elbow                               |
| 20       | E603989  | 2    | Elbow                               |

| Ref. No. | Part No. | Qty. | Description               |
|----------|----------|------|---------------------------|
| 21       | E603990  | 4    | Adapter                   |
| 22       | E633775  | 2    | Hose-High Pressure        |
| 24       | E632281  | 1    | 12" Low Pressure Hose ASM |
| 25       | E632282  | 1    | 13" Low Pressure Hose ASM |
| 26       | E632285  | 1    | Hose-Low Pressure         |
| 27       | E632286  | 1    | Hose-Low Pressure         |
| 28       | E633568  | 2    | Sheave                    |
| 29       | E633567  | 1    | Sheave                    |
| 30       | E633749  | 1    | Belt                      |
| 31       | E633167  | 1    | Pulley-Idler              |
| 32       | E633335  | 2    | Hose-Low Pressure         |
| 33       | E634277  | 1    | Arm ASM                   |
| 33:1     | E513034  | 2    | Bearing-Pivot             |
| 33:3     | E811008  | 1    | Fitting-Grease            |
| 34       | 321-4    | 2    | Screw-HH                  |
| 35       | 323-8    | 1    | Screw-HH                  |
| 36       | 323-9    | 1    | Screw-HH                  |
| 37       | E800805  | 1    | Screw-HH                  |
| 38       | 323-7    | 4    | Screw-HH                  |
| 39       | E803022  | 2    | Screw                     |
| 40       | 3242-6   | 2    | Screw-Sq Hd Set           |
| 41       | 3242-4   | 2    | Screw-Sq Hd Set           |
| 42       | 3253-3   | 2    | Washer-Lock/Sp            |
| 43       | 3256-3   | 1    | Washer-Flat               |





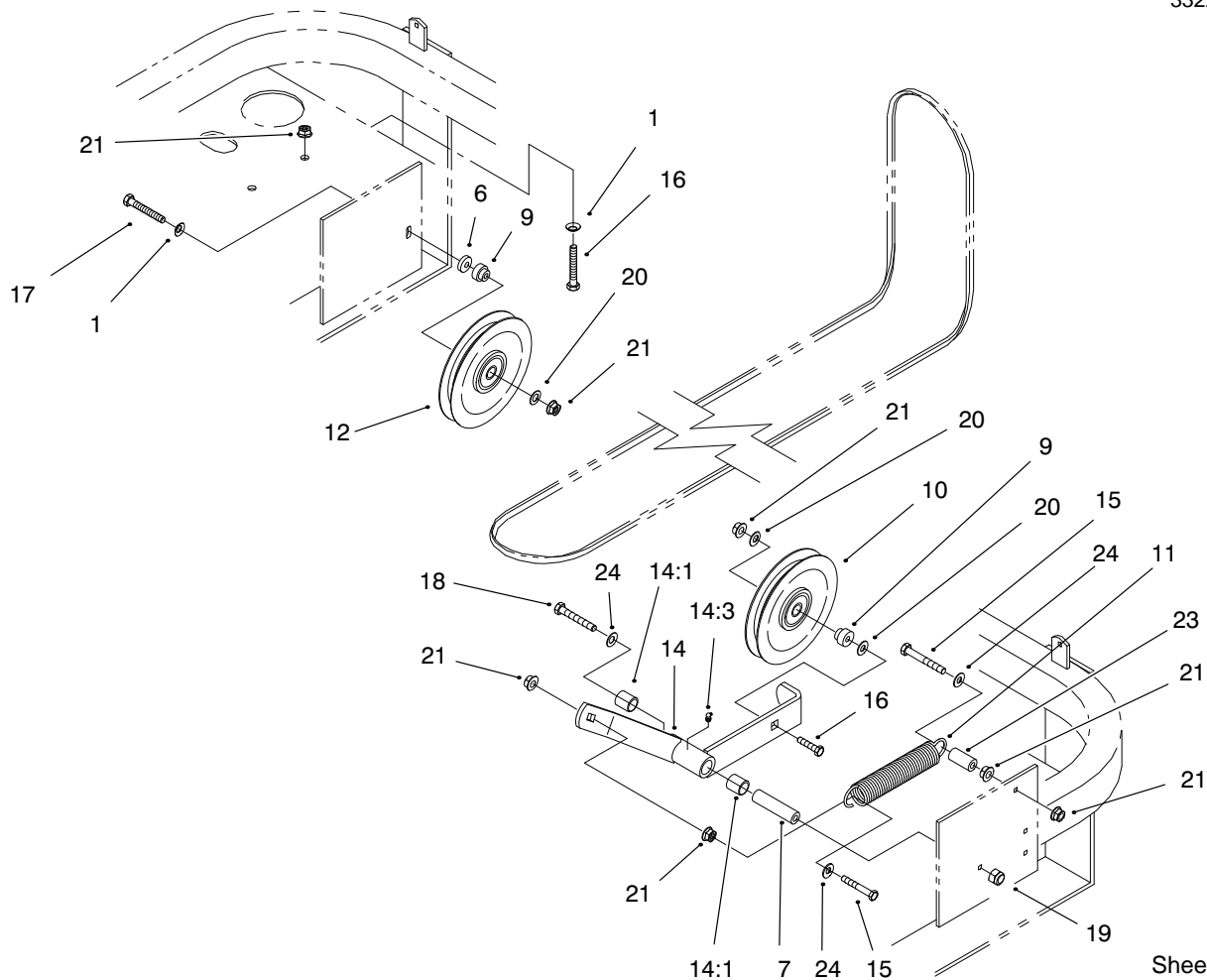


Sheet No.:9

## Shields And Clutch Assembly

| Ref. No. | Part No. | Qty. | Description           |
|----------|----------|------|-----------------------|
| 1        | E613235  | 4    | Washer                |
| 2        | E303335  | 1    | Tie-Plastic           |
| 3        | E523420  | 2    | Bumper                |
| 4        | E633545  | 2    | Spacer-Grommet        |
| 5        | E633543  | 1    | Strap-Clutch/Brake    |
| 6        | E603610  | 2    | Washer - Spring, Disc |
| 7        | E633615  | 1    | Guard, Clutch         |
| 8        | E633988  | 1    | Spacer, Clutch Anchor |
| 9        | E633099  | 1    | Clutch-Magstop        |
| 10       | E633179  | 1    | Spacer-Clutch         |
| 11       | E634862  | 1    | Shield & Decal ASM    |
| 11:1     | E643252  | 1    | Decal - Drive, Belt   |
| 11:2     | E513748  | 1    | Decal-Guard           |
| 11:3     | E633462  | 1    | Decal-Important       |
| 12       | E543232  | 1    | Nipple                |
| 13       | E303428  | 1    | Elbow                 |
| 14       | E634796  | 1    | Shield-LH             |
| 17       | E633466  | 1    | Guard-Muffler         |
| 20       | E633613  | 2    | Bracket-Guard, Top    |
| 22       | 321-4    | 10   | Screw-HH              |
| 24       | 323-6    | 6    | Screw-HH              |
| 25       | 3212-10  | 1    | Screw-HH              |
| 27       | 32146-17 | 4    | Nut-Lock              |
| 29       | 3256-2   | 4    | Washer-Flat           |
| 30       | 3256-3   | 1    | Washer-Flat           |
| 31       | 32128-20 | 1    | Nut-Hex Flange        |

| Ref. No. | Part No. | Qty. | Description         |
|----------|----------|------|---------------------|
| 32       | 3290-357 | 4    | Nut-Lock            |
| 33       | 32128-33 | 7    | Nut-Hex Flange      |
| 34       | E633396  | 1    | Clip - Loom         |
| 35       | E809076  | 2    | Screw-HH            |
| 36       | E323235  | 2    | Washer Spring, Disc |
| 37       | E323236  | 2    | Spacer              |
| 38       | E633630  | 2    | Grommet             |
| 39       | 322-6    | 1    | Screw-HH            |
| 40       | 322-19   | 1    | Screw-HH            |
| 41       | 3296-29  | 1    | Nut-Lock Ni         |
| 42       | E633830  | 1    | Kohler Command Ch25 |
| 43       | E634797  | 1    | Shield-RH           |
| 44       | E633771  | 1    | Decal - Belt, Pump  |

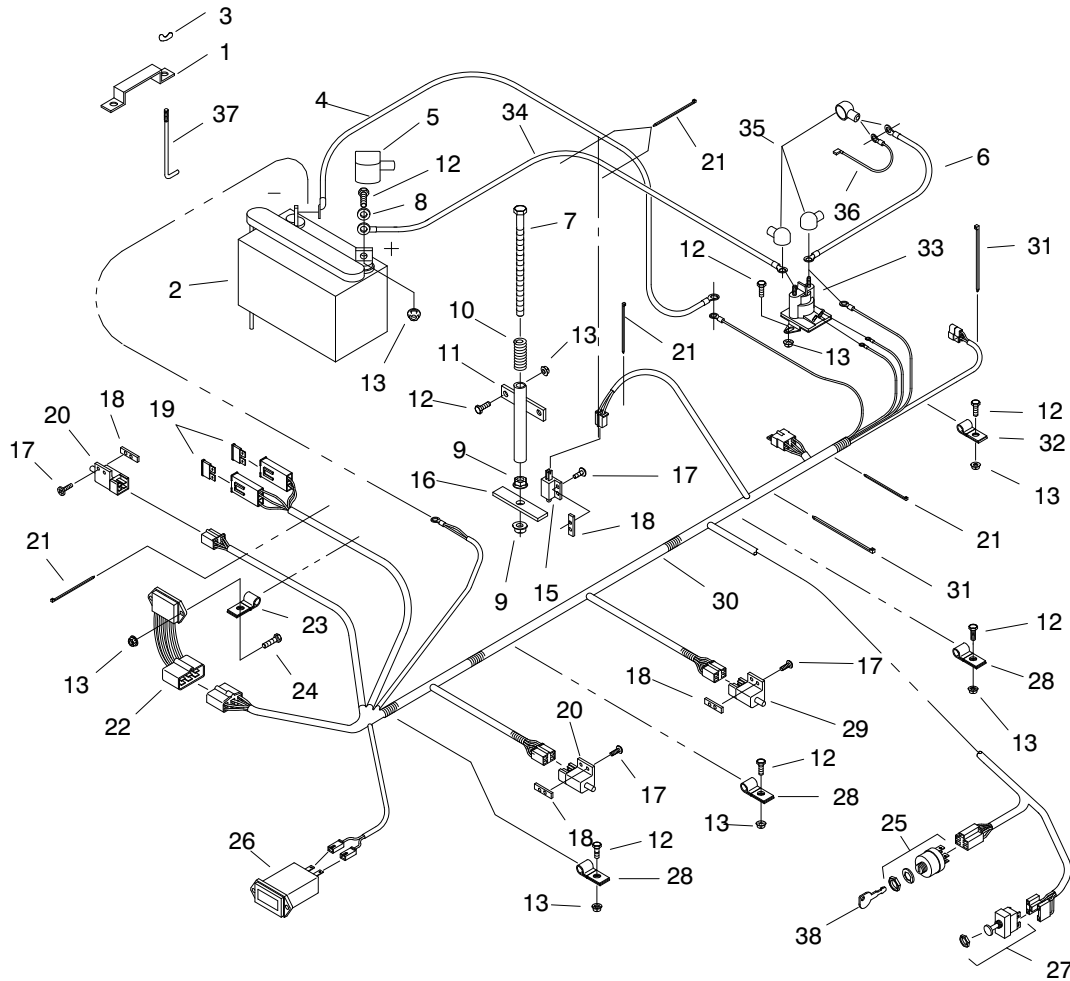


Sheet No.:10

### Idler Assembly

| Ref. No. | Part No. | Qty. | Description         |
|----------|----------|------|---------------------|
| 1        | 98-5975  | 5    | Washer              |
| 6        | E603050  | 1    | Bushing Spacer      |
| 7        | E603384  | 1    | Bushing-Idler Pivot |
| 9        | E603496  | 2    | Bushing-Idler       |
| 10       | E603805  | 1    | Idler               |
| 11       | E603402  | 1    | Spring-Extension    |
| 12       | E633166  | 1    | Idler-Pulley        |
| 14       | 99-4677  | 1    | Arm ASM             |
| 14:1     | E513034  | 2    | Bearing-Pivot       |
| 14:3     | E811008  | 1    | Fitting-Grease      |
| 15       | 323-11   | 2    | Screw-HH            |
| 16       | 323-9    | 5    | Screw-HH            |
| 17       | 323-13   | 1    | Screw-HH            |
| 18       | E800805  | 1    | Screw-HH            |
| 19       | 32146-2  | 1    | Nut-Lock Ni         |
| 20       | 3256-24  | 4    | Washer-Flat         |
| 21       | 3290-357 | 10   | Nut-Lock            |
| 23       | E603401  | 1    | Spacer-Fender       |
| 24       | 3256-4   | 3    | Washer-Flat         |

| Ref. No.  | Part No. | Qty. | Description |
|-----------|----------|------|-------------|
| PROTOTYPE |          |      |             |

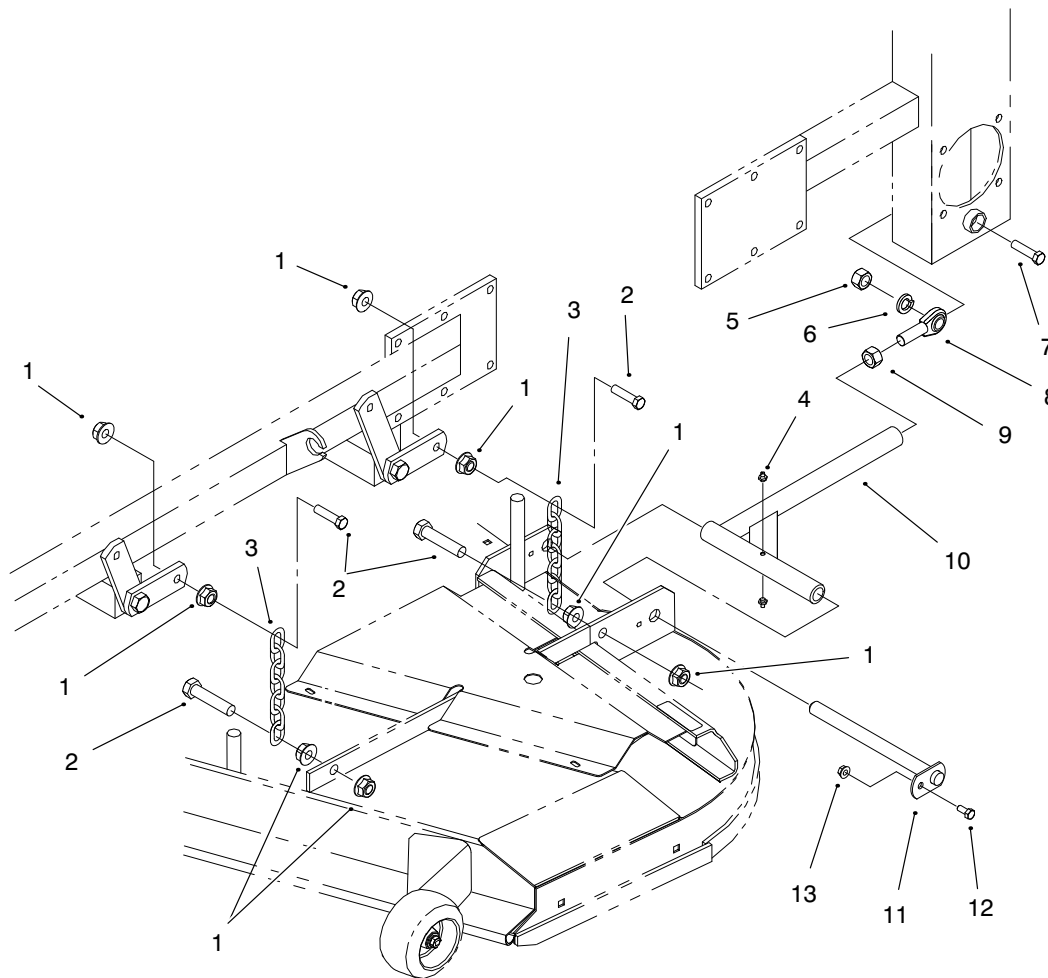


Sheet No.:11

## Electrical System Assembly

| Ref. No. | Part No. | Qty. | Description             |
|----------|----------|------|-------------------------|
| 1        | E633652  | 1    | Strap-Battery Hold Down |
| 2        | E603479  | 1    | Battery-12v             |
| 3        | E543792  | 2    | Wingnut-Nyloc           |
| 4        | E633307  | 1    | Wire-Ground             |
| 5        | E543391  | 1    | Insulator-Battery       |
| 6        | E633306  | 1    | Wire-Starter            |
| 7        | E800282  | 1    | Screw-HH                |
| 8        | 3256-2   | 2    | Washer-Flat             |
| 9        | 32128-20 | 2    | Nut-Hex Flange          |
| 10       | E523415  | 1    | Spring-Switch, Seat     |
| 11       | E522424  | 1    | Spring Mount            |
| 12       | 321-4    | 8    | Screw-HH                |
| 13       | 32128-33 | 11   | Nut-Hex Flange          |
| 15       | E513152  | 1    | Switch-Seat             |
| 16       | E513180  | 1    | Actuator - Switch, Seat |
| 17       | E803028  | 8    | Screw                   |
| 18       | E633181  | 4    | Plate-Tapped            |
| 19       | E816001  | 2    | Fuse-Blade Type 20 Amp  |
| 20       | E633111  | 2    | Switch-Drive Lever      |
| 21       | E303287  | 5    | Tie-Plastic             |
| 22       | E543316  | 1    | Module-Safety           |
| 23       | E513762  | 1    | Clip                    |
| 24       | 321-6    | 1    | Screw-HH                |

| Ref. No. | Part No. | Qty. | Description            |
|----------|----------|------|------------------------|
| 25       | E543070  | 1    | Switch-Ignition        |
| 26       | E513374  | 1    | Meter-Engine Hours     |
| 27       | E633673  | 1    | Switch-PTO             |
| 28       | E633396  | 3    | Clip - Loom            |
| 29       | E633110  | 1    | Switch-Brake           |
| 30       | E643119  | 1    | Harness-Wiring         |
| 31       | E303335  | 2    | Tie-Plastic            |
| 32       | E323229  | 1    | Clip-Loom              |
| 33       | E513075  | 1    | Switch-12v Solenoid    |
| 34       | E523281  | 1    | Cable-Battery          |
| 35       | E543393  | 3    | Insulator-Solenoid     |
| 36       | E543084  | 1    | Wire-Starter Solenoid  |
| 37       | E633651  | 2    | Bolt-Battery Hold Down |
| 38       | 63-8360  | 2    | Key-Ignition w/Shield  |

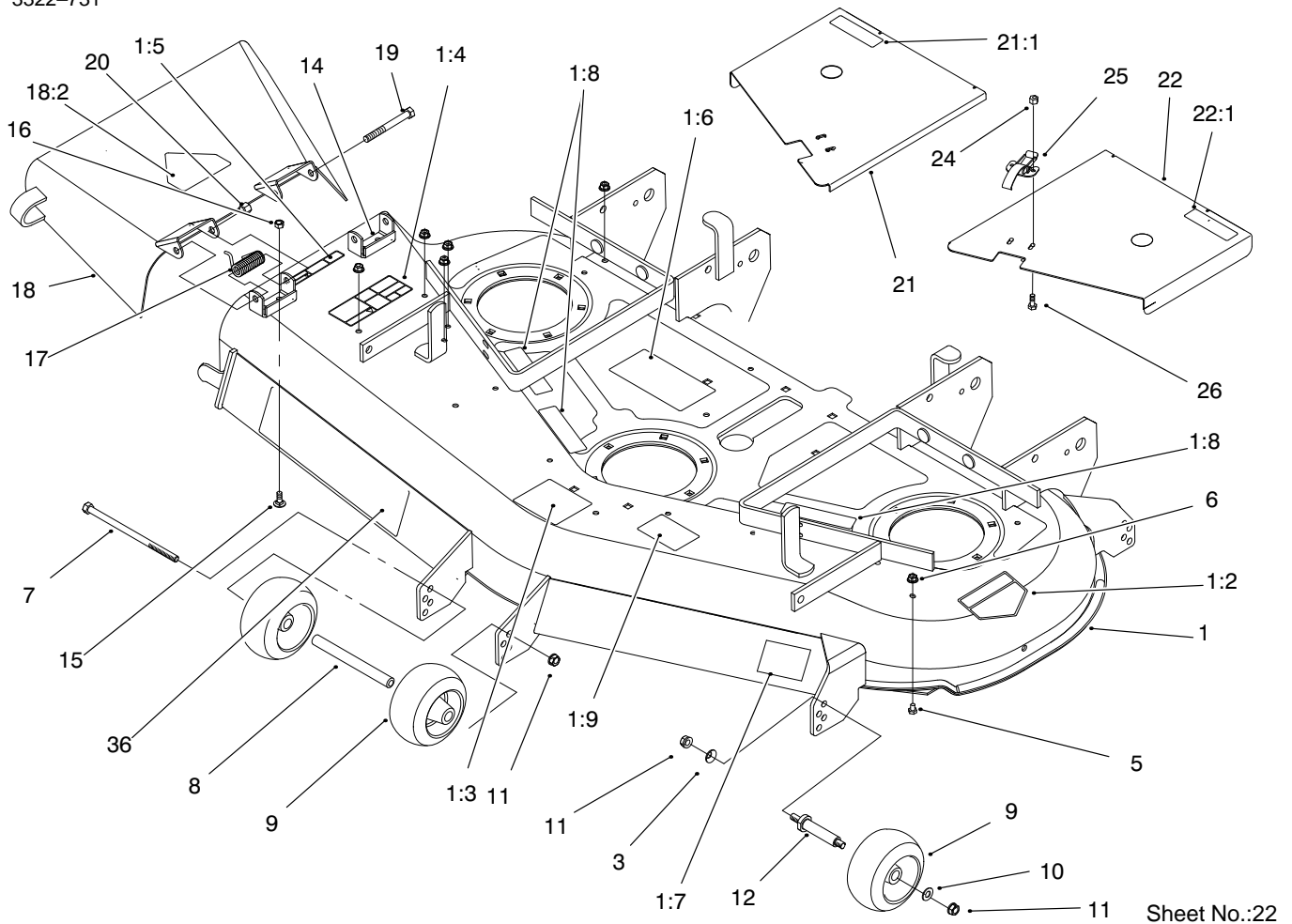


Sheet No.:12

### Frame And Deck Assembly

| Ref. No. | Part No. | Qty. | Description        |
|----------|----------|------|--------------------|
| 1        | 32128-37 | 16   | Nut-Whizlock       |
| 2        | 324-6    | 8    | Screw-HH           |
| 3        | E633447  | 4    | Chain - Deck Lift  |
| 4        | 302-19   | 4    | Fitting - Grease   |
| 5        | 3217-11  | 2    | Nut-Hex            |
| 6        | 3253-8   | 2    | Washer-Lock/Sp     |
| 7        | 327-11   | 2    | Screw-HH           |
| 8        | E633029  | 2    | End-Rod, Spherical |
| 9        | 3219-6   | 2    | Nut-Hex            |
| 10       | E632690  | 2    | Strut              |
| 11       | E632199  | 2    | Pin-Deck Strut     |
| 12       | 322-3    | 2    | Screw-HH           |
| 13       | 32128-20 | 2    | Nut-Hex Flange     |

| Ref. No.   | Part No. | Qty. | Description |
|--|----------|------|-------------|
| <p style="font-size: 48px; opacity: 0.5; transform: rotate(-10deg);">PROTOTYPE</p> |          |      |             |

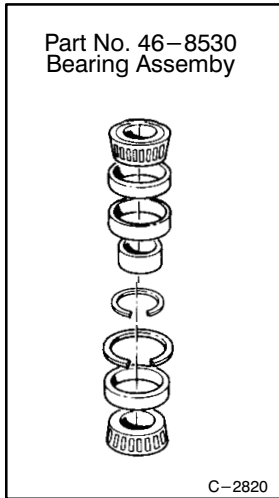
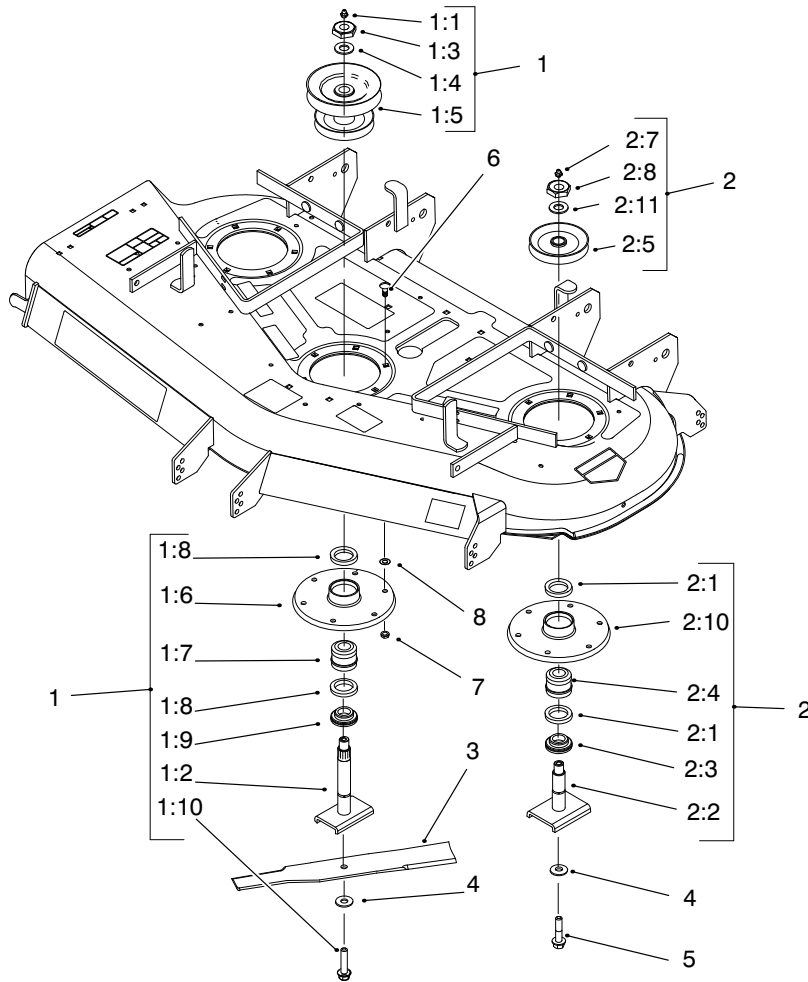


## Deck, Deflector And Roller Assembly

| Ref. No. | Part No.   | Qty. | Description         |
|----------|------------|------|---------------------|
| 1        | 100-2338   | 1    | Deck ASM            |
| 1:2      | 43-8480    | 1    | Decal-Danger        |
| 1:3      | 98-3798    | 1    | Decal-Gage Wheel    |
| 1:4      | 66-1340    | 1    | Decal-Danger        |
| 1:5      | 66-6380    | 1    | Decal-Danger        |
| 1:6      | 98-3799    | 1    | Decal-Belt Routing  |
| 1:7      | 98-3269    | 1    | Decal-Made In USA   |
| 1:8      | 98-5954    | 3    | Decal-Cover Missing |
| 1:9      | 93-7818    | 1    | Decal-Blade Bolt    |
|          |            |      | Torque              |
| 3        | 98-5975    | 3    | Washer              |
| 5        | 321-1      | 6    | Screw-HH            |
| 6        | 32128-33   | 6    | Nut-Hex Flange      |
| 7        | 323-28     | 1    | Screw-HH            |
| 8        | 98-5967    | 1    | Spacer-Wheel        |
| 9        | 68-2730    | 5    | Gage Wheel          |
| 10       | E373034    | 3    | Washer-Swivel       |
| 11       | 3290-357   | 7    | Nut-Lock            |
| 12       | 99-2842    | 3    | Spacer-Wheel        |
| 14       | 29-5590-01 | 2    | Bracket-Pivot       |
| 15       | 3230-18    | 4    | Screw-CARR          |
| 16       | 32152-1    | 4    | Nut-Lock            |
| 17       | 40-6230    | 2    | Spring              |
| 18       | 98-5984    | 1    | Deflector ASM       |
| 18:2     | 54-9220    | 1    | Decal-Danger        |
| 19       | 3211-15    | 2    | Screw-HH            |

| Ref. No. | Part No. | Qty. | Description         |
|----------|----------|------|---------------------|
| 20       | 3296-5   | 2    | Nut-Lock Ni         |
| 21       | 98-5963  | 1    | Assembly - RH Cover |
| 21:1     | 67-5360  | 1    | Decal-Danger        |
| 22       | 98-5965  | 1    | Assembly - LH Cover |
| 22:1     | 67-5360  | 1    | Decal-Danger        |
| 24       | 32128-17 | 4    | Nut-Flange Lock     |
| 25       | 249-21   | 2    | Clamp-Slotted       |
| 26       | 3290-321 | 4    | Screw-HWH           |
| 36       | 98-5953  | 1    | Decal-SFS           |

PROTOTYPE



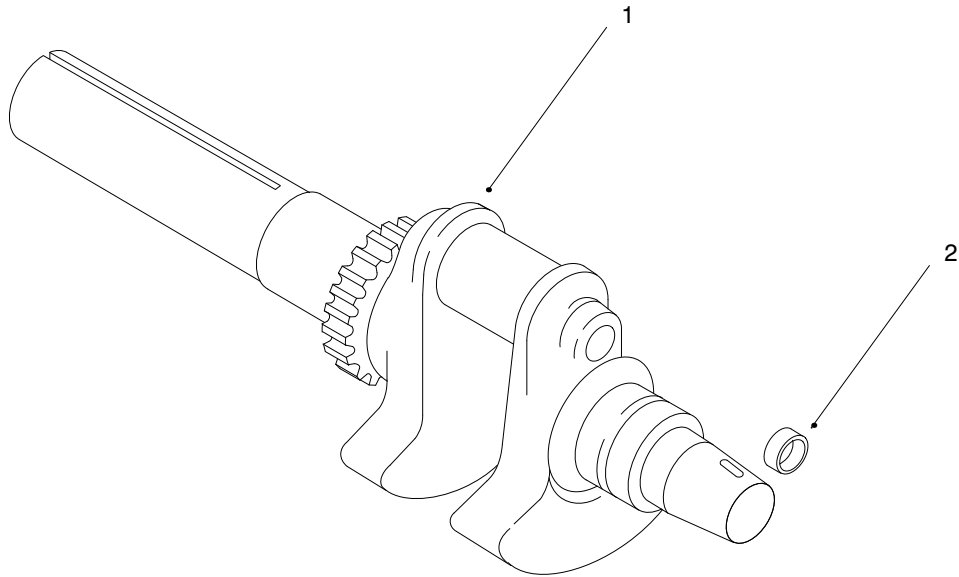
Sheet No.:23

## Spindle And Pulley Assembly

| Ref. No. | Part No. | Qty. | Description             |
|----------|----------|------|-------------------------|
| 1        | 100-2313 | 1    | Spindle Housing ASM     |
| 1:1      | 302-2    | 1    | Fitting-Grease          |
| 1:2      | 51-3551  | 1    | Shaft-Spindle           |
| 1:3      | 32146-20 | 1    | Nut-Jam                 |
| 1:4      | 92-5836  | 1    | Washer - Axle           |
| 1:5      | 100-2312 | 1    | Pulley And Hub ASM      |
| 1:6      | 61-4160  | 1    | Spindle                 |
| 1:7      | 46-8530  | 1    | Bearing ASM             |
| 1:8      | 253-139  | 2    | Seal-Oil                |
| 1:9      | 27-0950  | 1    | Spacer-Bearing, Spindle |
| 1:10     | 92-5816  | 1    | Flangebolt-Blade        |
| 2        | 99-4639  | 2    | Spindle ASM             |
| 2:1      | 253-139  | 2    | Seal-Oil                |
| 2:2      | 27-0920  | 1    | Shaft-Spindle           |
| 2:3      | 27-0950  | 1    | Spacer-Bearing, Spindle |
| 2:4      | 46-8530  | 1    | Bearing ASM             |
| 2:5      | 99-4613  | 1    | Pulley & Hub            |
| 2:7      | 302-2    | 1    | Fitting-Grease          |
| 2:8      | 32146-20 | 1    | Nut-Jam                 |
| 2:10     | 61-4160  | 1    | Spindle                 |
| 2:11     | 7-4150   | 1    | Washer-Pinion           |
| 3        | 27-0990  | 3    | Blade                   |
| 4        | E513435  | 3    | Washer-Spring           |
| 5        | 92-5816  | 2    | Flangebolt-Blade        |

| Ref. No. | Part No. | Qty. | Description     |
|----------|----------|------|-----------------|
| 6        | 3231-22  | 16   | Screw-CARR      |
| 7        | 32128-21 | 16   | Nut-Flange Lock |
| 8        | 3256-24  | 1    | Washer-Flat     |





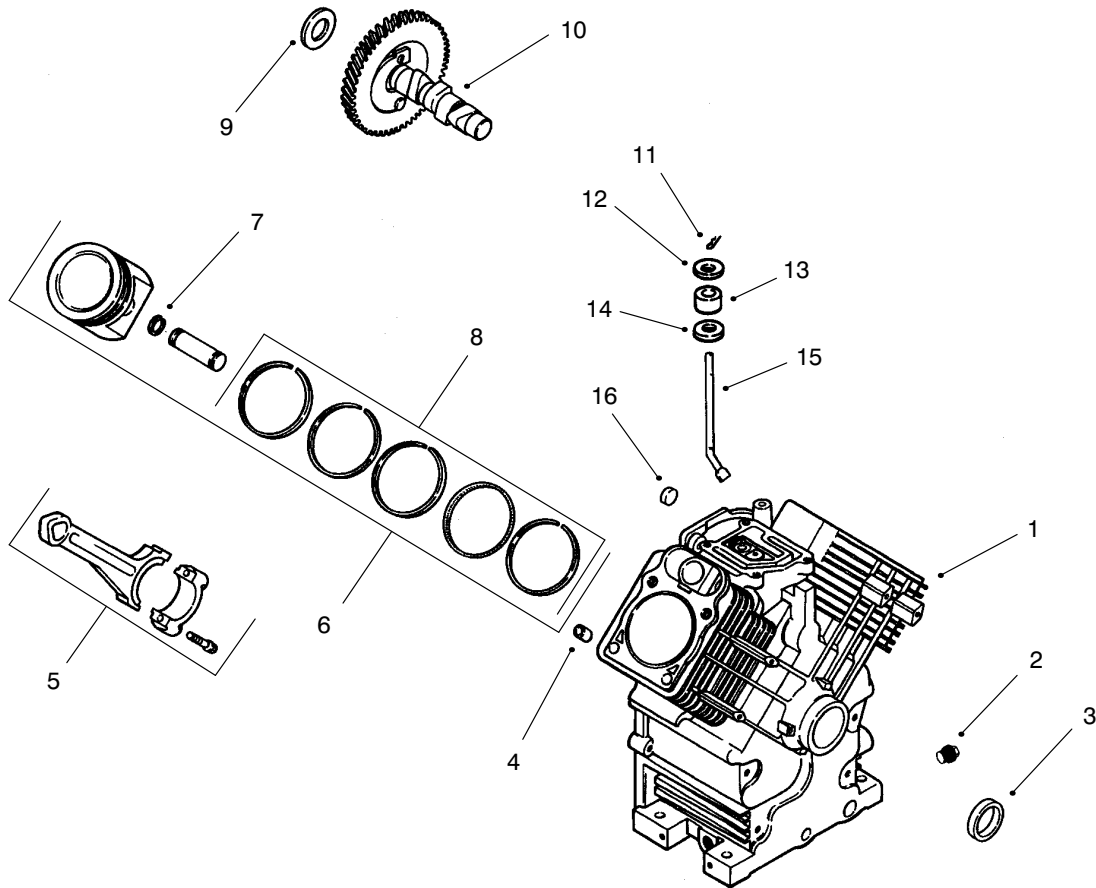
**Group 1 – Crankshaft (CH25S 68606 Kohler)**

| Ref. No. | Part No.  | Description             | No. Used |
|----------|-----------|-------------------------|----------|
| 1        | 24 014 06 | Crankshaft (Includes 2) | 1        |
| 2        | 52 139 09 | Plug, cup               | 1        |

| Ref. No. | Part No. | Description | No. Used |
|----------|----------|-------------|----------|
|          |          |             |          |

PROTOTYPE

Obtain Parts From Kohler

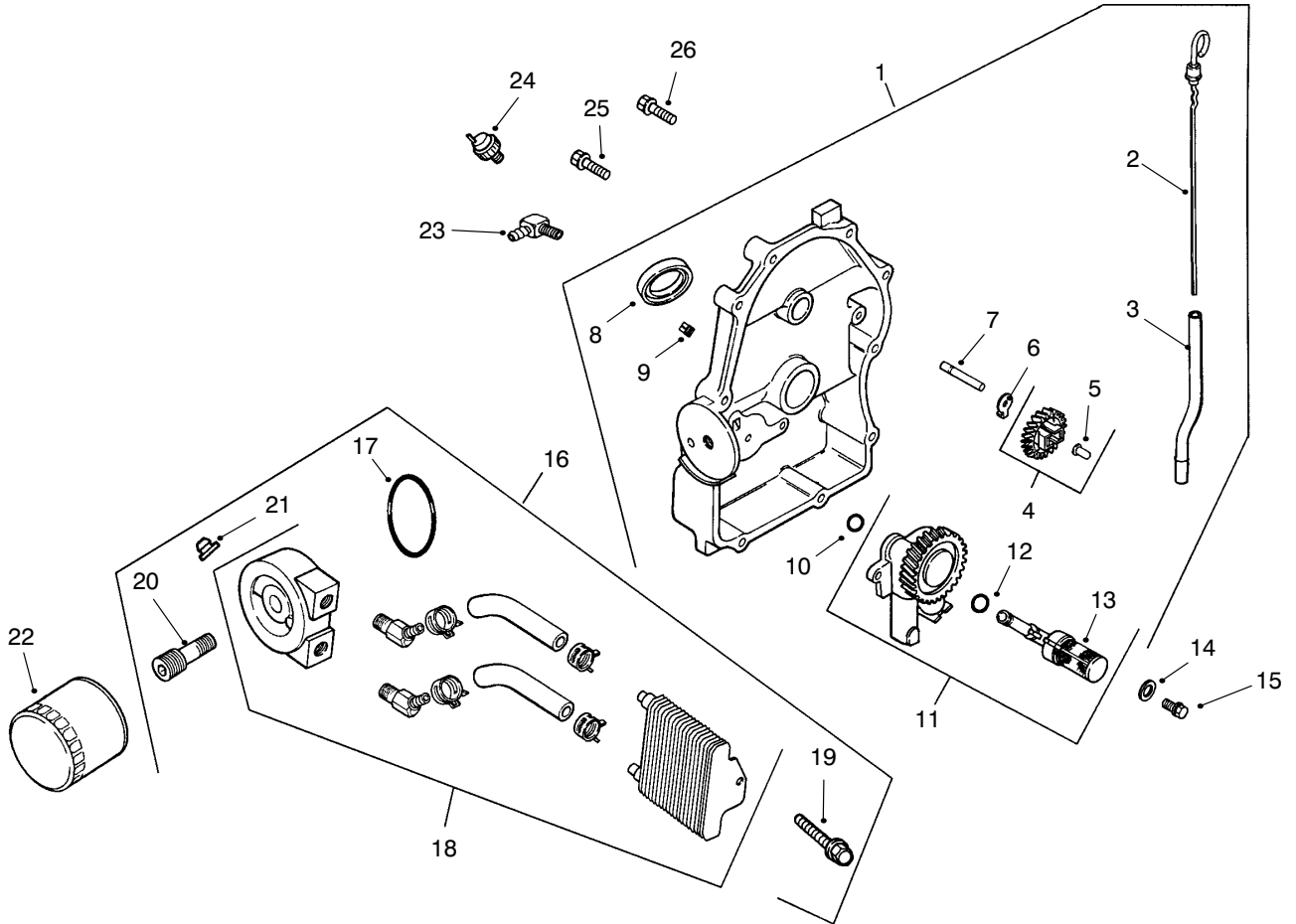


### Group 2 – Crankcase (CH25S 68606 Kohler)

| Ref. No. | Part No.  | Description                            | No. Used |
|----------|-----------|--|----------|
| 1        | 24 561 33 | Cylinder Block<br>(Includes 2,4,16,17) | 1        |
| 2        | X-75-10   | Plug, drain                            | 2        |
| 3        | 24 032 01 | Seal, oil front                        | 1        |
| 4        | 12 380 17 | Pin, dowel locating                    | 6        |
| 5        | 24 067 13 | Connecting Rod (Std.)                  | 2        |
|          | 24 067 14 | Connecting Rod (.25)                   | 2        |
| 6        | 24 874 06 | Piston w/Ring Set (Std.)               | 2        |
| 7        | 24 018 01 | Retainer, piston pin                   | 4        |
| 8        | 24 108 04 | Ring Set (Std.)                        | 2        |
| 9        | 12 422 09 | Shim, camshaft – red                   | A/R      |
|          | 12 422 13 | Shim, camshaft – black                 | A/R      |
|          | 12 422 07 | Shim, camshaft – white                 | A/R      |
|          | 12 422 08 | Shim, camshaft – blue                  | A/R      |

| Ref. No. | Part No.  | Description                              | No. Used |
|----------|-----------|--|----------|
|          | 12 422 10 | Shim, camshaft – yellow                  | A/R      |
|          | 12 422 11 | Shim, camshaft – green                   | A/R      |
|          | 12 422 12 | Shim, camshaft – gray                    | A/R      |
| 10       | 24 012 10 | Camshaft                                 | 1        |
| 11       | 12 380 04 | Pin, hitch                               | 1        |
| 12       | M-0631005 | Washer, flat                             | 1        |
| 13       | 12 032 01 | Seal, governor cross shaft               | 1        |
| 14       | X-25-102  | Washer, plain                            | 1        |
| 15       | 24 144 01 | Shaft, governor cross                    | 1        |
| 16       | 52 139 09 | Plug, cup                                | 1        |
| 17       | 24 113 56 | <b>Not Illustrated</b><br>Decal, Service | 1        |

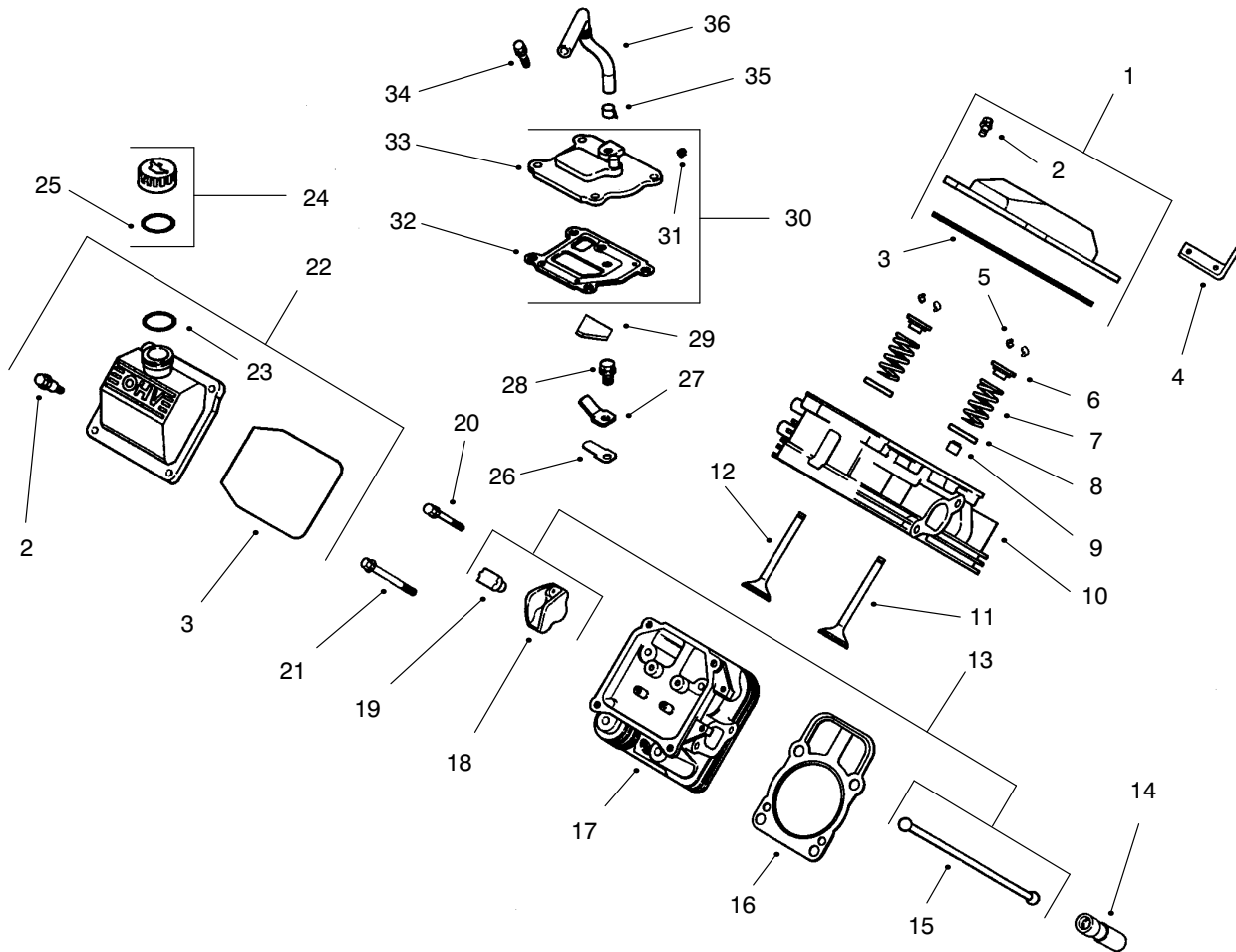
Obtain Parts From Kohler



### Group 3 – Oil Pan/Lubrication (CH25S 68606 Kohler)

| Ref. No. | Part No.  | Description                                | No. Used | Ref. No. | Part No.  | Description                   | No. Used |
|----------|-----------|--|----------|----------|-----------|-------------------------------|----------|
| 1        | 24 009 83 | Plate, closure assembly<br>(Includes 2–12) | 1        | 15       | M-0645025 | Screw, hex flange             | 2        |
| 2        | 24 038 06 | Dipstick                                   | 1        | 16       | 54 755 14 | Kit, oil cooler (Incl. 17–21) | 1        |
| 3        | 24 123 08 | Tube, dipstick                             | 1        | 17       | 24 253 17 | O-Ring                        | 1        |
| 4        | 24 043 12 | Kit, governor gear<br>(Includes 5)         | 1        | 18       | 24 594 15 | Cooler, oil                   | 1        |
| 5        | 12 380 01 | Pin, governor regulating                   | 1        | 19       | 24 086 12 | Screw, hex                    | 2        |
| 6        | 52 448 02 | Tab, locking                               | 1        | 20       | 24 136 05 | Nipple, oil filter            | 1        |
| 7        | 12 144 02 | Shaft, governor gear                       | 1        | 21       | 24 100 01 | Nut, plastic                  | 2        |
| 8        | 52 032 08 | Seal, oil (PTO end)                        | 1        | 22       | 52 050 02 | Filter, oil                   | 1        |
| 9        | X-75-23   | Plug, pipe 1/8"                            | 2        | 23       | 25 155 02 | Connector                     | 1        |
| 10       | 24 153 08 | O-Ring                                     | 1        | 24       | 24 099 03 | Switch, pressure              | 1        |
| 11       | 24 393 10 | Oil pump assembly<br>(Includes 12,13)      | 1        | 25       | 24 086 16 | Screw, hex flange             | 9        |
| 12       | 24 153 01 | O-Ring, oil pick-up                        | 1        | 26       | 24 086 17 | Screw, hex flange             | 1        |
| 13       | 24 381 04 | Pick-up, oil                               | 1        |          |           | <b>Not Illustrated</b>        |          |
| 14       | M-0631005 | Washer, plain 6 mm                         | 2        | 27       | 24 113 25 | Decal, oil cooler             | 1        |

Obtain Parts From Kohler

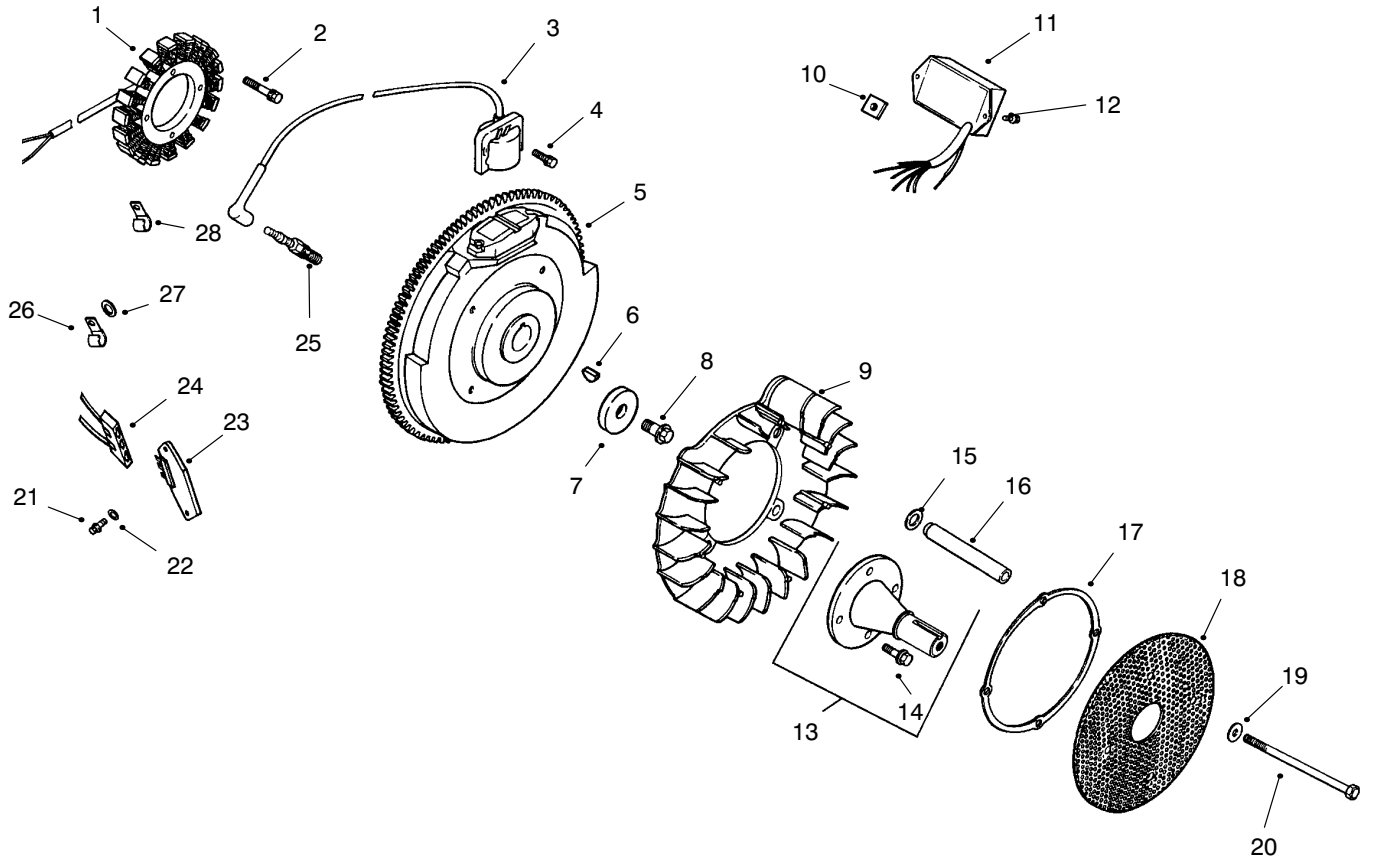


### Group 4 – Head/Valve/Breather (CH25S 68606 Kohler)

| Ref. No. | Part No.  | Description                                | No. Used |
|----------|-----------|--|----------|
| 1        | 24 755 74 | Kit, valve cover – plain<br>(Includes 2–3) | 1        |
| 2        | 24 086 32 | Screw, shoulder                            | 4        |
| 3        | 24 153 16 | O–Ring, valve cover                        | 1        |
| 4        | 24 445 01 | Strap, lifting                             | 1        |
| 5        | 12 755 03 | Kit, retainer                              | 4        |
| 6        | 12 173 01 | Cap, valve spring                          | 4        |
| 7        | 24 089 02 | Spring, valve                              | 4        |
| 8        | 235011    | Retainer, spring                           | 4        |
| 9        | 24 032 05 | Seal, valve stem                           | 2        |
| 10       | 24 318 13 | Head assembly, #1 cylinder                 | 1        |
| 11       | 24 017 01 | Valve, intake ( Std.)                      | 2        |
|          | 24 017 02 | Valve, intake (.25)                        | 2        |
| 12       | 24 016 01 | Valve, exhaust (Std.)                      | 2        |
|          | 24 016 02 | Valve, exhaust (.25)                       | 2        |
| 13       | 24 755 66 | Kit, valve train<br>(Includes 15,18,19)    | 1        |
| 14       | 12 351 02 | Lifter, valve                              | 4        |
| 15       | 24 411 05 | Rod, push                                  | 4        |
| 16       | 24 041 37 | Gasket, cylinder head                      | 2        |
| 17       | 24 318 14 | Head assembly,<br>#2 cylinder              | 1        |

| Ref. No. | Part No.  | Description                                      | No. Used |
|----------|-----------|--|----------|
| 18       | 25 186 01 | Arm, rocker                                      | 4        |
| 19       | 24 599 01 | Pivot, rocker arm                                | 4        |
| 20       | M–0640034 | Screw, hex. flange                               | 4        |
| 21       | 24 086 44 | Screw, hex. flange                               | 8        |
| 22       | 24 755 75 | Kit, valve cover – oil fill<br>(Includes 2,3,23) | 1        |
| 23       | 24 153 09 | O–Ring   | 1        |
| 24       | 24 755 46 | Kit, oil fill cap<br>(Includes 25)               | 1        |
| 25       | 12 153 03 | O–Ring, oil fill cap                             | 1        |
| 26       | 24 402 03 | Reed, breather                                   | 1        |
| 27       | 12 018 01 | Retainer, breather reed                          | 1        |
| 28       | M–0545010 | Screw, hex. flange                               | 1        |
| 29       | 24 050 01 | Filter, breather                                 | 1        |
| 30       | 24 033 01 | Kit, breather<br>(Includes 31–33)                | 1        |
| 31       | X–75–23   | Plug, allen head pipe                            | 1        |
| 32       | 24 041 23 | Gasket, breather                                 | 1        |
| 33       | 24 096 02 | Cover, breather                                  | 1        |
| 34       | M–0645020 | Screw, hex. flange                               | 4        |
| 35       | X–426–9   | Clamp, breather                                  | 1        |
| 36       | 24 326 06 | Hose, breather                                   | 1        |

Obtain Parts From Kohler

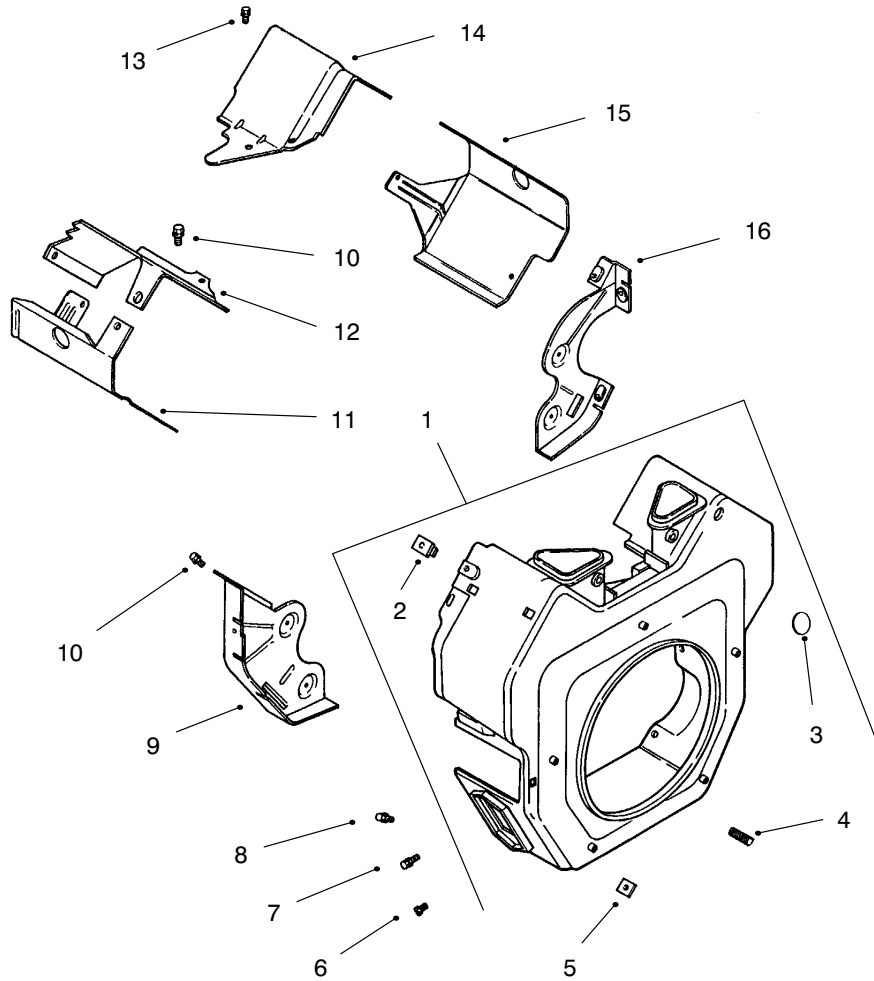


### Group 5 – Ignition/Electrical (CH25S 68606 Kohler)

| Ref. No. | Part No.  | Description                                  | No. Used |
|----------|-----------|--|----------|
| 1        | 54 755 09 | Kit, 15 amp stator (Incl. 24 126 71 bracket) | 1        |
| 2        | M-0548025 | Screw, hex. cap                              | 2        |
| 3        | 24 584 11 | Module, ignition                             | 2        |
| 4        | M-0561025 | Screw, hex. socket hd.                       | 4        |
| 5        | 24 025 03 | Flywheel                                     | 1        |
| 6        | X-42-15   | Key  | 1        |
| 7        | 12 468 03 | Washer, plain 3/8"                           | 1        |
| 8        | 12 086 14 | Screw, hex flange                            | 1        |
| 9        | 24 157 03 | Fan  | 1        |
| 10       | 24 100 02 | Nut, plastic                                 | 2        |
| 11       | 24 584 09 | Module, spark advance                        | 1        |
| 12       | 24 086 41 | Screw, phillips hd.                          | 2        |
| 13       | 24 755 08 | Kit, front drive shaft (Includes 14)         | 1        |
| 14       | M-0839025 | Screw, hex flange                            | 4        |
| 15       | 24 468 11 | Washer, spring 10mm                          | 4        |
| 16       | 24 112 14 | Spacer                                       | 4        |
| 17       | 24 141 06 | Ring, support                                | 1        |
| 18       | 24 162 22 | Screen, grass                                | 1        |

| Ref. No. | Part No.  | Description   | No. Used |
|----------|-----------|---|----------|
| 19       | X-25-53   | Washer, plain 1/4"  | 4        |
| 20       | M-0603100 | Screw, hex  | 4        |
| 21       | 24 086 18 | Screw, phillips hd.   | 2        |
| 22       | X-25-92   | Washer, plain 3/16  | 2        |
| 23       | 25 403 03 | Rectifier-regulator 15 amp  | 1        |
| 24       | 236602    | Connector   | 1        |
| 25       | 12 132 06 | Spark Plug  | 2        |
| 26       | 47 154 01 | Clip, cable   | 1        |
| 27       | X-25-63   | Washer, plain 1/4"  | 1        |
| 28       | 48 154 02 | Clip, cable   | 1        |
|          | 25 518 28 | <b>Not Illustrated</b><br>Lead, black, (4" – 18 gauge – insulated grip barrel eyelet terminals) | 1        |
|          | 24 176 38 | Harness, wiring   | 1        |
|          | 24 755 56 | Kit, wiring (Includes Terminal #25 542 17 & Tie X-468-1)  | 1        |
|          | 24 126 71 | Bracket, stator wire  | 1        |
|          | X-22-11   | Washer, lock  | 1        |

Obtain Parts From Kohler

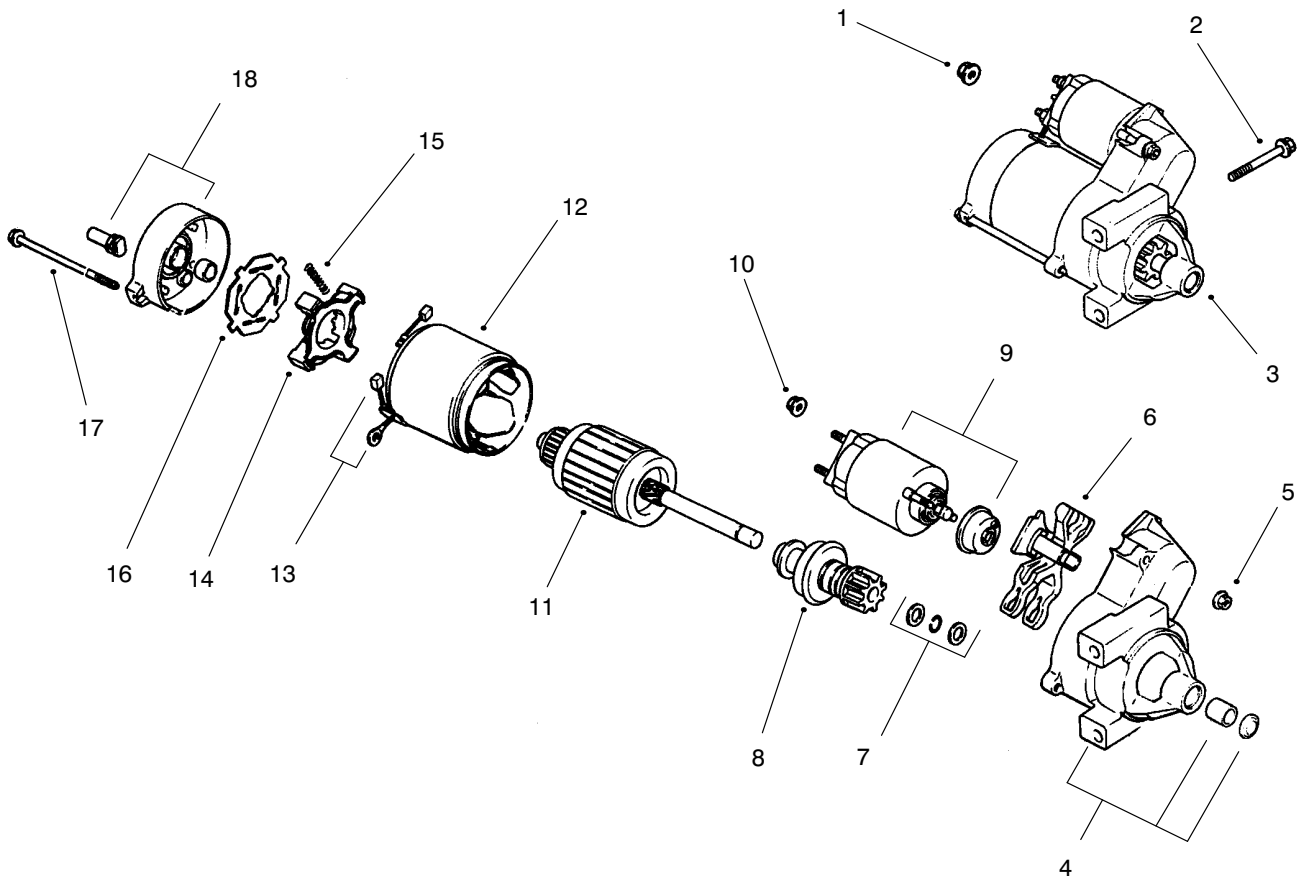


**Group 6 – Blower Housing & Baffles (CH25S 68606 Kohler)**

| Ref. No. | Part No.  | Description                       | No. Used |
|----------|-----------|-----------------------------------|----------|
| 1        | 24 027 40 | Housing, blower<br>(Includes 2-5) | 1        |
| 2        | 24 100 02 | Nut, plastic                      | 2        |
| 3        | 25 139 16 | Button plug                       | 1        |
| 4        | 25 086 43 | Screw, set                        | 1        |
| 5        | 24 100 01 | Nut, plastic                      | 2        |
| 6        | M-0551016 | Screw, hex. flange                | 1        |
| 7        | M-0545016 | Screw, hex. flange                | 5        |
| 8        | M-0567020 | Screw, hex. flange                | 2        |
| 9        | 24 146 11 | Plate, backing – #2 side          | 1        |

| Ref. No. | Part No.  | Description                         | No. Used |
|----------|-----------|-------------------------------------|----------|
| 10       | M-0645016 | Screw, hex. flange                  | 6        |
| 11       | 24 063 39 | Baffle, cyl. barrel – #2 side       | 1        |
| 12       | 24 063 17 | Baffle, valley – #2 side            | 1        |
| 13       | M-0545010 | Screw, hex. flange                  | 2        |
| 14       | 24 063 24 | Baffle, valley – #1 side            | 1        |
| 15       | 24 063 30 | Baffle, cyl. barrel – #1 side       | 1        |
| 16       | 24 146 08 | Plate, backing – #1 side            | 1        |
|          | 24 113 69 | <b>Not Illustrated</b><br>Decal, HP | 1        |

Obtain Parts From Kohler

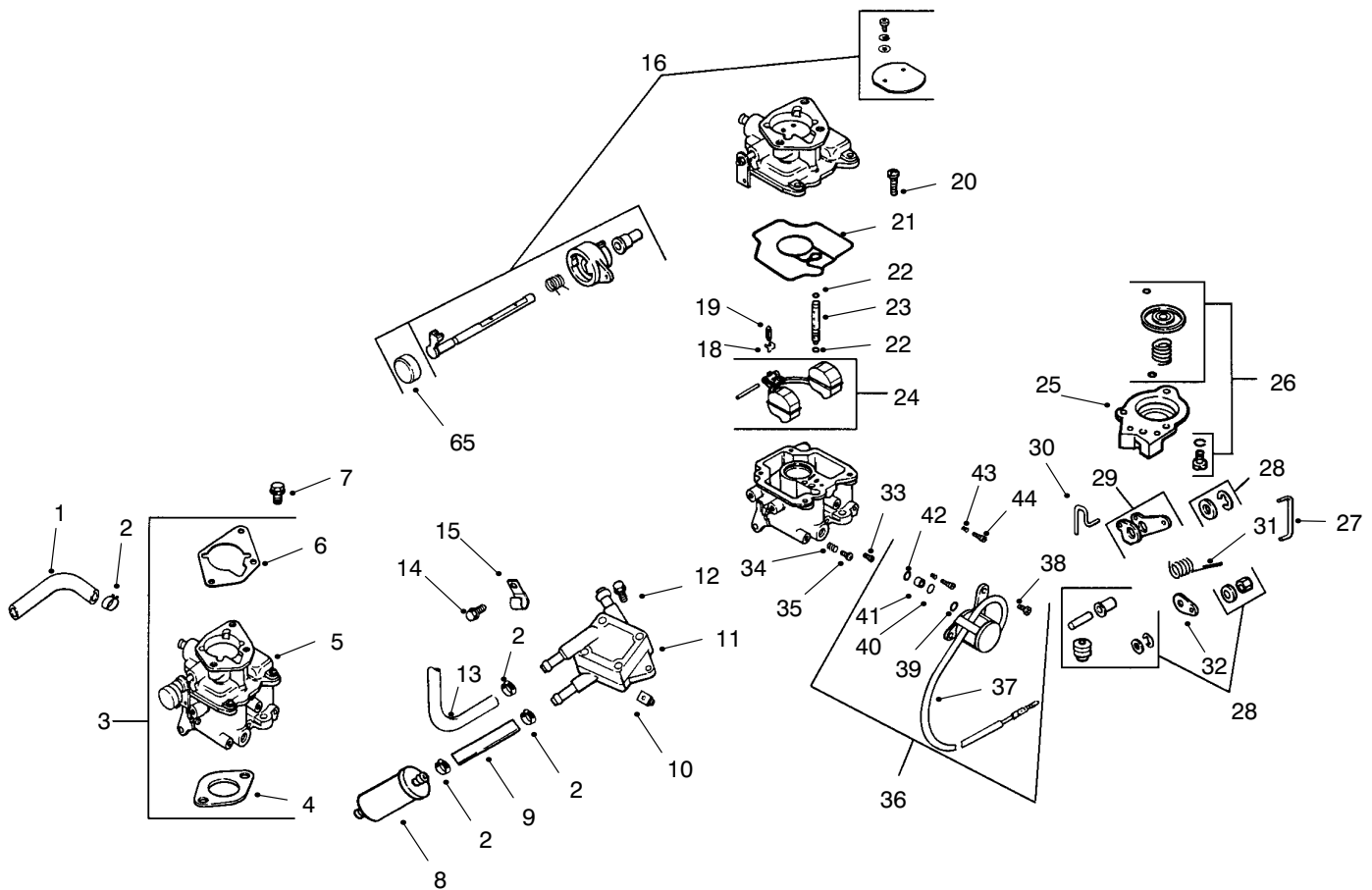


### Group 7 – Starting System (CH25S 68606 Kohler)

| Ref. No. | Part No.  | Description                                   | No. Used |
|----------|-----------|---|----------|
| 1        | M-0841080 | Nut, hex flange                               | 1        |
| 2        | M-0839080 | Screw, hex. flange                            | 2        |
| 3        | 24 098 01 | Starter, solenoid shift assembly (Incl. 4-18) | 1        |
| 4        | 24 081 04 | Drive, end cap                                | 1        |
| 5        | 52 100 10 | Nut, starter                                  | 2        |
| 6        | 12 090 10 | Lever, starter drive                          | 1        |
| 7        | 24 755 84 | Kit, starter repair                           | 1        |
| 8        | 12 239 01 | Drive, pinion                                 | 1        |
| 9        | 52 435 02 | Solenoid                                      | 1        |

| Ref. No. | Part No.  | Description                       | No. Used |
|----------|-----------|-----------------------------------|----------|
| 10       | 52 100 09 | Nut, starter                      | 1        |
| 11       | 12 170 04 | Armature, starter                 | 1        |
| 12       | 12 471 01 | Frame                             | 1        |
| 13       | 52 221 01 | Kit, brush & spring (Includes 15) | 1        |
| 14       | 52 323 03 | Holder, brush                     | 1        |
| 15       | 52 089 09 | Spring, brush                     | 4        |
| 16       | 52 168 01 | Insulator                         | 1        |
| 17       | 52 211 05 | Bolt, thru                        | 2        |
| 18       | 24 301 01 | Commutator, end cap               | 1        |

Obtain Parts From Kohler

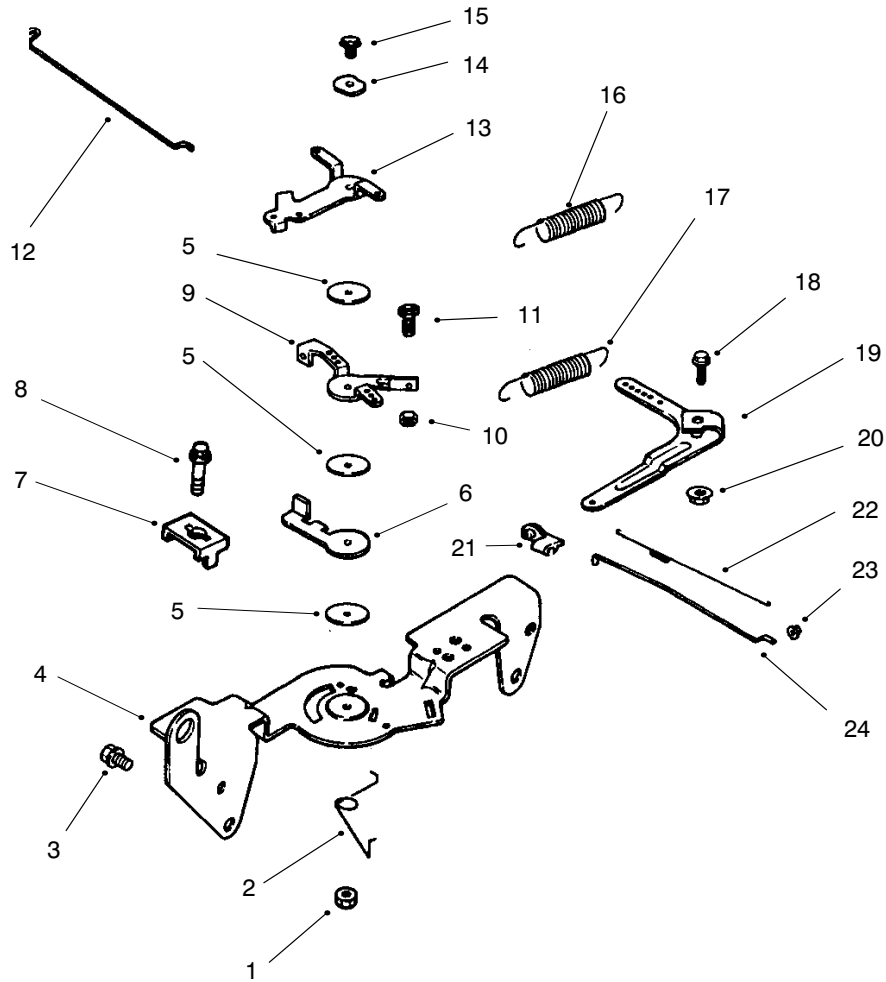


### Group 8 – Fuel System (CH25S 68606 Kohler)

| Ref. No. | Part No.  | Description  | No. Used |
|----------|-----------|--|----------|
| 1        | 25 353 10 | Line, fuel – 9"  | 2        |
| 2        | X-426-9   | Clamp, hose  | 6        |
| 3        | 24 853 34 | Kit, carburetor w/gasket<br>(Includes 4-6)                             | 1        |
| 4        | 24 041 06 | Gasket, air cleaner base   | 1        |
| 5        | 24 053 34 | Carburetor assembly<br>(For information only not available separately) | 1        |
| 6        | 24 041 17 | Gasket, carburetor   | 1        |
| 7        | M-0651030 | Screw, hex. flange   | 2        |
| 8        | 24 050 02 | Filter, fuel   | 1        |
| 9        | 25 353 15 | Line, fuel   | 1        |
| 10       | 24 100 01 | Nut, plastic   | 2        |
| 11       | 24 393 04 | Pump, fuel-pulse   | 1        |
| 12       | 24 086 12 | Screw, hex   | 2        |
| 13       | 24 353 02 | Line, fuel 15-1/2"   | 1        |
| 14       | M-0650012 | Screw, hex flange  | 1        |
| 15       | 47 154 01 | Clip, cable  | 1        |
| 18       | 24 154 01 | Clip, inlet needle valve   | 1        |
| 19       | 24 462 01 | Valve, inlet needle  | 1        |
| 20       | 24 086 09 | Screw, sems pan hd.  | 4        |
| 21       | 24 041 09 | Gasket, carburetor body  | 1        |
| 22       | 24 153 02 | O-Ring, slow jet   | 1        |
| 23       | 24 337 29 | Jet, slow  | 1        |
| 24       | 24 757 02 | Kit, float repair  | 1        |
| 25       | 24 081 05 | Housing, pump  | 1        |

| Ref. No. | Part No.  | Description                            | No. Used |
|----------|-----------|--|----------|
| 26       | 24 757 08 | Kit repair-accelerator pump            | 1        |
| 27       | 24 079 07 | Linkage, rod                           | 1        |
| 28       | 24 757 09 | Kit repair-accelerator pump diagram    | 1        |
| 29       | 24 090 16 | Lever, rod                             | 1        |
| 30       | 24 079 06 | Linkage, rod                           | 1        |
| 31       | 24 089 27 | Spring, Linkage                        | 1        |
| 32       | 24 090 15 | Lever, Linkage                         | 1        |
| 33       | 24 337 30 | Jet, main                              | 1        |
| 34       | 24 086 10 | Screw, idle speed adj.                 | 1        |
| 35       | 24 089 10 | Spring, idle speed adj.                | 1        |
| 36       | 24 757 01 | Kit, solenoid asm.<br>(Includes 37-42) | 1        |
| 37       | 24 153 06 | O-Ring, solenoid                       | 1        |
| 38       | 24 521 01 | Seat, solenoid                         | 1        |
| 39       | 24 153 05 | O-Ring, solenoid                       | 1        |
| 40       | 24 153 04 | O-Ring, solenoid                       | 1        |
| 41       | 24 435 01 | Solenoid                               | 1        |
| 42       | 24 086 07 | Screw, sems pan hd.                    | 2        |
| 43       | 24 089 11 | Spring, idle adj.                      | 1        |
| 44       | 24 368 01 | Needle, idle adj.6                     | 1        |
|          |           | <b>Not Illustrated</b>                 |          |
|          | 24 757 03 | Kit, carburetor repair                 | 1        |
|          | 24 757 07 | Kit, choke repair<br>(Includes 17)     | 1        |
|          | 24 173 02 | Cap, choke lever                       | 1        |

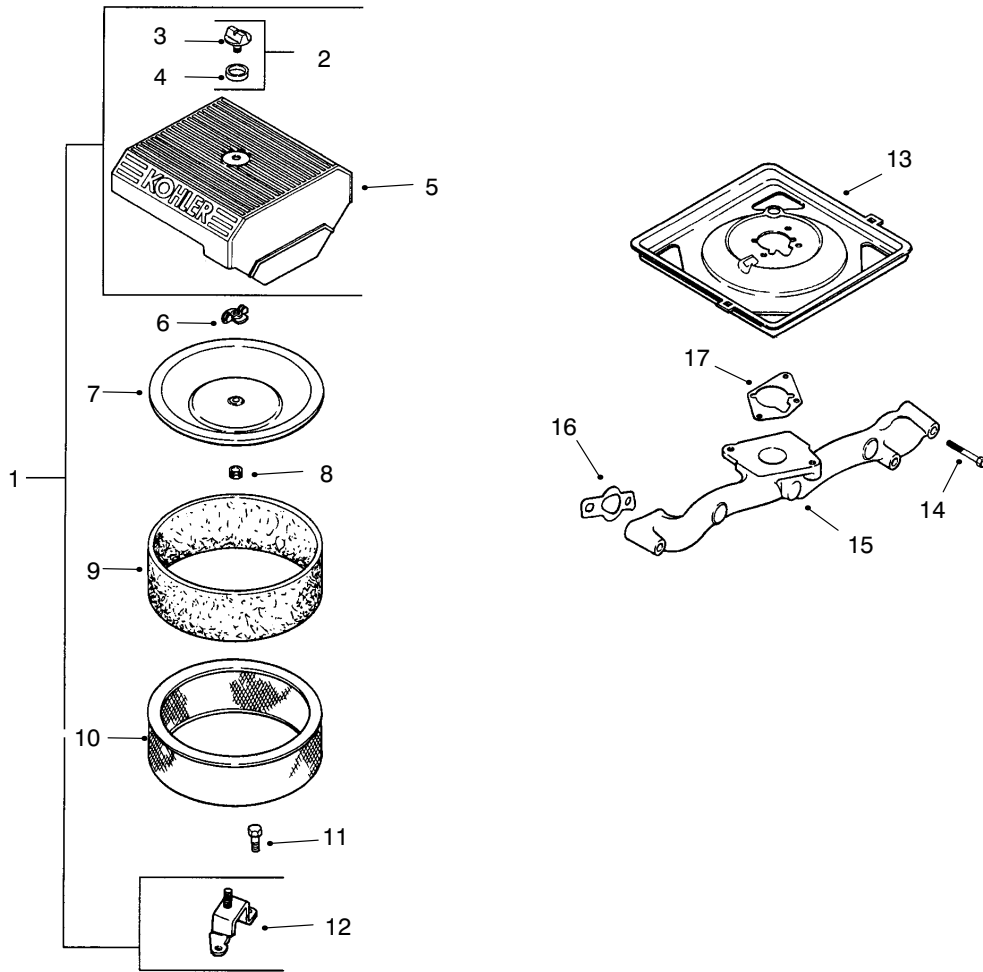
Obtain Parts From Kohler



### Group 9 – Engine Controls (CH25S 68606 Kohler)

| Ref. No. | Part No.  | Description              | No. Used | Ref. No. | Part No.   | Description                | No. Used |
|----------|-----------|--------------------------|----------|----------|------------|----------------------------|----------|
| 1        | M-0547050 | Nut, hex. lock           | 1        | 13       | 24 090 05  | Lever, choke               | 1        |
| 2        | 24 089 03 | Spring, choke return     | 1        | 14       | 41 468 03  | Washer, spring             | 1        |
| 3        | M-0645016 | Screw, hex. flange       | 4        | 15       | M-0545020  | Screw, hex. flange         | 1        |
| 4        | 24 126 56 | Bracket, control         | 1        | 16       | 24 089 38  | Spring, throttle limiter   | 1        |
| 5        | 24 468 01 | Washer, plain            | 3        | 17       | 24 089 15  | Spring, governor           | 1        |
| 6        | 24 090 07 | Lever, throttle actuator | 1        | 18       | SM-0642025 | Screw, hex. flange         | 1        |
| 7        | 12 237 01 | Clamp, cable             | 2        | 19       | 24 090 14  | Lever, governor            | 1        |
| 8        | M-0545016 | Screw, hex. flange       | 2        | 20       | M-0641060  | Nut, hex. flange           | 1        |
| 9        | 24 090 03 | Lever, throttle control  | 1        | 21       | 25 158 11  | Bushing, linkage retaining | 1        |
| 10       | M-0446030 | Nut, hex                 | 1        | 22       | 24 089 01  | Spring, linkage            | 1        |
| 11       | M-0401030 | Screw, hex. cap          | 1        | 23       | 25 158 08  | Bushing, linkage retaining | 1        |
| 12       | 24 079 02 | Linkage, choke           | 1        | 24       | 24 079 01  | Linkage, throttle          | 1        |

Obtain Parts From Kohler

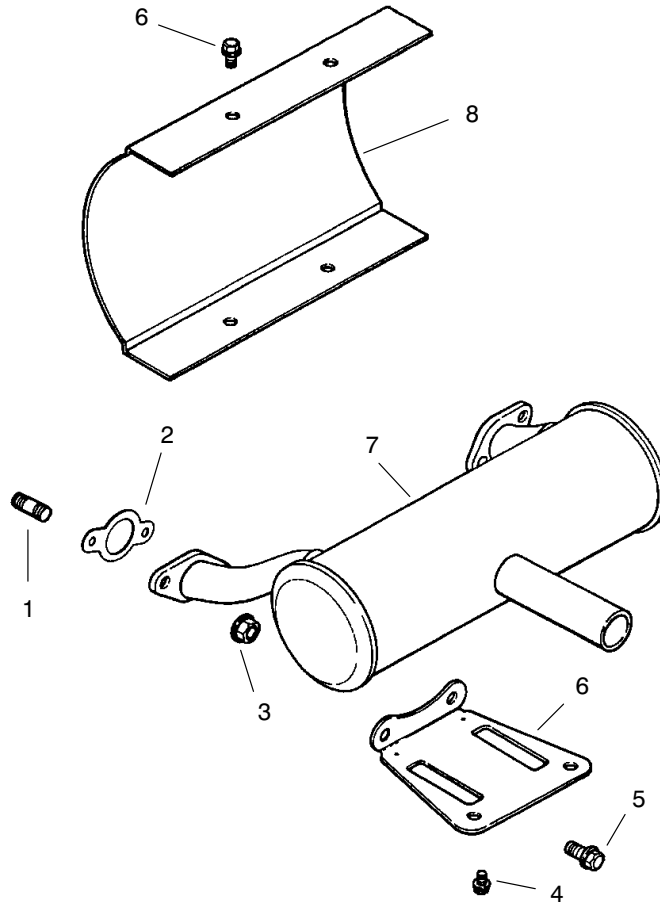


### Group 10 – Air Intake/Filtration (CH25S 68606 Kohler)

| Ref. No. | Part No.  | Description                             | No. Used |
|----------|-----------|---|----------|
| 1        | 24 753 05 | Kit, air cleaner<br>(Includes 2-5, 12)  | 1        |
| 2        | 54 755 01 | Kit, air cleaner knob<br>(Includes 3,4) | 1        |
| 3        | 25 341 03 | Knob, cover                             | 1        |
| 4        | 24 153 15 | O-Ring                                  | 1        |
| 5        | 24 096 24 | Cover, air cleaner                      | 1        |
| 6        | 12 100 01 | Wing Nut                                | 2        |
| 7        | 24 096 01 | Cover, inner air cleaner                | 1        |
| 8        | 230046    | Seal, inner air cleaner                 | 1        |

| Ref. No. | Part No.  | Description               | No. Used |
|----------|-----------|---------------------------|----------|
| 9        | 24 083 05 | Precleaner, element       | 1        |
| 10       | 24 083 03 | Element, air cleaner      | 1        |
| 11       | M-0645016 | Screw, hex flange         | 3        |
| 12       | 24 126 43 | Bracket, air cleaner base | 1        |
| 13       | 24 094 11 | Base, air cleaner         | 1        |
| 14       | M-0651055 | Screw, hex flange         | 4        |
| 15       | 24 164 14 | Manifold, intake          | 1        |
| 16       | 24 041 01 | Gasket, intake manifold   | 2        |
| 17       | 24 041 06 | Gasket, air cleaner base  | 1        |

Obtain Parts From Kohler



### Group 11 – Exhaust (CH25S 68606 Kohler)

| Ref. No. | Part No.  | Description                      | No. Used |
|----------|-----------|----------------------------------|----------|
| 1        | 25 072 04 | Stud                             | 4        |
| 2        | 24 041 02 | Gasket, exhaust                  | 2        |
| 3        | M-0841080 | Nut, hex flange                  | 4        |
| 4        | M-0650012 | Screw, hex. flange               | 4        |
| 5        | M-0839020 |                                  | 2        |
| 6        | 24 126 12 | Bracket, muffler                 | 1        |
| 7        | 24 068 17 | Muffler Canister – Center Outlet | 1        |

| Ref. No. | Part No.  | Description            | No. Used |
|----------|-----------|------------------------|----------|
| 8        | 24 314 04 | Shield, heat           | 1        |
|          |           | <b>Not Illustrated</b> |          |
|          | 24 522 85 | Short Block            | 1        |
|          | 24 782 01 | Miniblock              | 1        |
|          | 54 755 23 | Gasket Set             | 1        |

Obtain Parts From Kohler

# TORO PART NUMBER INDEX

| Part No. | Pg. No. | Ref. No. | Qty. | Description                  | Part No. | Pg. No. | Ref. No. | Qty. | Description             |
|----------|---------|----------|------|------------------------------|----------|---------|----------|------|-------------------------|
| E303077  | 8       | 1        | 6    | Clamp – Gas Line             | E603807  | 5       | 7        | 2    | Spring – Neutral Return |
| E303105  | 5       | 1        | 2    | Yoke – Adjustable            | E603826  | 6       | 16       | 3    | Clamp – Hose            |
| E303287  | 11      | 21       | 5    | Tie – Plastic                | E603827  | 6       | 17       | 5    | Clamp – Hose            |
| E303335  | 3       | 25       | 1    | Tie – Plastic                | E603841  | 7       | 51       | 2    | Pump – Hydro            |
| E303335  | 8       | 4        | 1    | Tie – Plastic                | E603903  | 5       | 9        | 4    | Spacer                  |
| E303335  | 9       | 2        | 1    | Tie – Plastic                | E603987  | 6       | 18       | 1    | Elbow                   |
| E303335  | 11      | 31       | 2    | Tie – Plastic                | E603988  | 6       | 19       | 1    | Elbow                   |
| E303428  | 9       | 13       | 1    | Elbow                        | E603989  | 6       | 20       | 2    | Elbow                   |
| E303435  | 8       | 24       | 4    | Washer – Bellevue            | E603990  | 6       | 21       | 4    | Adapter                 |
| E323229  | 11      | 32       | 1    | Clip – Loom                  | E613235  | 9       | 1        | 4    | Washer                  |
| E323235  | 9       | 36       | 2    | Washer Spring, Disc          | E632187  | 3       | 14       | 1    | Frame – Seat            |
| E323236  | 9       | 37       | 2    | Spacer                       | E632191  | 5       | 37       | 1    | Lever – LH              |
| E373034  | 13      | 10       | 3    | Washer – Swivel              | E632193  | 5       | 11       | 1    | Lever – RH              |
| E513006  | 6       | 3        | 1    | Filter – Head                | E632199  | 12      | 11       | 2    | Pin – Deck Strut        |
| E513011  | 3       | 15       | 1    | Nut – Wheel                  | E632208  | 5       | 12       | 2    | Arm – Pump Control      |
| E513034  | 6       | 33:1     | 2    | Bearing – Pivot              | E632217  | 4       | 5        | 1    | Shaft – Brake           |
| E513034  | 10      | 14:1     | 2    | Bearing – Pivot              | E632219  | 1       | 7        | 1    | Arm – Deck Lift         |
| E513075  | 11      | 33       | 1    | Switch – 12v Solenoid        | E632281  | 6       | 24       | 1    | 12" Low Pressure Hose   |
| E513140  | 4       | 1        | 2    | Bearing, Control             | E632282  | 6       | 25       | 1    | 13" Low Pressure Hose   |
| E513152  | 11      | 15       | 1    | Switch – Seat                | E632285  | 6       | 26       | 1    | Hose – Low Pressure     |
| E513167  | 6       | 5        | 1    | Cap – Hydraulic Reservoir    | E632286  | 6       | 27       | 1    | Hose – Low Pressure     |
| E513180  | 11      | 16       | 1    | Actuator – Switch, Seat      | E632324  | 1       | 5        | 1    | Lift Lever ASM          |
| E513374  | 11      | 26       | 1    | Meter – Engine Hours         | E632489  | 4       | 4        | 1    | Lever – Brakepoint      |
| E513435  | 14      | 4        | 3    | Washer – Spring              | E632511  | 2       | 8        | 2    | Caster                  |
| E513592  | 3       | 26       | 1    | Knob – Ball, Red             | E632690  | 12      | 10       | 2    | Strut                   |
| E513645  | 8       | 6        | 2    | Bushing – Valve, Fuel        | E632714  | 4       | 6        | 1    | Bracket – Brake, LH     |
| E513658  | 3       | 29       | 2    | Bumper – Catcher, Grass      | E632715  | 4       | 33       | 1    | Bracket – Brake, RH     |
| E513747  | 3       | 11:2     | 1    | Decal – Battery              | E632802  | 2       | 13       | 1    | Weight                  |
| E513748  | 9       | 11:2     | 1    | Decal – Guard                | E632899  | 1       | 16       | 1    | Plate – Deck Lift       |
| E513762  | 3       | 24       | 1    | Clip                         | E632911  | 5       | 13       | 1    | Motion Control          |
| E513762  | 7       | 56       | 1    | Clip                         | E632912  | 5       | 14       | 1    | Motion Control          |
| E513762  | 8       | 3        | 2    | Clip                         | E633002  | 21      | 1:6:1    | 1    | Tire                    |
| E513762  | 11      | 23       | 1    | Clip                         | E633007  | 3       | 12       | 2    | Wheel & Tire ASM        |
| E513840  | 6       | 7        | 2    | Elbow – 90                   | E633008  | 3       | 12:1     | 1    | Tire                    |
| E513929  | 3       | 11:4     | 1    | Decal – Drive Release        | E633009  | 3       | 12:2     | 1    | Wheel                   |
| E522217  | 6       | 8        | 1    | Low Pressure Hose ASM        | E633023  | 8       | 9        | 6    | Stud                    |
| E522424  | 11      | 11       | 1    | Spring Mount                 | E633029  | 12      | 8        | 2    | End – Rod, Spherical    |
| E523027  | 5       | 3        | 2    | Damper – Control             | E633068  | 1       | 12       | 2    | Arm – Deck Lift         |
| E523103  | 6       | 9        | 1    | Gasket – Tank/Cap            | E633080  | 1       | 18       | 1    | Bushing – Lift Lever    |
| E523157  | 4       | 32       | 2    | Spacer                       | E633082  | 1       | 17       | 1    | Bushing – Lift Lever    |
| E523281  | 11      | 34       | 1    | Cable – Battery              | E633096  | 1       | 28       | 2    | Rod – Deck Lift         |
| E523328  | 6       | 11       | 2    | Motor – Wheel                | E633097  | 1       | 20       | 1    | Pin – Hitch w/Lanyard   |
| E523415  | 11      | 10       | 1    | Spring – Switch, Seat        | E633099  | 9       | 9        | 1    | Clutch – Magstop        |
| E523420  | 9       | 3        | 2    | Bumper                       | E633102  | 4       | 12       | 2    | Bearing – Side Flange   |
| E523552  | 6       | 2:2      | 1    | Decal – Hot Surface          | E633102  | 5       | 16       | 4    | Bearing – Side Flange   |
| E543017  | 5       | 4        | 2    | Ball Joint                   | E633110  | 11      | 29       | 1    | Switch – Brake          |
| E543070  | 11      | 25       | 1    | Switch – Ignition            | E633111  | 11      | 20       | 2    | Switch – Drive Lever    |
| E543084  | 11      | 36       | 1    | Wire – Starter Solenoid      | E633131  | 4       | 13       | 4    | Yoke – Brake Linkage    |
| E543232  | 9       | 12       | 1    | Nipple                       | E633144  | 4       | 14       | 2    | Pin – Trunion           |
| E543277  | 8       | 7        | 2    | Elbow – Fuel Tank            | E633152  | 5       | 17       | 2    | Ball Joint – LH Thread  |
| E543316  | 11      | 22       | 1    | Module – Safety              | E633153  | 5       | 15       | 2    | Linkage                 |
| E543391  | 11      | 5        | 1    | Insulator – Battery          | E633166  | 10      | 12       | 1    | Idler – Pulley          |
| E543393  | 11      | 35       | 3    | Insulator – Solenoid         | E633167  | 6       | 31       | 1    | Pulley – Idler          |
| E543401  | 3       | 2:5      | 4    | Spacer – Track               | E633177  | 5       | 18       | 2    | Arm                     |
| E543407  | 3       | 2:1      | 1    | Cushion – Seat               | E633179  | 9       | 10       | 1    | Spacer – Clutch         |
| E543456  | 8       | 8        | 2    | Fuel Line – 21.5             | E633181  | 11      | 18       | 4    | Plate – Tapped          |
| E543511  | 2       | 7        | 2    | Seal – Grease                | E633257  | 5       | 19       | 2    | Grip – Motion Control   |
| E543513  | 2       | 1        | 2    | Cap – Grease                 | E633268  | 4       | 17       | 1    | Grip – Brake Lever      |
| E543792  | 11      | 3        | 2    | Wingnut – Nyloc              | E633293  | 3       | 16       | 1    | Rod – Seat Holdup       |
| E603050  | 10      | 6        | 1    | Bushing Spacer               | E633295  | 1       | 6        | 1    | Grip – Lift Lever       |
| E603336  | 3       | 10       | 1    | Control – Choke, Push – Pull | E633306  | 11      | 6        | 1    | Wire – Starter          |
| E603384  | 6       | 12       | 1    | Bushing – Idler Pivot        | E633307  | 11      | 4        | 1    | Wire – Ground           |
| E603384  | 10      | 7        | 1    | Bushing – Idler Pivot        | E633325  | 1       | 8        | 1    | Spring – Compression    |
| E603401  | 10      | 23       | 1    | Spacer – Fender              | E633335  | 6       | 32       | 2    | Hose – Low Pressure     |
| E603402  | 10      | 11       | 1    | Spring – Extension           | E633345  | 1       | 37       | 1    | Decal – Deck Height     |
| E603413  | 6       | 13       | 1    | Spring – Extension           | E633346  | 3       | 13:3     | 1    | Decal – Fuel Valve      |
| E603479  | 11      | 2        | 1    | Battery – 12v                | E633347  | 8       | 12       | 1    | Valve – Fuel Line       |
| E603496  | 10      | 9        | 2    | Bushing – Idler              | E633348  | 8       | 13       | 1    | Fuel Line               |
| E603610  | 9       | 6        | 2    | Washer – Spring, Disc        | E633349  | 8       | 14       | 6    | Spring – Fuel Tank      |
| E603721  | 6       | 14       | 1    | Fitting                      | E633354  | 3       | 11:3     | 2    | Decal – Motion Control  |
| E603722  | 6       | 15       | 1    | Fitting                      | E633380  | 4       | 10       | 4    | Spacer – Short, Wheel   |
| E603735  | 5       | 5        | 2    | Bushing – Nylon Flanged      | E633382  | 4       | 11       | 4    | Spacer – Long, Wheel    |
| E603737  | 5       | 6        | 2    | Bolt – Neutral Return        | E633396  | 9       | 34       | 1    | Clip – Loom             |
| E603805  | 10      | 10       | 1    | Idler                        | E633396  | 11      | 28       | 3    | Clip – Loom             |

\*Not Illustrated

# TORO PART NUMBER INDEX (Cont.)

3322-731

| Part No. | Pg. No. | Qty. | Ref. No. | Description             | Part No.   | Pg. No. | Qty. | Ref. No. | Description             |
|----------|---------|------|----------|-------------------------|------------|---------|------|----------|-------------------------|
| E633441  | 1       | 30   | 4        | Swivel-Deck Mount       | E808285    | 4       | 19   | 4        | Pin-Clevis              |
| E633447  | 12      | 3    | 4        | Chain - Deck Lift       | E808505    | 1       | 11   | 5        | Ring-Snap               |
| E633454  | 4       | 2    | 2        | Spring-Brake            | E808514    | 4       | 30   | 2        | Ring-Retaining          |
| E633462  | 9       | 11:3 | 1        | Decal-Important         | E809036    | 6       | 11:1 | 1        | Nut-Castle              |
| E633466  | 9       | 17   | 1        | Guard-Muffler           | E809057    | 5       | 8    | 4        | Bolt-Shoulder           |
| E633477  | 4       | 3    | 3        | Rod-Brake               | E809076    | 9       | 35   | 2        | Screw-HH                |
| E633508  | 2       | 3    | 6        | Washer-Bellevue         | E811007    | 4       | 21   | 2        | Fitting-Grease          |
| E633543  | 9       | 5    | 1        | Strap-Clutch/Brake      | E811008    | 6       | 33:3 | 1        | Fitting-Grease          |
| E633545  | 9       | 4    | 2        | Spacer-Grommet          | E811008    | 10      | 14:3 | 1        | Fitting-Grease          |
| E633553  | 1       | 3:2  | 3        | Pad - Antiskid          | E811010    | 1       | 1:3  | 2        | Plug-Caster Swivel      |
| E633567  | 6       | 29   | 1        | Sheave                  | E816001    | 11      | 19   | 2        | Fuse-Blade Type 20 Amp  |
| E633568  | 6       | 28   | 2        | Sheave                  | 7-0081     | 15      | 8    | 1        | Washer - Flat           |
| E633579  | 2       | 11:3 | 1        | Spacer-Front Caster     | 7-4150     | 14      | 2:11 | 1        | Washer-Pinion           |
| E633580  | 2       | 11:4 | 2        | Seal-Bearing            | 13-2840    | 7       | 45   | 1        | Square Key              |
| E633581  | 2       | 11:5 | 2        | Spacer-Bearing          | 27-0920    | 14      | 2:2  | 1        | Shaft-Spindle           |
| E633582  | 2       | 11:6 | 1        | Wheel & Tire ASM        | 27-0950    | 14      | 1:9  | 1        | Spacer-Bearing, Spindle |
| E633583  | 211:6:2 |      | 1        | Wheel                   | 27-0950    | 14      | 2:3  | 1        | Spacer-Bearing, Spindle |
| E633587  | 1       | 35   | 1        | Handle                  | 27-0990    | 14      | 3    | 3        | Blade                   |
| E633613  | 9       | 20   | 2        | Bracket-Guard, Top      | 27-1160    | 15      | 16   | 1        | Deck Belt               |
| E633615  | 9       | 7    | 1        | Guard, Clutch           | 29-5590-01 | 13      | 14   | 2        | Bracket-Pivot           |
| E633630  | 9       | 38   | 2        | Grommet                 | 40-6230    | 13      | 17   | 2        | Spring                  |
| E633651  | 11      | 37   | 2        | Bolt-Battery Hold Down  | 43-8480    | 13      | 1:2  | 1        | Decal-Danger            |
| E633652  | 11      | 1    | 1        | Strap-Battery Hold Down | 46-8530    | 14      | 1:7  | 1        | Bearing ASM             |
| E633673  | 11      | 27   | 1        | Switch-PTO              | 46-8530    | 14      | 2:4  | 1        | Bearing ASM             |
| E633693  | 4       | 9    | 2        | Brake Band              | 51-3551    | 14      | 1:2  | 1        | Shaft-Spindle           |
| E633696  | 3       | 9    | 1        | Cable-Throttle          | 51-3640    | 15      | 2    | 1        | Idler Pivot Sleeve      |
| E633705  | 3       | 2    | 1        | Seat ASM w/Armrest      | 51-3650    | 15      | 10   | 1        | Spring - Extension      |
| E633706  | 1       | 36   | 1        | Decal-Deck Height       | 54-9220    | 13      | 18:2 | 1        | Decal-Danger            |
| E633709  | 3       | 2:2  | 1        | Cushion-Backrest        | 55-7640-03 | 15      | 1    | 1        | Idler Arm               |
| E633710  | 3       | 2:3  | 1        | Armrest - RH            | 55-7650    | 15      | 11   | 1        | Spring Plate            |
| E633711  | 3       | 2:4  | 1        | Armrest - LH            | 61-4160    | 14      | 1:6  | 1        | Spindle                 |
| E633736  | 3       | 42   | 1        | Decal - Z255            | 61-4160    | 14      | 2:10 | 1        | Spindle                 |
| E633737  | 1       | 3:5  | 1        | Decal - Z-Master        | 63-8360    | 11      | 38   | 2        | Key-Ignition w/Shield   |
| E633749  | 6       | 30   | 1        | Belt                    | 65-5940    | 15      | 7    | 1        | Idler Pulley            |
| E633750  | 6       | 6    | 1        | Filter-Hydro            | 65-5950    | 15      | 6    | 1        | Bushing-Pulley          |
| E633752  | 6       | 6    | 1        | Filter-Winter Hydro     | 66-1340    | 13      | 1:4  | 1        | Decal-Danger            |
| E633766  | 1       | 3:3  | 1        | Decal-Check             | 66-6380    | 13      | 1:5  | 1        | Decal-Danger            |
| E633771  | 9       | 44   | 1        | Decal - Belt, Pump      | 67-5360    | 13      | 21:1 | 1        | Decal-Danger            |
| E633774  | 6       | 1    | 2        | Hose-High Pressure      | 67-5360    | 13      | 22:1 | 1        | Decal-Danger            |
| E633775  | 6       | 22   | 2        | Hose-High Pressure      | 68-2730    | 13      | 9    | 5        | Gage Wheel              |
| E633786  | 6       | 10   | 4        | Elbow 90 DEG            | 74-0720    | 3       | 33   | 1        | Tube-Manual             |
| E633818  | 1       | 1:2  | 1        | Decal                   | 92-5816    | 14      | 1:10 | 1        | Flangebolt-Blade        |
| E633830  | 9       | 42   | 1        | Kohler Command Ch25     | 92-5816    | 14      | 5    | 2        | Flangebolt-Blade        |
| E633859  | 3       | 2:7  | 1        | Frame-Seat              | 92-5836    | 14      | 1:4  | 1        | Washer - Axle           |
| E633889  | 1       | 15   | 1        | Plate - Deck Lift       | 93-3101    | 8       | 5    | 2        | Cap-Fuel                |
| E633926  | 4       | 15:2 | 4        | Stud-Wheel              | 93-7340    | 3       | 34   | 1        | Decal-Toro              |
| E633964  | 3       | 1    | 1        | Stop - Park Brake       | 93-7818    | 13      | 1:9  | 1        | Decal-Blade Bolt Torque |
| E633988  | 9       | 8    | 1        | Spacer, Clutch Anchor   | 98-3269    | 13      | 1:7  | 1        | Decal-Made In USA       |
| E634277  | 6       | 33   | 1        | Arm ASM                 | 98-3798    | 13      | 1:3  | 1        | Decal-Gage Wheel        |
| E634662  | 2       | 11   | 2        | Caster Wheel ASM        | 98-3799    | 13      | 1:6  | 1        | Decal-Belt Routing      |
| E634796  | 9       | 14   | 1        | Shield-LH               | 98-4387    | 3       | 13:4 | 1        | Decal - Ear Protection  |
| E634797  | 9       | 43   | 1        | Shield-RH               | 98-5953    | 13      | 36   | 1        | Decal - Sfs             |
| E634861  | 1       | 1    | 1        | Frame ASM               | 98-5954    | 1       | 3:4  | 1        | Decal - Cover Missing   |
| E634862  | 9       | 11   | 1        | Shield & Decal ASM      | 98-5954    | 13      | 1:8  | 3        | Decal - Cover Missing   |
| E634927  | 4       | 15   | 2        | Hub And Drum ASM        | 98-5963    | 13      | 21   | 1        | Assembly - RH Cover     |
| E643119  | 11      | 30   | 1        | Harness-Wiring          | 98-5965    | 13      | 22   | 1        | Assembly - LH Cover     |
| E643252  | 9       | 11:1 | 1        | Decal - Drive, Belt     | 98-5967    | 13      | 8    | 1        | Spacer-Wheel            |
| E643255  | 3       | 2:6  | 1        | Track-Locking, 4"       | 98-5975    | 1       | 23   | 12       | Washer                  |
| E653009  | 1       | 32   | 2        | Spring-Lift Assist      | 98-5975    | 5       | 2    | 4        | Washer                  |
| E800282  | 11      | 7    | 1        | Screw-HH                | 98-5975    | 10      | 1    | 5        | Washer                  |
| E800805  | 6       | 37   | 1        | Screw-HH                | 98-5975    | 13      | 3    | 3        | Washer                  |
| E800805  | 10      | 18   | 1        | Screw-HH                | 98-5980    | 15      | 13   | 1        | Guide - Belt            |
| E803022  | 5       | 24   | 2        | Screw                   | 98-5984    | 13      | 18   | 1        | Deflector ASM           |
| E803022  | 6       | 39   | 2        | Screw                   | 99-2842    | 13      | 12   | 3        | Spacer-Wheel            |
| E803028  | 11      | 17   | 8        | Screw                   | 99-4607    | 8       | 11   | 1        | Tank - RH Fuel          |
| E803071  | 8       | 23   | 4        | Screw                   | 99-4608    | 8       | 10   | 1        | Tank - LH Fuel          |
| E806005  | 1       | 21   | 1        | Hairpin                 | 99-4611    | 3       | 13:2 | 1        | Decal-Control Panel     |
| E806800  | 4       | 28   | 2        | Pin-Cotter              | 99-4613    | 14      | 2:5  | 1        | Pulley & Hub            |
| E807020  | 6       | 11:2 | 1        | Woodruff-Key            | 99-4622    | 1       | 3    | 1        | Floorpan ASM            |
| E807272  | 7       | 46   | 2        | Key                     | 99-4623    | 3       | 13   | 1        | Console ASM             |
| E807513  | 3       | 22   | 2        | Bolt-CARR               | 99-4624    | 3       | 11   | 1        | Frame ASM               |
| E808280  | 5       | 33   | 2        | Pin-Clevis              | 99-4625    | 6       | 2    | 1        | Hydraulic Tank ASM      |
| E808283  | 4       | 29   | 2        | Pin-Clevis              | 99-4632    | 8       | 21   | 1        | Decal-Control Panel     |
| E808284  | 1       | 14   | 2        | Pin-Clevis              | 99-4639    | 14      | 2    | 2        | Spindle ASM             |

\*Not Illustrated

# TORO PART NUMBER INDEX (Cont.)

| Part No. | Pg. No. | Ref. No. | Qty. | Description          | Part No. | Pg. No. | Ref. No. | Qty. | Description      |
|----------|---------|----------|------|----------------------|----------|---------|----------|------|------------------|
| 99-4677  | 10      | 14       | 1    | Arm ASM              | 3242-4   | 6       | 41       | 2    | Screw-Sq Hd Set  |
| 99-4656  | 8       | 2        | 1    | Panel-Control        | 3242-6   | 6       | 40       | 2    | Screw-Sq Hd Set  |
| 99-4940  | 8       | 22       | 1    | Shield-Control Panel | 3253-3   | 6       | 42       | 2    | Washer-Lock/Sp   |
| 100-2312 | 14      | 1:5      | 1    | Pulley And Hub ASM   | 3253-3   | 8       | 18       | 2    | Washer-Lock/Sp   |
| 100-2313 | 14      | 1        | 1    | Spindle Housing ASM  | 3253-4   | 8       | 19       | 4    | Washer-Lock/Sp   |
| 100-2314 | 15      | 17       | 1    | 52" Belt Eng/Deck    | 3253-7   | 4       | 25       | 8    | Washer-Lock/Sp   |
| 100-2338 | 13      | 1        | 1    | Deck ASM             | 3253-8   | 12      | 6        | 2    | Washer-Lock/Sp   |
| 249-21   | 13      | 25       | 2    | Clamp-Slotted        | 3256-2   | 5       | 29       | 2    | Washer-Flat      |
| 2412-120 | 3       | 30       | 2    | R Clamp              | 3256-2   | 9       | 29       | 4    | Washer-Flat      |
| 253-139  | 14      | 1:8      | 2    | Seal-Oil             | 3256-2   | 11      | 8        | 2    | Washer-Flat      |
| 253-139  | 14      | 2:1      | 2    | Seal-Oil             | 3256-3   | 5       | 30       | 4    | Washer-Flat      |
| 254-72   | 2       | 5        | 4    | Cup-Bearing, Outer   | 3256-3   | 6       | 43       | 1    | Washer-Flat      |
| 254-78   | 2       | 11:1     | 2    | Bearing-Roller, Cone | 3256-3   | 9       | 30       | 1    | Washer-Flat      |
| 254-79   | 2       | 11:6:3   | 2    | Bearing-Roller, Cup  | 3256-4   | 4       | 26       | 4    | Washer-Flat      |
| 254-94   | 2       | 4        | 4    | Bearing-Cone         | 3256-4   | 7       | 44       | 1    | Washer-Flat      |
| 302-2    | 14      | 1:1      | 1    | Fitting-Grease       | 3256-4   | 10      | 24       | 3    | Washer-Flat      |
| 302-2    | 14      | 2:7      | 1    | Fitting-Grease       | 3256-7   | 1       | 31       | 2    | Washer-Flat      |
| 302-19   | 12      | 4        | 4    | Fitting - Grease     | 3256-23  | 3       | 44       | 6    | Washer-Flat      |
| 320-19   | 1       | 1:4      | 5    | Fitting - Grease     | 3256-23  | 5       | 31       | 4    | Washer-Flat      |
| 321-1    | 13      | 5        | 6    | Screw-HH             | 3256-23  | 8       | 20       | 10   | Washer-Flat      |
| 321-3    | 7       | 50       | 2    | Screw-HH             | 3256-24  | 1       | 9        | 3    | Washer-Flat      |
| 321-3    | 8       | 15       | 2    | Screw-HH             | 3256-24  | 10      | 20       | 4    | Washer-Flat      |
| 321-4    | 3       | 27       | 1    | Screw-HH             | 3256-24  | 14      | 8        | 1    | Washer-Flat      |
| 321-4    | 6       | 34       | 2    | Screw-HH             | 3256-24  | 15      | 3        | 3    | Washer-Flat      |
| 321-4    | 9       | 22       | 10   | Screw-HH             | 3256-27  | 1       | 34       | 2    | Washer-Flat      |
| 321-4    | 11      | 12       | 8    | Screw-HH             | 3256-28  | 4       | 31       | 2    | Washer-Flat      |
| 321-6    | 11      | 24       | 1    | Screw-HH             | 3256-29  | 1       | 27       | 4    | Washer-Flat      |
| 322-3    | 3       | 4        | 8    | Screw-HH             | 3272-5   | 5       | 32       | 2    | Pin-Cotter       |
| 322-3    | 8       | 16       | 4    | Screw-HH             | 3272-10  | 1       | 13       | 2    | Pin-Cotter       |
| 322-3    | 12      | 12       | 2    | Screw-HH             | 3272-10  | 4       | 27       | 7    | Pin-Cotter       |
| 322-5    | 3       | 17       | 1    | Screw-HH             | 3290-321 | 13      | 26       | 4    | Screw-HWH        |
| 322-6    | 5       | 20       | 4    | Screw-HH             | 3290-357 | 1       | 24       | 17   | Nut-Lock         |
| 322-6    | 9       | 39       | 1    | Screw-HH             | 3290-357 | 4       | 24       | 4    | Nut-Lock         |
| 322-19   | 9       | 40       | 1    | Screw-HH             | 3290-357 | 5       | 35       | 8    | Nut-Lock         |
| 323-4    | 4       | 18       | 4    | Screw-HH             | 3290-357 | 7       | 47       | 8    | Nut-Lock         |
| 323-4    | 5       | 21       | 8    | Screw-HH             | 3290-357 | 9       | 32       | 4    | Nut-Lock         |
| 323-6    | 1       | 25       | 3    | Screw-HH             | 3290-357 | 10      | 21       | 10   | Nut-Lock         |
| 323-6    | 3       | 5        | 2    | Screw-HH             | 3290-357 | 13      | 11       | 7    | Nut-Lock         |
| 323-6    | 5       | 22       | 4    | Screw-HH             | 3296-5   | 13      | 20       | 2    | Nut-Lock Ni      |
| 323-6    | 9       | 24       | 6    | Screw-HH             | 3296-5   | 15      | 9        | 1    | Nut-Lock Ni      |
| 323-7    | 1       | 26       | 12   | Screw-HH             | 3296-29  | 8       | 17       | 6    | Nut-Lock Ni      |
| 323-7    | 6       | 38       | 4    | Screw-HH             | 3296-29  | 9       | 41       | 1    | Nut-Lock Ni      |
| 323-8    | 6       | 35       | 1    | Screw-HH             | 3296-45  | 2       | 11:8     | 1    | Nut-Lock Ni      |
| 323-9    | 1       | 22       | 2    | Screw-HH             | 32104-76 | 3       | 31       | 2    | Screw-Acorn Slot |
| 323-9    | 5       | 23       | 6    | Screw-HH             | 32128-17 | 13      | 24       | 4    | Nut-Flange Lock  |
| 323-9    | 6       | 36       | 1    | Screw-HH             | 32128-20 | 3       | 23       | 12   | Nut-Hex Flange   |
| 323-9    | 10      | 16       | 5    | Screw-HH             | 32128-20 | 5       | 34       | 4    | Nut-Hex Flange   |
| 323-11   | 10      | 15       | 2    | Screw-HH             | 32128-20 | 9       | 31       | 1    | Nut-Hex Flange   |
| 323-11   | 15      | 4        | 1    | Screw-HH             | 32128-20 | 11      | 9        | 2    | Nut-Hex Flange   |
| 323-13   | 1       | 19       | 1    | Screw-HH             | 32128-20 | 12      | 13       | 2    | Nut-Hex Flange   |
| 323-13   | 10      | 17       | 1    | Screw-HH             | 32128-21 | 14      | 7        | 16   | Nut-Flange Lock  |
| 323-21   | 3       | 18       | 2    | Screw-HH             | 32128-21 | 15      | 14       | 3    | Nut-Flange Lock  |
| 323-28   | 13      | 7        | 1    | Screw-HH             | 32128-33 | 3       | 28       | 1    | Nut-Hex Flange   |
| 324-6    | 12      | 2        | 8    | Screw-HH             | 32128-33 | 5       | 36       | 4    | Nut-Hex Flange   |
| 325-17   | 4       | 20       | 8    | Screw-HH             | 32128-33 | 7       | 48       | 2    | Nut-Hex Flange   |
| 325-36   | 2       | 11:7     | 1    | Screw-HH             | 32128-33 | 9       | 33       | 7    | Nut-Hex Flange   |
| 327-11   | 12      | 7        | 2    | Screw-HH             | 32128-33 | 11      | 13       | 11   | Nut-Hex Flange   |
| 3211-8   | 15      | 5        | 1    | Screw-HH             | 32128-33 | 13      | 6        | 6    | Nut-Hex Flange   |
| 3211-15  | 13      | 19       | 2    | Screw-HH             | 32128-37 | 12      | 1        | 16   | Nut-Whizlock     |
| 3212-10  | 9       | 25       | 1    | Screw-HH             | 32144-70 | 2       | 14       | 4    | Screw-Taptite    |
| 3217-9   | 4       | 22       | 8    | Nut-Hex              | 32146-2  | 1       | 10       | 7    | Nut-Lock Ni      |
| 3217-11  | 1       | 29       | 8    | Nut-Hex              | 32146-2  | 3       | 21       | 4    | Nut-Lock Ni      |
| 3217-11  | 12      | 5        | 2    | Nut-Hex              | 32146-2  | 5       | 25       | 6    | Nut-Lock Ni      |
| 3218-6   | 1       | 33       | 4    | Nut-Jam              | 32146-2  | 10      | 19       | 1    | Nut-Lock Ni      |
| 3219-2   | 5       | 26       | 10   | Nut-Hex              | 32146-4  | 3       | 20       | 2    | Nut-Lock Ni      |
| 3219-3   | 4       | 23       | 8    | Nut-Hex              | 32146-14 | 2       | 2        | 2    | Locknut          |
| 3219-6   | 12      | 9        | 2    | Nut-Hex              | 32146-17 | 9       | 27       | 4    | Nut-Lock         |
| 3220-2   | 5       | 28       | 2    | Nut-Jam              | 32146-18 | 3       | 19       | 2    | Nut-Lock         |
| 3220-20  | 5       | 27       | 2    | Nut-Jam LH           | 32146-20 | 14      | 1:3      | 1    | Nut-Jam          |
| 3230-18  | 13      | 15       | 4    | Screw-CARR           | 32146-20 | 14      | 2:8      | 1    | Nut-Jam          |
| 3231-22  | 14      | 6        | 16   | Screw-CARR           | 32152-1  | 13      | 16       | 4    | Nut-Lock         |
| 3231-22  | 15      | 12       | 1    | Screw-CARR           |          |         |          |      |                  |
| 3231-28  | 15      | 15       | 1    | Screw-CARR           |          |         |          |      |                  |

\*Not Illustrated