



Z-Master[®] 250 Series Z253

with 62" Side Discharge Mower

Model No. 74209—00000001 and Up

Parts Catalog

Ordering Replacement Parts

To order replacement parts, please supply: the part number, the quantity, and the description of each part desired.

Understanding Reference Numbers

Each identified part in an illustration has a reference number. The reference number for a part also appears in the parts list, along with other information about the part.

This catalog uses two special reference number formats, one to indicate parts in a service assembly and another to indicate the quantity of a given part in an illustration.

Service Assembly Reference Numbers

Parts in service assemblies have reference numbers in the form **a:b**. The **a** represents the reference number of the entire service assembly and the **b** represents a sequential number unique to each part within the service assembly.

For example, a wheel assembly might be identified by reference number **6**, the tire by **6:1**, the valve by **6:2**, and the wheel by **6:3**. When you order the assembly identified by reference number **6**, you receive all parts identified by reference numbers **6:1**, **6:2**, and **6:3**. However, you may also order any part individually.

Reference numbers of this type appear in illustrations and in part lists.

Reference Numbers Indicating Quantity

In an illustration, if a reference number indicates more than one part, the reference number has the form **nX y**. The **n** represents the quantity of the part, the **X** is the multiplication symbol, and the **y** represents the reference number.

For example, in an illustration, the reference number **2X 37** means that two of the parts identified by reference number **37** are indicated.

Contents

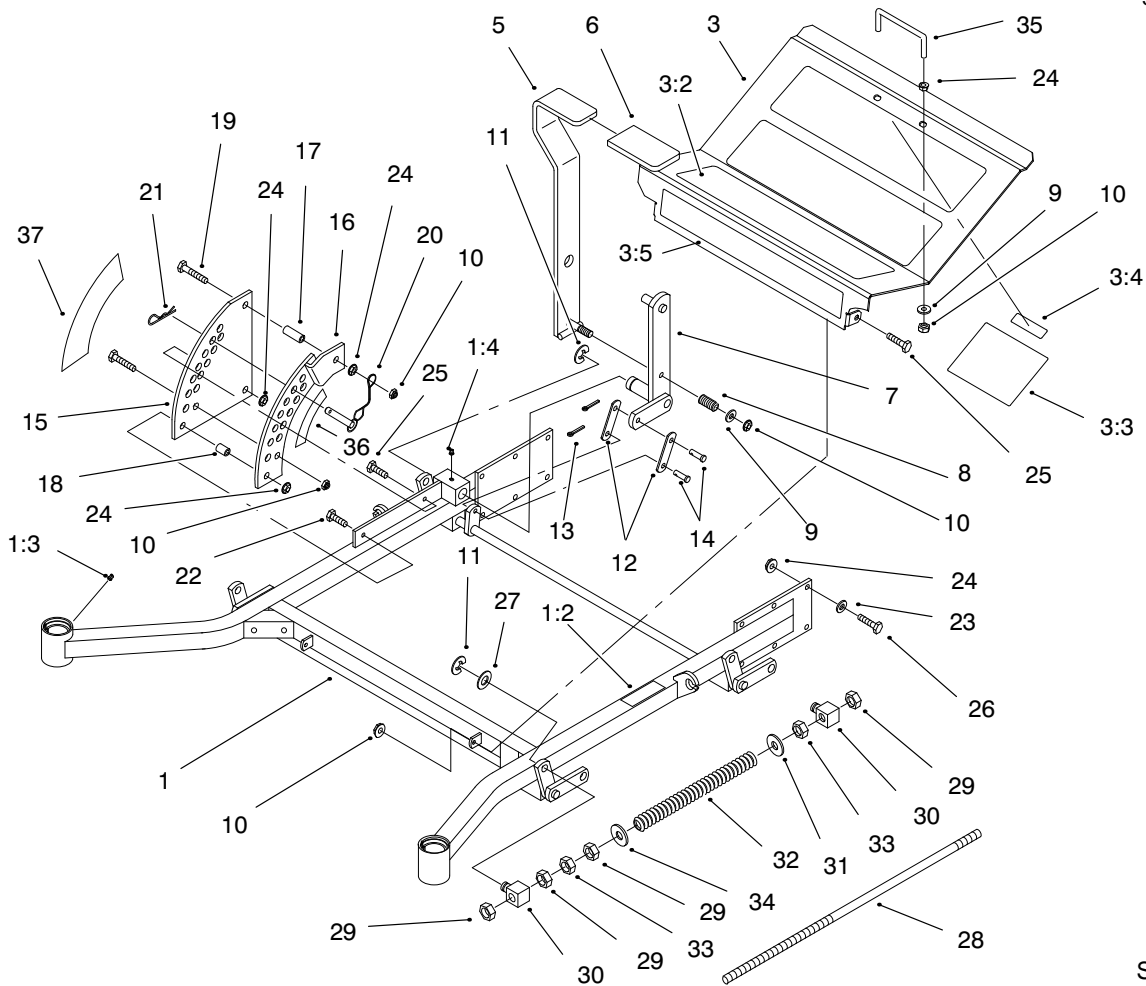
Description	Page	Description	Page
Front Frame Assembly	3	Shields And Clutch Assembly	11
Caster And Wheel Assembly	4	Idler Assembly	12
Rear Frame And Wheel Assembly	5	Electrical System Assembly	13
Brake And Wheel Hub Assembly	6	Frame And Deck Assembly	14
Control Panel Assembly	7	Deck, Deflector And Roller Assembly	15
Hydraulic System Assembly	8	Spindle And Pulley Assembly	16
Hydraulic System Assembly (Continued)	9	Belts And Idler Arm Assembly	17
Tank And Fuel Lines Assembly	10	Engine Assembly Pages	18

Part Description Abbreviations

Part descriptions in this catalog may include the following abbreviations.

Abbreviation	Meaning	Abbreviation	Meaning
AR	as required	INC	incorporated
ASM	assembly	LH	left hand
CARR	carriage	NI	nylon insert
DEG	degrees	PPH	Phillips pan head
FH	flat head	PTH	Phillips truss head
GA	gauge	PTO	power take off
HF	hex flange	RH	right hand
HH	hex head	SFH	slotted fillister head
HHF	hex head flange	SHH	slotted hex head
HLH	hex lag head	SQH	square head
HJ	hex jam	SHWH	slotted hex washer head
HOC	height-of-cut	SPH	slotted pan head
HS	hex socket	SRH	slotted round head
HSBH	hex socket button head	STD	standard
HSFH	hex socket flat head	TAP	self tapping
HSH	hex socket head	TTH	Torx truss head
HWH	hex washer head	WH	wing head
HWHTF	hex washer head thread forming		

PROTOTYPE

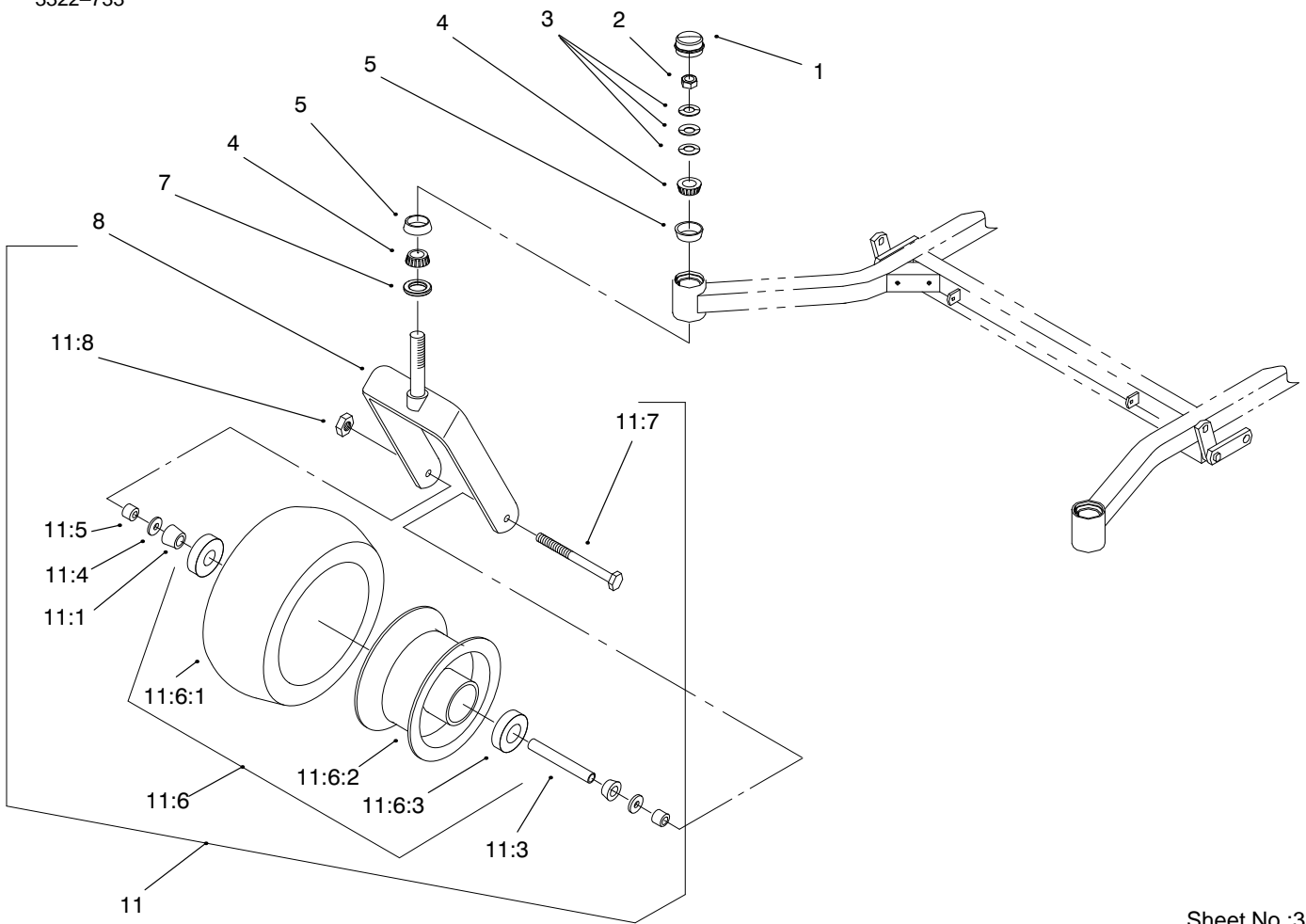


Sheet No.:2

Front Frame Assembly

Ref. No.	Part No.	Qty.	Description
1	99-4682	1	Frame ASM 62"
1:2	E633818	1	Decal
1:3	E811010	2	Plug-Caster Swivel
1:4	320-19	5	Fitting - Grease
3	99-4622	1	Floorpan ASM
3:2	E633553	3	Pad - Antiskid
3:3	E633766	1	Decal-Check
3:4	98-5954	1	Decal-Cover Missing
3:5	E633737	1	Decal- Z-Master
5	E632324	1	Lift Lever ASM
6	E633295	1	Grip-Lift Lever
7	E632219	1	Arm-Deck Lift
8	E633325	1	Spring-Compression
9	3256-24	1	Washer-Flat
10	32146-2	7	Nut-Lock Ni
11	E808505	5	Ring-Snap
12	E633068	2	Arm-Deck Lift
13	3272-10	2	Pin-Cotter
14	E808284	2	Pin-Clevis
15	E633889	1	Plate - Deck Lift
16	E632899	1	Plate-Deck Lift
17	E633082	1	Bushing-Lift Lever
18	E633080	1	Bushing-Lift Lever
19	323-13	1	Screw-HH
20	E633097	1	Pin-Hitch w/Lanyard
21	E806005	1	Hairpin

Ref. No.	Part No.	Qty.	Description
22	323-9	2	Screw-HH
23	98-5975	12	Washer
24	3290-357	17	Nut-Lock Flange
25	323-6	3	Screw-HH
26	323-7	12	Screw-HH
27	3256-29	4	Washer-Flat
28	E633096	2	Rod-Deck Lift
29	3217-11	8	Nut-Hex
30	E633441	4	Swivel-Deck Mount
31	3256-7	2	Washer-Flat
32	E633064	2	Spring-Deck Support
33	3218-6	4	Nut-Jam
34	3256-7	2	Washer-Flat
35	E633587	1	Handle
36	99-4687	1	Decal-Deck Height
37	99-4688	1	Decal-Deck Height

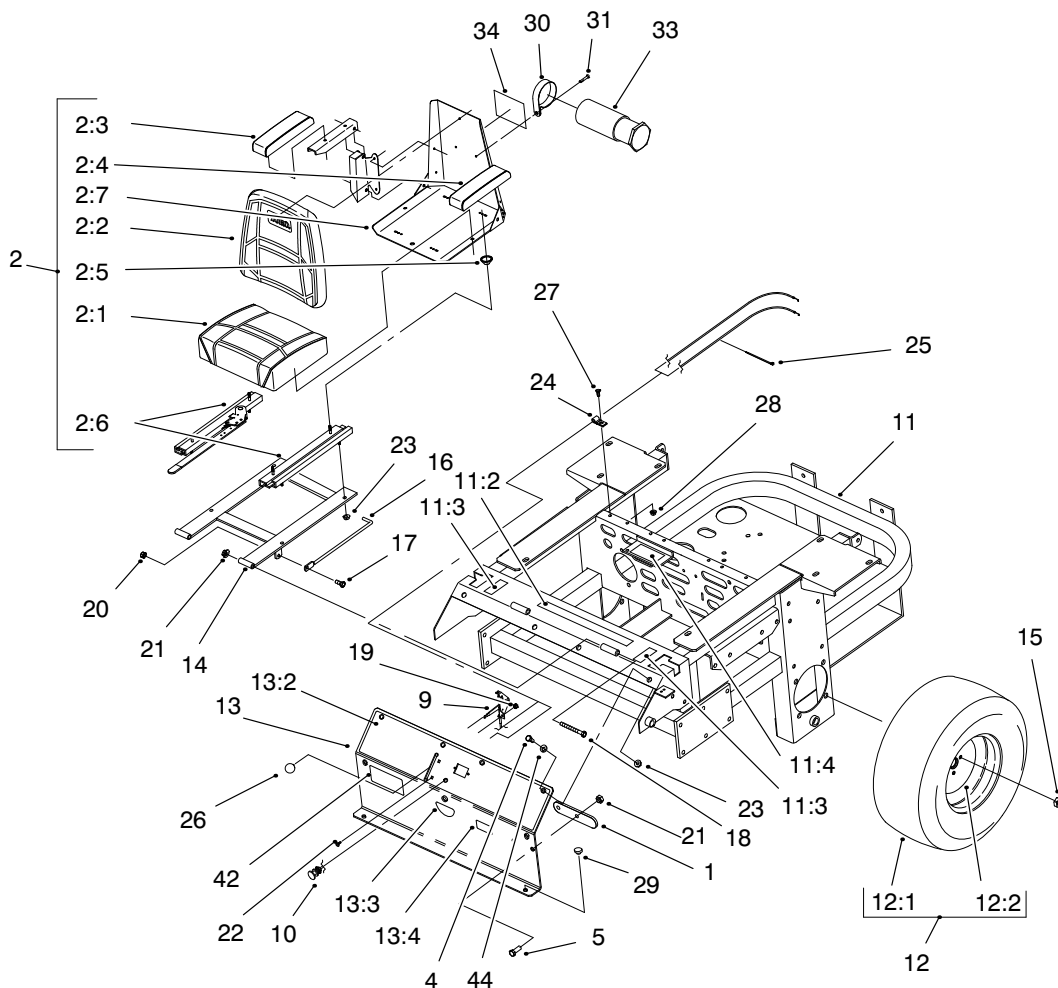


Sheet No.:3

Caster And Wheel Assembly

Ref. No.	Part No.	Qty.	Description
1	E543513	2	Cap-Grease
2	32146-14	2	Locknut
3	E633508	6	Washer-Belleview
4	254-94	4	Bearing-Taper/Cone
5	254-72	4	Bearing-Taper/Cup
7	E543511	2	Seal-Grease
8	E642111	2	Caster
11	E644251	2	Caster Wheel ASM
11:1	254-78	2	Bearing-Roller, Cone
11:3	E633959	1	Spacer-Front Caster
11:4	E633580	2	Seal-Bearing
11:5	E633581	2	Spacer-Bearing
11:6	E633971	1	Wheel & Tire ASM
11:6:1	E523009	1	Tire
11:6:2	E633987	1	Wheel
11:6:3	254-79	2	Bearing-Roller, Cup
11:7	325-24	1	Screw - HH
11:8	3296-45	1	Nut-Lock Ni

Ref. No.	Part No.	Qty.	Description

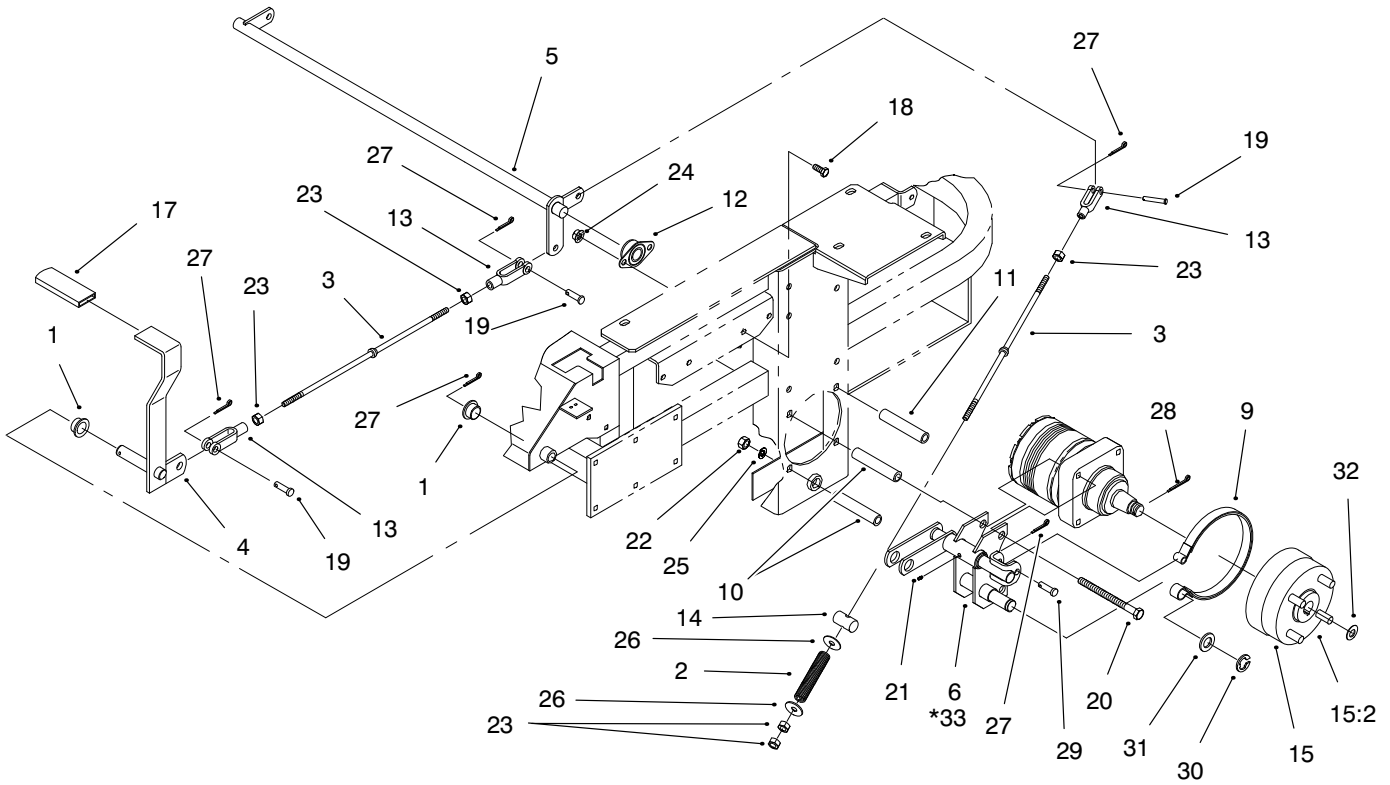


Sheet No.:4

Rear Frame And Wheel Assembly

Ref. No.	Part No.	Qty.	Description
1	E633964	1	Stop – Park Brake
2	E633705	1	Seat ASM w/Armrest
2:1	E543407	1	Cushion–Seat
2:2	E633709	1	Cushion–Backrest
2:3	E633710	1	Armrest – RH
2:4	E633711	1	Armrest – LH
2:5	E543401	4	Spacer–Track
2:6	E643255	1	Track–Locking, 4”
2:7	E633859	1	Frame–Seat
4	322–3	8	Screw–HH
5	323–6	2	Screw–HH
9	E633696	1	Cable–Throttle
10	E603336	1	Control–Choke, Push–Pull
11	99–4624	1	Frame ASM
11:2	E513747	1	Decal–Battery
11:3	E633354	2	Decal–Motion Control
11:4	E513929	1	Decal–Drive Release
12	E633970	2	Wheel & Tire ASM
12:1	E633993	1	Tire
12:2	E633992	1	Wheel
13	99–4623	1	Console ASM
13:2	99–4611	1	Decal–Control Panel
13:3	E633346	1	Decal–Fuel Valve
13:4	98–4387	1	Decal – Ear Protection
14	E632187	1	Frame–Seat

Ref. No.	Part No.	Qty.	Description
15	E513011	1	Nut–Wheel
16	E633293	1	Rod–Seat Holdup
17	322–5	1	Screw–HH
18	323–21	2	Screw–HH
19	32146–18	2	Nut–Lock
20	3296–41	2	Nut–Lock Ni
21	32146–2	2	Nut–Lock Ni
22	E807513	4	Bolt–CARR
23	32128–20	12	Nut–Hex Flange
24	E513762	1	Clip
25	E303335	1	Tie–Plastic
26	E513592	1	Knob–Ball, Red
27	321–4	1	Screw–HH
28	32128–33	1	Nut–Hex Flange
29	E513658	2	Bumper–Catcher, Grass
30	2412–120	2	R Clamp
31	32104–76	2	Screw–Acorn Slot
33	74–0720	1	Tube–Manual
34	93–7340	1	Decal–Toro
42	99–4628	1	Decal–Z253
44	3256–23	6	Washer–Flat



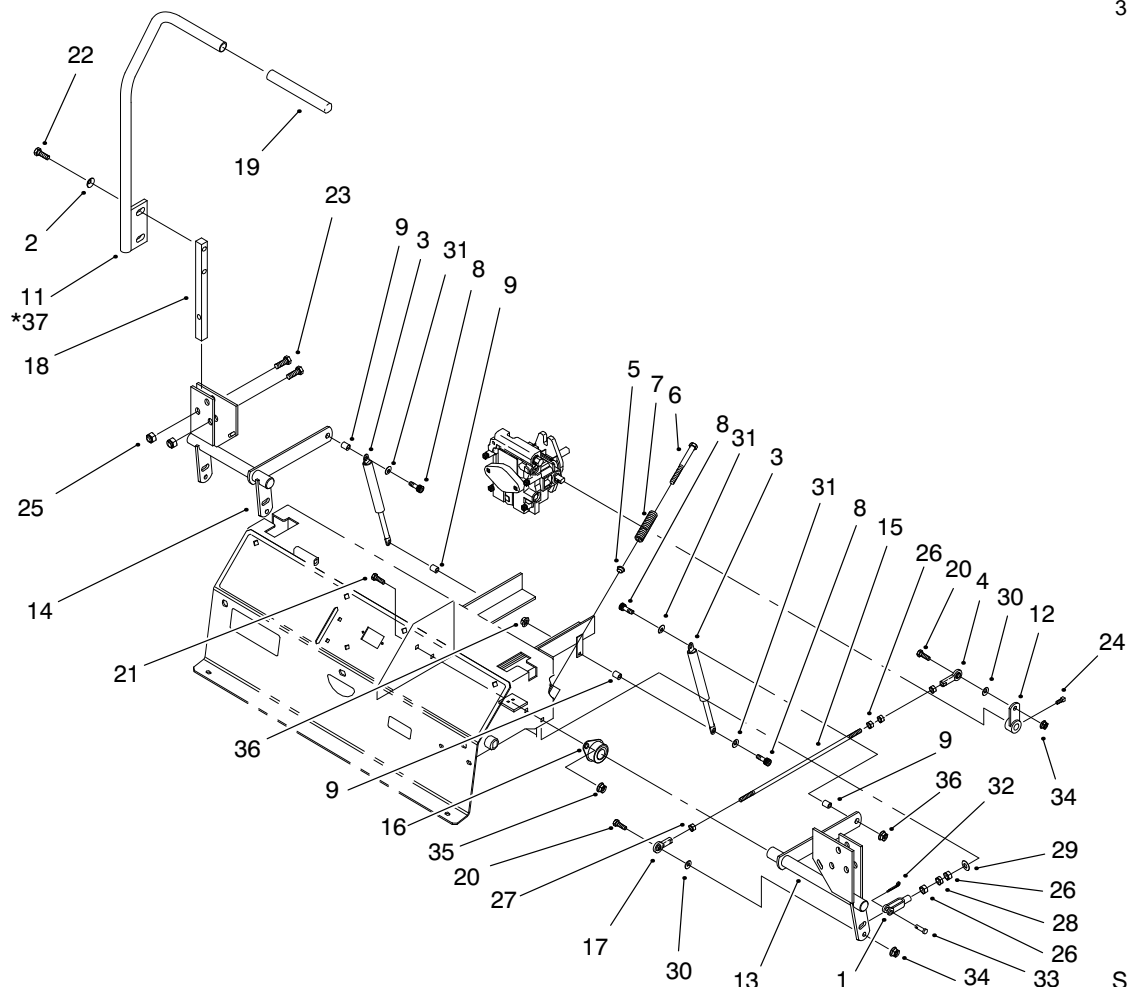
Sheet No.:5

Brake And Wheel Hub Assembly

Ref. No.	Part No.	Qty.	Description
1	E513140	2	Bearing, Control
2	E633454	2	Spring-Brake
3	E633477	3	Rod-Brake
4	E632489	1	Lever-Brakepoint
5	E632217	1	Shaft-Brake
6	E632714	1	Bracket-Brake,LH
9	E633693	2	Brake Band
10	E633380	4	Spacer-Short, Wheel
11	E633382	4	Spacer-Long, Wheel
12	E633102	2	Bearing-Side Flange
13	E633131	4	Yoke-Brake Linkage
14	E633144	2	Pin-Trunion
15	E634927	2	Hub And Drum ASM
15.2	E633926	4	Stud-Wheel
17	E633268	1	Grip-Brake Lever
18	323-4	4	Screw-HH
19	E808285	4	Pin-Clevis
20	325-17	8	Screw-HH
21	302-19	2	Fitting - Grease
22	3217-9	8	Nut-Hex
23	3219-3	8	Nut-Hex
24	3290-357	4	Nut-Lock Flange
25	3253-7	8	Washer-Lock/Sp
26	3256-4	4	Washer-Flat
27	3272-10	7	Pin-Cotter
28	E806800	2	Pin-Cotter

Ref. No.	Part No.	Qty.	Description
29	E808283	2	Pin-Clevis
30	E808514	2	Ring-Retaining
31	3256-28	2	Washer-Flat
32	E523157	2	Spacer
*33	E632715	1	Bracket-Brake, RH

* Not illustrated

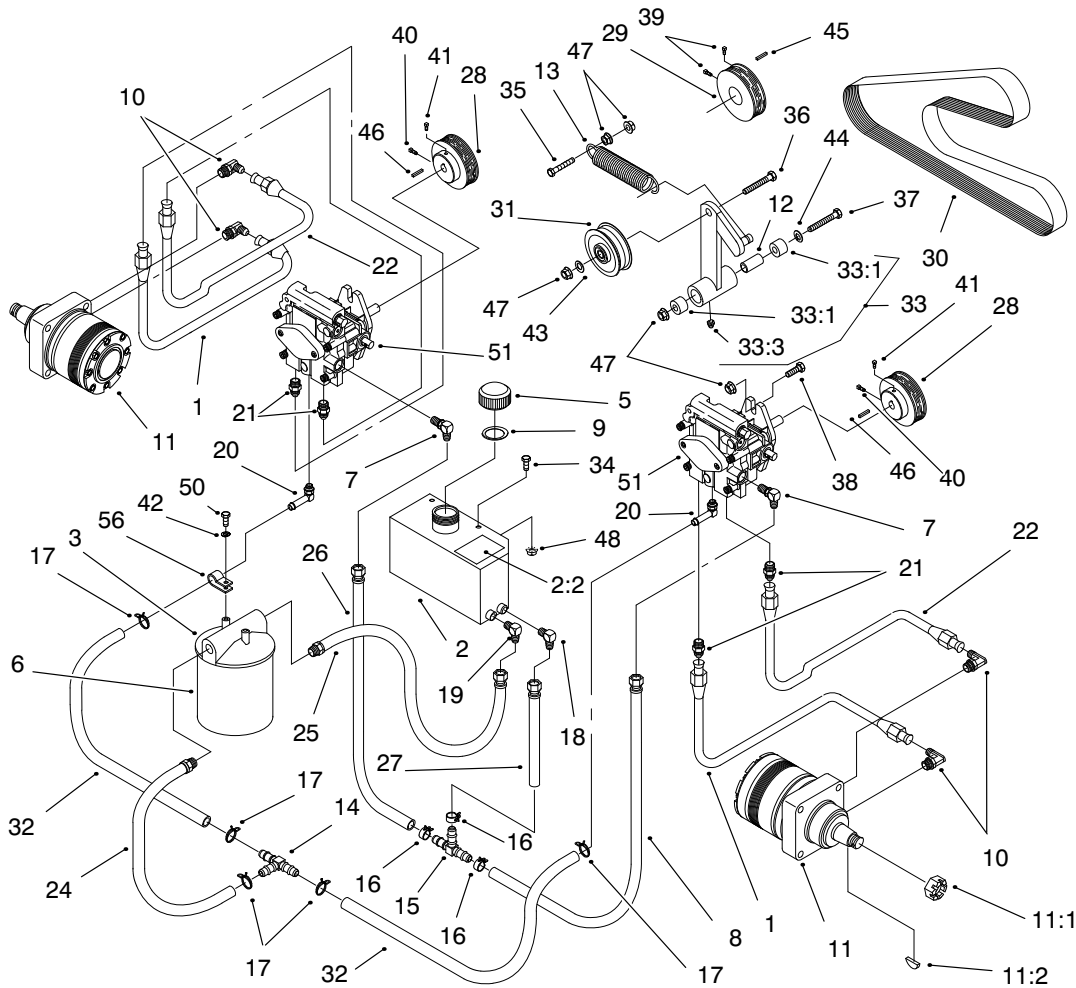


Sheet No.:6

Control Panel Assembly

Ref. No.	Part No.	Qty.	Description	Ref. No.	Part No.	Qty.	Description
1	E303105	2	Yoke-Adjustable	27	3220-20	2	Nut-Jam LH
2	98-5975	4	Washer	28	3220-2	2	Nut-Jam
3	E523027	2	Damper-Control	29	3256-2	2	Washer-Flat
4	E543017	2	Ball Joint	30	3256-3	4	Washer-Flat
5	E603735	2	Bushing-Nylon Flanged	31	3256-23	4	Washer-Flat
6	E603737	2	Bolt-Neutral Return	32	3272-5	2	Pin-Cotter
7	E603807	2	Spring-Neutral Return	33	E808280	2	Pin-Clevis
8	E809057	4	Bolt-Shoulder	34	32128-20	4	Nut-Hex Flange
9	E603903	4	Spacer	35	3290-357	8	Nut-Lock Flange
11	E632193	1	Lever-RH	36	32128-33	4	Nut-Hex Flange
12	E632208	2	Arm-Pump Control	*37	E632191	1	Lever-LH
13	E632911	1	Motion Control				
14	E632912	1	Motion Control				
15	E633153	2	Linkage				
16	E633102	4	Bearing-Side Flange				
17	E633152	2	Ball Joint-LH Thread				
18	E633177	2	Arm				
19	E633257	2	Grip-Motion Control				
20	322-6	4	Screw-HH				
21	323-4	8	Screw-HH				
22	323-6	4	Screw-HH				
23	323-9	6	Screw-HH				
24	E803022	2	Screw				
25	32146-2	6	Nut-Lock Ni				
26	3219-2	10	Nut-Hex				

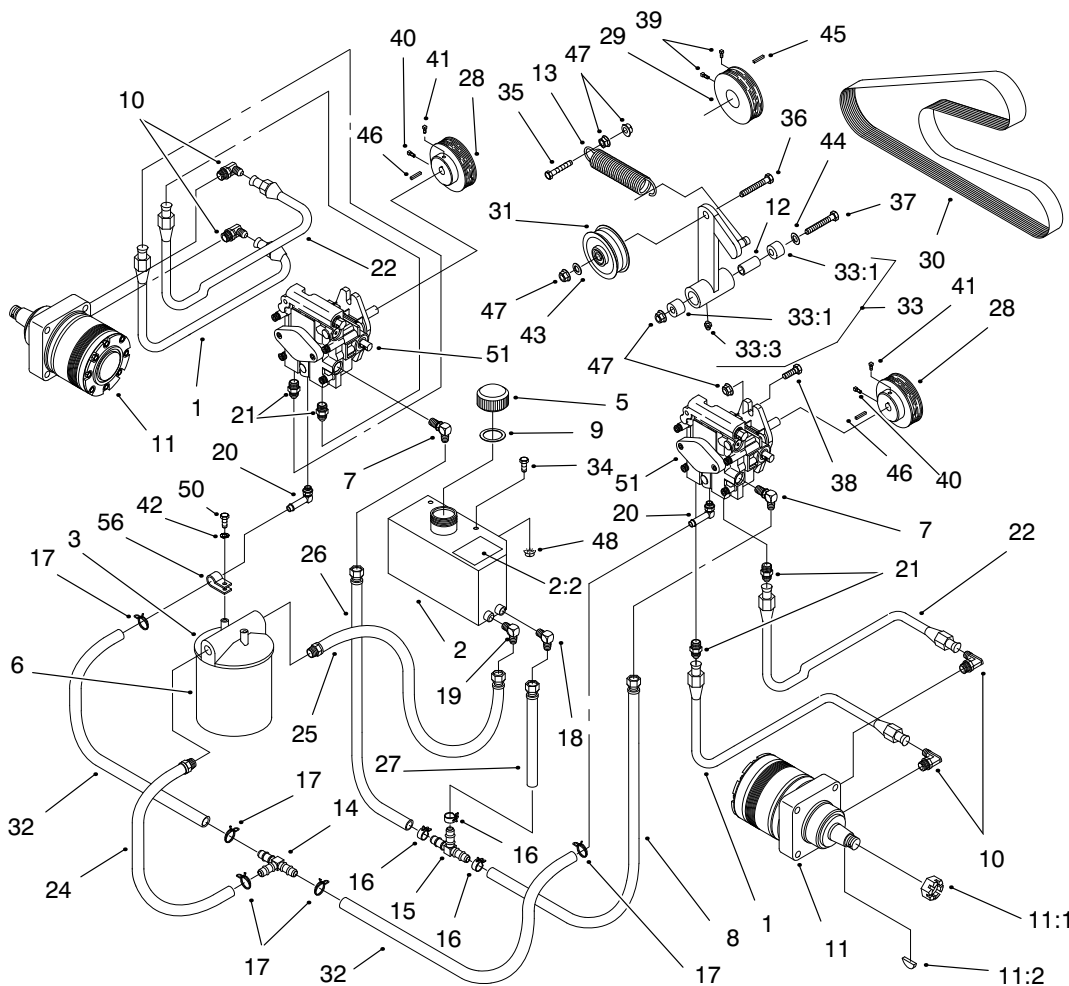
* Not illustrated



Hydraulic System Assembly

Ref. No.	Part No.	Qty.	Description
1	E633774	2	Hose-High Pressure
2	99-4625	1	Hydraulic Tank ASM
2:2	E523552	1	Decal - Hydraulic Tank, Hot Surface
3	E513006	1	Filter-Head
5	E513167	1	Cap-Hydraulic Reservoir
6	E633750	1	Filter-Hydro
6	E633752	1	Filter-Hydro, Winter
7	E513840	2	Elbow-90
8	E522217	1	Low Pressure Hose ASM
9	E523103	1	Gasket-Tank/Cap
10	E633786	4	Elbow 90°
11	E523328	2	Motor-Wheel
11:1	E809036	1	Nut-Castle
11:2	E807020	1	Woodruff-Key
12	E603384	1	Bushing-Idler Pivot
13	E603413	1	Spring-Extension
14	E603721	1	Fitting
15	E603722	1	Fitting
16	E603826	3	Clamp-Hose
17	E603827	5	Clamp-Hose
18	E603987	1	Elbow
19	E603988	1	Elbow
20	E603989	2	Elbow

Ref. No.	Part No.	Qty.	Description
21	E603990	4	Adapter
22	E633775	2	Hose-High Pressure
24	E632281	1	12" Low Pressure Hose ASM
25	E632282	1	13" Low Pressure Hose ASM
26	E632285	1	Hose-Low Pressure
27	E632286	1	Hose-Low Pressure
28	E633568	2	Sheave
29	E633567	1	Sheave
30	E633749	1	Belt
31	E633167	1	Pulley-Idler
32	E633335	2	Hose-Low Pressure
33	E634277	1	Arm ASM
33:1	E513034	2	Bearing-Pivot
33:3	E811008	1	Fitting-Grease
34	321-4	2	Screw-HH
35	323-8	1	Screw-HH
36	323-9	1	Screw-HH
37	E800805	1	Screw-HH
38	323-7	4	Screw-HH
39	E803022	2	Screw
40	3242-6	2	Screw-SQH
41	3242-4	2	Screw-SQH
42	3253-3	2	Washer-Lock/Sp
43	3256-3	1	Washer-Flat

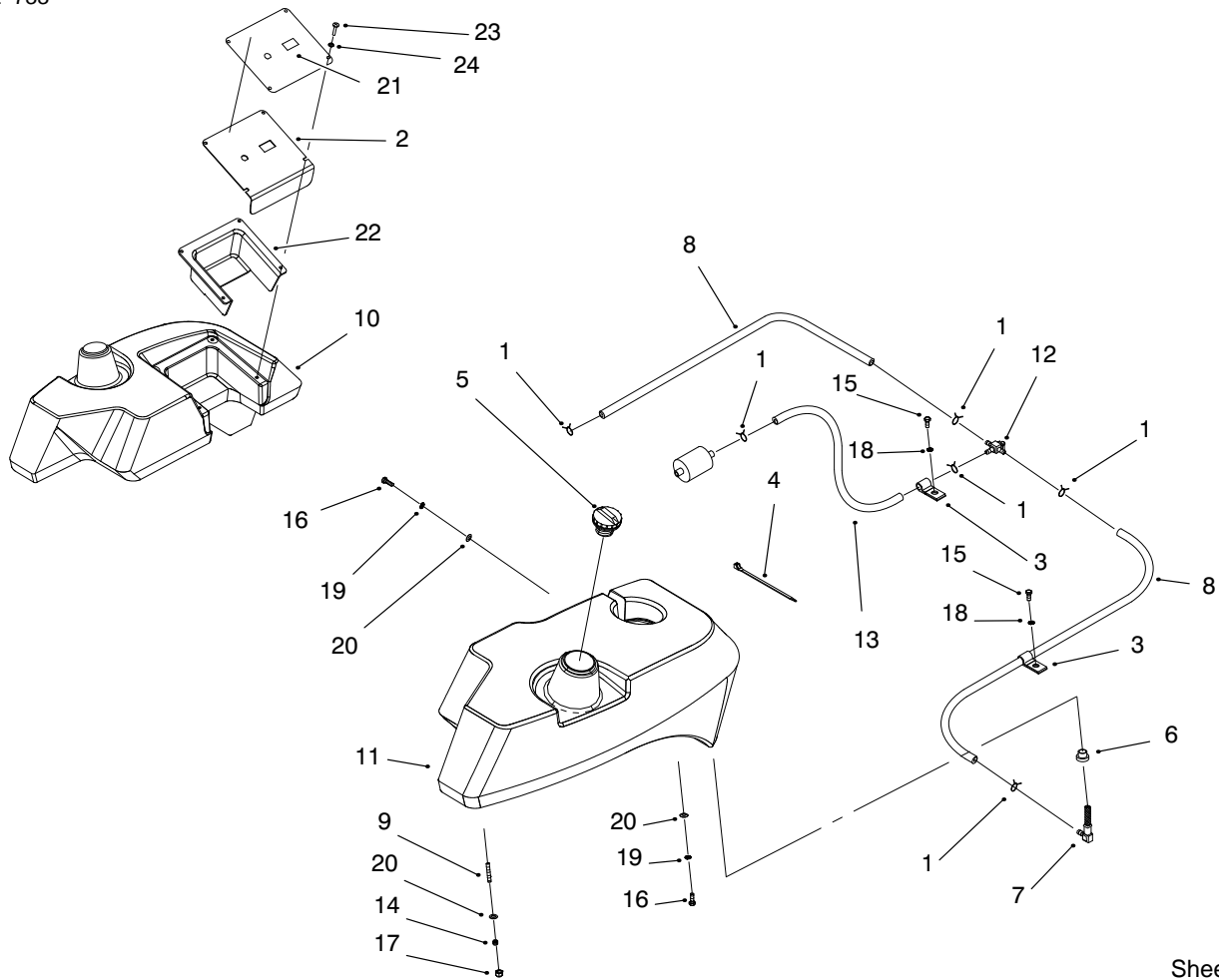


Sheet No.:7

Hydraulic System Assembly (Continued)

Ref. No.	Part No.	Qty.	Description	Ref. No.	Part No.	Qty.	Description
44	3256-4	1	Washer-Flat				
45	13-2840	1	Square Key				
46	E807272	2	Key				
47	3290-357	8	Nut-Lock Flange				
48	32128-33	2	Nut-Hex Flange				
50	321-3	2	Screw-HH				
51	E603841	2	Pump-Hydro				
56	E513762	1	Clip				

PROTOTYPE

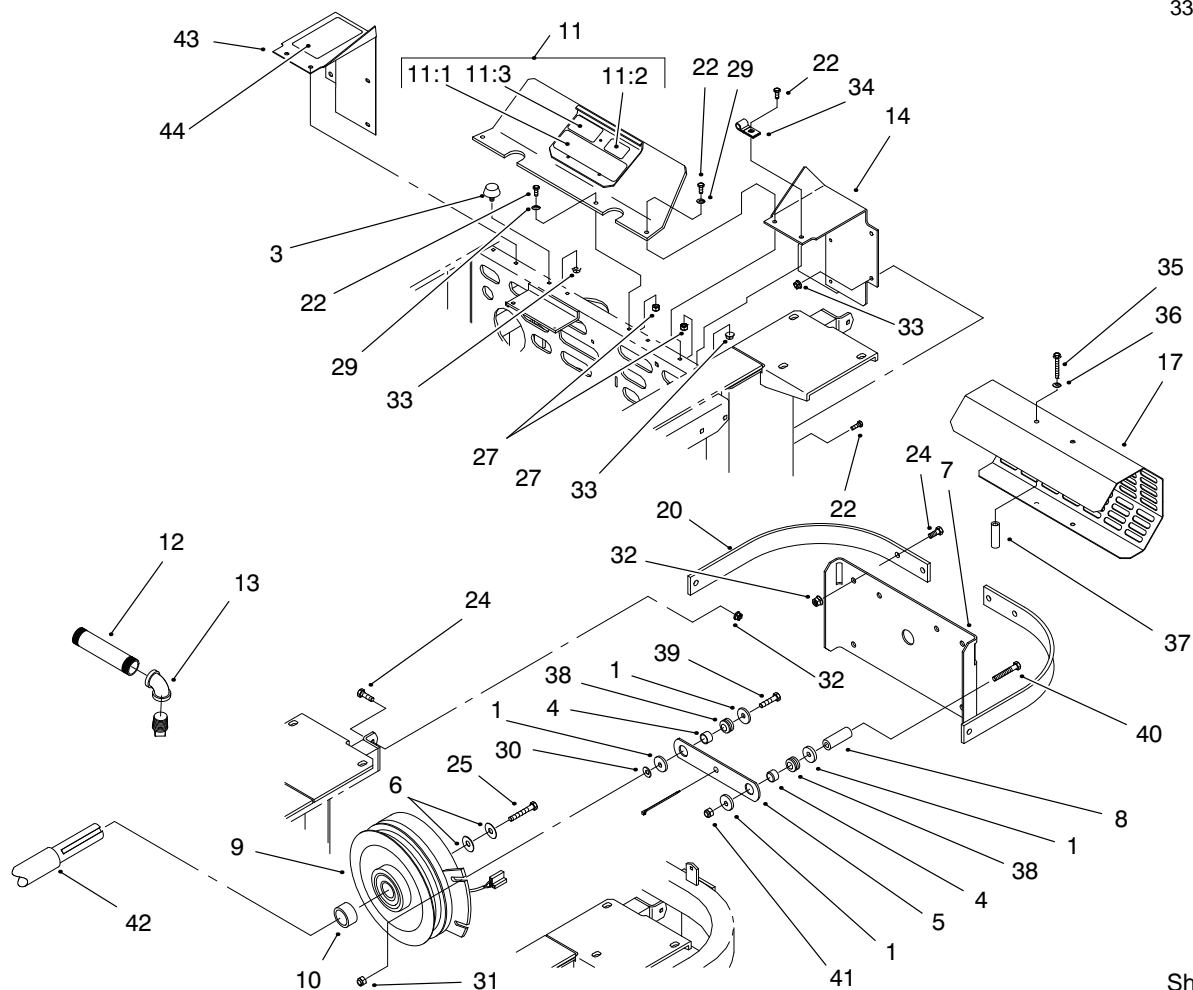


Sheet No.:8

Tank And Fuel Lines Assembly

Ref. No.	Part No.	Qty.	Description
1	E303077	6	Clamp – Gas Line
2	99-4656	1	Panel-Control
3	E513762	2	Clip
4	E303335	1	Tie-Plastic
5	93-3101	2	Cap-Fuel
6	E513645	2	Bushing-Valve, Fuel
7	E543277	2	Elbow-Fuel Tank
8	E543456	2	Fuel Line – 21.5
9	E633023	6	Stud
10	99-4608	1	Tank – LH Fuel
11	99-4607	1	Tank – RH Fuel
12	E633347	1	Valve-Fuel-Line
13	E633348	1	Fuel Line
14	E633349	6	Spring-Fuel Tank
15	321-3	2	Screw-HH
16	322-3	4	Screw-HH
17	3296-41	6	Nut-Lock Ni
18	3253-3	2	Washer-Lock/Sp
19	3253-4	4	Washer-Lock/Sp
20	3256-23	10	Washer-Flat
21	99-4632	1	Decal-Control Panel
22	99-4940	1	Shield-Control Panel
23	E803071	4	Screw
24	E303435	4	Washer-Belleview

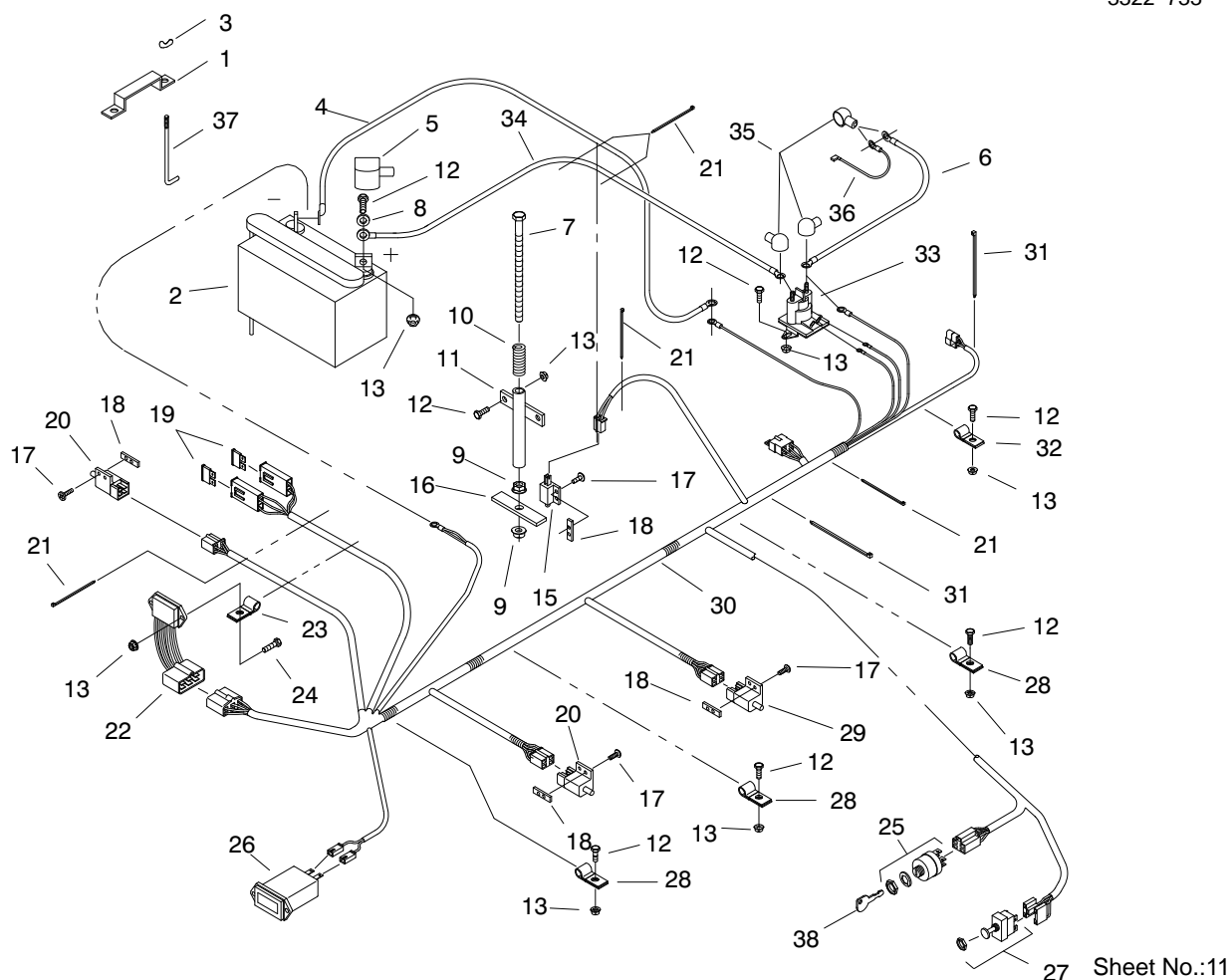
Ref. No.	Part No.	Qty.	Description
PROTOTYPE			



Sheet No.:9

Shields And Clutch Assembly

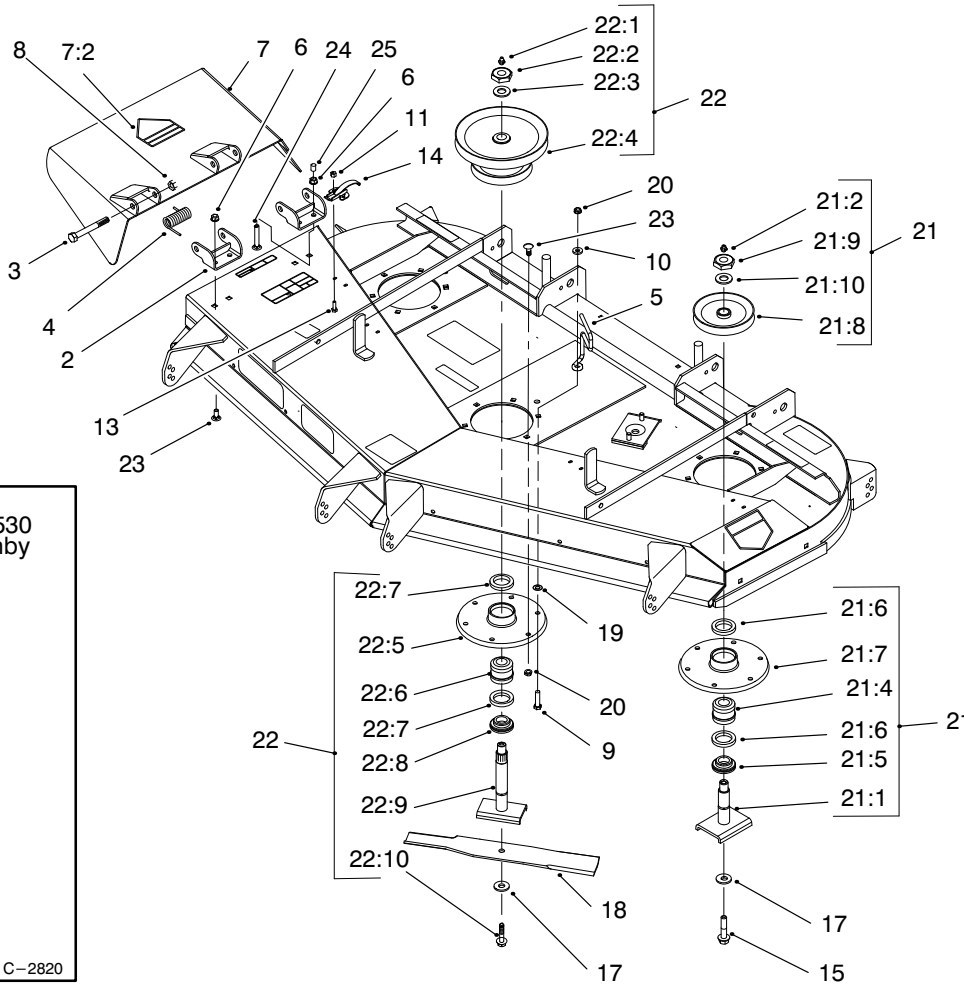
Ref. No.	Part No.	Qty.	Description	Ref. No.	Part No.	Qty.	Description
1	E613235	4	Washer	32	3290-357	4	Nut-Lock Flange
3	E523420	2	Bumper	33	32128-33	7	Nut-Hex Flange
4	E633545	2	Spacer-Grommet	34	E633396	1	Clip - Loom
5	E633543	1	Strap-Clutch/Brake	35	E809076	2	Screw-HH
6	E603610	2	Washer - Spring, Disc	36	E323235	2	Washer Spring, Disc
7	E633615	1	Guard-Clutch	37	E323236	2	Spacer
8	E633988	1	Spacer-Clutch, Anchor	38	E633630	2	Grommet
9	E631731	1	Clutch-Magstop 125	39	322-6	1	Screw-HH
10	E633453	1	Spacer-Clutch	40	322-19	1	Screw-HH
11	E644276	1	Shield ASM	41	3296-41	1	Nut-Lock Ni
11:1	E643252	1	Decal - Drive, Belt	42	E643026	1	Kohler Command Ch22
11:2	E513748	1	Decal-Guard	43	E634797	1	Shield-RH
11:3	E633462	1	Decal-Important	44	E633771	1	Decal - Belt, Pump
12	E543232	1	Nipple				
13	E303428	1	Elbow				
14	E634796	1	Shield-LH				
17	E633466	1	Guard-Muffler				
20	E643264	2	Bracket-Guard, Top				
22	321-4	10	Screw-HH				
24	323-6	6	Screw-HH				
25	3212-10	1	Screw-HH				
27	32146-17	4	Nut-Lock				
29	3256-2	4	Washer-Flat				
30	3256-3	1	Washer-Flat				
31	32128-20	1	Nut-Hex Flange				



27 Sheet No.:11

Electrical System Assembly

Ref. No.	Part No.	Qty.	Description	Ref. No.	Part No.	Qty.	Description
1	E633652	1	Strap-Battery Hold Down	25	E543070	1	Switch-Ignition
2	E603479	1	Battery-12v	26	E513374	1	Meter-Engine Hours
3	E543792	2	Wingnut-Nyloc	27	E633673	1	Switch-PTO
4	E633307	1	Wire-Ground	28	E633396	3	Clip - Loom
5	E543391	1	Insulator-Battery	29	E633110	1	Switch-Brake
6	E633306	1	Wire-Starter	30	E643119	1	Harness-Wiring
7	E800282	1	Screw-HH	31	E303335	4	Tie-Plastic
8	3256-2	2	Washer-Flat	32	E323229	1	Clip-Loom
9	32128-20	2	Nut-Hex Flange	33	E513075	1	Switch-12v Solenoid
10	E523415	1	Spring-Switch, Seat	34	E523281	1	Cable-Battery
11	E522424	1	Spring-Mount	35	E543393	3	Insulator-Solenoid
12	321-4	8	Screw-HH	36	E543084	1	Wire-Starter Solonoid
13	32128-33	11	Nut-Hex Flange	37	E633651	2	Bolt-Battery Hold Down
15	E513152	1	Switch-Seat	38	63-8360	2	Key-Ignition w/Shield
16	E513180	1	Actuator - Switch, Seat				
17	E803028	8	Screw				
18	E633181	4	Plate-Tapped				
19	E816001	2	Fuse-Blade Type 20 Amp				
20	E633111	2	Switch-Drive Lever				
21	E303287	5	Tie-Plastic				
22	E543316	1	Module-Safety				
23	E513762	1	Clip				
24	321-6	1	Screw-HH				



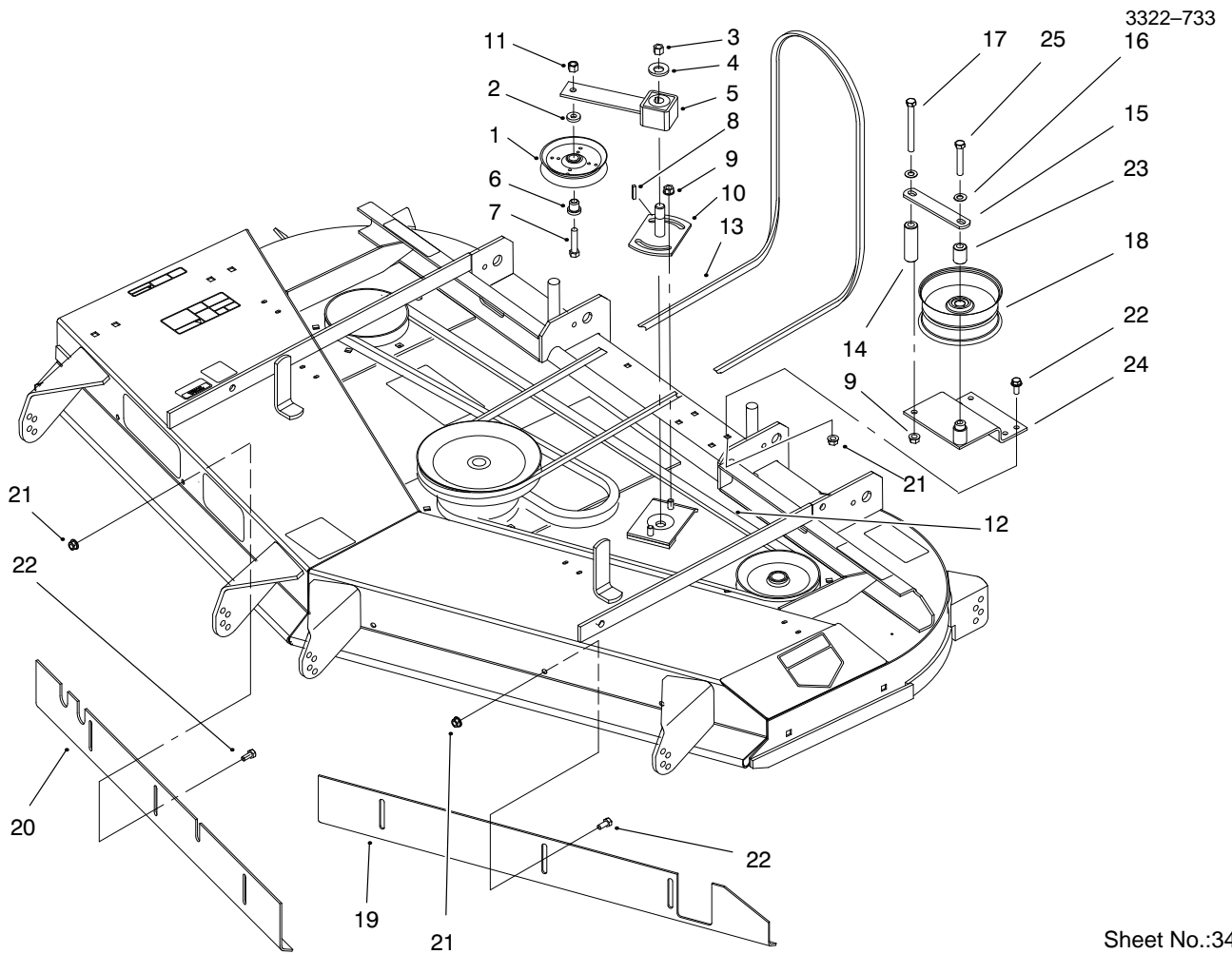
Sheet No.:33

Spindle And Pulley Assembly

Ref. No.	Part No.	Qty.	Description
2	51-1530-01	2	Bracket-Hinge
3	325-17	2	Screw-HH
4	51-1550	2	Spring
5	99-8933	1	Belt-Guide
6	3290-357	4	Nut-Lock Flange
7	14-0909	1	Deflector ASM
7:2	54-9220	1	Decal-Danger
8	32153-5	2	Nut-Lock
9	323-8	1	Screw-HH
10	3256-3	1	Washer-Flat
11	32128-17	8	Nut-Flange Lock
13	3290-321	8	Screw-HWH
14	249-21	4	Clamp-Slotted
15	92-5816	2	Flangebolt-Blade
17	E513435	3	Washer-Spring
18	44-6250	3	Blade 21.5
19	3256-24	1	Washer-Flat
20	32128-21	18	Nut-Hex Flange
21	99-4640	2	Spindle Housing ASM
21:1	27-0920	1	Shaft-Spindle
21:2	302-2	1	Fitting-Grease
21:4	46-8530	1	Bearing ASM
*21:4:1	27-0960	1	Bearing ASM
*21:4:2	27-5970	1	Spacer-Matched Set
21:5	27-0950	1	Spacer-Bearing, Spindle

Ref. No.	Part No.	Qty.	Description
21:6	253-139	2	Seal-Oil
21:7	61-4160	1	Spindle
21:8	99-4614	1	Pulley & Hub
21:9	32146-20	1	Nut-Jam
21:10	7-4150	1	Washer-Pinion
22	99-4944	1	Spindle Housing ASM
22:1	302-2	1	Fitting-Grease
22:2	32146-20	1	Nut-Jam
22:3	92-5836	1	Washer - Axle
22:4	99-4939-03	1	Pulley & Hub ASM
22:5	61-4160	1	Spindle
22:6	46-8530	1	Bearing ASM
*22:6:1	27-0960	1	Bearing ASM
*22:6:2	27-5970	1	Spacer-Matched Set
22:7	253-139	2	Seal-Oil
22:8	27-0950	1	Spacer-Bearing, Spindle
22:9	51-3551	1	Shaft-Spindle
22:10	92-5816	1	Flangebolt-Blade
23	3231-22	20	Screw-CARR
24	3231-33	1	Screw-CARR
25	105316	1	Cap-Plunger Rod

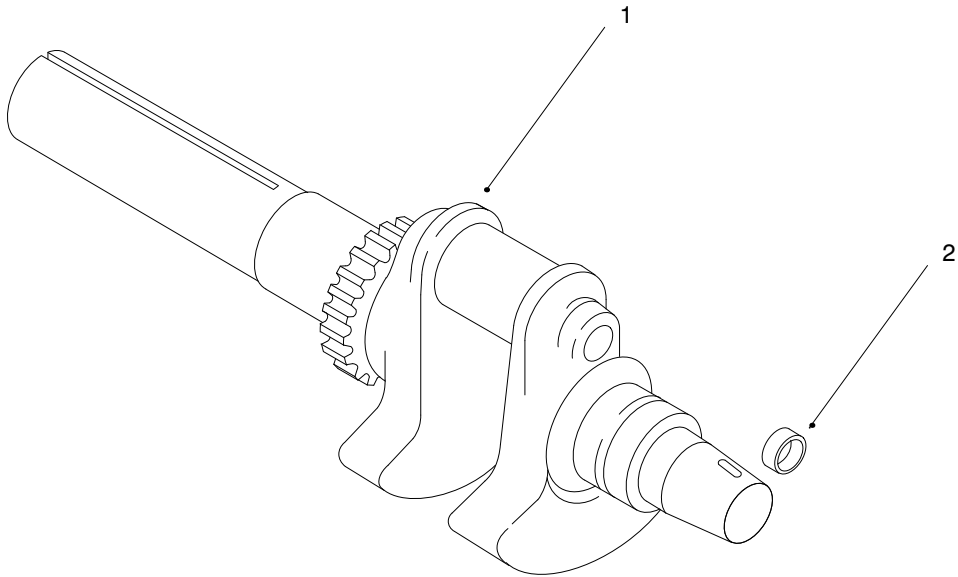
* Not illustrated



Sheet No.:34

Belts And Idler Arm Assembly

Ref. No.	Part No.	Qty.	Description	Ref. No.	Part No.	Qty.	Description
1	65-5940	1	Idler Pulley				
2	7-0081	1	Washer - Flat				
3	3296-71	1	Nut-Lock Ni				
4	3256-27	1	Washer-Flat				
5	27-8580	1	Idler Socket & Bushing ASM				
6	65-5950	1	Bushing-Pulley				
7	3211-8	1	Screw-HH				
8	5-1077	1	Square Key				
9	3290-357	3	Nut-Lock Flange				
10	44-6301	1	Plate-Idler, LH				
11	3296-5	1	Nut-Lock Ni				
12	44-6260	1	V Belt				
13	99-4647	1	V Belt-Deck Drive				
14	99-4659	1	Spacer-Bracket				
15	E653189	1	Plate-Guide, Belt				
16	E303327	2	Washer-Disc Spring				
17	323-42	1	Screw-HH				
18	E413099	1	Pulley-Idler				
19	99-2833-03	1	Front Baffle-LH				
20	99-2834-03	1	Front Baffle-RH				
21	32128-20	10	Nut-Hex Flange				
22	3234-5	10	Screw-HHF				
23	E653190	1	Spacer				
24	99-4684	1	Bracket-Pulley				
25	323-11	1	Screw-HH				



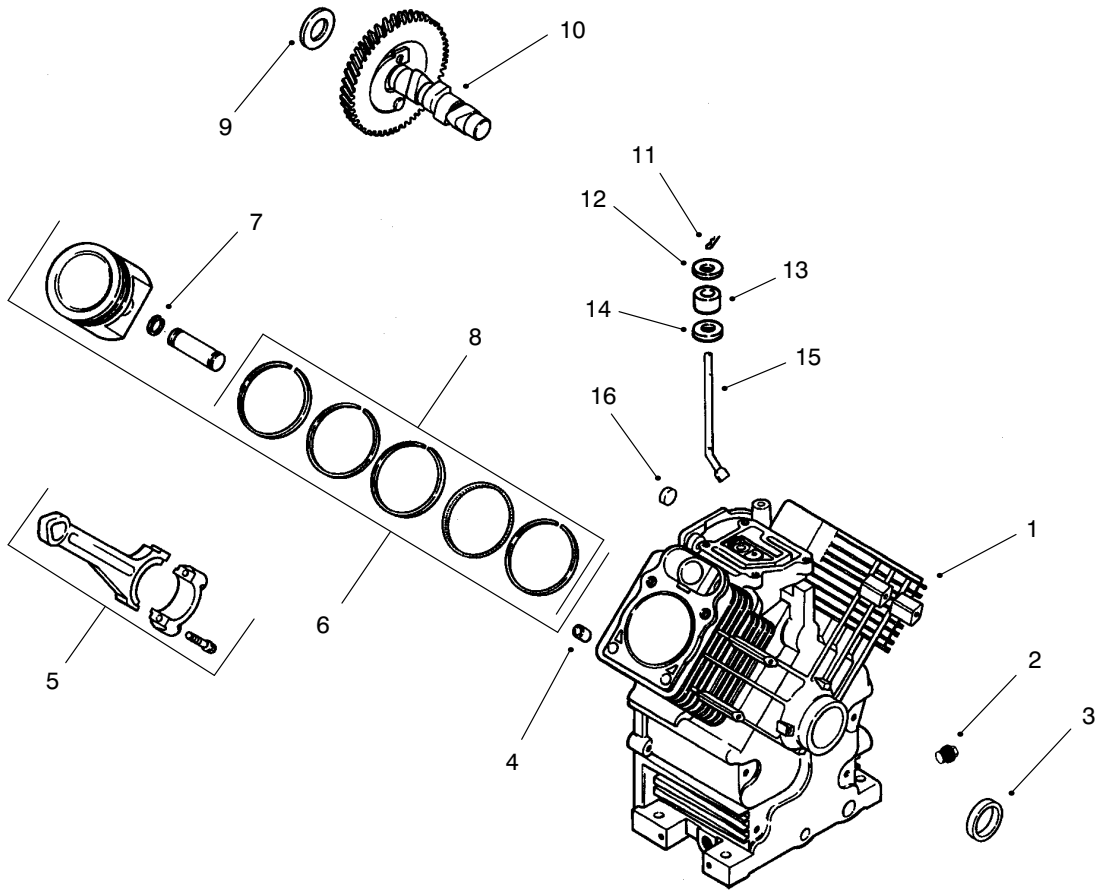
Group 1 – Crankshaft (CH22S 76513 Kohler)

Ref. No.	Part No.	Description	No. Used
1	24 014 84	Crankshaft	1
2	52 139 09	Plug, cup	1

Ref. No.	Part No.	Description	No. Used

PROTOTYPE

Obtain Parts From Kohler

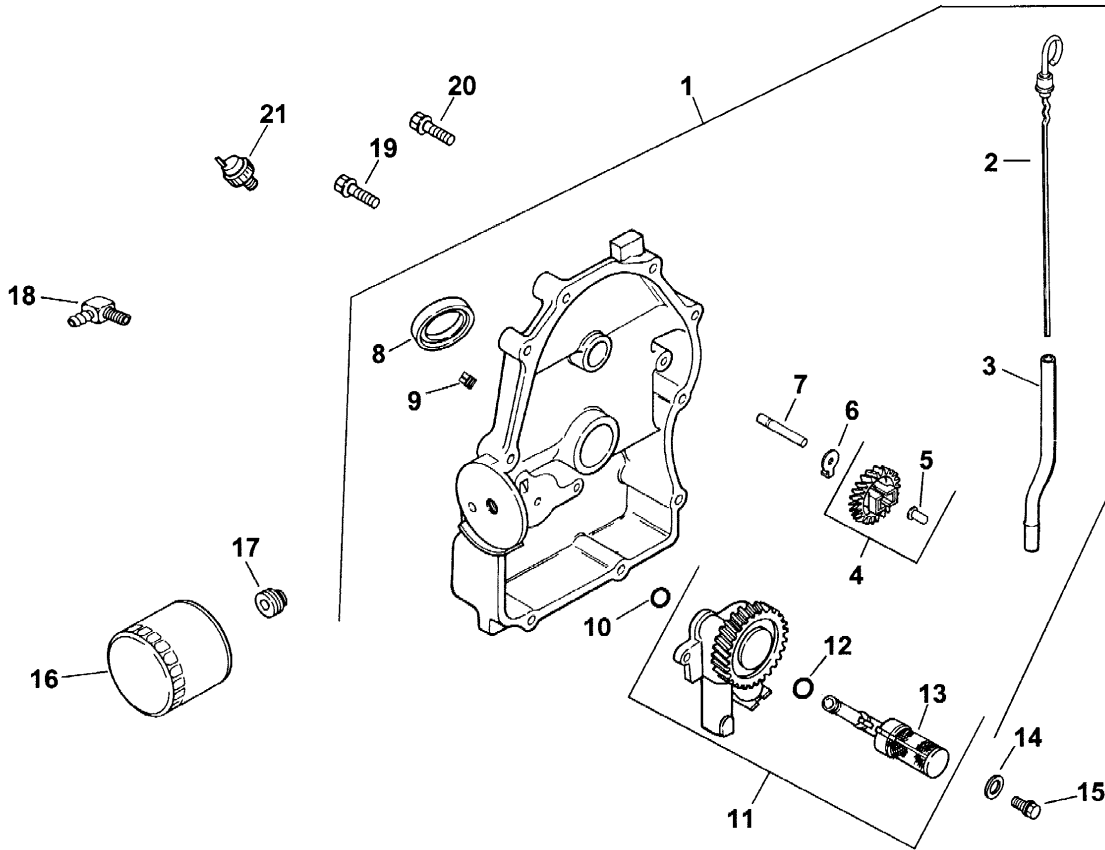


Group 2 – Crankcase (CH22S 76513 Kohler)

Ref. No.	Part No.	Description	No. Used
1		Crankcase	
2	X-75-10	Plug, pipe	2
3	24 032 01	Seal, oil front	1
4	12 380 17	Pin, dowel locating	6
5	24 067 13	Connecting Rod (Std.)	2
	24 067 14	Connecting Rod (.25)	2
6	24 874 09	Piston w/Ring Set (Std.)	2
	24 874 10	Piston w/Ring Set (.25)	2
	24 874 11	Piston w/Ring Set (.50)	2
7	24 018 01	Retainer, piston pin	4
8	24 108 08	Ring Set (Std.)	2
	24 108 09	Ring Set (.25)	2
	24 108 10	Ring Set (.50)	2
9	12 422 09	Shim, camshaft – red	A/R

Ref. No.	Part No.	Description	No. Used
	12 422 13	Shim, camshaft – black	A/R
	12 422 07	Shim, camshaft – white	A/R
	12 422 08	Shim, camshaft – blue	A/R
	12 422 10	Shim, camshaft – yellow	A/R
	12 422 11	Shim, camshaft – green	A/R
	12 422 12	Shim, camshaft – gray	A/R
10	24 012 10	Camshaft	1
	11 12 380 04	Pin, hitch	1
	12 M-0631005	Washer, flat	1
	13 12 032 01	Seal, governor cross shaft	1
	14 X-25-102	Washer, plain	1
	15 24 144 01	Shaft, governor cross	1
	16 52 139 09	Plug, cup	1

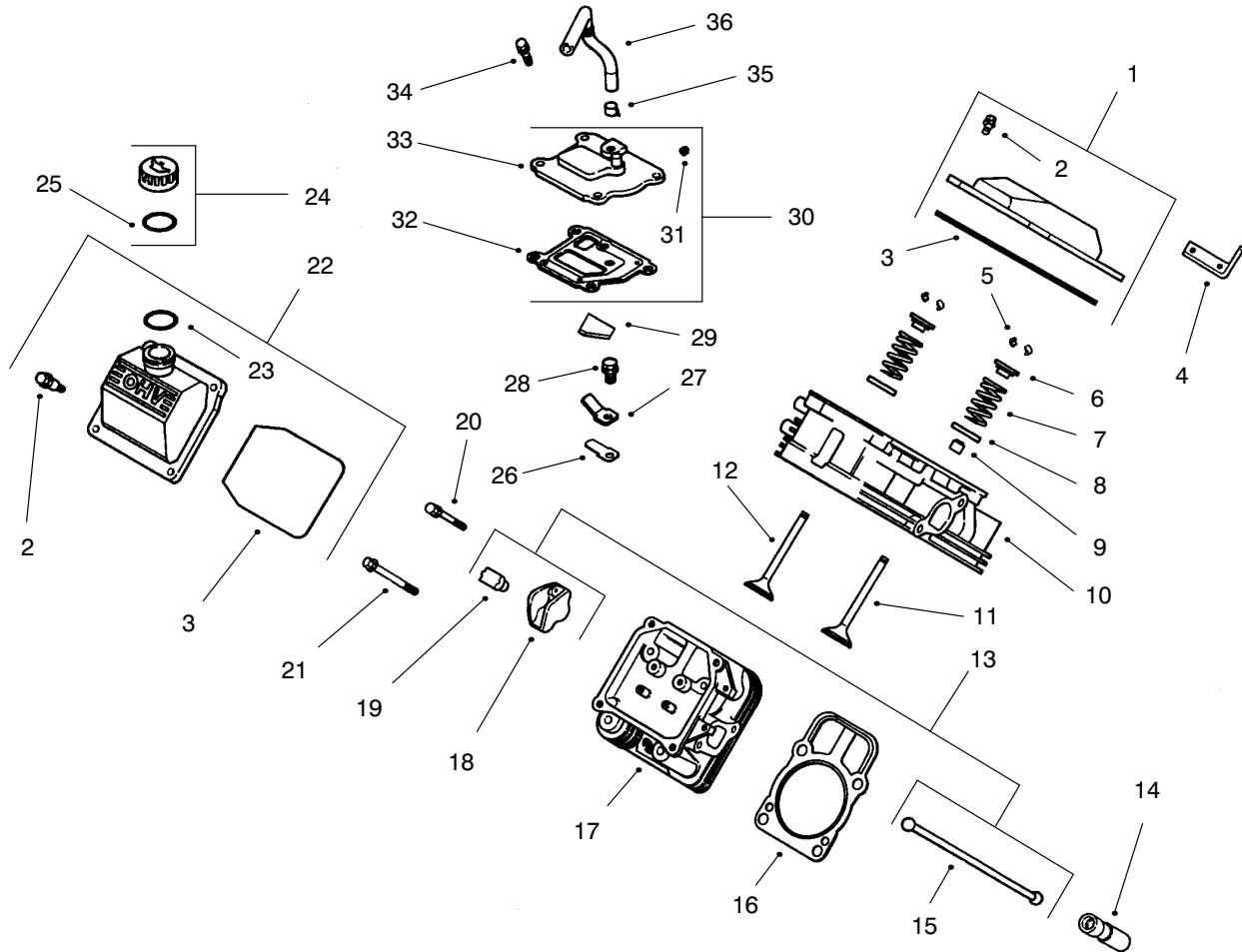
Obtain Parts From Kohler



Group 3 – Oil Pan/Lubrication (CH22S 76513 Kohler)

Ref. No.	Part No.	Description	No. Used	Ref. No.	Part No.	Description	No. Used
1	24 009 83	Plate, closure assembly (Includes 2-12)	1	11	24 393 10	Oil pump assembly (Includes 12,13)	1
2	24 038 06	Dipstick	1	12	24 153 01	O-Ring, oil pick-up	1
3	24 123 08	Tube, dipstick	1	13	24 381 04	Pick-up, oil	1
4	24 043 12	Kit, governor gear (Includes 5)	1	14	M-0631005	Washer, plain 6 mm	2
5	12 380 01	Pin, governor regulating	1	15	M-0645025	Screw, hex flange	2
6	52 448 02	Tab, locking	1	16	52 050 02	Filter, oil	1
7	12 144 02	Shaft, governor gear	1	17	24 136 01	Nipple, oil filter	1
8	52 032 08	Seal, oil (PTO end)	1	18	25 155 02	Connector	1
9	X-75-23	Plug, pipe 1/8"	2	19	24 086 16	Screw, hex flange	9
10	24 153 08	O-Ring	1	20	24 086 17	Screw, hex flange	1
				21	24 099 03	Switch, pressure	1

Obtain Parts From Kohler

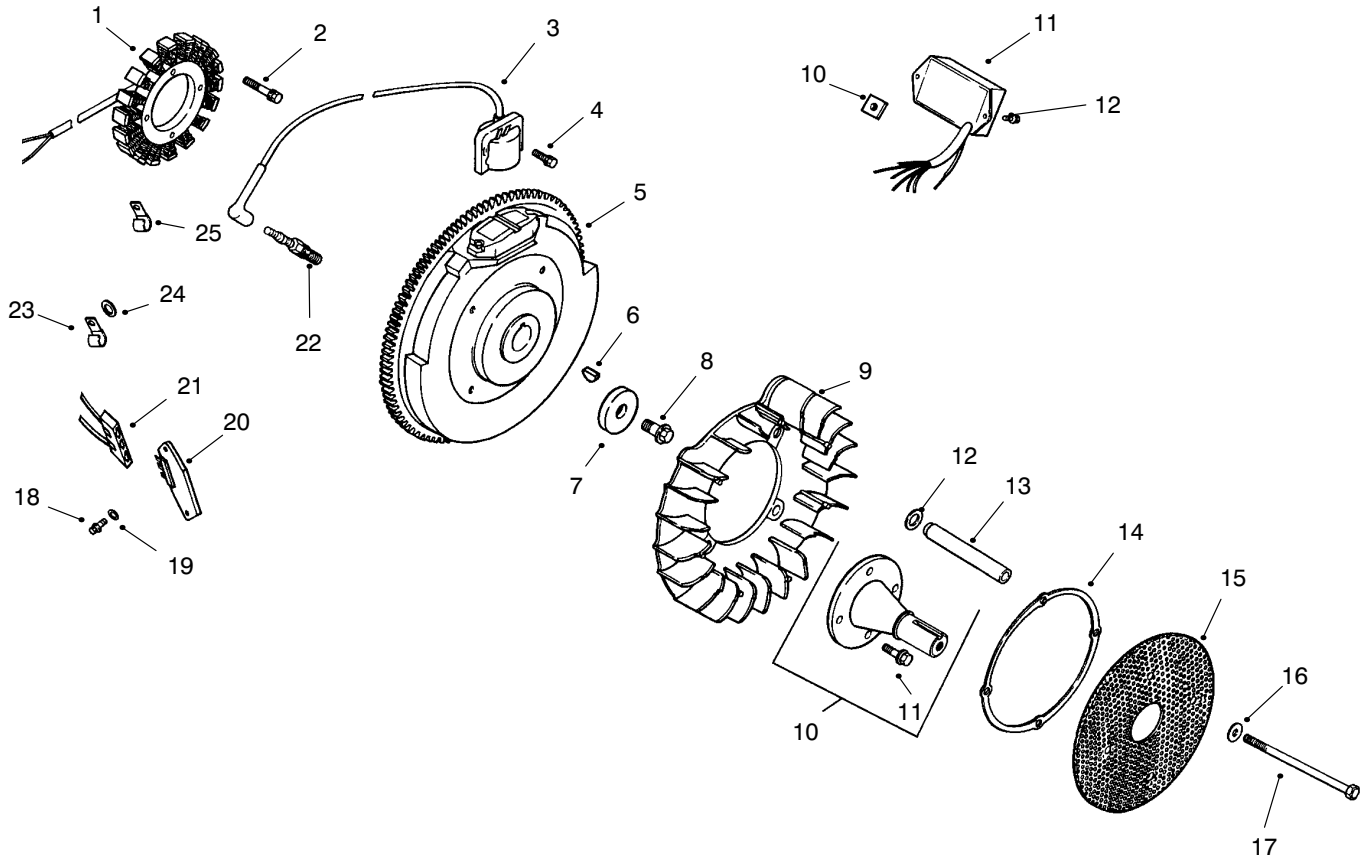


Group 4 – Head/Valve/Breather (CH22S 76513 Kohler)

Ref. No.	Part No.	Description	No. Used
1	24 755 74	Kit, valve cover – plain (Includes 2–3)	1
2	24 086 32	Screw, shoulder	4
3	24 153 16	O–Ring, valve cover	1
4	24 445 01	Strap, lifting	1
5	12 755 03	Kit, retainer	4
6	12 173 01	Cap, valve spring	4
7	24 089 02	Spring, valve	4
8	235011	Retainer, spring	4
9	24 032 05	Seal, valve stem	2
10	24 318 13	Head assembly, #1 cylinder	1
11	24 017 01	Valve, intake (Std.)	2
	24 017 02	Valve, intake (.25)	2
12	24 016 01	Valve, exhaust (Std.)	2
	24 016 02	Valve, exhaust (.25)	2
13	24 755 66	Kit, valve train (Includes 15,18,19)	1
14	12 351 02	Lifter, valve	4
15	24 411 05	Rod, push	4
16	24 041 40	Gasket, cylinder head	2
17	24 318 10	Head assembly, #2 cylinder	1

Ref. No.	Part No.	Description	No. Used
18	25 186 01	Arm, rocker	4
19	24 599 01	Pivot, rocker arm	4
20	M-0640034	Screw, hex. flange	4
21	24 086 44	Screw, hex. flange	8
22	24 755 75	Kit, valve cover – oil fill (Includes 2,3,23)	1
23	24 153 09	O–Ring	1
24	24 755 46	Kit, oil fill cap (Includes 25)	1
25	12 153 03	O–Ring, oil fill cap	1
26	24 402 03	Reed, breather	1
27	12 018 01	Retainer, breather reed	1
28	M-0545010	Screw, hex. flange	1
29	24 050 01	Filter, breather	1
30	24 033 01	Kit, breather (Includes 31–33)	1
31	X-75-23	Plug, allen head pipe	1
32	24 041 23	Gasket, breather	1
33	24 096 02	Cover, breather	1
34	M-0645020	Screw, hex. flange	4
35	X-426-9	Clamp, breather	1
36	24 326 06	Hose, breather	1

Obtain Parts From Kohler

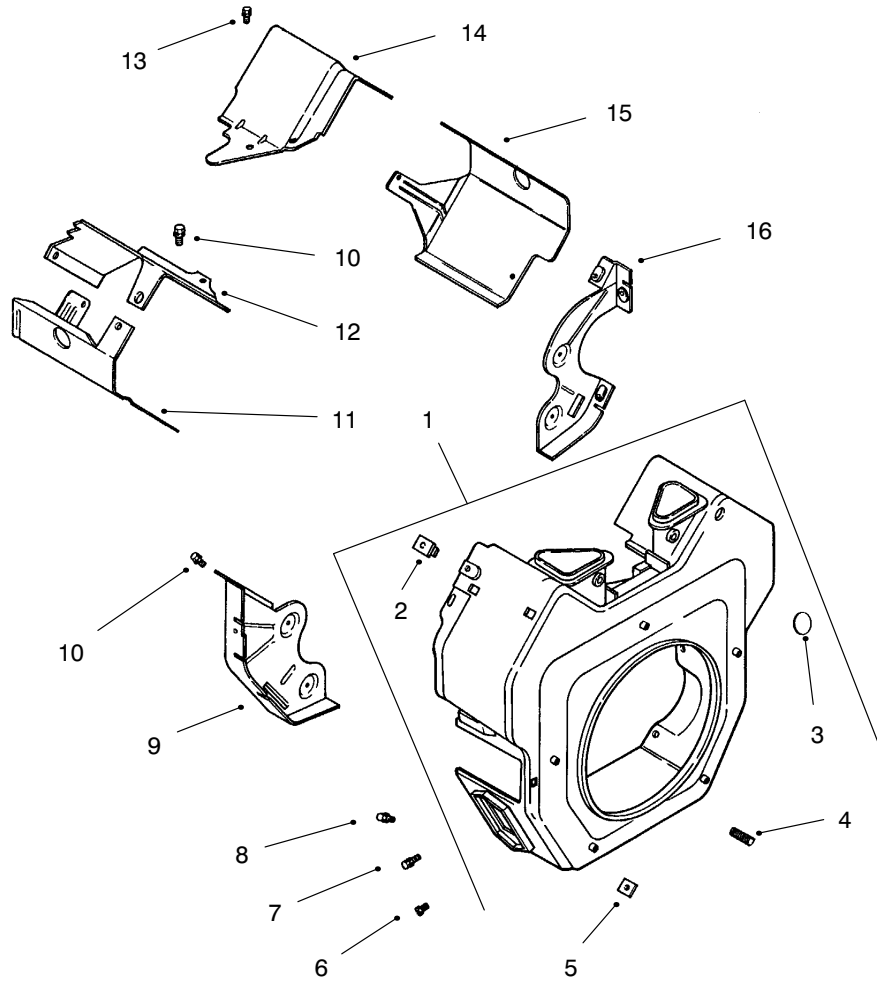


Group 5 – Ignition/Electrical (CH22S 76513 Kohler)

Ref. No.	Part No.	Description	No. Used
1	54 755 09	Kit, 15 amp stator (Incl. 24 126 71 bracket)	1
2	M-0548025	Screw, hex. cap	2
3	24 584 01	Module, ignition	2
4	M-0545020	Screw, hex. socket hd.	4
5	24 025 11	Flywheel	1
6	X-42-15	Key	1
7	12 468 03	Washer, plain 3/8"	1
8	12 086 14	Screw, hex flange	1
9	24 157 03	Fan	1
10	24 755 08	Kit, front drive shaft (Includes 14)	1
11	M-0839025	Screw, hex flange	4
12	24 468 11	Washer, spring 10mm	4
13	24 112 14	Spacer	4
14	24 141 06	Ring, support	1
15	24 162 22	Screen, grass	1
16	X-25-53	Washer, plain 1/4"	4

Ref. No.	Part No.	Description	No. Used
17	M-0603100	Screw, hex	4
18	24 086 18	Screw, phillips hd.	2
19	X-25-92	Washer, plain 3/16	2
20	25 403 03	Rectifier-regulator 15 amp	1
21	236602	Connector	1
22	12 132 06	Spark Plug	2
23	48 154 02	Clip, cable	1
24	X-25-63	Washer, plain 1/4"	1
25	235173	Clip, cable	1
	25 518 28	Not Illustrated Lead, black, (4" - 18 gauge - insulated grip barrel eyelet terminals)	1
	24 176 07	Harness, wiring	1
	24 126 71	Bracket, stator wire	1
	X-22-11	Washer, lock	1

Obtain Parts From Kohler

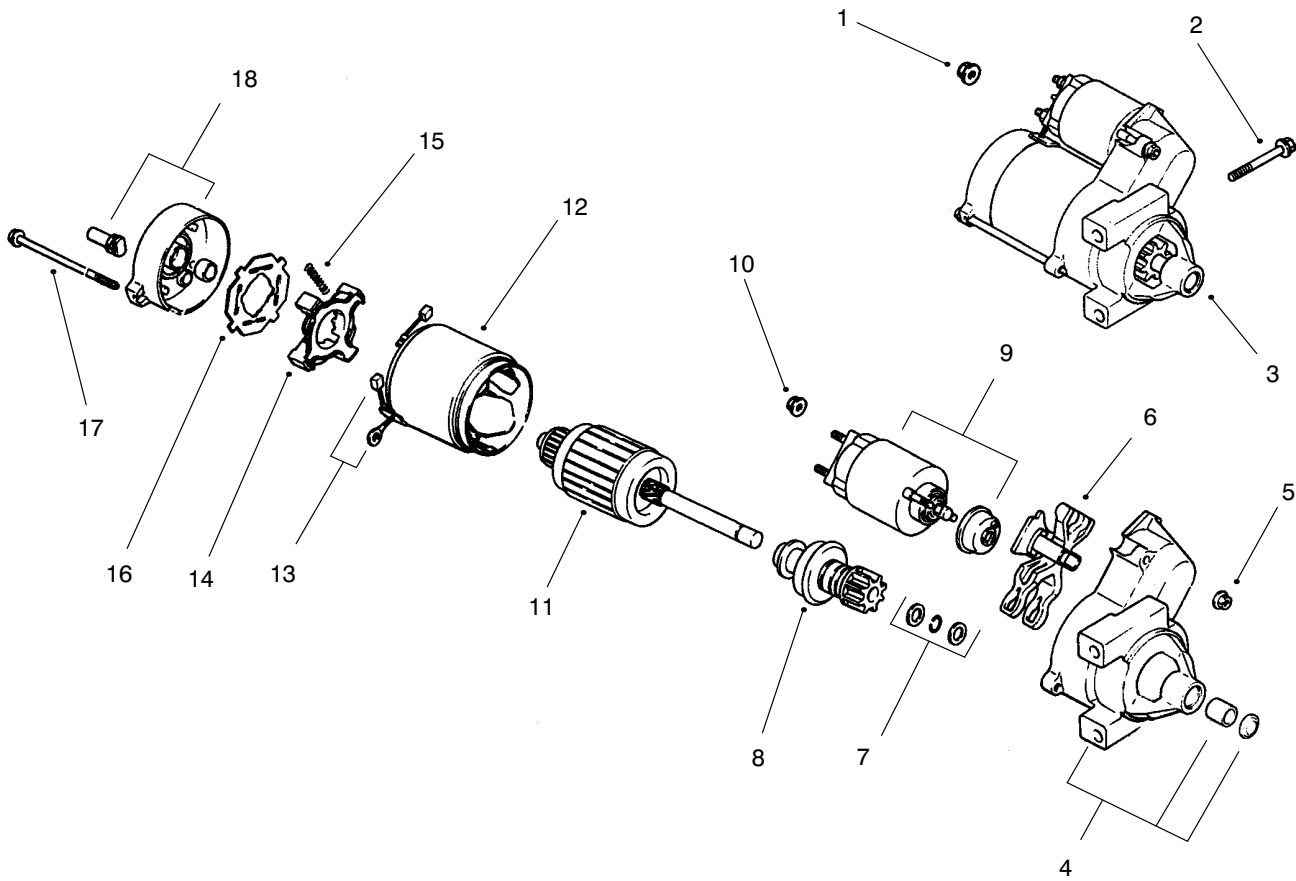


Group 6 – Blower Housing & Baffles (CH22S 76513 Kohler)

Ref. No.	Part No.	Description	No. Used
1	24 027 83	Housing, blower (Includes 2-5)	1
2	24 100 02	Nut, plastic	2
3	24 755 90	Kit, access hole plug	1
4	25 086 43	Screw, set	1
5	24 100 01	Nut, plastic	2
6	M-0551016	Screw, hex. flange	1
7	M-0545016	Screw, hex. flange	5
8	M-0567020	Screw, hex. flange	2
9	24 146 02	Plate, backing - #2 side	1

Ref. No.	Part No.	Description	No. Used
10	M-0645016	Screw, hex. flange	6
11	24 063 20	Baffle, cyl. barrel-#2 side	1
12	24 063 17	Baffle, valley - #2 side	1
13	M-0545010	Screw, hex. flange	2
14	24 063 24	Baffle, valley - #1 side	1
15	24 063 30	Baffle, cyl. barrel-#1 side	1
16	24 146 08	Plate, backing - #1 side	1
	24 113 62	Not Illustrated Decal, HP	1

Obtain Parts From Kohler

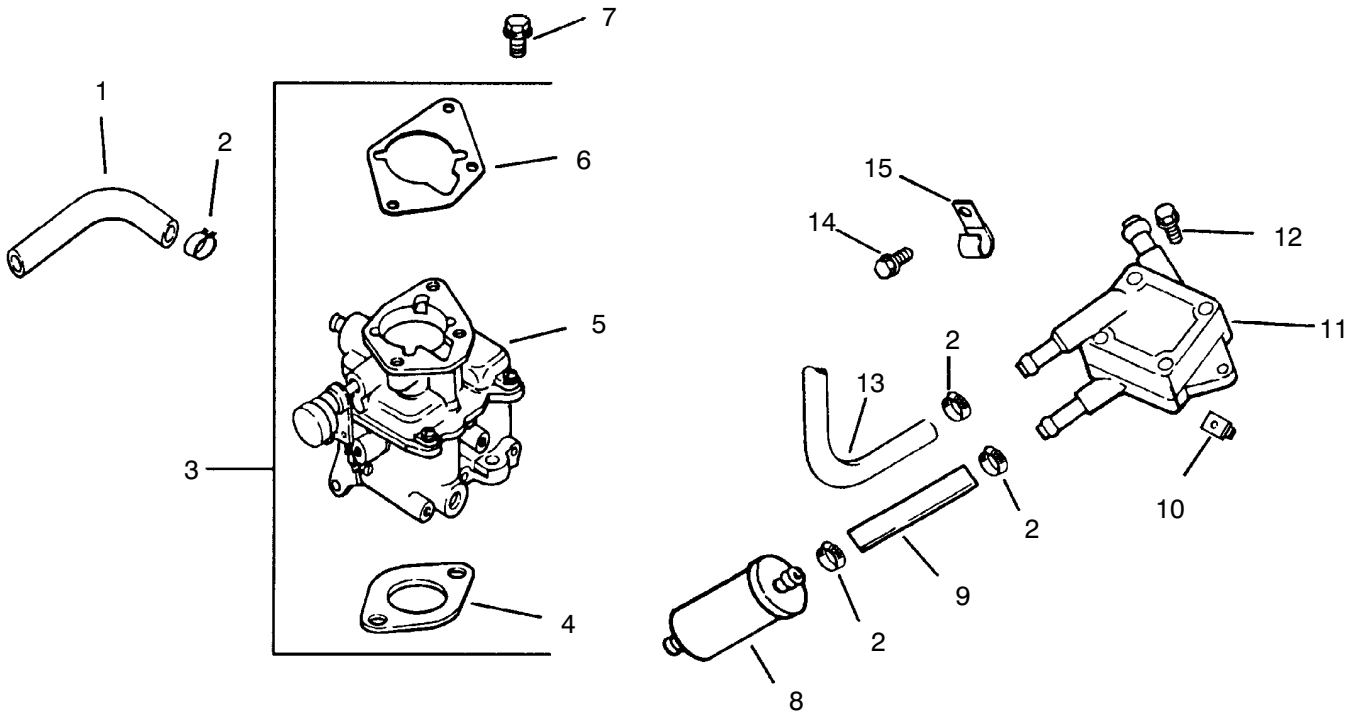


Group 7 – Starting System (CH22S 76513 Kohler)

Ref. No.	Part No.	Description	No. Used
1	M-0841080	Nut, hex flange	1
2	M-0839080	Screw, hex. flange	2
3	24 098 01	Starter, solenoid shift assembly (Incl. 4-18)	1
4	24 081 04	Drive, end cap	1
5	52 100 10	Nut, starter	2
6	12 090 10	Lever, starter drive	1
7	24 755 84	Kit, starter repair	1
8	12 239 01	Drive, pinion	1
9	52 435 02	Solenoid	1

Ref. No.	Part No.	Description	No. Used
10	52 100 09	Nut, starter	1
11	12 170 04	Armature, starter	1
12	12 471 01	Frame	1
13	52 221 01	Kit, brush & spring (Includes 15)	1
14	52 323 03	Holder, brush	1
15	52 089 09	Spring, brush	4
16	52 168 01	Insulator	1
17	52 211 05	Bolt, thru	2
18	24 301 01	Commutator, end cap	1

Obtain Parts From Kohler

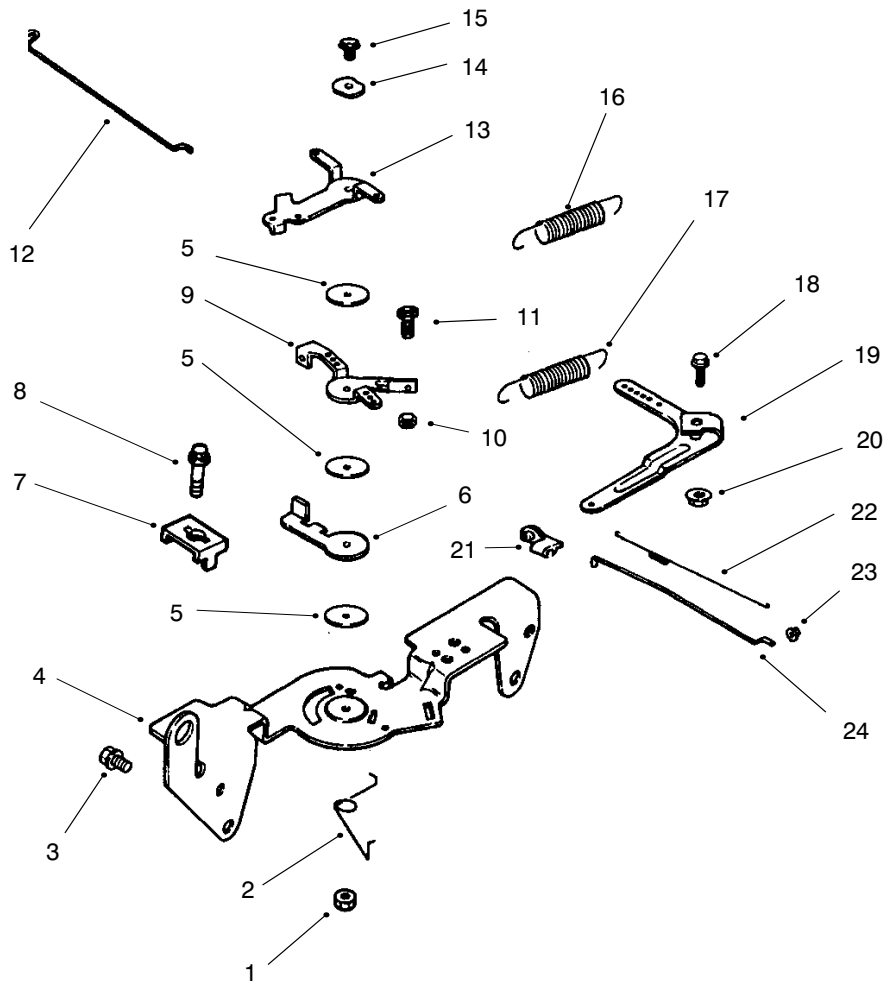


Group 8 – Fuel System (CH22S 76513 Kohler)

Ref. No.	Part No.	Description	No. Used
1	25 353 10	Line, fuel – 9"	2
2	X-426-9	Clamp, hose	6
3	24 853 34	Kit, carburetor w/gasket (Includes 4-6)	1
4	24 041 06	Gasket, air cleaner base	1
5	24 053 34	Carburetor assembly (For information only not available separately)	1
6	24 041 17	Gasket, carburetor	1

Ref. No.	Part No.	Description	No. Used
7	M-0651030	Screw, hex. flange	2
8	24 050 02	Filter, fuel	1
9	25 353 15	Line, fuel	1
10	24 100 01	Nut, plastic	2
11	24 393 04	Pump, fuel-pulse	1
12	24 086 12	Screw, hex	2
13	24 353 02	Line, fuel 15-1/2"	1
14	M-0650012	Screw, hex flange	1
15	47 154 01	Clip, cable	1

Obtain Parts From Kohler

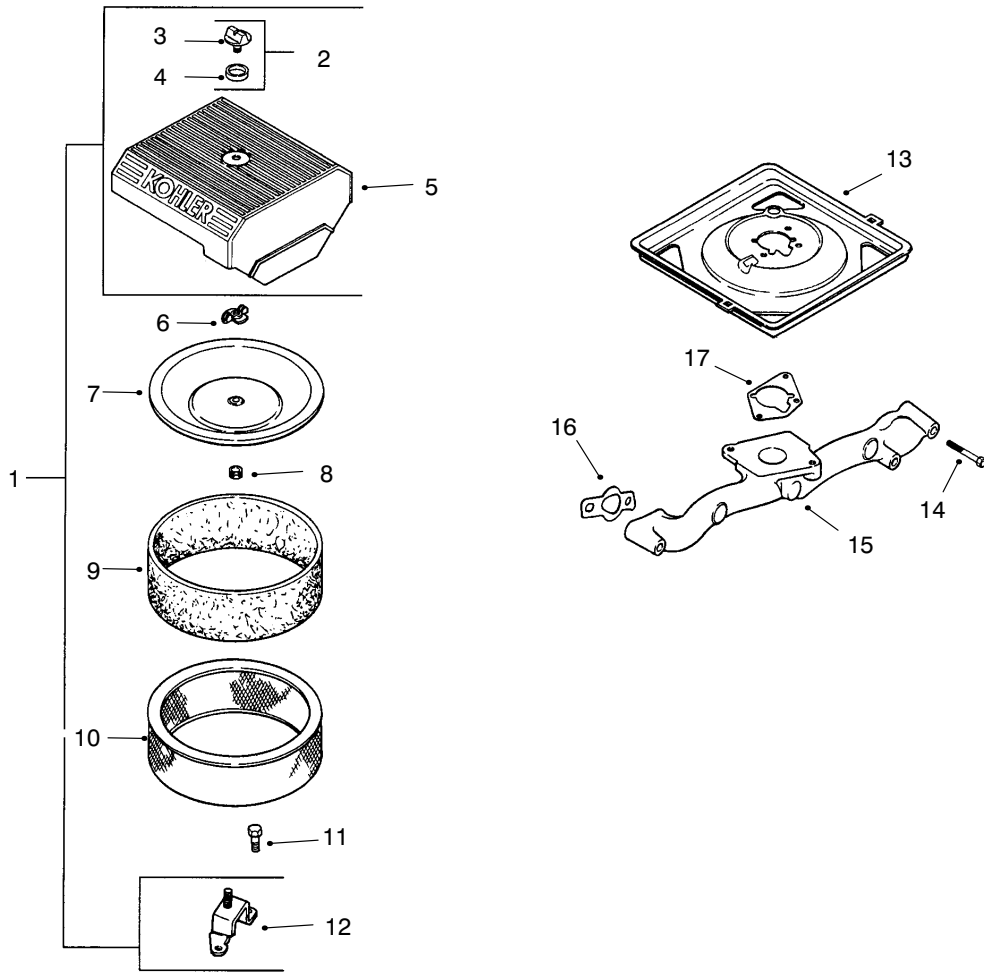


Group 9 – Engine Controls (CH22S 76513 Kohler)

Ref. No.	Part No.	Description	No. Used
1	M-0547050	Nut, hex. lock	1
2	24 089 03	Spring, choke return	1
3	M-0645016	Screw, hex. flange	4
4	24 126 56	Bracket, control	1
5	24 468 01	Washer, plain	3
6	24 090 07	Lever, throttle actuator	1
7	12 237 01	Clamp, cable	2
8	M-0545016	Screw, hex. flange	2
9	24 090 03	Lever, throttle control	1
10	M-0446030	Nut, hex	1
11	M-0401030	Screw, hex. cap	1
12	24 079 02	Linkage, choke	1

Ref. No.	Part No.	Description	No. Used
13	24 090 05	Lever, choke	1
14	41 468 03	Washer, spring	1
15	M-0545020	Screw, hex. flange	1
16	24 089 38	Spring, throttle limiter	1
17	24 089 15	Spring, governor	1
18	SM-0642025	Screw, hex. flange	1
19	24 090 14	Lever, governor	1
20	M-0641060	Nut, hex. flange	1
21	25 158 11	Bushing, linkage retaining	1
22	24 089 01	Spring, linkage	1
23	25 158 08	Bushing, linkage retaining	1
24	24 079 01	Linkage, throttle	1

Obtain Parts From Kohler

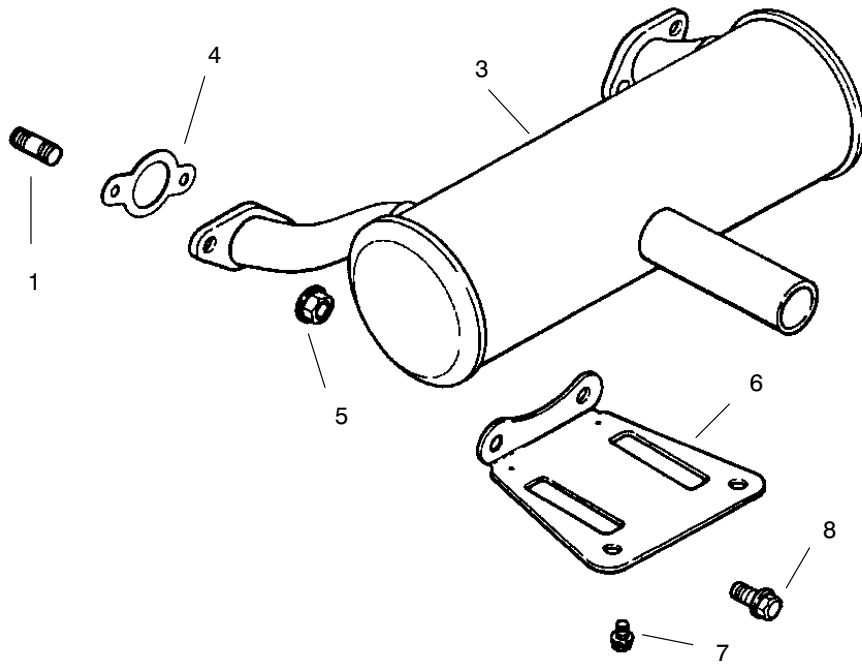


Group 10 – Air Intake/Filtration (CH22S 76513 Kohler)

Ref. No.	Part No.	Description	No. Used
1	24 753 05	Kit, air cleaner (Includes 2-5, 12)	1
2	54 755 01	Kit, air cleaner knob (Includes 3,4)	1
3	25 341 03	Knob, cover	1
4	24 153 15	O-Ring	1
5	24 096 24	Cover, air cleaner	1
6	12 100 01	Wing Nut	2
7	24 096 01	Cover, inner air cleaner	1
8	230046	Seal, inner air cleaner	1

Ref. No.	Part No.	Description	No. Used
9	24 083 05	Precleaner, element	1
10	24 083 03	Element, air cleaner	1
11	M-0645016	Screw, hex flange	3
12	24 126 43	Bracket, air cleaner base	1
13	24 094 11	Base, air cleaner	1
14	M-0651055	Screw, hex flange	4
15	24 164 14	Manifold, intake	1
16	24 041 01	Gasket, intake manifold	2
17	24 041 06	Gasket, air cleaner base	1

Obtain Parts From Kohler



Group 11 – Exhaust (CH22S 76513 Kohler)

Ref. No.	Part No.	Description	No. Used
1	25 072 04	Stud	4
3	24 068 17	Muffler Canister – Center Outlet	1
4	24 041 02	Gasket, exhaust	2

Ref. No.	Part No.	Description	No. Used
5	M-0841080	Nut, hex flange	4
6	24 126 12	Bracket, muffler	1
7	M-0650012	Screw, hex. flange	4
8	M-0839020		2

PROTOTYPE

Obtain Parts From Kohler



PROTOTYPE