



# **21" Recycler<sup>®</sup> /Rear Bagging**

**Walk Behind Mower**

**Model No. 20061 – 9900001 & Up**

---

*PROTOTYPE*

# **Parts Catalog**

## ORDERING REPLACEMENT PARTS

To order replacement parts, please supply: the part number, the quantity, and the description of each part desired.

## Contents

Description	Page	Description	Page
Housing, Handle Brackets, & Wheel Assembly . .	1	Carburetor No. 640020A . . . . .	8
Gear Case Assembly . . . . .	2	Tecumseh Engine	
Engine & Blade Assembly . . . . .	3	Model VLV126-502080E . . . . .	9-11
Gear Case & Wheel Assembly . . . . .	4	Recoil Starter No. 590739 . . . . .	12
Handle & Controls Assembly . . . . .	5	Recoil Starter No. 590702 (optional) . . . . .	13
Rear Bagging Discharge Chute Assembly . . . . .	6		
Bagging Assembly . . . . .	7	<b>Note:</b>	

## Accessories

Description	Model / Parts No.	Description	Model / Parts No.
Chute Plug Kit . . . . .	Model No. 59134		
Traction Assist Handle Kit . . . . .	Model No. 59196		

## Part Description Abbreviations

Part descriptions in this catalog may include the following abbreviations.

Abbreviation	Meaning	Abbreviation	Meaning
AR . . . . .	as required	HWHTF . . . . .	hex washer head thread forming
ASM . . . . .	assembly	INC . . . . .	incorporated
CARR . . . . .	carriage	LH . . . . .	left hand
DEG . . . . .	degrees	PH . . . . .	pan head
FH . . . . .	flat head	PPH . . . . .	Phillips pan head
GA . . . . .	gauge	PTO . . . . .	power take off
HF . . . . .	hex flange	RH . . . . .	right hand
HFW . . . . .	hex flange washer	SFH . . . . .	slotted fillister head
HH . . . . .	hex head	SH . . . . .	square head
HHF . . . . .	hex head flange	SHWH . . . . .	slotted hex washer head
HHST . . . . .	hex head self tapping	SPH . . . . .	slotted pan head
HJ . . . . .	hex jam	STD . . . . .	standard
HOC . . . . .	height-of-cut	TAP . . . . .	self tapping
HS . . . . .	hex socket	TH . . . . .	truss head
HSBH . . . . .	hex socket button head	TTH . . . . .	Torx truss head
HSFH . . . . .	hex socket flat head	WH . . . . .	wing head
HSH . . . . .	hex socket head		
HWH . . . . .	hex washer head		

## Important Format Explanations

This catalog uses special formats to convey information in illustrations and parts lists. Specifically, one format is used in conjunction with service assemblies and another with quantities associated with reference numbers.

## Service Assemblies

Parts within service assemblies have reference numbers in the form  $X:Y$ .  $X$  is the reference number of the service assembly and  $Y$  is a sequential number unique to each part within the service assembly.

For example, a wheel assembly might be identified by reference number 6, the tire by 6:1, the valve by 6:2, and the wheel by 6:3. When you order the assembly identified by reference number 6, you receive all parts identified by reference numbers 6:1, 6:2, and 6:3. However, you may also order any part individually.

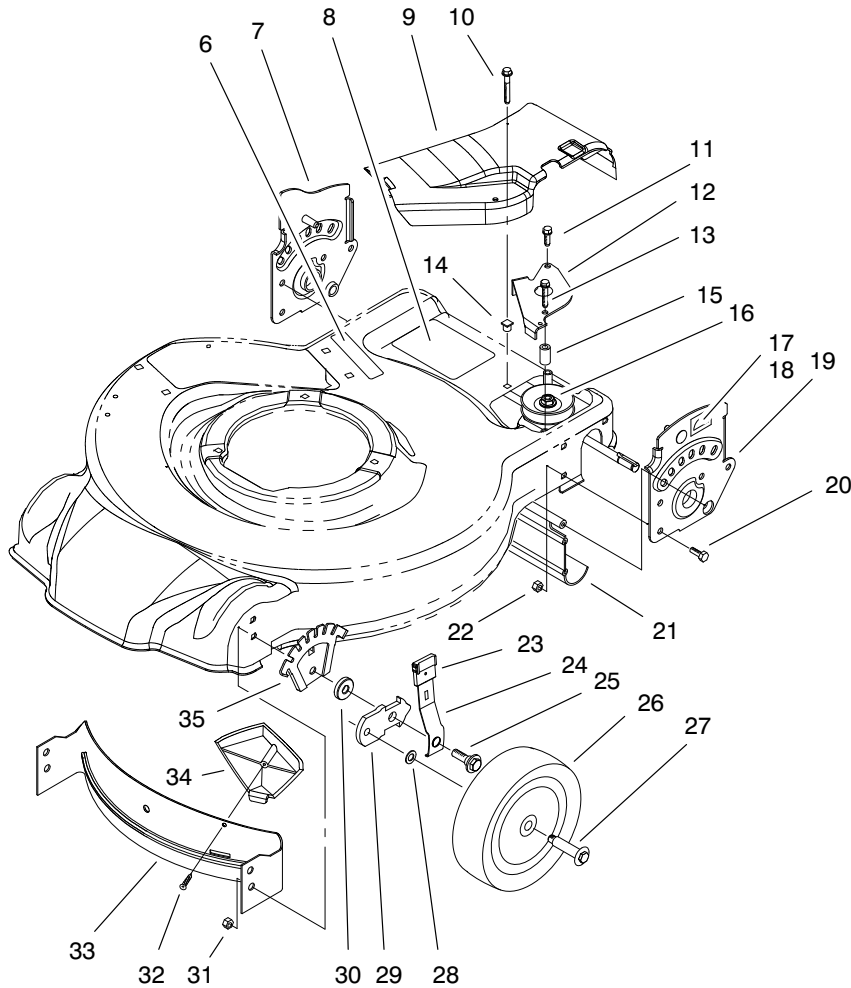
Reference numbers of this type appear in part lists and as callouts in illustrations.

## Reference Numbers with Quantities

Illustrations may have a quantity in parentheses next to a reference number, in the form  $X(Y)$ .  $X$  is the reference number.  $Y$  in parentheses is the quantity of the part identified by the reference number.

For example, the illustration callout 4 (2) indicates that two parts are used in that instance.

PROTOTYPE

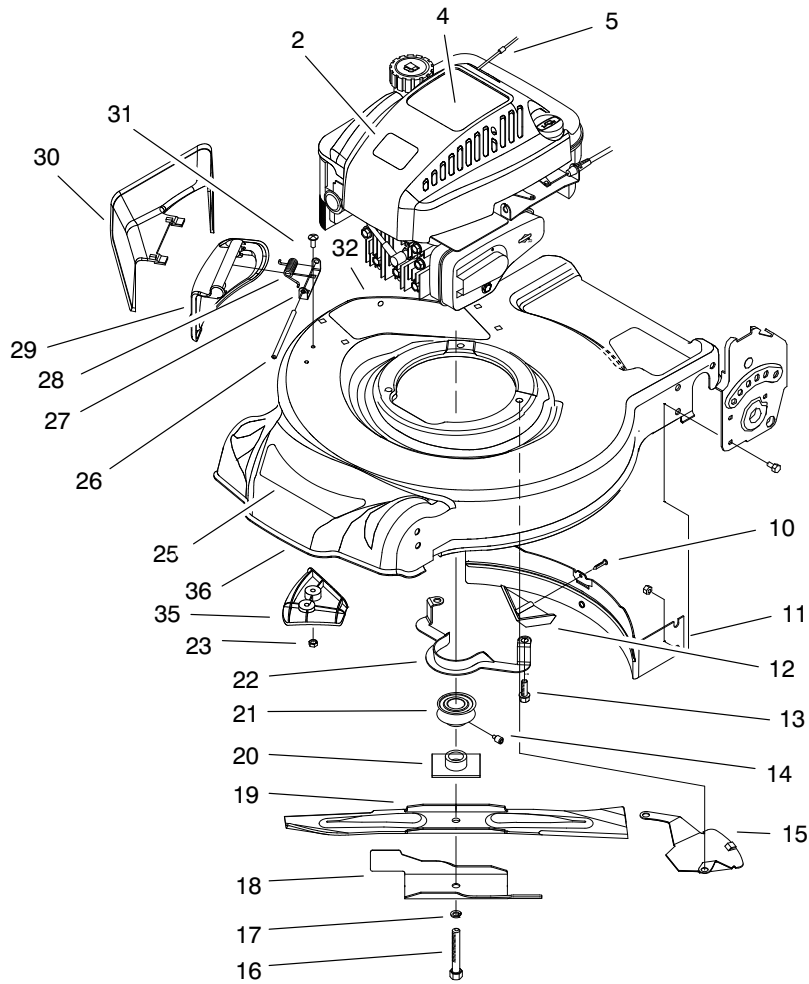


Sheet No.:2

## Housing, Handle Brackets, & Wheel Assembly

Ref. No.	Part No.	Qty.	Description	Ref. No.	Part No.	Qty.	Description
6	99-6018	1	Decal – Warning	26	92-9591	2	Assembly – 7” Wheel
7	99-5234	1	ASM – RH Handle Bracket	27	614672	2	Bolt-Shoulder
8	93-0248	1	Decal – Warning	28	40-1940	2	Washer-Wheel Bolt
9	99-1581	1	Cover-Belt (Pp Steel Deck)	29	95-7403-03	2	Brkt-Whl Ht Adj
10	32144-119	1	Screw-Pth	30	92-4890	2	Washer – Wheel
11	49-2040	1	Screw-Taptite	31	3296-39	2	Nut-Lock Ni
12	99-1567-03	1	Bracket-Belt Guide (Pp Steel)	32	93-0231	1	Screw – PPH
13	92-1616	1	Screw-Thread Forming	33	93-0222-03	1	Baffle – Front
14	605120	1	Grommet	34	93-0216	1	Kicker – Front
15	614673	1	Bushing – Actuator Plt	35	92-4881-03	2	Plate – Hght Adj
16	93-0240	1	ASM – Transmission				
17	92-2915	1	Decal – HOC L				
18	92-2914	1	Decal – HOC R				
19	99-5233	1	ASM – LH Handle Bracket				
20	322-3	6	Screw-HH				
21	92-8647	1	Shield – Trailing				
22	3296-29	6	Nut-Lock Ni				
23	92-1008	6	Knob-Height Adj Lever				
24	614687	2	Arm-Front Spring				
25	614650	2	Bolt-Shoulder				

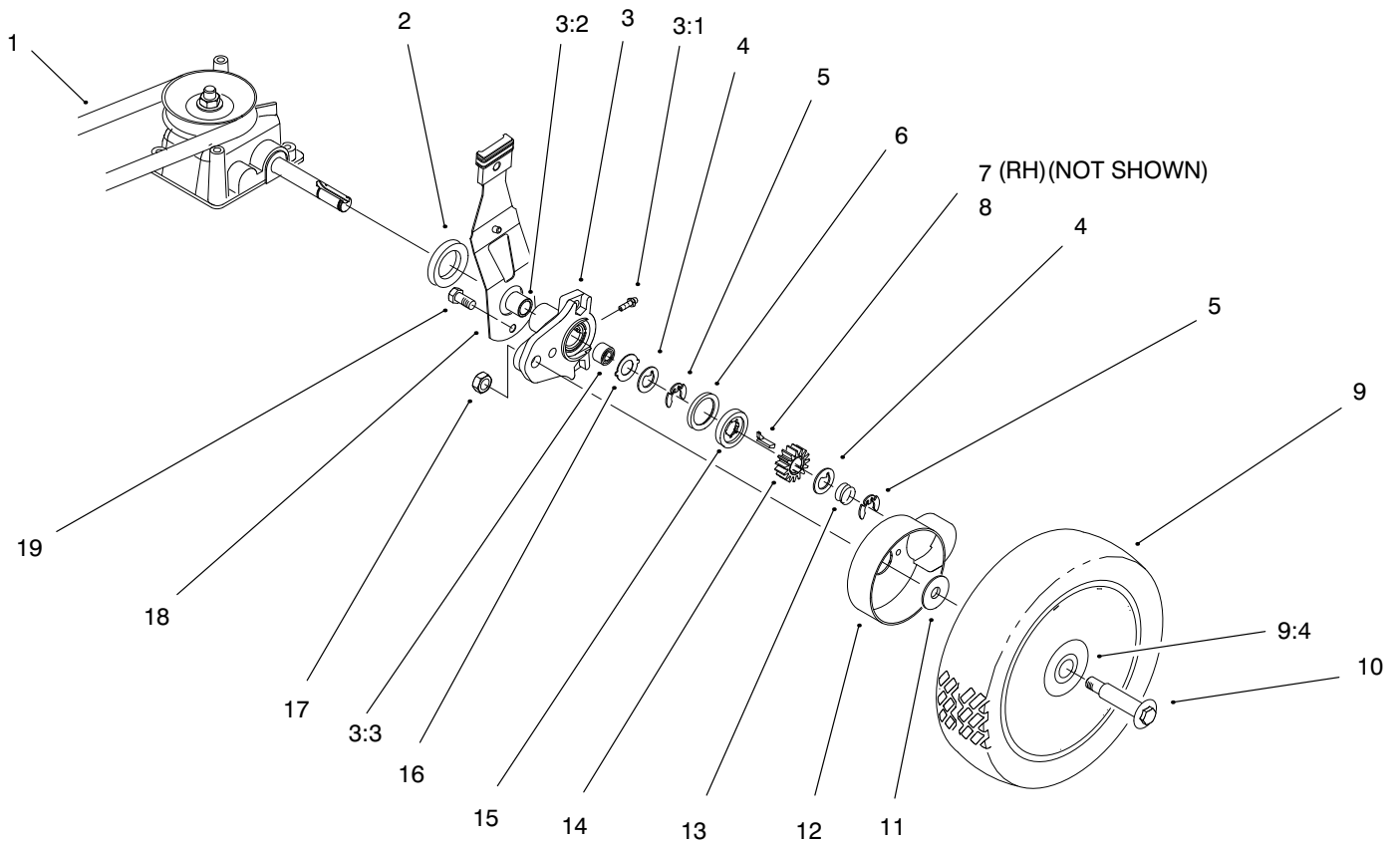




Sheet No.:3

## Engine & Blade Assembly

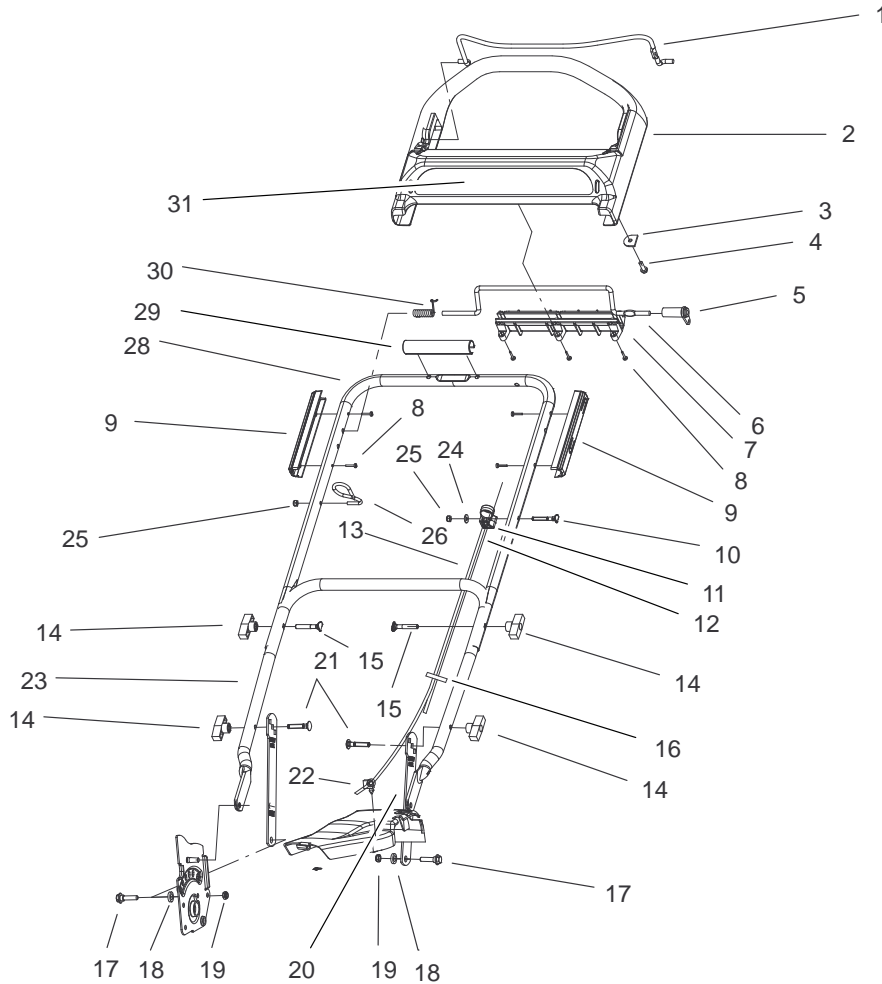
Ref. No.	Part No.	Qty.	Description	Ref. No.	Part No.	Qty.	Description
2	71-0600	1	Decal – Toro	28	99-5293	1	Spring-Torsion (Steel Side Discharge)
4	99-6338	1	Decal – Recoil – Millenium	29	99-5294	1	Cover-Side (Steel Side Discharge)
5	2210-316	1	Stop-Rope F/W Engine	30	99-5295	1	Chute-Side (Side Discharge)
10	93-0231	1	Screw – PPH	31	3229-11	2	Screw-CARR
11	93-0223-03	1	Baffle – Rear	32	43-8480	1	Decal-Danger
12	93-0217	1	Kicker – Rear	35	99-6349	1	Baffle
13	95-1726	3	Screw-Taptite w/Patch	36	99-5236	1	Housing Sp Steel (Service)
14	613227	1	Screw – Set				
15	93-4196-03	1	Shield – Grass				
16	95-1748	1	Screw-Blade				
17	3253-22	1	Washer-Lock/Sp				
18	93-0219-03	1	Accelerator				
19	93-0241	1	Blade – Steel Deck (Raw)				
20	99-5287	1	ASM-Blade Driver				
21	99-5244	1	Pulley-Assy				
22	99-1524-03	1	Guide-Belt (Steel Pp)				
23	32128-32	2	Nut-Hex, Flange				
25	99-6011	1	Decal – Deck				
26	99-5291	1	Rod-Cover (Steel Side Discharge)				
27	99-5292	1	Bracket-Cover (Steel Side Discharge)				



Sheet No.:4

## Gear Case & Wheel Assembly

Ref. No.	Part No.	Qty.	Description	Ref. No.	Part No.	Qty.	Description
1	99-1597	1	V-Belt (Pp Steel)				
2	614447	2	Spacer-Axle Shaft				
3	92-7746	2	ASM: Rear Ht Adj Arm				
3:1	302-56	1	Fitting-Zerk				
3:2	47-2900	1	Bushing				
3:3	70-9760	1	Bushing				
4	65-4740	4	Washer-Keyed Thrust				
5	65-2720	4	Klip Ring-Special				
6	65-4710	2	Ring-Friction				
7	66-6040	1	Key-Rocking				
8	66-6050	1	Key-Rocking LH				
9	92-9590	2	ASM -8" Wheel				
9:4	27-6250	2	Bushing				
10	92-1057	2	Shoulder Bolt				
11	614426	2	Washer-Stepped				
12	94-1609	2	Cover-Wheel				
13	65-4720	2	Spring-Compression				
14	65-4750	2	Pinion-Gear, 15t				
15	65-4760	2	Washer				
16	65-4730	2	Washer-Pivot Arm				
17	610358	2	Nut-Jam, Locking				
18	92-1004	2	Spring Arm ASM - Rear				
19	32144-85	2	Screw-TAP				



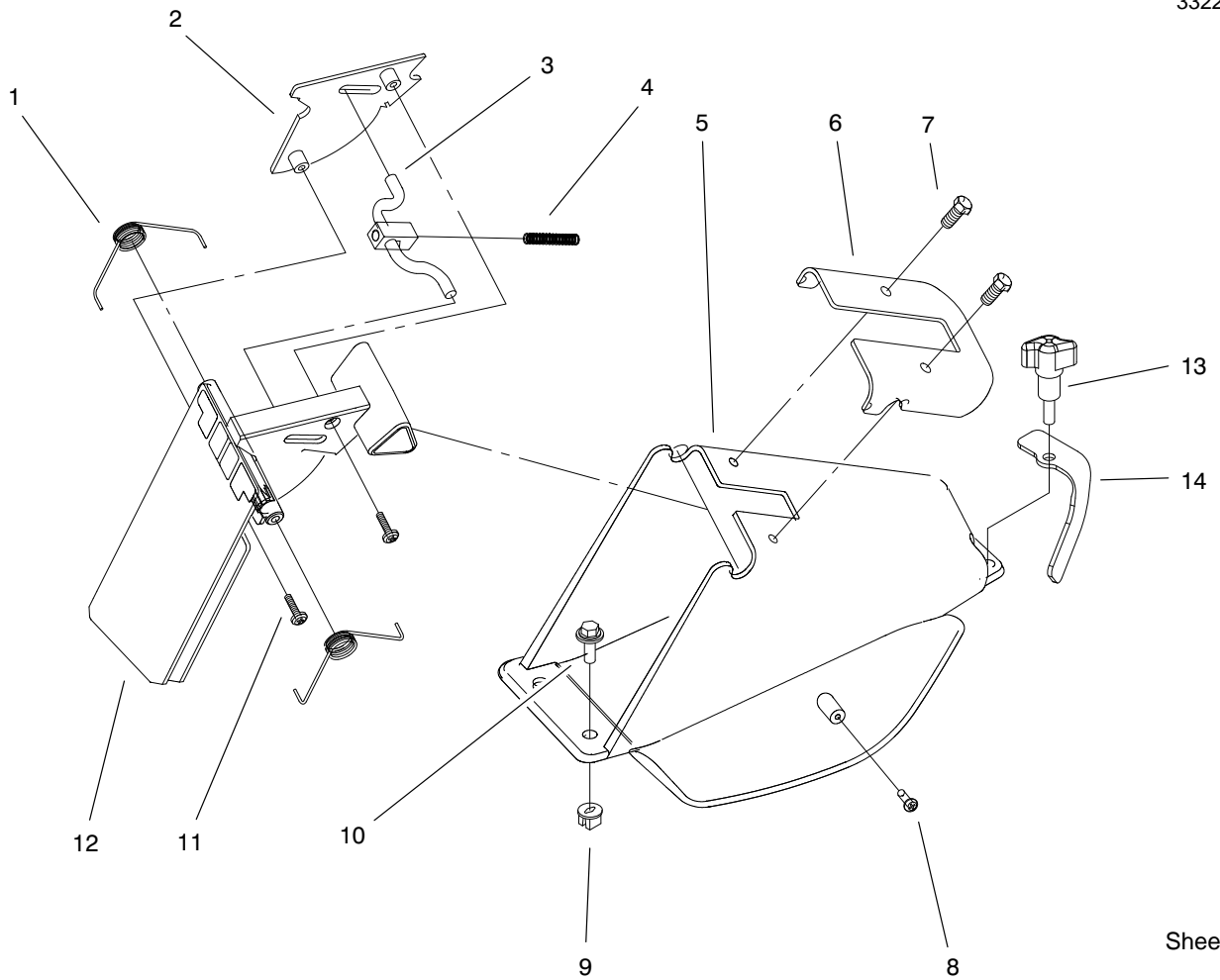
Sheet No.:5

## Handle & Controls Assembly

Ref. No.	Part No.	Qty.	Description
1	99-1593-03	1	Bail-Brake
2	99-1582	1	Handle-Control
3	99-1595	1	Retainer - Brake
4	46-8091	1	Special-HWH
5	99-1589	1	Lever-Traction
6	99-1588	1	Bar-Traction Control
7	99-6008	1	Retainer-Traction
8	94-4496	10	Control Rod
9	99-1590	2	Screw-Pan Hd
10	95-4453	1	Guide-Control Handle
11	99-5239	1	Screw - Handle
12	99-1510	1	Anchor-Cable
13	99-6337	1	Cable-Brake
14	98-7134	4	Knob-Handle
15	92-2260	2	Screw-Handle
16	3290-378	1	Tie-Cable
17	99-5284	2	Bolt-Shoulder
18	3-3287	2	Spacer-Handle Latch
19	3296-72	2	Nut-Lock Ni
20	99-5247-03	2	Support-Handle
21	99-6019	2	Screw-CARR
22	99-6385	1	Clip-Hold Down
23	99-5246-05	1	Handle-Lower
24	3256-1	1	Washer-Flat

Ref. No.	Part No.	Qty.	Description
25	3296-73	2	Nut-Lock
26	86-9671	1	Guide-Rope
28	99-1596-05	1	Handle-Upper
29	99-6339	1	Cover-Handle
30	99-1592	1	Spring-Torsion,RH
31	99-6016	1	Decal - Personal Pace (Steel)

PROTOTYPE

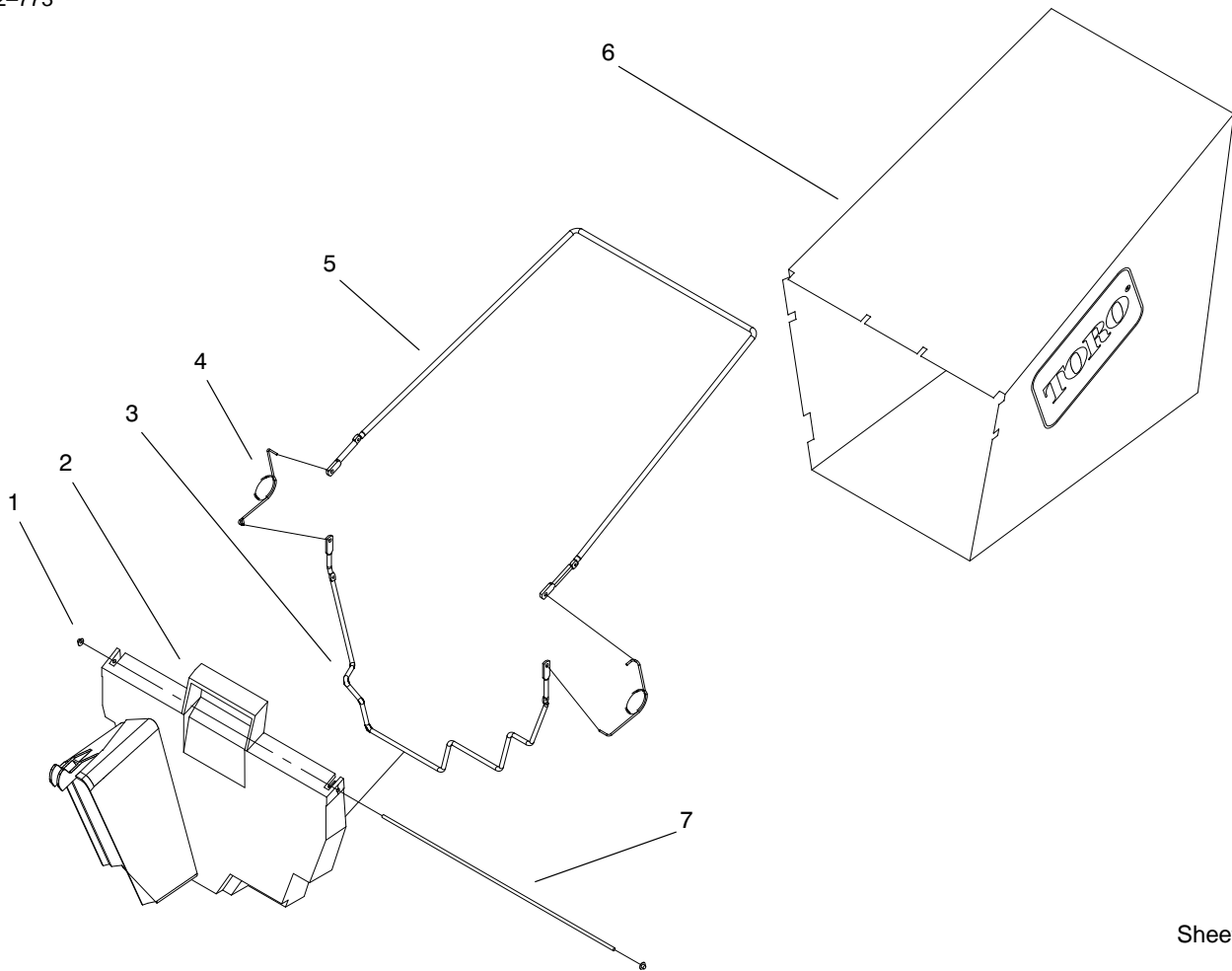


Sheet No.:7

## Rear Bagging Discharge Chute Assembly

Ref. No.	Part No.	Qty.	Description
1	88-1090	2	RH Door Spring
2	33-0441	1	Door Cover
3	88-1800	1	Door Latch
4	33-0450	1	Latch Comp Spring
5	93-0263	1	Chute - Discharge
6	93-0267-03	1	Plate-Discharg Chute
7	46-8090	2	Screw-Plastite
8	32144-111	1	Screw-Plask
9	93-0242	4	Grommet
10	46-6811	3	Screw/Washer
11	32144-32	2	Screw
12	93-0264	1	Door -Discharge
13	100-1590	1	Knob
14	100-1589-03	1	Clamp-Door

Ref. No.	Part No.	Qty.	Description

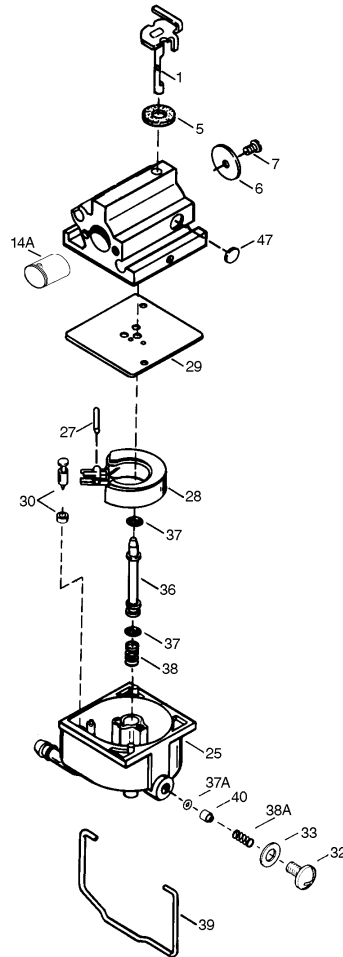


Sheet No.:8

### Bagging Assembly

Ref. No.	Part No.	Qty.	Description
1	3290-422	2	Nut-Push
2	93-0266	1	Door - Bag
3	93-0282	1	Frame - Lower Bag
4	36-6910	2	Spring
5	93-0281	1	Frame - Upper Bag
6	93-0284	1	Bag - Grass
7	93-0283	1	Hinge - Bag Door

Ref. No.	Part No.	Qty.	Description
PROTOTYPE			

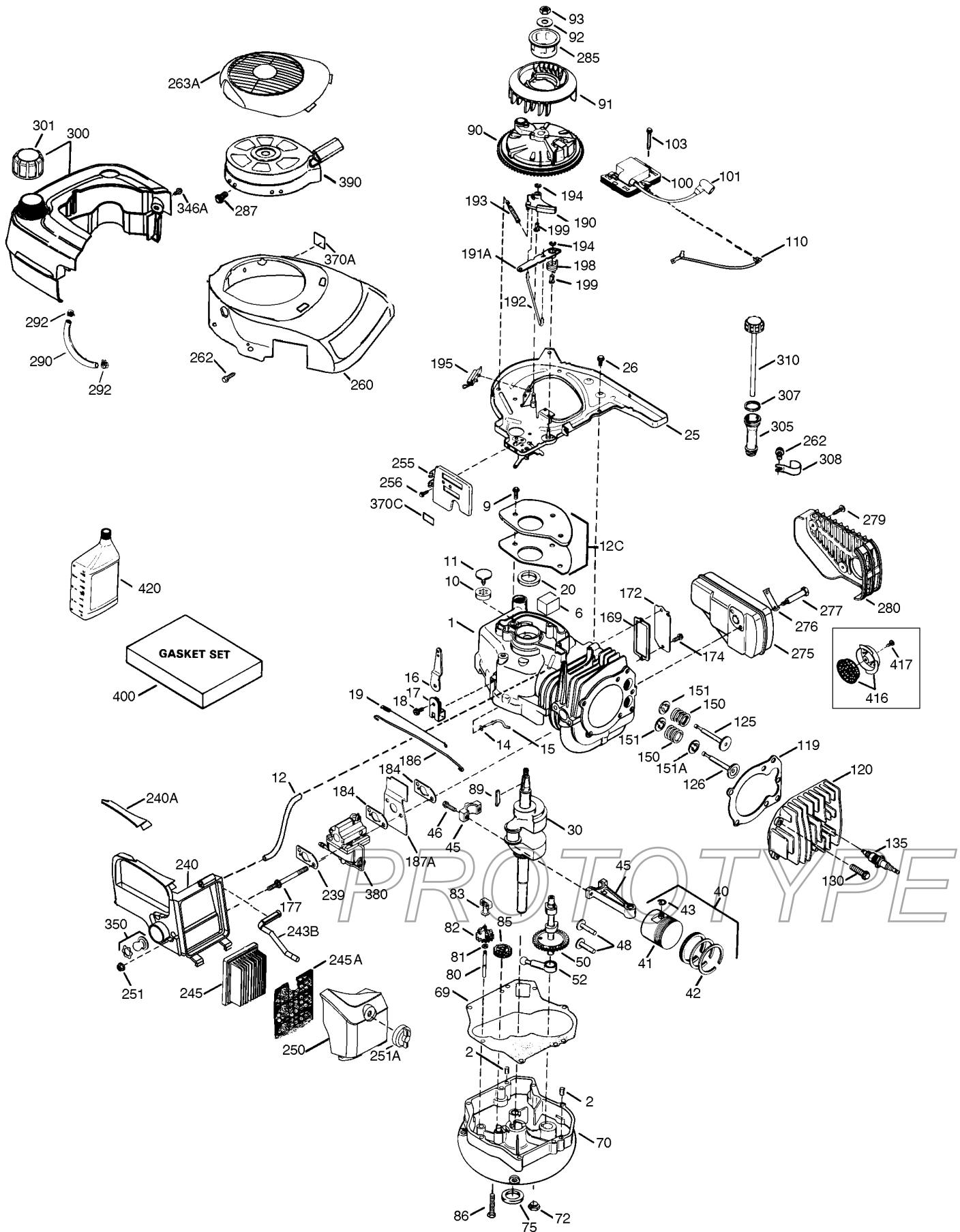


Sheet No:

### Carburetor No. 640020A

Ref. No.	Part No.	Qty.	Description	Ref. No.	Part No.	Qty.	Description
0	640020A	1	Carburetor (Incl. 187B & 239 of Engine Parts List)	47	632554	1	Welch Plug, Idle Mixing Well
1	632539	1	Throttle Shaft & Lever Assembly				
5	632593	1	Dust Seal				
6	632541	1	Throttle Shutter				
7	650506	1	Throttle Shutter Screw				
14A	632773	1	Venturi				
25	632675A	1	Float Bowl				
27	632544	1	Float Shaft				
28	632543	1	Float				
29	632548	1	Float Bowl to Body Gasket				
30	632709	1	Inlet Needle & Seat				
32	632672	1	Bowl Drain Screw				
33	632673	1	Bowl Drain Washer				
36	640022	1	Main Nozzle Tube				
37	632547	2	"O" Ring				
37A	632547	1	"O" Ring, Main Nozzle Tube				
38	632545	1	Spring, Main Nozzle Tube				
38A	632545	1	Spring				
39	632549	1	Float Bowl Retainer				
40	640021	1	Main Fuel Jet				

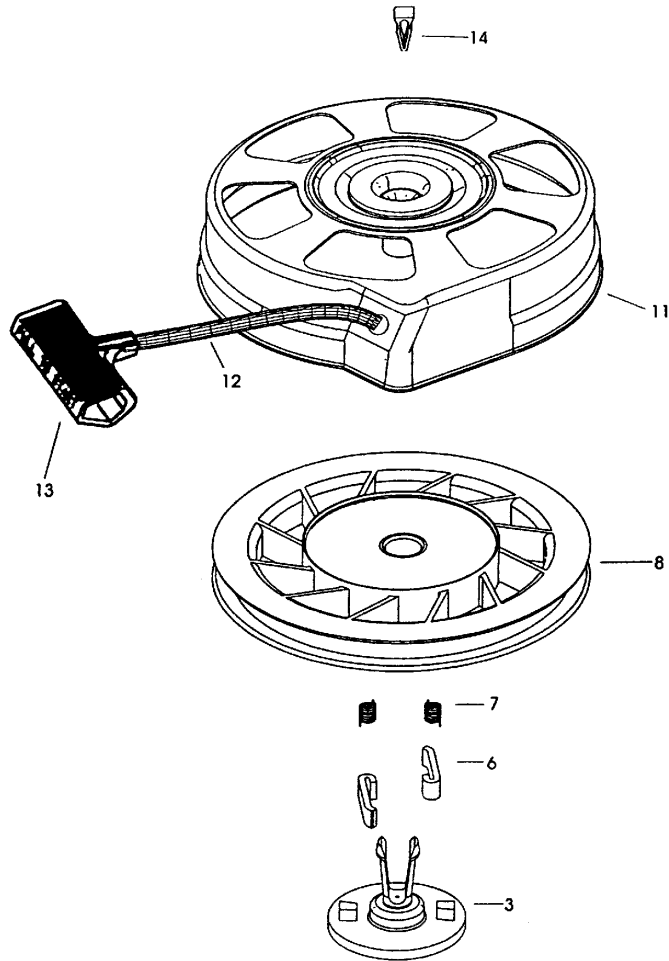
# Tecumseh Engine Model VLV126-502080E



# Tecumseh Engine Model VLV126-502080E (cont.)

Ref. No.	Part No.	Qty.	Description	Ref. No.	Part No.	Qty.	Description
0			RPM High 2850 to 3150	91	611156	1	Flwheel Fan
1	36177	1	Cylinder (Incl. 2,10,12,20 & 125)	92	650815	1	Belleville Washer
2	27652	2	Dowel Pin	93	650816	1	Flywheel Nut
6	36059	1	Breather Element	100	34443B	1	Solid State Ignition
9	590568	3	Screw, 10-24 x 3/4"	101	610118	1	Spark Plug Cover
10	36002	1	Breather Valve Body	103	651007	2	Screw, Torx T-15, 10-24 x 15/16"
11	36003A	1	Check Valve	110	36054	1	Ground Wire
12	32447	1	Breather Tube	119	36061	1	Cylinder Head Gasket
12C	36005A	1	Breather Cover & Gasket	120	36187	1	Cylinder Head
14	28277	1	Washer	125	36471	1	Exhaust Valve (Std.) (Incl. 151)
15	36006	1	Governor Rod (Machined)	125	36472	1	Exhaust Valve (1/32" OS)
16	36008	1	Governor Lever	126	29314C	1	Intake Valve (Std.) (Incl. 151)
17	31335	1	Governor Lever Clamp	126	29315C	1	Intake Valve (1/32" OS)
18	651018	1	Screw, Torx T-15, 8-32 x 19/64"	130	6021A	1	Screw, 5/16-18 x 1-1/2"
19	36103	1	Governor Spring	135	35395	1	Resistor Spark Plug (RJ19LM)
20	36010	1	Oil Seal	150	31672	2	Valve Spring
25	37300	1	Blower Housing Baffle (Incl. I95)	151	31673	2	Lower Valve Spring Cap
26	650802	3	Screw, 1/4-20 x 5/8"	151A	40016A	1	Intake Valve Seal
30	37321	1	Crankshaft	169	27234A	1	Valve Spring Box Gasket
40	40004	1	Piston, Pin, Ring Set (Std.)	172	32755	1	Valve Spring Box Cover
40	40005	1	Piston, Pin, Ring Set (.010 OS)	174	30200	2	Screw, 10-24 x 9/16"
41	36070	1	Piston & Pin Ass'y. (Std.) (Incl. 43)	177	650925A	2	Carburetor Mounting Stud
41	36071	1	Piston & Pin Ass'y. (.010 OS) (Incl. 43)	184	36183	2	Carburetor To Intake Pipe Gasket
42	40006	1	Ring Set (Std.)	186	36009	1	Governor Link
42	40007	1	Ring Set (.010 OS)	187A	37148	1	Air Baffle
43	20381	2	Piston Pin Retaining Ring	190	36013	1	Brake Lever Ass'y.
45	36023A	1	Connecting Rod Ass'y. (Incl. 46)	191A	36012	1	Brake Control Lever
46	32610A	2	Connecting Rod Bolt	192	36016	1	Brake Control Lever Link
48	36030	2	Valve Lifter	193	36015	1	Brake Spring
50	36031A	1	Camshaft (MCR)	194	36014	2	Retaining Ring
52	29914	1	Oil Pump Ass'y.	195	610973	1	Terminal Ass'y.
69	36032A	1	Mounting Flange Gasket	198	36017	1	Brake Control Lever Spring
70	37271	1	Mounting Flange (Incl. 72 thru 85)	199	36018	2	Brake Lever Bushing
72	36083	1	Oil Drain Plug	239	36048	1	Carburetor To Air Cleaner Gasket
75	36010	1	Oil Seal	240	36190	1	Air Cleaner Body
80	30574A	1	Governor Shaft	240A	37195	1	Air Cleaner Body Extension
81	30590A	1	Washer	243B	651041	1	Air Cleaner Stud
82	30591	1	Governor Gear Ass'y. (Incl. 81)	245	36046	1	Air Cleaner Filter
83	36057	1	Governor Spool	245A	37144	1	Air Cleaner Filter
85	36034	1	Idler Gear	250	36191	1	Air Cleaner Cover
86	650924	7	Screw, 1/4-20 x 1-9/16"	251	650928	2	Lock Nut, 1/4-20
89	611154	1	Flywheel Key	251A	650933	1	Wing Nut, 1/4-20
90	611155	1	Flywheel	255	36193	1	Control Plate
				256	650983	2	Screw, 8-32 x 21/64"





Sheet No.:

### Recoil Starter No. 590739

Ref. No.	Part No.	Qty.	Description	Ref. No.	Part No.	Qty.	Description
0	590739		Rewind Starter				
3	590740	1	Retainer				
6	590616	2	Starter Dog				
7	590617	2	Dog Spring				
8	590618A	1	Pulley & Rewind Spring Ass'y				
11	590638	1	Starter Housing Ass'y (40 degree grommet)				
12	590535	1	Starter Rope (Length 98" x 9/64" dia.)				
13	590701	1	Starter Handle				
14	590760	1	Spring Clip				



# Toro Part Number Index

Part No.	Page No.	Ref. No.	Qty.	Description
605120	1	14	1	Grommet
610358	4	17	2	Nut–Jam, Locking
613227	3	14	1	Screw – Set
614426	4	11	2	Washer–Stepped
614447	4	2	2	Spacer–Axle Shaft
614596	2	5	1	Gear –34t
614650	1	25	2	Bolt–Shoulder
614672	1	27	2	Bolt–Shoulder
614673	1	15	1	Bushing – Actuator Plt
614687	1	24	2	Arm–Front Spring
614696	2	8	1	Shaft–Intermediate
3–3287	5	18	2	Spacer–Handle Latch
27–6250	4	9:4	2	Bushing
33–0441	6	2	1	Door Cover
33–0450	6	4	1	Latch Comp Spring
36–4780	2	6	2	Washer
36–4791	2	11	2	Thrust Washer
36–6910	7	4	2	Spring
38–7820	2	13	1	Bearing–Ball
40–1940	1	28	2	Washer–Wheel Bolt
43–8480	3	32	1	Decal–Danger
46–6811	6	10	3	Screw/Washer
46–8090	6	7	2	Screw–Plastite
46–8091	5	4	1	Special–HWH
47–2900	4	3:2	1	Bushing
49–2040	1	11	1	Screw–Taptite
49–2040	2	9	4	Screw–Taptite
55–3760	2	10	1	15 T Pinion
60–8750	2	12	2	Bushing
60–8850	2	3	2	Bushing–Output
60–8890	2	15	1	Bevel Pinion Gear
62–6660	2	18	1	Spacer
65–2720	4	5	4	Klip Ring–Special
65–4710	4	6	2	Ring–Friction
65–4720	4	13	2	Spring–Compression
65–4730	4	16	2	Washer–Pivot Arm
65–4740	4	4	4	Washer–Keyed Thrust
65–4750	4	14	2	Pinion–Gear, 15t
65–4760	4	15	2	Washer
66–6040	4	7	1	Key–Rocking
66–6050	4	8	1	Key–Rocking LH
70–9760	4	3:3	1	Bushing
71–0600	3	2	1	Decal – Toro
86–9671	5	26	1	Guide–Rope
88–1090	6	1	2	RH Door Spring
88–1800	6	3	1	Door Latch
92–1004	4	18	2	Spring Arm ASM – Rear
92–1008	1	23	6	Knob–Height Adj Lever
92–1057	4	10	2	Shoulder Bolt
92–1616	1	13	1	Screw–Thread Forming
92–2260	5	15	2	Screw–Handle
92–2914	1	18	1	Decal – HOC R
92–2915	1	17	1	Decal – HOC L
92–4881–03	1	35	2	Plate – Hght Adj
92–4890	1	30	2	Washer – Wheel
92–7727	2	2	1	Gearcase
92–7746	4	3	2	ASM: Rear Ht Adj Arm
92–8647	1	21	1	Shield – Trailing
92–9590	4	9	2	ASM – 8” Wheel
92–9591	1	26	2	Assembly – 7” Wheel
93–0216	1	34	1	Kicker – Front
93–0217	3	12	1	Kicker – Rear

\*Not Illustrated

# Toro Part Number Index (cont.)

Part No.	Page No.	Ref. No.	Qty.	Description
93-0219-03	3	18	1	Accelerator
93-0222-03	1	33	1	Baffle - Front
93-0223-03	3	11	1	Baffle - Rear
93-0231	1	32	1	Screw - PPH
93-0231	3	10	1	Screw - PPH
93-0239	2	7	1	Shaft - Output
93-0240	1	16	1	ASM - Transmission
93-0241	3	19	1	Blade - Steel Deck (Raw)
93-0242	6	9	4	Grommet
93-0248	1	8	1	Decal - Warning
93-0263	6	5	1	Chute - Discharge
93-0264	6	12	1	Door - Discharge
93-0266	7	2	1	Door - Bag
93-0267-03	6	6	1	Plate-Discharg Chute
93-0281	7	5	1	Frame - Upper Bag
93-0282	7	3	1	Frame - Lower Bag
93-0283	7	7	1	Hinge - Bag Door
93-0284	7	6	1	Bag - Grass
93-4196-03	3	15	1	Shield - Grass
94-1609	4	12	2	Cover-Wheel
94-4496	5	8	10	Screw-Pan Hd
95-1726	3	13	3	Screw-Taptite w/Patch
95-1748	3	16	1	Screw-Blade
95-4453	5	10	1	Screw - Handle
95-7403-03	1	29	2	Brkt-Whl Ht Adj
98-7134	5	14	4	Knob-Handle
99-1510	5	12	1	Cable-Traction
99-1524-03	3	22	1	Guide-Belt (Steel Pp)
99-1567-03	1	12	1	Bracket-Belt Guide (Pp Steel)
99-1581	1	9	1	Cover-Belt (Pp Steel Deck)
99-1582	5	2	1	Handle-Control
99-1588	5	6	1	Bar-Traction Control
99-1589	5	5	1	Lever-Traction
99-1590	5	9	2	Guide-Control Handle
99-1592	5	30	1	Spring-Torsion,RH
99-1593-03	5	1	1	Bail-Brake
99-1595	5	3	1	Retainer - Brake Cable
99-1596-05	5	28	1	Handle-Upper
99-1597	4	1	1	V-Belt (Pp Steel)
99-5233	1	19	1	ASM - LH Handle Bracket
99-5234	1	7	1	ASM - RH Handle Bracket
99-5236	3	36	1	Housing Sp Steel (Service)
99-5239	5	11	1	Anchor-Cable
99-5244	3	21	1	Pulley-Assy
99-5246-05	5	23	1	Handle-Lower
99-5247-03	5	20	2	Support-Handle
99-5284	5	17	2	Bolt-Shoulder
99-5287	3	20	1	ASM-Blade Driver
99-5291	3	26	1	Rod-Cover (Steel Side Discharge)
99-5292	3	27	1	Bracket-Cover (Steel Side Discharge)
99-5293	3	28	1	Spring-Torsion (Steel Side Discharge)
99-5294	3	29	1	Cover-Side (Steel Side Discharge)
99-5295	3	30	1	Chute-Side (Side Discharge)
99-6008	5	7	1	Retainer-Traction Control Rod
99-6011	3	25	1	Decal - Deck
99-6016	5	31	1	Decal - Personal Pace (Steel)
99-6018	1	6	1	Decal - Warning
99-6019	5	21	2	Screw-CARR
99-6337	5	13	1	Cable- Brake
99-6338	3	4	1	Decal - Recoil - Millenium
99-6339	5	29	1	Cover-Handle
99-6349	3	35	1	Baffle

\*Not Illustrated

# Toro Part Number Index (cont.)

Part No.	Page No.	Ref. No.	Qty.	Description
99-6385	5	22	1	Clip-Hold Down
100-1176	2	17	2	Pulley Half
100-1589-03	6	14	1	Clamp-Door
100-1590	6	13	1	Knob
2210-316	3	5	1	Stop-Rope F/W Engine
302-56	4	3:1	1	Fitting-Zerk
322-3	1	20	6	Screw-HH
3229-11	3	31	2	Screw-CARR
3253-22	3	17	1	Washer-Lock/Sp
3256-1	5	24	1	Washer-Flat
3256-24	2	14	1	Washer-Flat
3285-19	2	4	2	Pin-Groove
3290-378	5	16	1	Tie-Cable
3290-422	7	1	2	Nut-Push
3296-5	2	16	1	Nut-Lock Ni
3296-29	1	22	6	Nut-Lock Ni
3296-39	1	31	2	Nut-Lock Ni
3296-72	5	19	2	Nut-Lock Ni
3296-73	5	25	2	Nut-Lock
32128-32	3	23	2	Nut-Hex, Flange
32144-32	6	11	2	Screw
32144-85	4	19	2	Screw-TAP
32144-111	6	8	1	Screw-Plask
32144-119	1	10	1	Screw-Pth
614668-03	2	1	1	Gear Case Cover

PROTOTYPE

