



62" Gage Wheel Kit

Part No. 100-3255

INSTALLATION INSTRUCTIONS

Loose Parts

Note: Use the chart below to identify parts for assembly.

DESCRIPTION	QTY.	USE
Right Bracket	1	Install Right Front Bracket
Right Rear Gusset	1	Install Right Rear Bracket
Left Rear Gusset	1	Install Left Rear Bracket
Gage Wheels	3	Install Gage Wheels
Stud	3	
Spring Disk	3	
Nut	3	
Washer	3	
Flange Nut	3	

Installing Right Front Bracket

1. Remove mower from unit. Refer to your operator manual for instructions.
2. Put a straight edge along the right side of the unit. Measure over 3-1/16 in. from the straight edge to locate the position for bracket (Fig. 1).
3. Measure 3-3/8 in. down from the top of the deck to the center of the top hole in bracket (Fig. 2).
4. Hold bracket and mark mounting location.
5. Remove paint from areas that will be welded (Fig. 1 and 2).
6. Weld bracket to the mower deck. Weld at a 3° angle (Fig. 1 and 2).

Note: When brackets are placed against deck they will be at approximately a 3 degree angle. When deck is mounted to unit it will become aligned with unit.

7. Repaint the area that was welded.

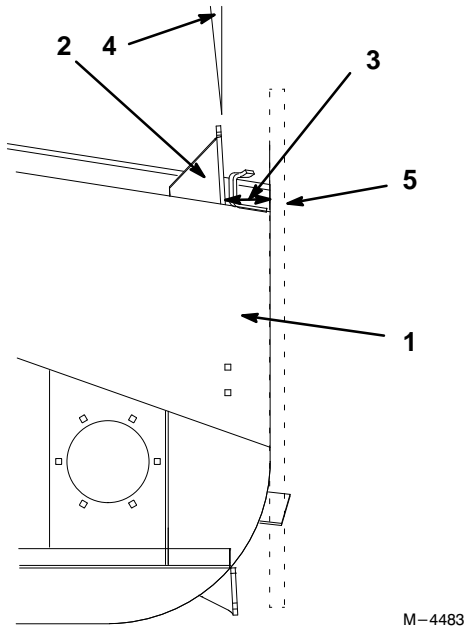


Figure 1

1. Rightside of Deck
2. Right Front Bracket
3. 3-1/16 in. (Straight edge to deck)
4. 3° Angle
5. Straight Edge

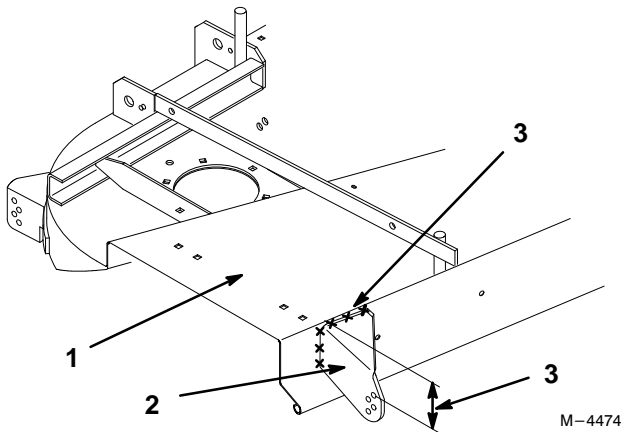


Figure 2

1. Rightside of Deck
2. Right Front Bracket
3. 3-3/8 in. (Top of deck to center of top hole in bracket)
4. Weld Here X

Installing Right Rear Gusset

1. Using the straight edge along the right side of the unit, measure over 2-13/32 in. from the straight edge to locate the position for bracket (Fig. 3).
2. Measure 1-5/16 in. down from the top of the deck to the center of the top hole in gusset (Fig. 4).
3. Hold wheel bracket and mark mounting location (Fig. 4).
4. Remove paint from areas that will be welded (Fig. 3 and 4).
5. Weld bracket to the mower deck. Weld at a 3° angle (Fig. 3 and 4).
6. Repaint the area that was welded.

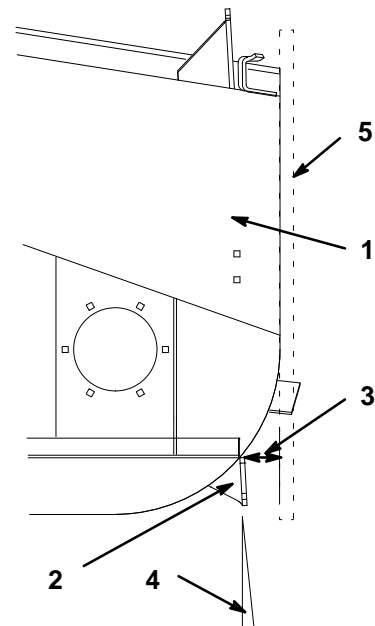


Figure 3

1. Rightside of Deck
2. Right Rear Gusset
3. 2-13/32 in. (Straight edge to deck)
4. 3° Angle
5. Straight Edge

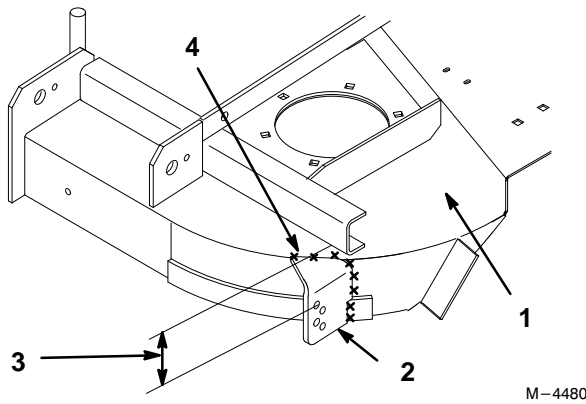


Figure 4

1. Rightside of Deck
2. Right Rear Bracket
3. 1-5/16 in. (Top of deck to center of top hole in gusset)
4. Weld Here X

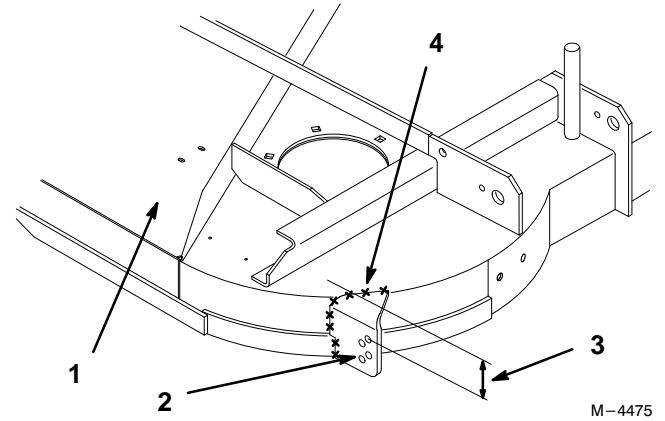


Figure 5

1. Left Side of Deck
2. Left Rear Gusset
3. 1-5/16 in. (Top of deck to center of top hole in gusset)
4. Weld Here X

Installing Left Rear Gusset

1. Put a straight edge along the left side of the unit for a reference. Measure over 3 in. from the straight edge to locate the position for bracket (Fig. 6).
2. Measure 1-5/16 in. down from the top of the deck to the center of top hole in gusset (Fig. 5).
3. Hold wheel bracket and mark mounting location.
4. Remove paint from areas that will be welded (Fig. 5 and 6).
5. Weld bracket to the mower deck. Weld at a 3° angle (Fig. 5 and 6).
6. Repaint the area that was welded.

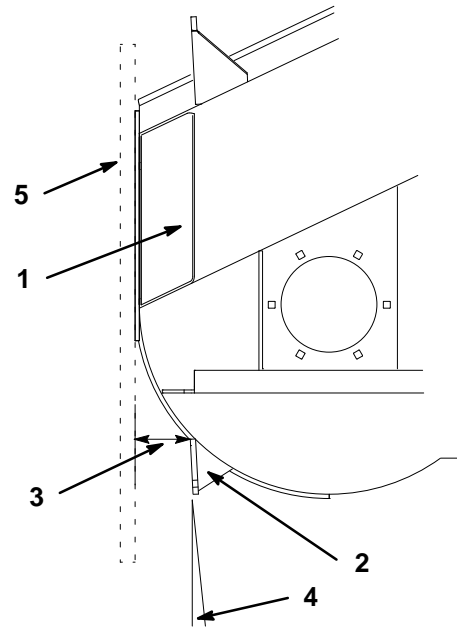


Figure 6

1. Leftside of Deck
2. Left Rear Bracket
3. 3 in. (Straight Edge to Deck)
4. 3° Angle
5. Straight Edge

Installing Gage Wheels

1. Install stud into gage wheel. Install washer and nut and tighten (Fig. 7).
2. Select hole so gage wheel is positioned to the nearest corresponding height-of-cut desired (Fig. 7).
3. Install flange nut and spring disk while holding stud with wrench (Fig. 7).
4. Repeat installation on other gage wheels.

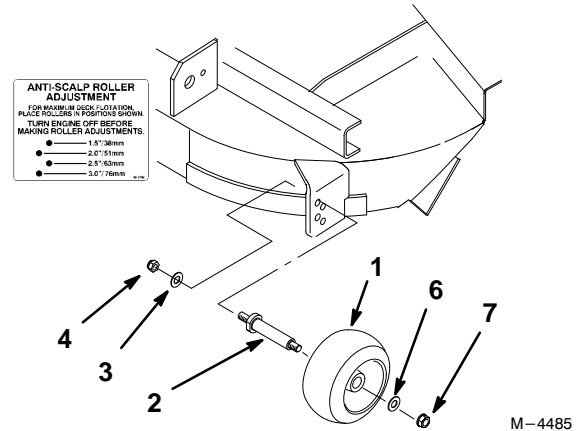


Figure 7

- | | |
|----------------|--|
| 1. Gage Wheel | 5. Wheel nut and washer.
Do Not Remove. |
| 2. Stud | 6. Washer |
| 3. Spring Disk | 7. Nut |
| 4. Flange Nut | |
-

Adjusting Gage Wheels

Whenever you change the height-of-cut it is recommended to adjust the height of the anti-scalp rollers.

1. Disengage the power take off (PTO) and turn the ignition key to “OFF” to stop the engine. Move controllers to neutral locked position and apply parking brake. Remove the key.
2. Remove flange nut and spring disk while holding stud with wrench (Fig. 7).

Note: Do not remove the wheel nut and washer (Fig. 7).

3. Select hole so gage wheel is positioned to the nearest corresponding height-of-cut desired (Fig. NO TAG).
4. Reinstall the flange nut and spring disk (Fig. 7).
5. Repeat adjustment on other gage wheels.