



522 Snowthrower

Model No. 38051—200000001 and Up

Parts Catalog

Ordering Replacement Parts

To order replacement parts, please supply: the part number, the quantity, and the description of each part desired.

Understanding Reference Numbers

Each identified part in an illustration has a reference number. The reference number for a part also appears in the parts list, along with other information about the part.

This catalog uses two special reference number formats, one to indicate parts in a service assembly and another to indicate the quantity of a given part in an illustration.

Service Assembly Reference Numbers

Parts in service assemblies have reference numbers in the form **a:b**. The **a** represents the reference number of the entire service assembly and the **b** represents a sequential number unique to each part within the service assembly.

For example, a wheel assembly might be identified by reference number **6**, the tire by **6:1**, the valve by **6:2**, and the wheel by **6:3**. When you order the assembly identified by reference number **6**, you receive all parts identified by reference numbers **6:1**, **6:2**, and **6:3**. However, you may also order any part individually.

Reference numbers of this type appear in illustrations and in part lists.

Reference Numbers Indicating Quantity

In an illustration, if a reference number indicates more than one part, the reference number has the form **nX y**. The **n** represents the quantity of the part, the **X** is the multiplication symbol, and the **y** represents the reference number.

For example, in an illustration, the reference number **2X 37** means that two of the parts identified by reference number **37** are indicated.

Contents

| Description | Page | Description | Page |
|--|------|---|------|
| Chute and Auger Assembly | 3 | Linkage and Traction Assembly | 9 |
| 22" Gear Case Assembly No. 37-6962 | 4 | Engine Tecumseh Model HSSK50-67401S | 10 |
| Traction Assembly | 5 | Rewind Starter No. 590742 | 14 |
| Traction Assembly (Continued) | 6 | Starter Motor No. 33290E | 15 |
| Engine Assembly | 7 | Carburetor No. 640084A | 16 |
| Handle Assembly | 8 | | |

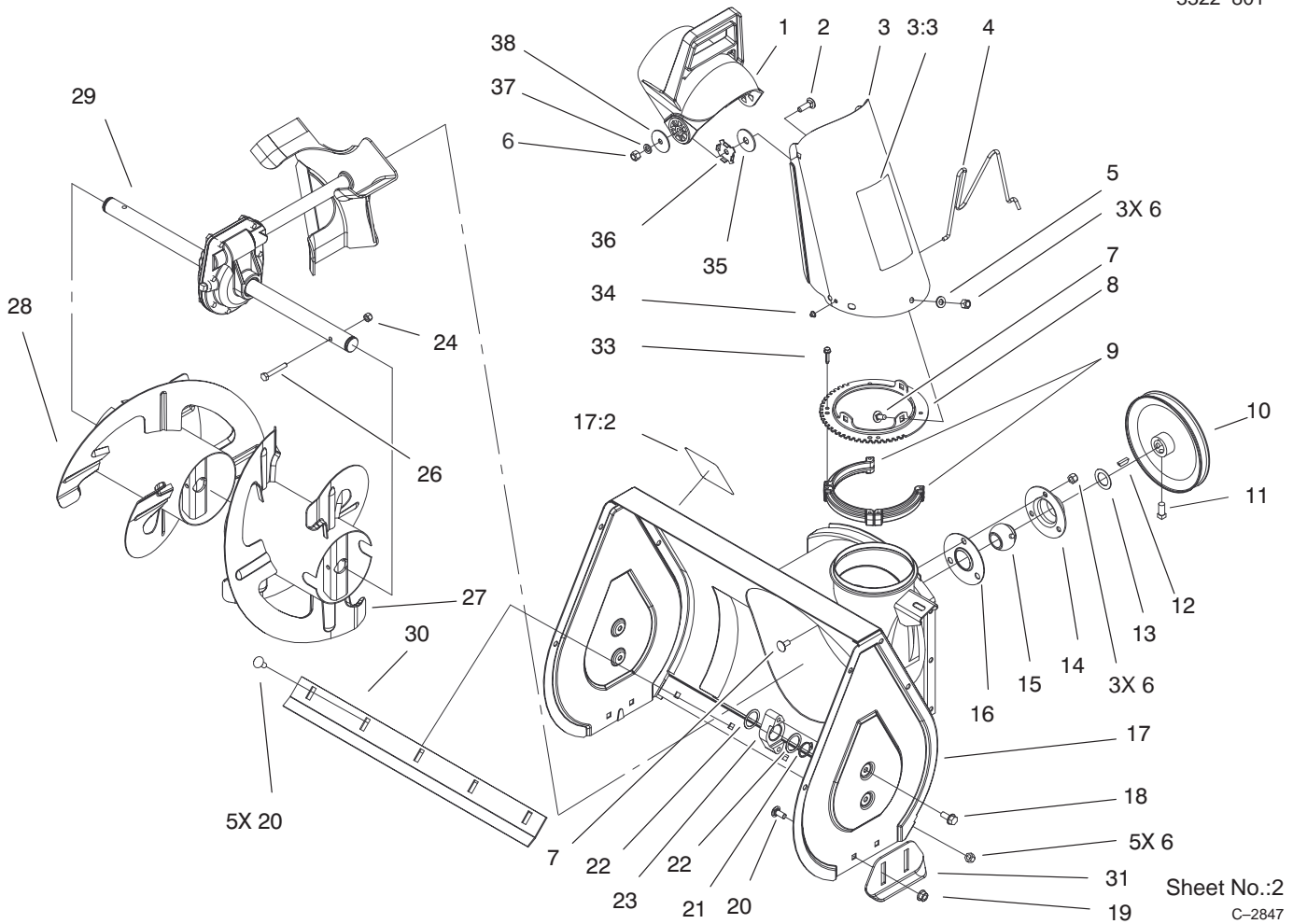
Accessories

| Description | Model / Part No. | Description | Model / Part No. |
|------------------------------------|------------------|-------------------------|------------------|
| 110 Vac Electric Starter Kit | 38036 | Drift Breaker Kit | 37-7022 |
| Tire Chain Kit | 56-2700 | Snow Cab | 88-0600 |

Part Description Abbreviations

Part descriptions in this catalog may include the following abbreviations.

| Abbreviation | Meaning | Abbreviation | Meaning |
|--------------|-----------------------------------|--------------|-------------------------|
| AR | as required | INC | incorporated |
| ASM | assembly | LH | left hand |
| CARR | carriage | NI | nylon insert |
| DEG | degrees | PPH | Phillips pan head |
| FH | flat head | PTH | Phillips truss head |
| GA | gauge | PTO | power take off |
| HF | hex flange | RH | right hand |
| HH | hex head | SFH | slotted fillister head |
| HHF | hex head flange | SHH | slotted hex head |
| HLH | hex lag head | SQH | square head |
| HJ | hex jam | SHWH | slotted hex washer head |
| HOC | height-of-cut | SPH | slotted pan head |
| HS | hex socket | SRH | slotted round head |
| HSBH | hex socket button head | STD | standard |
| HSFH | hex socket flat head | TAP | self tapping |
| HSH | hex socket head | TTH | Torx truss head |
| HWH | hex washer head | WH | wing head |
| HWHTF | hex washer head thread forming | | |

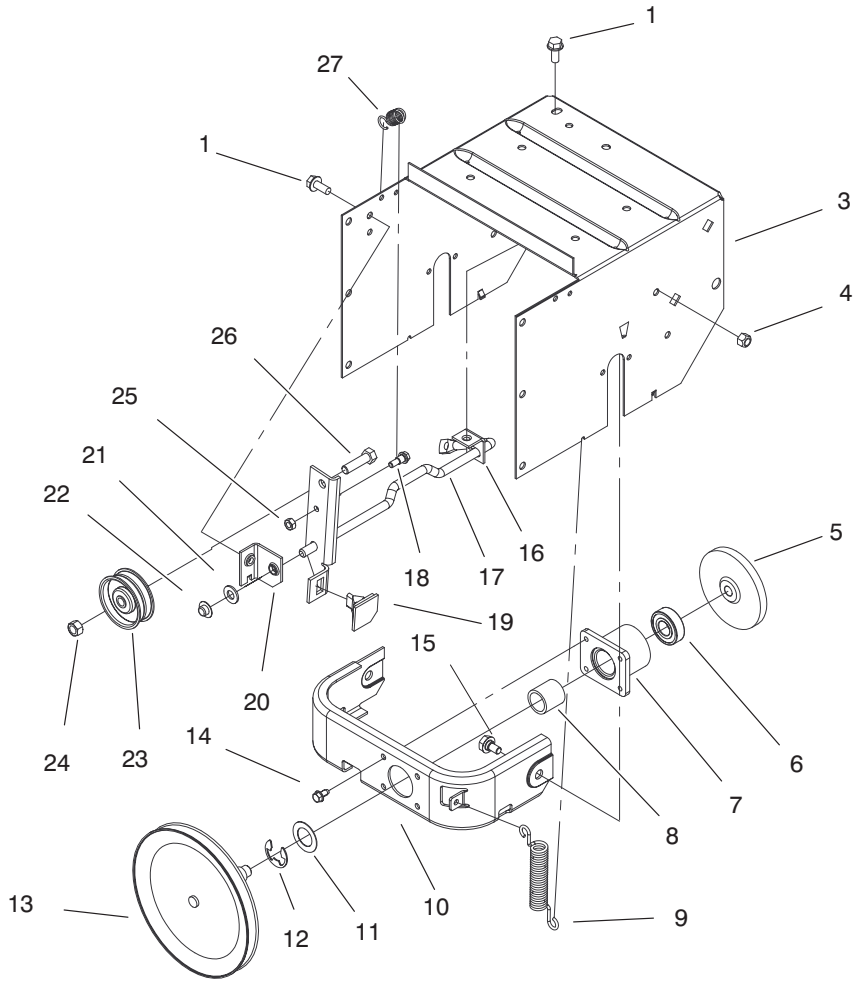


Sheet No.:2
C-2847

Chute and Auger Assembly

| Ref. No. | Part No. | Qty. | Description |
|----------|------------|------|----------------------|
| 1 | 56-2680 | 1 | Chute-Deflector |
| 2 | 3230-22 | 2 | Screw-CARR |
| 3 | 94-2793 | 1 | Chute ASM |
| 3:3 | 94-8079 | 1 | Decal-Danger |
| 4 | 56-2670 | 1 | Wire-Chute |
| 5 | 3256-23 | 3 | Washer-Flat |
| 6 | 3296-29 | 13 | Nut-Lock |
| 7 | 3230-18 | 6 | Screw-CARR |
| 8 | 37-8941-03 | 1 | Ring-Chute |
| 9 | 37-6490 | 3 | Ring-Chute, Retainer |
| 10 | 37-6890 | 1 | Pulley |
| 11 | 3242-4 | 2 | Screw-SQH Set |
| 12 | 3257-23 | 1 | Key-Woodruff |
| 13 | 3-0737 | 1 | Washer |
| 14 | 26-6110 | 1 | Flange-Cup, Bearing |
| 15 | 63-3450 | 1 | Bearing-Ball |
| 16 | 26-6120 | 1 | Flange-Cup, Bearing |
| 17 | 94-9872 | 1 | Auger Housing ASM |
| 17:2 | 53-7670 | 1 | Decal-Warning, Auger |
| 18 | 32144-70 | 4 | Screw-HH |
| 19 | 32128-20 | 4 | Nut-HF |
| 20 | 3230-1 | 9 | Screw-CARR |
| 21 | 32151-36 | 2 | Ring-Retaining |
| 22 | 5-1550 | 4 | Washer |
| 23 | 37-6550 | 2 | Bearing-Auger |

| Ref. No. | Part No. | Qty. | Description |
|----------|-------------|------|-------------------|
| 24 | 3296-42 | 2 | Nut-Lock |
| 26 | 321-10 | 2 | Screw-HH |
| 27 | 39-1190-03 | 1 | Auger, LH |
| 28 | 39-1180-03 | 1 | Auger, RH |
| 29 | 37-6962 | 1 | 22" Gear Case ASM |
| 30 | 100-3554-01 | 1 | Blade-Scraper |
| 31 | 40-8160-01 | 2 | Skid |
| 33 | 27-0220 | 6 | Screw-Special |
| 34 | 3290-326 | 1 | Nut-Push |
| 35 | 20-4320 | 2 | Washer-Rubber |
| 36 | 55-8950 | 2 | Plate-Friction |
| 37 | 3290-456 | 2 | Washer-Belleville |
| 38 | 3256-68 | 2 | Washer-Flat |

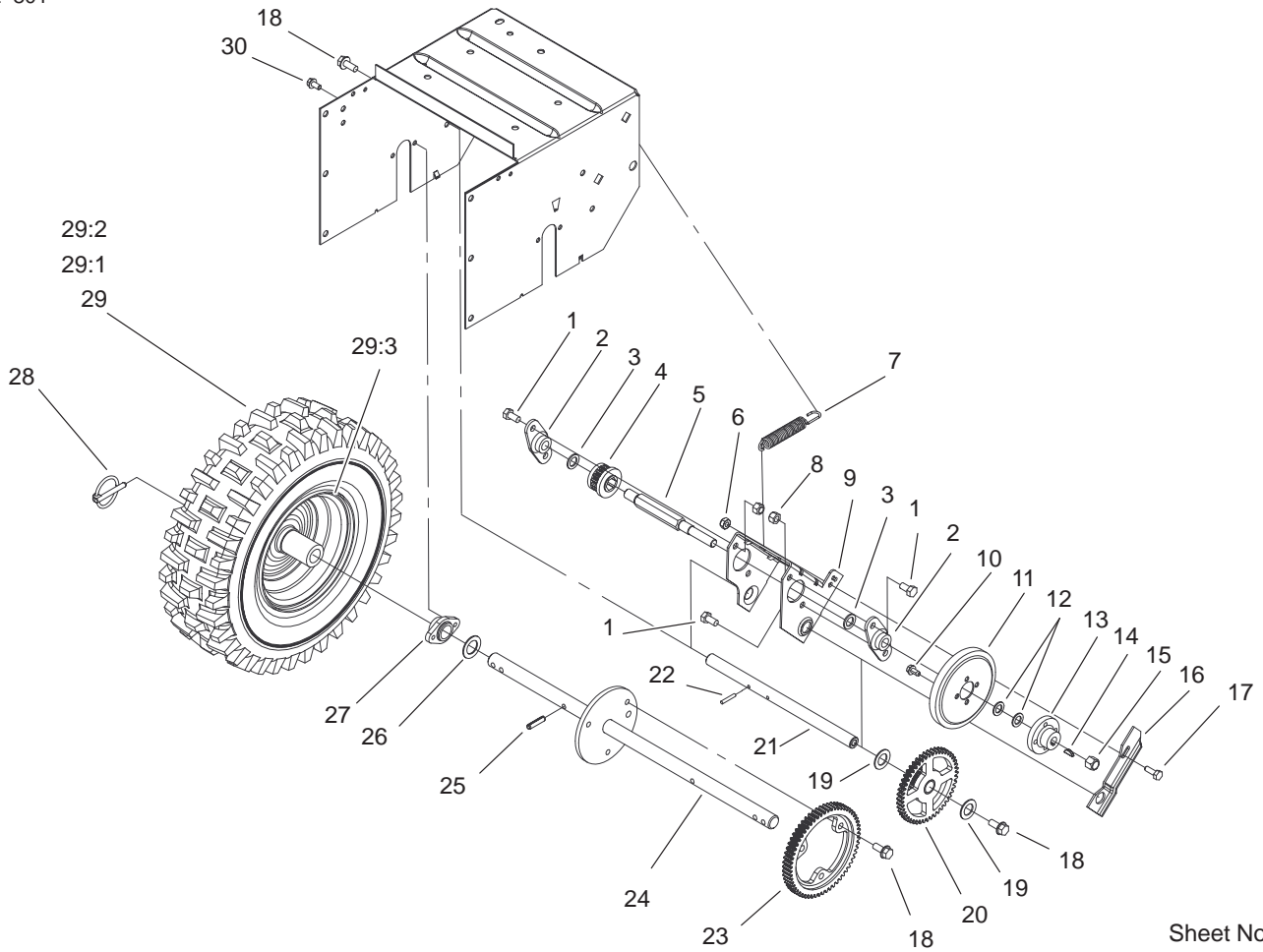


Sheet No.:3

Traction Assembly

| Ref. No. | Part No. | Qty. | Description |
|----------|------------|------|-----------------------------|
| 1 | 32144-70 | 2 | Screw-HH |
| 3 | 37-8900-01 | 1 | Frame-Traction |
| 4 | 3296-29 | 2 | Nut-Lock |
| 5 | 38-0800 | 1 | Plate-Friction |
| 6 | 38-7820 | 1 | Bearing-Ball |
| 7 | 88-0560 | 1 | Hub-Frame, Traction |
| 8 | 256-322 | 1 | Bushing |
| 9 | 37-8870 | 1 | Spring-Plate,Friction |
| 10 | 88-0550-03 | 1 | Frame-Front |
| 11 | 252-80 | 1 | Bearing-Thrust |
| 12 | 32151-103 | 1 | Ring-Snap |
| 13 | 88-0850 | 1 | Pulley & Drive ASM |
| 14 | 12-3270 | 4 | Screw |
| 15 | 37-8770 | 2 | Bolt-Shoulder |
| 16 | 37-9070 | 1 | Bracket-Mount Clutch, Rear |
| 17 | 40-6511-03 | 1 | Rod-Clutch, Auger |
| 18 | 42-3560 | 1 | Bolt-Shoulder |
| 19 | 66-8060 | 1 | Pad-Brake |
| 20 | 66-6790 | 1 | Bracket-Mount Clutch, Front |
| 21 | 3256-24 | 1 | Washer-Flat |
| 22 | 3290-320 | 1 | Retainer-Push On |
| 23 | 3-4244 | 1 | Pulley-Idler |
| 24 | 3296-59 | 1 | Nut-Lock Ni |
| 25 | 3296-56 | 1 | Nut-Lock Ni |

| Ref. No. | Part No. | Qty. | Description |
|----------|----------|------|-------------|
| 26 | 323-29 | 1 | Screw-HH |
| 27 | 53-7570 | 1 | Spring |

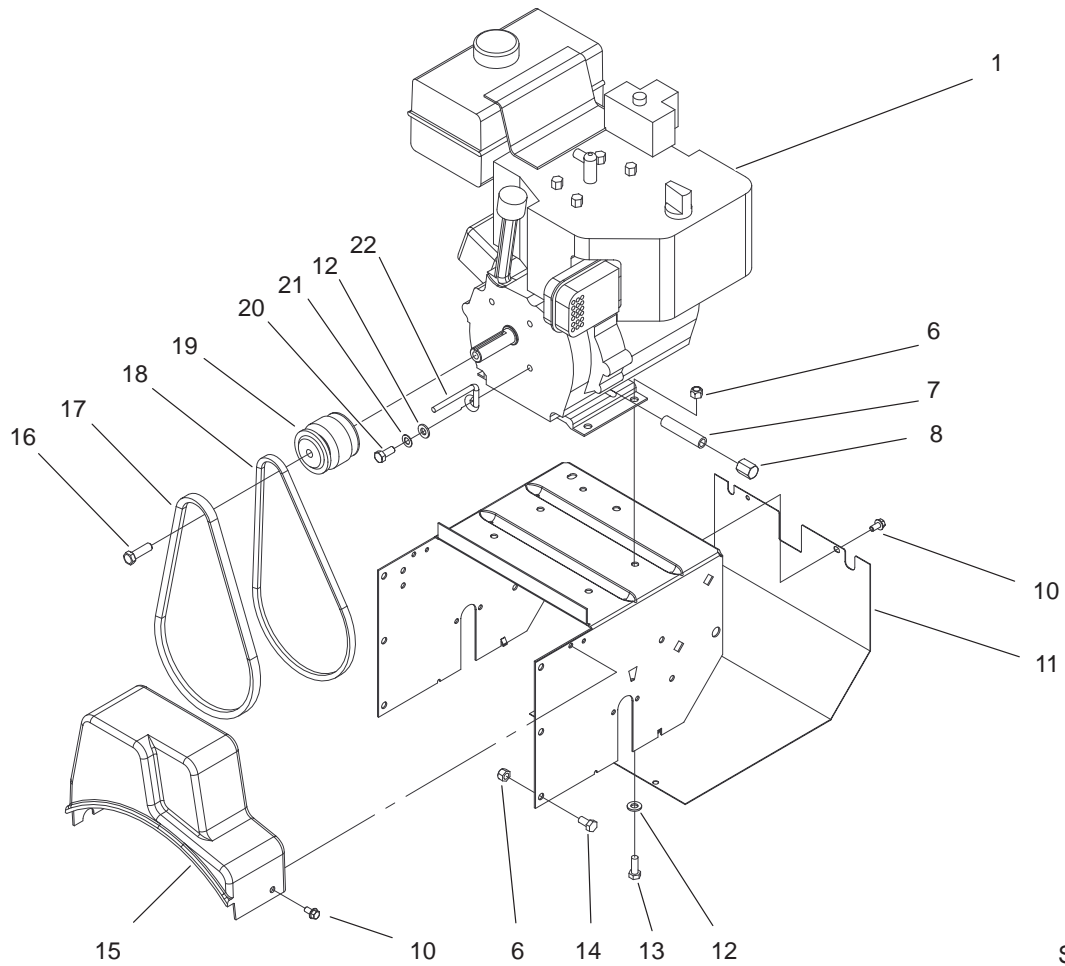


Sheet No.:4

Traction Assembly (Continued)

| Ref. No. | Part No. | Qty. | Description |
|----------|----------|------|-------------------------|
| 1 | 322-2 | 4 | Screw-HH |
| 2 | 20-1620 | 2 | Bearing-Wheel, Friction |
| 3 | 5-7570 | 2 | Washer-Flat |
| 4 | 37-6500 | 1 | Pinion |
| 5 | 37-6780 | 1 | Shaft-Wheel, Friction |
| 6 | 3296-16 | 1 | Nut-Lock |
| 7 | 37-8880 | 1 | Spring-Traction |
| 8 | 3296-29 | 4 | Nut-Lock |
| 9 | 39-1230 | 1 | Bracket-Sliding |
| 10 | 12-3270 | 4 | Screw |
| 11 | 37-6570 | 1 | Wheel-Friction |
| 12 | 36-4790 | 2 | Washer-Thrust |
| 13 | 39-1520 | 1 | Hub-Wheel, Friction |
| 14 | 3257-24 | 1 | Key-Woodruff |
| 15 | 3296-48 | 1 | Nut-Lock Ni |
| 16 | 39-1250 | 1 | Cam-Receiver |
| 17 | 321-4 | 1 | Screw-HH |
| 18 | 32144-70 | 5 | Screw-HH |
| 19 | 10-9280 | 2 | Washer-Special |
| 20 | 37-9160 | 1 | Int. Gear/Bushing ASM |
| 21 | 37-6760 | 1 | Shaft-Pivot |
| 22 | 32121-45 | 2 | Pin-Spring |
| 23 | 37-6520 | 1 | Gear-Axle |
| 24 | 74-1350 | 1 | Shaft-Axle |
| 25 | 32121-31 | 2 | Pin-Spring |

| Ref. No. | Part No. | Qty. | Description |
|----------|----------|------|--------------------|
| 26 | 3-8664 | 2 | Washer-Thrust |
| 27 | 37-6850 | 2 | Bearing-Axle |
| 28 | 3290-243 | 2 | Pin-Lynch |
| 29 | 67-9221 | 2 | Wheel And Tire ASM |
| 29:1 | 231-120 | 1 | Tire |
| 29:2 | 232-46 | 1 | Tube |
| 29:3 | 241-131 | 1 | Rim-Wheel |
| 30 | 32144-4 | 4 | Screw-HH |

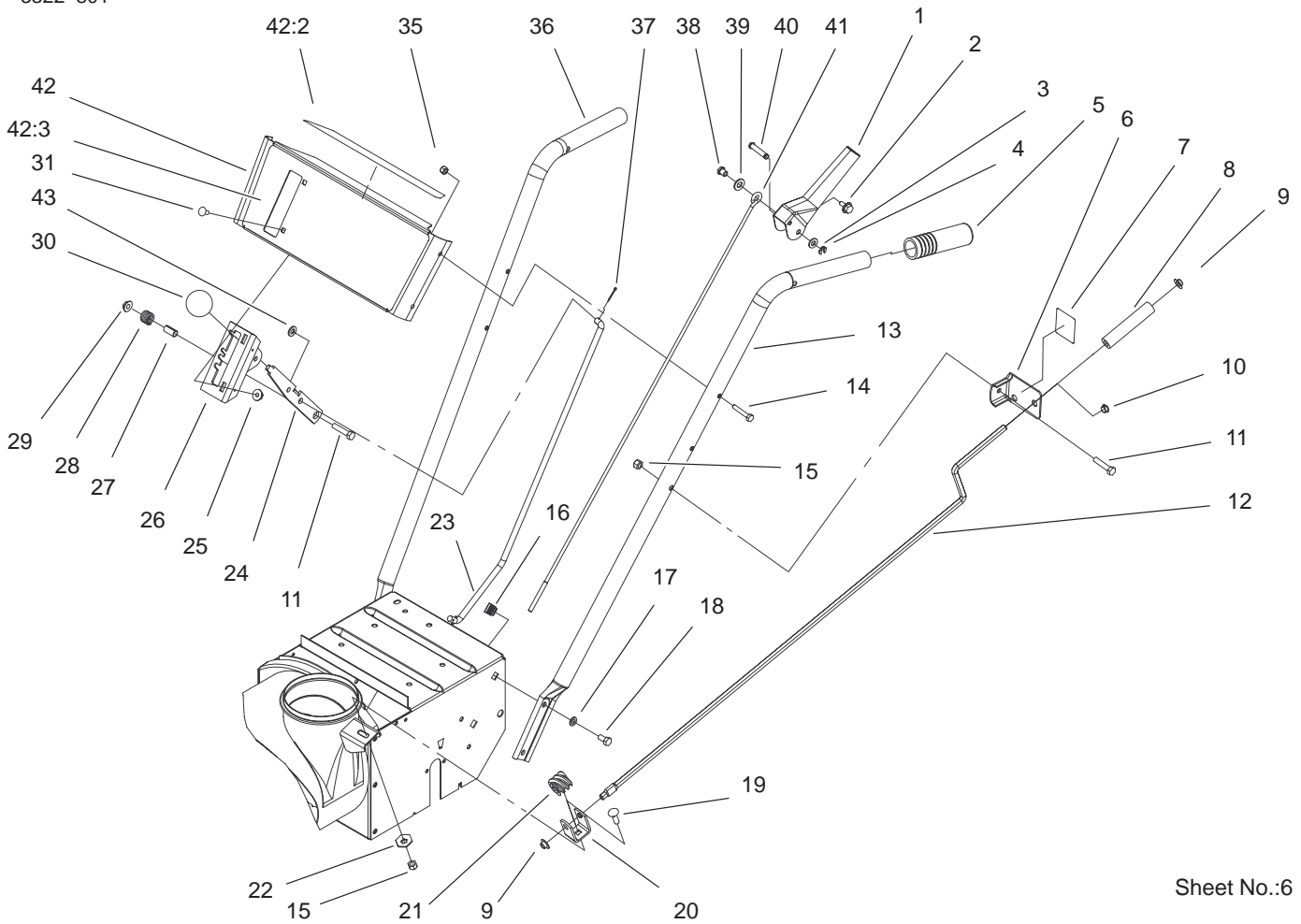


Sheet No.: 5

Engine Assembly

| Ref. No. | Part No. | Qty. | Description | Ref. No. | Part No. | Qty. | Description |
|----------|------------|------|--|----------|----------|------|-------------|
| ‡1 | | 1 | Engine-5hp, Tecumseh Hssk50-67401s | | | | |
| 6 | 3296-29 | 10 | Nut-Lock | | | | |
| 7 | 49-3040 | 1 | Pipe-Nipple | | | | |
| 8 | 281-7 | 1 | Cap-Pipe | | | | |
| 10 | 32144-4 | 6 | Screw-HH | | | | |
| 11 | 37-6830-01 | 1 | Cover-Traction, Lower | | | | |
| 12 | 3256-23 | 5 | Washer-Flat | | | | |
| 13 | 322-7 | 4 | Screw-HH | | | | |
| 14 | 322-2 | 6 | Screw-HH | | | | |
| 15 | 37-6900 | 1 | Cover - Belt | | | | |
| 16 | 43-7290 | 1 | Screw-Special | | | | |
| 17 | 37-9080 | 1 | V-Belt | | | | |
| 18 | 37-9090 | 1 | V-Belt | | | | |
| 19 | 43-7370 | 1 | Pulley-Engine | | | | |
| 20 | 3210-3 | 1 | Screw-HH | | | | |
| 21 | 3255-8 | 1 | Washer-Lock/Ext | | | | |
| 22 | 37-8990 | 1 | Retainer-Belt | | | | |

‡ Obtain locally.



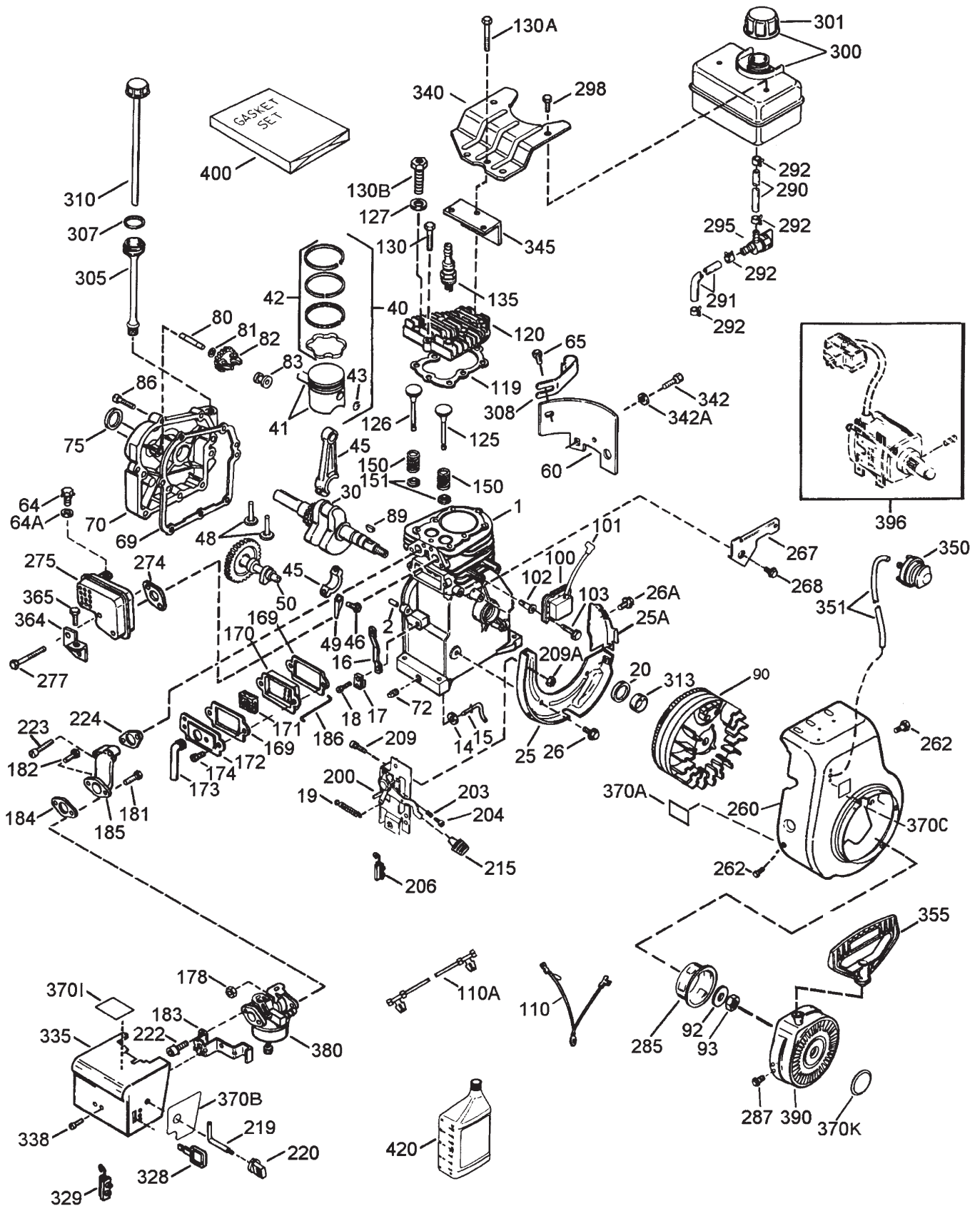
Sheet No.:6

Handle Assembly

| Ref. No. | Part No. | Qty. | Description |
|----------|------------|------|----------------------------|
| 1 | 63-3640 | 2 | Handle-Control |
| 2 | 3234-13 | 2 | Screw-HHF |
| 3 | 3256-23 | 2 | Washer-Flat |
| 4 | 32151-73 | 2 | Ring-Clip |
| 5 | 74-1360 | 2 | Grip-Handle |
| 6 | 25-6090 | 1 | Bracket-Rod, Chute |
| 7 | 63-3510 | 1 | Decal - Chute Direction |
| 8 | 40-8230 | 1 | Grip-Chute Control |
| 9 | 3290-320 | 2 | Retainer-Push On |
| 10 | 256-249 | 1 | Bushing |
| 11 | 322-7 | 2 | Screw-HH |
| 12 | 40-8270 | 1 | Rod-Control, Chute |
| 13 | 52-5571-03 | 1 | Handle-Left |
| 14 | 321-9 | 4 | Screw-HH |
| 15 | 3296-29 | 2 | Nut-Lock |
| 16 | 3290-196 | 4 | Nut |
| 17 | 3290-456 | 4 | Washer-Belleville |
| 18 | 322-2 | 4 | Screw-HH |
| 19 | 3230-22 | 1 | Screw-CARR |
| 20 | 40-8280 | 1 | Bracket-Worm |
| 21 | 40-8250 | 1 | Gear-Worm, Chute |
| 22 | 3290-238 | 1 | Washer-Lock |
| 23 | 39-7570 | 1 | Rod-Selector, Speed |
| 24 | 37-8820-03 | 1 | Selector-Speed |
| 25 | 32128-33 | 2 | Nut-HF |

| Ref. No. | Part No. | Qty. | Description |
|----------|------------|------|--------------------------|
| 26 | 39-1280-03 | 1 | Mount-Selector, Speed |
| 27 | 40-8130 | 1 | Spacer |
| 28 | 37-9150 | 1 | Spring |
| 29 | 32128-13 | 1 | Nut-Hex Flange |
| 30 | 233-21 | 1 | Knob |
| 31 | 3229-11 | 2 | Screw-CARR |
| 35 | 3296-42 | 4 | Nut-Lock |
| 36 | 52-5561-03 | 1 | Handle-Right |
| 37 | 3272-4 | 1 | Pin-Cotter |
| 38 | 47-4990 | 2 | Post-Linkage Mounting |
| 39 | 3256-24 | 2 | Washer-Flat |
| 40 | 52-5600 | 2 | Pin-Lever, Control |
| 41 | 52-5590 | 2 | Link-Upper |
| 42 | 100-3565 | 1 | Escutcheon Panel ASM |
| 42:2 | 99-3214 | 1 | Decal-Escutcheon Back |
| 42:3 | 100-3332 | 1 | Decal - Escutcheon |
| 43 | 3256-23 | 1 | Washer-Flat |

Engine Tecumseh Model HSSK50-67401S



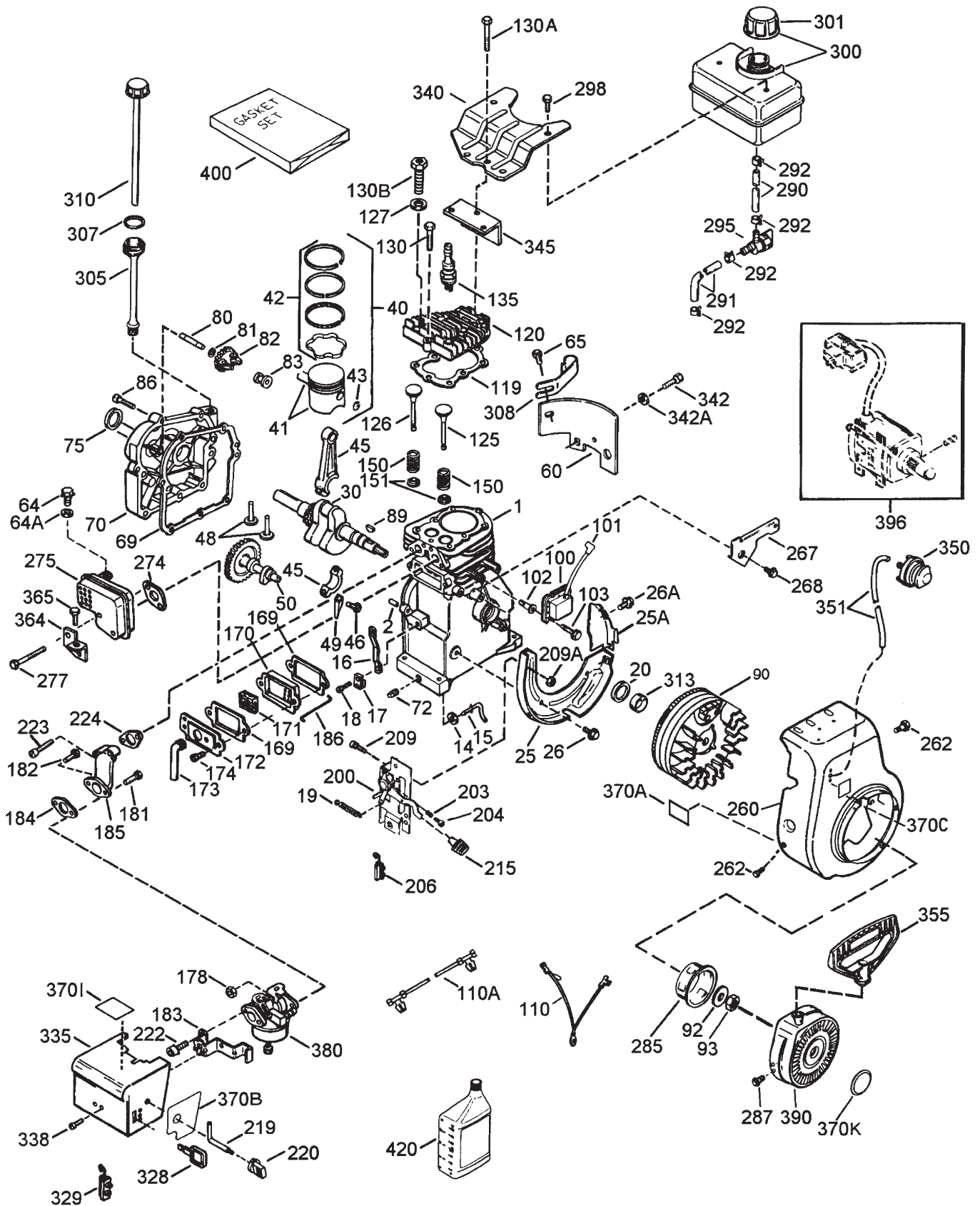
Engine Tecumseh Model HSSK50-67401S

| Ref. No. | Part No. | Qty. | Description | Ref. No. | Part No. | Qty. | Description |
|----------|----------|------|---|----------|----------|------|---|
| 1 | 36469A | 1 | Cylinder Assembly (Incl. Ref. #2, 20, 72 & 125) | 86 | 650488 | 7 | Screw – Hex Hd. |
| 2 | 26727 | 2 | Pin – Dowel | 89 | 610961 | 1 | Key– Flywheel |
| 14 | 28277 | 1 | Washer – Flat | 90 | 611199 | 1 | Flywheel – w/Ring Gear |
| 15 | 31334 | 1 | Rod – Governor | 92 | 650815 | 1 | Washer – Belleville |
| 16 | 31510 | 1 | Lever – Governor | 93 | 650816 | 1 | Nut – Flywheel |
| 17 | 31335 | 1 | Clamp – Governor Lever | 100 | 34443B | 1 | Solid State Assembly |
| 18 | 651018 | 1 | Screw – Torx | 101 | 610118 | 1 | Cover – Spark Plug |
| 19 | 31426 | 1 | Spring – Extension | 102 | 651024 | 2 | Stud |
| 20 | 32600 | 1 | Seal – Oil | 103 | 651007 | 2 | Screw – Torx |
| 25 | 36552 | 1 | Baffle – Blower Housing | 110 | 35182 | 1 | Wire – Ground |
| 25A | 35883 | 1 | Extension – Baffle | 110A | 36874 | 1 | Ground Wire |
| 26 | 650802 | 2 | Screw – Hex Washer Hd. | 119 | *36443 | 1 | Gasket – Cylinder Head |
| 26A | 650926 | 1 | Screw | 120 | 36441 | 1 | Head – Cylinder (Incl. Ref. #131) |
| 30 | 34740 | 1 | Crankshaft Assembly | 125 | 36471 | 1 | Valve – Exhaust Standard (Incl. Ref. #151) |
| 40 | 36073 | 1 | Piston – Pin & Ring Asm.. Standard | | 36472 | 1 | Valve – Exhaust 1/32” oversize (Incl. Ref. #151) |
| | 36074 | 1 | Piston – Pin & Ring Asm. .010” oversize | 126 | 32644A | 1 | Valve – Intake Standard (Incl. Ref. #151) |
| | 36075 | 1 | Piston – Pin & Ring Asm. .020” oversize | | 32645A | 1 | Valve – Intake 1/32” oversize (Incl. Ref. #151) |
| 41 | 36070 | 1 | Piston & Pin Asm.. Standard (Incl. Ref. #43) | 127 | 650691 | 1 | Washer – Flat |
| | 36071 | 1 | Piston & Pin Assembly .010” oversize (Incl. Ref. #43) | 130 | 6021A | 2 | Screw – Hex Flange Hd. |
| | 36072 | 1 | Piston & Pin Assembly .020” oversize (Incl. Ref. #43) | 130A | 650694A | 5 | Screw – Hex Flange Hd. |
| 42 | 36076 | 1 | Ring Set – Piston Std. | 130B | 650818 | 1 | Screw – Special |
| | 36077 | 1 | Ring Set – Piston .010” oversize | 135 | 35395 | 1 | Plug – Spark (Champion RJ-19LM or equivalent) |
| | 36078 | 1 | Ring Set – Piston .020” oversize | 150 | 31672 | 2 | Spring – Valve |
| 43 | 20381 | 2 | Ring – Piston Pin Retaining | 151 | 31673 | 2 | Cap – Valve Spring |
| 45 | 32875A | 1 | Connecting Rod Assembly (Incl. Ref. #46 & 49) | 169 | *27234A | 2 | Gasket – Valve Cover |
| 46 | 32610A | 2 | Bolt – Connecting Rod | 170 | 27666 | 1 | Body – Valve Cover |
| 48 | 27241 | 2 | Lifter – Valve | 171 | 31410 | 1 | Element – Valve Body |
| 49 | 32654 | 1 | Dipper – Oil | 172 | 34146 | 1 | Cover – Breather |
| 50 | 33158 | 1 | Camshaft | 173 | 35350 | 1 | Tube – Breather |
| 60 | 29745 | 1 | Extension – Blower | 174 | 650783 | 2 | Screw – Hex Hd. |
| 64 | 30063 | 1 | Screw – Hex Washer Hd. | 178 | 29752 | 2 | Nut & Lockwasher |
| 64A | 8345 | 1 | Washer – Flat | 181 | 650870 | 1 | Screw – Hex Hd. |
| 65 | 650128 | 1 | Screw – Hex Hd. | 182 | 6201 | 1 | Screw – Hex Hd. |
| 69 | *27677A | 1 | Gasket – Cylinder Cover | 183 | 34583A | 1 | Bracket – Choke |
| 70 | 34674C | 1 | Cover – Cylinder (Incl. Ref. #75 & 80) | 184 | *26756 | 1 | Gasket – Carburetor |
| 72 | 27642 | 2 | Plug – Pipe | 185 | 33691 | 1 | Pipe – Intake |
| 75 | 27897 | 1 | Seal – Oil | 186 | 32698 | 1 | Link – Governor to Throttle |
| 80 | 30574A | 1 | Shaft – Governor | 200 | 36677 | 1 | Control Assembly (Incl. Ref.# 203, 204, 206, 209 & 209A) |
| 81 | 30590A | 1 | Washer – Flat | 203 | 31342 | 1 | Spring – Compression |
| 82 | 30591 | 1 | Gear – Governor (Incl. Ref. #81) | 204 | 651029 | 1 | Screw – Fil. Hd. |
| 83 | 30588A | 1 | Spool – Governor | 206 | 610973 | 1 | Terminal Assembly |
| | | | | 209 | 650139 | 2 | Screw |
| | | | | 209A | 30322 | 2 | Lock Nut |
| | | | | 215 | 35440 | 1 | Knob – Speed Control |
| | | | | 219 | 34582 | 1 | Rod – Choke |
| | | | | 220 | 35438 | 1 | Knob – Choke Control |
| | | | | 222 | 28820 | 2 | Screw – Fil. Hd. |
| | | | | 223 | 650664 | 2 | Screw – Fil Hd. |
| | | | | 224 | *33673A | 1 | Gasket – Intake |

Note: Order individual parts from your local Tecumseh dealer.

* Indicated Parts included in Gasket Set Ref.#400

Engine Tecumseh Model HSSK50-67401S

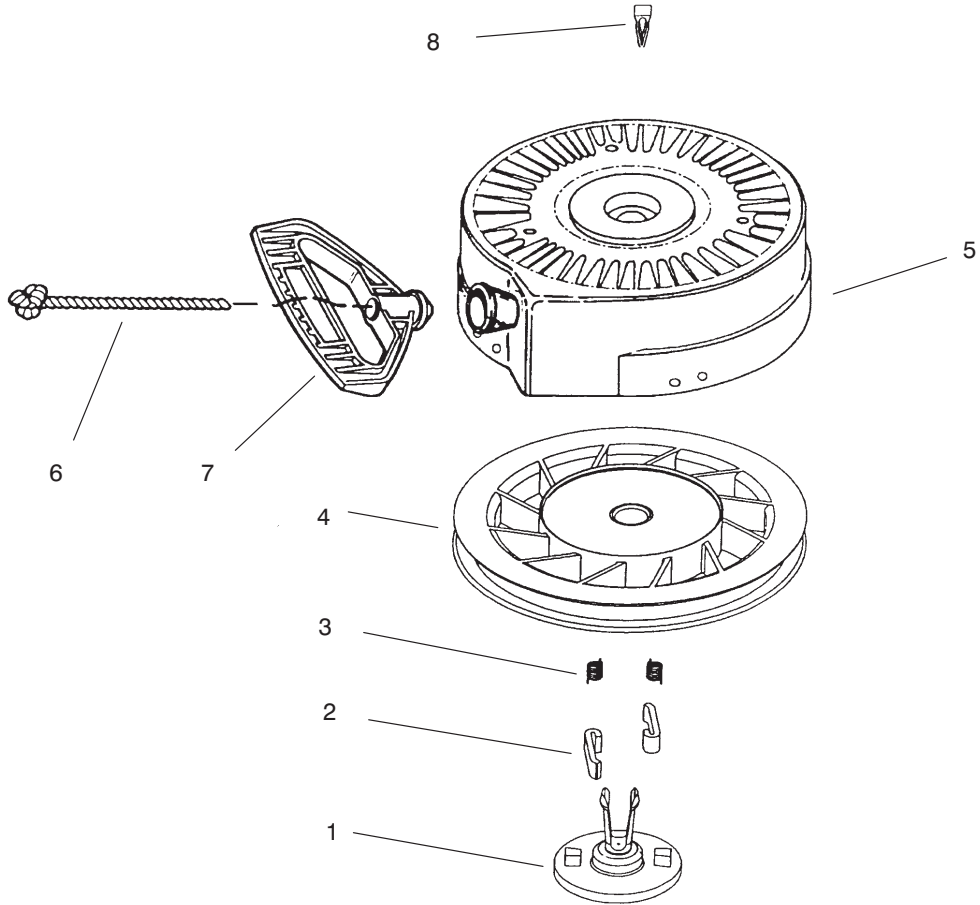


Engine Tecumseh Model HSSK50-67401S (Continued)

| Ref. No. | Part No. | Qty. | Description | Ref. No. | Part No. | Qty. | Description |
|----------|----------|------|--|----------|----------|------|-------------|
| 260 | 35656A | 1 | Housing – Blower | | | | |
| 262 | 650737 | 2 | Screw – Hex Hd. | | | | |
| 267 | 34212 | 1 | Bracket – Hold Down | | | | |
| 268 | 30200 | 1 | Screw – Hex WashersHd. | | | | |
| 274 | *33670A | 1 | Gasket – Exhaust | | | | |
| 275 | 35771 | 1 | Muffler (Incl. Ref.# 274) | | | | |
| 277 | 650327 | 2 | Screw – Fil. Hd. | | | | |
| 285 | 36467A | 1 | Cup – Starter | | | | |
| 287 | 650926 | 2 | Screw – Hex Washer Hd. | | | | |
| 290 | 30705 | 1 | Line – Fuel | | | | |
| 291 | 29774 | 1 | Line – Fuel | | | | |
| 292 | 26460 | 4 | Clamp – Fuel Line | | | | |
| 295 | 35857 | 1 | Valve – Shut-Off | | | | |
| 298 | 650665 | 2 | Screw – Hex Washer Hd. | | | | |
| 300 | 35584 | 1 | Tank Assembly – Fuel (Incl. Ref. #292 & 301) | | | | |
| 301 | 36246 | 1 | Cap – Fuel Tank | | | | |
| 305 | 35554 | 1 | Tube Asm.. – Oil Fill | | | | |
| 307 | 35499 | 1 | ”O” Ring | | | | |
| 308 | 35539 | 1 | Clip – Oil Fill | | | | |
| 310 | 35556 | 1 | Dipstick | | | | |
| 313 | 34080 | 1 | Spacer – Flywheel Key | | | | |
| 328 | 35062 | 2 | Ignition Key | | | | |
| 329 | 610973 | 1 | Terminal | | | | |
| 335 | 35072 | 1 | Cover – Carburetor | | | | |
| 338 | 650257 | 2 | Screw – Pan Hd. | | | | |
| 340 | 36247 | 1 | Plate – Fuel Tank | | | | |
| 342 | 30063 | 1 | Screw w/Belleville Washer | | | | |
| 342A | 650675 | 1 | Washer – Flat | | | | |
| 345 | 33344 | 1 | Baffle – Heat | | | | |
| 350 | 570682A | 1 | Primer Assembly | | | | |
| 351 | 32180C | 1 | Line – Primer | | | | |
| 355 | 590574 | 1 | Handle – Starter | | | | |
| 364 | 33333 | 1 | Carburetor Cover Bracket | | | | |
| 365 | 650735 | 1 | Screw | | | | |
| 370A | 36261 | 1 | Decal – Lubrication | | | | |
| 370B | 35282 | 1 | Control Decal | | | | |
| 370C | 36501 | 1 | Primer Decal | | | | |
| 370I | 37119 | 1 | Warning Decal | | | | |
| 370K | 36695 | 1 | Starter Decal | | | | |
| 380 | 640084A | 1 | Carburetor (Incl. Ref. #184) | | | | |
| 390 | 590742 | 1 | Starter – Rewind | | | | |
| 396 | 33290E | 1 | Electric Starter Kit (110 V) (Optional) | | | | |
| 400 | 36444 | 1 | Gasket Set (Incl. Parts Marked *) (26756 (1), 27234A (2), 27272A (1), 27677A (1) 29673 (1), 36443 (1), 33670A (1), 33673A (1) | | | | |
| 420 | 730226 | 1 | Oil – 4 Cycle SAE 5W30 (Quart) | | | | |

Note: Order individual parts from your local Tecumseh dealer.

* Indicated Parts included in Gasket Set Ref.#400

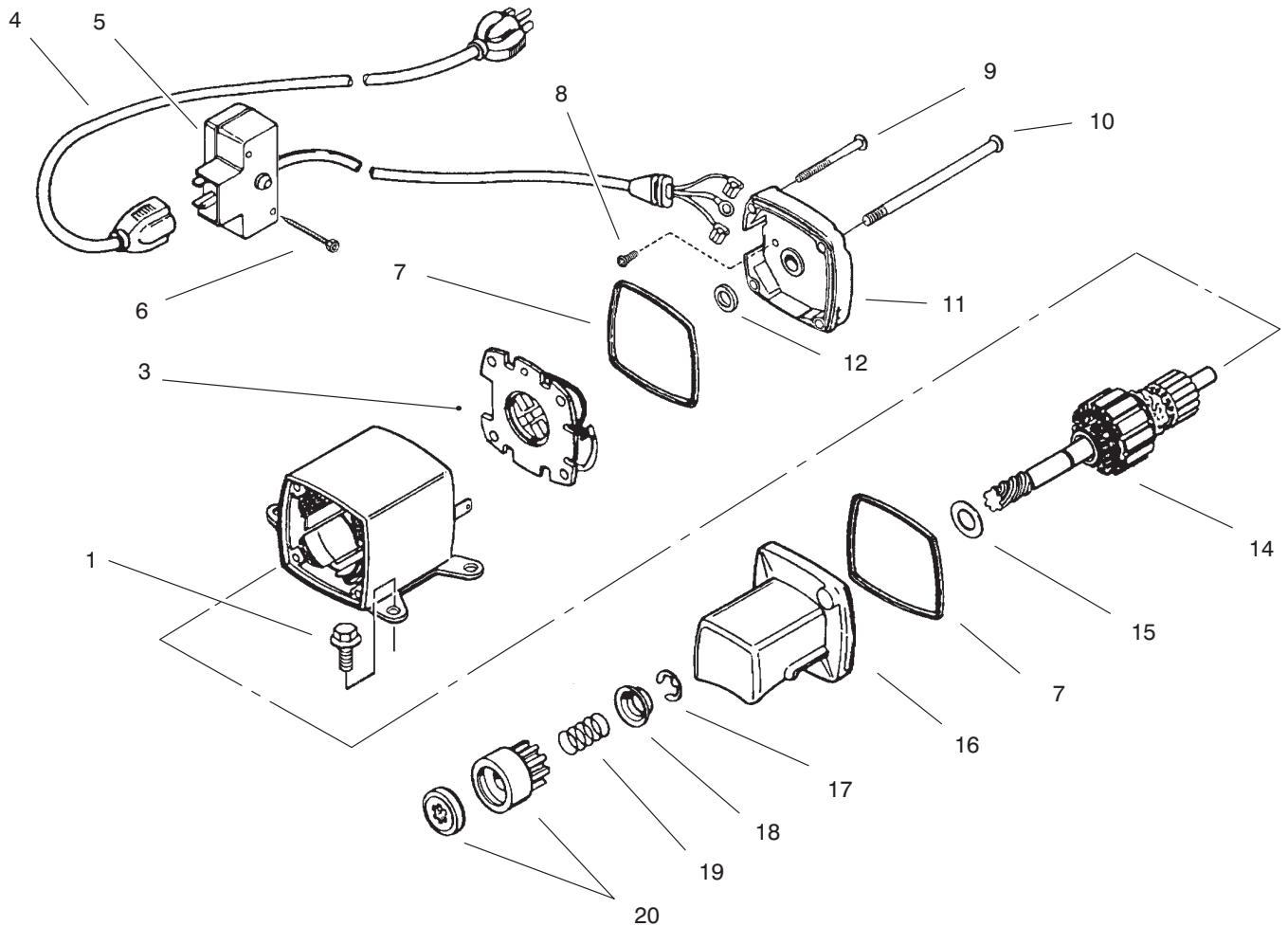


Rewind Starter No. 590742

| Ref. No. | Part No. | Qty. | Description |
|----------|----------|------|-----------------------------|
| 1 | 590740 | 1 | Retainer |
| 2 | 590616 | 2 | Starter Dog |
| 3 | 590617 | 2 | Dog Spring |
| 4 | 590645A | 1 | Pulley & Rewind Spring Asm. |
| 5 | 590647 | 1 | Starter Housing Asm. |
| 6 | 590535 | 1 | Starter Rope |
| 7 | 590574 | 1 | Mitten Grip Handle |
| 8 | 590741 | 1 | Locking Tab |

| Ref. No. | Part No. | Qty. | Description |
|----------|----------|------|-------------|
| | | | |

Note: Order individual parts from your local Tecumseh dealer.



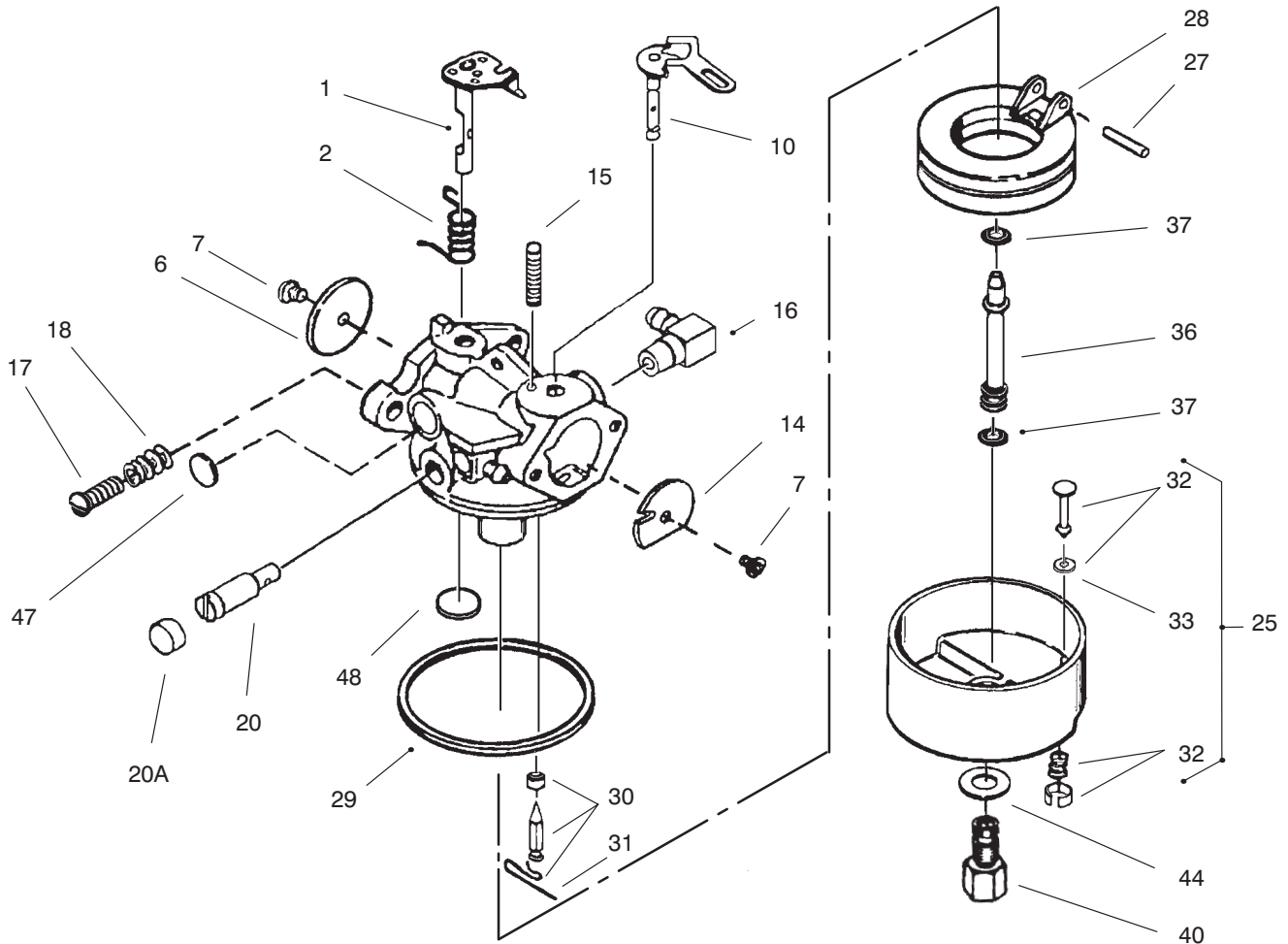
Starter Motor No. 33290E (Optional)

| Ref. No. | Part No. | Qty. | Description |
|----------|----------|------|--|
| 1 | 650759 | 3 | Screw – Torx |
| 3 | 35452A | 1 | Brush & Spring Card Asm |
| 4 | 32450B | 1 | Cord – Extension |
| 5 | 35454 | 1 | Switch Box Asm (Incl. Ref. # 6) |
| 6 | 650819 | 2 | Screw |
| 7 | 35450 | 2 | ”O” Ring |
| 8 | 33441 | 1 | Screw – Ground |
| 9 | 35456 | 1 | Scerw – Ground |
| 10 | 35462 | 2 | Bolt – Case |
| 11 | 35453 | 1 | Cap – Commutator End Asm (Incl. Ref. #7) |
| 12 | 590500 | 1 | Washer – Thrust |
| 14 | 35912 | 1 | Armature |
| 15 | 35911 | 1 | Washer – Thrust |
| 16 | 35461 | 1 | Cap – Drive End (Incl. Ref.# 7) |
| 17 | 31749 | 1 | Ring – Retainer |
| 18 | 33522 | 1 | Retainer – Spring |
| 19 | 33769 | 1 | Spring – Anti Drift |
| 20 | 33524 | 1 | Nut & Gear |
| * | 33290E | 1 | Starter – Electric (110 Volt) |

| Ref. No. | Part No. | Qty. | Description |
|----------|----------|------|-------------------|
| * | 730623 | 1 | Switch Repair Kit |

Note: Order individual parts from your local Tecumseh dealer.

* Not Illustrated



Carburetor No. 640084A

| Ref. No. | Part No. | Qty. | Description |
|----------|----------|------|--|
| 1 | 631615 | 1 | Shaft & Lever Assembly |
| 2 | 631767 | 1 | Throttle Shaft & Lever Asm. |
| 6 | 640070 | 1 | Throttle Shutter |
| 7 | 650506 | 2 | Screw - Shutter |
| 10 | 632108 | 1 | Choke Shaft & Throttle Asm. |
| 14 | 631890 | 1 | Shutter - Choke |
| 15 | 630735 | 1 | Spring - Choke Positioning |
| 16 | 631807 | 1 | Fuel Fitting |
| 17 | 651025 | 1 | Screw - Idle |
| 18 | 630766 | 1 | Spring - Tension |
| 20 | 640018 | 1 | Screw - Idle Restrictor |
| 20A | 640053 | 1 | Cap - Idle Restrictor Screw |
| 25 | 631951 | 1 | Float Bowl Asm. (Incl. Ref. # 32, 33) |
| 27 | 631024 | 1 | Shaft - Float |
| 28 | 632019 | 1 | Float |
| 29 | 631028 | 1 | ORing - Float Bowl |
| 30 | 631021 | 1 | Inlet Needle - Seat & Clip (Incl. Ref. # 31) |
| 31 | 631022 | 1 | Clip - Spring |
| 32 | 27136A | 1 | Bowl Drain Asm. |

| Ref. No. | Part No. | Qty. | Description |
|----------|----------|------|--------------------------------|
| 33 | 27554 | 1 | Gasket - Drain Plunger |
| 36 | 632745 | 1 | Main Nozzle Tube |
| 37 | 632547 | 2 | ORing - Main Nozzle Tube |
| 40 | 640131 | 1 | Nut - High Speed Bowl |
| 44 | 27110 | 1 | Bowl Nut Washer |
| 47 | 630748 | 1 | Welch Plug - Idle Mixture Well |
| 48 | 631027 | 1 | Welch Plug - Atmospheric Vent |
| * | 640084A | 1 | Carburetor (Incl. Ref. #1-48) |

Note: Order individual parts from your local Tecumseh dealer.

* Not Illustrated

