



Wheel Horse[®]

Lawn & Garden
42" Mower

Model No. 78231- 9900001 & Up

Parts Catalog

ORDERING REPLACEMENT PARTS

To order replacement parts, please supply: the part number, the quantity, and the description of each part desired.

Contents

Description	Page	Description	Page
Blade, Spindle And Pully Assembly	1		
Cutting Unit Assembly	2		
Cover Assembly	3	Note:	

Part Description Abbreviations

Part descriptions in this catalog may include the following abbreviations.

Abbreviation	Meaning	Abbreviation	Meaning
AR	as required	HWHTF	hex washer head thread forming
ASM	assembly	INC	incorporated
CARR	carriage	LH	left hand
DEG	degrees	PH	pan head
FH	flat head	PPH	Phillips pan head
GA	gauge	PTO	power take off
HF	hex flange	RH	right hand
HFW	hex flange washer	SFH	slotted fillister head
HH	hex head	SH	square head
HHF	hex head flange	SHWH	slotted hex washer head
HHST	hex head self tapping	SPH	slotted pan head
HJ	hex jam	STD	standard
HOC	height-of-cut	TAP	self tapping
HS	hex socket	TH	truss head
HSBH	hex socket button head	TTH	Torx truss head
HSFH	hex socket flat head	WH	wing head
HSH	hex socket head		
HWH	hex washer head		

Important Format Explanations

This catalog uses special formats to convey information in illustrations and parts lists. Specifically, one format is used in conjunction with service assemblies and another with quantities associated with reference numbers.

Service Assemblies

Parts within service assemblies have reference numbers in the form X:Y. X is the reference number of the service assembly and Y is a sequential number unique to each part within the service assembly.

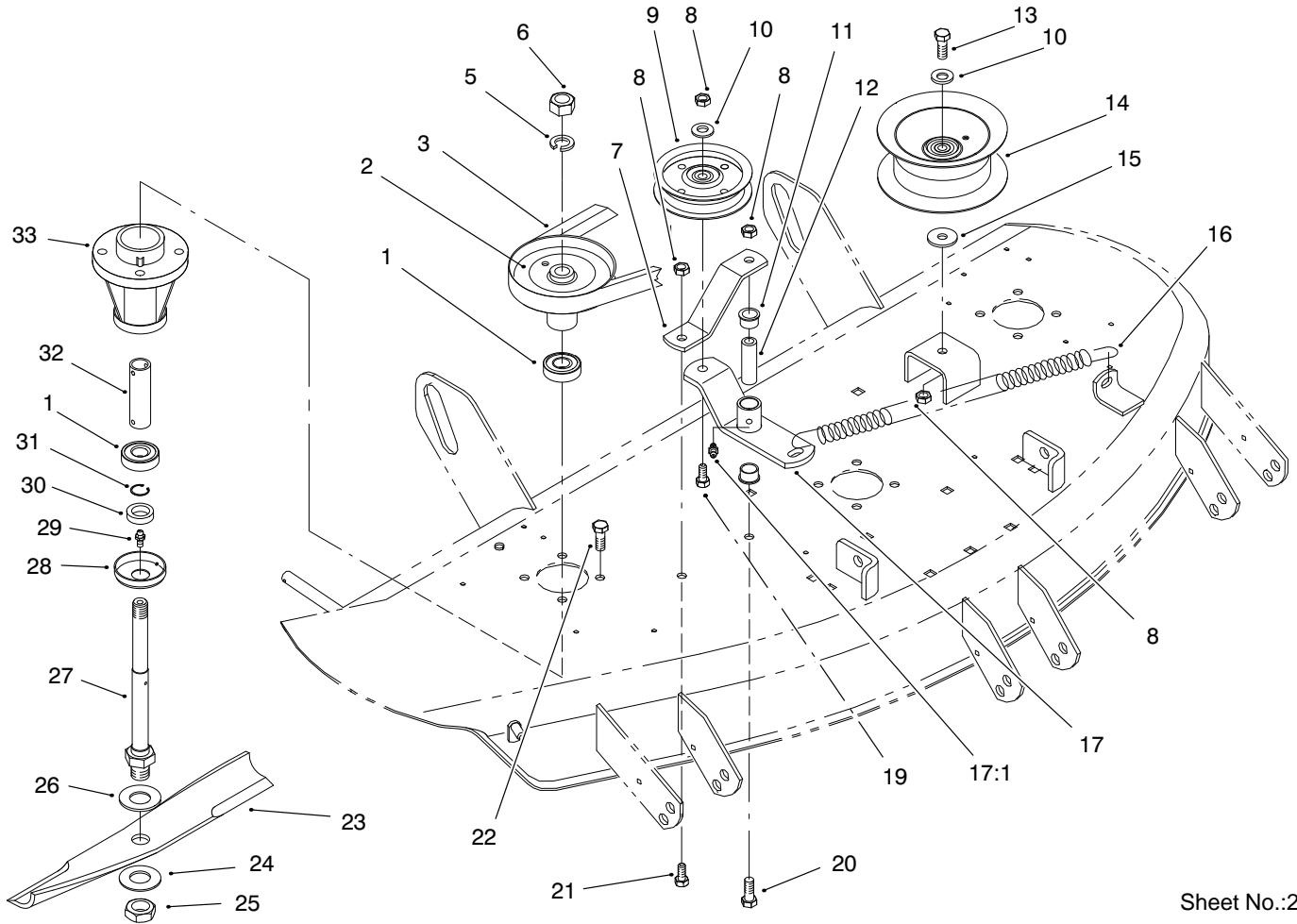
For example, a wheel assembly might be identified by reference number 6, the tire by 6:1, the valve by 6:2, and the wheel by 6:3. When you order the assembly identified by reference number 6, you receive all parts identified by reference numbers 6:1, 6:2, and 6:3. However, you may also order any part individually.

Reference numbers of this type appear in part lists and as callouts in illustrations.

Reference Numbers with Quantities

Illustrations may have a quantity in parentheses next to a reference number, in the form $X (Y)$. X is the reference number. Y in parentheses is the quantity of the part identified by the reference number.

For example, the illustration callout 4 (2) indicates that two parts are used in that instance.

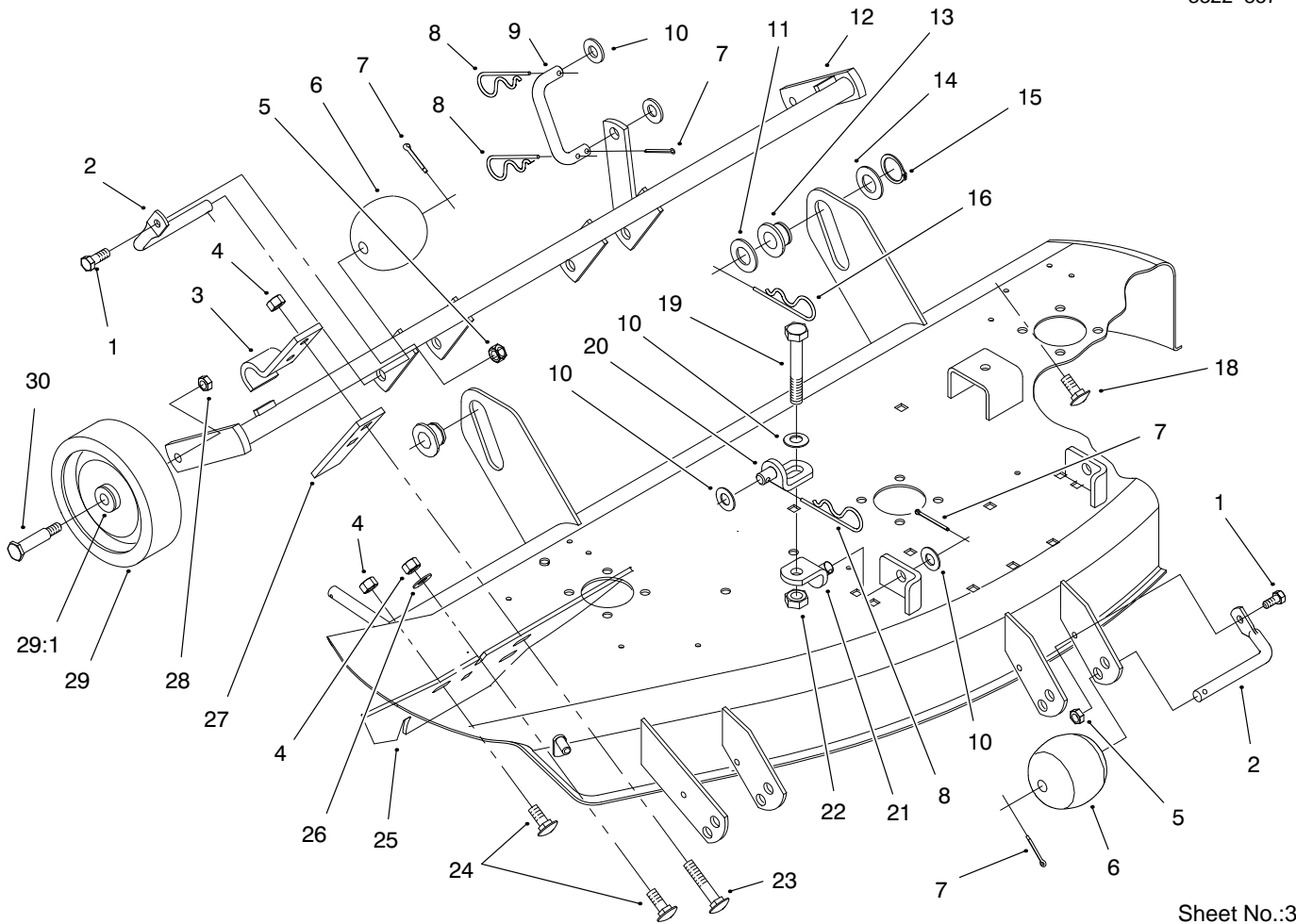


Sheet No.:2

Blade, Spindle And Pulley Assembly

Ref. No.	Part No.	Qty.	Description
1	109966	6	Bearing-Ball
2	92-7080	3	Pulley
3	92-6991	1	Belt - V
5	3253-8	3	Washer-Lock/Sp
6	3220-6	3	Nut-Jam
7	78-3140-03	1	Strap-Brace
8	3296-39	4	Nut-Lock Ni
9	92-7084	1	Pulley-Flat Idler
10	3256-24	2	Washer-Flat
11	109859	2	Bushing
12	79-2760	1	Spacer
13	323-11	1	Screw-HH
14	92-7082	1	Pulley - Idler
15	2844	1	Washer
16	116172	1	Spring - Extension
17	98-9006	1	Idler Arm w/Zerk
17:1	302-5	1	Fitting-Lube
19	323-9	1	Screw-HH
20	323-14	1	Screw-HH
21	323-6	1	Screw-HH
22	9080326	12	Screw-HH
23	106636	1	Blade Kit-42 Side
24	3256-28	3	Washer-Flat
25	3220-7	3	Nut-Jam
26	9202574	3	Washer
27	78-6710	3	Shaft-Spindle

Ref. No.	Part No.	Qty.	Description
28	106067	3	Cup-Spindle
29	302-5	3	Fitting-Lube
30	106068	3	Spacer-Blade
31	32120-42	3	Snap Ring-Int
32	116085	3	Tube
33	114568	3	Housing-Spindle



Sheet No.:3

Cutting Unit Assembly

Ref. No.	Part No.	Qty.	Description
1	321-4	5	Screw-HH
2	118960-03	5	Shaft-Roller
3	110837-03	2	Pivot-Bracket
4	3296-39	7	Nut-Lock Ni
5	3296-42	5	Nut-Lock Ni
6	29-4820	5	Roller
7	3272-21	7	Pin-Cotter
8	9335064	3	Hair Pin Cotter
9	78-6681	1	Link-Rear
10	3256-26	5	Washer-Flat
11	3256-28	2	Washer-Flat
12	79-4140-03	1	Support-Gage Wheel
13	78-7340	2	Roller-Lift
14	9202394	2	Washer
15	32151-29	2	Ring-External Snap
16	9335074	2	Pin-Cotter
18	3231-4	2	Screw-CARR
19	325-13	1	Screw-HH
20	86-9240	1	Bracket-Lift, Lower
21	86-9250	1	Bracket-Lift, Upper
22	3218-5	1	Nut-Jam
23	3231-5	2	Screw-CARR
24	3231-22	3	Screw-CARR
25	79-2831-03	1	Plate-Wear RH
26	3256-24	2	Washer-Flat
27	110838-03	2	Bar (Black)

Ref. No.	Part No.	Qty.	Description
28	32146-2	2	Nut-Lock Ni
29	110506	2	Wheel
29:1	5306	2	Bearing
30	5188	2	Bolt-Shoulder

