



Universal Swivel Auger Head

For Toro[®] Sitework[™] Systems

Model No. 22801—990001 and Up

Parts Catalog

Ordering Replacement Parts

To order replacement parts, please supply: the part number, the quantity, and the description of each part desired.

Understanding Reference Numbers

Each identified part in an illustration has a reference number. The reference number for a part also appears in the parts list, along with other information about the part.

This catalog uses two special reference number formats, one to indicate parts in a service assembly and another to indicate the quantity of a given part in an illustration.

Service Assembly Reference Numbers

Parts in service assemblies have reference numbers in the form **a:b**. The **a** represents the reference number of the entire service assembly and the **b** represents a sequential number unique to each part within the service assembly.

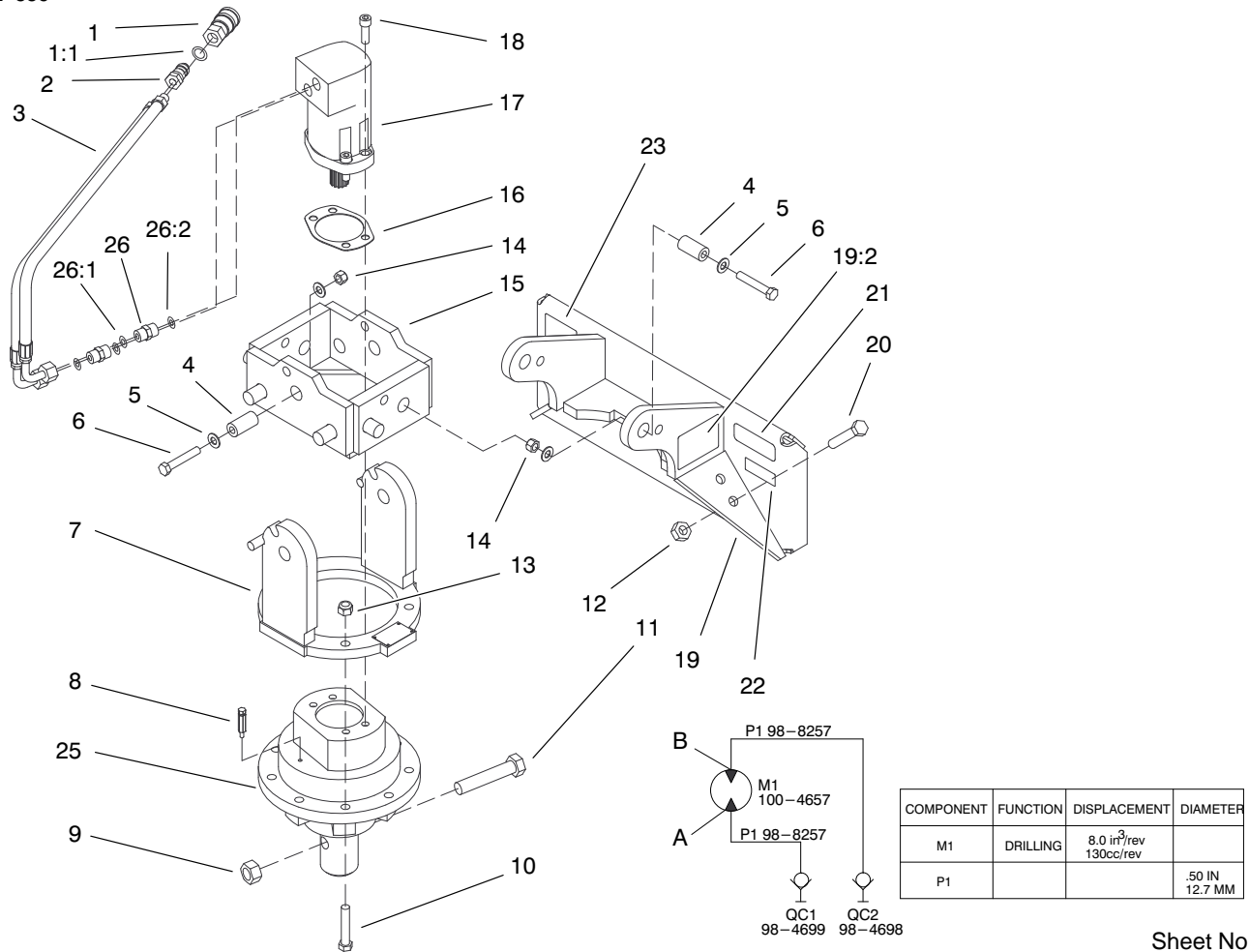
For example, a wheel assembly might be identified by reference number **6**, the tire by **6:1**, the valve by **6:2**, and the wheel by **6:3**. When you order the assembly identified by reference number **6**, you receive all parts identified by reference numbers **6:1**, **6:2**, and **6:3**. However, you may also order any part individually.

Reference numbers of this type appear in illustrations and in part lists.

Reference Numbers Indicating Quantity

In an illustration, if a reference number indicates more than one part, the reference number has the form **nX y**. The **n** represents the quantity of the part, the **X** is the multiplication symbol, and the **y** represents the reference number.

For example, in an illustration, the reference number **2X 37** means that two of the parts identified by reference number **37** are indicated.



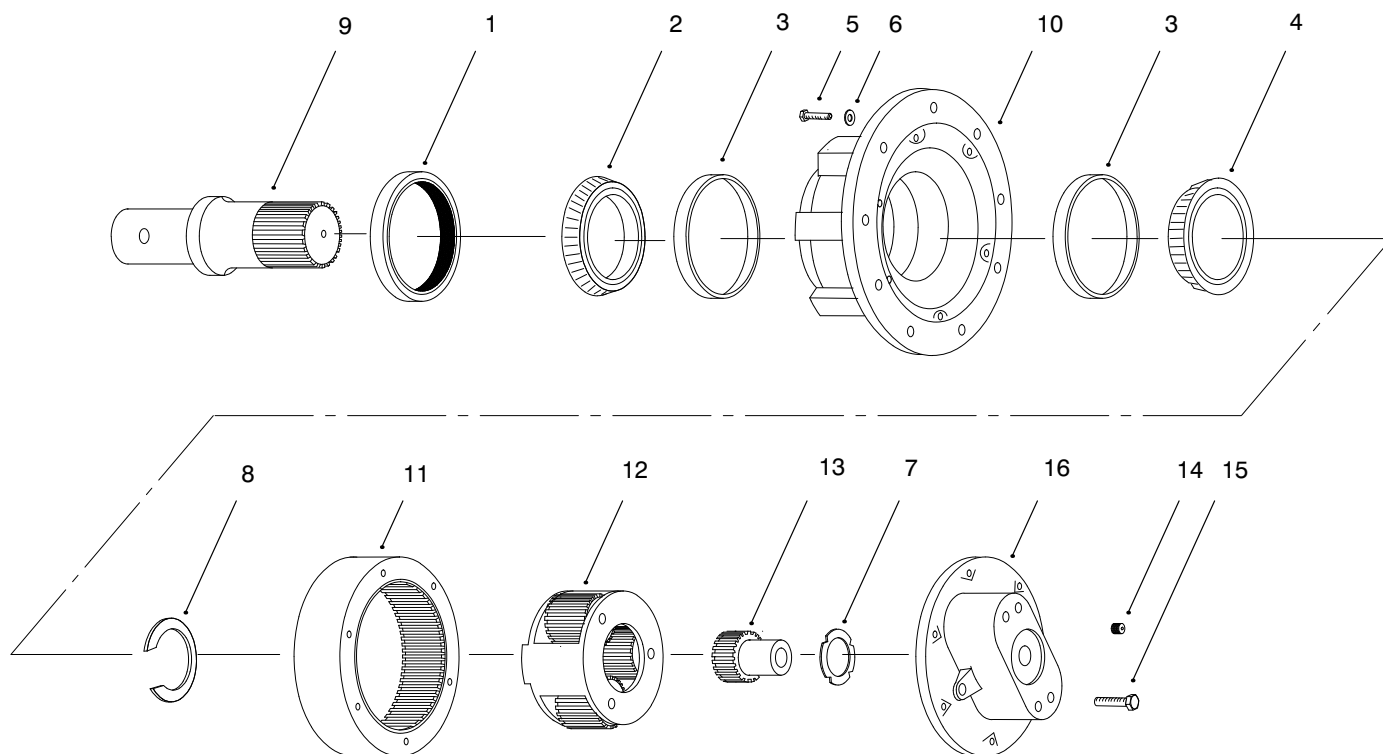
Sheet No.:2

Auger Head Assembly

Ref. No.	Part No.	Qty.	Description
1	98-4699	1	Female-Quick Disconnect
1:1	100-4165	1	Seal Kit-Hyd. Coupling
2	98-4698	1	Male-Quick Disconnect
3	98-8257	2	Hose - Hydraulic
4	99-1406	4	Pin - Pivot
5	3256-26	8	Washer-Flat
6	325-12	4	Screw-HH
7	98-8258	1	Housing - Drive
8	98-8261	1	Breather ASM
9	3217-15	1	Nut-Hex
10	326-1	4	Screw-HH
11	98-9062	1	Screw
12	3217-11	4	Nut-Hex
13	98-2703	4	Locknut
14	3296-23	4	Nut-Lock NI
15	100-4104	1	Swivel Gimbel ASM
16	99-5032	1	Gasket
17	100-4657	1	Motor - Hydraulic
*17:1	56-6890	1	Seal Kit
18	3274-4	4	Screw-HSH
19	100-4659	1	Auger Mount ASM
19:2	99-9942	2	Decal-Warning
20	327-14	4	Screw-HH

Ref. No.	Part No.	Qty.	Description
21	98-4683	1	Decal-Dingo Attachment
22	99-9992	1	Decal-Info
23	98-3269	1	Decal-Made In USA
25	98-8260	1	Drive-Gear, Planetary
26	340-6	2	Fitting-Straight
26:1	237-30	1	O-Ring
26:2	237-80	1	O-Ring

* Not Illustrated

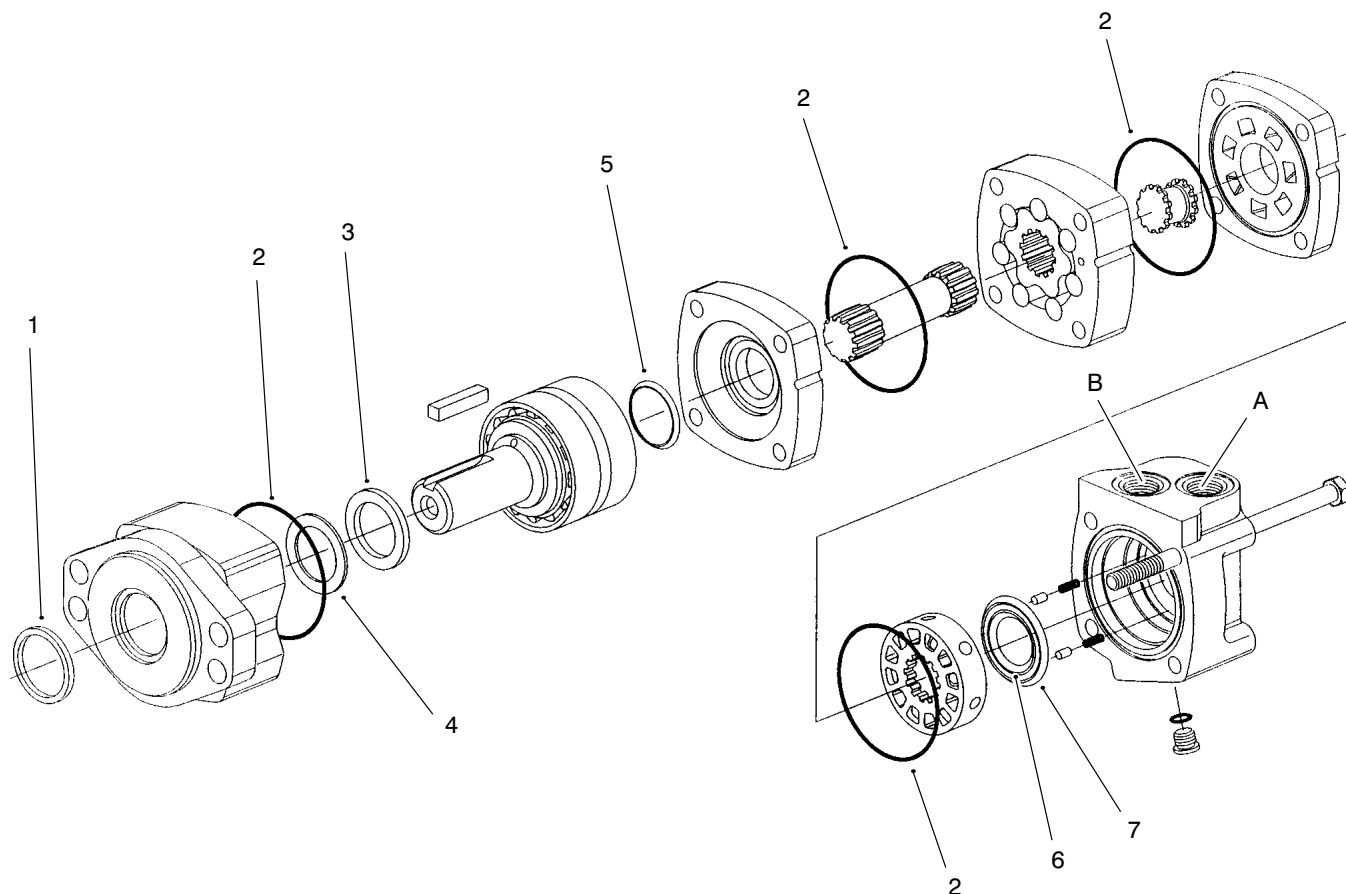


Sheet No.:A1
C-2745

Planetary Gear Assembly No. 98-8260

Ref. No.	Part No.	Qty.	Description
1	60-3830	1	Seal
2	60-3840	1	Cone
3	60-3850	2	Cup
4	60-3880	1	Cone
5	60-3890	6	Bolt
6	60-3910	6	Washer
7	60-3980	1	Washer
8	62-6450	1	Retaining Ring Kit
9	98-8264	1	Shaft – Output
10	98-8265	1	Hub w/Holes
11	98-8266	1	Gear – Ring
12	98-8267	1	Assembly – Carrier
13	98-8268	1	Gear – Sun
14	98-8269	1	Plug – Pipe, Magnetic
15	98-8270	8	Bolt
16	98-8271	1	Cover

Ref. No.	Part No.	Qty.	Description



C-2754

Hydraulic Motor Assembly

Ref. No.	Part No.	Qty.	Description
†1	56-6890	1	Seal-Dust
†2		4	Seal-O-Ring
†3		1	Seal-Shaft
†4		1	Back-up-Washer
†5		1	Seal-Shaft
†6		1	Seal-Inner
†7		1	Seal-Outer
*		1	Seal Kit (Incl. Ref# 1-7)

Ref. No.	Part No.	Qty.	Description

Not serviced separately

Not illustrated