



Vac-Bagger

**for 42 and 48 inch
GARDEN TRACTOR
SIDE DISCHARGE MOWERS**

Model No. 79301 – 7900001 & Up

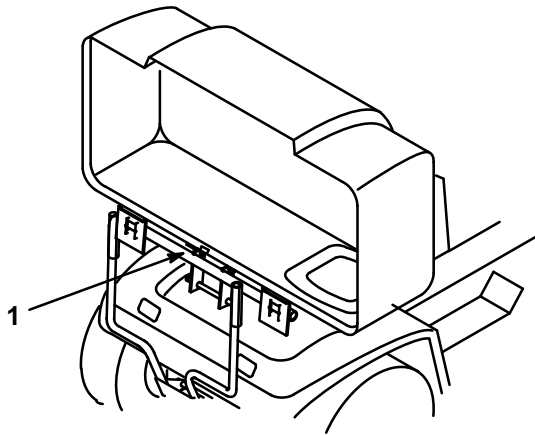
Operator's Manual

IMPORTANT: Read this manual carefully. It contains information about your safety and the safety of others. Also become familiar with the controls and their proper use before you operate the product.

Introduction

We want you to be completely satisfied with your new product, so feel free to contact your local Authorized Service Dealer for help with service, genuine replacement parts, or other information you may require.

Whenever you contact your Authorized Service Dealer or the factory, always know the model and serial numbers of your product. These numbers will help the Service Dealer or Service Representative provide exact information about your specific product. You will find the model and serial number plate located in a unique place on the product as shown below.



1. Model and Serial Number Plate

For your convenience, write the product model and serial number in the space below.

Model No: _____
Serial No. _____

The warning system in this manual identifies potential hazards and has special safety messages that help you and others avoid personal injury, even death. DANGER, WARNING and CAUTION are signal words used to identify the level of hazard. However, regardless of the hazard, be extremely careful.

DANGER signals an extreme hazard that will cause serious injury or death if the recommended precautions are not followed.

WARNING signals a hazard that may cause serious injury or death if the recommended precautions are not followed.

CAUTION signals a hazard that may cause minor or moderate injury if the recommended precautions are not followed.

Two other words are also used to highlight information. “Important” calls attention to special mechanical information and “Note” emphasizes general information worthy of special attention.

The left and right side of the machine is determined by sitting on the seat in the normal operator’s position.

Contents

	Page		Page
Safety and Instruction Decals	2	Maintenance	24
Assembly	3	Service Interval Chart	24
Loose Parts	3	Inspecting the Vac Bagger Attachment ...	25
Preliminary Preparation	5	Inspecting the Mower Blades	25
Preparing the Tractor	6	Caring for the Grass Bags	25
Preparing the Mower	6	Cleaning the Vac Bagger Attachment	25
Installing the Vac-Bagger	11	Storage	26
Removing the Bagger	16		
Operation	21		
Adjusting Height-of-Cut	21		
Using the Full Bag Tester	21		
Emptying the Grass Bags	22		
Clearing Obstructions			
From Bagger	22		
Operating and Bagging Tips	22		

Safety and Instruction Decals



Safety decals and instructions are easily visible to the operator and are located near any area of potential danger. Replace any decal that is damaged or lost.

ON INSIDE BAGGER HINGE FRAME (Part No. 92-7113)



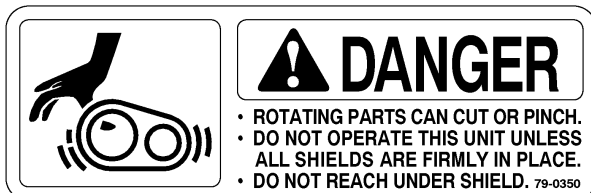
MOLDED INTO THE BELT COVER



MOLDED INTO THE BLOWER HOUSING AND BELT COVER



MOLDED INTO THE BELT COVER



ON THE INNER COVER (Part No. 92-7108)



Assembly

Loose Parts

Note: Use the chart below to identify parts used for assembly.

DESCRIPTION	QTY.	USE
Support bracket LH	1	Install bagger brackets to tractor
Support bracket RH	1	
Bolt 5/16–18 x 7/8" (22 mm)	4	
Lock nut 5/16"	4	
Leveler assembly	1	Install leveler assembly to mower
Grass baffle (1 hole–42" deck only)	1	Install grass baffle (42" deck only)
Carriage bolt 3/8–16 x 1" (25 mm)	1	
Lock nut 3/8"	1	
Grass baffle (2 holes–48" deck only)	1	Install grass baffle (48" deck, with s/n 7904082 and prior)
Carriage bolt 5/16–18 x 1" (25 mm)	2	
Lock nut 5/16"	2	
Double groove pulley	1	Install blower drive
Pivot support	1	Install blower pivot support to mower
Bolt 5/16–18 x 3/4" (19 mm)	1	
Flange nut 5/16"	1	

DESCRIPTION	QTY.	USE
Blower mounting plate	1	Assemble the blower
Blower assembly	1	
Carriage bolt 5/16–18 x 3/4" (19 mm)	3	
Flange nut 5/16"	3	
L–support bracket	1	
Carriage bolt 5/16–18 x 7/8" (22 mm)	1	
Washer 5/16"	1	
Flange nut 5/16"	1	
Spring	1	
Screw #10–32 x 3/4" (19 mm)	1	
Washer 7/32"	2	
Nut #10	2	
Latch (long–48" deck only)	1	
Latch (short–42" deck only)	1	
Bolt 1/4–20 x 3/4" (19 mm)	1	
Washer 1/4"	1	
Lock nut 1/4"	1	
Bagger Cover	1	Assemble the bagger
Indicator rod	1	
Handle	1	
Jam nut 1/4"	1	
Clips	2	
Pan head screw 1/4–20 x 5/8" (16 mm)	2	
Lock nut 1/4"	4	
Frame hinge assembly	1	
Discharge tube	1	Assemble knob to discharge chute
Knob	1	
Washer 7/32"	1	
Screw #10–24 x 5/8" (16 mm)	1	

DESCRIPTION	QTY.	USE
Belt cover (42" deck)	1	Install belt cover
Belt cover (48" deck)	1	
Belt cover bracket (42" deck)	1	
Belt cover bracket (48" deck)	1	
Flange head screw, 1/4–20 x 1/2" (13 mm)	5	
Flange head screw, 1/4–20 x 3/8" (10 mm)	3	
Blower belt cover	1	
Bolt 1/4–20 x 5/8" (16 mm)	2	
Lock nut 1/4"	2	
Spring	1	Install counterbalance spring
Chain	1	
Carriage bolt 5/16–18 x 1-1/4" (32 mm)	1	
Washer 5/16" (19 mm)	3	
Bagger mount	1	Install bags
Hairpin cotter	2	
Bag	2	
Operator's Manual	1	Read before operating

Preliminary Preparation

Park the tractor and mower on a level surface, disengage the blade control (PTO), set the parking brake, and turn the ignition key to "OFF" to stop the engine. Remove the ignition key.

Lower the mower to its lowest position and remove the mower from the tractor. Refer to Mower Operator's Manual for removal instructions.

Thoroughly clean the mower deck. All debris must be removed to ensure that parts will fit the mower properly.

Preparing the Tractor

Install Bagger Support Brackets

1. Remove (4) bolts and nuts from the rear of the tractor frame and discard (Fig. 1).
2. Mount the (2) support brackets against the tractor frame with (4) 5/16 x 7/8" (22 mm) bolts and 5/16" lock nuts (Fig 1). Place the wide bracket on the left side and narrow bracket on the right side.
3. Brackets can remain on the tractor even when the bagger attachment is not being used.

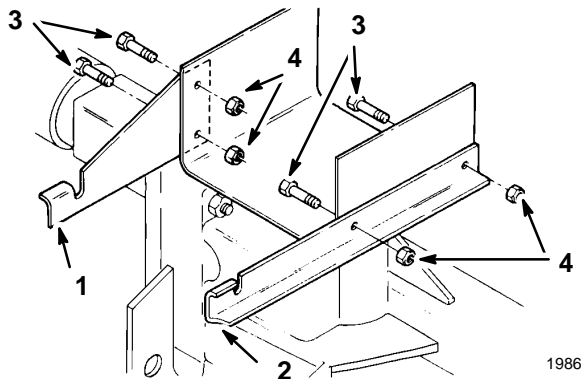


Figure 1

- | | |
|----------------------|--------------------|
| 1 Support bracket LH | 3 Bolt 5/16 x 7/8" |
| 2 Support bracket RH | 4 Lock nut 5/16" |

Note: Save all parts and hardware for use when using mower to side discharge.

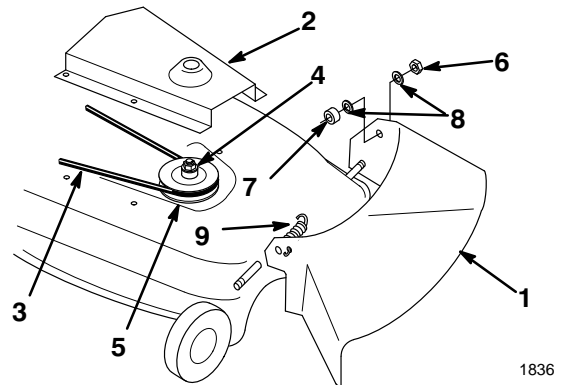


Figure 2

- | | |
|-----------------------|-------------------|
| 1 Discharge chute | 6 Jam nut, 3/8" |
| 2 Belt cover | 7 Rubber bushing |
| 3 Blade drive belt | 8 Plastic washers |
| 4 Nut and lock washer | 9 Torsion spring |
| 5 Single pulley | |

Install Leveling Bar

1. Remove the cotter pins securing the leveling assembly to the mower (Fig. 3). Remove hardware securing the front mounting bar to the right hand leveling bar (Fig. 3).
2. Remove the hardware securing the right bracket to mower deck and remove the leveler assembly (Fig. 3).
3. Replace the leveler assembly with new one furnished, containing three bars, and secure the right hand bracket to mower with previously removed hardware (Fig. 3).
4. Attach the front mounting bar to the right hand leveling bar with previously removed hardware and install cotter pins in leveling assembly (Fig. 3).

Preparing the Mower

Remove the Discharge Chute

1. Remove the discharge chute from the mower (Fig. 2).
2. Remove the belt cover from the right side (Fig. 2).

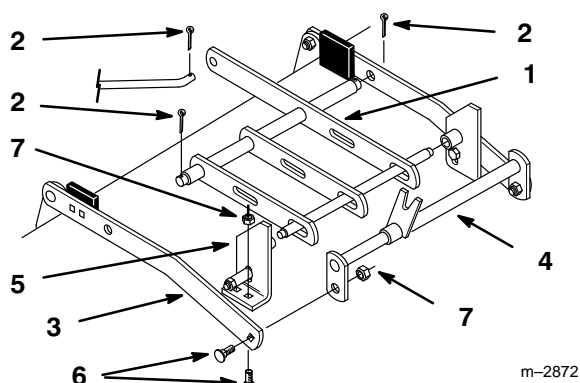


Figure 3

- | | |
|---------------------------|-----------------|
| 1 Leveling assembly | 5 Right bracket |
| 2 Cotter pin | 6 Bolt |
| 3 Right hand leveling bar | 7 Locknut |
| 4 Front mounting bar | |

Install Mower Baffle

Note: Not required on 48" decks with s/n 7904083 and up. Baffle is included with deck.

1. Remove the bolt(s) and nut(s) at the end of the grass plate inside the mower near the back edge of the discharge opening. Discard the hardware.
2. Select the appropriate grass baffle (42" deck, single hole or 48" deck, two holes). Install grass baffle tight against grass plate with top edge up against inside of mower deck.
3. On 42" decks, secure with a 3/8 x 1" (25mm) carriage bolt, 13/32" washer and 3/8" lock nut (Fig. 4).

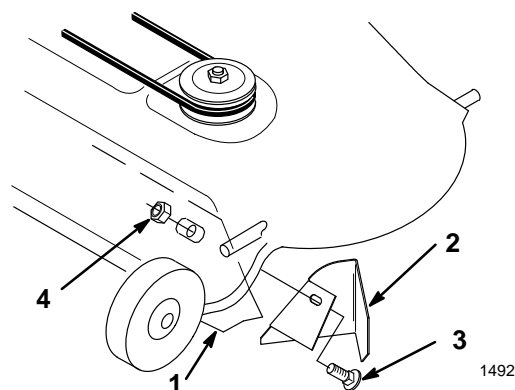


Figure 4

- | | |
|---------------|-----------------------------------|
| 1 Grass plate | 3 Carriage bolt, 3/8 x 1" (25 mm) |
| 2 42" Baffle | 4 Nut, 3/8" |

4. On 48" decks, secure with two 5/16 x 1" (25 mm) carriage bolts and 5/16" lock nuts (Fig. 5).

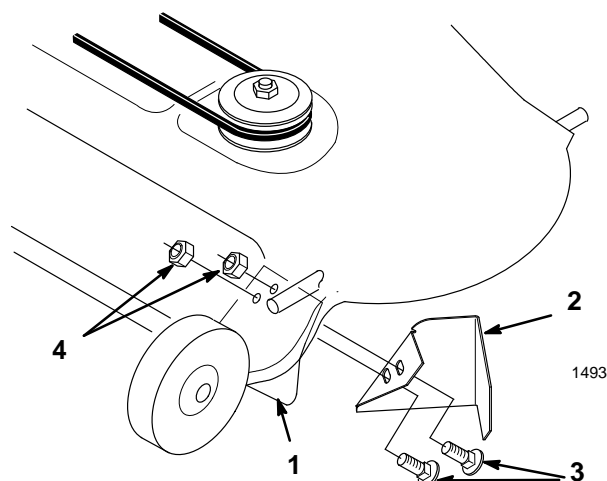


Figure 5

- | | |
|---------------|-----------------------------------|
| 1 Grass plate | 3 Carriage bolt 5/16 x 1" (25 mm) |
| 2 48" Baffle | 4 Nut 5/16" |

5. Rotate the blade and check for clearance with baffle. If necessary, adjust the baffle so blade does not hit.

Install the Blower Drive Pulley

1. Pull on mower idler assembly to release the belt tension and remove the blade drive belt from right side pulley (Fig. 6).
2. Remove nut and lock washer from right hand blade spindle (Fig. 6). Remove single pulley.

Note: Block blade with a piece of wood to stop it from turning while you remove the pulley nut. If blade slips hold hex portion of spindle above the blade with a wrench.

Note: When nut is removed the shaft is free to drop out of the spindle. Be sure to support the spindle and blade from the bottom side.

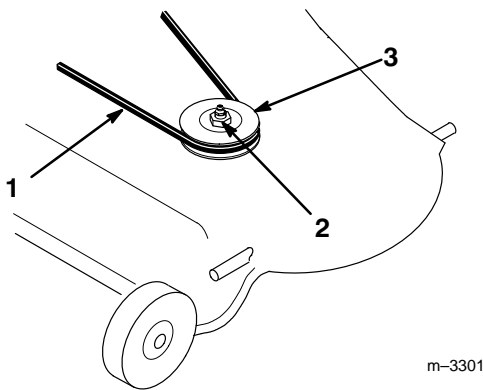


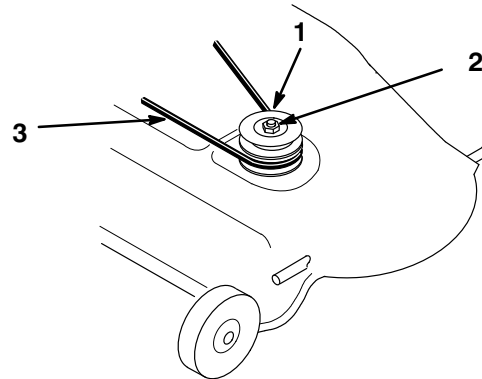
Figure 6

- | | |
|-----------------------|-----------------|
| 1 Blade drive belt | 3 Single pulley |
| 2 Nut and lock washer | |

3. Select proper diameter top double pulley 42" deck=3-1/4" and 48" deck=3-3/4". Slide the new double pulley onto the spindle shaft with the word "TOP", stamped into pulley, facing up. Secure with previously removed 5/8" lock washer and nut (Fig. 7).
4. Tighten the nut to 50–75 ft. lb. (68–101 Nm).

5. Reinstall the existing mower belt by rotating it onto the bottom pulley (Fig. 7).

Note: Check that the mower belt is properly located on idler and pulleys.



1837

Figure 7

- | | |
|-------------------------------------|----------------------------|
| 1 New double pulley
(note "TOP") | 2 Lock washer and nut 5/8" |
| 3 Mower belt | |

Install Blower Pivot Support

1. Select proper hole in the pivot support (42" deck=outside, 48" deck= inside) and slide it over the threaded stud welded to front of mower near discharge opening (Fig. 8).
2. Align pivot support parallel with front curved edge and tight against top of mower (Fig. 8). Clamp in this position.
3. Drill a 11/32" diameter hole in the top of the mower deck using the pivot support as a guide. Secure the pivot support to the mower with a 5/16 x 3/4" (19 mm) bolt, through from the underside of the mower, and a flange nut (Fig. 8). Place the 3/8" jam nut (removed from discharge chute) snug onto stud. Do not overtighten jam nut.

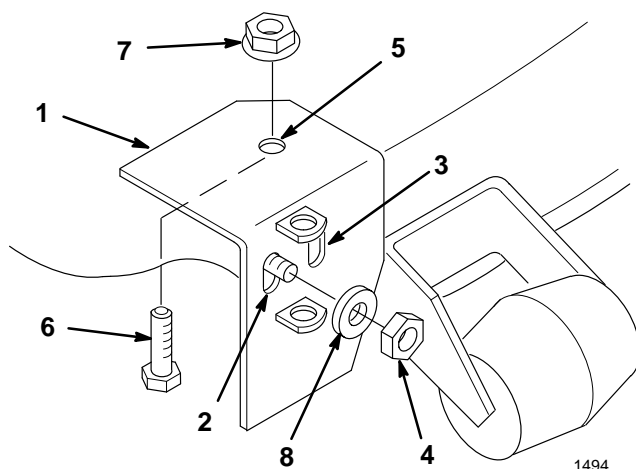


Figure 8

- | | |
|---|---|
| 1 Pivot support | 5 Drill 11/32 diameter hole |
| 2 Mounting hole 42" | 6 Bolt 5/16 x 3/4" (19 mm) |
| 3 Mounting hole 48" | 7 Flange nut 5/16" |
| 4 Jam nut 3/8" (removed from discharge chute) | 8 Plastic washer (removed from discharge chute) |

Assemble Blower

1. Assemble blower mounting plate to blower with (3) 5/16 x 3/4" (19 mm) carriage bolts and 5/16" flange nuts (Fig. 9).

2. In the front inside hole of the blower insert a 5/16 x 7/8" (22 mm) carriage head bolt, item 6 (Fig. 9).

Note: This carriage bolt must be installed down through the plate and blower for proper belt clearance.

3. Inside the blower housing, slide the L-bracket over the bolt. Hold the L-bracket tight against the blower housing wall and secure with 5/16" washer and 5/16" flange nut (Fig. 9).

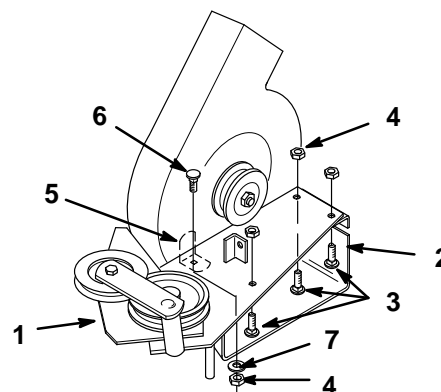


Figure 9

- | | |
|-------------------------------------|--|
| 1 Blower mounting plate | 5 L-bracket |
| 2 Blower assembly | 6 Carriage bolt 5/16 x 7/8" (22 mm)(down from top) |
| 3 Carriage bolt 5/16 x 3/4" (19 mm) | 7 Washer 5/16" |
| 4 Flange nut 5/16" | |

4. Install the long hook end of the tension spring and #10 nut onto a #10 x 3/4" (19 mm) screw. Thread the nut on within 1/8" from the head end of the screw, leaving enough room for the spring to rotate freely (Fig. 10).
5. Slide a #10 washer onto the screw and insert through the blower housing. Install a second #10 washer and #10 nut (Fig. 10). While holding the first nut, tighten the second so that the assembly is tight against the plastic housing.
6. Select the appropriate latch (42" deck–short, 48" deck–long) Hook the spring into the hole in the latch and mount the latch to the blower housing with a 1/4 x 3/4" (19 mm) bolt, 1/4" washer and 1/4" lock nut (Fig. 10). Leave the nut loose enough so that the latch pivots freely.

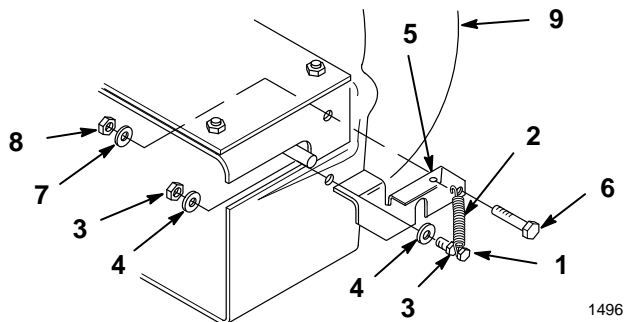


Figure 10

- | | |
|----------------------------|---------------------------|
| 1 Screw #10 x 3/4" (19 mm) | 6 Bolt 1/4 x 3/4" (19 mm) |
| 2 Spring | 7 Washer 1/4" |
| 3 Nut #10 | 8 Lock nut 1/4" |
| 4 Washer #10 | 9 Blower assembly |
| 5 Latch | |

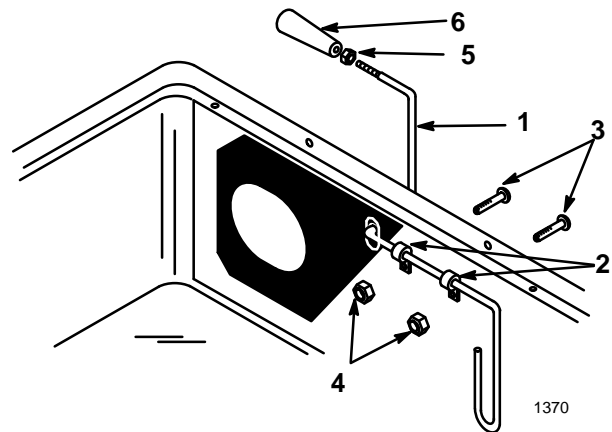


Figure 11

- | | |
|-----------------------------|-----------------|
| 1 Indicator rod | 4 Lock nut 1/4" |
| 2 Clips | 5 Jam nut 1/4" |
| 3 Pan head screw 1/4 x 5/8" | 6 Handle |

Assemble Bagger Cover

1. Slide the threaded end of indicator rod through (2) clips, then the rubber seal and slot in the cover (Fig. 11).
2. Secure the clips to the cover with (2) 1/4 x 5/8" (16 mm) pan head screws and 1/4" lock nuts (Fig. 11).
3. Thread the jam nut and handle completely onto the threaded end of the indicator rod. Rotate the handle so that the decal can be read from the operators position, then tighten the jam nut (Fig. 11).

4. Mount the frame hinge to the cover with the (2) 1/4" bolts attached to it. Secure with (2) 1/4" lock nuts (Fig. 12).

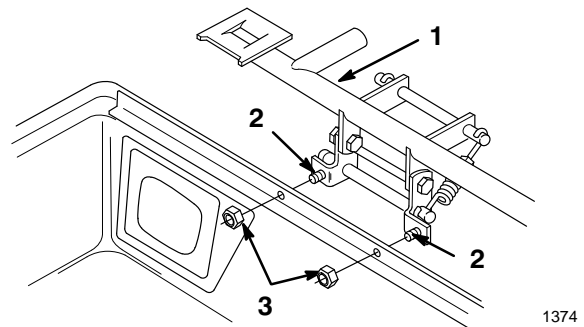


Figure 12

- | | |
|------------------------|-----------------|
| 1 Frame hinge | 3 Lock nut 1/4" |
| 2 Bolt 1/4" (attached) | |

Assemble Discharge Tube

1. Cut 2-3/4" (7 cm) off the bottom of the discharge tube (Fig. 13).
2. Attach the knob to the center hole in the discharge tube and secure with 1/4" washer and #10-24 x 5/8" (16 mm) screw (Fig. 13).

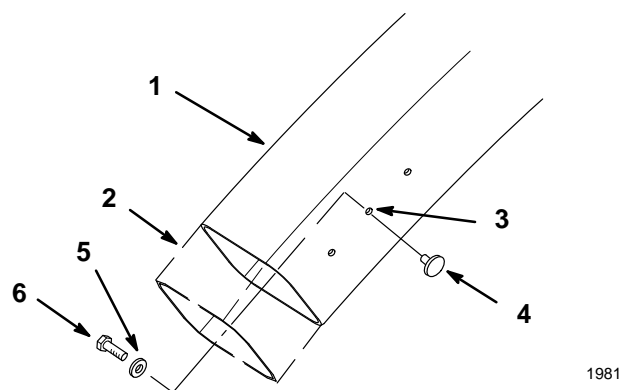


Figure 13

- | | |
|---------------------|-------------------------|
| 1 Discharge tube | 5 Washer 7/32" |
| 2 Cut 2-3/4" (7 cm) | 6 Screw , #10-24 x 5/8" |
| 3 Tube center hole | (16 mm) |
| 4 Knob | |

Installing the Vac-Bagger

Mount the Blower

1. Insert pivot pin on blower into pivot support bracket on mower (Fig. 14).

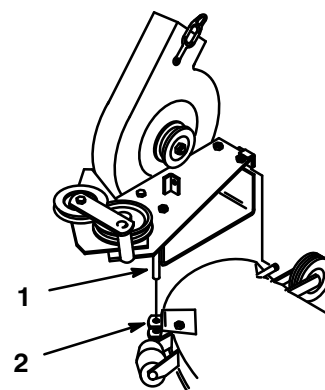


Figure 14

- | | |
|-------------|-------------------------|
| 1 Pivot pin | 2 Pivot support bracket |
|-------------|-------------------------|

2. With the blower swung out in the open position, install the blower drive belt between the idler pulley bracket and pulley. Then loop the belt around the remaining pulleys (Fig. 15). Install the other end of the belt over the blower drive pulley on the spindle.

Note: Use belt part number 79-7480 for 42" mowers and the belt part number 79-7490 for 48" mowers.

3. Check direction of blower rotation (Fig. 15).

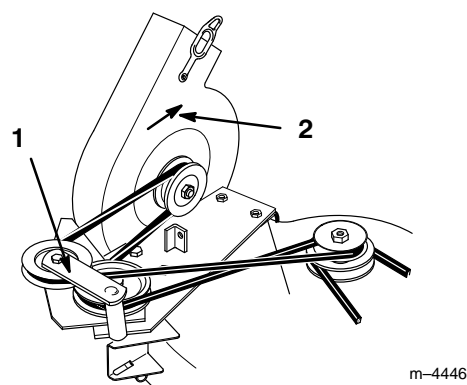


Figure 15

- | | |
|-----------------------------------|----------------------|
| 1 Idler pulley bracket and pulley | 2 Rotation direction |
|-----------------------------------|----------------------|

- With the belt installed, swing the blower toward the mower until the blower latch locks over the pin at the back of the mower (Fig. 16).

Note: If blower cannot be latched on 42" mowers because of interference between mower and blower housing, cut housing until blower closes and latches.

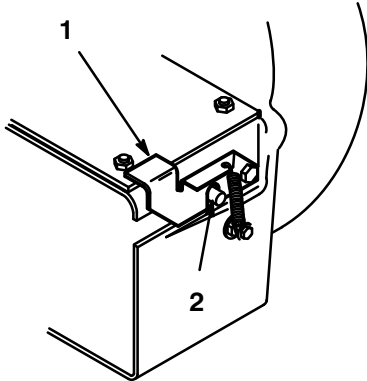


Figure 16

- 1 Blower latch 2 Pin

Install Belt Covers

- Two belt covers brackets are supplied (Fig. 17). The short, wide bracket is for 42" mowers. The long, narrow bracket is for 48" mowers.

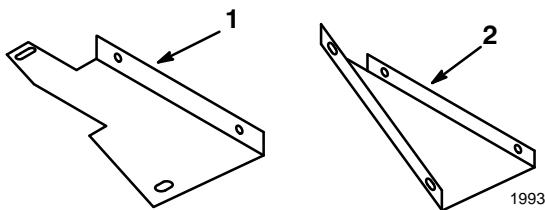


Figure 17

- 1 Belt cover bracket 42" 2 Belt cover bracket 48"

- On 42" mowers, mount the belt cover using (2) 1/4 x 1/2" (13 mm) thread forming flange screws in holes used by original cover (Fig. 18).

- On 48" mowers, mount the belt cover bracket to the front rib on the top of the mower using (2) 1/4 x 3/8" (10 mm) flange screws (Fig. 18).

Note: Center the screws in the slots of cover bracket before tightening. Do not use screws longer than 3/8" because belt interference could occur.

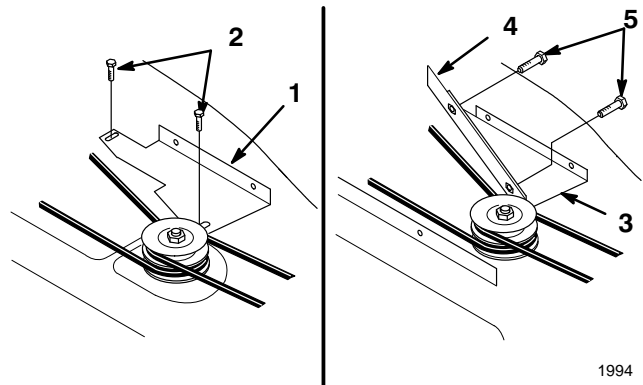


Figure 18

- | | |
|---|---|
| 1 Belt cover bracket 42" | 4 Rib |
| 2 Flange screws 1/4 x 1/2" thread forming | 5 Flange screws 1/4 x 3/8" thread forming |
| 3 Belt cover bracket 48" | |

- On 42" mowers, mount the belt cover loosely to the outside of the belt cover bracket using (3) 1/4 x 1/2" (13 mm) flange screws (Fig. 19).

Note: Do not tighten screws as adjustment must be made later.

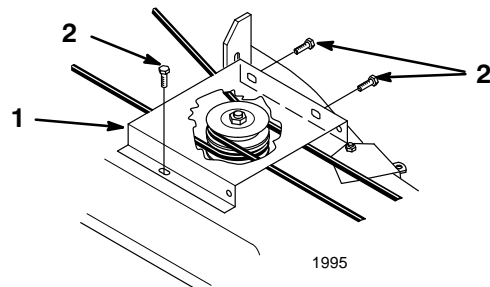


Figure 19

- | | |
|------------------|---|
| 1 Belt cover 42" | 2 Flange screws 1/4 x 1/2" thread forming |
|------------------|---|

- On 48" mowers, mount the belt cover loosely to the outside of the belt cover bracket using (2) 1/4 x 3/8" (10 mm) flange screws and to the rear rib using a 1/4 x 1/2" (13 mm) flange screw (Fig. 20).

Note: Do not tighten screws as adjustment must be made later.

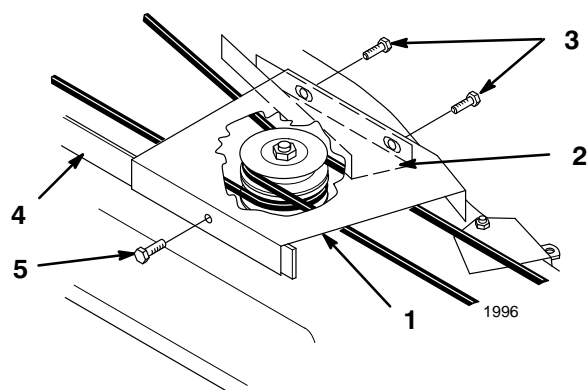


Figure 20

- | | |
|----------------------------|---------------------------|
| 1 Belt cover 48" | 4 Rib |
| 2 Belt cover bracket 48" | 5 Flange screw 1/4 x 1/2" |
| 3 Flange screws 1/4 x 3/8" | thread forming |

Install Blower Belt Cover

- Mount the blower belt cover to the deck belt cover using (2) 1/4 x 5/8" (16 mm) bolts and lock nuts (Fig. 21). Tighten the lock nuts slightly so that a light drag is felt on the belt cover when tilted upward. Cover must close freely when assembled.
- Adjust the blower belt cover so that it just touches blower by sliding the mower belt cover in the slots. Make sure that the blower belt cover pivots freely and closes properly. Tighten the mower belt cover mounting screws.

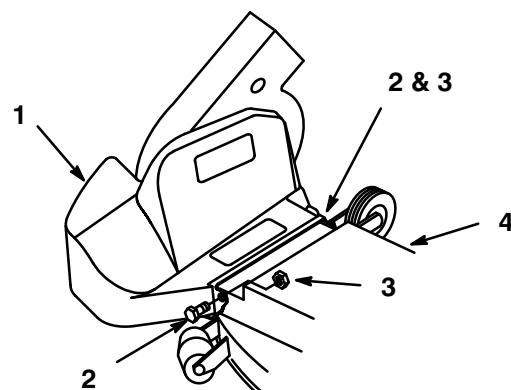


Figure 21

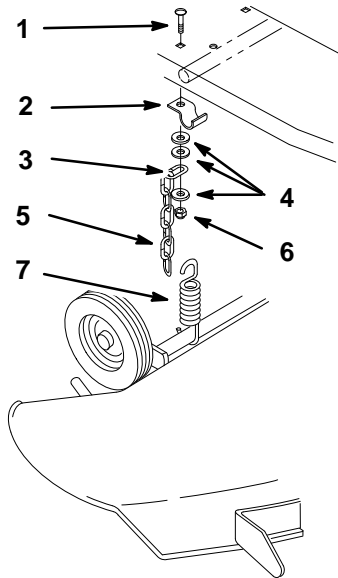
- | | |
|---------------------|--------------------|
| 1 Blower belt cover | 3 Lock nut 1/4" |
| 2 Bolt 1/4 x 5/8" | 4 Mower belt cover |

Reinstall Mower to Tractor

- Reinstall the mower to the tractor. Refer to "Installing the Mower" in the mower Operator Manual.

Attach Counterbalance Chain

- Remove existing nut and clip from the bolt on the outer right rear footrest support rod (Fig. 22).
- Replace existing carriage bolt with a longer 5/16 x 1-1/4" (32 mm) carriage bolt (Fig. 22).
- Place retaining clip and two 5/16" washers onto carriage bolt, then install a link on one end of the chain. Secure with third washer and existing nut (Fig. 22).
- Hook spring around gage wheel shaft at rear of mower (Fig. 22). Refer to Operation Section, "Adjusting Height-of-Cut" for recommended chain link setting.



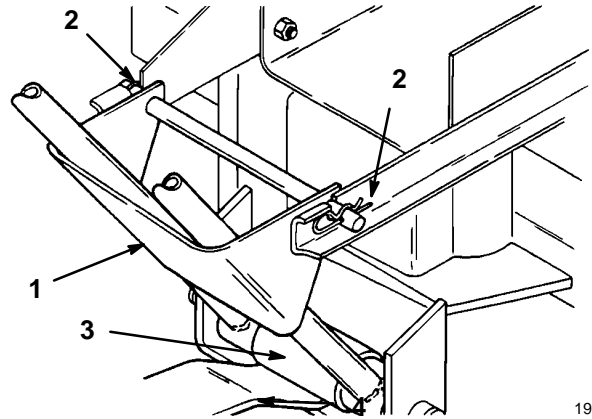
m-3109

Figure 22

- | | |
|--|------------------------|
| 1 Carriage bolt 5/16–18 x 1-1/4" (32 mm) | 4 Washer 5/16" (19 mm) |
| 2 Retaining clip | 5 Chain |
| 3 Mounting Link | 6 Nut (reuse existing) |
| | 7 Spring |

Install Bagger Assembly

1. Lower the quick-attach bracket into the notches in the support brackets on the tractor frame and onto the drawbar hitch (Fig. 23).
2. Secure with (2) hair pin cotters through holes in rod of the quick-attach bracket (Fig. 23).



1998

Figure 23

- | | |
|------------------------|-----------------|
| 1 Quick-attach bracket | 3 Drawbar hitch |
| 2 Hair pin cotter | |

3. Tip the tractor seat forward.
4. With lid in the open position carefully lift the bagger top and slide it onto the quick-attach bracket (Fig. 24).

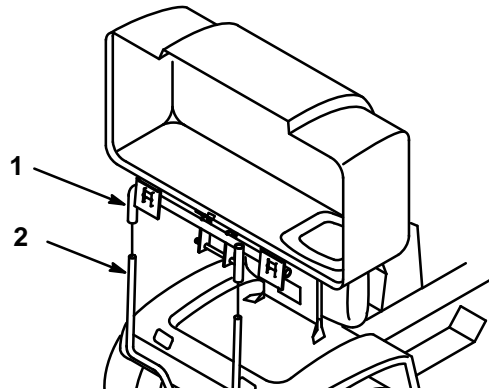


Figure 24

- | | |
|--------------|------------------------|
| 1 Bagger top | 2 Quick-attach bracket |
|--------------|------------------------|

CAUTION

POTENTIAL HAZARD

- The hinge frame on the bagger top is spring-loaded.

WHAT CAN HAPPEN

- If you remove the bagger top when it is closed (in the down position), the top may suddenly fly open and you or someone else may be bruised, pinched, or injured in another way.

HOW TO AVOID THE HAZARD

- Always open (raise) the bagger top before you remove or install it on the quick-attach bracket.

5. Install the bags by attaching the bag frame hooks onto the retaining brackets (Fig. 25).

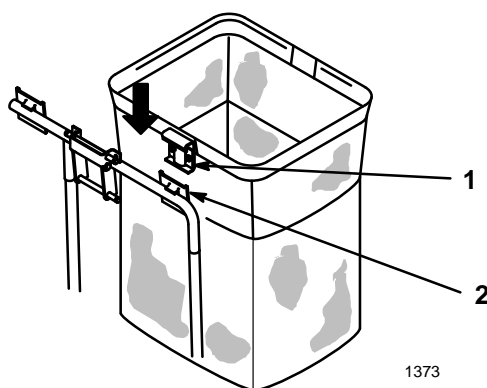


Figure 25

- 1 Bag frame hook 2 Retaining bracket

6. Lower the bagger top onto the bags. Then push down on both bag retainer handles until they lock on the bag frame (Fig. 26).

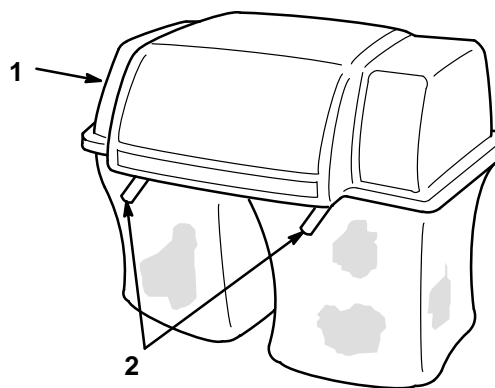


Figure 26

- 1 Bagger top 2 Bag retainer handles

Install Discharge Tube

1. Move the tractor seat to its normal position.
2. Insert the upper end of the discharge tube into the bagger top. Slide the lower end of the discharge tube over the blower opening (Fig. 27).
3. Hook the rubber latch over the knob (Fig. 27).

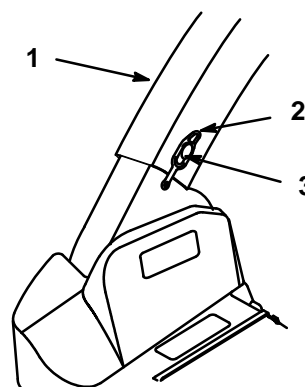


Figure 27

- 1 Discharge tube 3 Knob
2 Rubber latch

1376

1373

1847

Removing the Bagger

Park the tractor with the mower and vac bagger on a level surface and lower the attachment to the ground. Set the park brake, release the PTO lever to the “Stop” position and turn the ignition key to “Off” to stop the engine. Remove the ignition key.

DANGER

POTENTIAL HAZARD

- Sometimes people are tempted to operate the tractor and mower without both grass bags installed on the Twin Bagger or with the discharge tube removed. This exposes you and others to thrown debris and blade contact.

WHAT CAN HAPPEN

- You and others may die or be injured severely if you are hit by thrown debris or cut by the blade.

HOW TO AVOID THE HAZARD

- Always operate the mower with either the complete Twin Bagger grass catcher mounted in place or use the mower to side discharge, making sure that the spring-loaded discharge chute is in the down position.

Remove the Discharge Tube

1. Unhook the rubber latch from the knob (Fig. 28).
2. Slide the lower end of the discharge tube off the blower discharge opening (Fig. 28). Pull the upper end of discharge tube out of bagger top.

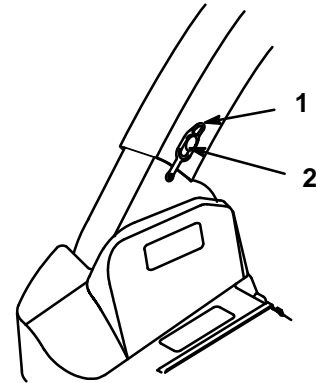


Figure 28

1 Rubber latch

2 Knob

1847

Remove the Bagger

1. Tip the tractor seat forward.
2. Open the bagger top and remove the grass bags from the bag frame (Fig. 29).

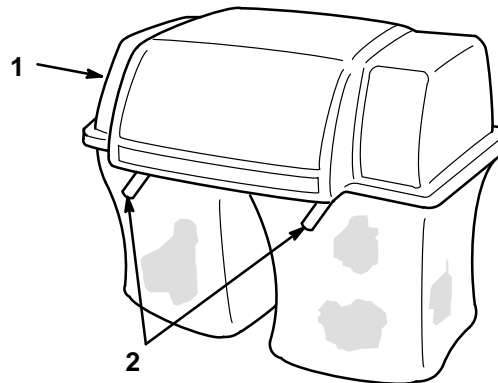


Figure 29

1 Bagger top

2 Bag retainer handles

1376

CAUTION

POTENTIAL HAZARD

- The hinge frame on the bagger top is spring-loaded.

WHAT CAN HAPPEN

- If you remove the bagger top when it is closed (in the down position), the top may suddenly fly open and you or someone else may be bruised, pinched, or injured in another way.

HOW TO AVOID THE HAZARD

- Always open (raise) the bagger top before you remove or install it on the quick-attach bracket.

3. With lid in the open position carefully lift the bagger top and slide it off the quick-attach bracket (Fig. 30).

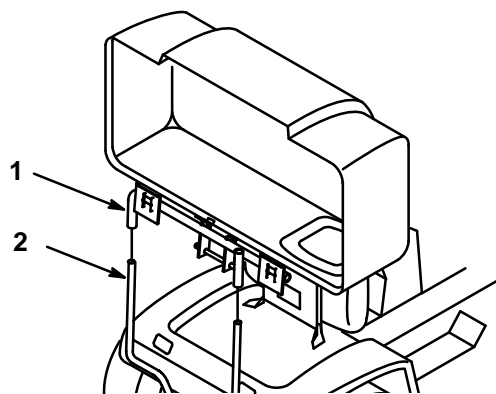


Figure 30

- 1 Bagger top 2 Quick-attach bracket

4. Remove (2) hair pin cotters from holes in rod of quick-attach bracket (Fig. 31).
5. Remove the quick-attach bracket from the notches in the support brackets on the tractor frame and the drawbar hitch (Fig. 31).

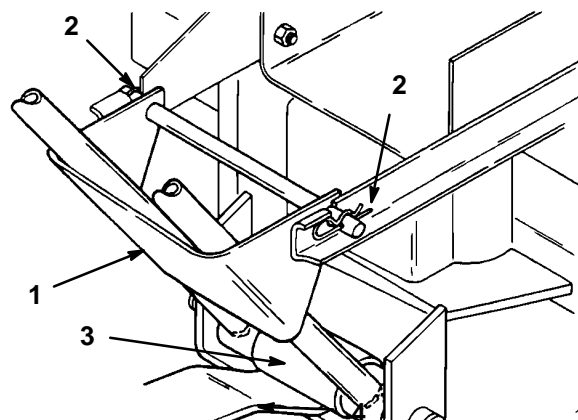


Figure 31

- 1 Quick-attach bracket 3 Drawbar hitch
2 Hair pin cotter

6. Move the tractor seat to its normal position.

Remove Blower Belt Cover

1. Remove the blower belt cover by removing (2) lock nuts and bolts (Fig. 32).

Note: Save all parts and hardware for use when reinstalling the blower.

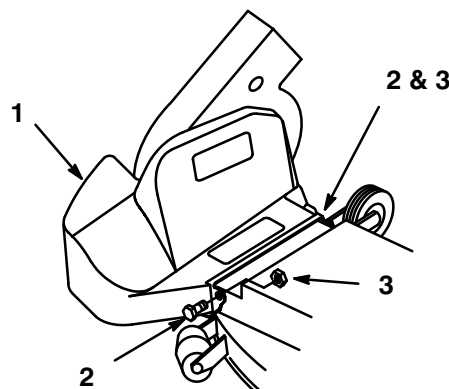


Figure 32

- 1 Mower belt cover 3 Lock nut
2 Bolt

Remove the Mower Belt Cover

1. Remove the mower belt cover from the right side pulley (Fig. 33). Save mounting hardware.
2. Unhook the blower belt from the mower pulley and remove the belt (Fig. 34).

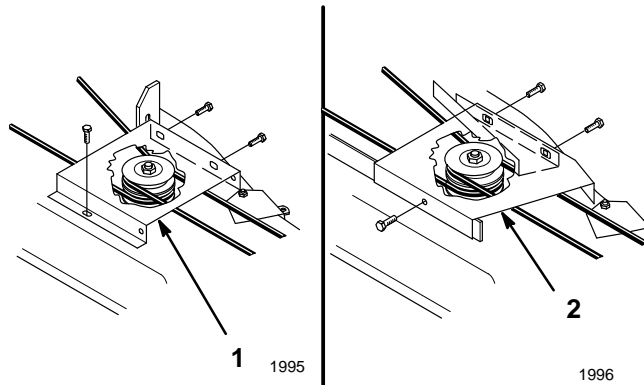


Figure 33

1 Belt cover 42"

2 Belt cover 48"

3. Remove belt cover bracket (Fig. 34).

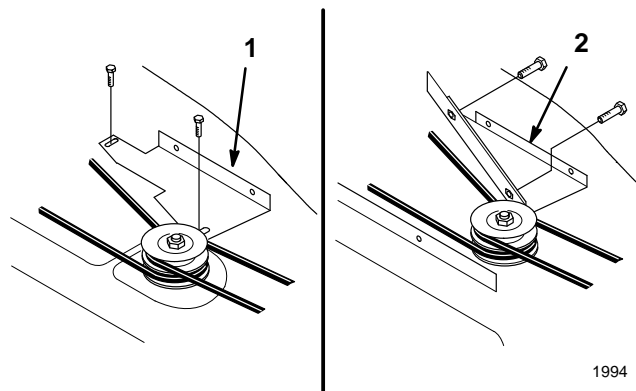


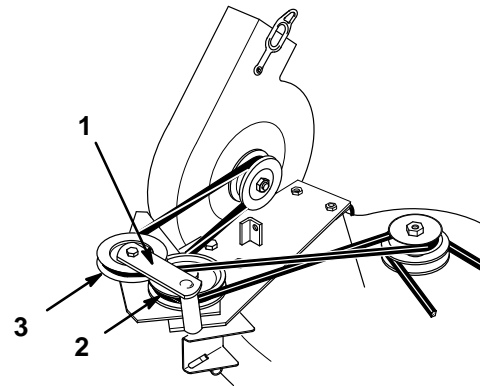
Figure 34

1 Belt cover bracket 42"

2 Belt cover bracket 48"

Remove the Blower from the Mower

1. Open the latch and swing the blower out away from the mower, remove the blower belt from the mower spindle pulley (Fig. 35).



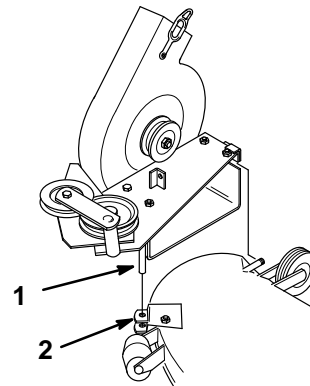
1839

Figure 35

- 1 Idler pulley bracket and pulley
- 2 Top side of belt against bottom pulley

- 3 V-side of belt into top pulley

2. Remove the blower by lifting the pivot pin out of the pivot support (Fig. 36).



1838

Figure 36

- 1 Pivot pin

- 2 Pivot support

Remove the Blower Drive Pulley

1. Pull on the mower idler assembly to release the belt tension and remove blade drive belt from right side pulley (Fig. 37).
2. Remove nut and lock washer from right hand blade spindle (Fig. 37). Remove the double pulley.

Note: Block blade with a piece of wood to stop it from turning while you remove the pulley nut. If blade slips hold hex portion of spindle with a wrench.

Note: When nut is removed the shaft is free to drop out of the spindle. Be sure to support the spindle and blade from the bottom side.

3. Slide the single pulley (removed when bagger was installed) onto the spindle shaft. Secure with previously removed lock washer and nut (Fig. 37).
4. Tighten the nut to 50–75 ft. lb. (68–101 Nm).
5. Install the existing mower belt by rotating it onto the pulley (Fig. 37).

Note: Check that mower belt is properly located on idler and pulleys.

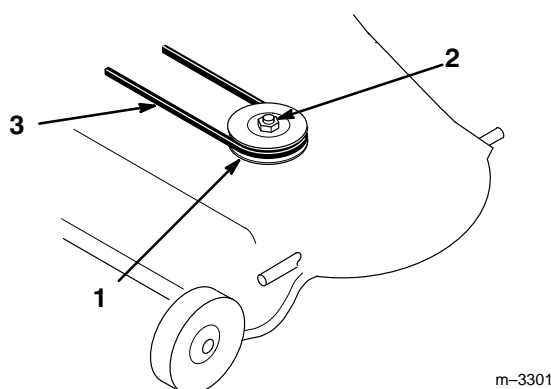


Figure 37

- | | |
|------------------------|--------------------|
| 1 Single groove pulley | 3 Blade drive belt |
| 2 Lock washer and nut | |

Remove the Blower Pivot Support

1. Remove the pivot support from the mower (Fig. 38).

Note: Save all parts and hardware for use when reinstalling the blower.

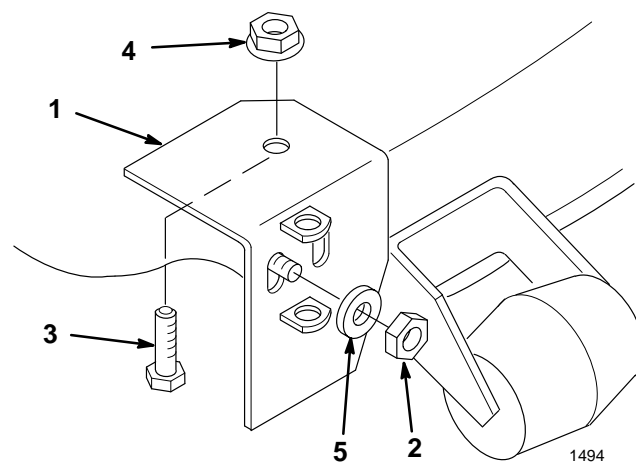


Figure 38

- | | |
|-----------------|------------------|
| 1 Pivot support | 4 Flange nut |
| 2 Nut | 5 Plastic washer |
| 3 Bolt | |

Install Belt Cover and Discharge Chute

1. Install discharge chute onto mower with saved hardware (Fig. 39).
2. Install belt cover onto mower (Fig. 39).

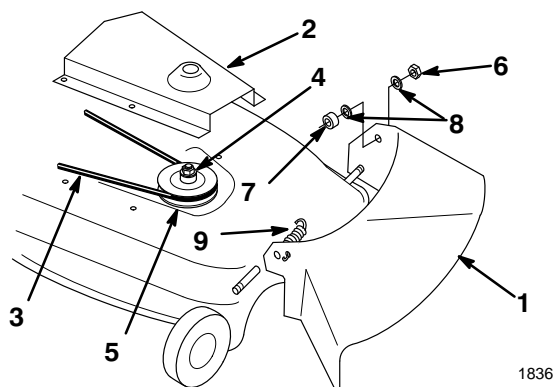


Figure 39

- | | |
|-----------------------|-------------------|
| 1 Discharge chute | 6 Jam nut, 3/8" |
| 2 Belt cover | 7 Rubber bushing |
| 3 Blade drive belt | 8 Plastic washers |
| 4 Nut and lock washer | 9 Torsion spring |
| 5 Single pulley | |
-

Operation

CAUTION

To Avoid Personal Injury:

- Become familiar with all operating and safety instructions in the operator's manual for your tractor and mower before using this attachment.
- Never remove the discharge tube, bags, bagger top, or the blower while the engine is running.
- Always shut the engine off before clearing an obstruction from the vac bagging system.
- Never do maintenance or repairs while the engine is running.

Height-of-Cut	Recommended Link Position
1–2 in. (25–51 mm)	5
2–3 in. (51–76 mm)	4
3–4 in. (76–101 mm)	3–4

Adjusting Height-of-Cut

When mower height-of-cut is changed, the spring location in the chain links must also be changed.

1. Select spring attachment link according to chart for the height-of-cut used.
2. Hook spring into recommended link (Fig. 40).

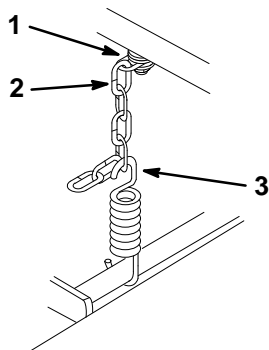


Figure 40

- | | |
|-----------------|---------------|
| 1 Mounting Link | 3 Spring Hook |
| 2 Link 1 | |

Using the Full Bag Tester

As grass is cut and blown into the bags, the left bag fills first, then the right bag. If you overfill the bags, grass will eventually plug the discharge tube or elbow.

1. Stop the tractor and apply the brake.
2. To check if both bags are full, periodically raise the full bag tester handle (Fig. 41). If you feel resistance as you raise the handle, the bags must be emptied because they are full (Fig. 41).

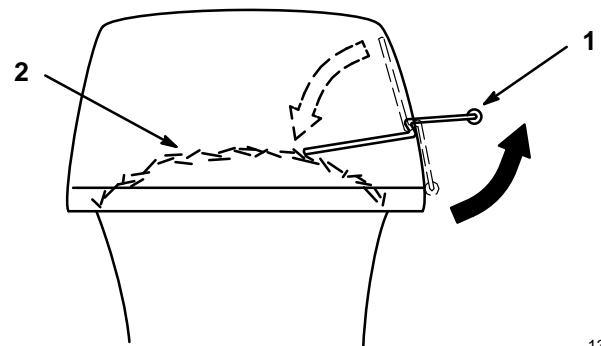


Figure 41

- | | |
|--------------------------|------------|
| 1 Full bag tester handle | 2 Bag full |
|--------------------------|------------|

1381

m-3183

Emptying the Grass Bags

Grass bags can weigh up to 90 lb (41kg) when full. Be careful when lifting or handling a grass bag that is full. To empty the grass bags:

1. Stop the tractor, set the parking brake, and disengage the power take off (PTO) by pulling the PTO control to OFF (this stops the mower blades). Shut the engine off before you get off the tractor. Remove the ignition key.
2. Tip the tractor seat forward.
3. Pull up on both bag retainer handles until they unlock from the bag frame (Fig. 26). Now open (raise) the bagger top.
4. Compress debris into the bags. With both hands, lift up on the bag and unhook it from the retaining bracket (Fig. 25). Empty the bag. Repeat for the other bag.
5. Install the bags by attaching the bag frame hooks onto the retaining brackets (Fig. 25).
6. Lower the bagger top onto the bags. Then push down on both bag retainer handles until they lock on the bag frame (Fig. 26).
7. Move the tractor seat to its normal position.

Clearing Obstructions From Bagger

1. Stop the tractor, shift into neutral, set the parking brake, pull the PTO control to OFF (this stops the mower blades), turn the ignition key to OFF to stop the engine, and remove the key from the switch.
2. Check the grass bags and empty them if they are full.
3. Remove and separate the discharge tube and blower from the bagger top and mower. Using a stick or similar object, carefully remove and clear the obstruction from the mower, discharge tube, blower, and the bagger top.

4. After you remove the obstruction, install the complete bagger system and resume operation.

Operating and Bagging Tips

Size

Remember that the tractor is longer and wider with this attachment installed. By turning too sharply in confined places you may damage the attachment.

Trimming

Always trim with the left side of the mower. Do not trim with the right side of the mower because you could damage the bagger's blower and discharge tube.

Cutting Height

Do not set the mower cutting height too low because long grass surrounding the mower can prevent air from getting under the mower and entering the bagging system. If enough air doesn't get under the mower, the bagging system will plug.

Cutting Frequency

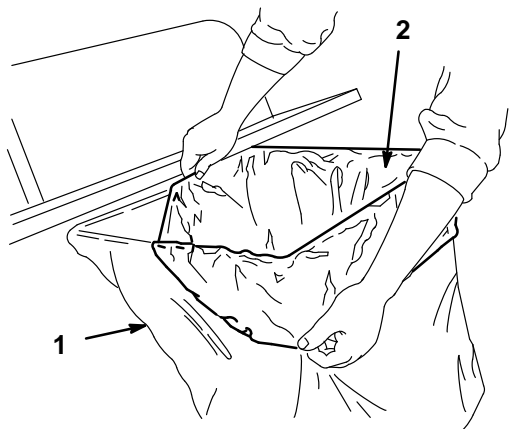
Cut the grass often, especially when it grows rapidly. You will have to cut your grass twice if it gets excessively long (refer to Bagging Long Grass, page 23).

Cutting Technique

For best lawn appearance, be sure to slightly overlap the mower into the previously cut area. This helps reduce the load on the engine and reduces the chance of plugging the blower and discharge tube.

Using Bags

Although not required, bags may be inserted into each cloth grass bag as a liner to collect clippings and make disposal more convenient (Fig. 42). If you use a bag liner, remove the filled grass bag and close the top of the liner. Then pull the liner out the grass bag or turn the bag upside down while holding the handle on the bottom of the grass bag (allows liner to slide out).



1378

Figure 42

1 Cloth grass bag

2 Bag (liner)

Bagging Speed

Most often you will bag with the tractor throttle in the FAST position and drive at a normal ground speed. However, in extremely dry and dusty grass, you may want to slightly reduce throttle speed and increase ground speed of the tractor. The bagging system may plug if you drive too fast and the engine speed gets too slow. On hills it may be necessary to slow the tractor's ground speed. This helps maintain engine speed and bagging efficiency. Mow down hill whenever possible.

CAUTION

POTENTIAL HAZARD

- As the grass bags fill, extra weight is added to the back of the tractor.

WHAT CAN HAPPEN

- If you stop and start suddenly on hills, you may lose steering control or the tractor may tip.

HOW TO AVOID THE HAZARD

- Do not start or stop suddenly when going uphill or downhill. Avoid uphill starts.
- If you do stop the tractor when going uphill, disengage the PTO (stop the mower blades) by pushing the PTO control to OFF. Then back down the hill using slow reverse speed.
- Do not change speeds or stop on slopes.

Bagging Long Grass

Excessively long grass is heavy and may not be propelled completely into the grass bags. If this happens, the discharge tube and blower may plug. To avoid plugging the bagging system, mow the grass at a high height-of-cut, then lower the mower to your normal cutting height and repeat the bagging process.

Bagging Wet Grass

Always try to cut grass when it is dry because your lawn will have a neat appearance. If you must cut wet grass, use the conventional side discharge feature of the mower. Several hours later, when the clippings are dry, install the complete bagger attachment and vacuum up the grass clippings.

Signs of Plugging

As you are bagging, a small amount of grass clippings normally blow out the front of the mower. An excessive amount of clipping blow-out indicates that the bags are full or the system is plugged.

Maintenance

Service Interval Chart

Service Operation	Each Use	5 Hours	25 Hours	50 Hours	Storage Service	Notes
Cutter Blade—check		X	X		X	
Grease—Mower deck				X	X	
Belts—check for wear/cracks					X	
Mower Housing—clean	X	X			X	
Chipped Surfaces—paint					X	

CAUTION

POTENTIAL HAZARD

- If you leave the key in the ignition switch, someone could start the engine.

WHAT CAN HAPPEN

- Accidental starting of the engine could seriously injure you or other bystanders.

HOW TO AVOID THE HAZARD

- Remove the key from the ignition switch and pull the wire off the spark plug before you do any maintenance. Also push the wire aside so it does not accidentally contact the spark plug.

Inspecting the Vac Bagger Attachment

Inspect the blower and bagger attachment after the first ten hours of operation, and monthly thereafter.

1. Check the discharge tube, elbow, and the bagger top. Replace these parts if they are cracked or broken.
2. Tighten all nuts bolts and screws.
3. Inspect the grass bags for deterioration.

DANGER

POTENTIAL HAZARD

- The grass bag material may tear, wear, and eventually deteriorate.

WHAT CAN HAPPEN

- You or bystanders could be severely injured by flying debris or thrown objects that may pass through worn or deteriorated grass bags.

HOW TO AVOID THE HAZARD

- Frequently check the grass bags for holes, rips, wear, and other deterioration. Do not wash the grass bags. If the bag has deteriorated, install new grass bags supplied by the manufacturer of this bagger attachment.

Inspecting the Mower Blades

1. Inspect the mower blades regularly and whenever a blade strikes a foreign object.
2. If blades are badly worn or damaged, install new blades. Refer to your tractor or mower operator's manual for complete blade maintenance.

Caring for the Grass Bags

1. Washing the grass bags is not recommended.
2. To prevent rapid deterioration of bag material, store the bags so they dry completely after each use.

CAUTION

POTENTIAL HAZARD

- If you store grass clippings in the bagger attachment cloth grass bags, under the right conditions, spontaneous combustion (a fire-generating process that occurs without an external source of ignition) could occur.

WHAT CAN HAPPEN

- If a fire occurs, property could be damaged and/or someone could be injured.

HOW TO AVOID THE HAZARD

- The cloth grass bags are not storage containers. Never store grass clippings and debris in the grass bags.

Cleaning the Vac Bagger Attachment

1. After each use, remove and wash the inside and outside of the bagger top, discharge tube, discharge elbow, blower and the underside of the mower, using water sprayed from a garden hose. Use a mild automotive detergent to remove stubborn dirt.
2. Make sure you remove matted grass from all parts.
3. After washing let all parts dry thoroughly. Do not wash the grass bags.

Storage

1. Clean the bagger attachment (refer to Cleaning the Vac Bagger Attachment, page 25).
2. Inspect the bagger attachment for damage (refer to Inspecting the Vac Bagger Attachment, page 25).
3. Make sure the grass bags are empty and thoroughly dry.
4. Store the machine in a clean, dry place, out of direct sunlight. This protects the plastic parts and extends the life of the machine. If you must store the machine outside, cover it with a weatherproof cover.