



**53cm Recycler[®] /Rear Bagger
Mower**

Model No. 20786 – 9900001 & Up

Parts Catalog

ORDERING REPLACEMENT PARTS

To order replacement parts, please supply: the part number, the quantity, and the description of each part desired.

Contents

| Description | Page | Description | Page |
|--------------------------|------|------------------------------|-------|
| Housing Assembly | 1 | Grass Bag Assembly | 6 |
| Engine Assembly | 2 | Engine GTS-200 | 7-15 |
| Rear Axle Assembly | 3 | Toro Part Number Index | 16-18 |
| Gear Case Assembly | 4 | Maintenance | 19-21 |
| Handle Assembly | 5 | | |

Note:

Accessories

| Description | Model / Parts No. | Description | Model / Parts No. |
|--------------------------------|-------------------|-------------|-------------------|
| Side Discharge Chute Kit | Model No. 59113 | | |
| Dethatcher Kit | Model No. 59131 | | |

Part Description Abbreviations

Part descriptions in this catalog may include the following abbreviations.

| Abbreviation | Meaning | Abbreviation | Meaning |
|--------------|------------------------|--------------|-----------------------------------|
| AR | as required | HWHTF | hex washer head thread forming |
| ASM | assembly | INC | incorporated |
| CARR | carriage | LH | left hand |
| DEG | degrees | PH | pan head |
| FH | flat head | PPH | Phillips pan head |
| GA | gauge | PTO | power take off |
| HF | hex flange | RH | right hand |
| HFW | hex flange washer | SFH | slotted fillister head |
| HH | hex head | SH | square head |
| HHF | hex head flange | SHWH | slotted hex washer head |
| HHST | hex head self tapping | SPH | slotted pan head |
| HJ | hex jam | STD | standard |
| HOC | height-of-cut | TAP | self tapping |
| HS | hex socket | TH | truss head |
| HSBH | hex socket button head | TTH | Torx truss head |
| HSFH | hex socket flat head | WH | wing head |
| HSH | hex socket head | | |
| HWH | hex washer head | | |

Important Format Explanations

This catalog uses special formats to convey information in illustrations and parts lists. Specifically, one format is used in conjunction with service assemblies and another with quantities associated with reference numbers.

Service Assemblies

Parts within service assemblies have reference numbers in the form $X:Y$. X is the reference number of the service assembly and Y is a sequential number unique to each part within the service assembly.

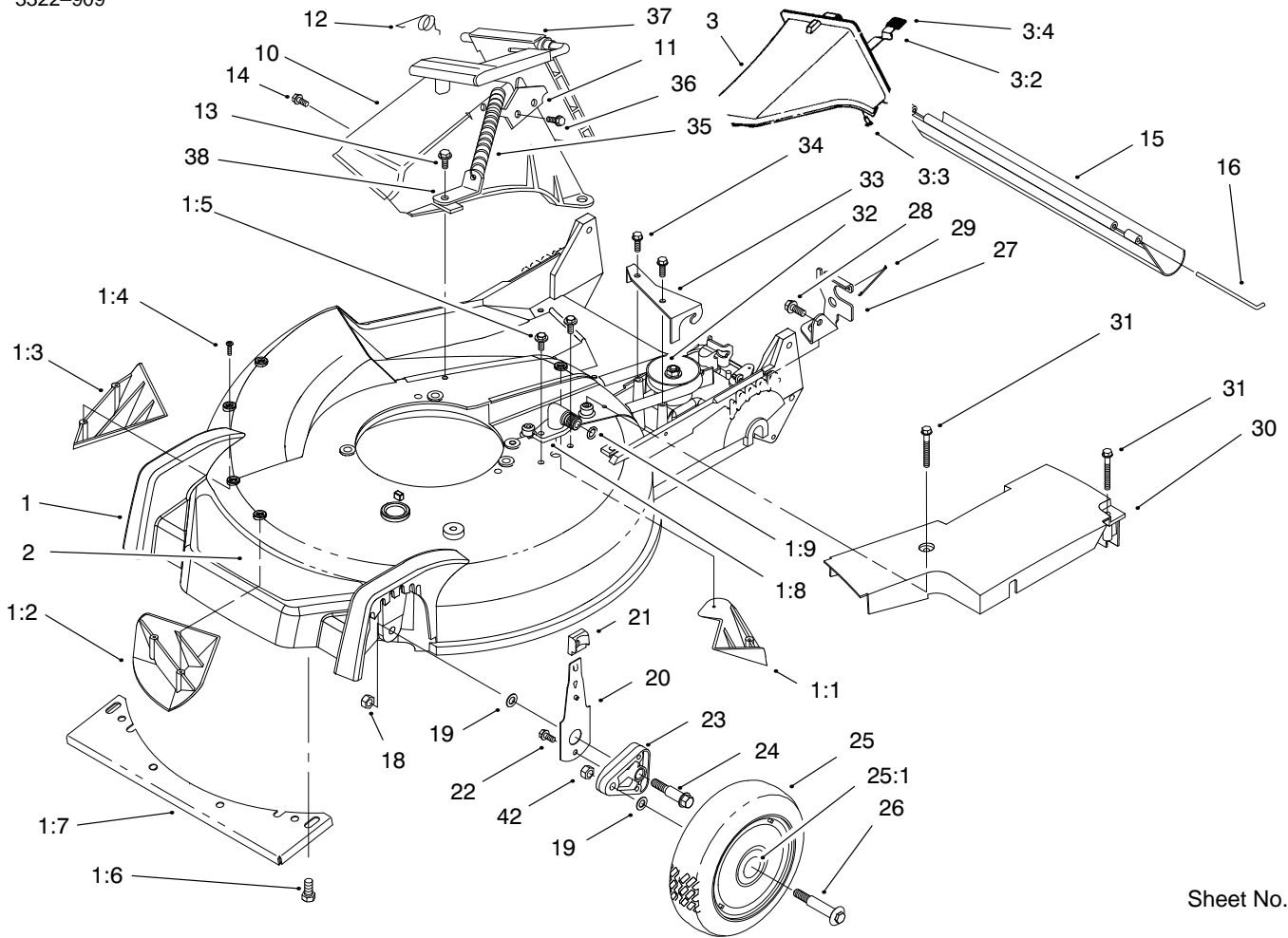
For example, a wheel assembly might be identified by reference number 6, the tire by 6:1, the valve by 6:2, and the wheel by 6:3. When you order the assembly identified by reference number 6, you receive all parts identified by reference numbers 6:1, 6:2, and 6:3. However, you may also order any part individually.

Reference numbers of this type appear in part lists and as callouts in illustrations.

Reference Numbers with Quantities

Illustrations may have a quantity in parentheses next to a reference number, in the form $X (Y)$. X is the reference number. Y in parentheses is the quantity of the part identified by the reference number.

For example, the illustration callout 4 (2) indicates that two parts are used in that instance.

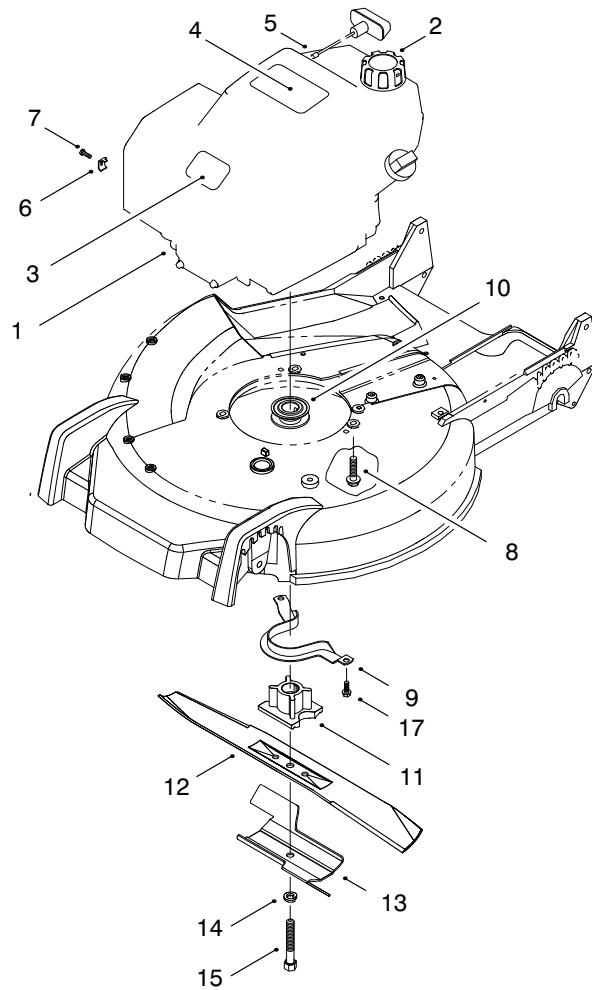


Sheet No.:2

Housing Assembly

| Ref. No. | Part No. | Qty. | Description |
|----------|-----------|------|----------------------|
| 1 | 95-5615 | 1 | Housing-Rwd |
| 1:1 | 92-1750 | 1 | Plate-Kicker Rear |
| 1:2 | 92-1720 | 1 | Kicker-RH |
| 1:3 | 92-1730 | 1 | Kicker-LH |
| 1:4 | 32144-111 | 6 | Screw - PPH |
| 1:5 | 46-6811 | 2 | Screw-HWH |
| 1:6 | 32144-70 | 4 | Screw-TAP |
| 1:7 | 46-5400 | 1 | Shield-front |
| 1:8 | 95-2747 | 1 | Fitting-Washout |
| 1:9 | 46-6290 | 1 | O-Ring |
| 2 | 94-5407 | 1 | Decal-Deck |
| 3 | 77-0502 | 1 | ASM-Plug |
| 3:2 | 76-4640 | 1 | Latch Discharge Plug |
| 3:3 | 3295-35 | 1 | Rivet Solid |
| 3:4 | 76-4650 | 1 | Grip Latch |
| 10 | 82-9151 | 1 | Tunnel-Discharge |
| 11 | 93-3154 | 1 | Plate-Latch |
| 12 | 80-3770 | 1 | Retainer-Door |
| 13 | 46-6811 | 3 | Screw-HWH |
| 14 | 46-6810 | 1 | Screw HWH |
| 15 | 44-0580 | 1 | Shield-Trailing |
| 16 | 33-3208 | 1 | Rod-Shield |
| 18 | 3296-6 | 2 | Nut-Lock |
| 19 | 40-1940 | 4 | Washer |
| 20 | 66-0541 | 2 | ASM-Spring Arm |
| 21 | 25-7740 | 2 | Knob-Arm |

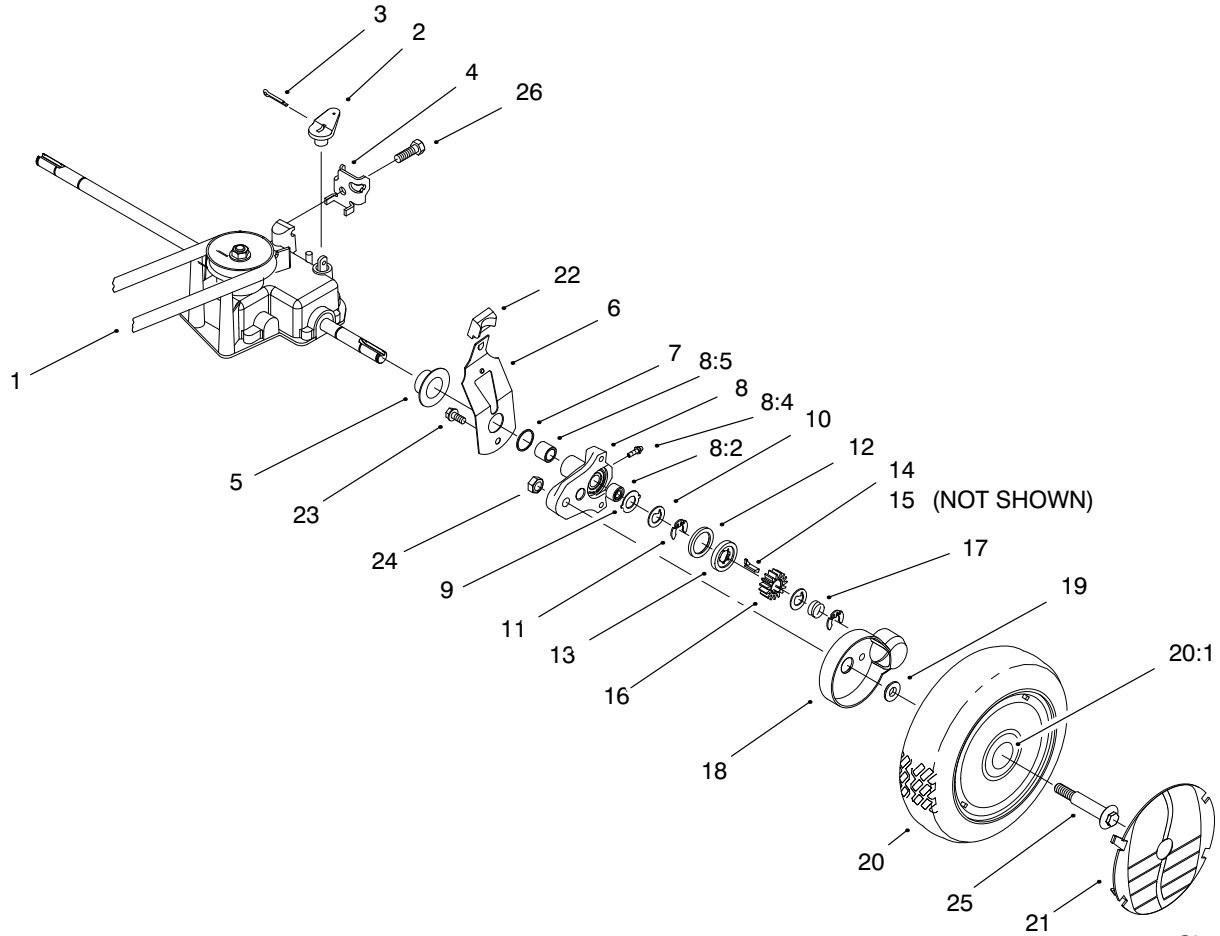
| Ref. No. | Part No. | Qty. | Description |
|----------|----------|------|--------------------|
| 22 | 32144-85 | 2 | Screw-HH |
| 23 | 66-0580 | 2 | Arm-Pivot |
| 24 | 66-0560 | 2 | Screw-Shoulder |
| 25 | 92-9592 | 2 | Wheel & Tire-ASM |
| 25:1 | 27-6250 | 4 | Bushing |
| 26 | 92-1057 | 2 | Bolt-Wheel HH |
| 27 | 82-5680 | 1 | Bracket-Adjustment |
| 28 | 32144-70 | 1 | Screw-TAP |
| 29 | 46-7030 | 1 | Retainer-cable |
| 30 | 98-1502 | 1 | Cover-Belt |
| 31 | 37-7260 | 2 | Screw-TAP |
| 32 | 62-6673 | 1 | ASM-Gearcase |
| 33 | 62-4320 | 1 | Bracket-Guide |
| 34 | 49-2040 | 2 | Screw-HH |
| 35 | 76-4660 | 1 | Spring-Extension |
| 36 | 46-8090 | 2 | Screw-Tapping |
| 37 | 93-7351 | 1 | ASM-Door |
| 38 | 71-9350 | 1 | Spring-Bracket |
| 48 | 603773 | 2 | Nut-Lock |



Sheet No.:3

Engine Assembly

| Ref. No. | Part No. | Qty. | Description | Ref. No. | Part No. | Qty. | Description |
|----------|-----------|------|----------------------|----------|----------|------|-------------|
| 1 | | 1 | Engine-Gts Ohv 200 | | | | |
| 2 | 93-7198 | 1 | ASM-Cap | | | | |
| 3 | 92-2289 | 1 | Plate-Logo | | | | |
| 4 | 98-2004 | 1 | Decal-Engine | | | | |
| 5 | 2210-316 | 1 | Rope-Stop | | | | |
| 6 | 2210-249 | 1 | Clamp-Casing | | | | |
| 7 | 93-8470 | 1 | Screw-Clamp | | | | |
| 8 | 32144-102 | 3 | Screw | | | | |
| 9 | 66-0570 | 1 | Guide-Belt | | | | |
| 10 | 62-7550 | 1 | Pulley-Driver | | | | |
| 11 | 93-4107 | 1 | Retainer-Blade | | | | |
| 12 | 93-4106 | 1 | Blade-Generation Iii | | | | |
| 13 | 94-1608 | 1 | Stiffener-Blade | | | | |
| 14 | 3253-22 | 1 | Washer-Lock | | | | |
| 15 | 26-0670 | 1 | Bolt-Blade | | | | |
| 17 | 32144-70 | 2 | Screw-TAP | | | | |

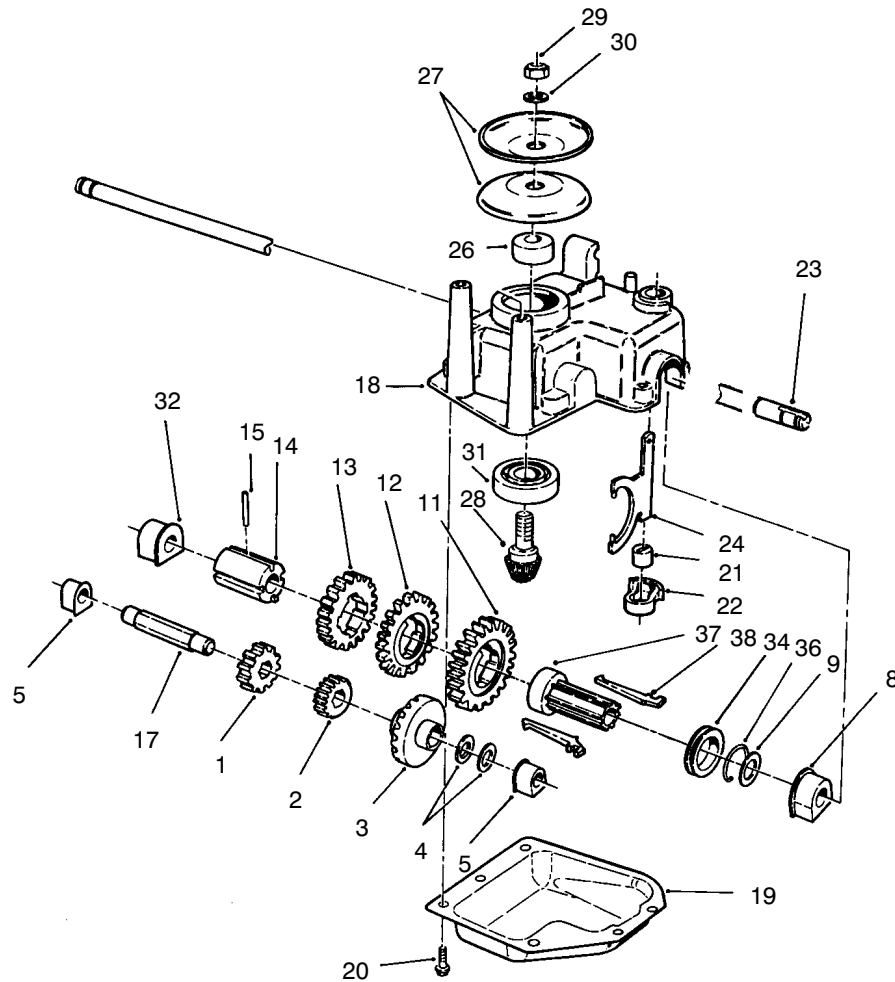


Sheet No.:4

Rear Axle Assembly

| Ref. No. | Part No. | Qty. | Description |
|----------|----------|------|--------------------|
| 1 | 62-3900 | 1 | V-Belt |
| 2 | 60-8821 | 1 | Lever-Shift |
| 3 | 3272-10 | 1 | Pin-Cotter |
| 4 | 82-8780 | 1 | Retainer-Cable |
| 5 | 42-3520 | 2 | Cap-End |
| 6 | 63-8721 | 2 | ASM-Arm |
| 7 | 237-153 | 2 | O-Ring |
| 8 | 63-8701 | 2 | ASM |
| 8:2 | 48-2060 | 2 | Bearing-Needle |
| 8:4 | 302-56 | 2 | Fitting-Grease |
| 8:5 | 70-9760 | 2 | Bushing |
| 9 | 65-4730 | 2 | Washer-Thrust |
| 10 | 65-4740 | 4 | Washer-Thrust |
| 11 | 65-2720 | 4 | Ring-Retaining |
| 12 | 65-4710 | 2 | Ring-Friction |
| 13 | 65-4760 | 2 | Washer |
| 14 | 66-6050 | 1 | Key-Rocking LH |
| 15 | 66-6040 | 1 | Key-Locking RH |
| 16 | 65-4750 | 2 | Gear-Pinion |
| 17 | 65-4720 | 2 | Spring-Compression |
| 18 | 74-1660 | 2 | Cover-Wheel |
| 19 | 74-1671 | 2 | Spacer-Cover |
| 20 | 99-8136 | 2 | Wheel-ASM |
| 20:1 | 27-6250 | 4 | Bushing |
| 21 | 92-7663 | 1 | Cover-Wheel |
| 22 | 25-7740 | 2 | Knob-Arm |

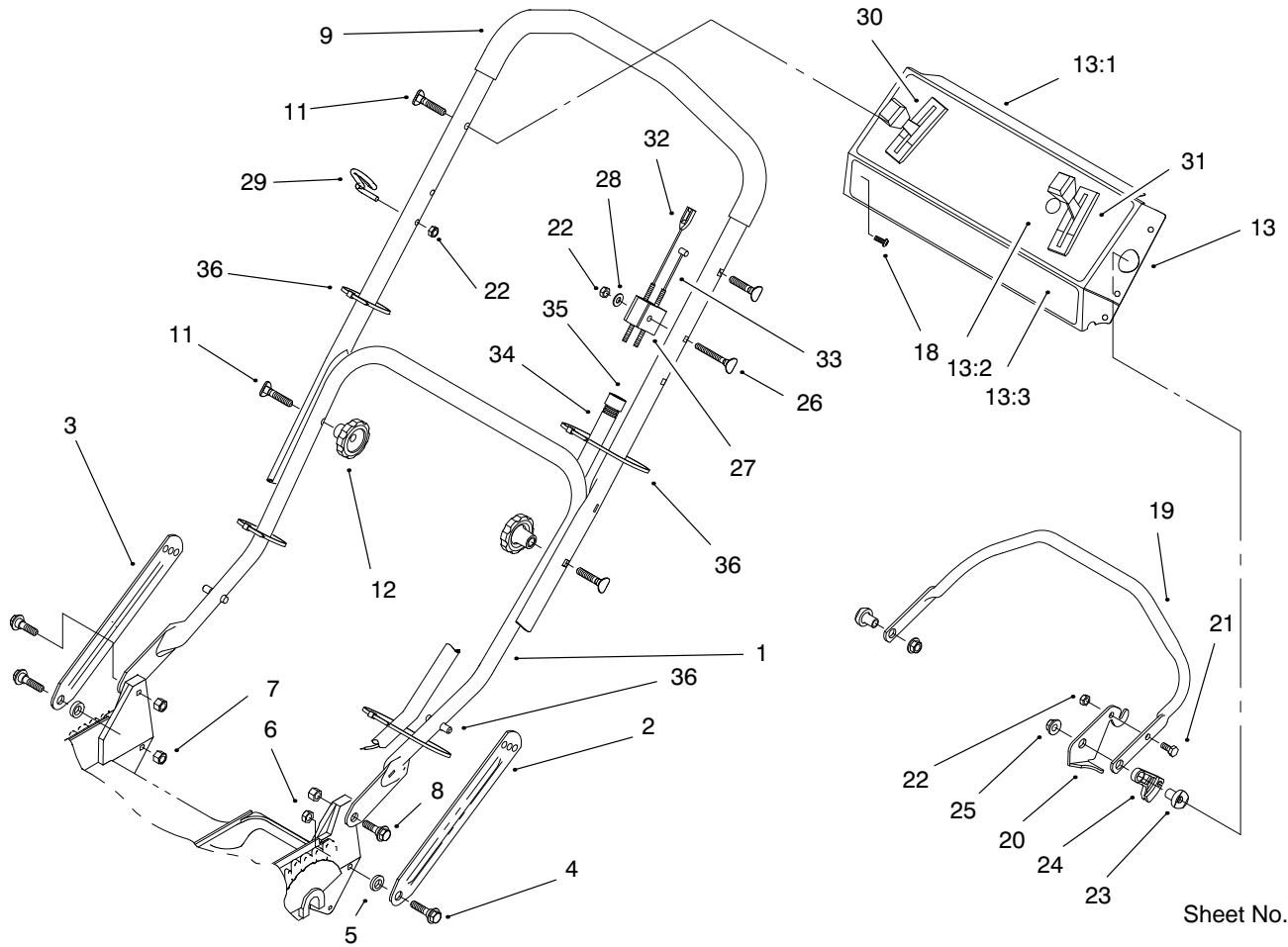
| Ref. No. | Part No. | Qty. | Description |
|----------|----------|------|---------------|
| 23 | 32144-85 | 2 | Screw-HH |
| 24 | 603773 | 2 | Nut-Lock |
| 25 | 92-1057 | 2 | Bolt-Wheel HH |
| 26 | 32144-70 | 1 | Screw-TAP |



Sheet No.:101

Gear Case Assembly

| Ref. No. | Part No. | Qty. | Description | Ref. No. | Part No. | Qty. | Description |
|----------|-----------|------|----------------------|----------|----------|------|--------------------|
| 1 | 55-3800 | 1 | Pinion 25t 3rd Gear | 32 | 60-8850 | 1 | Bushing-Output |
| 2 | 55-3780 | 1 | Pinion 20t 2nd Gear | 34 | 76-0770 | 1 | Collar-Shift |
| 3 | 55-3760 | 1 | 15 T Pinion | 36 | 65-5250 | 1 | Clip-Spring |
| 4 | 36-4791 | 2 | Washer-Thrust | 37 | 76-0780 | 1 | Sleeve-Shift Key |
| 5 | 60-8750 | 2 | Bushing | 38 | 76-0760 | 2 | Key-Shift |
| 8 | 60-8770 | 1 | Bushing-Output Shaft | 62-6673 | | 1 | Gear Case Complete |
| 9 | 36-4780 | 1 | Washer-Thrust | | | | |
| 11 | 55-3770 | 1 | Gear 49t 1st Gear | | | | |
| 12 | 55-3790 | 1 | Gear 44t 2nd Gear | | | | |
| 13 | 55-3810 | 1 | Gear 39t 3rd Gear | | | | |
| 14 | 60-8790 | 1 | Sleeve-Gear | | | | |
| 15 | 32121-120 | 1 | Pin-Coil | | | | |
| 17 | 60-8800 | 1 | Shaft-Intermediate | | | | |
| 18 | 60-8710 | 1 | Gearcase-Upper 3 Sp | | | | |
| 19 | 60-8730 | 1 | Cover-Gearcase | | | | |
| 20 | 49-2040 | 6 | Screw-HH | | | | |
| 21 | 29-9570 | 1 | Bushing-Yoke | | | | |
| 22 | 60-8810 | 1 | Retainer-Shift-Fork | | | | |
| 23 | 65-4770 | 1 | Shaft-Output | | | | |
| 24 | 60-8870 | 1 | Yoke-Shift | | | | |
| 26 | 62-6660 | 1 | Spacer-Pulley | | | | |
| 27 | 100-1176 | 2 | Pulley-Half | | | | |
| 28 | 60-8890 | 1 | Gear-Pinnion | | | | |
| 29 | 3296-5 | 1 | Nut-Lock | | | | |
| 30 | 3256-24 | 1 | Washer-Flat | | | | |
| 31 | 38-7820 | 1 | Bearing-Ball | | | | |

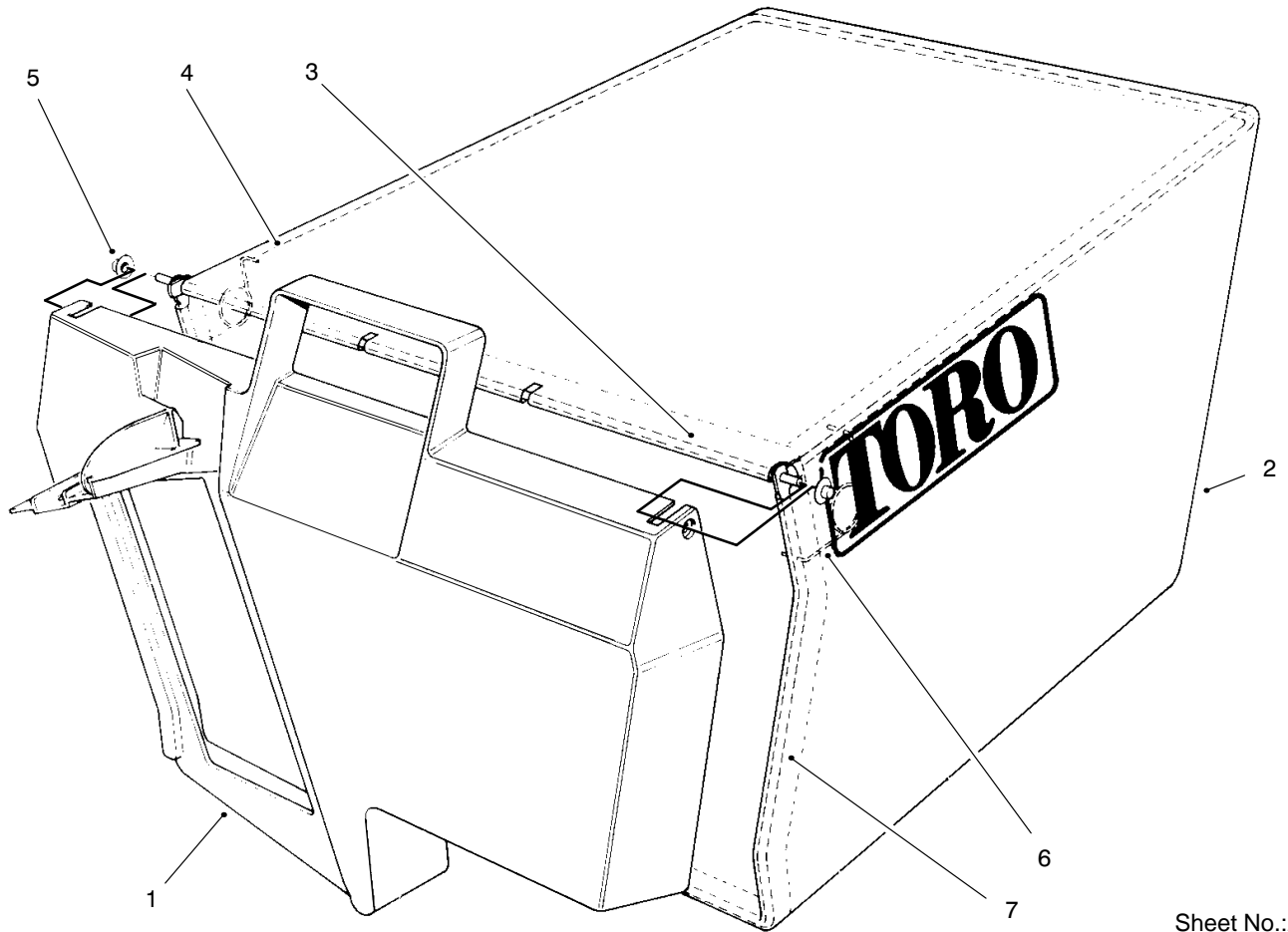


Sheet No.:5

Handle Assembly

| Ref. No. | Part No. | Qty. | Description |
|----------|----------|------|-------------------|
| 1 | 43-1362 | 1 | ASM-Handle |
| 2 | 84-8361 | 1 | Latch-Handle |
| 3 | 84-8401 | 1 | Latch-Handle |
| 4 | 27-7210 | 2 | Screw-Shoulder |
| 5 | 3-3287 | 2 | Spacer |
| 6 | 3296-47 | 1 | Nut-Lock |
| 7 | 3296-72 | 3 | Nut-Lock |
| 8 | 27-7211 | 2 | Screw-Shoulder |
| 9 | 94-4922 | 1 | ASM-Handle |
| 11 | 92-2260 | 4 | Screw-Handle |
| 12 | 19-4050 | 2 | Knob |
| 13 | 98-9232 | 1 | Panel-Control |
| 13:1 | 93-6655 | 1 | Decal-Danger |
| 13:2 | 98-2020 | 1 | Decal-Instruction |
| 13:3 | 92-7859 | 1 | Decal-Panel |
| 18 | 92-9665 | 5 | Screw-Phil |
| 19 | 52-7430 | 1 | Bar-Control |
| 20 | 66-5351 | 1 | Lever-Control |
| 21 | 321-39 | 1 | Screw-HH |
| 22 | 3296-73 | 3 | Nut-Lock |
| 23 | 49-1630 | 2 | Spacer-Support |
| 24 | 46-5520 | 1 | Lever-Traction |
| 25 | 3296-74 | 2 | Nut-Flange |
| 26 | 92-2269 | 1 | Screw-Handle |
| 27 | 46-6980 | 1 | Support-Cable |
| 28 | 3256-1 | 1 | Washer-Flat |

| Ref. No. | Part No. | Qty. | Description |
|----------|----------|------|------------------|
| 29 | 86-9671 | 1 | Guide-Rope |
| 30 | 76-2712 | 1 | Control-Speed |
| 31 | 98-1501 | 1 | Control-Throttle |
| 32 | 76-4331 | 1 | Cable-Brake |
| 33 | 46-5481 | 1 | Cable-Traction |
| 34 | 46-6440 | 1 | Cover-Cables |
| 35 | 2412-50 | 3 | Clip-Tubing |
| 36 | 3290-378 | 4 | Tie-Cable |

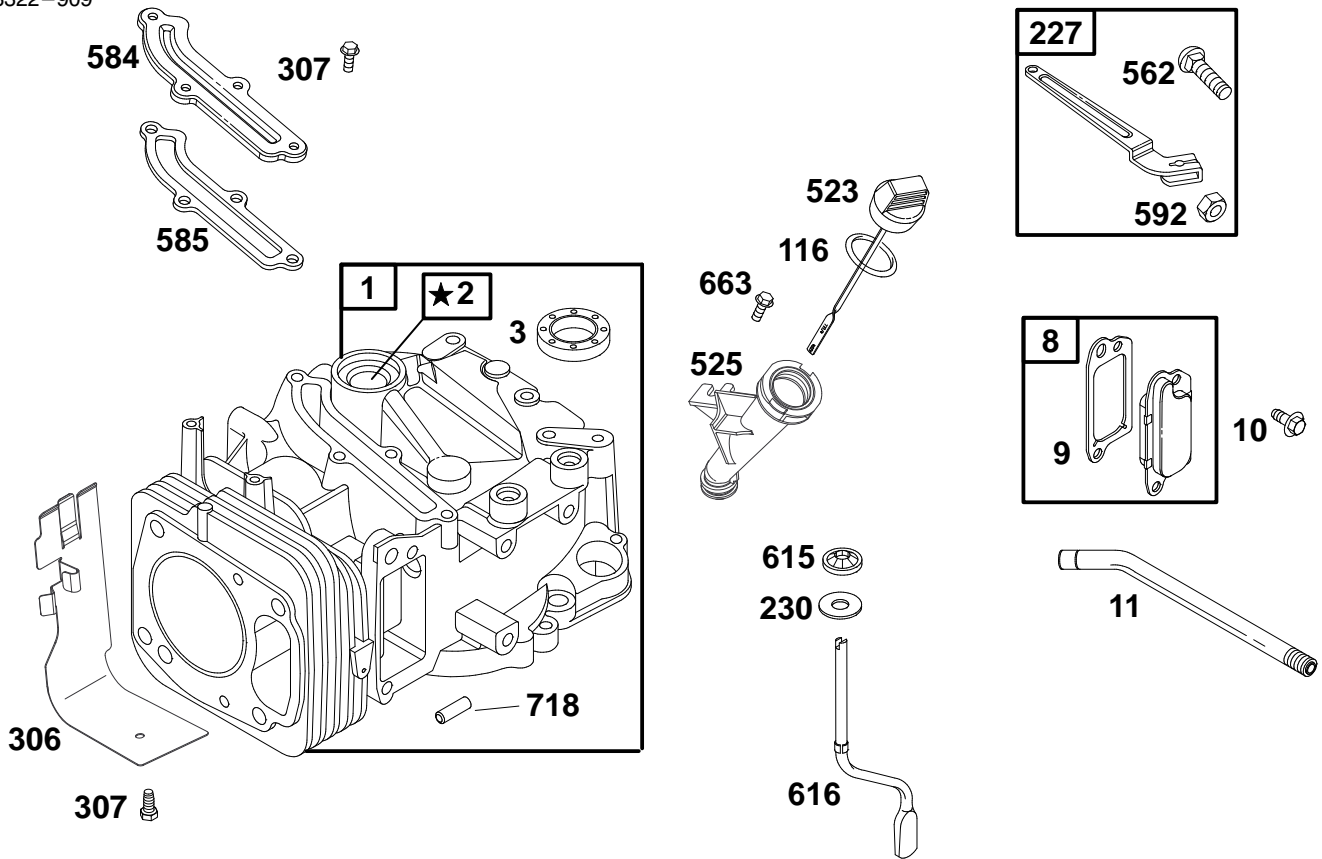


Sheet No.:200

Grass Bag Assembly

| Ref. No. | Part No. | Qty. | Description |
|----------|----------|------|-------------|
| 0 | 11-0189 | 1 | ASM-Bag |
| 1 | 37-1393 | 1 | Door-Bag |
| 2 | 44-0522 | 1 | Bag-Grass |
| 3 | 33-4820 | 1 | Hinge-Door |
| 4 | 42-4030 | 1 | Frame-Bag |
| 5 | 3290-422 | 2 | Nut-Push |
| 6 | 36-6910 | 2 | Spring |
| 7 | 42-4020 | 1 | Frame-Bag |

| Ref. No. | Part No. | Qty. | Description |
|----------|----------|------|-------------|
| | | | |
| | | | |
| | | | |
| | | | |
| | | | |
| | | | |
| | | | |
| | | | |
| | | | |
| | | | |



★ REQUIRES SPECIAL TOOLS TO INSTALL. SEE REPAIR INSTRUCTION MANUAL.

Assemblies include all parts shown in frames.

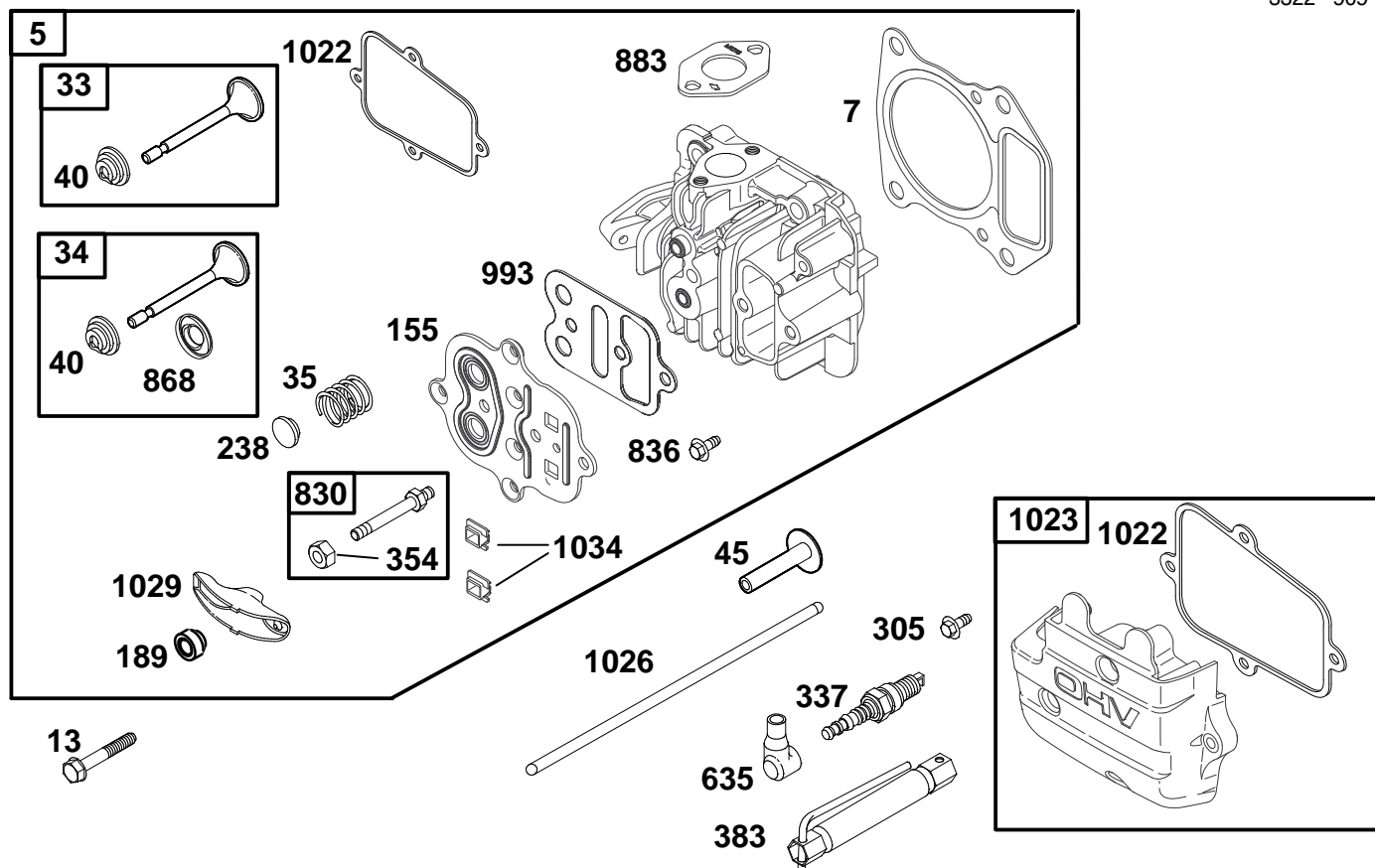
ENGINE GTS-200

| Ref. No. | Part No. | Description | No. Used |
|----------|----------|-----------------------|----------|
| 1 | 99-0900 | Cylinder Assembly | 1 |
| 2 | 99-0911 | Bushing | 1 |
| ★3 | 99-0912 | Seal - Oil | 1 |
| 8 | 77-9260 | Breather Assy. | 1 |
| †★9 | 99-0913 | Gasket - Breather | 1 |
| 10 | 99-0914 | Screw - Hex. | 1 |
| 11 | 99-0915 | Tube - Breather | 1 |
| ★116 | 99-0916 | Seal - O Ring | 1 |
| 227 | 99-0917 | Lever Assembly - Gov. | 1 |
| 230 | 99-0918 | Washer - Gov. Crank | 1 |
| 306 | 99-0919 | Shield - Cylinder | 1 |
| 307 | 99-0920 | Screw - Hex. | 1 |

★ Included in Gasket Set - Part No. 99-0902

| Ref. No. | Part No. | Description | No. Used |
|----------|----------|-------------------|----------|
| 523 | 77-7260 | Dipstick | 1 |
| 525 | 99-0906 | Tube - Oil Filler | 1 |
| 562 | 99-0921 | Screw - Hex. | 1 |
| 584 | 99-0922 | Baffle - Cylinder | 1 |
| ★585 | 99-0923 | Gasket - Breather | 1 |
| 592 | 99-0924 | Nut - Hex. | 1 |
| 615 | 99-0925 | Fastener | 1 |
| 616 | 99-0926 | Crank - Governor | 1 |
| 663 | 99-0927 | Screw - Hex. | 1 |
| 718 | 99-0928 | Dowel - Sleeve | 1 |

† Included in Valve Overhaul Gasket Set - Part No. 99-0904



Assemblies include all parts shown in frames.

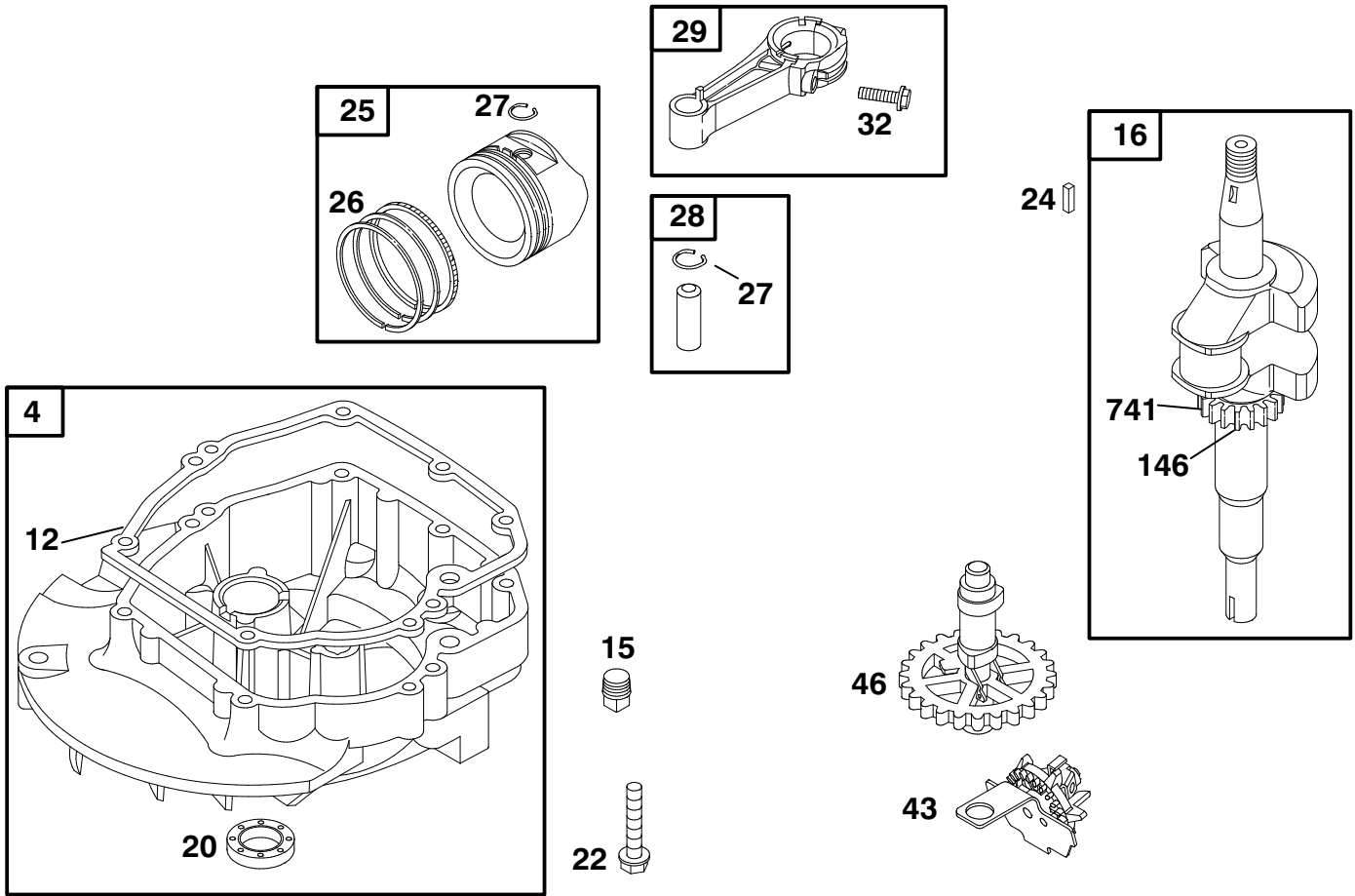
ENGINE GTS-200

| Ref. No. | Part No. | Description | No. Used |
|----------|----------|----------------------------------|----------|
| 5 | 99-0929 | Head - Cylinder | 1 |
| †★7 | 99-0930 | Gasket - Cylinder Head | 1 |
| 13 | 99-0931 | Screw - Hex. | 1 |
| 33 | 99-0932 | Valve - Exhaust | 1 |
| 34 | 99-0933 | Valve - Intake | 1 |
| 35 | 99-0934 | Spring - Valve | 1 |
| 40 | 99-0935 | Retainer - Valve Spring | 1 |
| 45 | 99-0936 | Tappet - Valve | 1 |
| 155 | 99-0938 | Plate - Cylinder Head | 1 |
| 189 | 99-0939 | Ball - Rocker Arm | 1 |
| 238 | 99-0940 | Cap - Valve | 1 |
| 305 | 99-0942 | Screw - Hex. | 1 |
| 337 | 77-7330 | Plug - Spark | 1 |
| 354 | | Nut - Hex. (Sold in Kit Only) | 1 |

★ Included in Gasket Set-Part No. 99-0902

| Ref. No. | Part No. | Description | No. Used |
|----------|----------|-----------------------|----------|
| 383 | 99-0944 | Wrench - Spark Plug | 1 |
| 635 | 77-9190 | Elbow - Spark Plug | 1 |
| 830 | 99-0945 | Stud - Rocker Arm | 1 |
| 836 | 99-0941 | Screw - Hex. | 1 |
| †★868 | 99-0946 | Seal - Valve | 1 |
| †★883 | 99-0947 | Gasket - Exhaust | 1 |
| †★993 | 99-6264 | Gasket - Plate | 1 |
| †★1022 | 99-0907 | Gasket - Rocker Cover | 1 |
| 1023 | 98-9211 | Cover - Rocker | 1 |
| 1026 | 99-0949 | Rod - Push | 1 |
| 1029 | 99-0950 | Arm - Rocker | 1 |
| 1034 | 99-0951 | Guide - Push Rod | 1 |

† Included in Valve Overhaul Gasket Set-Part No. 99-0904



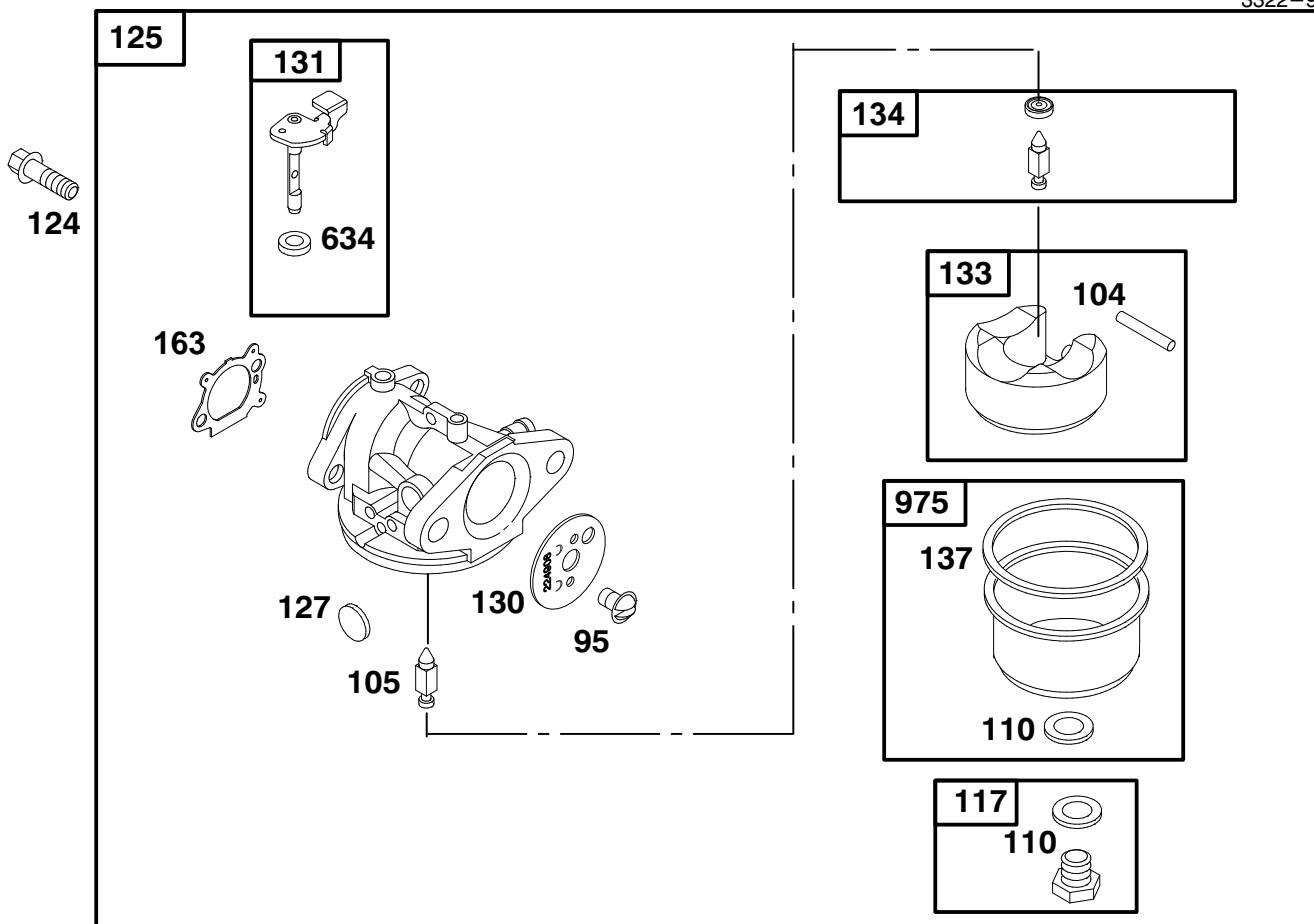
Assemblies include all parts shown in frames.

ENGINE GTS-200

| Ref. No. | Part No. | Description | No. Used |
|----------|----------|---|----------|
| 4 | 99-0952 | Sump - Engine | 1 |
| ★12 | 99-0953 | Gasket - Crankcase | 1 |
| 15 | 99-0954 | Plug - Oil Drain | 1 |
| 16 | 98-9214 | Crankshaft | 1 |
| ★20 | 77-7570 | Seal - Oil | 1 |
| 22 | 99-0956 | Screw - Hex. | 1 |
| | | Note: 99-1040 Screw - Hex. (One (1) Used in Hole Nearest Breather.) | 1 |
| 24 | 77-8340 | Key - Flywheel | 1 |

| Ref. No. | Part No. | Description | No. Used |
|----------|----------|-------------------------|----------|
| 25 | 99-0958 | Piston Assy. (Standard) | 1 |
| 26 | 99-0959 | Ring Set (Standard) | 1 |
| 27 | 99-0960 | Lock - Piston Pin | 1 |
| 28 | 99-0961 | Pin - Piston (Standard) | 1 |
| 29 | 99-0962 | Rod - Connecting | 1 |
| 32 | 99-0963 | Screw - Connecting Rod | 1 |
| 43 | 99-0964 | Governor/Oil Slinger | 1 |
| 46 | 99-0965 | Gear - Cam | 1 |
| 146 | 99-0966 | Key - Timing | 1 |
| 741 | 99-0967 | Gear - Timing | 1 |

★ Included in Gasket Set - Part No. 99-0902



Assemblies include all parts shown in frames.

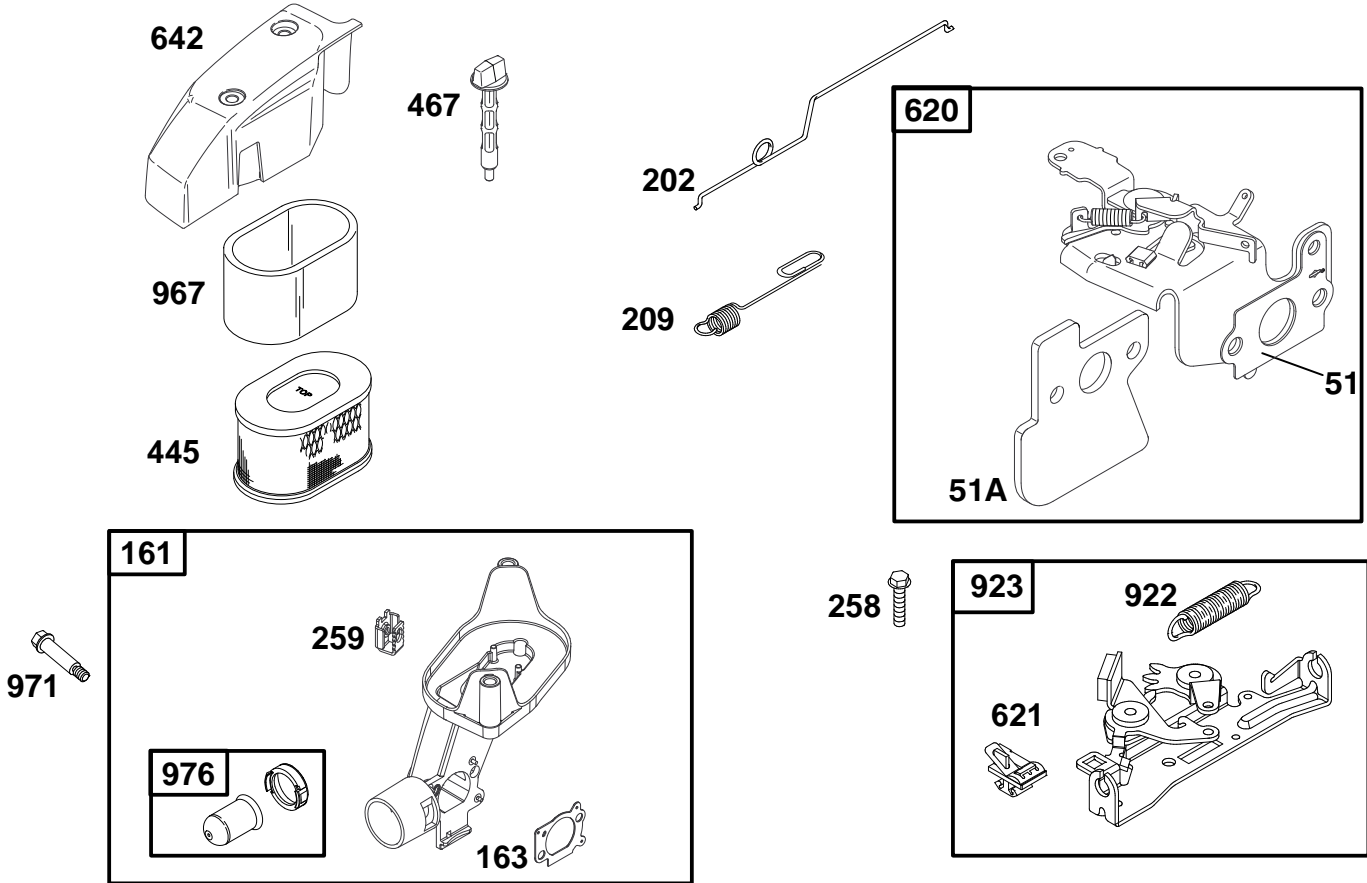
ENGINE GTS-200

| Ref. No. | Part No. | Description | No. Used |
|----------|----------|--|----------|
| 95 | 99-0969 | Screw - Slotted | 1 |
| ●104 | 99-0970 | Pin - Float Hinge | 1 |
| ◆◆110 | | Washer - Bowl (Sold in Kit Only). | 1 |
| 117 | 99-0971 | Jet - Main (Std.) Note: 99-1041 Jet - Main (High Altitude) | 1 |
| 124 | 99-0972 | Screw - Shoulder | 1 |
| 125 | 99-0973 | Carburetor | 1 |
| ●127 | | Plug - Welch (Sold in Kit Only). | 1 |

| Ref. No. | Part No. | Description | No. Used |
|----------|----------|--------------------------------------|----------|
| 130 | 99-0974 | Valve - Throttle | 1 |
| 131 | 99-0975 | Shaft - Throttle | 1 |
| 133 | 77-8170 | Float - Carburetor | 1 |
| ●134 | 77-8110 | Valve - Needle | 1 |
| ◆◆137 | | Gasket - Bowl (Sold in Kit Only). | 1 |
| ◆◆*163 | 99-0976 | Gasket - Air Cleaner | 1 |
| ◆◆634 | | Washer - Foam (Sold in Kit Only). | 1 |
| 975 | 99-0977 | Bowl - Float | 1 |

● Included in Carburetor Kit-Part No. 99-0901
◆ Included in Carburetor Gasket Set-Part No. 99-0903

* Included in Gasket Set-Part No. 99-0902
† Included in Valve Overhaul Gasket Set-Part No. 99-0904



Assemblies include all parts shown in frames.

ENGINE GTS-200

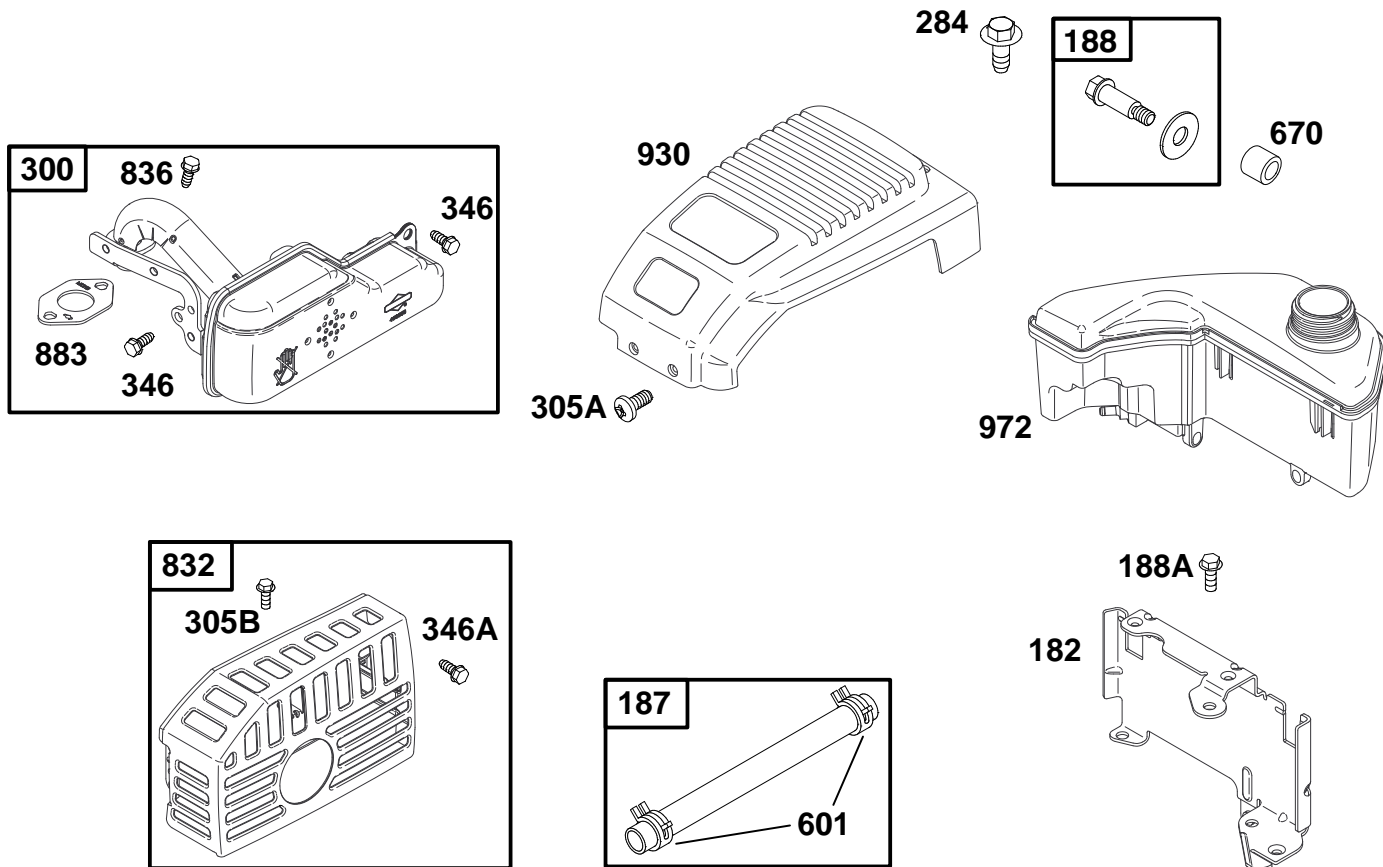
| Ref. No. | Part No. | Description | No. Used |
|----------|----------|---------------------------|----------|
| 51 | 99-0968 | Gasket - Intake | 1 |
| 51A | 99-0978 | Gasket - Intake | 1 |
| 161 | 99-0979 | Base - Air Cleaner/Primer | 1 |
| ◆♦★163 | 99-0976 | Gasket - Air Cleaner | 1 |
| 202 | 99-0981 | Link - Governor | 1 |
| 209 | 99-0982 | Spring - Governor | 1 |
| 258 | 99-0983 | Screw - Hex. | 1 |
| 259 | 99-0984 | Grommet | 1 |
| 445 | 98-9212 | Filter - Air | 1 |

| Ref. No. | Part No. | Description | No. Used |
|----------|----------|---------------------|----------|
| 467 | 98-9208 | Knob | 1 |
| 620 | 99-0985 | Bracket - Control | 1 |
| 621 | 99-0986 | Switch - Stop | 1 |
| 642 | 98-9207 | Cover - Air Cleaner | 1 |
| 922 | 99-0987 | Spring - Brake | 1 |
| 923 | 99-0988 | Brake Assembly | 1 |
| 967 | 99-0989 | Filter - Air | 1 |
| 971 | 99-0990 | Screw - Hex. | 1 |
| 976 | 99-0991 | Primer - Carburetor | 1 |

◆ Included in Carburetor Kit - Part No. 99-0901

♦ Included in Carburetor Gasket Set - Part No. 99-0903

★ Included in Gasket Set - Part No. 99-0902



Assemblies include all parts shown in frames.

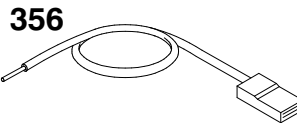
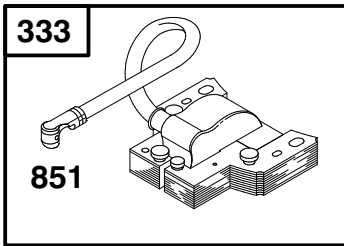
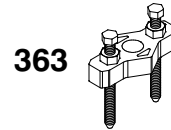
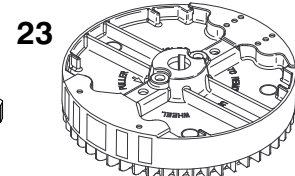
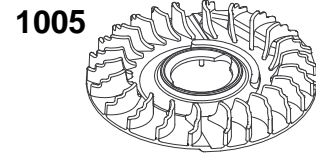
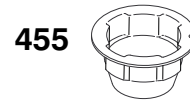
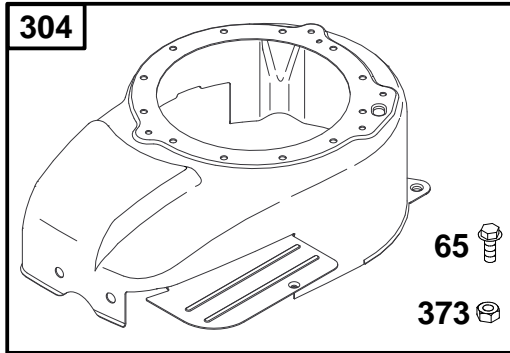
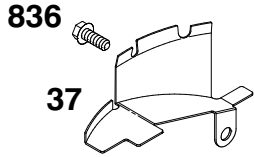
ENGINE GTS-200

| Ref. No. | Part No. | Description | No. Used |
|----------|----------|---|----------|
| 182 | 98-9205 | Bracket - Tank Mounting | 1 |
| 187 | 99-0922 | Line - Fuel (Cut to Required Length) | 1 |
| 188 | 99-0993 | Screw - Shoulder | 1 |
| 188A | 98-9202 | Screw - Hex. | 1 |
| 284 | 99-0994 | Screw - Hex. | 1 |
| 300 | 99-0995 | Muffler - Exhaust | 1 |
| 305A | 98-9204 | Screw - Torx® | 1 |
| 305B | 99-0998 | Screw - Hex. | 1 |

* Included in Gasket Set - Part No. 99-0902

| Ref. No. | Part No. | Description | No. Used |
|----------|----------|--------------------|----------|
| 346 | 99-1047 | Screw - Hex. | 1 |
| 346A | 99-0999 | Screw - Hex. | 1 |
| 601 | 99-0996 | Clamp - Hose | 1 |
| 670 | 99-0997 | Spacer - Fuel Tank | 1 |
| 832 | 98-9206 | Guard - Muffler | 1 |
| 836 | 99-0941 | Screw - Hex. | 1 |
| †*883 | 99-0947 | Gasket - Exhaust | 1 |
| 930 | 98-9203 | Guard - Rewind | 1 |
| 972 | 99-1000 | Tank - Fuel | 1 |

† Included in Valve Overhaul Gasket Set - Part No. 99-0904



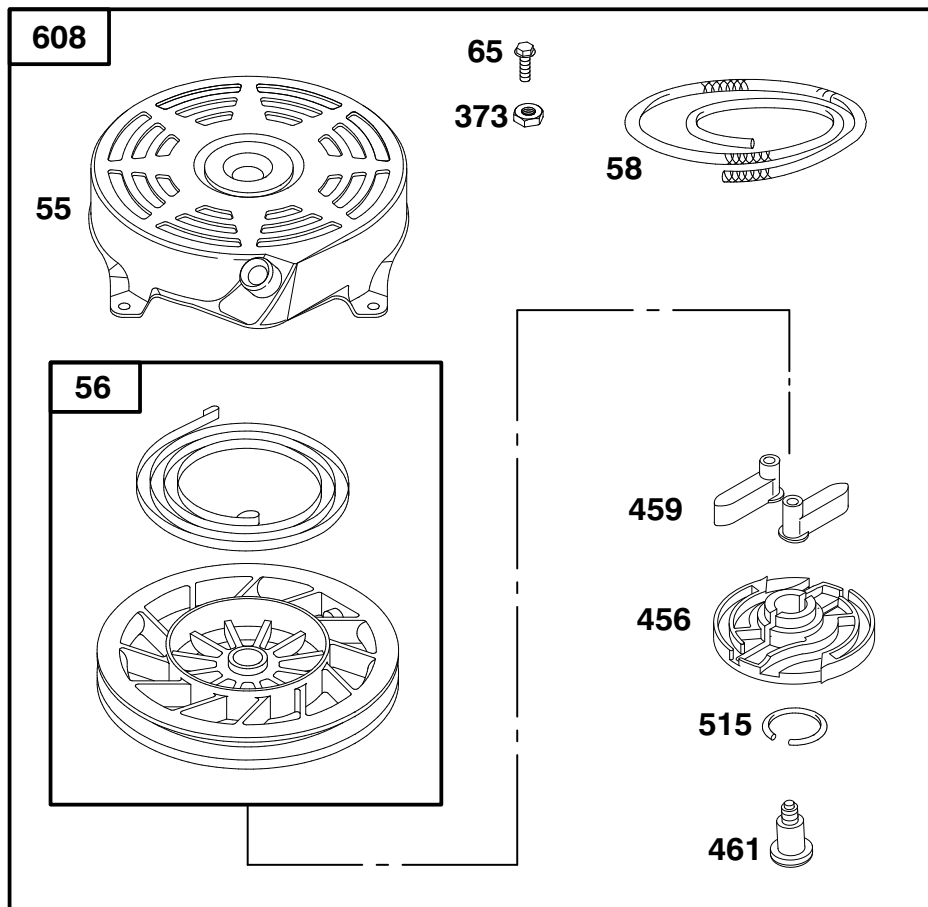
1036 LABEL KIT-EMISSION

Assemblies include all parts shown in frames.

ENGINE GTS-200

| Ref. No. | Part No. | Description | No. Used |
|----------|----------|--------------------|----------|
| 23 | 99-1001 | Flywheel | 1 |
| 37 | 99-0905 | Guard - Flywheel | 1 |
| 65 | 99-1002 | Screw - Hex. | 1 |
| 304 | 99-1003 | Housing - Blower | 1 |
| 332 | 99-1004 | Nut - Flywheel | 1 |
| 333 | 99-1005 | Armature - Magneto | 1 |
| 334 | 99-1006 | Screw - Hex. | 1 |
| 356 | 99-1007 | Wire - Stop | 1 |

| Ref. No. | Part No. | Description | No. Used |
|----------|----------|----------------------|----------|
| 363 | 99-1008 | Puller - Flywheel | 1 |
| 373 | 99-1009 | Nut - Hex. | 1 |
| 455 | 99-1010 | Cup - Flywheel | 1 |
| 836 | 99-0941 | Screw - Hex. | 1 |
| 851 | 77-9450 | Terminal - Cable | 1 |
| 1005 | 99-1015 | Fan - Flywheel | 1 |
| 1036 | 99-1016 | Label Kit - Emission | 1 |

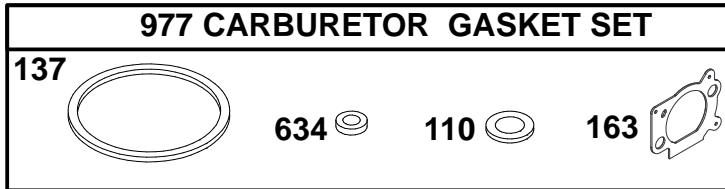
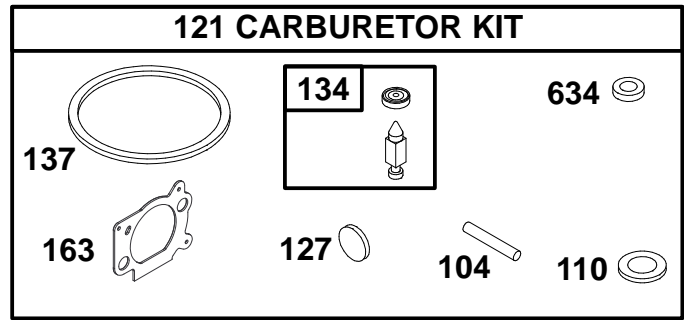
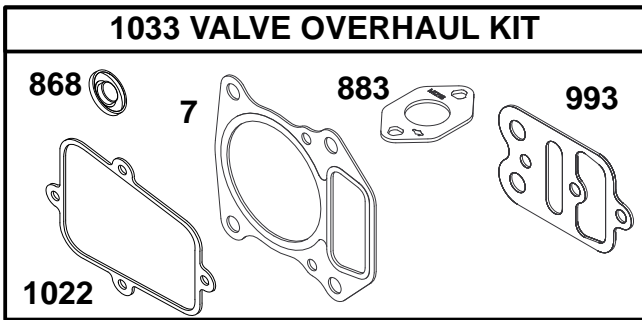
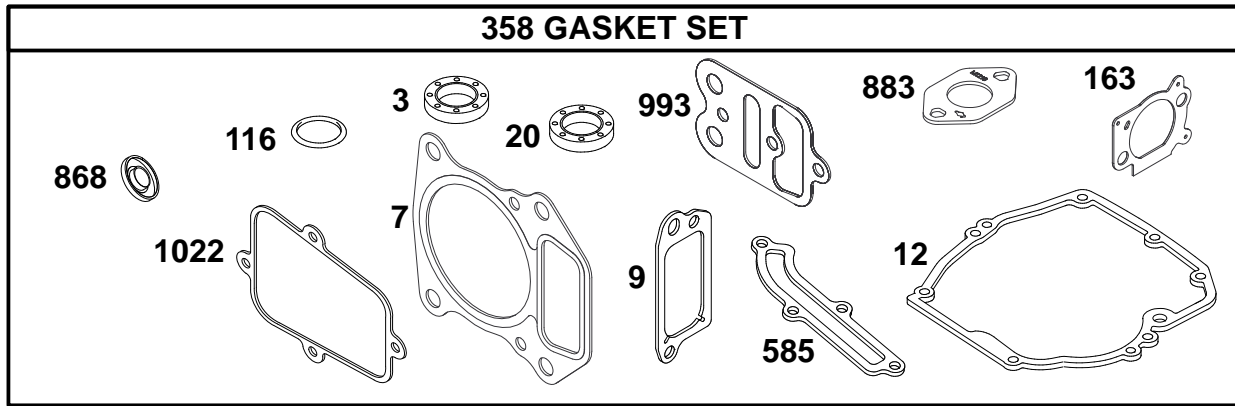


Assemblies include all parts shown in frames.

ENGINE GTS-200

| Ref. No. | Part No. | Description | No. Used |
|----------|----------|--------------------------|----------|
| 55 | 99-1048 | Housing - Rewind Starter | 1 |
| 56 | 94-1657 | Pulley - Starter | 1 |
| 58 | 94-1668 | Rope - Starter | 1 |
| 59 | 77-7210 | Insert - Starter Grip | 1 |
| 60 | 77-8520 | Grip - Starter Rope | 1 |
| 65 | 99-1002 | Screw - Hex. | 1 |

| Ref. No. | Part No. | Description | No. Used |
|----------|----------|-------------------|----------|
| 373 | 99-1009 | Nut - Hex. | 1 |
| 456 | 94-1659 | Retainer - Spring | 1 |
| 459 | 94-1654 | Pawl - Ratchet | 1 |
| 461 | 94-1600 | Screw - Shoulder | 1 |
| 515 | 94-1655 | Spring - Friction | 1 |
| 608 | 98-9215 | Starter - Rewind | 1 |



Assemblies include all parts shown in frames.

ENGINE GTS-200

| Ref. No. | Part No. | Description | No. Used |
|----------|----------|--------------------------------------|----------|
| ★3 | 99-0912 | Seal - Oil | 1 |
| †★7 | 99-0930 | Gasket - Cylinder Head | 1 |
| †★9 | 99-0913 | Gasket - Breather | 1 |
| ★12 | 99-0953 | Gasket - Crankcase | 1 |
| ★20 | 77-7570 | Seal - Oil | 1 |
| ●104 | 99-0970 | Pin - Float Hinge | 1 |
| ◆◆110 | | Washer - Bowl (Sold in Kit Only). | 1 |
| ★116 | 99-0916 | Seal - O Ring | 1 |
| 121 | 99-0901 | Carburetor Kit | 1 |
| ●127 | | Plug - Welch (Sold in Kit Only). | 1 |
| ●134 | 77-8110 | Valve - Needle | 1 |
| ◆◆137 | | Gasket - Bowl (Sold in Kit Only). | 1 |

| Ref. No. | Part No. | Description | No. Used |
|----------|----------|--------------------------------------|----------|
| ◆◆★163 | 99-0971 | Gasket - Air Cleaner | 1 |
| 358 | 99-0902 | Gasket Set | 1 |
| ★585 | 99-0923 | Gasket - Breather | 1 |
| ◆◆634 | | Washer - Foam (Sold in Kit Only). | 1 |
| †★868 | 99-0946 | Seal - Valve | 1 |
| †★883 | 99-0947 | Gasket - Exhaust | 1 |
| 977 | 99-0903 | Gasket Set - Carburetor | 1 |
| †★993 | 99-0948 | Gasket - Plate | 1 |
| †★1022 | 99-0907 | Gasket - Rocker Cover | 1 |
| 1033 | 99-0904 | Gasket Set - Valve Overhaul | 1 |

● Included in Carburetor Kit - Part No. 99-0901
 ◆ Included in Carburetor Gasket Set - Part No. 99-0903

★ Included in Gasket Set - Part No. 99-0902
 † Included in Valve Overhaul Gasket Set - Part No. 99-0904

Toro Part Number Index

| Part No. | Page No. | Ref. No. | Qty. | Description |
|----------|----------|----------|------|----------------------|
| 603773 | 1 | 42 | 2 | Nut-Lock |
| 603773 | 3 | 24 | 2 | Nut-Lock |
| 3-3287 | 5 | 5 | 2 | Spacer |
| 11-0189 | 6 | 0 | 1 | ASM-Bag |
| 19-4050 | 5 | 12 | 2 | Knob |
| 25-7740 | 1 | 21 | 2 | Knob-Arm |
| 25-7740 | 3 | 22 | 2 | Knob-Arm |
| 26-0670 | 2 | 15 | 1 | Bolt-Blade |
| 27-6232 | 1 | 26 | 2 | Bolt-Wheel HH |
| 27-6250 | 3 | 20:1 | 4 | Bushing |
| 27-7210 | 5 | 4 | 2 | Screw-Shoulder |
| 27-7211 | 5 | 8 | 2 | Screw-Shoulder |
| 29-9570 | 4 | 21 | 1 | Bushing-Yoke |
| 33-3208 | 1 | 16 | 1 | Rod-Shield |
| 33-4820 | 6 | 3 | 1 | Hinge-Door |
| 36-4780 | 4 | 9 | 1 | Washer-Thrust |
| 36-4791 | 4 | 4 | 2 | Washer-Thrust |
| 36-6910 | 6 | 6 | 2 | Spring |
| 37-1393 | 6 | 1 | 1 | Door-Bag |
| 37-7260 | 1 | 31 | 2 | Screw-TAP |
| 38-7820 | 4 | 31 | 1 | Bearing-Ball |
| 40-1940 | 1 | 19 | 4 | Washer |
| 42-3520 | 3 | 5 | 2 | Cap-End |
| 42-4020 | 6 | 7 | 1 | Frame-Bag |
| 42-4030 | 6 | 4 | 1 | Frame-Bag |
| 43-1362 | 5 | 1 | 1 | ASM-Handle |
| 44-0522 | 6 | 2 | 1 | Bag-Grass |
| 44-0580 | 1 | 15 | 1 | Shield-Trailing |
| 46-5481 | 5 | 33 | 1 | Cable-Traction |
| 46-5520 | 5 | 24 | 1 | Lever-Traction |
| 46-6290 | 1 | 1:9 | 1 | 0-Ring |
| 46-6440 | 5 | 34 | 1 | Cover-Cables |
| 46-6810 | 1 | 14 | 1 | Screw HWH |
| 46-6811 | 1 | 1:5 | 2 | Screw-HWH |
| 46-6811 | 1 | 13 | 3 | Screw-HWH |
| 46-6980 | 5 | 27 | 1 | Support-Cable |
| 46-8090 | 1 | 36 | 2 | Screw-Tapping |
| 48-2060 | 3 | 8:2 | 2 | Bearing-Needle |
| 49-1630 | 5 | 23 | 2 | Spacer-Support |
| 49-2040 | 1 | 34 | 2 | Screw-HH |
| 49-2040 | 4 | 20 | 6 | Screw-HH |
| 52-7430 | 5 | 19 | 1 | Bar-Control |
| 55-3760 | 4 | 3 | 1 | 15 T Pinion |
| 55-3770 | 4 | 11 | 1 | Gear 49t 1st Gear |
| 55-3780 | 4 | 2 | 1 | Pinion 20t 2nd Gear |
| 55-3790 | 4 | 12 | 1 | Gear 44t 2nd Gear |
| 55-3800 | 4 | 1 | 1 | Pinion 25t 3rd Gear |
| 55-3810 | 4 | 13 | 1 | Gear 39t 3rd Gear |
| 60-8710 | 4 | 18 | 1 | Gearcase-Upper 3 Sp |
| 60-8730 | 4 | 19 | 1 | Cover-Gearcase |
| 60-8750 | 4 | 5 | 2 | Bushing |
| 60-8770 | 4 | 8 | 1 | Bushing-Output Shaft |
| 60-8790 | 4 | 14 | 1 | Sleeve-Gear |
| 60-8800 | 4 | 17 | 1 | Shaft-Intermediate |
| 60-8810 | 4 | 22 | 1 | Retainer-Shift-Fork |
| 60-8821 | 3 | 2 | 1 | Lever-Shift |
| 60-8850 | 4 | 32 | 1 | Bushing-Output |
| 60-8870 | 4 | 24 | 1 | Yoke-Shift |
| 60-8890 | 4 | 28 | 1 | Gear-Pinion |
| 62-3900 | 3 | 1 | 1 | V-Belt |
| 62-4320 | 1 | 33 | 1 | Bracket-Guide |
| 62-6660 | 4 | 26 | 1 | Spacer-Pulley |

*Not Illustrated

Toro Part Number Index (cont.)

| Part No. | Page No. | Ref. No. | Qty. | Description |
|----------|----------|----------|------|----------------------|
| 62-6673 | 1 | 32 | 1 | ASM-Gearcase |
| 62-6673 | 4 | | 1 | Gear Case Complete |
| 62-7550 | 2 | 10 | 1 | Pulley-Driver |
| 63-8701 | 3 | 8 | 2 | ASM |
| 63-8721 | 3 | 6 | 2 | ASM-Arm |
| 65-2720 | 3 | 11 | 4 | Ring-Retaining |
| 65-4710 | 3 | 12 | 2 | Ring-Friction |
| 65-4720 | 3 | 17 | 2 | Spring-Compression |
| 65-4730 | 3 | 9 | 2 | Washer-Thrust |
| 65-4740 | 3 | 10 | 4 | Washer-Thrust |
| 65-4750 | 3 | 16 | 2 | Gear-Pinion |
| 65-4760 | 3 | 13 | 2 | Washer |
| 65-4770 | 4 | 23 | 1 | Shaft-Output |
| 65-5250 | 4 | 36 | 1 | Clip-Spring |
| 66-0541 | 1 | 20 | 2 | ASM-Spring Arm |
| 66-0560 | 1 | 24 | 2 | Screw-Shoulder |
| 66-0570 | 2 | 9 | 1 | Guide-Belt |
| 66-0580 | 1 | 23 | 2 | Arm-Pivot |
| 66-5351 | 5 | 20 | 1 | Lever-Control |
| 66-6040 | 3 | 15 | 1 | Key-Locking RH |
| 66-6050 | 3 | 14 | 1 | Key-Rocking LH |
| 70-9760 | 3 | 8:5 | 2 | Bushing |
| 71-9350 | 1 | 38 | 1 | Spring-Bracket |
| 74-1660 | 3 | 18 | 2 | Cover-Wheel |
| 74-1671 | 3 | 19 | 2 | Spacer-Cover |
| 76-0760 | 4 | 38 | 2 | Key-Shift |
| 76-0770 | 4 | 34 | 1 | Collar-Shift |
| 76-0780 | 4 | 37 | 1 | Sleeve-Shift Key |
| 76-2712 | 5 | 30 | 1 | Control-Speed |
| 76-4331 | 5 | 32 | 1 | Cable-Brake |
| 76-4640 | 1 | 3:2 | 1 | Latch Discharge Plug |
| 76-4650 | 1 | 3:4 | 1 | Grip Latch |
| 76-4660 | 1 | 35 | 1 | Spring-Extension |
| 77-0502 | 1 | 3 | 1 | ASM-Plug |
| 80-3770 | 1 | 12 | 1 | Retainer-Door |
| 82-5680 | 1 | 27 | 1 | Bracket-Adjustment |
| 82-8780 | 3 | 4 | 1 | Retainer-Cable |
| 82-9151 | 1 | 10 | 1 | Tunnel-Discharge |
| 84-8361 | 5 | 2 | 1 | Latch-Handle |
| 84-8401 | 5 | 3 | 1 | Latch-Handle |
| 86-9671 | 5 | 29 | 1 | Guide-Rope |
| 92-1057 | 3 | 25 | 2 | Bolt-Wheel HH |
| 92-1057 | 1 | 25:1 | 4 | Bushing |
| 92-1720 | 1 | 1:2 | 1 | Kicker-RH |
| 92-1730 | 1 | 1:3 | 1 | Kicker-LH |
| 92-1750 | 1 | 1:1 | 1 | Plate-Kicker Rear |
| 92-2260 | 5 | 11 | 4 | Screw-Handle |
| 92-2269 | 5 | 26 | 1 | Screw-Handle |
| 92-2289 | 2 | 3 | 1 | Plate-Logo |
| 92-7663 | 3 | 21 | 1 | Cover-Wheel |
| 92-7859 | 5 | 13:3 | 1 | Decal-Panel |
| 92-9592 | 1 | 25 | 2 | Wheel & Tire-ASM |
| 92-9665 | 5 | 18 | 5 | Screw-Phil |
| 93-3154 | 1 | 11 | 1 | Plate-Latch |
| 93-4106 | 2 | 12 | 1 | Blade-Generation Iii |
| 93-4107 | 2 | 11 | 1 | Retainer-Blade |
| 93-6655 | 5 | 13:1 | 1 | Decal-Danger |
| 93-7198 | 2 | 2 | 1 | ASM-Cap |
| 93-7351 | 1 | 37 | 1 | ASM-Door |
| 93-8470 | 2 | 7 | 1 | Screw-Clamp |
| 94-1608 | 2 | 13 | 1 | Stiffener-Blade |
| 94-4922 | 5 | 9 | 1 | ASM-Handle |

*Not Illustrated

Toro Part Number Index (cont.)

| Part No. | Page No. | Ref. No. | Qty. | Description |
|-----------|----------|----------|------|-------------------|
| 94-5407 | 1 | 2 | 1 | Decal-Deck |
| 95-2747 | 1 | 1:8 | 1 | Fitting-Washout |
| 95-5615 | 1 | 1 | 1 | Housing-Rwd |
| 98-1501 | 5 | 31 | 1 | Control-Throttle |
| 98-1502 | 1 | 30 | 1 | Cover-Belt |
| 98-2004 | 2 | 4 | 1 | Decal-Engine |
| 98-2020 | 5 | 13:2 | 1 | Decal-Instruction |
| 98-9232 | 5 | 13 | 1 | Panel-Control |
| 99-8136 | 3 | 20 | 2 | Wheel-ASM |
| 100-1176 | 4 | 27 | 2 | Pulley-Half |
| 2210-249 | 2 | 6 | 1 | Clamp-Casing |
| 2210-316 | 2 | 5 | 1 | Rope-Stop |
| 237-153 | 3 | 7 | 2 | O-Ring |
| 2412-50 | 5 | 35 | 3 | Clip-Tubing |
| 302-56 | 3 | 8:4 | 2 | Fitting-Grease |
| 321-39 | 5 | 21 | 1 | Screw-HH |
| 3253-22 | 2 | 14 | 1 | Washer-Lock |
| 3256-1 | 5 | 28 | 1 | Washer-Flat |
| 3256-24 | 4 | 30 | 1 | Washer-Flat |
| 3272-10 | 3 | 3 | 1 | Pin-Cotter |
| 3290-378 | 5 | 36 | 4 | Tie-Cable |
| 3290-422 | 6 | 5 | 2 | Nut-Push |
| 3295-35 | 1 | 3:3 | 1 | Rivet Solid |
| 3296-5 | 4 | 29 | 1 | Nut-Lock |
| 3296-6 | 1 | 18 | 2 | Nut-Lock |
| 3296-47 | 5 | 6 | 1 | Nut-Lock |
| 3296-72 | 5 | 7 | 3 | Nut-Lock |
| 3296-73 | 5 | 22 | 3 | Nut-Lock |
| 3296-74 | 5 | 25 | 2 | Nut-Flange |
| 32121-120 | 4 | 15 | 1 | Pin-Coil |
| 32144-70 | 1 | 1:6 | 4 | Screw-TAP |
| 32144-70 | 1 | 28 | 1 | Screw-TAP |
| 32144-70 | 2 | 17 | 2 | Screw-TAP |
| 32144-70 | 3 | 26 | 1 | Screw-TAP |
| 32144-85 | 1 | 22 | 2 | Screw-HH |
| 32144-85 | 3 | 23 | 2 | Screw-HH |
| 32144-102 | 2 | 8 | 3 | Screw |
| 32144-111 | 1 | 1:4 | 6 | Screw - PPH |

*Not Illustrated

