

TORO

1968
19" WHIRLWIND - H.P.

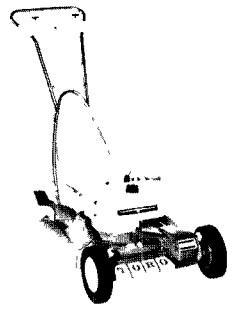
MODEL NOS. 18221-800001 & UP
(SPIN START)

**21" WHIRLWIND -
H.P.**

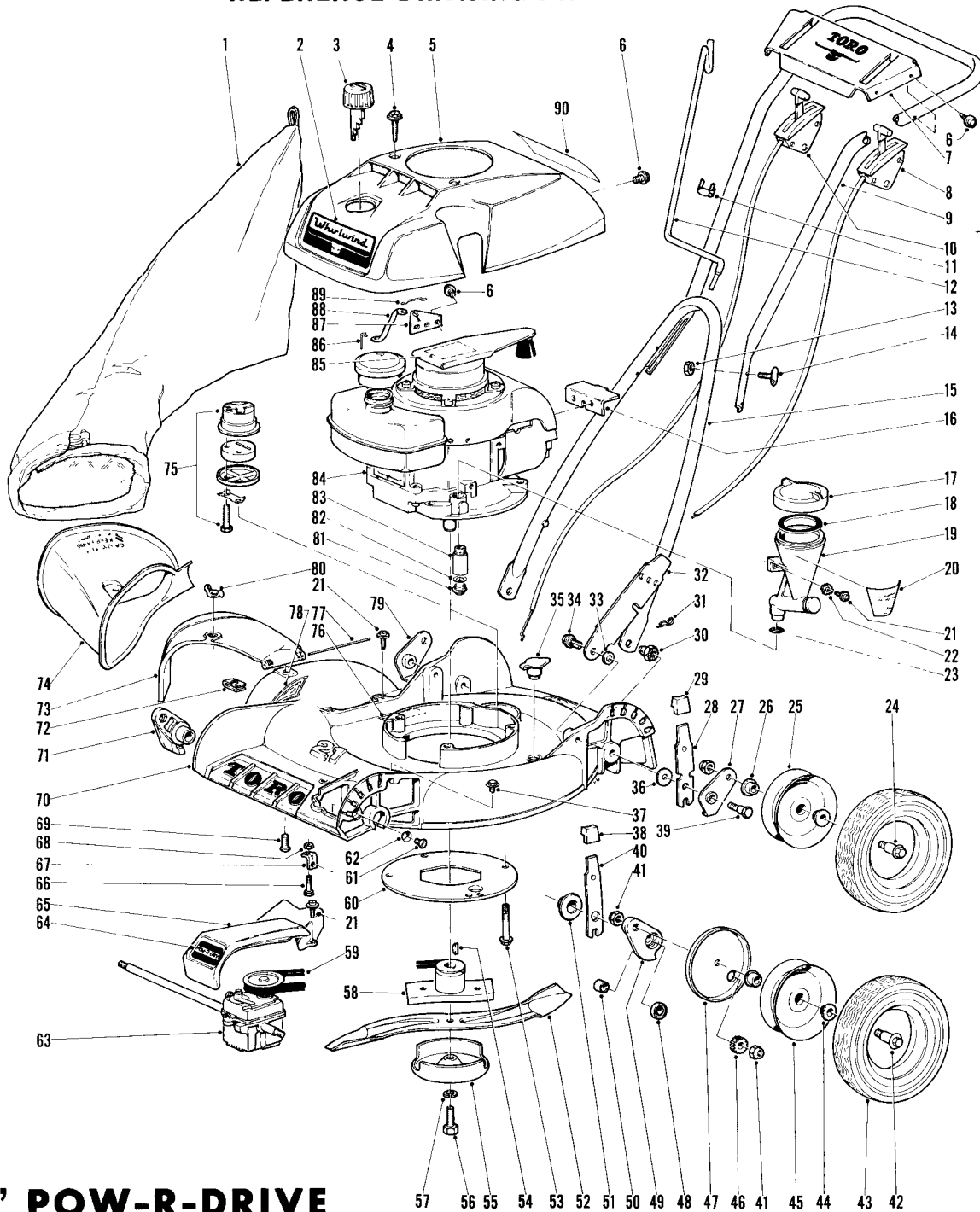
MODEL NOS. 19221-800001 & UP

**21" WHIRLWIND -
POW-R-DRIVE**

MODEL NOS. 20222-800001 & UP



REFERENCE DRAWING AND PARTS LIST



21" POW-R-DRIVE

21'' POW-R-DRIVE PARTS LIST

Ref. No.	Part No.	Description	No. Used
1	81064	Bag - Set of 2	1
2	5-3304	Decal - Whirlwind	1
3	5-3460	Assembly, Cas Cap	1
4	32104-88	Screw, Self Tapping	2
5	5-3327	Shroud	1
6	32104-76	Screw, Self Tapping	7
7	5-0638	Plate, Escutcheon	1
8	5-3332	Assembly, Traction Control	1
9	5-0645	Handle, Upper	1
10	5-3316	Assembly, Throttle Control	1
11	218-75	Clip	2
12	3-0690	Hanger, Bag	1
13	32146-8	Nut	4
14	3-2654	Screw, Handle	4
15	3-9430	Handle, Lower	1
16	5-3307	Bracket, Rear	1
17	3-8429	Cap, Reservoir w/Ring Ref. 18	1
18	5-1391	"O" Ring	1
19	5-0625	Assembly, Oil Reservoir	1
20	5-2947	Decal, Reservoir	1
21	32104-75	Screw, Self Tapping	6
22	3290-261	Washer	2
23	237-65	"O" Ring	1
24	3-2652	Bolt, Wheel	2
25	3-7350	Wheel, Rear w/Bshg. Ref. 26	2
26	3-5116	Bushing	4
27	3-2634	Arm, Pivot	1
28	3-2637	Assembly, Arm	2
29	5-0656	Knob	2
30	3-6482	Nut, Handle Pivot	2
31	3290-255	Hairpin Cotter	2
32	5-2446	Latch, Handle	2
33	3-3287	Spacer	2
34	5-2490	Screw, Shoulder	2
35	5-0655	Plug, Washout	1
36	3-5956	Washer, Pivot	2
37	32104-82	Screw, Self Tapping	1
38	5-0657	Knob	2
39	3-0655	Screw, Pivot	2
40	3-2640	Assembly, Arm	2
41	3296-5	Nut, Stop	6
42	3-5117	Bolt, Wheel	2
43	4-2600	Tire	4
44	3-5234	Bushing, Wheel	4
45	3-7570	Wheel w/Bshg. Ref. 44	2

Ref. No.	Part No.	Description	No. Used
46	3-0738	Gear	2
47	3-5235	Cover, Wheel	2
48	251-183	Bearing	1
49	2-6369	Arm, Pivot	1
50	256-1	Bushing	1
51	5-0745	Cap, End	2
52	5-1610	Blade	1
53	32140-49	Screw, Self Tapping	3
54	3257-3	Key	1
55	3-6292	Dish, Anti-Scalp	1
56	3-5246	Screw, Special	1
57	3253-22	Lockwasher	1
58	3-7286	Retainer, Blade	1
59	3-7274	Belt	1
60	3-7626	Guard, Grass	1
61	32108-20	Screw	1
62	3255-12	Lockwasher	1
63	4-0809	Assembly, Gear Case	1
64	5-3303	Decal, Belt Guard	1
65	5-3305	Guard, Belt	1
66	3-7281	Screw	1
67	3-7278	Bracket, Adjustment	1
68	3218-1	Nut	1
69	3290-133	Screw	1
70	5-3324	Housing	1
71	2-6359	Arm, Pivot	1
72	3290-199	Nut, Speed	1
73	5-3311	Deflector	1
74	5-3442	Attachment, Bag	1
75	2-9329	Assembly, Muffler	1
76	3-7643	Decal	1
77	3-2644	Pin, Hinge	1
78	5-1426	Decal, A. S. A.	1
79	3-2635	Arm, Pivot	1
80	32103-14	Nut, Wing	1
+81	27244	Plug, Oil Drain	1
+82	28833	Gasket, Oil Drain	1
83	3-0761	Extension, Oil Drain	1
84	221-288	Engine	1
85	3-7644	Decal	1
86	5-2517	Hook	1
87	5-2518	Pivot, Throttle	1
88	5-2521	Rod, Throttle	1
89	5-2520	Linkage, Throttle	1
90	5-3335	Decal	1

+ Obtain locally from your Lauson Dealer

SPECIFICATIONS

ENGINE: 19" (Impulse) LAV30-30265G; 21" H. P. - Toro LAV30-30265G; 21" Pow-R-Drive - Toro LAV35-40152G.

ENGINE SHROUD: Rigid Polyethylene

FUEL TANK CAPACITY: 1 quart

CUTTER BLADE: 19" - 19" long; 21" H.P. and 21" S.P. - 21" long, "S" shaped, hardened.

TRACTION CLUTCH (21" S.P.): Hand operated lever and control wire system mounted to escutcheon plate on upper handle which operates spiral jaw clutch in gear case on drive shaft.

FRONT WHEEL TRACTION DRIVE (21" S.P.): Special 3L V-belt, with an approximate 10 degree misalignment, running between two pulleys. The steel engine shaft pulley, integral with the blade hub, has a 2.0 eff. O.D.; the powdered iron worm shaft pulley, held with a D-shaped hole, has a 2.5 eff. O.D. The engine to gear box reduction is 1.27:1.

GEAR CASE (21" S.P.): Die cast aluminum case. Hardened and polished 4 thread steel worm supported by ball bearing and bronze bushings (6.25:1 reduction). Lubrication requirement: 2 oz. SAE 90 with extreme pressure characteristic.

WHEEL REDUCTION (21" S.P.): 14T Stressproof steel pinions on drive shaft supported by double sealed ball bearings to 42T laminated steel external spur gears riveted to wheel (3:1 reduction).

REDUCTION, ENGINE TO WHEEL (21" S.P.): 23.8:1

WHEELS: #18 ga. Steel disc with oil impregnated powdered metal bushings.

TIRES (19" and 21" H.P.):

Front - Semi-pneumatic 6 3/4 x 1.75 Toro tread

Rear - Semi-pneumatic 8 x 1.75 Toro tread

TIRES (21" S.P.): Semi-pneumatic 8 x 1.75 Toro tread

HEIGHT OF CUT: 1/2" to 3" by moving wheels, with hand operated levers.

WIDTH OF CUT: 19" and 21"

HOUSING: Die cast magnesium alloy, spiral grass chamber, right hand discharge. Symmetrical wheel locations. Hinged chute deflector.

HANDLE: 3/4" O.D. x #16 ga. welded steel tubing in separable halves. No tool, positive handle height adjustment.

THROTTLE CONTROL: Control wire and casing. Operating lever mounted to escutcheon plate on upper handle. Stop, run, and choke positions. Spin Start engines are equipped with positive mechanical interlock between starter release and throttle control.

DIMENSIONS:

Width: 19" - 22 1/2";

21" H.P. and 21" S.P. - 24 1/2"

Length: 19" - 29";

21" H.P. - 30 1/2"; 21" S.P. - 32 1/2"
w/o handle, wheels at 1" cut.

Height: 19" and 21" H.P. - 13 1/4" (Spin Start)

21" Pow-R-Drive - 14 1/2" (Spin Start)

WEIGHT: 19" - 51 pounds

21" H.P. - 54 pounds

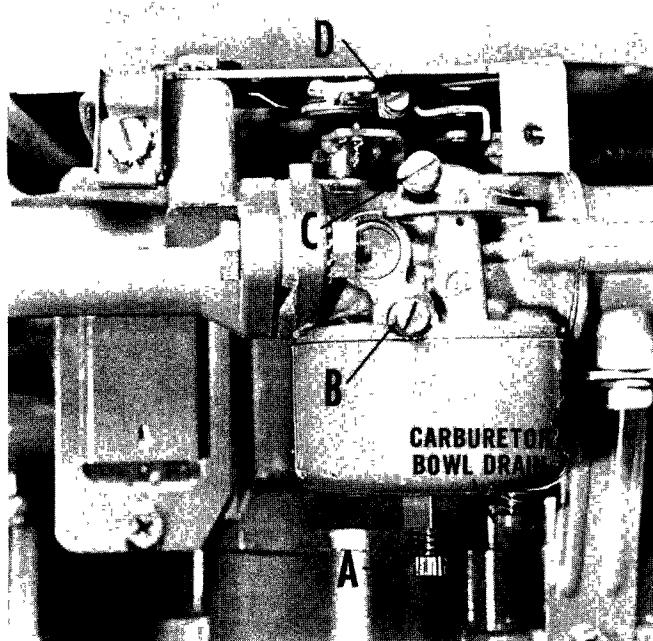
21" S.P. - 66 pounds

STANDARD EQUIPMENT:

Grass bag assembly, bagging chute,
bag hanger, anti-scalp dish, washout port,
"Auto-oiler" + visual oil filler.

+ Exclusive mark of Toro Manufacturing Corporation.

CARBURETOR ADJUSTMENTS



Main and idle screw adjustments are set at the factory for best performance. If it should become necessary to adjust the carburetor, proceed as follows:

HIGH SPEED ADJUSTMENTS

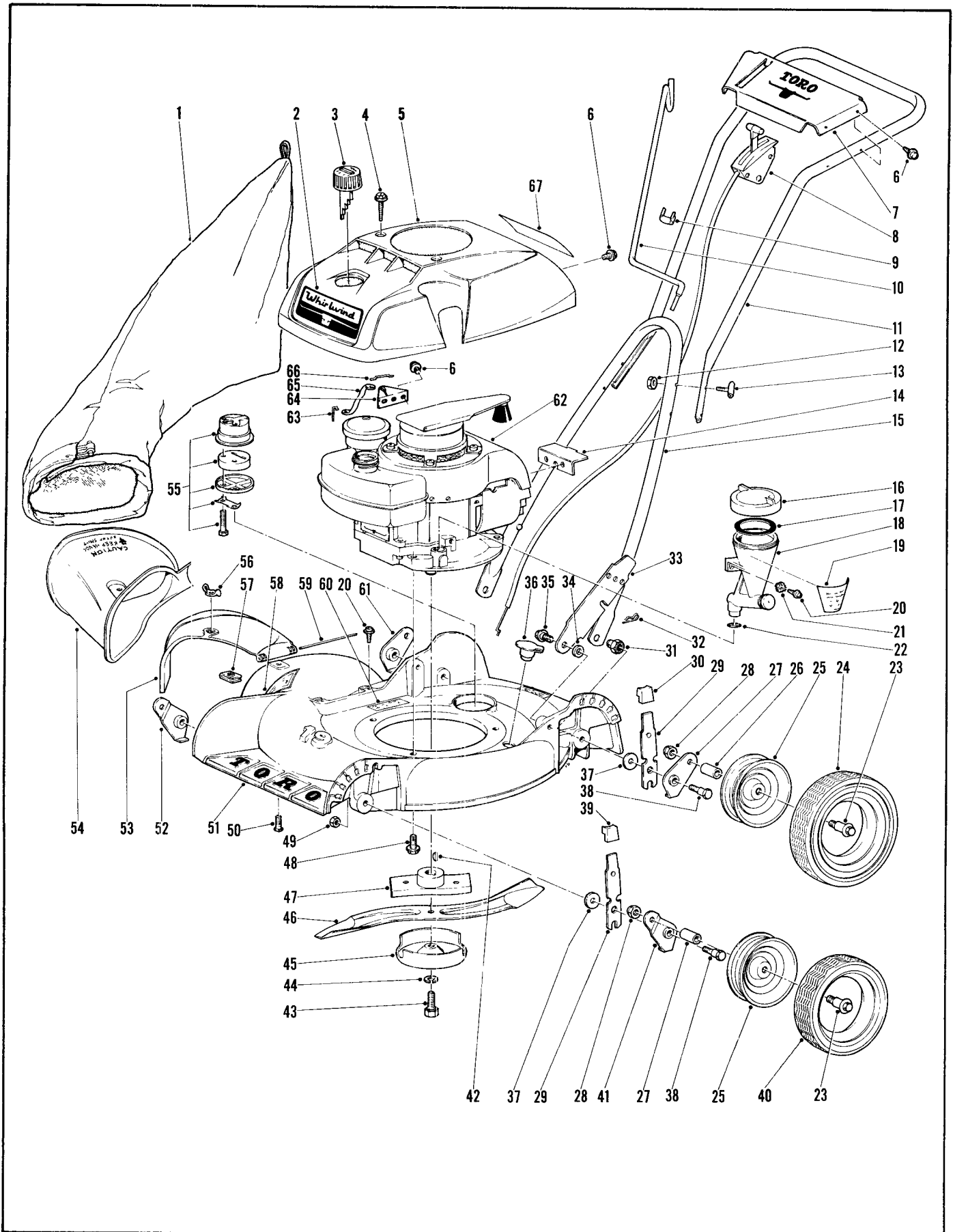
1. Initial adjustment, turn high speed adjusting screw "A" clockwise until finger tight.
2. Carefully turn high-speed adjusting screw "A" in a counterclockwise direction 1 turn.
3. After engine has warmed up, make final adjustments by turning adjusting screw an eighth of a turn at a time, allowing an interval between adjustments for the engine to react.
4. If engine speed is not high enough, adjust high speed by turning screw "D". After increasing speed, make final high speed carburetor adjustments with high speed adjusting screw "A". Allow setting to be slightly rich to compensate for load. Turn counterclockwise to richen mixture.

IDLE ADJUSTMENTS

Set throttle control lever in idle position.

1. Turn idle adjusting screw "B" clockwise until finger tight.
2. Turn counterclockwise 5/8 turn to open. After engine is started, make final adjustments by turning screw an eighth of a turn at a time, allowing time between turns for engine to react. Turn clockwise to richen mixture.
3. Idle speed can be adjusted by turning screw "C". After making speed adjustment, make final idle adjustment by turning screw "B".

19" AND 21" H.P. MOWER DRAWING

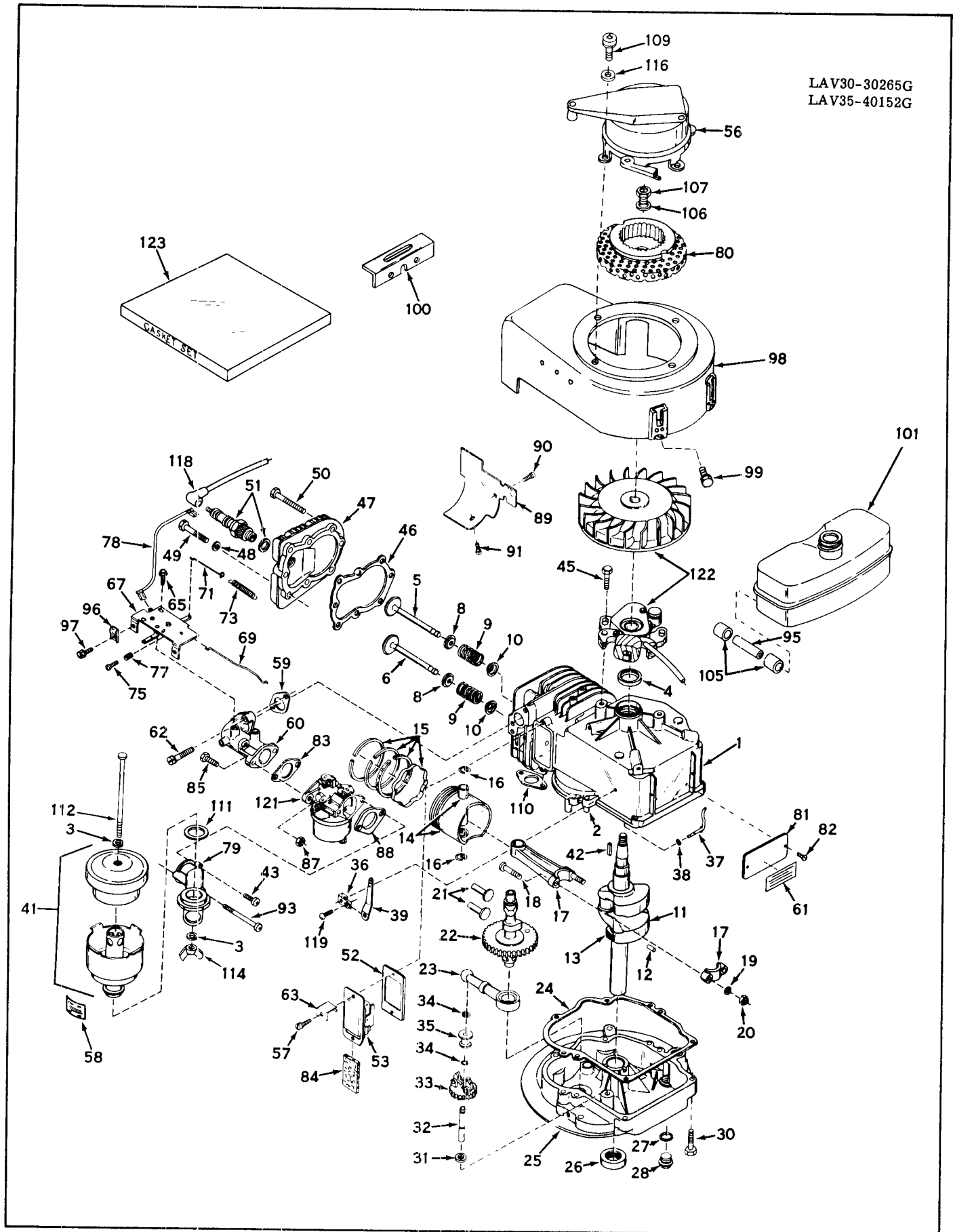


19'' AND 21'' H.P. PARTS LIST

Ref. No.	Part No.	Description	No. Used
1	81064	Bag - Set of 2	1
2	5-3304	Decal - Whirlwind	1
3	5-3460	Assembly, Gas Cap	1
4	32104-88	Screw	2
5	5-3327	Shroud, 19" & 21" H. P. Imp.	1
6	32104-76	Screw, Self Tapping	7
7	5-0640	Plate, Escutcheon	1
8	5-3316	Assembly, Throttle Control	1
9	218-75	Clip	1
10	3-0690	Hanger, Bag	1
11	5-0645	Handle, Upper	1
12	32146-8	Nut	4
13	3-2654	Screw	4
14	5-3307	Bracket, Rear	1
15	3-9430	Handle, Lower	1
16	3-8429	Cap, Reservoir w/Ring Ref. 17	1
17	5-1391	"O" Ring	1
18	5-0625	Reservoir, Oil	1
19	5-2947	Decal, Oil Reservoir	1
20	32104-75	Screw	2
21	3290-261	Washer	2
22	237-65	"O" Ring	1
23	3-2652	Bolt, Wheel	4
24	4-2600	Tire, Rear	2
25	3-2563	Assembly, Wheel & Bshg.	4
26	3-2664	Bushing	4
27	3-2634	Arm, Pivot	1
28	3296-5	Nut	4
29	3-2637	Spring Arm	4
30	5-0656	Knob	2
31	3-6482	Nut, Pivot	2
32	3290-255	Hairpin Cotter	2
33	5-2446	Latch, Handle	2
34	3-3287	Spacer	2

Ref. No.	Part No.	Description	No. Used
35	5-2490	Screw	2
36	5-0655	Plug, Washout	1
37	3-5956	Washer, Pivot	4
38	3-0655	Screw, Pivot	4
39	5-0657	Knob	2
40	5-0660	Tire, Front	2
41	5-1984	Arm, Pivot	1
42	3257-3	Key	1
43	3-5246	Screw, Special	1
44	3253-22	Lockwasher	1
45	3-6292	Cup, Anti-Scalp	1
46	5-1611	19" Impulse Blade	1
	5-1610	21" H. P. Blade	1
47	3-9810	Retainer, Blade	1
48	32140-48	Screw, Self Tapping	3
49	32146-5	Stop Nut	2
50	3290-133	Screw	1
51	5-3326	19" Impulse Housing	1
	5-3325	21" H. P. Housing	1
52	5-1986	Arm, Pivot	1
53	5-3311	Deflector	1
54	5-3442	Attachment, Bag	1
55	2-9319	Assembly, Muffler	1
56	32103-14	Nut, Wing	1
57	3290-199	Nut, Speed	1
58	5-1426	Decal, A. S. A.	1
59	3-2644	Pin, Hinge	1
60	3-7643	Decal	1
61	3-2635	Arm, Pivot	1
62	221-287	Engine, 19" & 21" H. P. Imp.	1
63	5-2517	Hook	1
64	5-2518	Pivot, Throttle	1
65	5-2521	Rod, Throttle	1
66	5-2520	Linkage, Throttle	1
67	5-3335	Decal	1

ENGINE DRAWING (All models)



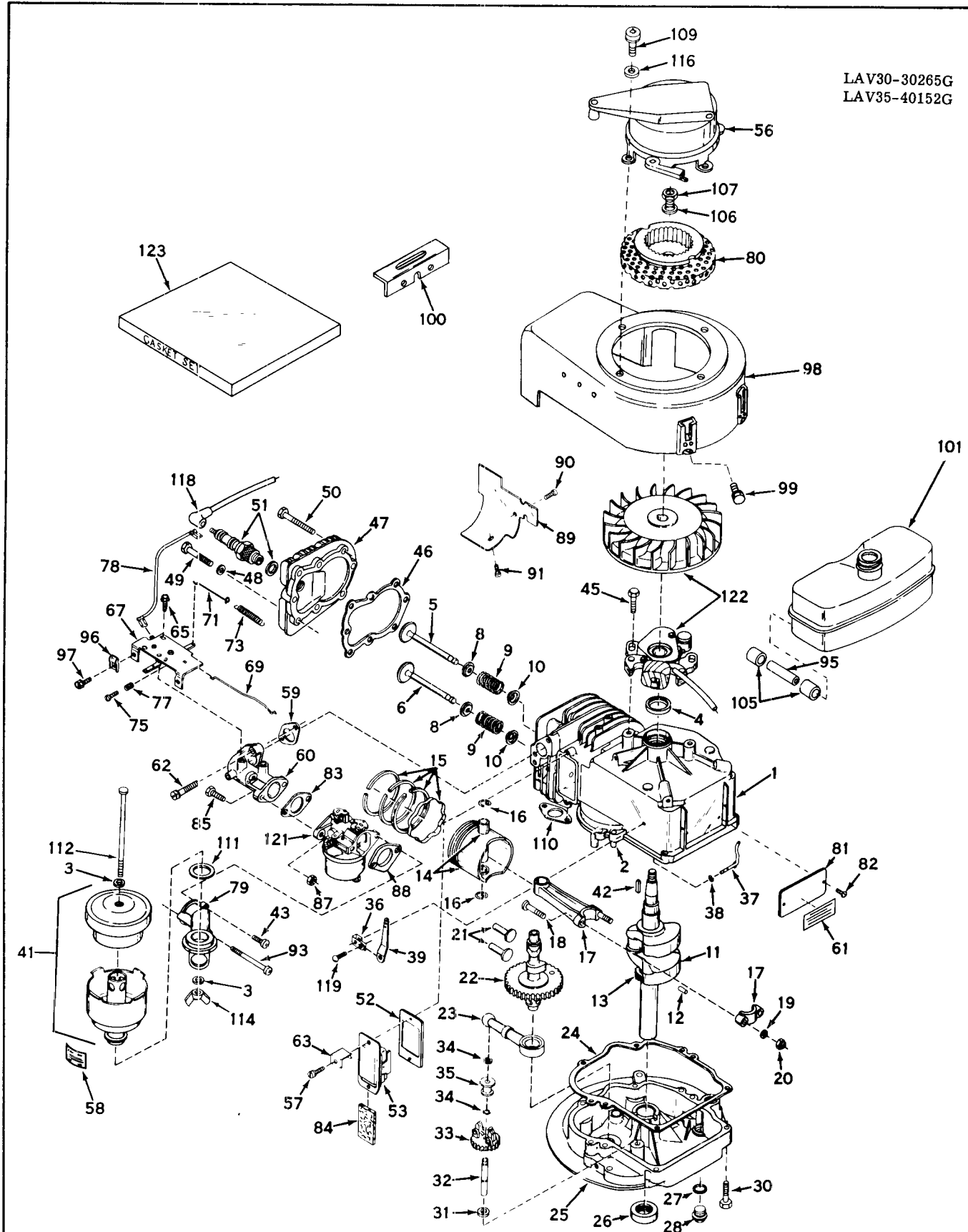
ENGINE PARTS LIST (All Models)

Ref. No.	Part No.	Description	No. Used
1	32617	Cylinder Assy. (Incl. Nos. 2 & 4) (Use with Model LAV30-30265G only)	1
1	31909B	Cylinder Assy. (Incl. Nos. 2 & 4) (Use with Model LAV35-40152G only)	1
2	26727	Pin, Dowel	2
3	27183	Washer, Fibre	2
4	*29183	Seal, Oil	1
5	29314A	Valve, Intake (Standard) (Incl. Nos. 8, 9 & 10)	1
5	29316A	Valve, Intake (1/32" Oversize) (Incl. Nos. 8, 9 & 10)	1
6	29313A	Valve, Exhaust (Standard) (Incl. Nos. 8, 9 & 10)	1
6	29315A	Valve, Exhaust (1/32" Overs.) (Incl. Nos. 8, 9 & 10)	1
8	31671	Cap, Upper Valve Spring	2
9	31672	Spring, Valve	2
10	31673	Cap, Lower Valve Spring	2
11	30961	Crankshaft Assy. (Incl. Nos. 12 & 13) (Use with Model LAV30-30265G only)	1
11	29223	Crankshaft Assy. (Incl. Nos. 12 & 13) (Use with Model LAV35-40152G only)	1
12	29783	Pin, Crankshaft Gear	1
13	27613	Gear, Crankshaft	1
14	31304	Piston & Pin Assy. (Standard) (Incl. 2 of No. 16) (Use with Model LAV30-30265G only)	1
14	31305	Piston & Pin Assy. (.010 Oversize) (Incl. 2 of No. 16) (Use with Model LAV30-30265G only)	1
14	31306	Piston & Pin Assy. (.020 Oversize) (Incl. 2 of No. 16) (Use with Model LAV30-30265G only)	1
14	31307	Piston & Pin Assy. (Standard) (Incl. 2 of No. 16) (Use with Model LAV35-40152G only)	1
14	31308	Piston & Pin Assy. (.010 Oversize) (Incl. 2 of No. 16) (Use with Model LAV35-40152G only)	1
14	31309	Piston & Pin Assy. (.020 Oversize) (Incl. 2 of No. 16) (Use with Model LAV35-40152G only)	1
15	27565	Ring Set, Piston (Standard) (Use with Model LAV30-30265G only)	1
15	27566	Ring Set, Piston (.010 Oversize) (Use with Model LAV30-30265G only)	1
15	27567	Ring Set, Piston (.020 Oversize) (Use with Model LAV30-30265G only)	1

Ref. No.	Part No.	Description	No. Used
15	28986	Ring Set, Piston (Standard) (Use with Model LAV35-40152G only)	1
15	28987	Ring Set, Piston (.010 Oversize) (Use with Model LAV35-40152G only)	1
15	28988	Ring Set, Piston (.020 Oversize) (Use with Model LAV35-40152G only)	1
16	20381	Ring, Piston Pin Retaining	2
17	30963A	Rod Assy., Connecting (Incl. Nos. 18, 19 & 20)	1
18	26706	Bolt, Connecting Rod	2
19	20747	Washer, Connecting Rod	2
20	27573	Nut, Lock	2
21	27241	Lifter, Valve	2
22	31316	Camshaft	1
23	29914	Pump Assy., Oil	1
24	*26750A	Gasket, Mounting Flange	1
25	31907	Flange Assy., Mounting (Incl. Nos. 26, 27, 28 & 32) (LAV35-40152G only)	1
25	30594A	Flange Assy., Mounting (Incl. Nos. 26, 27, 28 & 32) (LAV30-30265G only)	1
26	*26208	Seal, Oil	1
27	*28833	Gasket, Drain Plug	1
28	27244	Plug, Oil Drain	1
30	650488	Screw, Hex Hd. Cap. Sems	6
31	30590A	Washer, Flat	1
32	30574	Shaft, Mechanical Governor	1
33	30591	Gear Assy., Governor	1
34	29193	Ring, Retaining	2
35	30588A	Spool, Governor	1
36	31335	Clamp, Governor Lever	1
37	30589	Rod, Governor (Incl. No. 38)	1
38	28277	Washer, Flat	1
39	31383	Lever, Governor	1
41	31404	Cleaner Assy., Air	1
42	27247	Key, Flywheel	1
43	28597	Screw, Fil. Hd. Sems	1
45	650489	Screw, Hex Hd. Cap Sems	2
46	*29953B	Gasket, Cylinder Head	1
47	30579	Head, Cylinder	1
48	26073	Washer, 5/16"	5
49	6021	Screw, Hex Hd. Cap	5
50	6023	Screw, Hex Hd. Cap	3
51	21943	Plug, Spark (Champion J-8 or equivalent)	1
52	*31619	Gasket, Breather	1
53	31337	Breather Assy. (Incl. Nos. 52 & 84)	1
56	590378	Starter, Impulse	1
57	650128	Screw, Phil. Fil. Hd. Sems	2
58	30002	Decal, Air Cleaner	1
59	*30188	Gasket, Intake Pipe	1
60	31384	Pipe, Intake	1
61	31865	Decal, Name & Instruction	1
62	650176	Screw, Phil. Fil. Hd. Sems	2
63	30593	Clip, Magneto Wire	1
65	30200	Screw, Hex Slit. Hd. Sems S. T. 2	2

(Continued next page)

ENGINE (Continued)



ENGINE PARTS LIST (Continued)

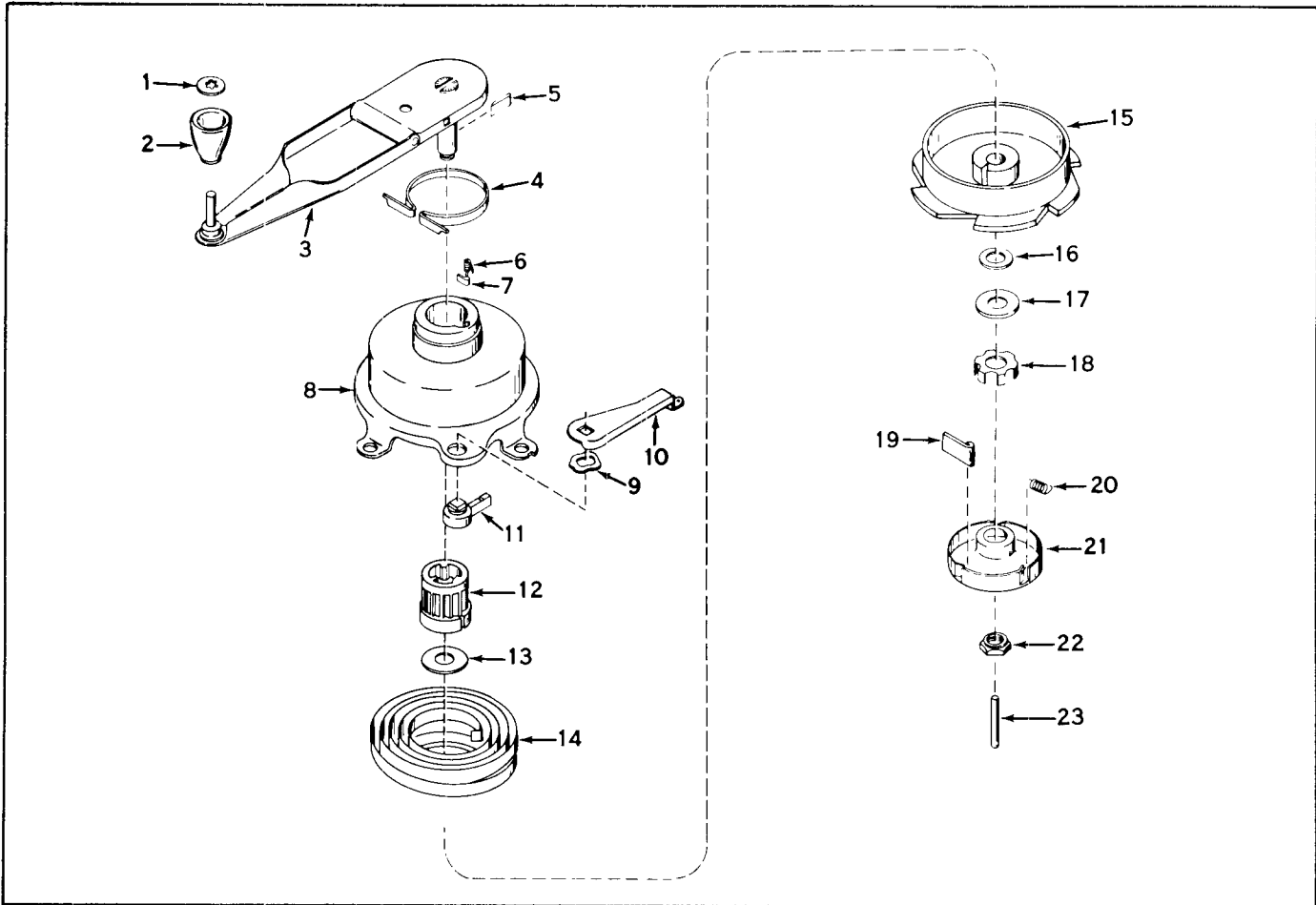
Ref. No.	Part No.	Description	No. Used
67	31736	Control Assy., Speed	1
69	31385A	Link, Throttle to Governor	1
71	31387A	Link, Governor Spring	1
73	31386	Spring, Governor	1
75	650549	Screw, Fil. Sltd. Hd. Mach	1
77	31342	Spring, Compression	1
78	31388	Wire, Ground	1
79	31473	Elbow, Air Cleaner	1
80	31284	Hub & Screen	1
81	31345	Plate, Identification	1
82	28670	Screw, Drive	2
83	*26756	Gasket, Carburetor	1
84	31410	Element, Breather	1
85	6201	Screw, Hex Hd. Cap	2
87	29752	Nut, Hex Jam	2
88	*27272	Gasket, Cleaner Bracket	1
89	29516	Extension, Housing (Use with Model LAV35-40152G only)	1
90	30688	Screw, Hex Hd. Cap Sems (Use with Model LAV35-40152G only)	1
91	650128	Screw, Fil. Hd. Sems (Use with Model LAV35-40152G only)	1
93	650519	Screw, Fil. Hd. Mach.	1
95	31400	Line, Fuel	1

Ref. No.	Part No.	Description	No. Used
96	27793	Clip, Conduit	1
97	28942	Screw, Sltd. Hex. Hd. Sems	1
98	32171	Housing, Blower	1
99	650561	Screw, Hex Hd. Cap Sems	2
100	**	Bracket, Shroud	1
101	32170	Tank, Fuel (Incl. No. 102)	1
102	**	Cap, Fuel Filler	1
105	29774	Line, Fuel	2
106	650490	Washer, Belleville	1
107	650491	Nut, Flywheel	1
109	30513	Screw, Fil. Hd. Sems	4
110	*30081	Gasket, Muffler	1
111	*27165	Gasket, Air Cleaner-to-Elbow	1
112	650622	Bolt, Air Cleaner	1
114	9577	Nut, Wing	1
116	650168	Flatwasher	4
118	610118	Cover, Spark Plug	1
119	650548	Screw, Hex Sltd. Washer, Hd.	1
121	631242	Carburetor (Use with Model LAV30-30265G only)	1
121	631003A	Carburetor (Use with Model LAV35-40152G only)	1
122	610693A	Magneto, Tecumseh	1
123	31409A	Gasket Set (Incl. items marked *)	1

* Not Illustrated

** Order from your Toro Dealer

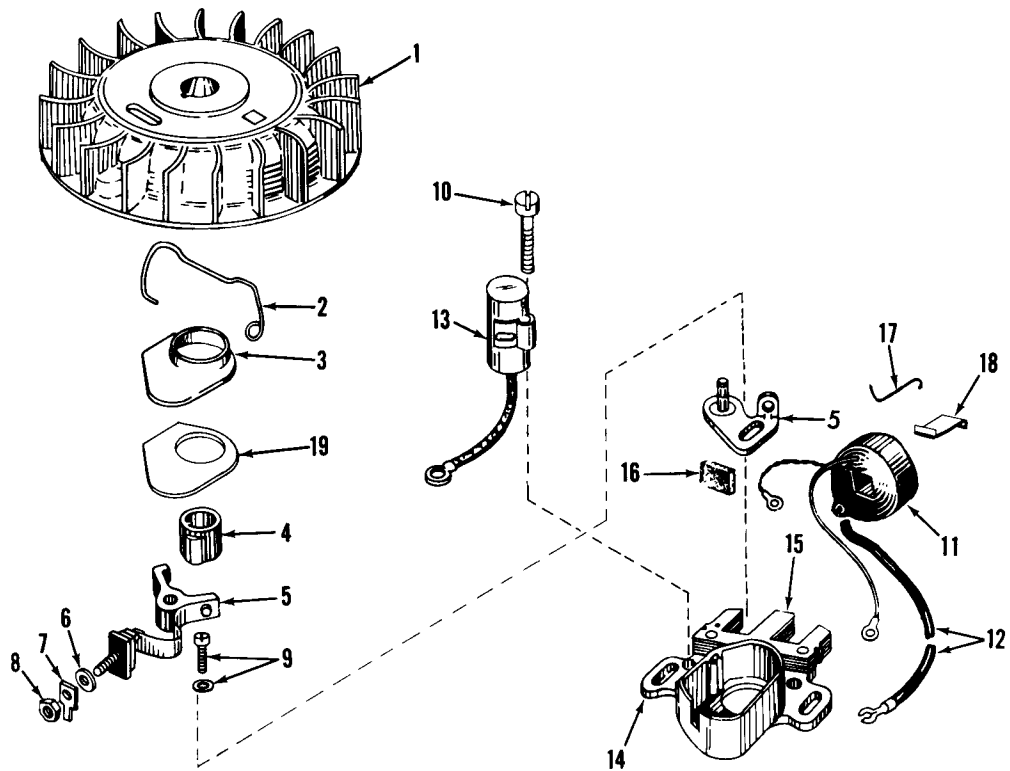
IMPULSE STARTER NO. 590378



Ref. No.	Part No.	Description	No. Used
1	29227	Fastener, Handle	1
2	29228	Knob, Starter Handle	1
3	31458	Handle Assy., Starter Incl. Nos. 4 & 5)	1
4	29935	Band, Brake	1
5	29936	Dog, Wind	1
6	30987	Spring, Lock Dog	1
7	29937	Dog, Lock	1
8	31421	Housing & Release Assy., Offset (Incl. Nos. 9, 10 & 11)	1
9	31412	Washer, Wave	1
10	31422	Release Lever, Offset	1

Ref. No.	Part No.	Description	No. Used
11	31419	Release Assy.	1
12	31455	Bearing, Center	1
13	31456	Washer, Spacer	1
14	31413	Spring, Power	1
15	31457	Hub, Spring	1
16	31418	Washer, Shim (Use as req'd)	1
17	29734	Washer, Thrust	1
18	29717	Brake	1
19	590148	Dog, Starter	3
20	29940	Spring, Retainer	1
21	29942	Retainer	1
22	31417	Nut, Shoulder	1
23	29736	Pin, Centering	1

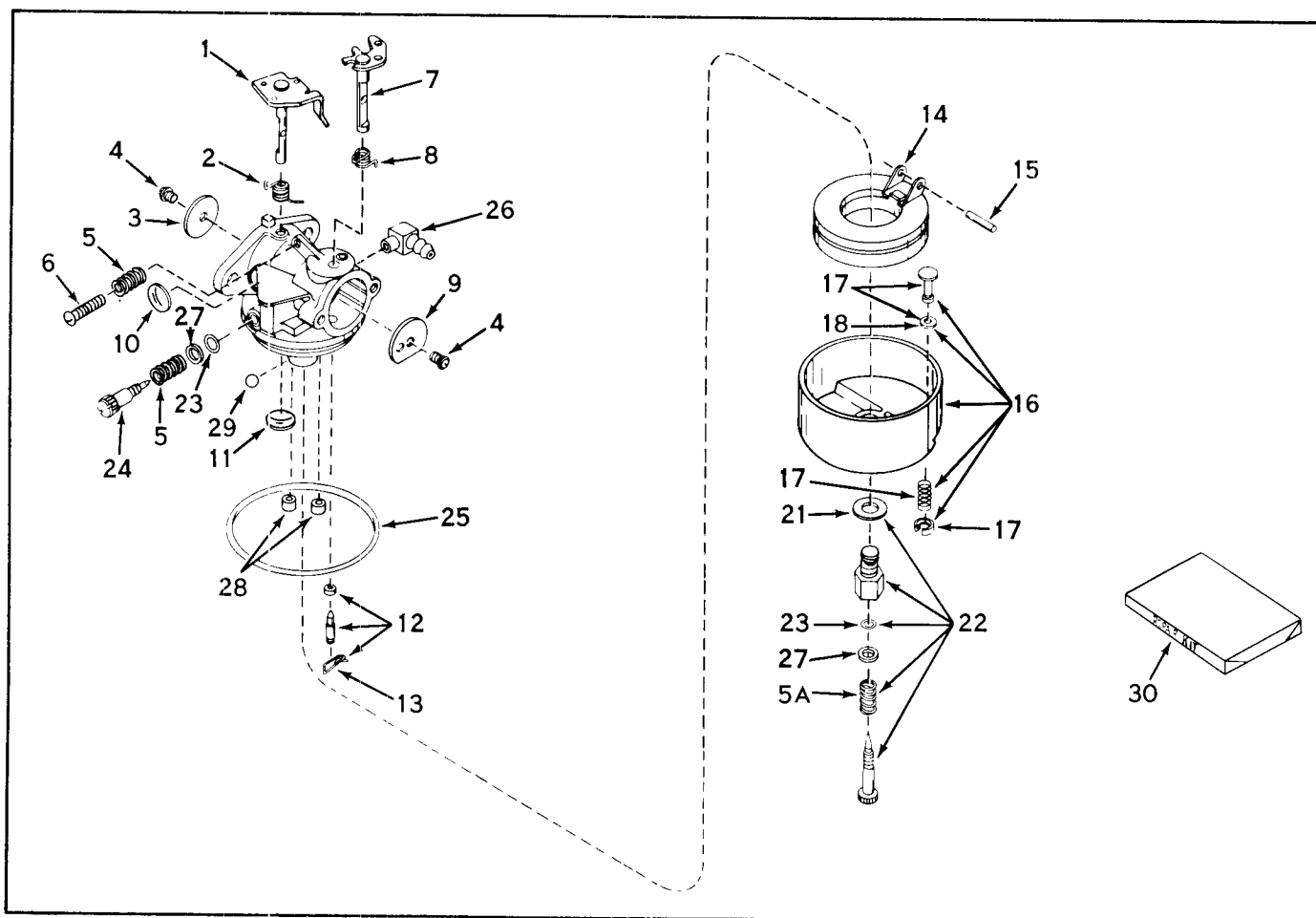
MAGNETO NO. 610693A



Ref. No.	Part No.	Description	No. Used
1	31331	Flywheel	1
2	30551	Spring, Breaker Box	1
3	30550	Cover, Breaker Box Dust	1
4	30552	Cam, Breaker	1
5	30547A	Contact Assy., Breaker	1
6	610385	Washer, Terminal	1
7	30843	Tab, Ground Terminal	1
8	610408	Nut, Terminal	1
9	29181	Screw & Washer, Breaker	1
10	610593	Screw, Condenser Fastening	1
11	30560	Coil Assy., (Incl. Ref. Nos. 12, 13 & 18)	1

Ref. No.	Part No.	Description	No. Used
12	30554	Wire, Lead	1
13	30548A	Condenser	1
14	30545	Core & Plate	1
15	30561A	Stator Assy. (Incl. Nos. 2, 3, 5 thru 14 & 16 thru 19)	1
16	30549	Felt, Cam Wiper	1
17	31311	Clip, Coil Locking	1
18	29629	Spring, Coil Wedge	1
19	32052	Gasket, Dust Cover	1

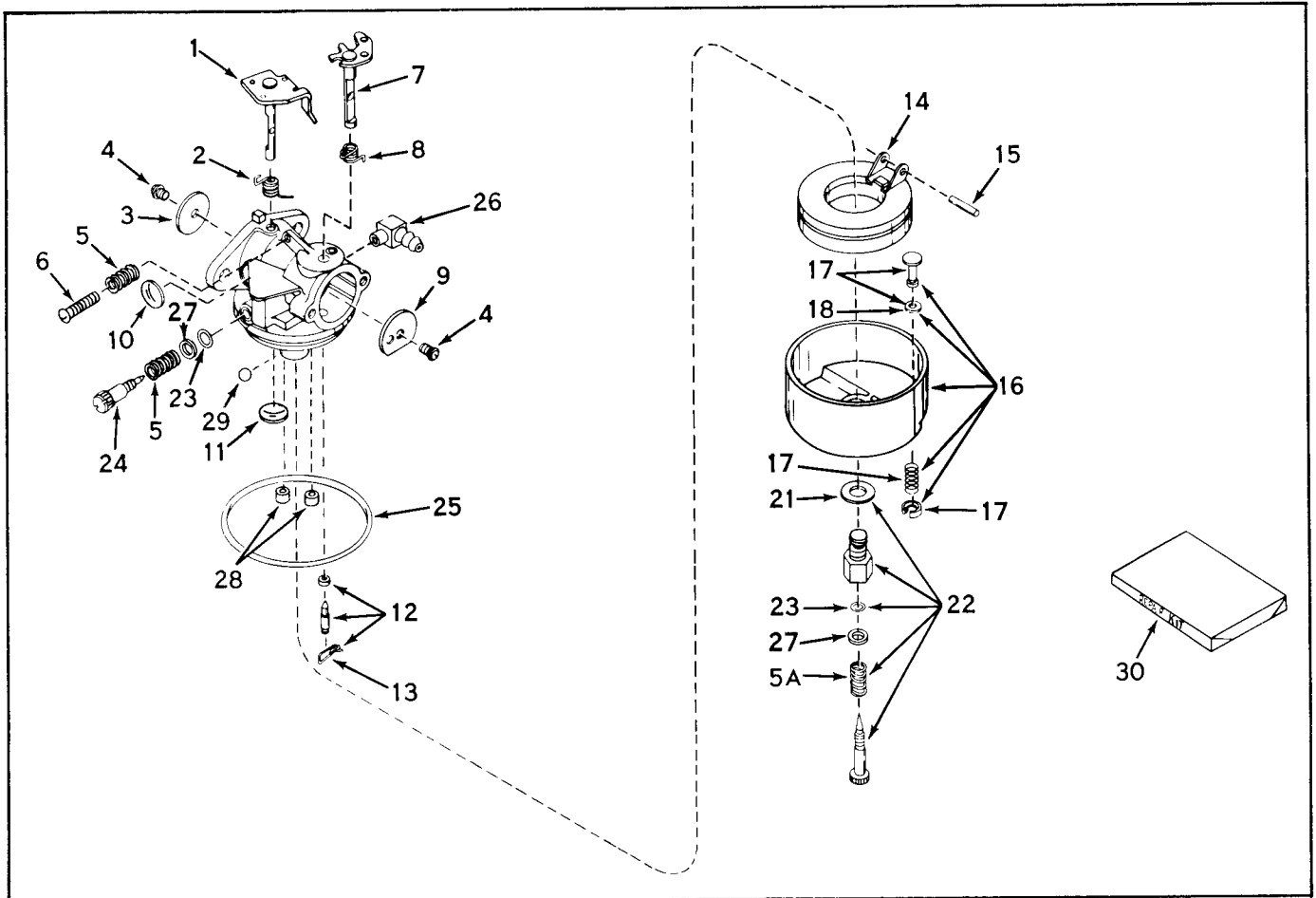
CARBURETOR NO. 631003A (19" & 21" H.P. ONLY)



Ref. No.	Part No.	Description	No. Used
1	630983	Shaft & Lever Assy., Throttle	1
2	631066	Spring, Throttle Return	1
3	631036	Shutter, Throttle	1
4	650506	Screw	2
5	630766	Spring, Idle Regulating Screw	2
5A	630738	Spring, Main Adj. Screw	1
6	650417	Screw, Idle regulating	1
7	630973	Shaft & Lever Assy., Choke	1
8	630821	Spring, Choke Return	1
9	631037	Shutter, Choke	1
10	630748	Plug, Welch	1
11	631027	Plug, Welch	1
12	*631021	Inlet Needle, Seat & Clip Assy. (Incl. No. 13)	1
13	631022	Clip, Inlet Needle	1
14	631023	Float, Carburetor	1
15	*631024	Shaft, Float	1

Ref. No.	Part No.	Description	No. Used
16	631025	Bowl & Drain Assy., Float (Incl. Nos. 17)	1
17	27136	Plunger Assy., Drain (Incl. No. 18)	1
18	27554	Gasket, Drain Plunger	1
21	27110	Gasket, Bowl-to-Body	1
22	*631026	Adjustment Screw Assy., Main (Incl. Nos. 5A, 21, 23 & 27)	1
23	*630740	"O" Ring, Adjustment Screw	2
24	*631078	Screw, Idle Adjustment	1
25	*631028	"O" Ring, Bowl-to-Body	1
26	631038	Fitting, Fuel Inlet	1
27	630739	Washer	2
28	630747	Plug, Cup	2
29	631081	Ball, Aluminum	1
30	631029	Repair Kit (Incl. items marked *)	1

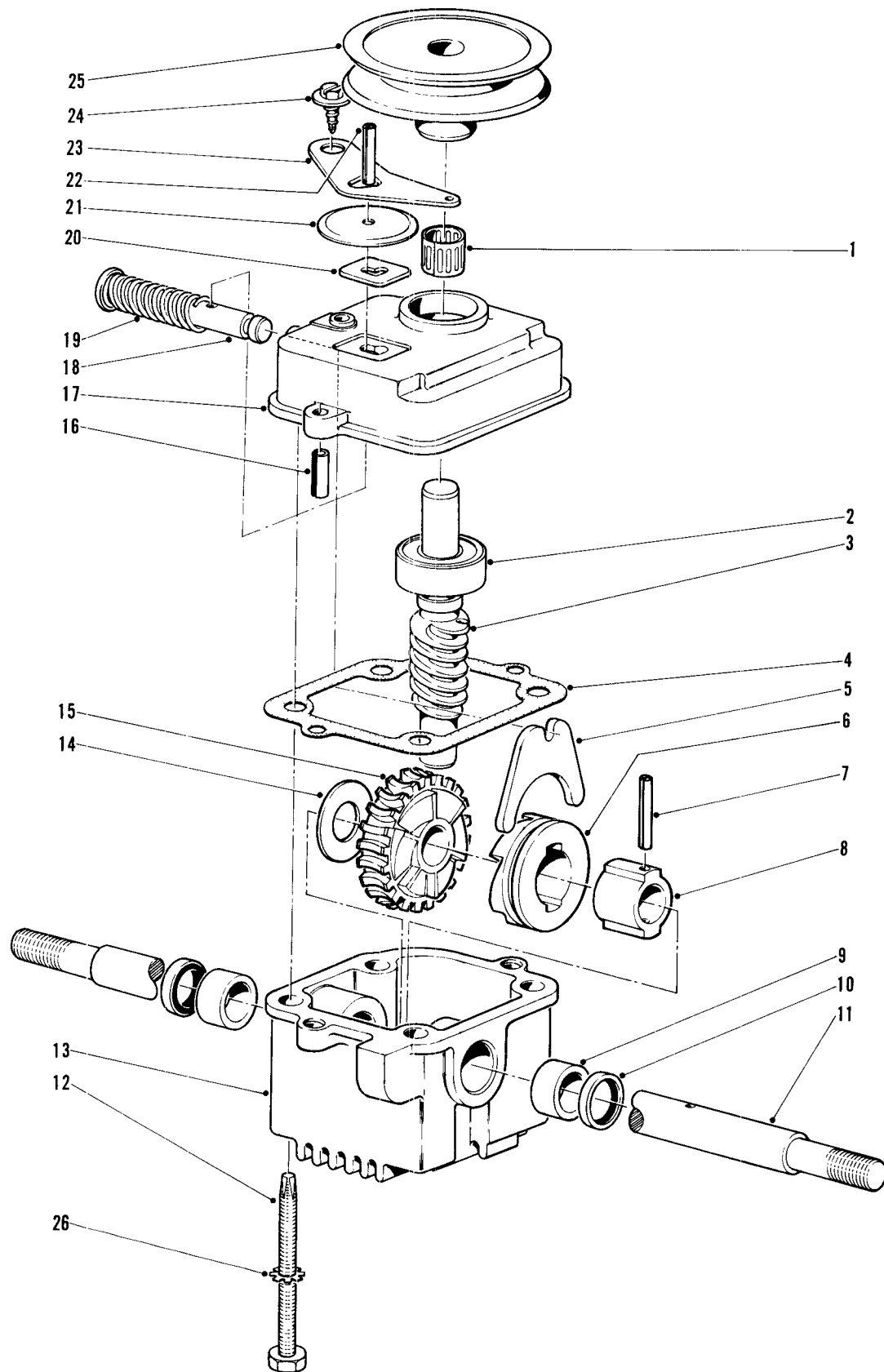
CARBURETOR NO. 631242 (21" S.P. ONLY)



Ref. No.	Part No.	Description	No. Used
1	630983	Shaft & Lever Assy., Throttle	1
2	631279	Spring, Throttle Return	1
3	631036	Shutter, Throttle	1
4	650506	Screw	2
5	630766	Spring, Idle Regulating Screw	2
5A	630738	Spring, Main Adj. Screw	1
6	650417	Screw, Idle Regulating	1
7	630973	Shaft & Lever Assy., Choke	1
8	630821	Spring, Choke Return	1
9	631037	Shutter, Choke	1
10	630748	Plug, Welch	1
11	631027	Plug, Welch	1
12	*631021	Inlet Needle, Seat & Clip Assy. (Incl. No. 13)	1
13	631022	Clip, Inlet Needle	1
14	631023	Float, Carburetor	1
15	*631024	Shaft, Float	1

Ref. No.	Part No.	Description	No. Used
16	631025	Bowl & Drain Assy., Float (Incl. Nos. 17)	1
17	27136	Plunger Assy., Drain (Incl. No. 18)	1
18	27554	Gasket, Drain Plunger	1
21	27110	Gasket, Bowl-to-Body	1
22	*631026	Adjustment Screw Assy., Main (Incl. Nos. 5A, 21, 23 & 27)	1
23	*630740	"O" Ring, Adjustment Screw	2
24	*631239	Screw, Idle Adjustment	1
25	*631028	"O" Ring, Bowl-to-Body	1
26	631038	Fitting, Fuel Inlet	1
27	630739	Washer	2
28	630747	Plug, Cup	2
29	631081	Ball, Aluminum	1
30	631240	Repair Kit (Incl. items marked *)	1

GEAR CASE ASSEMBLY (21'' POW-R-DRIVE)



GEAR CASE ASSEMBLY PARTS LIST

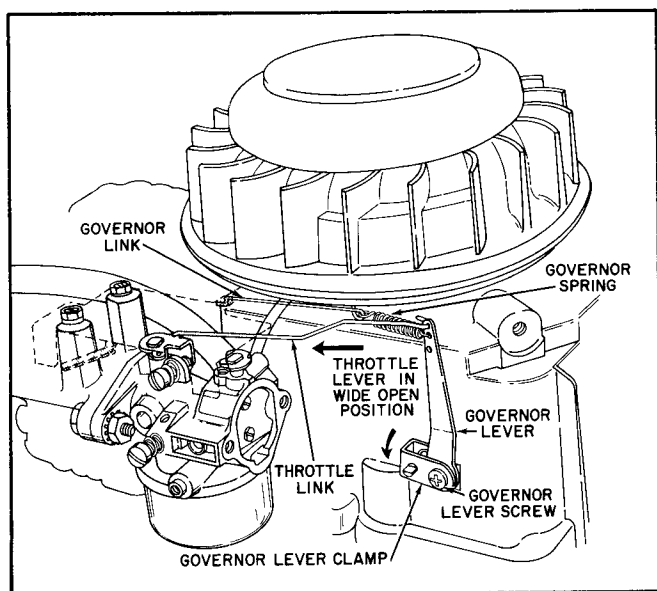
Ref. No.	Part No.	Description	No. Used
1	3290-286	Ring, Tolerance	1
2	251-144	Bearing, Ball	1
3	5-1616	Shaft, Worm	1
4	3-0734	Gasket, Gear Case	1
5	5-3247	Fork, Shifter	1
6	3-0722	Jaw, Clutch	1
7	32121-40	Roll Pin	1
8	3-0721	Sleeve	1
9	256-110	Bushing	2
10	253-86	Seal, Oil	2
11	3-0720	Shaft, Drive	1
12	32140-63	Screw, Sems	4
13	3-1079	Case, Gear	1

Ref. No.	Part No.	Description	No. Used
14	3-0724	Washer, Thrust	1
15	3-0723	Gear, Worm	1
16	32121-1	Roll Pin	2
17	5-3283	Cover, Gear Case	1
18	5-3248	Rod, Shifter	1
19	3-0731	Spring	1
20	3-0681	Plate, Latch	1
21	3-2615	Dust Cover, Transmission	1
22	32121-23	Roll Pin	1
23	5-3252	Arm, Shifter	1
24	32140-64	Screw, Self Tapping	1
25	5-1615	Pulley	1
26	3255-7	S. P. Washer	4

IMPORTANT ORDERING INSTRUCTIONS

Repair parts are available from your TORO distributor. To insure getting correct parts without delay, please furnish the following information:

1. Serial number of your product as shown on the name plate.
2. Part number, description and quantity of each part required.
3. Name and address where parts are to be shipped.
4. Do NOT order by reference number, use part number only.



MECHANICAL GOVERNOR ADJUSTMENTS

1. Loosen governor lever screw.
2. Hold throttle lever in wide open position.
3. Rotate governor lever clamp as far as possible in direction shown by arrow.
4. Tighten governor lever screw.

PRODUCT CHANGES

In an effort to make improvements available to Toro owners as quickly as possible, minor changes are incorporated into Toro's products from time to time that do not become immediately shown in the Reference Drawing and Parts List. If such a change apparently has been made in your unit, which is not reflected in your manual, see your Toro distributor or his authorized Toro service dealer for information and parts numbers.