

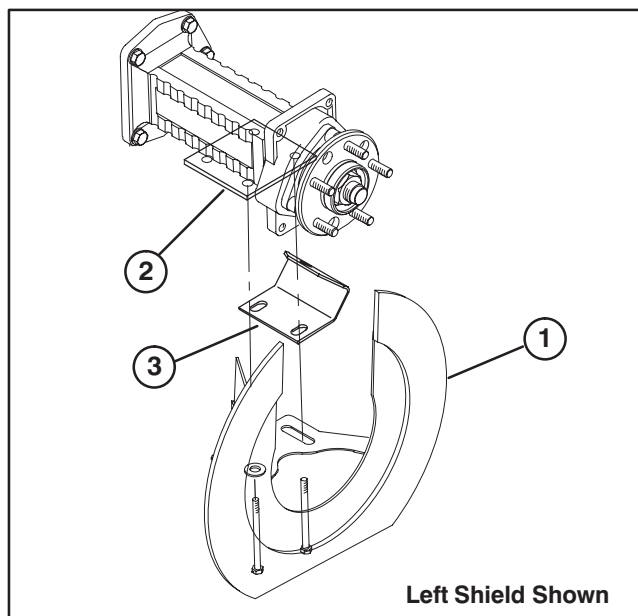


PART NO. 93-4555

# INSTALLATION INSTRUCTIONS

## 84" REAR DISCHARGE KIT For 84" Guardian Recycler, Model 30384

1. Remove (2) capscrews and (4) washers securing outer edge of L.H. axle mounting plate (Fig. 1).



**Figure 1**

1. Left Brake shield
2. Axle mounting plate
3. Plunger switch bracket

**Note:** On some models, a plunger switch bracket may also be secured with (1) of the capscrews so only (2) washers are used.

2. Mount L.H. brake shield to mounting plate with (2) capscrews and (2) washers (Fig. 1). A washer is to be positioned between brake shield and mounting plate on each capscrew.

**Note:** When machine is equipped with a plunger switch bracket, eliminate rear washer when mounting brake shield.

3. Repeat procedure on right end of axle.

4. Raise cutting unit to highest position, shut the engine off and engage the parking brake.

5. Remove deck covers.

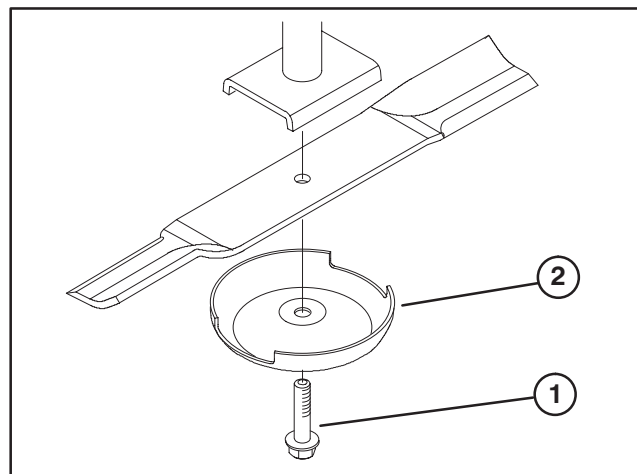
6. Disconnect height-of-cut straps/chains from rear of deck.

7. Rotate front of deck upward and insert latch rod into front hole (service position) in latch plate.

8. Grasp end of blade using a rag or thickly padded glove. Remove blade bolt, anti-scalp cup and blade from spindle shaft (Fig. 2). Repeat procedure on remaining blades.

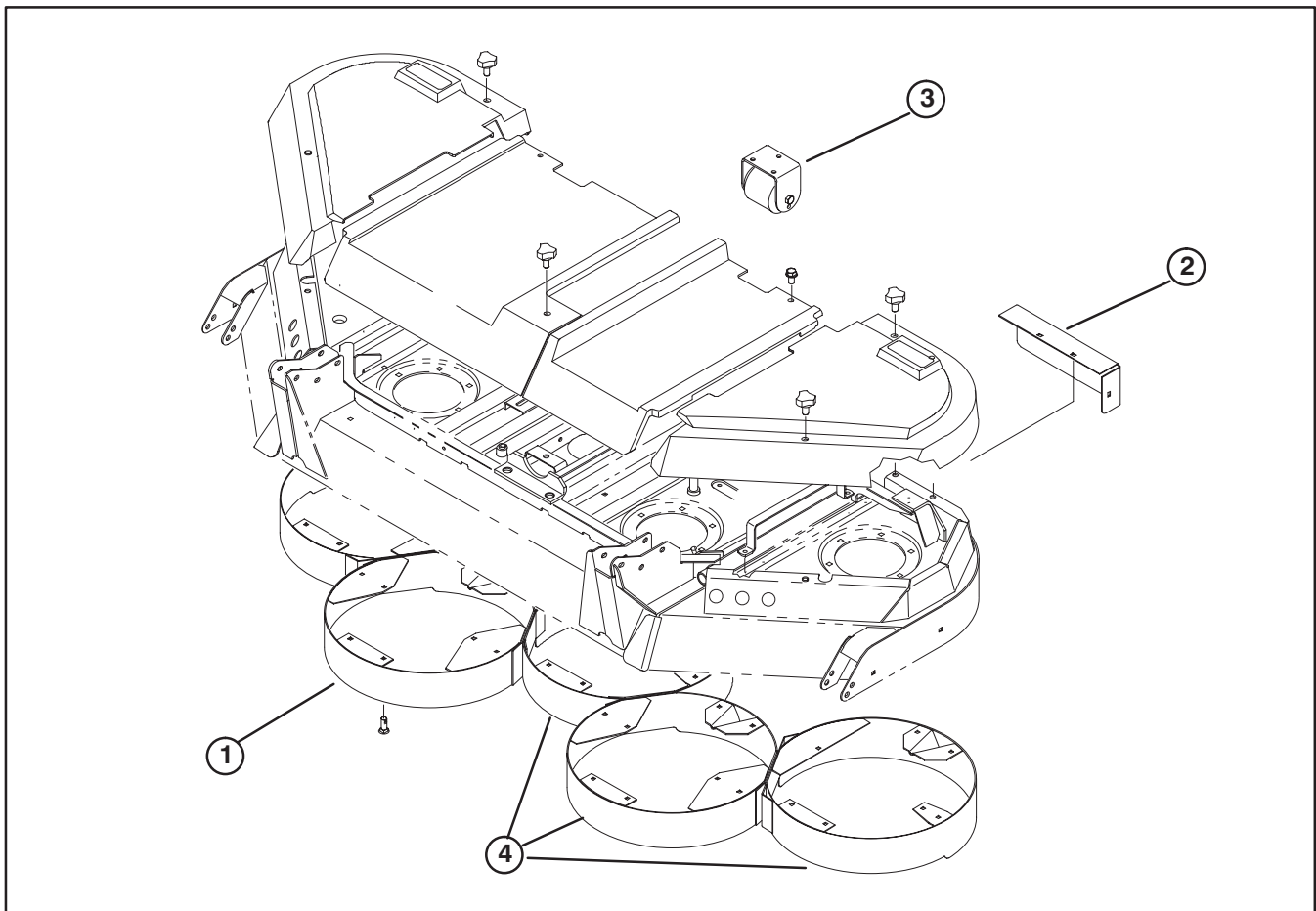
9. Remove carriage bolts and flange head locknuts securing cutting chambers to underside of deck (Fig. 3). Remove chambers.

10. Install new deck chambers and secure with carriage bolts and locknuts (Fig. 4).



**Figure 2**

1. Blade bolt
2. Anti-Scalp Cup



**Figure 3**

- 1. Cutting chambers
- 2. Rear cover
- 3. Rear roller
- 4. Left Chambers

**11.** Remove carriage bolts and locknuts securing covers to rear corners of deck (Fig. 3). Remove covers.

**12.** Install new rear covers and secure with carriage bolts and locknuts (Fig. 4).

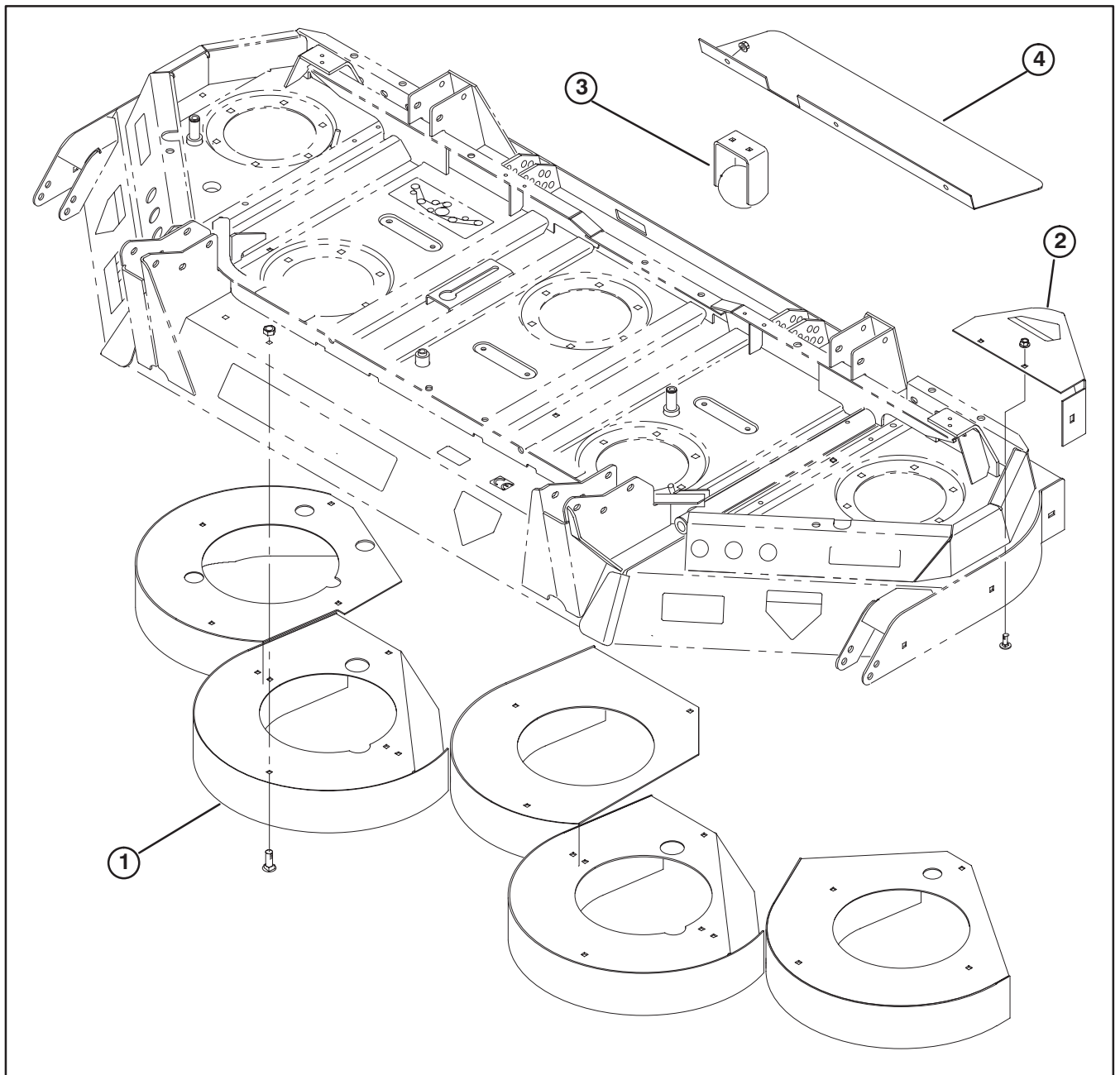
**13.** Remove capscrews and locknuts securing (2) rear roller brackets to rear of deck (Fig. 3). Remove roller assemblies.

**14.** Using (2) center holes in rear, center of deck, install new rear roller assembly and secure with (2) capscrews and locknuts (Fig. 4).

**15.** Mount rear deflector to back of deck with (3) carriage bolts and locknuts (Fig. 4).

**16.** Install new blade—sail facing (up) toward cutting unit—with anti-scalp cup and blade bolt. Tighten blade bolt to 85–110 ft-lb. Repeat procedure on remaining blades.

**Note:** Under certain turf conditions it may be desirable to limit the amount of clippings discharged from the rear of the deck. This can be accomplished by using recycler chambers in two or three of the left most chamber positions (Fig. 4).



**Figure 4**

- 1. Cutting chambers
- 2. Rear cover
- 3. Rear roller
- 4. Rear deflector

