



Wheel Horse[®]

Clevis Hitch (For Classic Garden Tractor)

Model No. 85518

Parts Catalog

Ordering Replacement Parts

To order replacement parts, please supply: the part number, the quantity, and the description of each part desired.

Understanding Reference Numbers

Each identified part in an illustration has a reference number. The reference number for a part also appears in the parts list, along with other information about the part.

This catalog uses two special reference number formats, one to indicate parts in a service assembly and another to indicate the quantity of a given part in an illustration.

Service Assembly Reference Numbers

Parts in service assemblies have reference numbers in the form **a:b**. The **a** represents the reference number of the entire service assembly and the **b** represents a sequential number unique to each part within the service assembly.

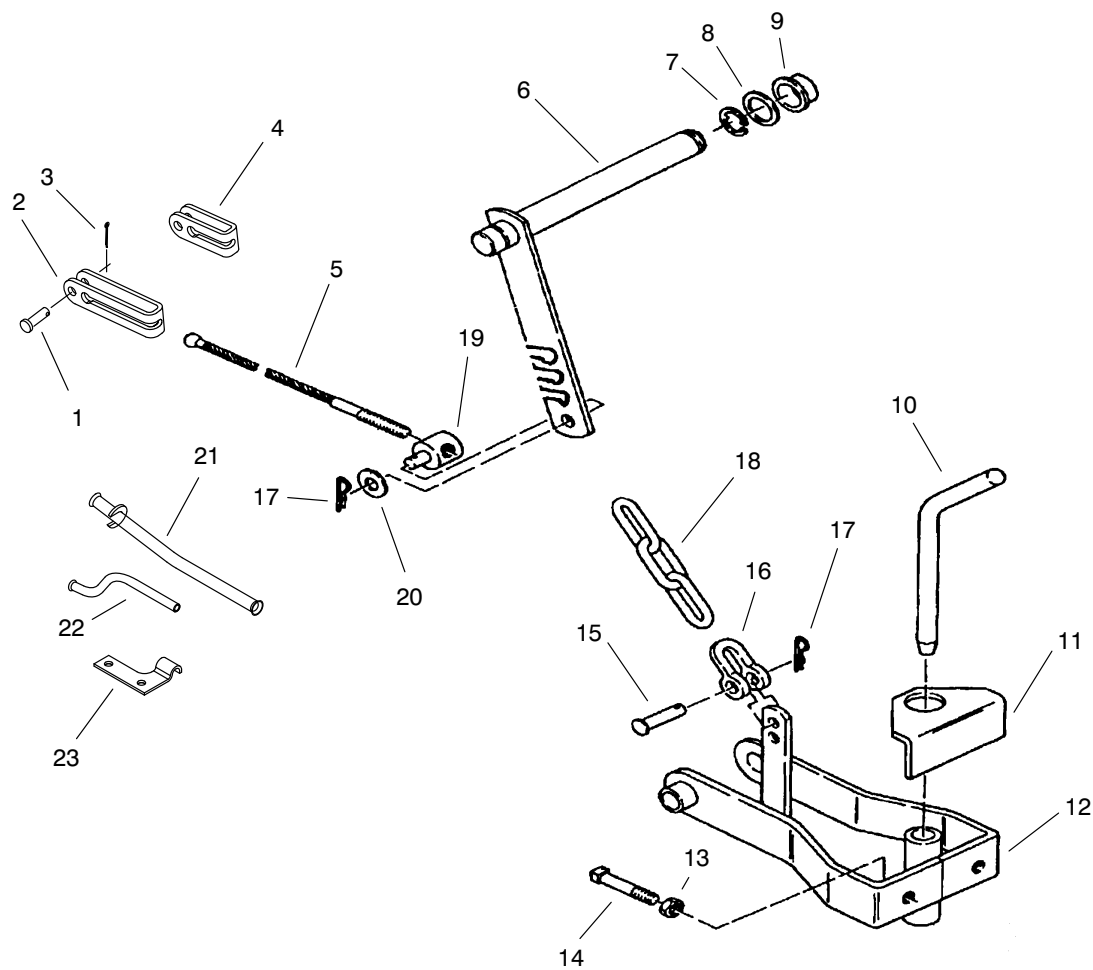
For example, a wheel assembly might be identified by reference number **6**, the tire by **6:1**, the valve by **6:2**, and the wheel by **6:3**. When you order the assembly identified by reference number **6**, you receive all parts identified by reference numbers **6:1**, **6:2**, and **6:3**. However, you may also order any part individually.

Reference numbers of this type appear in illustrations and in part lists.

Reference Numbers Indicating Quantity

In an illustration, if a reference number indicates more than one part, the reference number has the form **nX y**. The **n** represents the quantity of the part, the **X** is the multiplication symbol, and the **y** represents the reference number.

For example, in an illustration, the reference number **2X 37** means that two of the parts identified by reference number **37** are indicated.



Sheet No.:

Clevis Hitch Assembly

Ref. No.	Part No.	Qty.	Description
1	9321204	1	Pin—Clevis
2	108143	1	Clevis—Long
3	9320004	1	Pin—Cotter
4	108145	1	Clevis—Short
5	108144	1	Cable
6	110044	1	Lever Asm
7	5618	2	E—Ring
8	5210	2	Washer—Shim
9	108519	2	Bushing—Bronze
10	106942	1	Pin—Hitch
11	8089	1	Plate—Adj. Hitch
12	108506	1	Hitch Asm
13	3218—5	2	Nut—Jam
14	9095744	2	Screw—Sq. Hd.
15	105821	1	Pin—Clevis
16	105820	1	Clevis
17	9335044	2	Cotter—Hairpin
18	110046	1	Chain—Lift
19	104524	1	Trunnion—Clutch Rod
20	3256—24	1	Washer—Flat
21	105845	1	Tube Asm Complete
22	108315	1	Tube—Conduit
23	108903	1	Clamp—Conduit

Ref. No.	Part No.	Qty.	Description