



Pivot Bracket Kit for OFZ

Part No. 100-2449

INSTALLATION INSTRUCTIONS

Loose Parts

Note: Use the chart below to identify parts for assembly.

DESCRIPTION	QTY.	USE
Pivot Bracket	1	Install Pivot Brackets

Removing the Mower

1. Disengage the power take off (PTO), set the parking brake, and turn the ignition key to "OFF" to stop the engine. Remove the key.
2. Remove hairpin cotters and clevis pins from mower hanger brackets and separate mower from carrier frame (Fig. 1).
4. Place a block, approximately 4 inches high, under the carrier frame. This will raise the frame vertically.
5. Check to see if tension has been removed from the spring assemblies. If tension remains add blocks to raise carrier frame higher.
6. Remove 3/8" x 7/8" (23 mm) shoulder bolts and 3/8" locknuts securing spring end plate assemblies to carrier frame (Fig. 2).

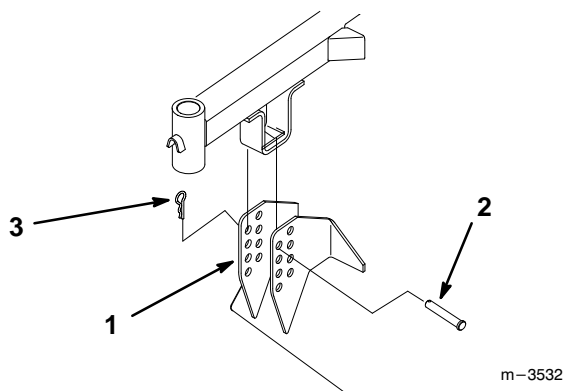


Figure 1

1. Mower Hanger Bracket
2. Clevis Pin
3. Hairpin Cotter

3. Fold carrier frame into its upright position.

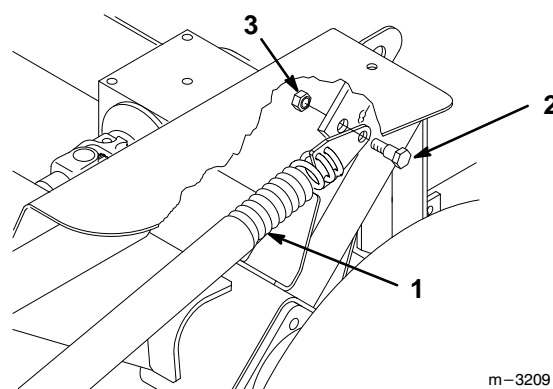


Figure 2

1. Spring Assembly
2. Shoulder Bolt 3/8" x 7/8" (22 mm)
3. Locknut 3/8"

7. Remove the block under the carrier frame.
8. Unfold carrier frame.
9. Remove hairpin cotters and pivot pin assemblies securing push arms to traction unit pivot brackets (Fig. 3).

Note: Save all hardware for use when installing mower. Items 3 and 4 are part of traction unit.

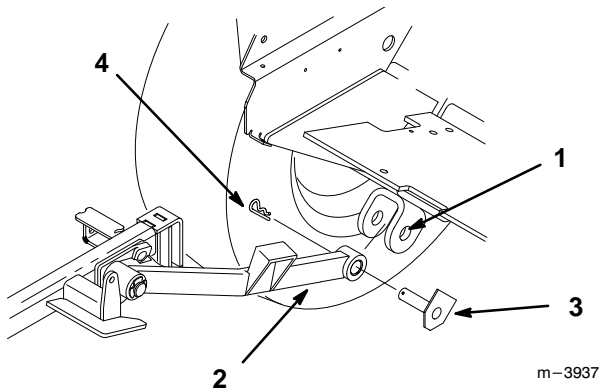


Figure 3

- | | |
|------------------|----------------------------|
| 1. Pivot Bracket | 3. Pivot Pin Assembly-flat |
| 2. Push Arm | 4. Hairpin Cotter |

10. Remove 5/16-18 x 7/8" (11 mm) shoulder bolt and 5/16" flange nut holding PTO cover down (Fig. 4).

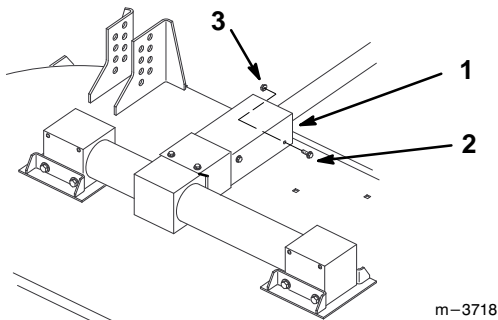


Figure 4

- | | |
|---|---------------------|
| 1. PTO cover | 3. Flange nut 5/16" |
| 2. Shoulder bolt 5/16-18 x 7/8" (11 mm) | |

11. Drive roll pin through hole in universal joint to remove PTO drive shaft from gearbox shaft (Fig. 5).

Note: Drive shaft remains with traction unit.

12. Move deck and carrier frame away from traction unit.

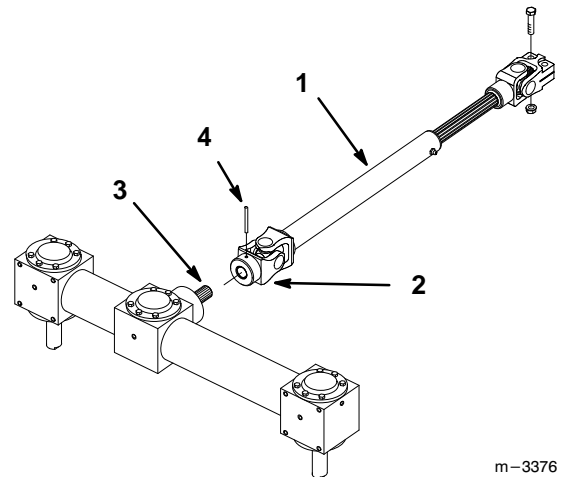


Figure 5

- | | |
|--------------------|------------------|
| 1. PTO Driveshaft | 3. Gearbox shaft |
| 2. Universal Joint | 4. Roll Pin |

Remove Existing Pivot Brackets

1. Jack up machine until the drive wheels are off the floor. Use jack stands or block the machine to prevent it from falling accidentally.
2. Remove the drive wheels.

IMPORTANT: Remove all grass and debris from wheel motor mounts and area around them.

3. Remove the existing pivot brackets on the machine. Remove any welding that exists.
4. Remove paint from areas that will be welded, including new pivot brackets.

Installing New Pivot Brackets

The pivot brackets need to be installed with a jig, part number 100-2444. The jig is available through the Toro Parts Department.

Note: Apply anti-splatter to jig pins to prevent weld splatter from sticking to jig pins (Fig 7). Obtain this locally.

1. Install one of the new pivot brackets onto jig (Fig 6).

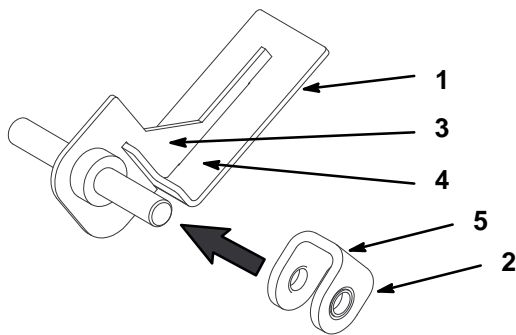


Figure 6

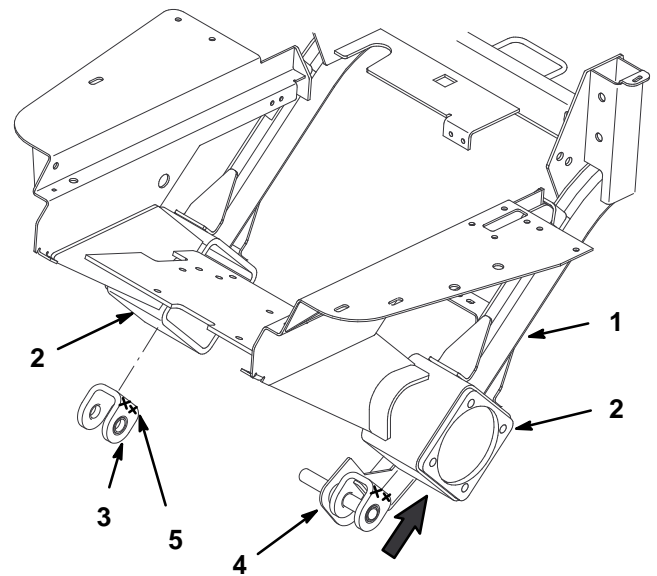
- | | |
|--|--|
| 1. Jig | 4. Base Plate (Flush to bottom of motor mount) |
| 2. Pivot Bracket | 5. Bracket surface (Flush to front of motor mount) |
| 3. Vertical Plate (Flush to side of motor mount) | |

2. Position the jig and bracket against the wheel motor mount. (Fig 7).

Note: Position the jig on the inside of the wheel motor mounts. When positioned correctly it will be flush to motor mount (Fig. 6 and 7).

3. Clamp jig and pivot bracket in place (Fig 7).
4. Weld pivot bracket to wheel motor mount. Lightly tack bracket, opposite jig, to motor mount. Remove jig and weld along entire length of both sides (Fig 7).
5. Repeat for pivot bracket on opposite wheel motor mount.
6. Reinstall the large front tires. Remove jack stands.

7. Reinstall mower deck.



M-4514

Figure 7

- | | |
|-----------------------------|------------------------------------|
| 1. OFZ Frame | 4. Jig and Left-hand Pivot Bracket |
| 2. Wheel Motor Mount | 5. Weld Here X |
| 3. Right-hand Pivot Bracket | |

