



Count on it.

Parts Catalog

Power Rake

TXL 2000 Tool Carrier

Model No. 22536—Serial No. 318000001 and Up



Ordering Replacement Parts

To order replacement parts, please supply the part number, the quantity, and the description of each part desired.

Understanding Reference Numbers

Each identified part in an illustration has a reference number. The reference number for a part also appears in the parts list, along with other information about the part.

This catalog uses two special reference number formats, one to indicate parts in a service assembly and another to indicate the quantity of a given part in an illustration.

Service Assembly Reference Numbers

Parts in service assemblies have reference numbers in the form a:b. The a represents the reference number of the entire service assembly and the b represents a sequential number unique to each part within the service assembly.

For example, a wheel assembly might be identified by reference number 6, the tire by 6:1, the valve by 6:2, and the wheel by 6:3. When you order the assembly identified by reference number 6, you receive all parts identified by reference numbers 6:1, 6:2, and 6:3. However, you may also order any part individually. Reference numbers of this type appear in illustration and in parts lists.

Reference Numbers Indicating Quantity

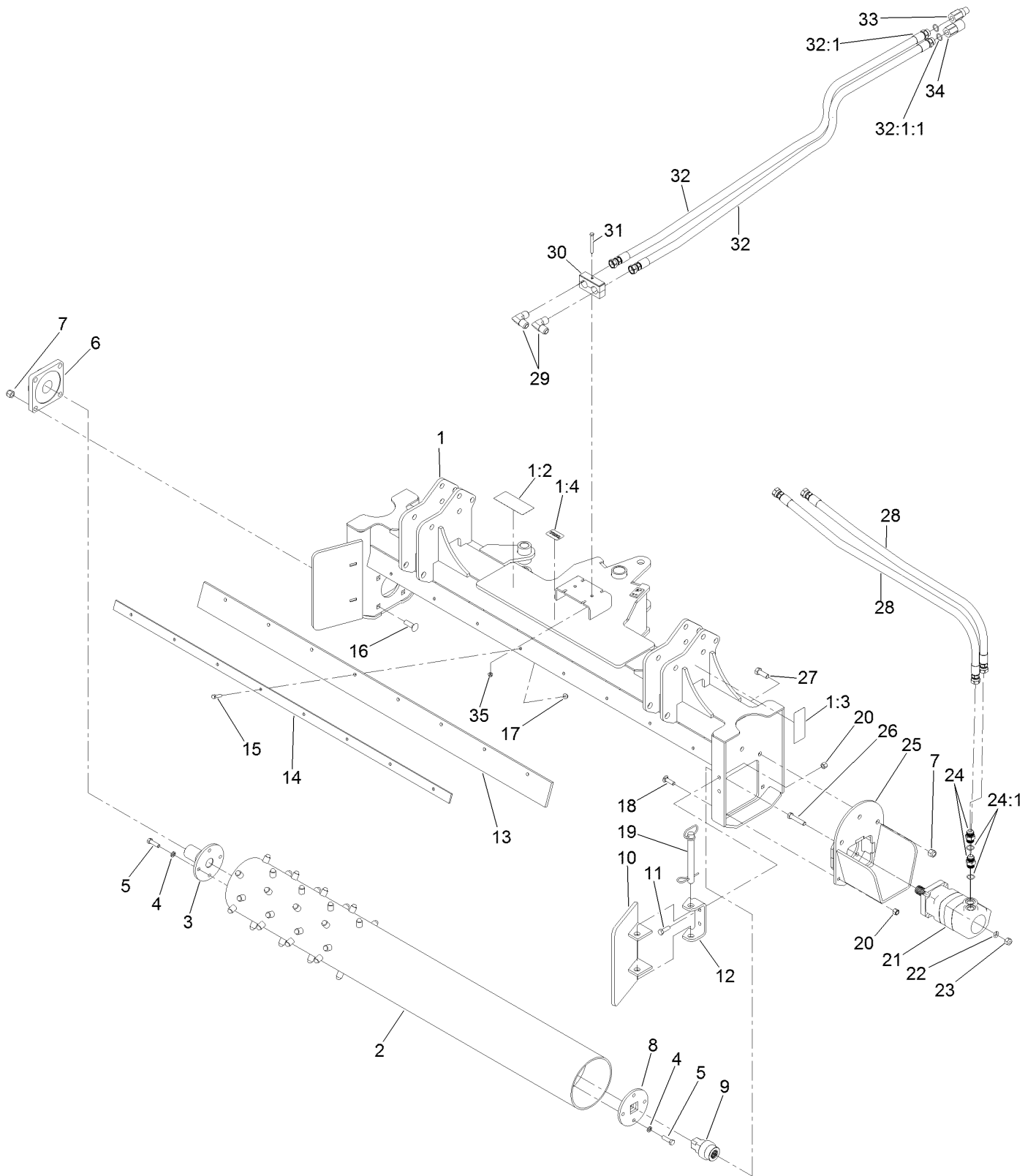
In an illustration, if a reference number indicates more than one part, the reference number has the form nX y. The n represents the quantity of the part, the X is the multiplication symbol, and the y represents the reference number.

For example, in an illustration, the reference number 2X 37 means that two of the parts identified by reference number 37 are indicated.

Contents

Frame and Motor Assembly 4
Qtach and Caster Wheel Assembly 6

Frame and Motor Assembly



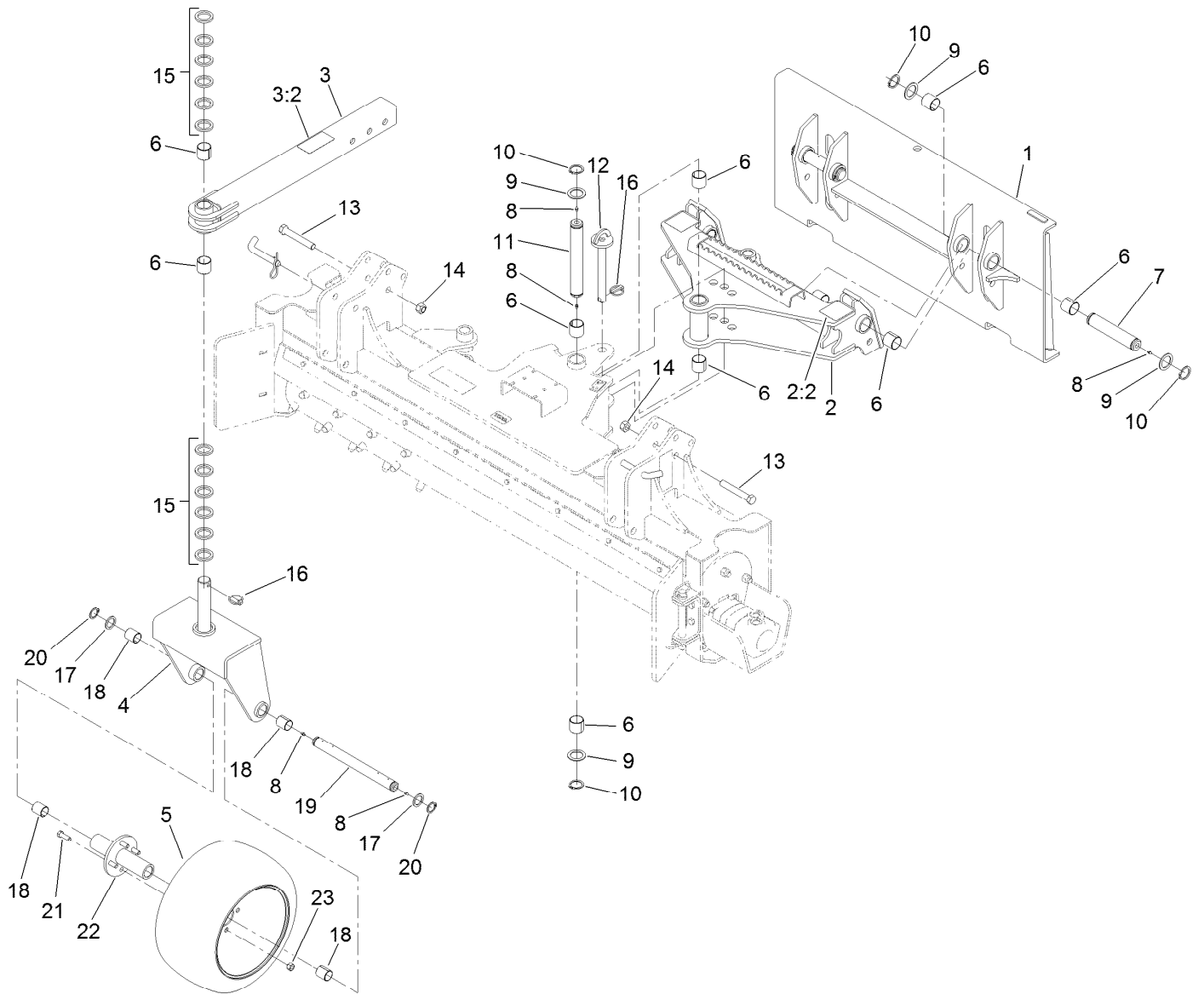
Frame and Motor Assembly (continued)

<i>Ref.</i>	<i>Part Number</i>	<i>Qty.</i>	<i>Description</i>	<i>Ref.</i>	<i>Part Number</i>	<i>Qty.</i>	<i>Description</i>
1	139-2791	1	Frame ASM	20	3296-23	6	Nut-Lock, NI
1:2	138-0539	3	Decal-Danger	21	137-9018	1	Hydraulic Motor ASM
1:3	125-6128	1	Decal-Warning	21:1	139-1403	1	Seal Kit ●
1:4	98-3206	1	Decal	21:2	139-1404	1	Seal Kit ●
2	137-9022	1	Drum-Power Rake	21:3	139-1405	1	Seal Kit ●
3	137-8960	1	Plate-Drum	22	137-8944	4	Washer-Lock
4	3253-7	8	Washer-Lock	23	3296-63	4	Nut-Lock, NI
5	325-7	8	Screw-HH	24	AU218-5064	2	Fitting-Straight
6	137-9016	1	Bearing-Flanged	24:1	237-81	1	O-Ring
7	3296-53	7	Nut-Lock, NI	25	137-9029	1	Mount-HYD Motor
8	137-9031	1	Hub-Adapter	26	AU428-944	4	Screw-HH
9	137-8957	1	Adapter-Motor	27	AU426-1028	3	Screw-HH
10	137-9036	2	Bracket-Guide	28	137-9037	2	Hose ASM
11	325-6	4	Screw-HH	29	137-8987	2	Fitting-Elbow
12	137-9038	2	Mount-Wing	30	137-8969	1	Clamp-Hose
13	137-9026	2	Deflector	31	322-20	1	Screw-HH
14	137-9027	2	Strap-Deflector	32	137-9019	2	Hose ASM
15	323-8	16	Screw-HH	32:1		1	Fitting-Straight ■
16	HDW05603	4	Bolt-CARR	32:1:1	237-81	1	O-Ring
17	104-8301	16	Nut-HF, NI	33	137-8975	1	Fitting-HYD
18	3233-14	2	Screw-CARR	34	137-8974	1	Fitting-HYD
19	137-9045	2	Pin-Hitch	35	104-8300	1	Nut-HF, NI

● Not illustrated

■ Not serviced separately

Qtach and Caster Wheel Assembly



Qtach and Caster Wheel Assembly (continued)

<i>Ref.</i>	<i>Part Number</i>	<i>Qty.</i>	<i>Description</i>	<i>Ref.</i>	<i>Part Number</i>	<i>Qty.</i>	<i>Description</i>
1	137-9023	1	Qtach-Power Rake	12	137-9046	1	Pin-Angle
2	139-2792	1	A-Frame ASM	13	328-9	2	Screw-HH
2:2	125-6107	2	Decal-Warning	14	120-7252	2	Nut-Lock
3	139-2790	2	Caster Arm ASM	15	137-9042	24	Spacer
3:2	131-0711	1	Decal-Warning	16	283-71	3	Pin-Lynch
4	137-9033	2	Fork-Caster	17	110-8195	4	Washer-Steering
5	137-9035	2	Caster Wheel ASM	18	137-4896	8	Bushing
6	137-4897	16	Bushing	19	137-9047	2	Pin-Caster
7	137-9043	2	Pin-Pivot	20	32151-77	4	Ring-Retaining, External
8	137-9002	8	Fitting-Zerk	21	137-9048	8	Screw
9	137-4898	6	Washer	22	137-9034	2	Hub-Caster
10	137-8900	6	Ring-Snap, External	23	92-7483	8	Nut-Lug
11	137-4894	1	Pin-Hinge				



Count on it.