



Dingo 220-D

Model 22302TE

Setup Instructions

Installing the Valve Lever

If the valve lever is not installed, install it as follows:

1. Thread the lever into the pump selector valve (Fig. 1).

Note: The lever should be installed with the bend toward the operator.

2. Tighten the jam nut on the lever to lock it in position.

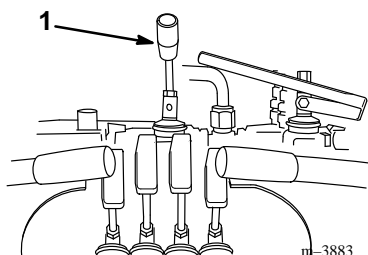


Figure 1

1. Pump selector lever

Installing the Wheels

The traction unit may or may not have been shipped with the wheels installed. If they are not, install the wheels on the wheel hubs, securing them with the supplied lug nuts. Torque the nuts to 55 ft-lb (75 N·m)

Installing the Dust Collector

1. Slide the hose clamp over the collar on the bottom of the dust collector (Fig. 2).
2. Slide the collar on the dust collector over the fitting on the top of the air cleaner (Fig. 2).

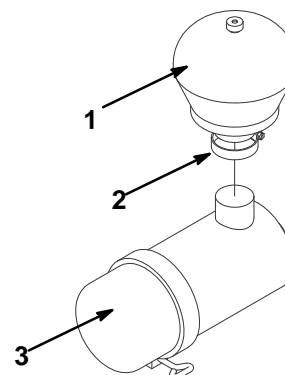


Figure 2

1. Dust collector
2. Hose clamp
3. Air cleaner

m-4492

3. Tighten the hose clamp securely.

Bleeding the Fuel System

Bleed the fuel system to ensure that there is no air in the fuel lines. Refer to the *Operator's Manual* for more information on bleeding the fuel system.

Installing Decals

Install any loose decals in the areas indicated in the following figures (some decals may already be installed on the traction unit):

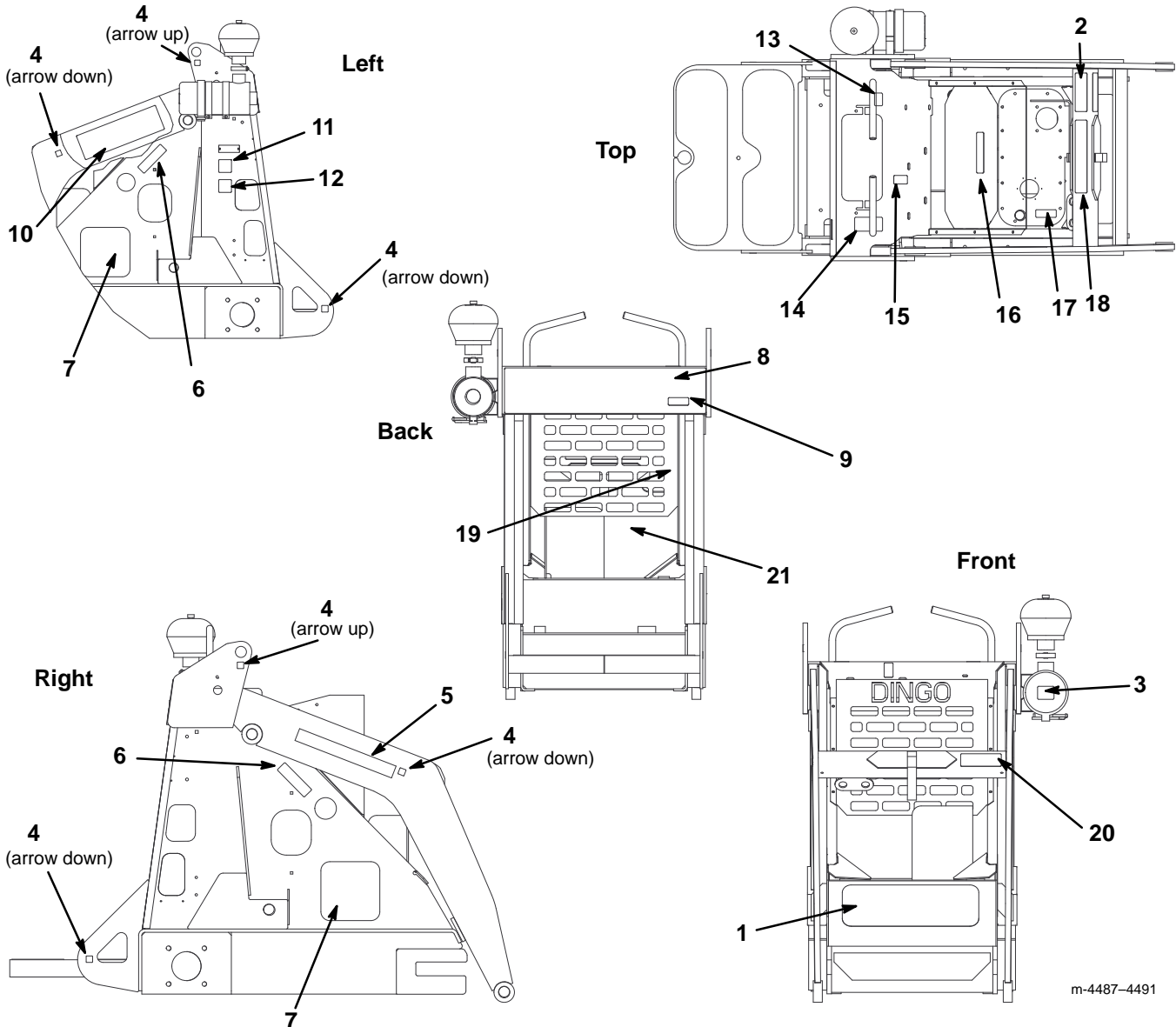


Figure 3

- | | | | |
|---|--|--------------|---|
| 1. 98-4679 | 6. 93-9367 | 12. 99-3095 | 19. 99-3089 (place it near the parking brake lever, inside of the frame) |
| 2. 99-3088 (place it so that it can be read from the operator's position) | 7. 98-4680 | 13. 100-1703 | 20. 99-3088 (place it so that it can be read from the front of the traction unit) |
| 3. 93-7275 | 8. 100-1705 | 14. 100-1704 | 21. 98-8219 (place it near the throttle lever) |
| 4. 93-9084 | 9. 93-6680 | 15. 98-8235 | |
| 5. 98-8218 (also place it on the side of the left arm) | 10. 100-1701 (on the inside of the left arm) | 16. 93-7272 | |
| | 11. 99-3094 | 17. 93-6686 | |
| | | 18. 100-1702 | |