



Form No. 3431-285 Rev A

**Count on it.**

# Parts Catalog

## Rear Roller Brush Kit

**Reelmaster® 5210 or 5410 Series Cutting  
Unit with 5in Reel**

**Model No. 137-5991**



# Ordering Replacement Parts

To order replacement parts, please supply the part number, the quantity, and the description of each part desired.

## Understanding Reference Numbers

Each identified part in an illustration has a reference number. The reference number for a part also appears in the parts list, along with other information about the part.

This catalog uses two special reference number formats, one to indicate parts in a service assembly and another to indicate the quantity of a given part in an illustration.

## Service Assembly Reference Numbers

Parts in service assemblies have reference numbers in the form a:b. The a represents the reference number of the entire service assembly and the b represents a sequential number unique to each part within the service assembly.

For example, a wheel assembly might be identified by reference number 6, the tire by 6:1, the valve by 6:2, and the wheel by 6:3. When you order the assembly identified by reference number 6, you receive all parts identified by reference numbers 6:1, 6:2, and 6:3. However, you may also order any part individually. Reference numbers of this type appear in illustration and in parts lists.

## Reference Numbers Indicating Quantity

In an illustration, if a reference number indicates more than one part, the reference number has the form nX y. The n represents the quantity of the part, the X is the multiplication symbol, and the y represents the reference number.

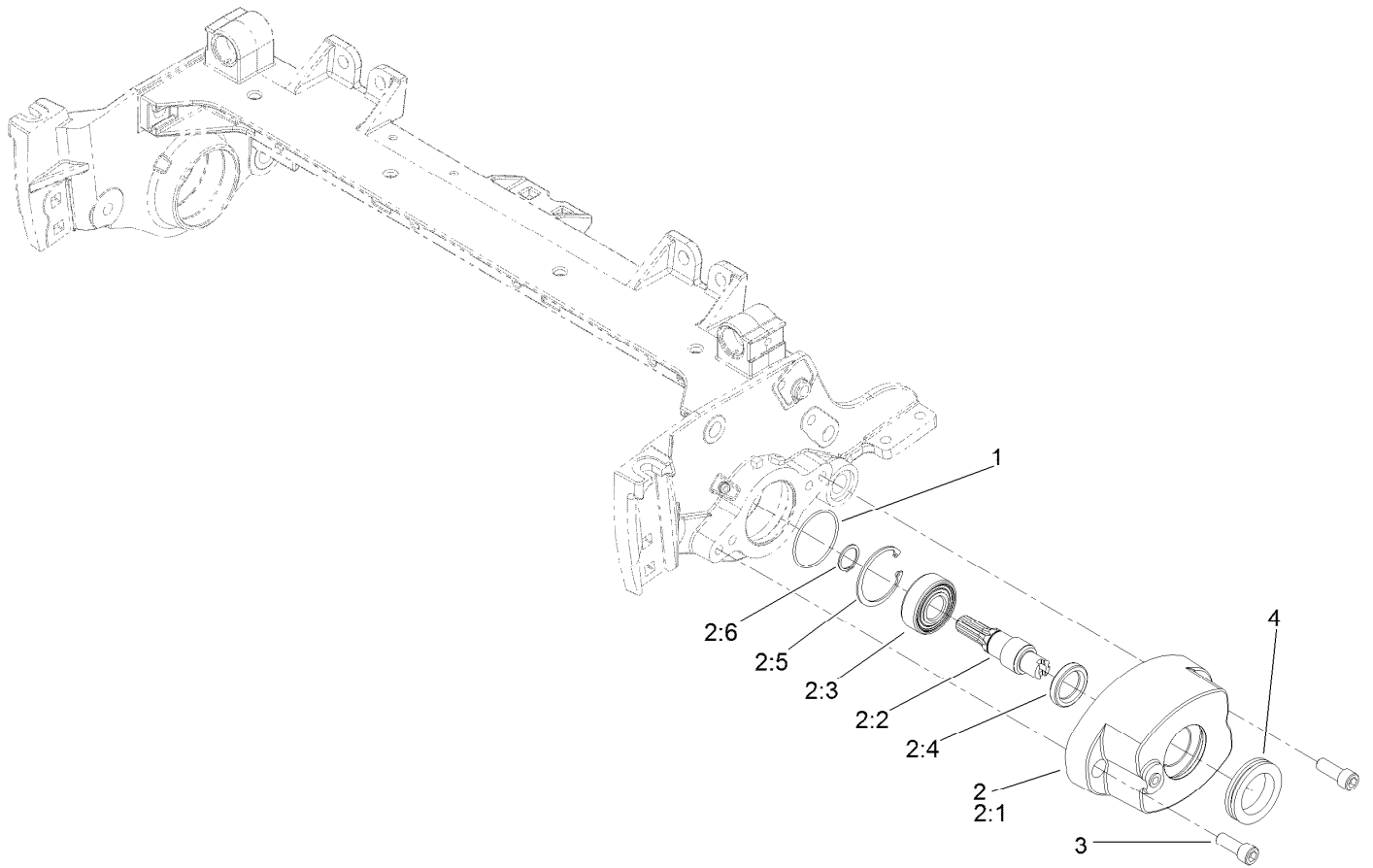
For example, in an illustration, the reference number 2X 37 means that two of the parts identified by reference number 37 are indicated.

# Contents

Drive Assembly ..... 4

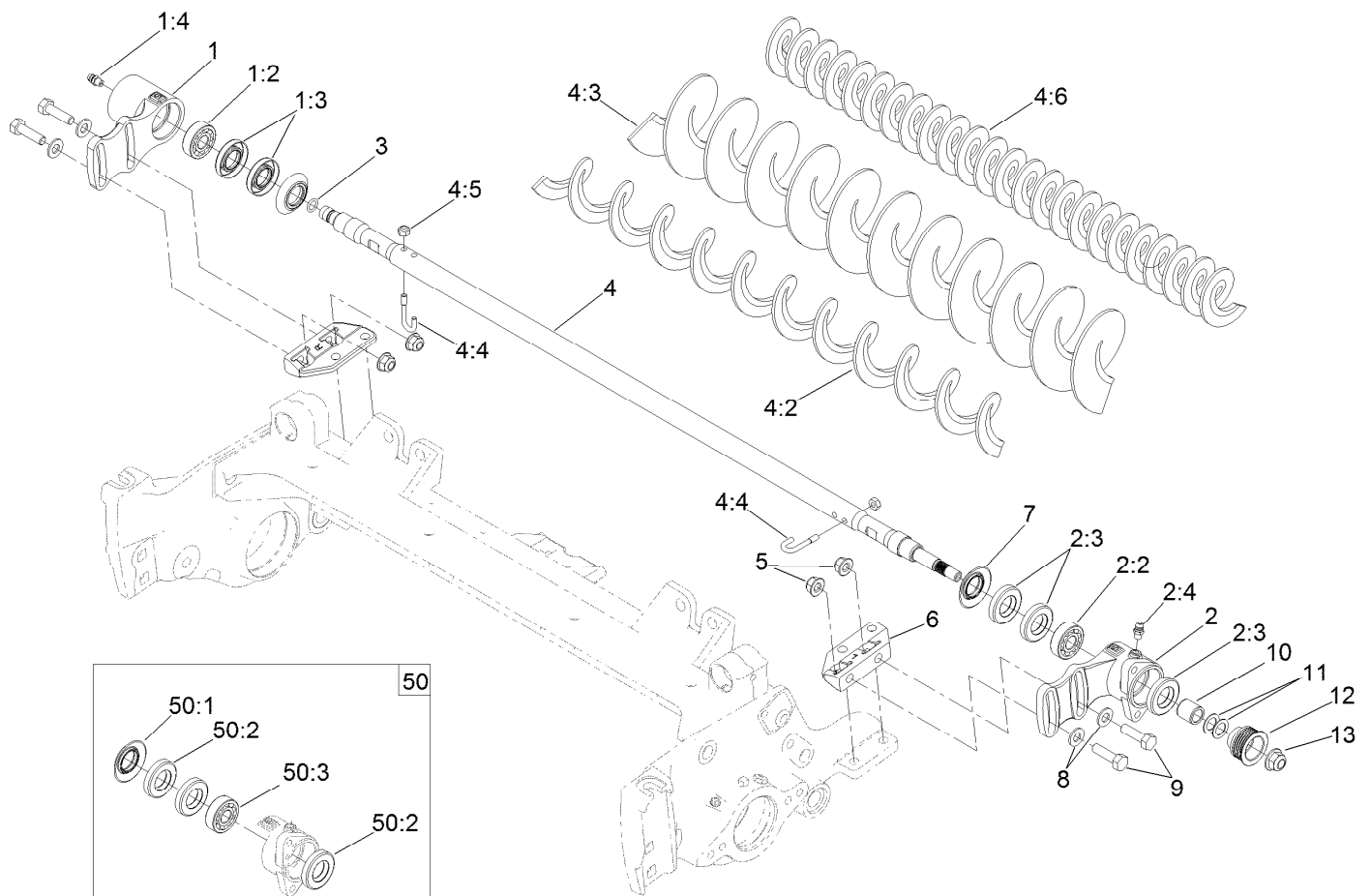
Roller Brush Assembly ..... 5

Belt, Idler and Driver Assembly ..... 6



## Drive Assembly

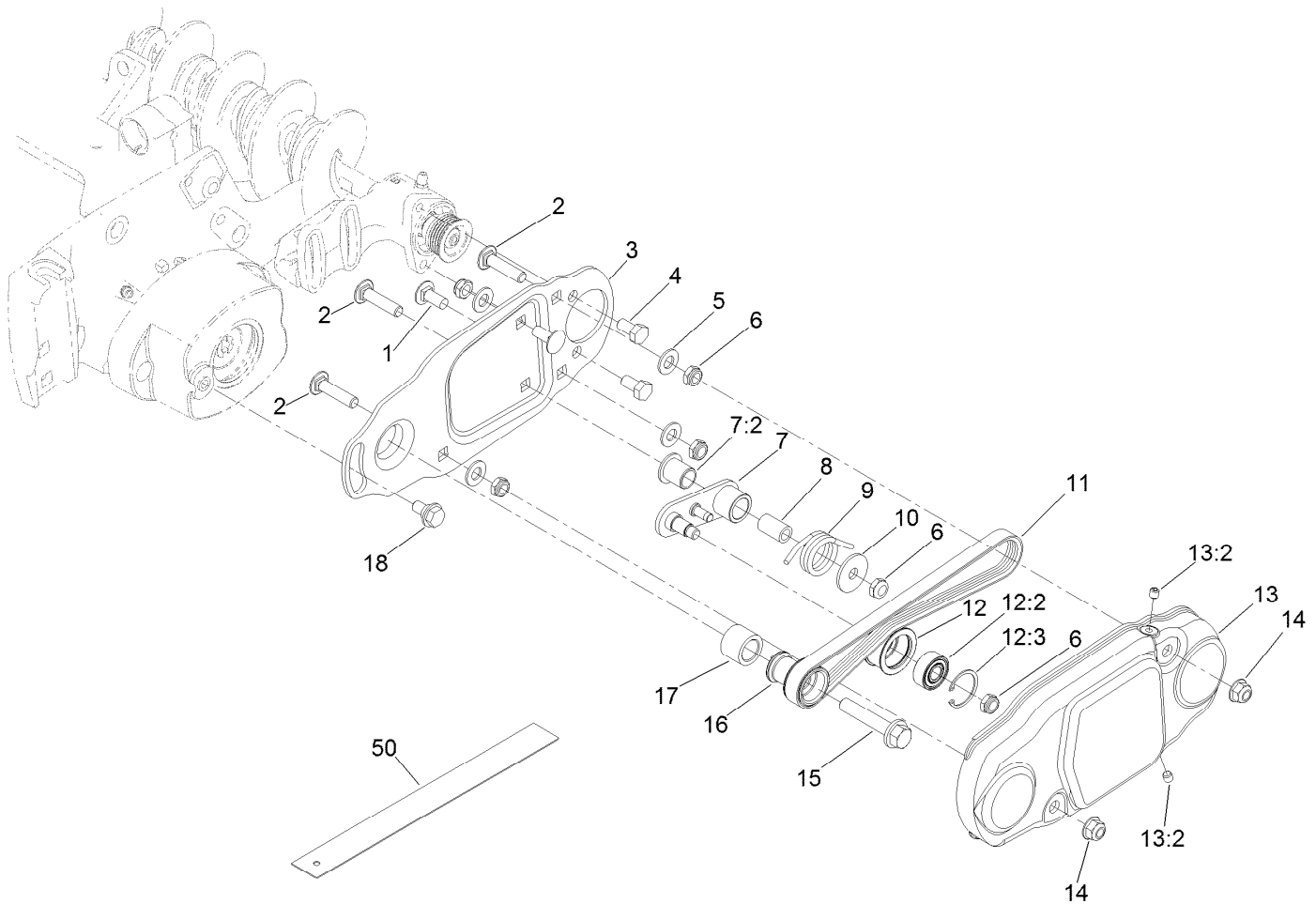
<i>Ref.</i>	<i>Part Number</i>	<i>Qty.</i>	<i>Description</i>
1	112-6968	1	O-Ring
2	108-4200	1	Bearing Housing ASM
2:1	108-4197	1	Housing-Bearing, Drive
2:2	107-7796	1	Shaft-Drive
2:3	93-2559	1	Bearing-Ball
2:4	107-7795	1	Seal-Grease
2:5	32120-62	1	Ring-Retaining
2:6	32120-72	1	Ring-Snap
3	3274-7	2	Screw-HSH
4	240-7	1	Grommet-Rubber



## Roller Brush Assembly

Ref.	Part Number	Qty.	Description	Ref.	Part Number	Qty.	Description
1	108-4207	1	Housing-Bearing, Non Driven	4:6	137-0842	1	HD Brush-Rear Roller, 22In
1:2	95-0707	1	Bearing-Aligning, Self	5	104-8300	4	Nut-HF, NI
1:3	106-8530	2	Seal-Grease	6	108-4480	2	Bracket-Mounting
1:4	302-5	1	Fitting-Grease	7	108-4172	2	Seal-Excluder
2	108-4206	1	Housing-Bearing, Driven	8	94-6936	4	Washer-Hardened
2:2	95-0707	1	Bearing-Aligning, Self	9	322-16	4	Screw-HH
2:3	106-8530	3	Seal-Grease	10	108-4491	1	Spacer
2:4	302-5	1	Fitting-Grease	11	112-6957	2	Washer-Hardened
3	107-8844	1	O-Ring	12	115-0821	1	Pulley-Driven, RRB (5-Rib)
4	112-6966	1	Roller Brush ASM (22In)	13	104-8301	1	Nut-HF, NI
4:2	108-4193	1	Brush-Roller	50	110-4086	1	Groomer/RRB Bearing And Seal Kit
4:3	110-1740	1	Brush-Roller (22In High HOC) •	50:1	95-0707	1	Bearing-Aligning, Self
4:4	105-9632	2	Bolt-J	50:2	106-8530	3	Seal-Grease
4:5	3296-2	2	Nut-Lock, NI	50:3	108-4172	1	Seal-Excluder

• Optional Equipment



## Belt, Idler and Driver Assembly

Ref.	Part Number	Qty.	Description
1	3230-23	2	Screw-CARR
2	112-6950	3	Screw-CARR
3	115-0896-03	1	Plate-Brush, 5 Inch
4	322-2	2	Screw-HH
5	3256-45	4	Washer-Flat
6	3296-47	6	Nut-Lock, NI
7	115-0834	1	Idler Arm ASM
7:2	125-8775	1	Bushing-Flange
8	115-0826	1	Spacer-Idler
9	115-0839	1	Spring-Idler
10	5-4460	1	Washer-Pivot
11	115-0894	1	Belt-Brush, 5 Inch (5-Rib)

Ref.	Part Number	Qty.	Description
12	114-9397	1	Idler Pulley ASM
12:2	110-1701	1	Bearing
12:3	32151-60	1	Ring-Snap
13	115-0898	1	Brush Cover ASM
13:2	108-0989	2	Screw-Set
14	104-8300	2	Nut-HF, NI
15	66-9302	1	Screw-HHF, Whiz
16	115-0899	1	Pulley-Driver, 5 Inch
17	108-4477	1	Spacer
18	27-0411	1	Screw-Shoulder
50	114-5446	1	Tool-Alignment ●

● Optional Equipment

**Notes:**



**Count on it.**