



# CE Kit

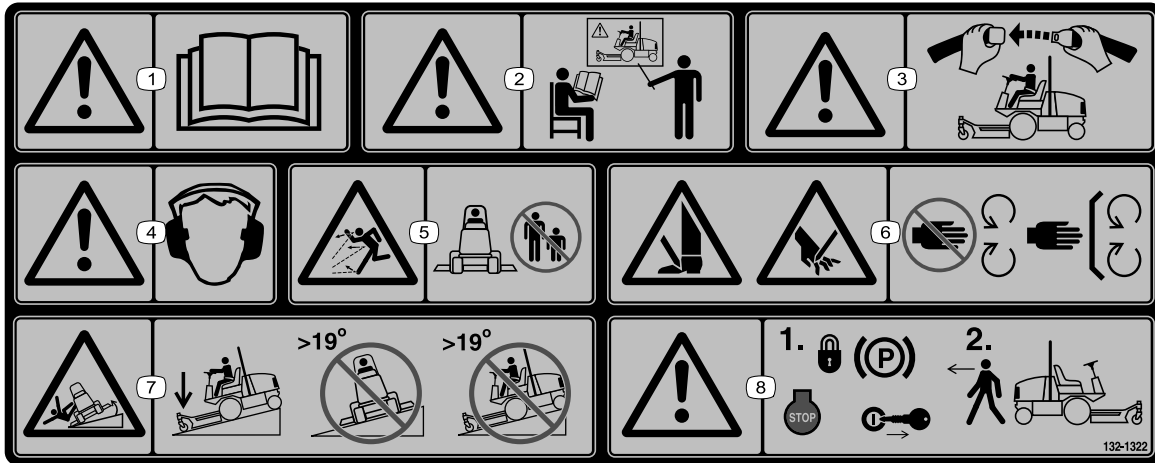
## 2016 and After Groundsmaster® 5900 Series Traction Unit

Model No. 132-1340

### Installation Instructions

# Safety

## Safety and Instructional Decals



132-1322

decal132-1322

**Note:** This machine complies with the industry standard stability test in the static lateral and longitudinal tests with the maximum recommended slope indicated on the decal. Review the instructions for operating the machine on slopes in the *Operator's Manual* as well as the conditions in which you would operate the machine to determine whether you can operate the machine in the conditions on that day and at that site. Changes in the terrain can result in a change in slope operation for the machine.

1. Warning—read the *Operator's Manual*.
2. Warning—all operators should be trained before operating the machine.
3. Warning—wear the seatbelt.
4. Warning—wear hearing protection.
5. Thrown object hazard—keep bystanders away.
6. Cutting/dismemberment hazard of hands or feet—stay away from moving parts; keep all guards and shields in place.
7. Tipping hazard—lower the cutting unit when driving down slopes; do not operate on slopes greater than 19°.
8. Warning—engage the parking brake, shut off the engine, and remove the key before leaving the machine.



# Installation

## Loose Parts

Use the chart below to verify that all parts have been shipped.

Description	Qty.	Use
No parts required	—	Prepare the machine for installation.
Latch	1	Install the hood latch.
Latch key	1	
Latch bracket	1	
Carriage bolt (5/16 x 3/4 inch)	1	
Flange nut (5/16 inch)	1	
Screw (5/16 x 3/4 inch)	4	Install the side-panel hardware.
Push nut (5/16 inch)	4	
Hex nut (5/16 inch)	1	
Thrust washer	11	Install the belt-cover hardware.
Push nut (5/16 inch)	11	
No parts required	—	Adjust the machine software.
CE warning decal (Part No. 132-1322)	1	Install the decals.
CE mark decal	1	

## Preparing the Machine

1. Park the machine on a level surface.
2. Lower the cutting units.
3. Engage the parking brake.
4. Shut off the engine and remove the key.

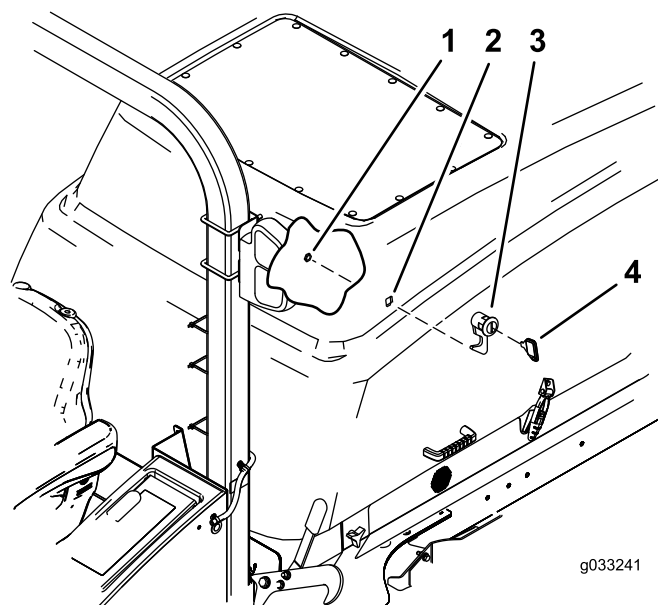
## Installing the Hood Latch

Use the key to lock and unlock the latch.

1. Unlatch and raise the hood.
2. Remove the existing rubber grommet in the left side of the hood.
3. Remove the locking nut from the latch assembly ([Figure 1](#)).
4. Install the locking latch through the hole in the left side of the hood ([Figure 1](#)).

**Note:** Ensure the catch is positioned inside the hood and pointing downward.

5. Install the locking nut onto the latch to secure it to the hood.

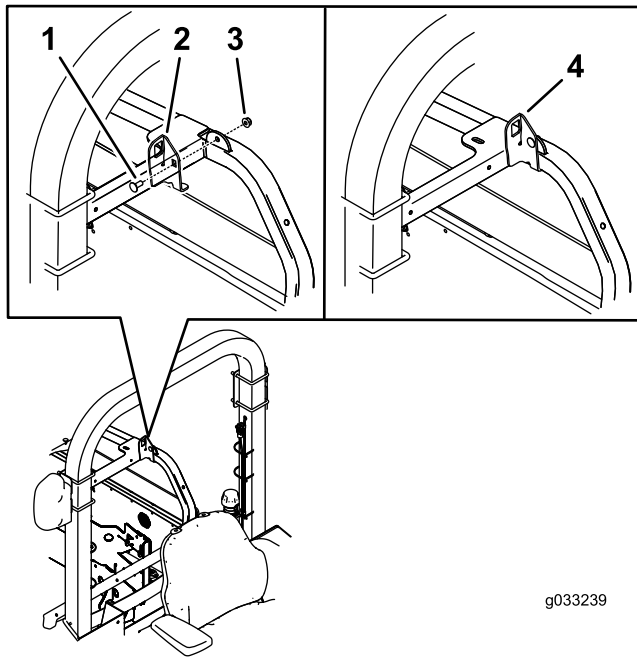


**Figure 1**

1. Existing nut from the latch
2. Hole in the hood
3. Latch
4. Key

6. Install the latch bracket to the frame with a carriage bolt (5/16 x 3/4 inch) and flange nut (5/16 inch) ([Figure 2](#)).
7. Close the hood slowly to see if latch catches.
8. If it does not, loosen the screws securing the latch bracket and adjust the bracket as necessary.
9. Tighten the bolt and verify that the latch catches.

- Torque the nut and bolt to 40.7 to 49.7 N·m (30 to 37 ft-lb).



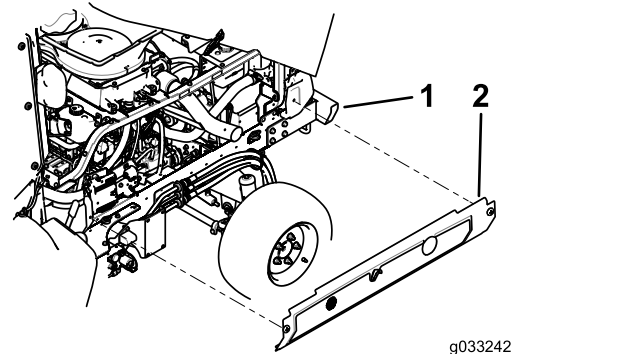
**Figure 2**

- |                  |                      |
|------------------|----------------------|
| 1. Carriage bolt | 3. Flange nut        |
| 2. Bracket       | 4. Bracket installed |

- Install the side panel with the retained fastener to the machine ([Figure 4](#)).

**Note:** Do not tighten the screws more than 14 N·m (120 in-lb).

- Repeat this procedure for the opposite side.
- Remove the hex nut when finished and discard.

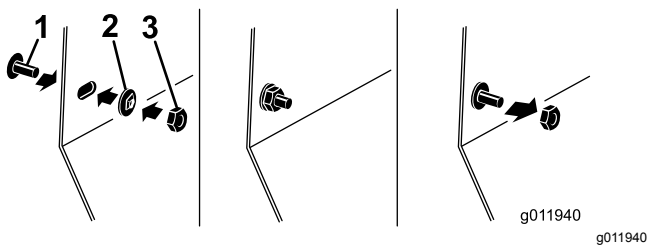


**Figure 4**

- |                  |               |
|------------------|---------------|
| 1. Machine frame | 2. Side panel |
|------------------|---------------|

## Installing the Side-Panel Hardware

- Remove the existing hardware that secures the side panel to the machine and remove the side panel.
- Install the 2 screws (5/16 x 3/4 inch) to the side panel and turn it over to install the 2 push nuts (5/16 inch) onto the screw ([Figure 3](#)).



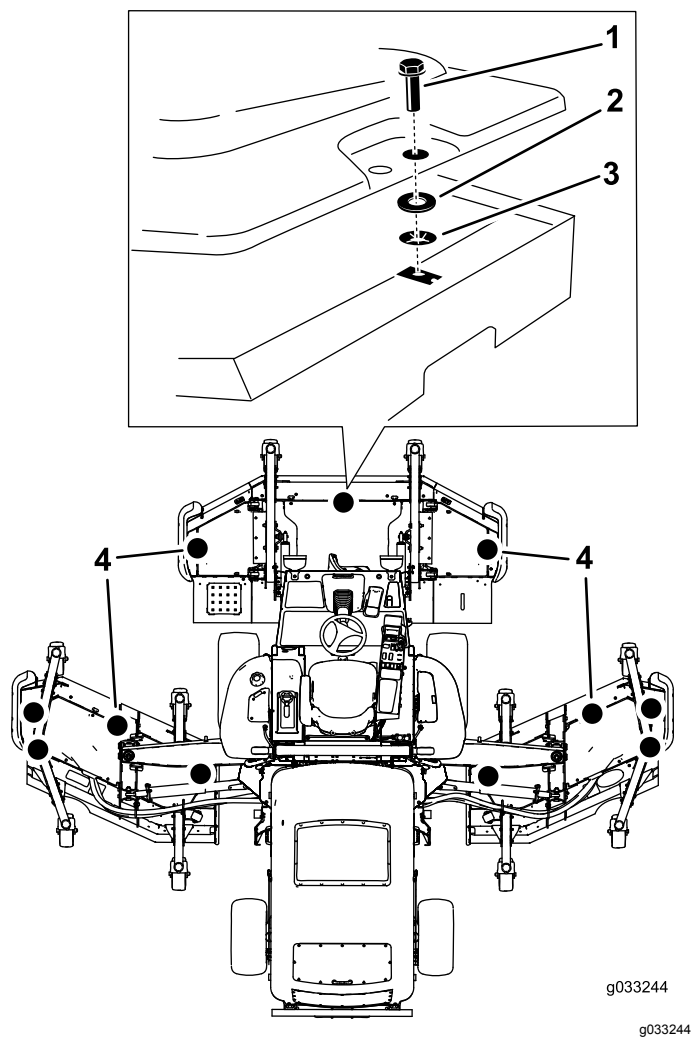
**Figure 3**

- |                            |                        |
|----------------------------|------------------------|
| 1. Screw (5/16 x 3/4 inch) | 3. Hex nut (5/16 inch) |
| 2. Push nut (5/16 inch)    |                        |

- Install the hex nut (5/16 inch) onto the screw to move the push nut tight against the side panel ([Figure 3](#)).
- Remove the hex nut and move the remaining push nut tight against the side panel.

# Installing the Belt-Cover Hardware

1. Remove the bolt that secures the belt cover to the mower deck and remove the belt covers.
2. Install the existing bolt into the dedicated hole in the belt cover.
3. Install the thrust washer and push nut from underneath to the existing bolt to retain it to the belt cover as shown in [Figure 5](#).
4. Install the belt cover to the mower deck. Use the retained bolt to secure it to the mower deck.
5. Repeat for all the belt cover hardware.



**Figure 5**

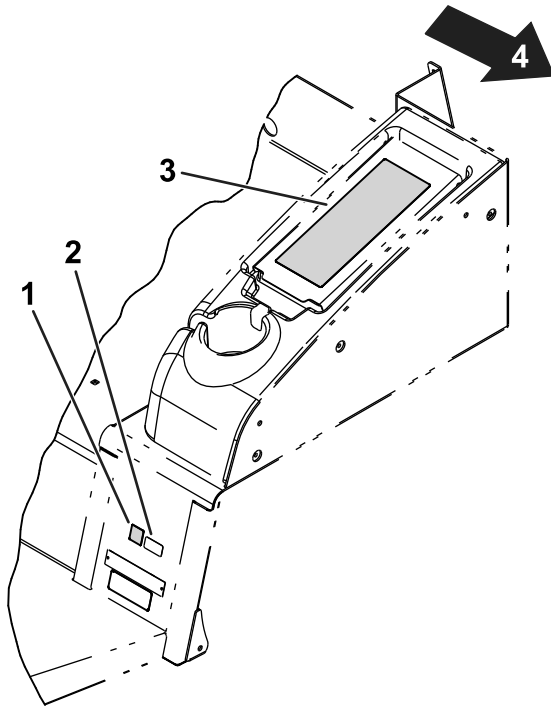
- |                  |   |
|------------------|---|
| 1. Bolt          | 3. Push nut (5/16 inch)                   |
| 2. Thrust washer | 4. Install a bolt at all marked locations |

# Adjusting the Machine Software

Contact your authorized Toro distributor to set the machine software to the CE Mode.

## Installing the Decals

Refer to [Figure 6](#) for this procedure.



g243540

**Figure 6**

- |                          |                             |
|--------------------------|-----------------------------|
| 1. CE mark decal         | 3. CE warning decal         |
| 2. Production year decal | 4. Left side of the machine |

1. Install the CE warning decal (Part No. 132-1322) over the existing warning decal (Part No. 117-2754) on the storage center cover.

**Note:** The storage center is located to the left of the seat.

2. Install the CE mark decal next to the production year decal.

**Notes:**

**Notes:**



**Count on it.**