



# Parts Catalog

## For Trimmer/Brushcutter

Model No. 51908—9900001 and Up

## Parts Catalog

---

### Ordering Replacement Parts

To order replacement parts, please supply: the part number, the quantity, and the description of each part desired.

### Understanding Reference Numbers

Each identified part in an illustration has a reference number. The reference number for a part also appears in the parts list, along with other information about the part.

This catalog uses two special reference number formats, one to indicate parts in a service assembly and another to indicate the quantity of a given part in an illustration.

### Service Assembly Reference Numbers

Parts in service assemblies have reference numbers in the form **a:b**. The **a** represents the reference number of the entire service assembly and the **b** represents a sequential number unique to each part within the service assembly.

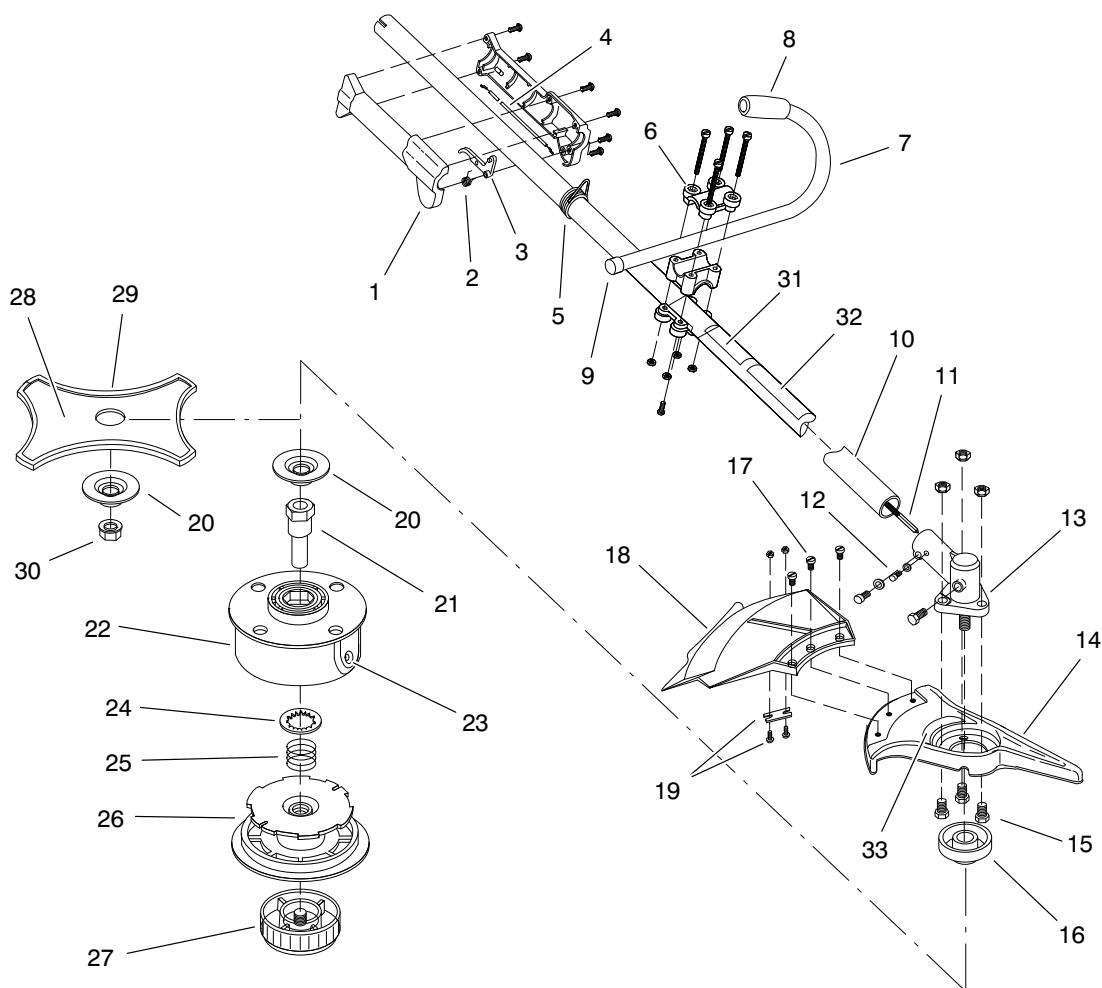
For example, a wheel assembly might be identified by reference number **6**, the tire by **6:1**, the valve by **6:2**, and the wheel by **6:3**. When you order the assembly identified by reference number **6**, you receive all parts identified by reference numbers **6:1**, **6:2**, and **6:3**. However, you may also order any part individually.

Reference numbers of this type appear in illustrations and in part lists.

### Reference Numbers Indicating Quantity

In an illustration, if a reference number indicates more than one part, the reference number has the form **nX y**. The **n** represents the quantity of the part, the **X** is the multiplication symbol, and the **y** represents the reference number.

For example, in an illustration, the reference number **2X 37** means that two of the parts identified by reference number **37** are indicated.

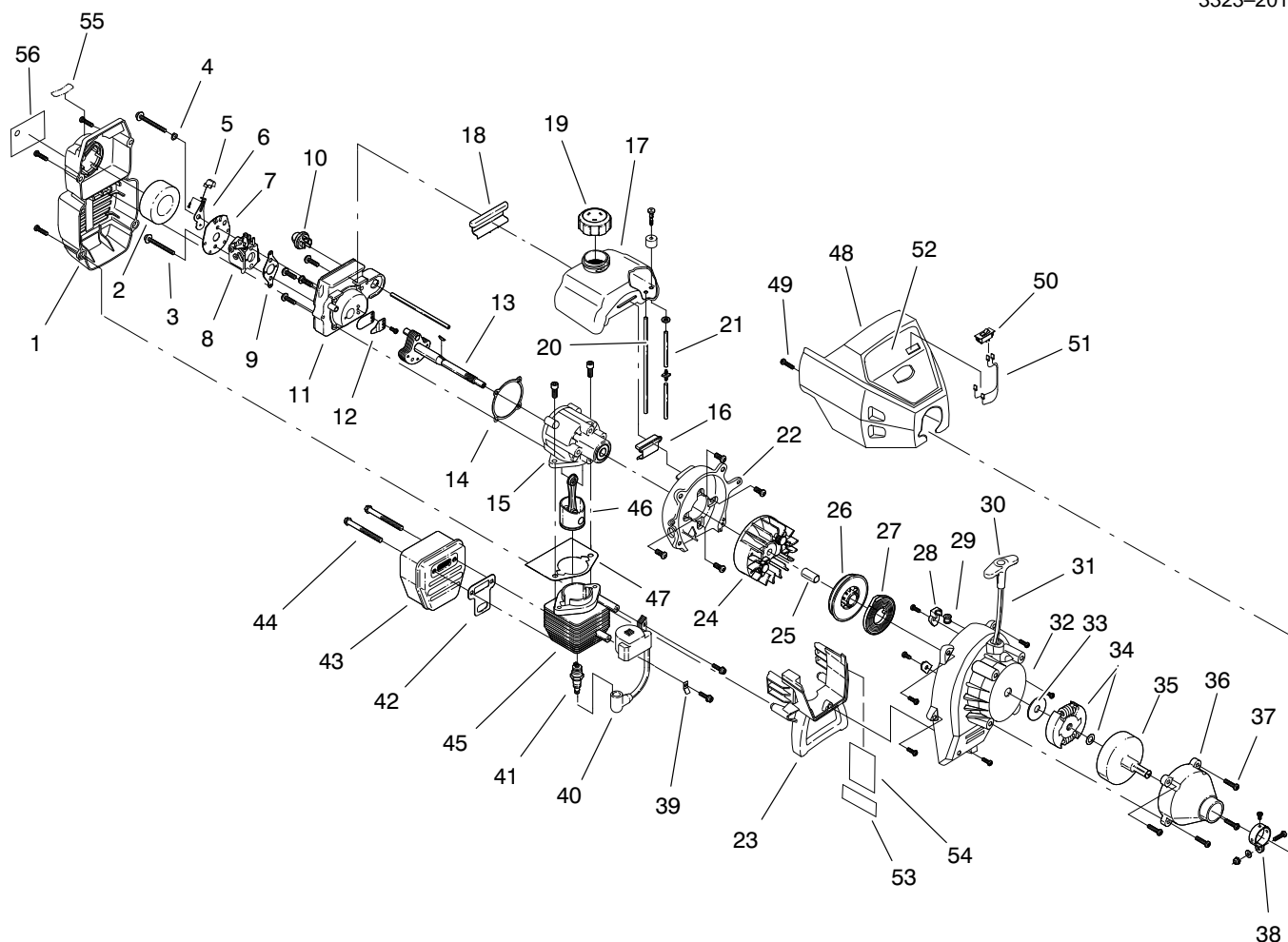


## Boom And Trimmer Assembly

Ref. No.	Part No.	Qty.	Description
1	180277	1	Throttle Housing & Trigger ASM
2	610314	1	Spring-Throttle Trigger
3	180975	1	Throttle Trigger
4	182068	1	Throttle Cable ASM
5	610327	1	Support-Shoulder Harness
6	683295	1	Handle Bracket ASM
7	181099	1	J-Handle ASM (Includes Ref #8 & 9)
8	612831	1	Grip
9	612021	1	Tube Closure
10	92-3287	1	Housing-Drive Shaft
11	180406	1	Flexible Drive Shaft
12	684502	1	Mounting Hardware & Grease Plug ASM
13	147488	1	Gearbox ASM (Incl. Ref #12, 15, 16, 30)
14	147492	1	Shield Mount
15	147539	3	Screw-Shield Mounting
16	147489	1	Blade Driver
17	683304	3	Screw-Shield Mounting
18	683299	1	Shield & Blade ASM (Includes Ref #19)
19	682061	1	Blade ASM
20	147490	1	Washer-Retaining

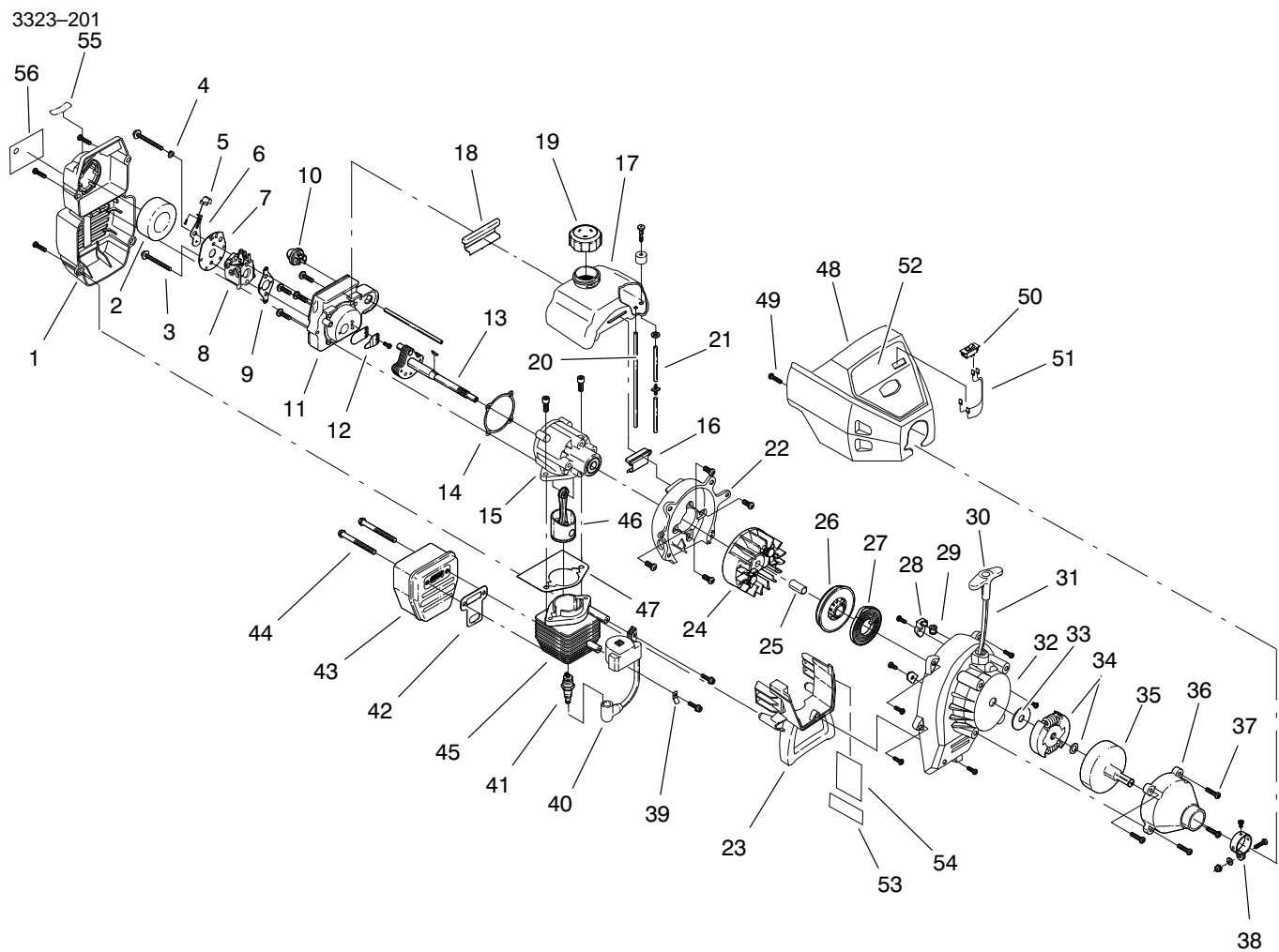
Ref. No.	Part No.	Qty.	Description
21	612483	1	Spool Shaft
22	683301	1	Outer Spool & Eyelet
23	145566	1	Eyelet
24	612026	1	Retainer
25	610636	1	Spring
26	147495	1	Inner Reel
27	180814	1	Bump Knob ASM
28	145873	1	Blade
29	613231	1	Blade Cover
30	613221	1	Nut-Lock
31	92-3328	1	Decal-Safety Symbols
32	92-3323	1	Decal-Safety
33	92-3325	1	Decal-Warning, Blade
**	613226	1	Locking Rod Tool
**	682075	1	Shoulder Harness ASM
**	180120	1	Replacement Line (50 ft.)
**	92-3251	1	Reel & Line ASM
**	147489	1	Complete Head ASM (Includes Ref #21-27)
**	180014	1	Blade Retaining Kit (Includes Ref #20&30)
**	66-2090	1	Toro 2-Cycle Oil
**	93-4471	1	Safety Glasses

\*\* Not Illustrated – Optional Accessories



## Engine Assembly

Ref. No.	Part No.	Qty.	Description	Ref. No.	Part No.	Qty.	Description
1	182059	1	Cover ASM (Includes Ref# 2)	20	181168	1	Fuel Return Line
2	180350	1	Filter-Air Cleaner	21	682039	1	Fuel Line Assembly
3	180351	1	Carburetor Mounting Screw ASM	22	683065	1	Shroud ASM
4	180226	1	Washer-Wavey	23	182064	1	Shroud Extension & Stand
5	182201	1	Choke Lever ASM (Includes Ref #6)	24	180929	1	Flywheel ASM
6	182202	1	Choke Knob & Screw	25	181065	1	Spacer
7	182203	1	Choke Lever & Plate (Includes Ref #5)	26	181597	1	Recoil Pulley
8	182062	1	Carburetor ASM	27	613102	1	Recoil Spring
9	610675	1	Gasket-Carburetor	28	180930	1	Pulley Retainer ASM
10	683974	1	Primer & Hose ASM	29	611061	1	Rope Guide
11	182063	1	Carburetor Mount ASM	30	181079	1	Pull Handle
12	684451	1	Reed ASM	31	613103	1	Rope
13	181498	1	Power Shaft ASM	32	181499	1	Housing-Starter ASM
14	612115	1	Gasket-Carburetor Mount	33	181074	1	Washer-Clutch
15	180026	1	Crank Case ASM (Includes Ref #13)	34	181445	1	Rotor-Clutch ASM
16	145308	1	Front Mounting Pad	35	153592	1	Drum-Clutch ASM
17	181502	1	Fuel Tank ASM (Includes Ref #19-21)	36	180098	1	Cover-Clutch ASM
18	612134	1	Rear Mounting Pad	37	145888	4	Screw-Clutch Cover
19	180000	1	Fuel Cap ASM	38	153597	1	Upper Clamp ASM
				39	611063	1	Ground Tab
				40	181937	1	Module ASM
				41	610311	1	Spark Plug
				42	182065	1	Gasket-Exhaust
				43	182066	1	Muffler ASM (Includes Ref #44)



## Engine Assembly (Continued)

Ref. No.	Part No.	Qty.	Description
44	147575	2	Muffler Mounting Bolt
45	181622	1	Cylinder ASM
46	684449	1	Piston & Rod ASM
47	610674	1	Gasket Cylinder
48	181500	1	Cover-Engine
49	180230	2	Screw-Engine Cover
50	683069	1	Switch
51	683068	1	Lead Wires
52	92-3343	1	Decal-Toro Housing
53	92-3332	1	Decal-Warning, Hot Surface
54	95-5241	1	Decal-Carb
55	92-5242	1	Decal-Choke Position
56	92-5243	1	Decal-Fuel & Oil Mix
*	180034	1	Hardware Kit-Engine
*	182067	1	Gasket Kit-Engine
*	180602	1	Repair Kit-Carburetor (Walbro)
*	180090	1	Repair Kit-Carburetor (Zama)
*	181069	1	Repair Kit-Diaphragm Gasket (Walbro)
*	180091	1	Repair Kit-Diaphragm Gasket (Zama)
*	180530	1	Piston Ring

Ref. No.	Part No.	Qty.	Description
*	181623	1	Short Block ASM (Includes Ref #13, 15, 41, 45-47)
*	610676	1	Key-Flywheel
*	181501	1	Screw Set-Starter Housing
*	95-5295	1	Card-Start Alert
*	95-5294	1	Tag-Caution, Oil Mix

\* Not Illustrated