



# Three-Wheel Drive Weight Kit

## Greensmaster® 3300/3400 Series Traction Unit

Model No. 120-5750

### Installation Instructions

# Installation

## Loose Parts

Use the chart below to verify that all parts have been shipped.

Description	Qty.	Use
Wheel weight	1	Install the kit.
Weight plate	3	
Locknut	4	
Thrust washer	2	
Stud	2	
Wheel weight adapter	2	
Hex-head screw	2	

**Important:** GR3300/3320 will comply with EN ISO 5395 and ANSI B71.4-2017 when this kit is installed in conjunction with the 3WD kit.

- Park the machine on a level surface.
- Shut off the engine, wait for all moving parts to stop, engage the parking brake, and remove the key.
- Raise the machine with a jack at the jack point (Figure 1).
- Remove the 4 lug nuts on the wheel in pairs positioned diagonally from each other (Figure 1).
- Remove the tire and set it aside to be installed later.
- Remove the 2 retaining bolts that secure the wheel motor to the castor fork (Figure 1).
- Mount 3 weight plates to the right side of the castor fork with 2 hex-head bolts (1/2 x 6 inch) and 2 locknuts from the kit (Figure 1).
 

**Note:** Torque the locknuts to 65 to 85 ft-lb (88 to 115 N·m).
- Position the weight onto the wheel rim of the removed tire to determine the location of the valve stems and the weight mounting fasteners.
 

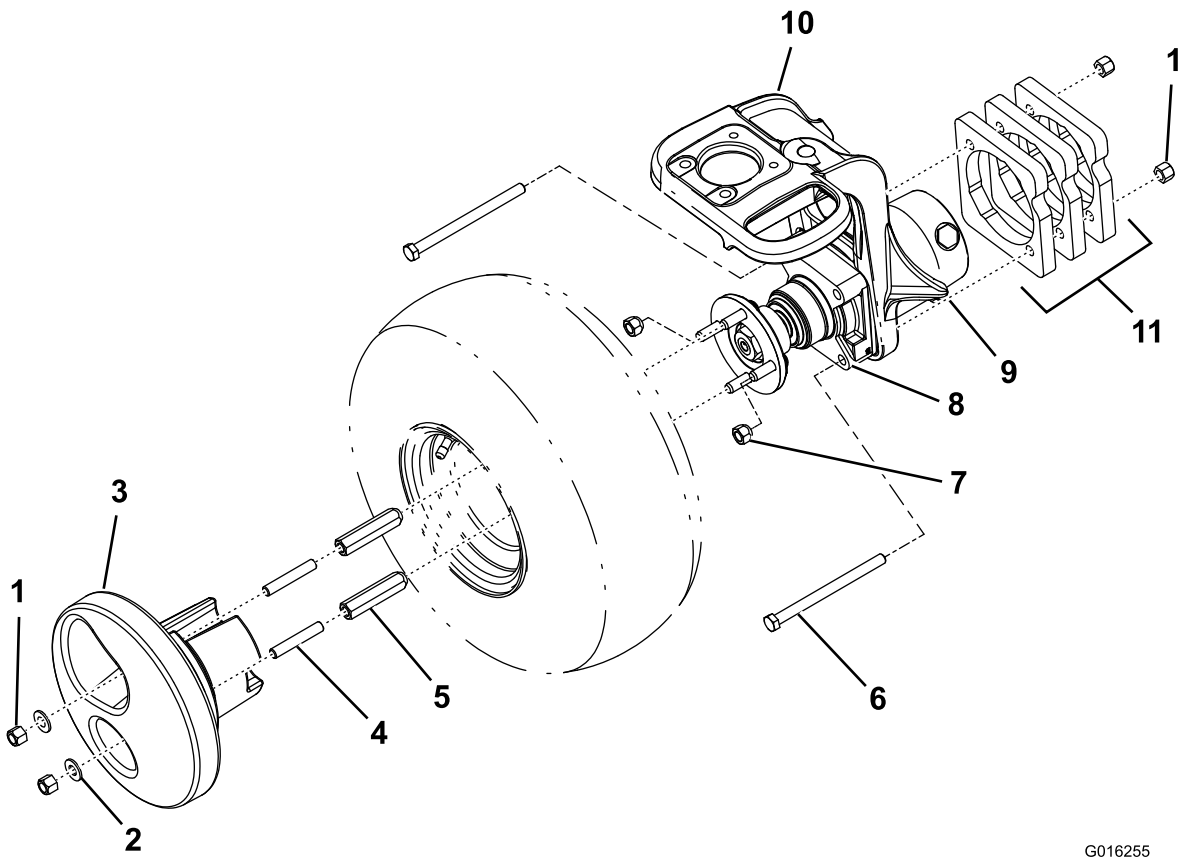
**Note:** Mark the 2 holes on the wheel where the weight mounting fasteners will go.
- Install the tire with 2 lug nuts previously removed in the other 2 (unmarked) holes.
- Thread the 2 weight adapters from the kit onto the 2 remaining wheel studs (marked holes).
 

**Note:** Position the weight adapter so that the tapered end faces the wheel.
- Torque the lug nuts and the weight adapters to 65 to 85 ft-lb (88 to 115 N·m).
- Thread a stud into each of the 2 weight adapters all the way.
- Install the wheel weight over the studs, weight adapters, and valve stem.
 

**Important:** Do not damage the valve stem.
- Secure the wheel weight to the adapters with two washers and locknuts.
 

**Note:** Torque the locknuts to 65 to 85 ft-lb (88 to 115 N·m).
- Lower the machine.
- Torque the lug nuts, weight adapters, and locknuts to 65 to 85 ft-lb (88 to 115 N·m) every 200 operating hours.





G016255

g016255

**Figure 1**

- |                      |                             |                       |
|----------------------|-----------------------------|-----------------------|
| 1. Locknut (4)       | 5. Wheel weight adapter (2) | 9. Jack point         |
| 2. Thrust washer (2) | 6. Hex head bolt (2)        | 10. Castor fork       |
| 3. Wheel weight      | 7. Lug nut (4)              | 11. Weight plates (3) |
| 4. Stud (2)          | 8. Wheel motor              |                       |