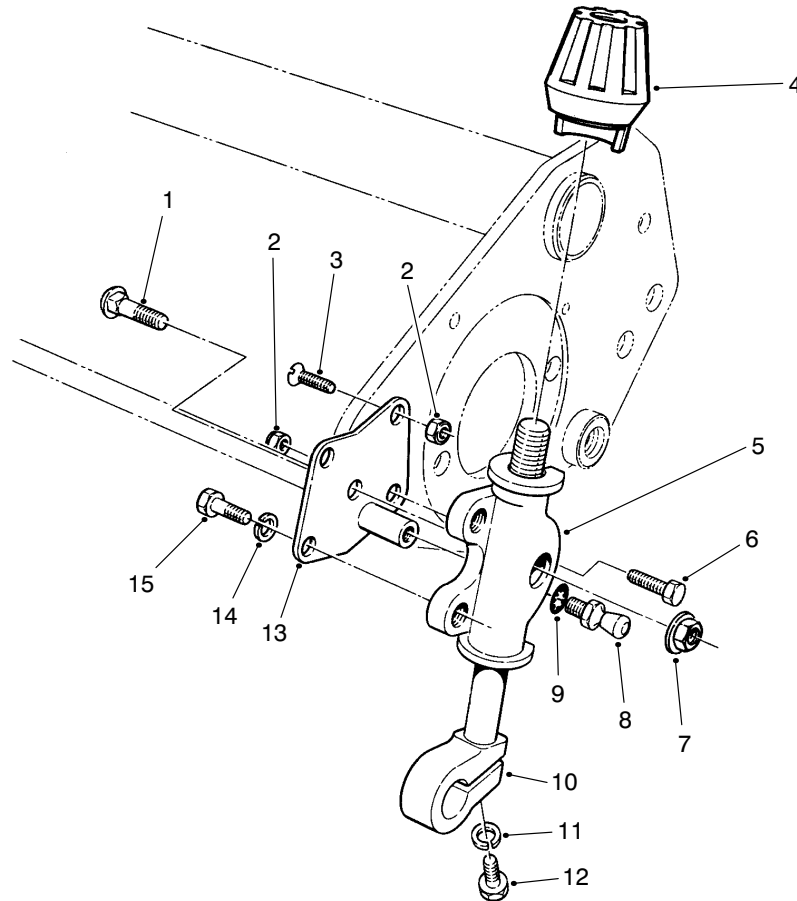




Model No. 04455

Parts Catalog

Grooming Reel Kit for Greensmaster® 3000



T-0329

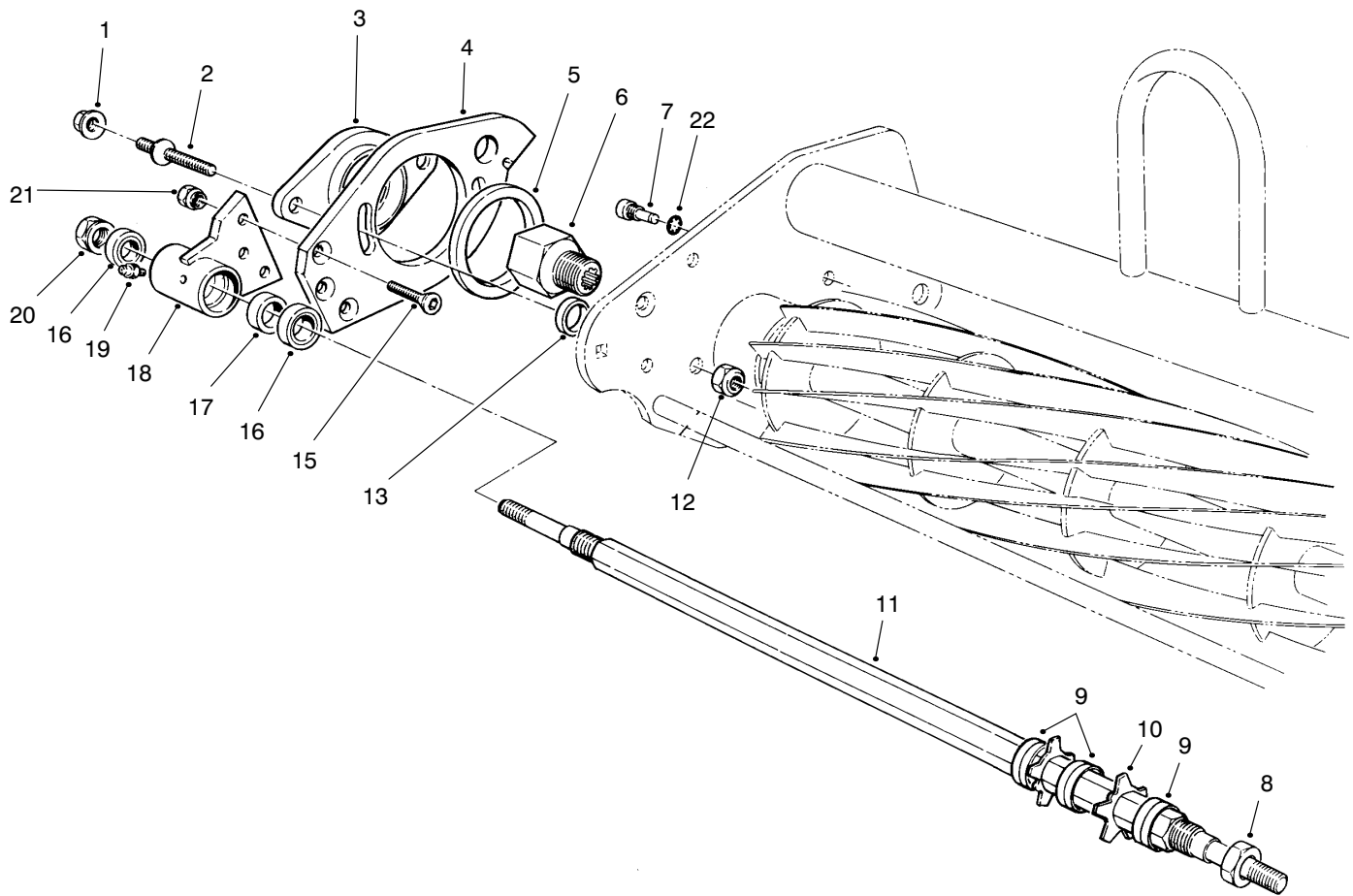
Roller Adjustment Assembly

Ref. No.	Part No.	Description	No. Used
1	3230-5	Bolt - Carriage	6
2	3296-47	Nut - Lock	12
3	32108-20	Screw - Machine Flat Hd.	6
4	65-8600	Knob - Height Adjustment	6
5	65-9490	Bracket - HOC	6
6	322-3	Screw - Cap, Hex. Hd.	6
7	32128-25	Nut - Lock	6
8	94-2958	Stud - Ball	6
9	3254-6	Washer - Lock, Int. Tooth	6

Ref. No.	Part No.	Description	No. Used
10	65-9500	Screw - Roller, Adjustment	6
11	3253-3	Washer - Lock	6
12	321-4	Screw - Cap, Hex. Hd.	6
13	65-9530	Roller Extension W.A. - L.H.	3
*	65-9460	Roller Extension W.A. - R.H.	3
14	3253-4	Washer - Lock	12
15	322-2	Screw - Cap, Hex. Hd.	12
**	70-2330	Roller Extension L.H.	3
**	70-2320	Roller Extension R.H.	3

* Not Illustrated

** 4-Bolt Only



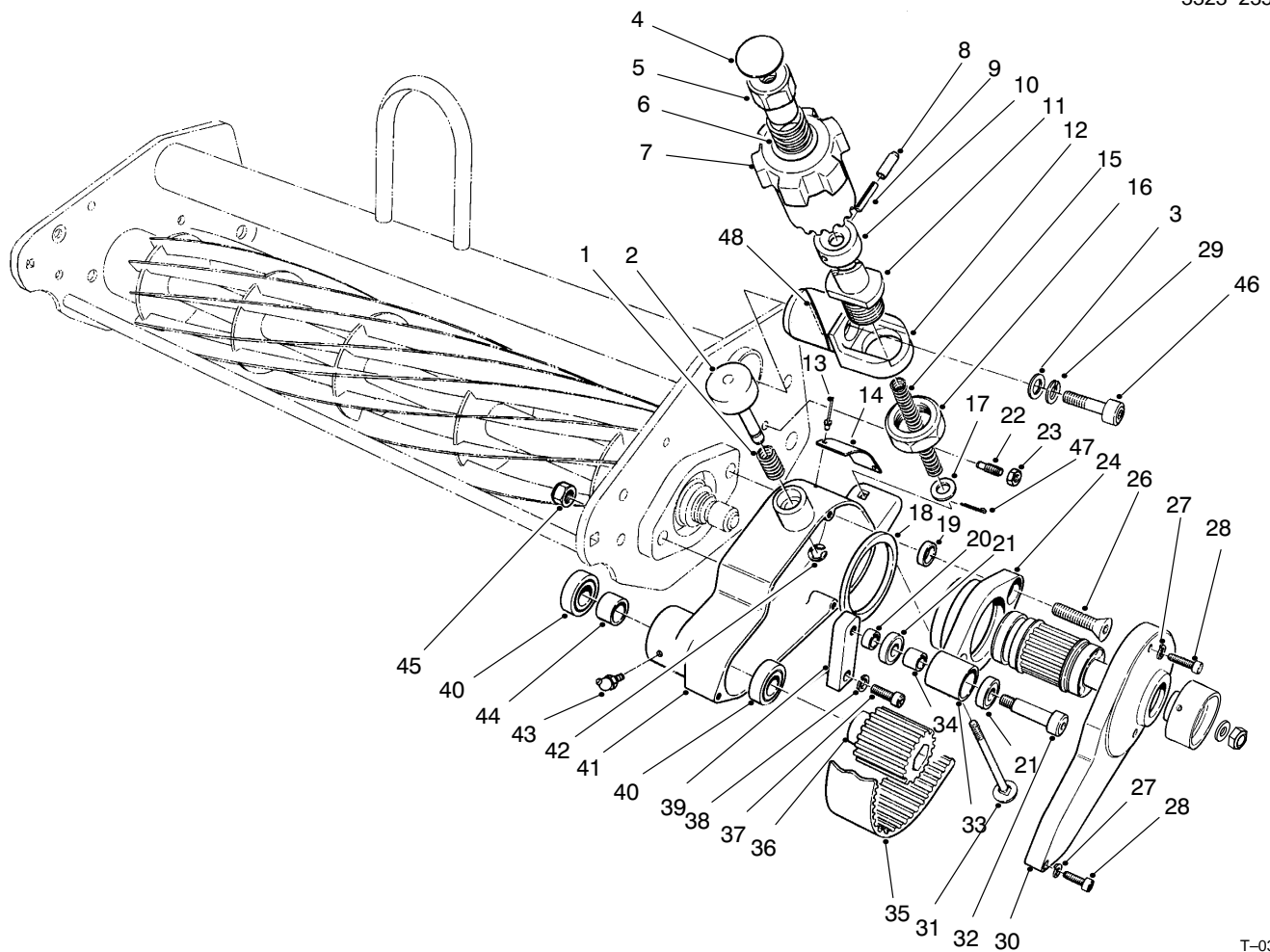
T-0330

Groomer Reel Assembly

Ref. No.	Part No.	Description	No. Used
1	32128-36	Nut - Flange	6
2	65-9970	Stud	6
3	65-9350	Adapter	3
4	65-9230	Plate - Side	3
5	65-9860	Bearing	3
6	77-0560	Nut - Splined	3
7	65-9960	Screw - Pivot	3
8	3296-60	Nut - Lock	6
9	70-1350	Spacer (41 Blade Reel)	252
10	70-1170	Blade (41 Blade Reel)	123
11	75-9980	Shaft	3
12	32152-2	Nut - Lock	6

Ref. No.	Part No.	Description	No. Used
13	65-9820	Spacer	6
15	3289-21	Screw - Flat Hd. Hex. Soc.	9
16	251-327	Bearing - Ball	6
17	92-3046	Spacer	3
18	65-9220	Housing - Bearing	3
19	302-5	Fitting - Grease	3
20	3296-62	Nut - Lock	3
21	3296-4	Nut - Lock	9
22	3254-6	Washer - Lock, Int. Tooth	6
*	74-3290	Groomer Reel Assembly (Incl. Ref. #8-11)	3

* Not Illustrated

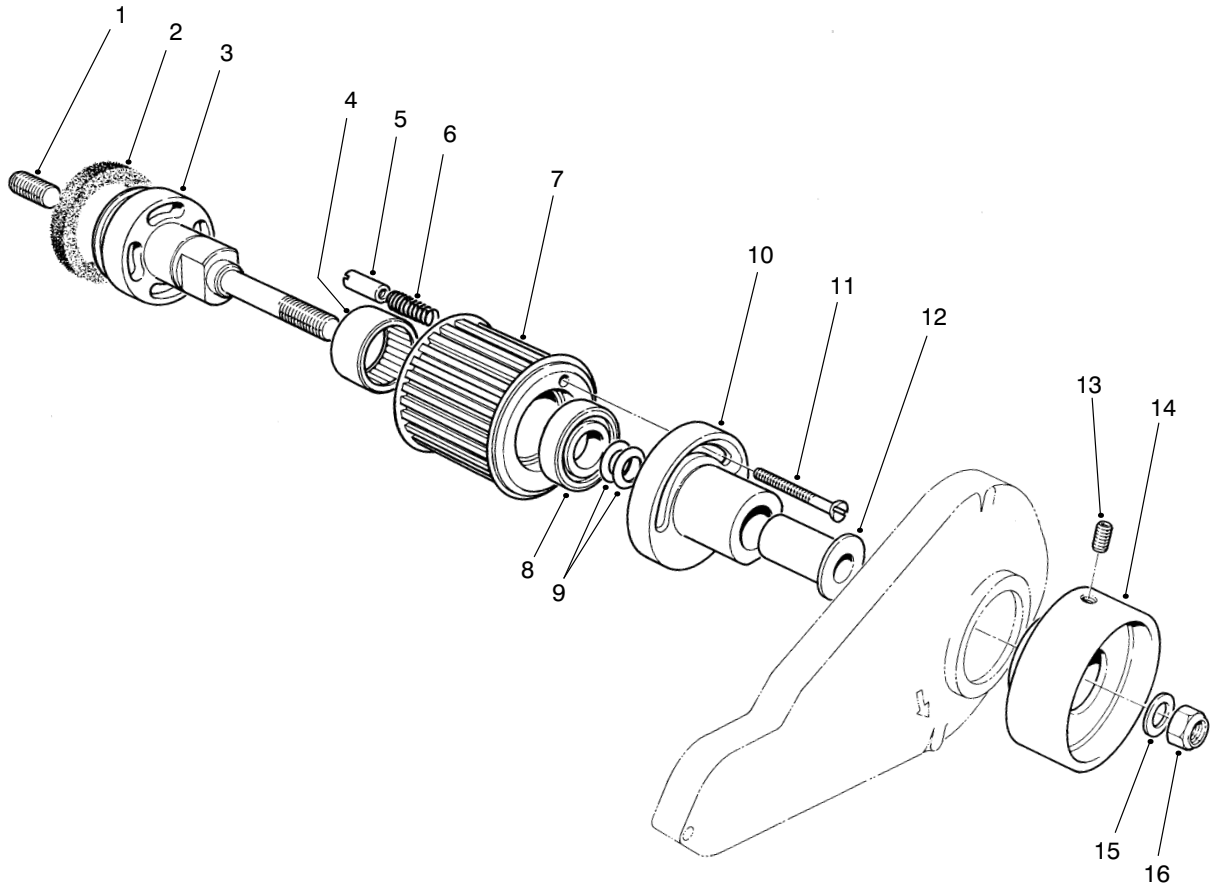


T-0331

Groomer Drive Assembly

Ref. No.	Part No.	Description	No. Used
1	65-9940	Spring	3
2	65-9930	Cap	3
3	3256-74	Washer - Flat	6
4	284-3	Plug - Expansion	6
5	65-9570	Driver	6
6	65-9580	Spring	6
7	65-9560	Knob Assembly (Incl. Ref.#4-7)	6
8	2410-68	Cover - Pin	6
9	32121-15	Pin - Roll	6
10	65-9550	Cap	6
11	65-9830	Ramp	6
12	70-7470	Block - Mounting (Modified)	6
13	3290-271	Rivet - Pop	6
14	94-6346	Plate - Caution	3
15	65-9810	Spring	6
16	92-4955	Nut - Lock	6
17	3256-24	Washer - Flat (L.H. Side)	3
*	65-9850	Washer (R.H. Side)	3
18	65-9860	Bearing	3
19	65-9820	Spacer	6
20	65-9330	Spacer	3
21	251-328	Bearing	6
22	65-9740	Screw - Pivot	3
23	3217-7	Nut - Hex.	3

Ref. No.	Part No.	Description	No. Used
24	65-9350	Adapter	3
26	3289-19	Screw - Flat Hd. Socket	6
27	3253-12	Washer - Lock	9
28	3274-13	Screw - Soc. Hd. Cap	9
29	3253-4	Washer - Lock	6
30	65-9710	Cover - Belt	3
31	65-9890	Bolt - Carriage	6
32	65-9340	Screw - Shoulder	3
33	65-9320	Idler - Pulley	3
34	65-9980	Spacer - Pulley, Idler	3
35	65-9700	Belt	3
36	65-9290	Pulley - Driven	3
37	3274-22	Screw - Cap, Hex. Socket	3
38	3253-4	Washer - Lock	3
39	95-5728	Block - Idler	3
40	251-327	Bearing	6
41	65-9270	Housing - Drive, Belt	3
42	32120-18	Ring - Retaining	3
43	302-11	Fitting - Grease	3
44	92-3046	Spacer - Pulley, Driven	3
45	32152-2	Nut - Lock	6
46	3274-86	Screw - Cap, Soc. Hd.	6
47	3272-11	Pin - Cotter	6
48	257-10	Washer	6



T-0332

Clutch Assembly

Ref. No.	Part No.	Description	No. Used
1	82-6460	Screw	3
2	65-9900	Seal - Felt	3
3	65-9610	Adapter	3
4	252-110	Bearing - Needle	3
5	65-9660	Pin - Clutch	3
6	65-9670	Spring - Compression	3
7	65-9630	Pulley - Driver	3
8	251-327	Bearing - Roller	3

Ref. No.	Part No.	Description	No. Used
9	3290-480	Washer - Belleville	6
10	65-9640	Disc - Release, Clutch	3
11	65-9650	Screw - Special	3
12	256-300	Bushing - Flange	3
13	32110-13	Screw - Set	6
14	65-9680	Knob - Clutch	3
15	3256-24	Washer - Flat	3
16	3296-39	Nut - Lock	3