



Spiker
Greensmaster® 3000 Series
Model No. 04494—220000001 and Up

Parts Catalog

Ordering Replacement Parts

To order replacement parts, please supply: the part number, the quantity, and the description of each part desired.

Understanding Reference Numbers

Each identified part in an illustration has a reference number. The reference number for a part also appears in the parts list, along with other information about the part.

This catalog uses two special reference number formats, one to indicate parts in a service assembly and another to indicate the quantity of a given part in an illustration.

Service Assembly Reference Numbers

Parts in service assemblies have reference numbers in the form **a:b**. The **a** represents the reference number of the entire service assembly and the **b** represents a sequential number unique to each part within the service assembly.

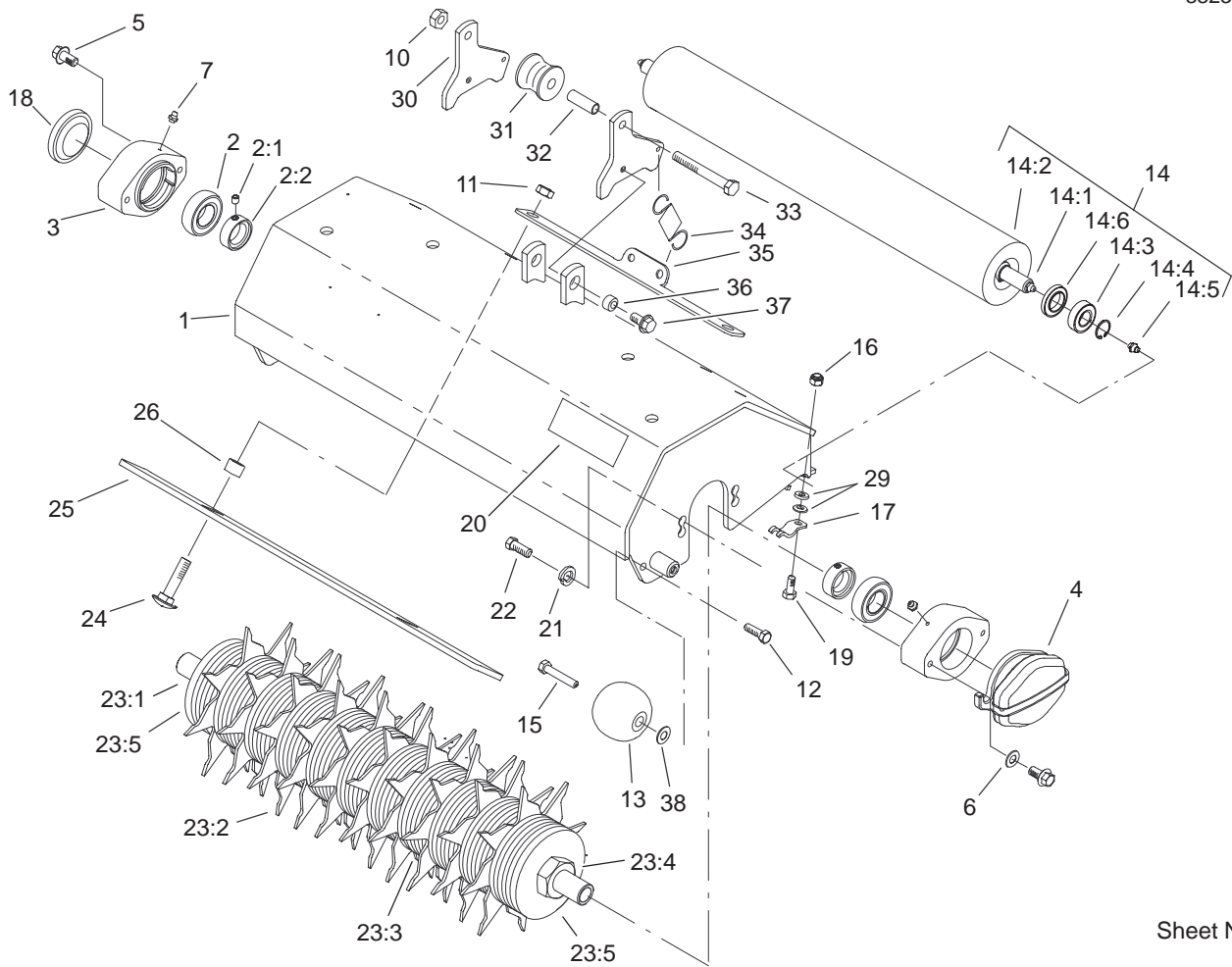
For example, a wheel assembly might be identified by reference number **6**, the tire by **6:1**, the valve by **6:2**, and the wheel by **6:3**. When you order the assembly identified by reference number **6**, you receive all parts identified by reference numbers **6:1**, **6:2**, and **6:3**. However, you may also order any part individually.

Reference numbers of this type appear in illustrations and in part lists.

Reference Numbers Indicating Quantity

In an illustration, if a reference number indicates more than one part, the reference number has the form **nX y**. The **n** represents the quantity of the part, the **X** is the multiplication symbol, and the **y** represents the reference number.

For example, in an illustration, the reference number **2X 37** means that two of the parts identified by reference number **37** are indicated.



Sheet No.:A1

T-3894

Spiker Assembly

| Ref. No. | Part No. | Qty. | Description |
|----------|-------------|------|----------------------|
| 1 | 100-6443-01 | 1 | Frame ASM |
| 2 | 94-3405 | 2 | Bearing-Ball |
| 2:1 | 3245-35 | 1 | Screw-HS |
| 2:2 | 251-77 | 1 | Lockcollar-Bearing |
| 3 | 95-7148 | 2 | Housing-Bearing |
| 4 | 95-1642-01 | 1 | Weight-Counter |
| 5 | 93-2569 | 4 | Screw-HHF |
| 6 | 3256-24 | 2 | Washer-Flat |
| 7 | 302-5 | 2 | Fitting-Grease |
| 10 | 3296-39 | 1 | Nut-Lock, NI |
| 11 | 33026-00 | 2 | Nut-Lock |
| 12 | 323-5 | 2 | Screw-HH |
| 13 | 99-4210 | 2 | Roller-Anti Scalp |
| 14 | 99-1615 | 1 | Rear Roller ASM |
| 14:1 | 93-2466 | 1 | Shaft-Roller |
| 14:2 | 99-1616 | 1 | Rear Roller Tube ASM |
| 14:3 | 93-2559 | 2 | Bearing-Ball |
| 14:4 | 93-2525 | 2 | Ring-Retaining |
| 14:5 | 302-5 | 2 | Fitting-Grease |
| 14:6 | 98-2194 | 2 | Sleeve-Grease |
| 15 | 99-4209 | 2 | Shaft-Roller |
| 16 | 33024-00 | 2 | Nut-Lock |
| 17 | 99-8168 | 2 | Collar-HOC |
| 18 | 2410-30 | 1 | Cap-Plastic |
| 19 | 33114-025 | 2 | Screw-HH |
| 20 | 67-1300 | 1 | Decal-Logo, Toro |

| Ref. No. | Part No. | Qty. | Description |
|----------|-------------|------|----------------------|
| 21 | 48-9590 | 4 | Washer-Lock |
| 22 | 33115-025 | 4 | Screw-HH |
| 23 | 99-1610 | 1 | Spiker Shaft ASM |
| 23:1 | 99-1611 | 1 | Shaft-Spiker |
| 23:2 | 99-1612 | 10 | Blade-Spiker |
| 23:3 | 99-1613 | 73 | Spacer |
| 23:4 | 67-5840 | 2 | Nut-Jam |
| 23:5 | 99-1635 | 2 | Spacer |
| 24 | 33126-045 | 2 | Screw-CARR |
| 25 | 99-1637-01 | 1 | Plate-Scraper |
| 26 | 74-3730 | 2 | Spacer-Spindle, Rear |
| 29 | 3256-74 | 4 | Washer-Flat |
| 30 | 100-6446-01 | 2 | Plate-Pivot |
| 31 | 100-6449 | 1 | Roller-Lift |
| 32 | 100-6448 | 1 | Spacer-Roller |
| 33 | 323-12 | 1 | Screw-HH |
| 34 | 88-6330 | 1 | Spring-Extension |
| 35 | 100-9818-01 | 1 | Plate-Mount, Spring |
| 36 | 100-6447 | 2 | Tube-Spacer |
| 37 | 3234-1 | 2 | Screw-HHF |
| 38 | 3256-45 | 2 | Washer-Flat |

